

V&V Reference Report

L2 ASCDS Version : 8.4.4

Observation 10090 - L2 Version 2
Chandra X-Ray Center

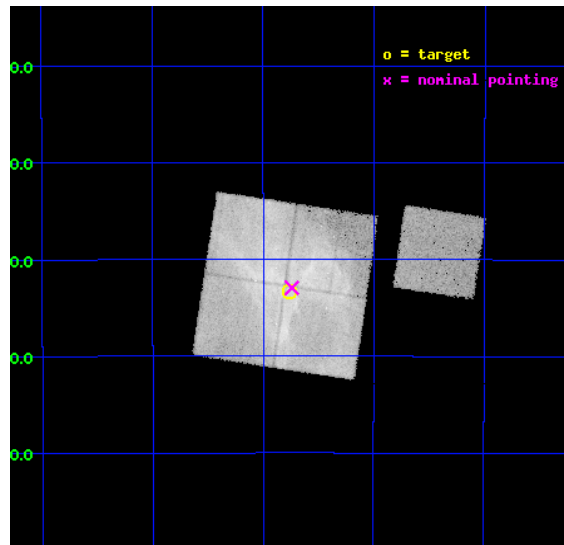
L2 Processing Date : May 30 2012

Contents

1	Front	2
2	OBI	3
2.1	OBI	3
2.1.1	Images	3
2.1.2	Bias	3
2.1.3	Parameters	4
2.1.4	Events	4
2.2	Compared Parameters	5
2.3	Aspect	6
2.4	Star Slots	9
2.4.1	Slot 3	9
2.4.2	Slot 4	10
2.4.3	Slot 5	11
2.4.4	Slot 6	12
2.4.5	Slot 7	13
2.5	FID Slots	14
2.5.1	Slot 0	14
2.5.2	Slot 1	15
2.5.3	Slot 2	16
A	Summary	17
A.1	Status	17
A.2	Comments	17

1 Front

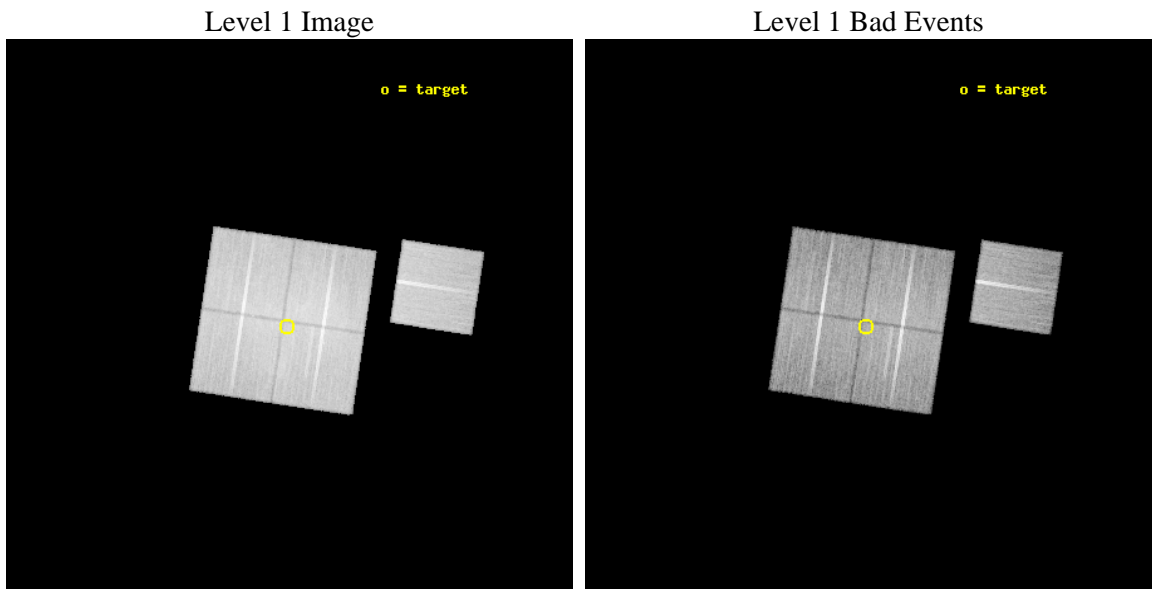
seq_num	501022	Sequence number
obs_id	10090	Observation id
title	Time Variability of Synchrotron X-ray Emission in SNR RX J1713.7-3946	Proposal title
observer	Dr Yasunobu Uchiyama	Principal investigator
object	RX J1713.7-3946 NW	Source name
dtycycle	0	
cycle	P	events from which exps? Prim/Second/Both
ra_targ	257.939583	Observer's specified target RA [deg]
dec_targ	-39.556444	Observer's specified target Dec [deg]
ra_nom	257.93501123411	Nominal RA [deg]
dec_nom	-39.549185018354	Nominal Dec [deg]
roll_nom	98.594435622343	Nominal Roll [deg]
revision	2	Processing version of data
ontime	28771.100221276	Sum of GTIs [s]
livetime	28395.184615909	Livetime [s]
ontime0	28761.677390099	Sum of GTIs [s]
ontime1	28767.959241033	Sum of GTIs [s]
ontime2	28764.818270624	Sum of GTIs [s]
ontime3	28771.100221276	Sum of GTIs [s]
ontime6	28767.959260941	Sum of GTIs [s]
l2events	274011	Number of level 2 events



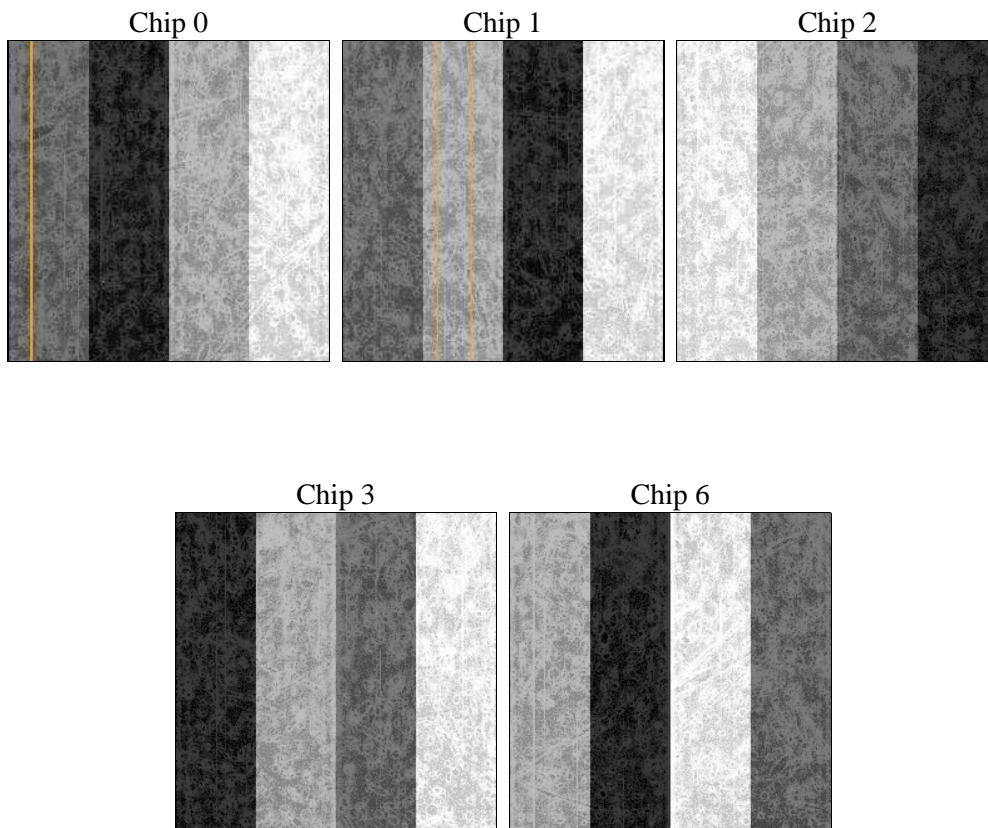
2 OBI

2.1 OBI

2.1.1 Images



2.1.2 Bias



2.1.3 Parameters

obi_num	0	Obi number	sched_exp_time	29000.000000	[s] Scheduled observation exposure time
ascdsver	8.4.4	Processing system revision	ontime	28771.100221276	Sum of GTIs [s]
caldbver	4.4.9	 	ontime0	28761.677390099	Sum of GTIs [s]
date	2012-05-30T07:21:28	Date and time of file creation	ontime1	28767.959241033	Sum of GTIs [s]
revision	2	Processing version of data	ontime2	28764.818270624	Sum of GTIs [s]
			ontime3	28771.100221276	Sum of GTIs [s]
			ontime6	28767.959260941	Sum of GTIs [s]
			l1events	1325839	Number of level 1 events

2.1.4 Events

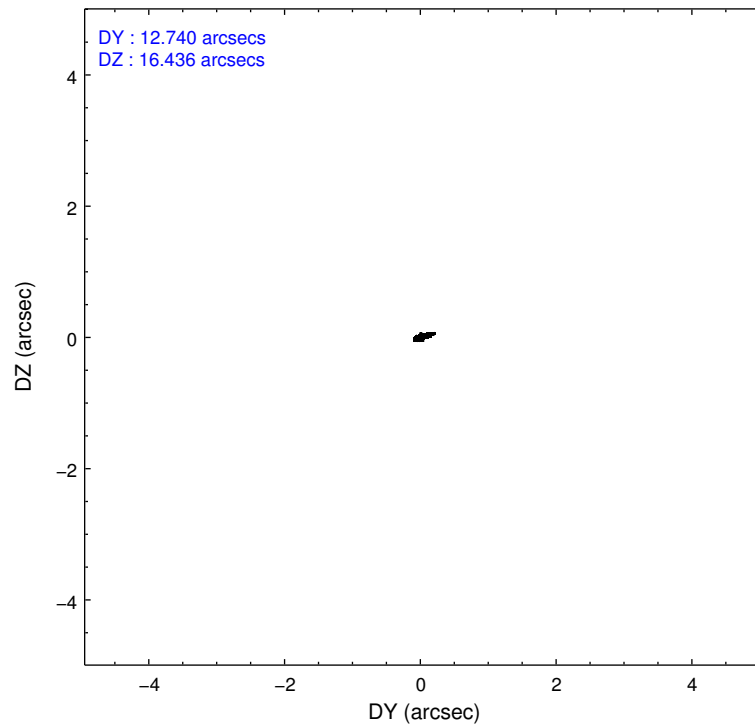
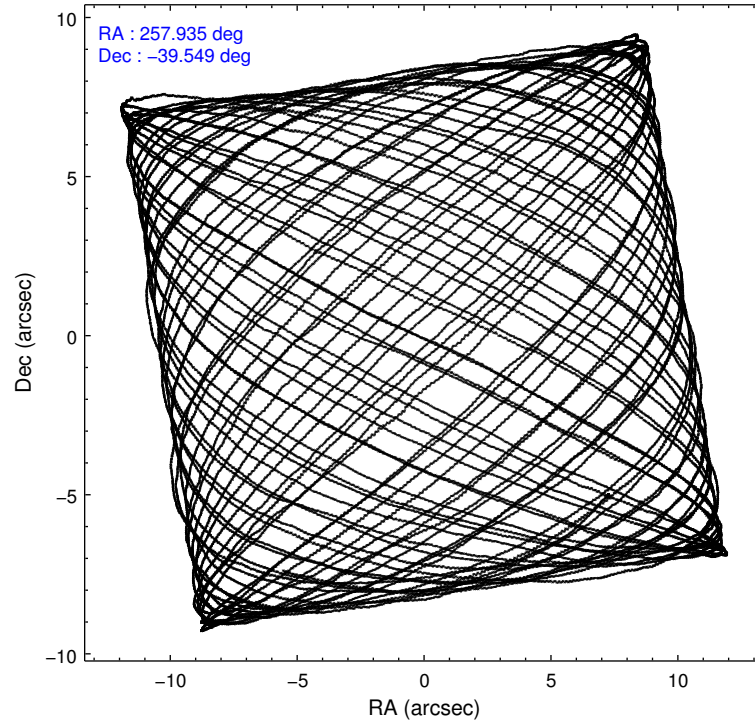
	ccd 0	ccd 1	ccd 2	ccd 3	ccd 6
level 1 events	276760	253529	284797	276044	234709
rejected events	193822	191061	219664	206191	209862
rejected %	70%	75%	77%	74%	89%

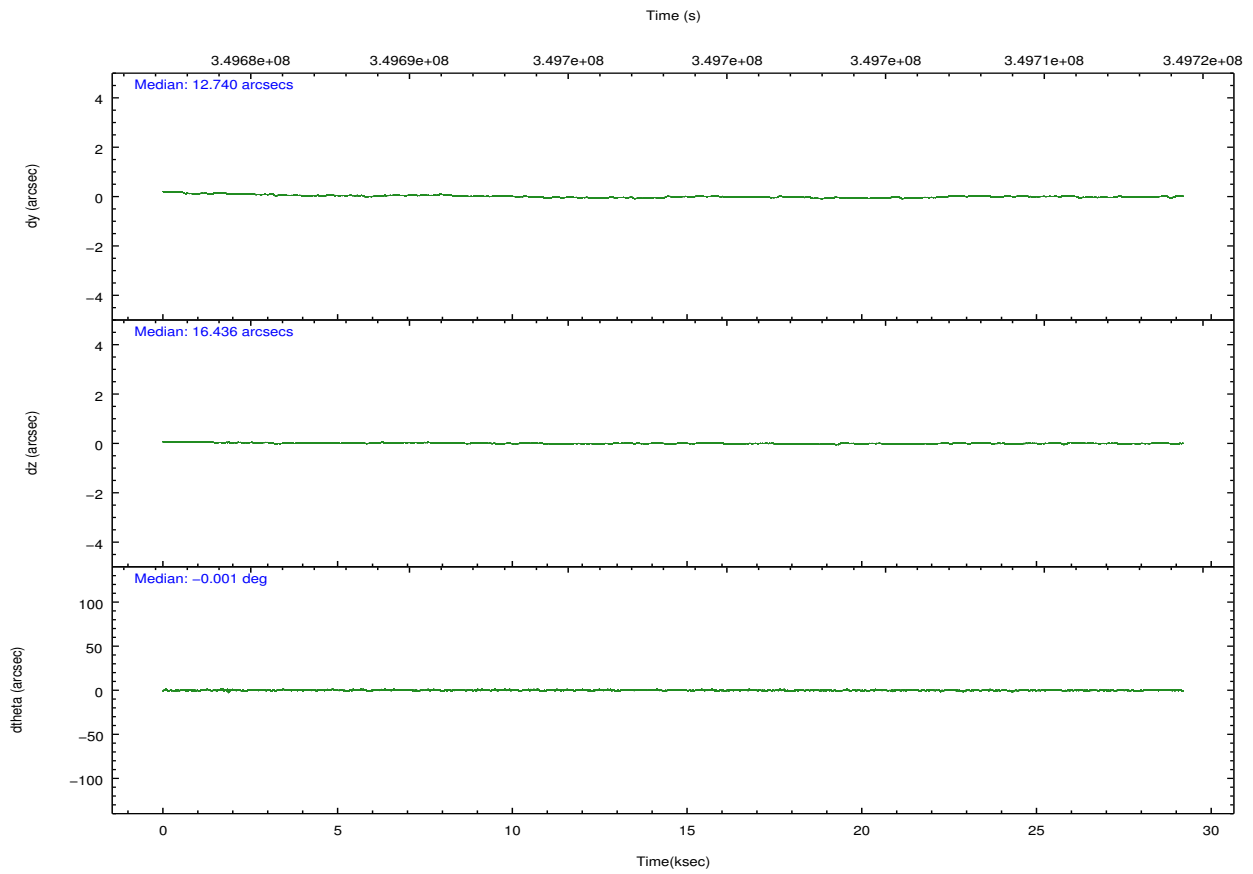
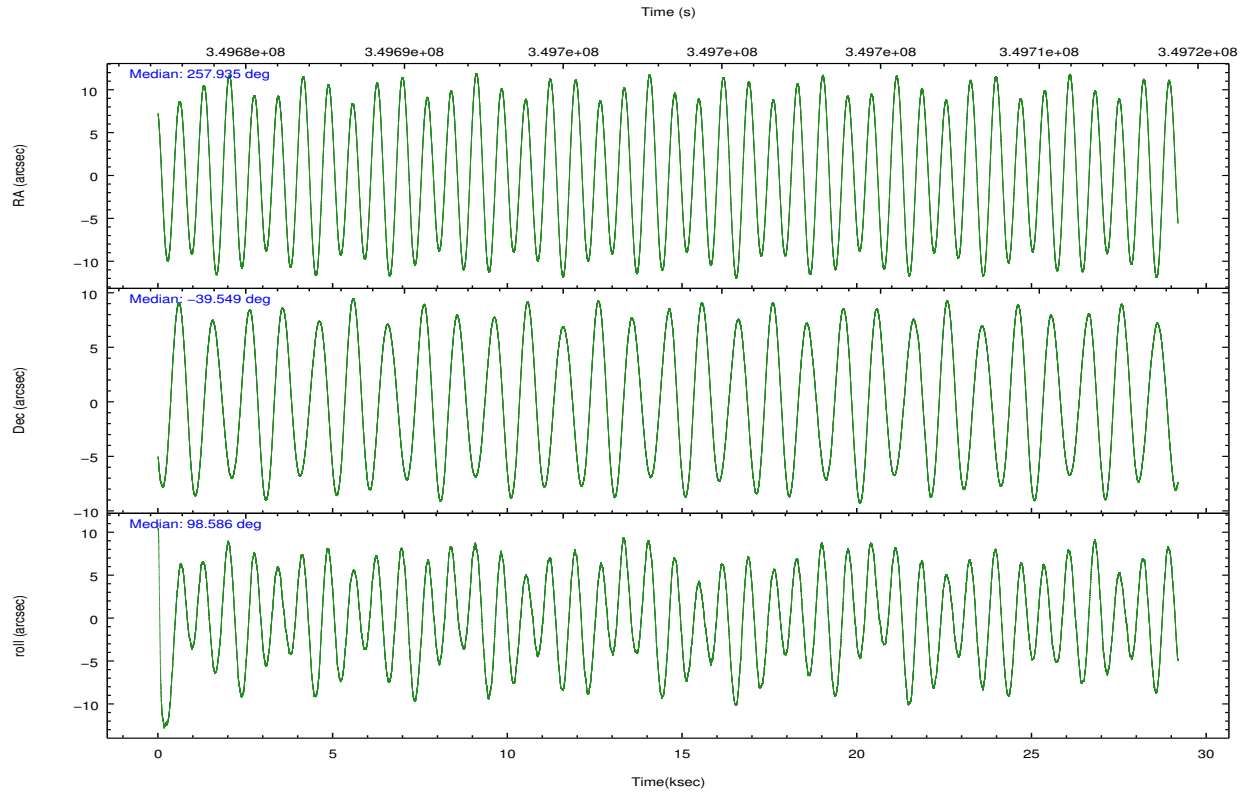
	ccd 0	ccd 1	ccd 2	ccd 3	ccd 6
grade 0 events	55548	38711	42316	46424	9673
	20%	15%	14%	16%	4%
grade 1 events	443	297	390	367	119
	0%	0%	0%	0%	0%
grade 2 events	12175	9871	9975	9951	5373
	4%	3%	3%	3%	2%
grade 3 events	4660	3968	3790	4009	2618
	1%	1%	1%	1%	1%
grade 4 events	4478	3959	3861	4023	2500
	1%	1%	1%	1%	1%
grade 5 events	7230	7814	6852	8348	7808
	2%	3%	2%	3%	3%
grade 6 events	6096	5969	5200	5455	4689
	2%	2%	1%	1%	1%
grade 7 events	186130	182940	212413	197467	201929
	67%	72%	74%	71%	86%

2.2 Compared Parameters

Parameter	Planned	Actual	Parameter	Planned	Actual
Instrument	ACIS	ACIS	Obspar format version number	7	7
Detector	ACIS-01236	ACIS-01236	Obspar file type	PREDICTED	ACTUAL
Grating	NONE	NONE	Obspar update status	NONE	UPDATED
Data mode	VFAINT	VFAINT	Number of optional ACIS chips dropped	0	0
Observation mode	POINTING	POINTING	On-chip summing requested	N	N
[deg] Pointing RA	257.957365	257.9350112341139	Subarray requested	NONE	NONE
[deg] Pointing Dec	-39.570589	-39.54918501835444	Alternating exposures requested	N	N
[deg] Pointing Roll	98.399985	98.59443562234328	[s] Primary exposure time	0.000000	3.1
[mm] SIM focus pos	-0.782348	-0.7809083437167272			
[mm] SIM defocus	0	0.001439871863259334			
[mm] SIM translation stage pos	-233.592463	-233.5874344608287			
[mm] SIM translation stage offset	0	-0.005018542100998502			
[s] Observation start time (MET)	349683903.184000	349683492.23528			
Observation start date	2009-01-30T06:23:57	2009-01-30T06:18:12			
[s] Observation end time (MET)	349712903.184000	349713141.89925			
Observation end date	2009-01-30T14:27:17	2009-01-30T14:32:21			
Read mode	TIMED	TIMED			

2.3 Aspect





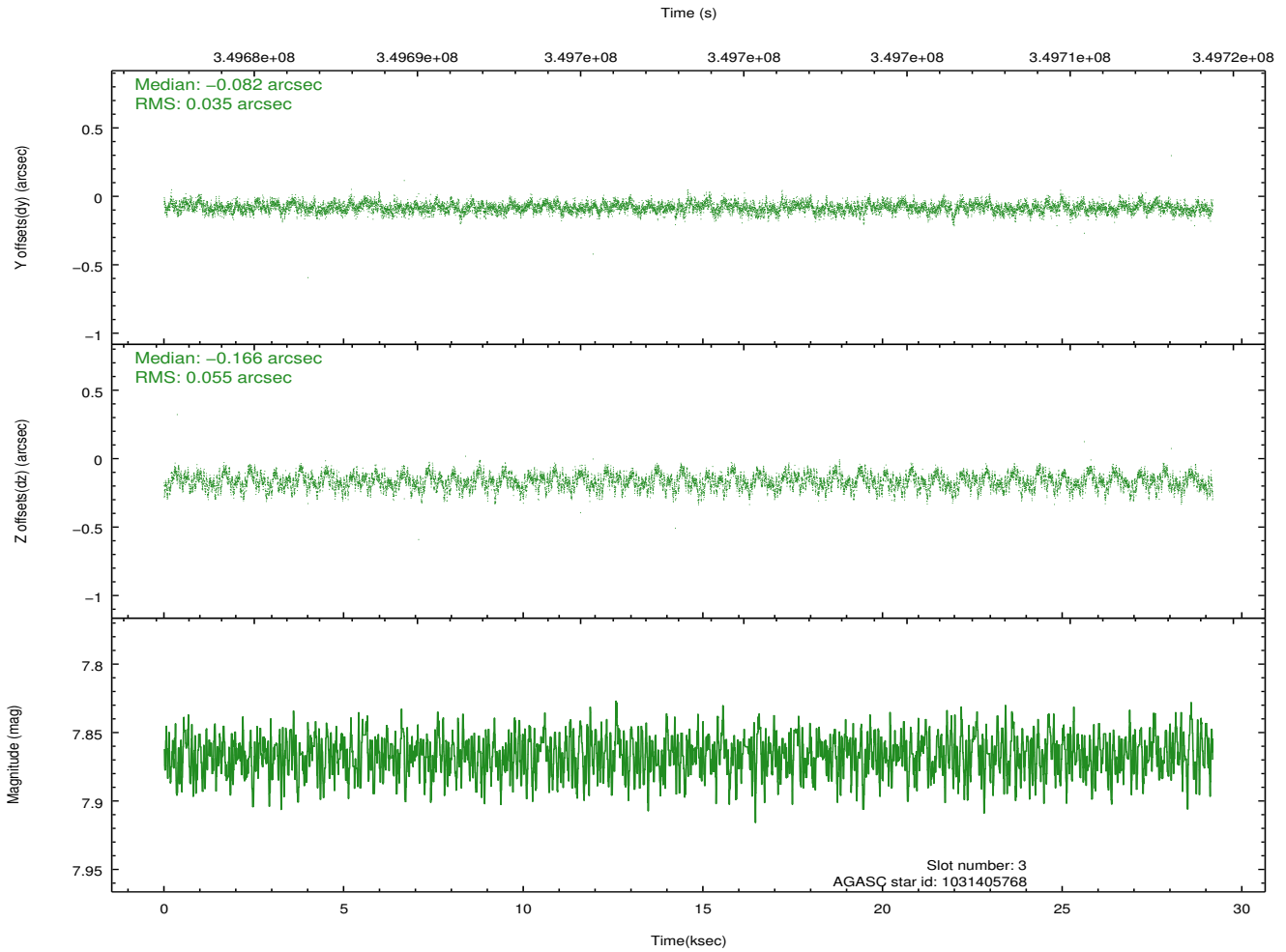
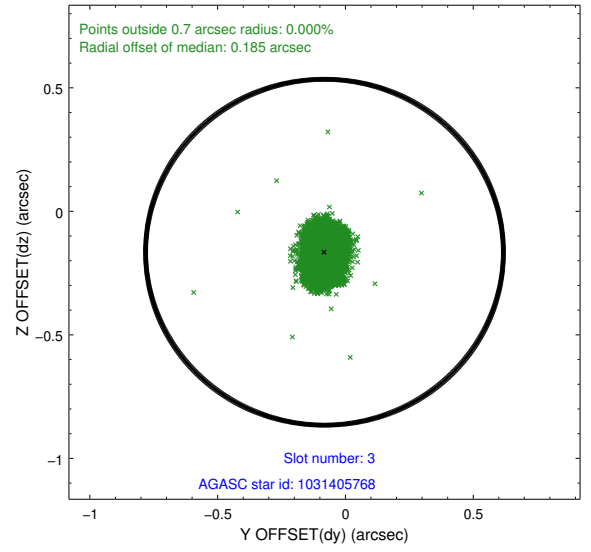
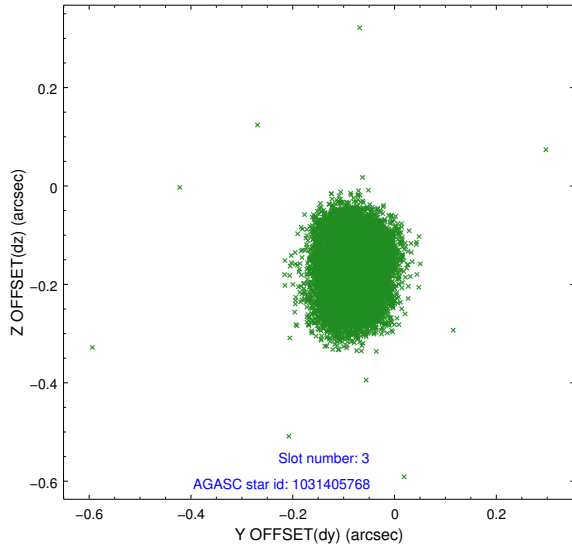
Slot Statistics

slot	status	id	mag	n_pts	med_dy	med_dz	dr1	dr2	ra	dec	mean_y	mean_z
0	FID	ACIS-I-1	7.00	7118	0.058	-0.038	0.007	0.013	0.000000	0.000000	926.81	-840.13
1	FID	ACIS-I-5	7.00	7118	-0.183	0.066	0.007	0.013	0.000000	0.000000	-1821.46	1057.47
2	FID	ACIS-I-6	7.00	7118	0.035	0.042	0.007	0.012	0.000000	0.000000	392.29	1702.00
3	GUIDE	1031405768	7.87	14230	-0.082	-0.166	0.068	0.112	257.178877	-39.338023	1135.38	2023.64
4	GUIDE	1031546704	9.15	14228	-0.103	0.211	0.096	0.163	258.328569	-39.071177	1625.10	-1287.87
5	GUIDE	1031548640	9.72	14212	-0.138	0.308	0.129	0.210	258.708500	-39.240425	861.59	-2243.52
6	GUIDE	1031932624	8.31	14233	0.233	-0.047	0.069	0.112	257.431727	-40.221910	-2112.68	1772.37
7	GUIDE	1031932008	8.82	14218	0.084	-0.307	0.084	0.140	257.163205	-39.994917	-1201.07	2391.17

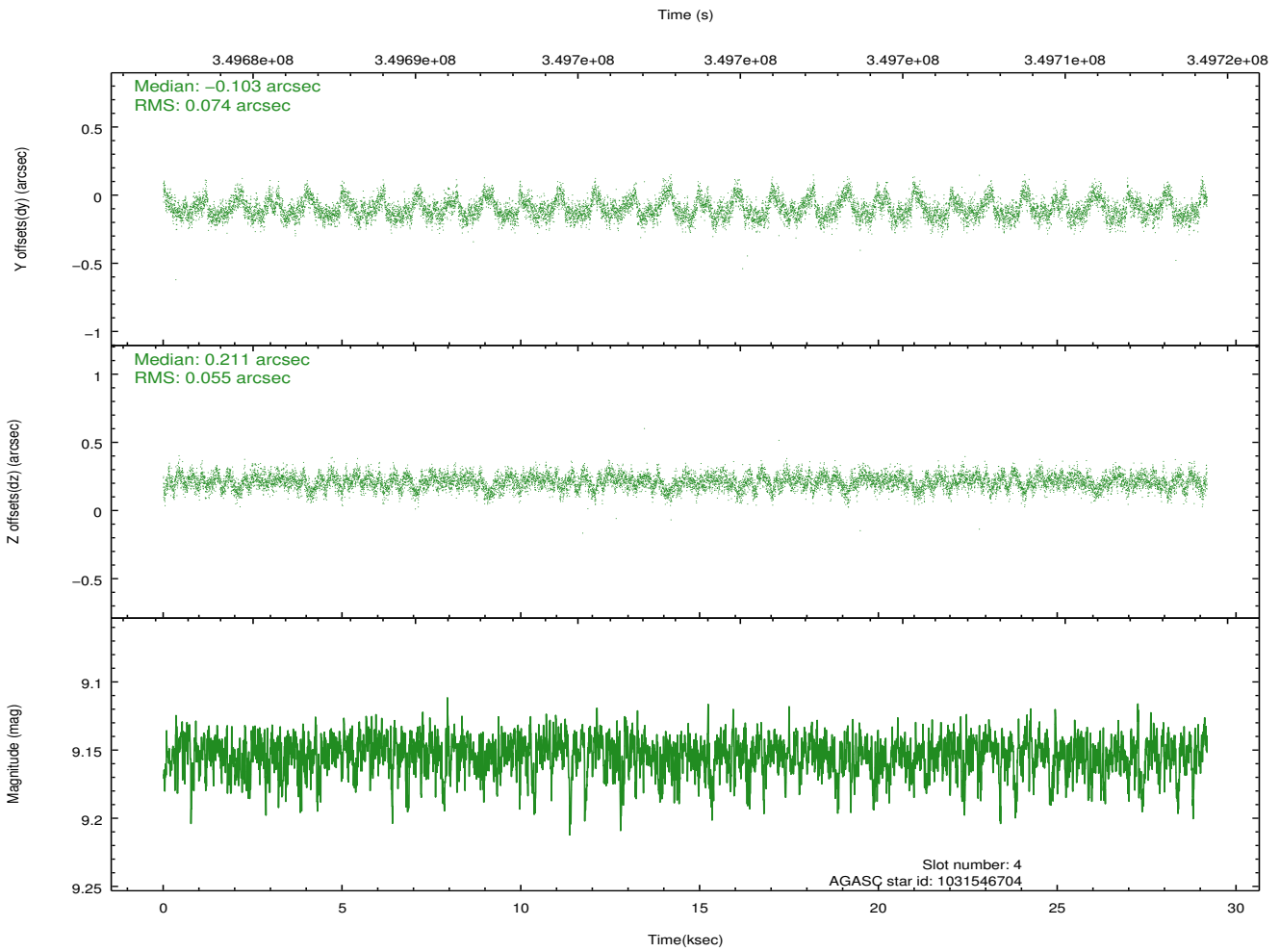
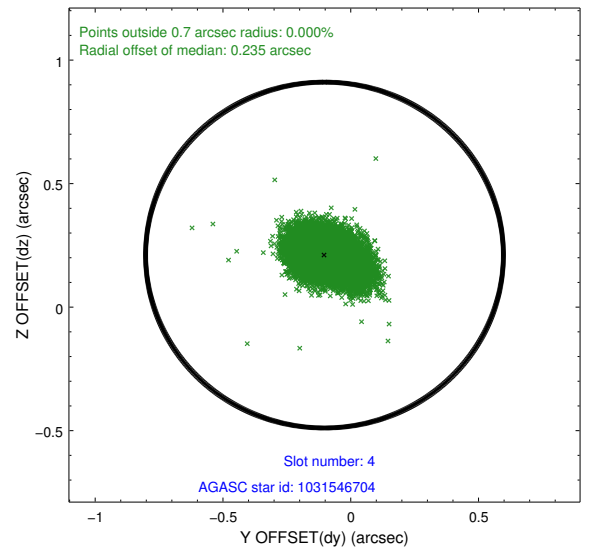
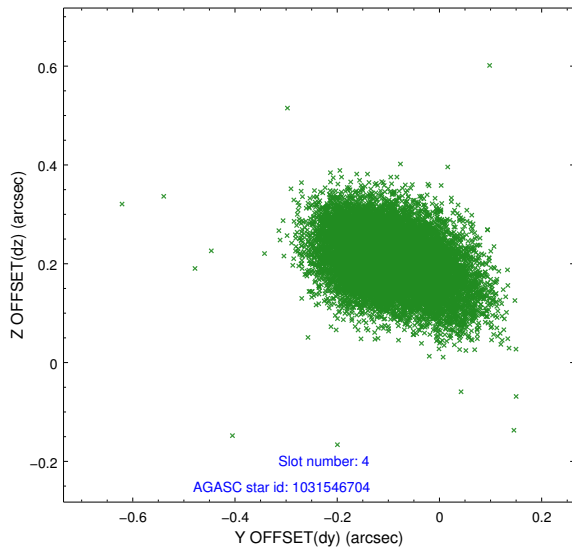
∞

2.4 Star Slots

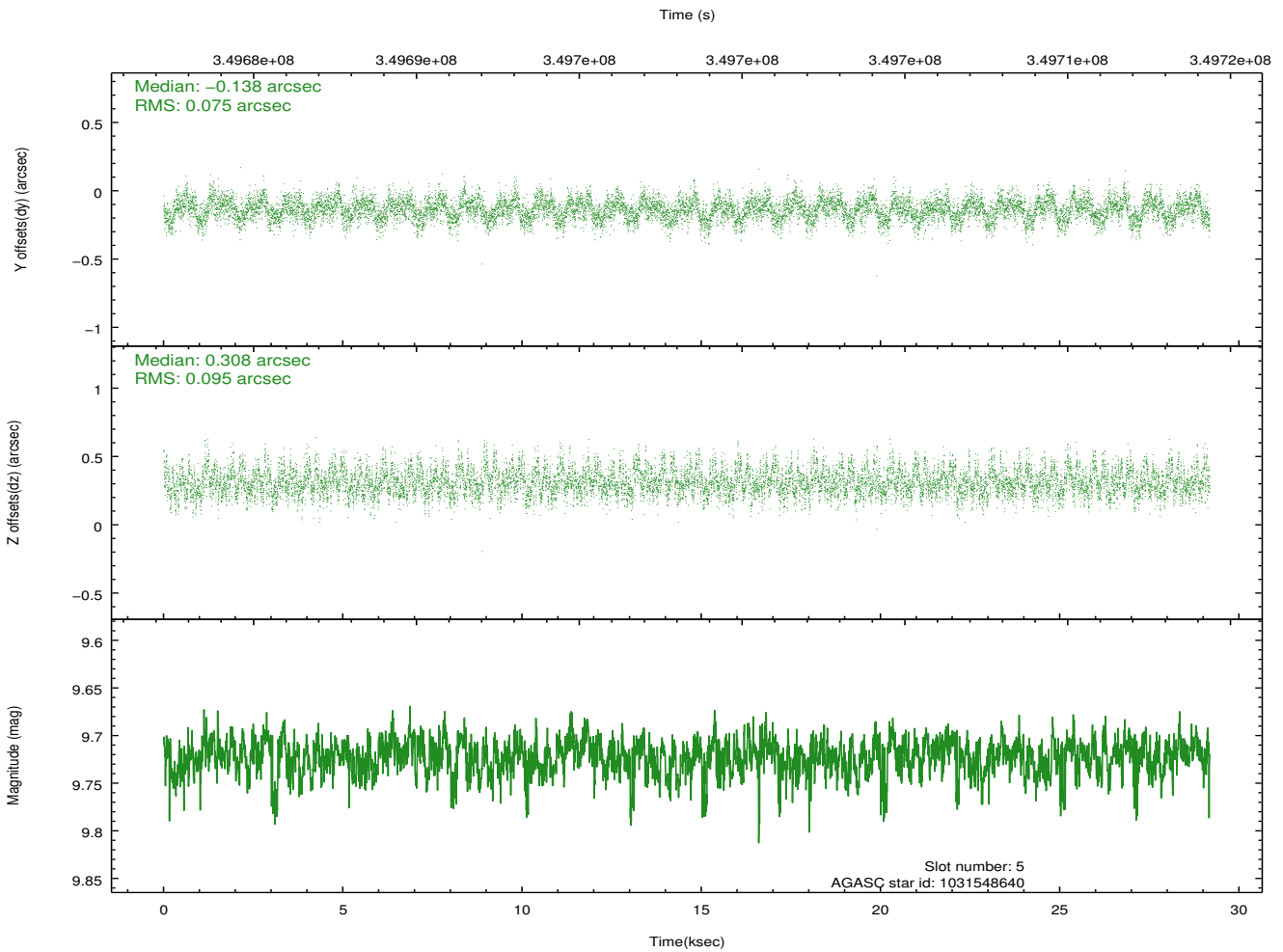
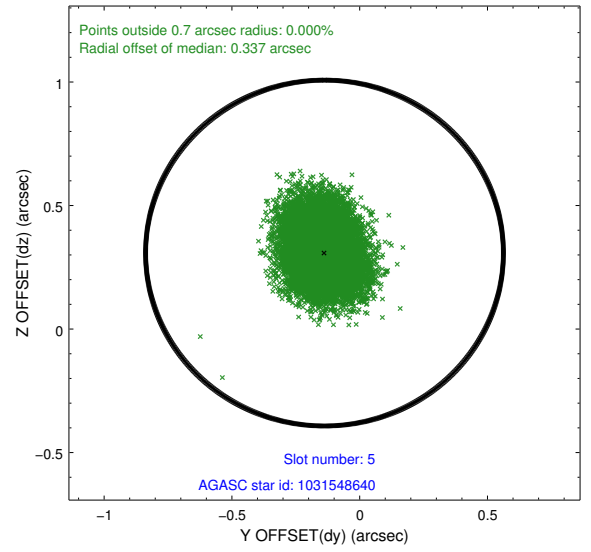
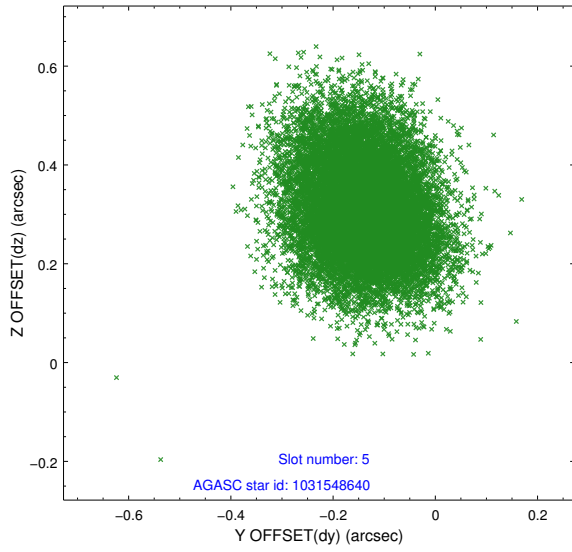
2.4.1 Slot 3



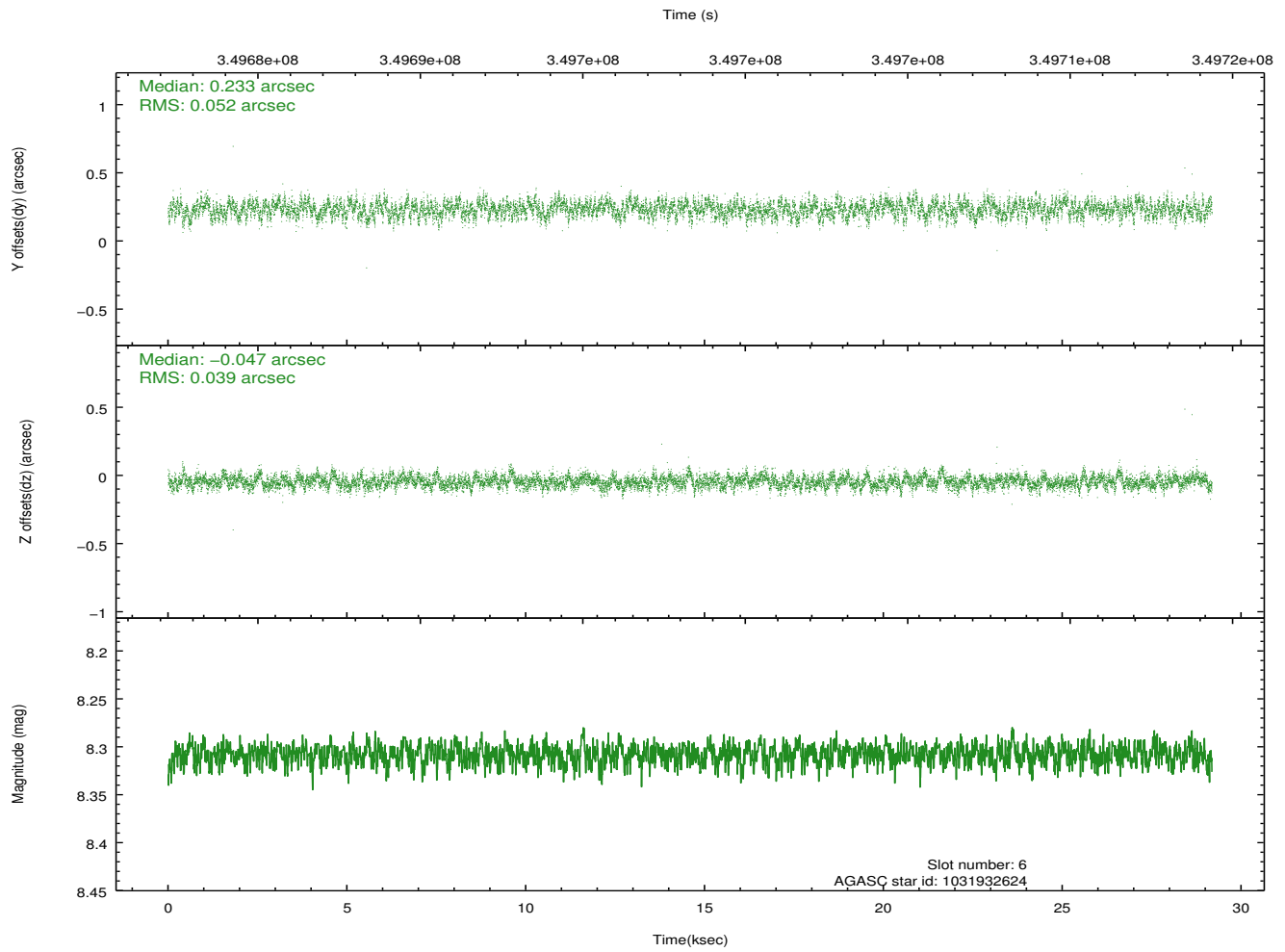
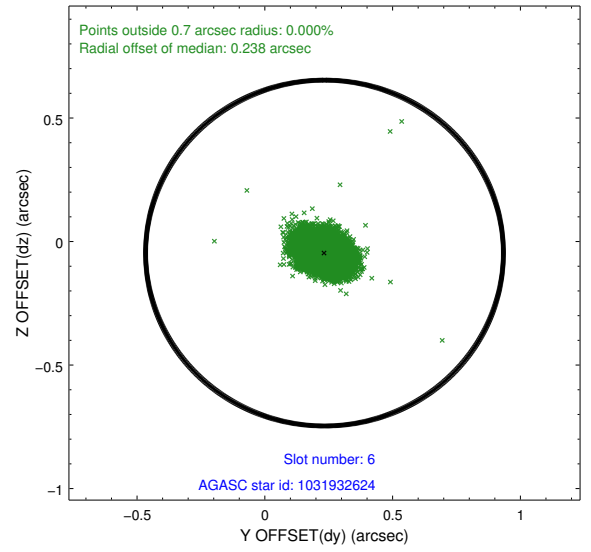
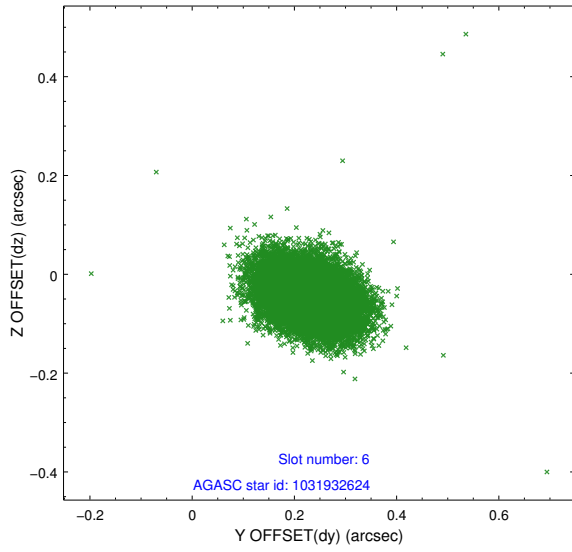
2.4.2 Slot 4



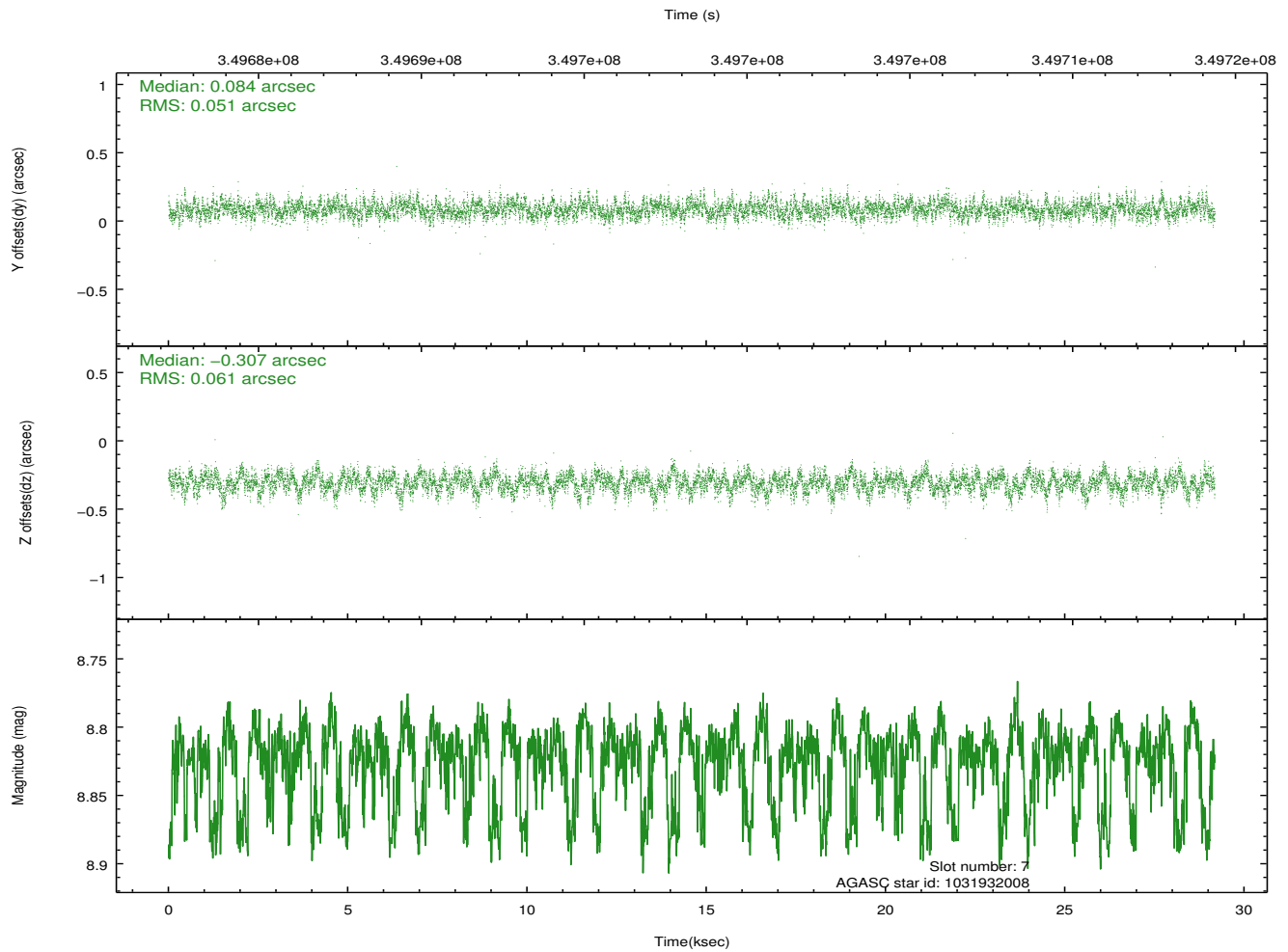
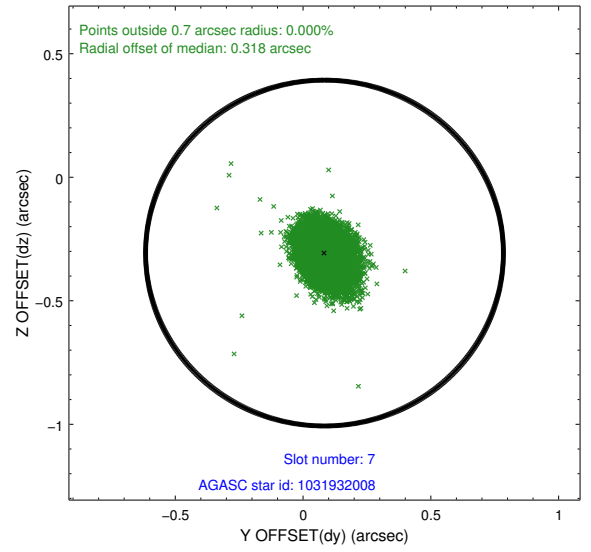
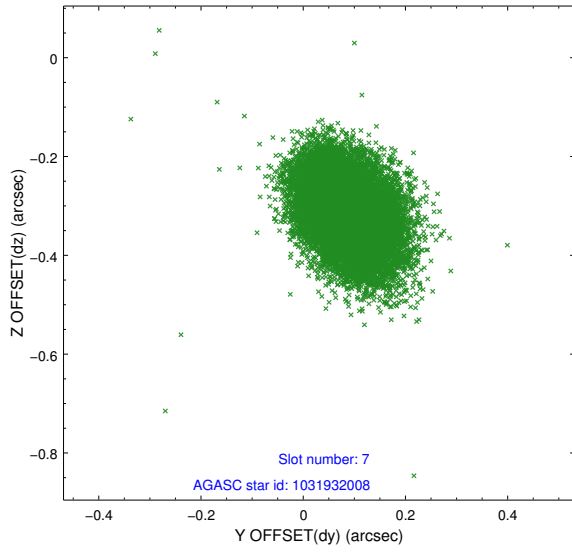
2.4.3 Slot 5



2.4.4 Slot 6

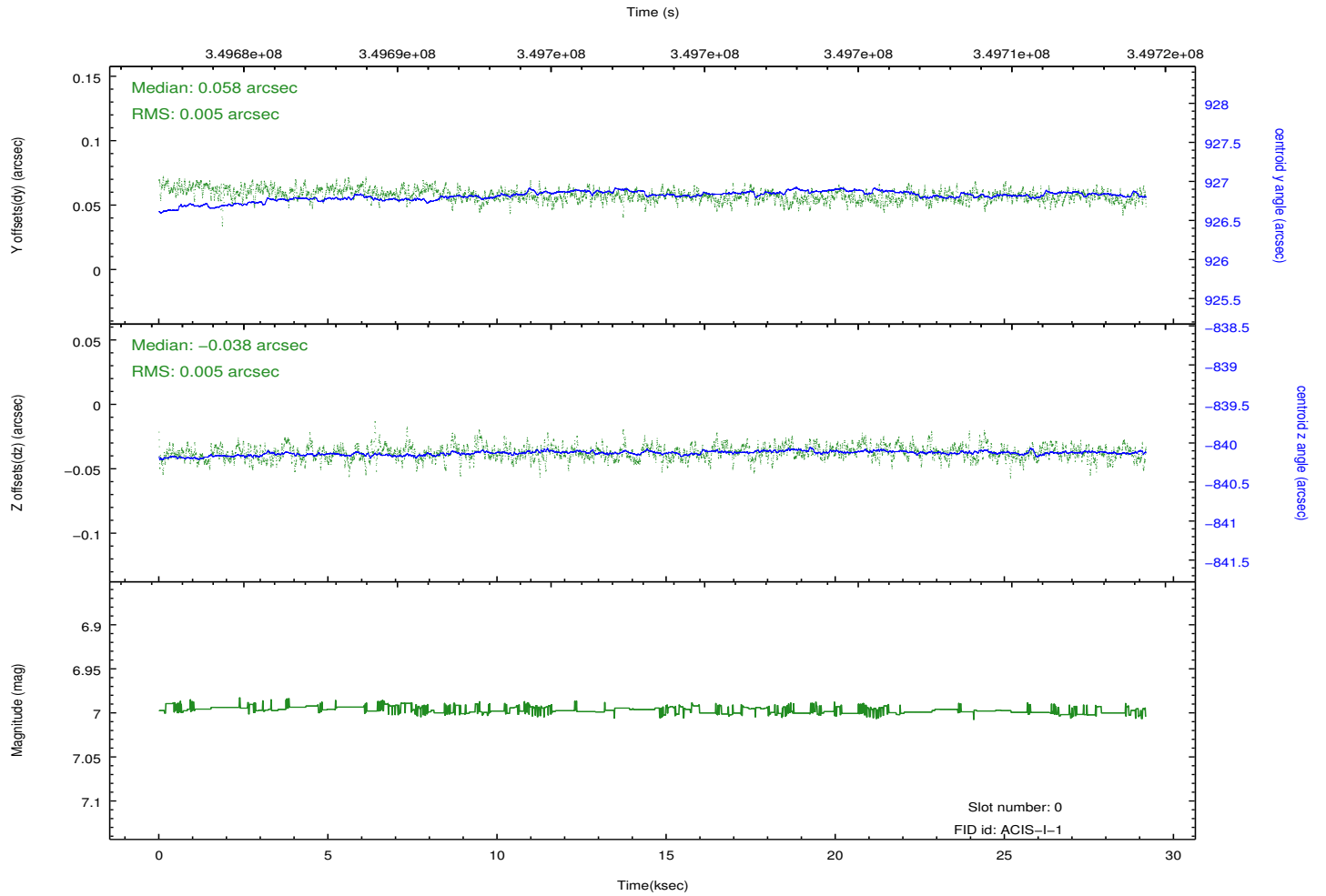
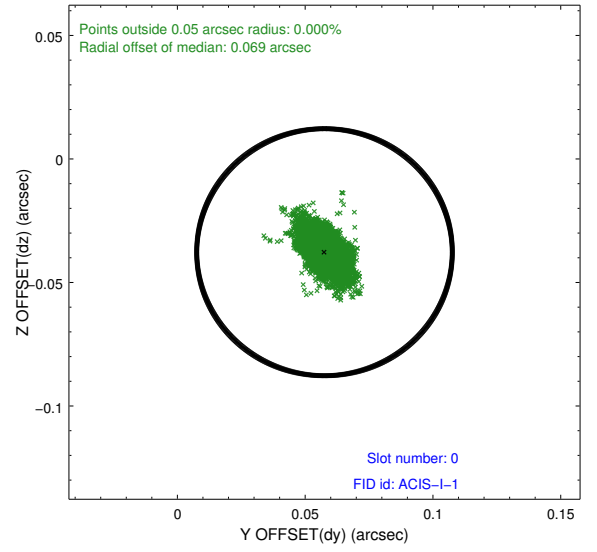
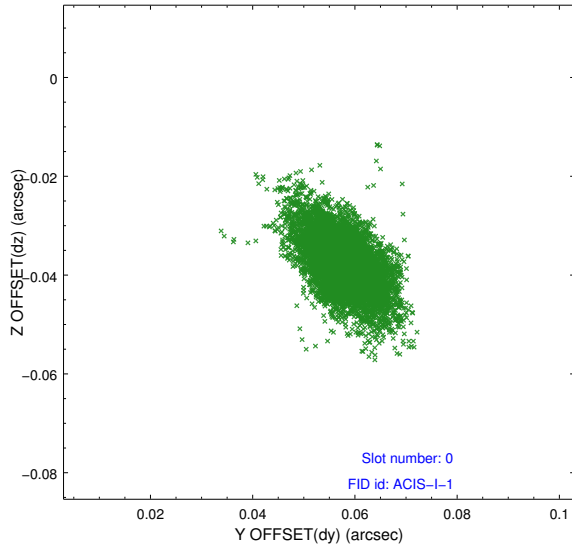


2.4.5 Slot 7

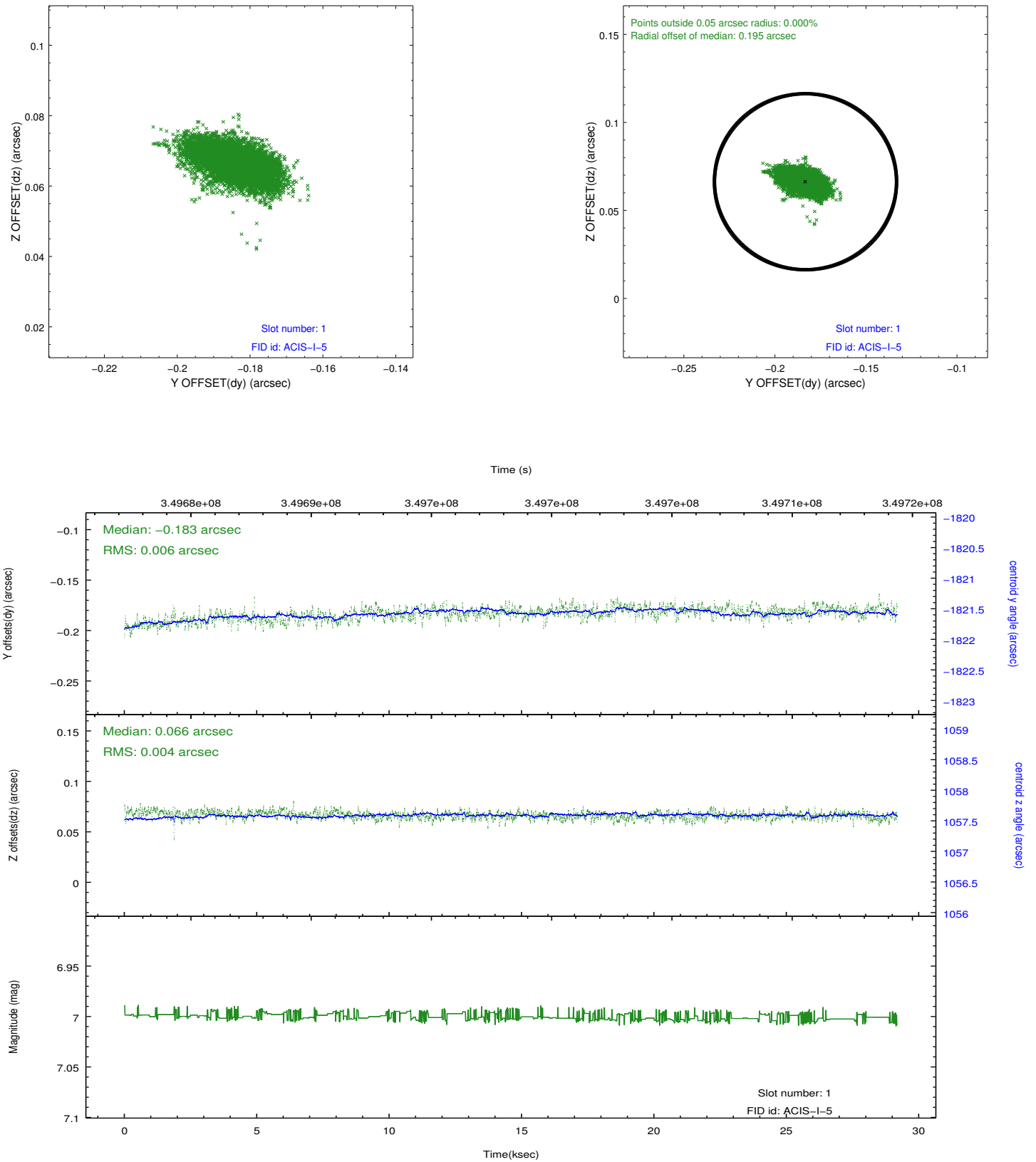


2.5 FID Slots

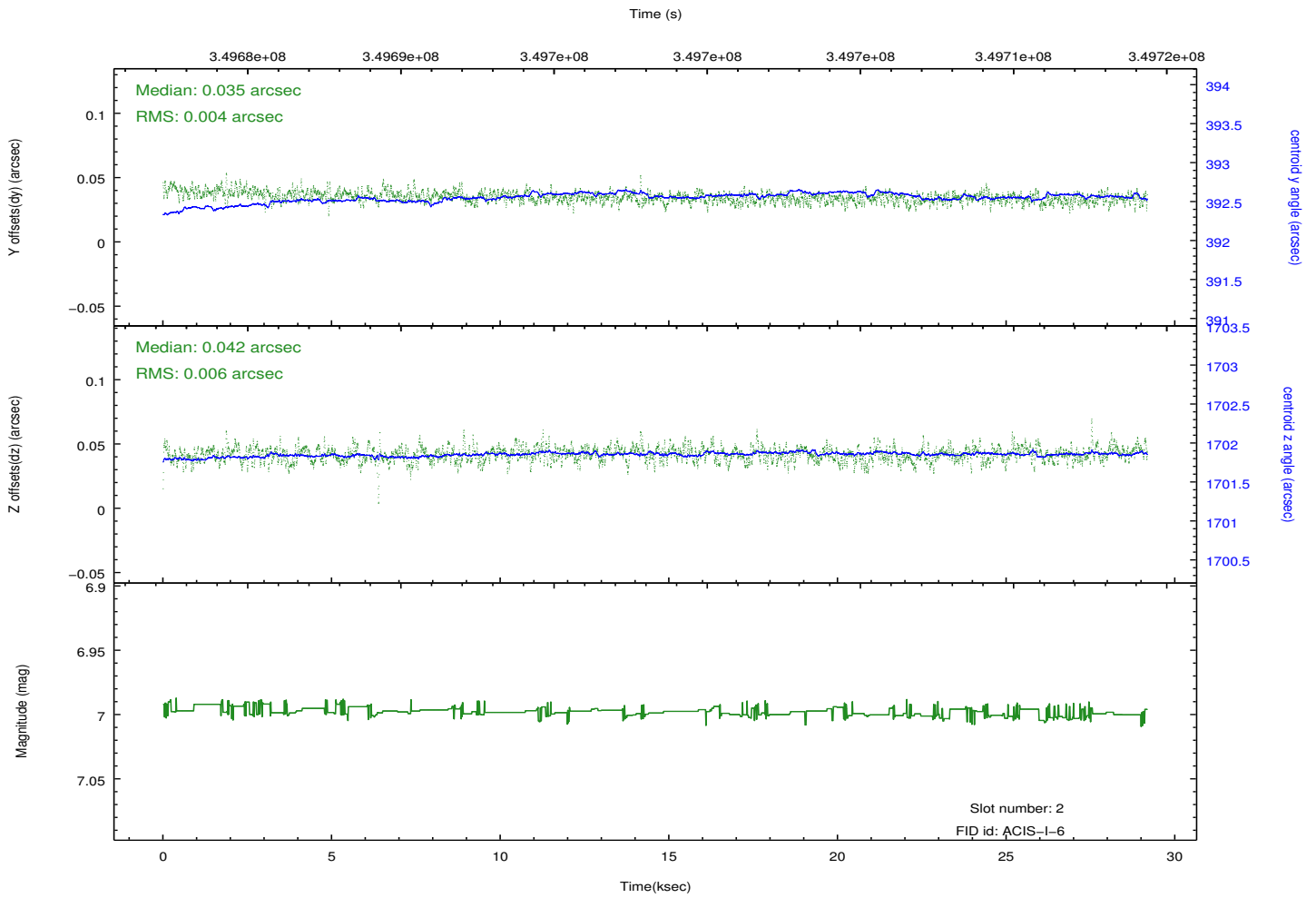
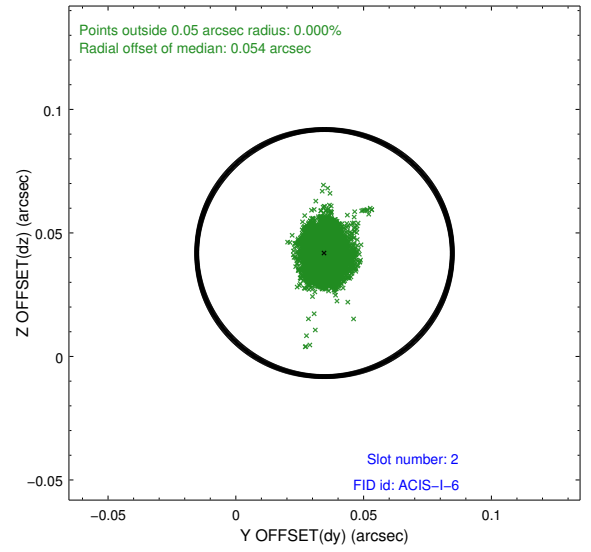
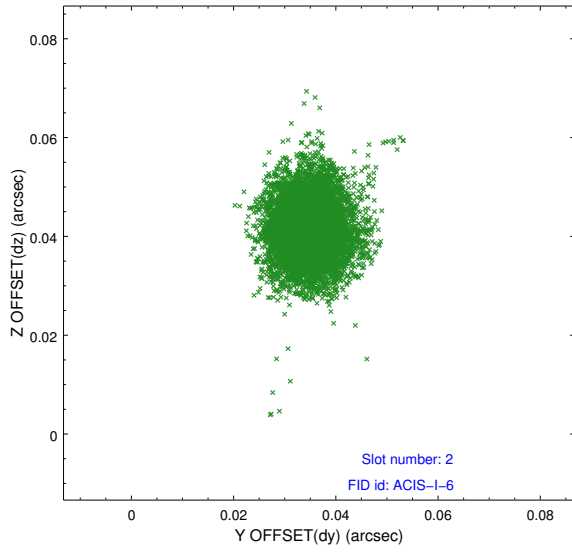
2.5.1 Slot 0



2.5.2 Slot 1



2.5.3 Slot 2



A Summary

A.1 Status

V&V Scientist	Jen Lauer
V&V Date (YYYY-MM-DD)	2012.06.04
V&V Edition	1
V&V Disposition and Status	OK
V&V Charge Time	28.7711002

A.2 Comments