

V&V Reference Report

L2 ASCDS Version : 8.4.5

Observation 10230 - L2 Version 2
Chandra X-Ray Center

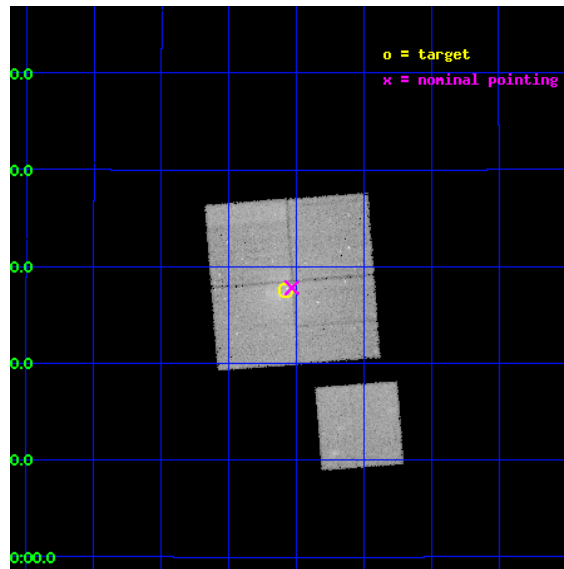
L2 Processing Date : Jun 7 2012

Contents

1	Front	2
2	OBI	3
2.1	OBI	3
2.1.1	Images	3
2.1.2	Bias	3
2.1.3	Parameters	4
2.1.4	Events	4
2.2	Compared Parameters	5
2.3	Aspect	6
2.4	Star Slots	9
2.4.1	Slot 3	9
2.4.2	Slot 4	10
2.4.3	Slot 5	11
2.4.4	Slot 6	12
2.4.5	Slot 7	13
2.5	FID Slots	14
2.5.1	Slot 0	14
2.5.2	Slot 1	15
2.5.3	Slot 2	16
A	Summary	17
A.1	Status	17
A.2	Comments	17

1 Front

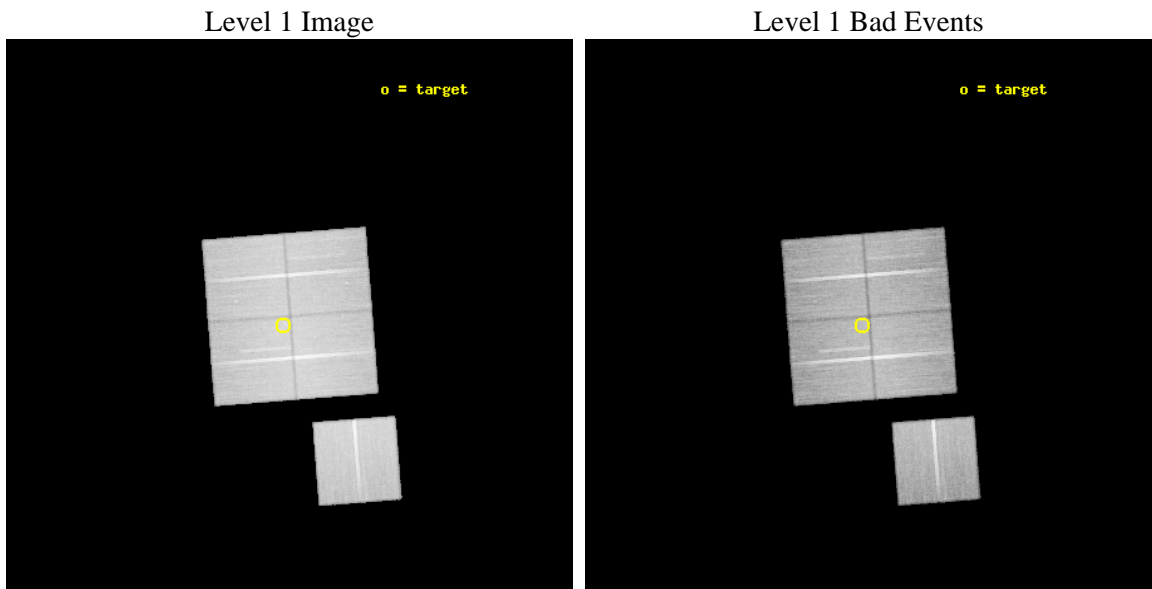
seq_num	701773	Sequence number
obs_id	10230	Observation id
title	Mothering and smothering: AGN in merging galaxies	Proposal title
observer	Prof Diana Worrall	Principal investigator
object	NGC 6099	Source name
dtycle	0	
cycle	P	events from which exps? Prim/Second/Both
ra_targ	243.89375	Observer's specified target RA [deg]
dec_targ	19.458611	Observer's specified target Dec [deg]
ra_nom	243.88332641573	Nominal RA [deg]
dec_nom	19.463662803918	Nominal Dec [deg]
roll_nom	175.56631758922	Nominal Roll [deg]
revision	2	Processing version of data
ontime	45160.677336335	Sum of GTIs [s]
liveltime	44570.619840129	Livetime [s]
ontime0	45160.677356243	Sum of GTIs [s]
ontime1	45157.536316156	Sum of GTIs [s]
ontime2	45163.818336844	Sum of GTIs [s]
ontime3	45160.677336335	Sum of GTIs [s]
ontime6	45160.67727679	Sum of GTIs [s]
l2events	184727	Number of level 2 events



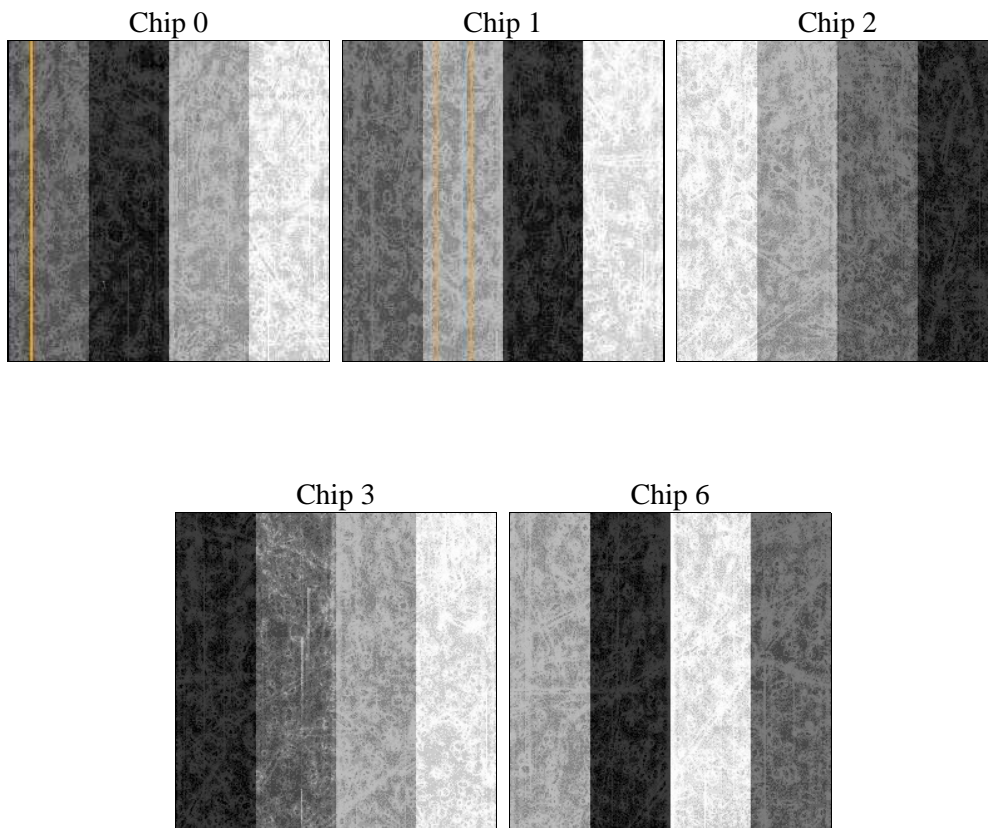
2 OBI

2.1 OBI

2.1.1 Images



2.1.2 Bias



2.1.3 Parameters

obi_num	0	Obi number	sched_exp_time	45000.000000	[s] Scheduled observation exposure time
ascdsver	8.4.5	Processing system revision	ontime	45160.677336335	Sum of GTIs [s]
caldbver	4.4.10	 	ontime0	45160.677356243	Sum of GTIs [s]
date	2012-06-07T18:59:39	Date and time of file creation	ontime1	45157.536316156	Sum of GTIs [s]
revision	2	Processing version of data	ontime2	45163.818336844	Sum of GTIs [s]
			ontime3	45160.677336335	Sum of GTIs [s]
			ontime6	45160.67727679	Sum of GTIs [s]
			l1events	1998442	Number of level 1 events

2.1.4 Events

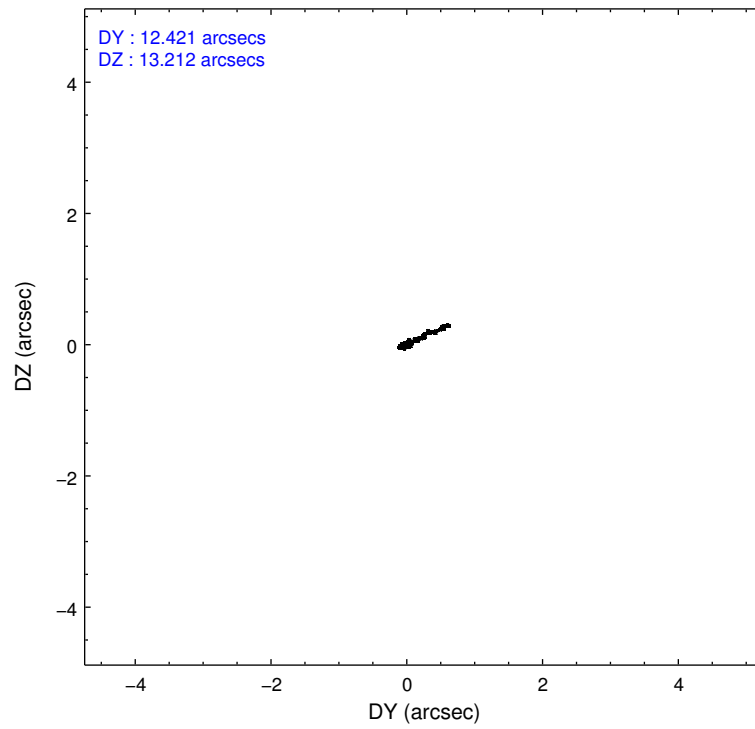
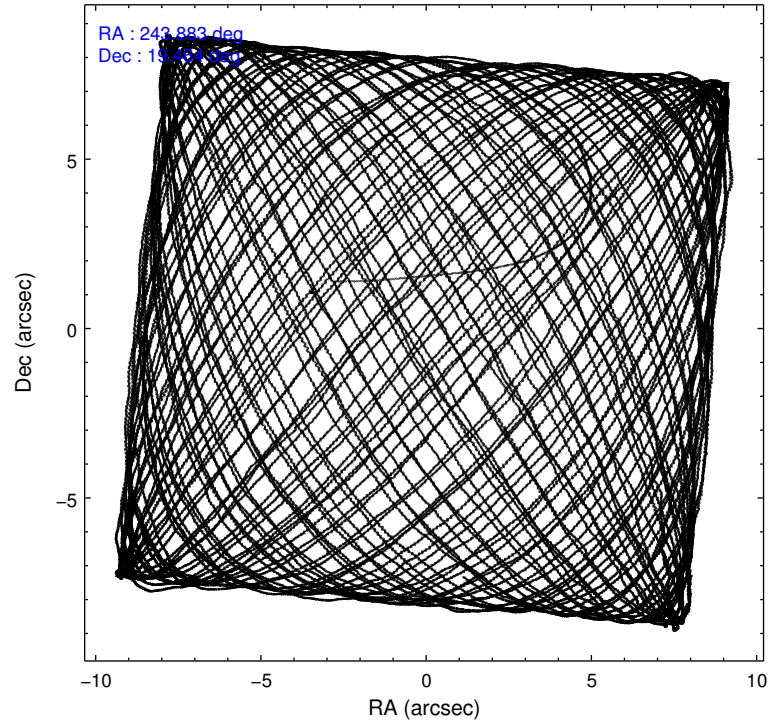
	ccd 0	ccd 1	ccd 2	ccd 3	ccd 6
level 1 events	379047	386650	428520	402530	401695
rejected events	336260	338708	385954	356948	360518
rejected %	88%	87%	90%	88%	89%

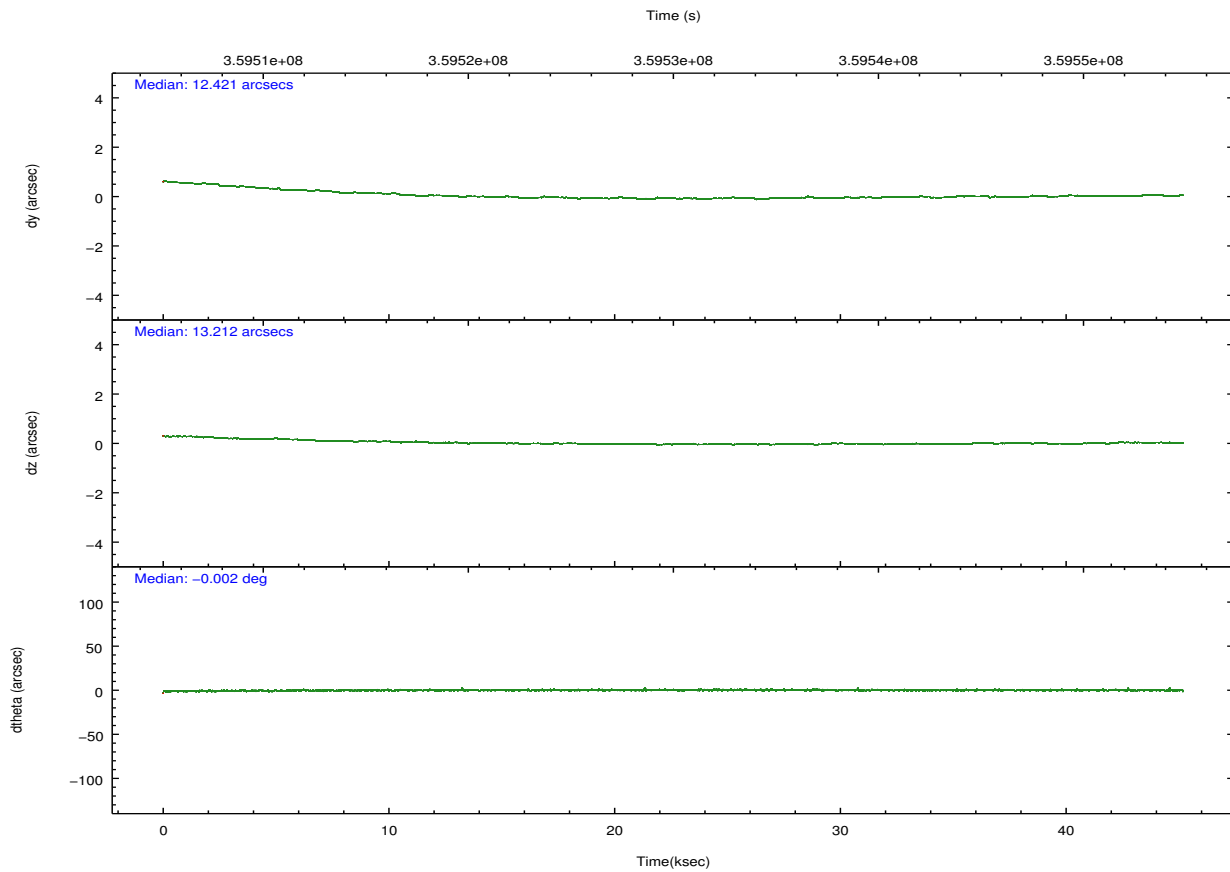
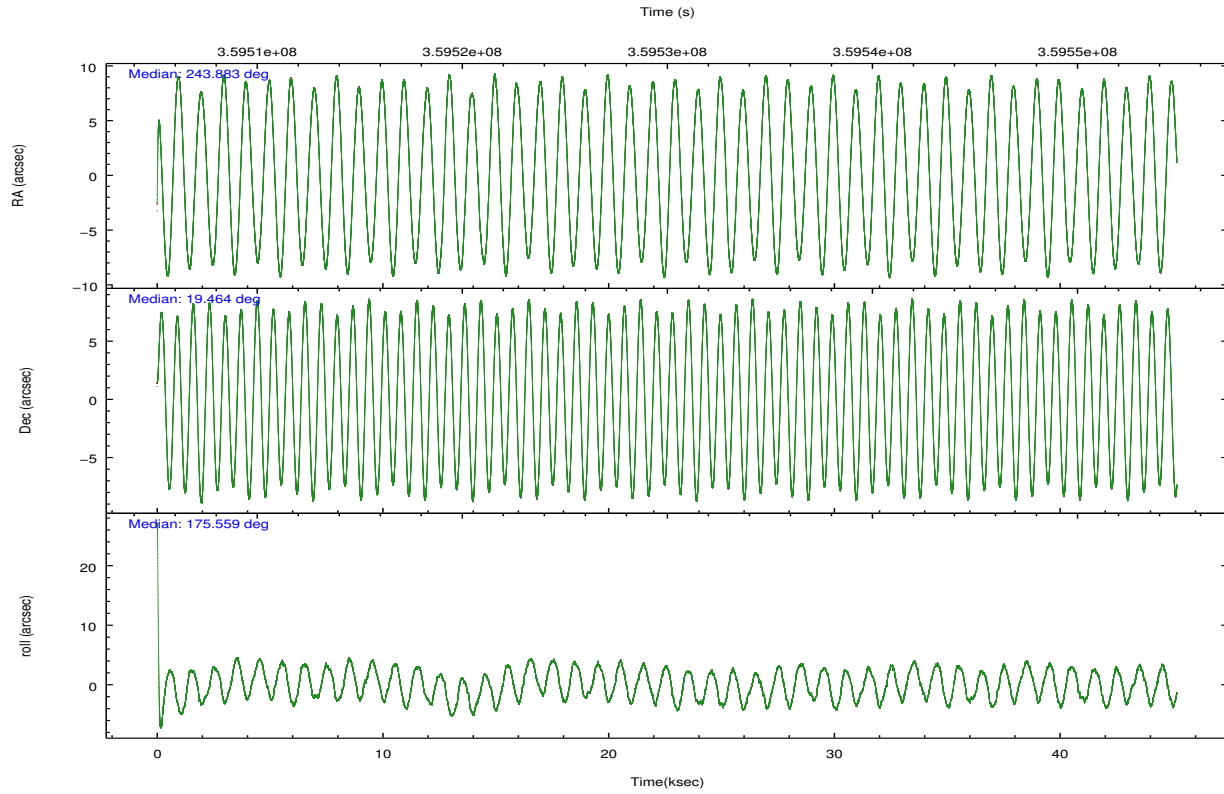
	ccd 0	ccd 1	ccd 2	ccd 3	ccd 6
grade 0 events	16433	19287	17653	20233	15293
	4%	4%	4%	5%	3%
grade 1 events	237	270	288	291	172
	0%	0%	0%	0%	0%
grade 2 events	10395	10898	10020	9434	9333
	2%	2%	2%	2%	2%
grade 3 events	4715	4926	4167	4524	4421
	1%	1%	0%	1%	1%
grade 4 events	4331	4809	4435	4441	4434
	1%	1%	1%	1%	1%
grade 5 events	14725	15926	13673	17062	16281
	3%	4%	3%	4%	4%
grade 6 events	7970	9252	7443	8029	8893
	2%	2%	1%	1%	2%
grade 7 events	320241	321282	370841	338516	342868
	84%	83%	86%	84%	85%

2.2 Compared Parameters

Parameter	Planned	Actual	Parameter	Planned	Actual
Instrument	ACIS	ACIS	Obspar format version number	7	7
Detector	ACIS-01236	ACIS-01236	Obspar file type	PREDICTED	ACTUAL
Grating	NONE	NONE	Obspar update status	NONE	UPDATED
Data mode	VFAINT	VFAINT	CCD I0 on	Y	Y
Observation mode	POINTING	POINTING	CCD I1 on	Y	Y
[deg] Pointing RA	243.909584	243.8833264157341	CCD I2 on	Y	Y
[deg] Pointing Dec	19.475629	19.46366280391829	CCD I3 on	Y	Y
[deg] Pointing Roll	175.348875	175.5663175892181	CCD S0 on	N	N
[mm] SIM focus pos	-0.782348	-0.7809083437167272	CCD S1 on	N	N
[mm] SIM defocus	0	0.001439871863259334	CCD S2 on	O1	Y
[mm] SIM translation stage pos	-233.592463	-233.5874344608287	CCD S3 on	N	N
[mm] SIM translation stage offset	0	-0.005018542100998502	CCD S4 on	N	N
[s] Observation start time (MET)	359507566.184000	359505978.0361	CCD S5 on	N	N
Observation start date	2009-05-23T23:11:40	2009-05-23T22:46:18	Number of optional ACIS chips dropped	0	0
[s] Observation end time (MET)	359552566.184000	359553410.42596	On-chip summing requested	N	N
Observation end date	2009-05-24T11:41:40	2009-05-24T11:56:50	Subarray requested	NONE	NONE
Read mode	TIMED	TIMED	Alternating exposures requested	N	N
			[s] Primary exposure time	0.000000	3.1

2.3 Aspect



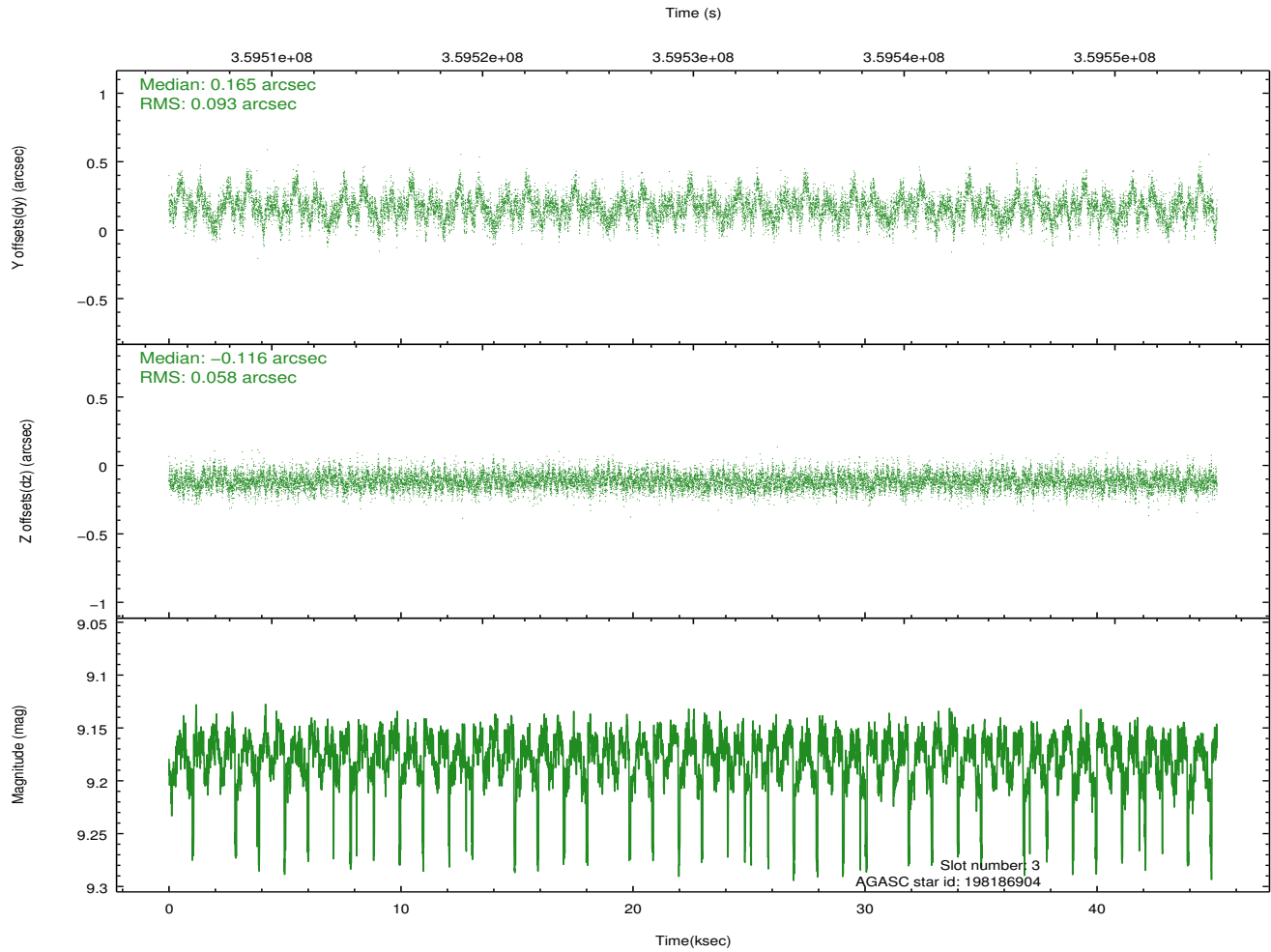
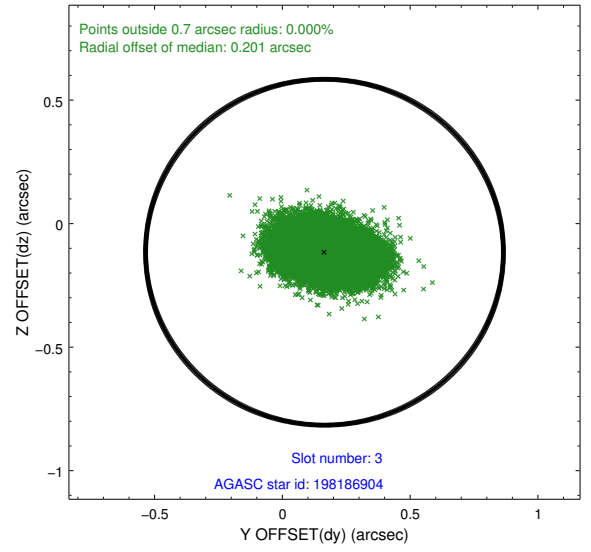
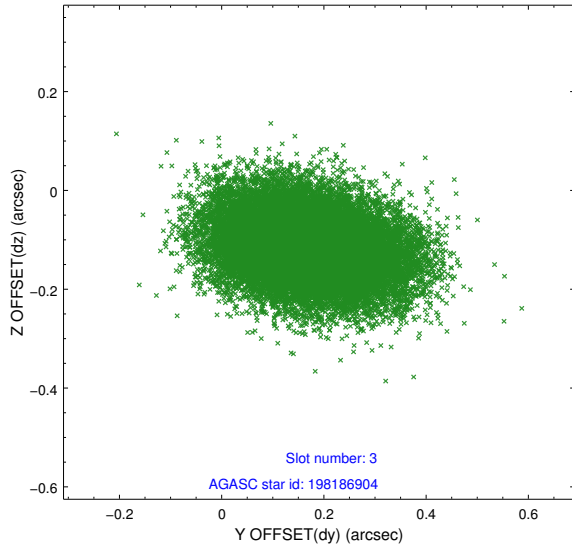


Slot Statistics

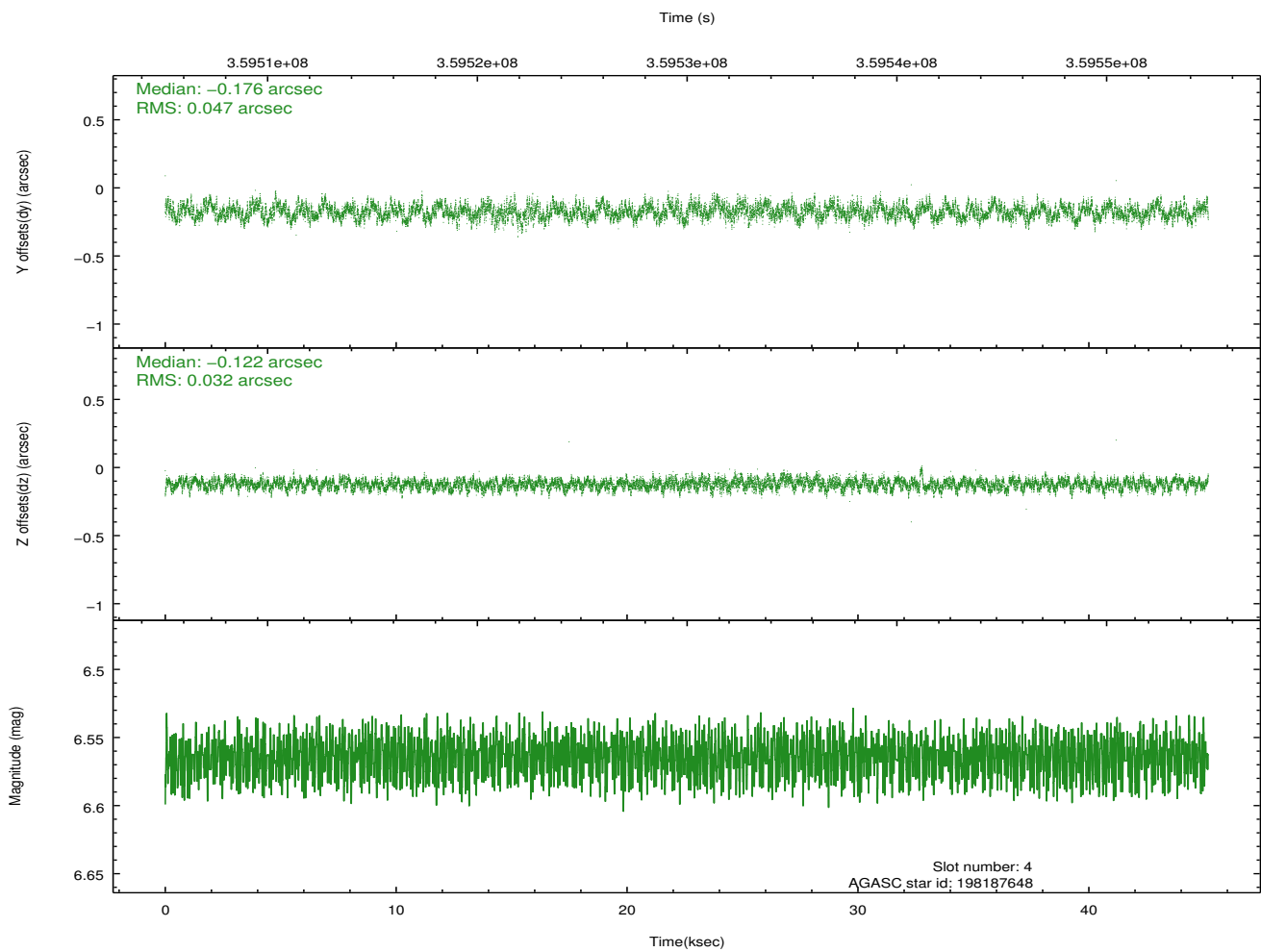
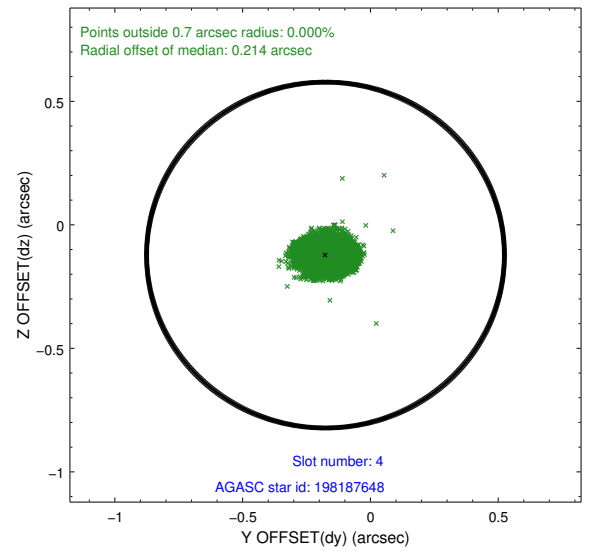
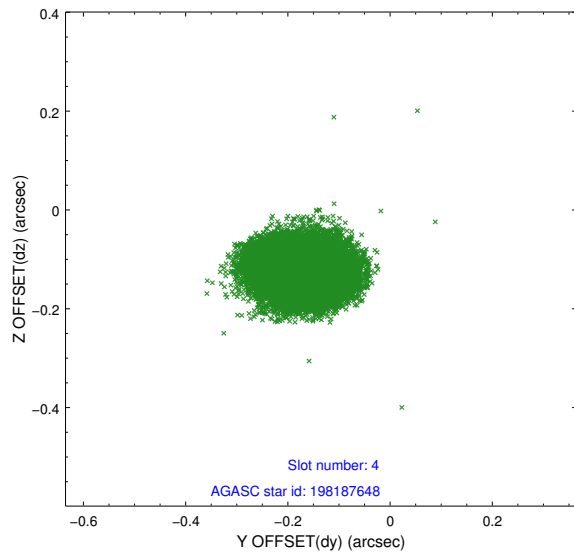
slot	status	id	mag	n_pts	med_dy	med_dz	dr1	dr2	ra	dec	mean_y	mean_z
0	FID	ACIS-I-1	7.10	11018	0.053	-0.006	0.007	0.013	0.000000	0.000000	927.11	-836.80
1	FID	ACIS-I-5	7.09	11019	-0.207	0.061	0.009	0.018	0.000000	0.000000	-1821.28	1060.74
2	FID	ACIS-I-6	7.09	11018	0.063	0.015	0.009	0.017	0.000000	0.000000	392.65	1705.21
3	GUIDE	198186904	9.18	21890	0.165	-0.116	0.114	0.197	243.275026	20.014418	2297.60	-1762.88
4	GUIDE	198187648	6.56	22037	-0.176	-0.122	0.061	0.098	243.214331	19.101550	2248.85	1529.71
5	GUIDE	198318856	9.92	21938	-0.002	0.296	0.144	0.226	244.545752	19.978053	-1997.96	-1981.17
6	GUIDE	198320800	7.93	22029	0.168	0.153	0.063	0.099	244.060763	19.524772	-496.71	-220.47
7	GUIDE	198321752	6.88	22035	-0.157	-0.211	0.064	0.103	244.239853	18.846043	-1305.58	2166.57

2.4 Star Slots

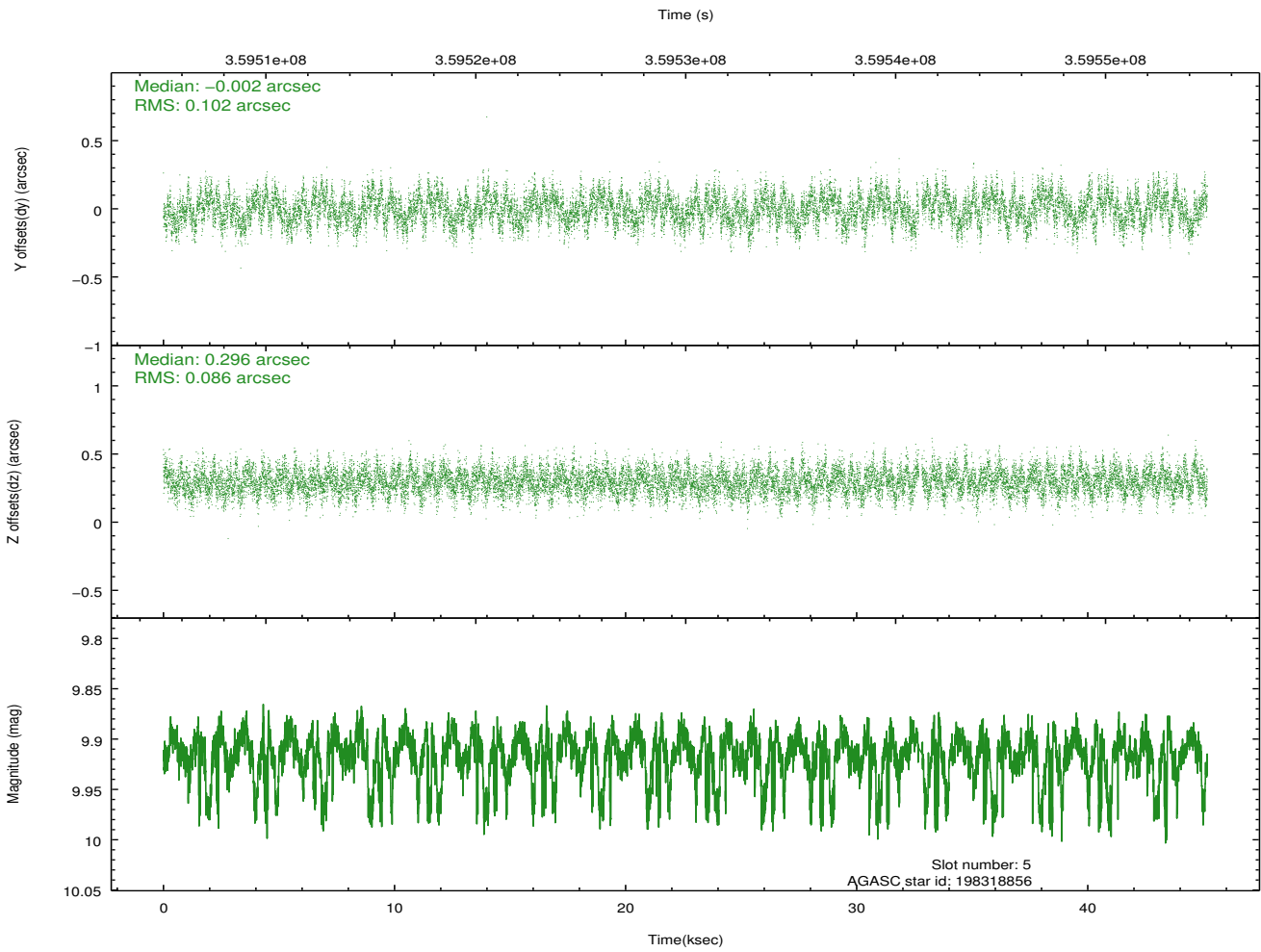
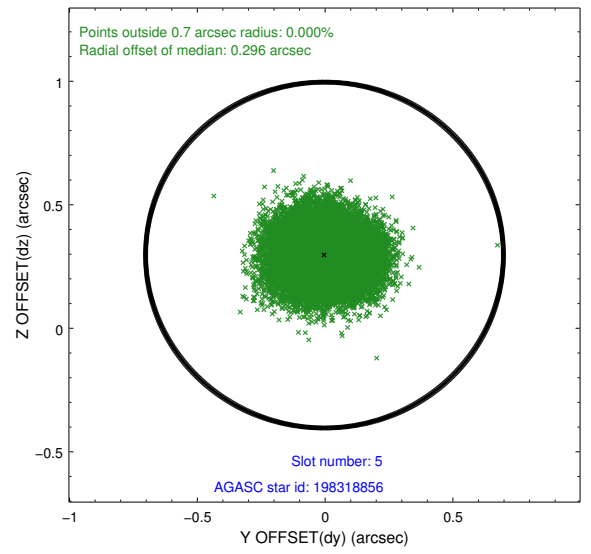
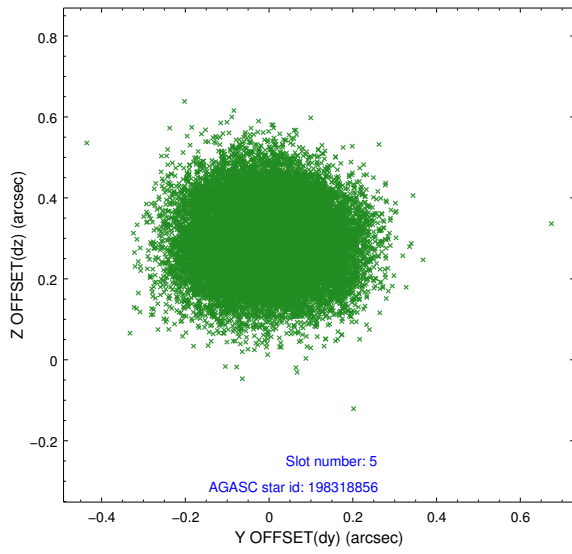
2.4.1 Slot 3



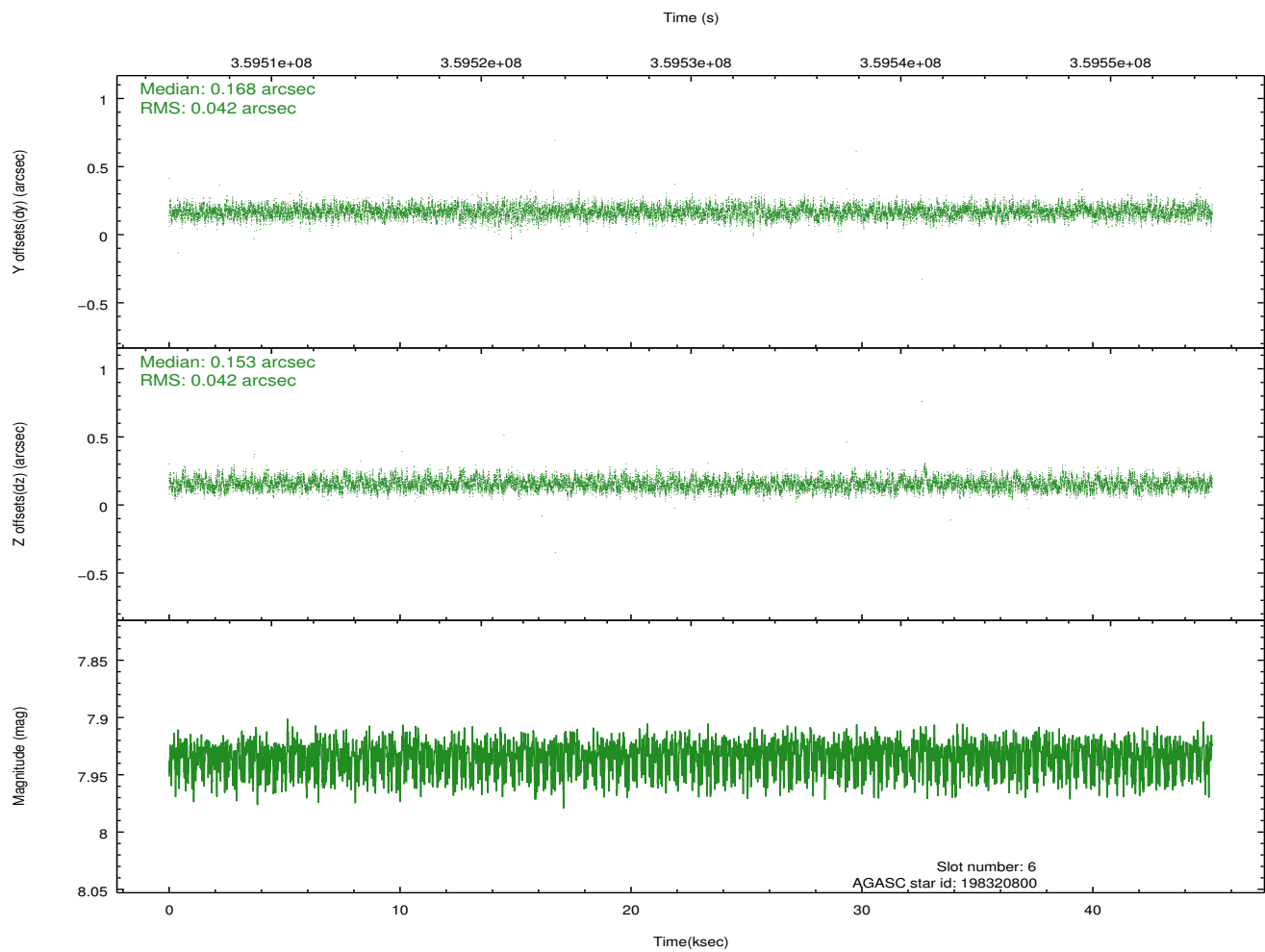
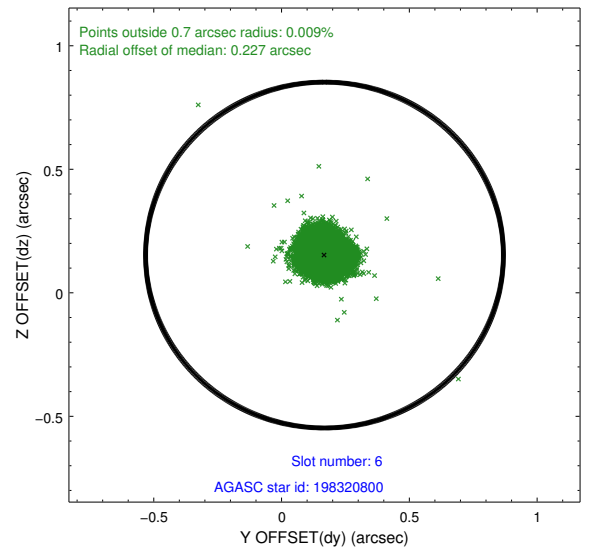
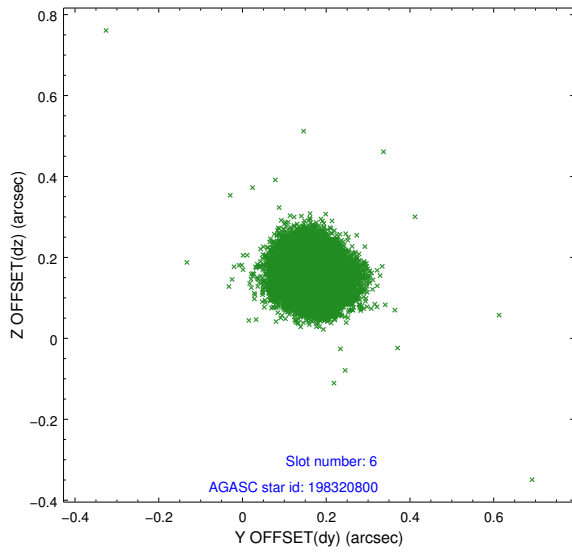
2.4.2 Slot 4



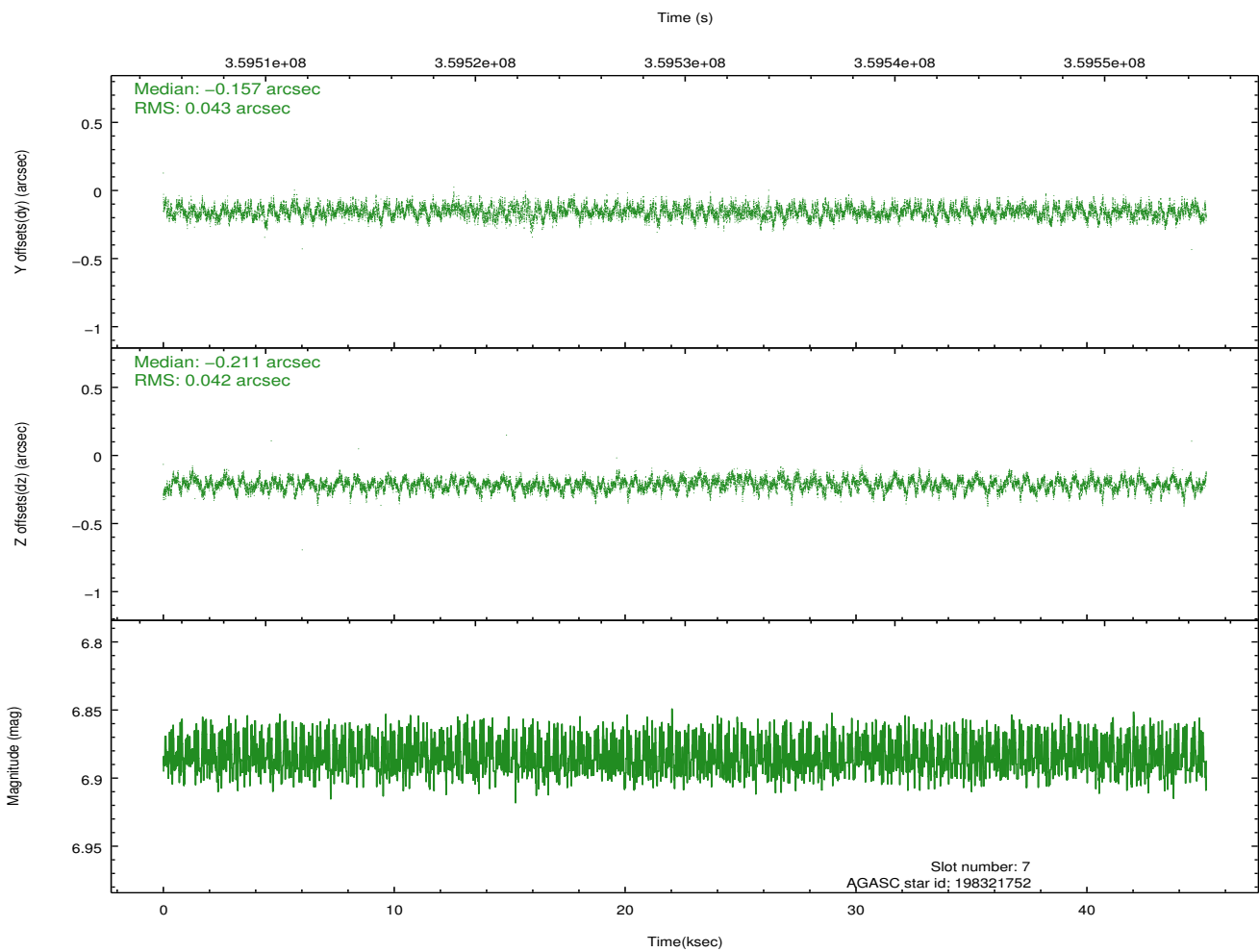
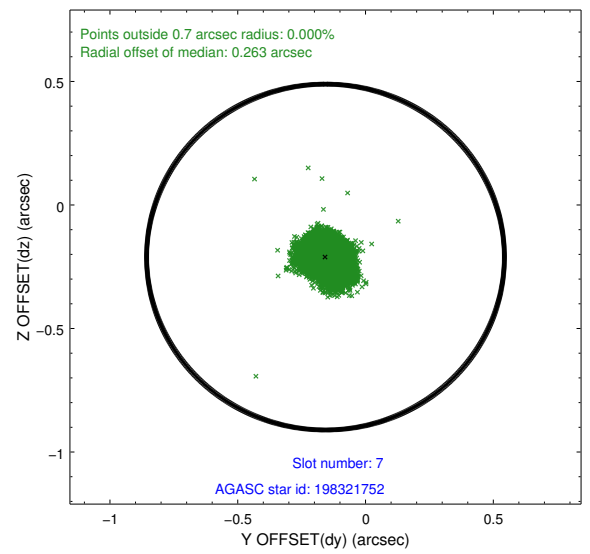
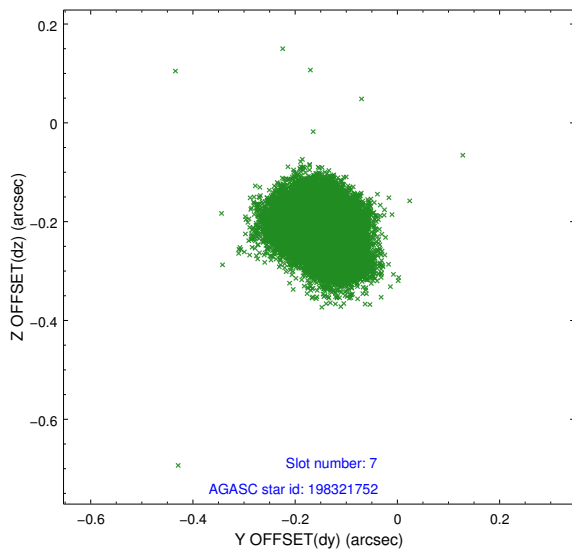
2.4.3 Slot 5



2.4.4 Slot 6

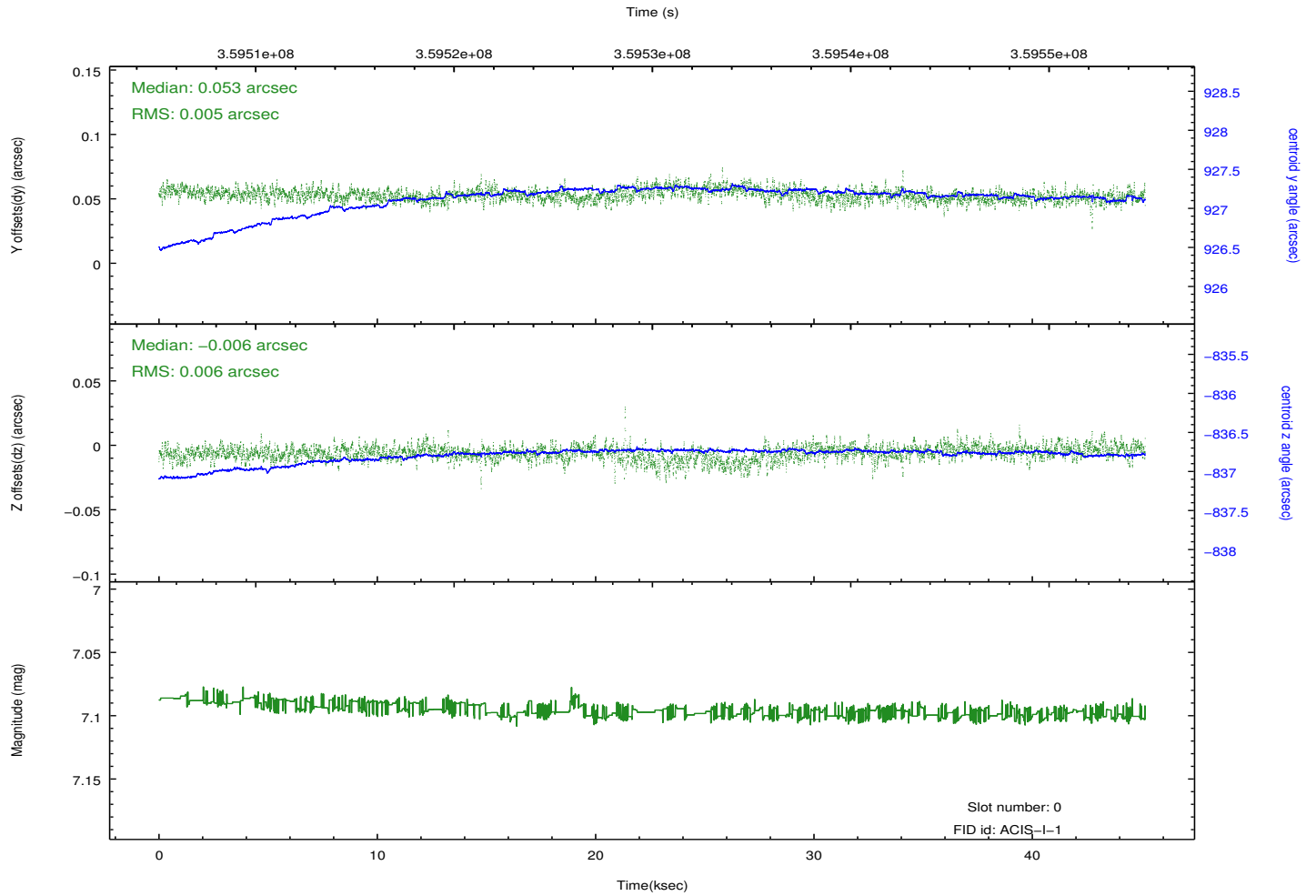
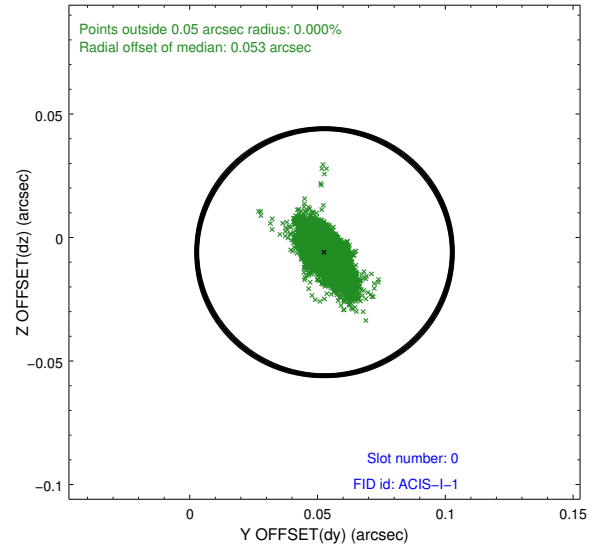
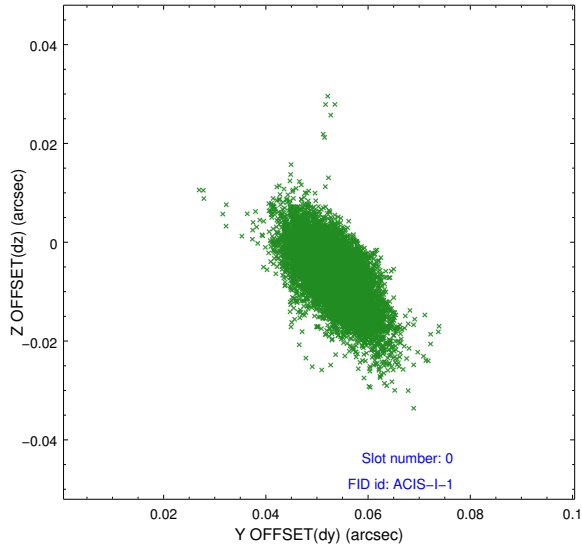


2.4.5 Slot 7

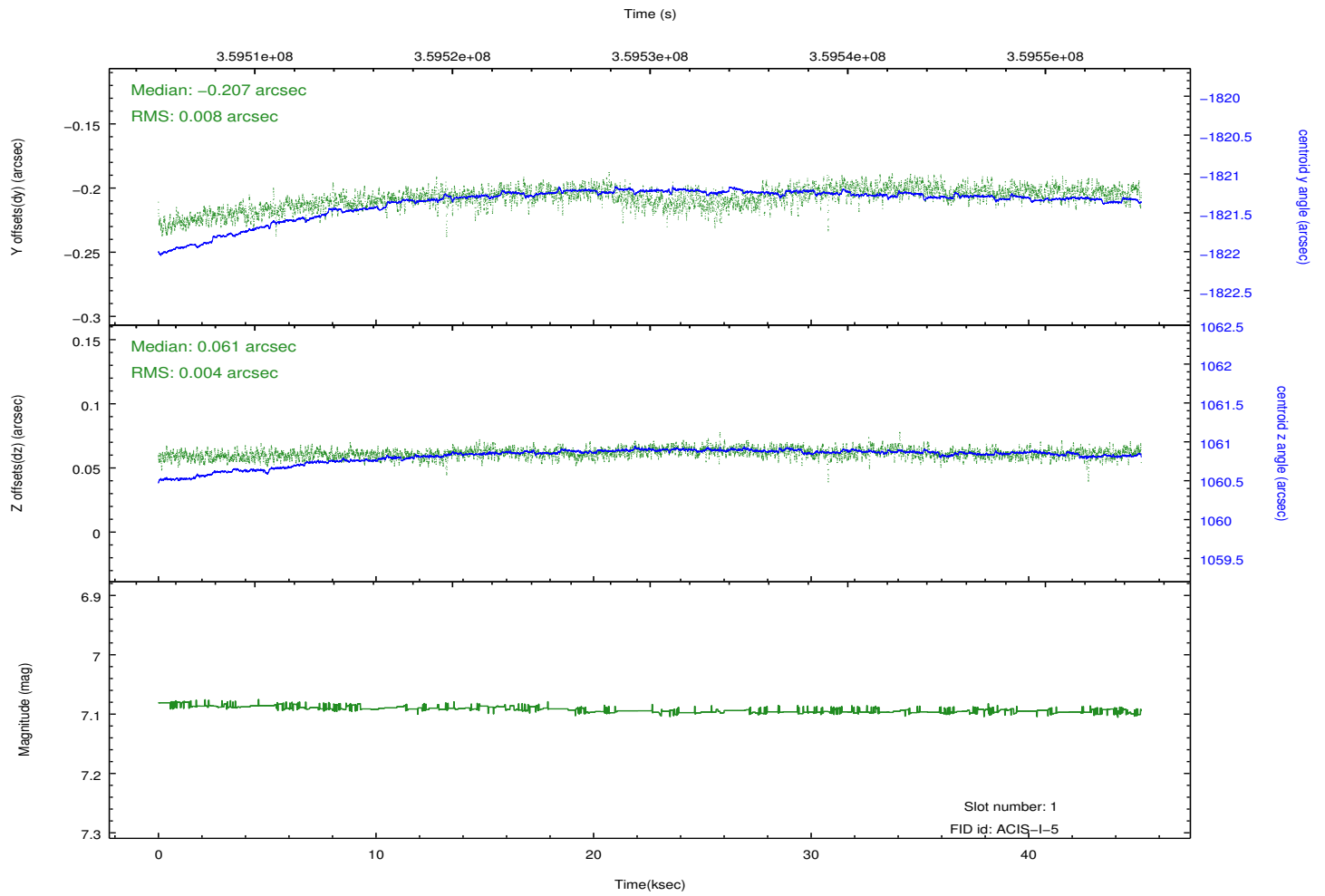
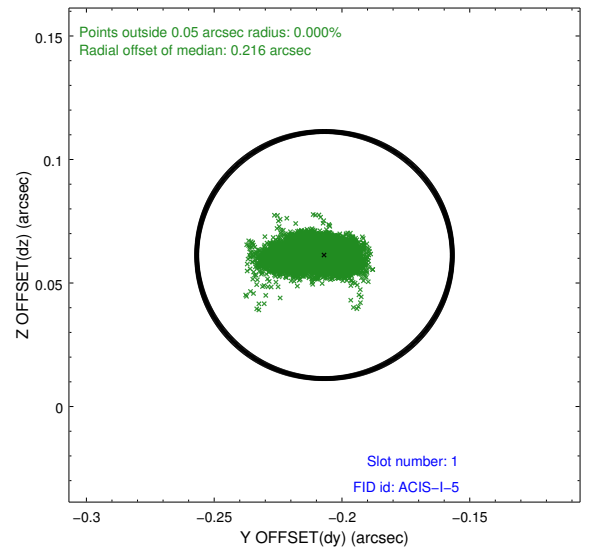
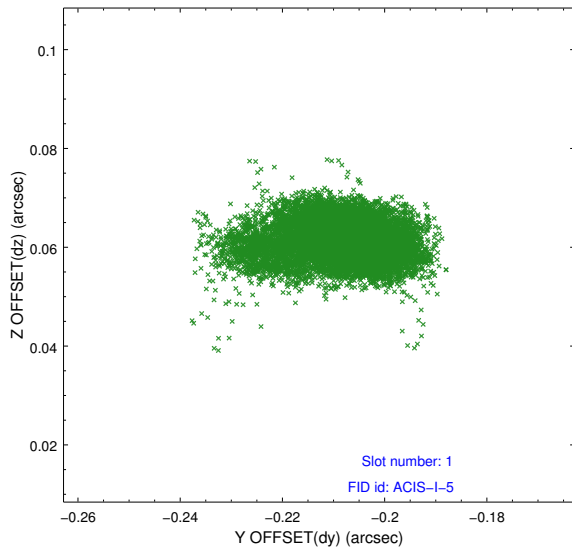


2.5 FID Slots

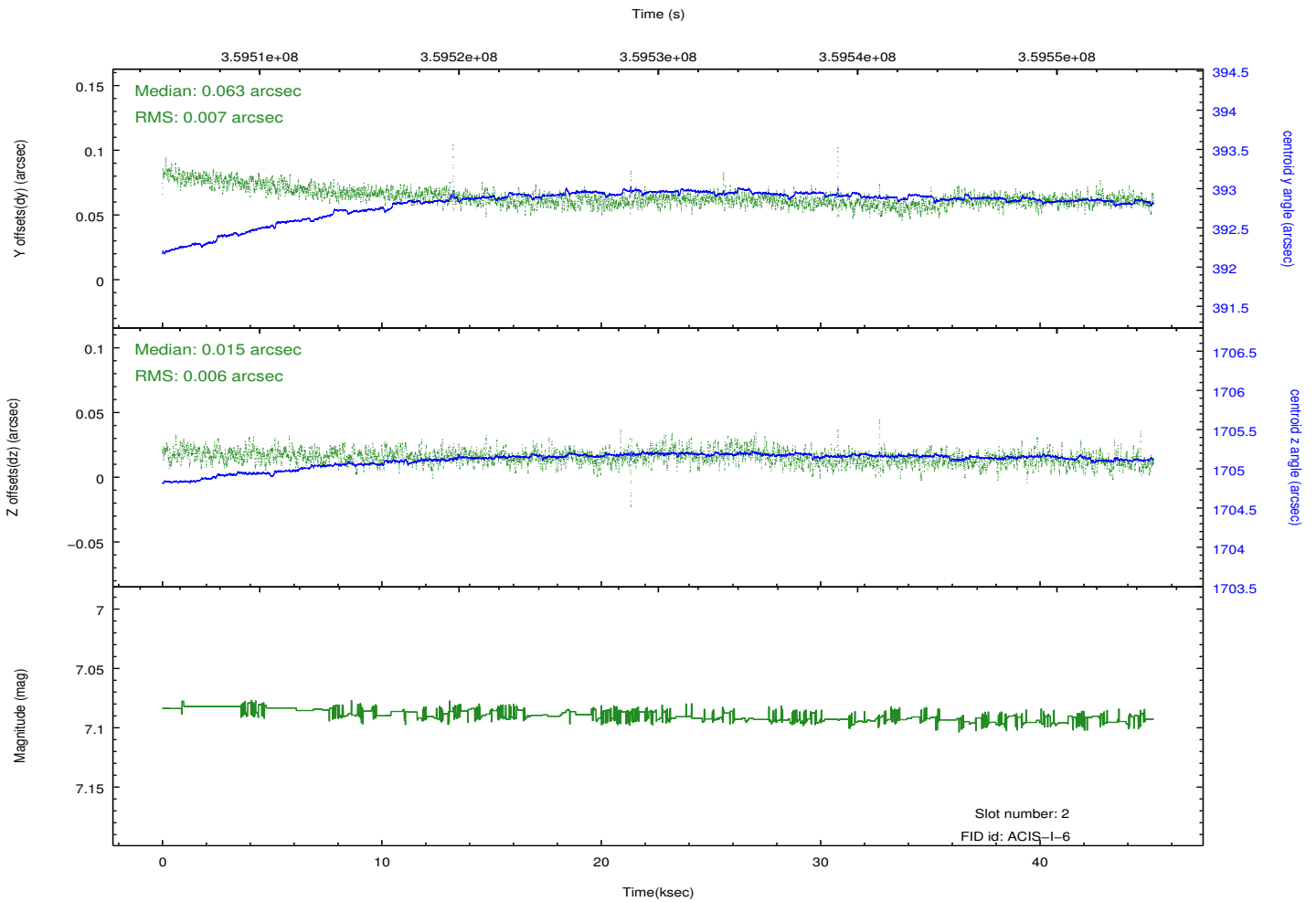
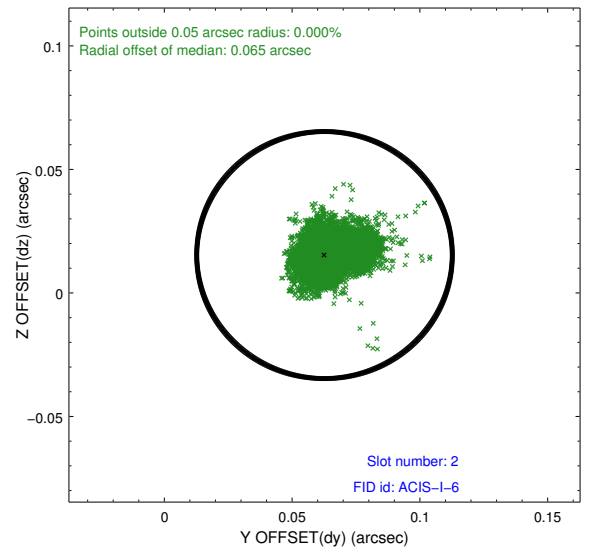
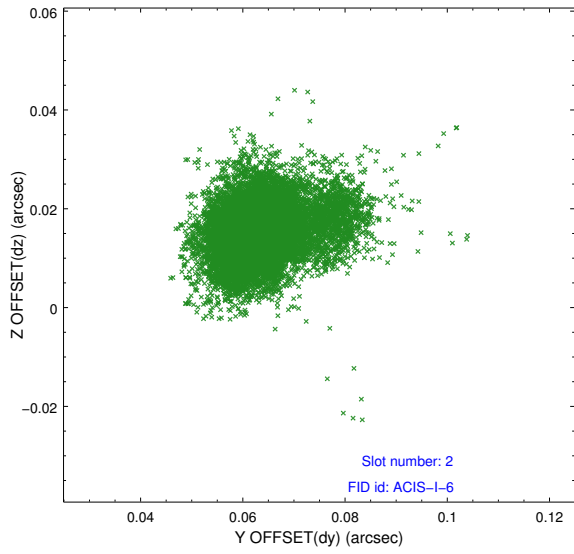
2.5.1 Slot 0



2.5.2 Slot 1



2.5.3 Slot 2



A Summary

A.1 Status

V&V Scientist	Jen Lauer
V&V Date (YYYY-MM-DD)	2012.06.11
V&V Edition	1
V&V Disposition and Status	OK
V&V Charge Time	45.1606773

A.2 Comments

Joint proposal with NRAO.