

V&V Reference Report

L2 ASCDS Version : 8.4.4

Observation 10800 - L2 Version 2
Chandra X-Ray Center

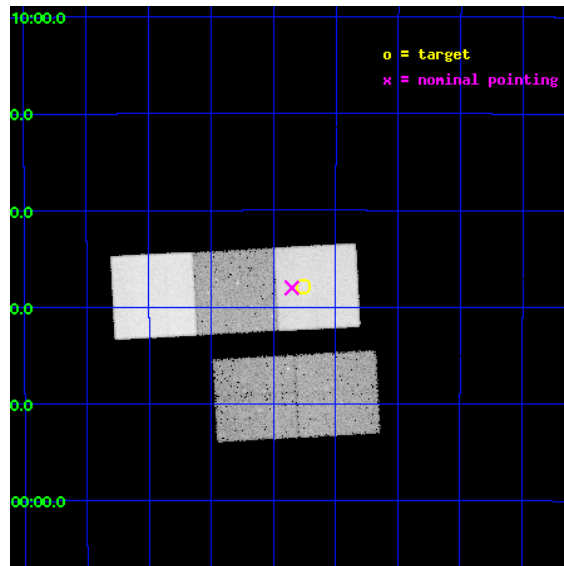
L2 Processing Date : May 23 2012

Contents

1	Front	2
2	OBI	3
2.1	OBI	3
2.1.1	Images	3
2.1.2	Bias	3
2.1.3	Parameters	4
2.1.4	Events	4
2.2	Compared Parameters	5
2.3	Aspect	6
2.4	Star Slots	9
2.4.1	Slot 3	9
2.4.2	Slot 4	10
2.4.3	Slot 5	11
2.4.4	Slot 6	12
2.4.5	Slot 7	13
2.5	FID Slots	14
2.5.1	Slot 0	14
2.5.2	Slot 1	15
2.5.3	Slot 2	16
A	Summary	17
A.1	Status	17
A.2	Comments	17

1 Front

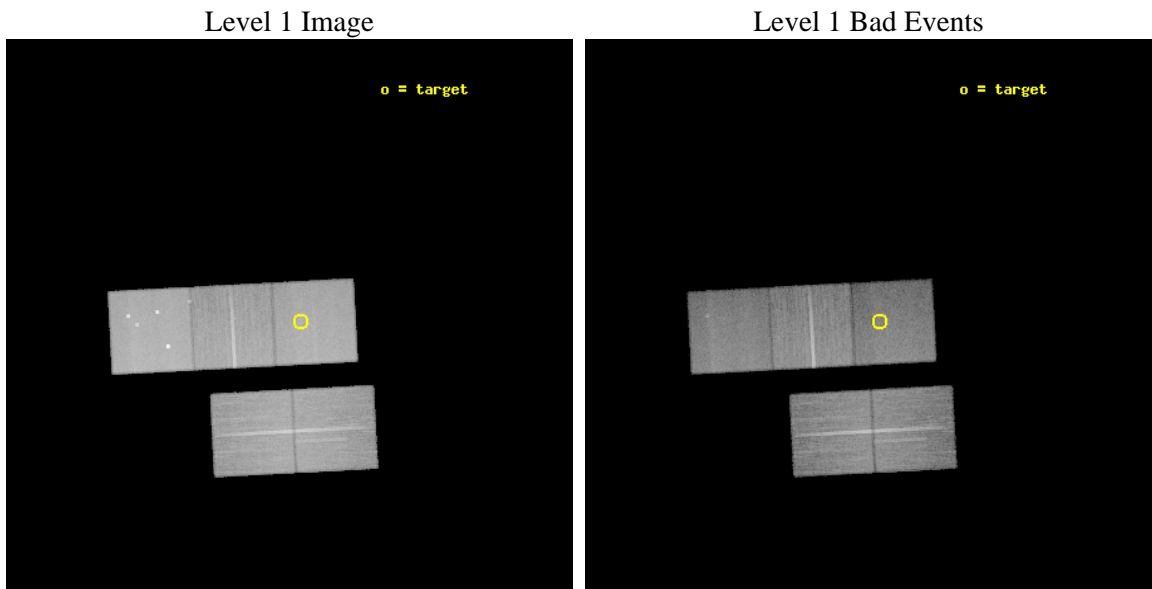
seq_num	800828	Sequence number
obs_id	10800	Observation id
title	The Formation of Brightest Cluster Galaxies	Proposal title
observer	Dr. John Mulchaey	Principal investigator
object	MZ 10451	Source name
dtcycle	0	
cycle	P	events from which exps? Prim/Second/Both
ra_targ	37.439167	Observer's specified target RA [deg]
dec_targ	-29.630778	Observer's specified target Dec [deg]
ra_nom	37.462960154282	Nominal RA [deg]
dec_nom	-29.633532493913	Nominal Dec [deg]
roll_nom	356.96377659737	Nominal Roll [deg]
revision	2	Processing version of data
ontime	28535.500219464	Sum of GTIs [s]
livetime	28162.662901567	Livetime [s]
ontime2	28532.35920912	Sum of GTIs [s]
ontime3	28532.359209061	Sum of GTIs [s]
ontime5	28535.500219464	Sum of GTIs [s]
ontime6	28532.359258711	Sum of GTIs [s]
ontime7	28535.500219464	Sum of GTIs [s]
l2events	334568	Number of level 2 events



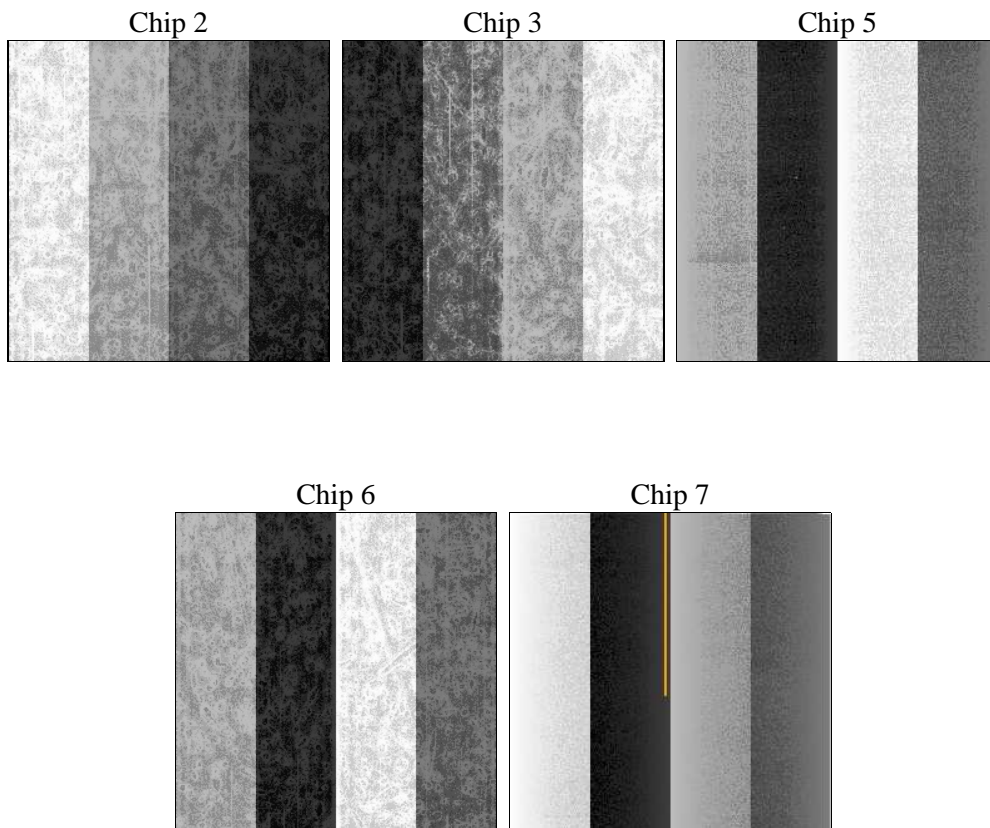
2 OBI

2.1 OBI

2.1.1 Images



2.1.2 Bias



2.1.3 Parameters

obi_num	0	Obi number	sched_exp_time	28500.000000	[s] Scheduled observation exposure time
ascdsver	8.4.4	Processing system revision	ontime	28535.500219464	Sum of GTIs [s]
caldbver	4.4.9	 	ontime2	28532.35920912	Sum of GTIs [s]
date	2012-05-23T13:18:54	Date and time of file creation	ontime3	28532.359209061	Sum of GTIs [s]
revision	2	Processing version of data	ontime5	28535.500219464	Sum of GTIs [s]
			ontime6	28532.359258711	Sum of GTIs [s]
			ontime7	28535.500219464	Sum of GTIs [s]
			l1events	1320292	Number of level 1 events

2.1.4 Events

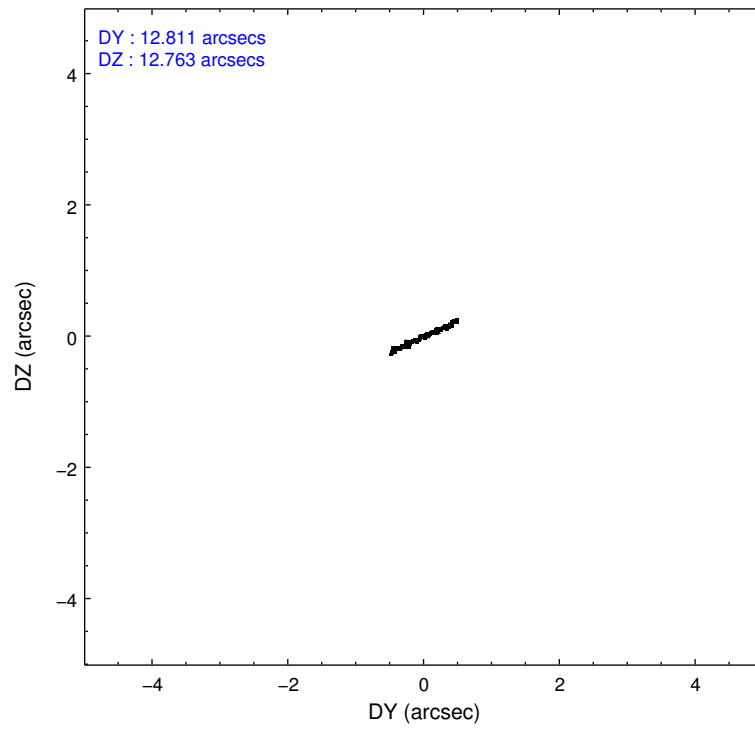
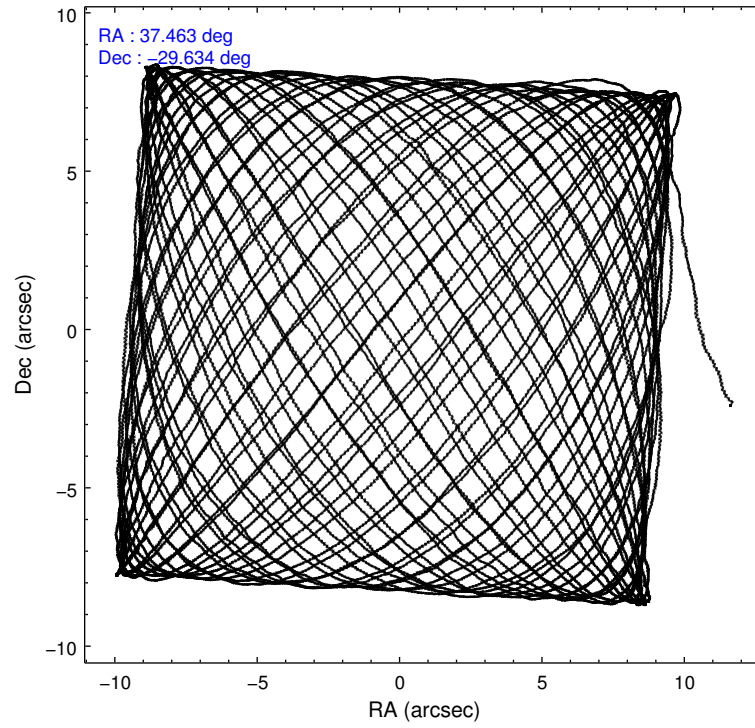
	ccd 2	ccd 3	ccd 5	ccd 6	ccd 7
level 1 events	241581	225471	343462	238955	270823
rejected events	218742	203429	168118	213968	148771
rejected %	90%	90%	48%	89%	54%

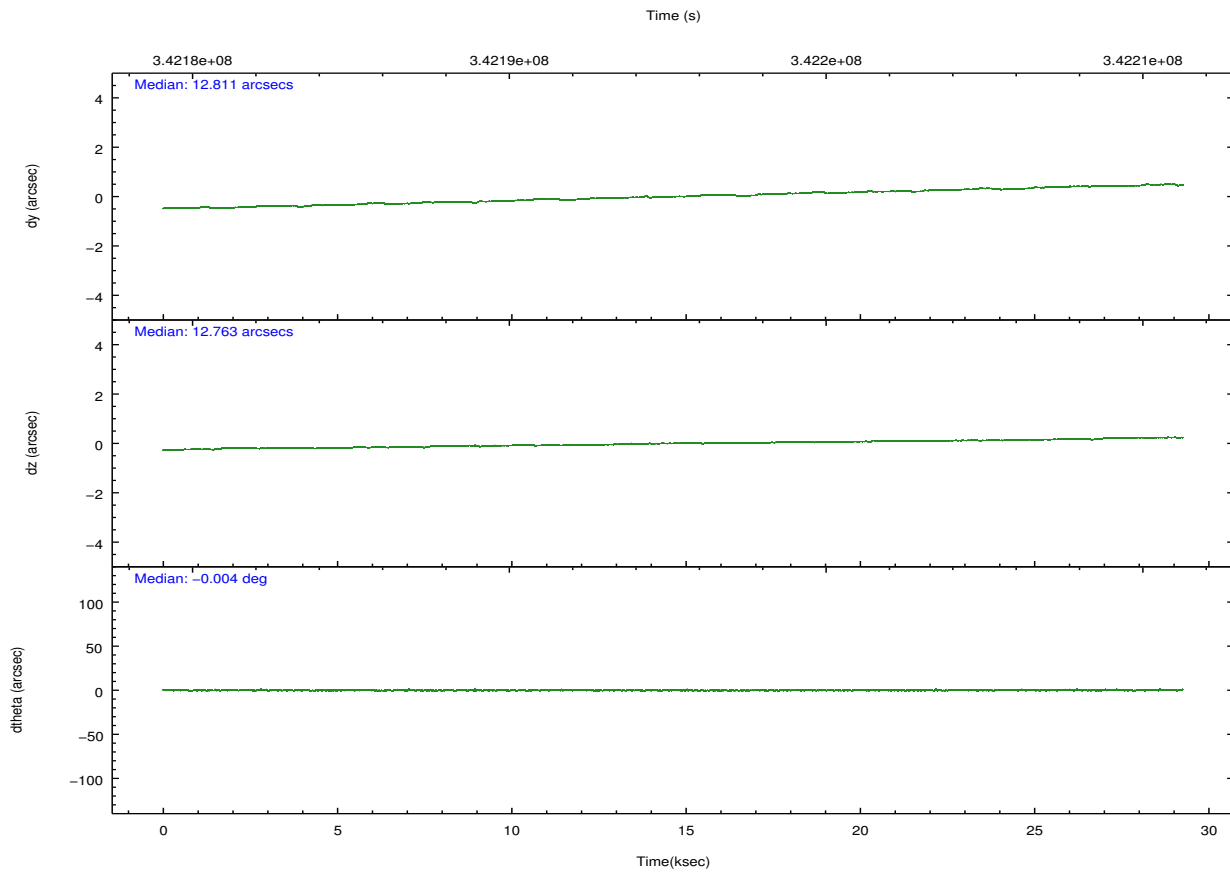
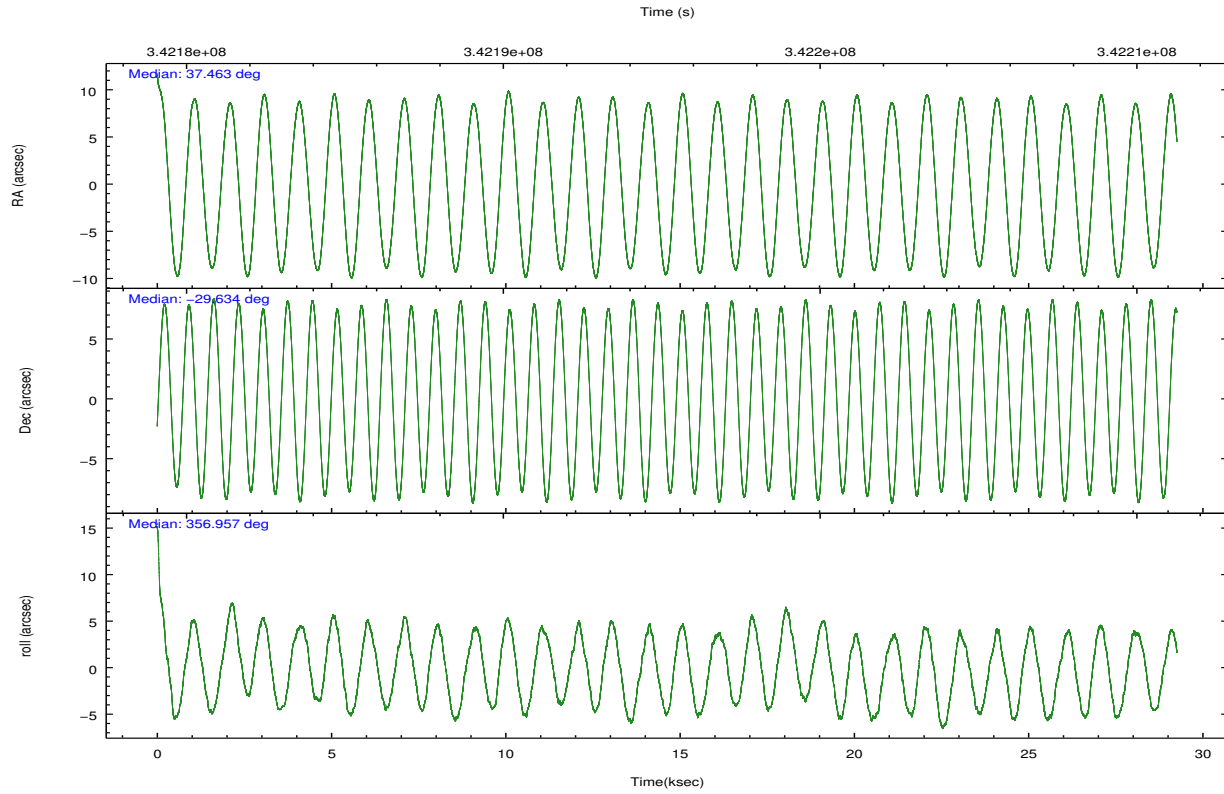
	ccd 2	ccd 3	ccd 5	ccd 6	ccd 7
grade 0 events	8114	7673	25230	8771	11426
	3%	3%	7%	3%	4%
grade 1 events	128	136	851	107	324
	0%	0%	0%	0%	0%
grade 2 events	5466	4746	49631	5475	24466
	2%	2%	14%	2%	9%
grade 3 events	2440	2557	6754	2603	11184
	1%	1%	1%	1%	4%
grade 4 events	2595	2533	6496	2683	11024
	1%	1%	1%	1%	4%
grade 5 events	7762	9721	25930	9886	28119
	3%	4%	7%	4%	10%
grade 6 events	4230	4538	87250	5463	63968
	1%	2%	25%	2%	23%
grade 7 events	210846	193567	141320	203967	120312
	87%	85%	41%	85%	44%

2.2 Compared Parameters

Parameter	Planned	Actual	Parameter	Planned	Actual
Instrument	ACIS	ACIS	Obspar format version number	7	7
Detector	ACIS-23567	ACIS-23567	Obspar file type	PREDICTED	ACTUAL
Grating	NONE	NONE	Obspar update status	NONE	UPDATED
Data mode	VFAINT	VFAINT	CCD I0 on	N	N
Observation mode	POINTING	POINTING	CCD I1 on	N	N
[deg] Pointing RA	37.435093	37.46296015428192	CCD I2 on	O1	Y
[deg] Pointing Dec	-29.646271	-29.63353249391277	CCD I3 on	O2	Y
[deg] Pointing Roll	356.793363	356.9637765973679	CCD S0 on	N	N
[mm] SIM focus pos	-0.684267	-0.6828225247311905	CCD S1 on	Y	Y
[mm] SIM defocus	0	0.001444936568705701	CCD S2 on	Y	Y
[mm] SIM translation stage pos	-190.132523	-190.1425803651734	CCD S3 on	Y	Y
[mm] SIM translation stage offset	0	0.01005778216563158	CCD S4 on	N	N
[s] Observation start time (MET)	342181298.184000	342180080.83944	CCD S5 on	N	N
Observation start date	2008-11-04T10:20:33	2008-11-04T10:01:20	Number of optional ACIS chips dropped	0	0
[s] Observation end time (MET)	342209798.184000	342210610.97845	On-chip summing requested	N	N
Observation end date	2008-11-04T18:15:33	2008-11-04T18:30:10	Subarray requested	NONE	NONE
Read mode	TIMED	TIMED	Alternating exposures requested	N	N
			[s] Primary exposure time	0.000000	3.1

2.3 Aspect



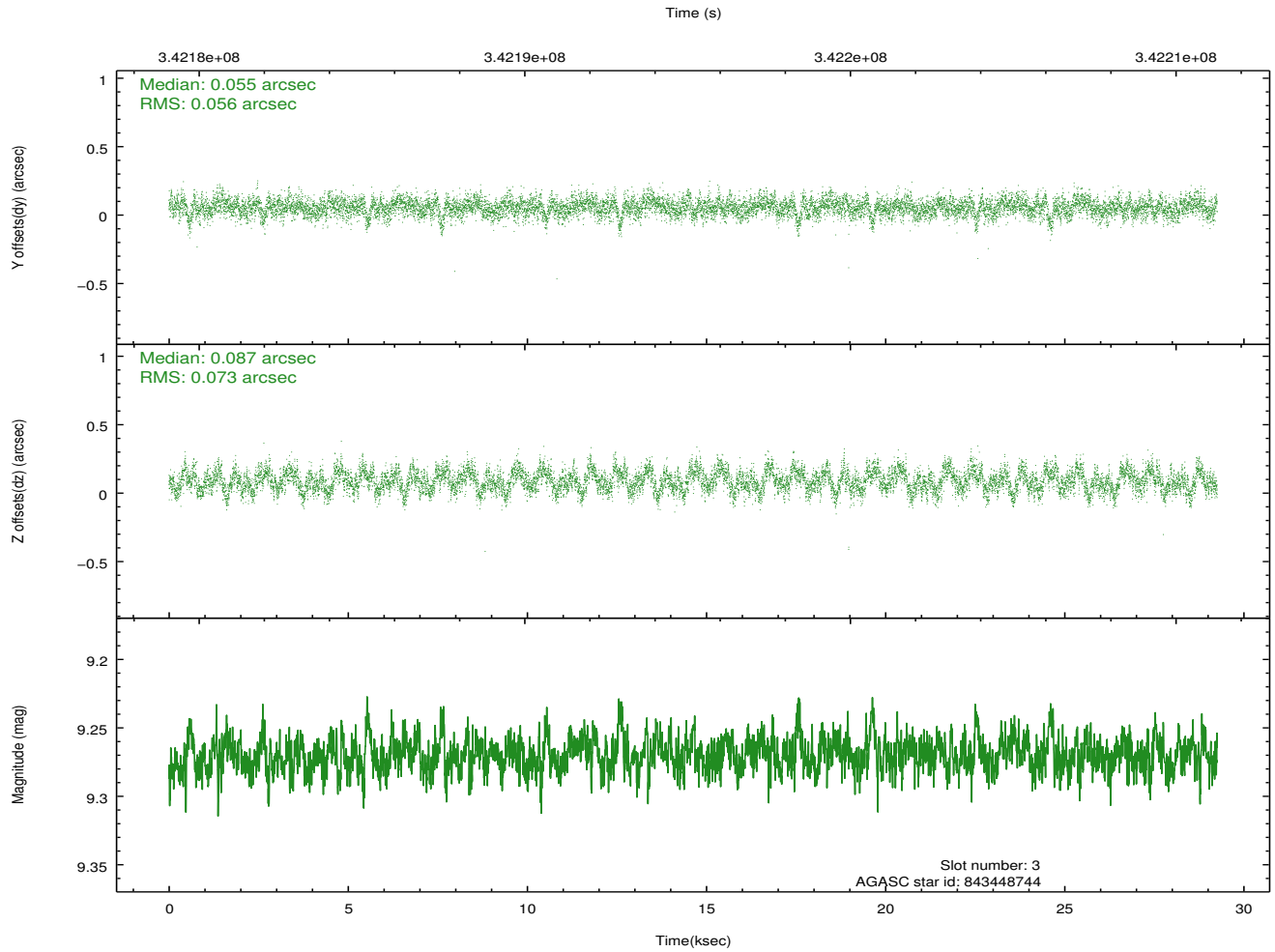
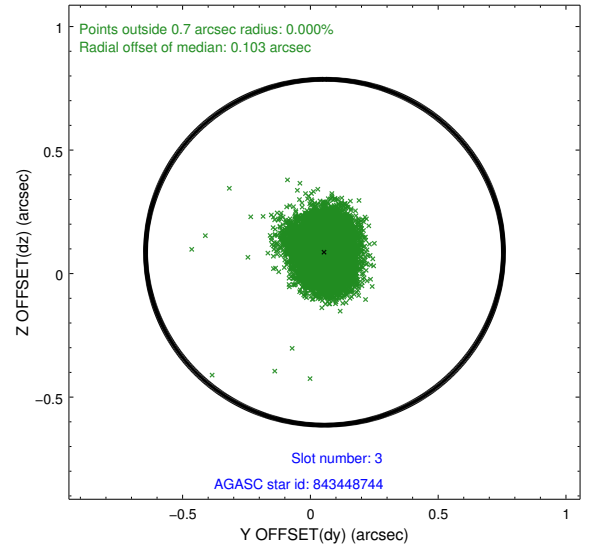
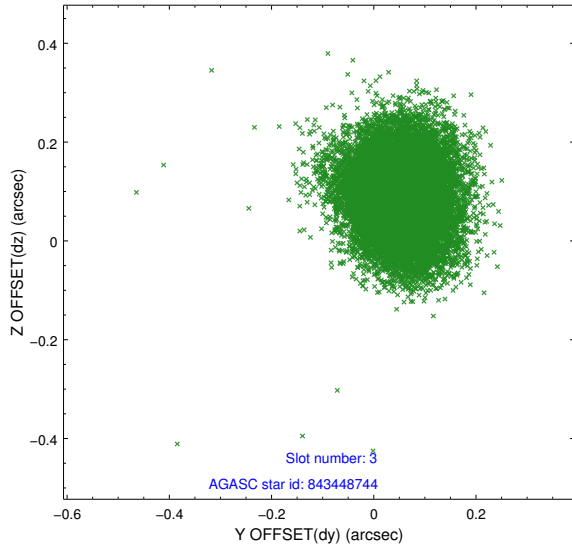


Slot Statistics

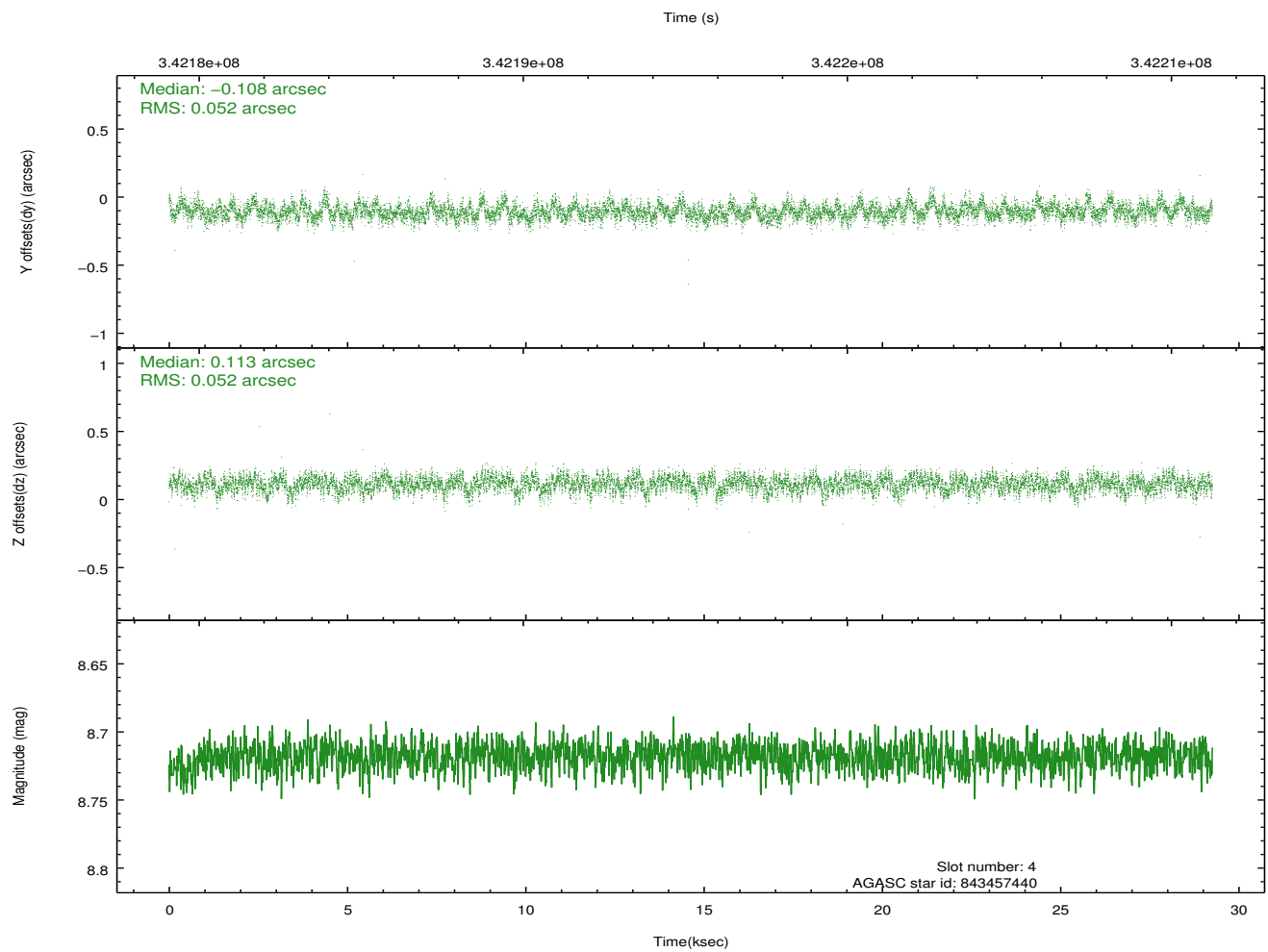
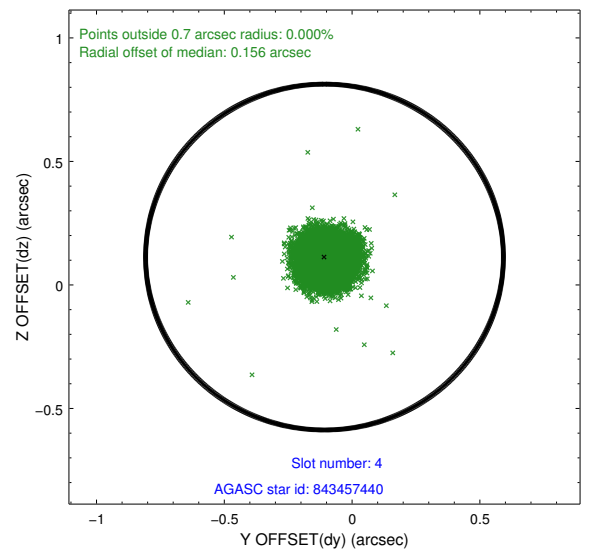
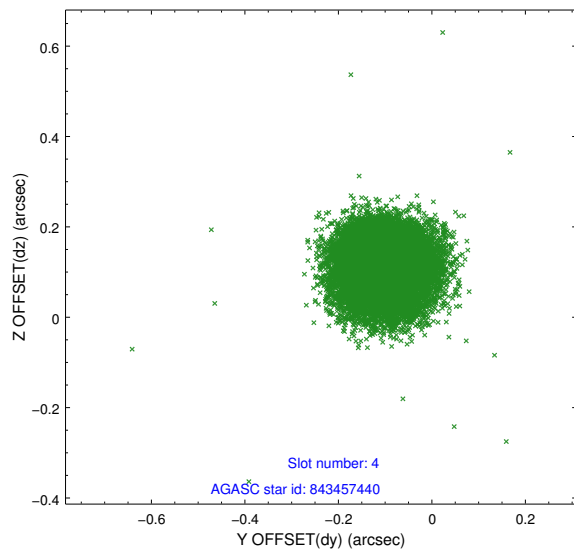
slot	status	id	mag	n_pts	med_dy	med_dz	dr1	dr2	ra	dec	mean_y	mean_z
0	FID	ACIS-S-2	6.95	7137	-0.015	-0.037	0.008	0.014	0.000000	0.000000	-765.74	-1734.05
1	FID	ACIS-S-4	7.04	7136	0.139	0.017	0.010	0.018	0.000000	0.000000	2147.66	174.39
2	FID	ACIS-S-5	7.07	7137	-0.156	0.029	0.010	0.018	0.000000	0.000000	-1818.61	168.18
3	GUIDE	843448744	9.27	14250	0.055	0.087	0.099	0.158	37.502677	-29.743106	230.61	-336.21
4	GUIDE	843457440	8.72	14268	-0.108	0.113	0.078	0.125	36.962323	-29.716224	-1461.37	-338.19
5	GUIDE	843465384	9.07	14257	-0.062	-0.055	0.097	0.161	37.150341	-29.273307	-967.89	1289.40
6	GUIDE	918817696	9.40	14253	0.027	-0.054	0.121	0.197	37.946127	-30.001076	1662.92	-1189.43
7	GUIDE	918815240	9.62	14211	0.080	-0.089	0.123	0.193	37.793052	-30.348646	1252.97	-2464.09

2.4 Star Slots

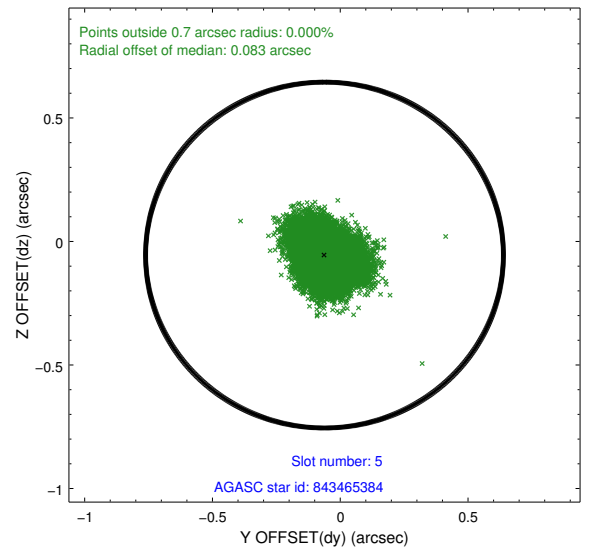
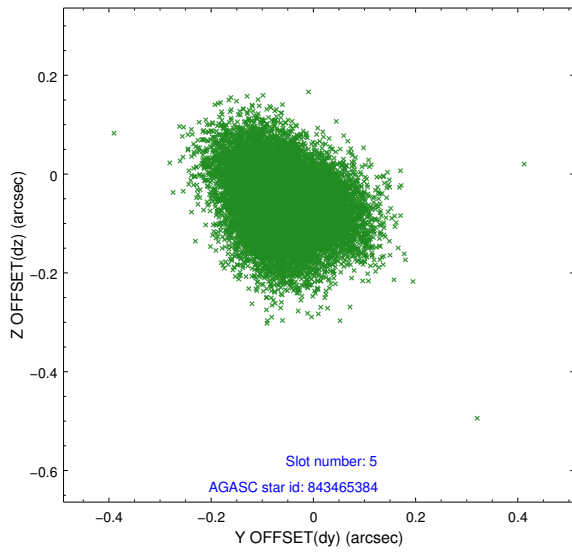
2.4.1 Slot 3



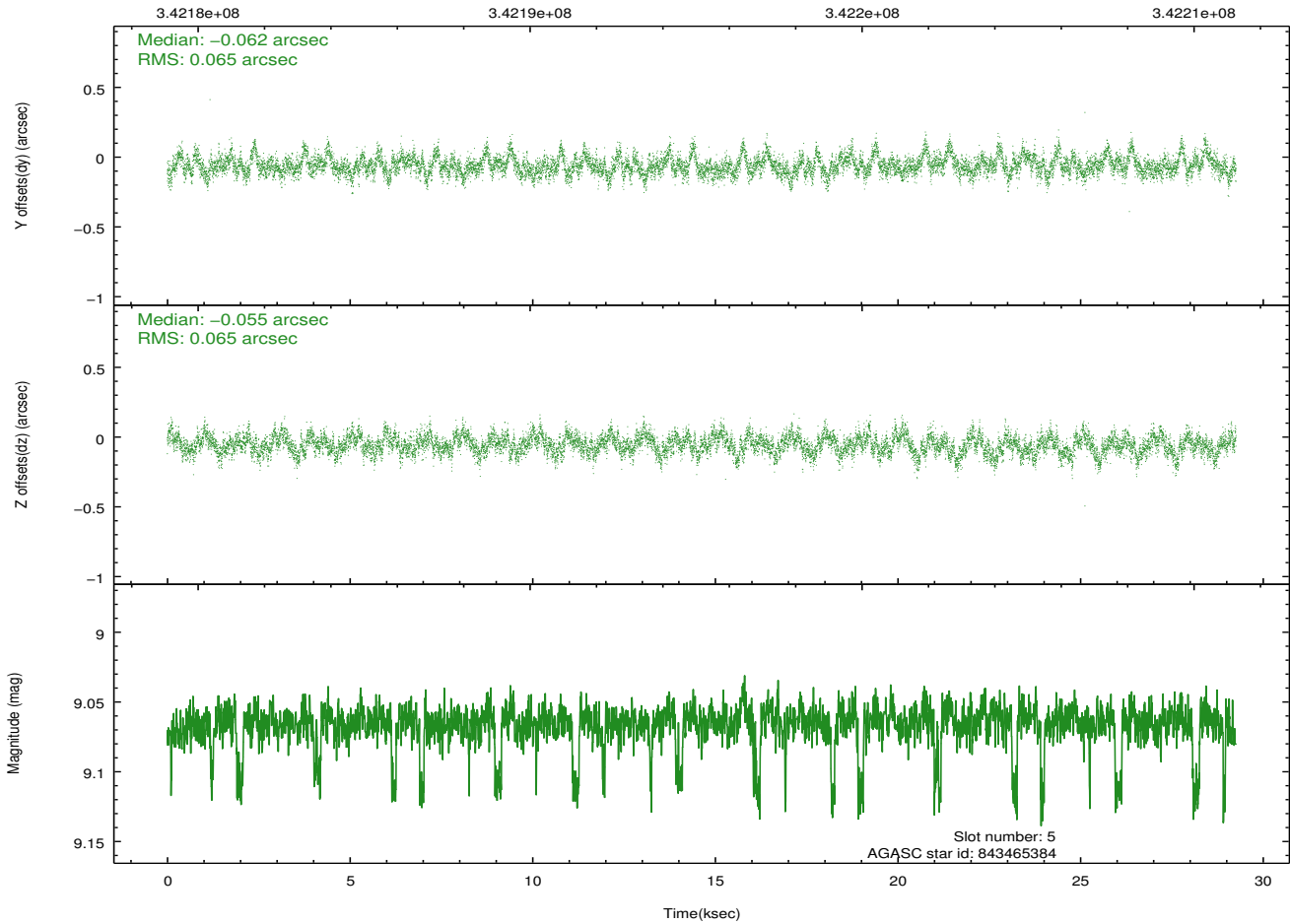
2.4.2 Slot 4



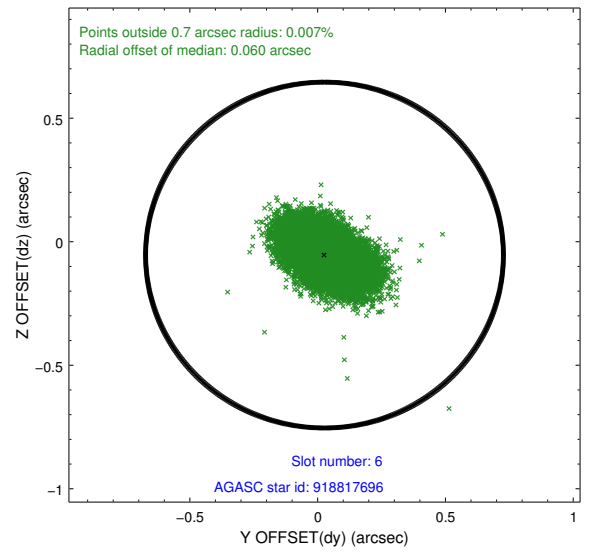
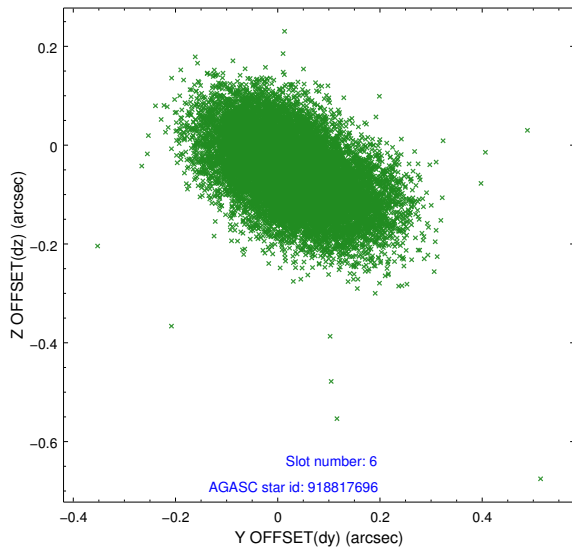
2.4.3 Slot 5



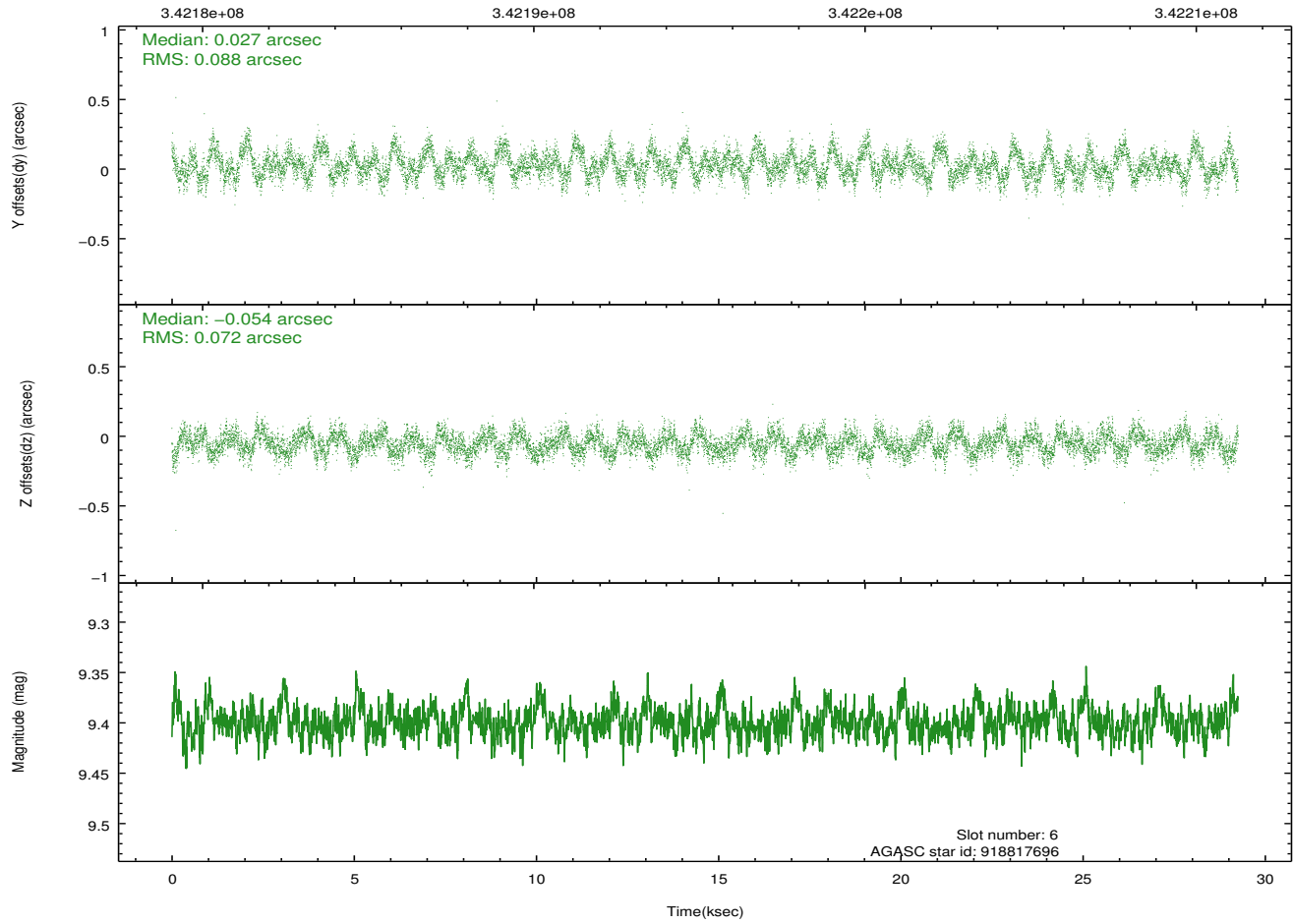
Time (s)



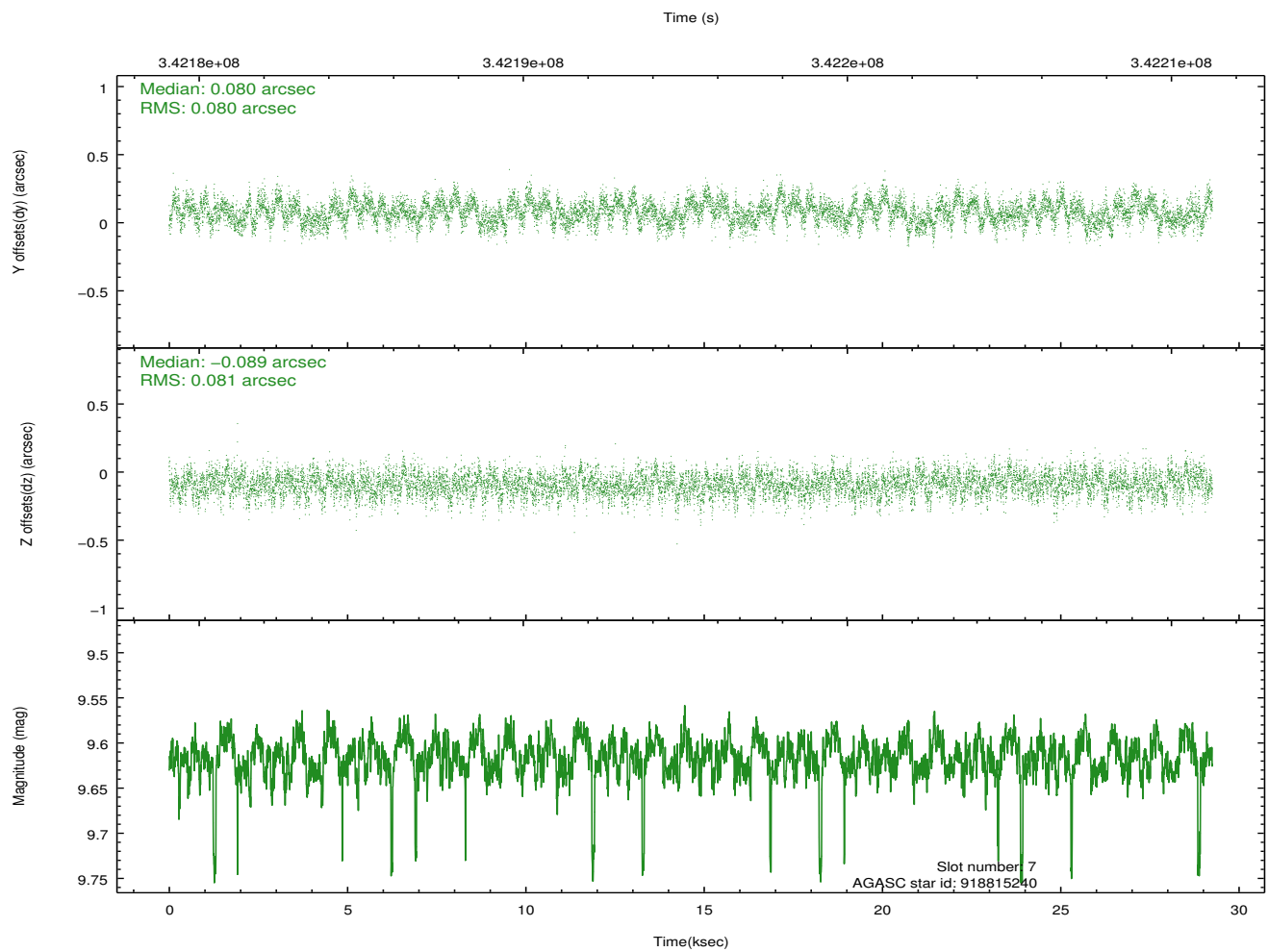
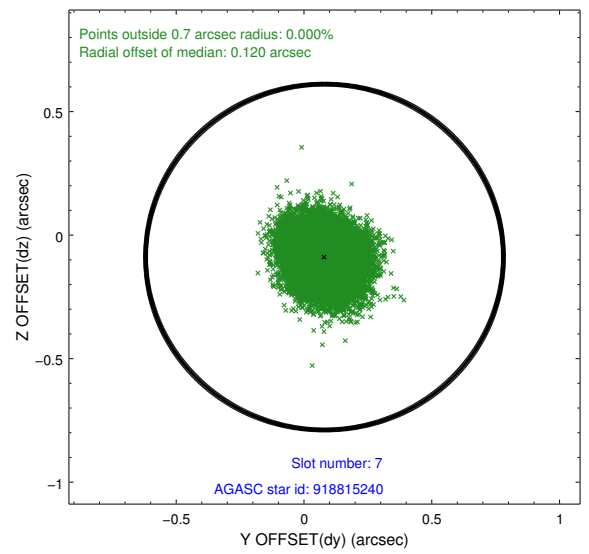
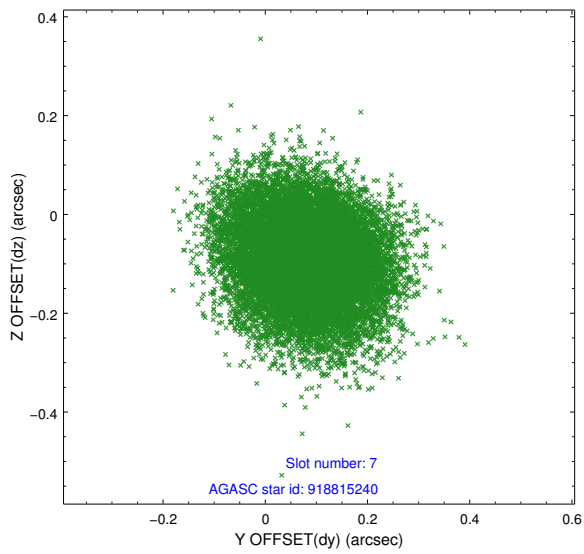
2.4.4 Slot 6



Time (s)

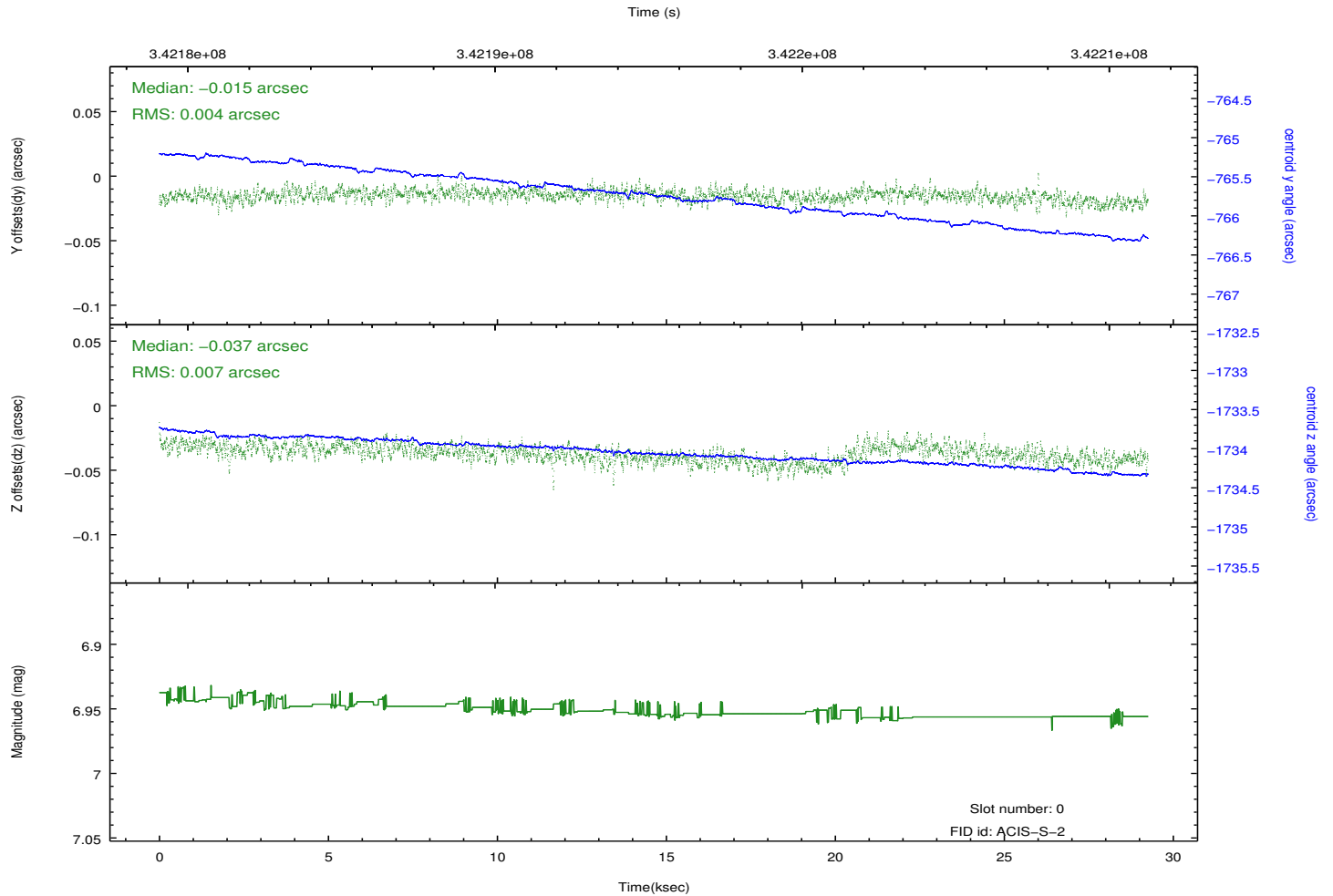
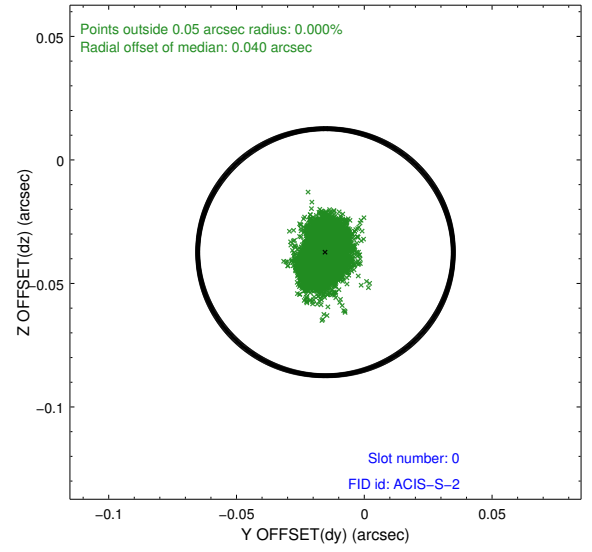
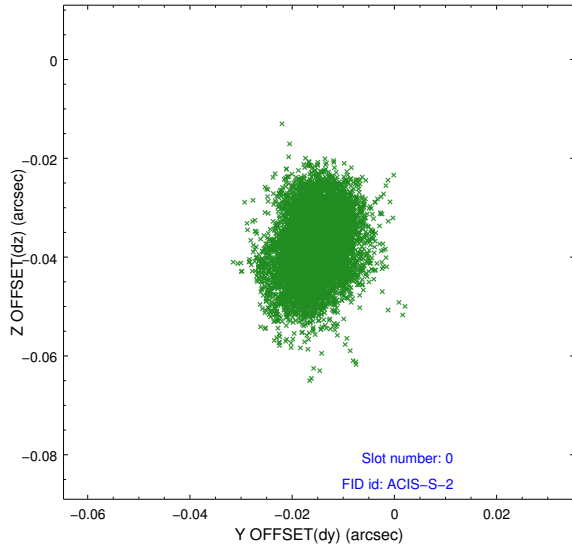


2.4.5 Slot 7

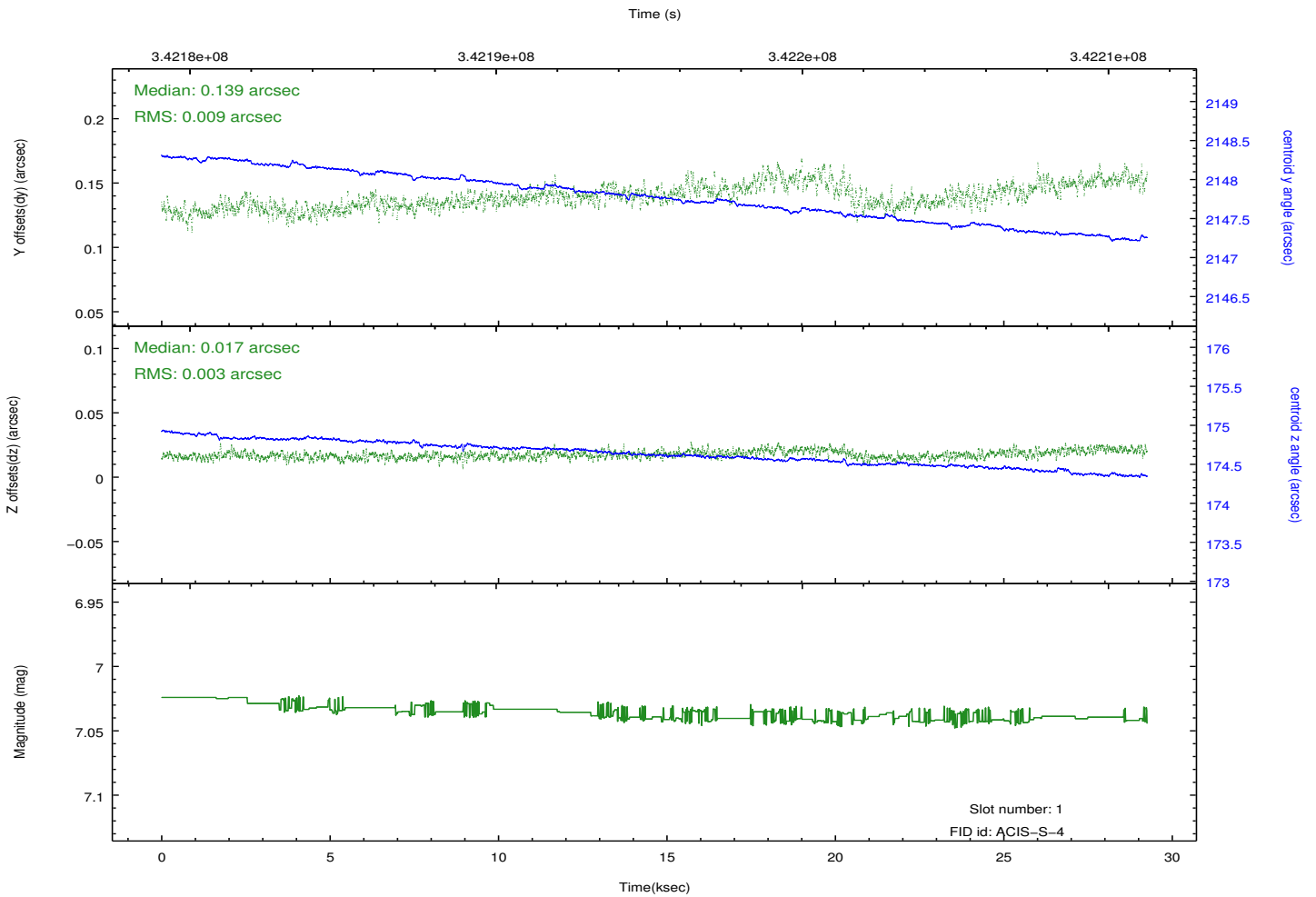
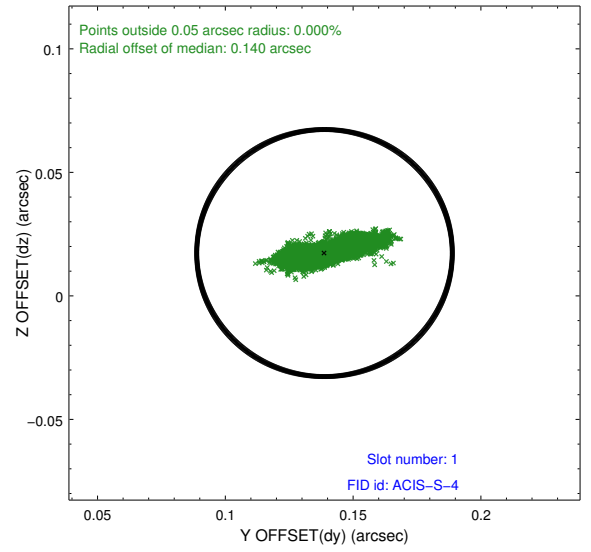
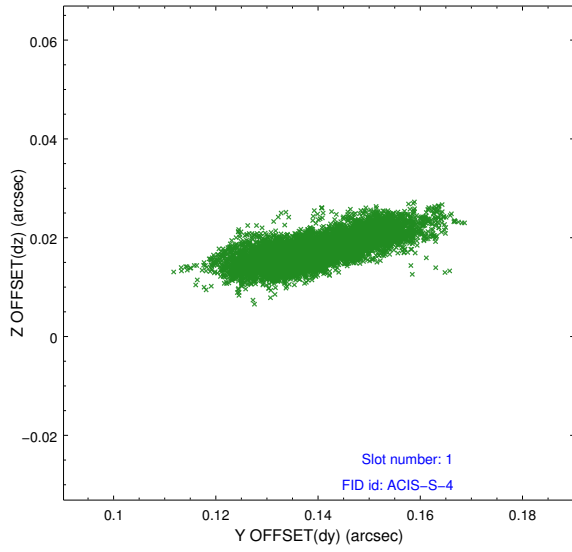


2.5 FID Slots

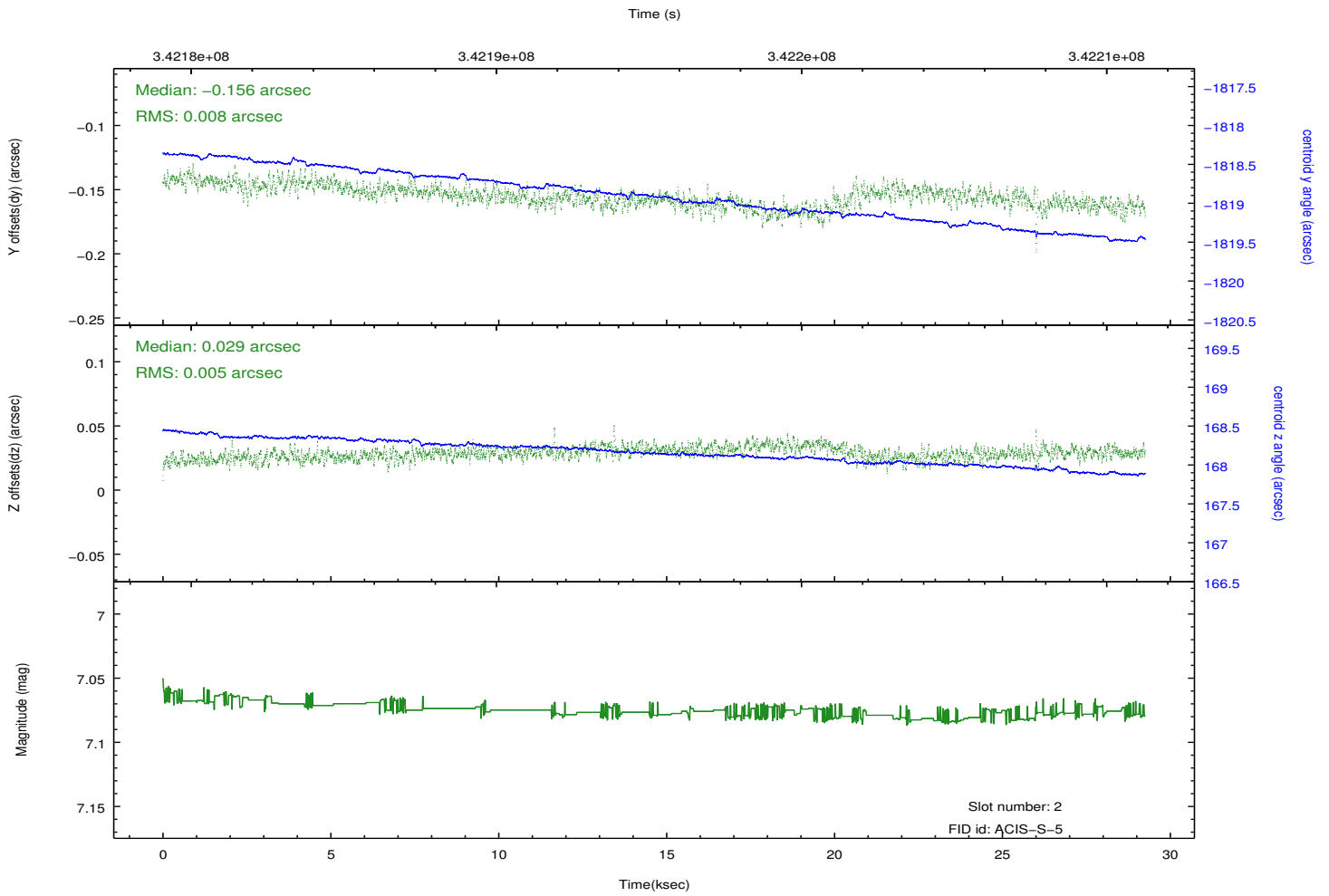
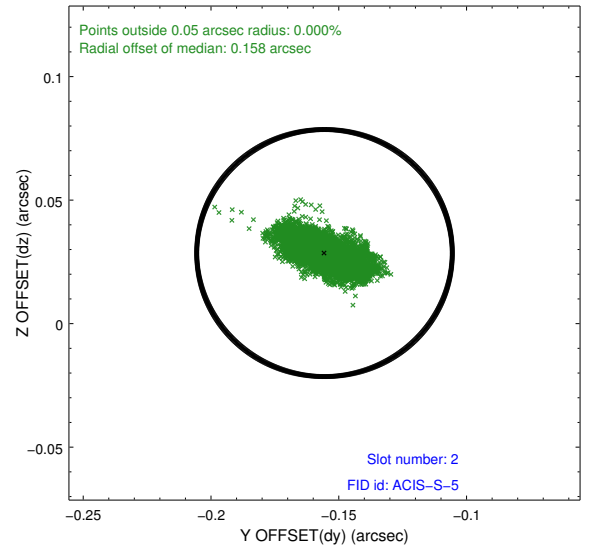
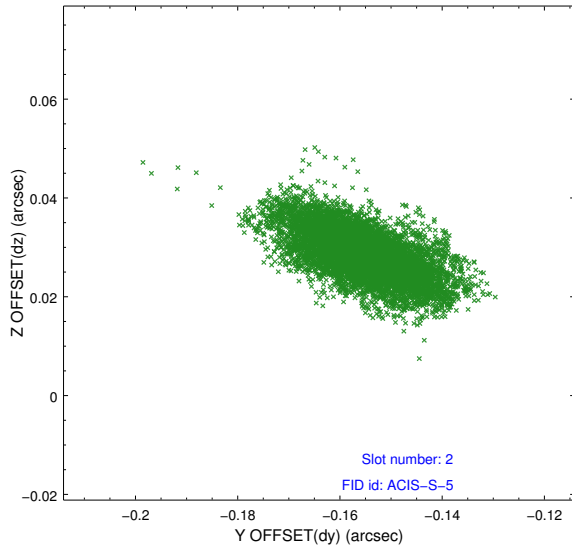
2.5.1 Slot 0



2.5.2 Slot 1



2.5.3 Slot 2



A Summary

A.1 Status

V&V Scientist	Jen Lauer
V&V Date (YYYY-MM-DD)	2012.05.31
V&V Edition	1
V&V Disposition and Status	OK
V&V Charge Time	28.5355002

A.2 Comments

Joint Proposal: HST