

V&V Reference Report

L2 ASCDS Version : 8.4.5

Observation 11060 - L2 Version 2
Chandra X-Ray Center

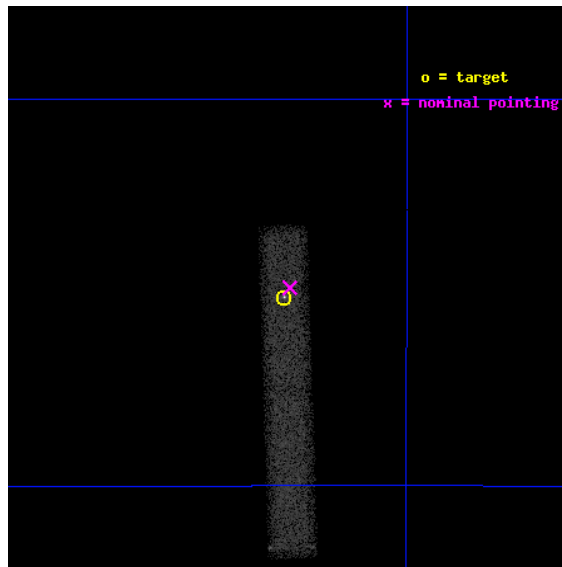
L2 Processing Date : Jul 5 2012

Contents

1	Front	2
2	OBI	3
2.1	OBI	3
2.1.1	Images	3
2.1.2	Bias	3
2.1.3	Parameters	4
2.1.4	Events	4
2.2	Compared Parameters	5
2.3	Aspect	6
2.4	Star Slots	9
2.4.1	Slot 3	9
2.4.2	Slot 4	10
2.4.3	Slot 5	11
2.4.4	Slot 6	12
2.4.5	Slot 7	13
2.5	FID Slots	14
2.5.1	Slot 0	14
2.5.2	Slot 1	15
2.5.3	Slot 2	16
A	Summary	17
A.1	Status	17
A.2	Comments	17

1 Front

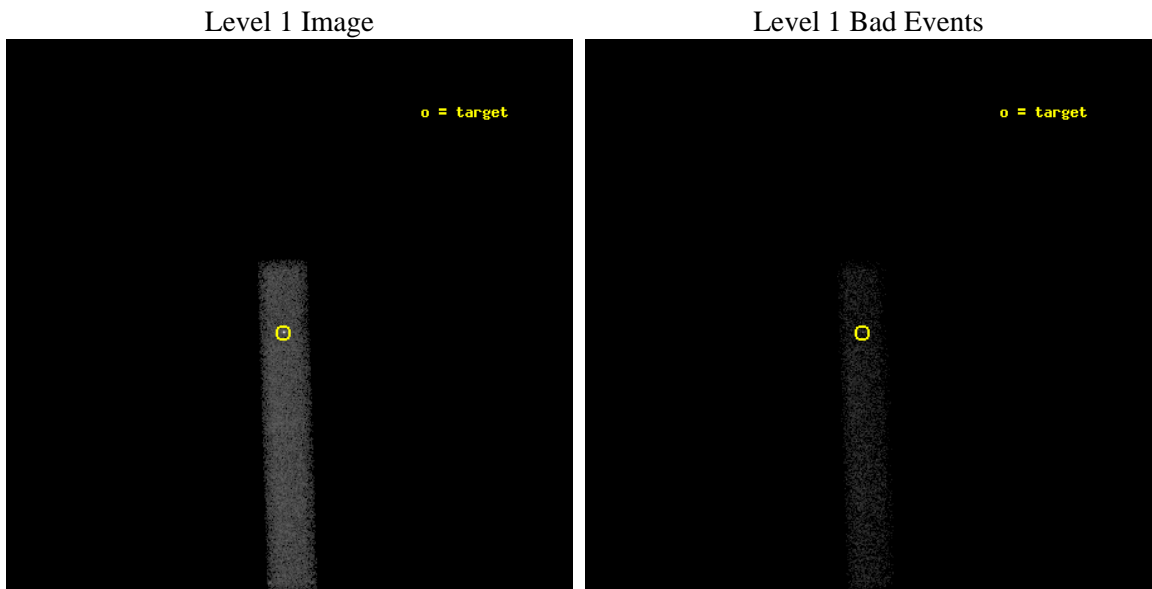
seq_num	401095	Sequence number
obs_id	11060	Observation id
title	Crustal cooling of the neutron star in EXO 0748-676	Proposal title
observer	Dr Nathalie Degenaar	Principal investigator
object	EXO 0748-676	Source name
dtycycle	0	
cycle	P	events from which exps? Prim/Second/Both
ra_targ	117.140833	Observer's specified target RA [deg]
dec_targ	-67.752389	Observer's specified target Dec [deg]
ra_nom	117.13451115967	Nominal RA [deg]
dec_nom	-67.748180082604	Nominal Dec [deg]
roll_nom	88.166963556962	Nominal Roll [deg]
revision	2	Processing version of data
ontime	30009.598211288	Sum of GTIs [s]
livetime	27217.121541165	Livetime [s]
ontime7	30009.598211288	Sum of GTIs [s]
l2events	21677	Number of level 2 events



2 OBI

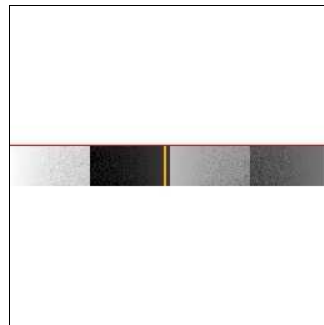
2.1 OBI

2.1.1 Images



2.1.2 Bias

Chip 7



2.1.3 Parameters

obi_num	1	Obi number	sched_exp_time	30000.000000	[s] Scheduled observation exposure time
ascdsver	8.4.5	Processing system revision	ontime	30009.598211288	Sum of GTIs [s]
caldbver	4.5.0	 	ontime7	30009.598211288	Sum of GTIs [s]
date	2012-07-05T06:49:45	Date and time of file creation	l1events	40826	Number of level 1 events
revision	2	Processing version of data			

2.1.4 Events

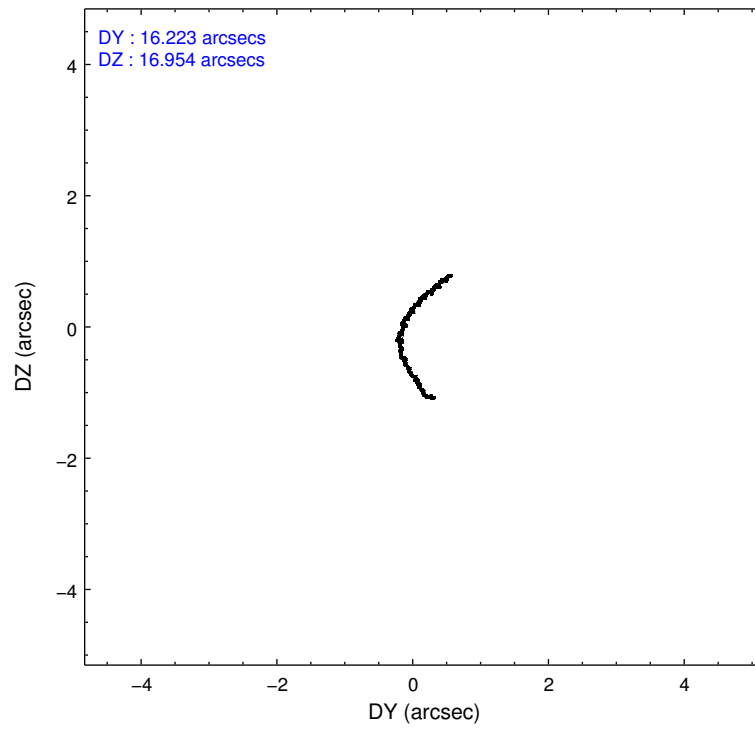
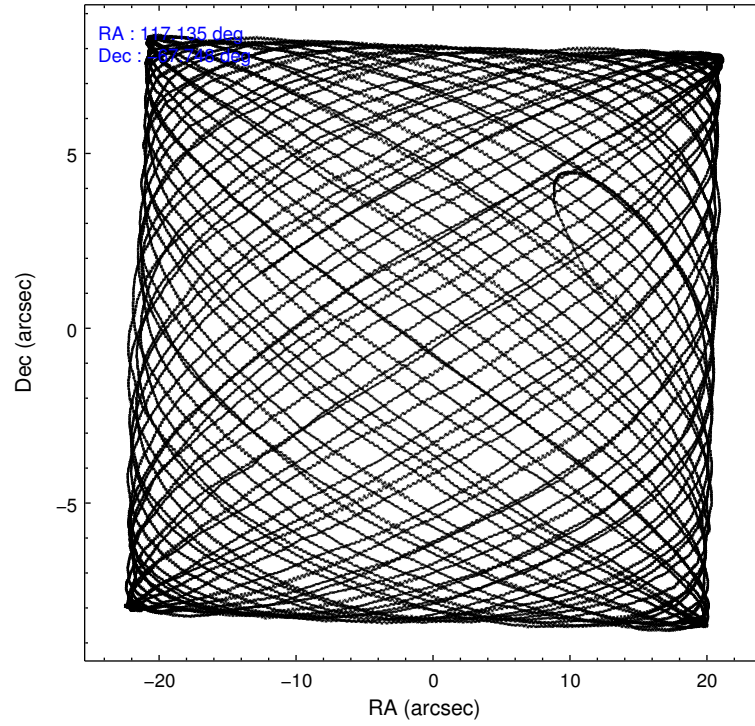
	ccd 7
level 1 events	40826
rejected events	18303
rejected %	44%

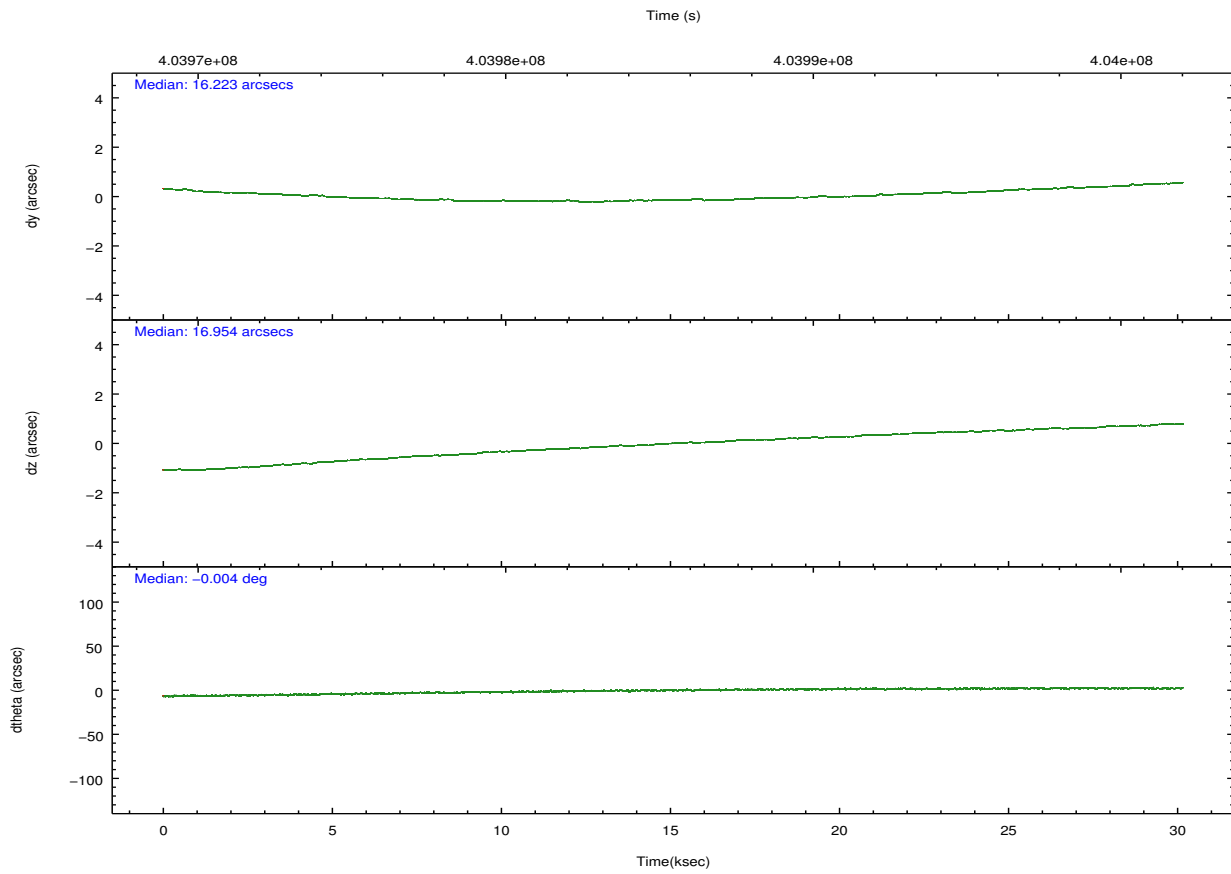
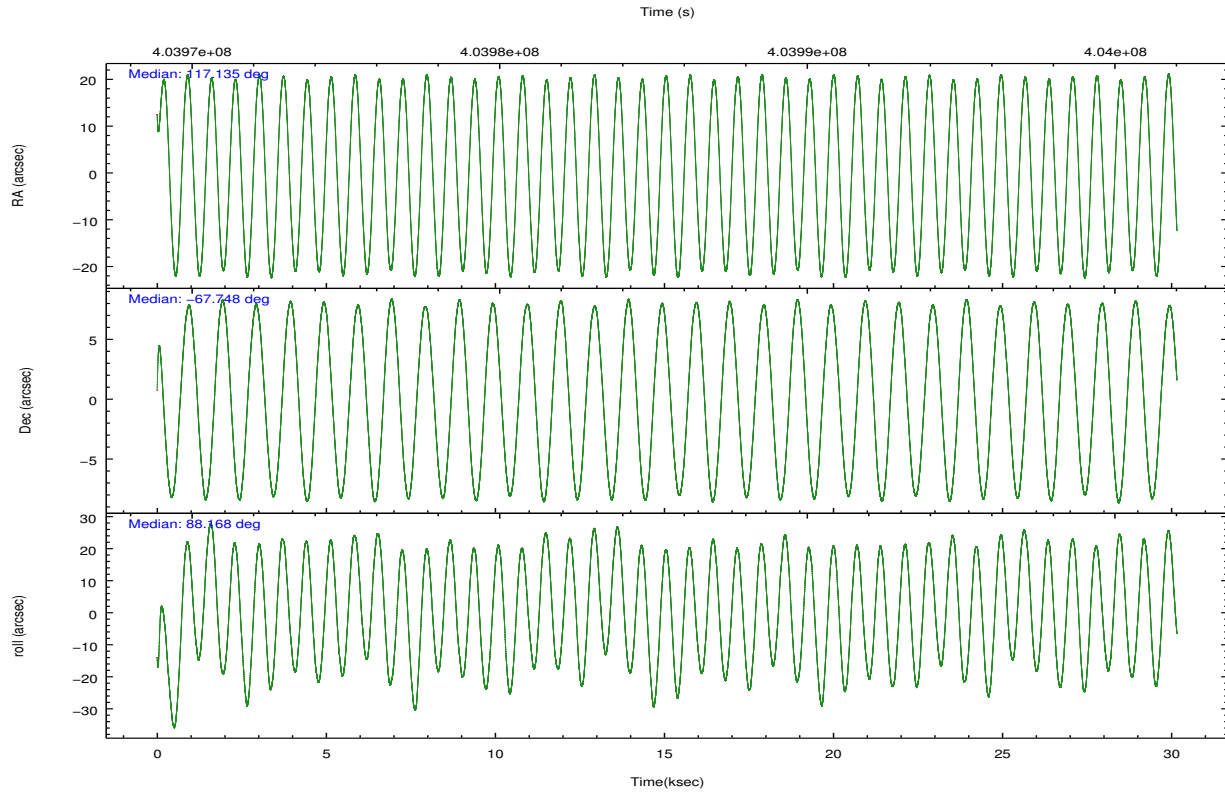
	ccd 7
grade 0 events	3063
	7%
grade 1 events	64
	0%
grade 2 events	4595
	11%
grade 3 events	3088
	7%
grade 4 events	2908
	7%
grade 5 events	3843
	9%
grade 6 events	8870
	21%
grade 7 events	14395
	35%

2.2 Compared Parameters

Parameter	Planned	Actual	Parameter	Planned	Actual
Instrument	ACIS	ACIS	Obspar format version number	7	7
Detector	ACIS-7	ACIS-7	Obspar file type	PREDICTED	ACTUAL
Grating	NONE	NONE	Obspar update status	NONE	UPDATED
Data mode	FAINT	FAINT	Number of optional ACIS chips dropped	0	0
Observation mode	POINTING	POINTING	On-chip summing requested	N	N
[deg] Pointing RA	117.169447	117.1345111596742	Subarray requested	CUSTOM	1/8
[deg] Pointing Dec	-67.772113	-67.74818008260418	Subarray start row	449	449
[deg] Pointing Roll	88.042683	88.16696355696234	Subarray row count	128	128
[mm] SIM focus pos	-0.684267	-0.6828225247311905	Alternating exposures requested	N	N
[mm] SIM defocus	0	0.001444936568705701	[s] Primary exposure time	0.000000	0.4
[mm] SIM translation stage pos	-190.132523	-190.1400660498719			
[mm] SIM translation stage offset	0	0.00754346686406393			
[s] Observation start time (MET)	403970526.184000	403969432.73754			
Observation start date	2010-10-20T14:01:00	2010-10-20T13:43:52			
[s] Observation end time (MET)	404000526.184000	404001599.28919			
Observation end date	2010-10-20T22:21:00	2010-10-20T22:39:59			
Read mode	TIMED	TIMED			

2.3 Aspect



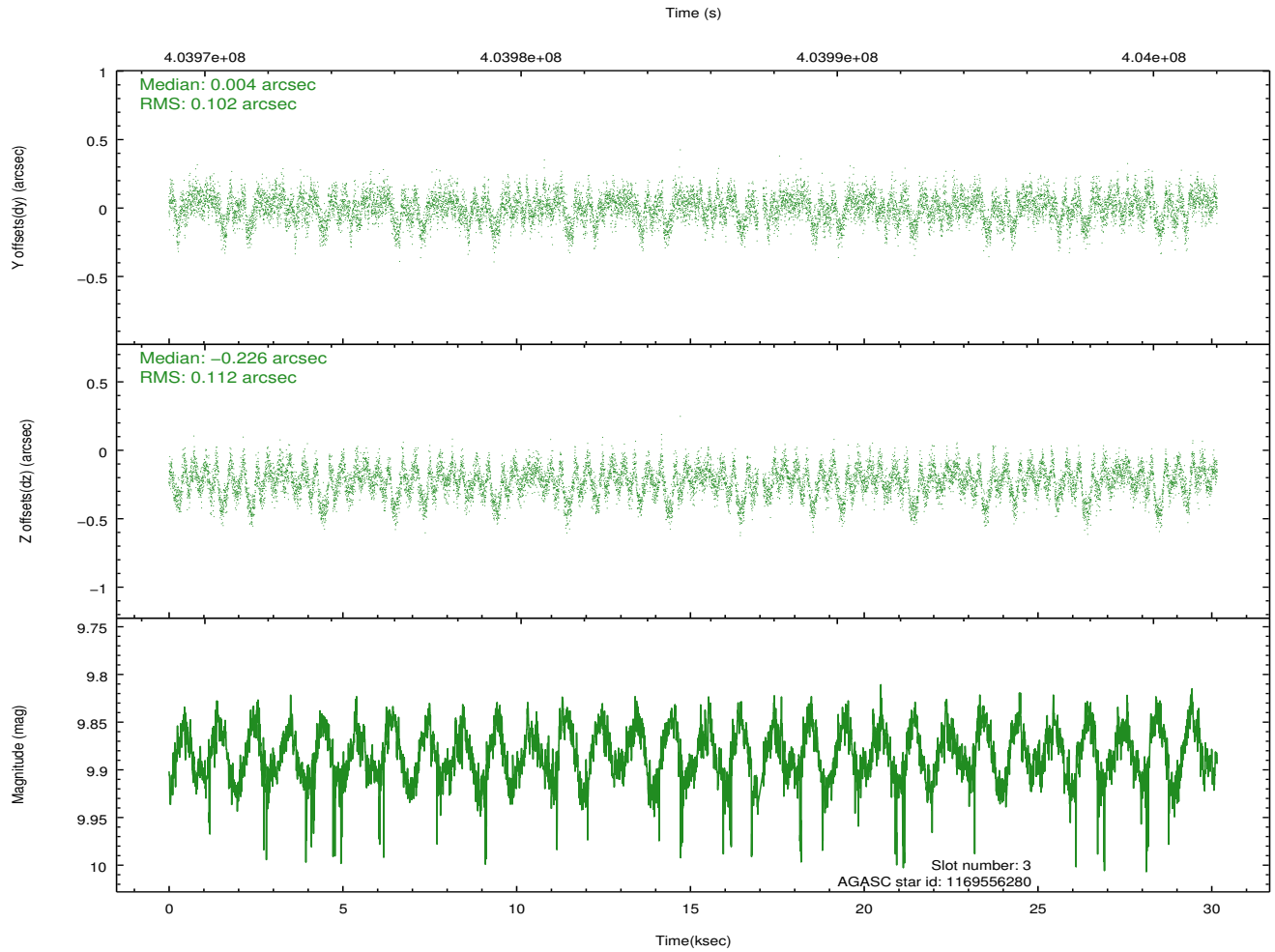
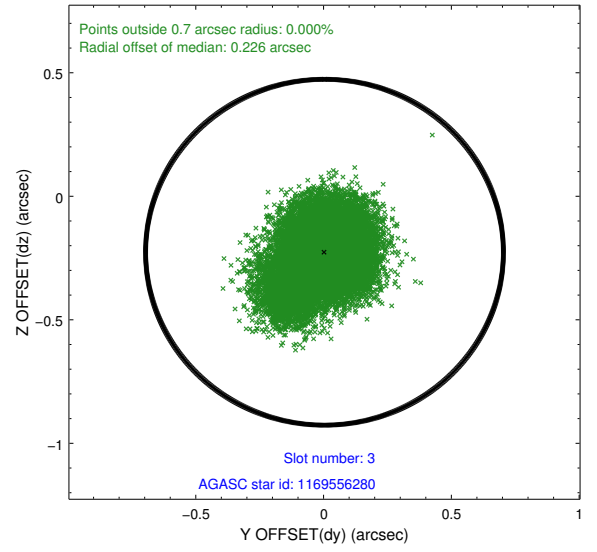
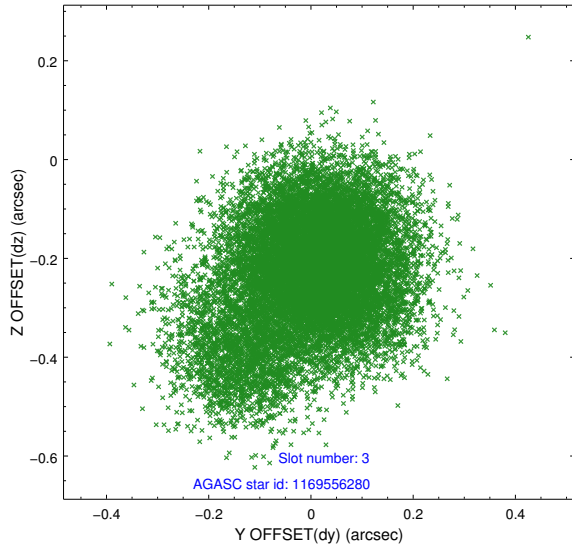


Slot Statistics

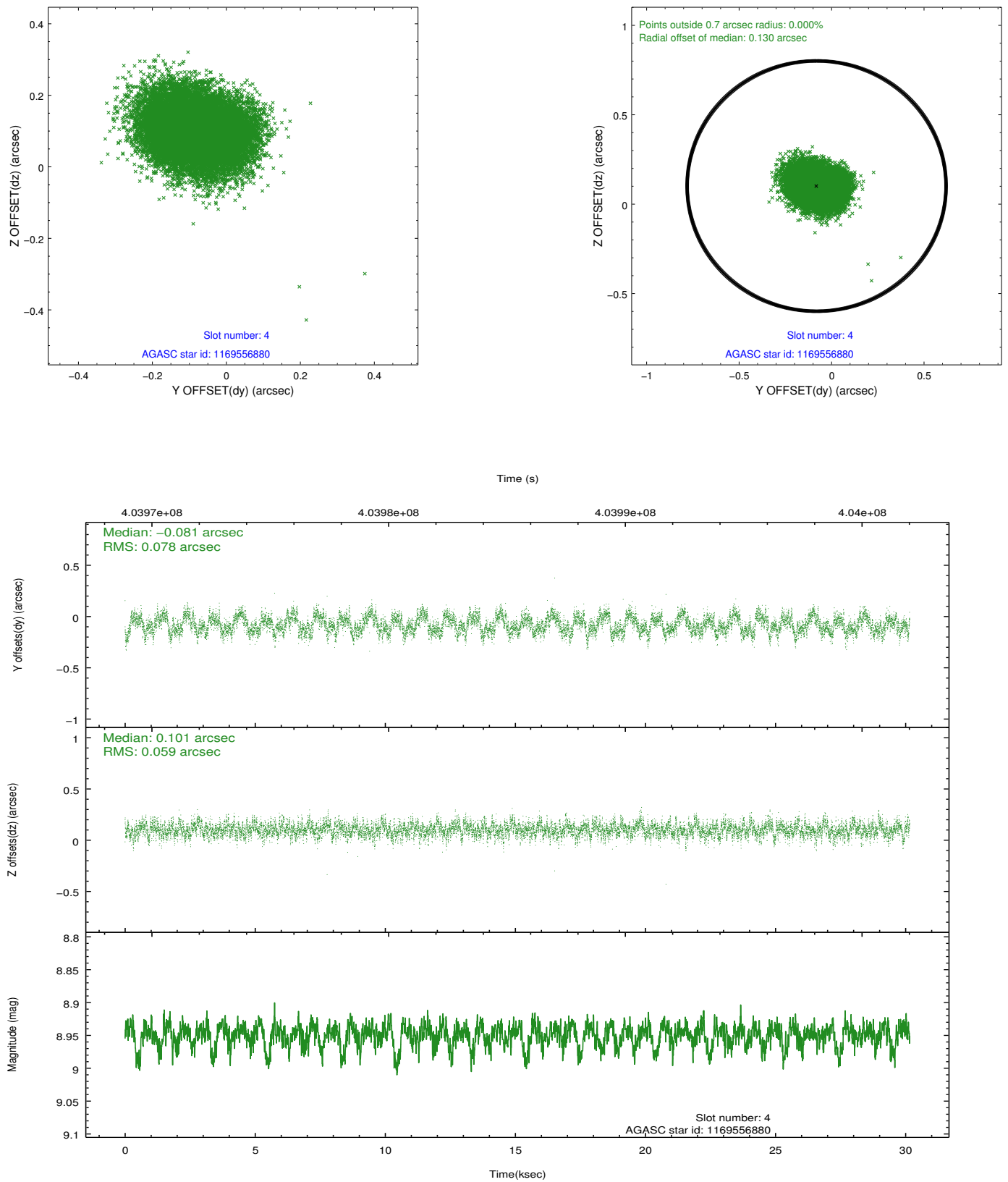
slot	status	id	mag	n_pts	med_dy	med_dz	dr1	dr2	ra	dec	mean_y	mean_z
0	FID	ACIS-S-4	6.98	7357	0.157	-0.006	0.011	0.020	0.000000	0.000000	2144.23	170.33
1	FID	ACIS-S-5	7.02	7357	-0.145	0.006	0.011	0.016	0.000000	0.000000	-1822.17	163.84
2	FID	ACIS-S-6	7.13	7356	-0.041	0.014	0.019	0.032	0.000000	0.000000	392.21	807.59
3	GUIDE	1169556280	9.88	14600	0.004	-0.226	0.159	0.269	116.863935	-67.303617	1670.94	482.14
4	GUIDE	1169556880	8.95	14709	-0.081	0.101	0.106	0.163	118.476472	-67.455164	1183.57	-1764.22
5	GUIDE	1203258824	9.88	14688	0.104	0.219	0.177	0.278	118.613315	-67.511932	981.50	-1955.08
6	GUIDE	1203248984	9.67	14697	-0.006	0.138	0.149	0.230	117.212023	-68.341440	-2045.76	-126.61
7	GUIDE	1203254680	10.35	14615	0.003	-0.211	0.282	0.423	116.349875	-68.129645	-1330.84	1054.46

2.4 Star Slots

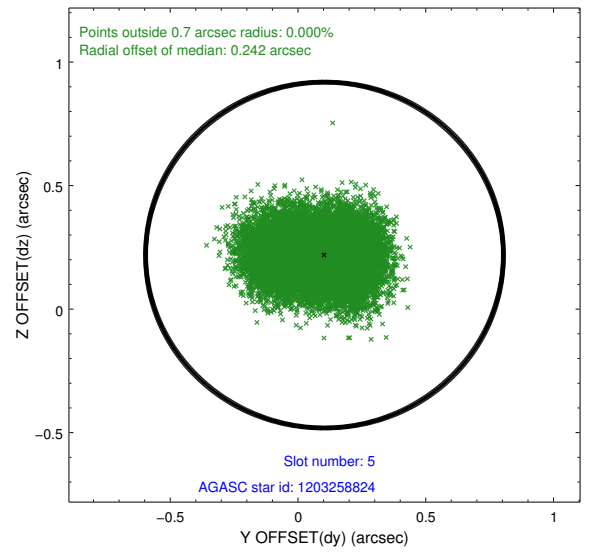
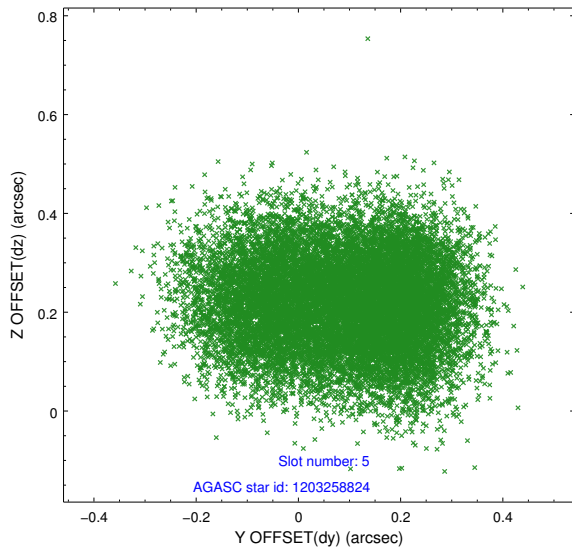
2.4.1 Slot 3



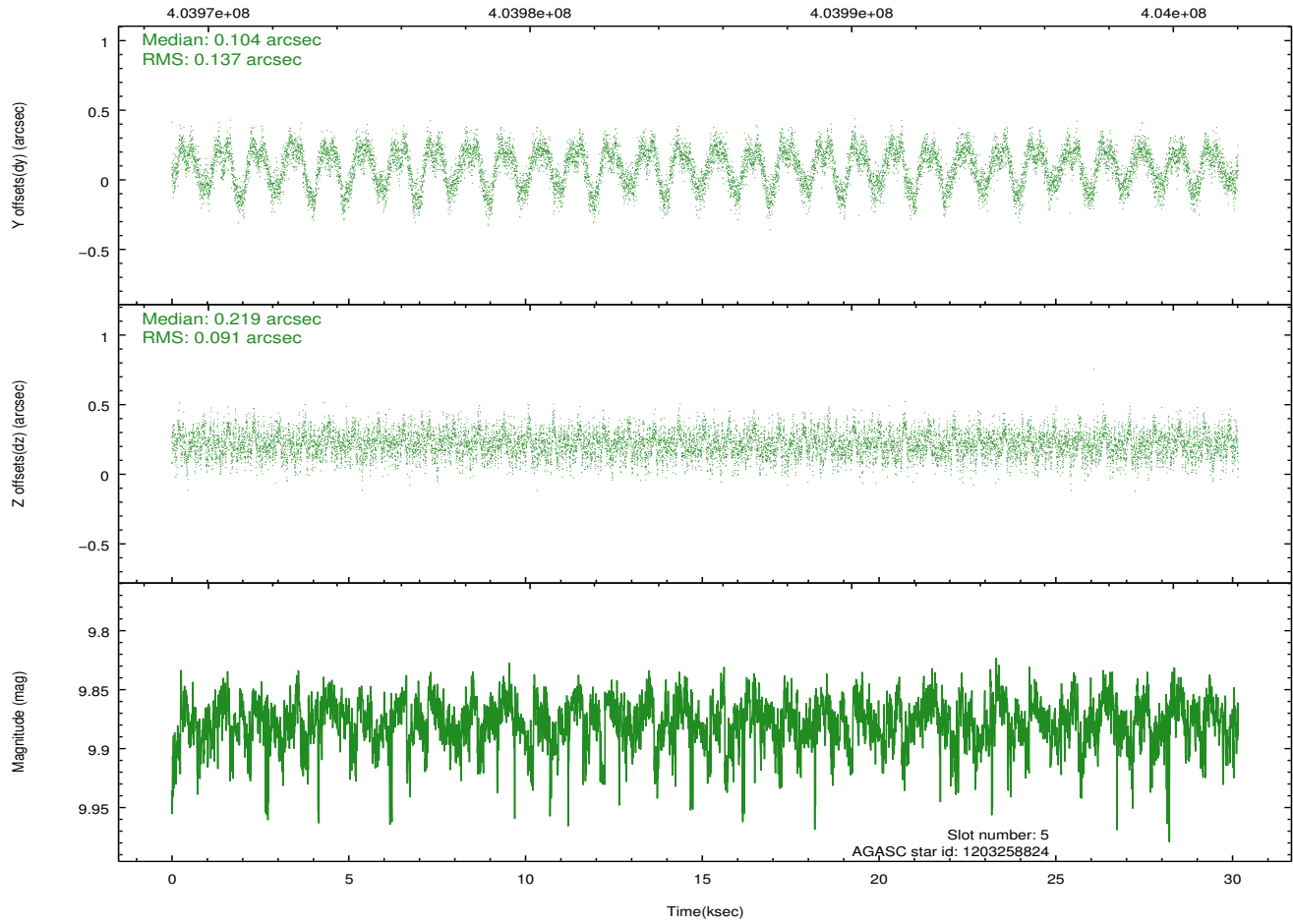
2.4.2 Slot 4



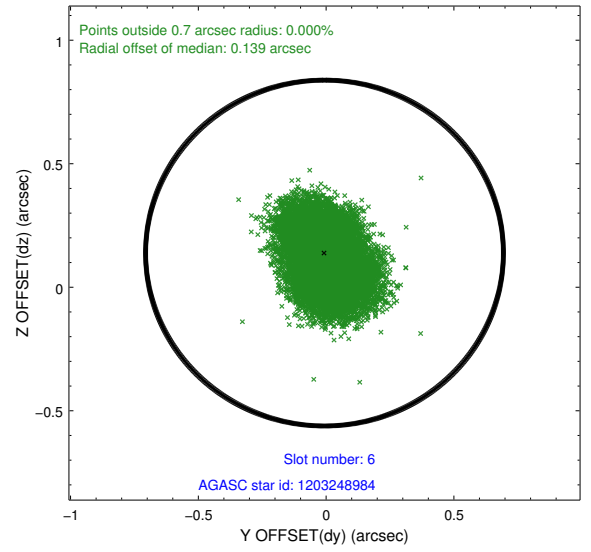
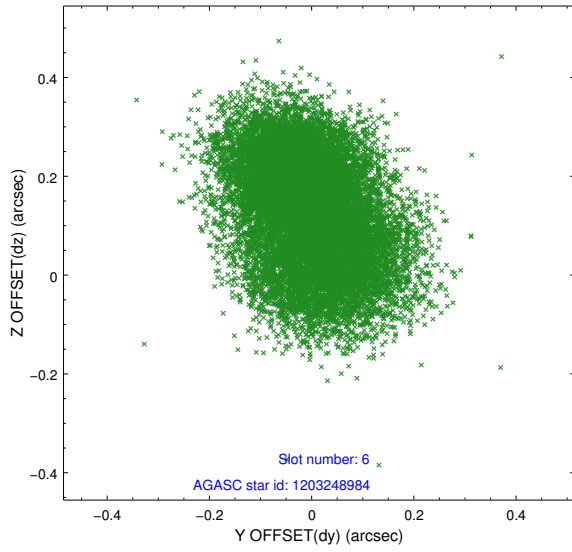
2.4.3 Slot 5



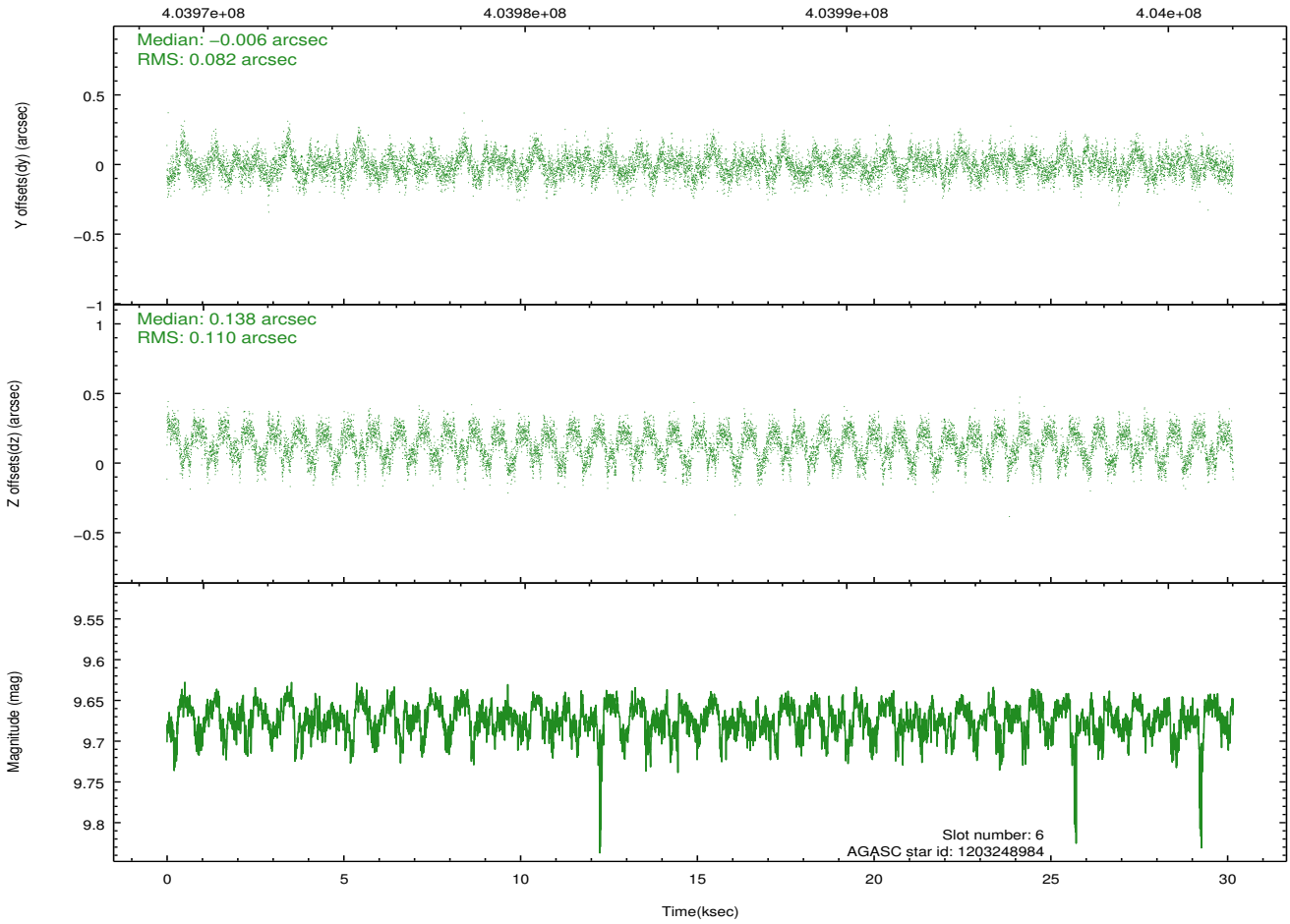
Time (s)



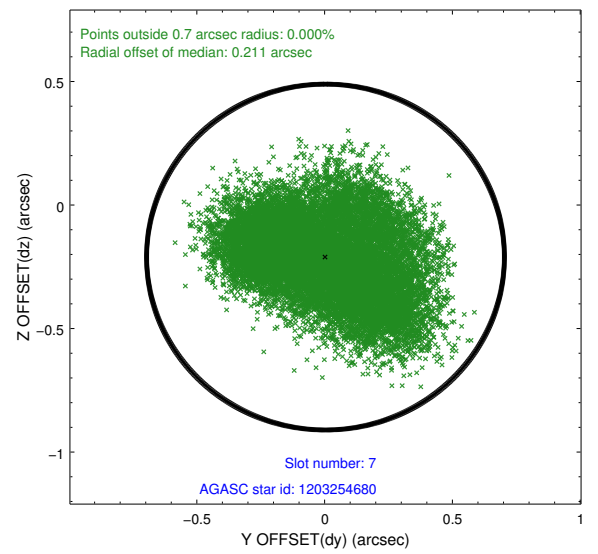
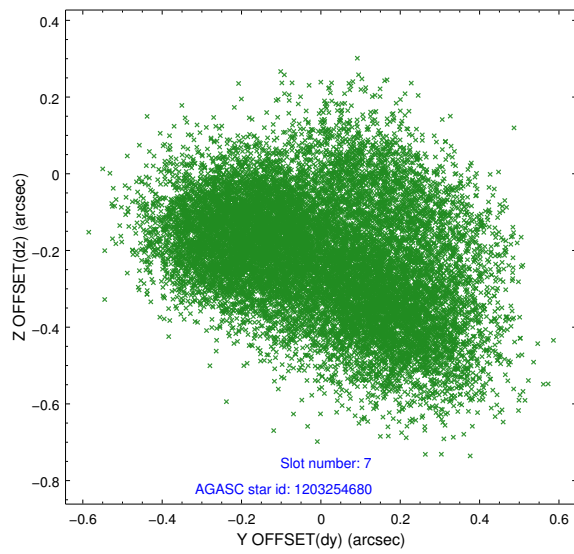
2.4.4 Slot 6



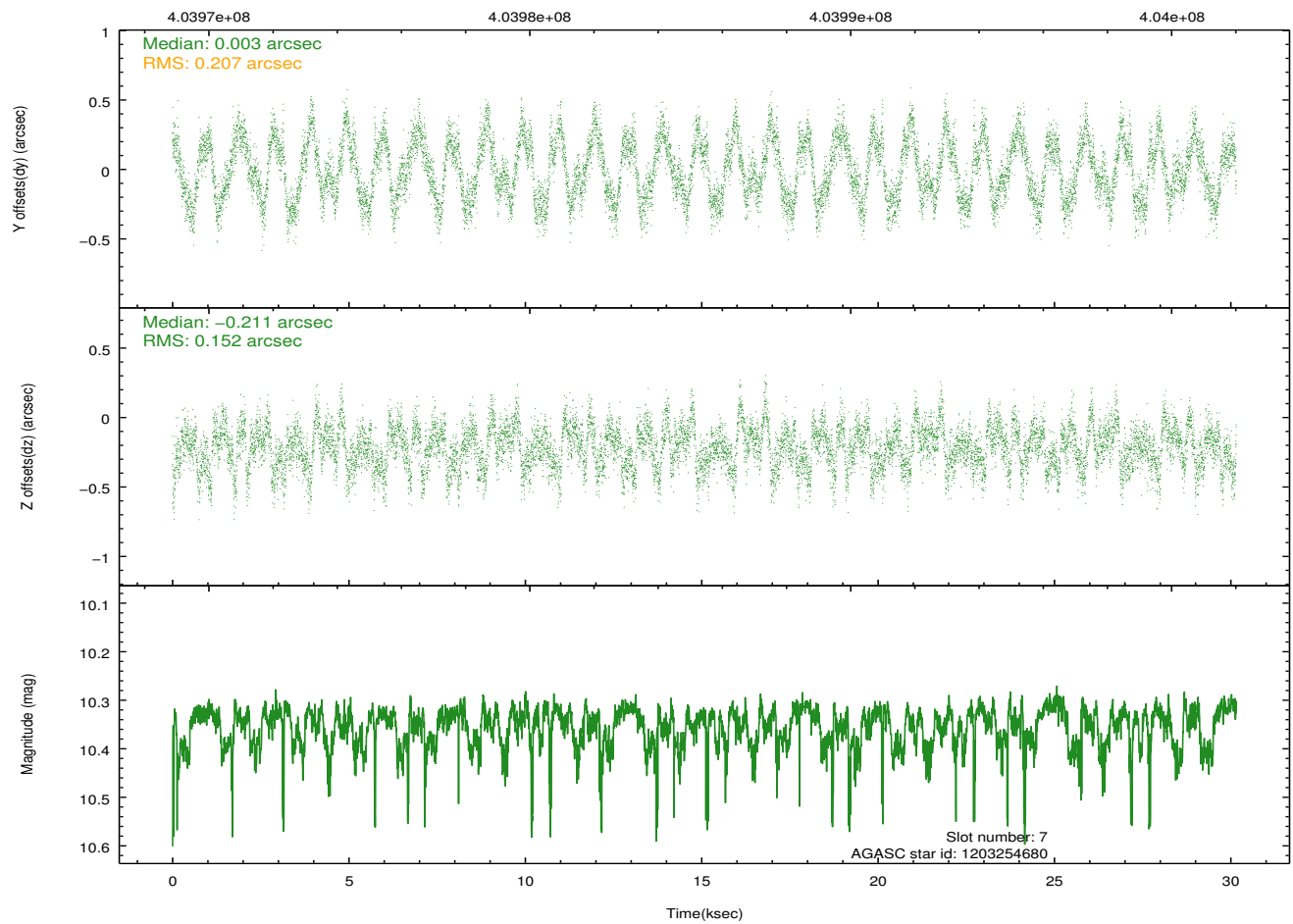
Time (s)



2.4.5 Slot 7

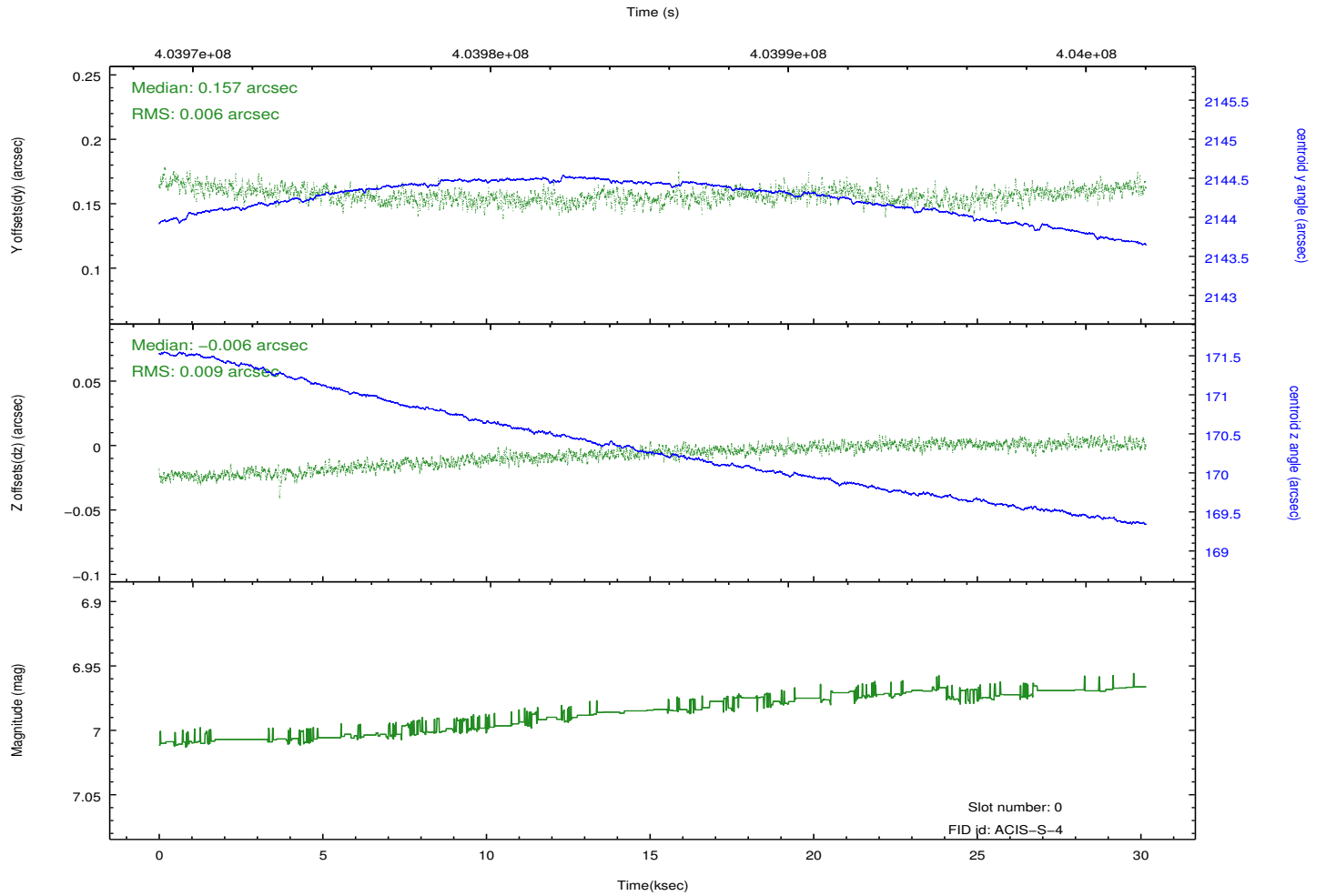
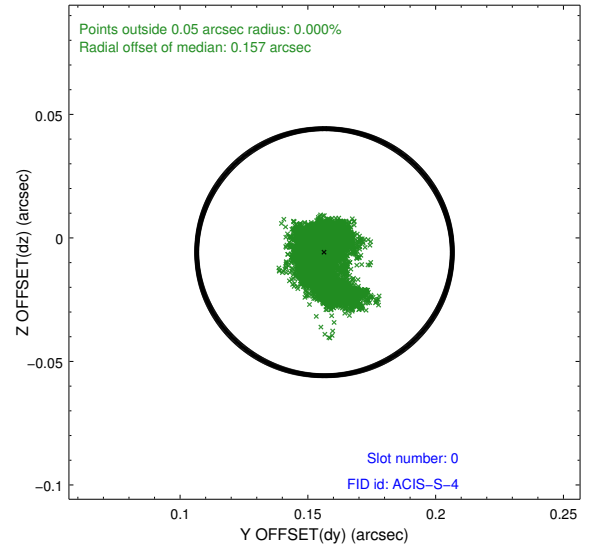
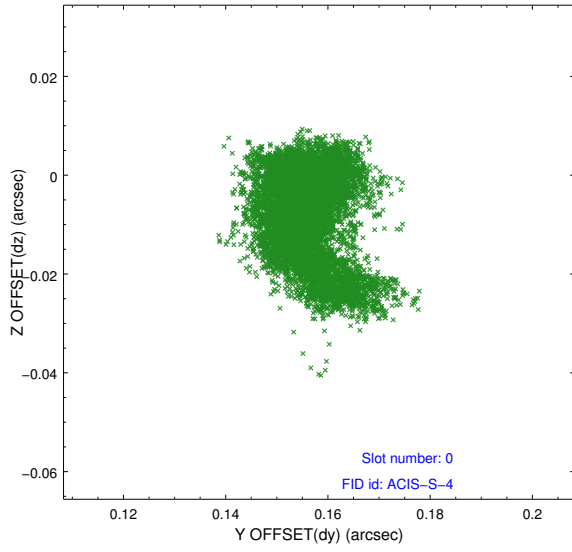


Time (s)

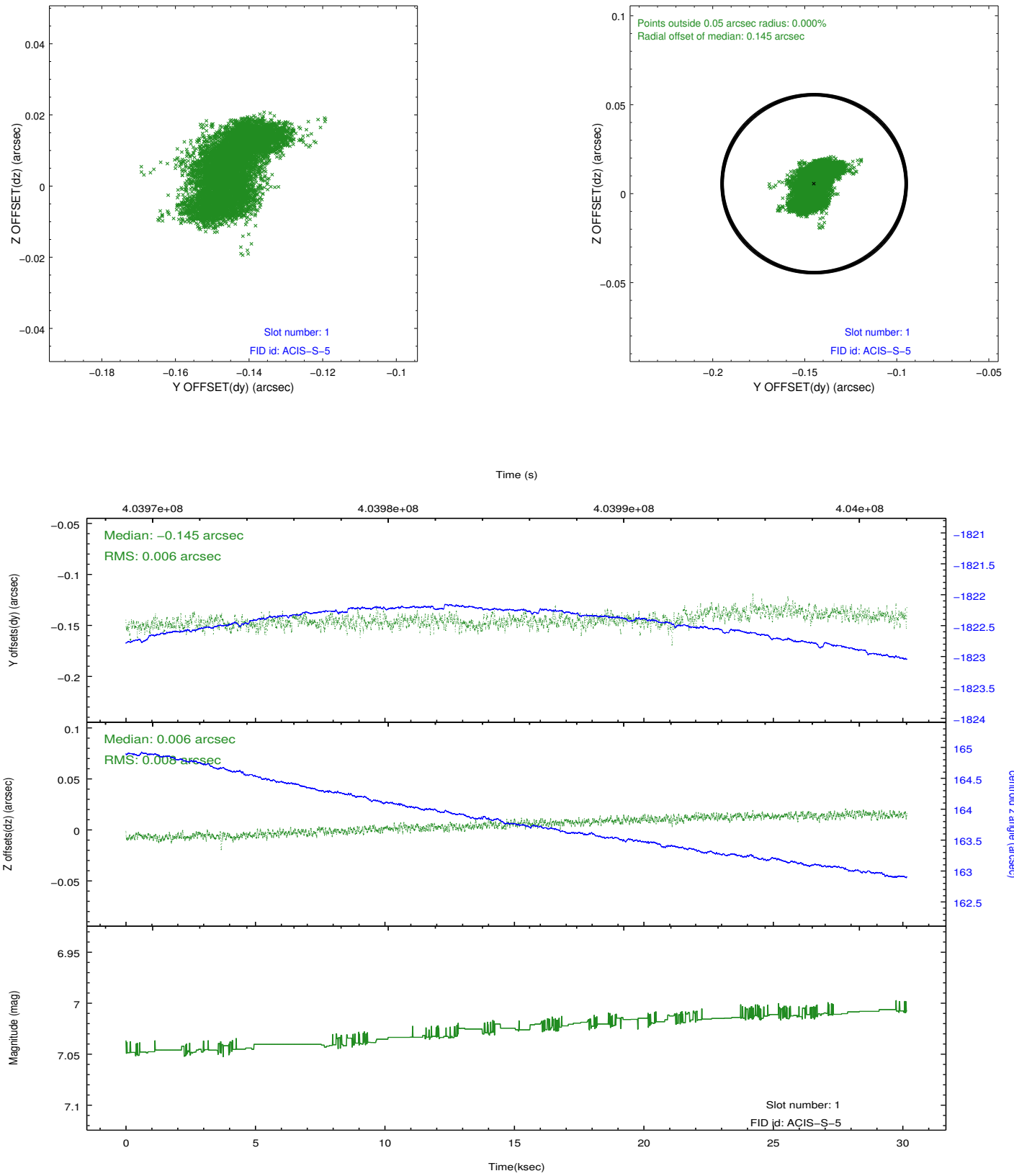


2.5 FID Slots

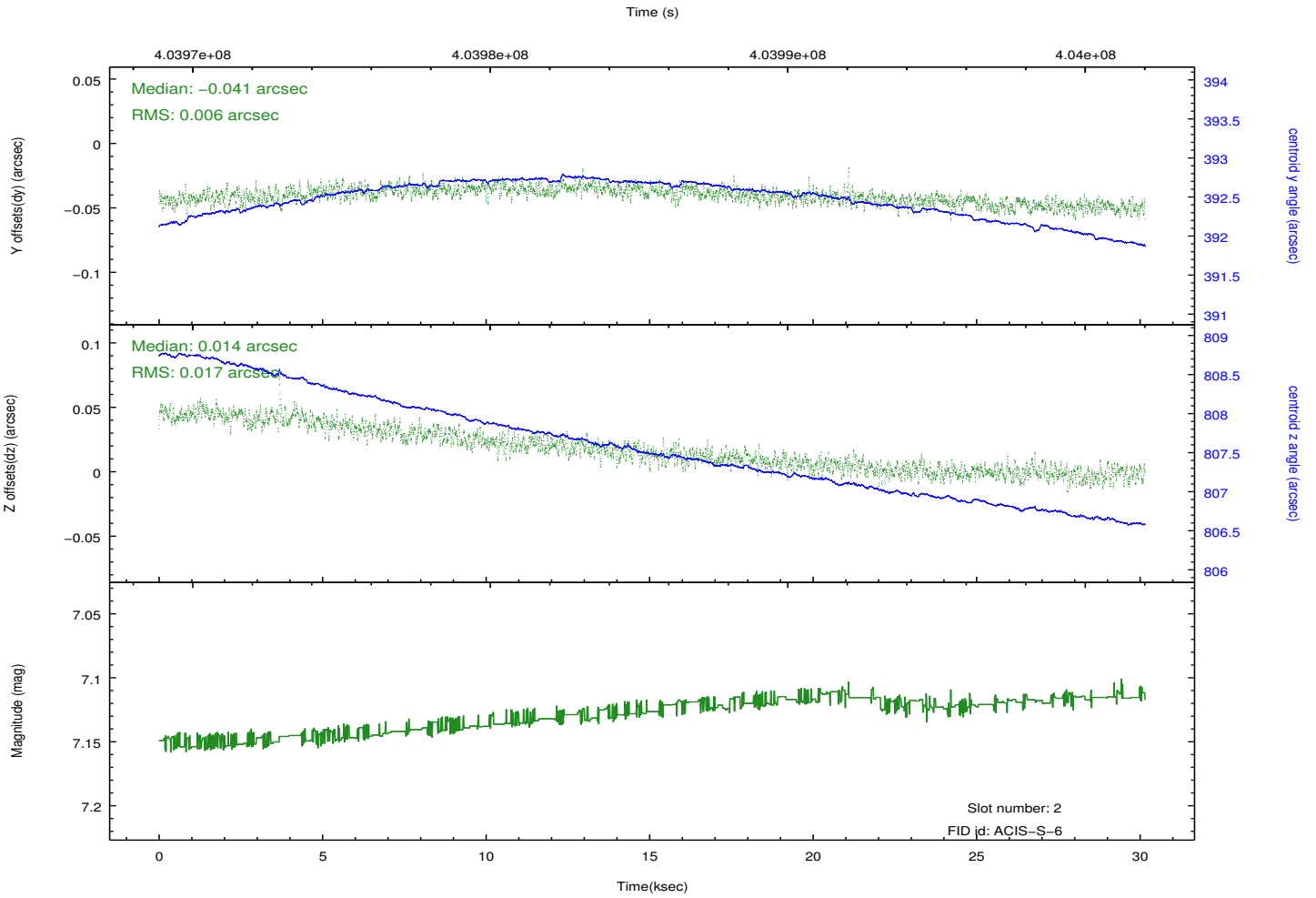
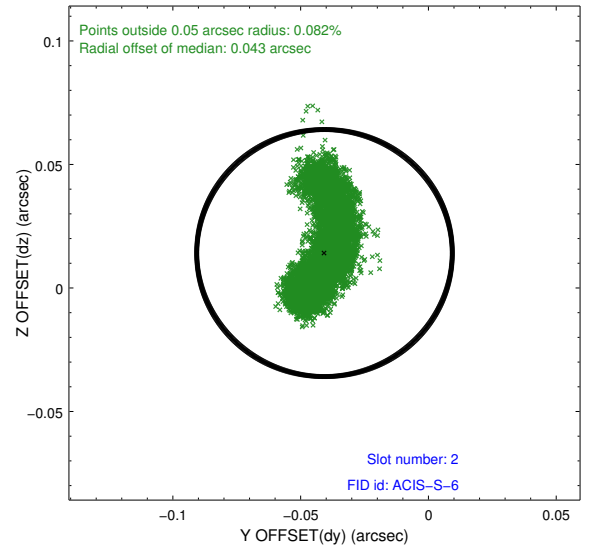
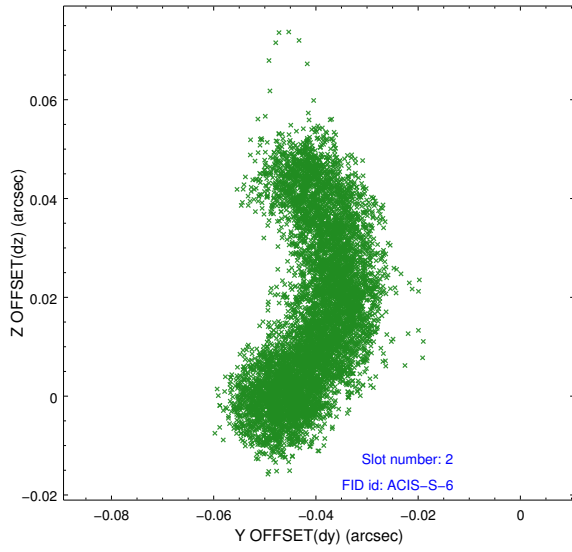
2.5.1 Slot 0



2.5.2 Slot 1



2.5.3 Slot 2



A Summary

A.1 Status

V&V Scientist	Beth Sundheim
V&V Date (YYYY-MM-DD)	2012.07.13
V&V Edition	1
V&V Disposition and Status	OK
V&V Charge Time	30.009598211288

A.2 Comments