

V&V Reference Report

L2 ASCDS Version : 8.4.5

Observation 11320 - L2 Version 2
Chandra X-Ray Center

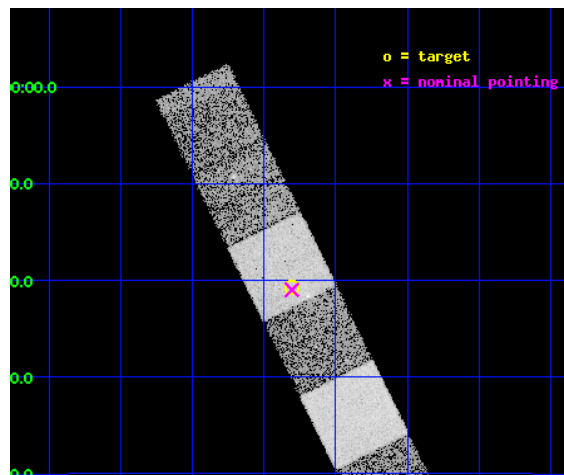
L2 Processing Date : Jun 30 2012

Contents

1	Front	2
2	OBI	3
2.1	OBI	3
2.1.1	Images	3
2.1.2	Bias	3
2.1.3	Parameters	4
2.1.4	Events	4
2.2	Compared Parameters	5
2.3	Aspect	6
2.4	Star Slots	9
2.4.1	Slot 3	9
2.4.2	Slot 4	10
2.4.3	Slot 5	11
2.4.4	Slot 6	12
2.4.5	Slot 7	13
2.5	FID Slots	14
2.5.1	Slot 0	14
2.5.2	Slot 1	15
2.5.3	Slot 2	16
A	Summary	17
A.1	Status	17
A.2	Comments	17

1 Front

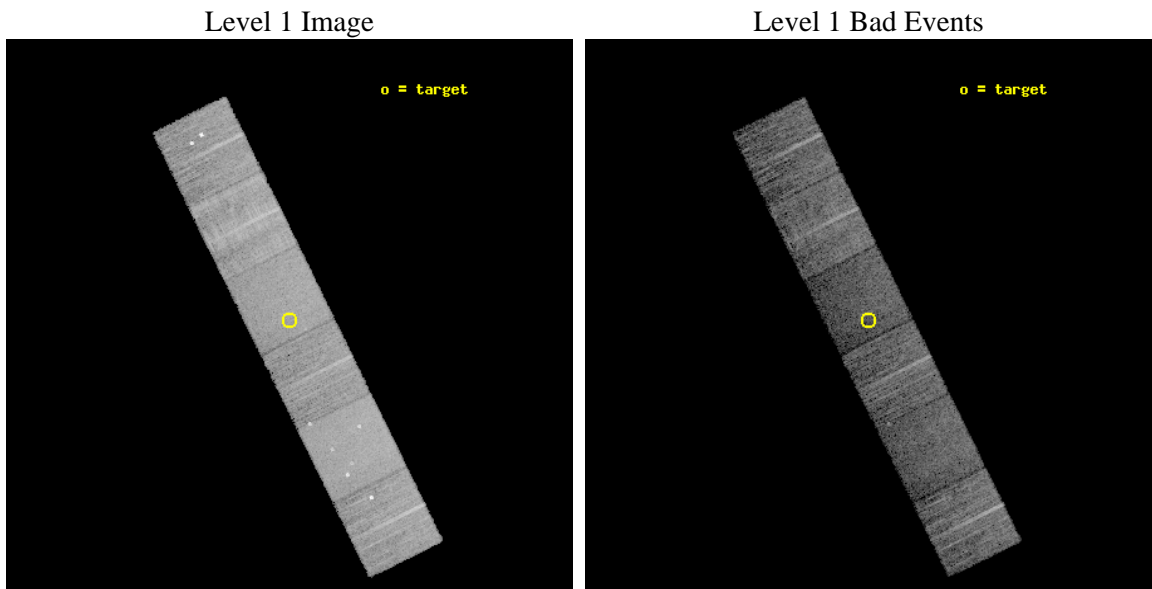
seq_num	600839	Sequence number
obs_id	11320	Observation id
title	Accretion onto nuclear black holes in early type galaxies: comparing field vs. clusters	Proposal title
observer	Elena Gallo	Principal investigator
object	PGC042173	Source name
dtcycle	0	
cycle	P	events from which exps? Prim/Second/Both
ra_targ	189.451	Observer's specified target RA [deg]
dec_targ	-1.34482	Observer's specified target Dec [deg]
ra_nom	189.45144693758	Nominal RA [deg]
dec_nom	-1.3497193397026	Nominal Dec [deg]
roll_nom	243.65663020712	Nominal Roll [deg]
revision	2	Processing version of data
ontime	7955.1999704242	Sum of GTIs [s]
livetime	7854.4664383523	Livetime [s]
ontime4	7955.1999704242	Sum of GTIs [s]
ontime5	7955.1999704242	Sum of GTIs [s]
ontime6	7955.1999704242	Sum of GTIs [s]
ontime7	7955.1999704242	Sum of GTIs [s]
ontime8	7948.7180595994	Sum of GTIs [s]
ontime9	7955.1999704242	Sum of GTIs [s]
l2events	93308	Number of level 2 events



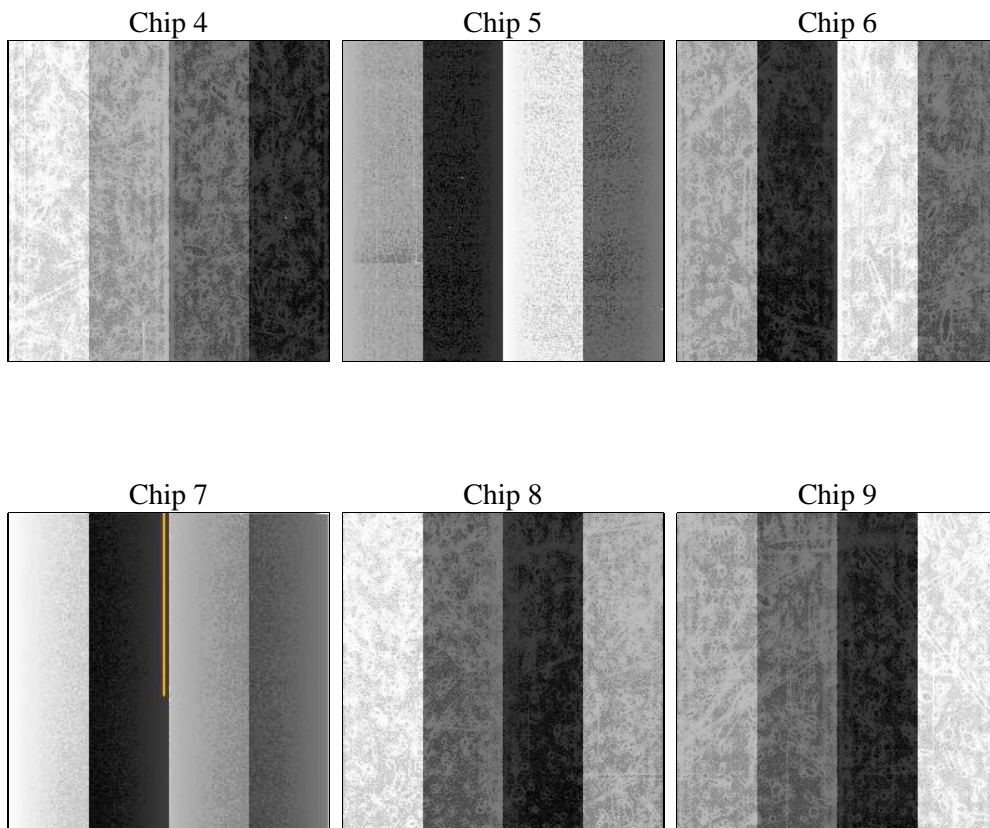
2 OBI

2.1 OBI

2.1.1 Images



2.1.2 Bias



2.1.3 Parameters

obi_num	0	Obi number	sched_exp_time	8200.000000	[s] Scheduled observation exposure time
ascdsver	8.4.5	Processing system revision	ontime	7955.1999704242	Sum of GTIs [s]
caldbver	4.5.0	 	ontime4	7955.1999704242	Sum of GTIs [s]
date	2012-07-01T02:38:03	Date and time of file creation	ontime5	7955.1999704242	Sum of GTIs [s]
revision	2	Processing version of data	ontime6	7955.1999704242	Sum of GTIs [s]
			ontime7	7955.1999704242	Sum of GTIs [s]
			ontime8	7948.7180595994	Sum of GTIs [s]
			ontime9	7955.1999704242	Sum of GTIs [s]
			l1events	417779	Number of level 1 events

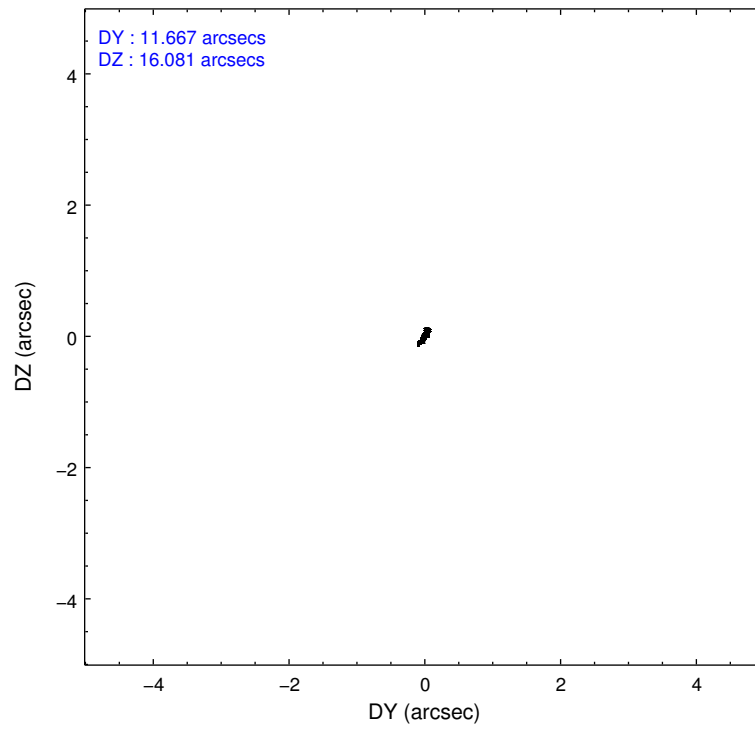
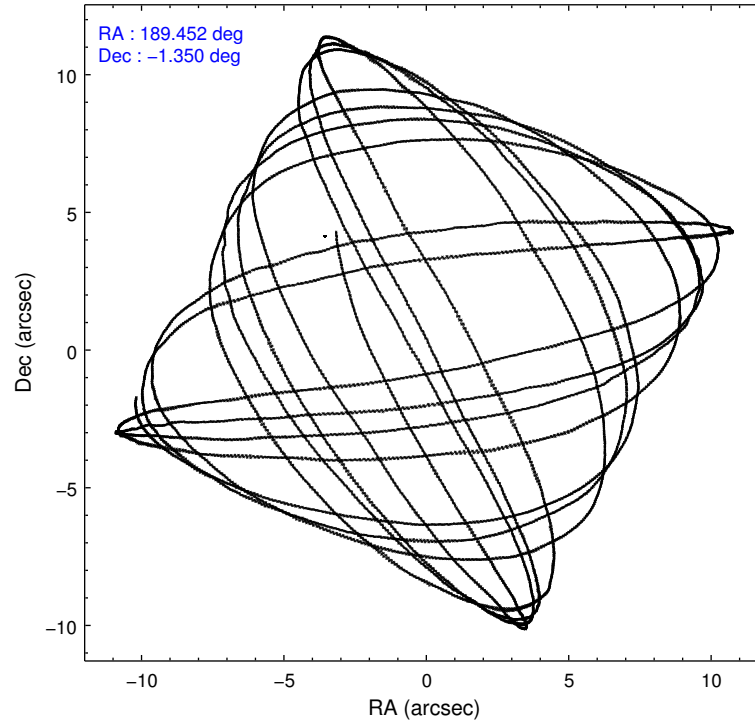
2.1.4 Events

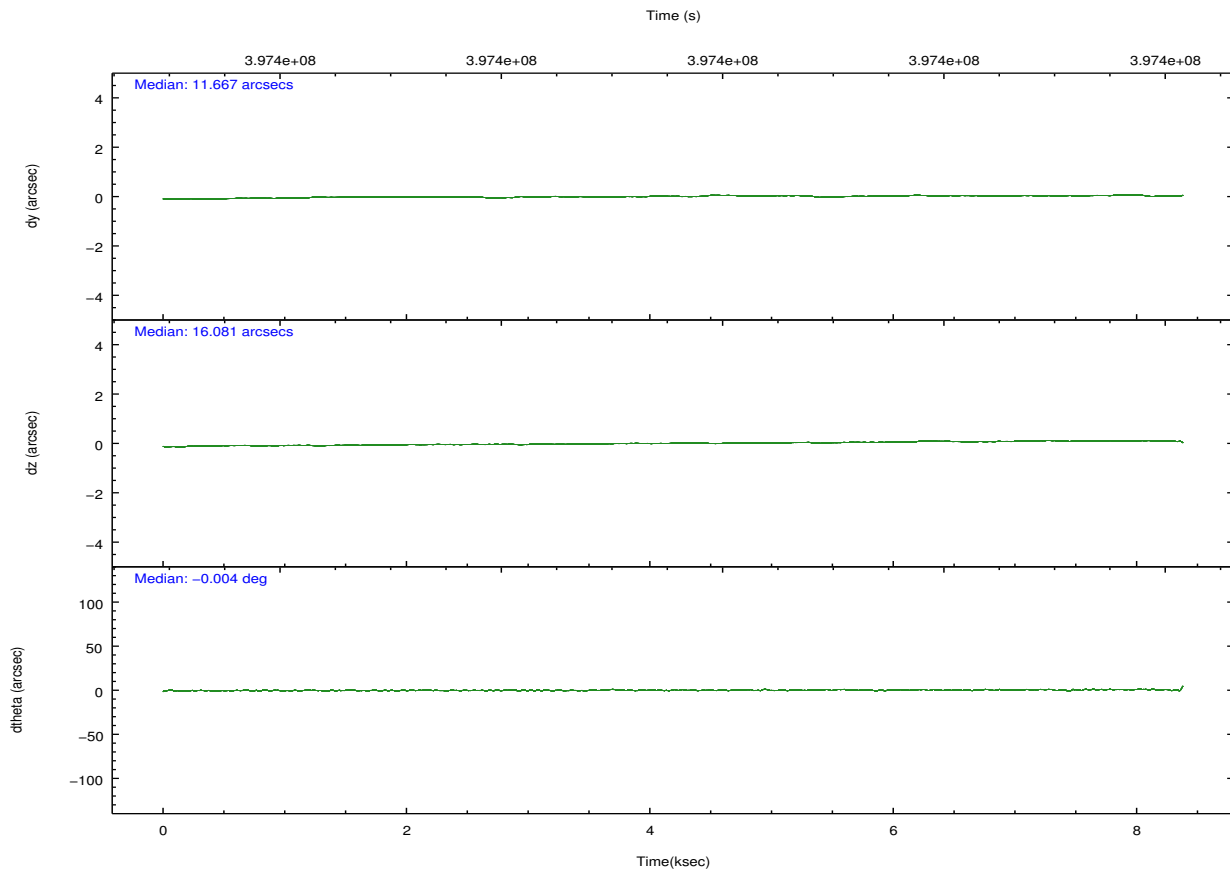
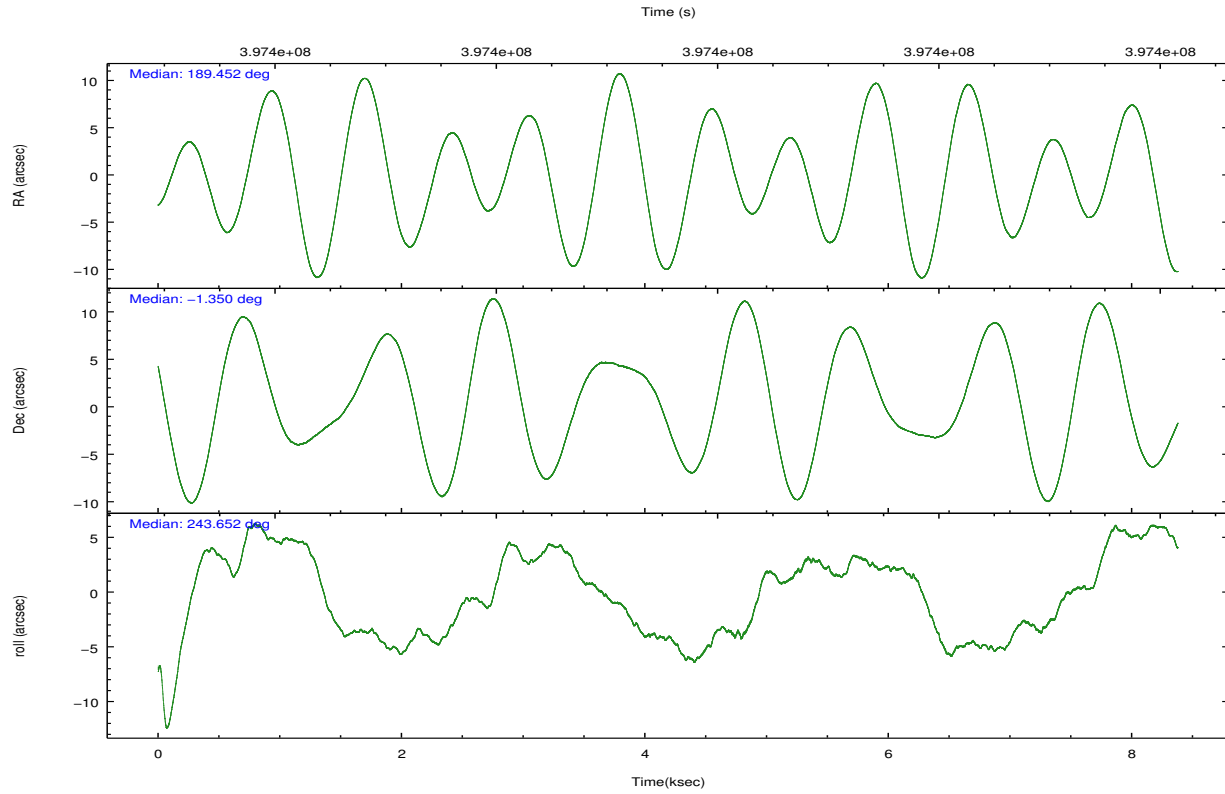
	ccd 4	ccd 5	ccd 6	ccd 7	ccd 8	ccd 9		ccd 4	ccd 5	ccd 6	ccd 7	ccd 8	ccd 9
level 1 events	67291	85834	56620	68353	80929	58752	grade 0 events	4894	5303	2362	3236	7022	6405
rejected events	58257	42672	50177	36723	58355	48251		7%	6%	4%	4%	8%	10%
rejected %	86%	49%	88%	53%	72%	82%	grade 1 events	86	279	32	78	74	47
								0%	0%	0%	0%	0%	0%
							grade 2 events	1588	12566	1459	6547	4900	1397
								2%	14%	2%	9%	6%	2%
							grade 3 events	705	1770	650	2906	2630	663
								1%	2%	1%	4%	3%	1%
							grade 4 events	695	1647	681	2862	2427	638
								1%	1%	1%	4%	2%	1%
							grade 5 events	2555	6667	2502	6944	3678	2790
								3%	7%	4%	10%	4%	4%
							grade 6 events	1156	21896	1294	16096	5595	1407
								1%	25%	2%	23%	6%	2%
							grade 7 events	55612	35706	47640	29684	54603	45405
								82%	41%	84%	43%	67%	77%

2.2 Compared Parameters

Parameter	Planned	Actual	Parameter	Planned	Actual
Instrument	ACIS	ACIS	Obspar format version number	7	7
Detector	ACIS-456789	ACIS-456789	Obspar file type	PREDICTED	ACTUAL
Grating	NONE	NONE	Obspar update status	NONE	UPDATED
Data mode	VFAINT	VFAINT	CCD I0 on	N	N
Observation mode	POINTING	POINTING	CCD I1 on	N	N
[deg] Pointing RA	189.449340	189.4514469375803	CCD I2 on	N	N
[deg] Pointing Dec	-1.322389	-1.349719339702612	CCD I3 on	N	N
[deg] Pointing Roll	243.499960	243.6566302071211	CCD S0 on	O1	Y
[mm] SIM focus pos	-0.684267	-0.6828225247311905	CCD S1 on	Y	Y
[mm] SIM defocus	0	0.001444936568705701	CCD S2 on	Y	Y
[mm] SIM translation stage pos	-190.132523	-190.1400660498719	CCD S3 on	Y	Y
[mm] SIM translation stage offset	0	0.00754346686406393	CCD S4 on	Y	Y
[s] Observation start time (MET)	397395540.184000	397394970.16275	CCD S5 on	O2	Y
Observation start date	2010-08-05T11:37:54	2010-08-05T11:29:30	Number of optional ACIS chips dropped	0	0
[s] Observation end time (MET)	397403740.184000	397404645.13825	On-chip summing requested	N	N
Observation end date	2010-08-05T13:54:34	2010-08-05T14:10:45	Subarray requested	NONE	NONE
Read mode	TIMED	TIMED	Alternating exposures requested	N	N
			[s] Primary exposure time	0.000000	3.2

2.3 Aspect



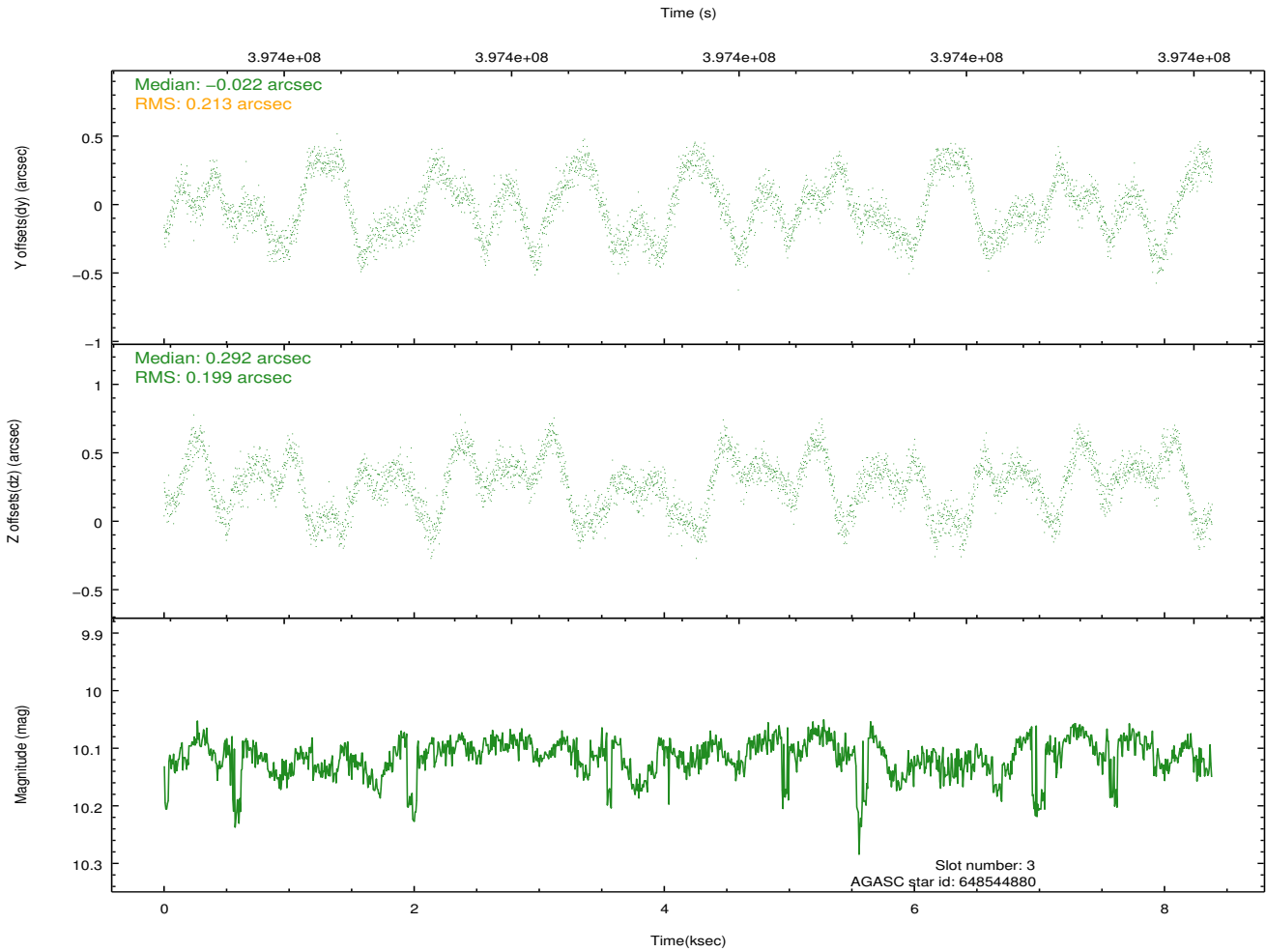
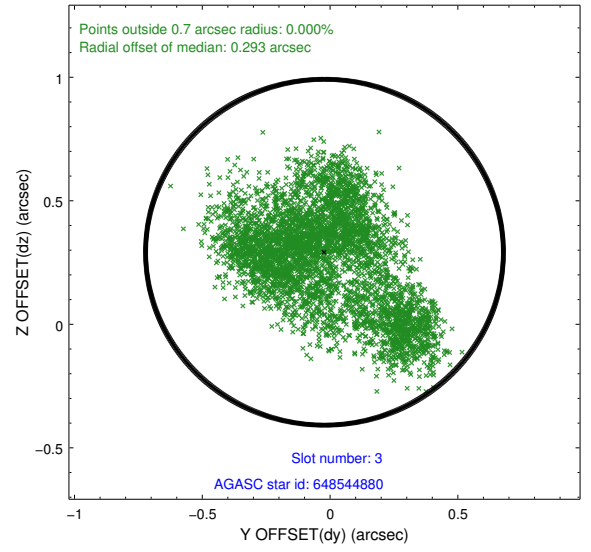
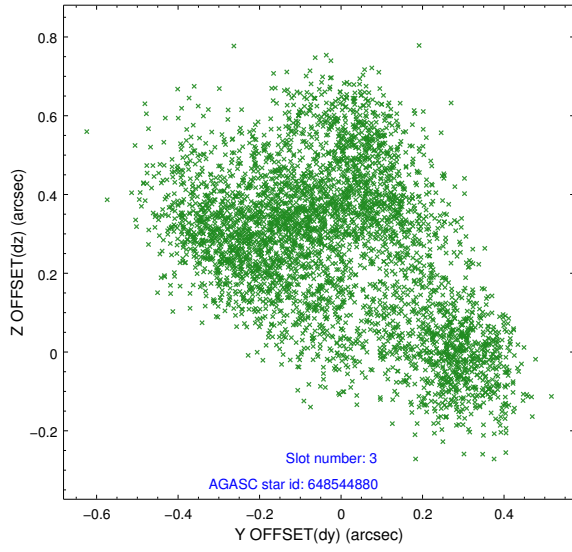


Slot Statistics

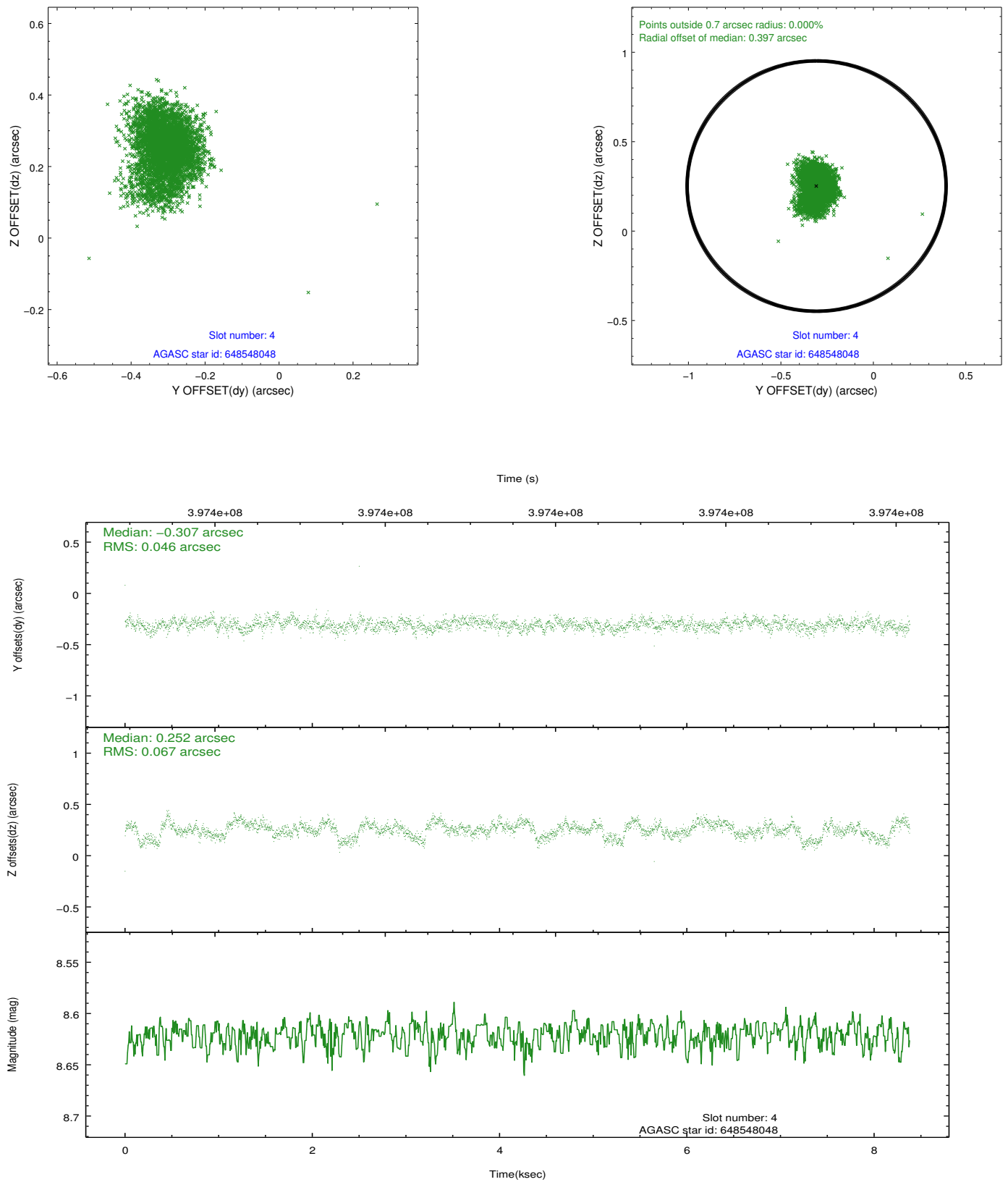
slot	status	id	mag	n_pts	med_dy	med_dz	dr1	dr2	ra	dec	mean_y	mean_z
0	FID	ACIS-S-2	6.88	2044	-0.037	-0.003	0.006	0.010	0.000000	0.000000	-764.57	-1737.50
1	FID	ACIS-S-4	6.97	2044	0.113	0.019	0.005	0.009	0.000000	0.000000	2148.54	170.33
2	FID	ACIS-S-5	6.99	2044	-0.107	-0.006	0.006	0.011	0.000000	0.000000	-1816.64	164.71
3	GUIDE	648544880	10.11	4078	-0.022	0.292	0.314	0.497	189.783918	-1.387009	-328.60	1181.88
4	GUIDE	648548048	8.62	4083	-0.307	0.252	0.086	0.142	189.228766	-0.494782	-2311.71	-2039.73
5	GUIDE	648548584	9.49	4076	-0.411	0.408	0.218	0.315	189.156989	-0.610655	-1823.86	-2084.78
6	GUIDE	648550272	10.25	4085	0.273	0.074	0.162	0.272	188.854156	-1.763558	2377.65	-1207.71
7	GUIDE	648550368	9.74	4081	0.460	-0.992	0.175	0.289	189.002449	-0.709291	-1255.73	-2425.89

2.4 Star Slots

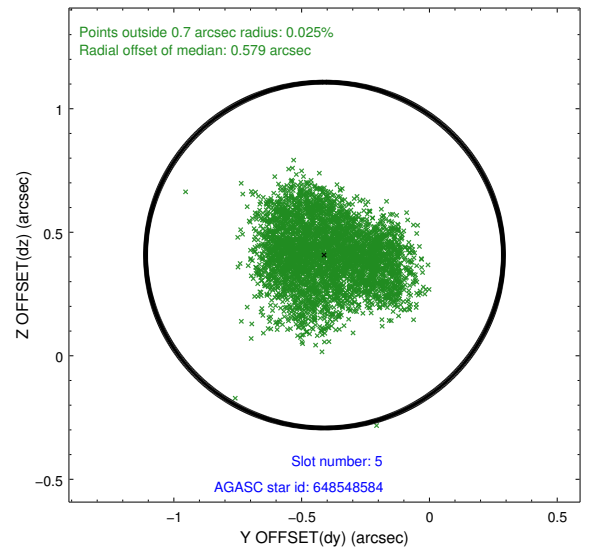
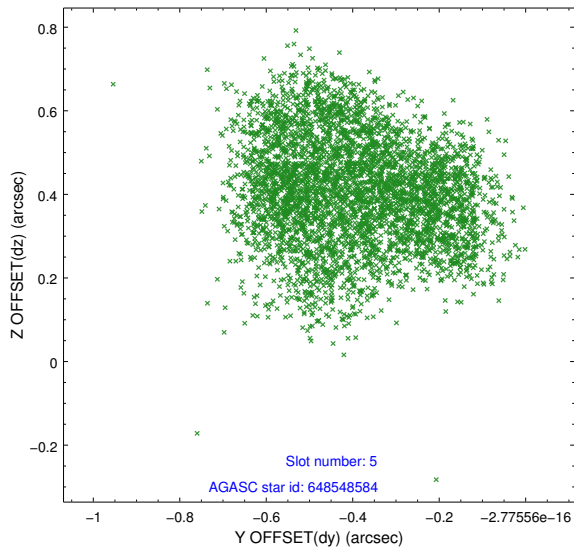
2.4.1 Slot 3



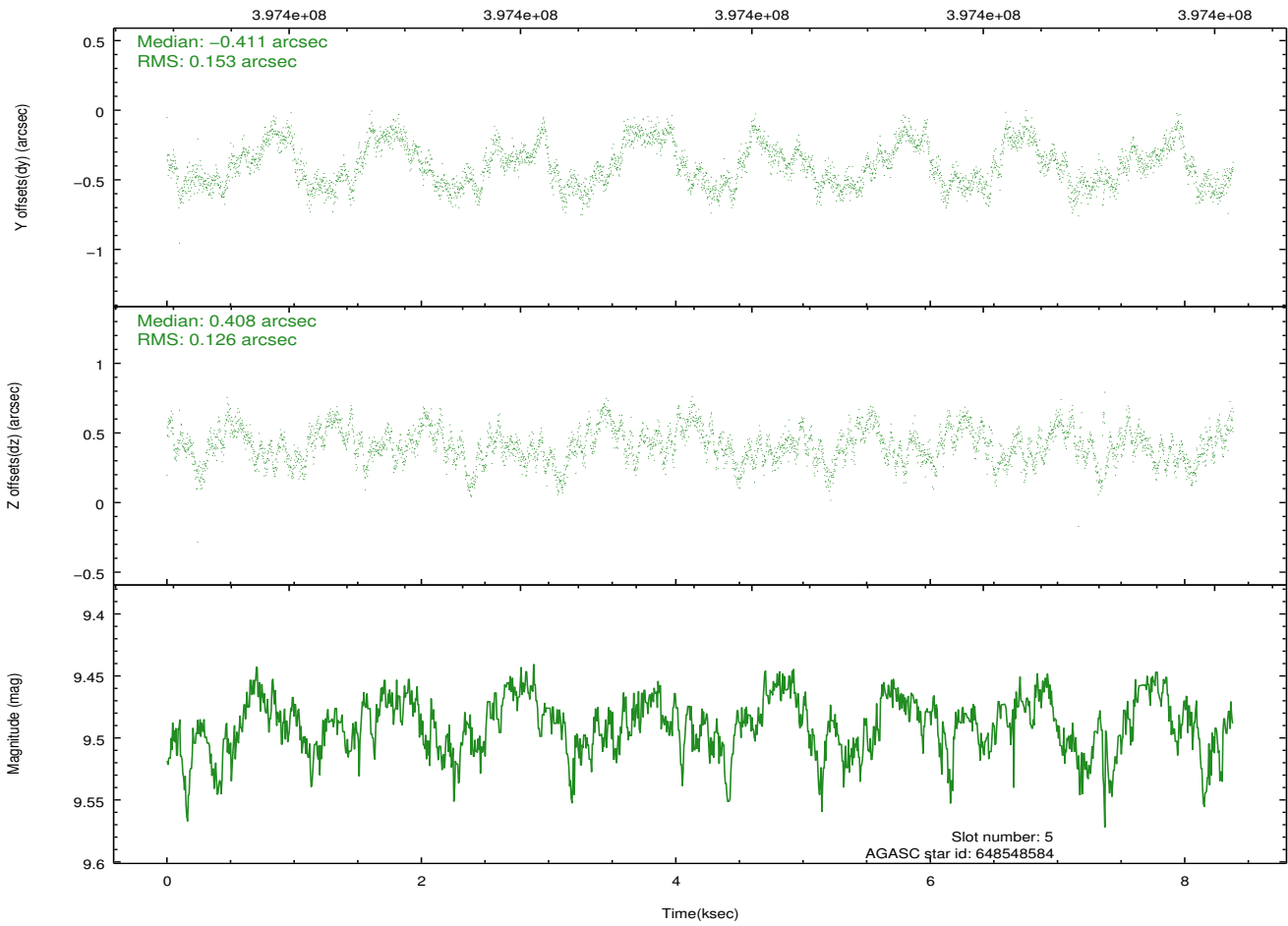
2.4.2 Slot 4



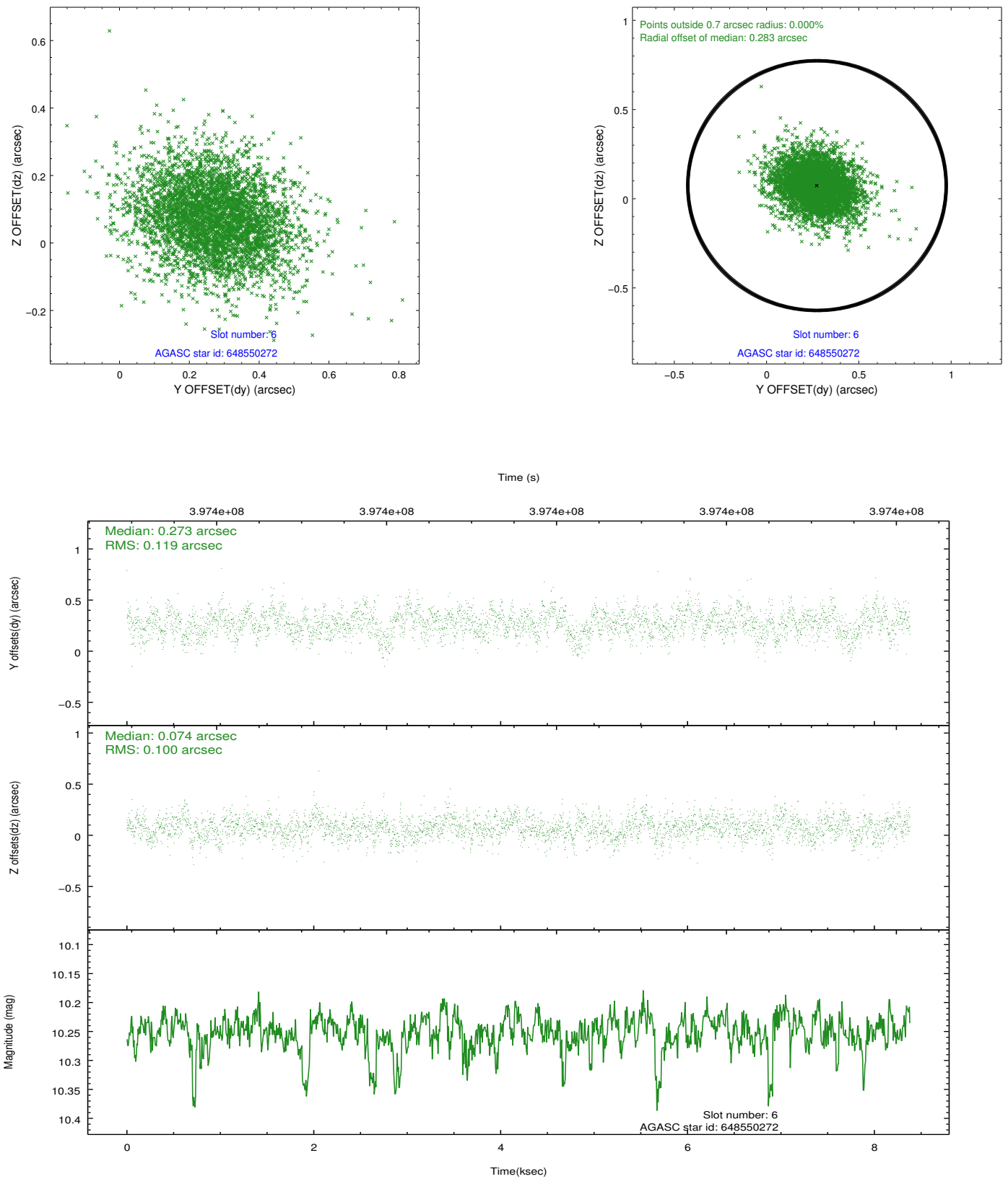
2.4.3 Slot 5



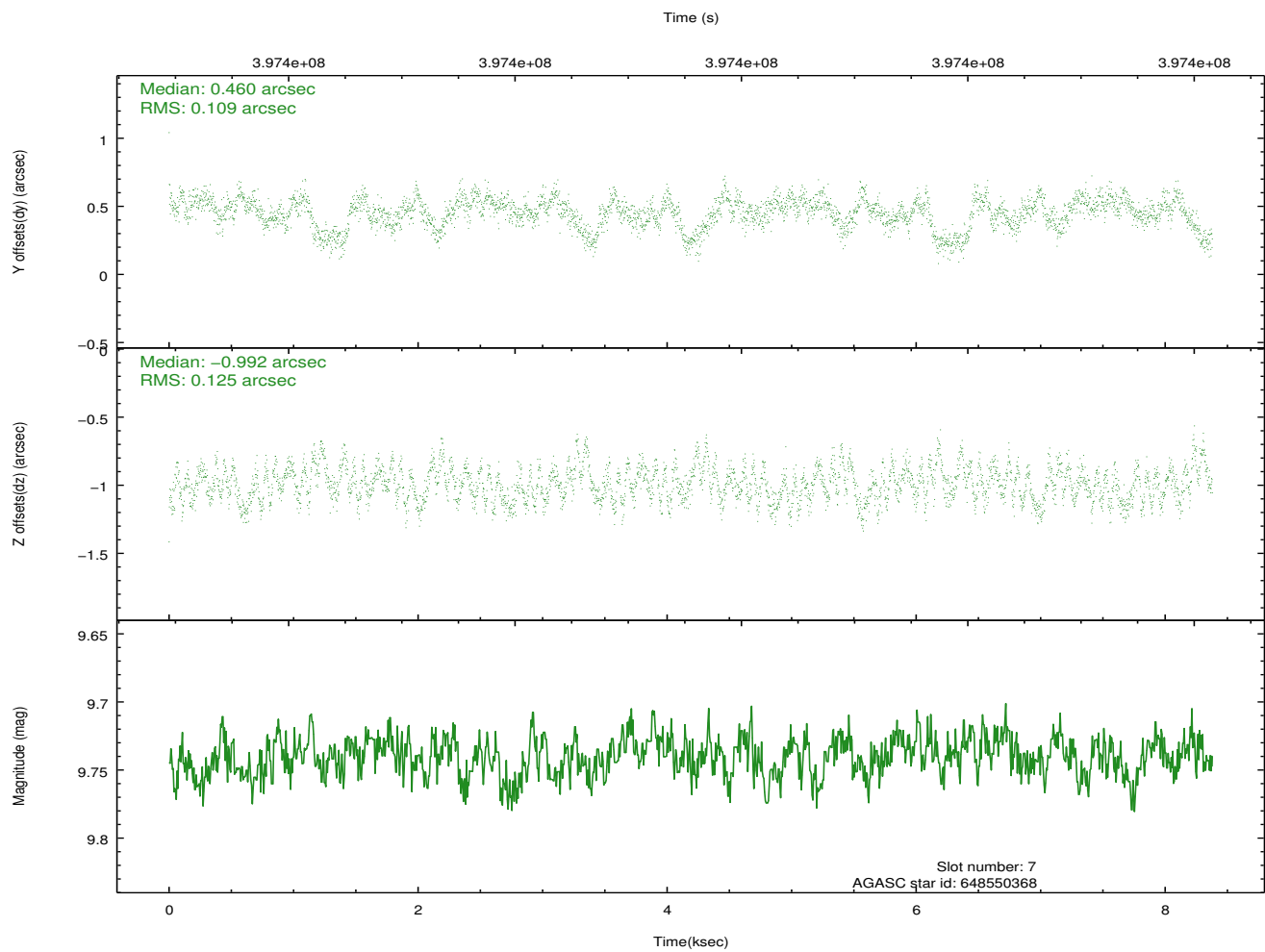
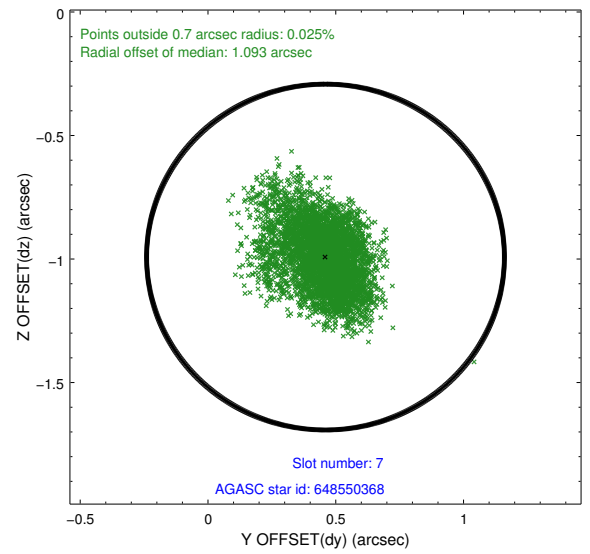
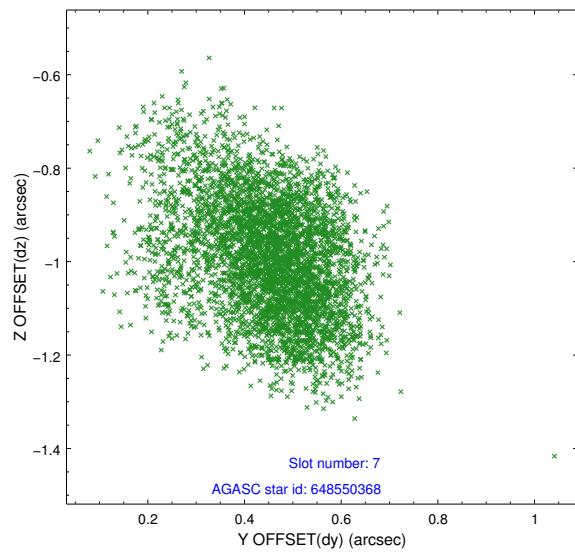
Time (s)



2.4.4 Slot 6

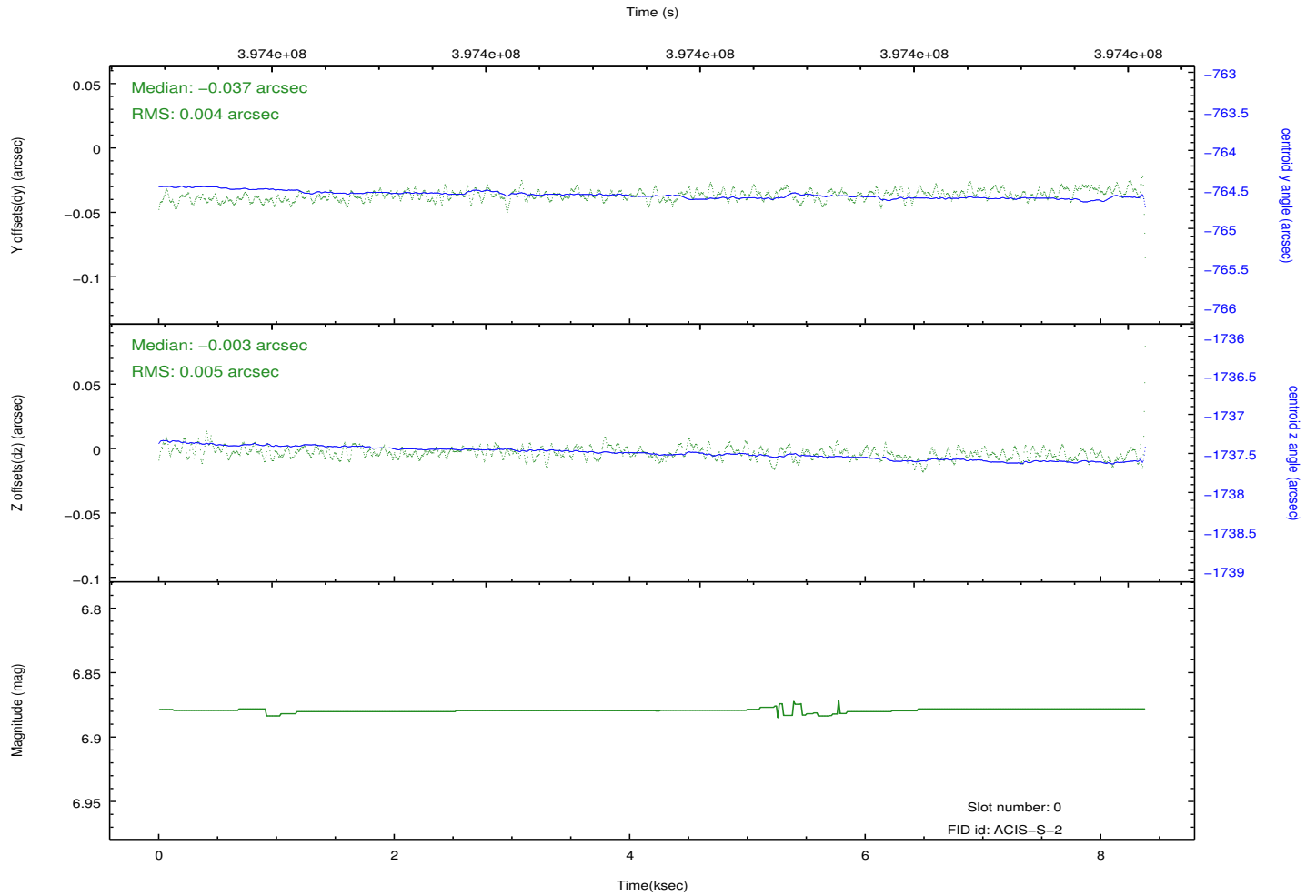
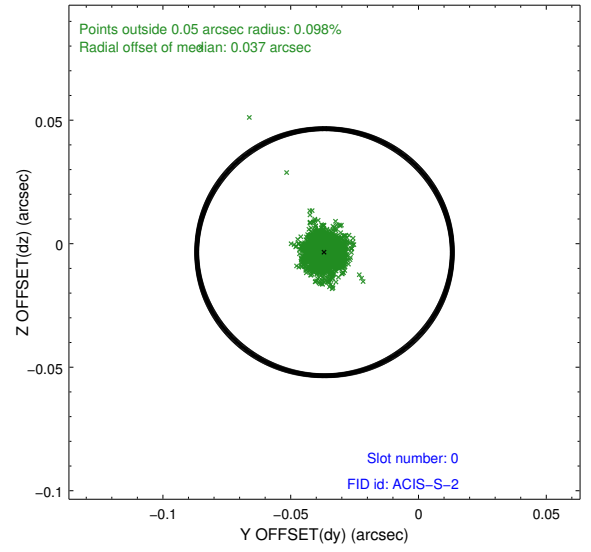
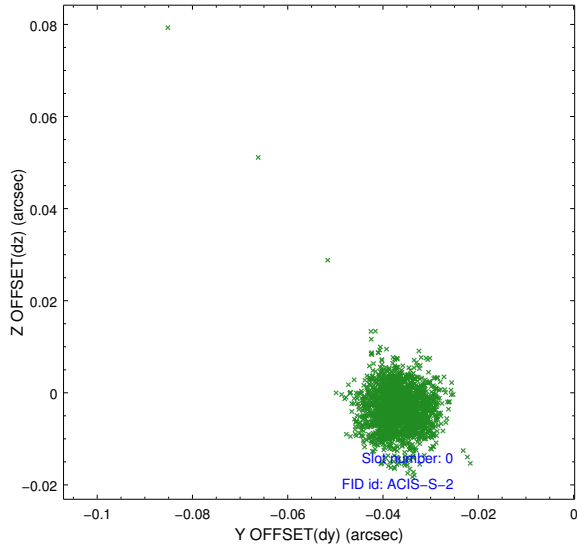


2.4.5 Slot 7

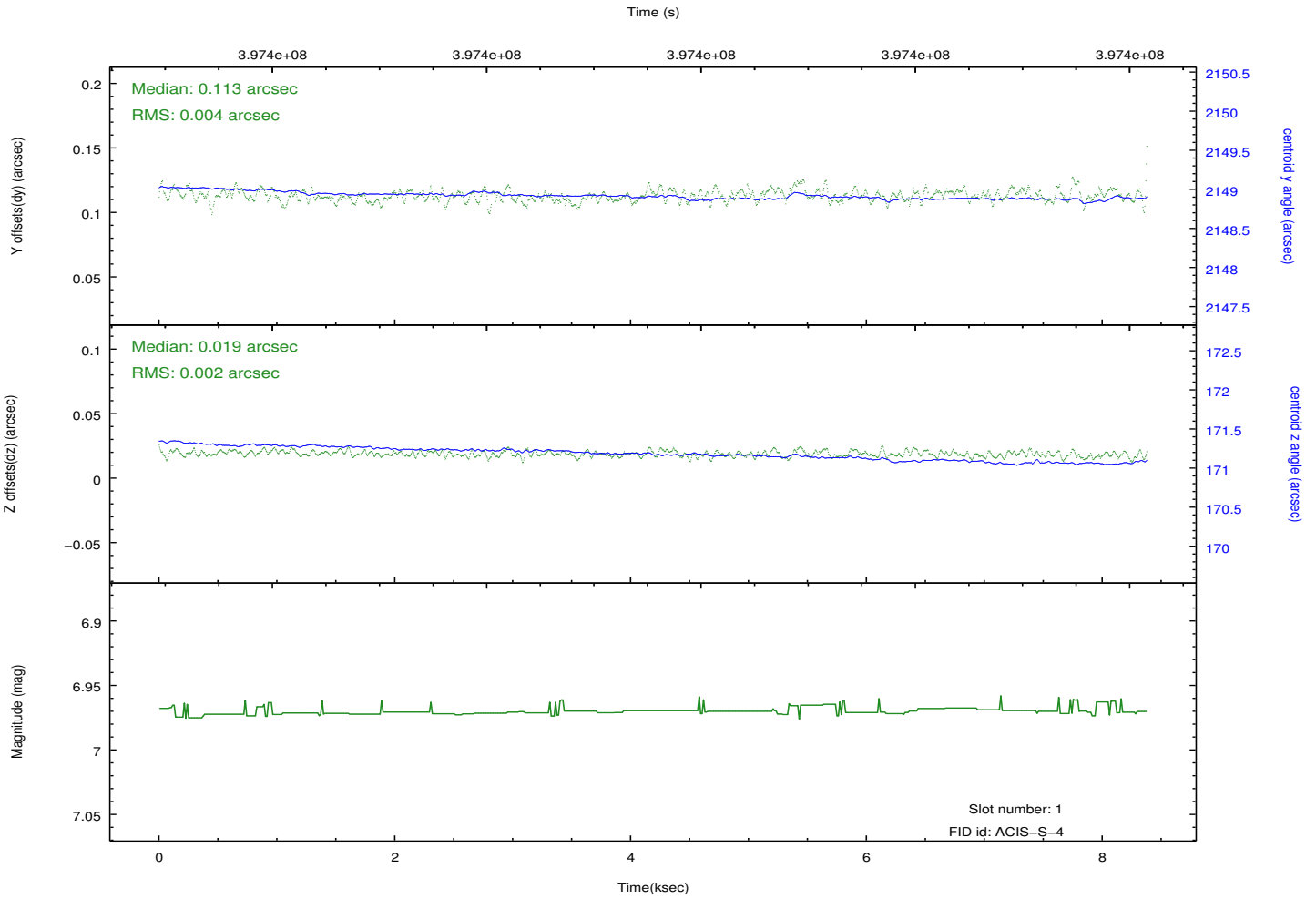
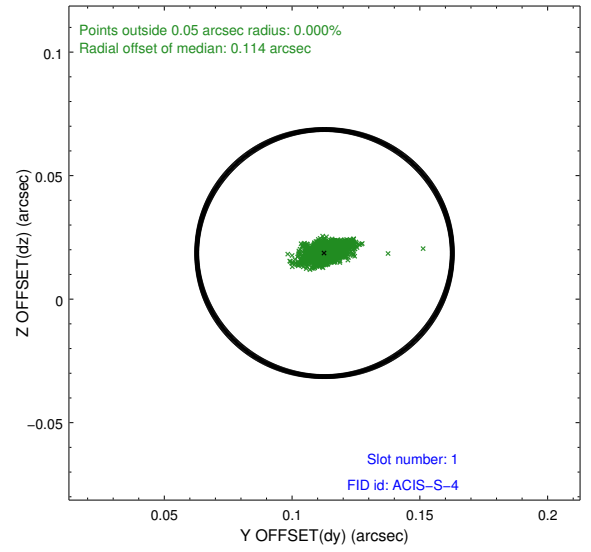
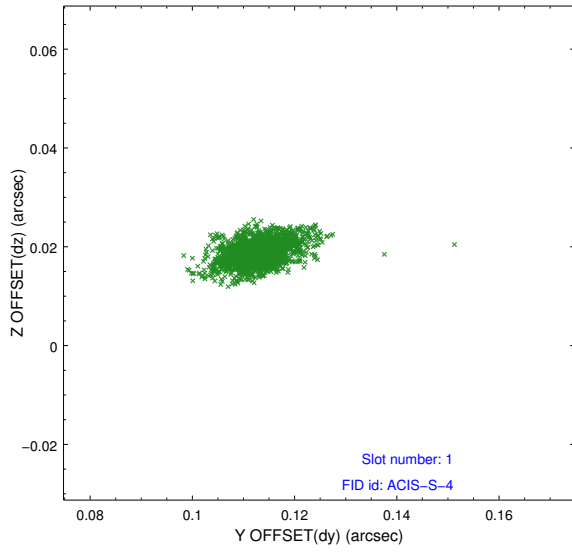


2.5 FID Slots

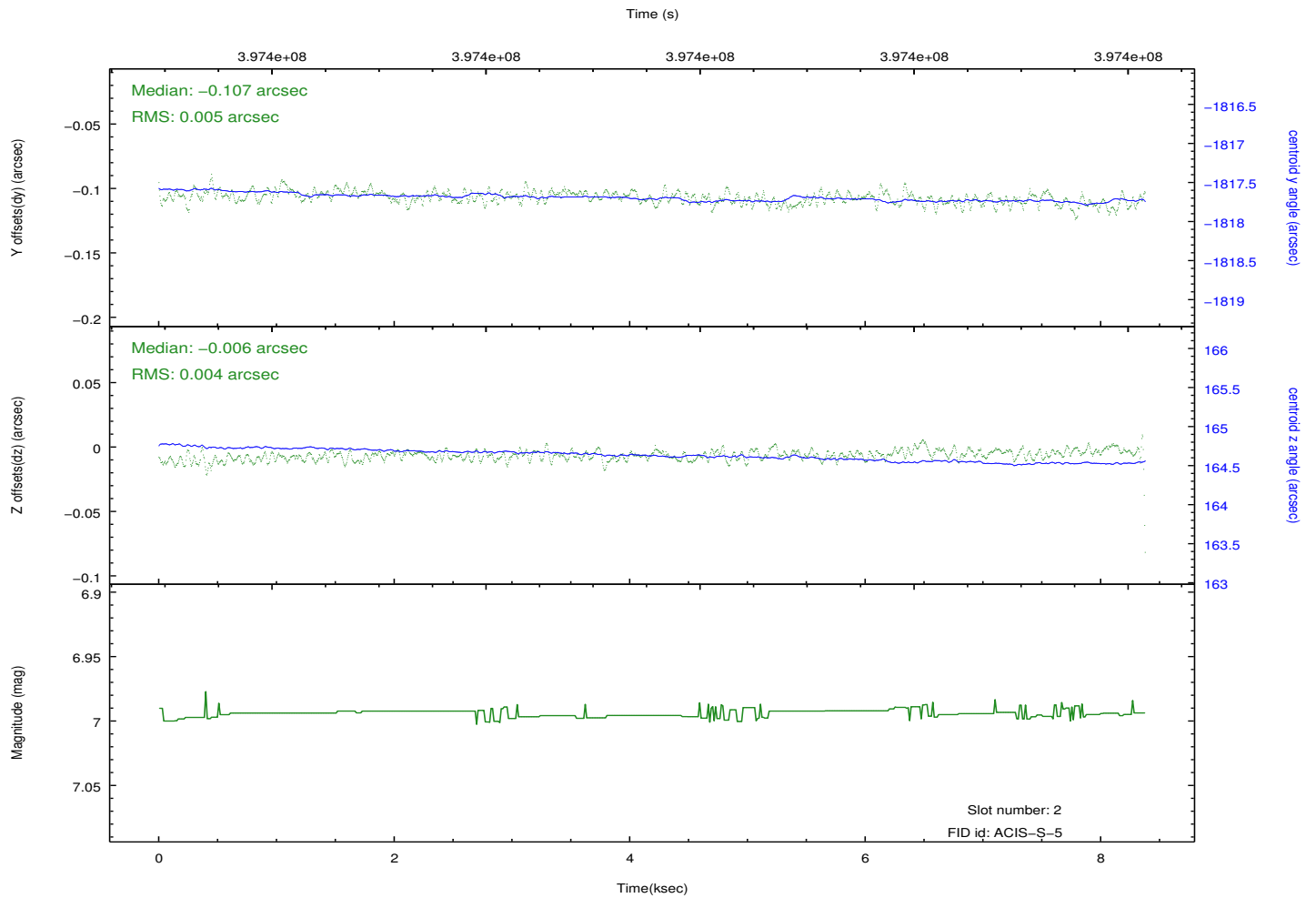
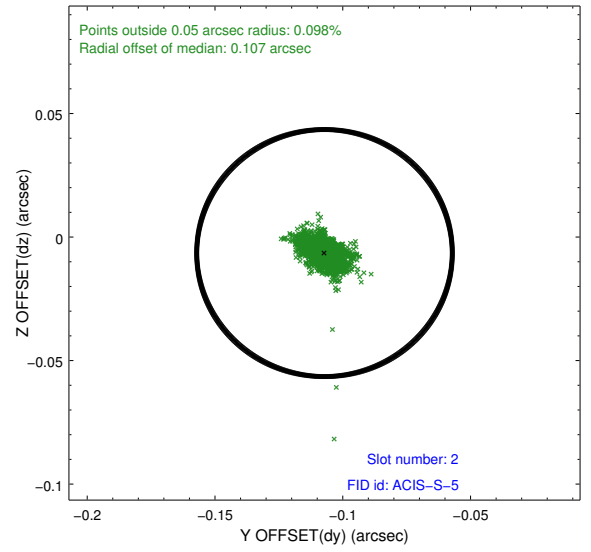
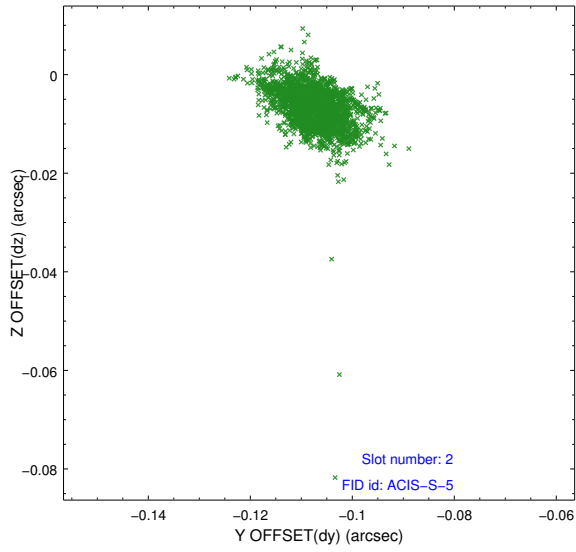
2.5.1 Slot 0



2.5.2 Slot 1



2.5.3 Slot 2



A Summary

A.1 Status

V&V Scientist	Jen Lauer
V&V Date (YYYY-MM-DD)	2012.07.10
V&V Edition	1
V&V Disposition and Status	OK
V&V Charge Time	7.9551999704242

A.2 Comments