

V&V Reference Report

L2 ASCDS Version : 8.4.5

Observation 11590 - L2 Version 2
Chandra X-Ray Center

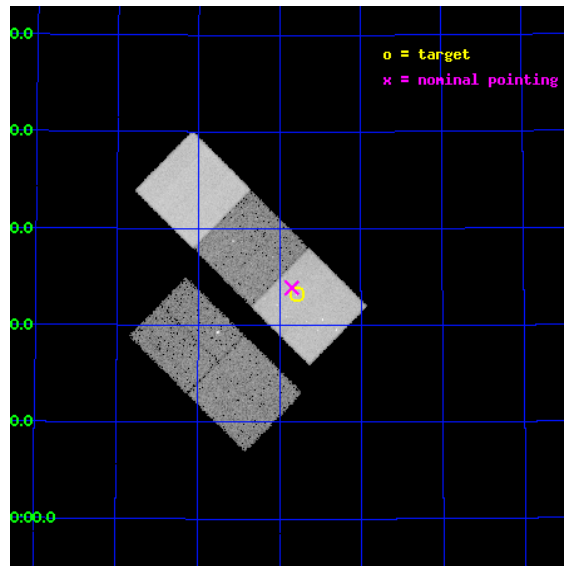
L2 Processing Date : Jun 15 2012

Contents

1	Front	2
2	OBI	3
2.1	OBI	3
2.1.1	Images	3
2.1.2	Bias	3
2.1.3	Parameters	4
2.1.4	Events	4
2.2	Compared Parameters	5
2.3	Aspect	6
2.4	Star Slots	9
2.4.1	Slot 3	9
2.4.2	Slot 4	10
2.4.3	Slot 5	11
2.4.4	Slot 6	12
2.4.5	Slot 7	13
2.5	FID Slots	14
2.5.1	Slot 0	14
2.5.2	Slot 1	15
2.5.3	Slot 2	16
A	Summary	17
A.1	Status	17
A.2	Comments	17

1 Front

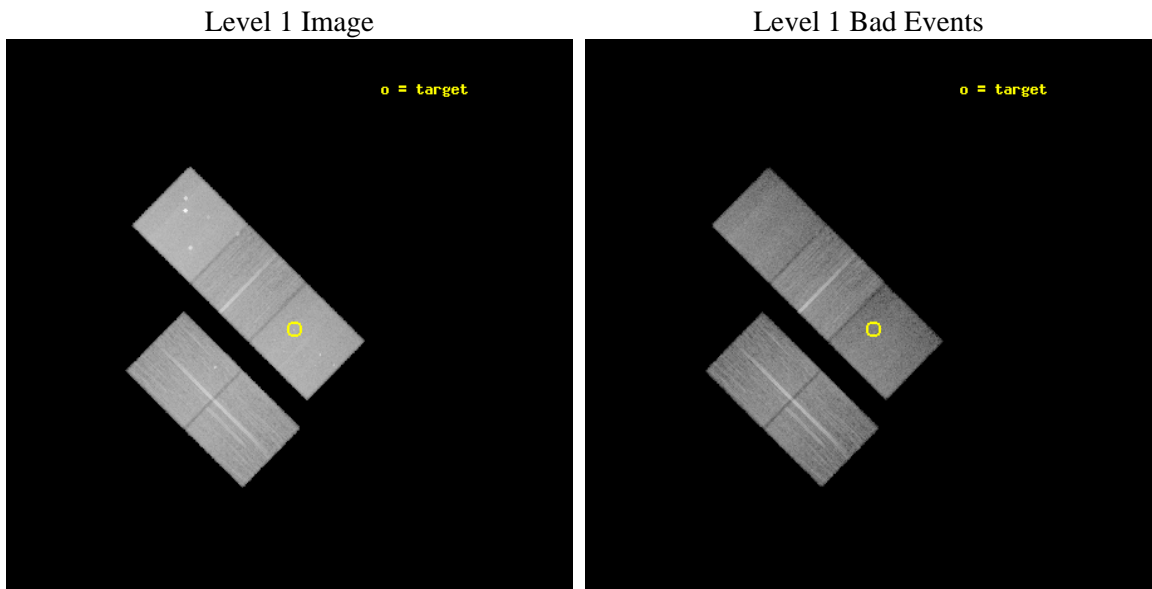
seq_num	702176	Sequence number
obs_id	11590	Observation id
title	Strong radio AGN in the center of galaxy groups	Proposal title
observer	Dr. Ming Sun	Principal investigator
object	C4-DR5-3164	Source name
dtcycle	0	
cycle	P	events from which exps? Prim/Second/Both
ra_targ	162.9475	Observer's specified target RA [deg]
dec_targ	55.386667	Observer's specified target Dec [deg]
ra_nom	162.96209541489	Nominal RA [deg]
dec_nom	55.398372747109	Nominal Dec [deg]
roll_nom	44.66641856582	Nominal Roll [deg]
revision	2	Processing version of data
ontime	22140.200170279	Sum of GTIs [s]
livetime	21850.922155676	Livetime [s]
ontime2	22137.059199929	Sum of GTIs [s]
ontime3	22137.059169948	Sum of GTIs [s]
ontime5	22140.200170279	Sum of GTIs [s]
ontime6	22137.059160054	Sum of GTIs [s]
ontime7	22140.200170279	Sum of GTIs [s]
l2events	279448	Number of level 2 events



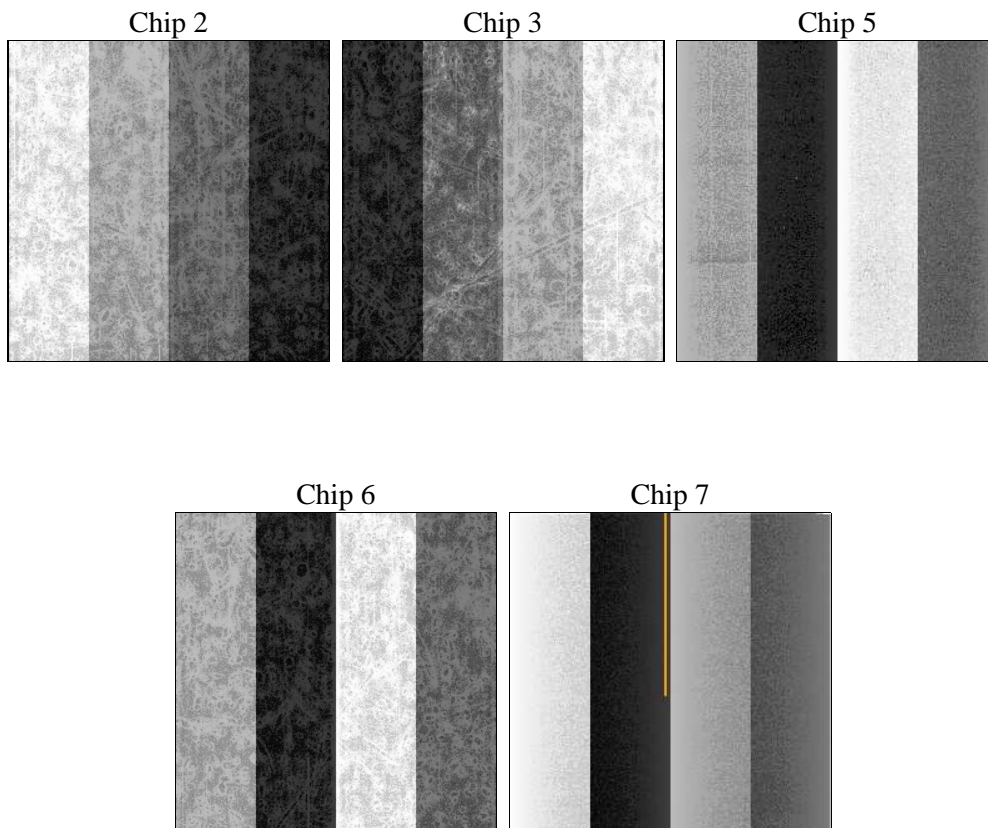
2 OBI

2.1 OBI

2.1.1 Images



2.1.2 Bias



2.1.3 Parameters

obi_num	0	Obi number	sched_exp_time	22000.000000	[s] Scheduled observation exposure time
ascdsver	8.4.5	Processing system revision	ontime	22140.200170279	Sum of GTIs [s]
caldsver	4.4.10	 	ontime2	22137.059199929	Sum of GTIs [s]
date	2012-06-15T01:22:05	Date and time of file creation	ontime3	22137.059169948	Sum of GTIs [s]
revision	2	Processing version of data	ontime5	22140.200170279	Sum of GTIs [s]
			ontime6	22137.059160054	Sum of GTIs [s]
			ontime7	22140.200170279	Sum of GTIs [s]
			l1events	1100787	Number of level 1 events

2.1.4 Events

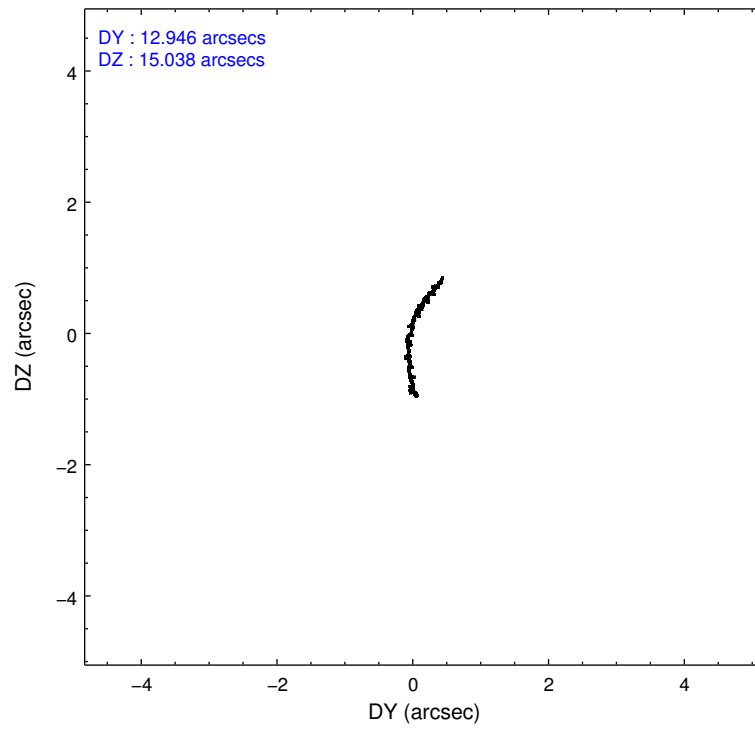
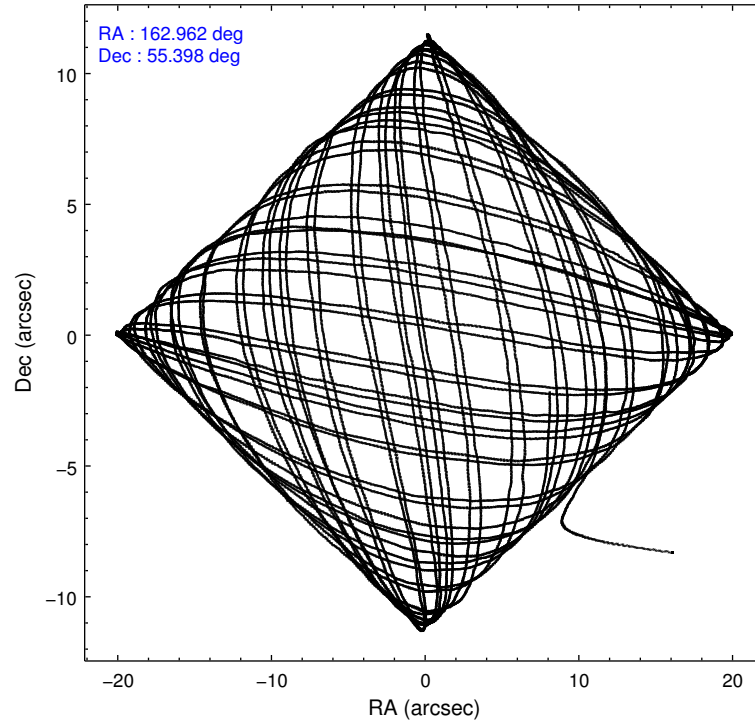
	ccd 2	ccd 3	ccd 5	ccd 6	ccd 7
level 1 events	199704	189382	285203	199274	227224
rejected events	180102	170827	143780	178504	124225
rejected %	90%	90%	50%	89%	54%

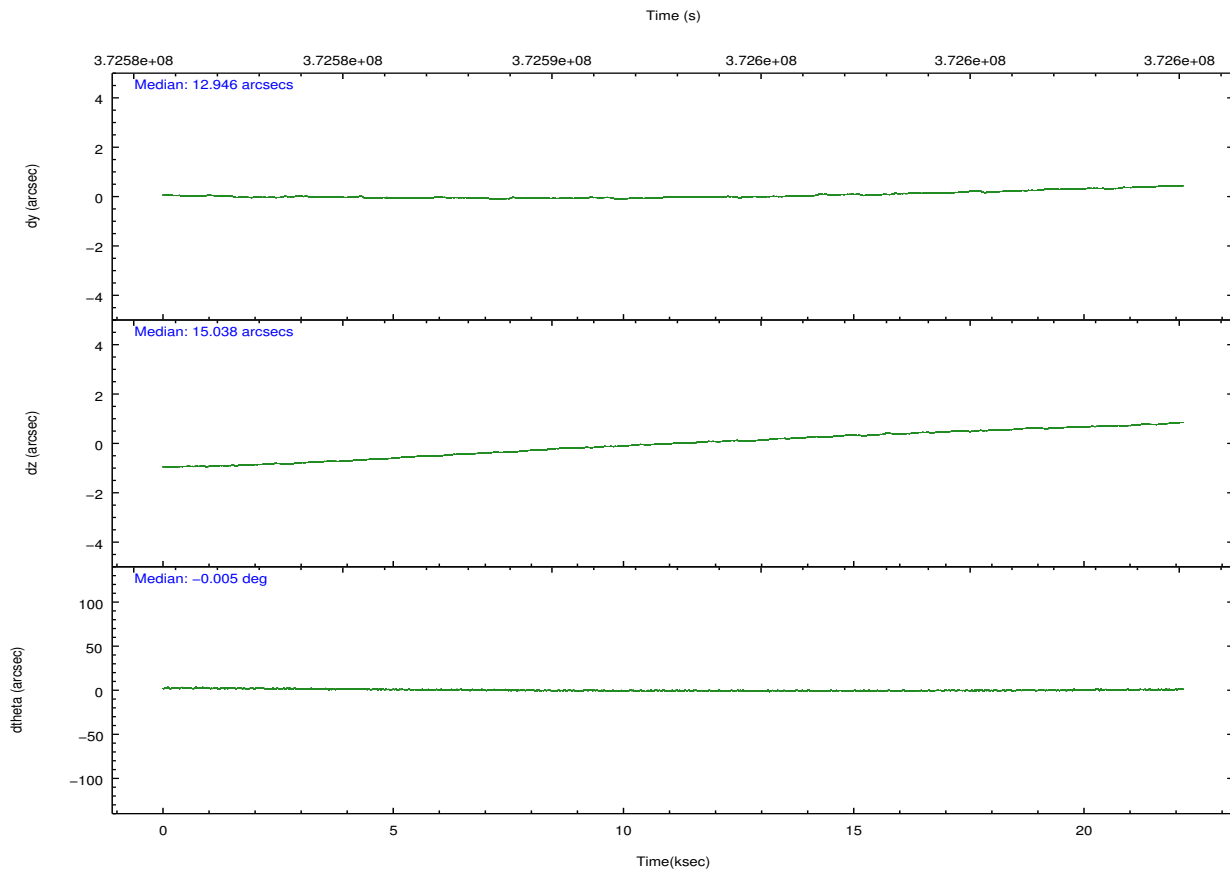
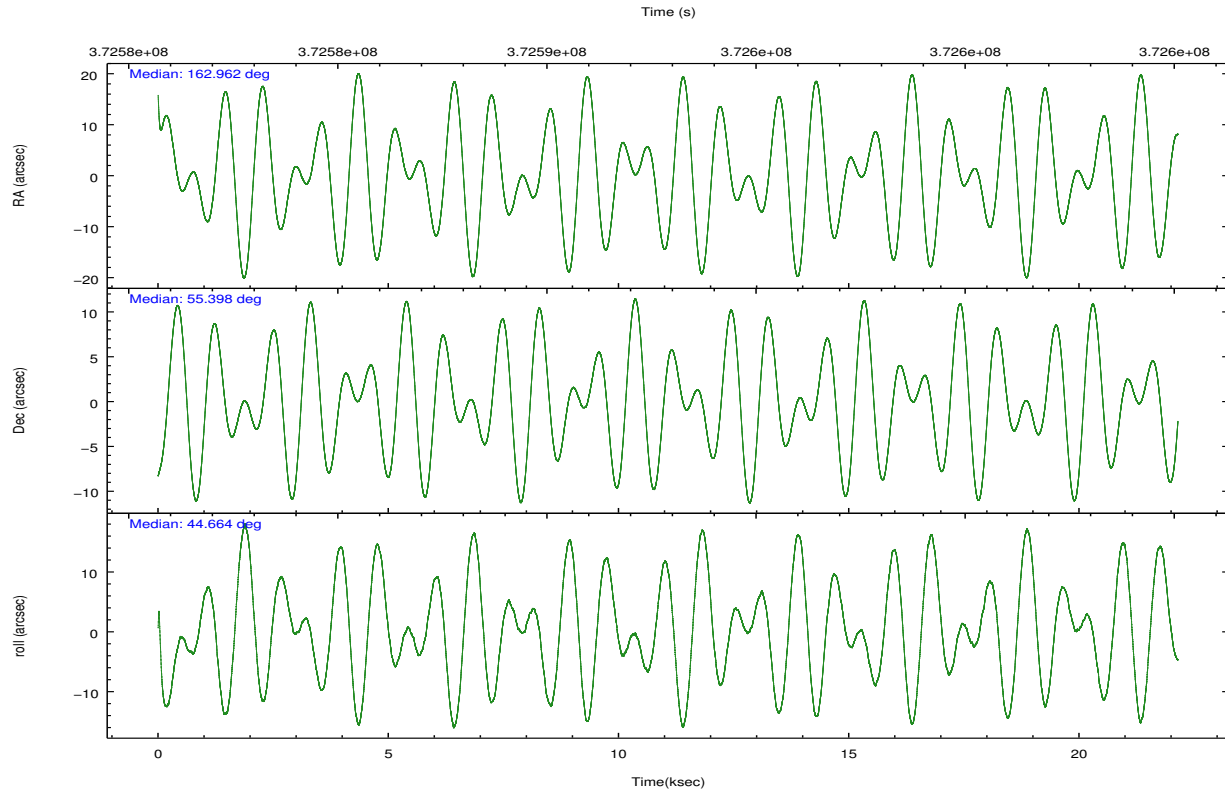
	ccd 2	ccd 3	ccd 5	ccd 6	ccd 7
grade 0 events	7381	6644	18271	7514	10236
	3%	3%	6%	3%	4%
grade 1 events	112	112	739	117	278
	0%	0%	0%	0%	0%
grade 2 events	4693	4175	41415	4760	21457
	2%	2%	14%	2%	9%
grade 3 events	2026	2112	5488	2196	9361
	1%	1%	1%	1%	4%
grade 4 events	2150	2137	5215	2163	9314
	1%	1%	1%	1%	4%
grade 5 events	6715	8015	21414	8245	23699
	3%	4%	7%	4%	10%
grade 6 events	3616	3743	73195	4430	54071
	1%	1%	25%	2%	23%
grade 7 events	173011	162444	119466	169849	98808
	86%	85%	41%	85%	43%

2.2 Compared Parameters

Parameter	Planned	Actual	Parameter	Planned	Actual
Instrument	ACIS	ACIS	Obspar format version number	7	7
Detector	ACIS-23567	ACIS-23567	Obspar file type	PREDICTED	ACTUAL
Grating	NONE	NONE	Obspar update status	NONE	UPDATED
Data mode	VFAINT	VFAINT	CCD I0 on	N	N
Observation mode	POINTING	POINTING	CCD I1 on	N	N
[deg] Pointing RA	162.949974	162.9620954148898	CCD I2 on	O1	Y
[deg] Pointing Dec	55.371925	55.39837274710943	CCD I3 on	Y	Y
[deg] Pointing Roll	44.519762	44.66641856582012	CCD S0 on	N	N
[mm] SIM focus pos	-0.684267	-0.6828225247311905	CCD S1 on	Y	Y
[mm] SIM defocus	0	0.001444936568705701	CCD S2 on	Y	Y
[mm] SIM translation stage pos	-190.132523	-190.1425803651734	CCD S3 on	Y	Y
[mm] SIM translation stage offset	0	0.01005778216563158	CCD S4 on	N	N
[s] Observation start time (MET)	372581973.184000	372580840.25345	CCD S5 on	N	N
Observation start date	2009-10-22T06:58:27	2009-10-22T06:40:40	Number of optional ACIS chips dropped	0	0
[s] Observation end time (MET)	372603973.184000	372604833.96716	On-chip summing requested	N	N
Observation end date	2009-10-22T13:05:07	2009-10-22T13:20:33	Subarray requested	NONE	NONE
Read mode	TIMED	TIMED	Alternating exposures requested	N	N
			[s] Primary exposure time	0.000000	3.1

2.3 Aspect



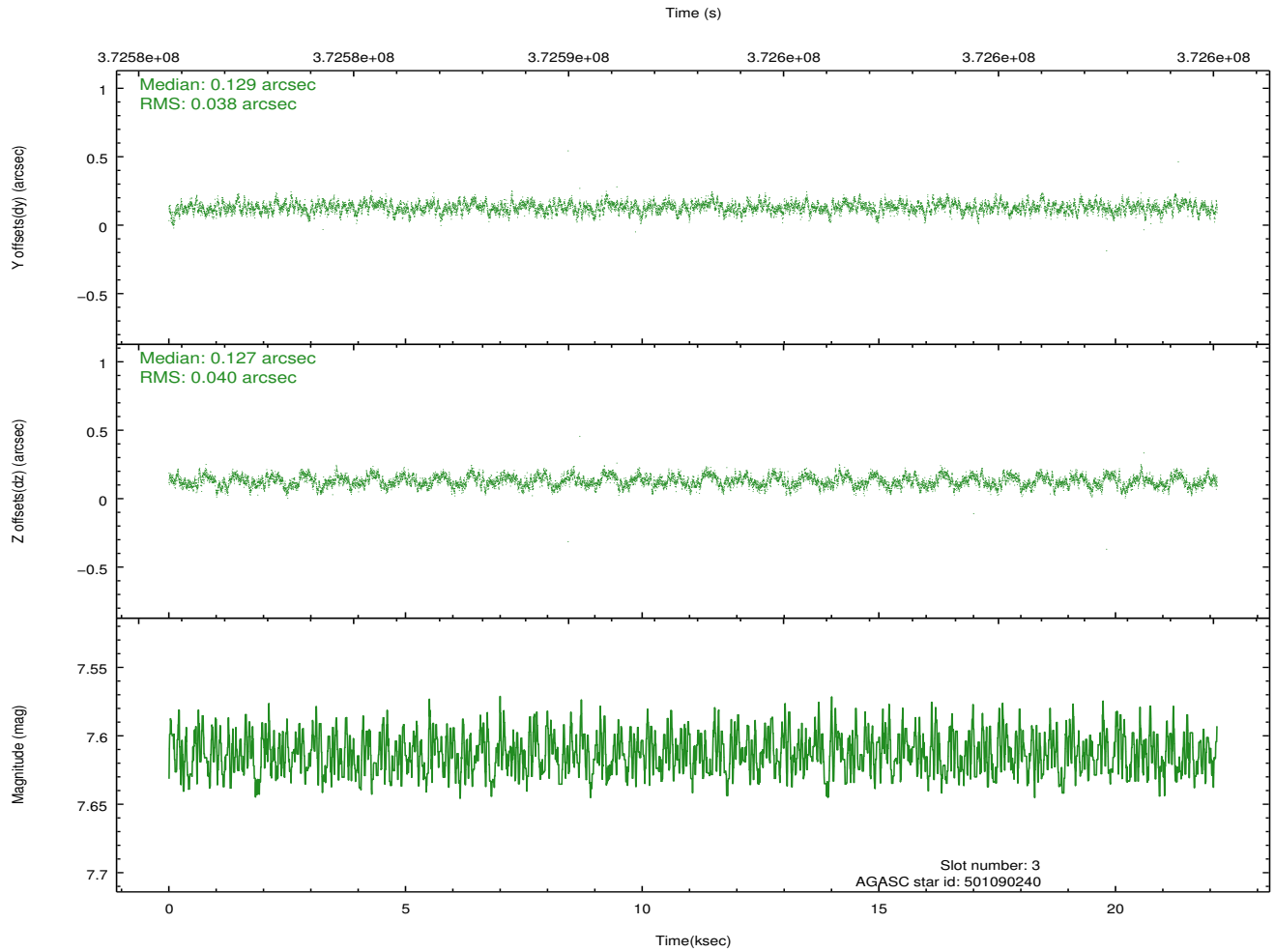
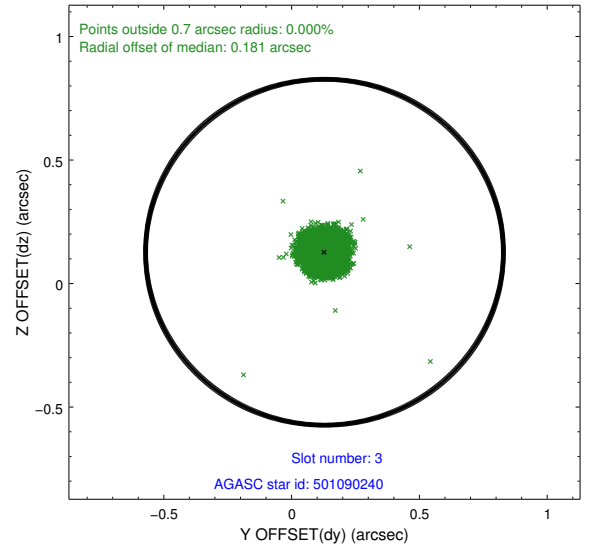
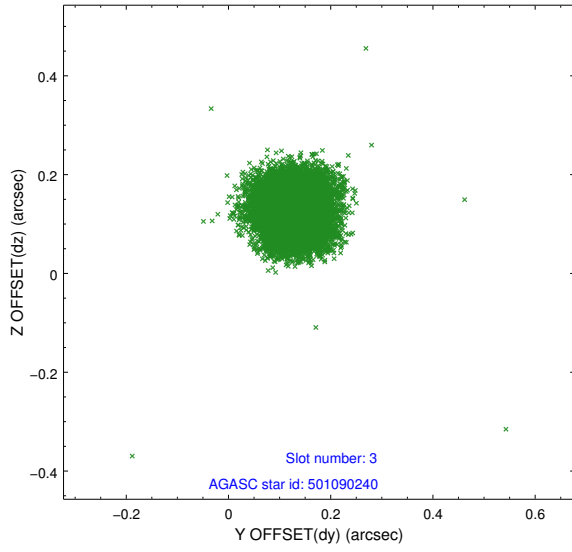


Slot Statistics

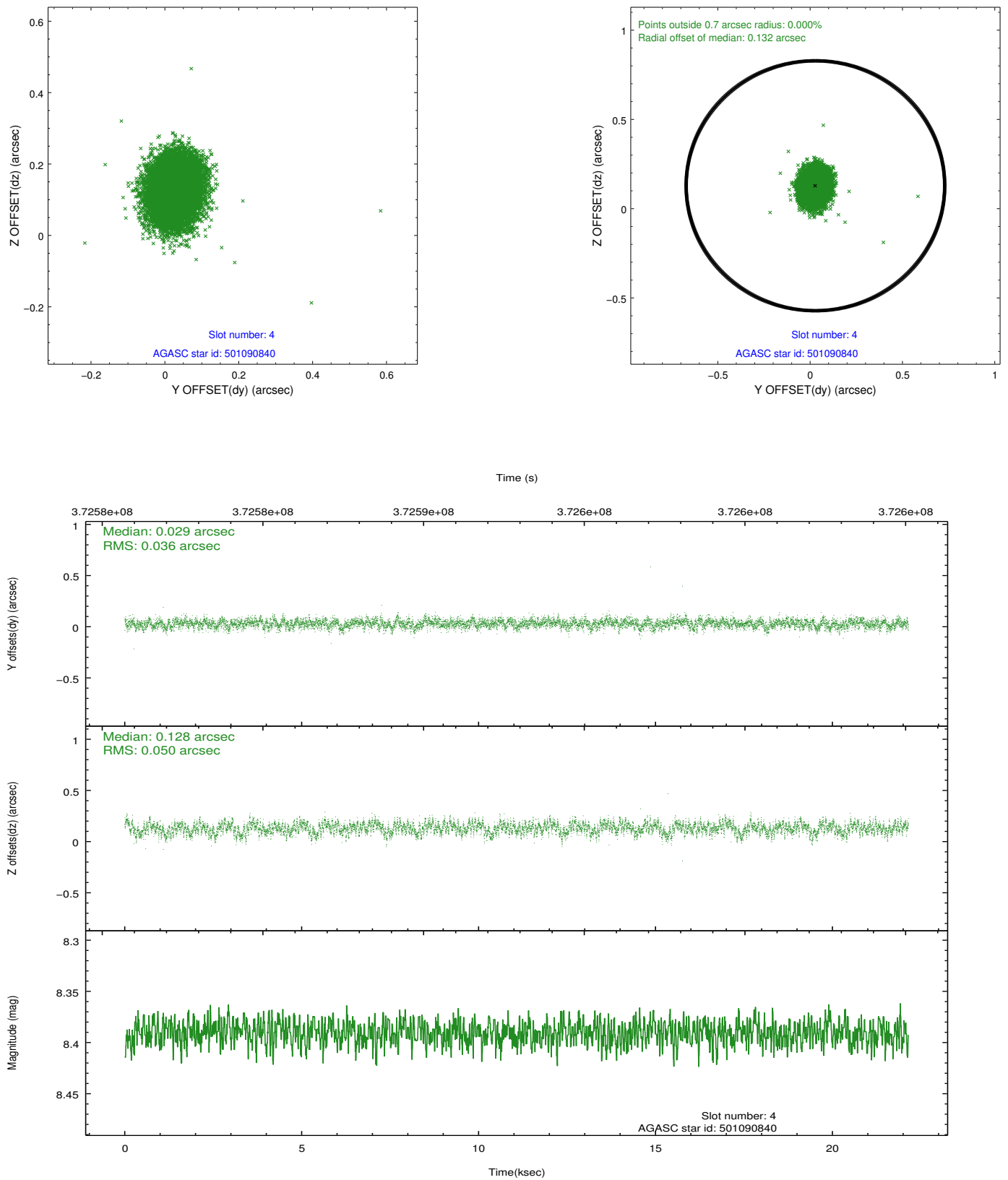
slot	status	id	mag	n_pts	med_dy	med_dz	dr1	dr2	ra	dec	mean_y	mean_z
0	FID	ACIS-S-2	6.90	5402	-0.054	-0.023	0.011	0.023	0.000000	0.000000	-765.95	-1736.36
1	FID	ACIS-S-4	6.99	5402	0.169	0.032	0.008	0.016	0.000000	0.000000	2147.45	172.07
2	FID	ACIS-S-5	7.02	5400	-0.148	-0.001	0.013	0.021	0.000000	0.000000	-1818.72	165.82
3	GUIDE	501090240	7.61	10802	0.129	0.127	0.059	0.092	163.533846	54.800857	-573.89	-2311.73
4	GUIDE	501090840	8.39	10794	0.029	0.128	0.065	0.105	162.716236	54.745640	-1926.20	-1266.50
5	GUIDE	501483392	8.97	10789	-0.132	-0.093	0.065	0.106	163.119491	56.165550	2244.18	1799.84
6	GUIDE	501483928	9.34	10789	-0.065	-0.246	0.087	0.139	162.842069	56.191074	1914.18	2254.47
7	GUIDE	501614984	7.99	10797	0.045	0.084	0.083	0.140	164.489536	55.429991	2413.67	-2030.31

2.4 Star Slots

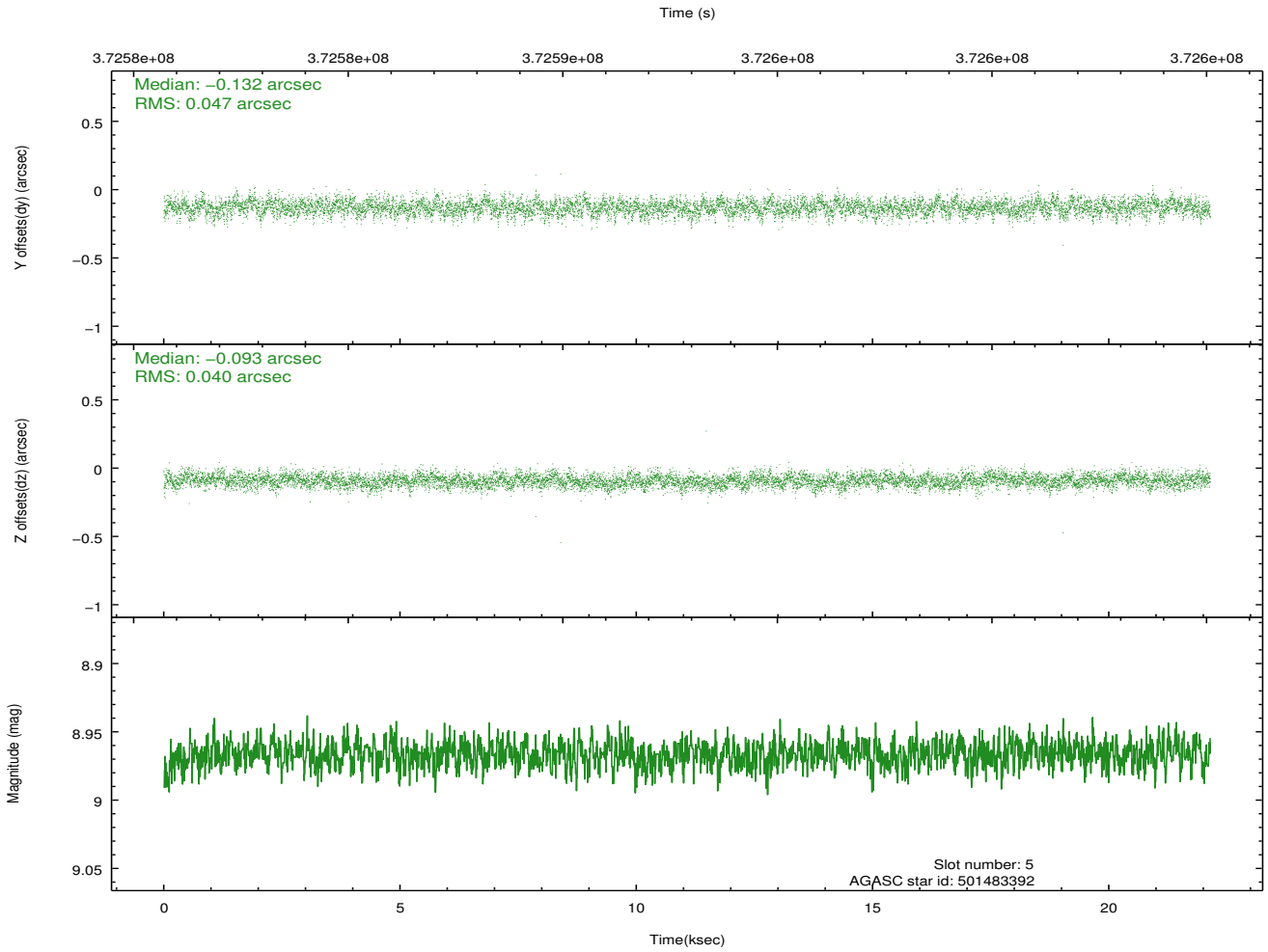
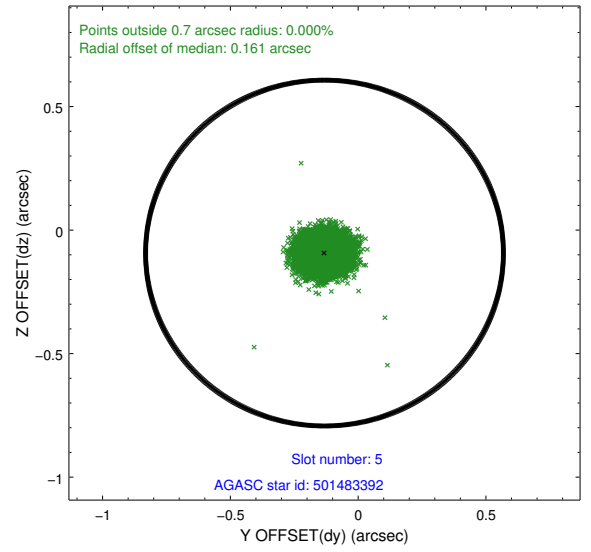
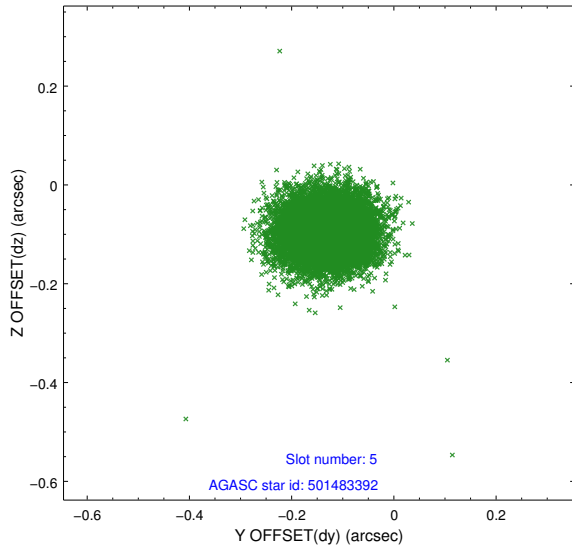
2.4.1 Slot 3



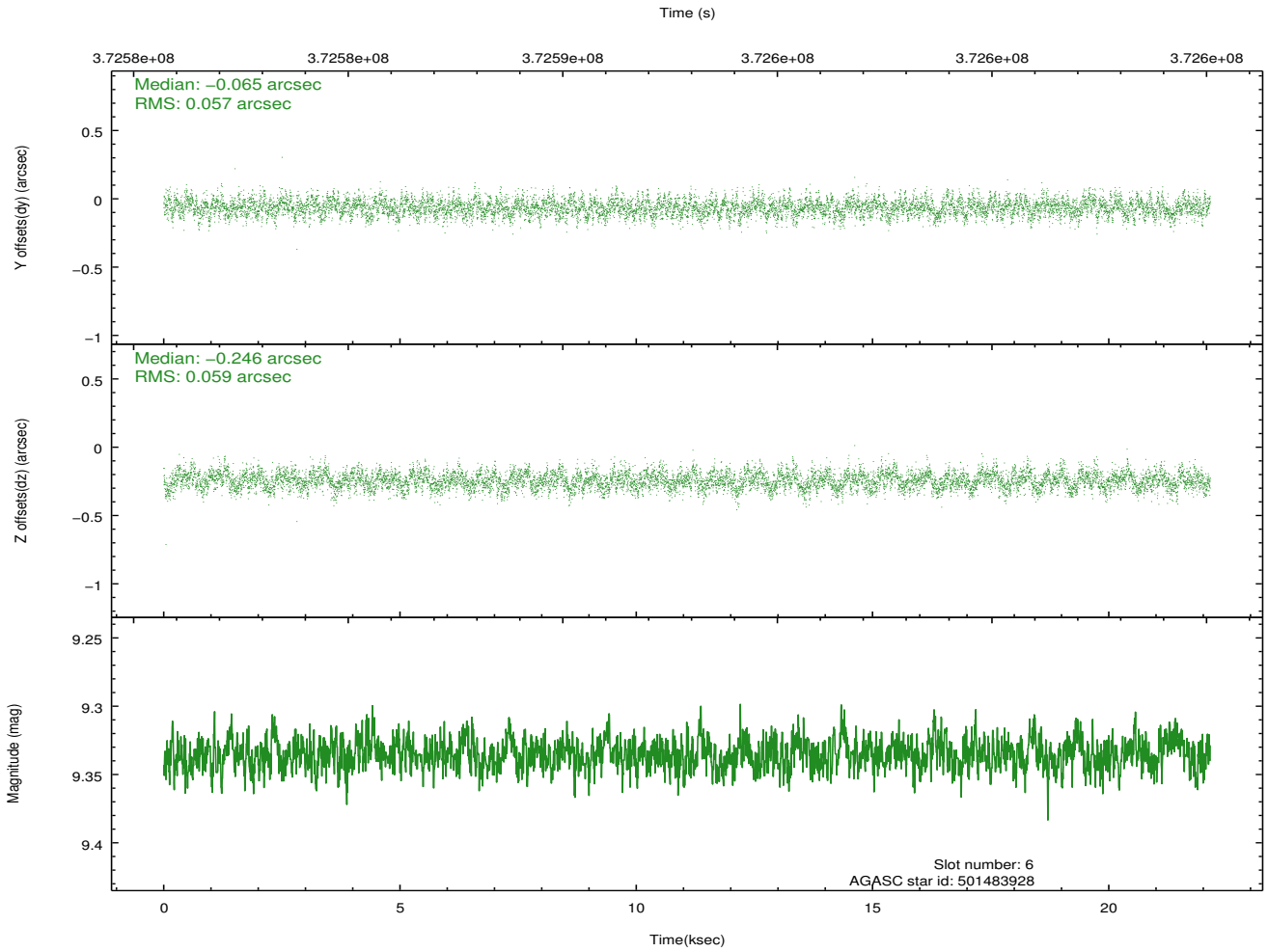
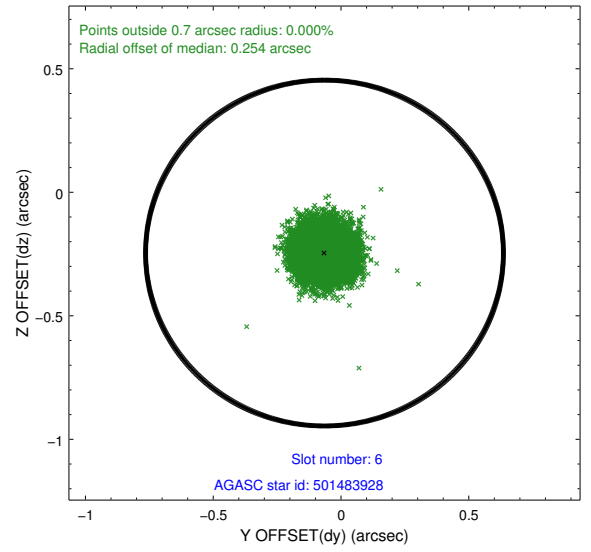
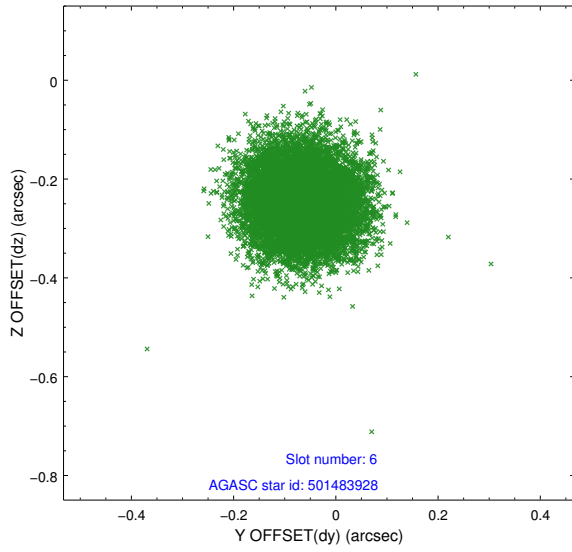
2.4.2 Slot 4



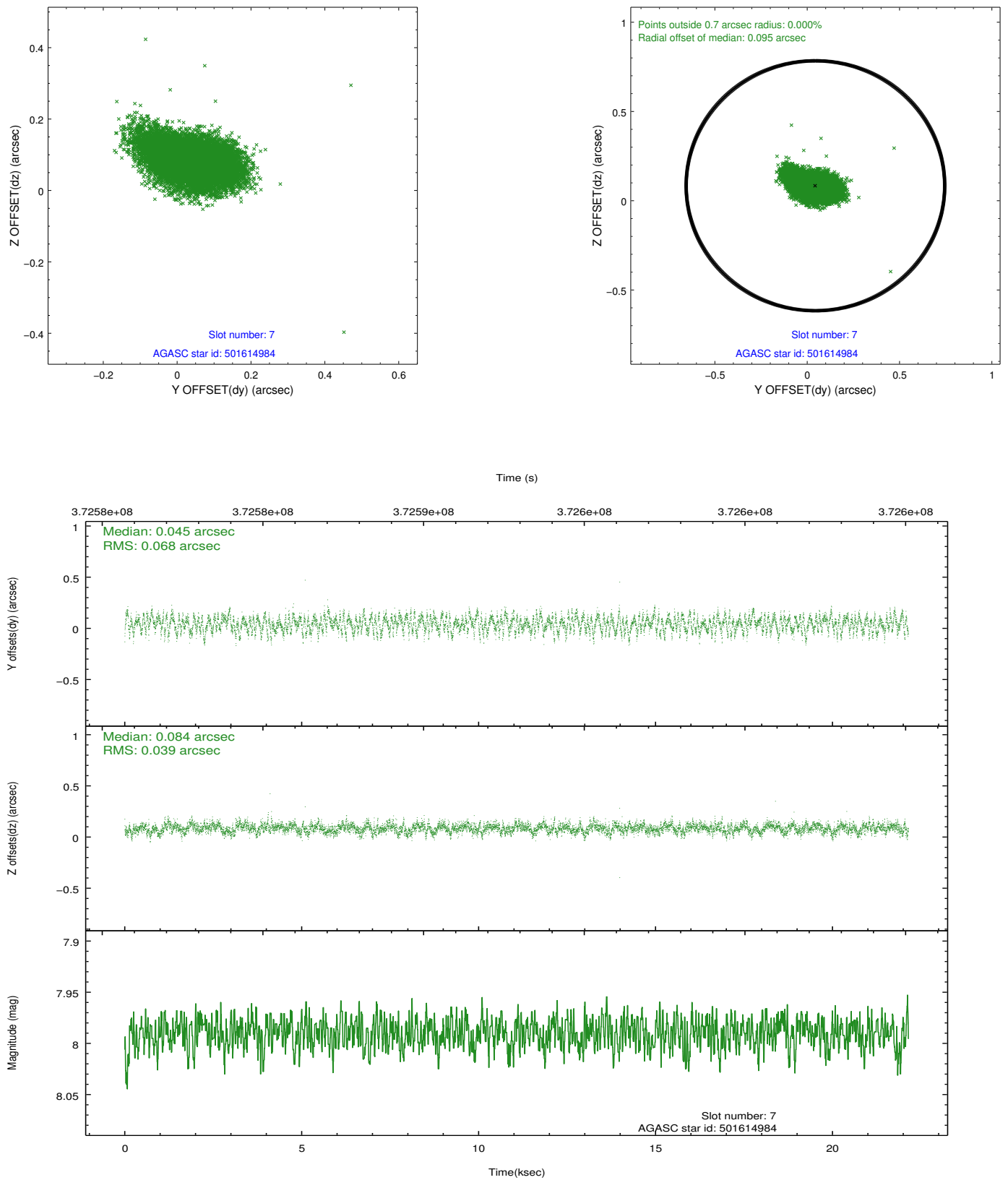
2.4.3 Slot 5



2.4.4 Slot 6

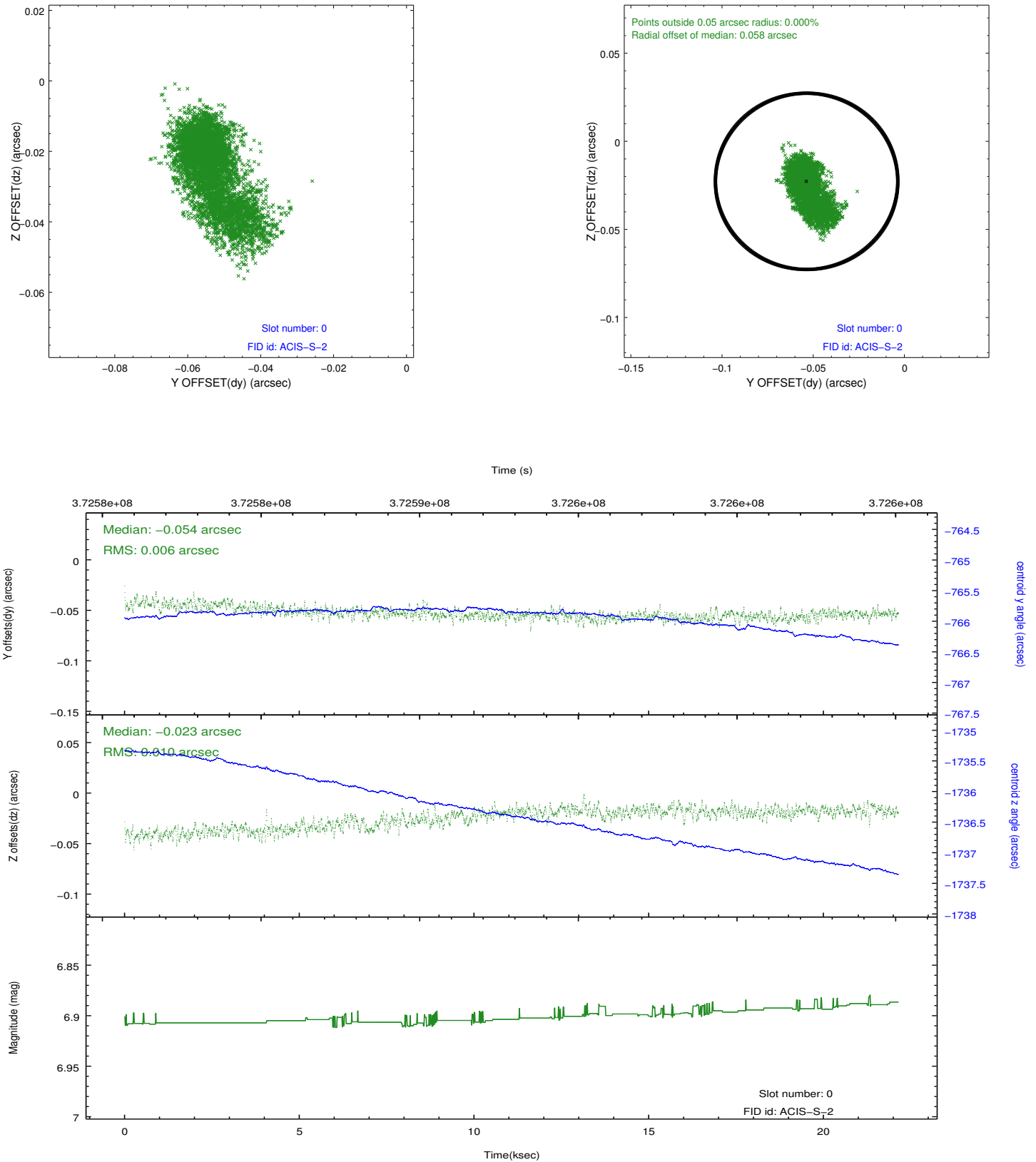


2.4.5 Slot 7

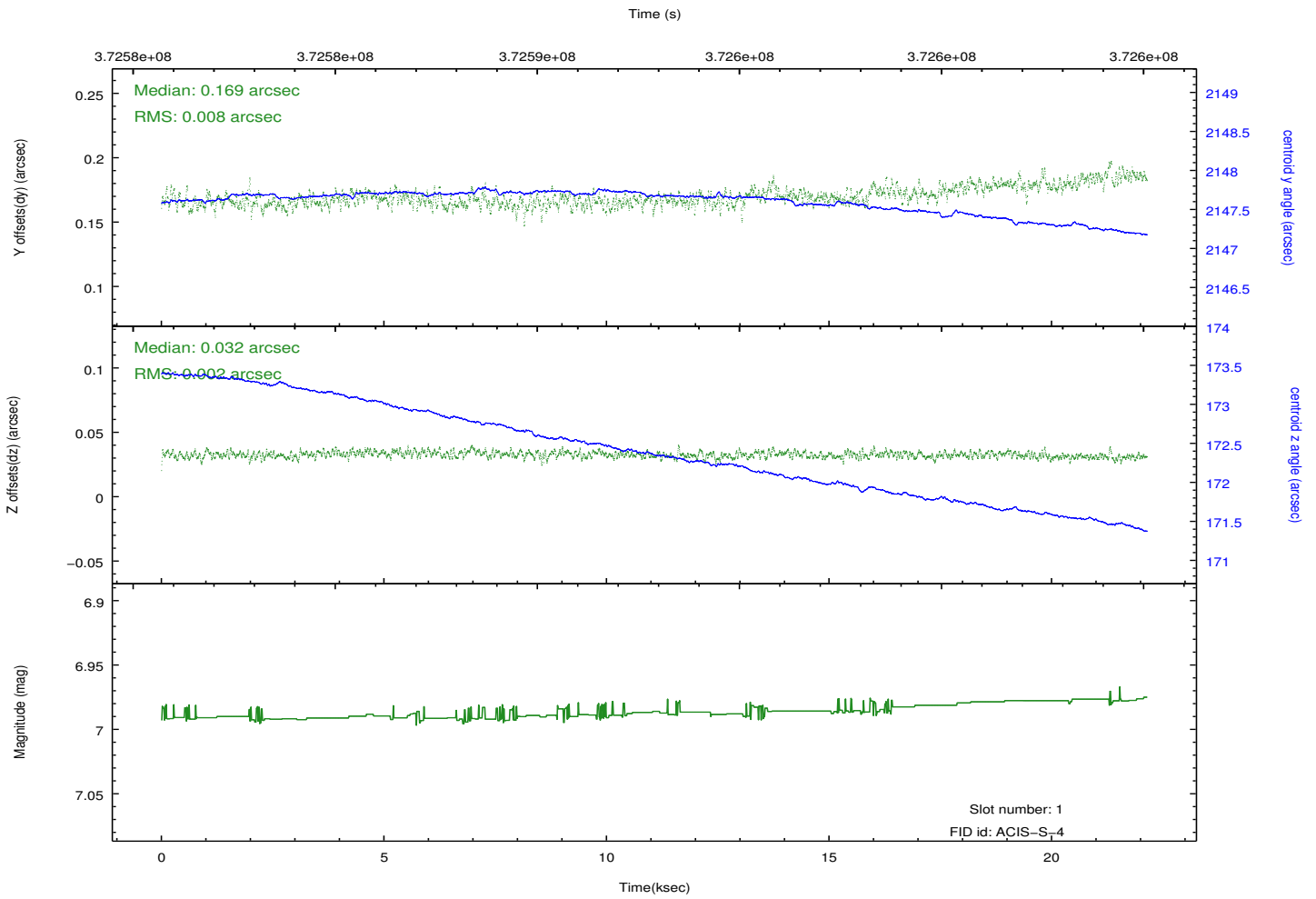
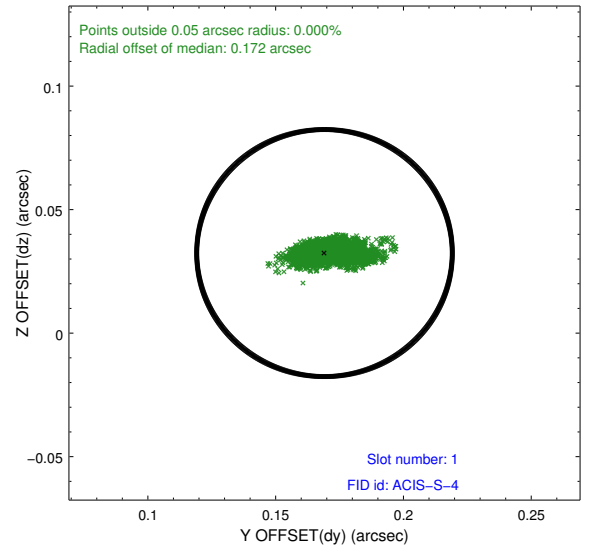
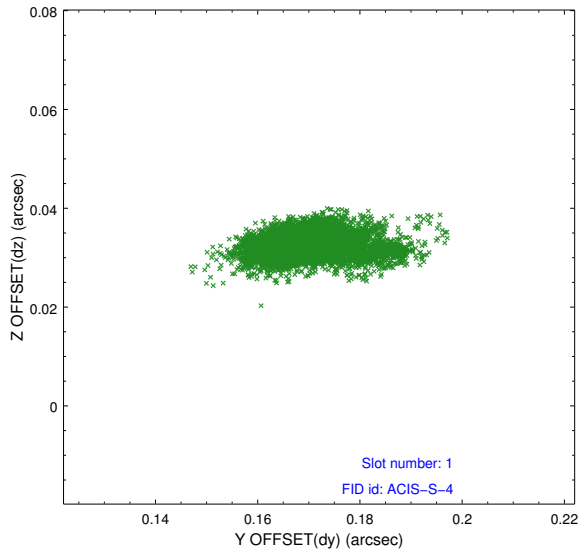


2.5 FID Slots

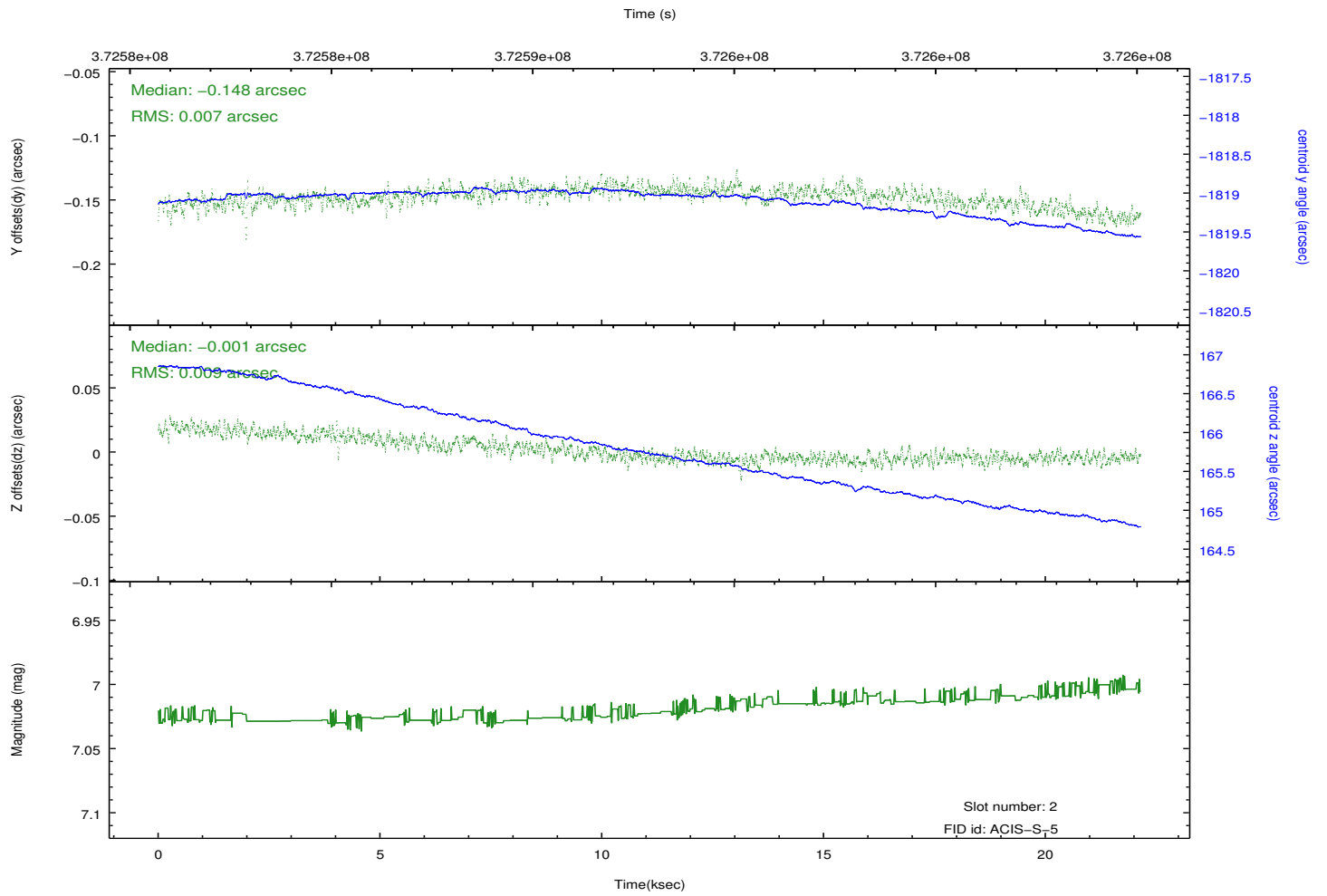
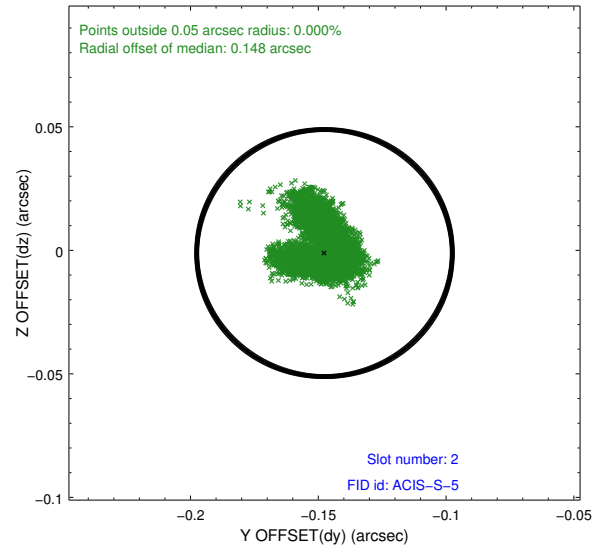
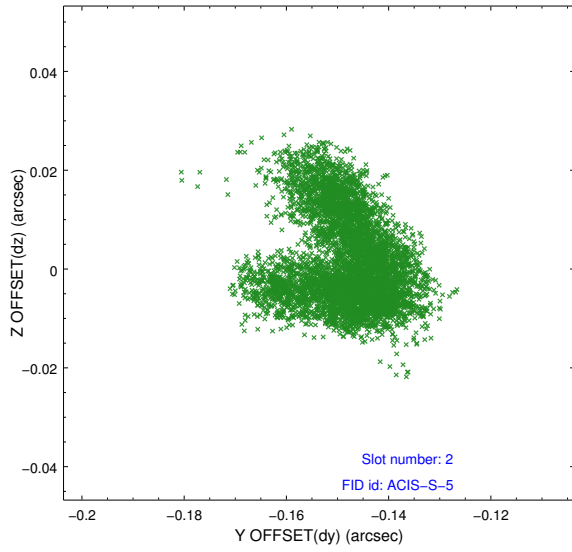
2.5.1 Slot 0



2.5.2 Slot 1



2.5.3 Slot 2



A Summary

A.1 Status

V&V Scientist	Jen Lauer
V&V Date (YYYY-MM-DD)	2012.06.19
V&V Edition	1
V&V Disposition and Status	OK
V&V Charge Time	22.140200170279

A.2 Comments