

# V&V Reference Report

## L2 ASCDS Version : 8.4.5

Observation 11820 - L2 Version 2  
Chandra X-Ray Center

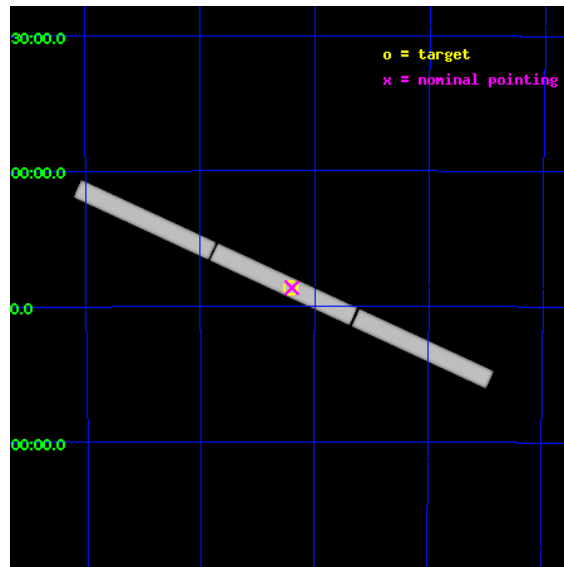
L2 Processing Date : Jun 28 2012

## Contents

<b>1</b>	<b>Front</b>	<b>2</b>
<b>2</b>	<b>OBI</b>	<b>3</b>
2.1	OBI . . . . .	3
2.1.1	Images . . . . .	3
2.1.2	Parameters . . . . .	4
2.1.3	Events . . . . .	4
2.2	Compared Parameters . . . . .	5
2.3	Aspect . . . . .	6
2.4	Star Slots . . . . .	9
2.4.1	Slot 3 . . . . .	9
2.4.2	Slot 4 . . . . .	10
2.4.3	Slot 5 . . . . .	11
2.4.4	Slot 6 . . . . .	12
2.4.5	Slot 7 . . . . .	13
2.5	FID Slots . . . . .	14
2.5.1	Slot 0 . . . . .	14
2.5.2	Slot 1 . . . . .	15
2.5.3	Slot 2 . . . . .	16
<b>3</b>	<b>Gratings</b>	<b>17</b>
3.1	LETG Arm . . . . .	17
<b>A</b>	<b>Summary</b>	<b>19</b>
A.1	Status . . . . .	19
A.2	Comments . . . . .	19

# 1 Front

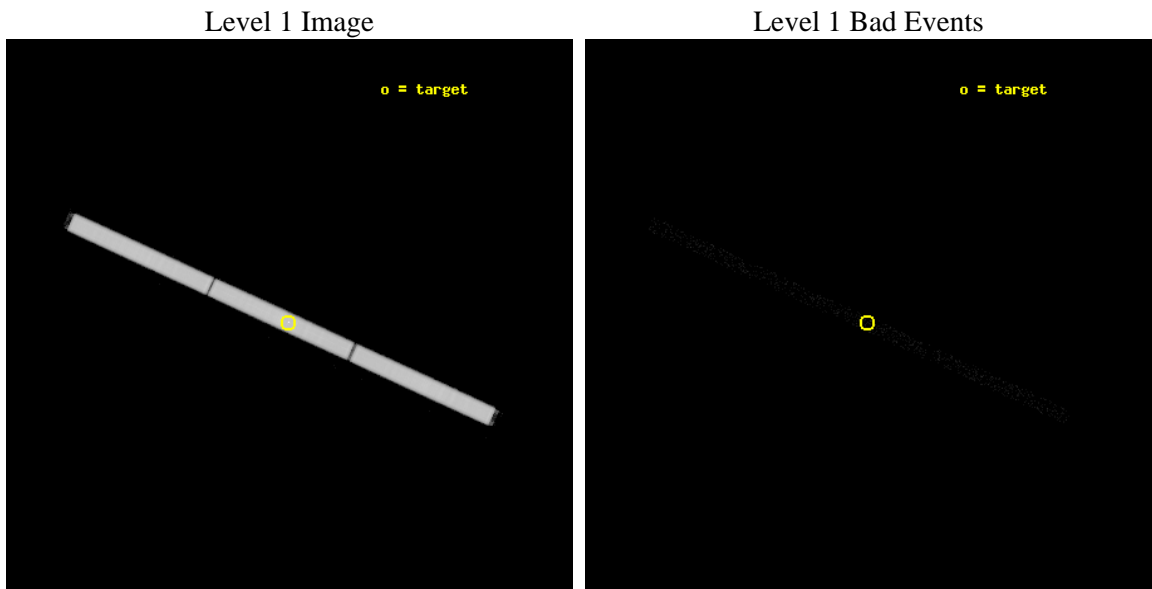
seq_num	501337	Sequence number
obs_id	11820	Observation id
title	Monitoring the spectral evolution of RXJ0720-3125 and determining its nature	Proposal title
observer	Dr Jelle Kaastra	Principal investigator
object	RX J0720-3125	Source name
ra_targ	110.104167	Observer's specified target RA [deg]
dec_targ	-31.430611	Observer's specified target Dec [deg]
ra_nom	110.09909998497	Nominal RA [deg]
dec_nom	-31.432502538336	Nominal Dec [deg]
roll_nom	204.53325702544	Nominal Roll [deg]
revision	2	Processing version of data
ontime	35182.229918599	[s]
livetime	34836.464215701	Overtime multiplied by DTCOR
l2events	2980253	Number of level 2 events



## 2 OBI

### 2.1 OBI

#### 2.1.1 Images



## 2.1.2 Parameters

obi_num	0	Obi number	sched_exp_time	35000.000000	[s] Scheduled observation exposure time
ascdsver	8.4.5	Processing system revision	ontime	35183.383045673	[s]
caldbver	4.5.0	&#160	l1events	3889763	Number of level 1 events
date	2012-06-28T21:10:54	Date and time of file creation			
revision	2	Processing version of data			

## 2.1.3 Events

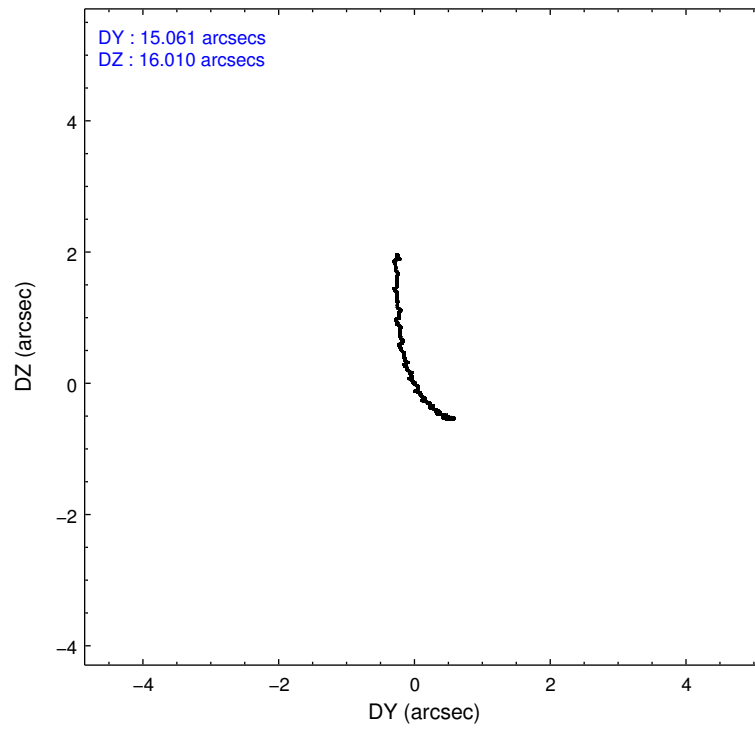
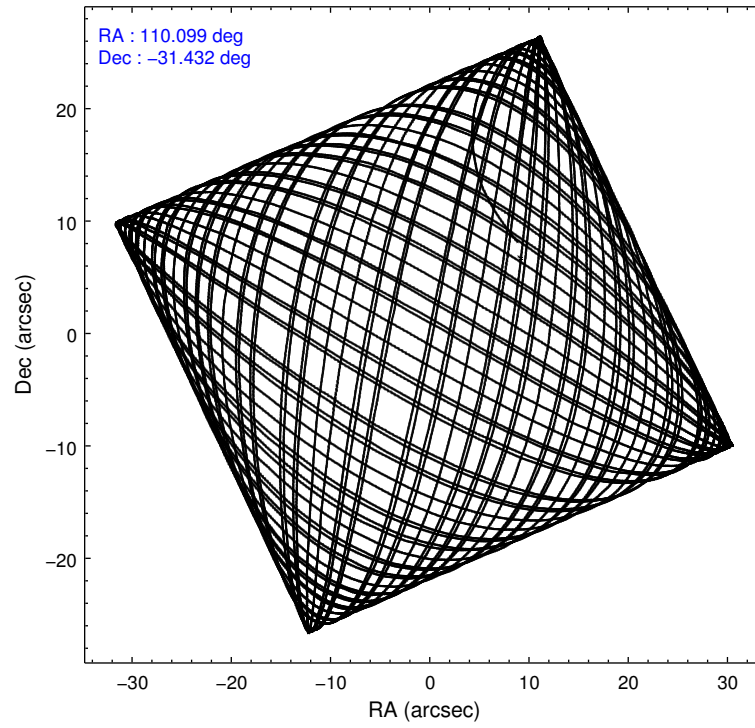
### Level 1 Events

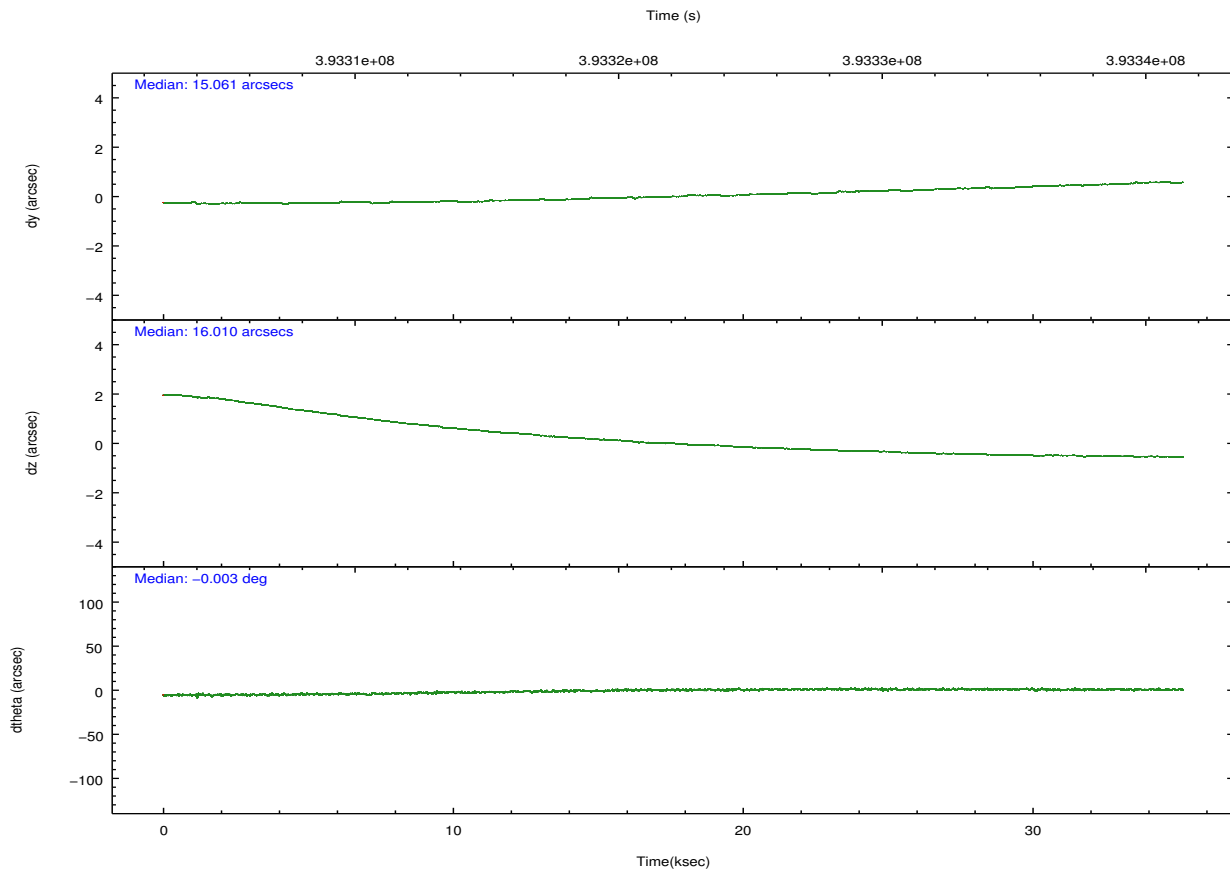
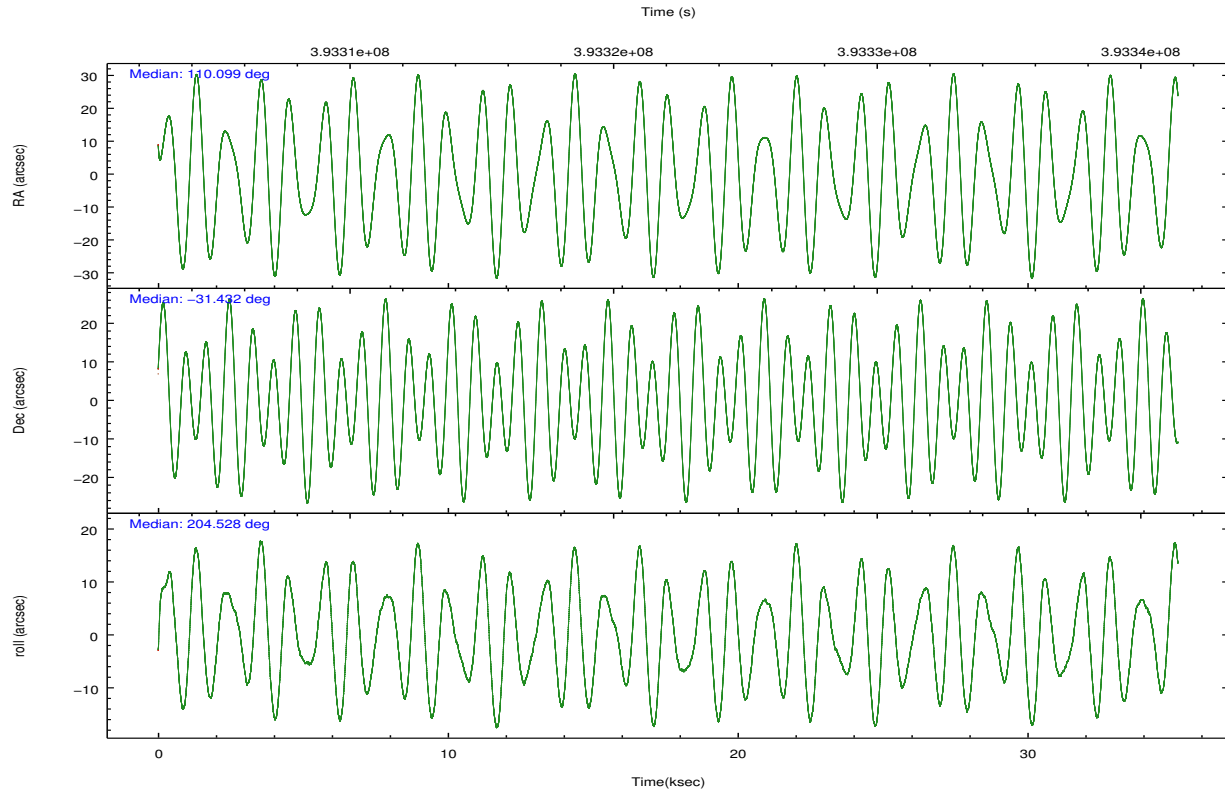
	<b>segment 1</b>	<b>segment 2</b>	<b>segment 3</b>
level 1 events	1294681	1296368	1298714
rejected events	26577	26965	26931
rejected %	2%	2%	2%

## 2.2 Compared Parameters

Parameter	Planned	Actual	Parameter	Planned	Actual
Instrument	HRC	HRC	Obspar format version number	7	7
Detector	HRC-S	HRC-S	Obspar file type	PREDICTED	ACTUAL
Grating	LETG	LETG	Obspar update status	NONE	UPDATED
Data mode	OBSERVING	OBSERVING			
Observation mode	POINTING	POINTING			
[deg] Pointing RA	110.117190	110.0990999849654			
[deg] Pointing Dec	-31.408342	-31.43250253833633			
[deg] Pointing Roll	204.475356	204.5332570254373			
[mm] SIM focus pos	-1.429586	-1.428180813131781			
[mm] SIM defocus	0.1037507710433287	0.1051558262725154			
[mm] SIM translation stage pos	250.455976	250.466033080201			
[mm] SIM translation stage offset	0	-0.01005468664627074			
[s] Observation start time (MET)	393304651.184000	393303687.57872			
Observation start date	2010-06-19T03:16:25	2010-06-19T03:01:27			
[s] Observation end time (MET)	393339651.184000	393340678.8056			
Observation end date	2010-06-19T12:59:45	2010-06-19T13:17:58			

## 2.3 Aspect





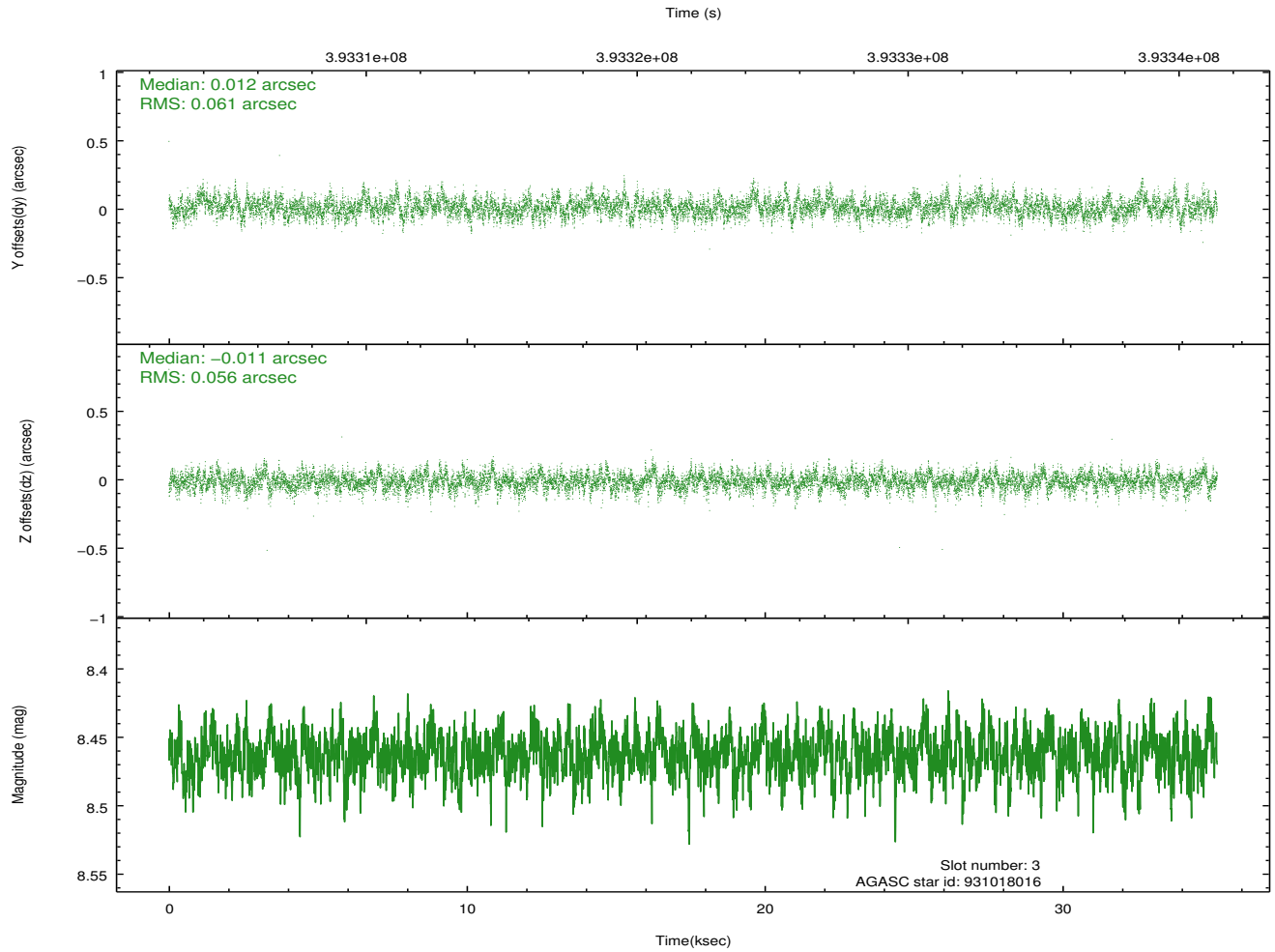
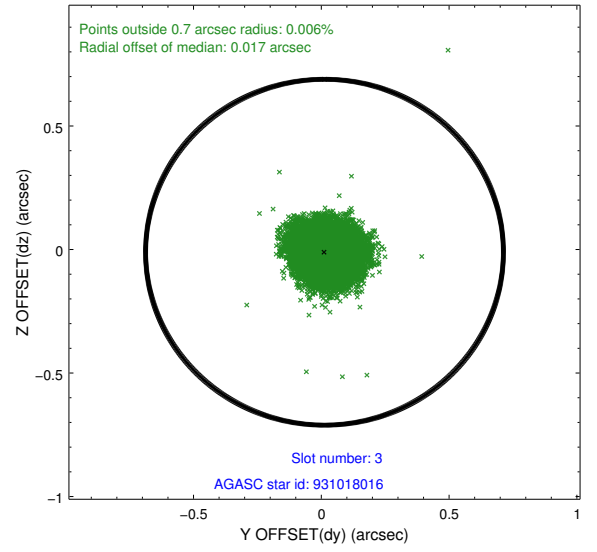
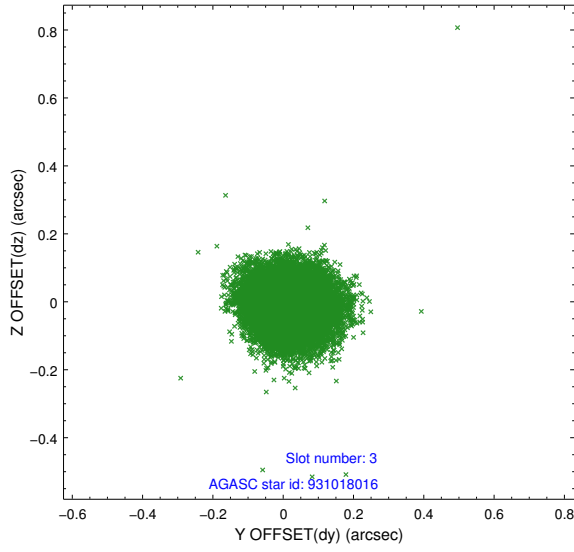
### Slot Statistics

slot	status	id	mag	n_pts	med_dy	med_dz	dr1	dr2	ra	dec	mean_y	mean_z
0	FID	HRC-S-1	7.04	8582	0.052	-0.195	0.019	0.032	0.000000	0.000000	-1169.54	-465.19
1	FID	HRC-S-2	7.02	8581	0.236	-0.112	0.022	0.034	0.000000	0.000000	1230.19	-457.81
2	FID	HRC-S-3	7.04	8581	0.102	0.006	0.027	0.040	0.000000	0.000000	-1172.07	564.48
3	GUIDE	931018016	8.46	17157	0.012	-0.011	0.087	0.142	109.684535	-31.226562	942.79	-1144.51
4	GUIDE	931025288	8.45	17158	0.046	-0.084	0.097	0.155	109.511084	-30.937793	1004.43	-2312.15
5	GUIDE	931160352	8.62	17152	-0.022	0.002	0.090	0.147	110.268138	-30.864891	-1234.36	-1587.23
6	GUIDE	931163512	8.45	17157	-0.126	0.030	0.080	0.131	110.894384	-31.299941	-2333.92	643.10
7	GUIDE	931533624	8.81	17149	0.087	0.065	0.078	0.128	109.647585	-32.151630	2412.82	1846.00

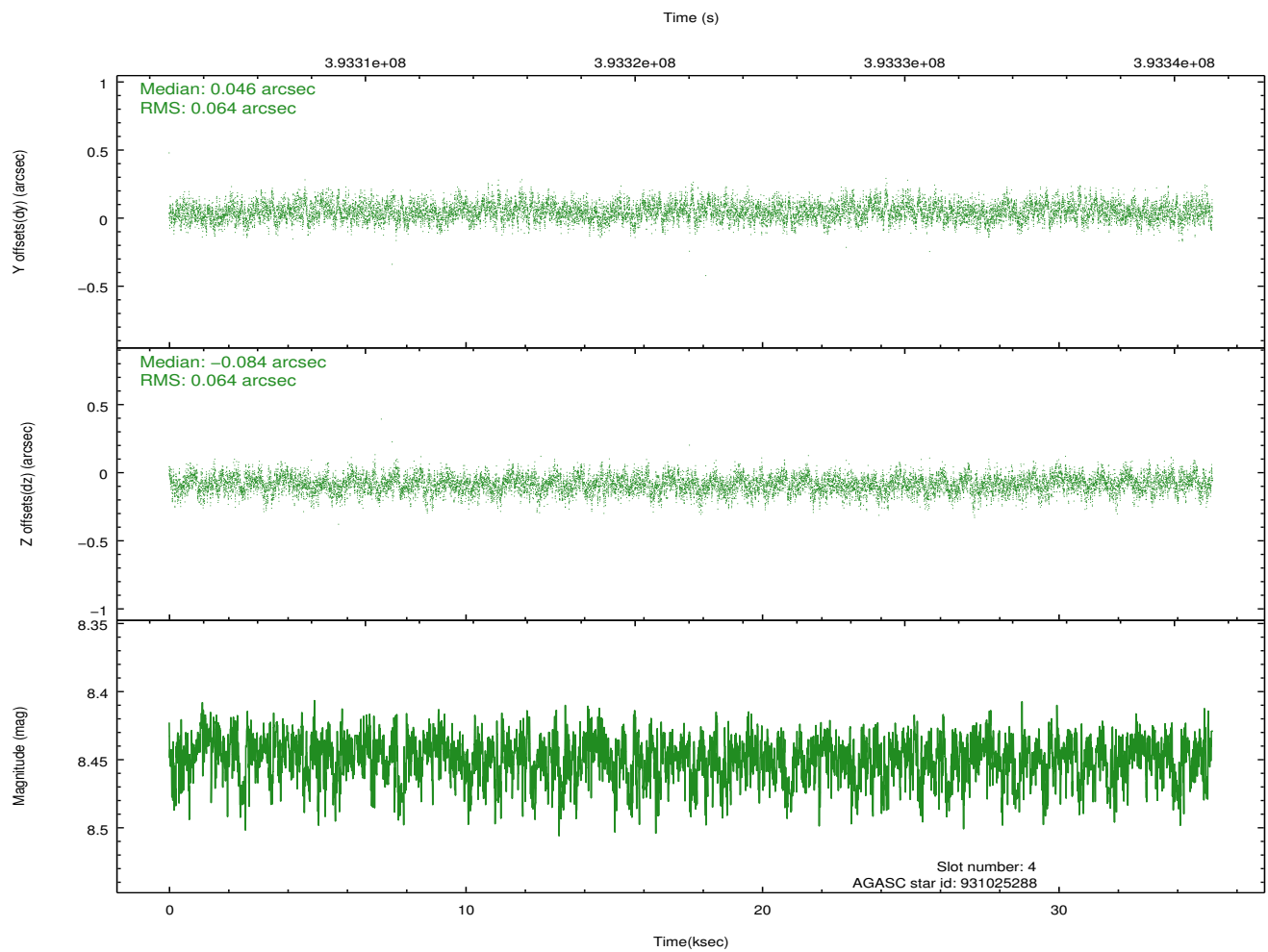
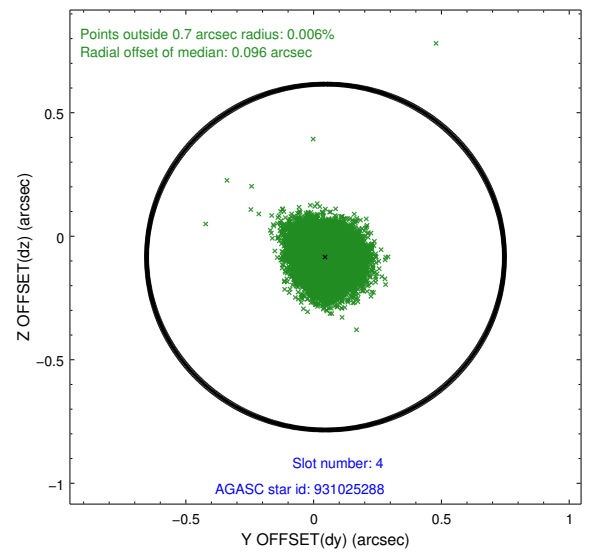
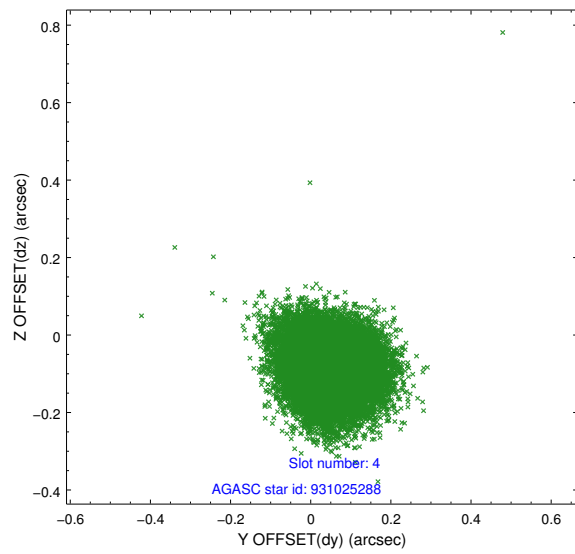
∞

## 2.4 Star Slots

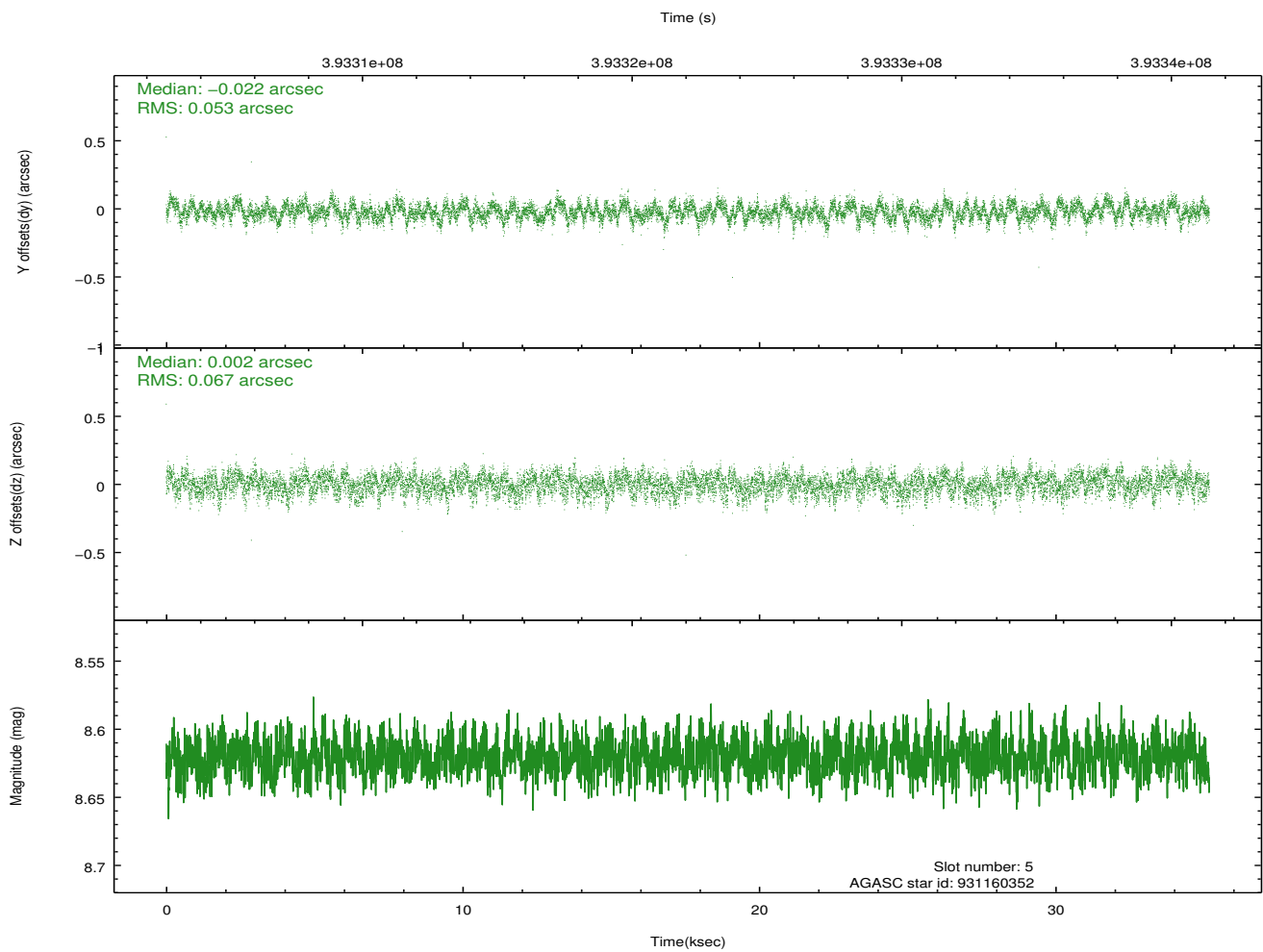
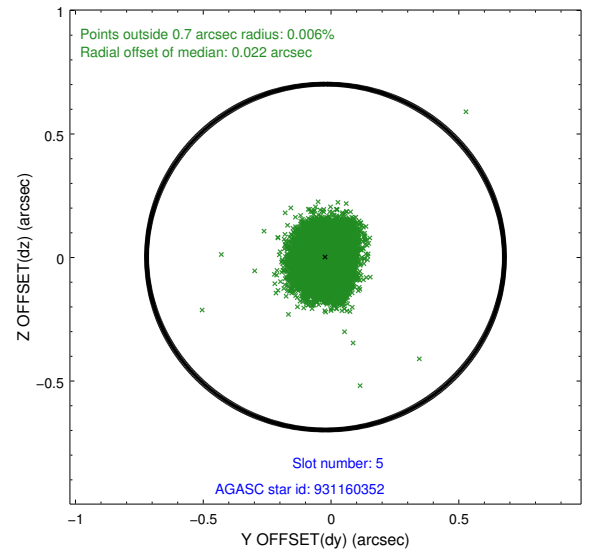
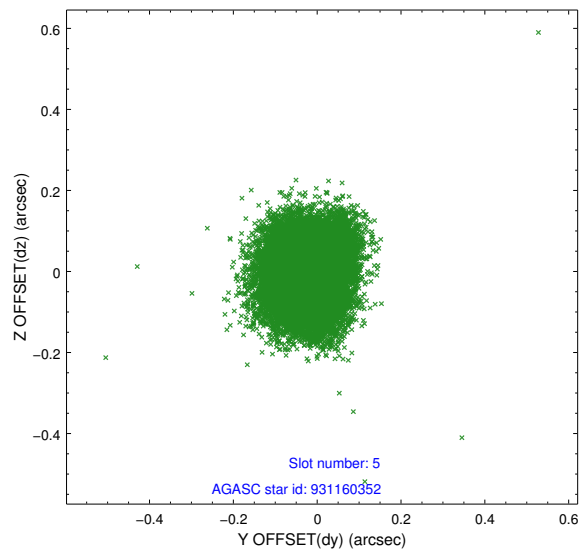
### 2.4.1 Slot 3



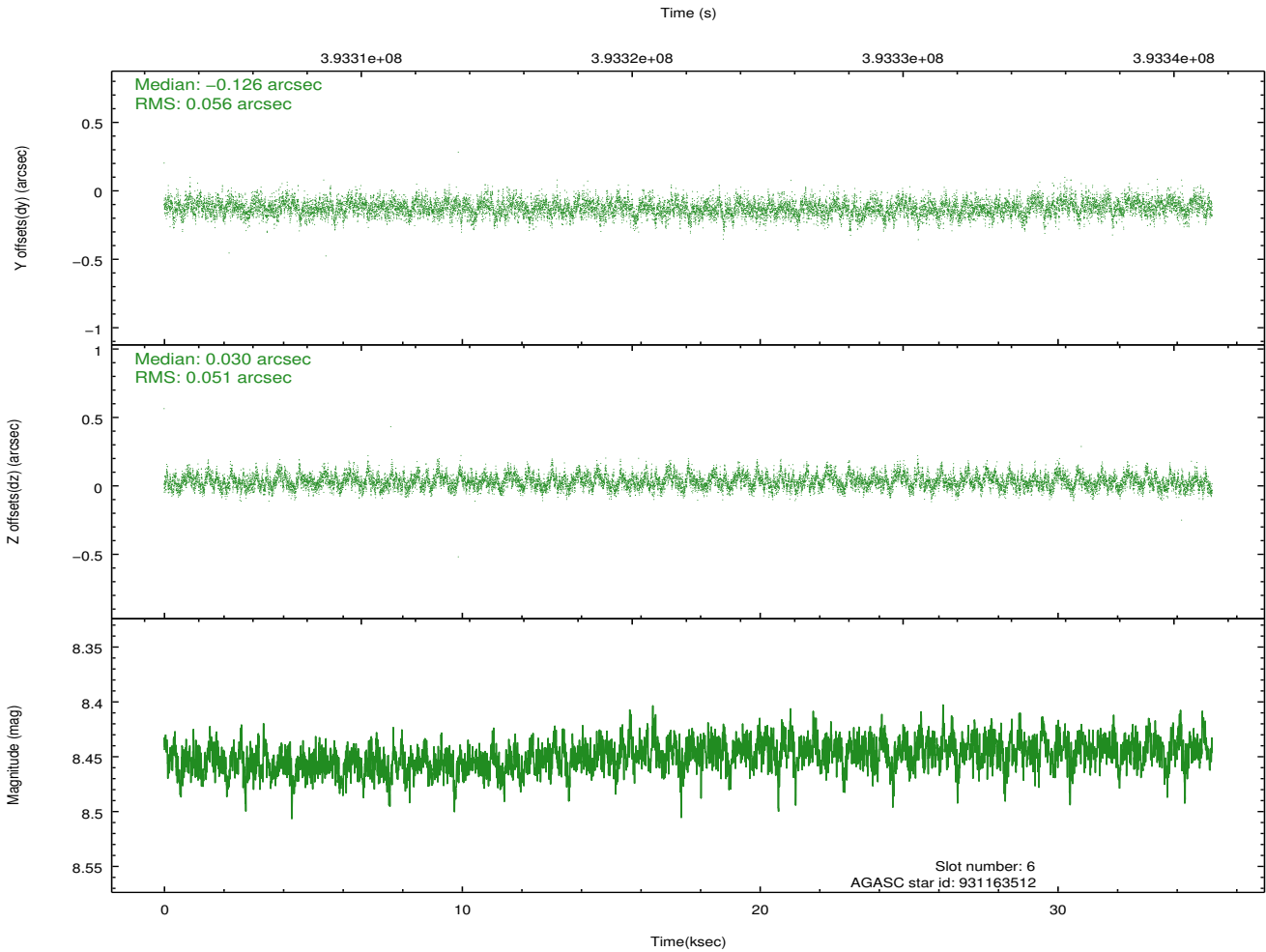
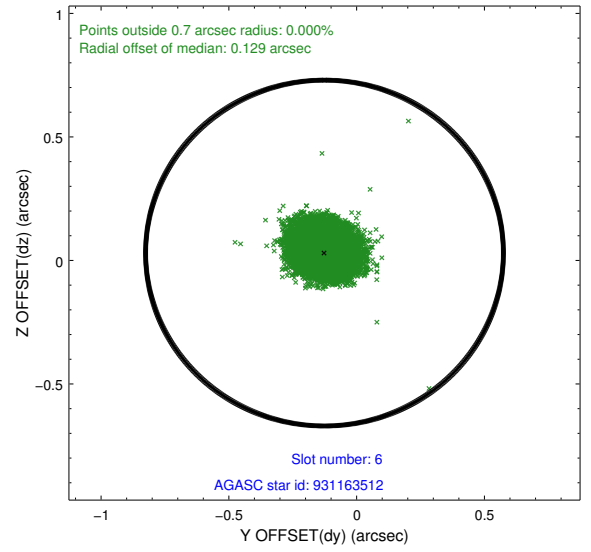
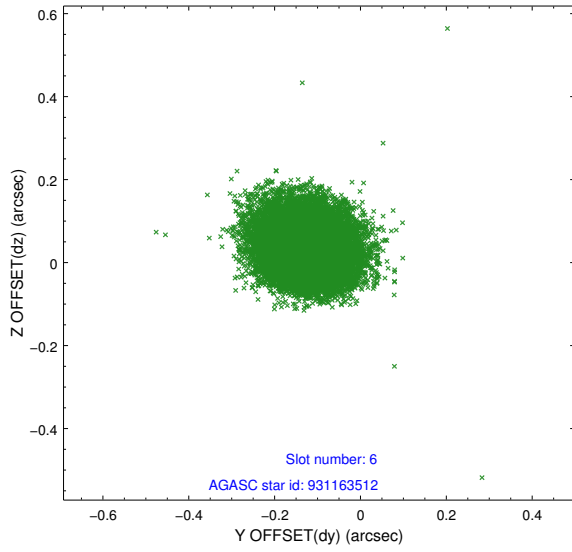
## 2.4.2 Slot 4



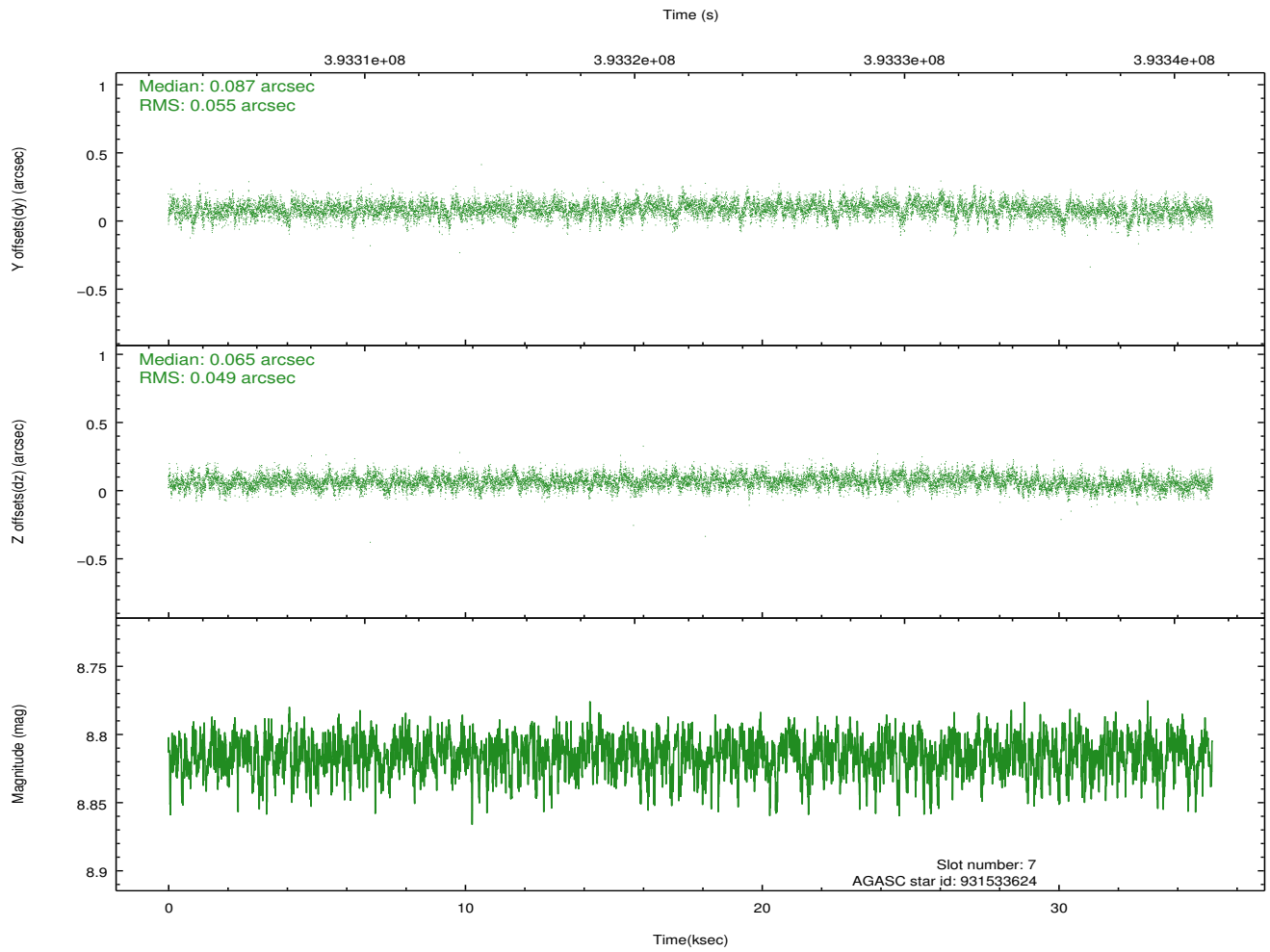
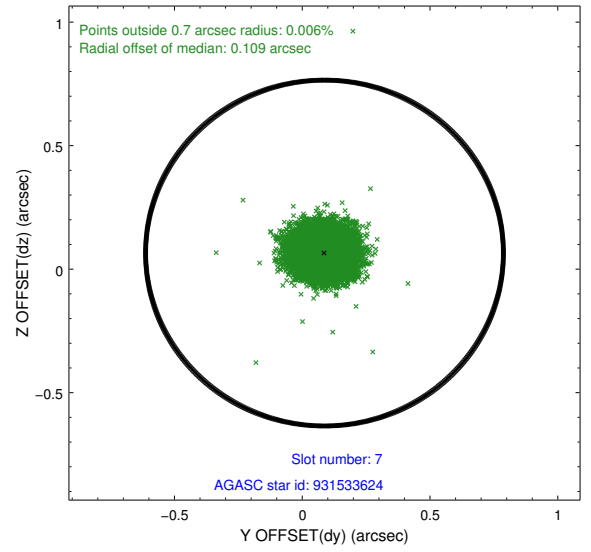
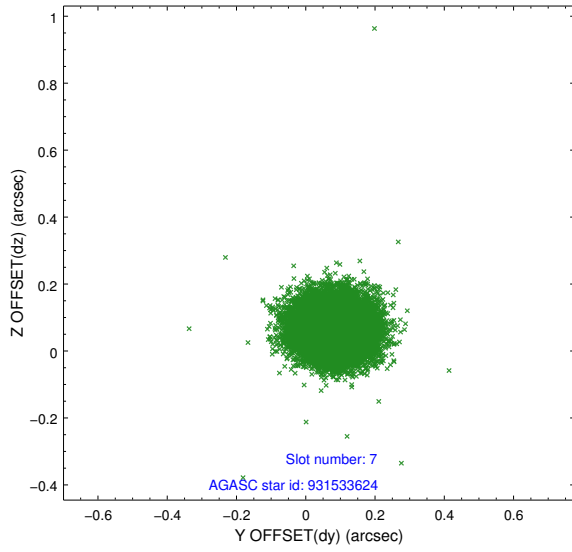
### 2.4.3 Slot 5



### 2.4.4 Slot 6

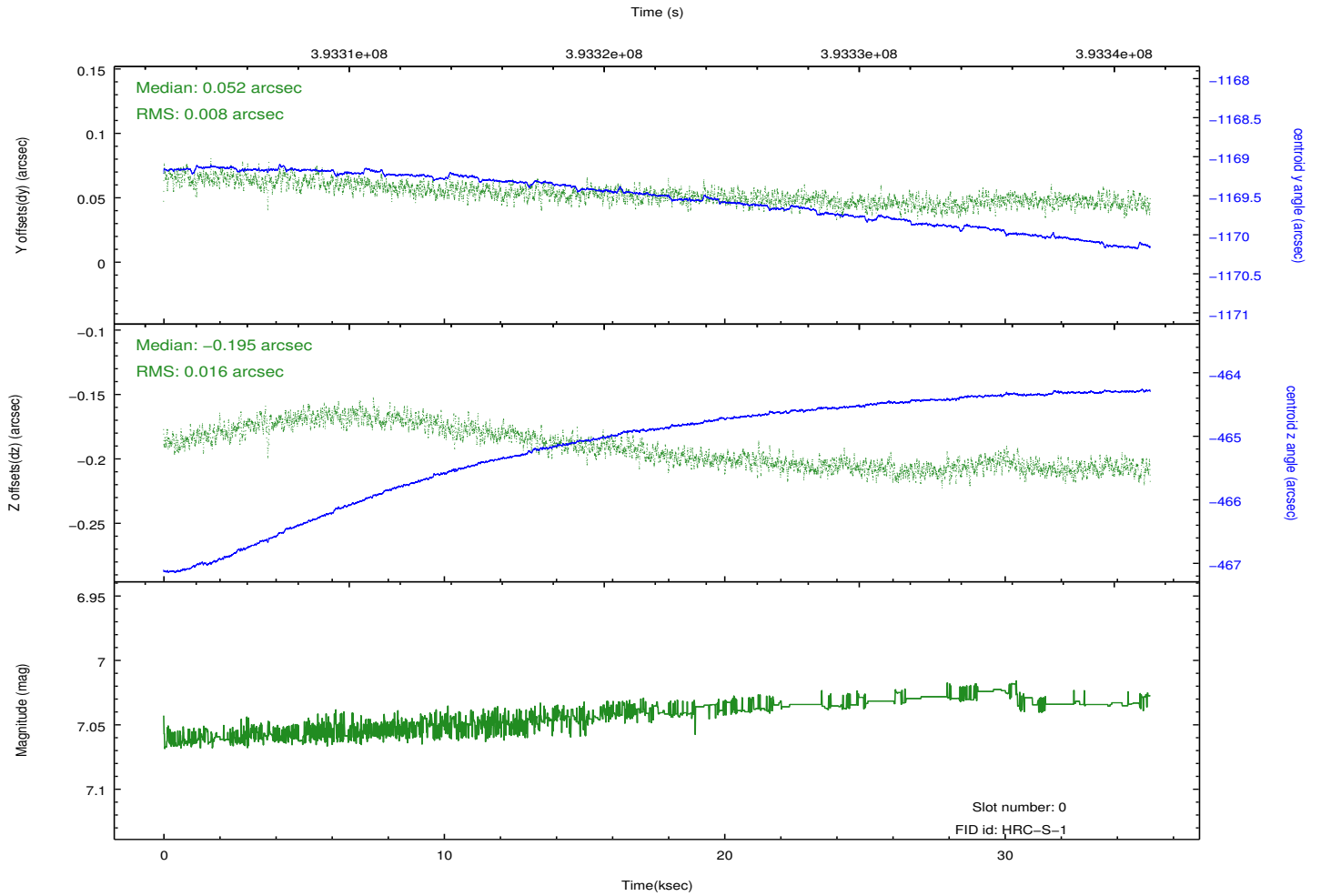
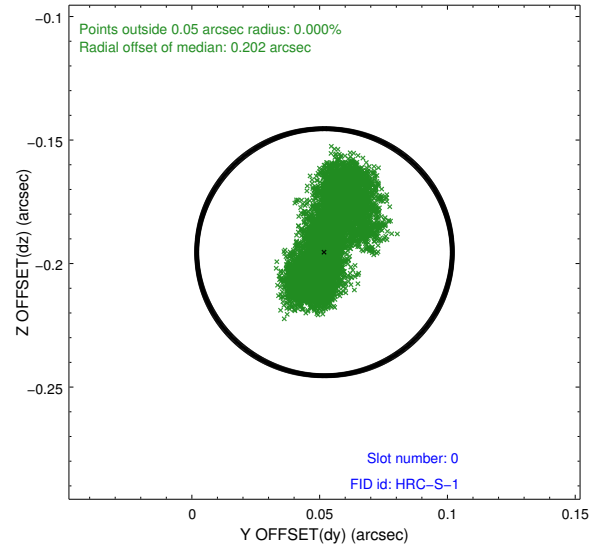
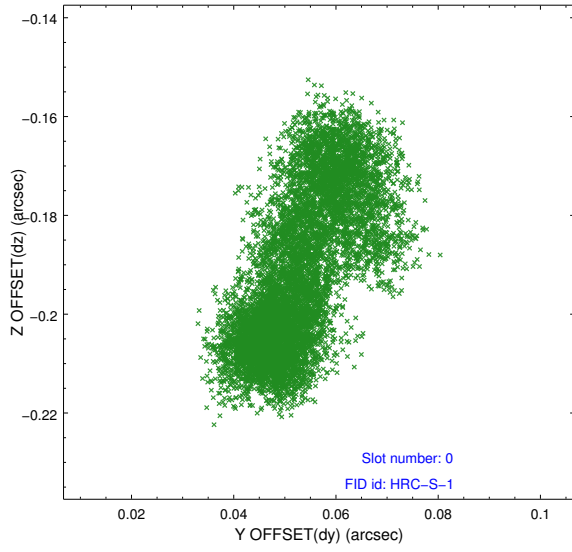


### 2.4.5 Slot 7

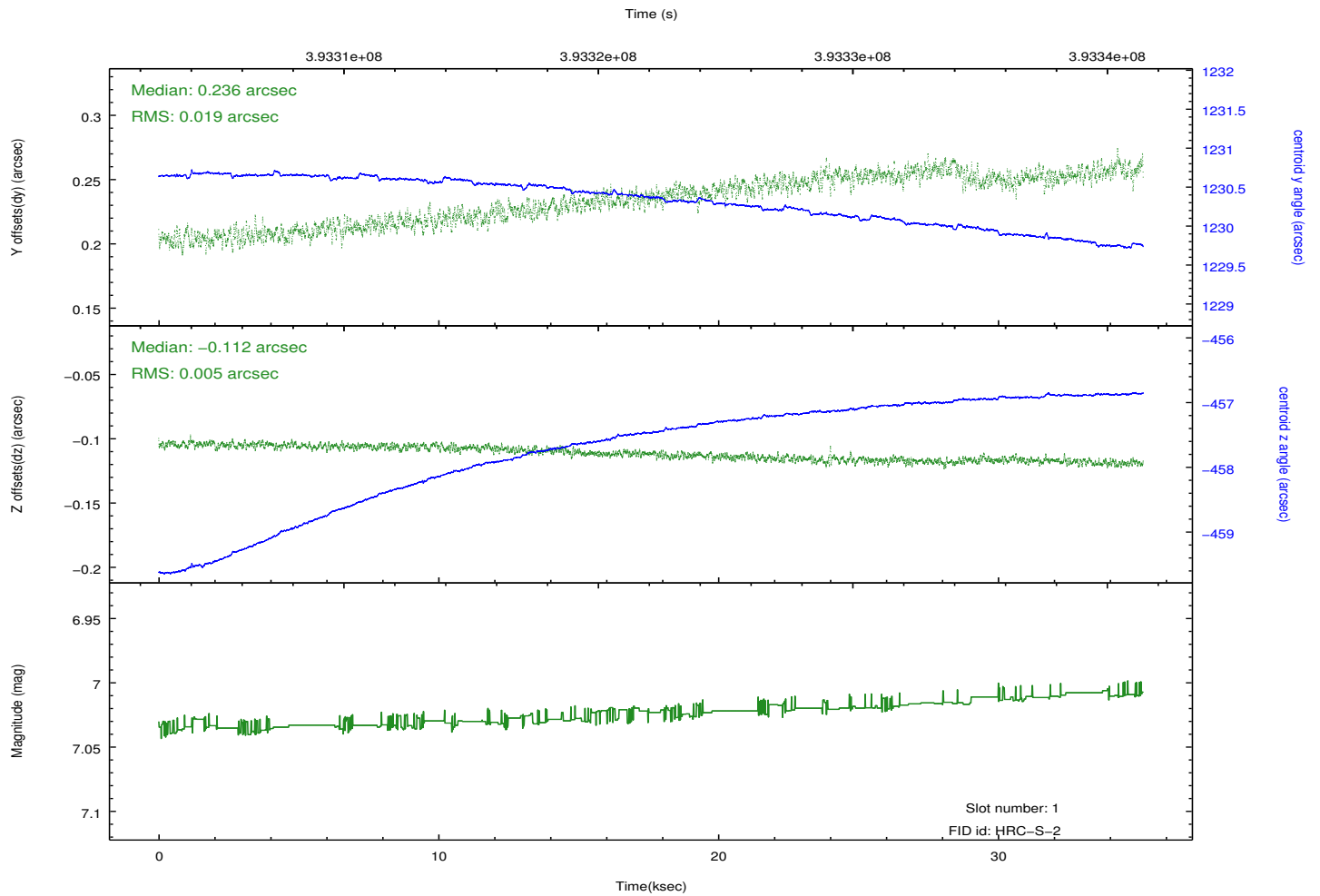
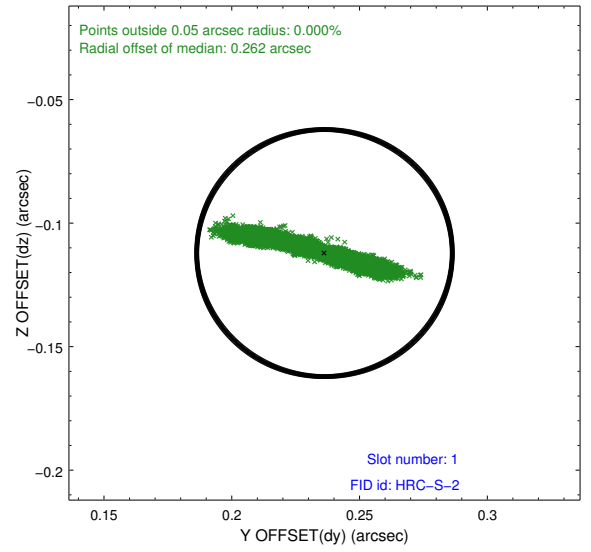
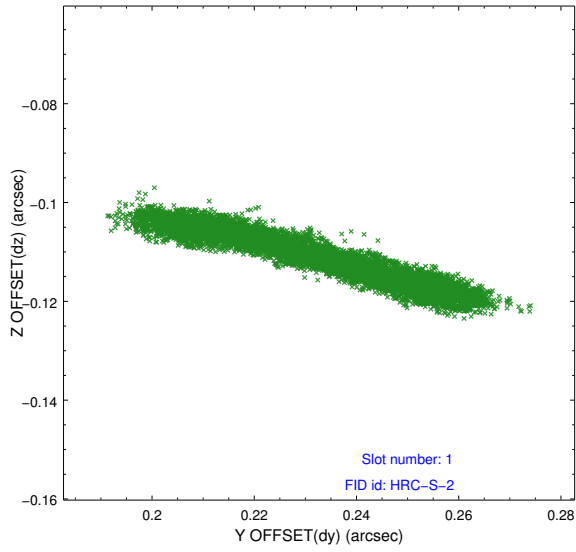


## 2.5 FID Slots

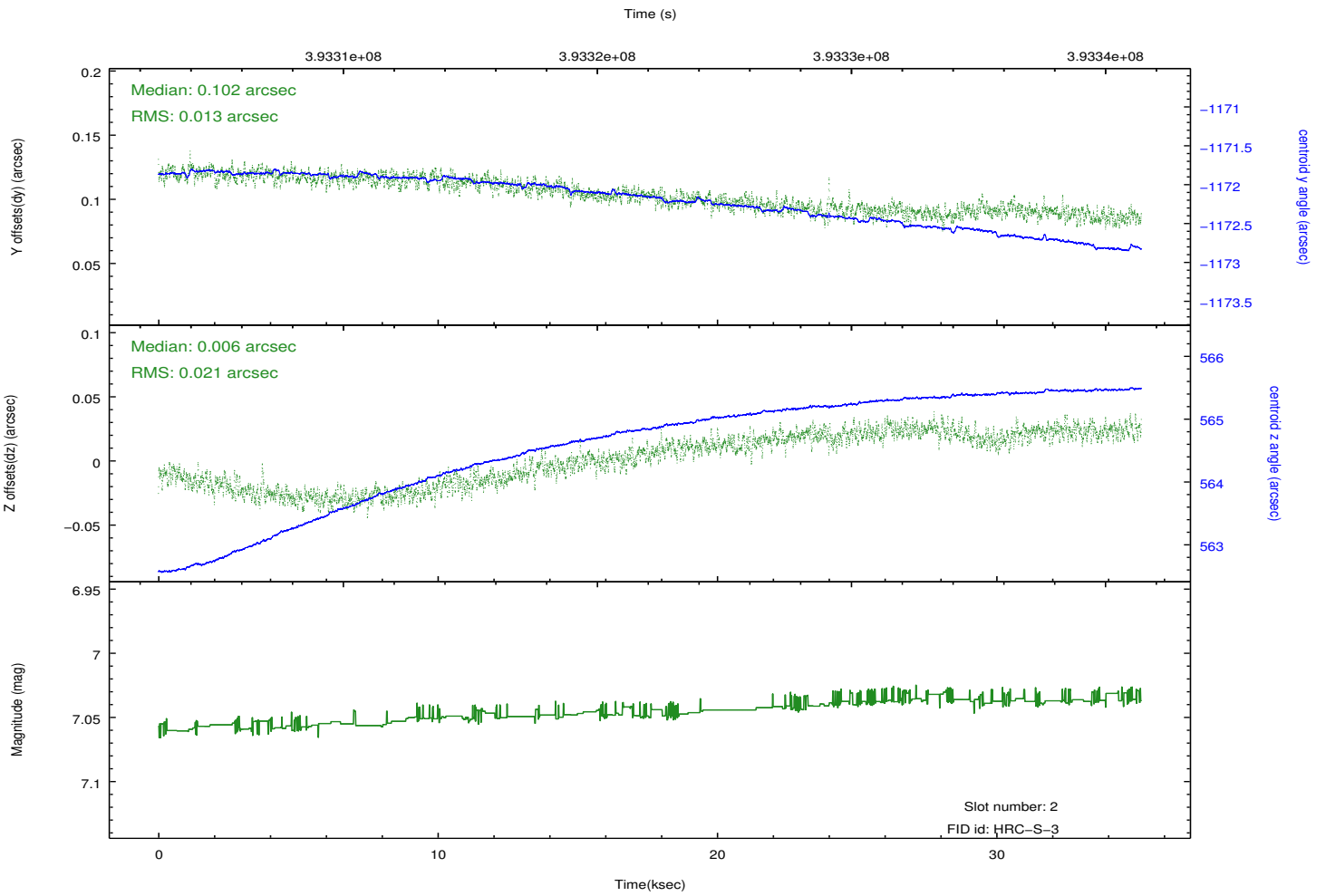
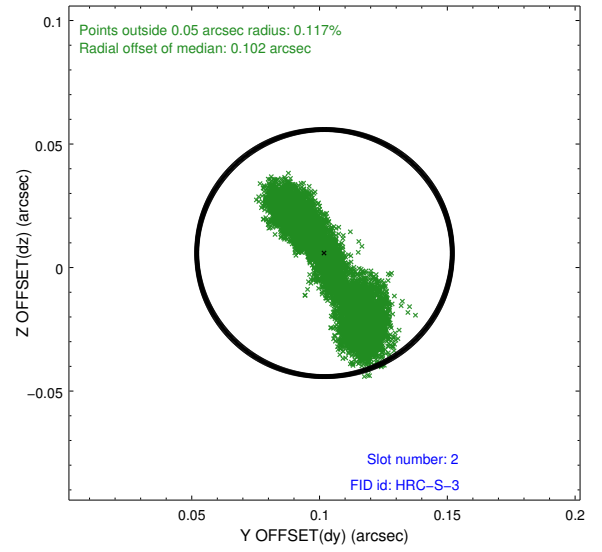
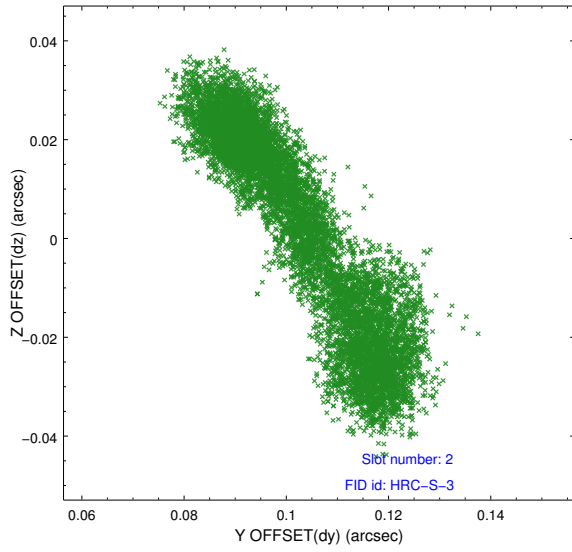
### 2.5.1 Slot 0



## 2.5.2 Slot 1

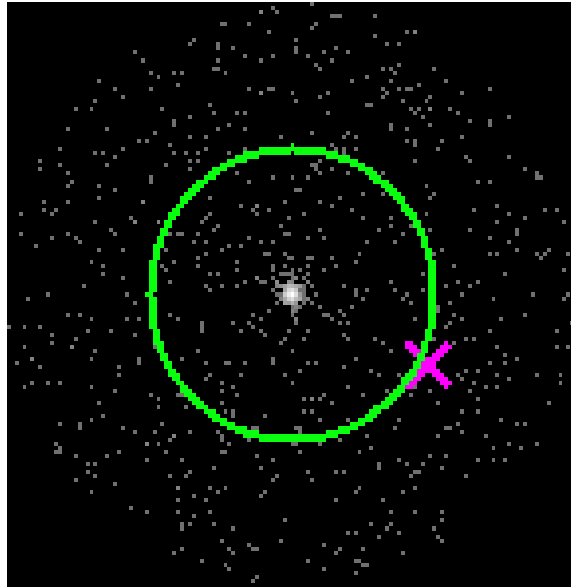


### 2.5.3 Slot 2

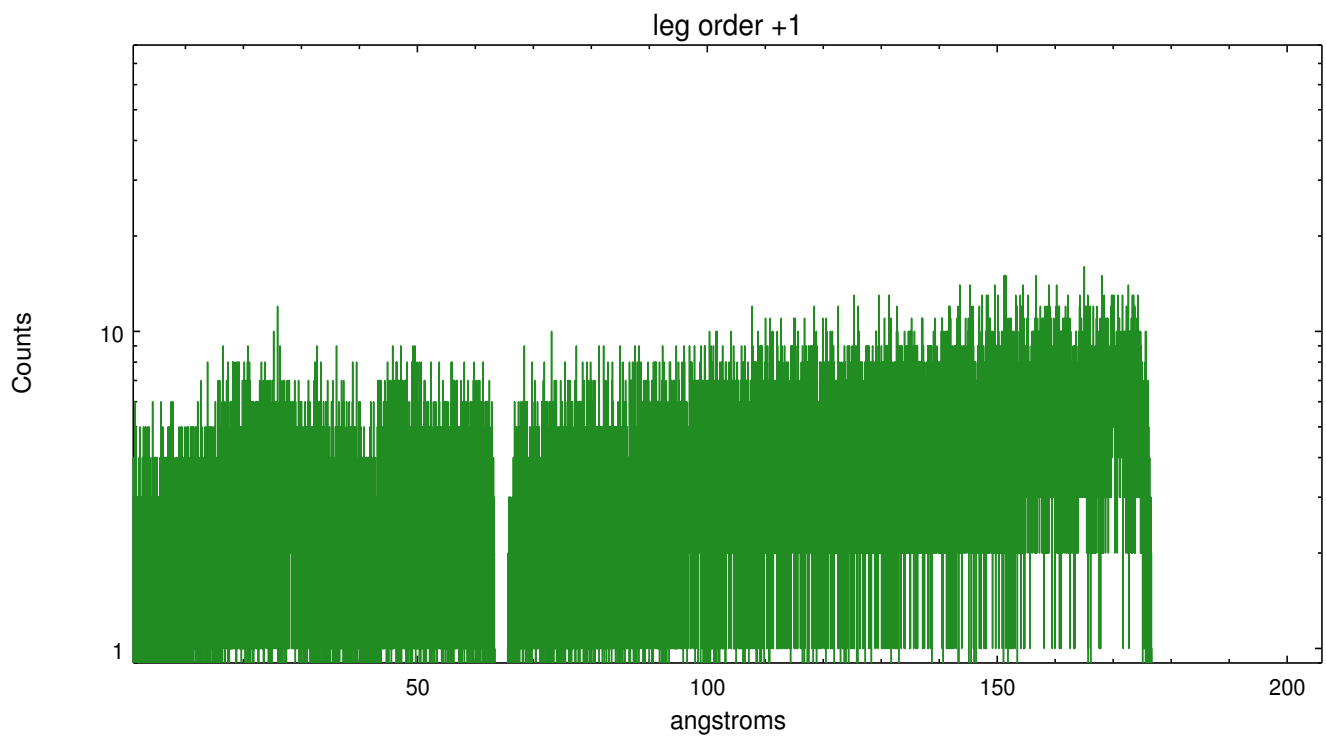
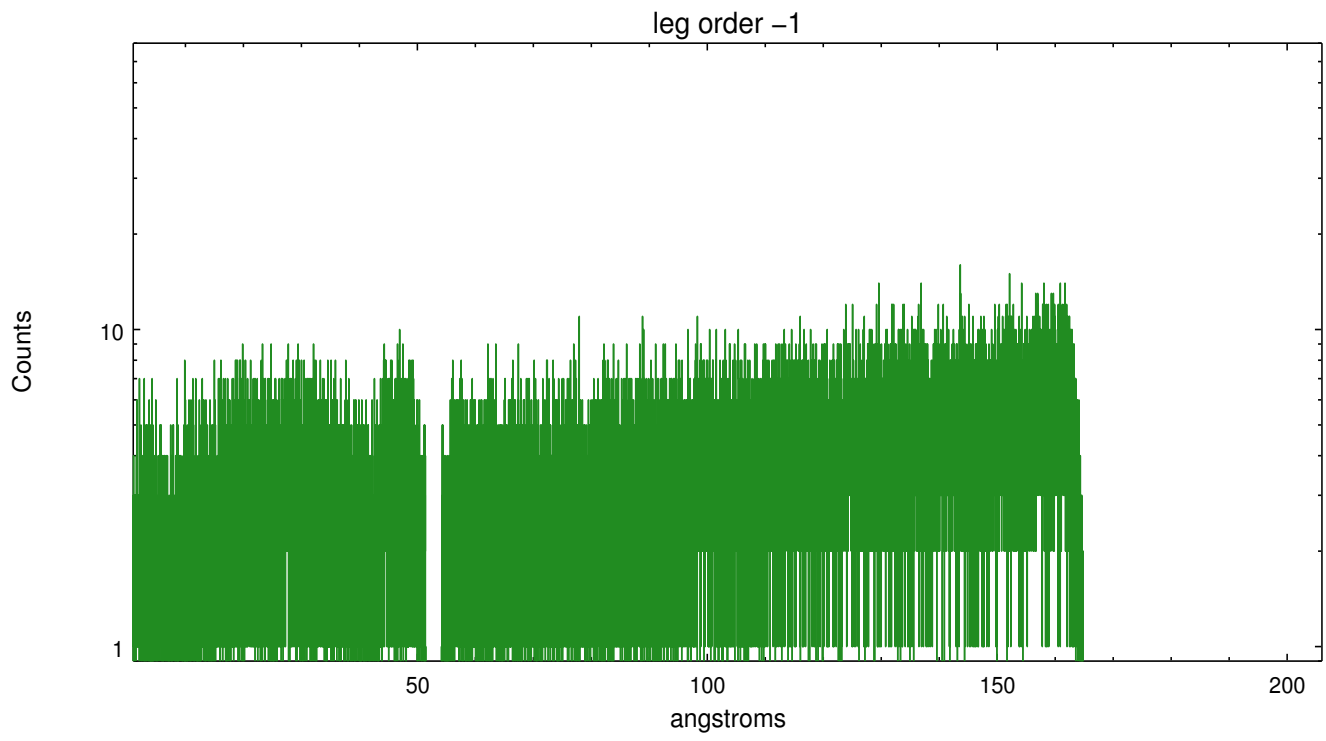


### 3 Gratings

#### 3.1 LETG Arm



LETG Zero Order



## A Summary

### A.1 Status

V&V Scientist	Joy Nichols
V&V Date (YYYY-MM-DD)	2012.07.02
V&V Edition	1
V&V Disposition and Status	OK
V&V Charge Time	35.182229922771

### A.2 Comments