

V&V Reference Report

L2 ASCDS Version : 8.4.5

Observation 13790 - L2 Version 2
Chandra X-Ray Center

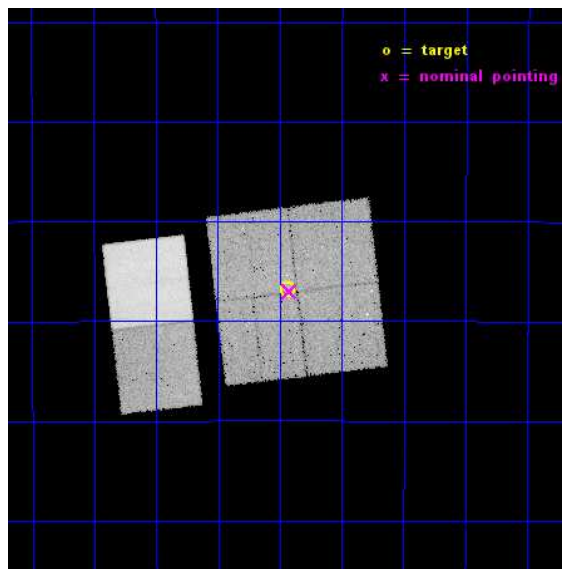
L2 Processing Date : Nov 28 2014

Contents

1	Front	2
2	OBI	3
2.1	OBI	3
2.1.1	Images	3
2.1.2	Bias	3
2.1.3	Parameters	4
2.1.4	Events	4
2.2	Compared Parameters	5
2.3	Aspect	6
2.4	Star Slots	9
2.4.1	Slot 3	9
2.4.2	Slot 4	10
2.4.3	Slot 5	11
2.4.4	Slot 6	12
2.4.5	Slot 7	13
2.5	FID Slots	14
2.5.1	Slot 0	14
2.5.2	Slot 1	15
2.5.3	Slot 2	16
A	Summary	17
A.1	Status	17
A.2	Comments	17

1 Front

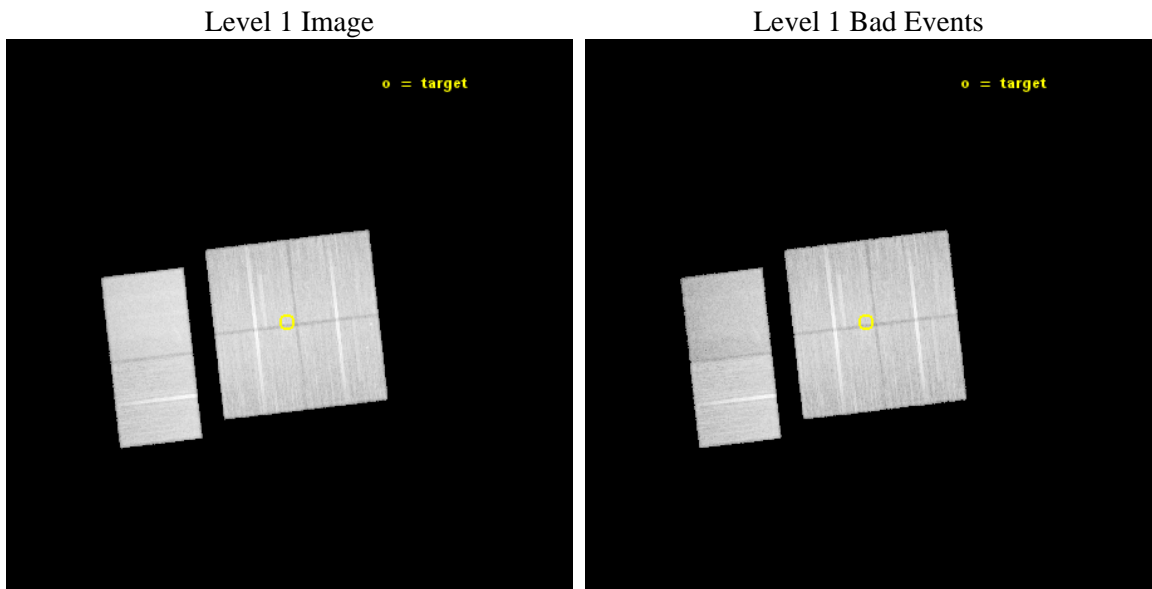
seq_num	501622	Sequence number
obs_id	13790	Observation id
title	Is HESS J1741-302 truly dark?	Proposal title
observer	Dr Oleg Kargaltsev	Principal investigator
object	HESS J1741-302A	Source name
dtcycle	0	
cycle	P	events from which exps? Prim/Second/Both
ra_targ	265.358333	Observer's specified target RA [deg]
dec_targ	-30.112778	Observer's specified target Dec [deg]
ra_nom	265.35573932695	Nominal RA [deg]
dec_nom	-30.116926618596	Nominal Dec [deg]
roll_nom	263.33284675848	Nominal Roll [deg]
revision	2	Processing version of data
ontime	44969.543783605	Sum of GTIs [s]
livetime	44400.112342809	Livetime [s]
ontime0	44966.179673314	Sum of GTIs [s]
ontime1	44969.461833119	Sum of GTIs [s]
ontime2	44963.020783007	Sum of GTIs [s]
ontime3	44969.543783605	Sum of GTIs [s]
ontime6	44963.117891908	Sum of GTIs [s]
ontime7	44966.343853295	Sum of GTIs [s]
l2events	248754	Number of level 2 events



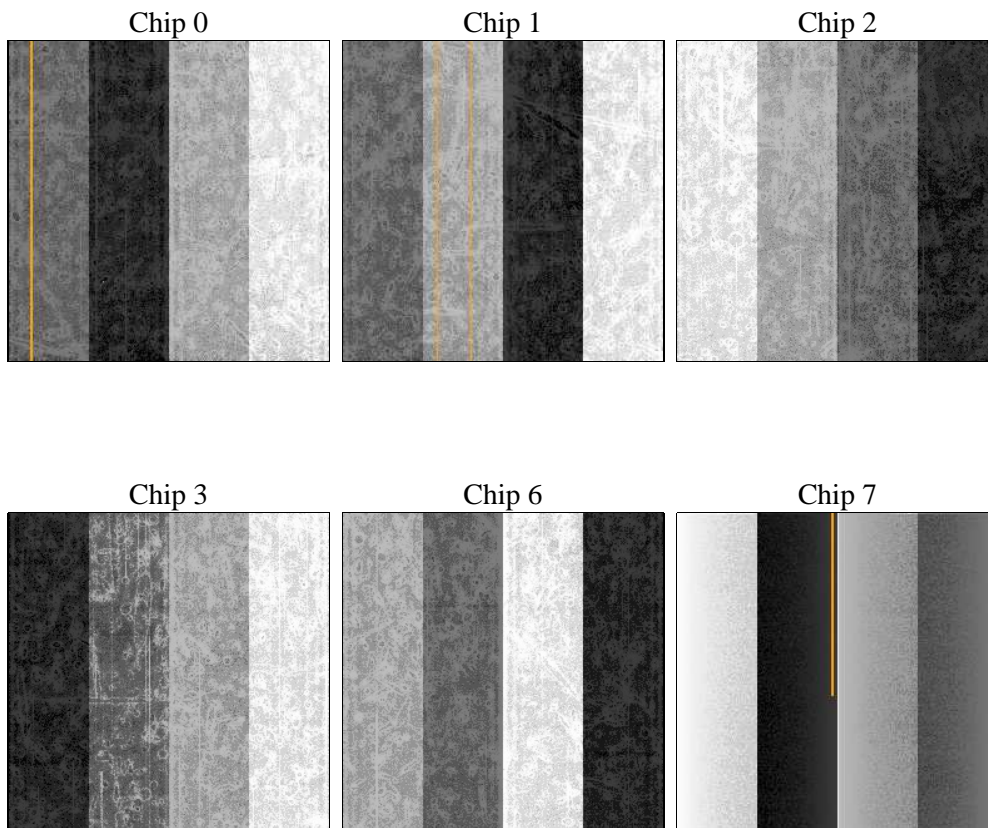
2 OBI

2.1 OBI

2.1.1 Images



2.1.2 Bias



2.1.3 Parameters

obi_num	0	Obi number	sched_exp_time	45000.000000	[s] Scheduled observation exposure time
ascdsver	10.3	Processing system revision	ontime	44969.543783605	Sum of GTIs [s]
caldbver	4.6.4	 	ontime0	44966.179673314	Sum of GTIs [s]
date	2014-11-28T23:56:22	Date and time of file creation	ontime1	44969.461833119	Sum of GTIs [s]
revision	2	Processing version of data	ontime2	44963.020783007	Sum of GTIs [s]
			ontime3	44969.543783605	Sum of GTIs [s]
			ontime6	44963.117891908	Sum of GTIs [s]
			ontime7	44966.343853295	Sum of GTIs [s]
			l1events	1324123	Number of level 1 events

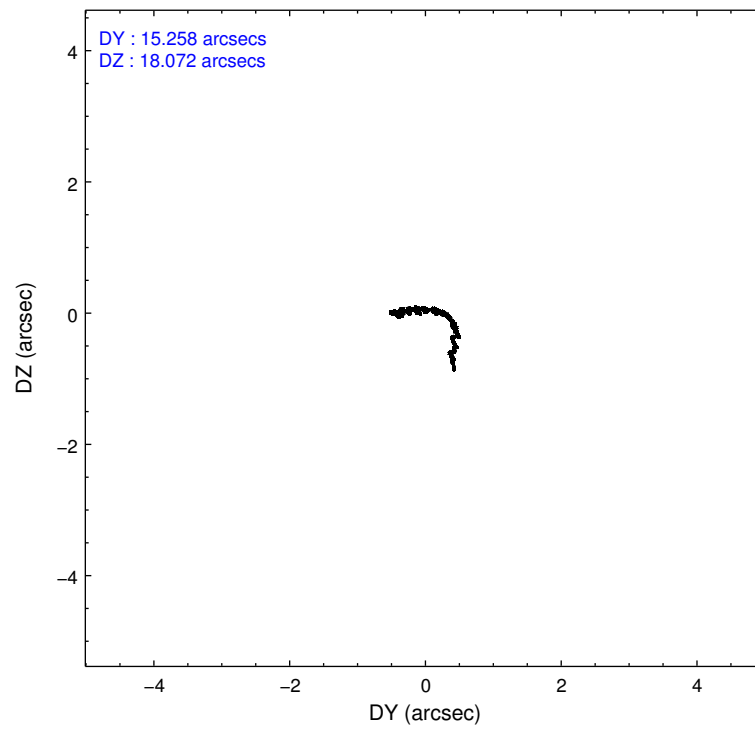
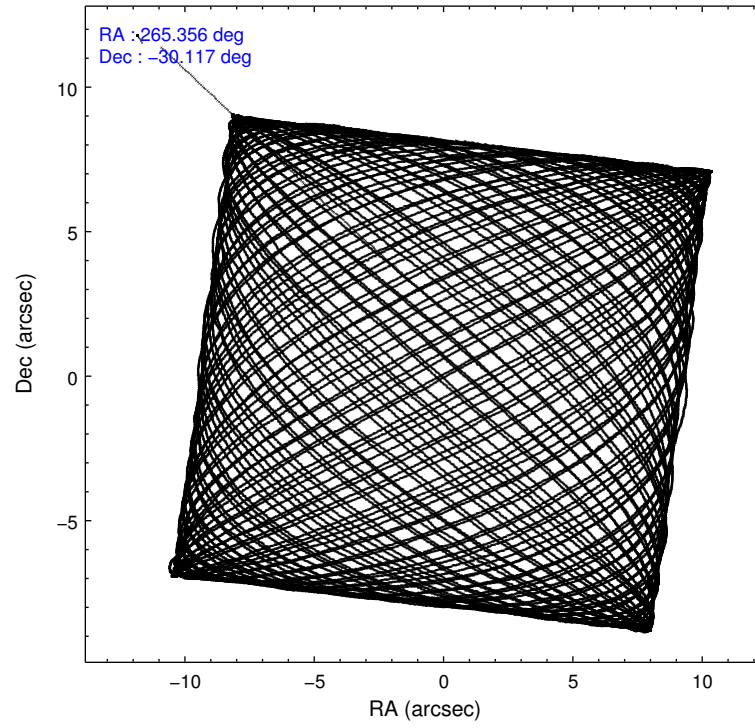
2.1.4 Events

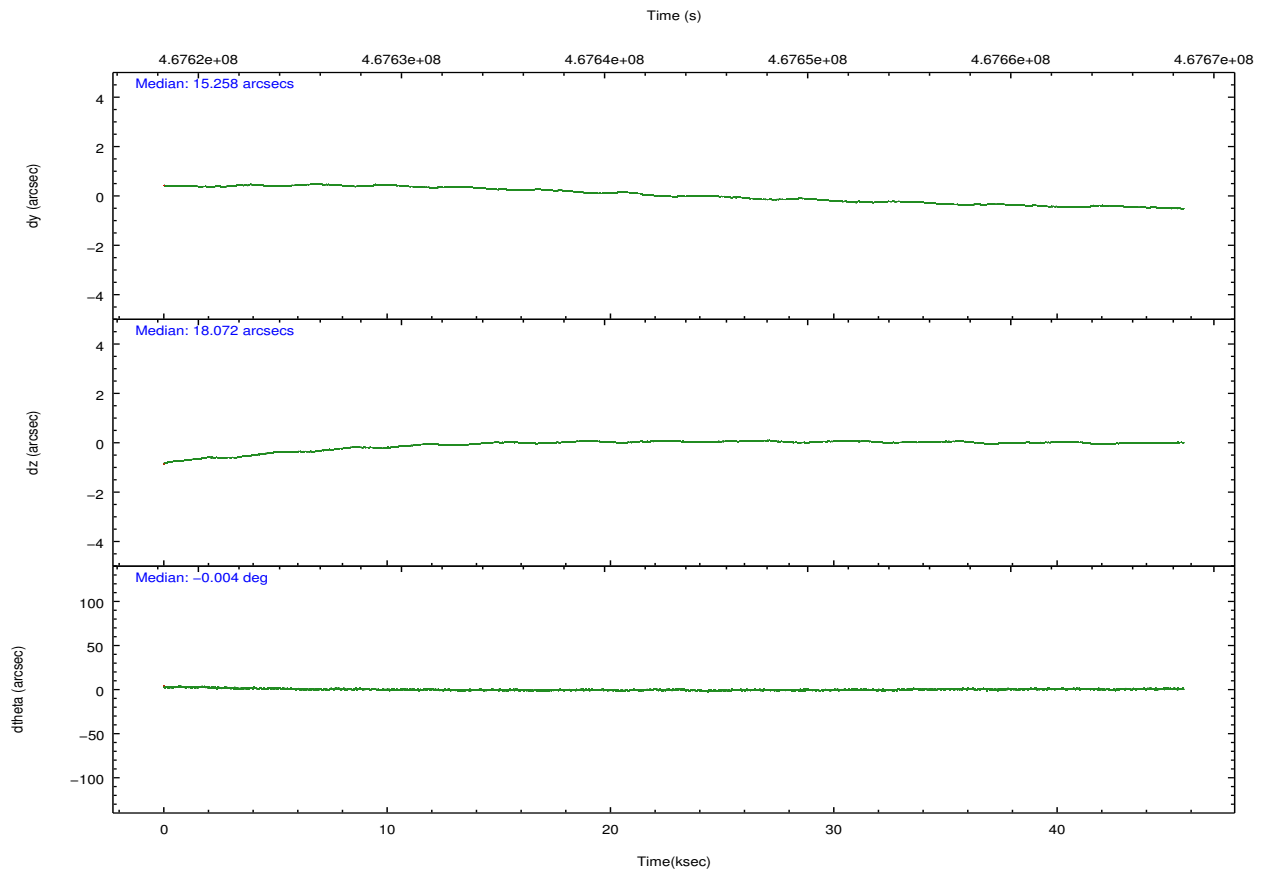
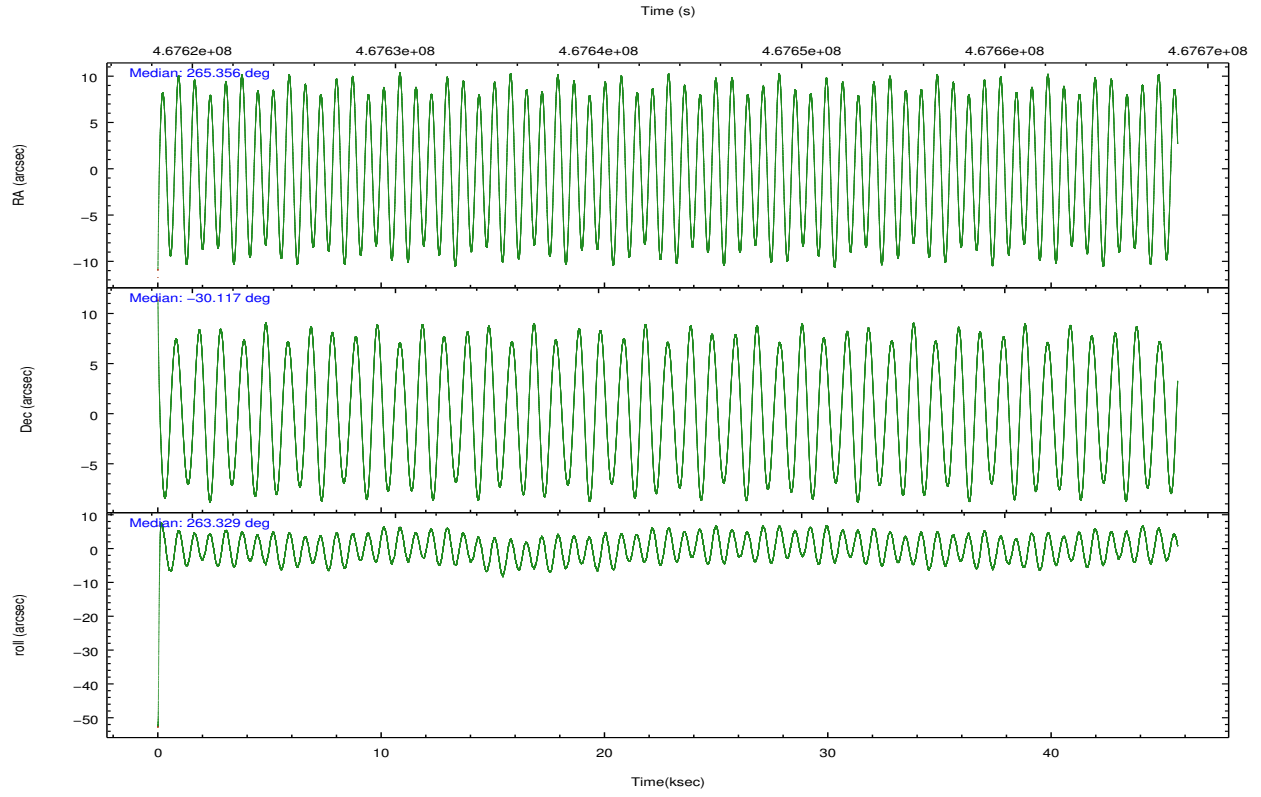
	ccd 0	ccd 1	ccd 2	ccd 3	ccd 6	ccd 7		ccd 0	ccd 1	ccd 2	ccd 3	ccd 6	ccd 7
level 1 events	202276	204007	218135	213790	227365	258550	grade 0 events	12691	12187	12333	12559	11976	12553
rejected events	172428	173341	189047	184855	197271	133148		6%	5%	5%	5%	5%	4%
rejected %	85%	84%	86%	86%	86%	51%	grade 1 events	140	131	153	120	140	374
								0%	0%	0%	0%	0%	0%
							grade 2 events	6939	6558	6609	6050	6584	26836
								3%	3%	3%	2%	2%	10%
							grade 3 events	2735	3011	2609	2712	2732	11141
								1%	1%	1%	1%	1%	4%
							grade 4 events	2669	3092	2748	2698	2843	11161
								1%	1%	1%	1%	1%	4%
							grade 5 events	8729	9426	8167	9797	9953	27240
								4%	4%	3%	4%	4%	10%
							grade 6 events	4816	5821	4792	4920	5964	63735
								2%	2%	2%	2%	2%	24%
							grade 7 events	163557	163781	180724	174934	187173	105510
								80%	80%	82%	81%	82%	40%

2.2 Compared Parameters

Parameter	Planned	Actual	Parameter	Planned	Actual
Instrument	ACIS	ACIS	Obspar format version number	7	7
Detector	ACIS-012367	ACIS-012367	Obspar file type	PREDICTED	ACTUAL
Grating	NONE	NONE	Obspar update status	NONE	UPDATED
Data mode	VFAINT	VFAINT	CCD I0 on	Y	Y
Observation mode	POINTING	POINTING	CCD I1 on	Y	Y
[deg] Pointing RA	265.343026	265.3557393269457	CCD I2 on	Y	Y
[deg] Pointing Dec	-30.091711	-30.11692661859589	CCD I3 on	Y	Y
[deg] Pointing Roll	263.117801	263.3328467584773	CCD S0 on	N	N
[mm] SIM focus pos	-0.782348	-0.7809083437167272	CCD S1 on	N	N
[mm] SIM defocus	0	0.001439871863259334	CCD S2 on	O2	Y
[mm] SIM translation stage pos	-233.592463	-233.5874344608287	CCD S3 on	O1	Y
[mm] SIM translation stage offset	0	-0.005018542100998502	CCD S4 on	N	N
[s] Observation start time (MET)	467621242.184000	467620040.26859	CCD S5 on	N	N
Observation start date	2012-10-26T06:46:15	2012-10-26T06:27:20	Number of optional ACIS chips dropped	0	0
[s] Observation end time (MET)	467666242.184000	467667195.90862	On-chip summing requested	N	N
Observation end date	2012-10-26T19:16:15	2012-10-26T19:33:15	Subarray requested	NONE	NONE
Read mode	TIMED	TIMED	Alternating exposures requested	N	N
			[s] Primary exposure time	0.000000	3.2

2.3 Aspect



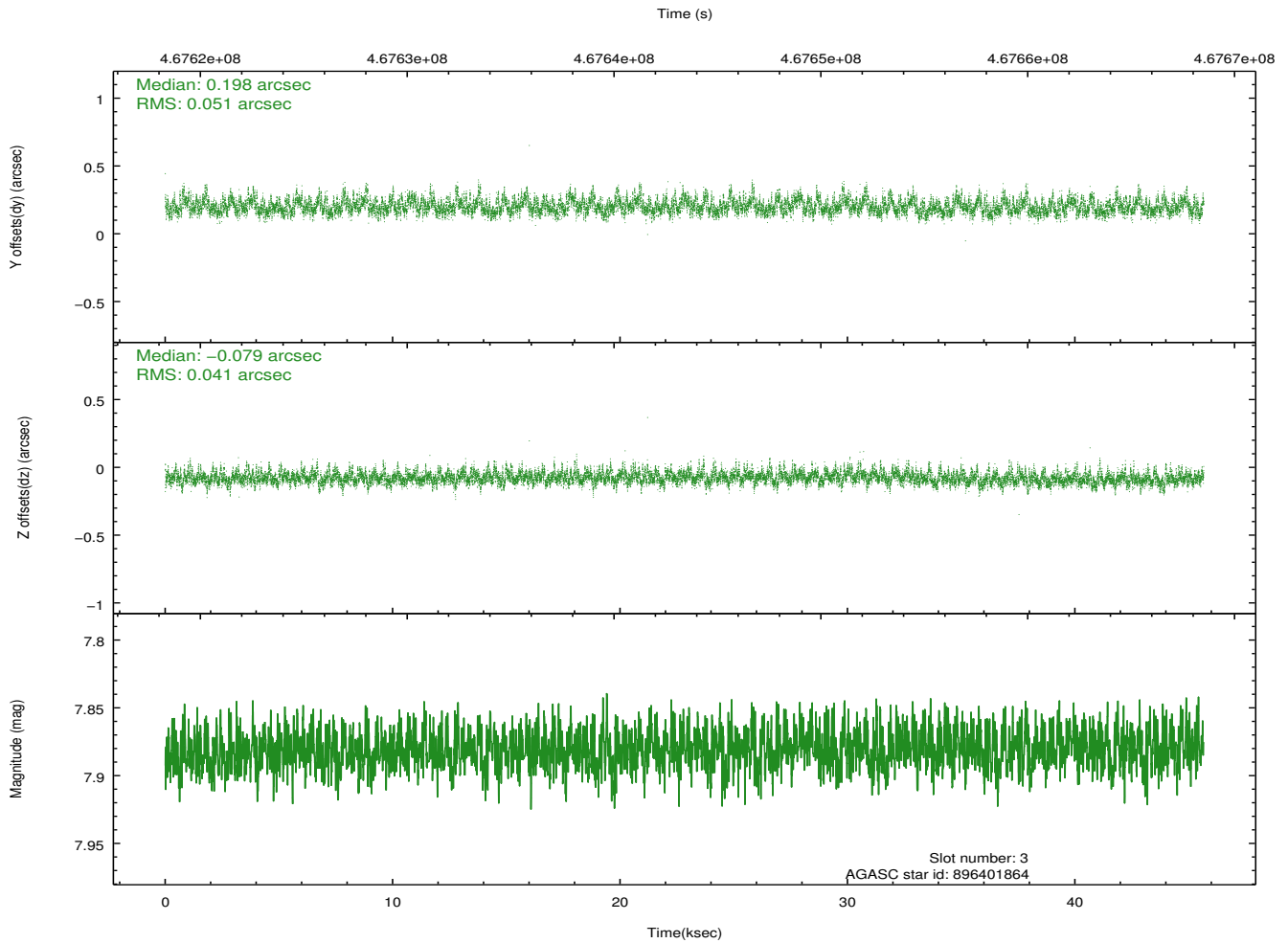
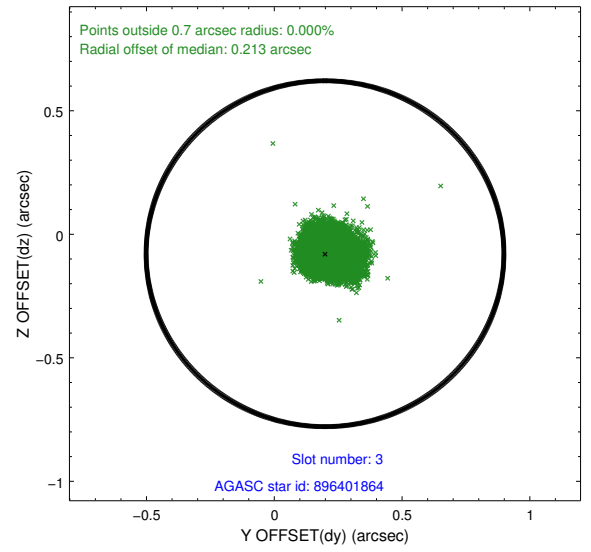
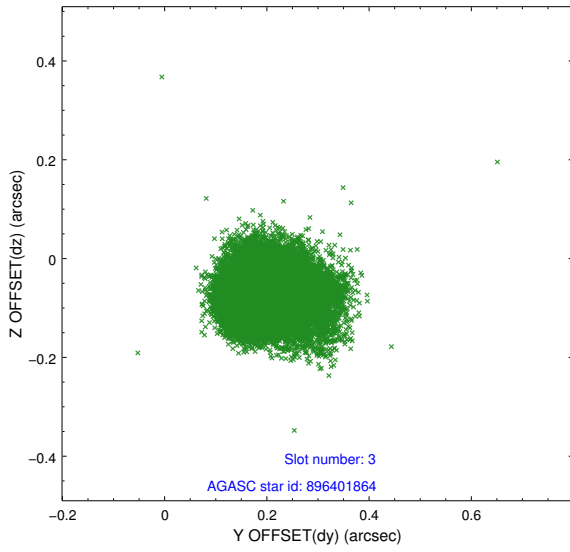


Slot Statistics

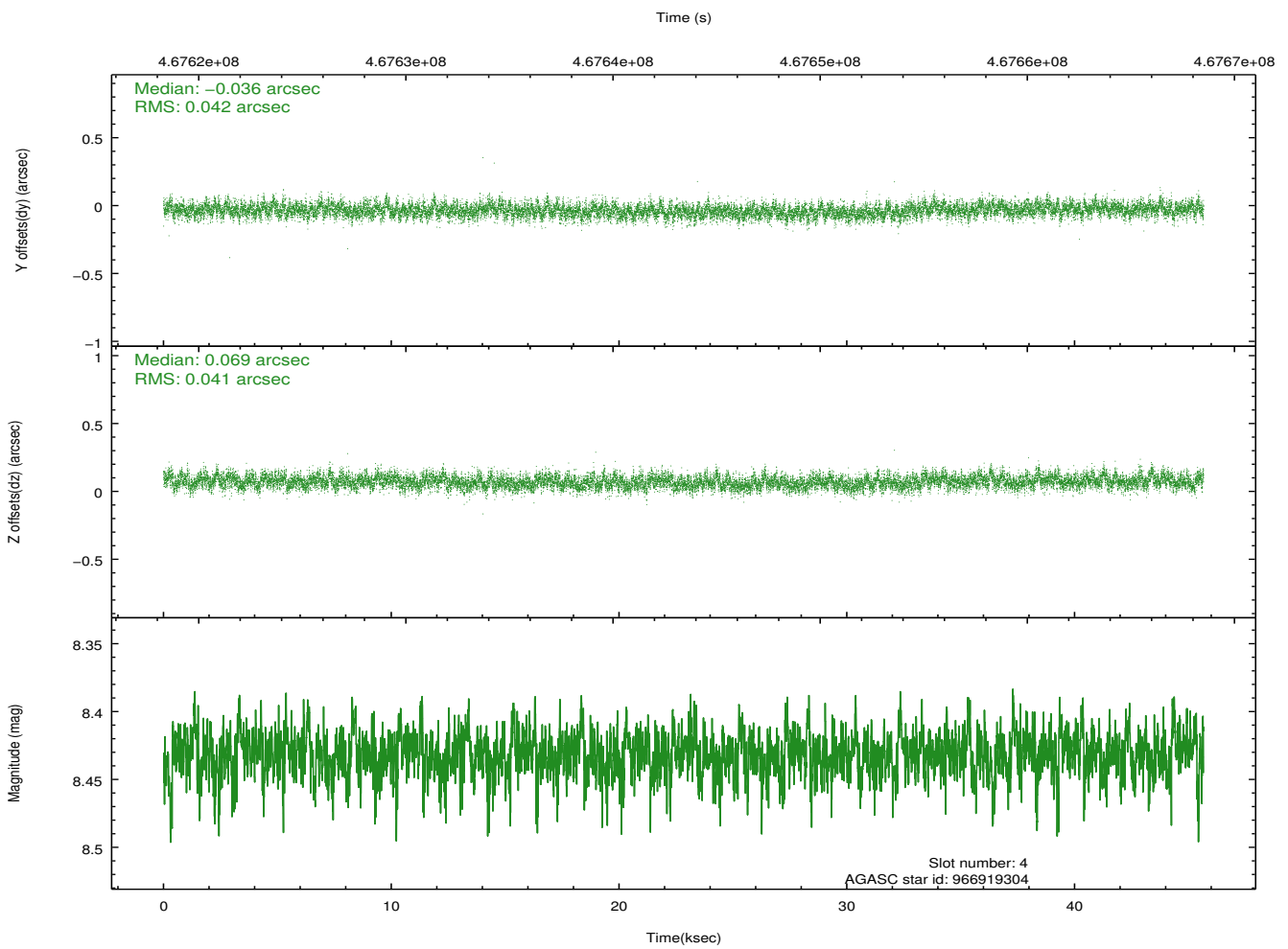
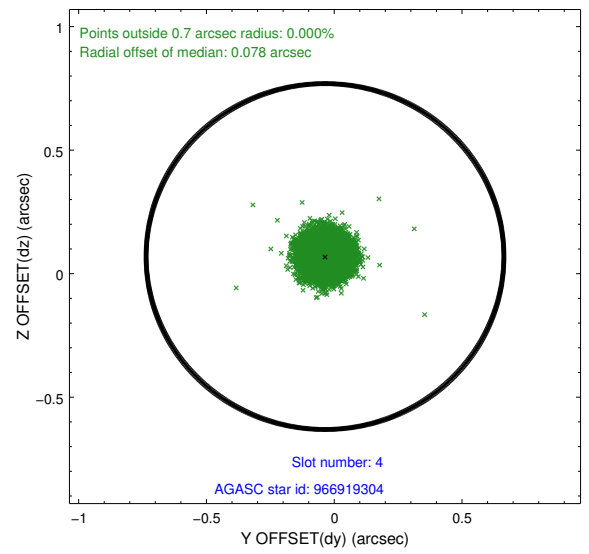
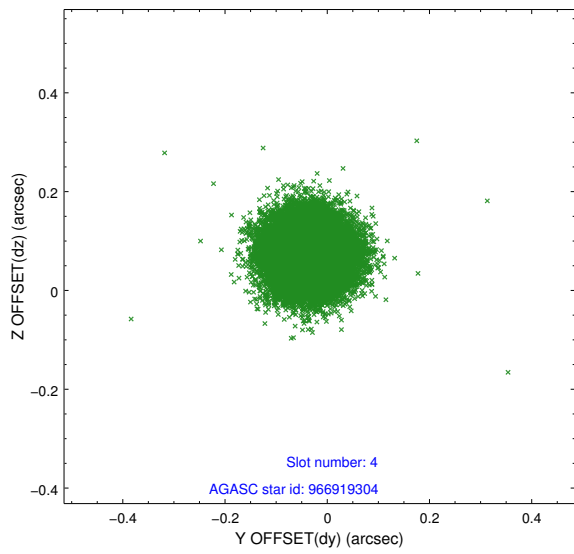
slot	status	used	id	mag	n_pts	med_dy	med_dz	dr1	dr2	ra	dec	mean_y	mean_z
0	FID		ACIS-I-1	7.06	11138	0.070	-0.002	0.011	0.017	0.000000	0.000000	924.28	-841.63
1	FID		ACIS-I-2	6.97	11137	-0.063	-0.041	0.017	0.026	0.000000	0.000000	-769.95	-848.16
2	FID		ACIS-I-5	7.05	11138	-0.102	0.111	0.016	0.026	0.000000	0.000000	-1824.23	1055.87
3	GUIDE	used	896401864	7.88	22270	0.198	-0.079	0.068	0.114	264.861768	-29.959752	-287.99	-1546.81
4	GUIDE	used	966919304	8.43	22264	-0.036	0.069	0.063	0.100	265.660763	-30.717261	2119.52	1246.54
5	GUIDE	used	966920024	8.82	22264	-0.082	-0.198	0.083	0.130	265.515080	-30.492187	1368.08	702.69
6	GUIDE	used	966924920	8.07	22269	-0.015	0.080	0.069	0.111	265.875401	-30.176961	110.27	1682.26
7	GUIDE	used	896404376	6.67	22274	-0.071	0.122	0.059	0.092	264.835179	-29.530972	-1809.66	-1820.70

2.4 Star Slots

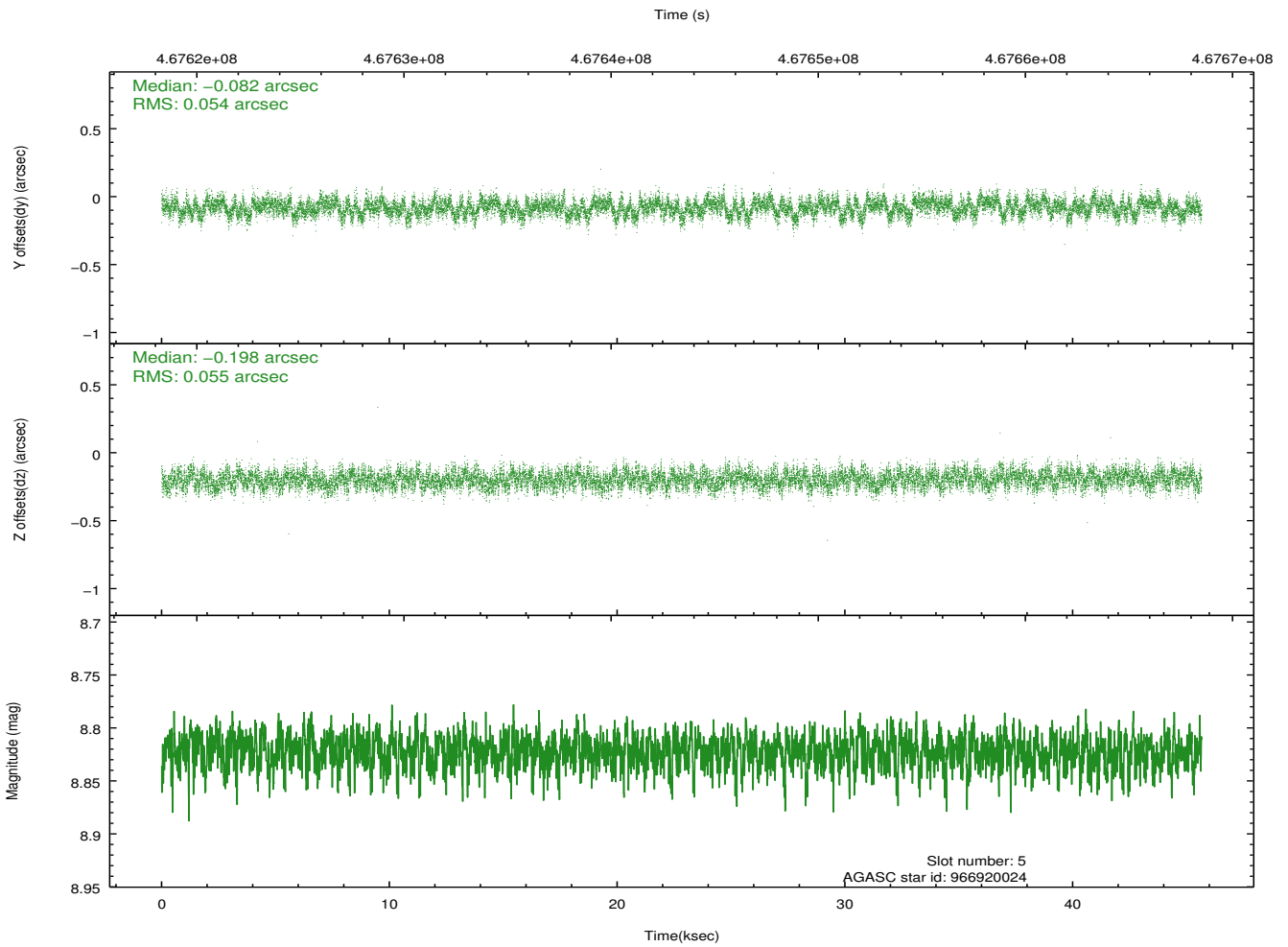
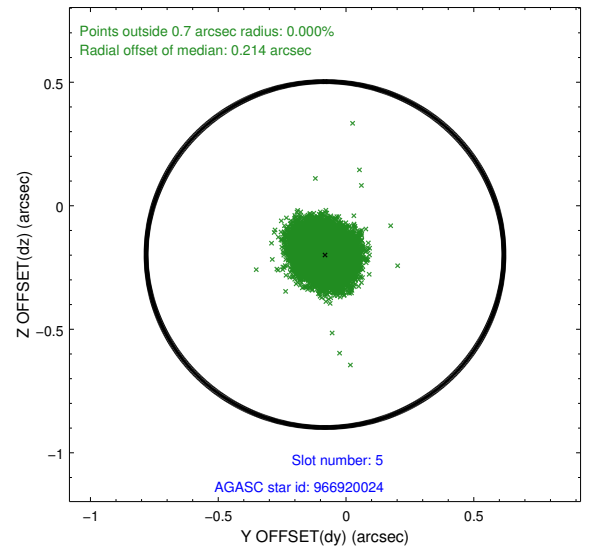
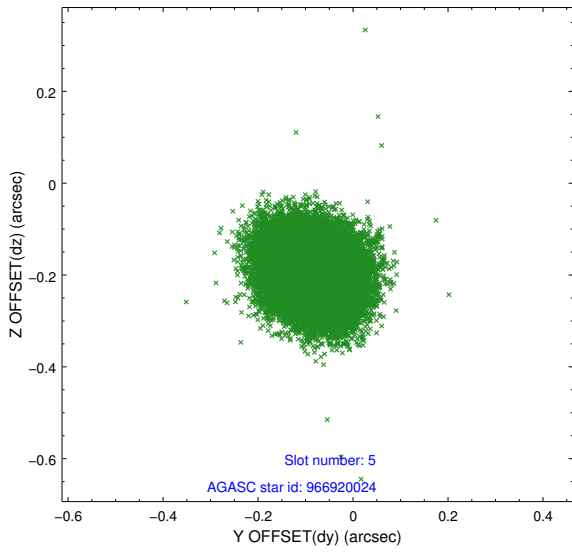
2.4.1 Slot 3



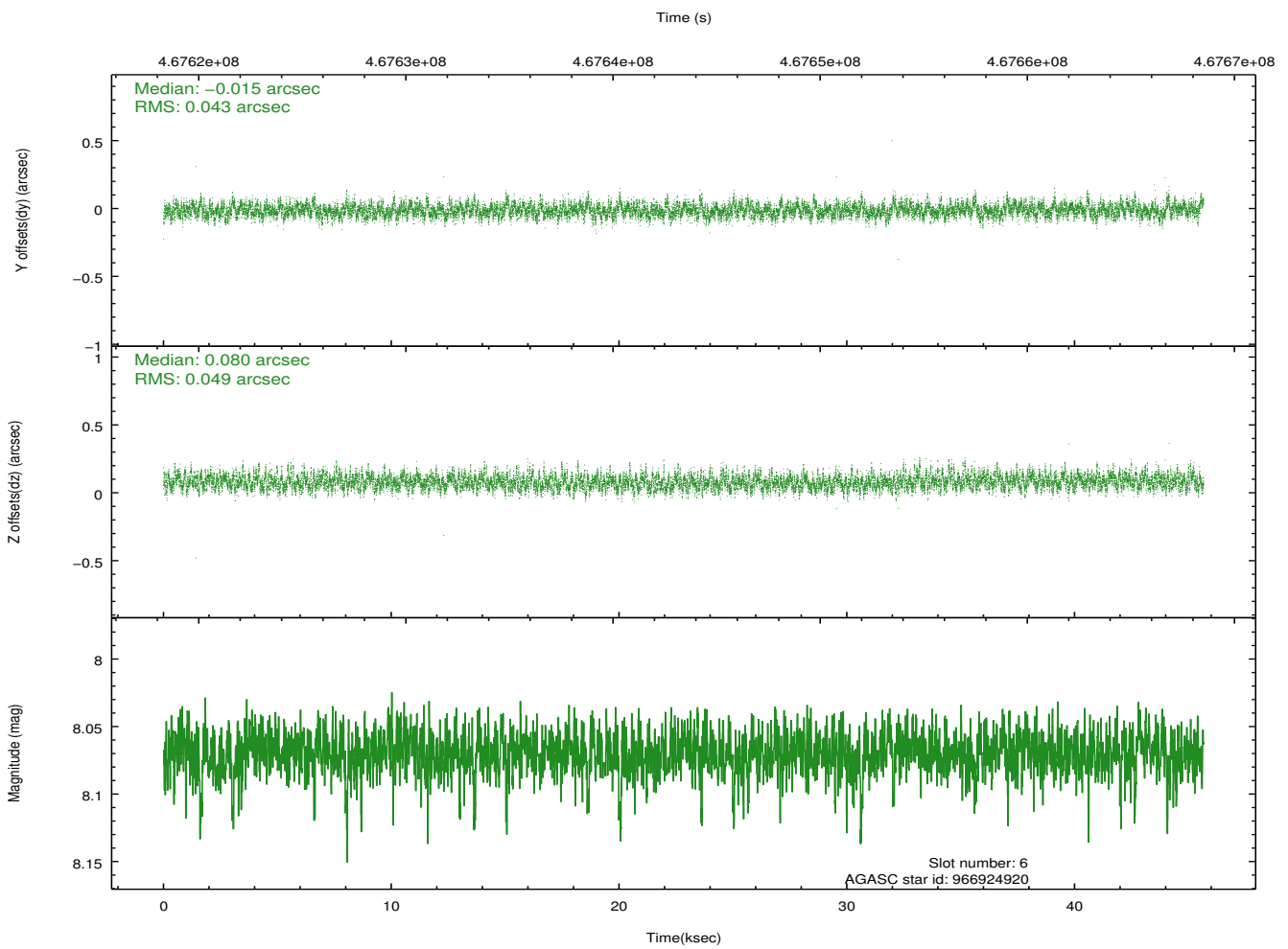
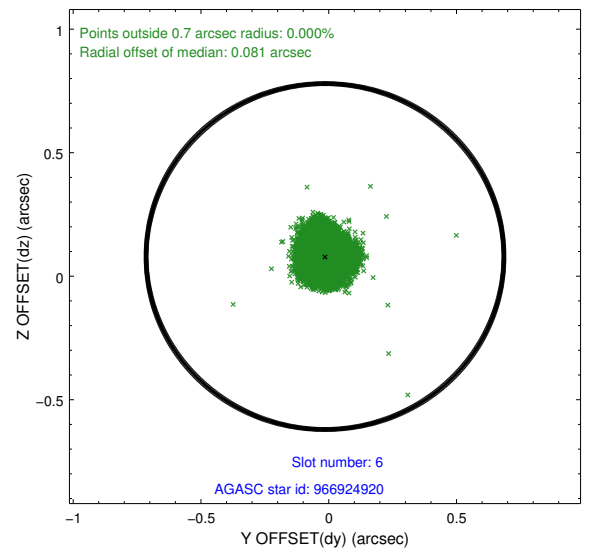
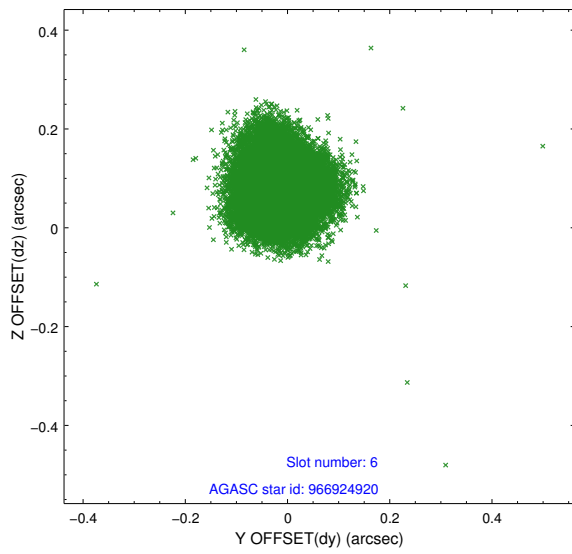
2.4.2 Slot 4



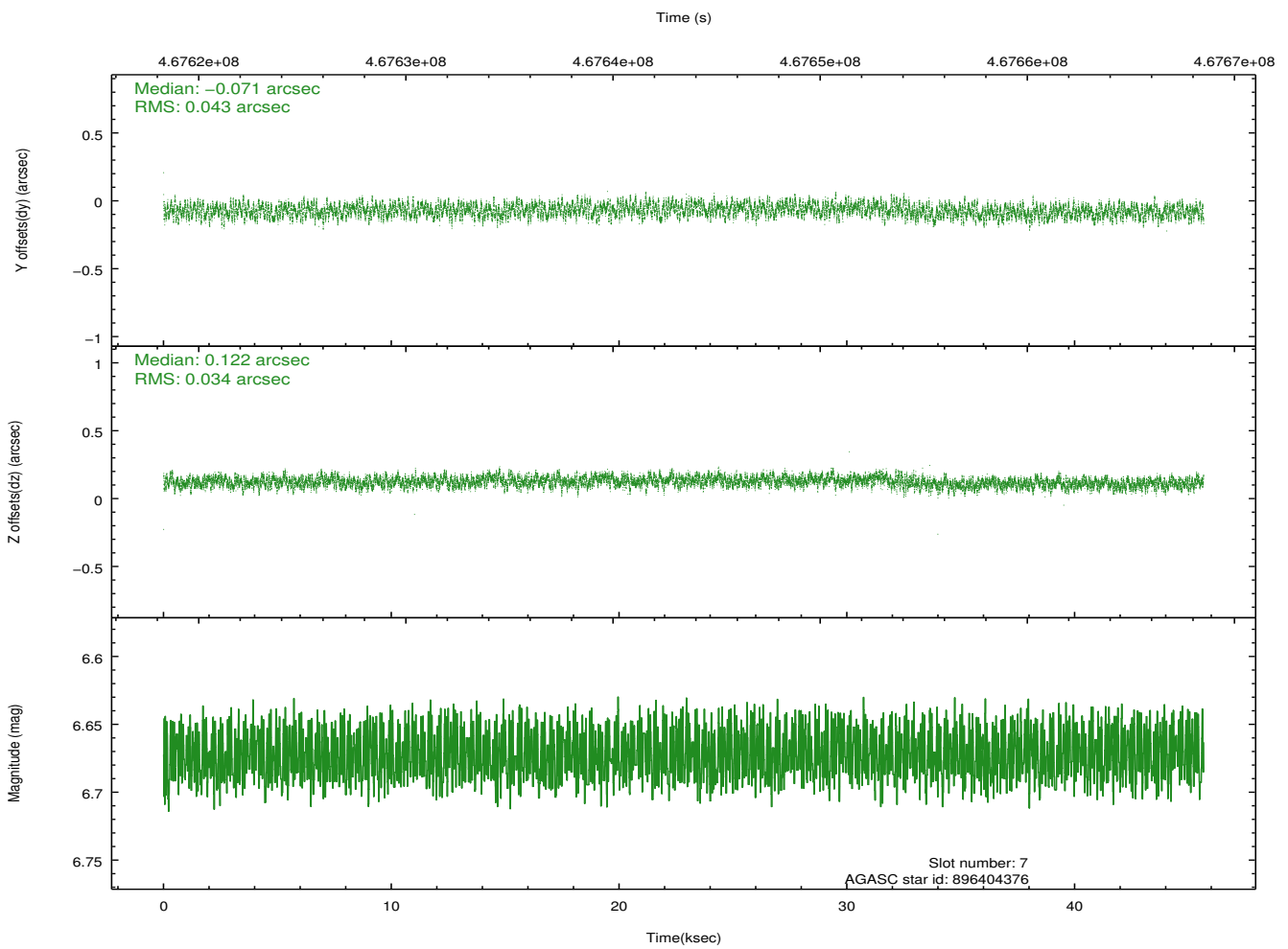
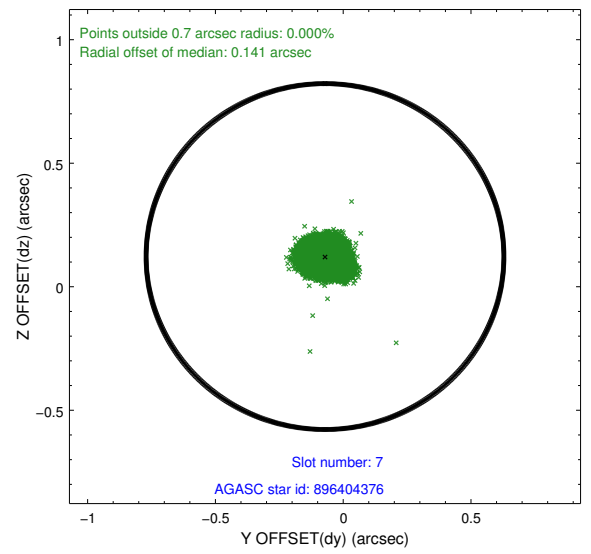
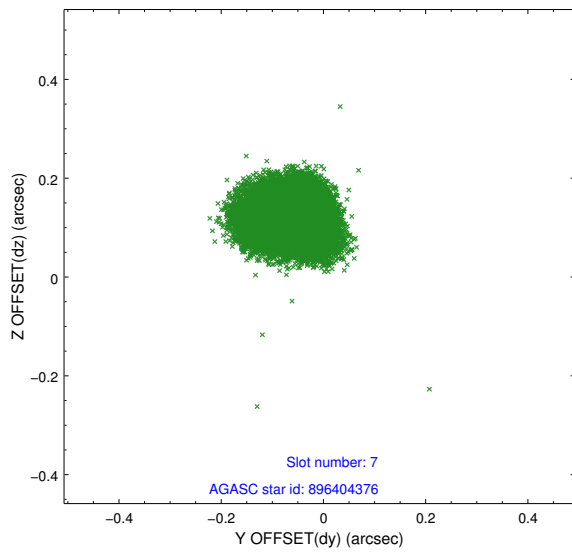
2.4.3 Slot 5



2.4.4 Slot 6

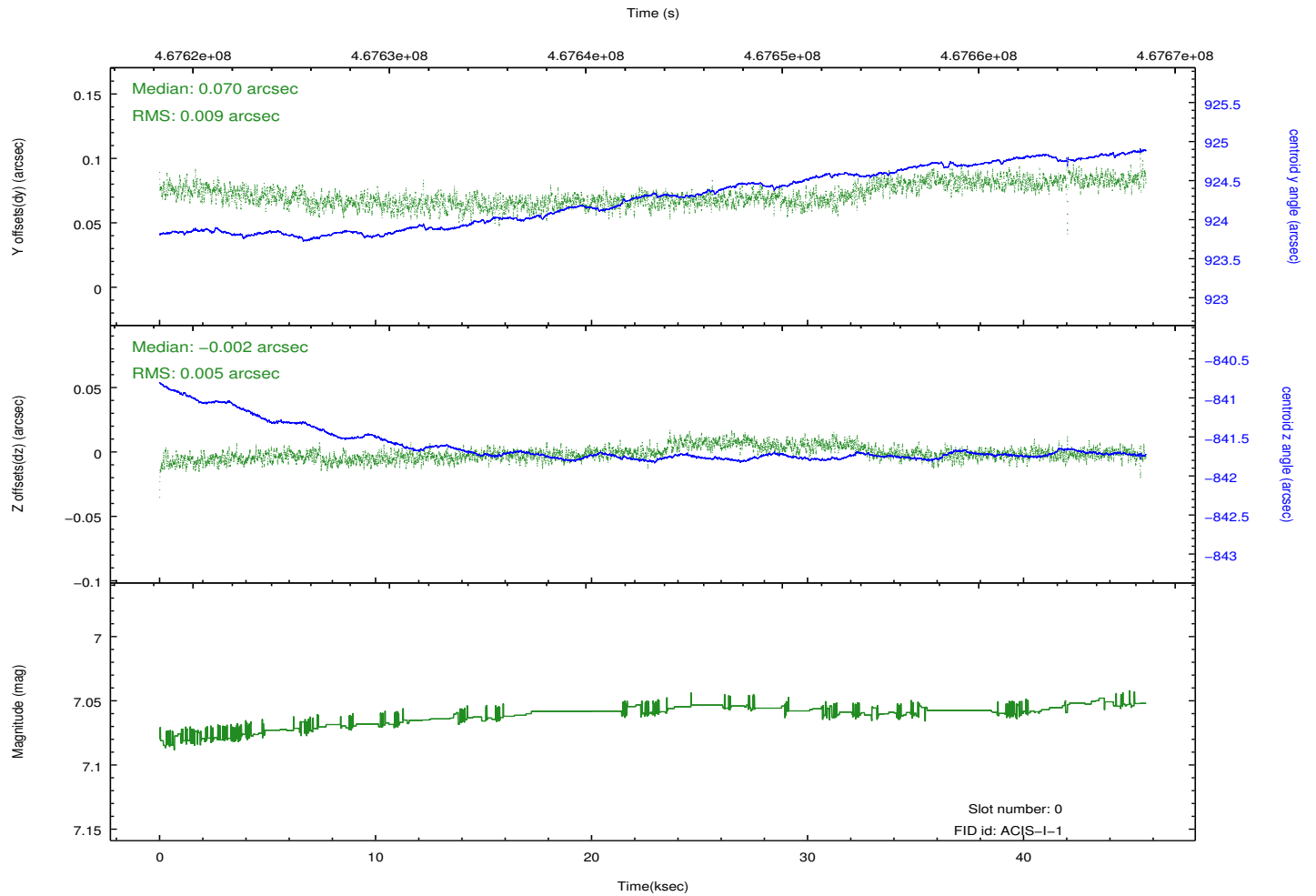
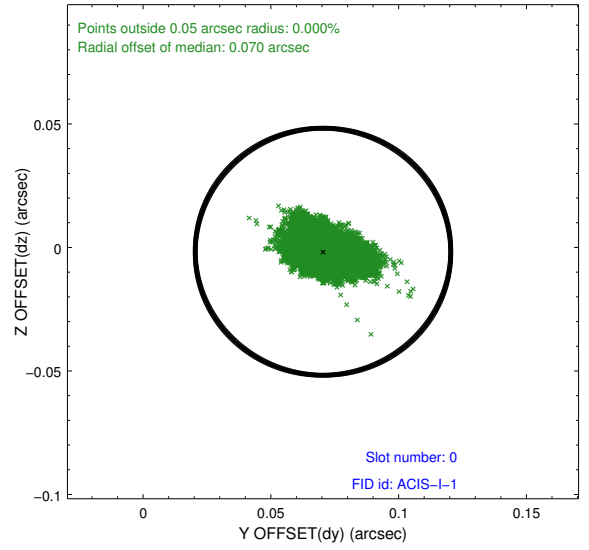
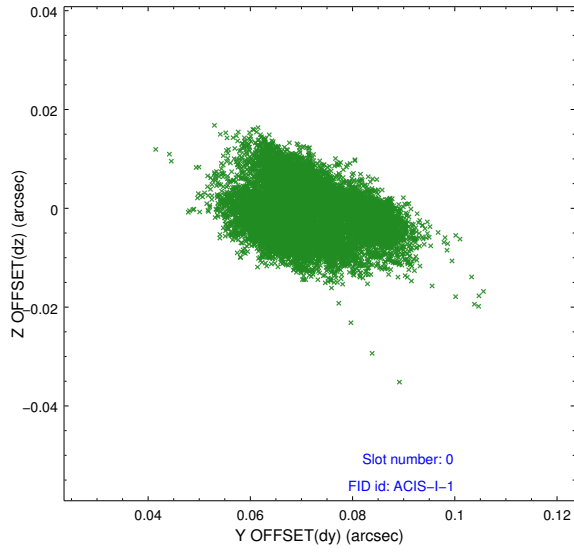


2.4.5 Slot 7

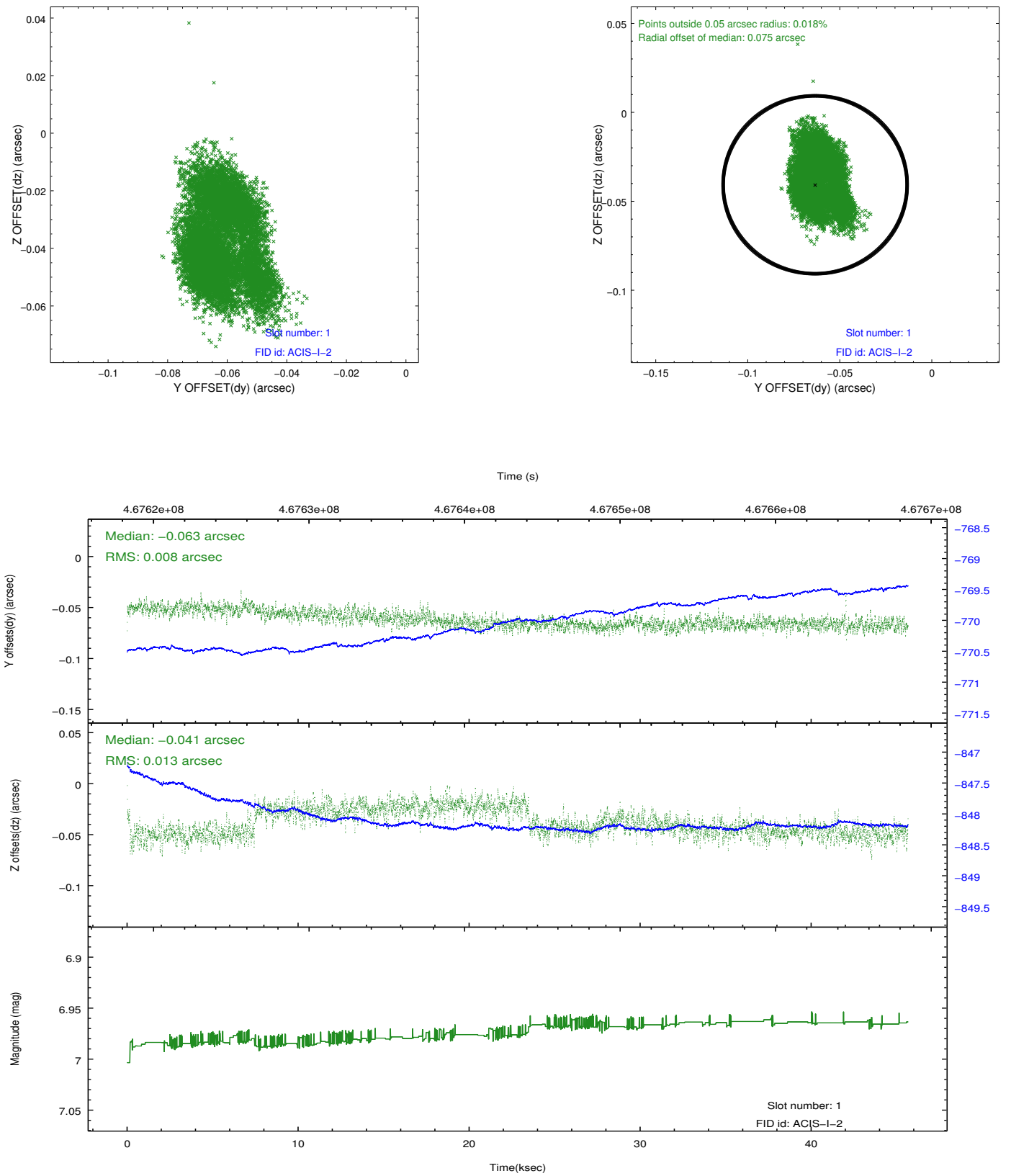


2.5 FID Slots

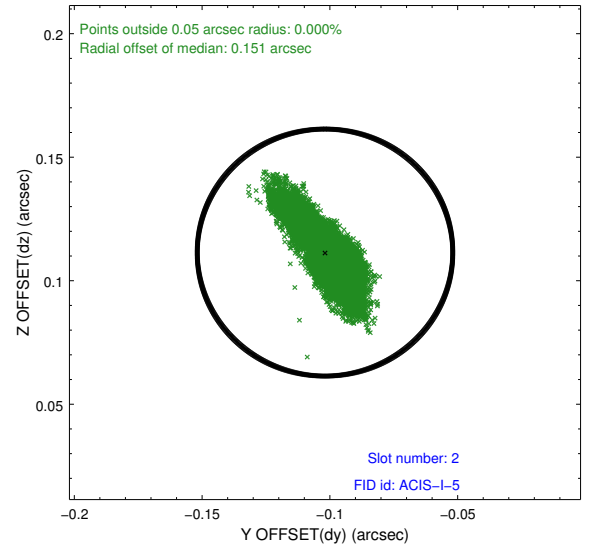
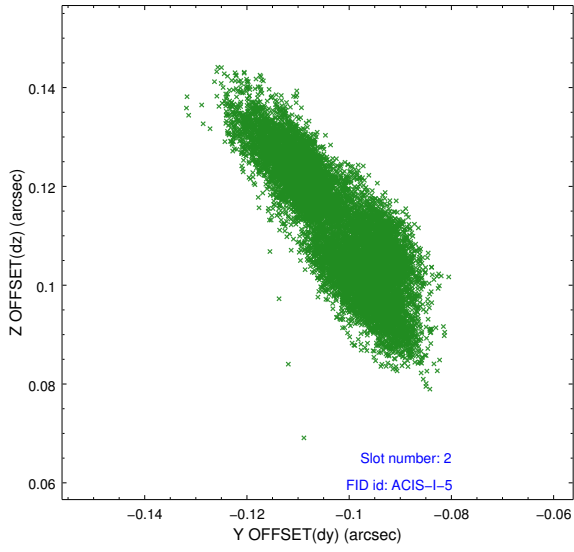
2.5.1 Slot 0



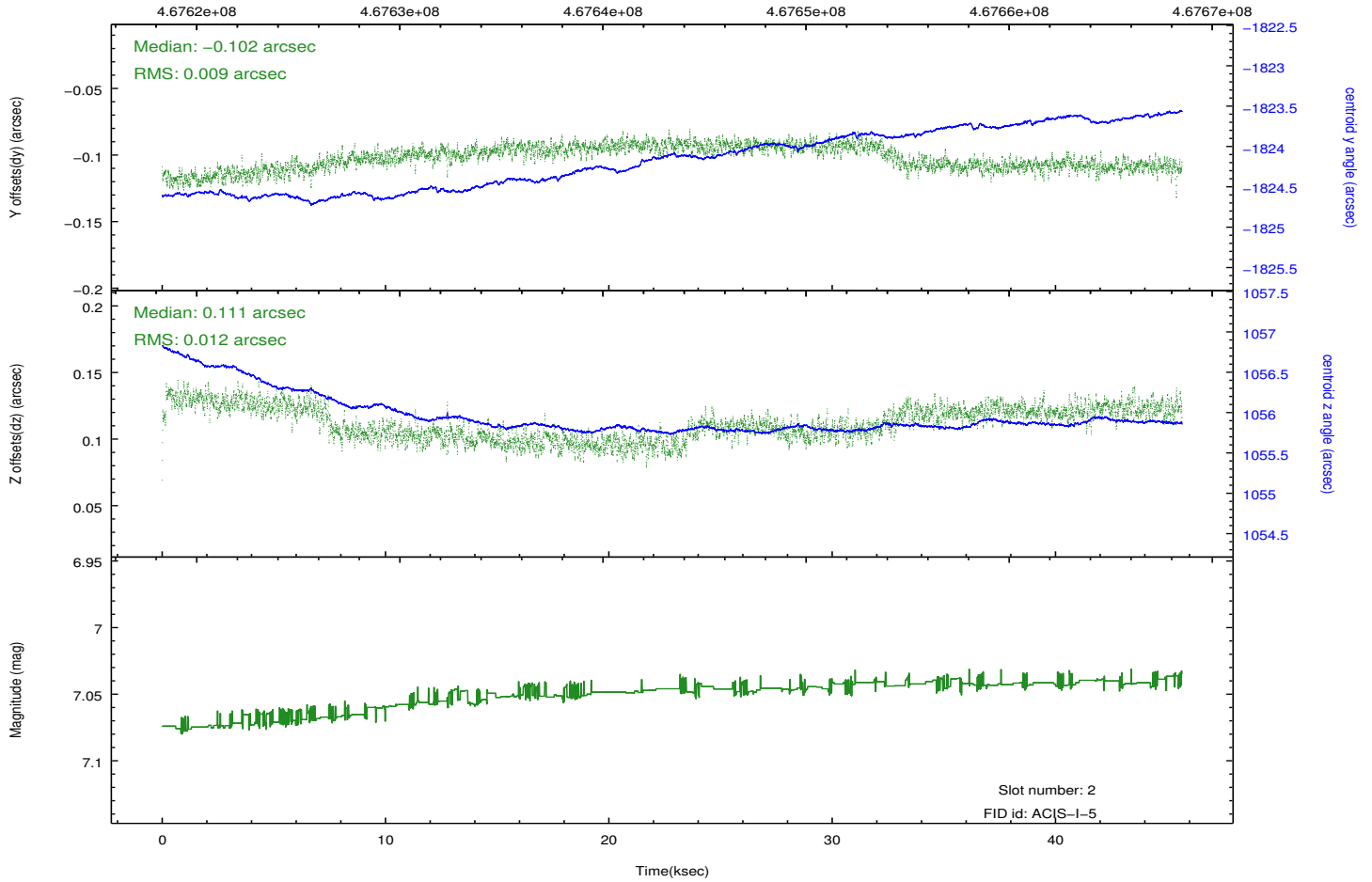
2.5.2 Slot 1



2.5.3 Slot 2



Time (s)



A Summary

A.1 Status

V&V Scientist	Beth Sundheim
V&V Date (YYYY-MM-DD)	2014.12.02
V&V Edition	1
V&V Disposition and Status	OK
V&V Charge Time	44.969543783605

A.2 Comments

These data have been reprocessed with new aspect alignment calibration files that correct small mean offsets (up to 0.4 arcsecs) and improve overall astrometric accuracy. The new calibration was determined using data from the time period being reprocessed and was performed using cross-correlation of X-ray sources with radio and optical counterparts.