

V&V Reference Report

L2 ASCDS Version : 8.4.3

Observation 13930 - L2 Version 2
Chandra X-Ray Center

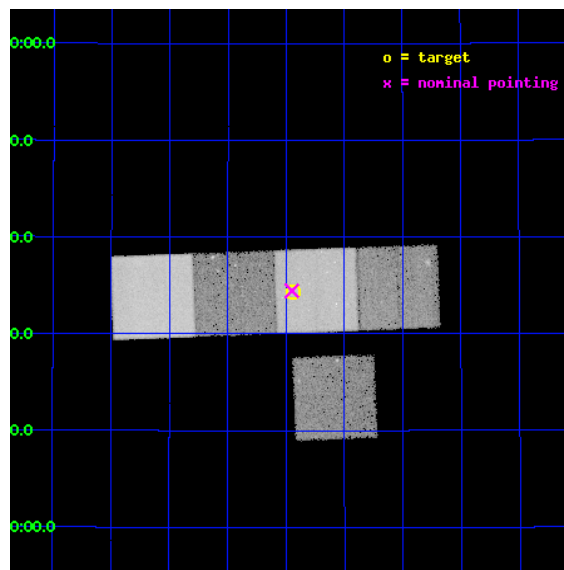
L2 Processing Date : Feb 26 2012

Contents

1	Front	2
2	OBI	3
2.1	OBI	3
2.1.1	Images	3
2.1.2	Bias	3
2.1.3	Parameters	4
2.1.4	Events	4
2.2	Compared Parameters	5
2.3	Aspect	6
2.4	Star Slots	9
2.4.1	Slot 3	9
2.4.2	Slot 4	10
2.4.3	Slot 5	11
2.4.4	Slot 6	12
2.4.5	Slot 7	13
2.5	FID Slots	14
2.5.1	Slot 0	14
2.5.2	Slot 1	15
2.5.3	Slot 2	16
A	Summary	17
A.1	Status	17
A.2	Comments	17

1 Front

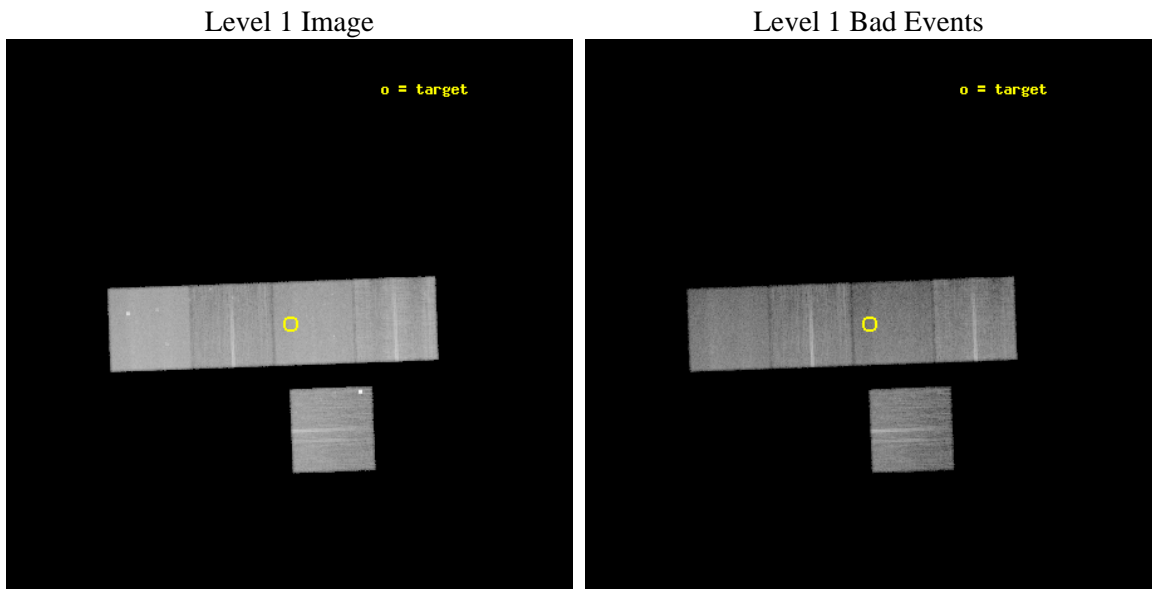
seq_num	702654	Sequence number
obs_id	13930	Observation id
title	Probing the Early Evolution of Galaxies and Massive Black Holes With Nearby Star-Forming Dwarfs	Proposal title
observer	Dr. Amy Reines	Principal investigator
object	II Zw 70	Source name
dtcycle	0	
cycle	P	events from which exps? Prim/Second/Both
ra_targ	222.735417	Observer's specified target RA [deg]
dec_targ	35.571667	Observer's specified target Dec [deg]
ra_nom	222.73752238442	Nominal RA [deg]
dec_nom	35.574152787117	Nominal Dec [deg]
roll_nom	357.86701512906	Nominal Roll [deg]
revision	2	Processing version of data
ontime	31038.893740058	Sum of GTIs [s]
livetime	30633.347742843	Livetime [s]
ontime3	31035.629649699	Sum of GTIs [s]
ontime5	31038.852700055	Sum of GTIs [s]
ontime6	31038.811660051	Sum of GTIs [s]
ontime7	31038.893740058	Sum of GTIs [s]
ontime8	31035.588549852	Sum of GTIs [s]
l2events	307622	Number of level 2 events



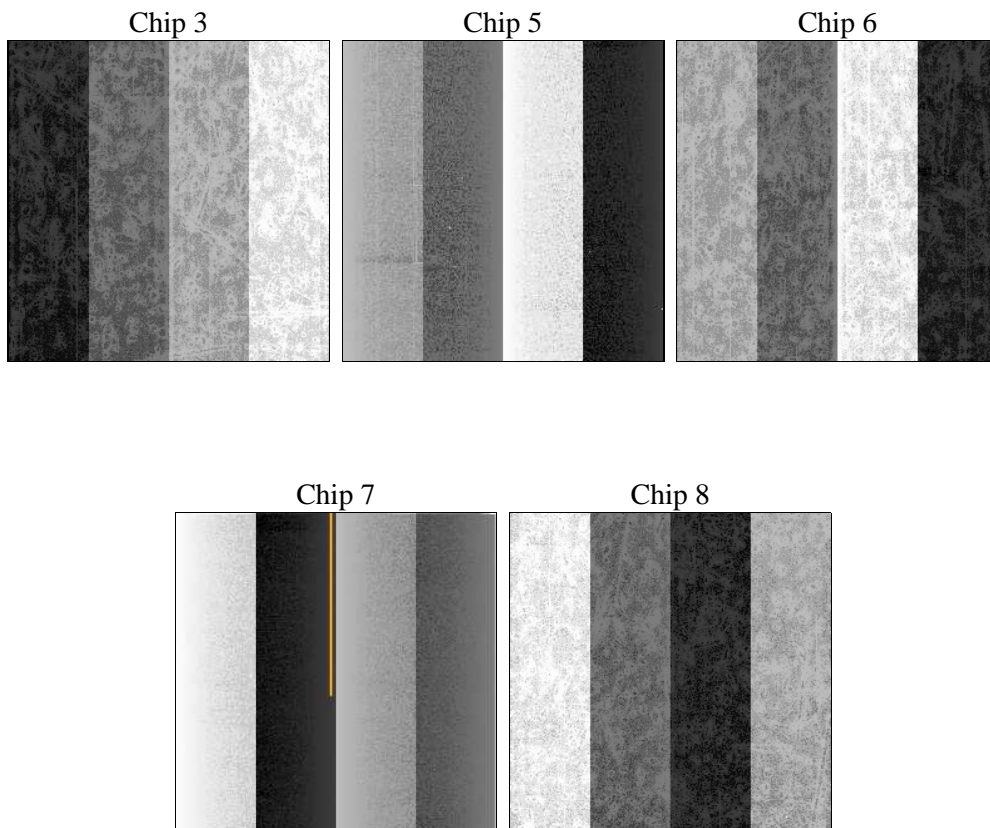
2 OBI

2.1 OBI

2.1.1 Images



2.1.2 Bias



2.1.3 Parameters

obi_num	0	Obi number	sched_exp_time	31000.000000	[s] Scheduled observation exposure time
ascdsver	8.4.3	Processing system revision	ontime	31038.893740058	Sum of GTIs [s]
caldbver	4.4.8	 	ontime3	31035.629649699	Sum of GTIs [s]
date	2012-02-26T04:54:49	Date and time of file creation	ontime5	31038.852700055	Sum of GTIs [s]
revision	2	Processing version of data	ontime6	31038.811660051	Sum of GTIs [s]
			ontime7	31038.893740058	Sum of GTIs [s]
			ontime8	31035.588549852	Sum of GTIs [s]
			l1events	1192205	Number of level 1 events

2.1.4 Events

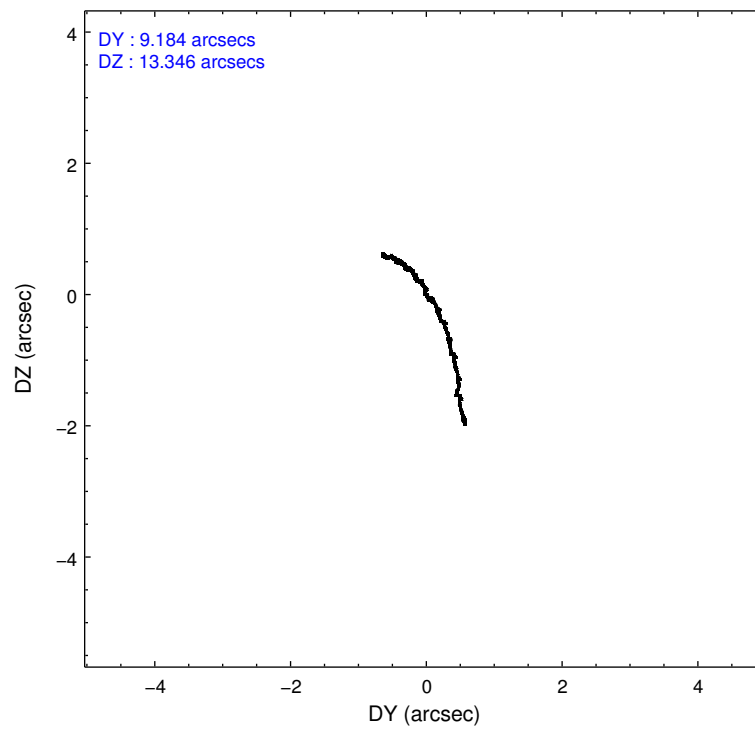
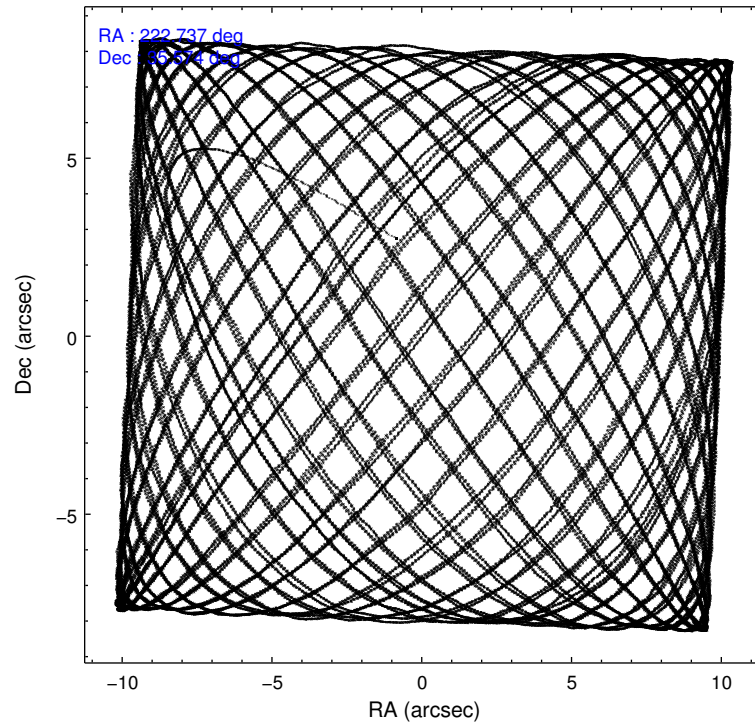
	ccd 3	ccd 5	ccd 6	ccd 7	ccd 8
level 1 events	194403	300622	198517	247443	251220
rejected events	164772	155593	175505	138150	183006
rejected %	84%	51%	88%	55%	72%

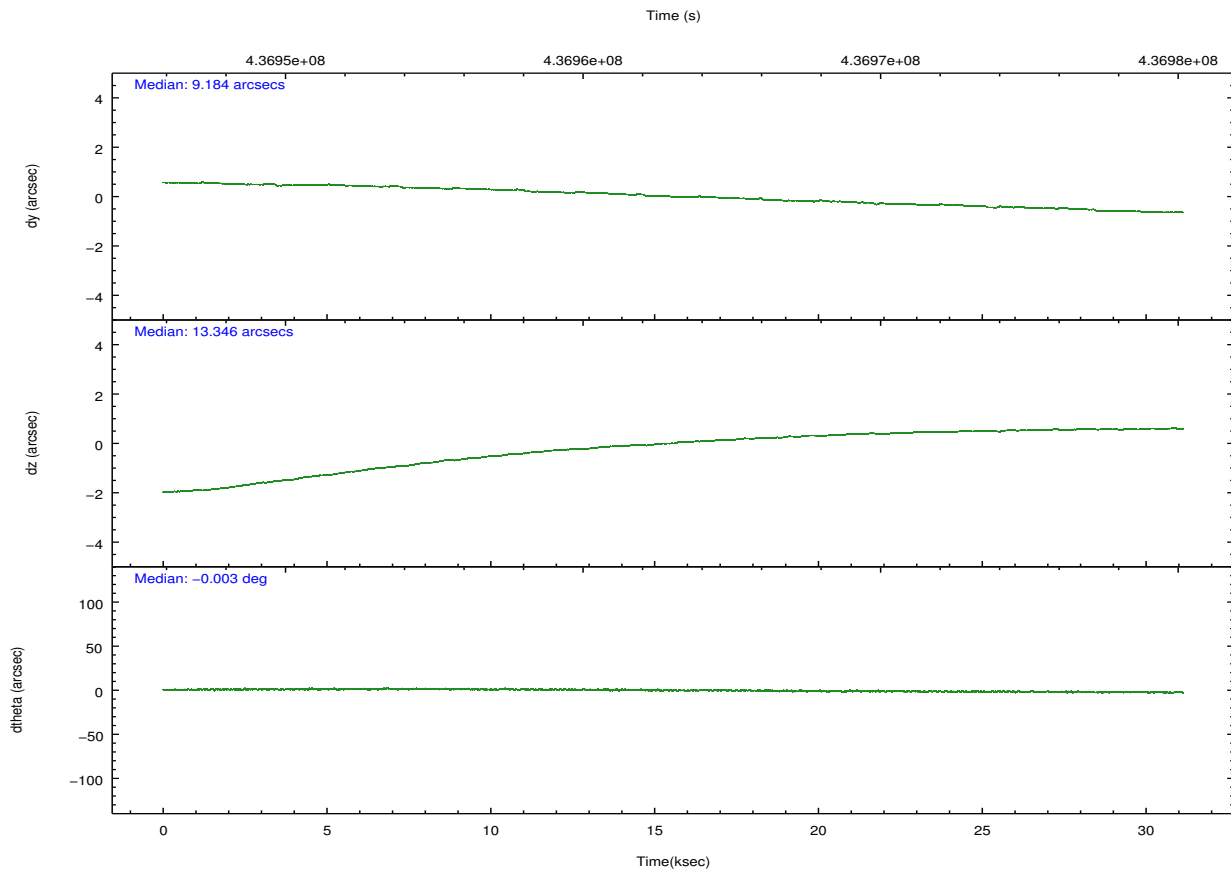
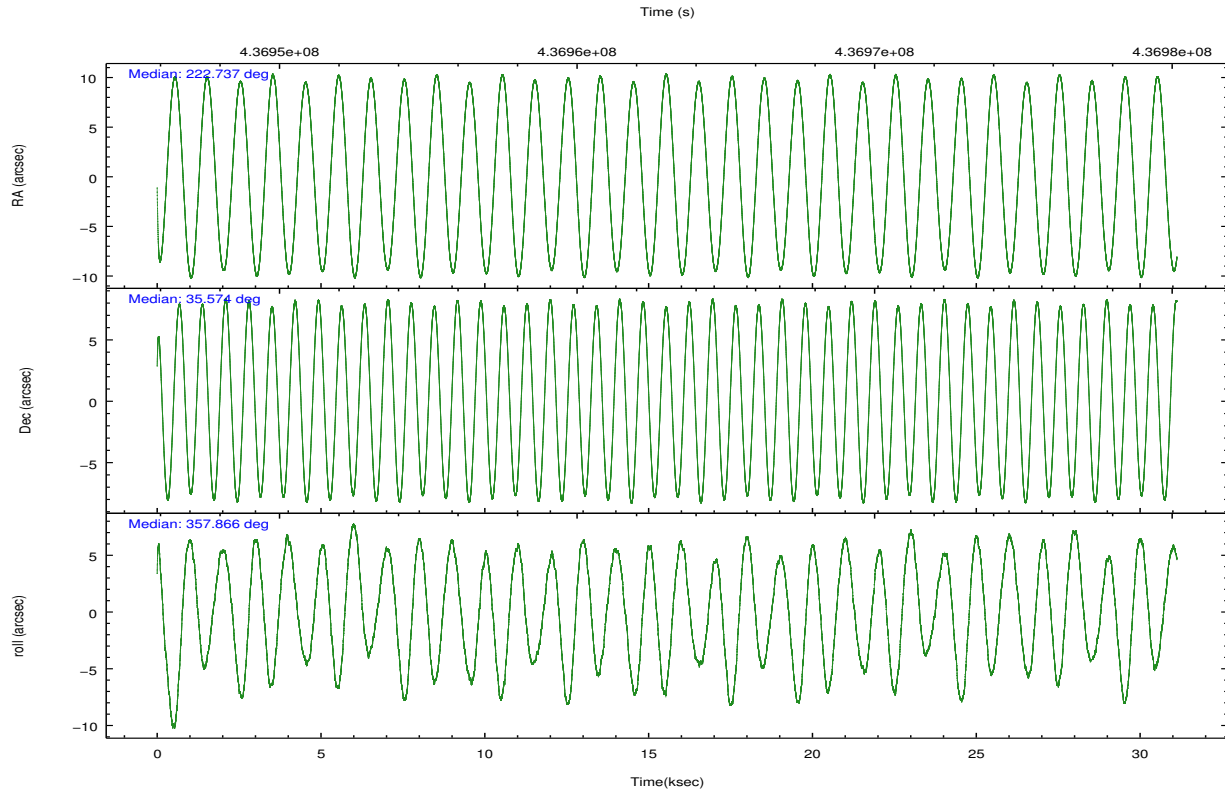
	ccd 3	ccd 5	ccd 6	ccd 7	ccd 8
grade 0 events	16511	11147	8025	10000	20436
	8%	3%	4%	4%	8%
grade 1 events	150	570	109	329	210
	0%	0%	0%	0%	0%
grade 2 events	4452	44867	5161	22425	15837
	2%	14%	2%	9%	6%
grade 3 events	2183	5345	2329	9534	7148
	1%	1%	1%	3%	2%
grade 4 events	2236	5186	2350	9189	6827
	1%	1%	1%	3%	2%
grade 5 events	9486	22741	9364	25453	13146
	4%	7%	4%	10%	5%
grade 6 events	4253	78503	5153	58153	17974
	2%	26%	2%	23%	7%
grade 7 events	155132	132263	166026	112360	169642
	79%	43%	83%	45%	67%

2.2 Compared Parameters

Parameter	Planned	Actual	Parameter	Planned	Actual
Instrument	ACIS	ACIS	Obspar format version number	7	7
Detector	ACIS-35678	ACIS-35678	Obspar file type	PREDICTED	ACTUAL
Grating	NONE	NONE	Obspar update status	NONE	UPDATED
Data mode	VFAINT	VFAINT	CCD I0 on	N	N
Observation mode	POINTING	POINTING	CCD I1 on	N	N
[deg] Pointing RA	222.708037	222.7375223844157	CCD I2 on	N	N
[deg] Pointing Dec	35.561046	35.57415278711692	CCD I3 on	O1	Y
[deg] Pointing Roll	357.727540	357.8670151290643	CCD S0 on	N	N
[mm] SIM focus pos	-0.684267	-0.6828225247311905	CCD S1 on	O4	Y
[mm] SIM defocus	0	0.001444936568705701	CCD S2 on	O3	Y
[mm] SIM translation stage pos	-190.132523	-190.1425803651734	CCD S3 on	Y	Y
[mm] SIM translation stage offset	0	0.01005778216563158	CCD S4 on	O2	Y
[s] Observation start time (MET)	436947579.184000	436946313.50429	CCD S5 on	N	N
Observation start date	2011-11-06T06:18:33	2011-11-06T05:58:33	Number of optional ACIS chips dropped	0	0
[s] Observation end time (MET)	436978579.184000	436979295.95603	On-chip summing requested	N	N
Observation end date	2011-11-06T14:55:13	2011-11-06T15:08:15	Subarray requested	NONE	NONE
Read mode	TIMED	TIMED	Alternating exposures requested	N	N
			[s] Primary exposure time	0.000000	3.1

2.3 Aspect



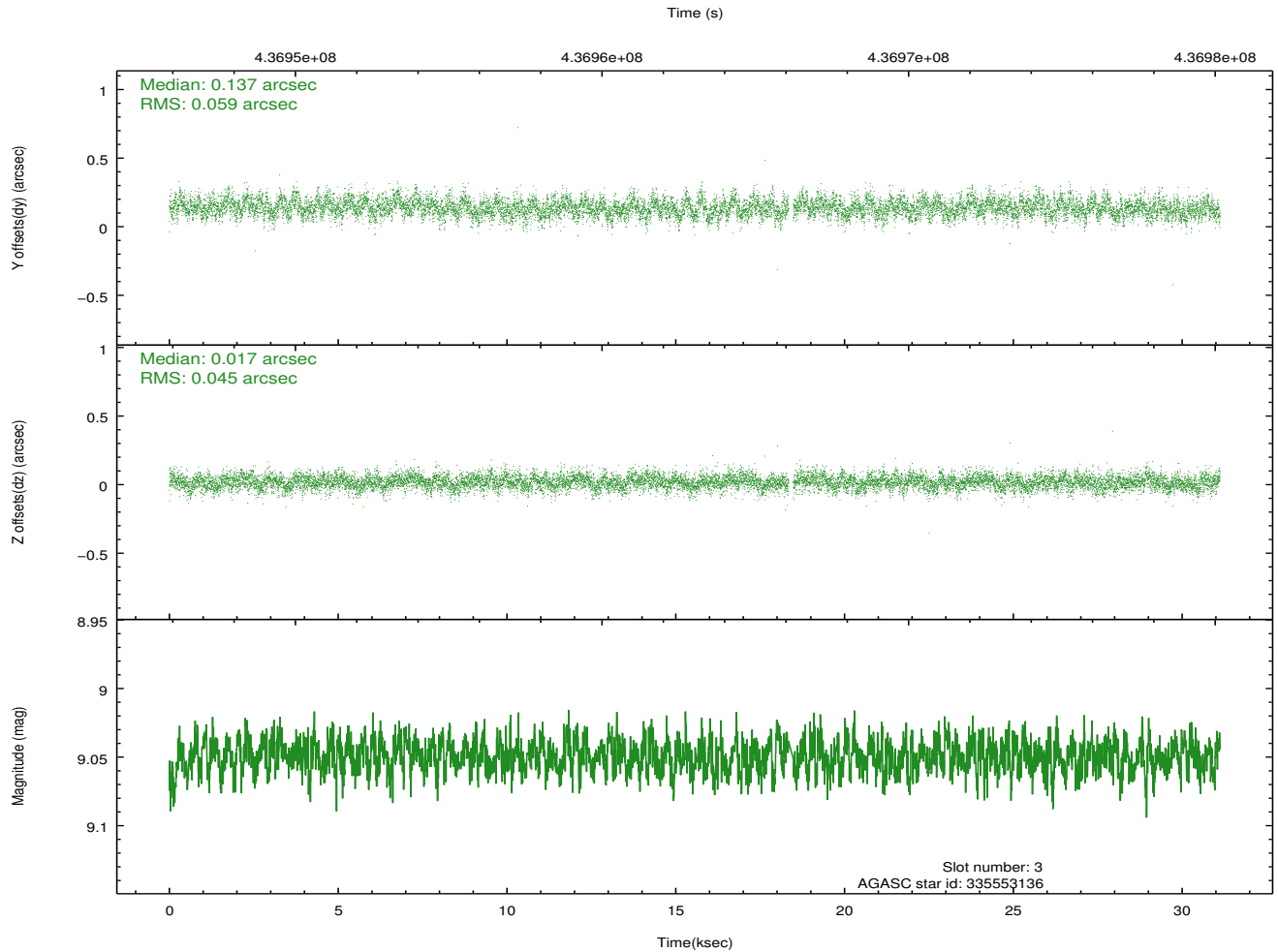
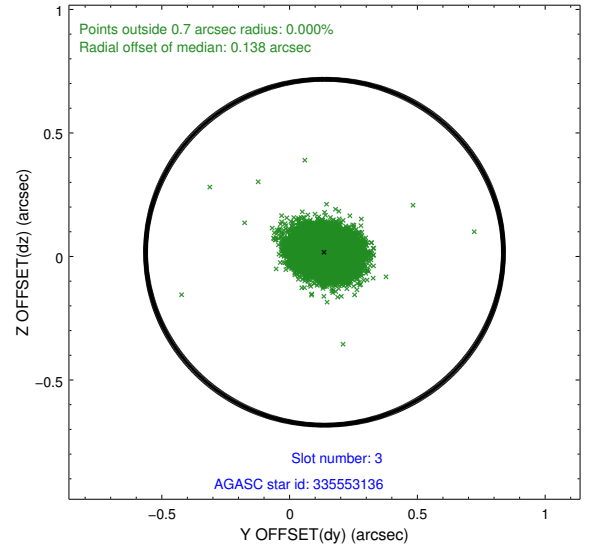
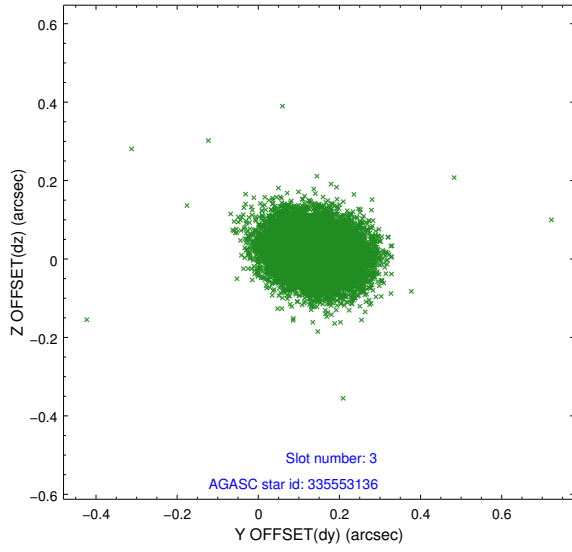


Slot Statistics

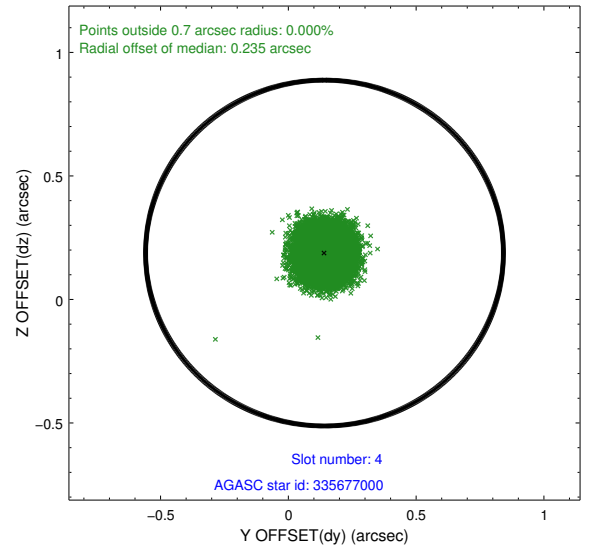
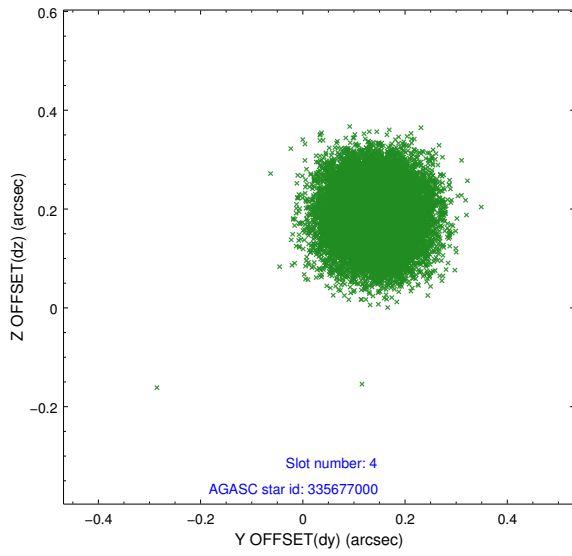
slot	status	id	mag	n_pts	med_dy	med_dz	dr1	dr2	ra	dec	mean_y	mean_z
0	FID	ACIS-S-2	6.99	7591	-0.114	-0.081	0.008	0.016	0.000000	0.000000	-762.16	-1734.43
1	FID	ACIS-S-4	7.07	7592	0.137	0.050	0.008	0.013	0.000000	0.000000	2151.39	174.04
2	FID	ACIS-S-6	7.21	7592	-0.052	0.038	0.009	0.014	0.000000	0.000000	400.03	811.54
3	GUIDE	335553136	9.05	15110	0.137	0.017	0.078	0.129	221.991838	35.844651	-2128.79	945.08
4	GUIDE	335677000	8.70	15181	0.141	0.188	0.083	0.130	222.355634	35.192008	-983.30	-1366.69
5	GUIDE	335678008	9.26	15168	-0.022	-0.051	0.086	0.142	223.466446	35.794719	2179.12	936.47
6	GUIDE	335678568	8.93	15180	-0.371	-0.080	0.086	0.135	223.324905	35.895778	1749.54	1281.24
7	GUIDE	335676144	8.88	15164	0.114	-0.071	0.089	0.142	222.194774	36.050358	-1563.30	1705.07

2.4 Star Slots

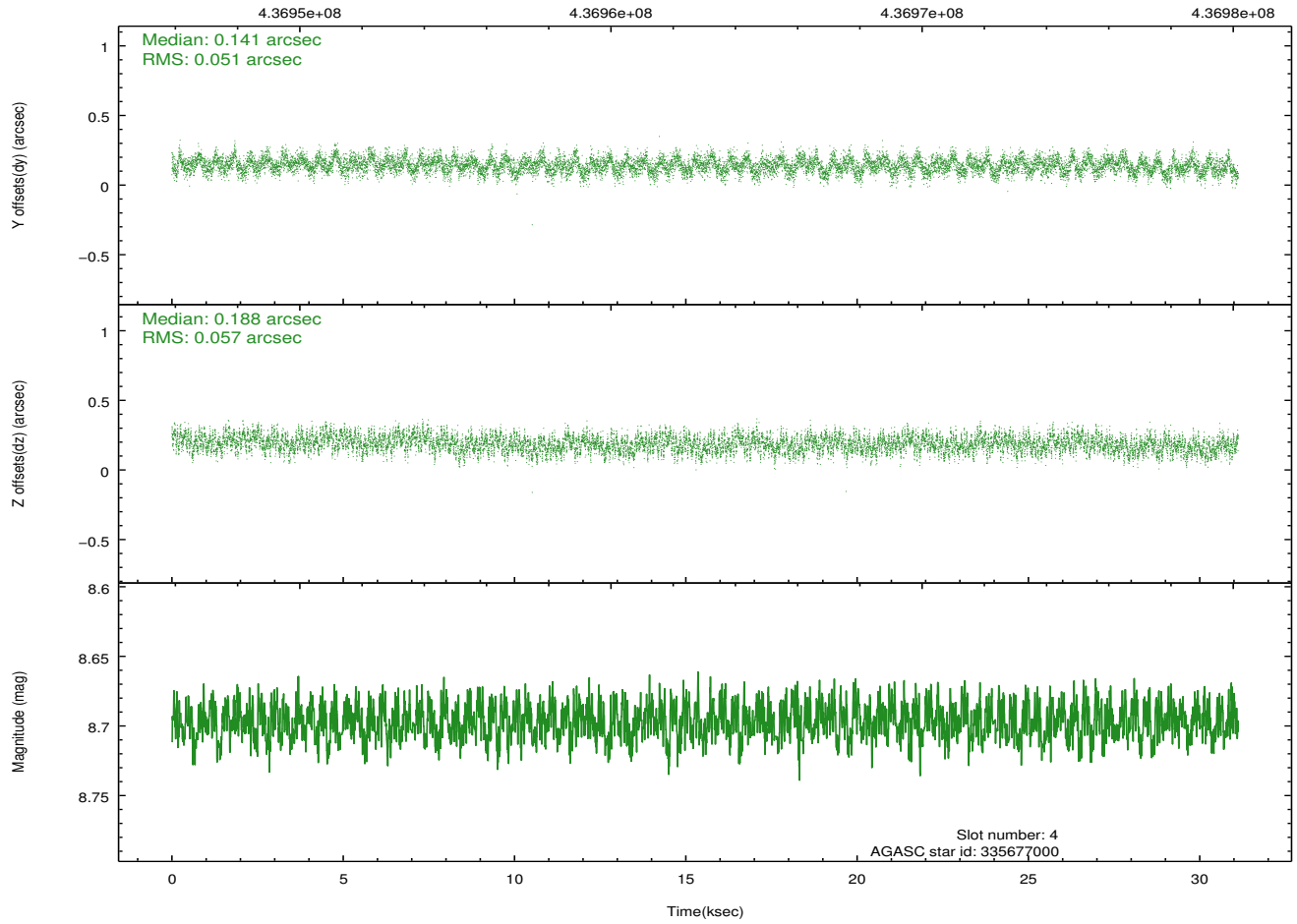
2.4.1 Slot 3



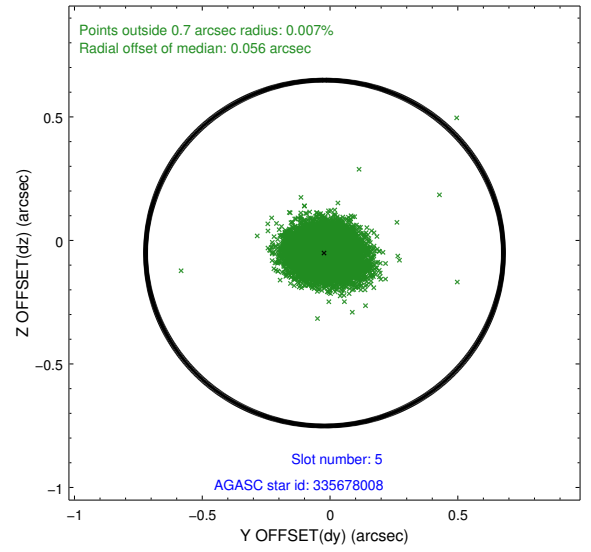
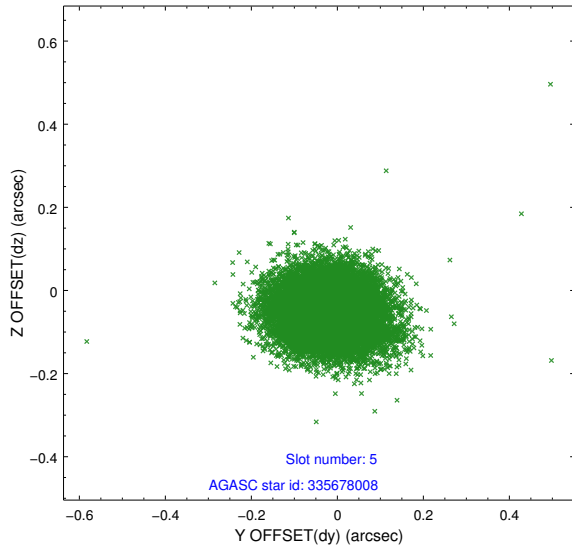
2.4.2 Slot 4



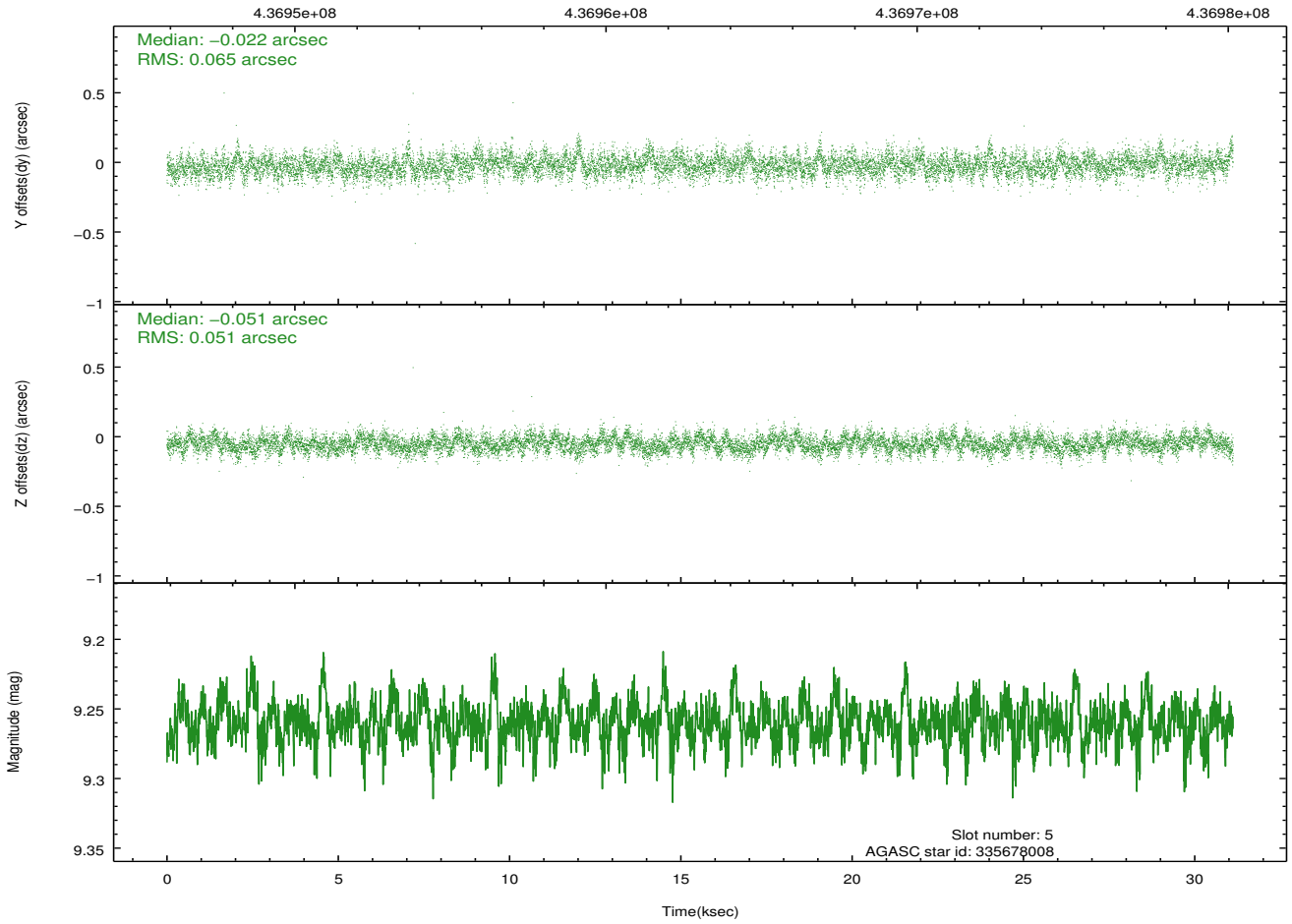
Time (s)



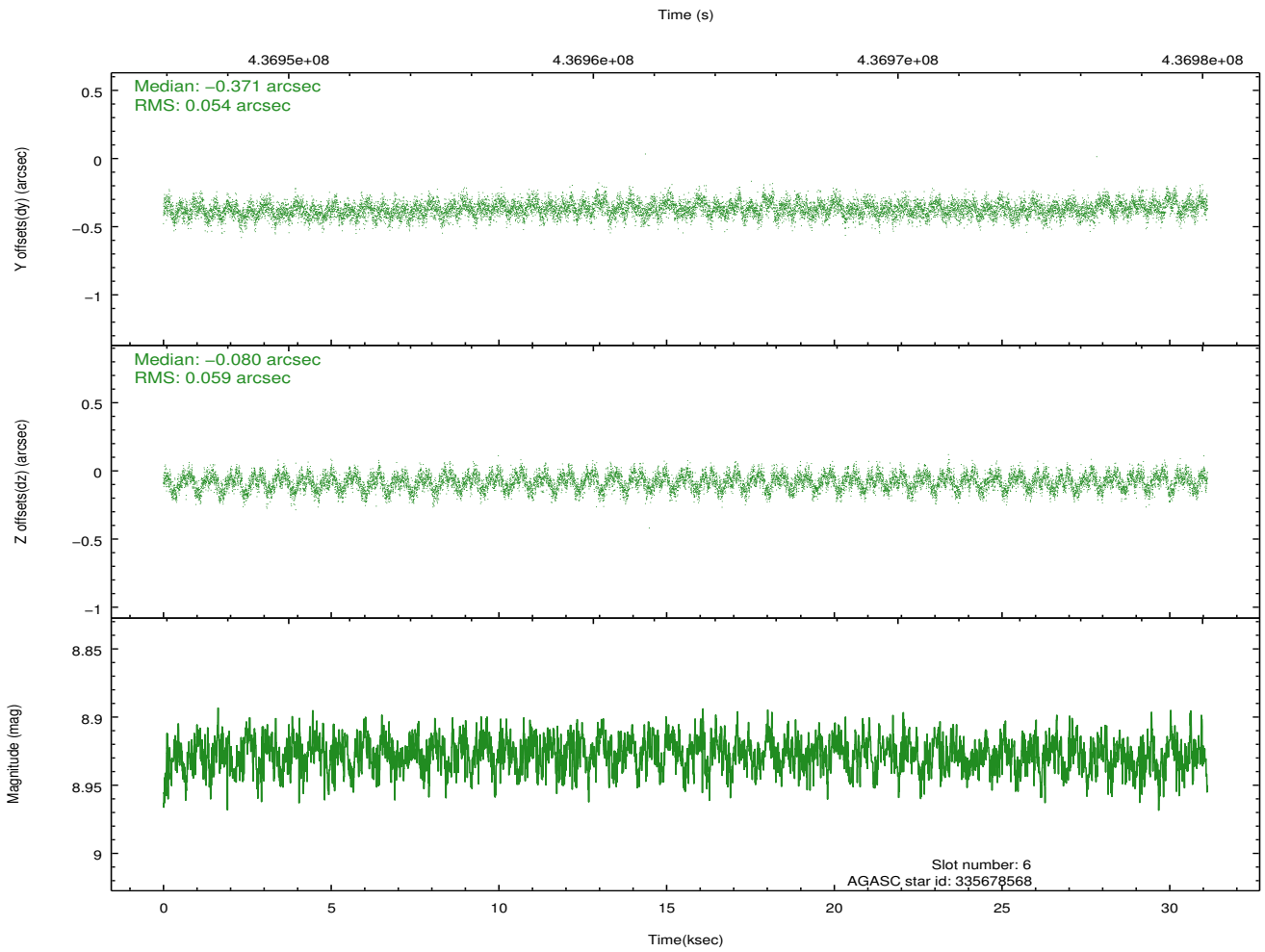
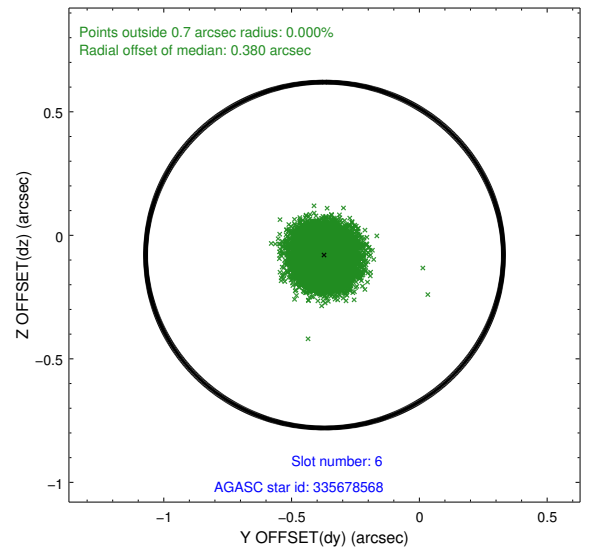
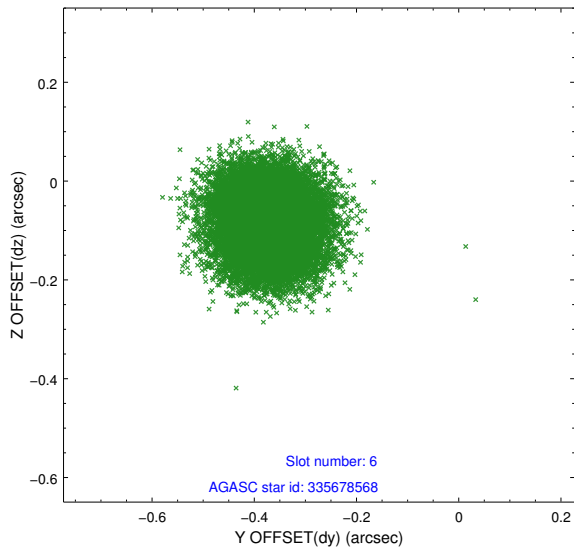
2.4.3 Slot 5



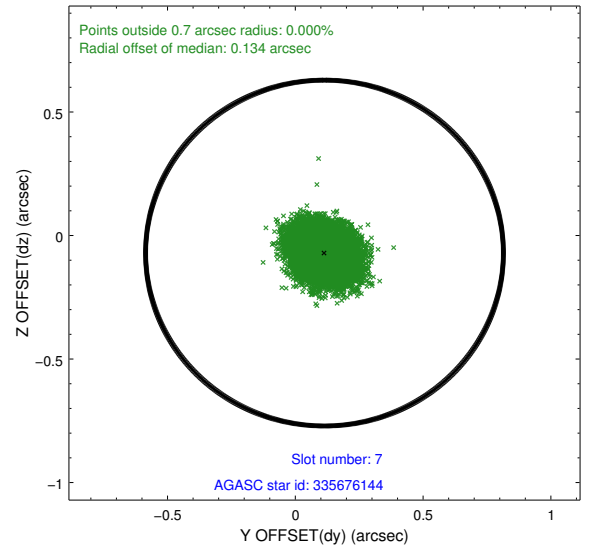
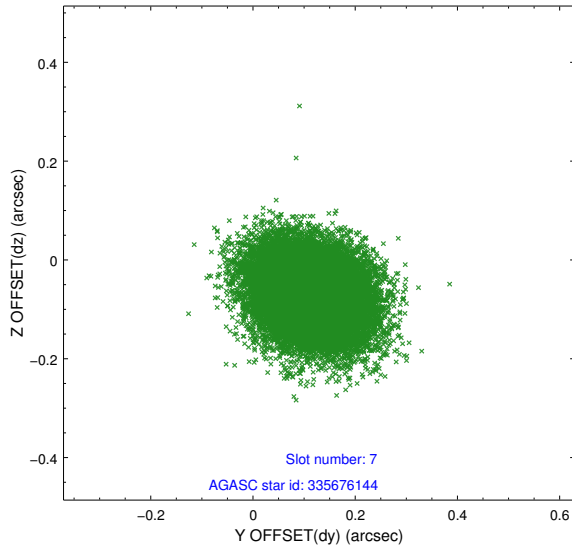
Time (s)



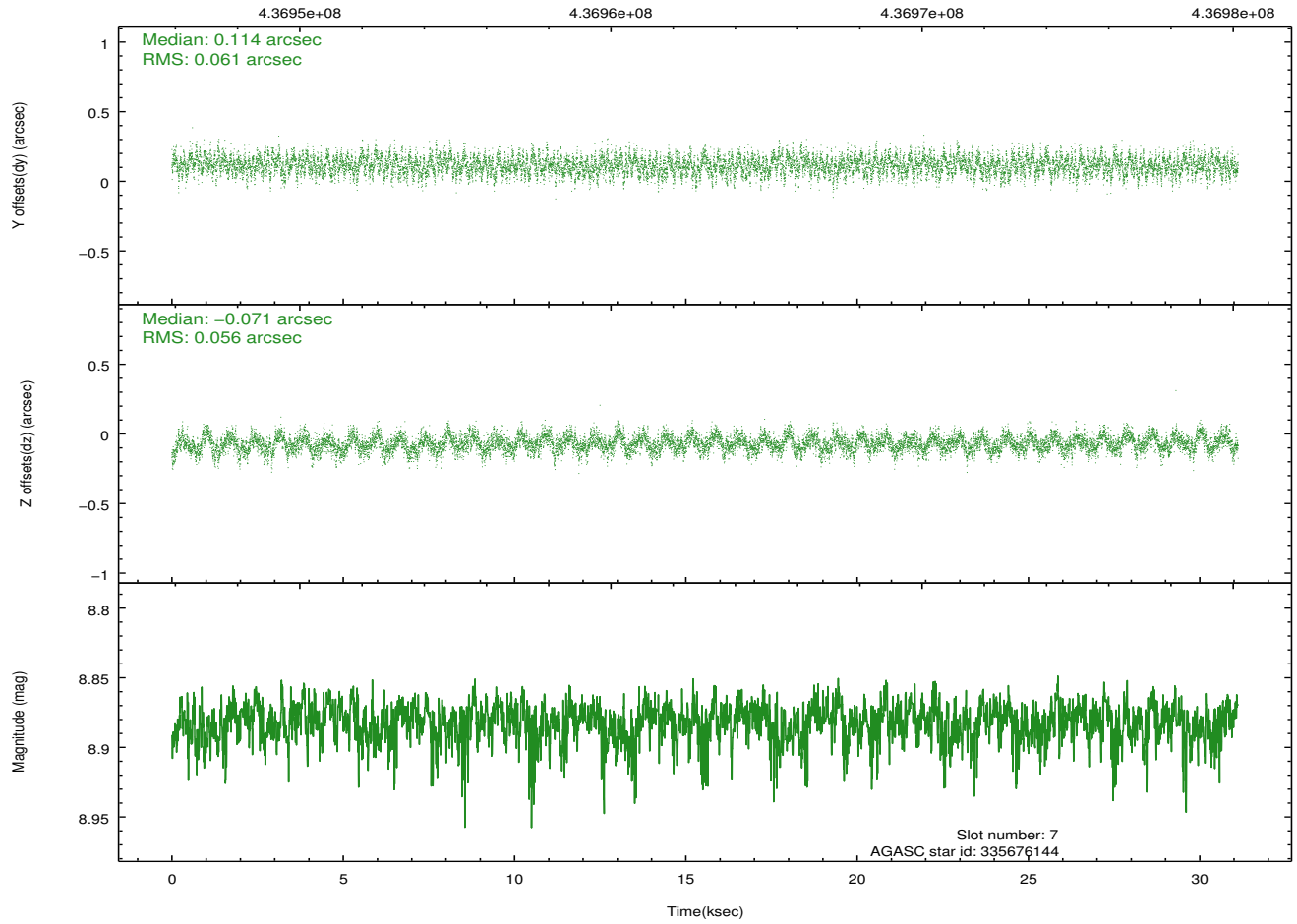
2.4.4 Slot 6



2.4.5 Slot 7

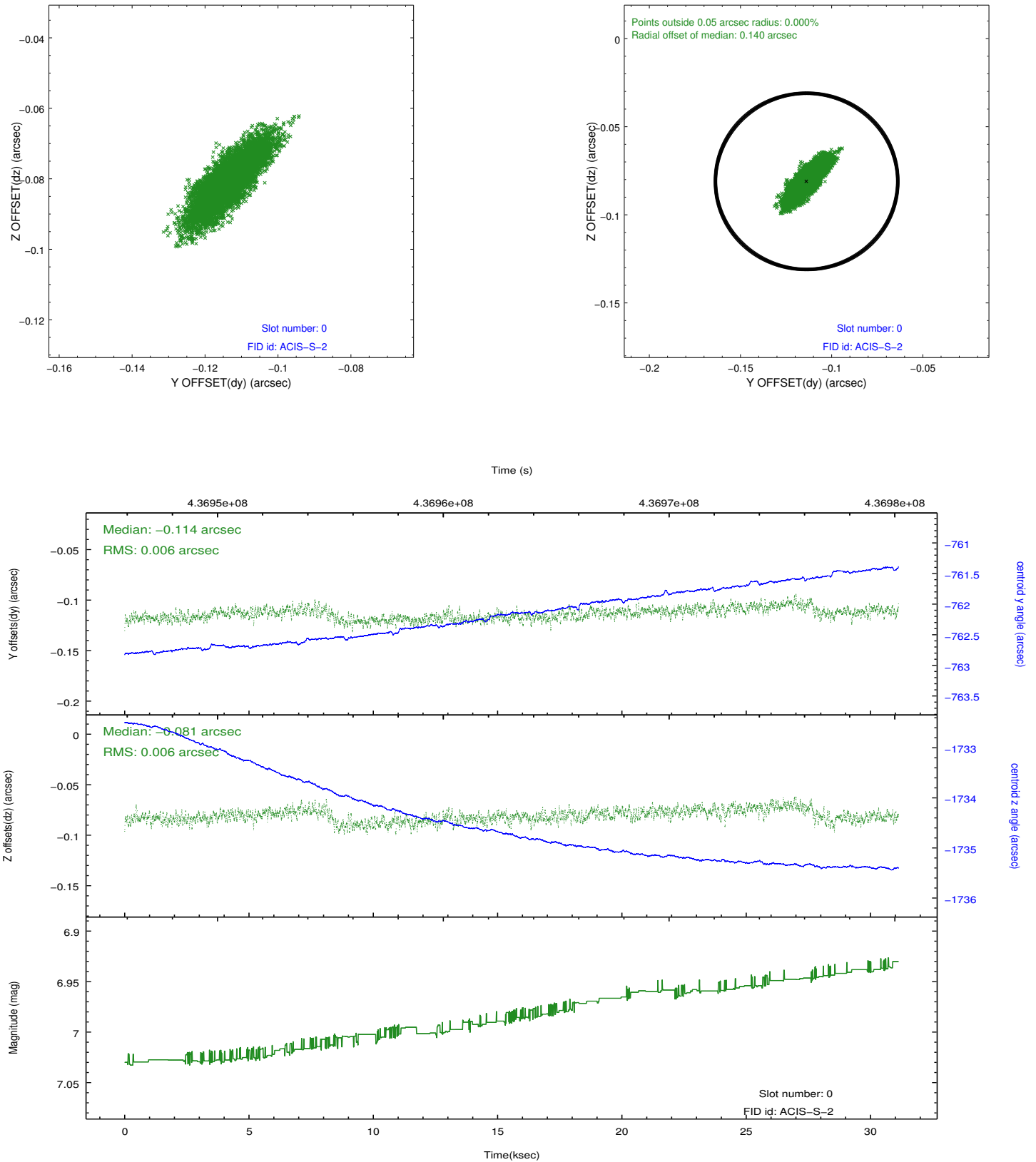


Time (s)

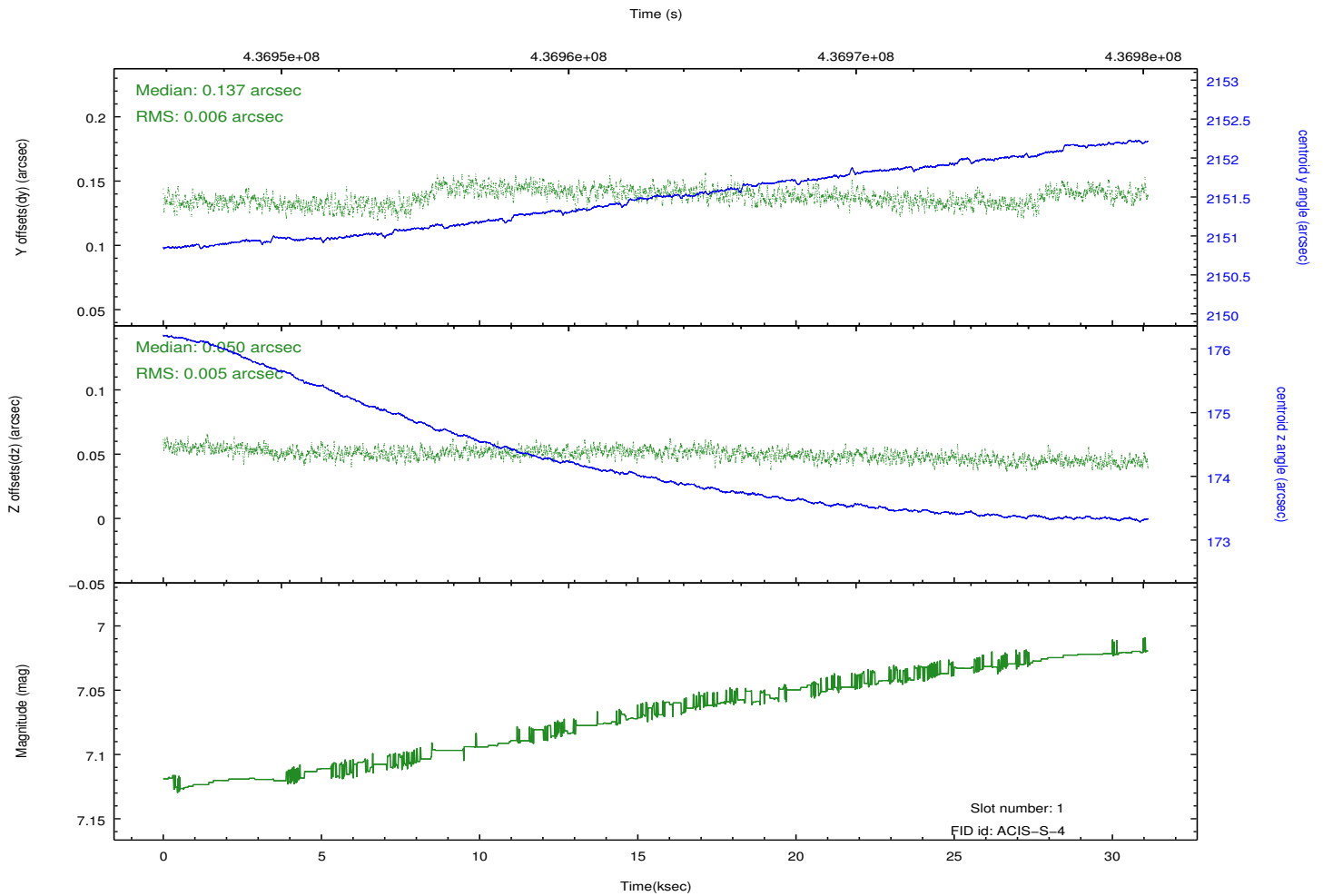
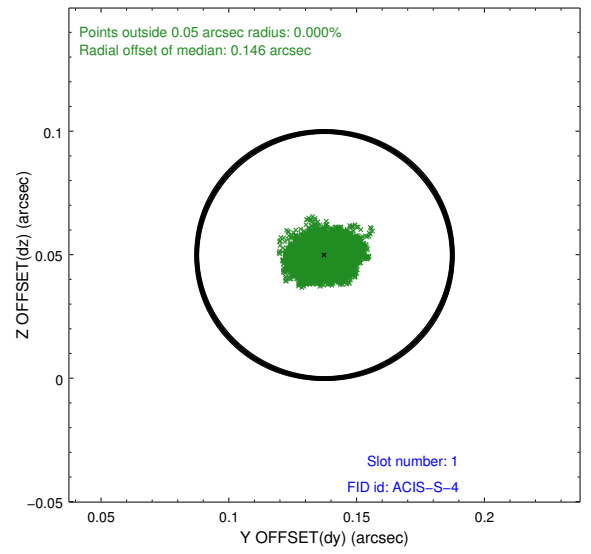
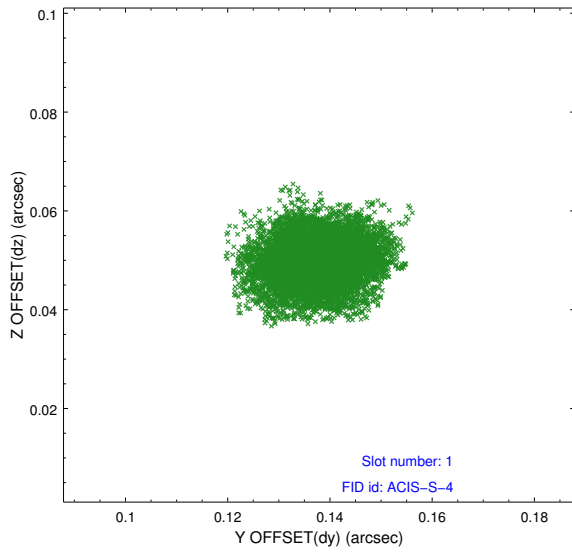


2.5 FID Slots

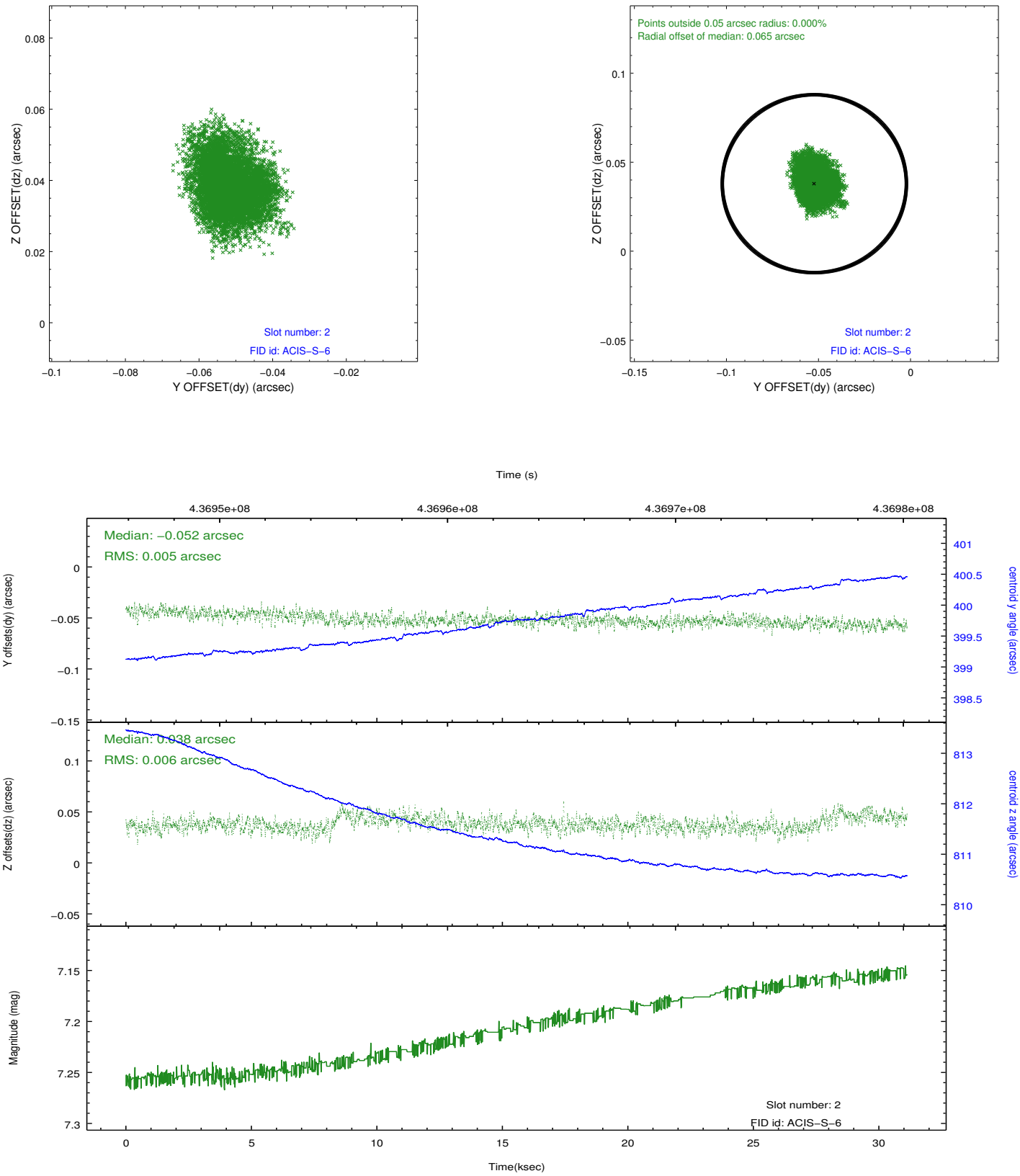
2.5.1 Slot 0



2.5.2 Slot 1



2.5.3 Slot 2



A Summary

A.1 Status

V&V Scientist	Jen Lauer
V&V Date (YYYY-MM-DD)	2012.02.28
V&V Edition	1
V&V Disposition and Status	OK
V&V Charge Time	31.038893739939

A.2 Comments

Joint proposal: NRAO