

V&V Reference Report

L2 ASCDS Version : 8.4.3

Observation 13950 - L2 Version 1
Chandra X-Ray Center

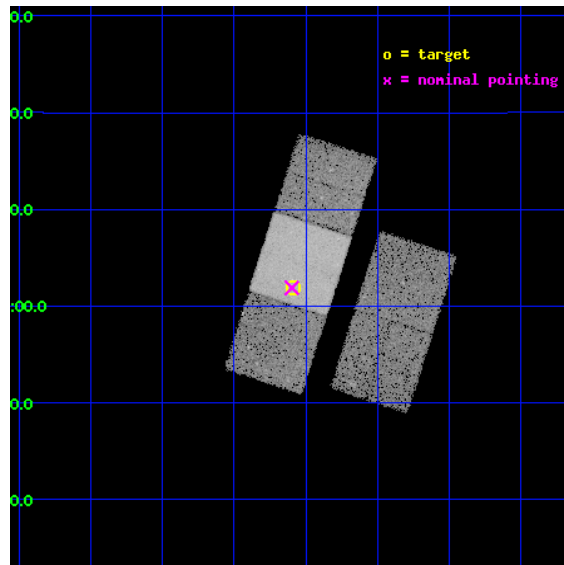
L2 Processing Date : Feb 26 2012

Contents

1	Front	2
2	OBI	3
2.1	OBI	3
2.1.1	Images	3
2.1.2	Bias	3
2.1.3	Parameters	4
2.1.4	Events	4
2.2	Compared Parameters	5
2.3	Aspect	6
2.4	Star Slots	9
2.4.1	Slot 3	9
2.4.2	Slot 4	10
2.4.3	Slot 5	11
2.4.4	Slot 6	12
2.4.5	Slot 7	13
2.5	FID Slots	14
2.5.1	Slot 0	14
2.5.2	Slot 1	15
2.5.3	Slot 2	16
A	Summary	17
A.1	Status	17
A.2	Comments	17

1 Front

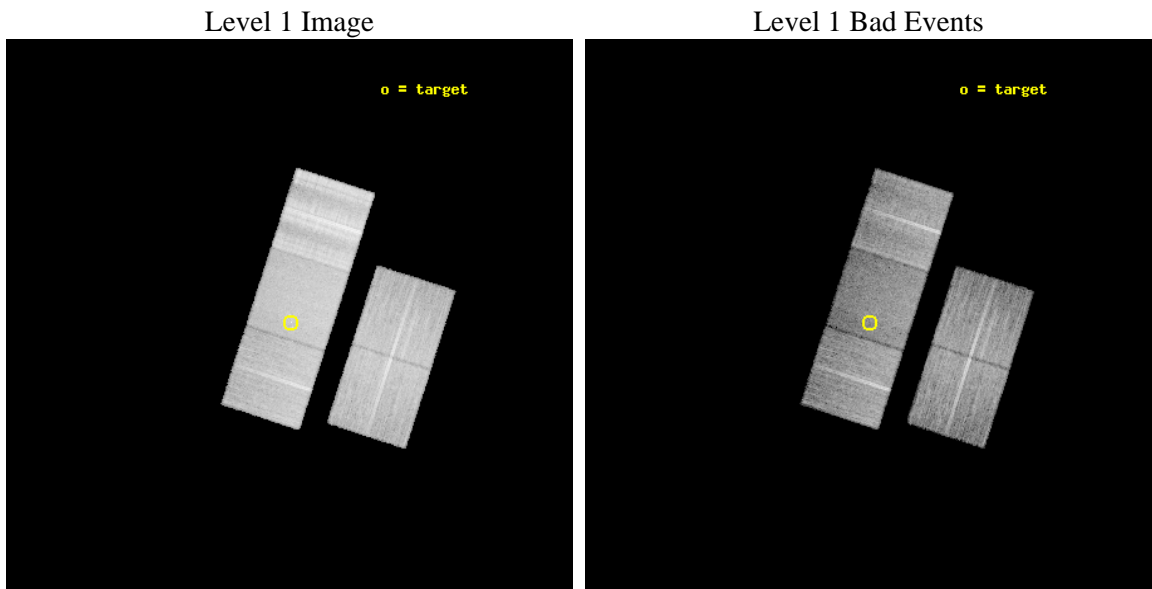
seq_num	702672	Sequence number
obs_id	13950	Observation id
title	Identifying Analogs of NGC 6240: Galaxies with Dual Supermassive Black Holes	Proposal title
observer	Dr. Julia Comerford	Principal investigator
object	SDSS J084135.09+010156.3	Source name
dtcycle	0	
cycle	P	events from which exps? Prim/Second/Both
ra_targ	130.39625	Observer's specified target RA [deg]
dec_targ	1.032306	Observer's specified target Dec [deg]
ra_nom	130.39915658142	Nominal RA [deg]
dec_nom	1.0315436204146	Nominal Dec [deg]
roll_nom	287.91375118979	Nominal Roll [deg]
revision	1	Processing version of data
ontime	20063.200154305	Sum of GTIs [s]
livetime	19801.059673975	Livetime [s]
ontime2	20063.200154305	Sum of GTIs [s]
ontime3	20060.05911392	Sum of GTIs [s]
ontime6	20060.05911392	Sum of GTIs [s]
ontime7	20063.200154305	Sum of GTIs [s]
ontime8	20063.200154305	Sum of GTIs [s]
l2events	123756	Number of level 2 events



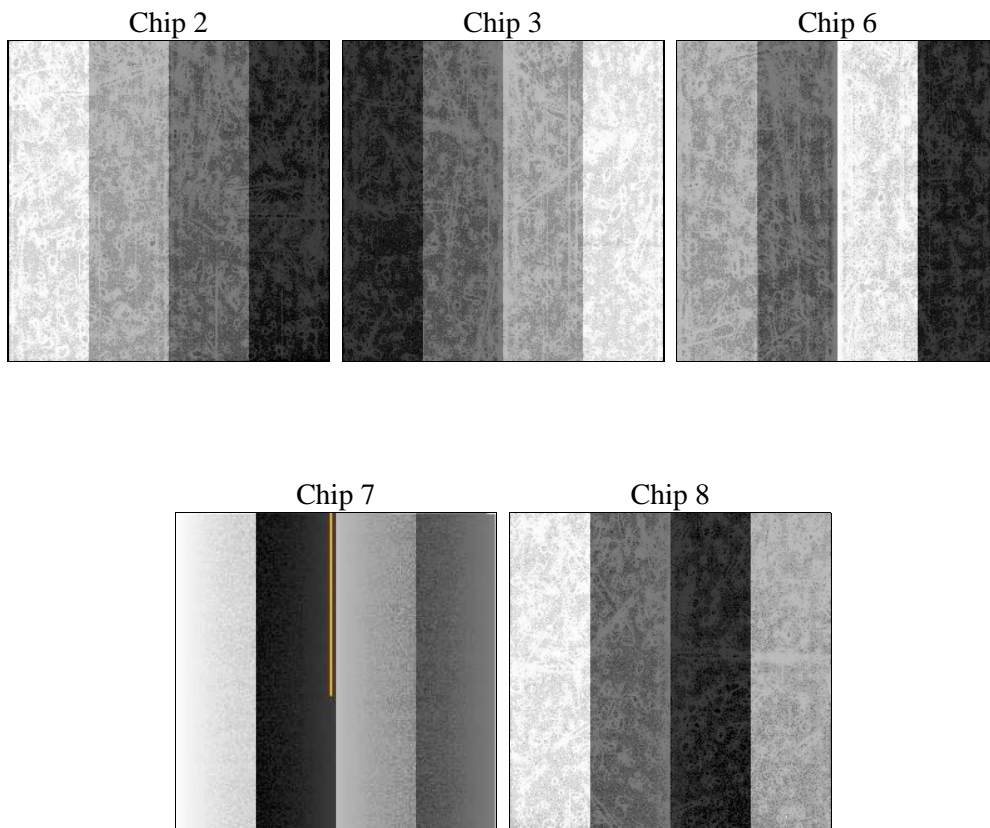
2 OBI

2.1 OBI

2.1.1 Images



2.1.2 Bias



2.1.3 Parameters

obi_num	0	Obi number	sched_exp_time	20000.000000	[s] Scheduled observation exposure time
ascdsver	8.4.3	Processing system revision	ontime	20063.200154305	Sum of GTIs [s]
caldbver	4.4.8	 	ontime2	20063.200154305	Sum of GTIs [s]
date	2012-02-26T15:20:47	Date and time of file creation	ontime3	20060.05911392	Sum of GTIs [s]
revision	1	Processing version of data	ontime6	20060.05911392	Sum of GTIs [s]
			ontime7	20063.200154305	Sum of GTIs [s]
			ontime8	20063.200154305	Sum of GTIs [s]
			l1events	817144	Number of level 1 events

2.1.4 Events

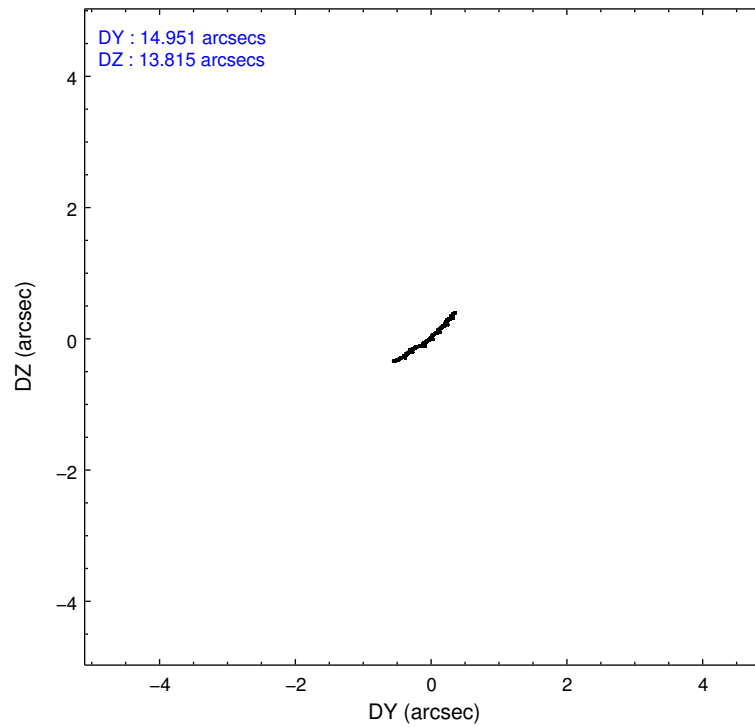
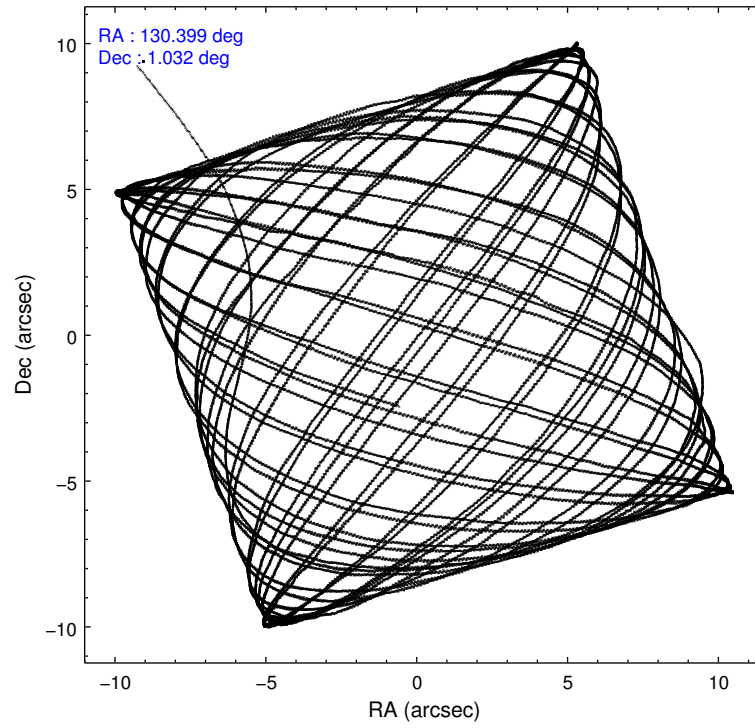
	ccd 2	ccd 3	ccd 6	ccd 7	ccd 8
level 1 events	137670	132422	143866	166083	237103
rejected events	121687	118885	127353	92890	136151
rejected %	88%	89%	88%	55%	57%

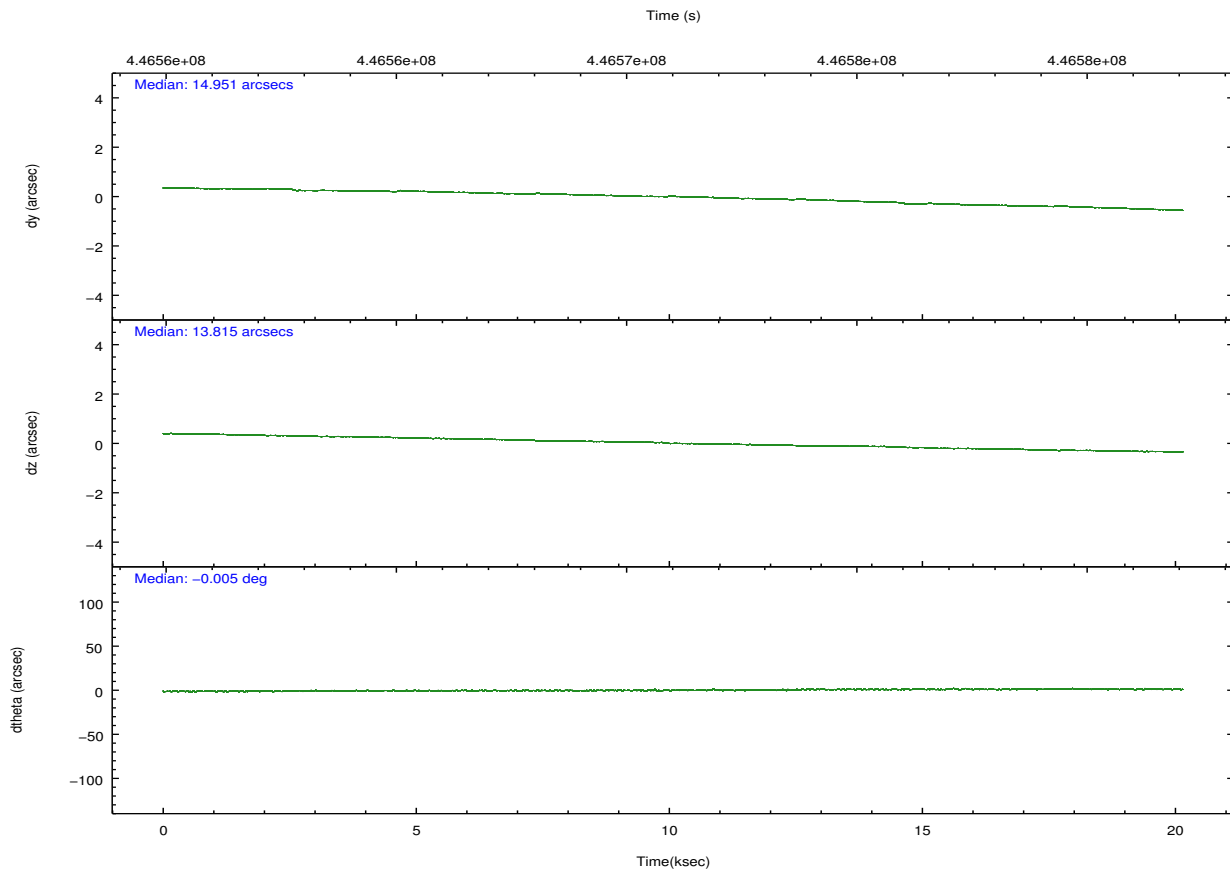
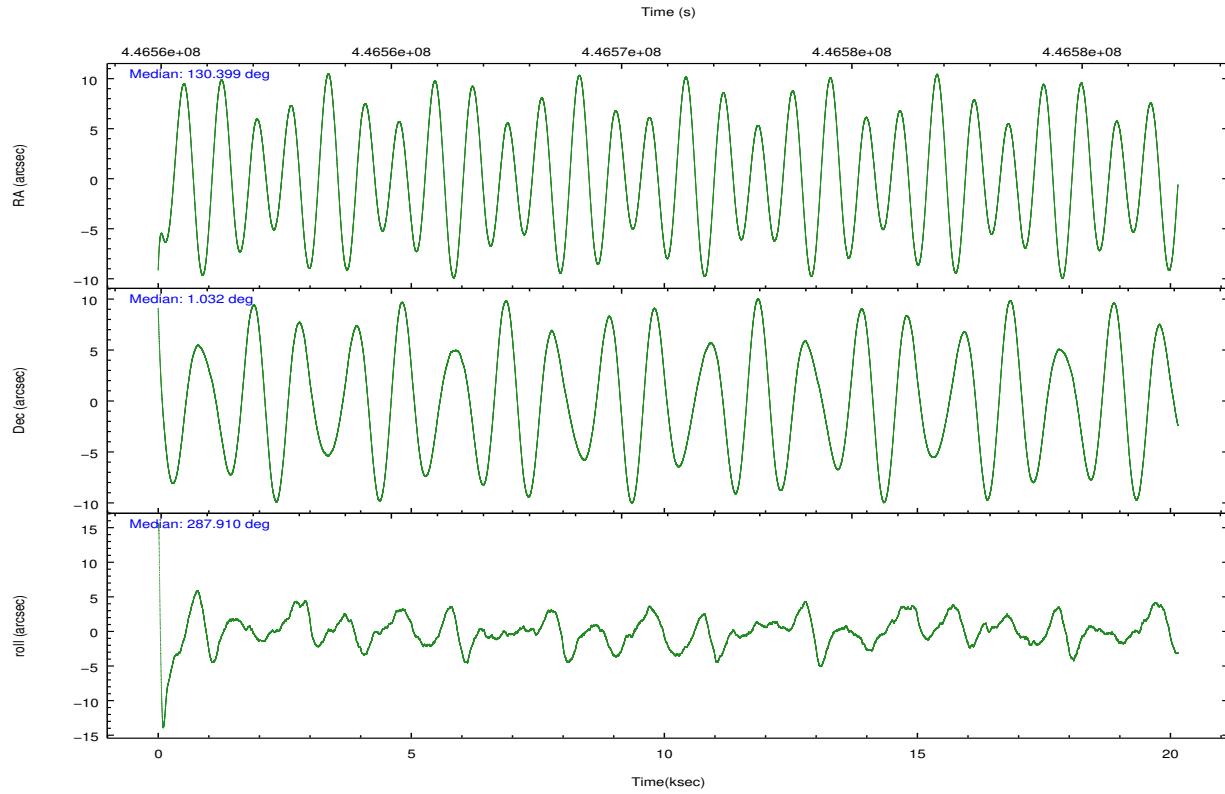
	ccd 2	ccd 3	ccd 6	ccd 7	ccd 8
grade 0 events	5706	4731	5820	6683	27822
	4%	3%	4%	4%	11%
grade 1 events	74	74	74	237	255
	0%	0%	0%	0%	0%
grade 2 events	4175	3046	4123	15526	18944
	3%	2%	2%	9%	7%
grade 3 events	1477	1414	1543	6310	14940
	1%	1%	1%	3%	6%
grade 4 events	1608	1479	1538	6252	13262
	1%	1%	1%	3%	5%
grade 5 events	5187	6009	6136	16928	9956
	3%	4%	4%	10%	4%
grade 6 events	3020	2869	3490	38434	25987
	2%	2%	2%	23%	10%
grade 7 events	116423	112800	121142	75713	125937
	84%	85%	84%	45%	53%

2.2 Compared Parameters

Parameter	Planned	Actual	Parameter	Planned	Actual
Instrument	ACIS	ACIS	Obspar format version number	7	7
Detector	ACIS-23678	ACIS-23678	Obspar file type	PREDICTED	ACTUAL
Grating	NONE	NONE	Obspar update status	NONE	UPDATED
Data mode	FAINT	FAINT	CCD I0 on	N	N
Observation mode	POINTING	POINTING	CCD I1 on	N	N
[deg] Pointing RA	130.378631	130.3991565814209	CCD I2 on	O2	Y
[deg] Pointing Dec	1.049591	1.031543620414645	CCD I3 on	O1	Y
[deg] Pointing Roll	287.757471	287.9137511897856	CCD S0 on	N	N
[mm] SIM focus pos	-0.684267	-0.6828225247311905	CCD S1 on	N	N
[mm] SIM defocus	0	0.001444936568705701	CCD S2 on	Y	Y
[mm] SIM translation stage pos	-190.132523	-190.1425803651734	CCD S3 on	Y	Y
[mm] SIM translation stage offset	0	0.01005778216563158	CCD S4 on	O3	Y
[s] Observation start time (MET)	446561076.184000	446559434.36204	CCD S5 on	N	N
Observation start date	2012-02-25T12:43:30	2012-02-25T12:17:14	Number of optional ACIS chips dropped	0	0
[s] Observation end time (MET)	446581076.184000	446581852.13823	On-chip summing requested	N	N
Observation end date	2012-02-25T18:16:50	2012-02-25T18:30:52	Subarray requested	NONE	NONE
Read mode	TIMED	TIMED	Alternating exposures requested	N	N
			[s] Primary exposure time	0.000000	3.1

2.3 Aspect



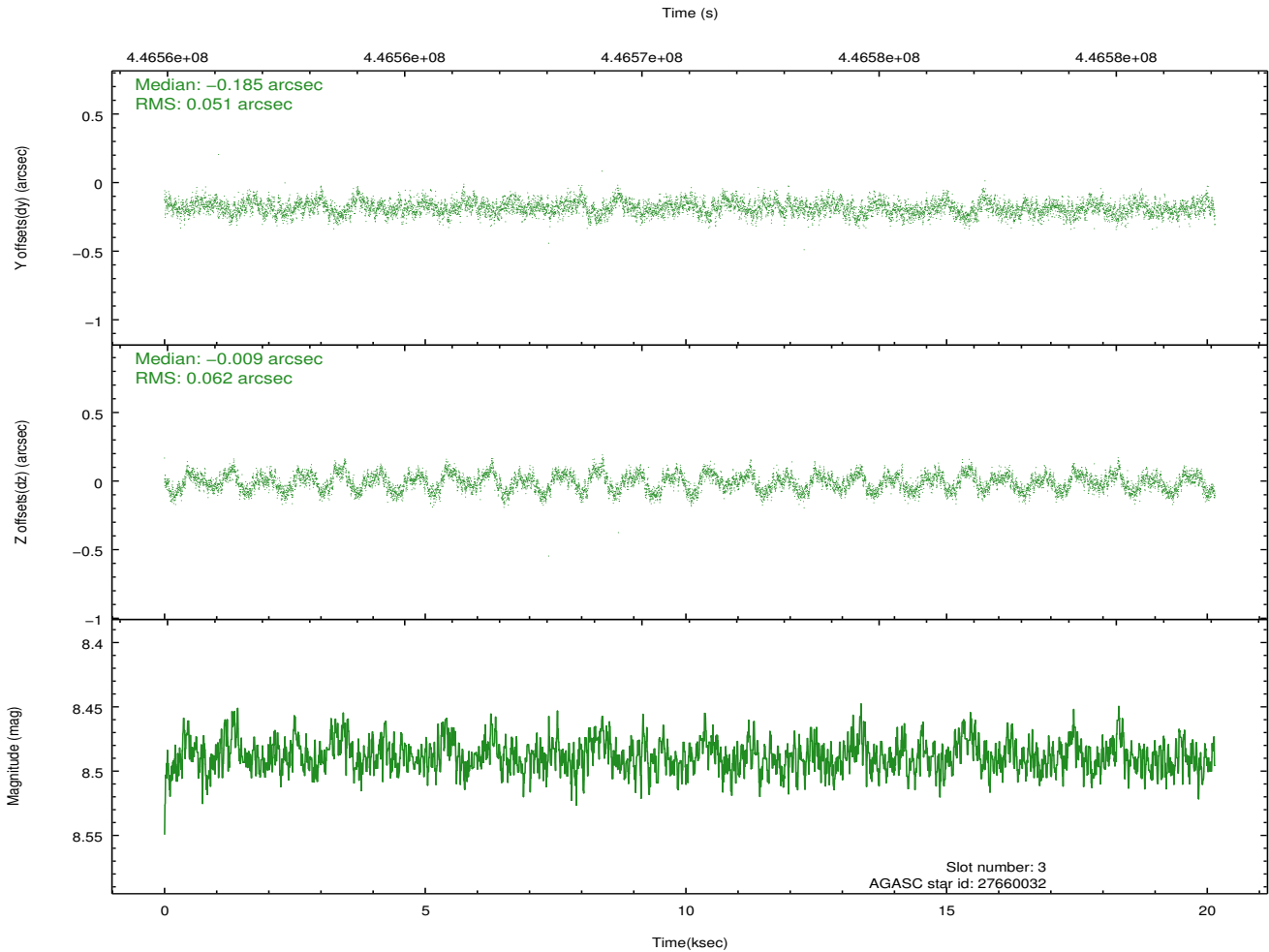
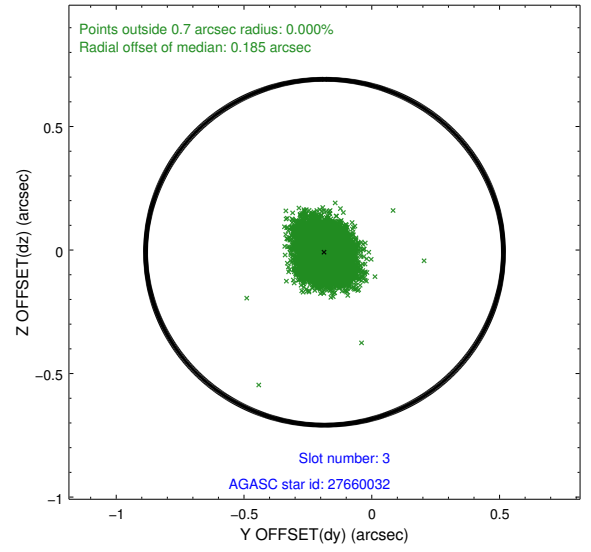
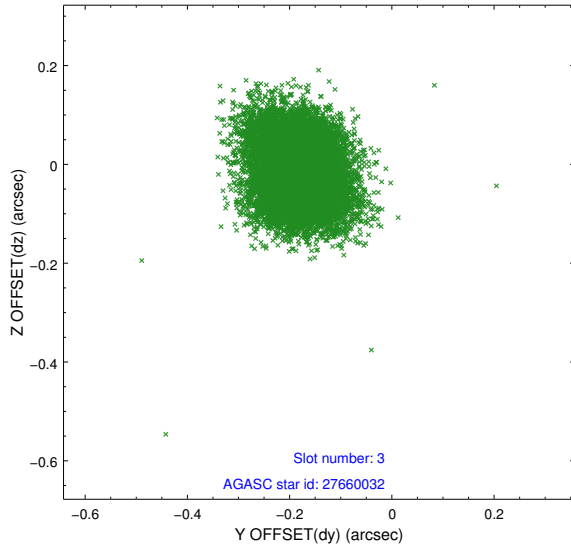


Slot Statistics

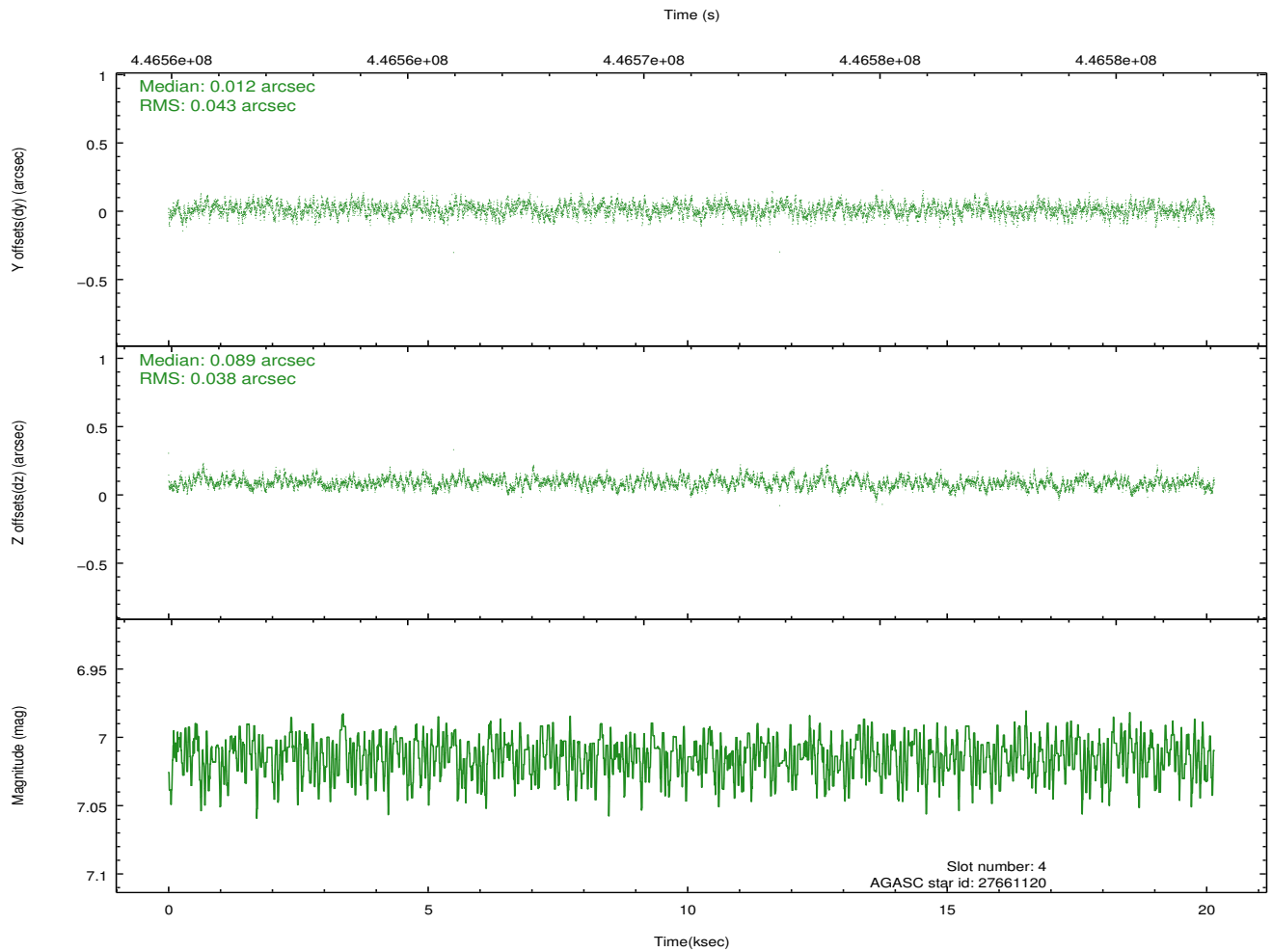
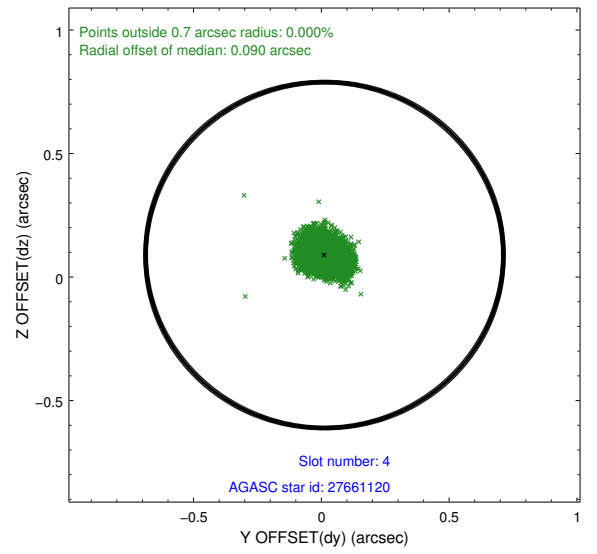
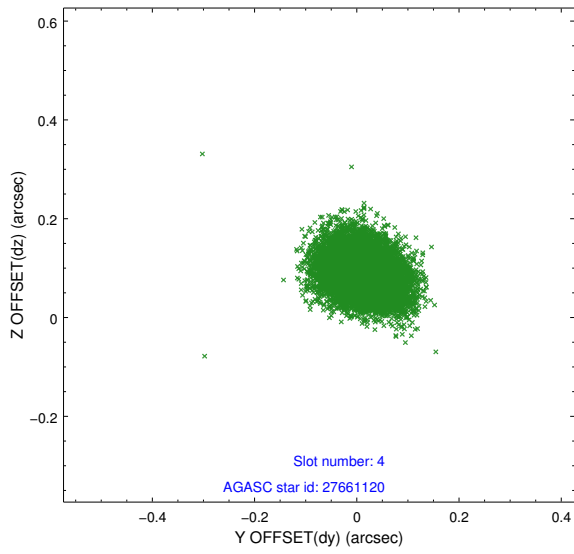
slot	status	id	mag	n_pts	med_dy	med_dz	dr1	dr2	ra	dec	mean_y	mean_z
0	FID	ACIS-S-1	7.06	4915	0.030	-0.002	0.016	0.027	0.000000	0.000000	928.17	-1730.77
1	FID	ACIS-S-4	7.07	4915	0.175	-0.010	0.007	0.011	0.000000	0.000000	2145.84	173.17
2	FID	ACIS-S-5	7.10	4915	-0.232	0.022	0.018	0.030	0.000000	0.000000	-1820.72	167.05
3	GUIDE	27660032	8.49	9820	-0.185	-0.009	0.087	0.134	130.445319	1.544042	-1622.04	771.56
4	GUIDE	27661120	7.01	9829	0.012	0.089	0.061	0.098	130.318752	0.958097	248.04	-305.34
5	GUIDE	27661672	8.67	9826	0.115	0.003	0.083	0.132	129.855960	1.161459	-956.77	-1668.95
6	GUIDE	27666552	8.71	9829	-0.083	-0.088	0.092	0.147	131.061638	0.591401	2320.55	1838.74
7	GUIDE	27668208	9.94	9793	0.142	0.001	0.172	0.278	131.175561	0.737754	1943.99	2389.09

2.4 Star Slots

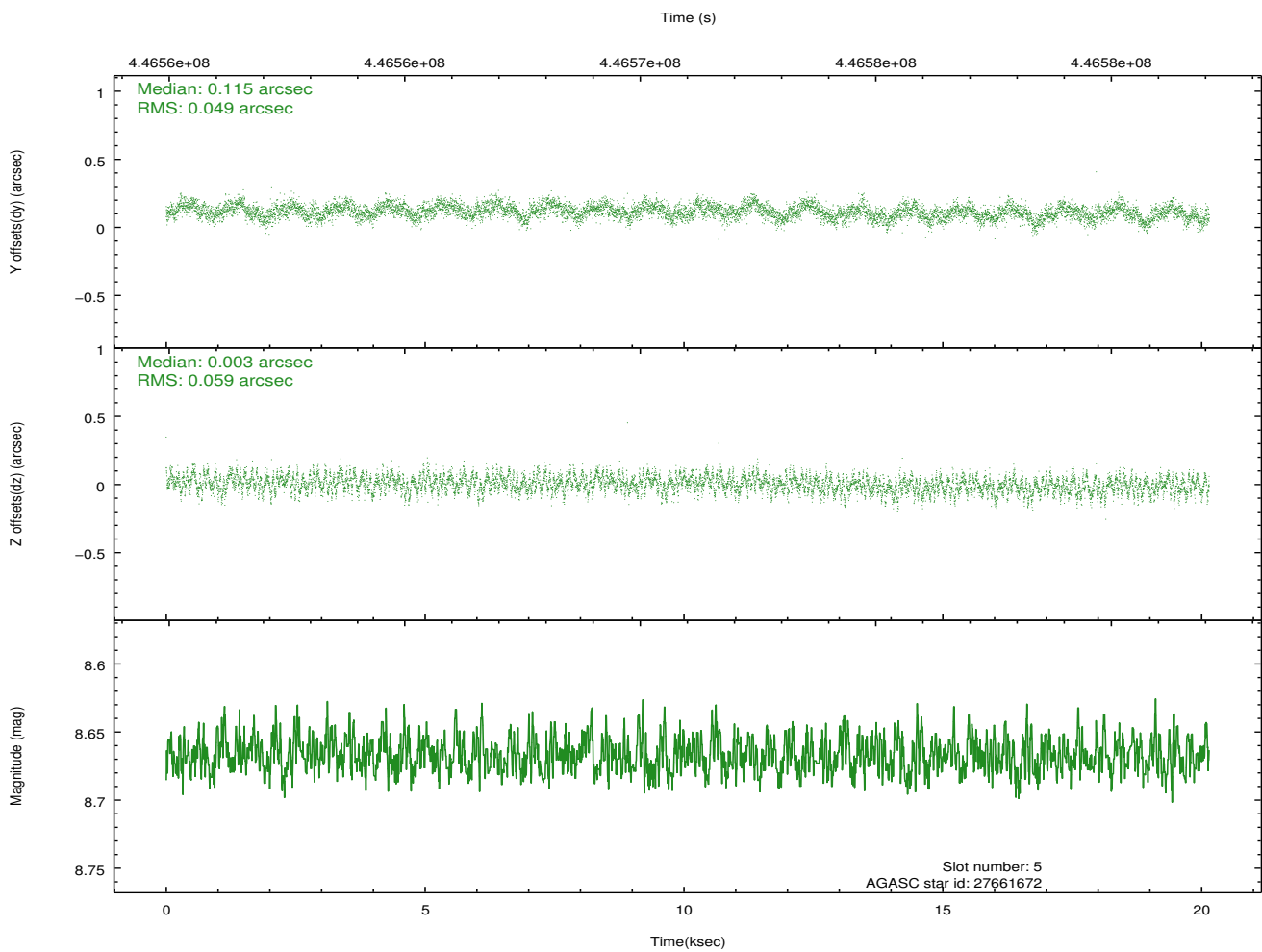
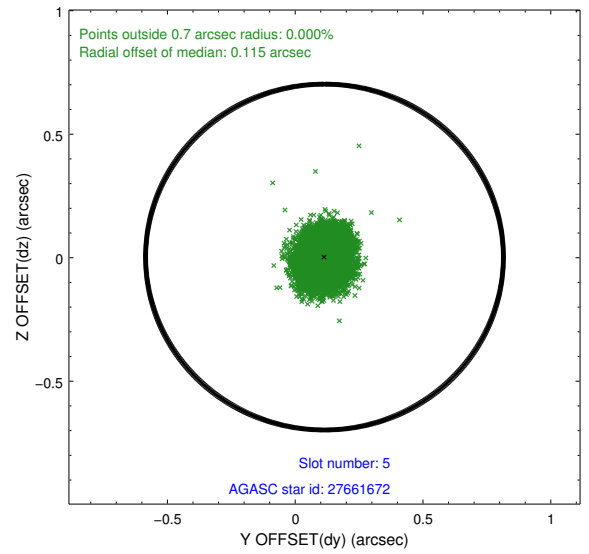
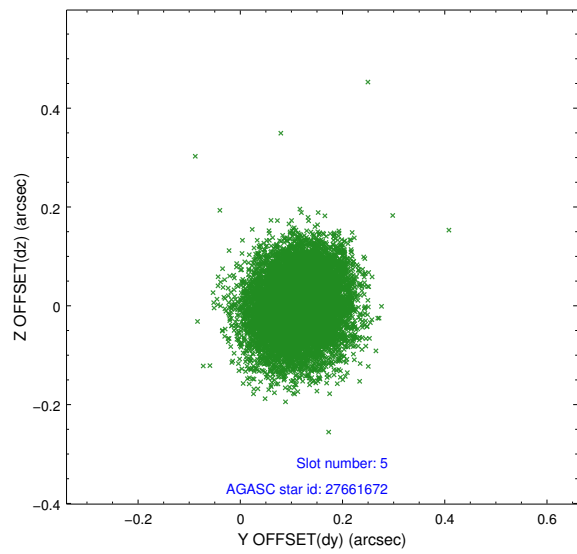
2.4.1 Slot 3



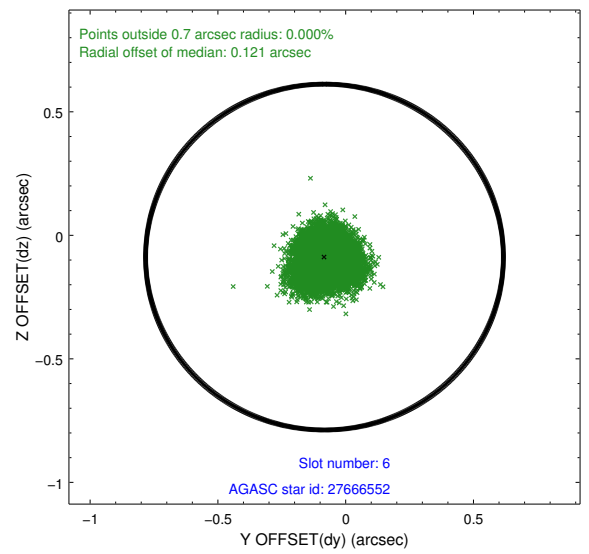
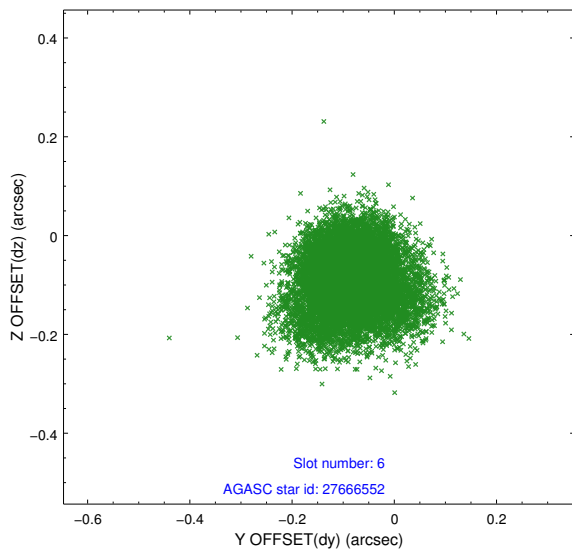
2.4.2 Slot 4



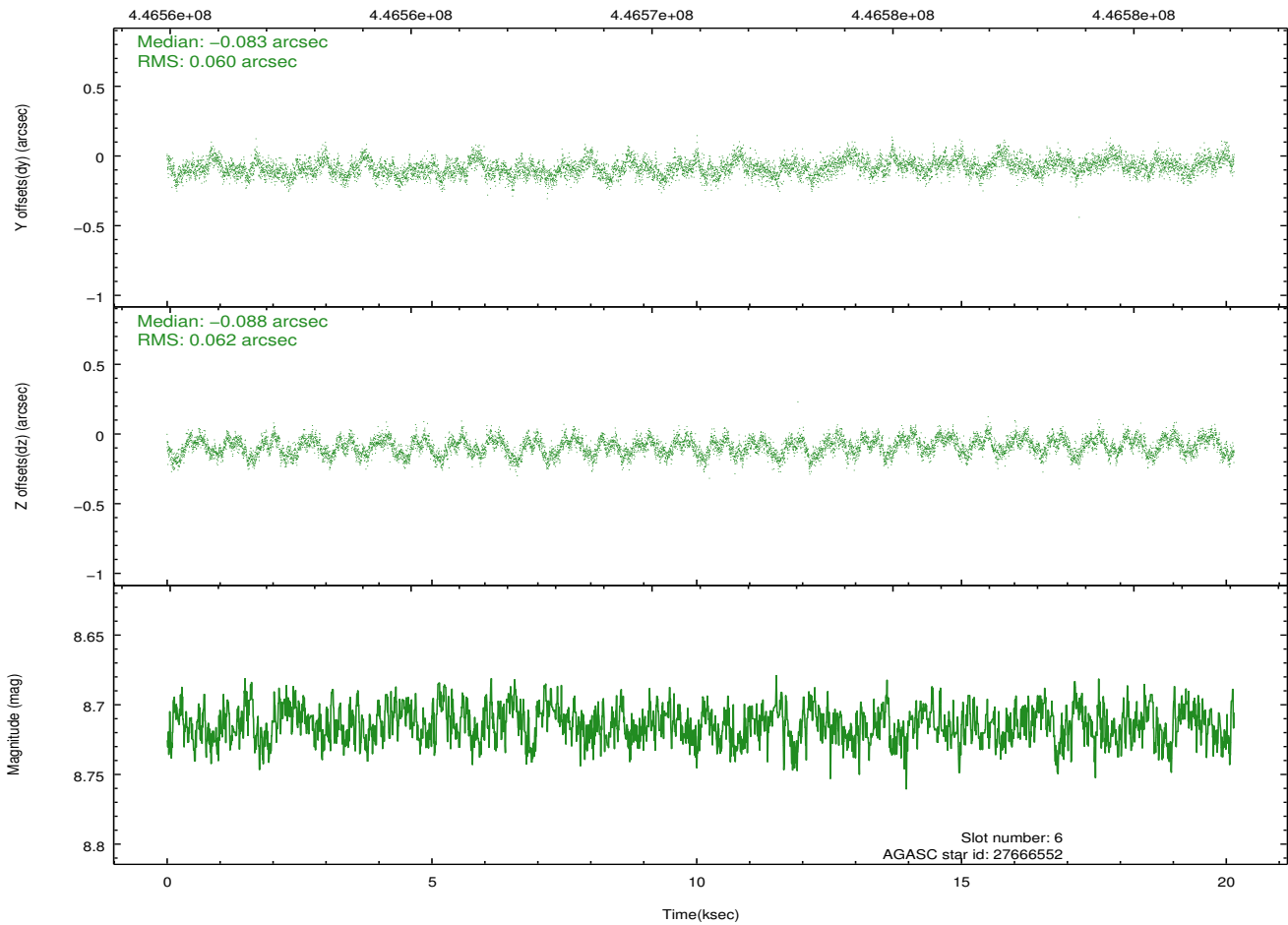
2.4.3 Slot 5



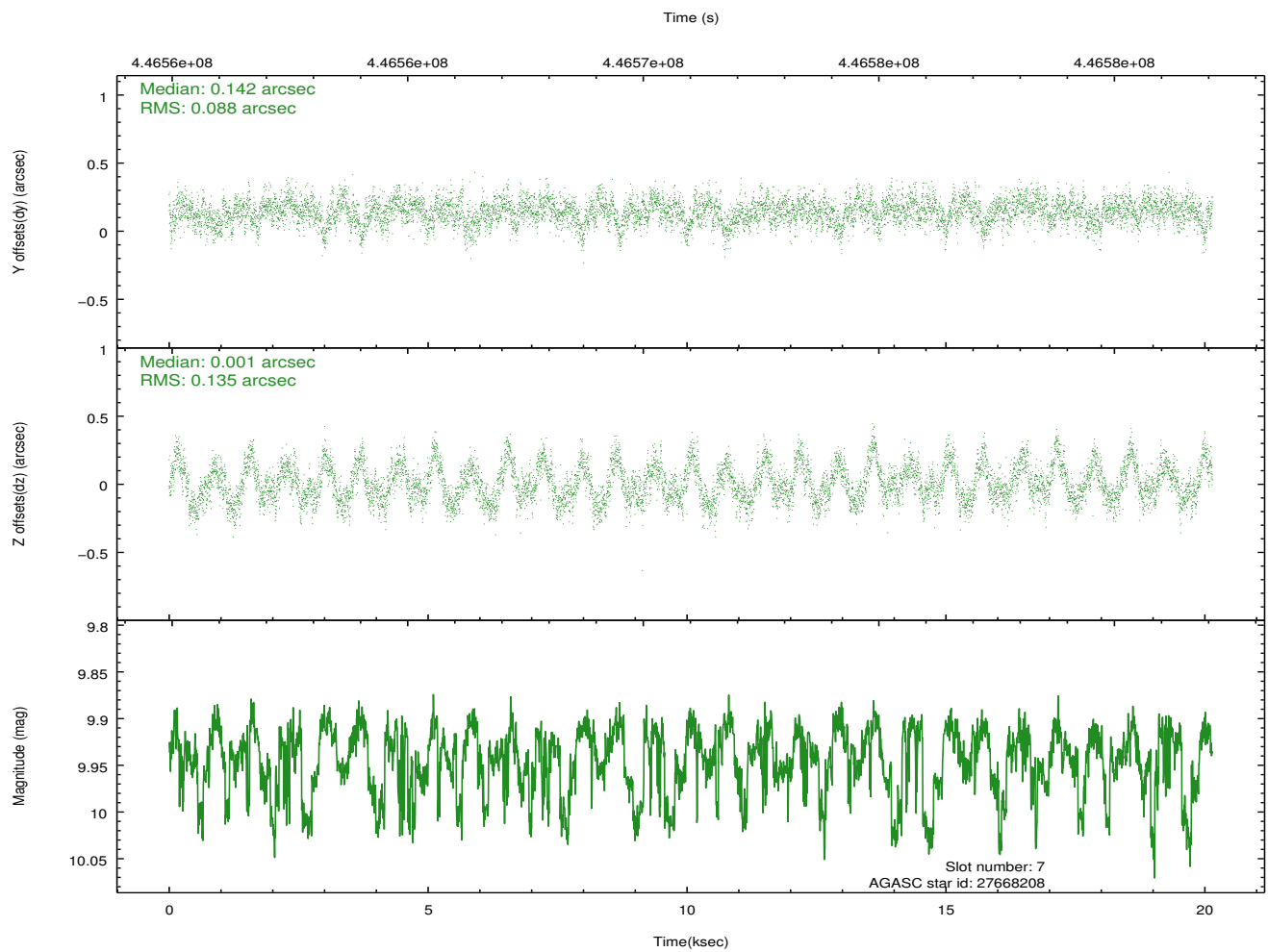
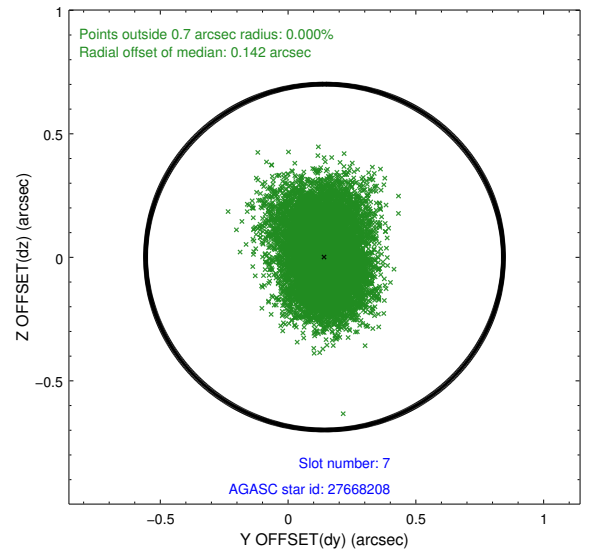
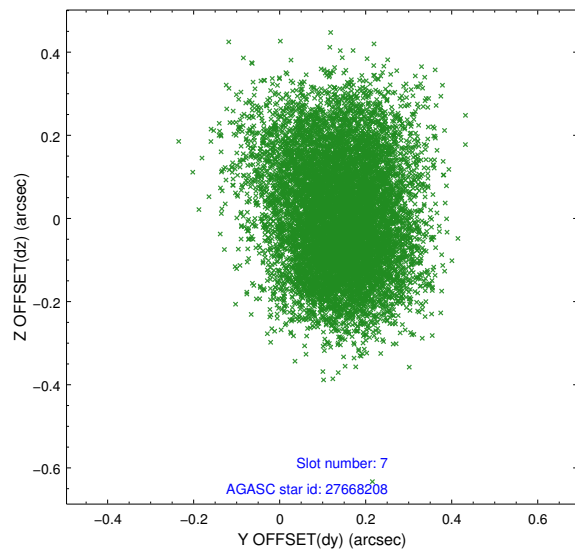
2.4.4 Slot 6



Time (s)

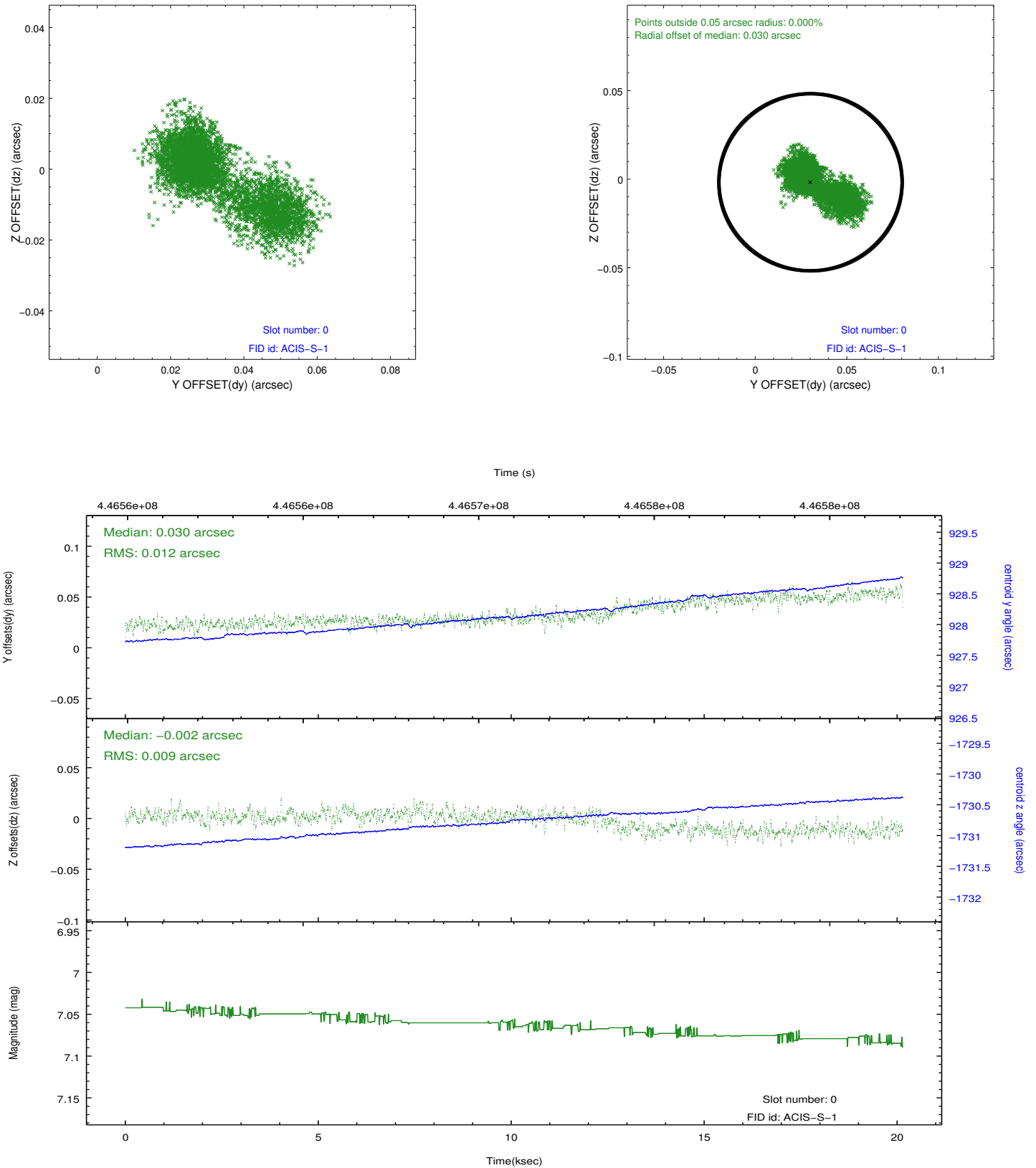


2.4.5 Slot 7

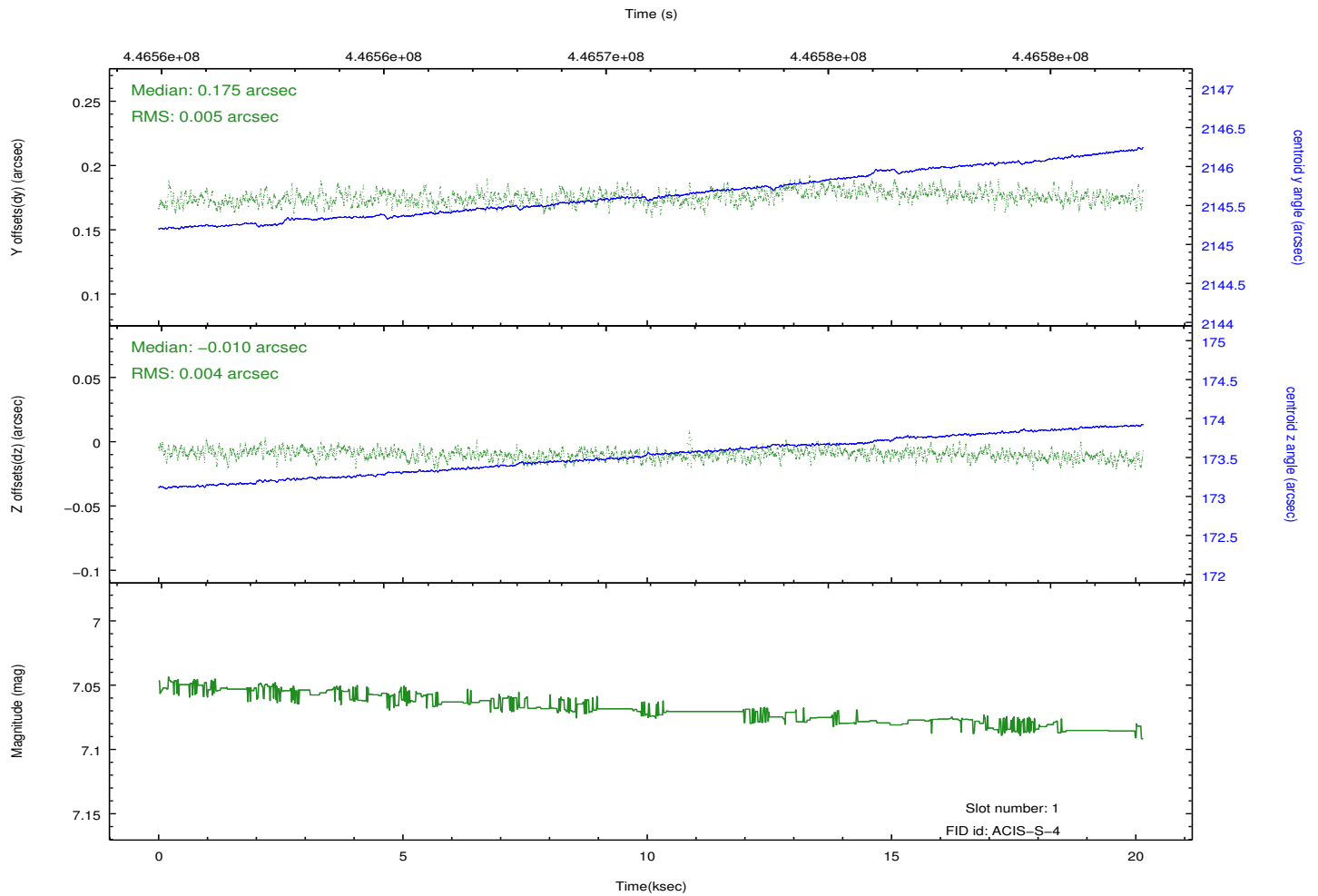
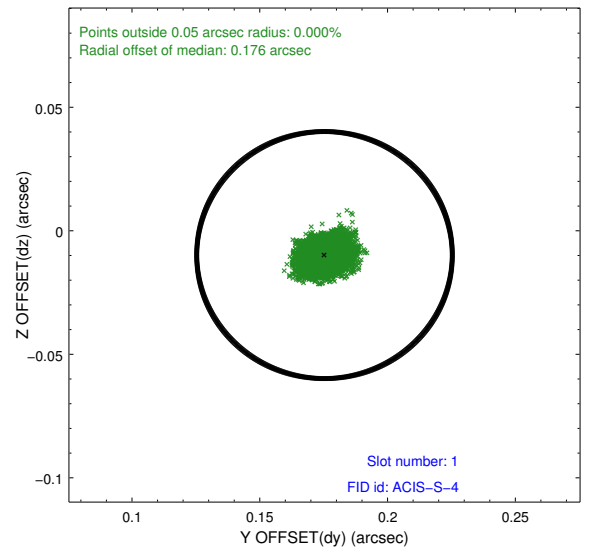
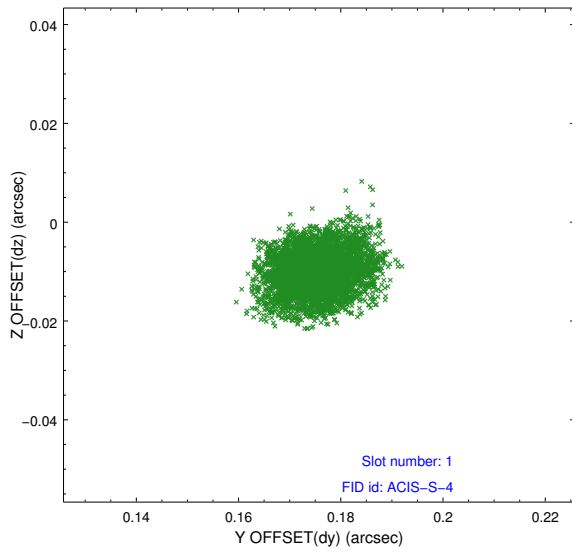


2.5 FID Slots

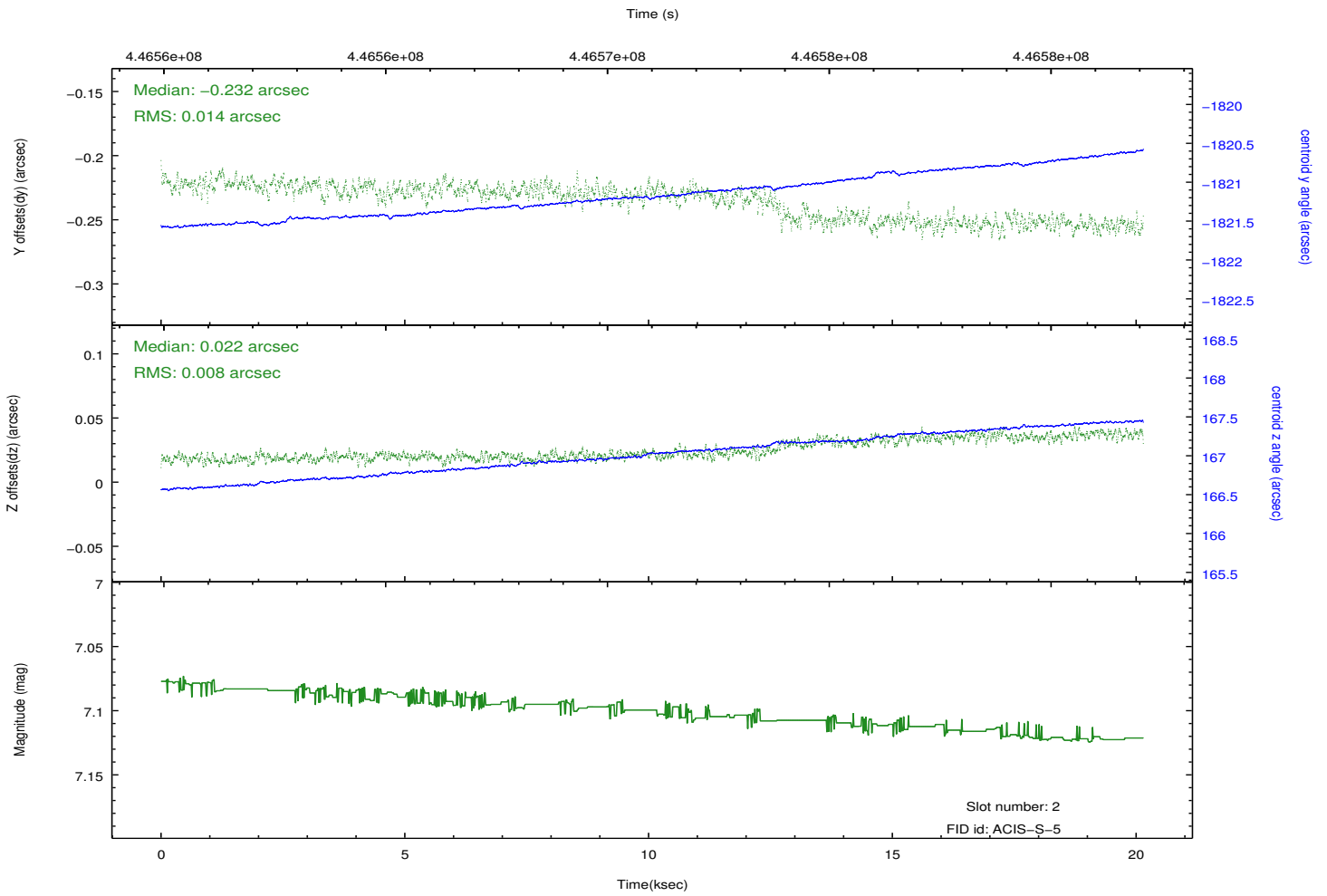
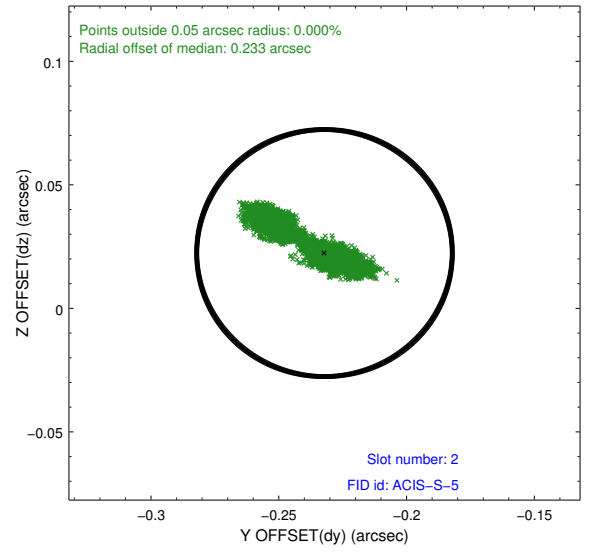
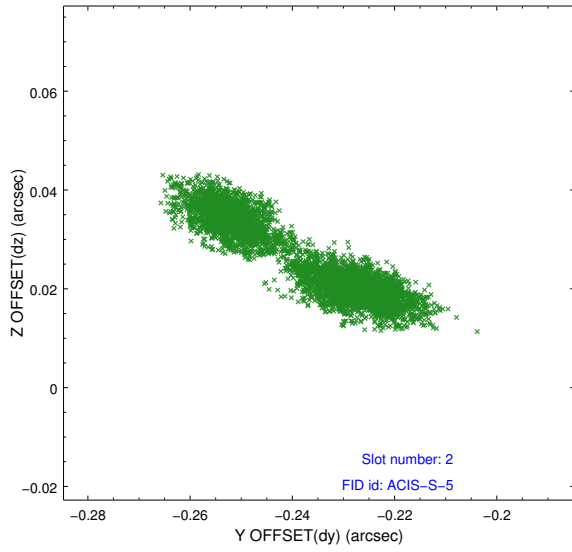
2.5.1 Slot 0



2.5.2 Slot 1



2.5.3 Slot 2



A Summary

A.1 Status

V&V Scientist	Jen Lauer
V&V Date (YYYY-MM-DD)	2012.02.27
V&V Edition	1
V&V Disposition and Status	OK
V&V Charge Time	20.063200154305

A.2 Comments

Joint Proposal: HST