

V&V Reference Report

L2 ASCDS Version : 8.4.3

Observation 14240 - L2 Version 4
Chandra X-Ray Center

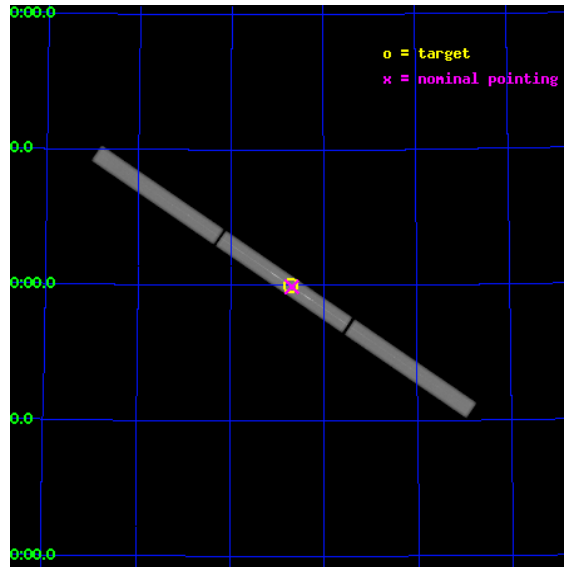
L2 Processing Date : Aug 10 2012

Contents

1	Front	2
2	OBI	3
2.1	OBI	3
2.1.1	Images	3
2.1.2	Parameters	4
2.1.3	Events	4
2.2	Compared Parameters	5
2.3	Aspect	6
2.4	Star Slots	9
2.4.1	Slot 3	9
2.4.2	Slot 4	10
2.4.3	Slot 5	11
2.4.4	Slot 6	12
2.4.5	Slot 7	13
2.5	FID Slots	14
2.5.1	Slot 0	14
2.5.2	Slot 1	15
2.5.3	Slot 2	16
3	Gratings	17
3.1	LETG Arm	17
A	Summary	19
A.1	Status	19
A.2	Comments	19

1 Front

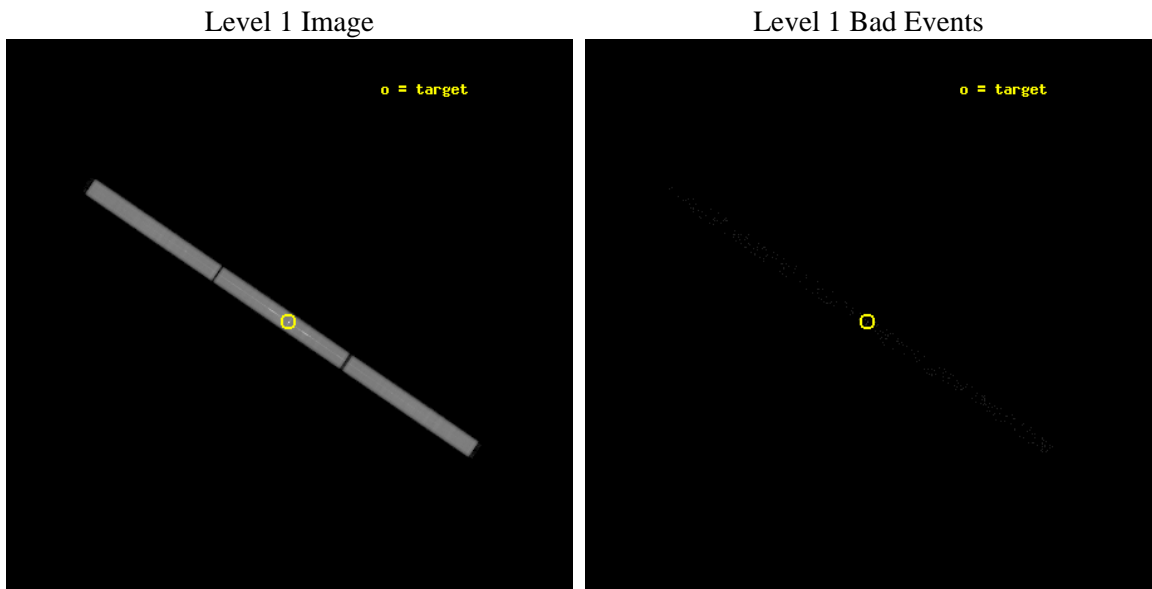
seq_num	291013	Sequence number
obs_id	14240	Observation id
title	AO-13 Calibration Observations of Capella	Proposal title
observer	Dr. CXC Calibration	Principal investigator
object	Capella	Source name
ra_targ	79.17625	Observer's specified target RA [deg]
dec_targ	45.997889	Observer's specified target Dec [deg]
ra_nom	79.170558172232	Nominal RA [deg]
dec_nom	45.995277169737	Nominal Dec [deg]
roll_nom	214.07482075657	Nominal Roll [deg]
revision	4	Processing version of data
ontime	30187.276594698	[s]
liveltime	29931.66164355	Overtime multiplied by DTCOR
l2events	2267248	Number of level 2 events



2 OBI

2.1 OBI

2.1.1 Images



2.1.2 Parameters

obi_num	0	Obi number	sched_exp_time	30000.000000	[s] Scheduled observation exposure time
ascdsver	8.4.5	Processing system revision	ontime	30187.276594698	[s]
caldbver	4.5.1.1	 	l1events	2874305	Number of level 1 events
date	2012-08-10T03:55:32	Date and time of file creation			
revision	4	Processing version of data			

2.1.3 Events

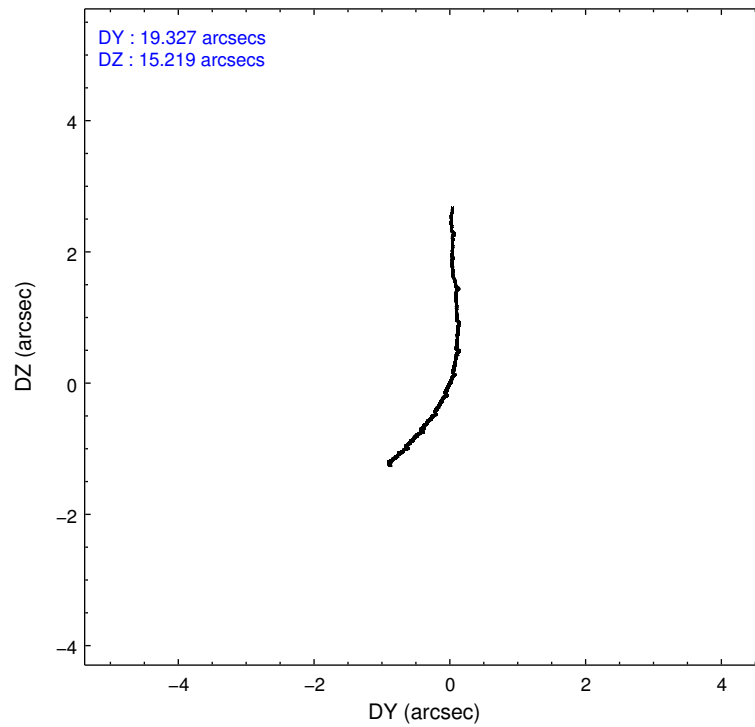
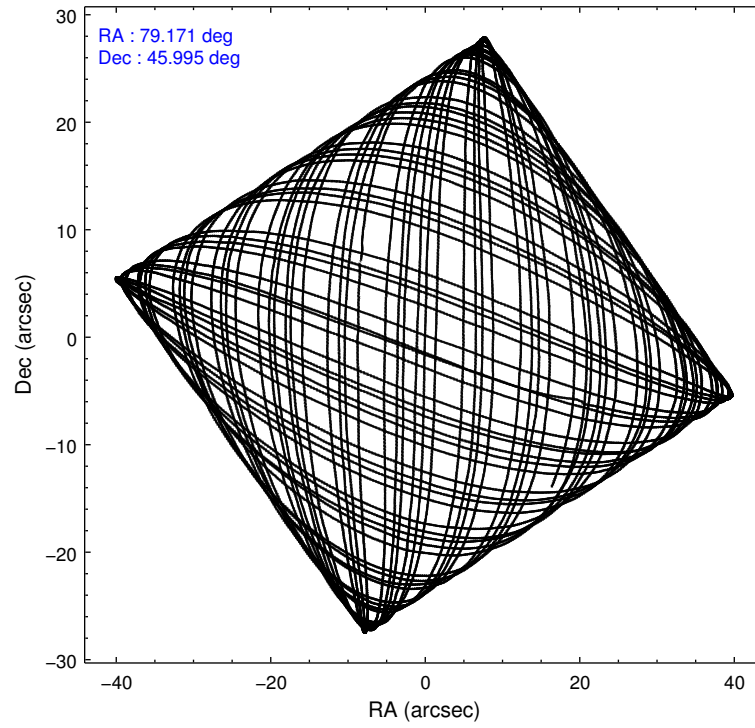
Level 1 Events

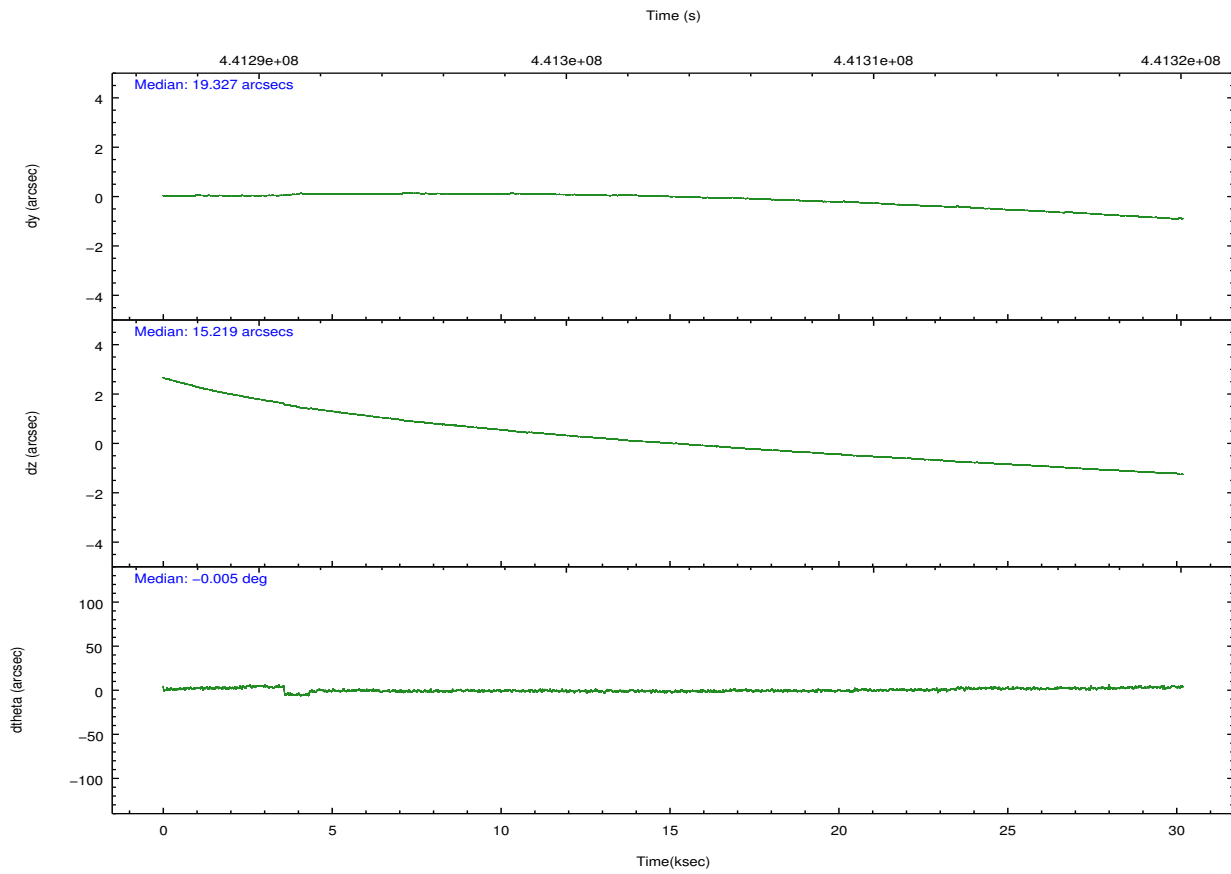
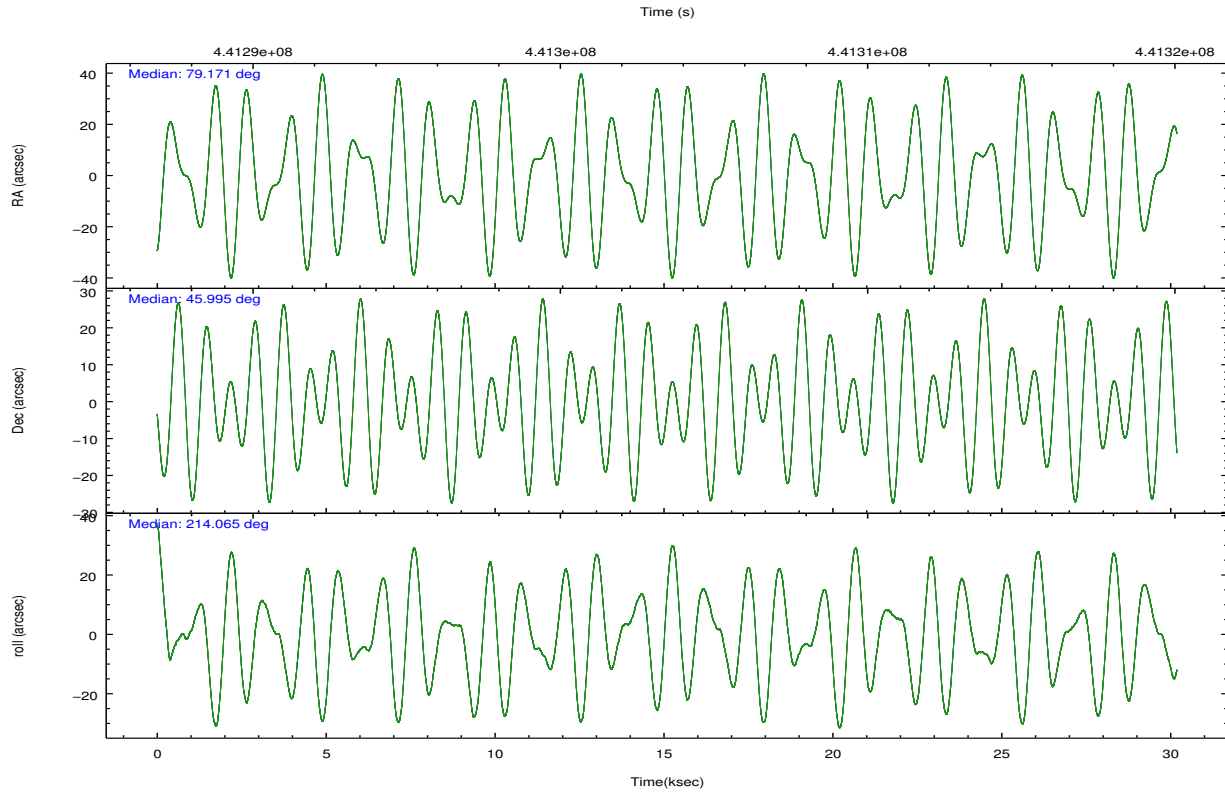
	segment 1	segment 2	segment 3
level 1 events	910040	1042291	921974
rejected events	5856	6485	6125
rejected %	0%	0%	0%

2.2 Compared Parameters

Parameter	Planned	Actual	Parameter	Planned	Actual
Instrument	HRC	HRC	Obspar format version number	7	7
Detector	HRC-S	HRC-S	Obspar file type	PREDICTED	ACTUAL
Grating	LETG	LETG	Obspar update status	NONE	UPDATED
Data mode	OBSERVING	OBSERVING			
Observation mode	POINTING	POINTING			
[deg] Pointing RA	79.186710	79.17055817223162			
[deg] Pointing Dec	46.021694	45.99527716973738			
[deg] Pointing Roll	213.995867	214.074820756573			
[mm] SIM focus pos	-1.429586	-1.428180813131781			
[mm] SIM defocus	0.1037507710433287	0.1051558262725154			
[mm] SIM translation stage pos	250.455976	250.466033080201			
[mm] SIM translation stage offset	0	-0.01005468664627074			
[s] Observation start time (MET)	441288567.184000	441287932.37071			
Observation start date	2011-12-26T12:08:21	2011-12-26T11:58:52			
[s] Observation end time (MET)	441318567.184000	441319430.62238			
Observation end date	2011-12-26T20:28:21	2011-12-26T20:43:50			

2.3 Aspect



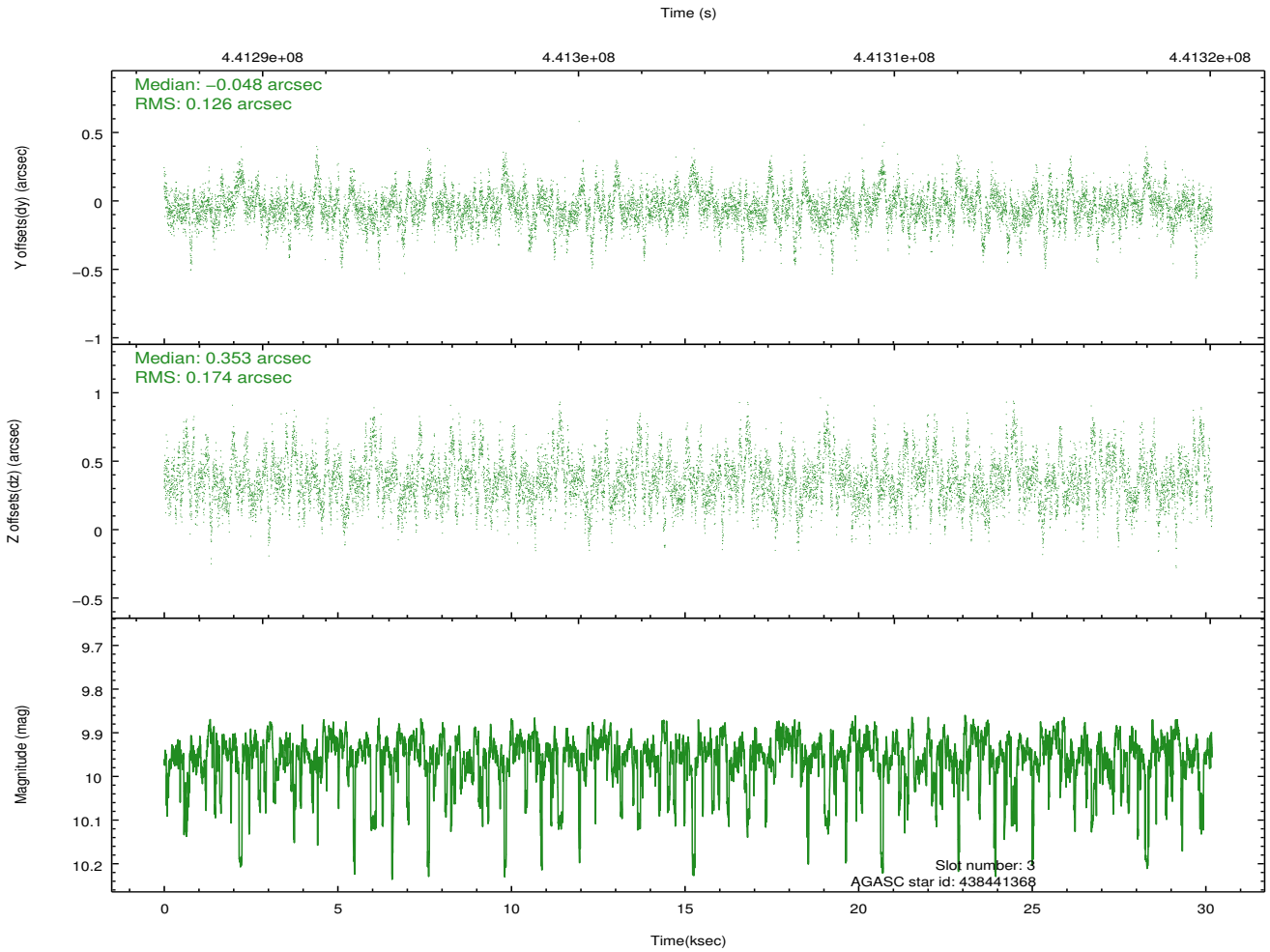
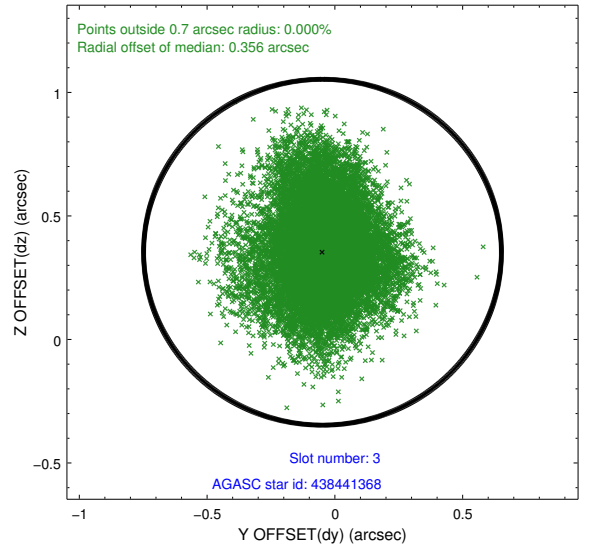
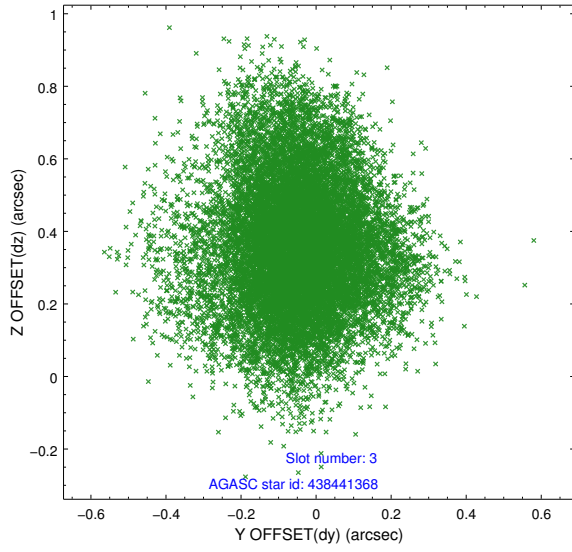


Slot Statistics

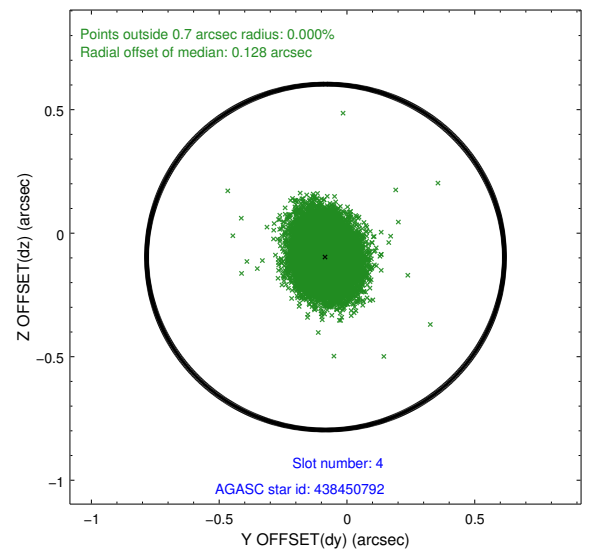
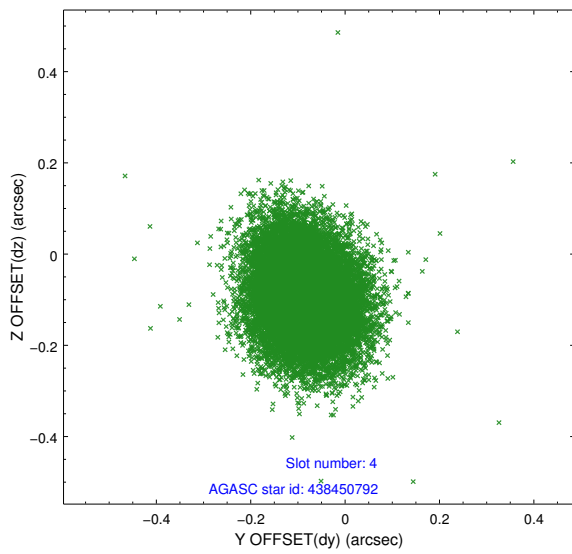
slot	status	id	mag	n_pts	med_dy	med_dz	dr1	dr2	ra	dec	mean_y	mean_z
0	FID	HRC-S-1	7.06	7362	-0.037	-0.164	0.006	0.011	0.000000	0.000000	-1173.79	-464.31
1	FID	HRC-S-2	7.03	7363	0.162	-0.138	0.032	0.054	0.000000	0.000000	1225.93	-456.94
2	FID	HRC-S-4	7.00	7360	0.278	-0.002	0.029	0.050	0.000000	0.000000	1224.93	567.92
3	GUIDE	438441368	9.95	14573	-0.048	0.353	0.228	0.381	78.646413	46.420494	307.23	-1943.16
4	GUIDE	438450792	8.81	14705	-0.084	-0.097	0.106	0.172	78.654240	46.382628	368.74	-1818.69
5	GUIDE	440150048	7.19	14727	0.026	-0.074	0.102	0.163	79.112838	46.416060	-641.07	-1279.73
6	GUIDE	440163960	8.87	14718	-0.050	-0.139	0.110	0.181	79.298370	45.827072	159.47	737.33
7	GUIDE	440164960	8.31	14721	0.148	-0.045	0.093	0.153	79.132526	46.140947	-126.96	-430.71

2.4 Star Slots

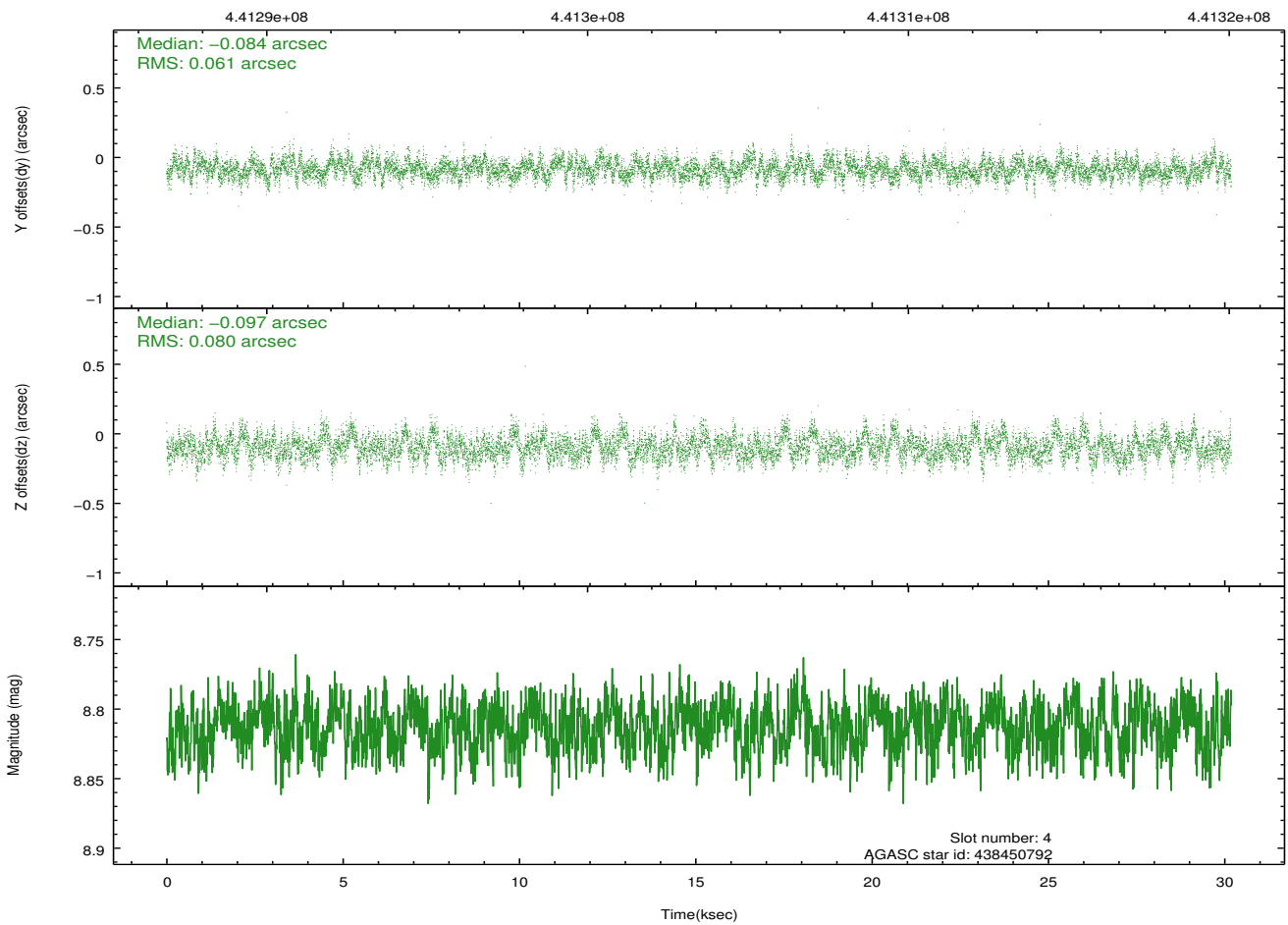
2.4.1 Slot 3



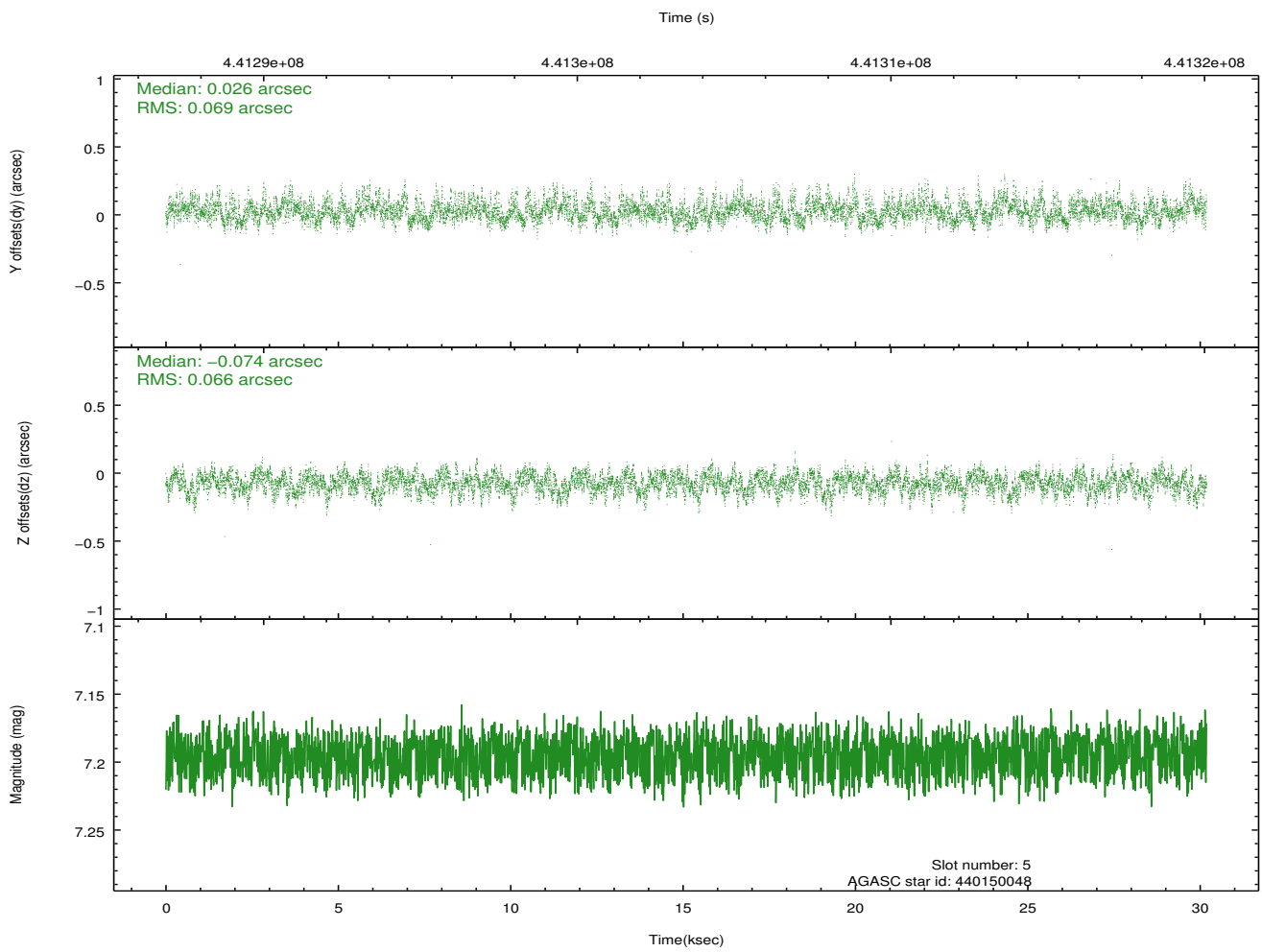
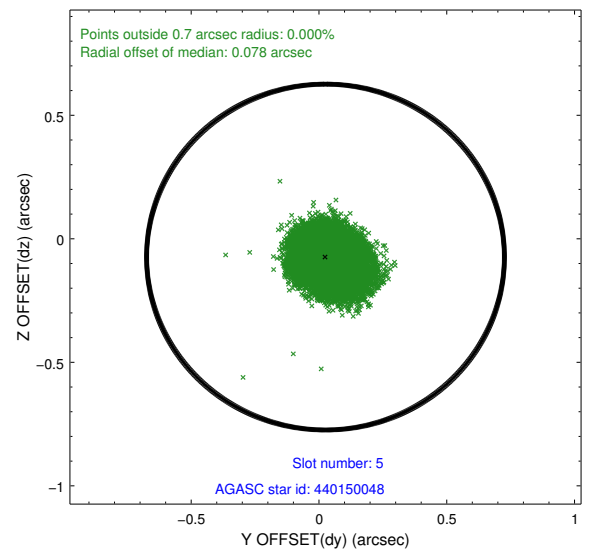
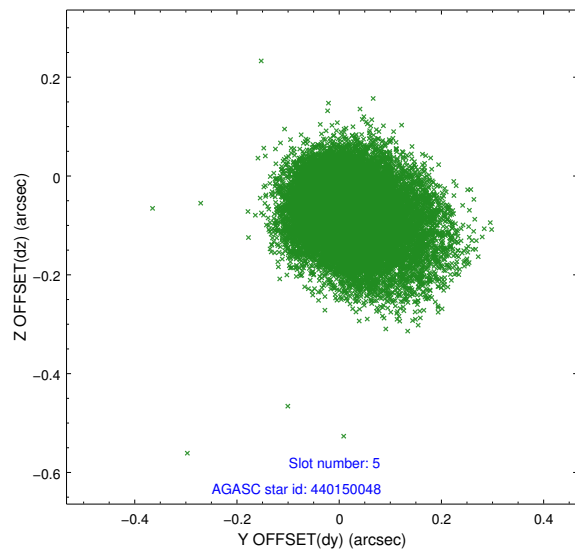
2.4.2 Slot 4



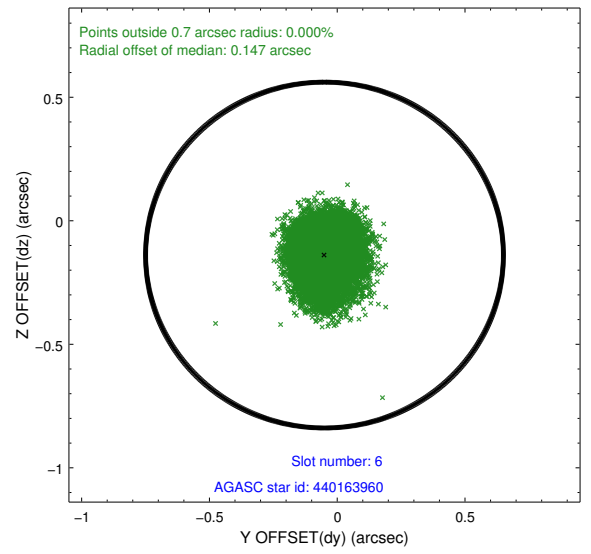
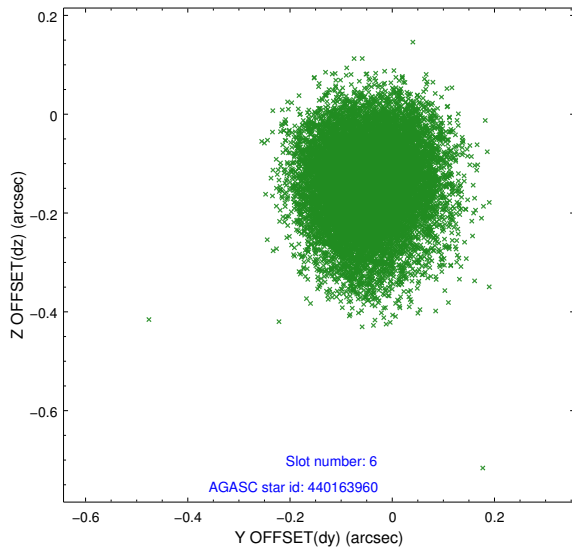
Time (s)



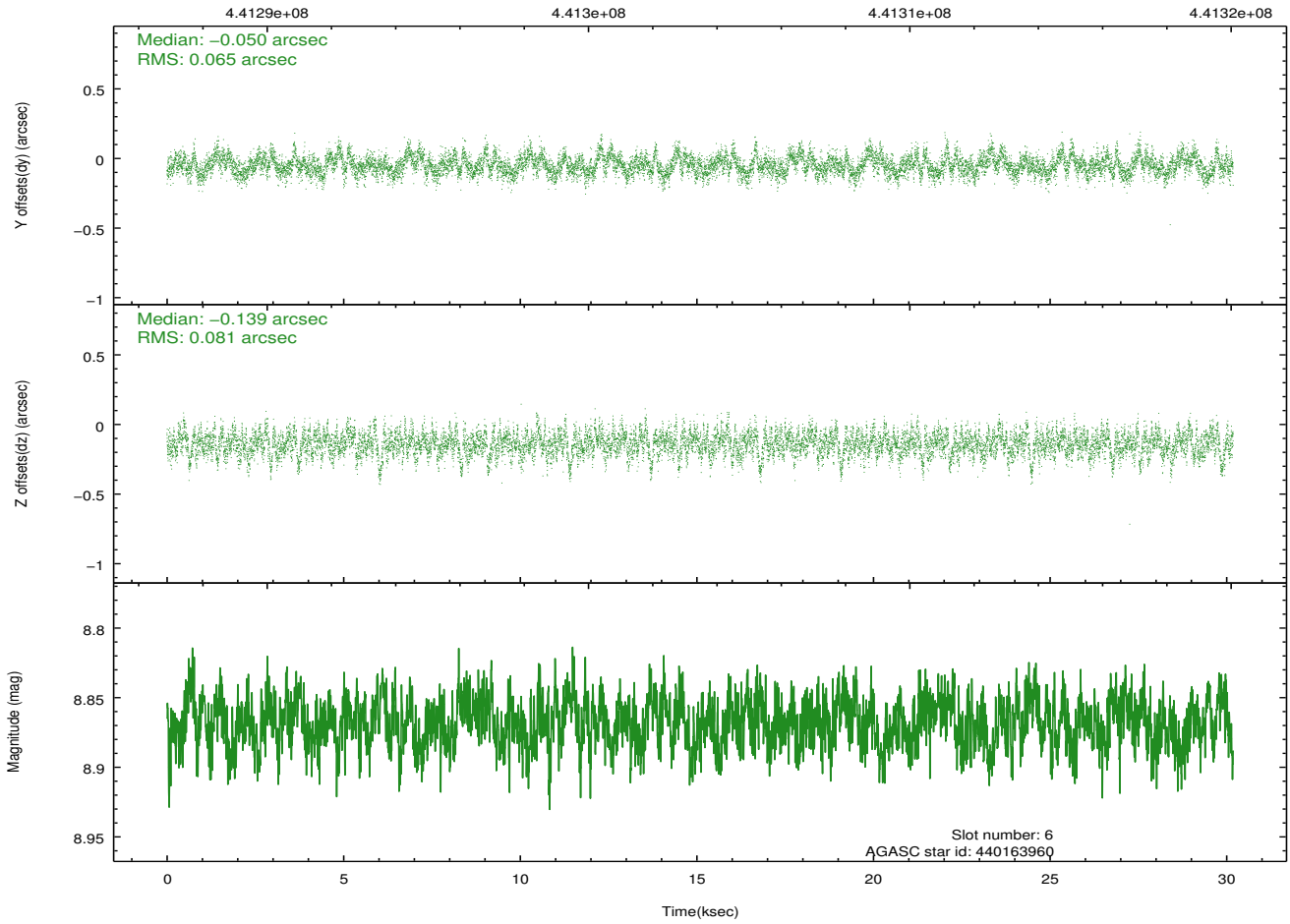
2.4.3 Slot 5



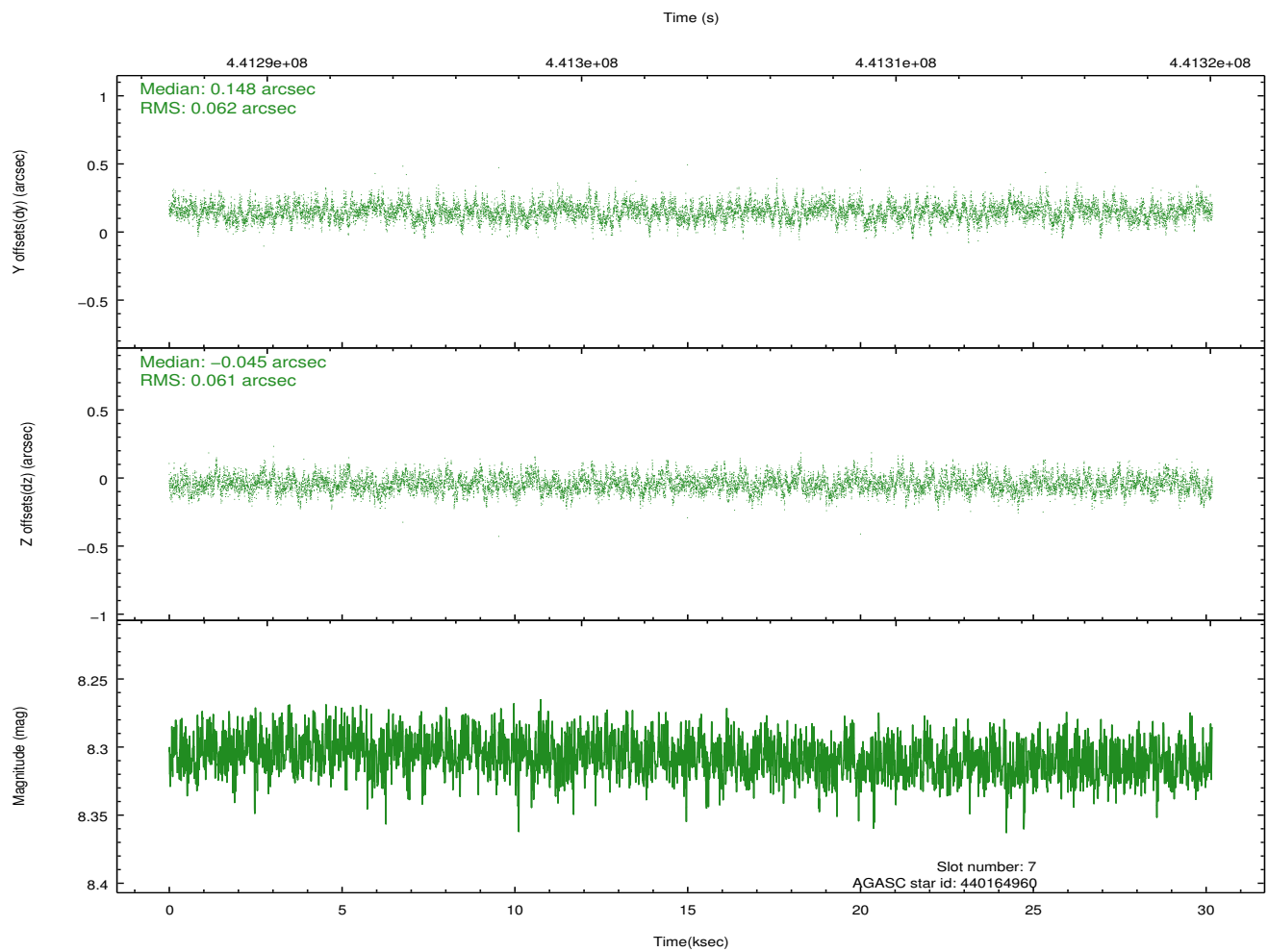
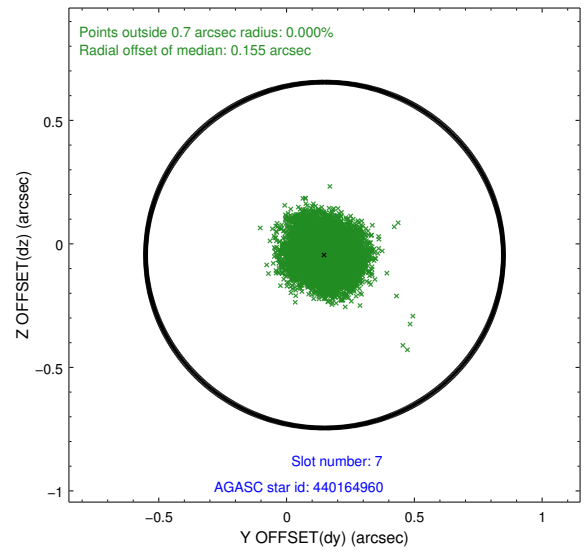
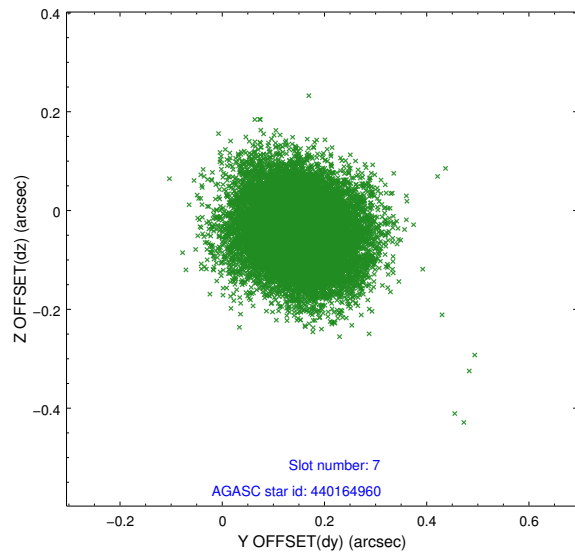
2.4.4 Slot 6



Time (s)

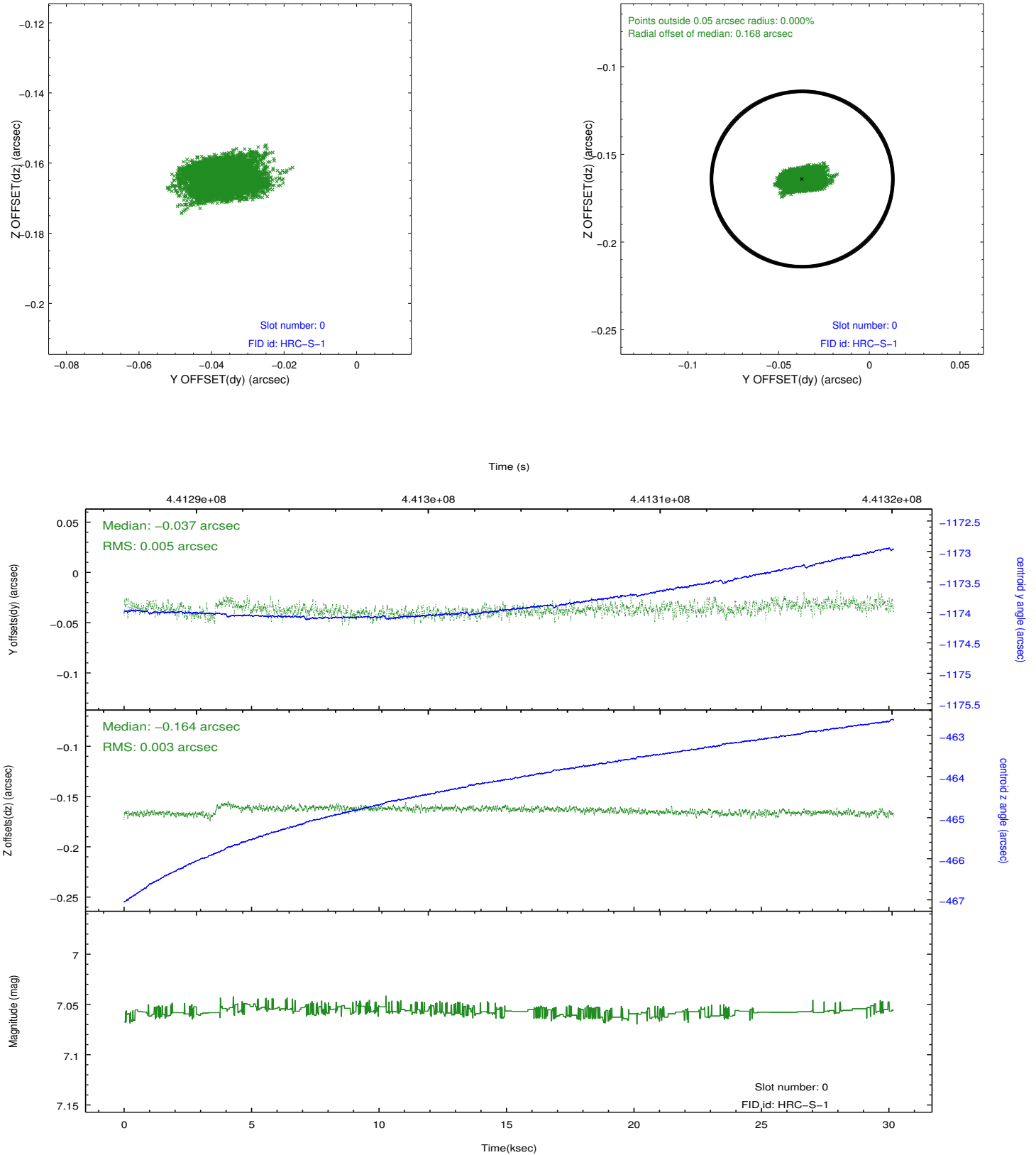


2.4.5 Slot 7

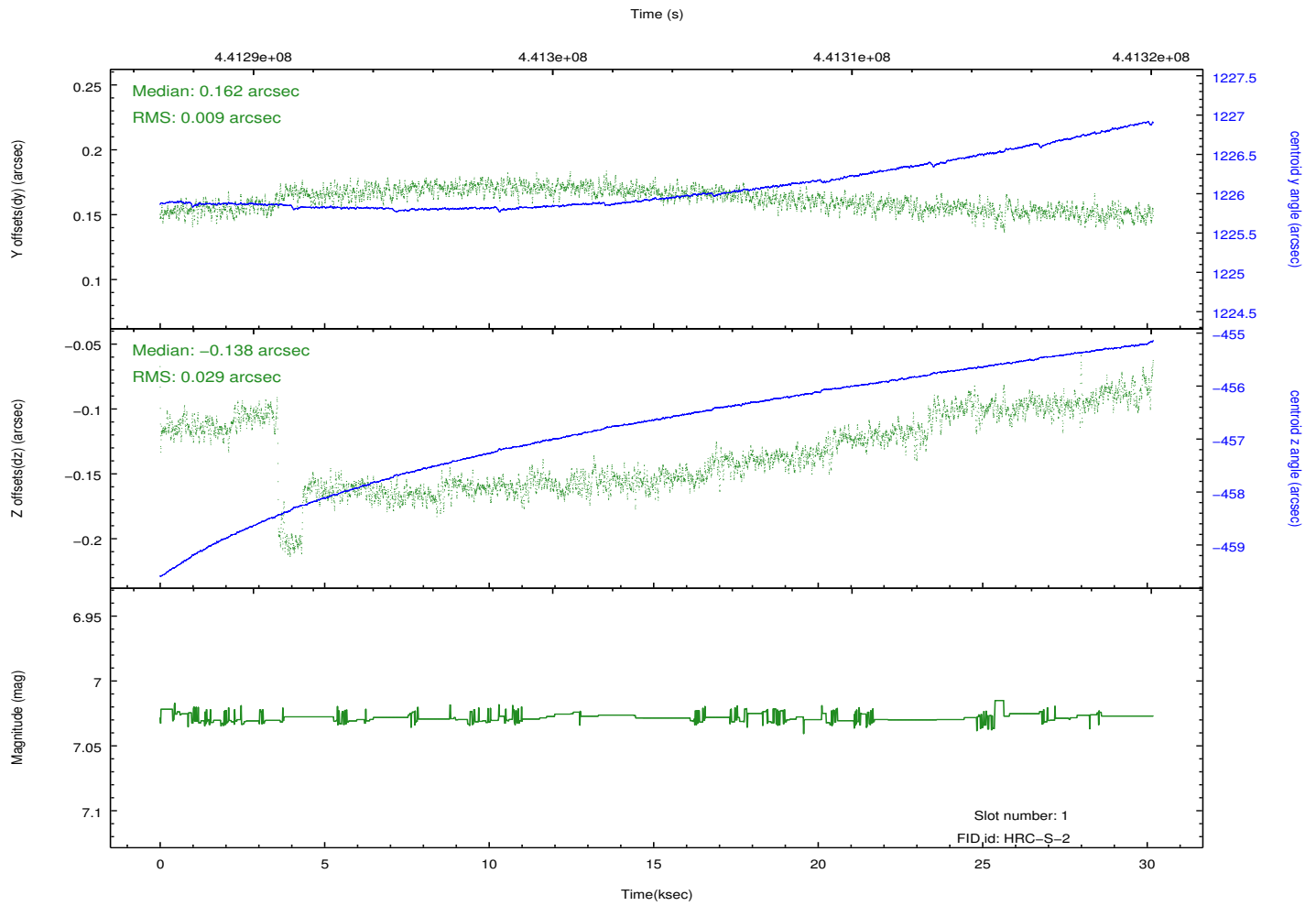
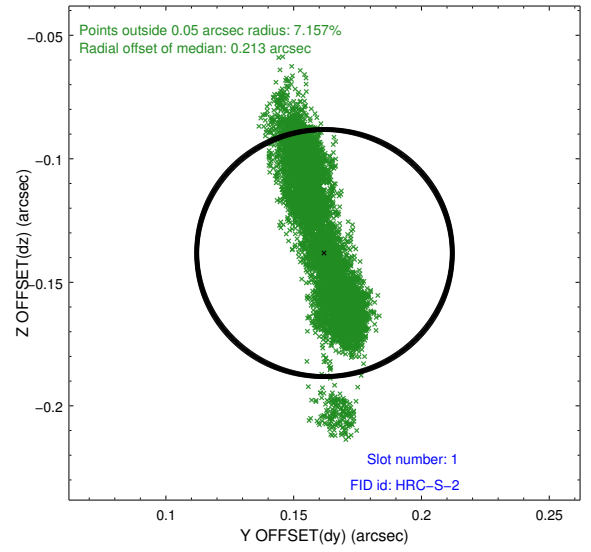
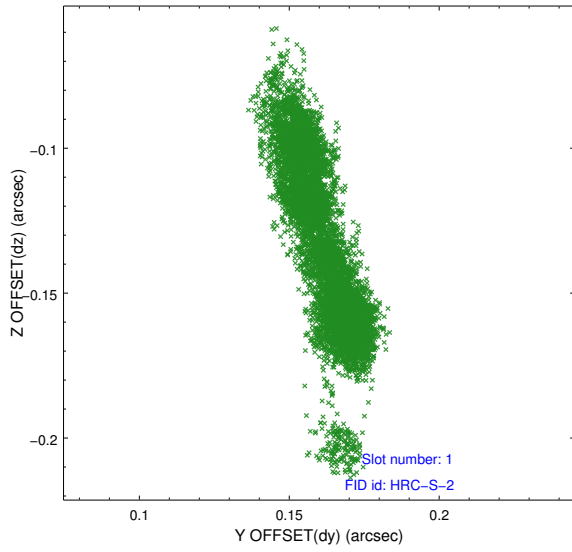


2.5 FID Slots

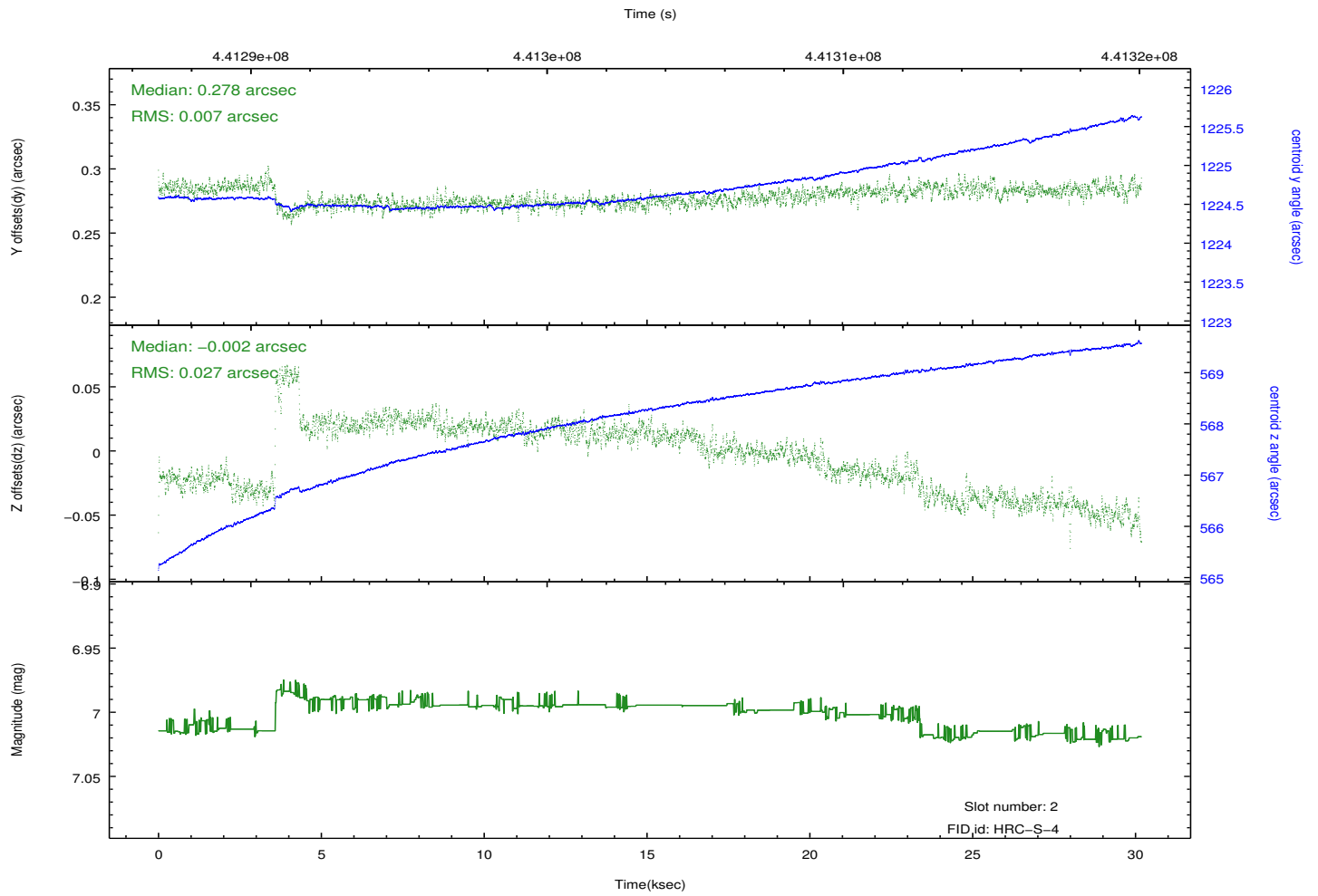
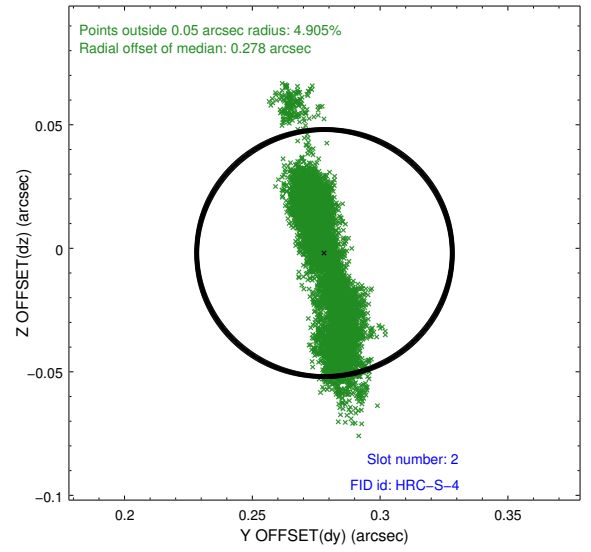
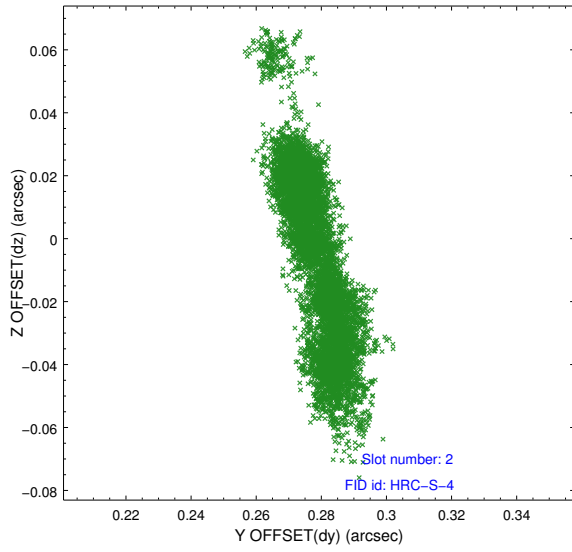
2.5.1 Slot 0



2.5.2 Slot 1

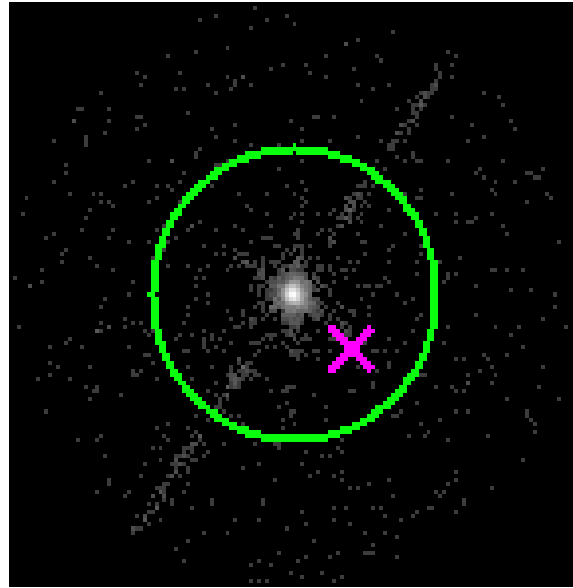


2.5.3 Slot 2

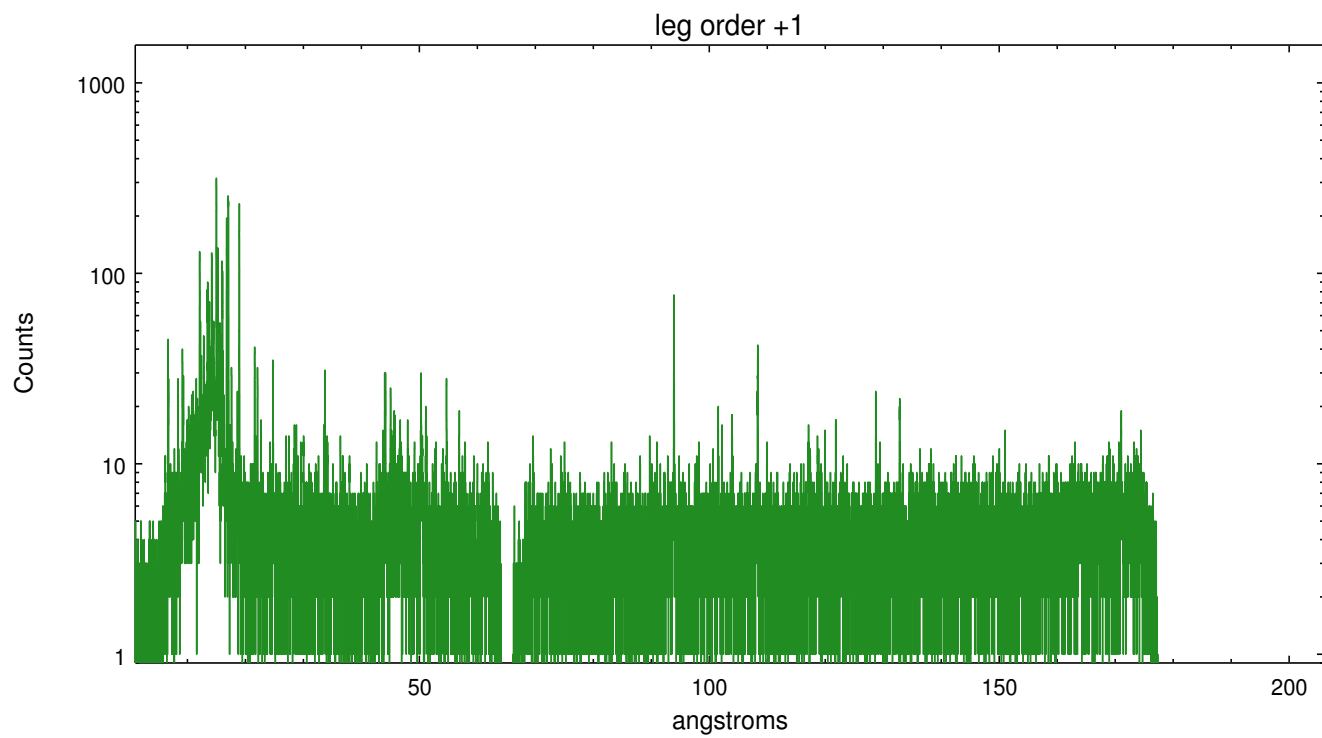
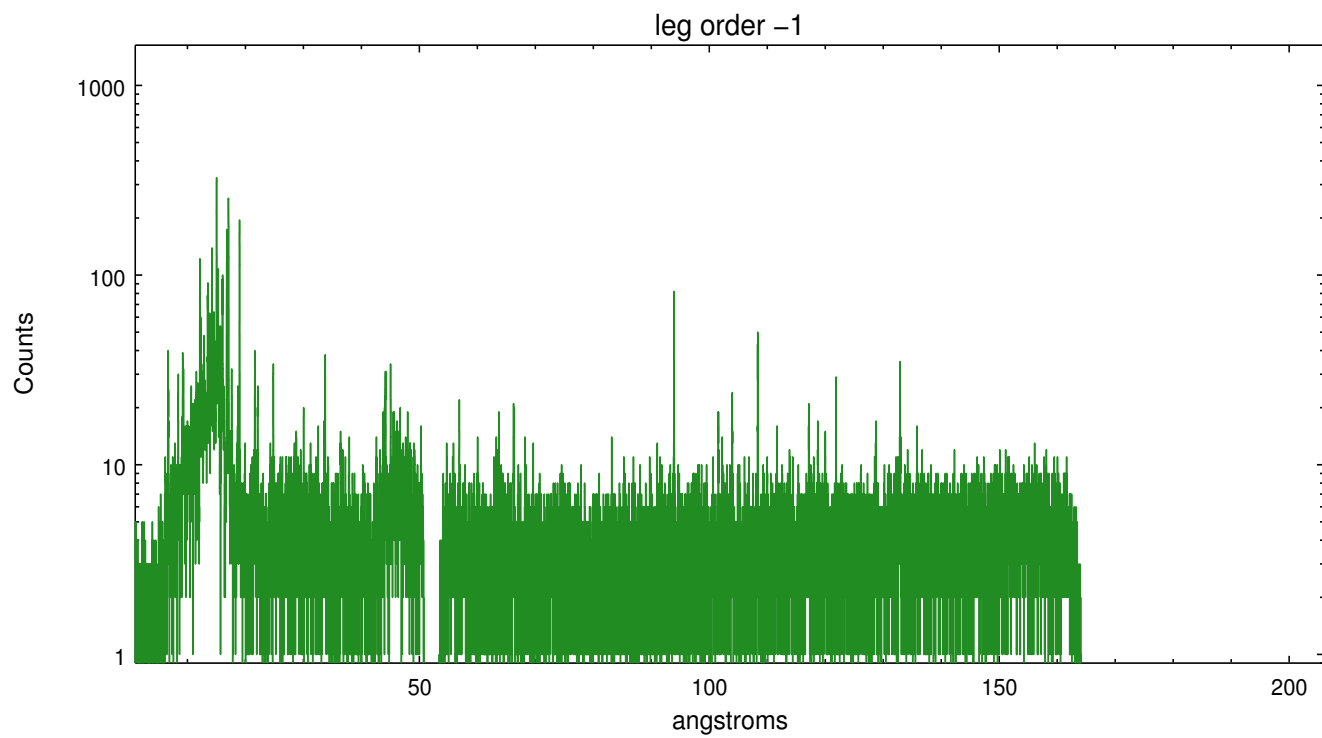


3 Gratings

3.1 LETG Arm



LETG Zero Order



A Summary

A.1 Status

V&V Scientist	Joy Nichols
V&V Date (YYYY-MM-DD)	2012.08.10
V&V Edition	1
V&V Disposition and Status	OK
V&V Charge Time	30.187532845736

A.2 Comments