

V&V Reference Report

L2 ASCDS Version : 8.4.3

Observation 14420 - L2 Version 1
Chandra X-Ray Center

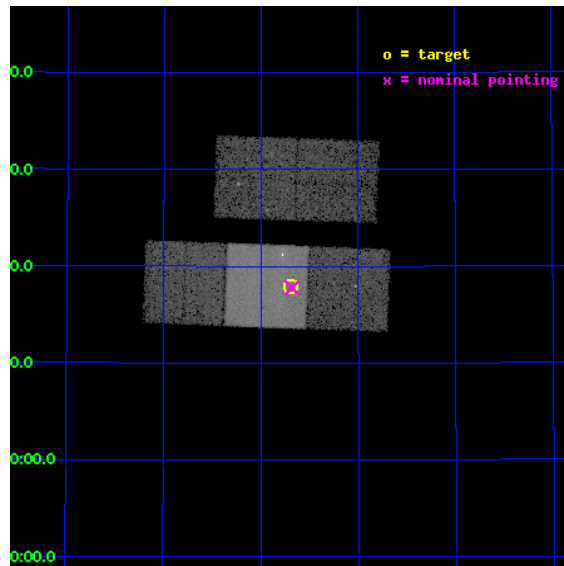
L2 Processing Date : Apr 12 2012

Contents

1	Front	2
2	OBI	3
2.1	OBI	3
2.1.1	Images	3
2.1.2	Bias	3
2.1.3	Parameters	4
2.1.4	Events	4
2.2	Compared Parameters	5
2.3	Aspect	6
2.4	Star Slots	9
2.4.1	Slot 3	9
2.4.2	Slot 4	10
2.4.3	Slot 5	11
2.4.4	Slot 6	12
2.4.5	Slot 7	13
2.5	FID Slots	14
2.5.1	Slot 0	14
2.5.2	Slot 1	15
2.5.3	Slot 2	16
A	Summary	17
A.1	Status	17
A.2	Comments	17

1 Front

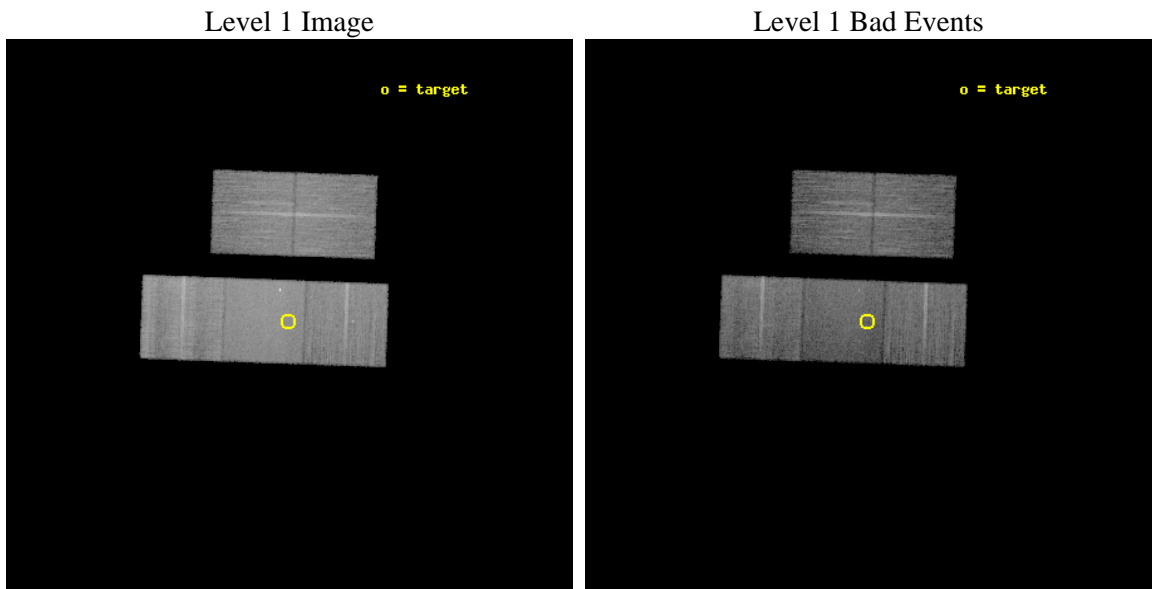
seq_num	501797	Sequence number
obs_id	14420	Observation id
title	Supernova PTF 11qcj: first discovery of a radio luminous Ibn supernova	Proposal title
observer	Dr Alessandra Corsi	Principal investigator
object	PTF11qcj	Source name
dtcycle	0	
cycle	P	events from which exps? Prim/Second/Both
ra_targ	198.422917	Observer's specified target RA [deg]
dec_targ	47.299167	Observer's specified target Dec [deg]
ra_nom	198.42070193906	Nominal RA [deg]
dec_nom	47.296551958402	Nominal Dec [deg]
roll_nom	182.06264193304	Nominal Roll [deg]
revision	1	Processing version of data
ontime	20398.000156879	Sum of GTIs [s]
livetime	20131.485268041	Livetime [s]
ontime2	20398.000156879	Sum of GTIs [s]
ontime3	20398.000156879	Sum of GTIs [s]
ontime6	20398.000156879	Sum of GTIs [s]
ontime7	20398.000156879	Sum of GTIs [s]
ontime8	20398.000156879	Sum of GTIs [s]
l2events	119439	Number of level 2 events



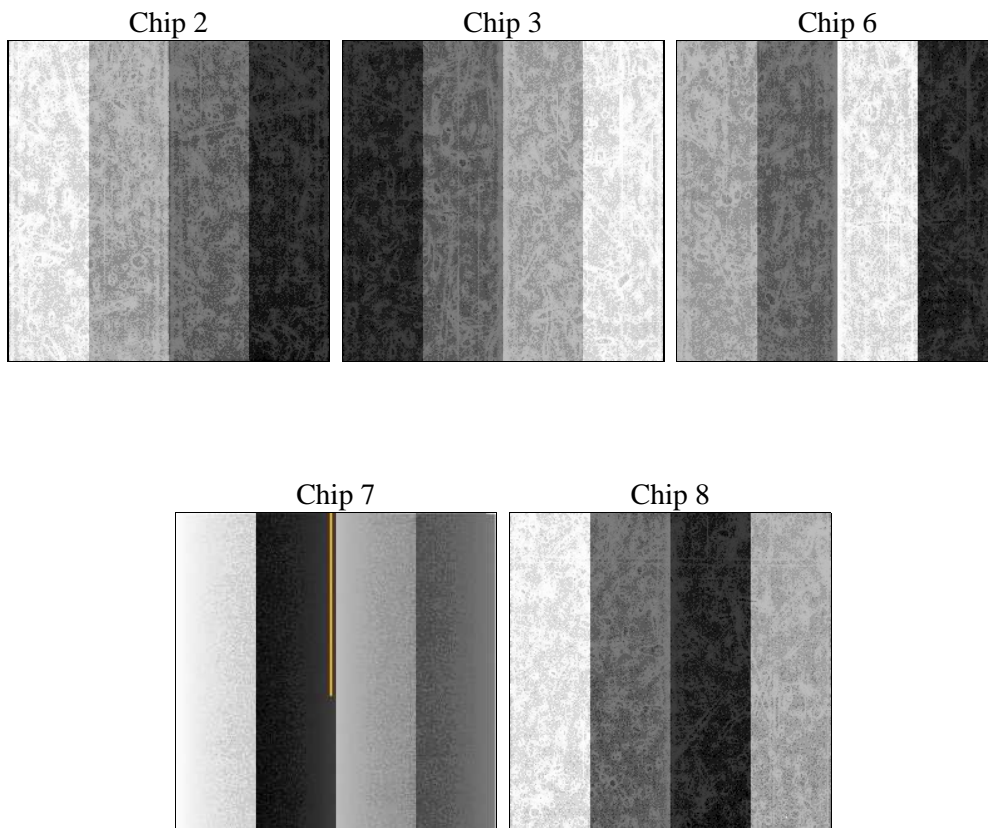
2 OBI

2.1 OBI

2.1.1 Images



2.1.2 Bias



2.1.3 Parameters

obi_num	0	Obi number	sched_exp_time	20334.707000	[s] Scheduled observation exposure time
ascdsver	8.4.3	Processing system revision	ontime	20398.000156879	Sum of GTIs [s]
caldbver	4.4.9	 	ontime2	20398.000156879	Sum of GTIs [s]
date	2012-04-12T04:16:11	Date and time of file creation	ontime3	20398.000156879	Sum of GTIs [s]
revision	1	Processing version of data	ontime6	20398.000156879	Sum of GTIs [s]
			ontime7	20398.000156879	Sum of GTIs [s]
			ontime8	20398.000156879	Sum of GTIs [s]
			l1events	666662	Number of level 1 events

2.1.4 Events

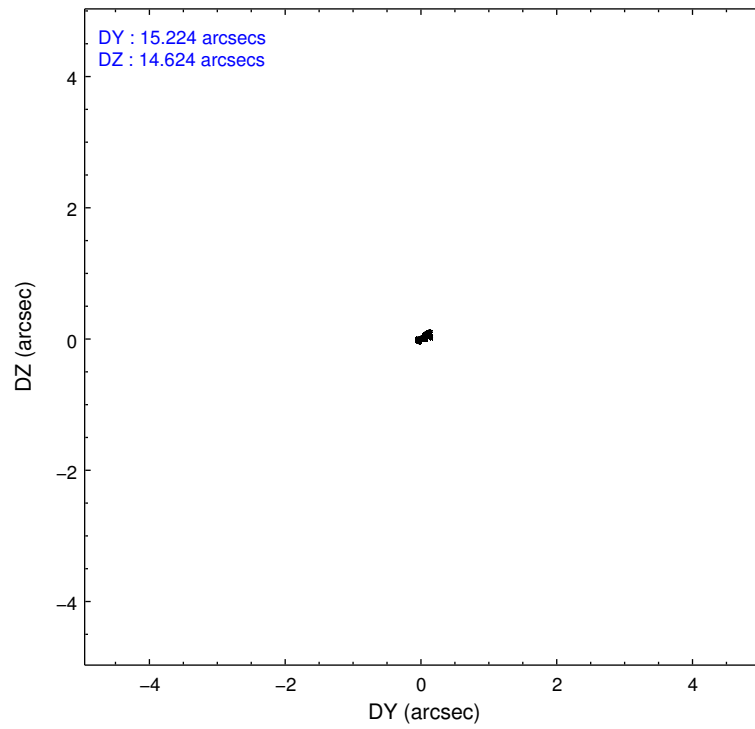
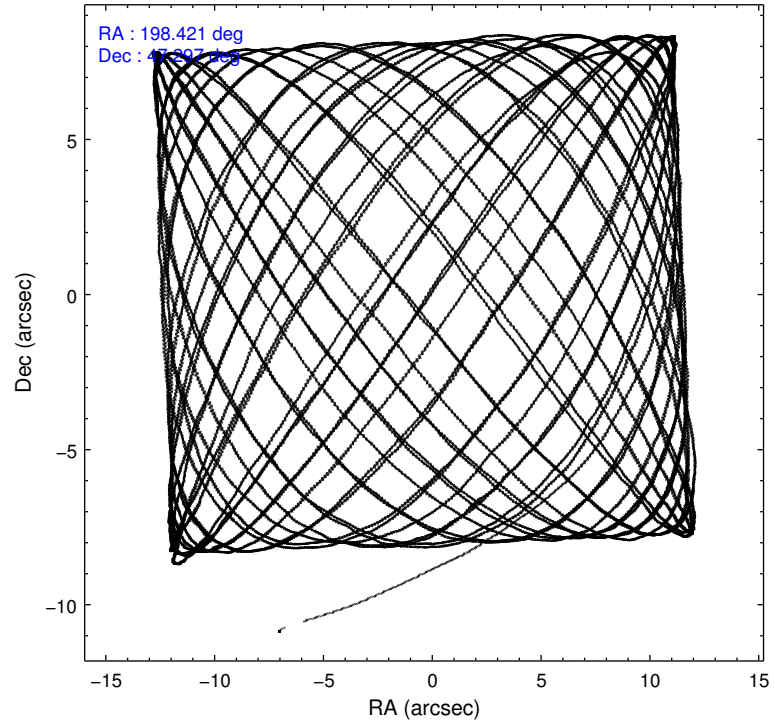
	ccd 2	ccd 3	ccd 6	ccd 7	ccd 8
level 1 events	113739	113295	121987	158825	158816
rejected events	100635	100446	107240	87077	114767
rejected %	88%	88%	87%	54%	72%

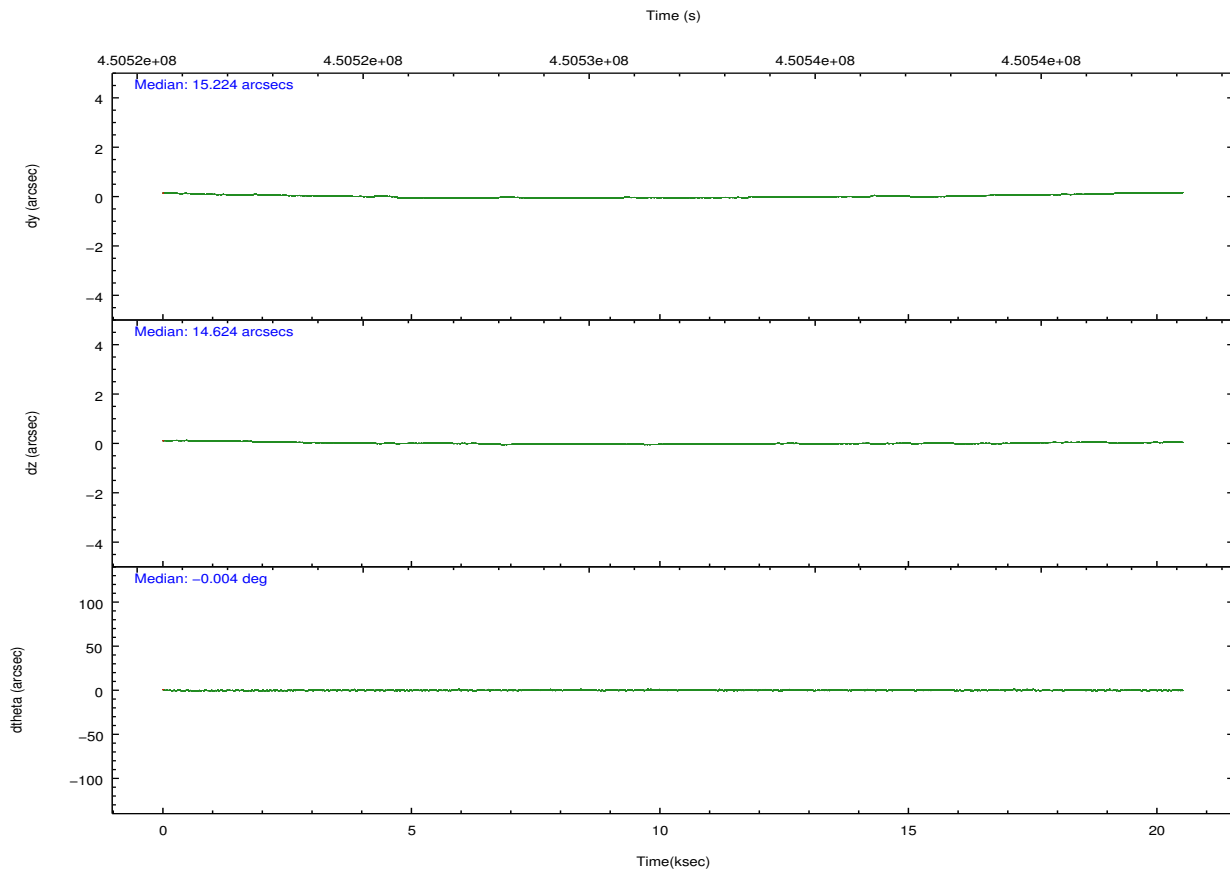
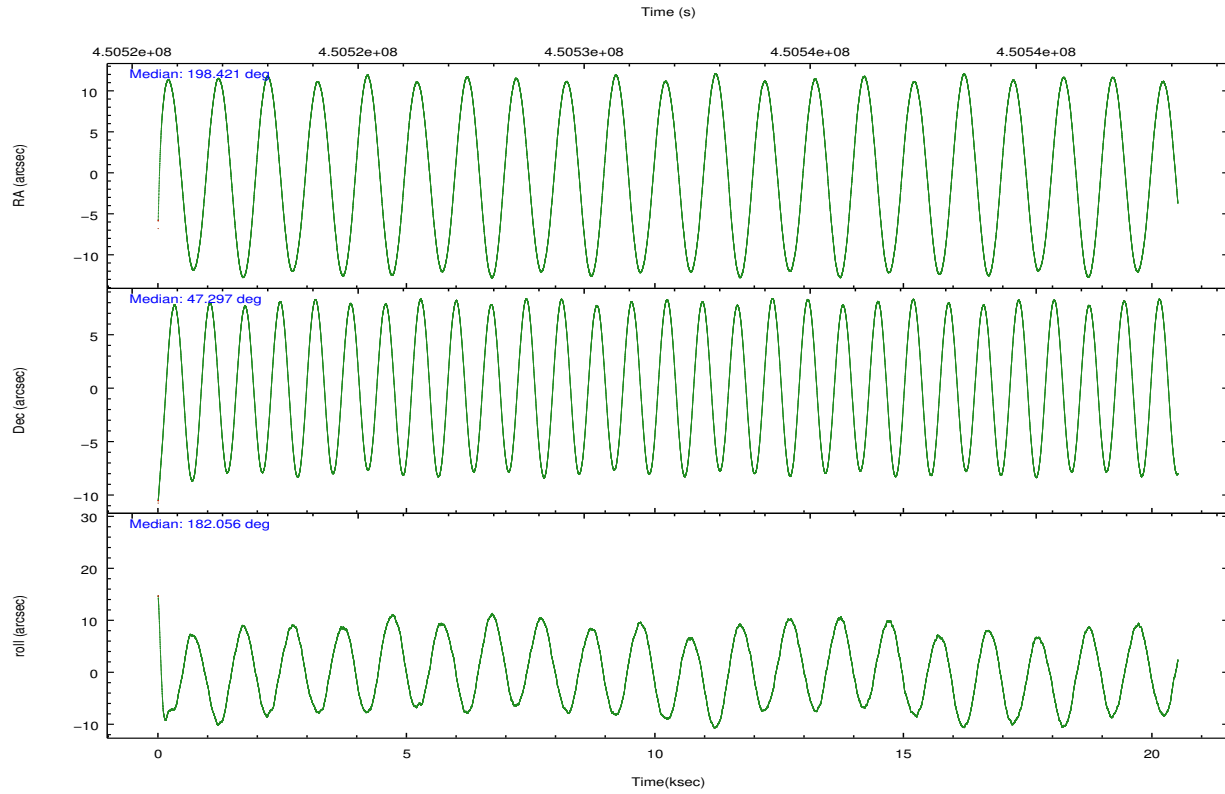
	ccd 2	ccd 3	ccd 6	ccd 7	ccd 8
grade 0 events	4753	4486	5280	7188	13695
	4%	3%	4%	4%	8%
grade 1 events	84	60	75	218	145
	0%	0%	0%	0%	0%
grade 2 events	3136	2867	3223	14933	9601
	2%	2%	2%	9%	6%
grade 3 events	1362	1469	1548	6256	5013
	1%	1%	1%	3%	3%
grade 4 events	1313	1391	1442	6360	4872
	1%	1%	1%	4%	3%
grade 5 events	5102	5856	5888	16526	8527
	4%	5%	4%	10%	5%
grade 6 events	2548	2641	3260	37028	10913
	2%	2%	2%	23%	6%
grade 7 events	95441	94525	101271	70316	106050
	83%	83%	83%	44%	66%

2.2 Compared Parameters

Parameter	Planned	Actual	Parameter	Planned	Actual
Instrument	ACIS	ACIS	Obspar format version number	7	7
Detector	ACIS-23678	ACIS-23678	Obspar file type	PREDICTED	ACTUAL
Grating	NONE	NONE	Obspar update status	NONE	UPDATED
Data mode	FAINT	FAINT	CCD I0 on	N	N
Observation mode	POINTING	POINTING	CCD I1 on	N	N
[deg] Pointing RA	198.454530	198.4207019390595	CCD I2 on	Y	Y
[deg] Pointing Dec	47.311380	47.29655195840184	CCD I3 on	Y	Y
[deg] Pointing Roll	181.881144	182.0626419330435	CCD S0 on	N	N
[mm] SIM focus pos	-0.684267	-0.6828225247311905	CCD S1 on	N	N
[mm] SIM defocus	0	0.001444936568705701	CCD S2 on	Y	Y
[mm] SIM translation stage pos	-190.132523	-190.1400660498719	CCD S3 on	Y	Y
[mm] SIM translation stage offset	0	0.00754346686406393	CCD S4 on	O1	Y
[s] Observation start time (MET)	450521789.184000	450520783.84701	CCD S5 on	N	N
Observation start date	2012-04-11T08:55:23	2012-04-11T08:39:43	Number of optional ACIS chips dropped	0	0
[s] Observation end time (MET)	450542124.184000	450542349.84816	On-chip summing requested	N	N
Observation end date	2012-04-11T14:34:18	2012-04-11T14:39:09	Subarray requested	NONE	NONE
Read mode	TIMED	TIMED	Alternating exposures requested	N	N
			[s] Primary exposure time	0.000000	3.1

2.3 Aspect



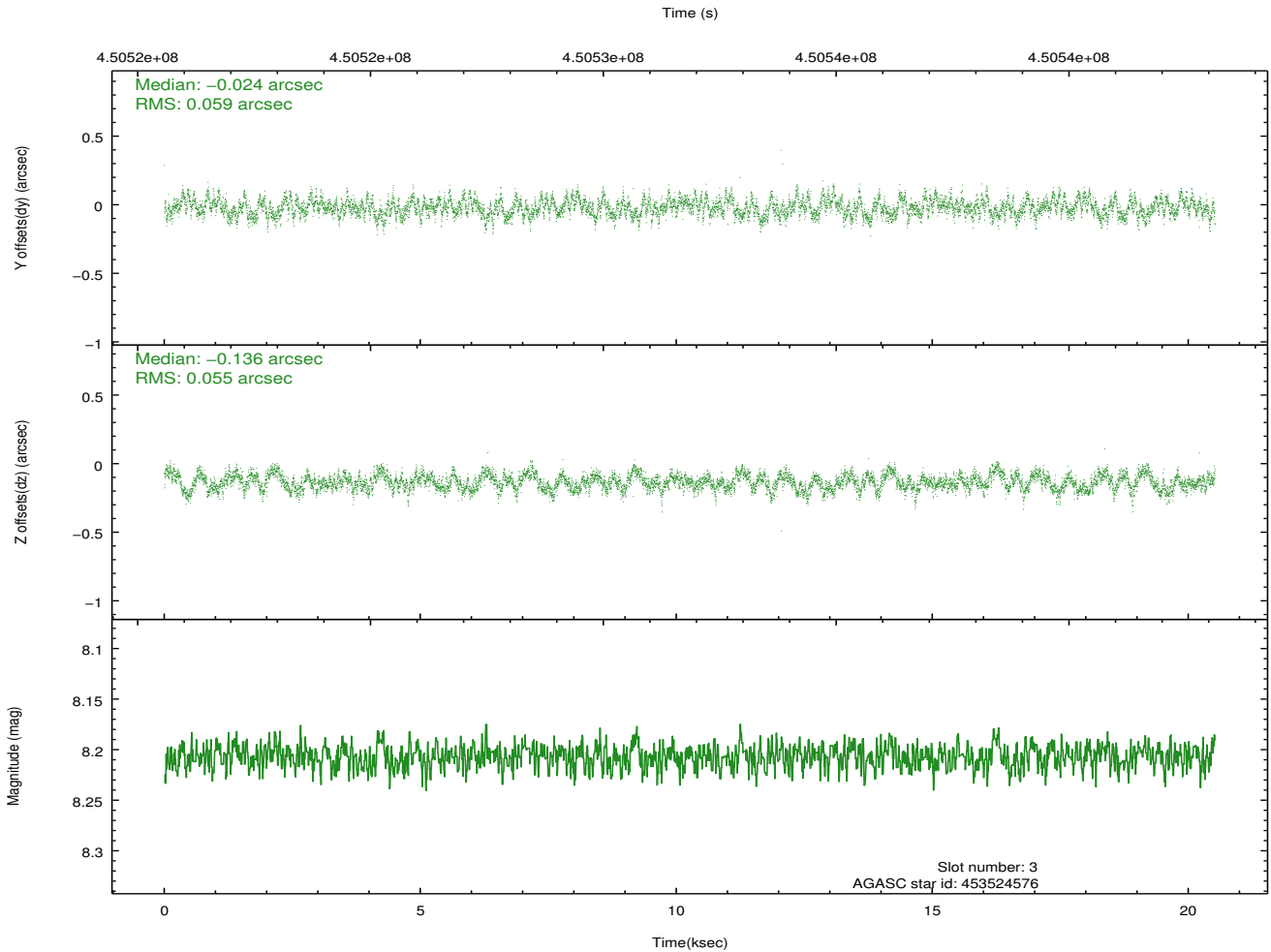
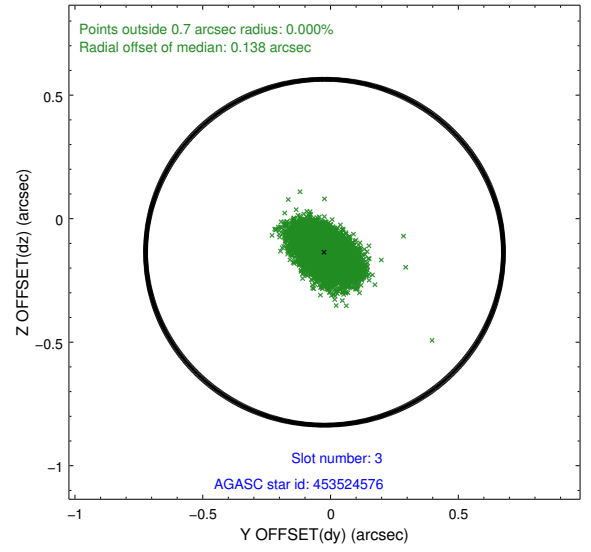
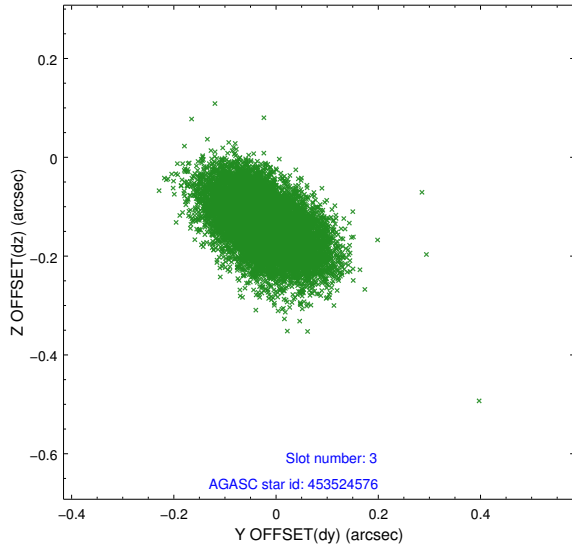


Slot Statistics

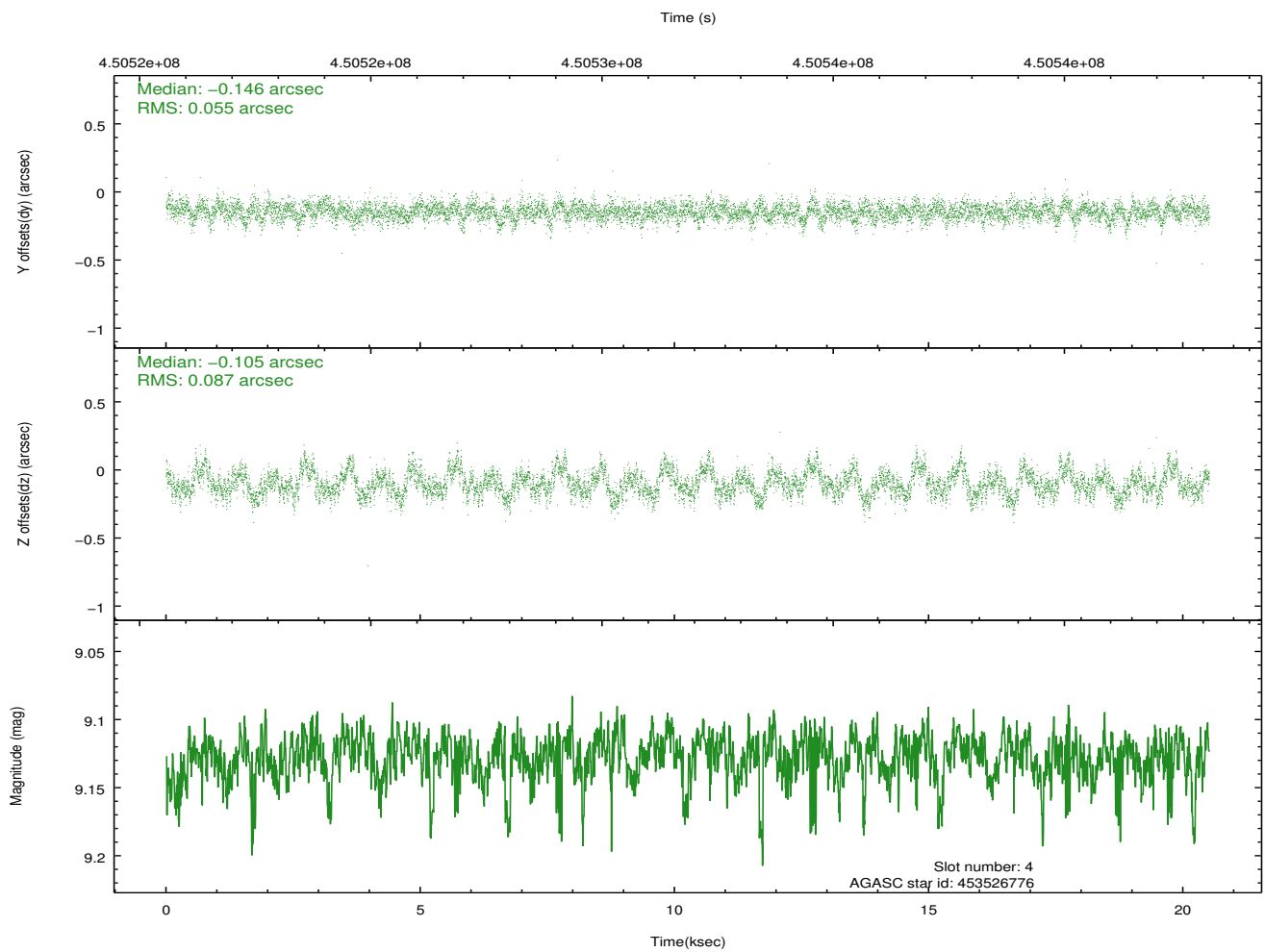
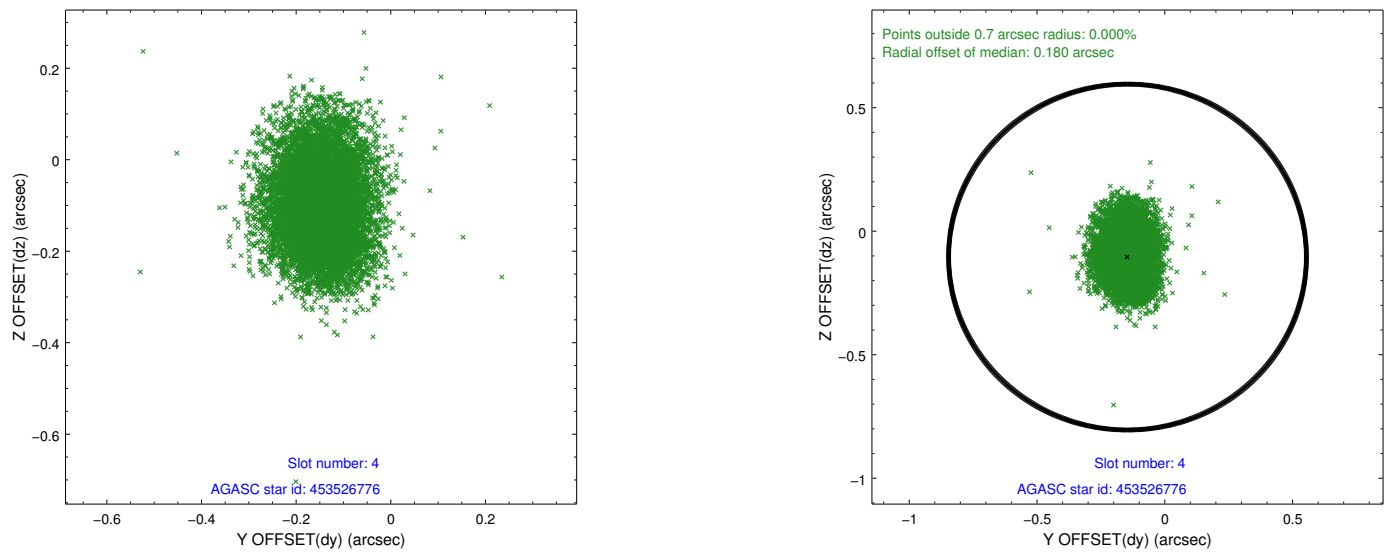
slot	status	id	mag	n_pts	med_dy	med_dz	dr1	dr2	ra	dec	mean_y	mean_z
0	FID	ACIS-S-2	6.96	5004	-0.132	-0.034	0.007	0.011	0.000000	0.000000	-768.35	-1736.03
1	FID	ACIS-S-4	7.05	5005	0.265	0.073	0.006	0.011	0.000000	0.000000	2145.24	172.36
2	FID	ACIS-S-5	7.07	5005	-0.164	-0.030	0.007	0.011	0.000000	0.000000	-1820.99	166.14
3	GUIDE	453524576	8.21	10010	-0.024	-0.136	0.085	0.139	199.201887	46.735745	-1775.21	2122.85
4	GUIDE	453526776	9.13	10003	-0.146	-0.105	0.108	0.181	198.324802	47.032178	351.28	994.45
5	GUIDE	453527400	9.07	10001	0.107	0.277	0.084	0.135	199.255489	47.848221	-1997.14	-1877.69
6	GUIDE	453527904	9.29	10004	0.052	0.034	0.113	0.177	198.045612	47.556000	965.02	-914.48
7	GUIDE	453524992	8.22	10009	0.010	-0.075	0.079	0.125	197.874605	46.952147	1466.94	1240.75

2.4 Star Slots

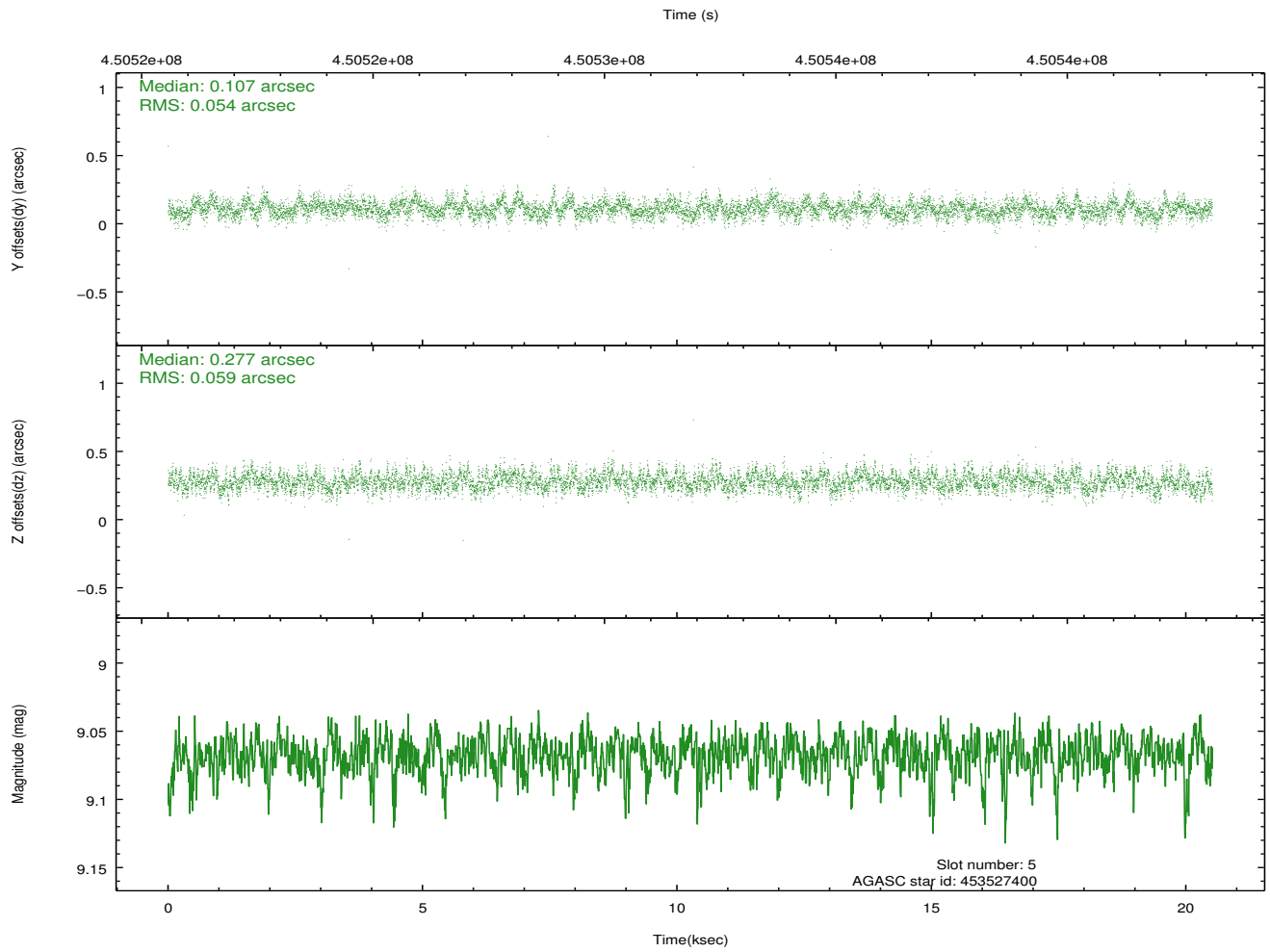
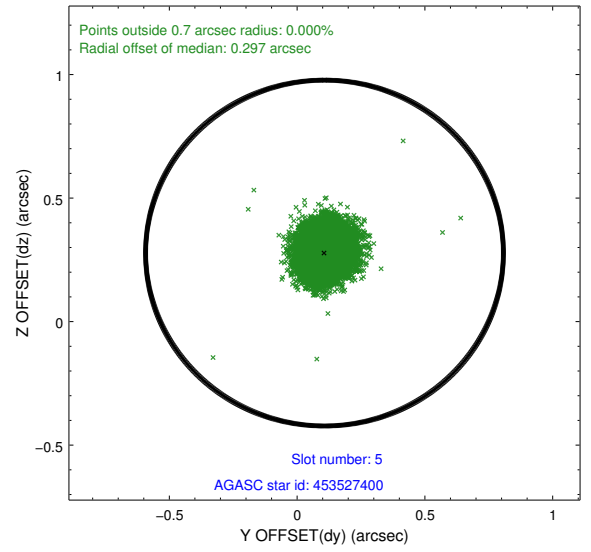
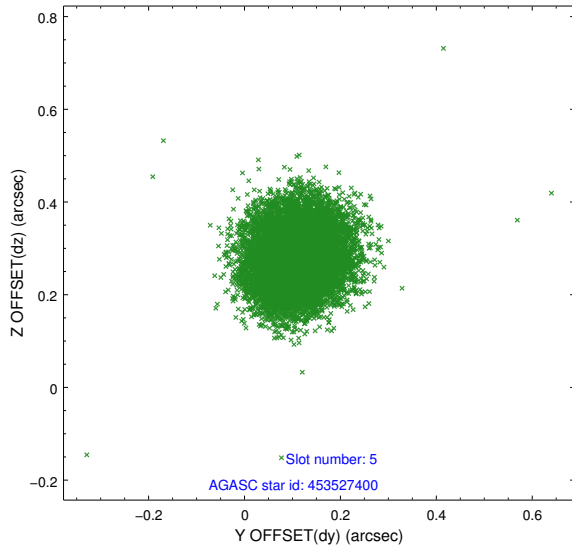
2.4.1 Slot 3



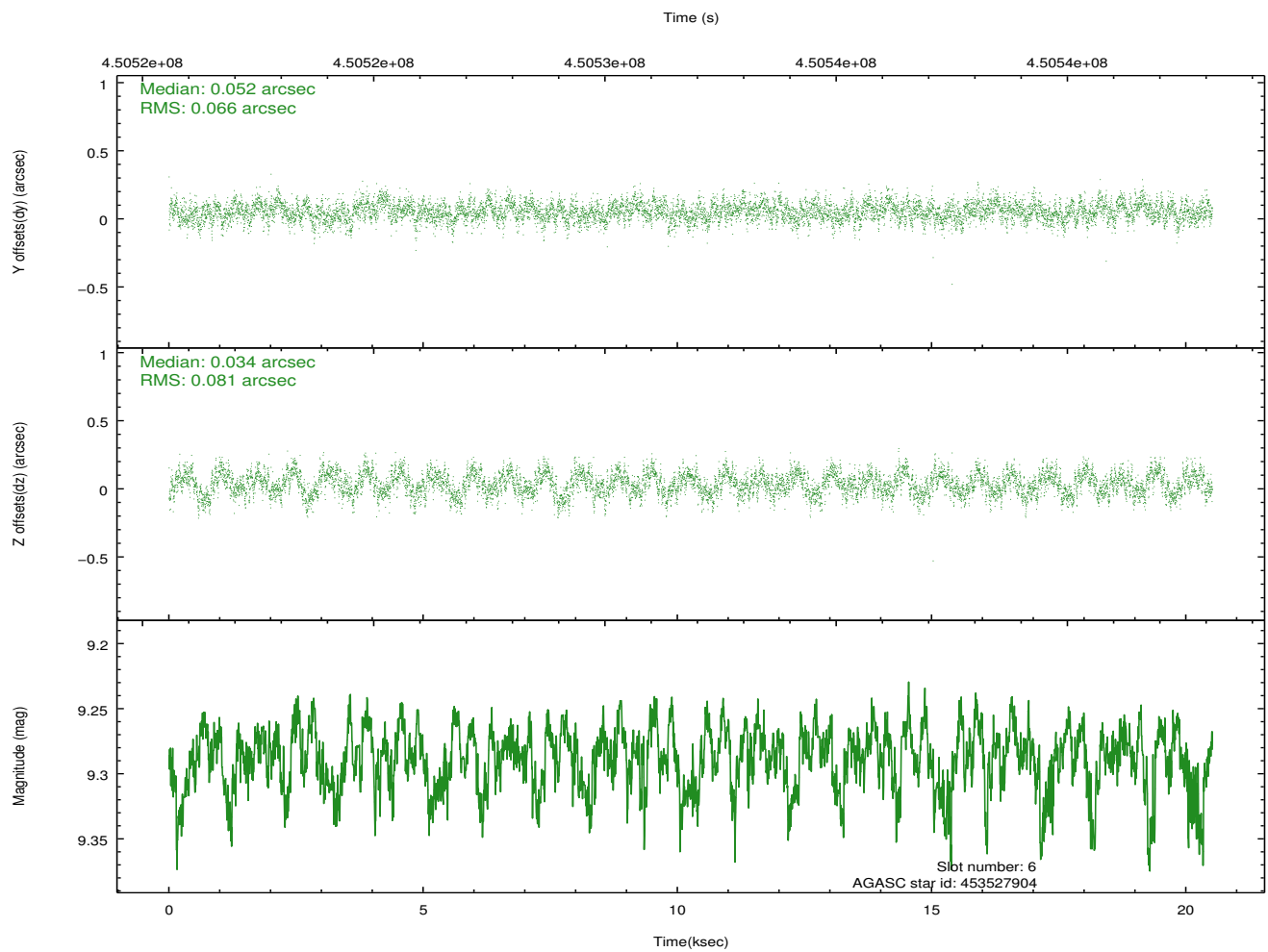
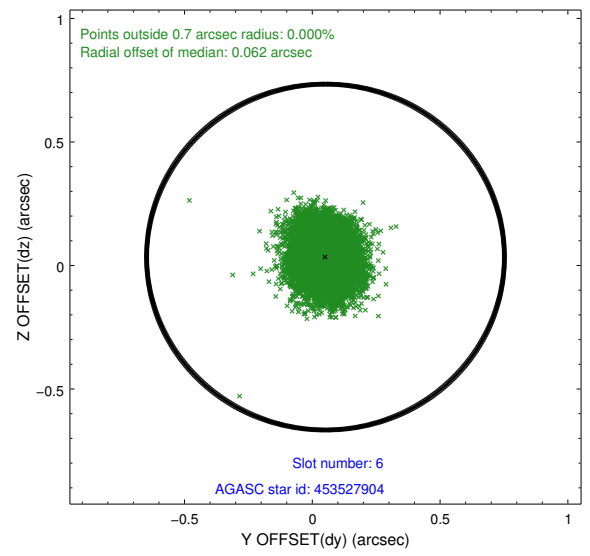
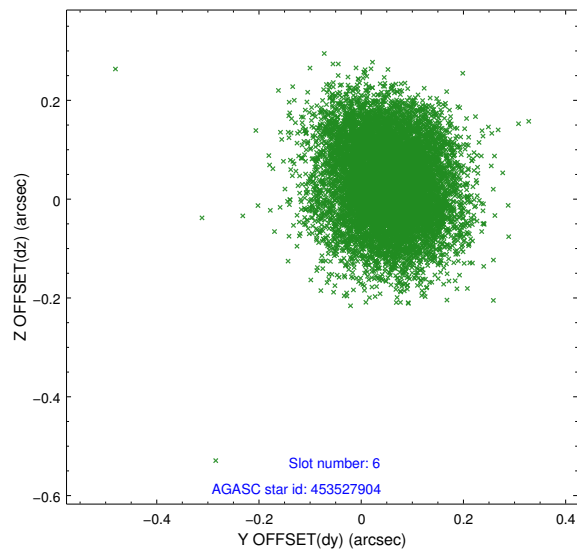
2.4.2 Slot 4



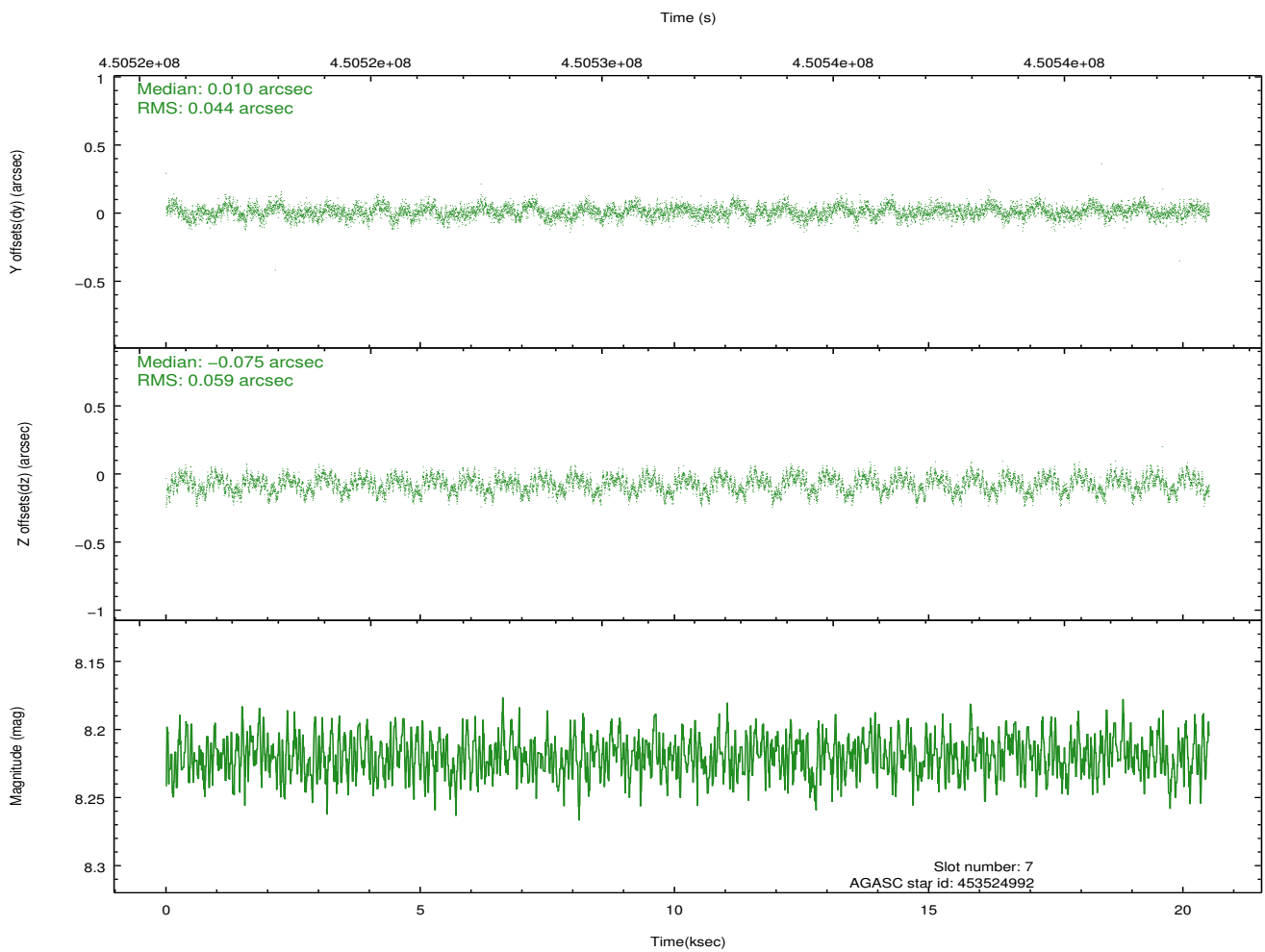
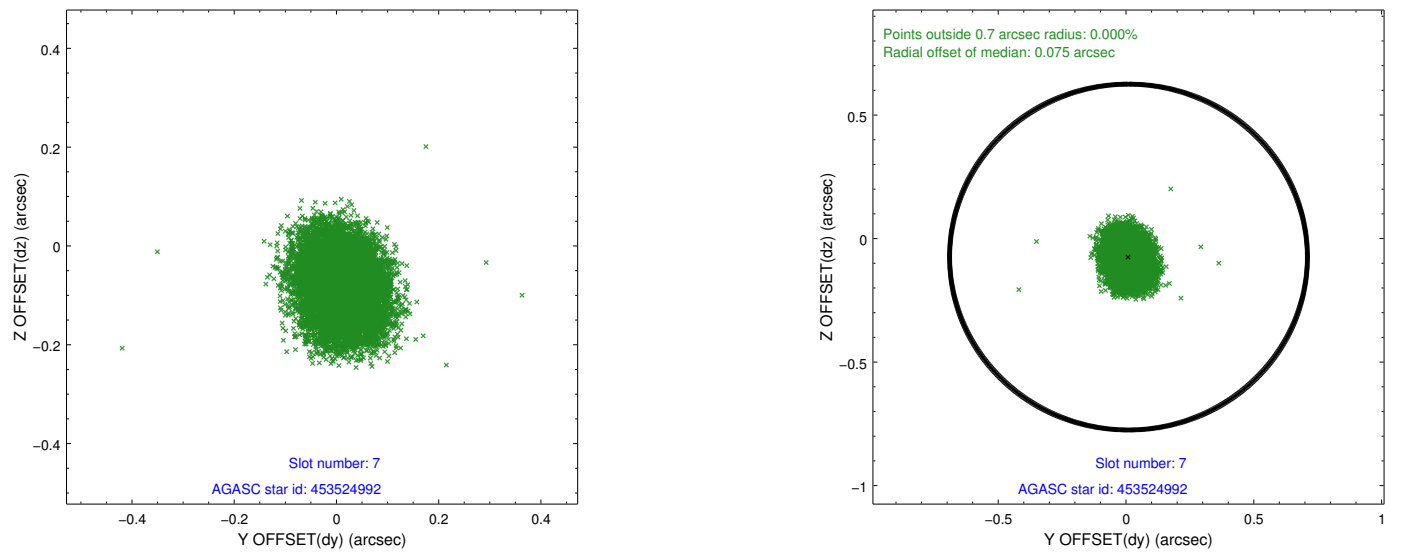
2.4.3 Slot 5



2.4.4 Slot 6

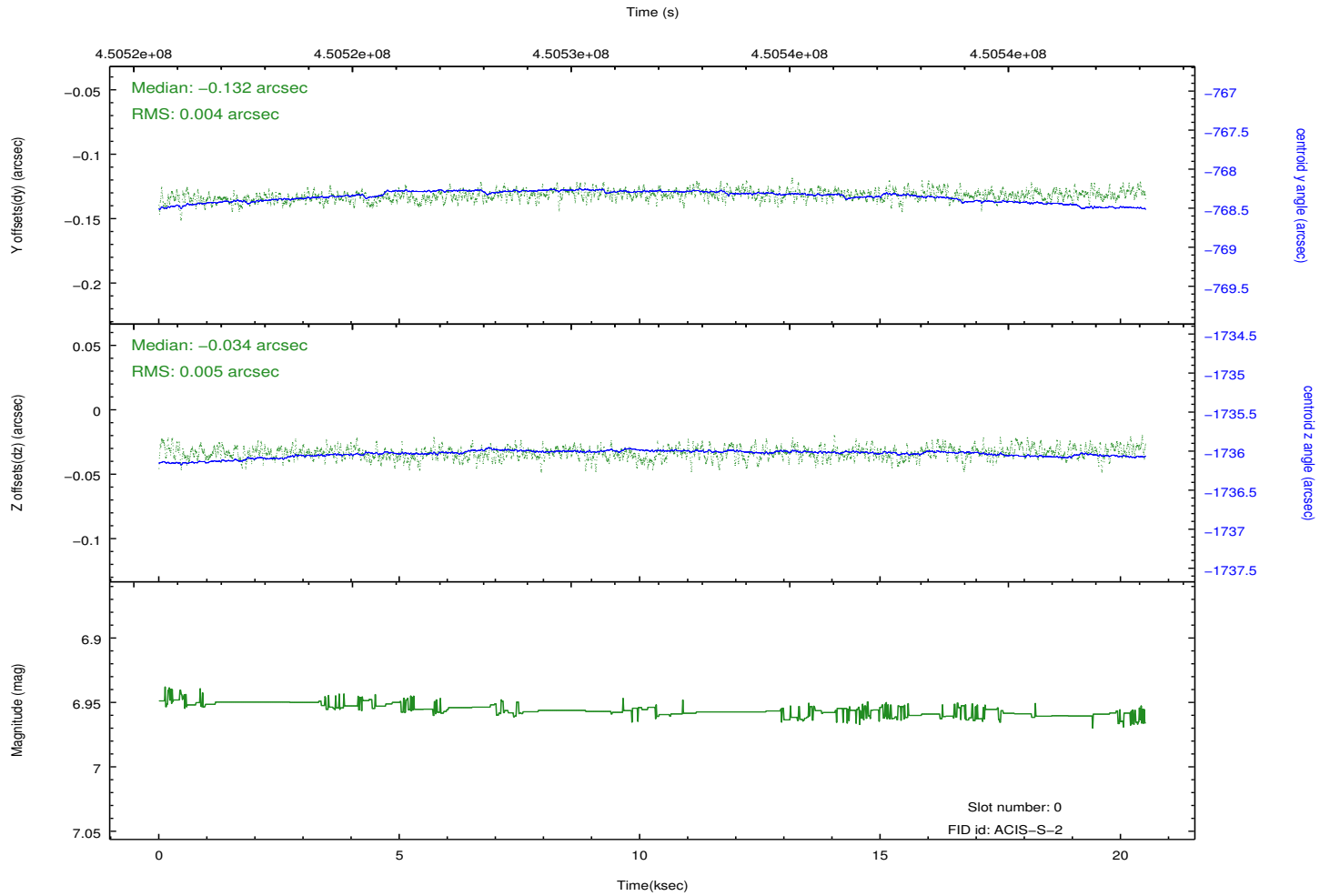
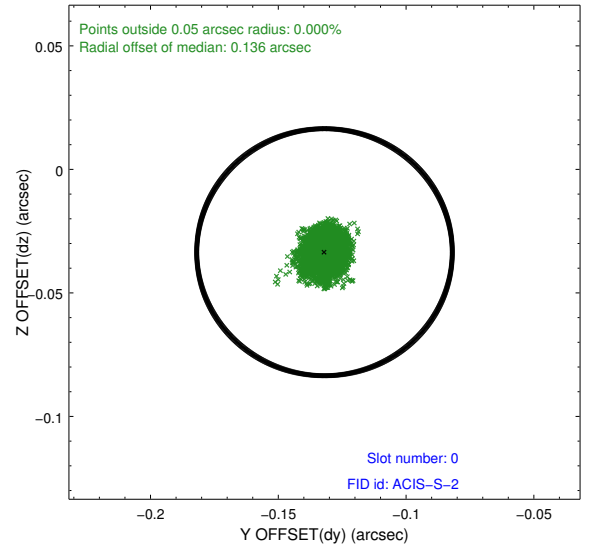
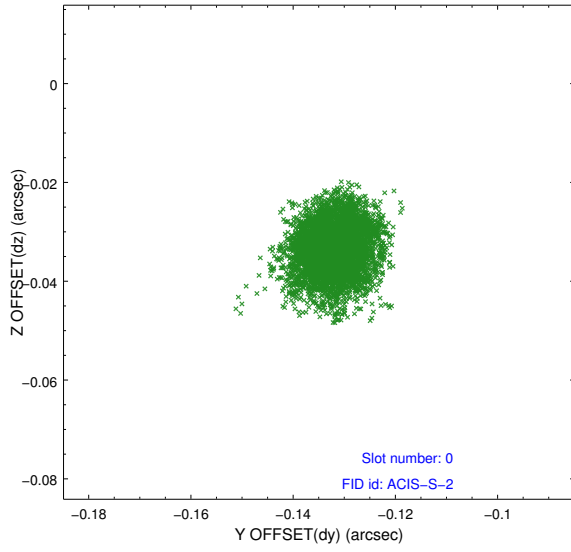


2.4.5 Slot 7

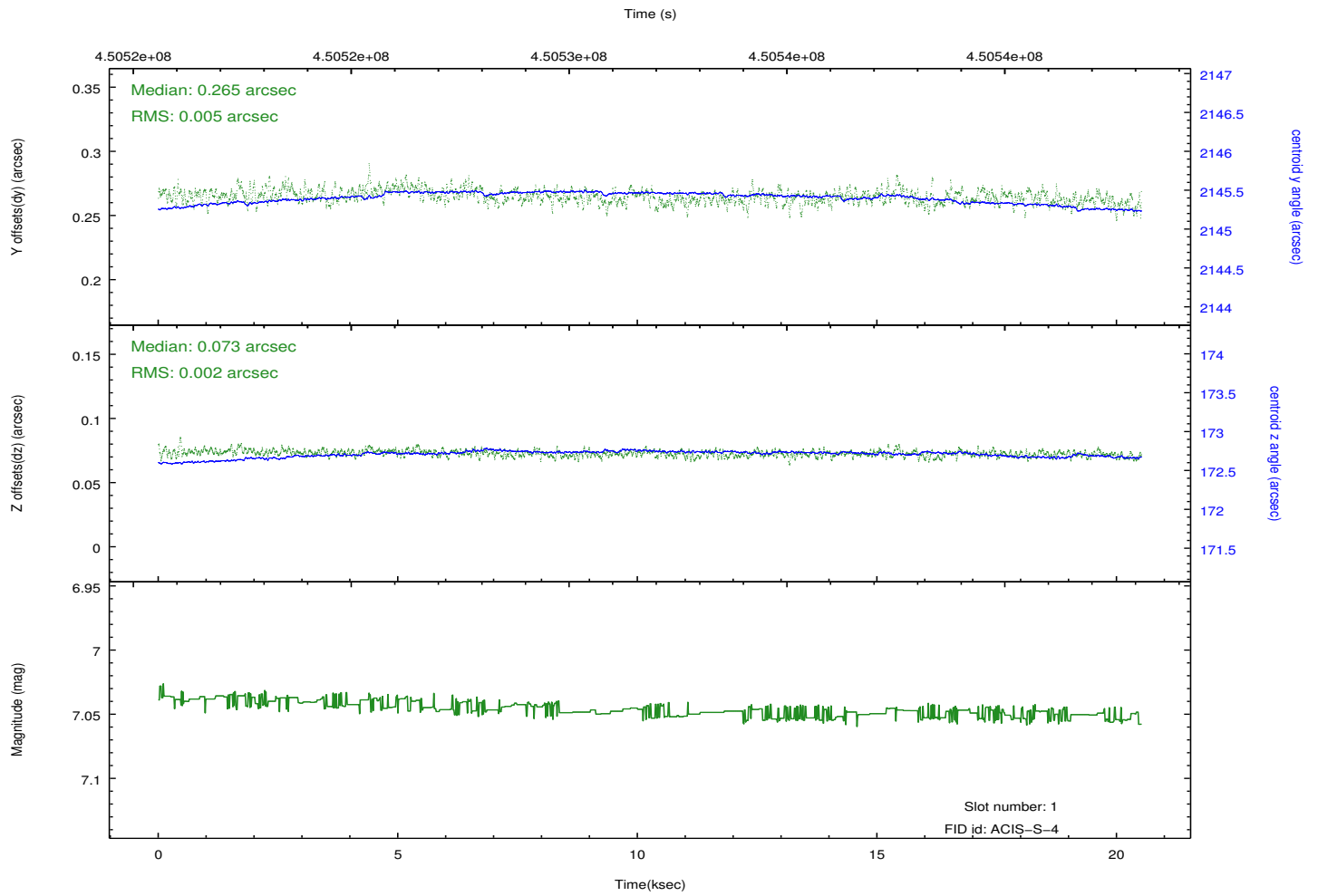
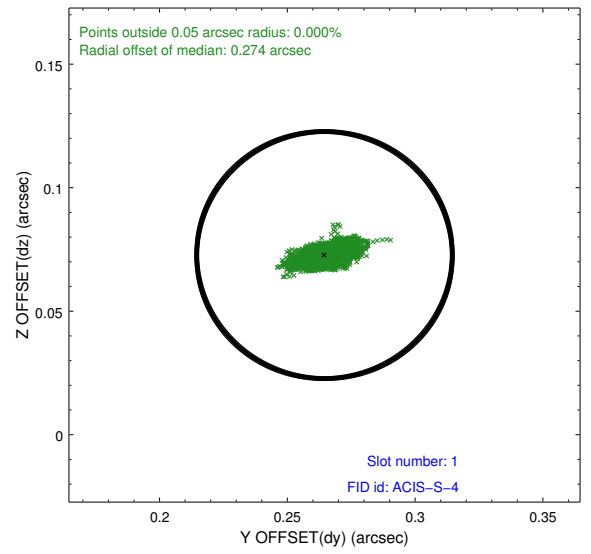
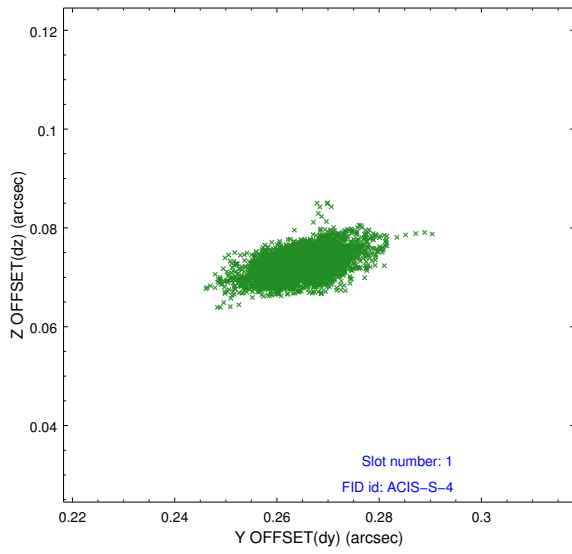


2.5 FID Slots

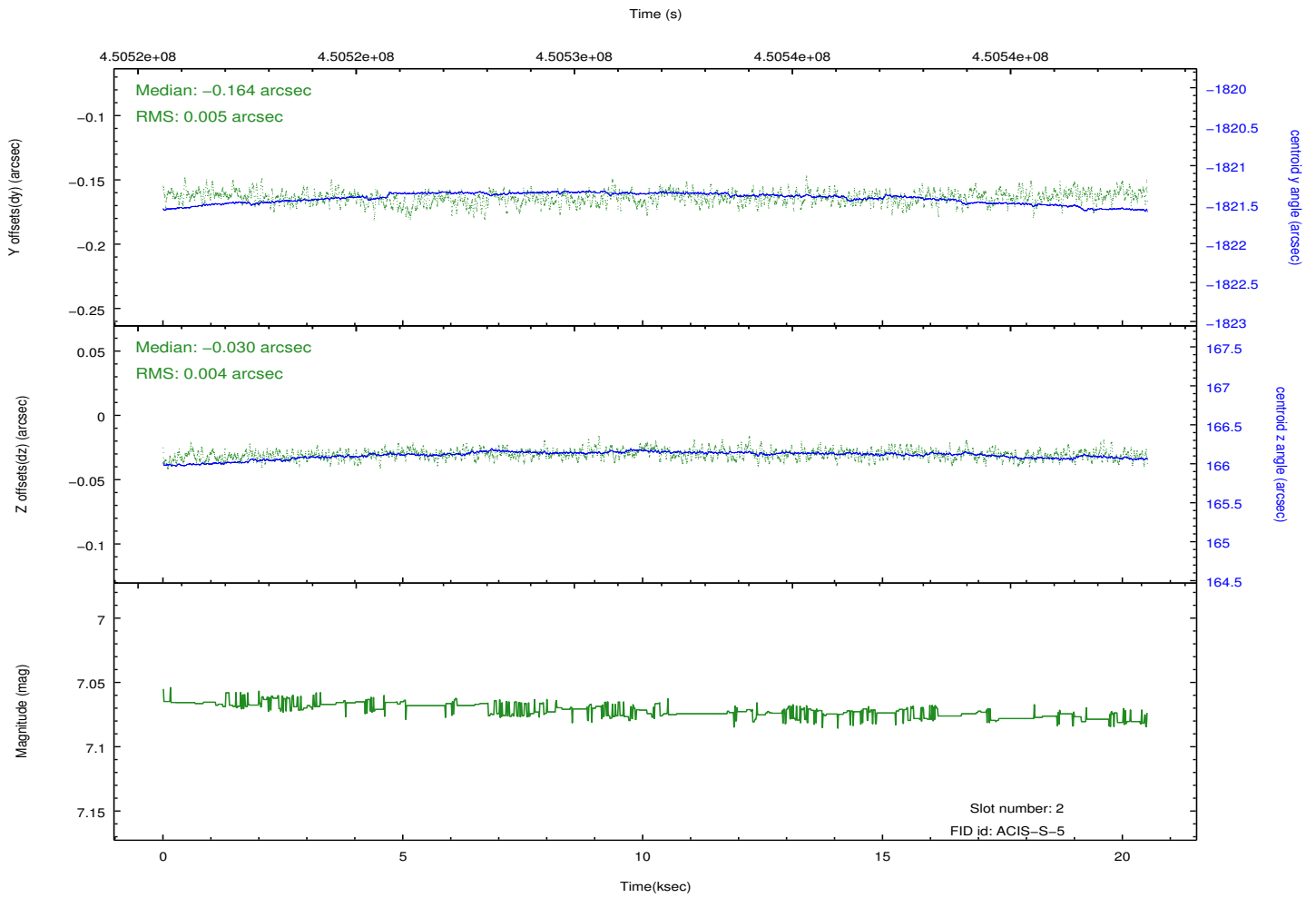
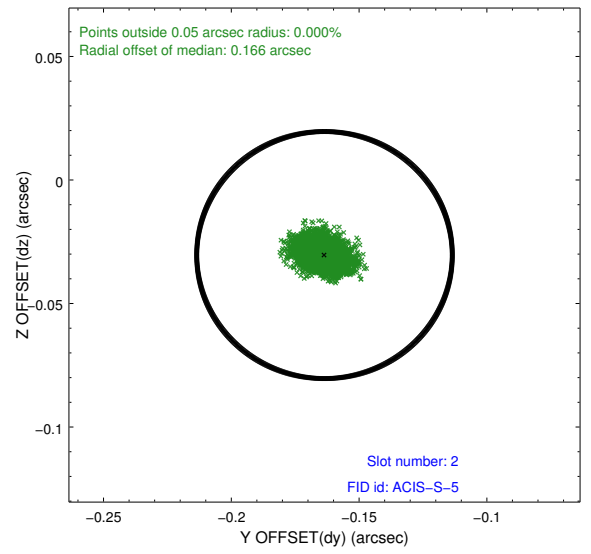
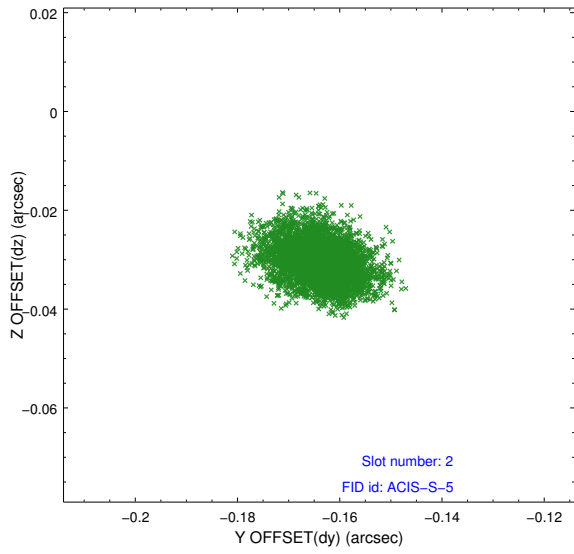
2.5.1 Slot 0



2.5.2 Slot 1



2.5.3 Slot 2



A Summary

A.1 Status

V&V Scientist	Joy Nichols
V&V Date (YYYY-MM-DD)	2012.04.12
V&V Edition	1
V&V Disposition and Status	OK
V&V Charge Time	20.398000156879

A.2 Comments