

V&V Reference Report

L2 ASCDS Version : 8.4.4

Observation 14430 - L2 Version 1
Chandra X-Ray Center

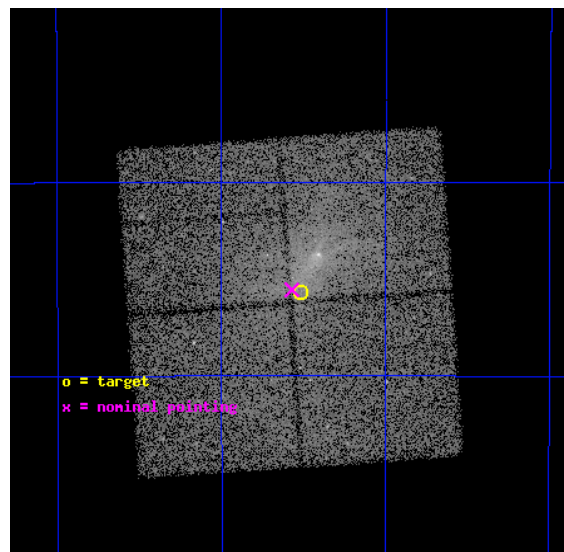
L2 Processing Date : May 28 2012

Contents

1	Front	2
2	OBI	3
2.1	OBI	3
2.1.1	Images	3
2.1.2	Bias	3
2.1.3	Parameters	4
2.1.4	Events	4
2.2	Compared Parameters	5
2.3	Aspect	6
2.4	Star Slots	9
2.4.1	Slot 3	9
2.4.2	Slot 4	10
2.4.3	Slot 5	11
2.4.4	Slot 6	12
2.4.5	Slot 7	13
2.5	FID Slots	14
2.5.1	Slot 0	14
2.5.2	Slot 1	15
2.5.3	Slot 2	16
A	Summary	17
A.1	Status	17
A.2	Comments	17

1 Front

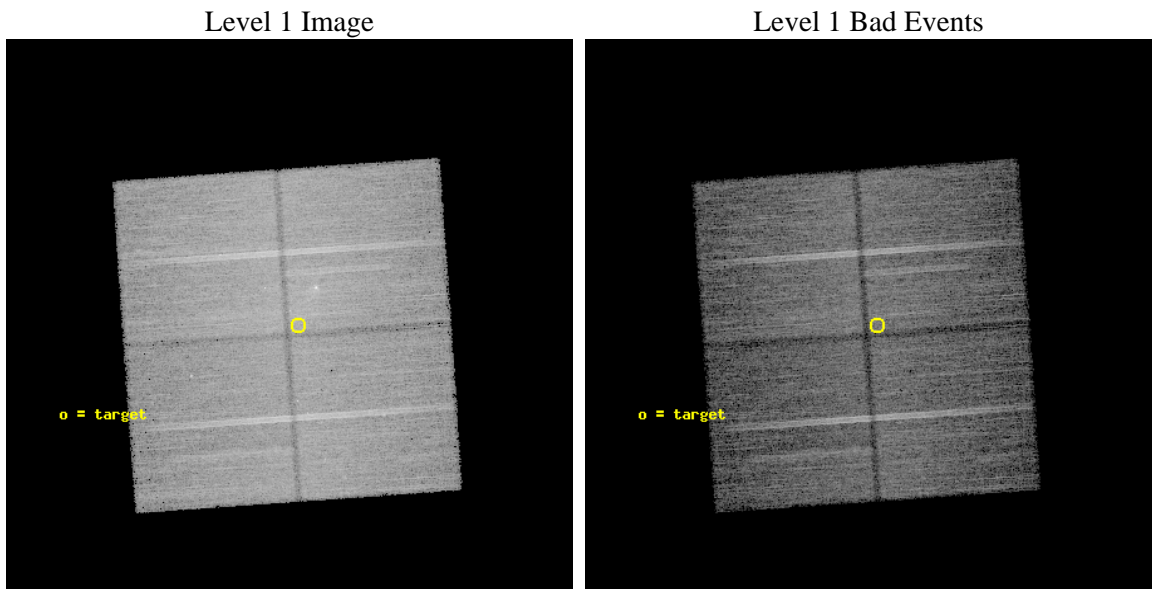
seq_num	501600	Sequence number
obs_id	14430	Observation id
title	Bowing to Pressure During the Reformation: A Study of the Composite SNR G327.1-1.1	Proposal title
observer	Dr. Patrick Slane	Principal investigator
object	G327.1-1.1	Source name
dtcycle	0	
cycle	P	events from which exps? Prim/Second/Both
ra_targ	238.629167	Observer's specified target RA [deg]
dec_targ	-55.094444	Observer's specified target Dec [deg]
ra_nom	238.6428950521	Nominal RA [deg]
dec_nom	-55.092591026405	Nominal Dec [deg]
roll_nom	356.01994464728	Nominal Roll [deg]
revision	1	Processing version of data
ontime	37082.159274876	Sum of GTIs [s]
livetime	36597.653564461	Livetime [s]
ontime0	37085.30028522	Sum of GTIs [s]
ontime1	37085.30028522	Sum of GTIs [s]
ontime2	37085.30028522	Sum of GTIs [s]
ontime3	37082.159274876	Sum of GTIs [s]
l2events	103705	Number of level 2 events



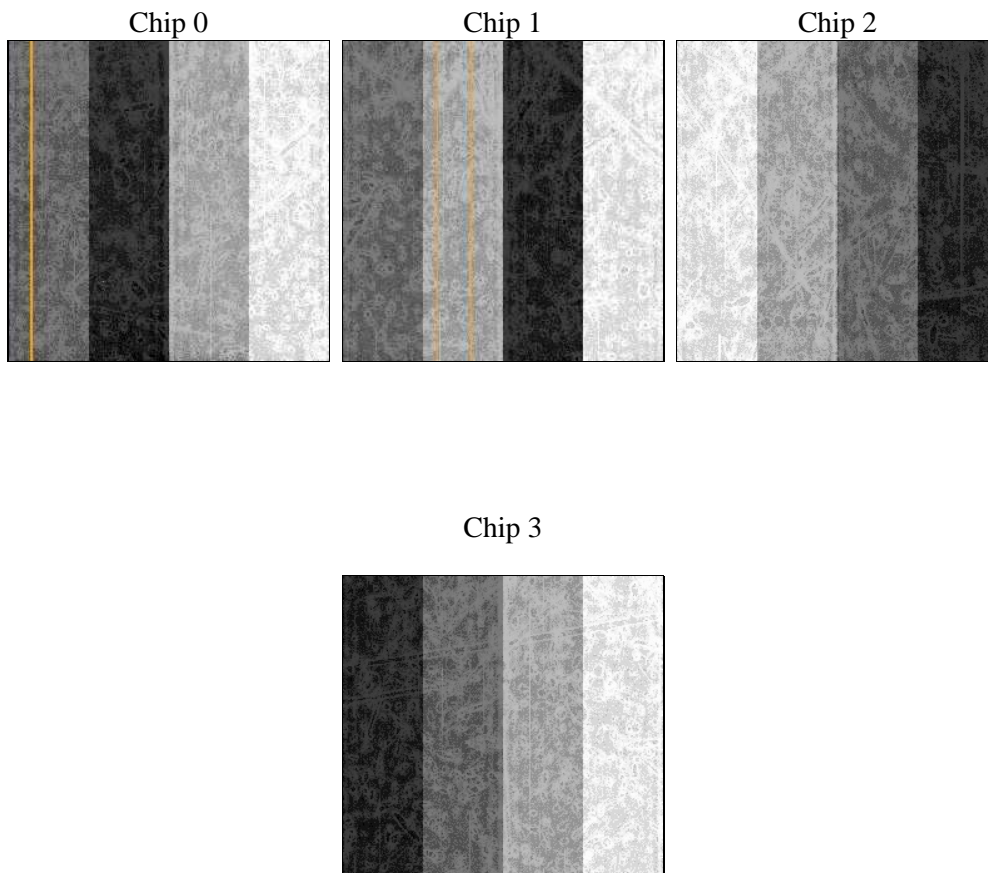
2 OBI

2.1 OBI

2.1.1 Images



2.1.2 Bias



2.1.3 Parameters

obi_num	0	Obi number	sched_exp_time	37000.000000	[s] Scheduled observation exposure time
ascdsver	8.4.4	Processing system revision	ontime	37082.159274876	Sum of GTIs [s]
caldsver	4.4.9	 	ontime0	37085.30028522	Sum of GTIs [s]
date	2012-05-28T06:45:27	Date and time of file creation	ontime1	37085.30028522	Sum of GTIs [s]
revision	1	Processing version of data	ontime2	37085.30028522	Sum of GTIs [s]
			ontime3	37082.159274876	Sum of GTIs [s]
			l1events	887232	Number of level 1 events

2.1.4 Events

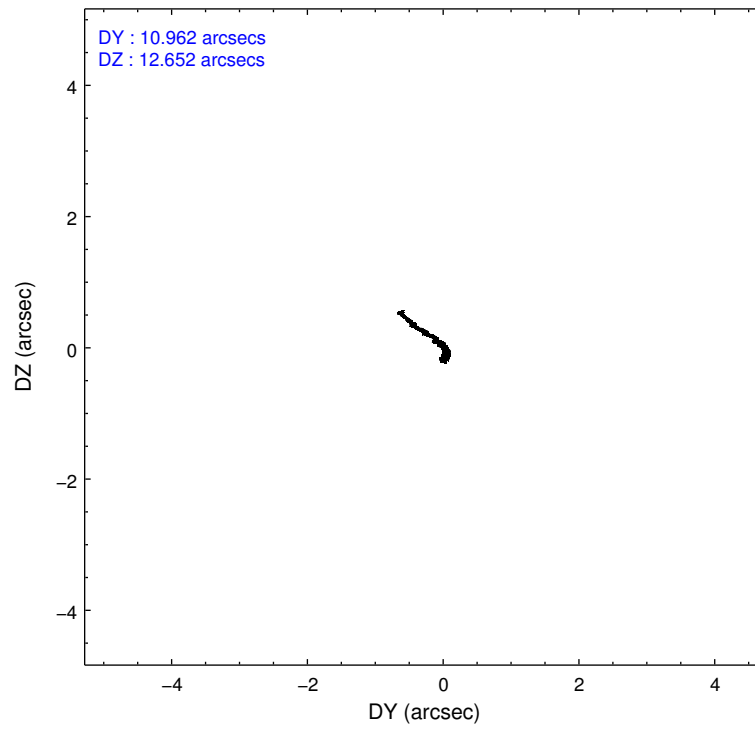
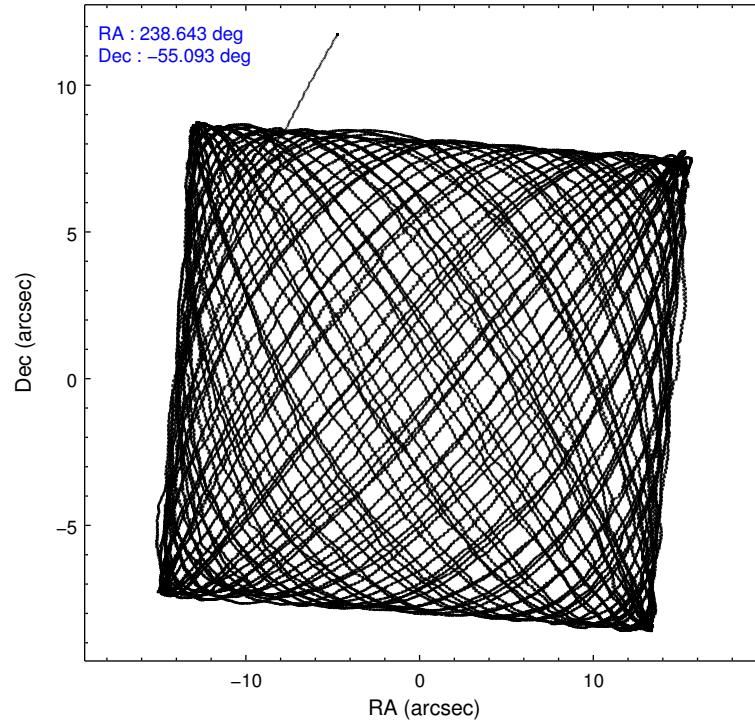
	ccd 0	ccd 1	ccd 2	ccd 3
level 1 events	197865	209314	241731	238322
rejected events	168202	180260	209543	202121
rejected %	85%	86%	86%	84%

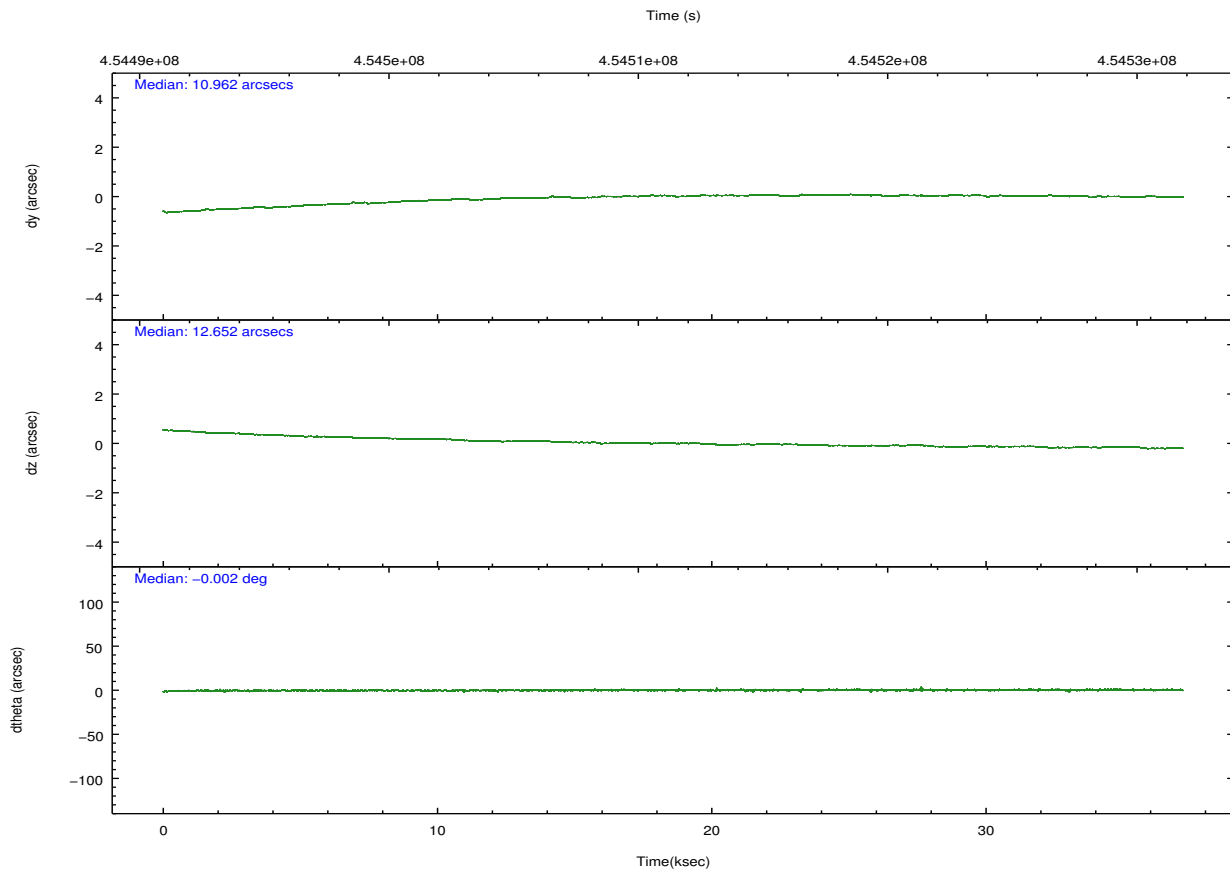
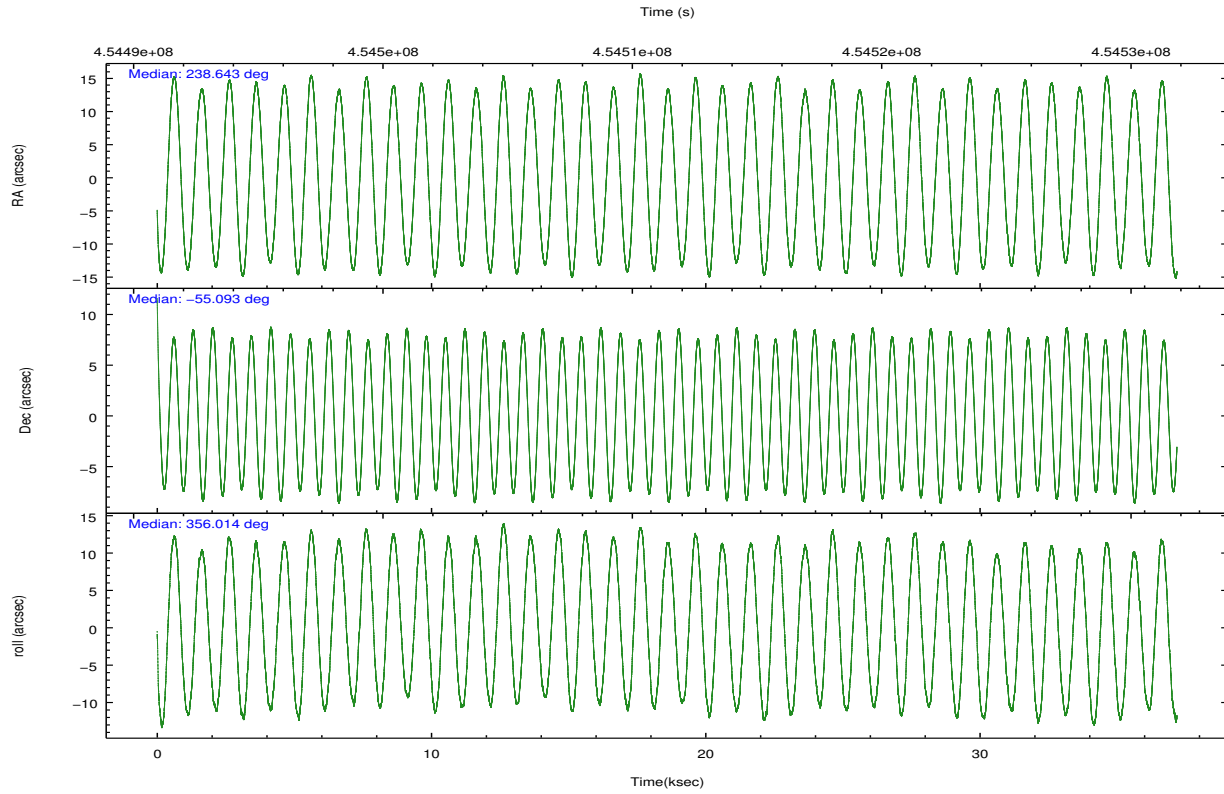
	ccd 0	ccd 1	ccd 2	ccd 3
grade 0 events	12505	11745	14473	18811
	6%	5%	5%	7%
grade 1 events	126	123	146	193
	0%	0%	0%	0%
grade 2 events	7618	6607	7960	6878
	3%	3%	3%	2%
grade 3 events	2516	2728	2480	2775
	1%	1%	1%	1%
grade 4 events	2432	2659	2721	2796
	1%	1%	1%	1%
grade 5 events	7769	8510	7348	8972
	3%	4%	3%	3%
grade 6 events	4597	5318	4558	4947
	2%	2%	1%	2%
grade 7 events	160302	171624	202045	192950
	81%	81%	83%	80%

2.2 Compared Parameters

Parameter	Planned	Actual	Parameter	Planned	Actual
Instrument	ACIS	ACIS	Obspar format version number	7	7
Detector	ACIS-0123	ACIS-0123	Obspar file type	PREDICTED	ACTUAL
Grating	NONE	NONE	Obspar update status	NONE	UPDATED
Data mode	VFAINT	VFAINT	Number of optional ACIS chips dropped	0	0
Observation mode	POINTING	POINTING	On-chip summing requested	N	N
[deg] Pointing RA	238.599796	238.6428950521011	Subarray requested	NONE	NONE
[deg] Pointing Dec	-55.104735	-55.09259102640507	Alternating exposures requested	N	N
[deg] Pointing Roll	355.775908	356.0199446472785	[s] Primary exposure time	0.000000	3.1
[mm] SIM focus pos	-0.782348	-0.7809083437167272			
[mm] SIM defocus	0	0.001439871863259334			
[mm] SIM translation stage pos	-233.592463	-233.5874344608287			
[mm] SIM translation stage offset	0	-0.005018542100998502			
[s] Observation start time (MET)	454492978.184000	454492042.52041			
Observation start date	2012-05-27T08:01:52	2012-05-27T07:47:22			
[s] Observation end time (MET)	454529978.184000	454530981.75998			
Observation end date	2012-05-27T18:18:32	2012-05-27T18:36:21			
Read mode	TIMED	TIMED			

2.3 Aspect



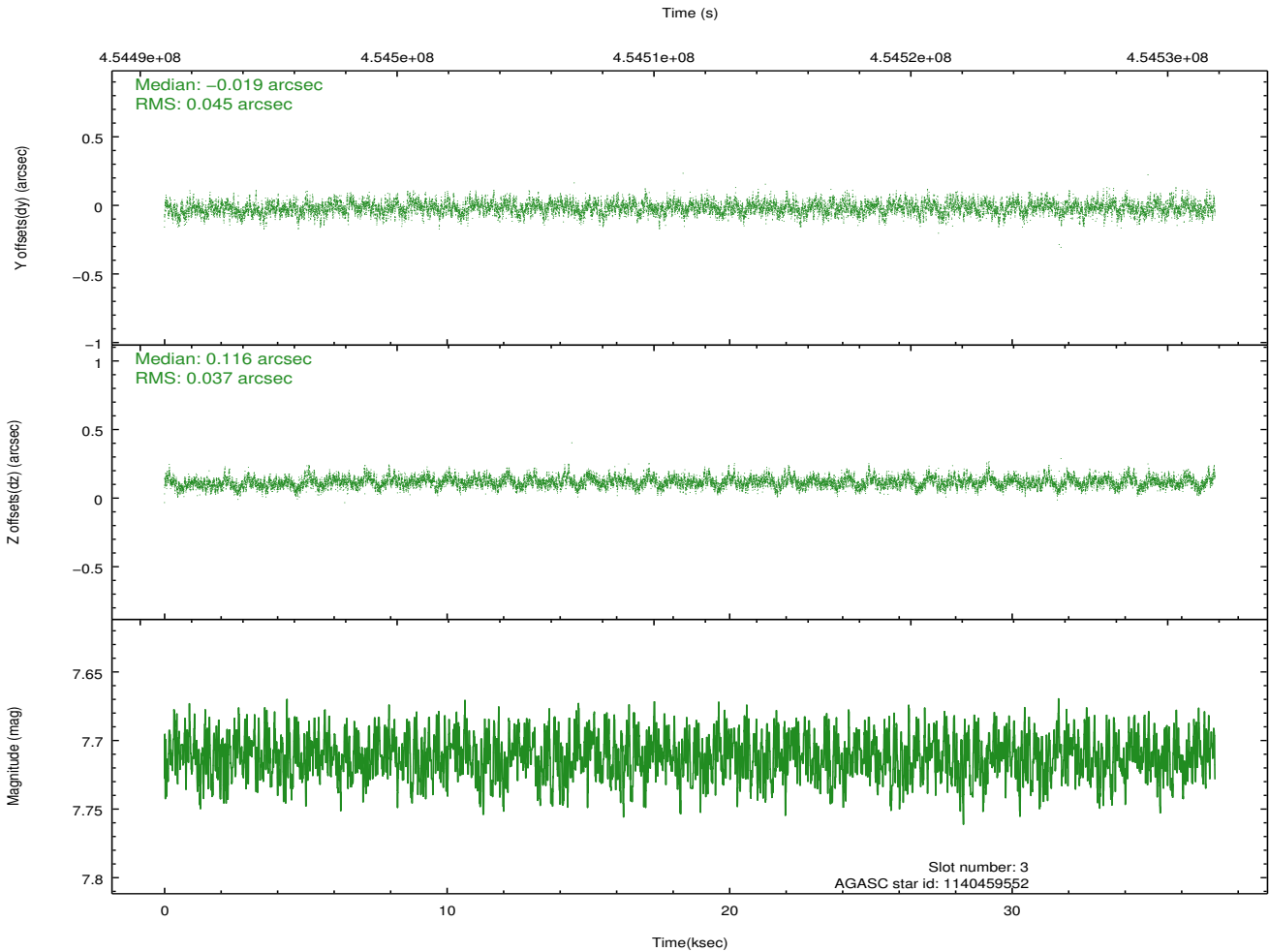
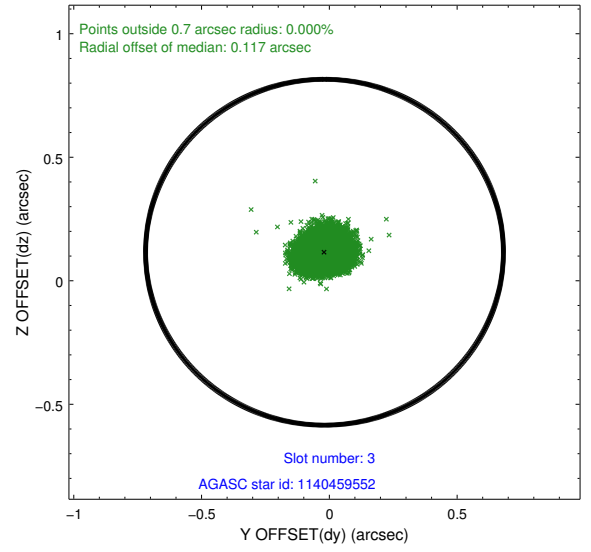
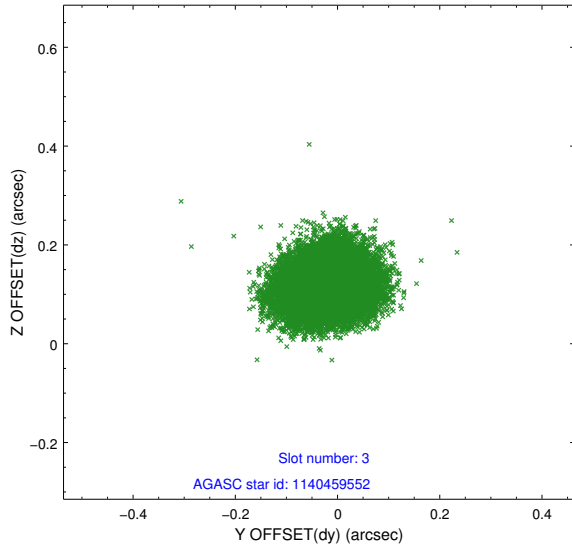


Slot Statistics

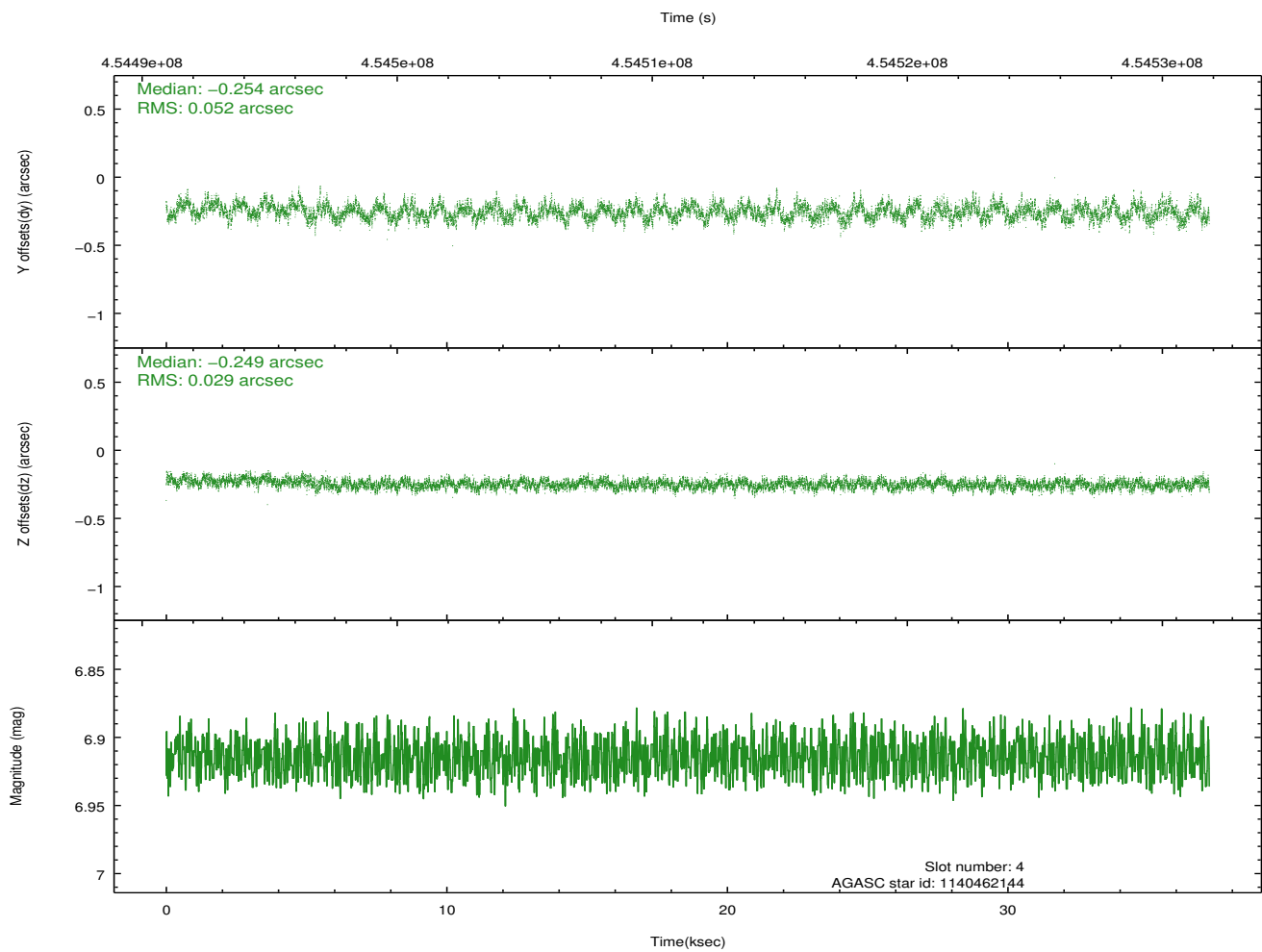
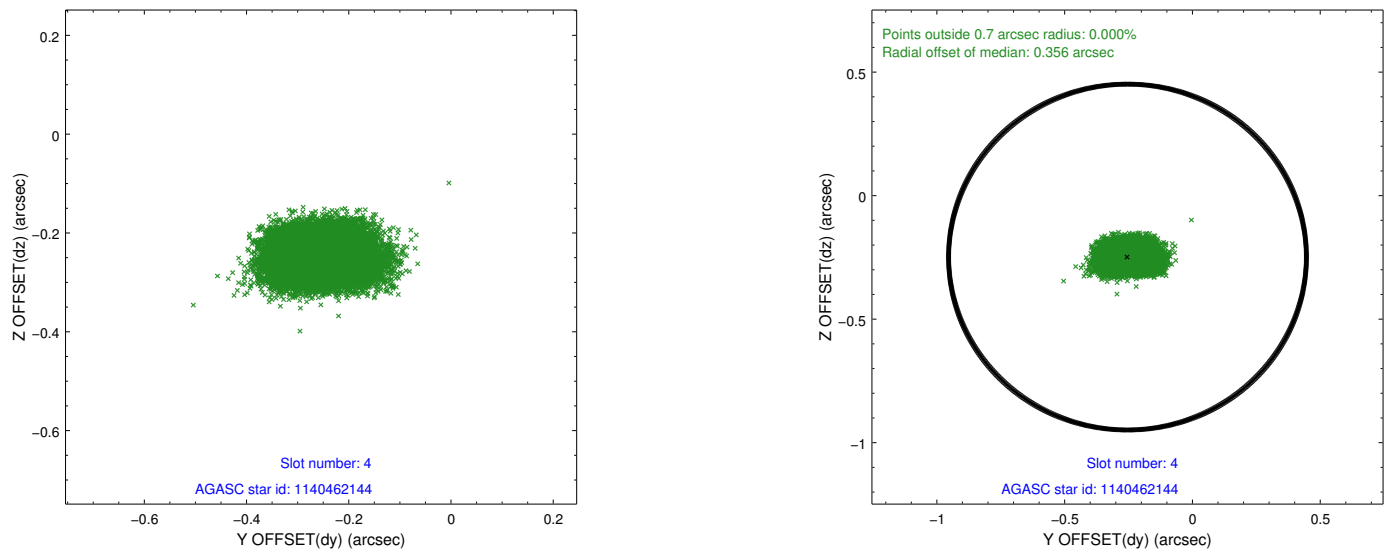
slot	status	id	mag	n_pts	med_dy	med_dz	dr1	dr2	ra	dec	mean_y	mean_z
0	FID	ACIS-I-1	7.08	9069	0.070	-0.014	0.008	0.015	0.000000	0.000000	928.77	-836.26
1	FID	ACIS-I-5	7.07	9069	-0.191	0.084	0.007	0.021	0.000000	0.000000	-1819.57	1061.33
2	FID	ACIS-I-6	7.08	9068	0.031	0.000	0.009	0.015	0.000000	0.000000	394.26	1705.77
3	GUIDE	1140459552	7.71	18135	-0.019	0.116	0.061	0.100	238.146760	-55.555714	-799.73	-1689.83
4	GUIDE	1140462144	6.91	18132	-0.254	-0.249	0.062	0.105	239.669780	-54.707652	2115.20	1572.66
5	GUIDE	1140462520	8.15	18136	0.054	0.005	0.065	0.106	237.718666	-54.642458	-1952.02	1513.09
6	GUIDE	1140463608	8.38	18125	0.113	0.080	0.071	0.115	238.262931	-55.436827	-597.52	-1244.32
7	GUIDE	1140468440	8.65	18133	0.109	0.046	0.071	0.118	239.579652	-55.544544	2108.47	-1445.68

2.4 Star Slots

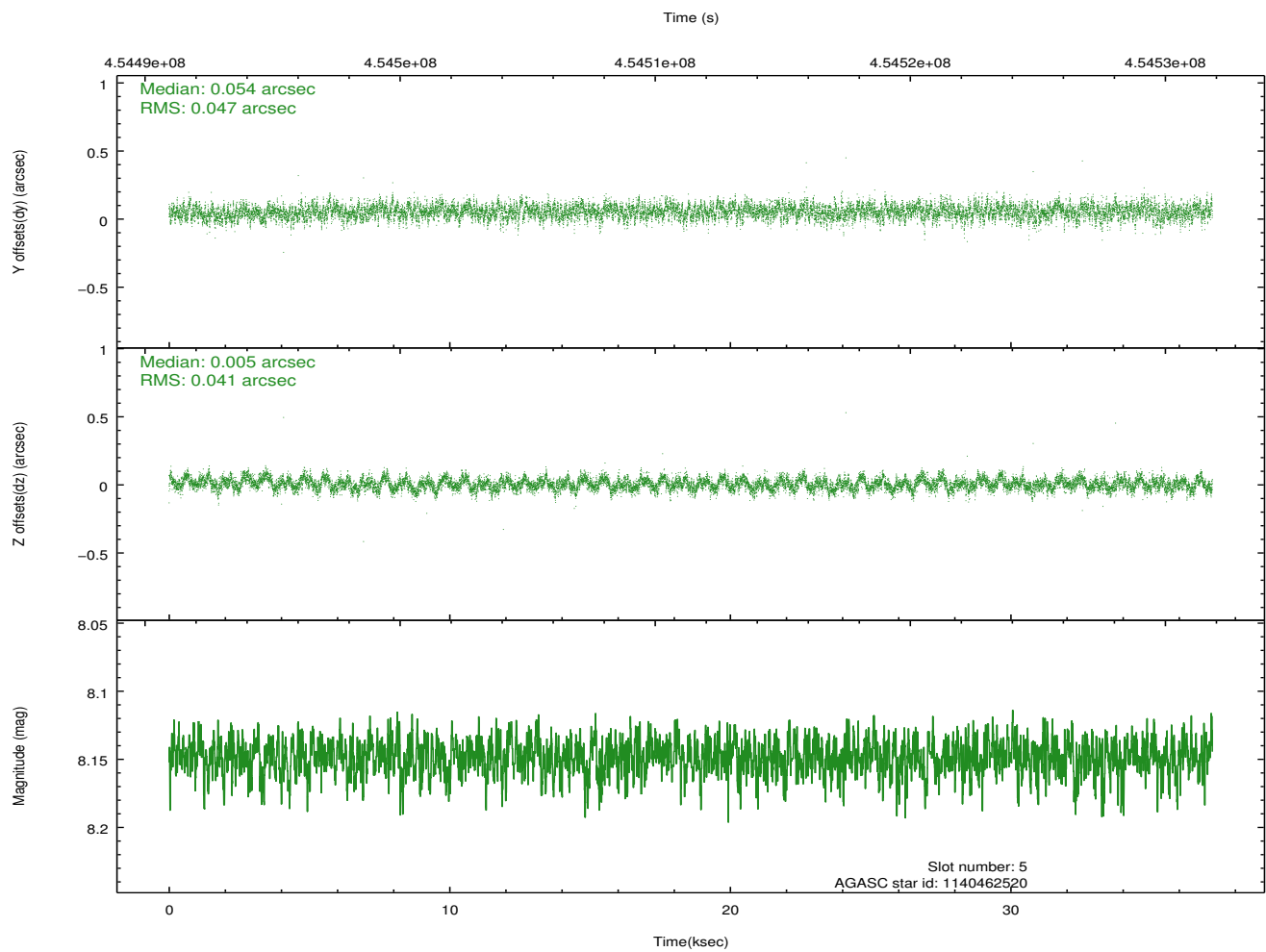
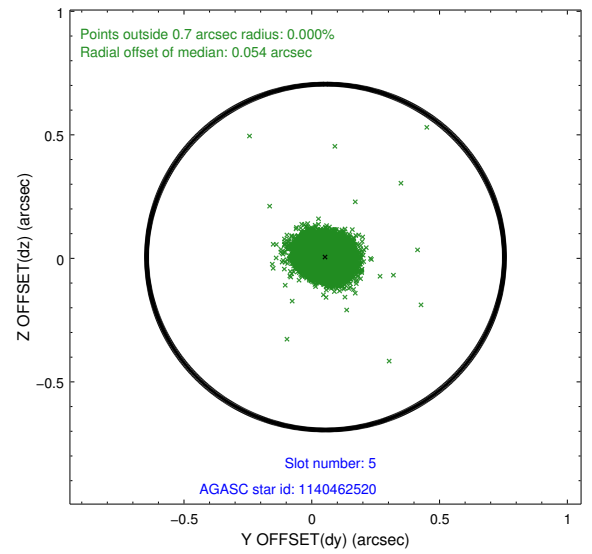
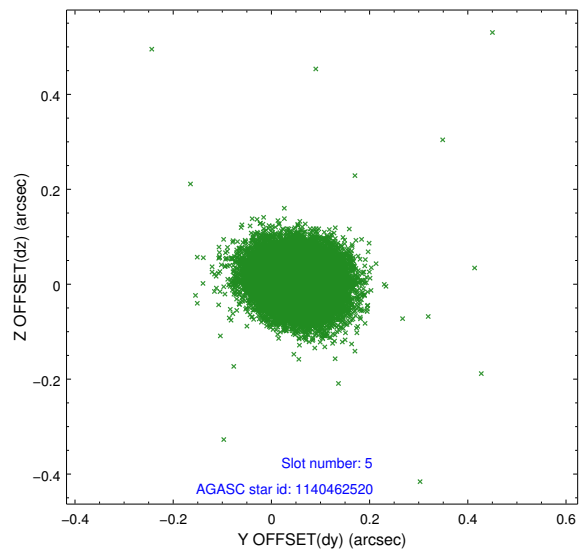
2.4.1 Slot 3



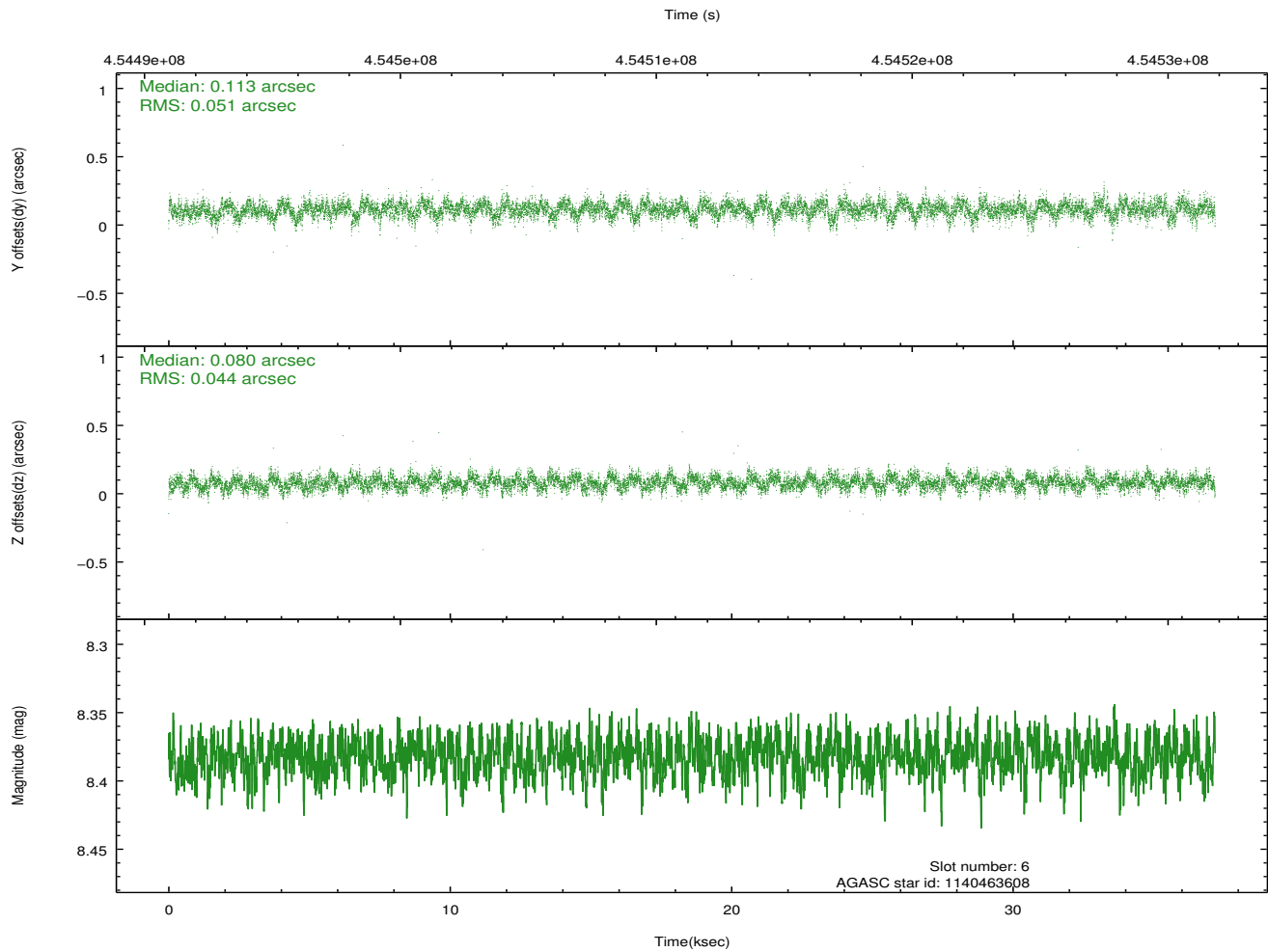
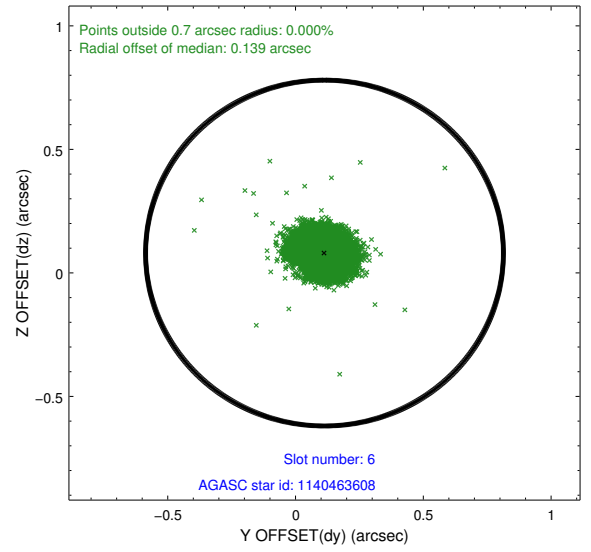
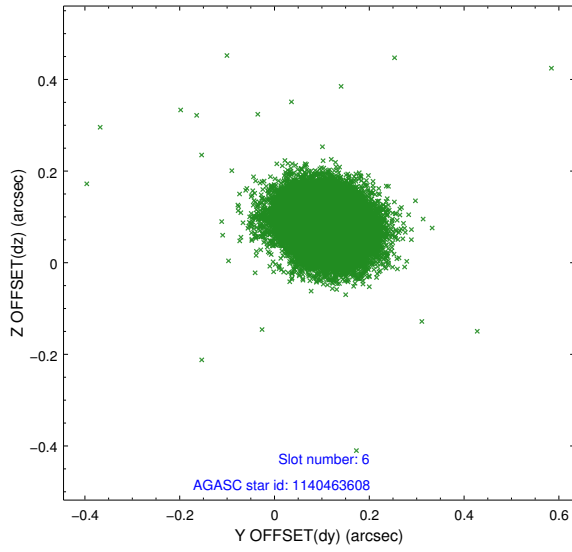
2.4.2 Slot 4



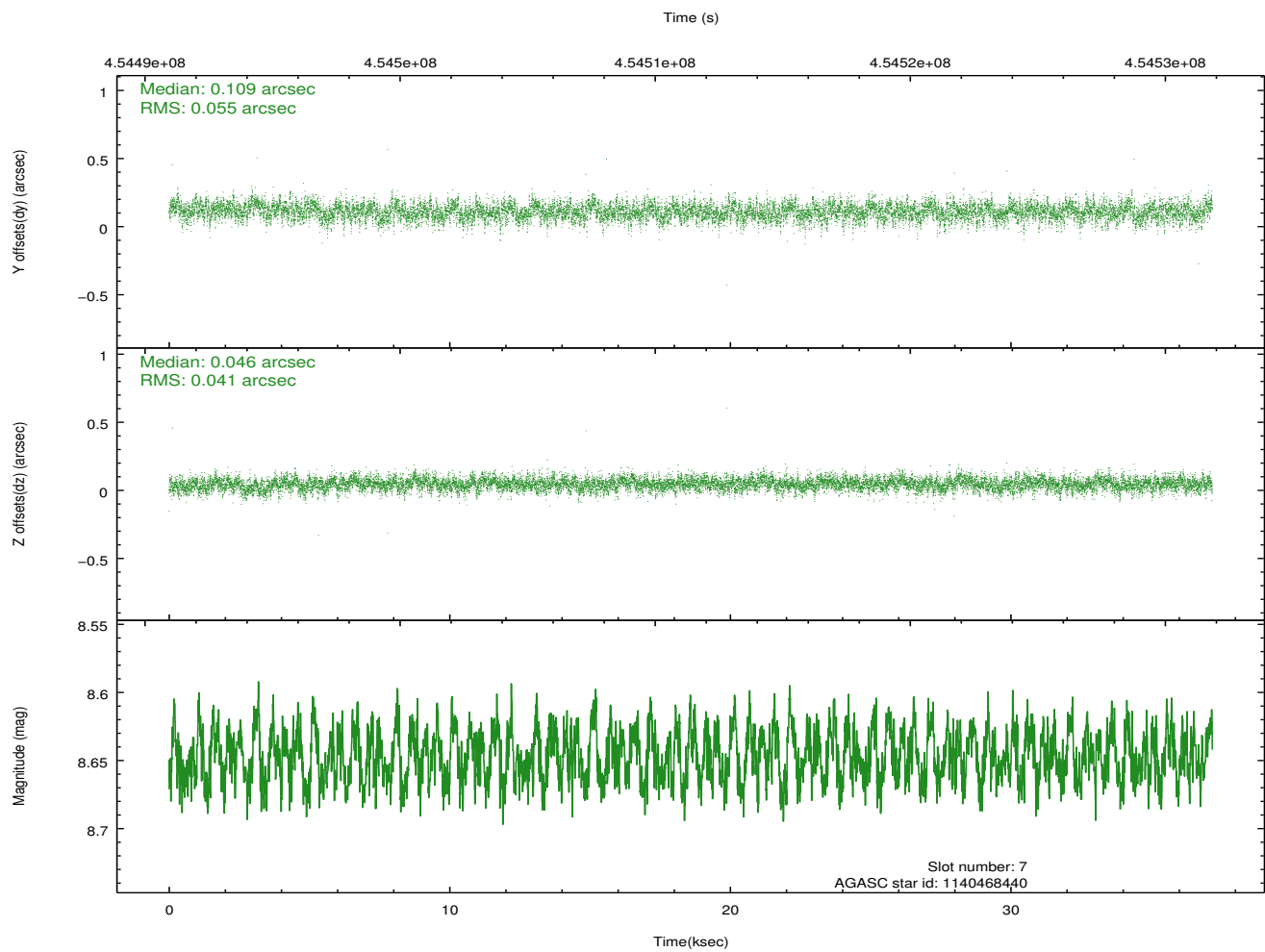
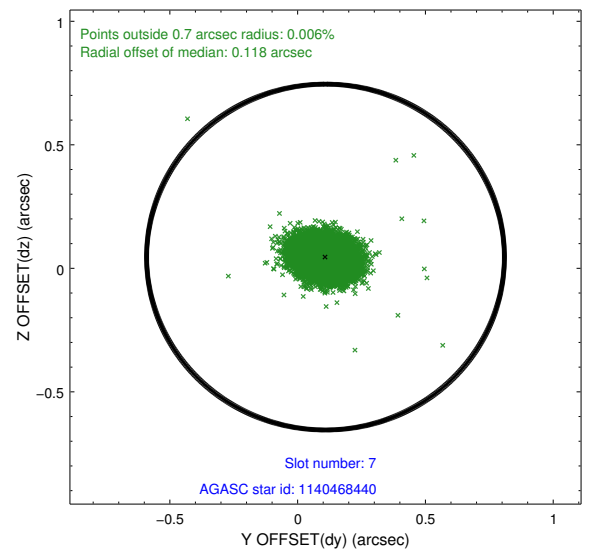
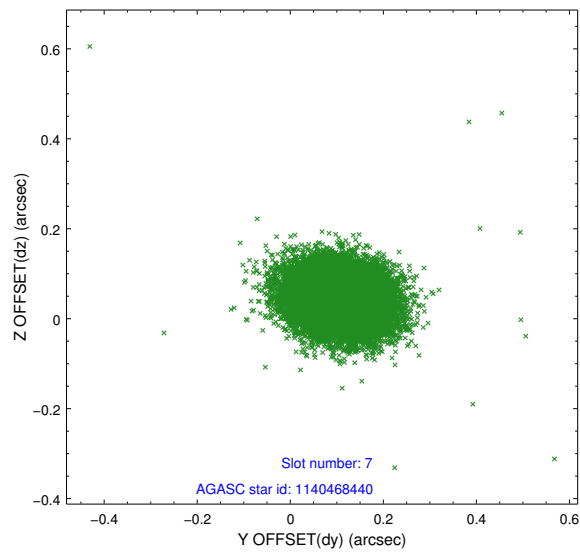
2.4.3 Slot 5



2.4.4 Slot 6

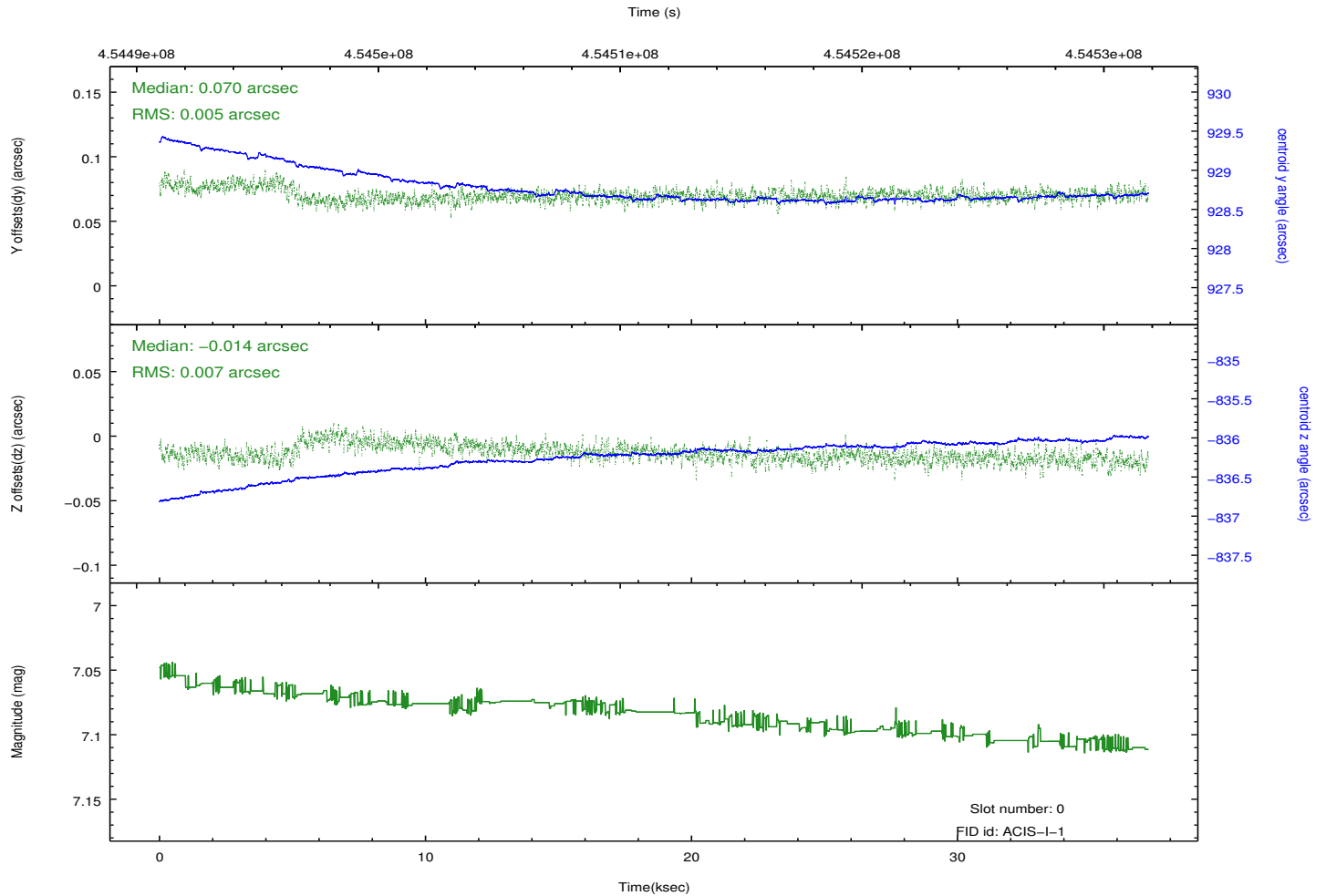
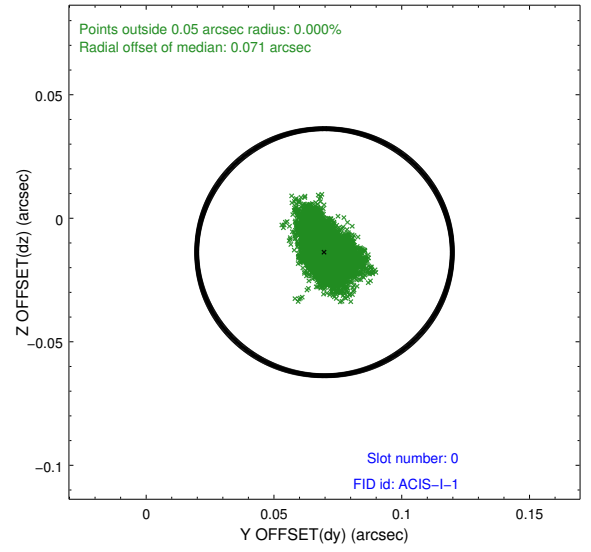
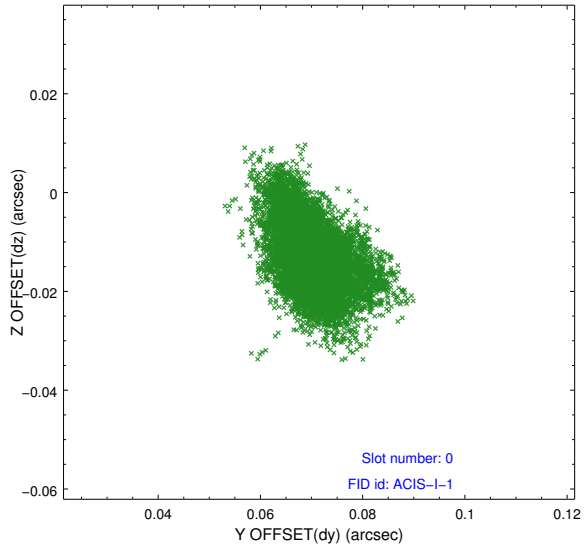


2.4.5 Slot 7

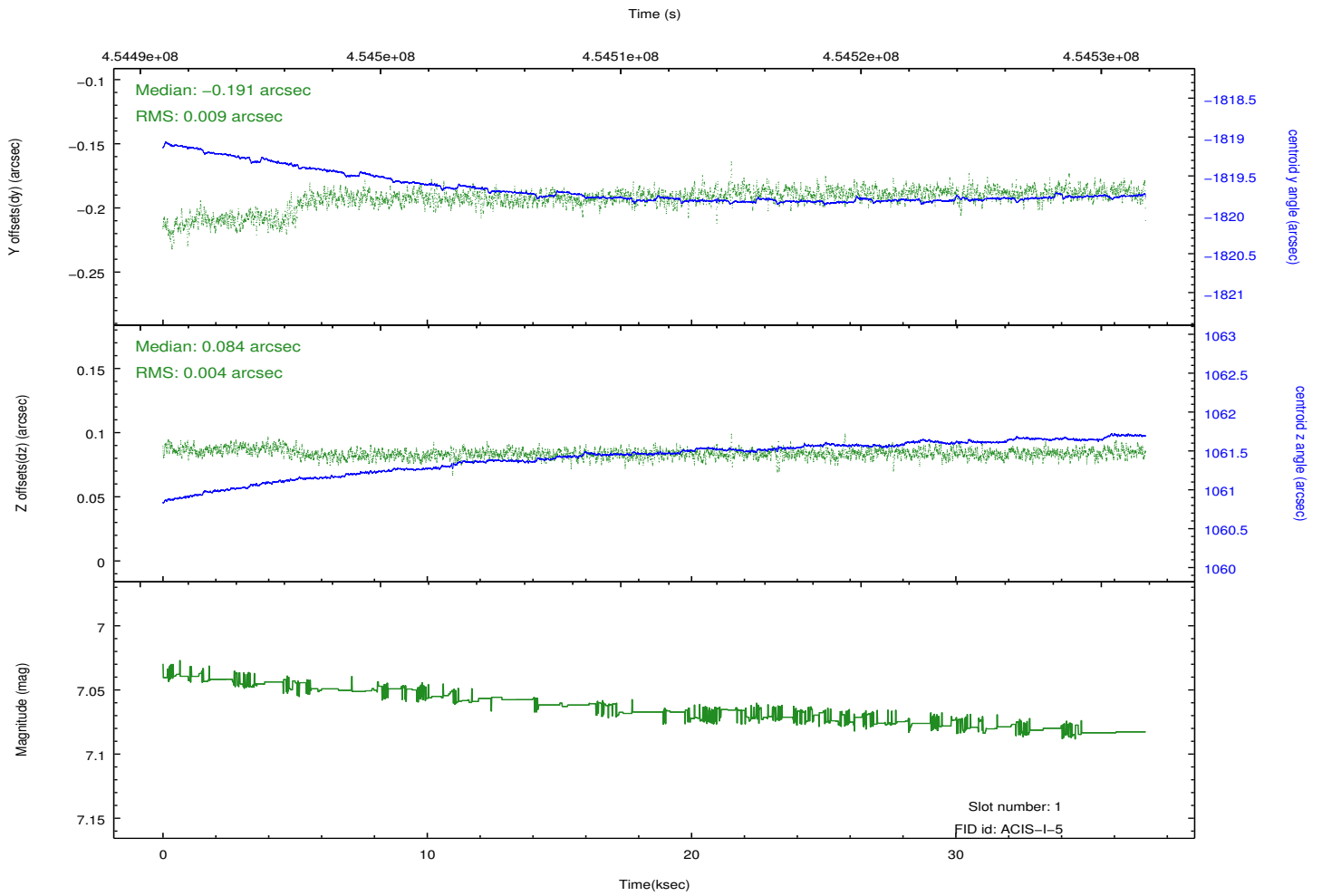
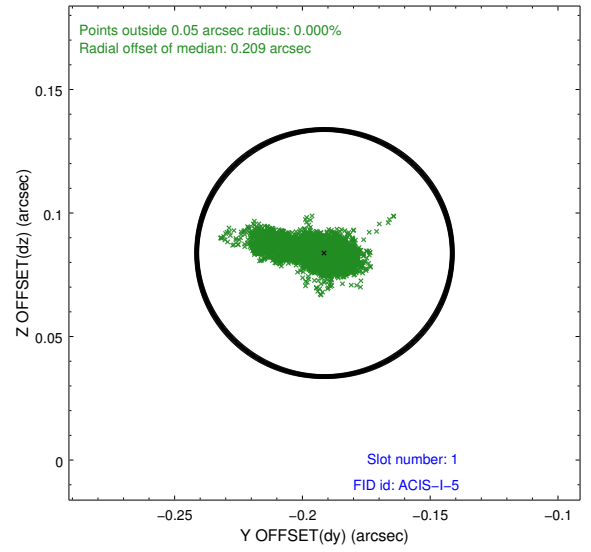
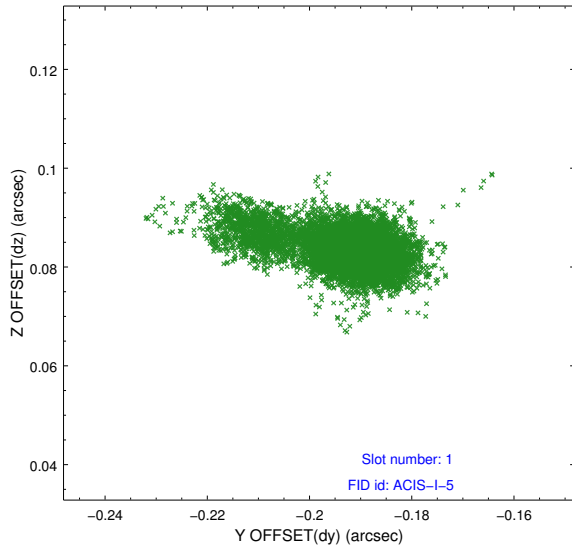


2.5 FID Slots

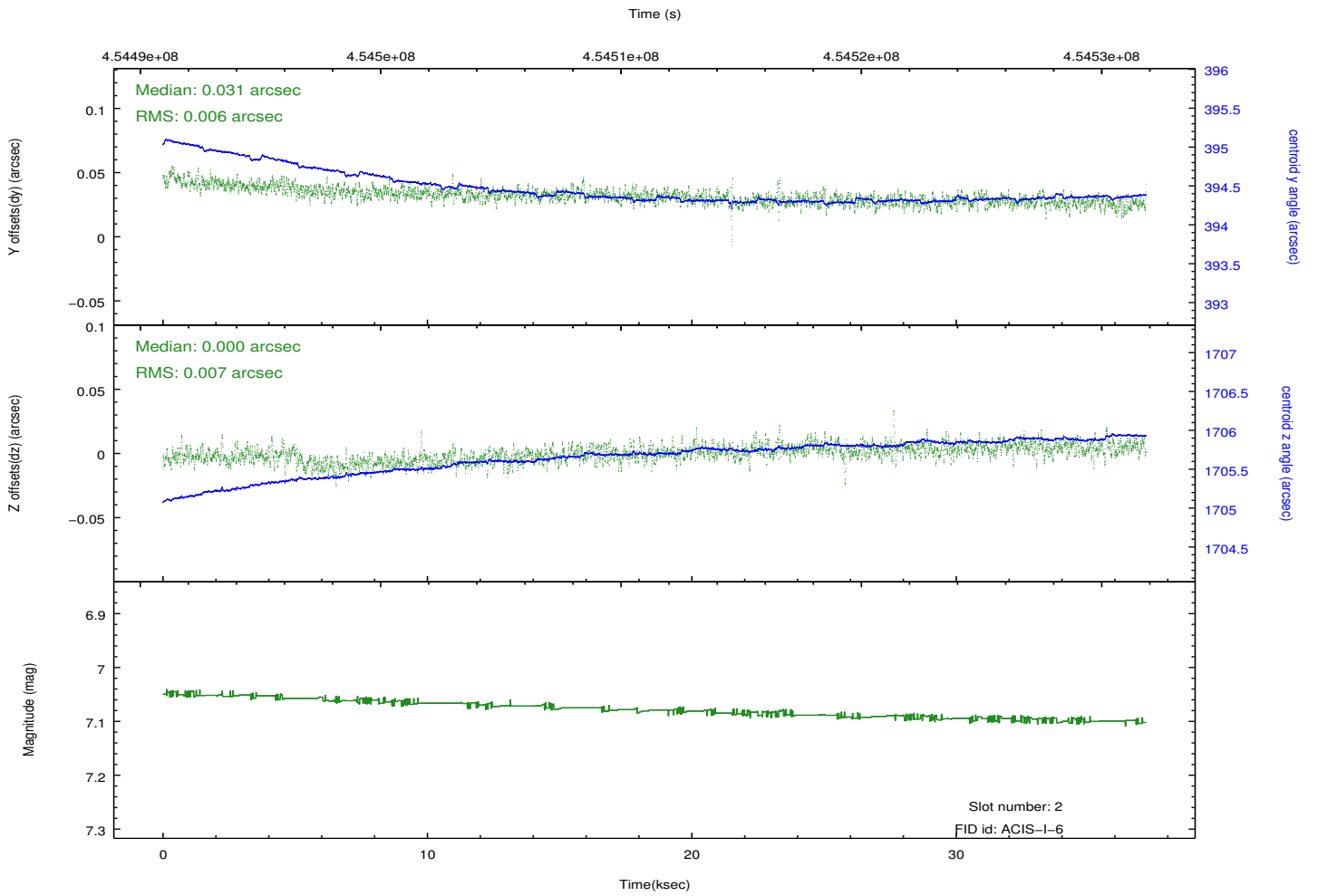
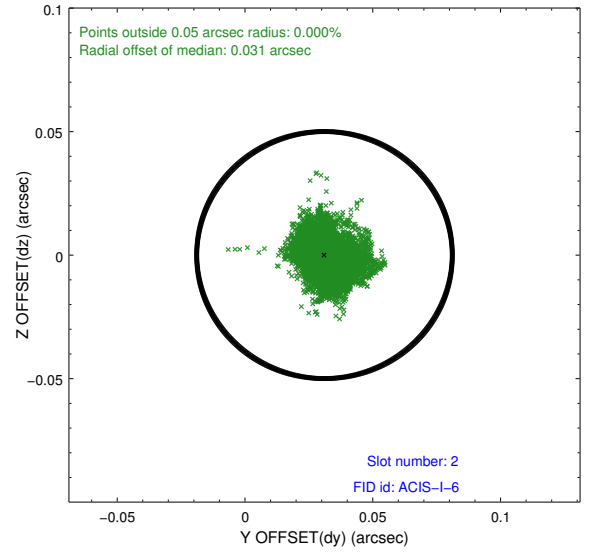
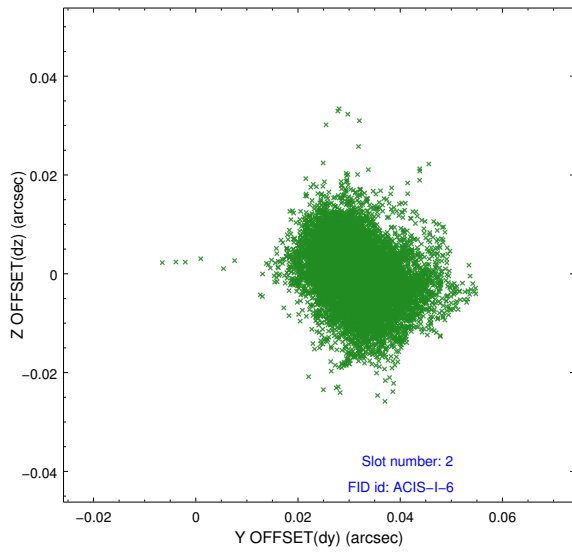
2.5.1 Slot 0



2.5.2 Slot 1



2.5.3 Slot 2



A Summary

A.1 Status

V&V Scientist	Joy Nichols
V&V Date (YYYY-MM-DD)	2012.05.29
V&V Edition	1
V&V Disposition and Status	OK
V&V Charge Time	37.082159274876

A.2 Comments