

V&V Reference Report

L2 ASCDS Version : 8.5.1.1

Observation 15340 - L2 Version 2
Chandra X-Ray Center

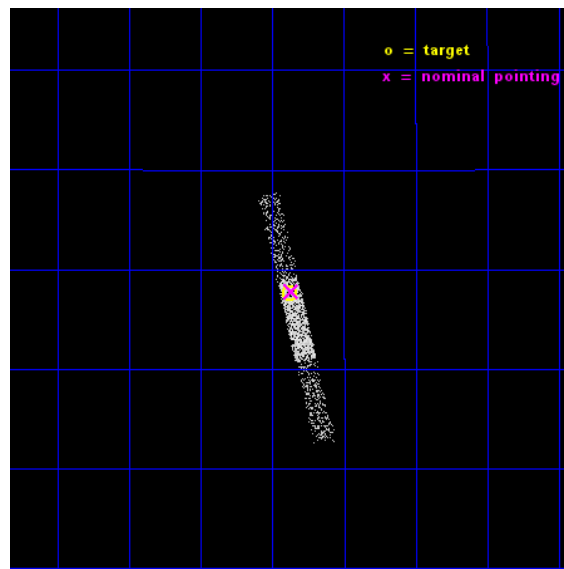
L2 Processing Date : Dec 1 2014

Contents

1	Front	2
2	OBI	3
2.1	OBI	3
2.1.1	Images	3
2.1.2	Bias	3
2.1.3	Parameters	4
2.1.4	Events	4
2.2	Compared Parameters	5
2.3	Aspect	6
2.4	Star Slots	9
2.4.1	Slot 3	9
2.4.2	Slot 4	10
2.4.3	Slot 5	11
2.4.4	Slot 6	12
2.4.5	Slot 7	13
2.5	FID Slots	14
2.5.1	Slot 0	14
2.5.2	Slot 1	15
2.5.3	Slot 2	16
A	Summary	17
A.1	Status	17
A.2	Comments	17

1 Front

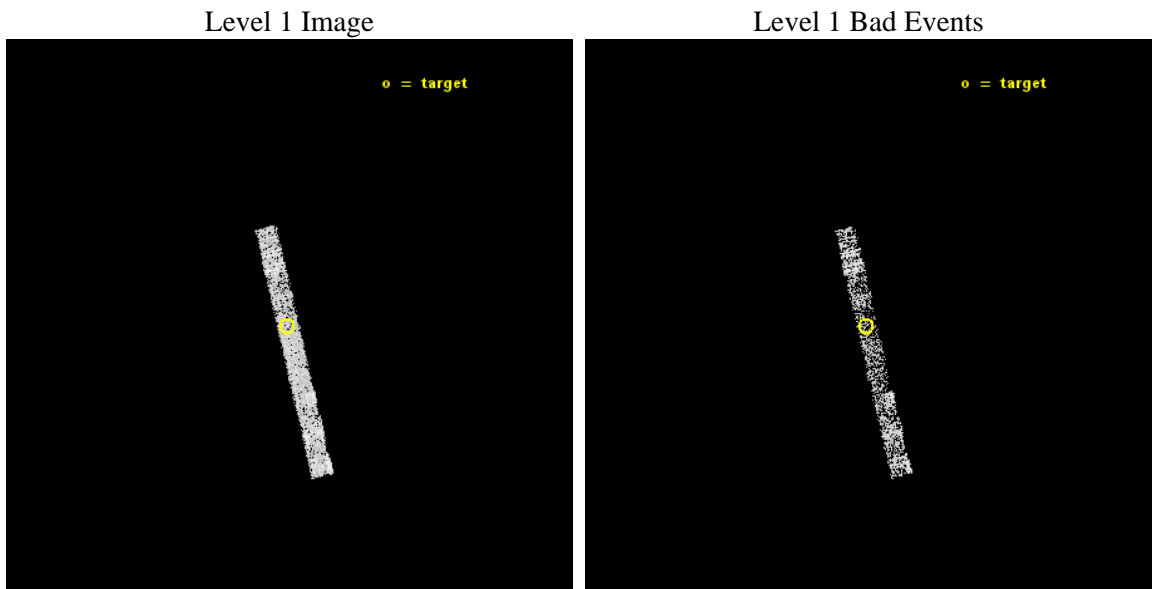
seq_num	702900	Sequence number
obs_id	15340	Observation id
title	Clarifying the Nature of Weak-Line Quasars with Chandra Spectroscopy and Snapshots	Proposal title
observer	Professor Gordon Garmire	Principal investigator
object	SDSS J1332+0347	Source name
dtcycle	0	
cycle	P	events from which exps? Prim/Second/Both
ra_targ	203.094167	Observer's specified target RA [deg]
dec_targ	3.794417	Observer's specified target Dec [deg]
ra_nom	203.09203269695	Nominal RA [deg]
dec_nom	3.7966845850767	Nominal Dec [deg]
roll_nom	76.512901924268	Nominal Roll [deg]
revision	2	Processing version of data
ontime	2093.3999445438	Sum of GTIs [s]
livetime	2002.1040020503	Livetime [s]
ontime6	2093.3999445438	Sum of GTIs [s]
ontime7	2093.3999445438	Sum of GTIs [s]
ontime8	2093.3999445438	Sum of GTIs [s]
l2events	2342	Number of level 2 events



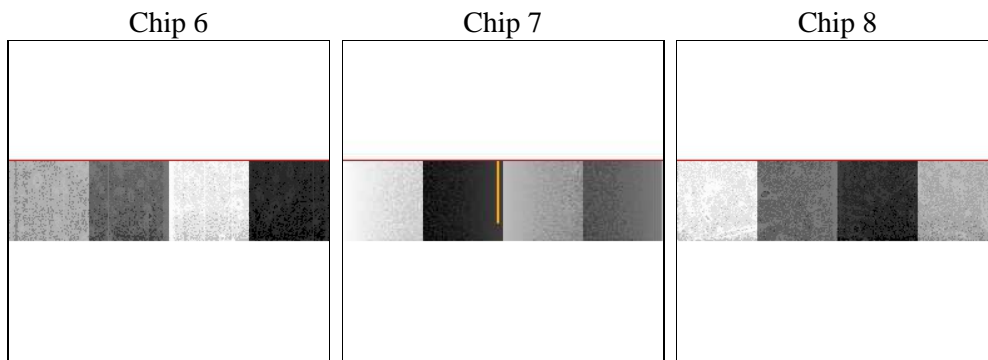
2 OBI

2.1 OBI

2.1.1 Images



2.1.2 Bias



2.1.3 Parameters

obi_num	0	Obi number	sched_exp_time	2000.000000	[s] Scheduled observation exposure time
ascdsver	10.3	Processing system revision	ontime	2093.3999445438	Sum of GTIs [s]
caldbver	4.6.4	 	ontime6	2093.3999445438	Sum of GTIs [s]
date	2014-12-01T16:22:32	Date and time of file creation	ontime7	2093.3999445438	Sum of GTIs [s]
revision	2	Processing version of data	ontime8	2093.3999445438	Sum of GTIs [s]
			l1events	11097	Number of level 1 events

2.1.4 Events

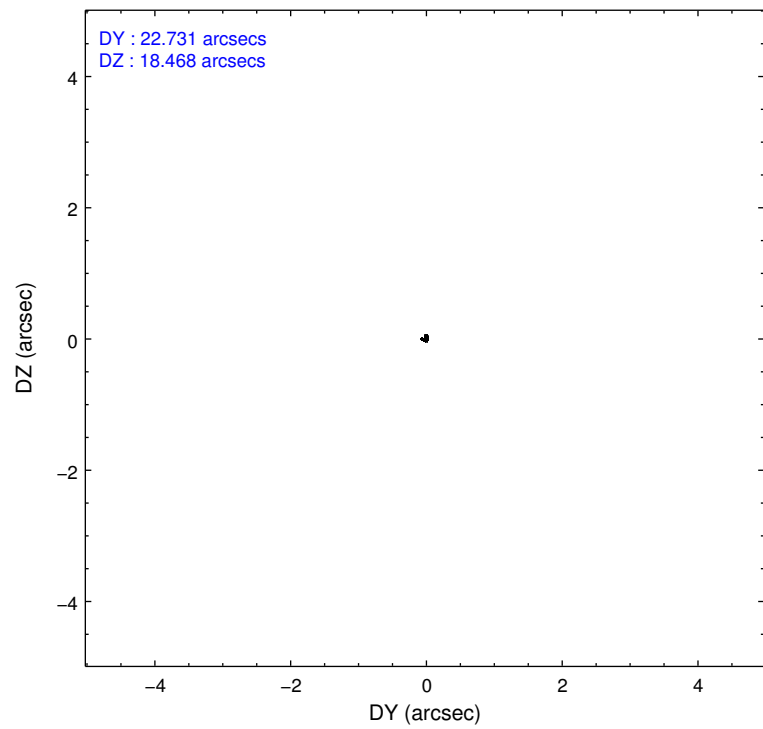
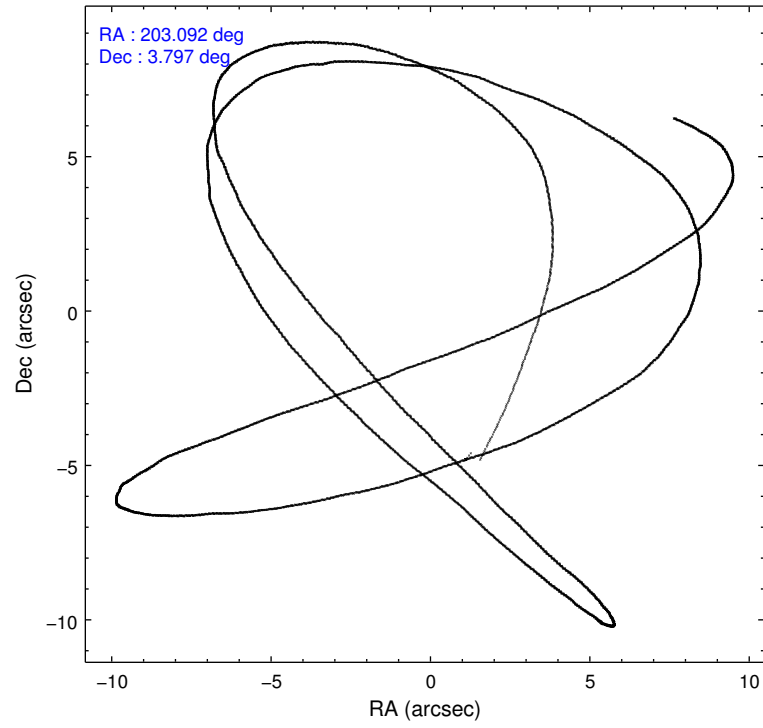
	ccd 6	ccd 7	ccd 8
level 1 events	3340	3449	4308
rejected events	2954	1715	3149
rejected %	88%	49%	73%

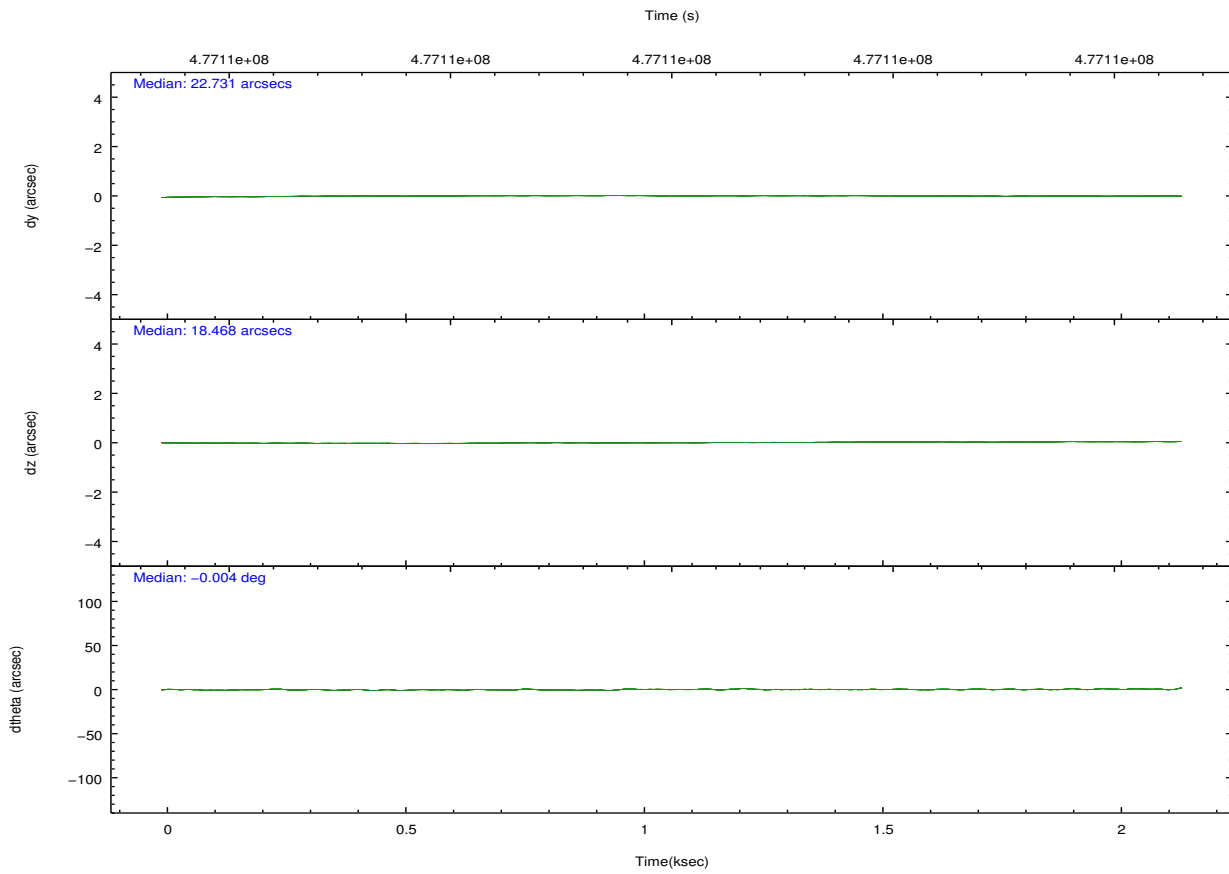
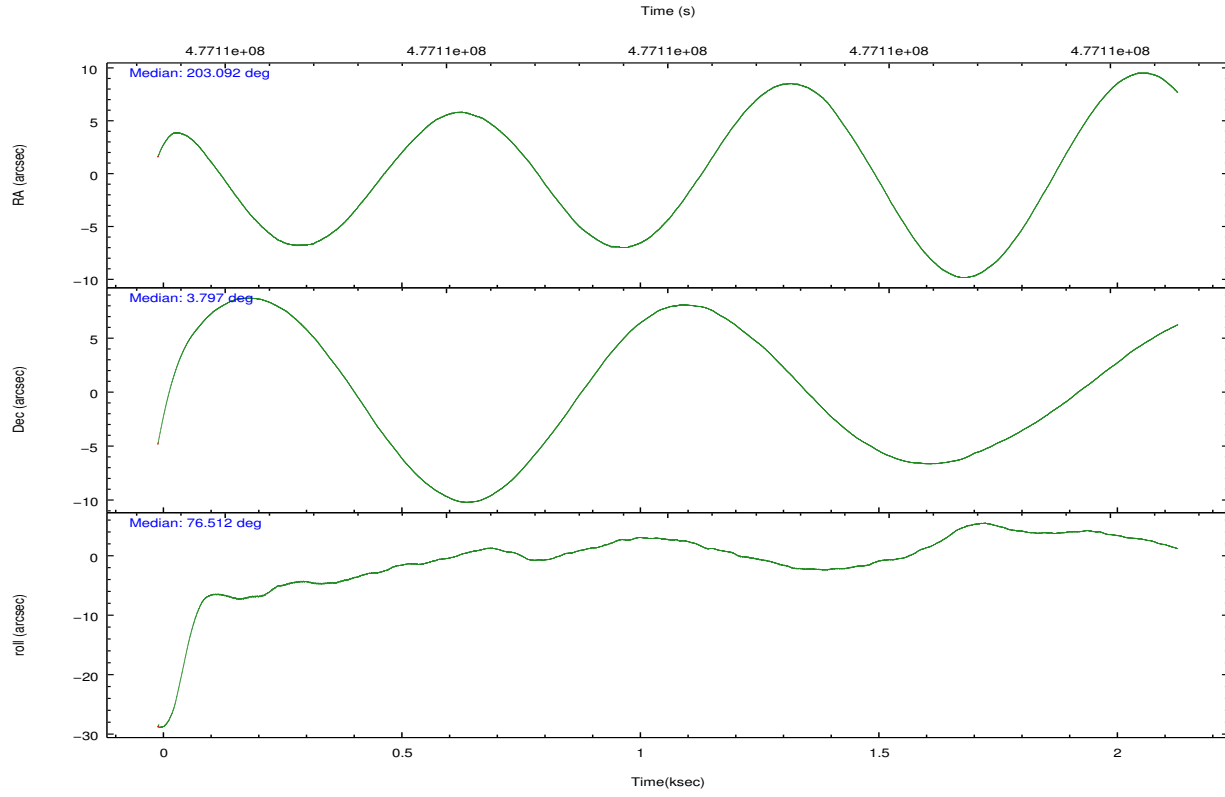
	ccd 6	ccd 7	ccd 8
grade 0 events	111	204	310
	3%	5%	7%
grade 1 events	2	5	2
	0%	0%	0%
grade 2 events	72	384	277
	2%	11%	6%
grade 3 events	61	166	156
	1%	4%	3%
grade 4 events	71	184	145
	2%	5%	3%
grade 5 events	113	346	178
	3%	10%	4%
grade 6 events	71	796	273
	2%	23%	6%
grade 7 events	2839	1364	2967
	85%	39%	68%

2.2 Compared Parameters

Parameter	Planned	Actual	Parameter	Planned	Actual
Instrument	ACIS	ACIS	Obspar format version number	7	7
Detector	ACIS-678	ACIS-678	Obspar file type	PREDICTED	ACTUAL
Grating	NONE	NONE	Obspar update status	NONE	UPDATED
Data mode	VFAINT	VFAINT	Number of optional ACIS chips dropped	0	0
Observation mode	POINTING	POINTING	On-chip summing requested	N	N
[deg] Pointing RA	203.100206	203.0920326969476	Subarray requested	CUSTOM	1/4
[deg] Pointing Dec	3.770481	3.796684585076712	Subarray start row	385	385
[deg] Pointing Roll	76.355854	76.51290192426782	Subarray row count	256	256
[mm] SIM focus pos	-0.684267	-0.6828225247311905	Alternating exposures requested	N	N
[mm] SIM defocus	0	0.001444936568705701	[s] Primary exposure time	0.000000	0.9
[mm] SIM translation stage pos	-190.132523	-190.1400660498719			
[mm] SIM translation stage offset	0	0.00754346686406393			
[s] Observation start time (MET)	477107070.184000	477105898.667			
Observation start date	2013-02-13T01:43:23	2013-02-13T01:24:58			
[s] Observation end time (MET)	477109070.184000	477110161.12973			
Observation end date	2013-02-13T02:16:43	2013-02-13T02:36:01			
Read mode	TIMED	TIMED			

2.3 Aspect



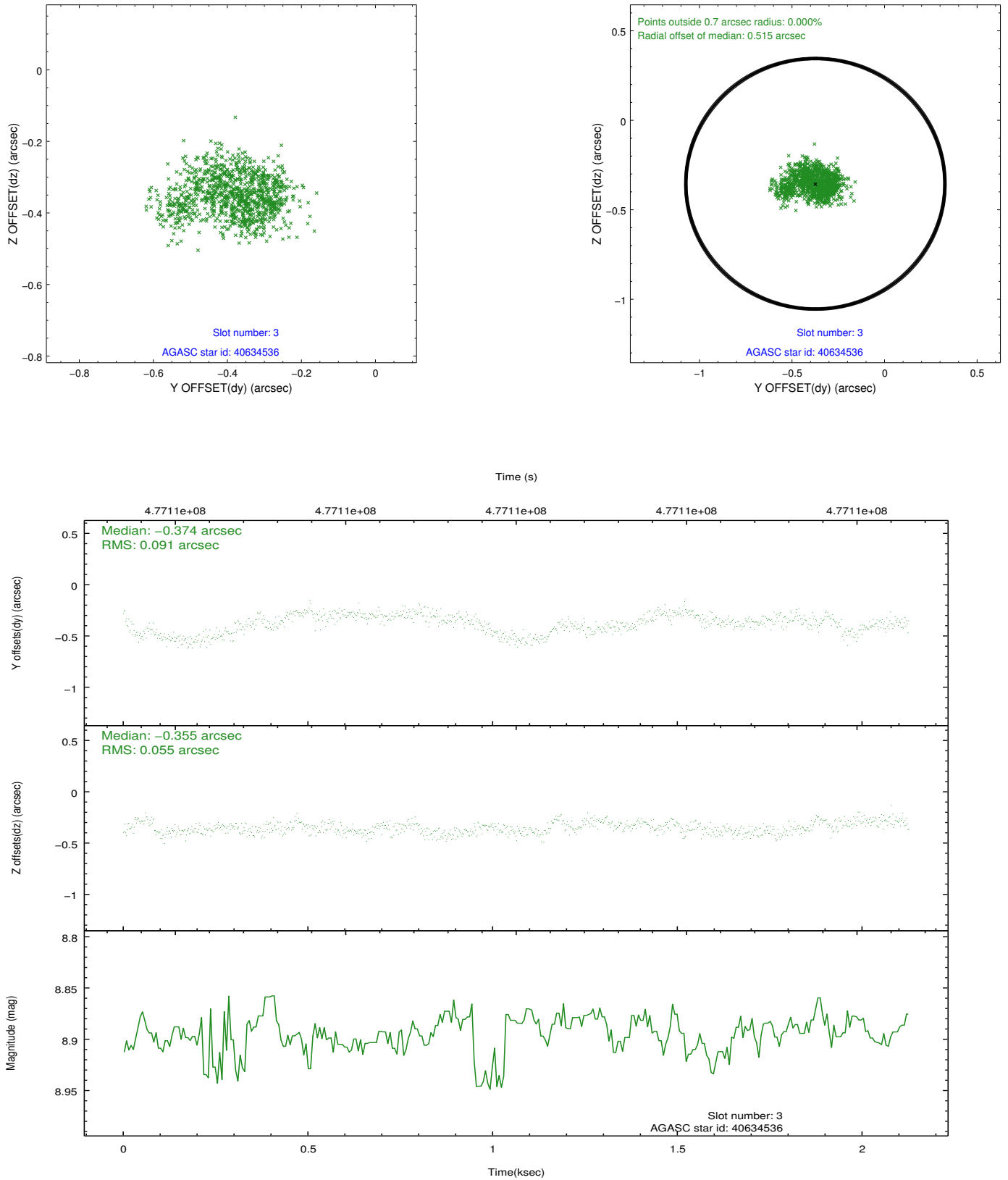


Slot Statistics

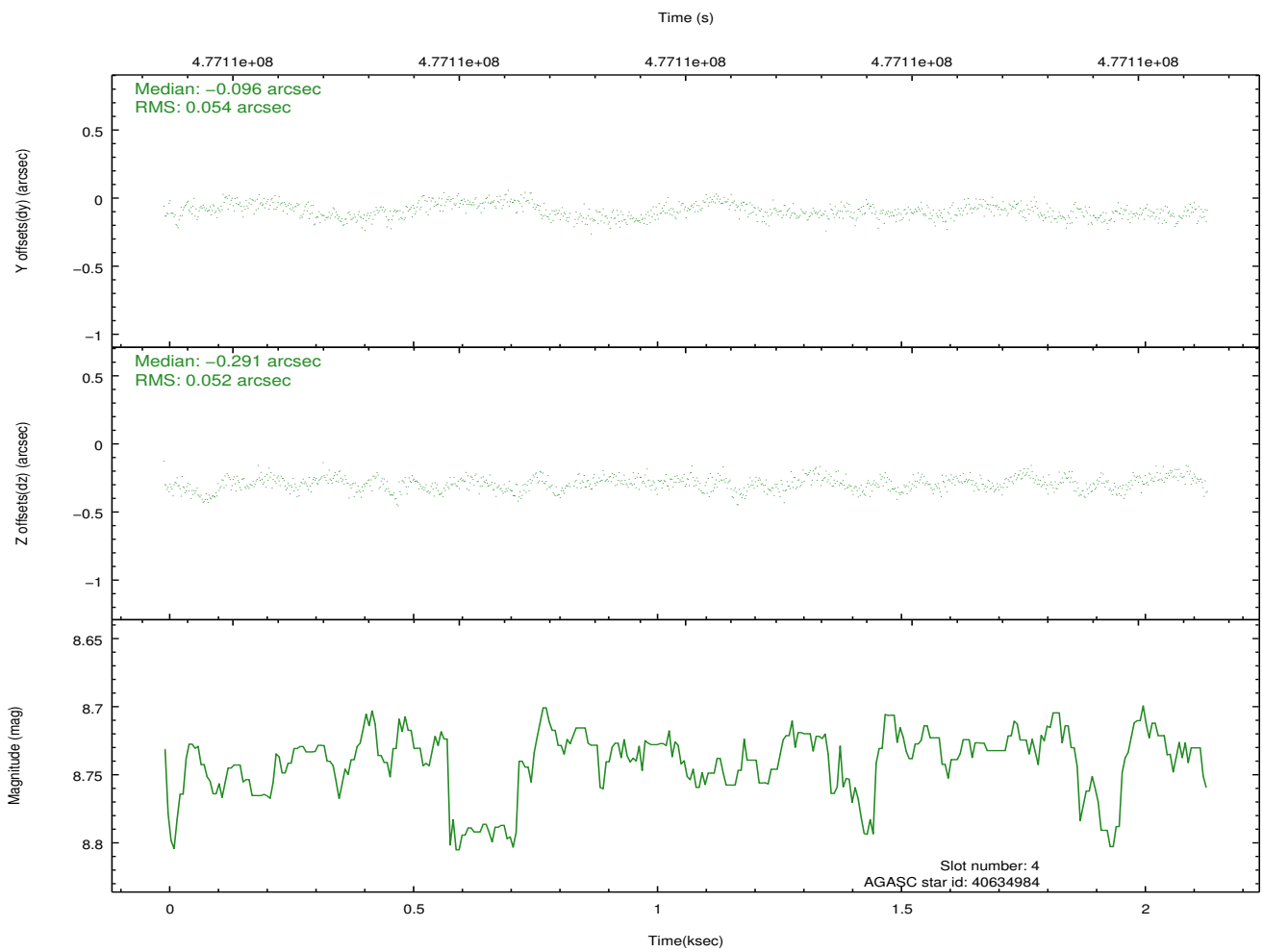
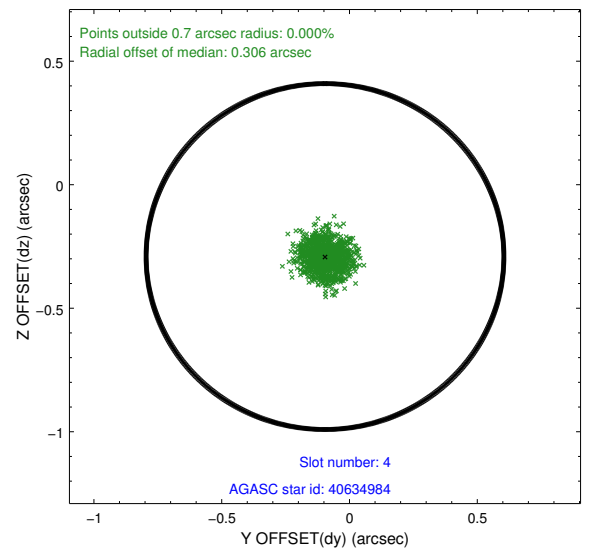
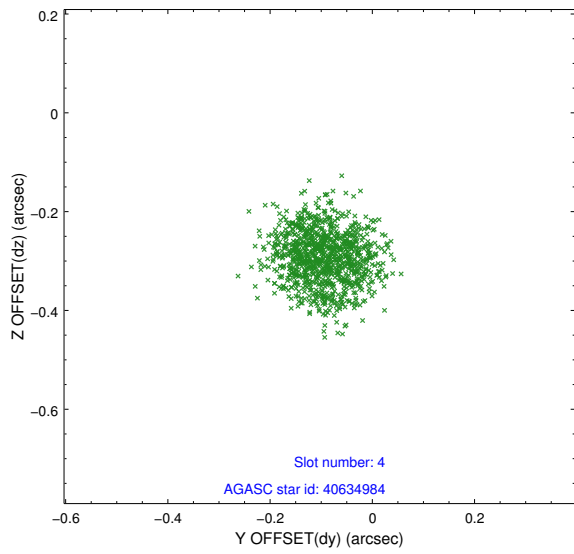
slot	status	used	id	mag	n_pts	med_dy	med_dz	dr1	dr2	ra	dec	mean_y	mean_z
0	FID		ACIS-S-2	6.98	522	-0.108	-0.088	0.006	0.012	0.000000	0.000000	-776.03	-1740.03
1	FID		ACIS-S-4	7.06	522	0.312	0.075	0.005	0.009	0.000000	0.000000	2136.27	165.43
2	FID		ACIS-S-5	7.09	522	-0.236	0.020	0.006	0.012	0.000000	0.000000	-1825.09	162.54
3	GUIDE	used	40634536	8.89	1037	-0.374	-0.355	0.112	0.185	202.763854	4.473197	2172.72	1768.90
4	GUIDE	used	40634984	8.74	1041	-0.096	-0.291	0.082	0.123	202.976878	4.213479	1447.37	809.18
5	GUIDE	used	40638432	8.14	1044	-0.001	0.135	0.095	0.141	203.457359	3.930710	864.97	-1109.35
6	GUIDE	used	40641296	8.10	1044	0.449	0.350	0.106	0.238	203.457288	3.131923	-1929.79	-1790.38
7	GUIDE	used	40633496	9.25	1034	0.042	0.173	0.139	0.235	203.494004	3.920972	858.82	-1247.99

2.4 Star Slots

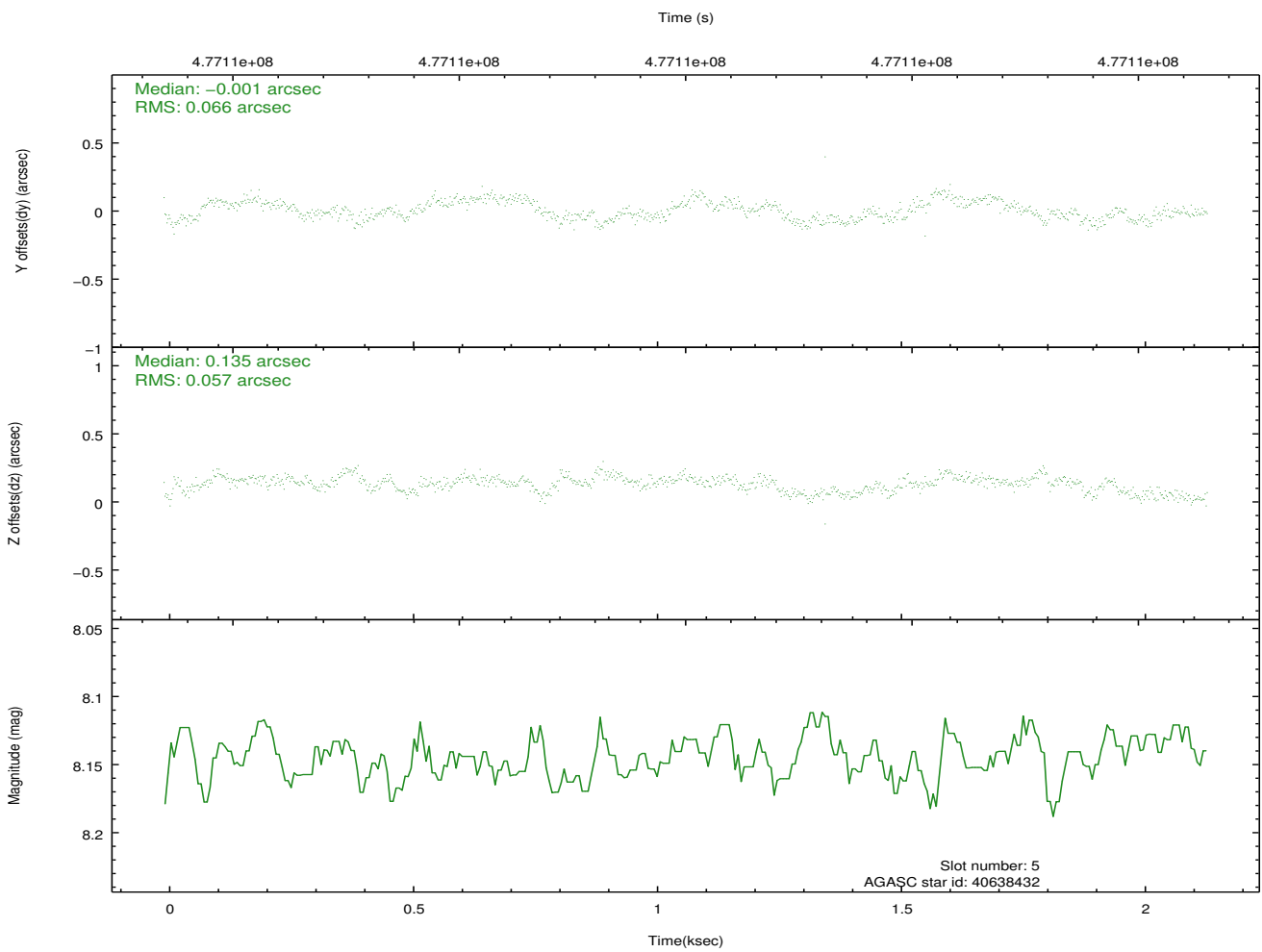
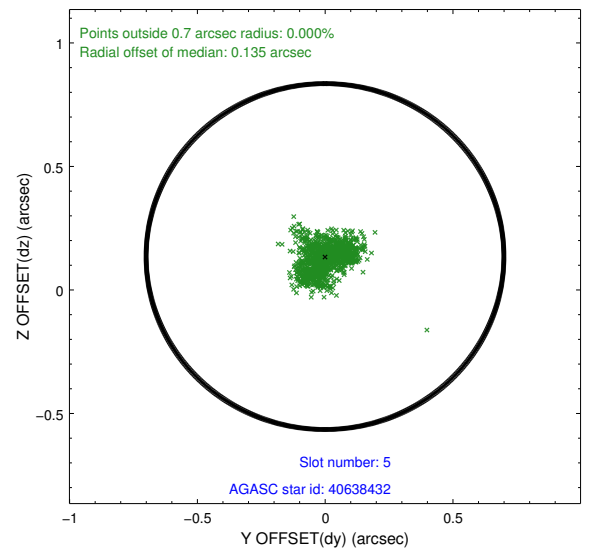
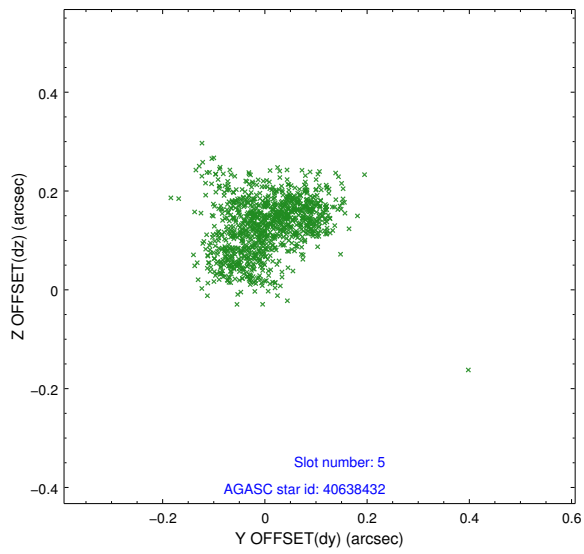
2.4.1 Slot 3



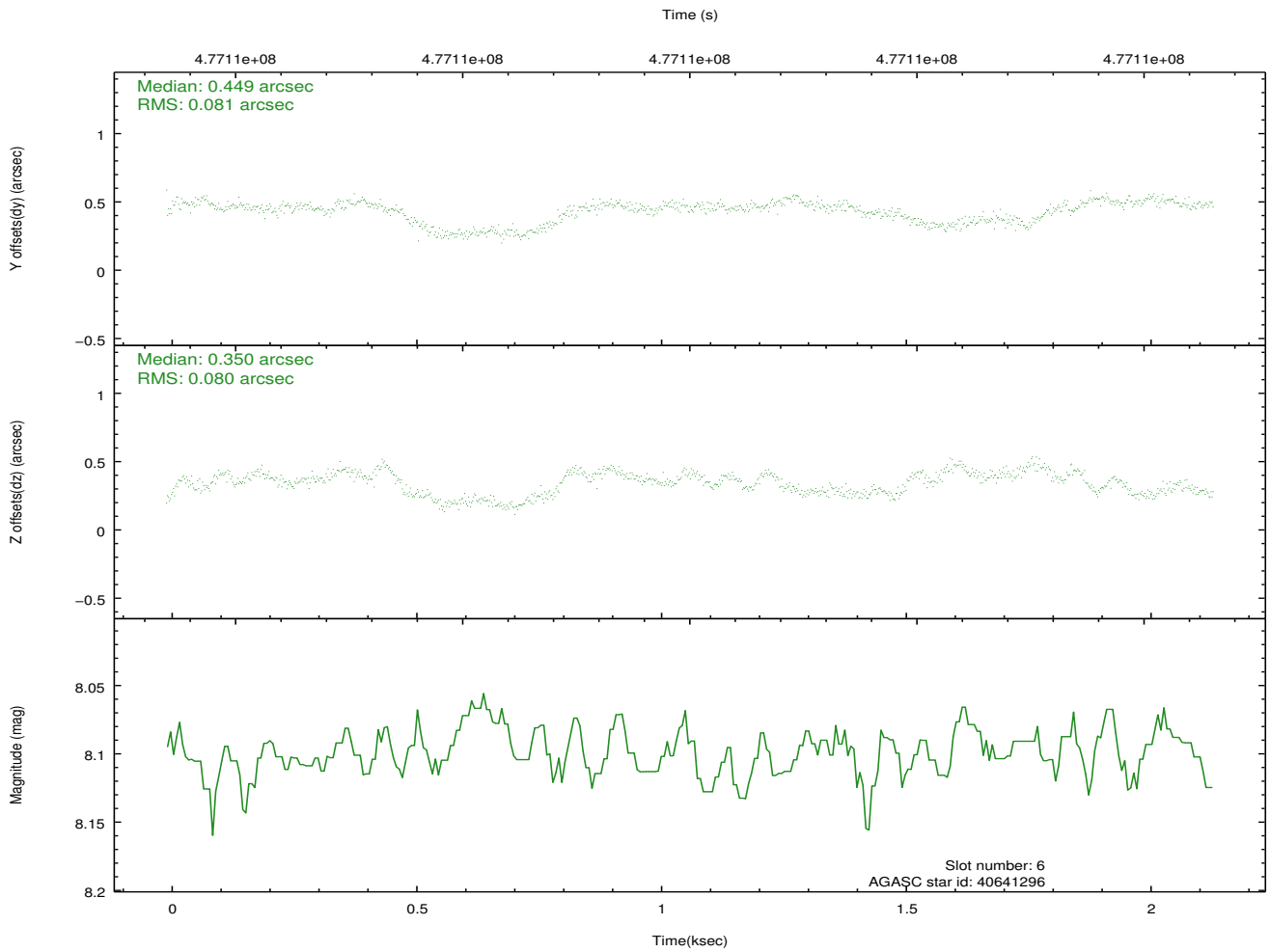
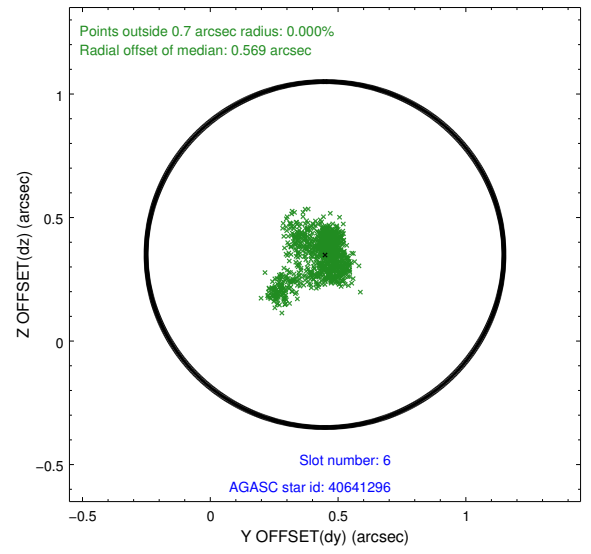
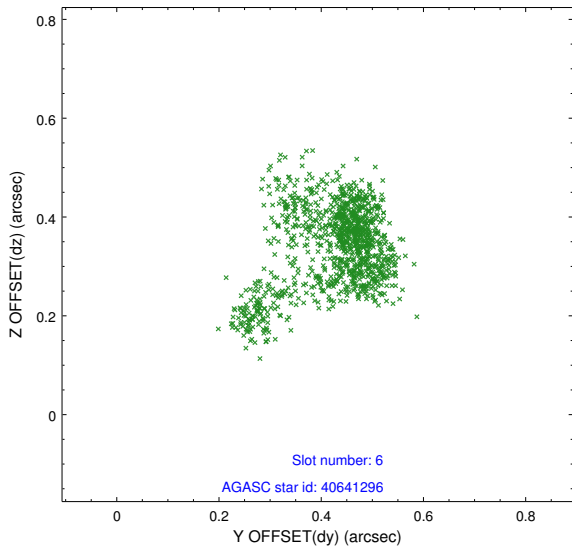
2.4.2 Slot 4



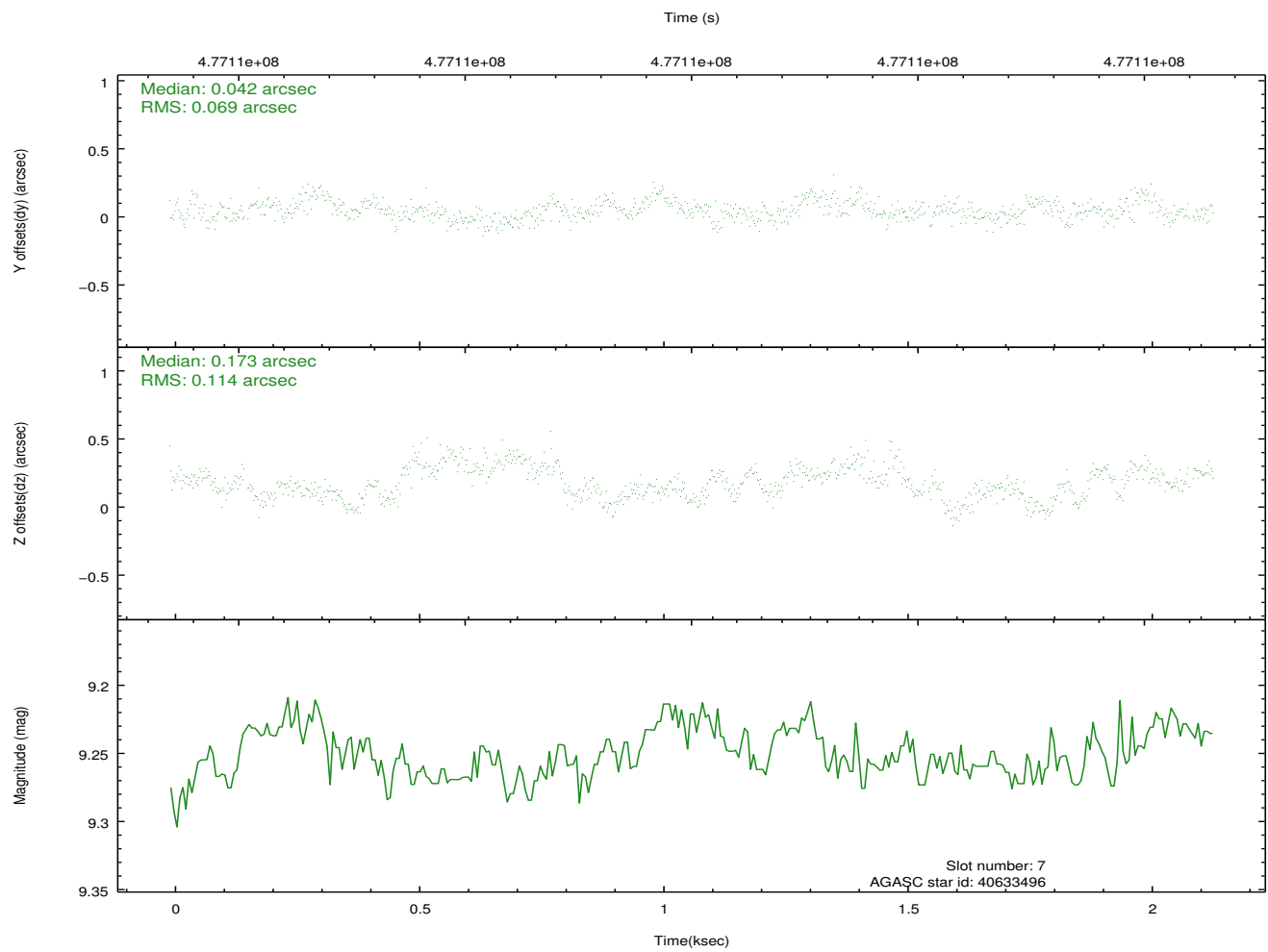
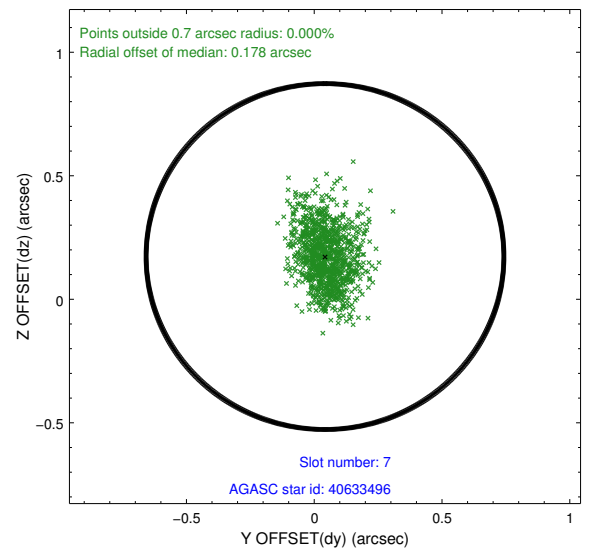
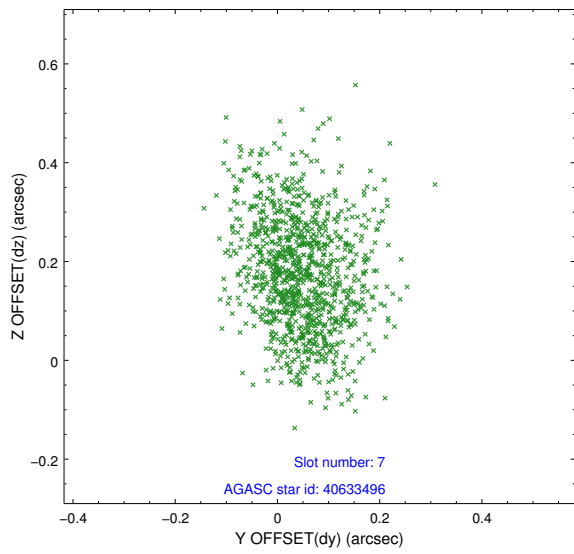
2.4.3 Slot 5



2.4.4 Slot 6

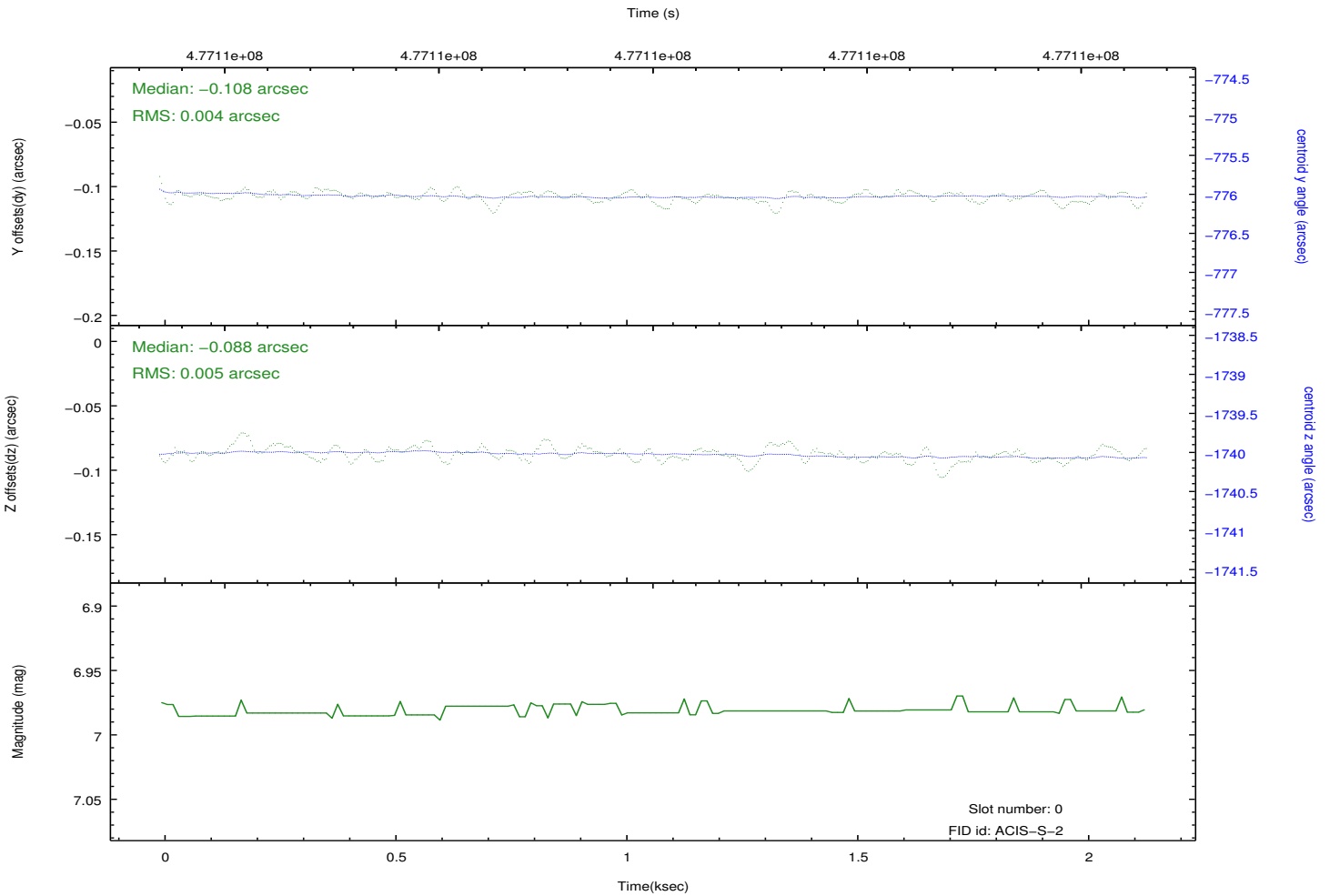
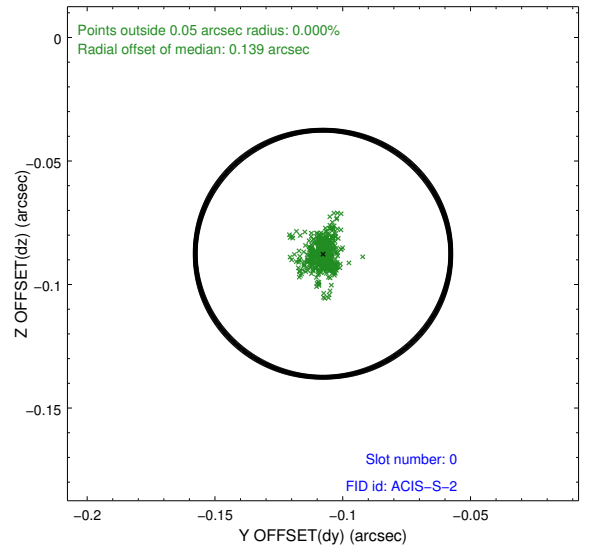
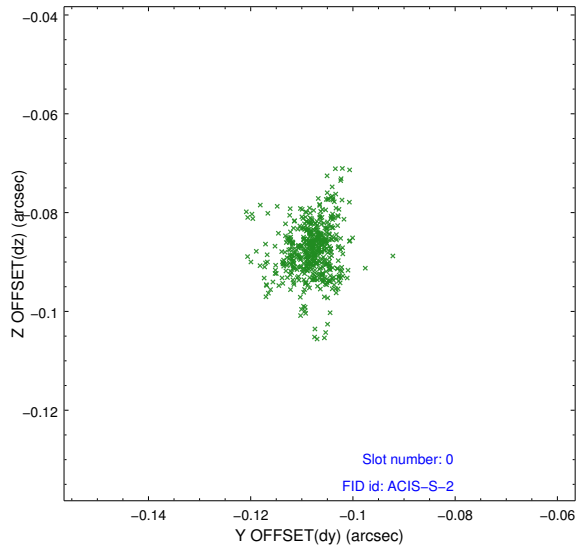


2.4.5 Slot 7

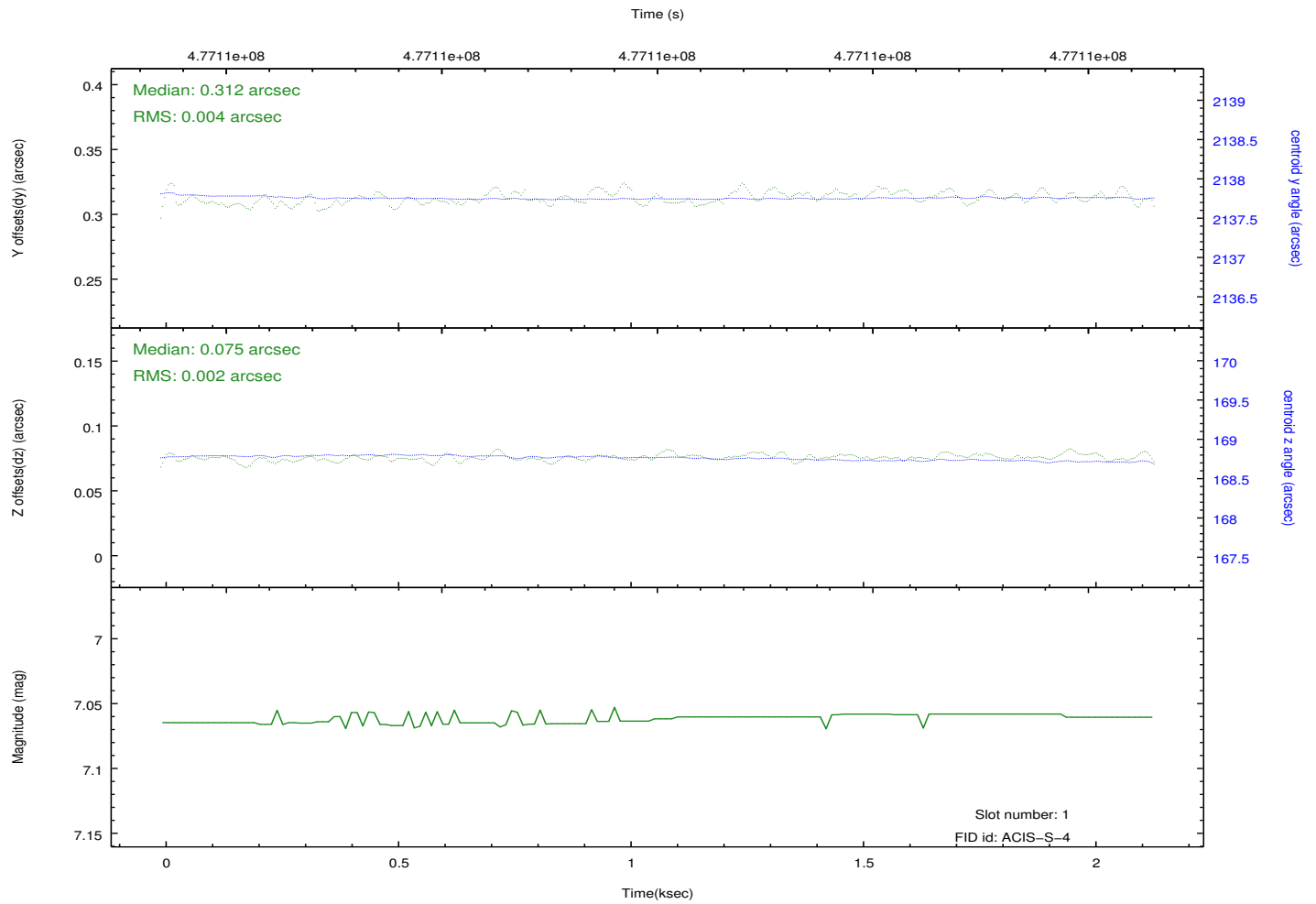
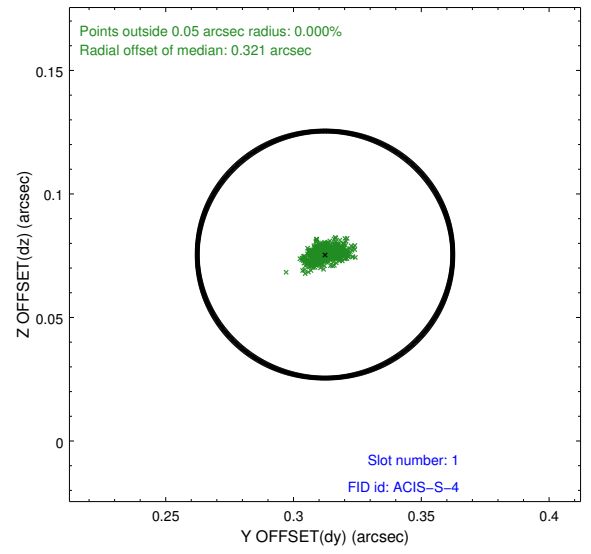
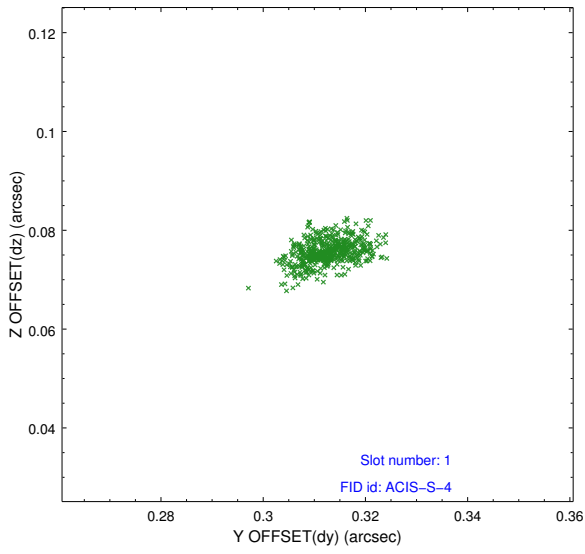


2.5 FID Slots

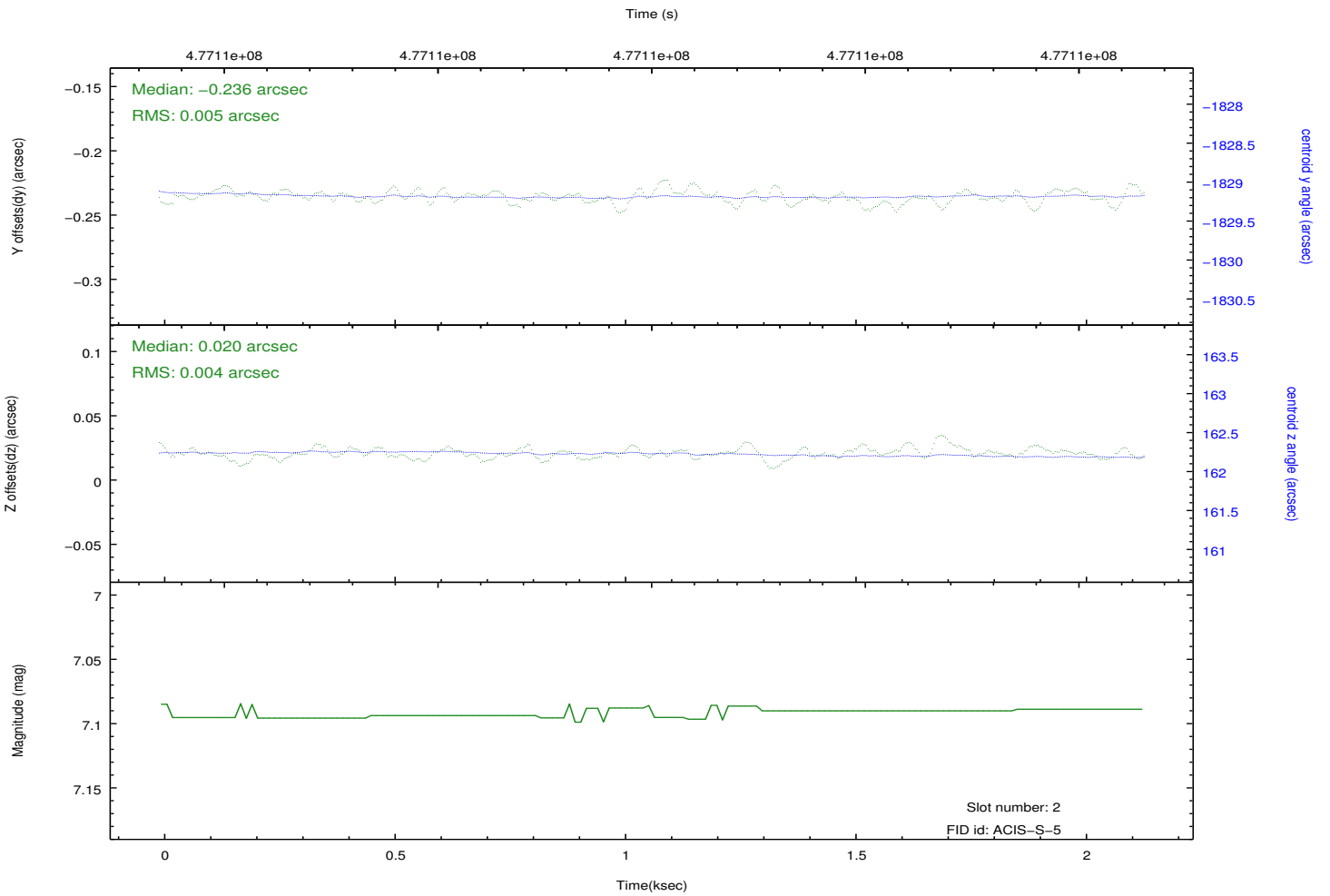
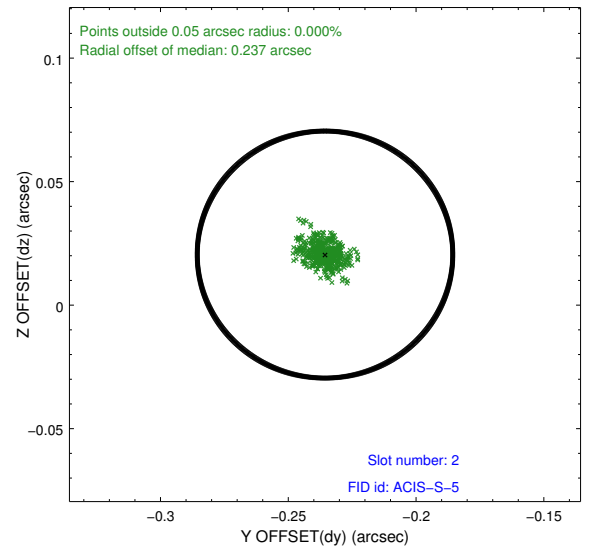
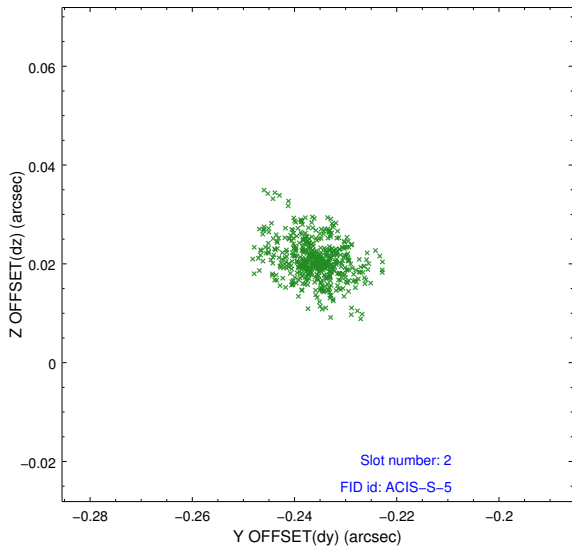
2.5.1 Slot 0



2.5.2 Slot 1



2.5.3 Slot 2



A Summary

A.1 Status

V&V Scientist	Beth Sundheim
V&V Date (YYYY-MM-DD)	2014.12.09
V&V Edition	1
V&V Disposition and Status	OK
V&V Charge Time	2.0933999445438

A.2 Comments

These data have been reprocessed with new aspect alignment calibration files that correct small mean offsets (up to 0.4 arcsecs) and improve overall astrometric accuracy. The new calibration was determined using data from the time period being reprocessed and was performed using cross-correlation of X-ray sources with radio and optical counterparts.