

# V&V Reference Report

## L2 ASCDS Version : 10.3.3

Observation 16030 - L2 Version 1  
Chandra X-Ray Center

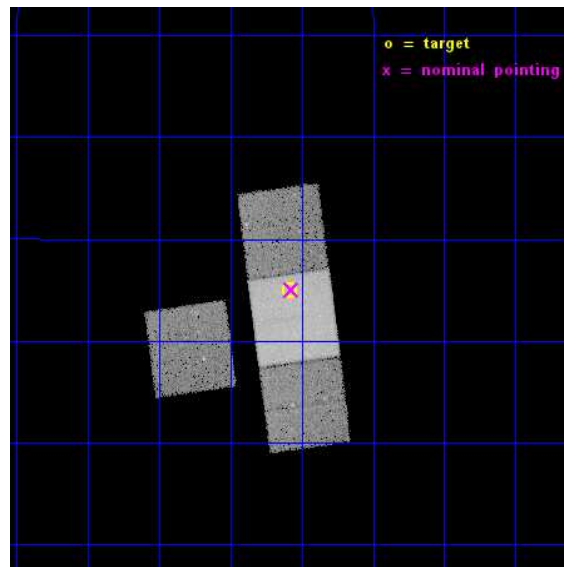
L2 Processing Date : Feb 26 2015

## Contents

<b>1</b>	<b>Front</b>	<b>2</b>
<b>2</b>	<b>OBI</b>	<b>3</b>
2.1	OBI . . . . .	3
2.1.1	Images . . . . .	3
2.1.2	Bias . . . . .	3
2.1.3	Parameters . . . . .	4
2.1.4	Events . . . . .	4
2.2	Compared Parameters . . . . .	5
2.3	Aspect . . . . .	6
2.4	Star Slots . . . . .	9
2.4.1	Slot 3 . . . . .	9
2.4.2	Slot 4 . . . . .	10
2.4.3	Slot 5 . . . . .	11
2.4.4	Slot 6 . . . . .	12
2.4.5	Slot 7 . . . . .	13
2.5	FID Slots . . . . .	14
2.5.1	Slot 0 . . . . .	14
2.5.2	Slot 1 . . . . .	15
2.5.3	Slot 2 . . . . .	16
<b>A</b>	<b>Summary</b>	<b>17</b>
A.1	Status . . . . .	17
A.2	Comments . . . . .	17

# 1 Front

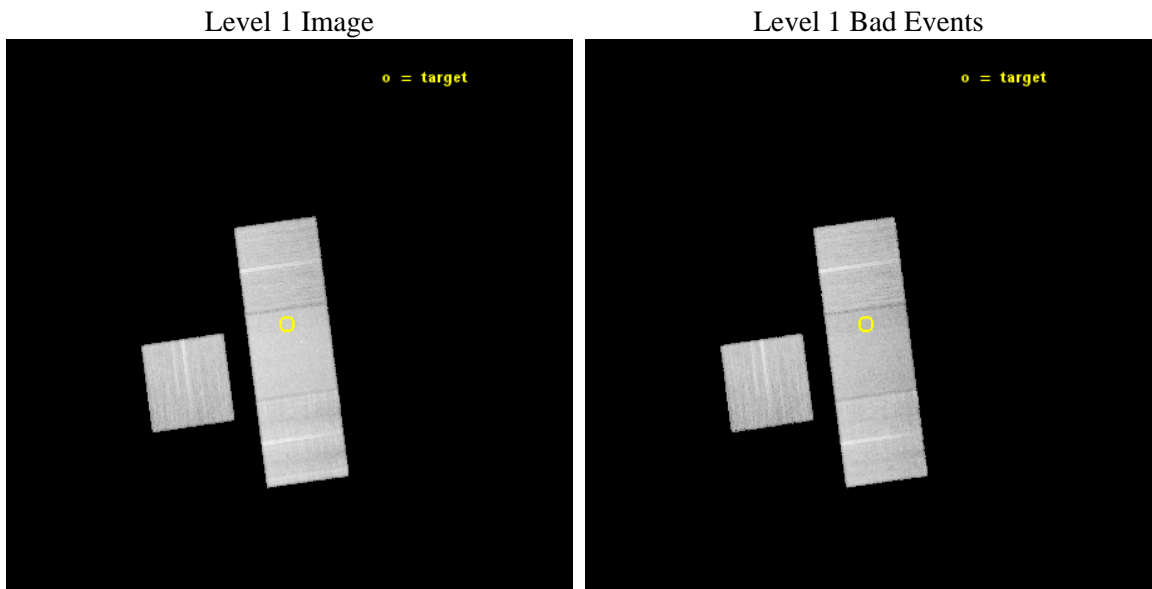
seq_num	601118	Sequence number
obs_id	16030	Observation id
title	TESTING THE UNIVERSALITY OF THE STELLAR IMF USING CHANDRA	Proposal
observer	Bret Lehmer	Principal investigator
object	NGC 4339	Source name
dtcycle	0	&#160
cycle	P	events from which exps? Prim/Second/Both
ra_targ	185.895417	Observer's specified target RA [deg]
dec_targ	6.081722	Observer's specified target Dec [deg]
ra_nom	185.89305792161	Nominal RA [deg]
dec_nom	6.0837626053163	Nominal Dec [deg]
roll_nom	82.245563329888	Nominal Roll [deg]
revision	1	Processing version of data
ontime	34071.85395205	Sum of GTIs [s]
livetime	33626.680096833	Livetime [s]
ontime3	34068.630821943	Sum of GTIs [s]
ontime6	34071.812912107	Sum of GTIs [s]
ontime7	34071.85395205	Sum of GTIs [s]
ontime8	34071.7308321	Sum of GTIs [s]
l2events	149090	Number of level 2 events



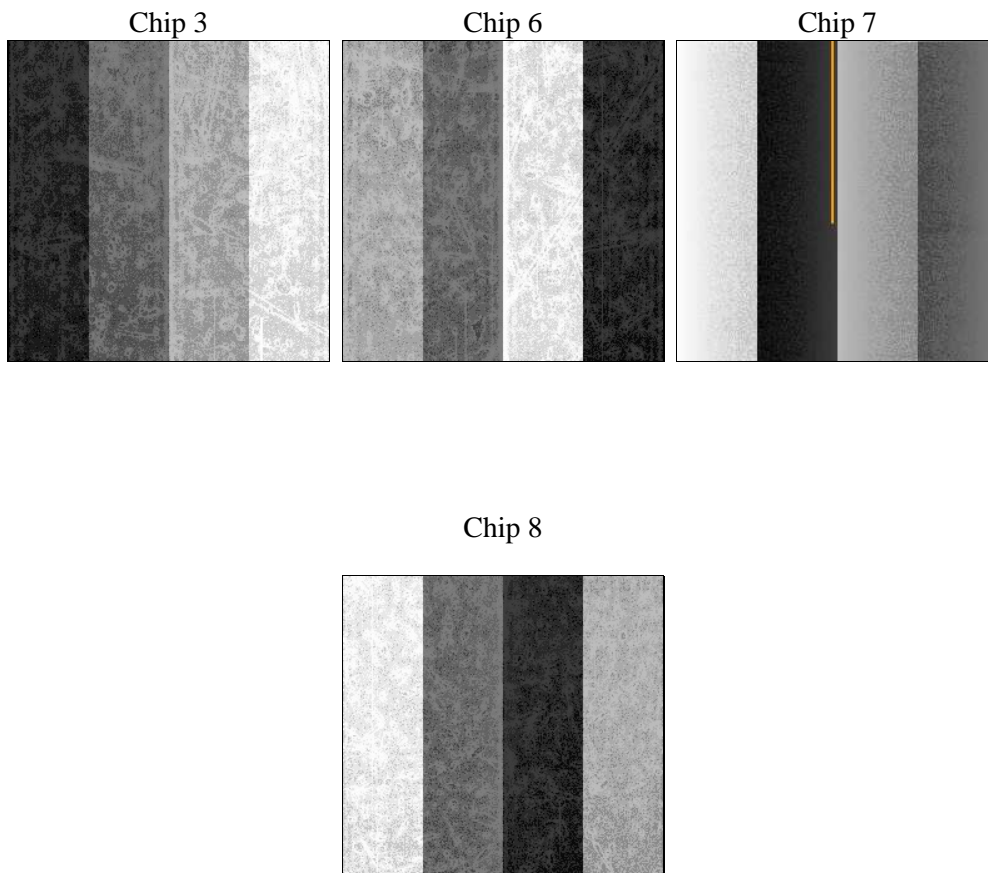
## 2 OBI

### 2.1 OBI

#### 2.1.1 Images



#### 2.1.2 Bias



### 2.1.3 Parameters

obi_num	0	Obi number	sched_exp_time	34000.000000	[s] Scheduled observation exposure time
ascdsver	10.3.3	Processing system revision	ontime	34071.85395205	Sum of GTIs [s]
caldbver	4.6.7	&#160	ontime3	34068.630821943	Sum of GTIs [s]
date	2015-02-27T03:18:41	Date and time of file creation	ontime6	34071.812912107	Sum of GTIs [s]
revision	1	Processing version of data	ontime7	34071.85395205	Sum of GTIs [s]
			ontime8	34071.7308321	Sum of GTIs [s]
			l1events	775355	Number of level 1 events

### 2.1.4 Events

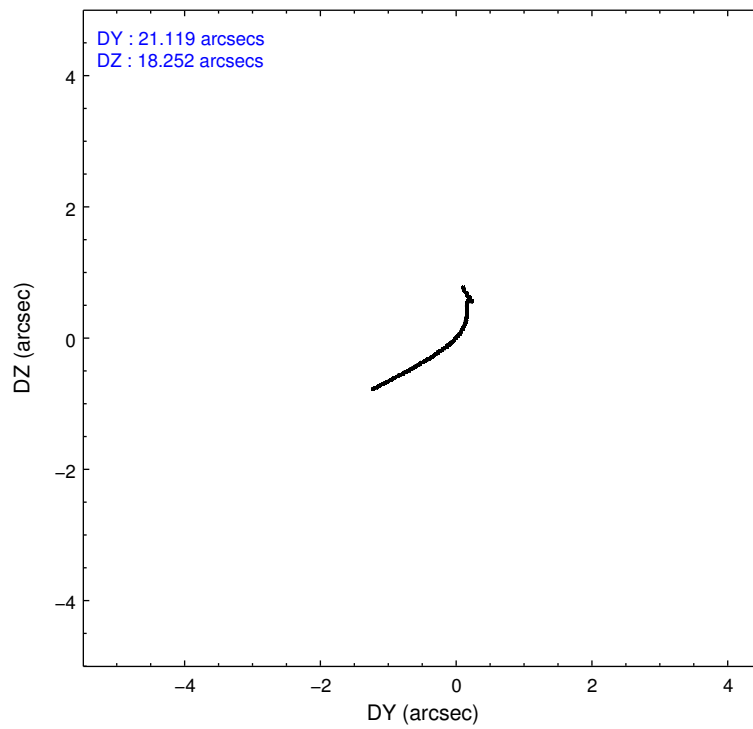
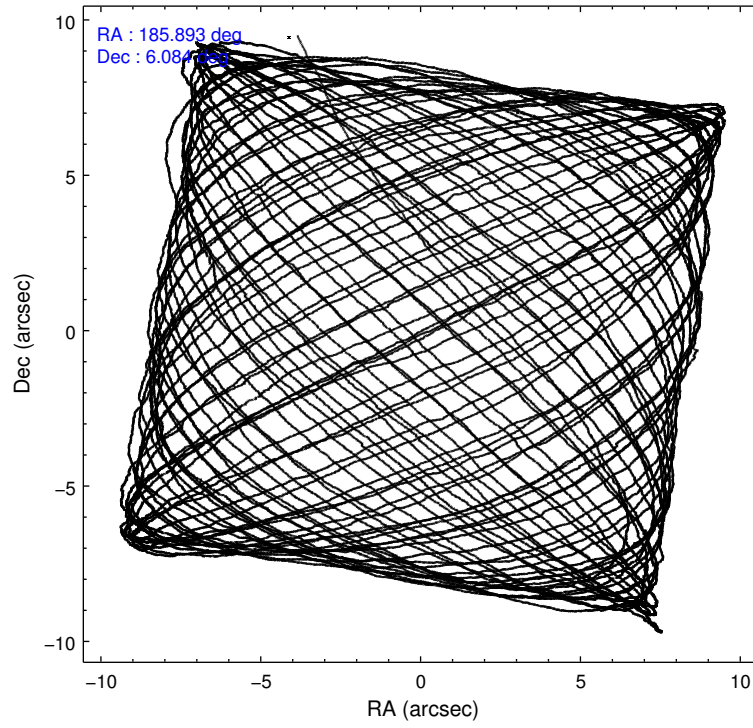
	ccd 3	ccd 6	ccd 7	ccd 8
level 1 events	158687	170126	225238	221304
rejected events	140716	150219	127297	162935
rejected %	88%	88%	56%	73%

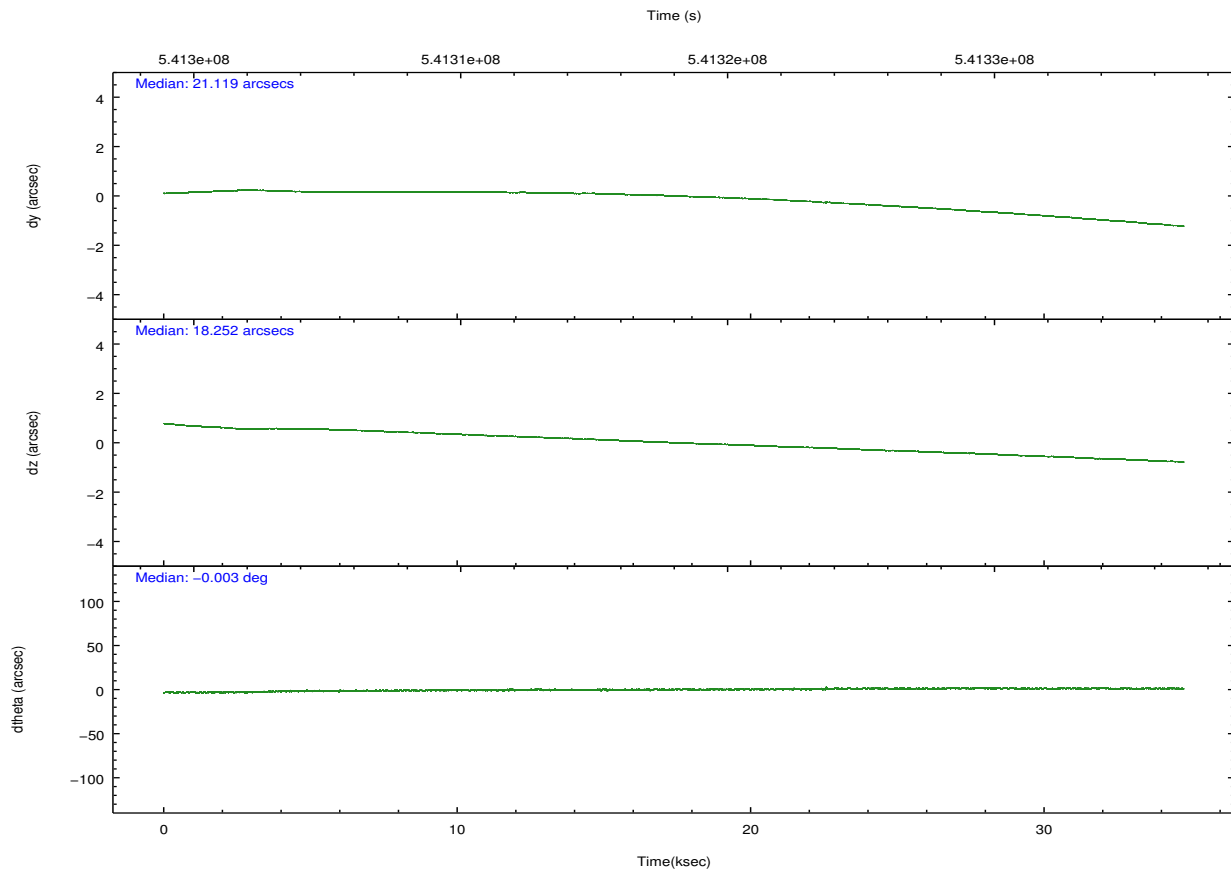
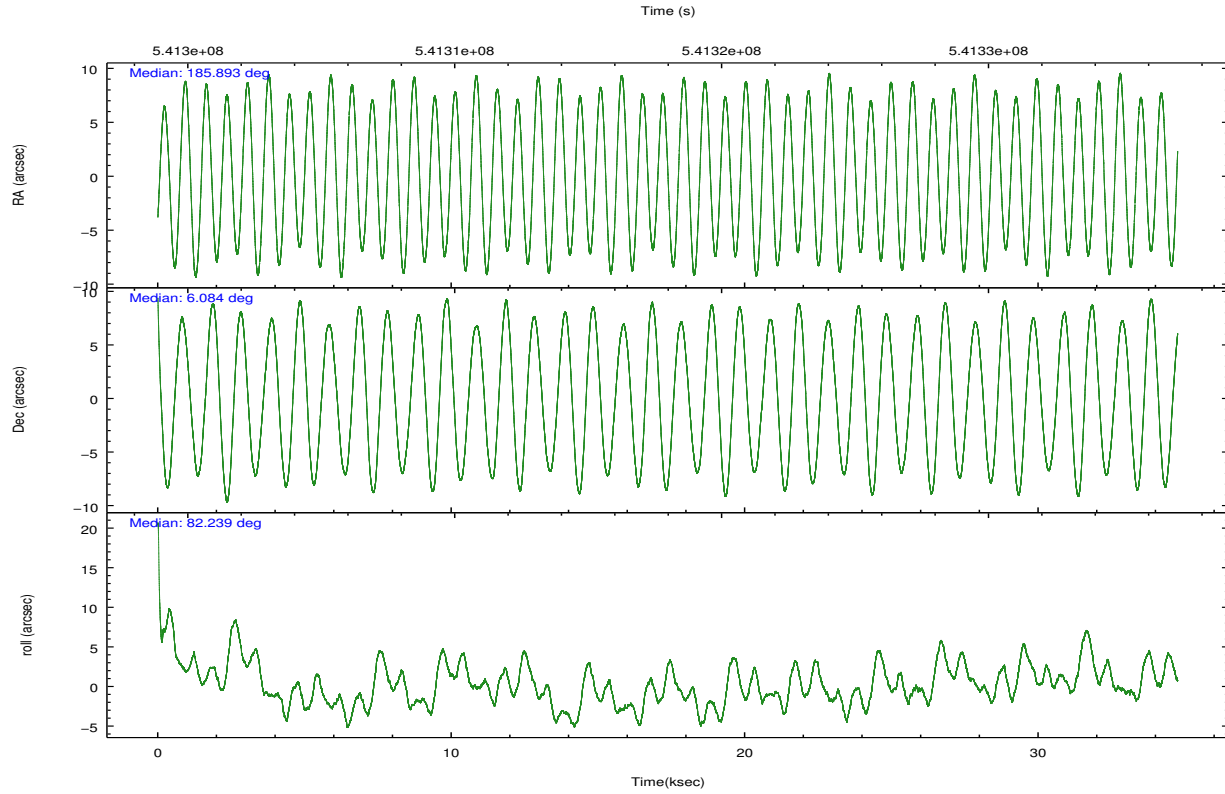
	ccd 3	ccd 6	ccd 7	ccd 8
grade 0 events	6120	6525	8768	16088
	3%	3%	3%	7%
grade 1 events	92	72	279	170
	0%	0%	0%	0%
grade 2 events	4042	4578	20413	14088
	2%	2%	9%	6%
grade 3 events	1958	2100	8206	6296
	1%	1%	3%	2%
grade 4 events	1980	1944	8184	5770
	1%	1%	3%	2%
grade 5 events	8571	8627	23017	12615
	5%	5%	10%	5%
grade 6 events	3871	4763	52390	16130
	2%	2%	23%	7%
grade 7 events	132053	141517	103981	150147
	83%	83%	46%	67%

## 2.2 Compared Parameters

Parameter	Planned	Actual	Parameter	Planned	Actual
Instrument	ACIS	ACIS	Obspar format version number	7	7
Detector	ACIS-3678	ACIS-3678	Obspar file type	PREDICTED	ACTUAL
Grating	NONE	NONE	Obspar update status	NONE	UPDATED
Data mode	VFAINT	VFAINT	CCD I0 on	N	N
Observation mode	POINTING	POINTING	CCD I1 on	N	N
[deg] Pointing RA	185.903848	185.8930579216127	CCD I2 on	O1	N
[deg] Pointing Dec	6.058516	6.083762605316346	CCD I3 on	O2	Y
[deg] Pointing Roll	82.087794	82.24556332988769	CCD S0 on	N	N
[mm] SIM focus pos	-0.684267	-0.6828225247311905	CCD S1 on	N	N
[mm] SIM defocus	0	0.001444936568705701	CCD S2 on	Y	Y
[mm] SIM translation stage pos	-190.132523	-190.1400660498719	CCD S3 on	Y	Y
[mm] SIM translation stage offset	0	0.00754346686406393	CCD S4 on	Y	Y
[s] Observation start time (MET)	541301366.184000	541299906.10991	CCD S5 on	N	N
Observation start date	2015-02-26T01:28:19	2015-02-26T01:05:06	Number of optional ACIS chips dropped	1	1
[s] Observation end time (MET)	541335366.184000	541336897.84948	On-chip summing requested	N	N
Observation end date	2015-02-26T10:54:59	2015-02-26T11:21:37	Subarray requested	NONE	NONE
Read mode	TIMED	TIMED	Alternating exposures requested	N	N
			[s] Primary exposure time	0.000000	3.1

## 2.3 Aspect





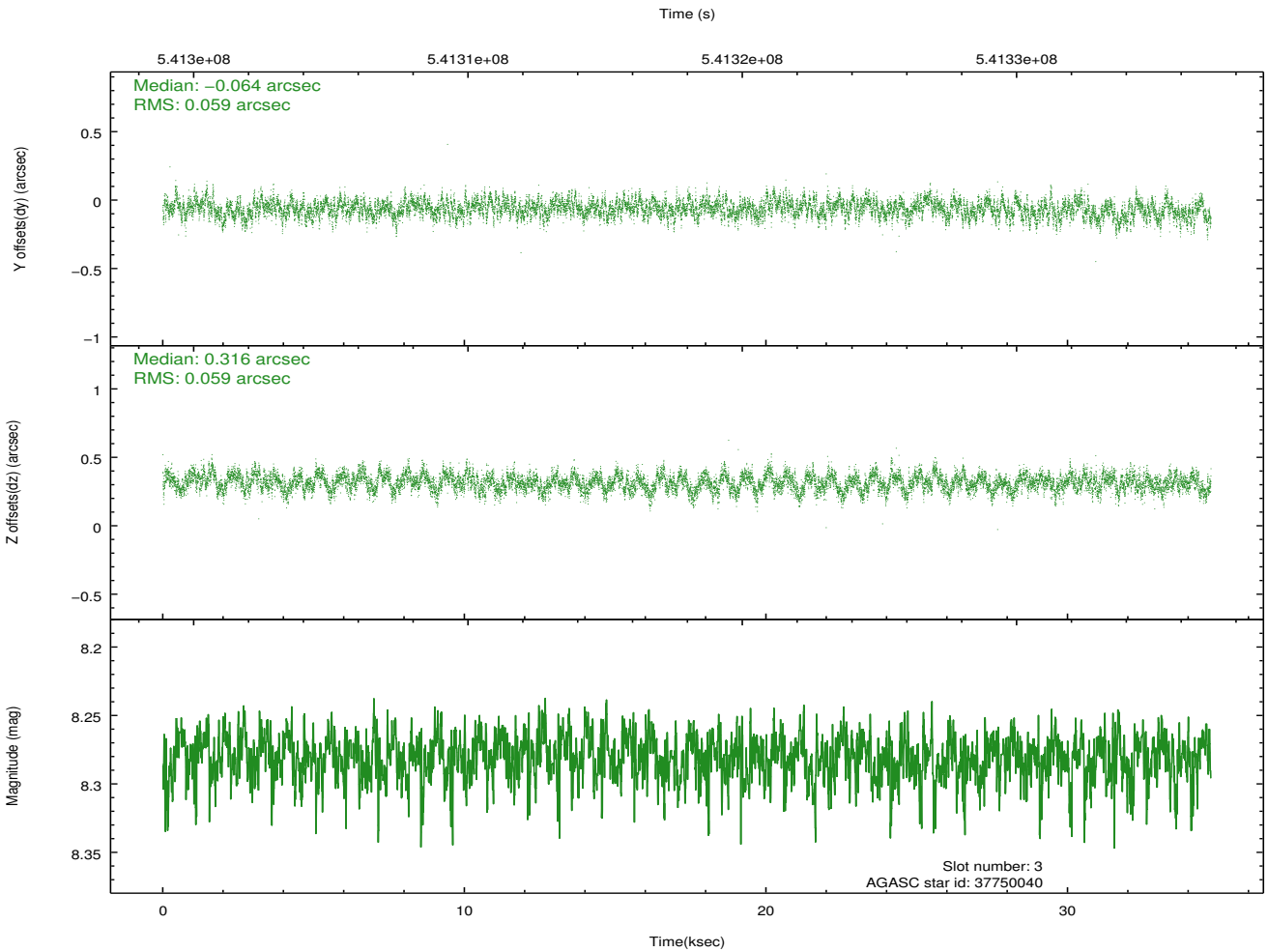
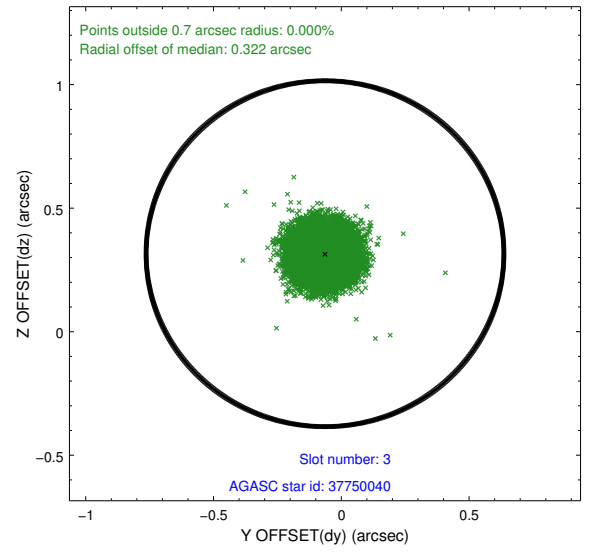
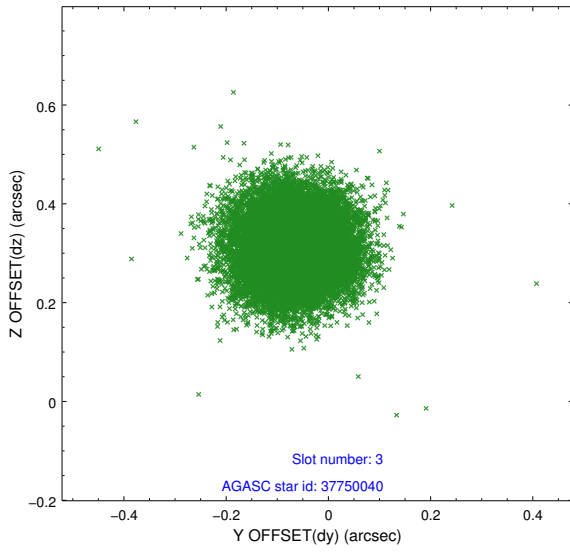
### Slot Statistics

slot	status	used	id	mag	n_pts	med_dy	med_dz	dr1	dr2	ra	dec	mean_y	mean_z
0	FID		ACIS-S-2	7.12	8476	-0.140	-0.103	0.011	0.019	0.000000	0.000000	-774.21	-1739.81
1	FID		ACIS-S-4	7.22	8476	0.342	0.095	0.012	0.022	0.000000	0.000000	2139.55	168.79
2	FID		ACIS-S-5	7.23	8476	-0.235	0.017	0.012	0.021	0.000000	0.000000	-1827.07	162.47
3	GUIDE	used	37750040	8.28	16949	-0.064	0.316	0.089	0.143	186.217544	6.363680	1243.04	-959.57
4	GUIDE	used	37753960	9.16	16940	-0.552	-0.426	0.107	0.170	185.663596	6.383809	1041.24	1012.62
5	GUIDE	used	37757648	8.93	16946	0.240	-0.081	0.120	0.189	185.473177	5.514744	-2150.77	1259.54
6	GUIDE	used	37757896	9.29	16882	0.118	-0.122	0.123	0.200	185.303648	5.490342	-2320.94	1849.01
7	GUIDE	used	37752304	9.27	16942	0.256	0.311	0.128	0.207	186.122283	5.444902	-2079.82	-1078.88

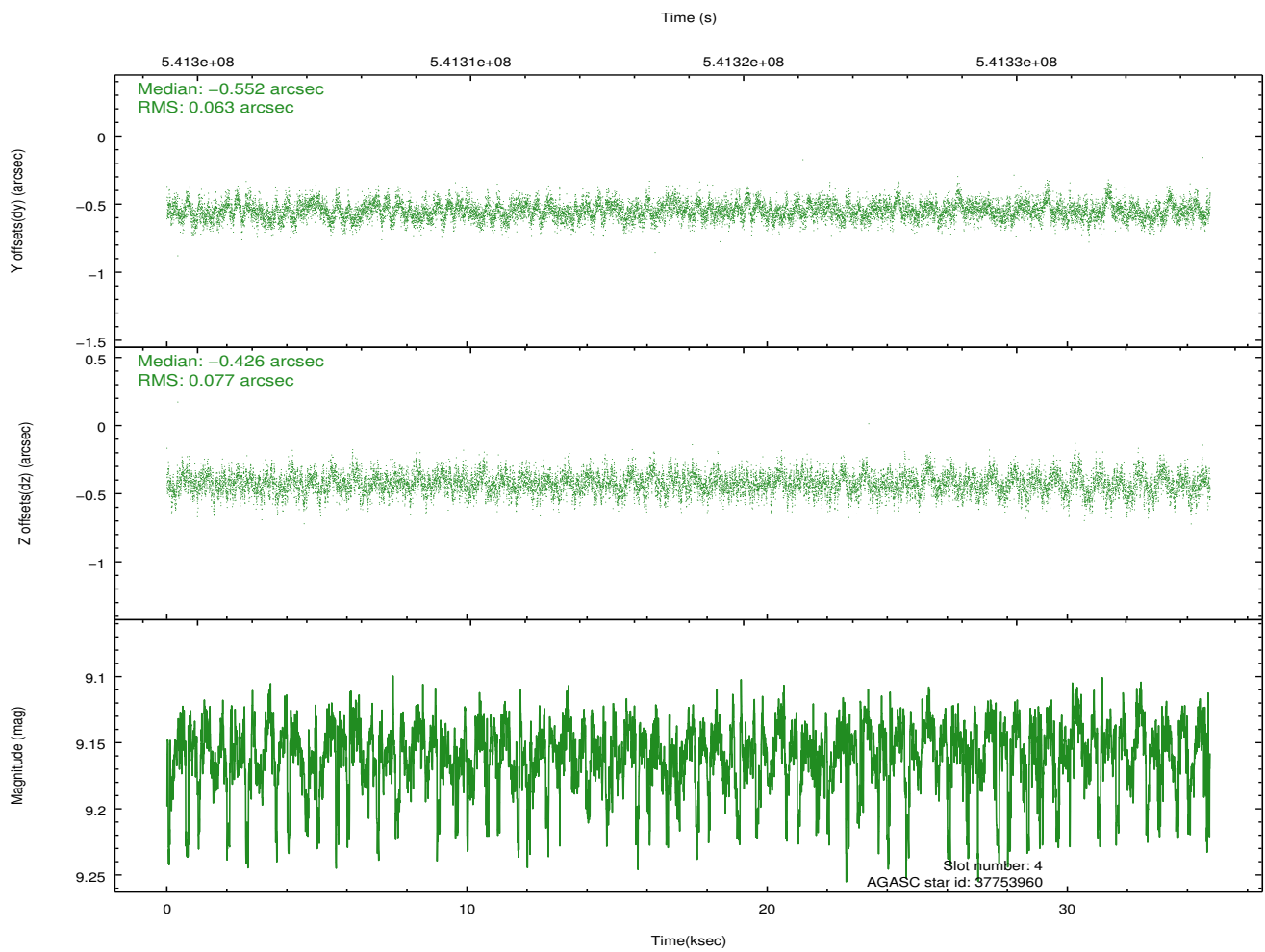
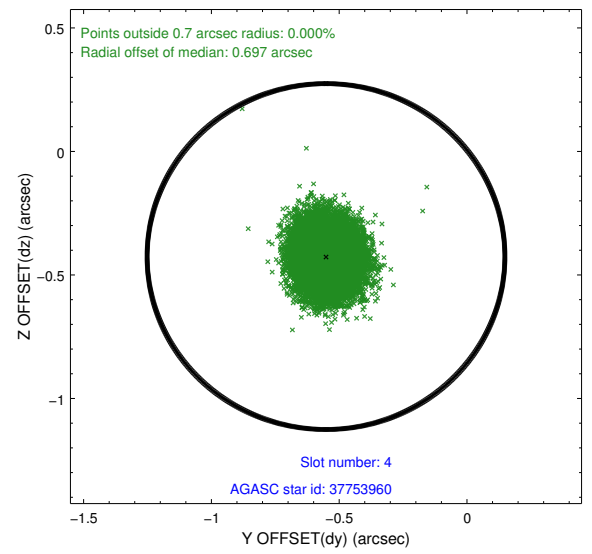
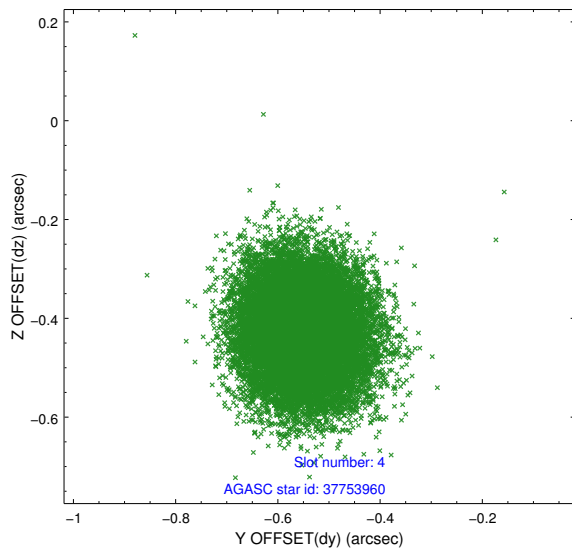
∞

## 2.4 Star Slots

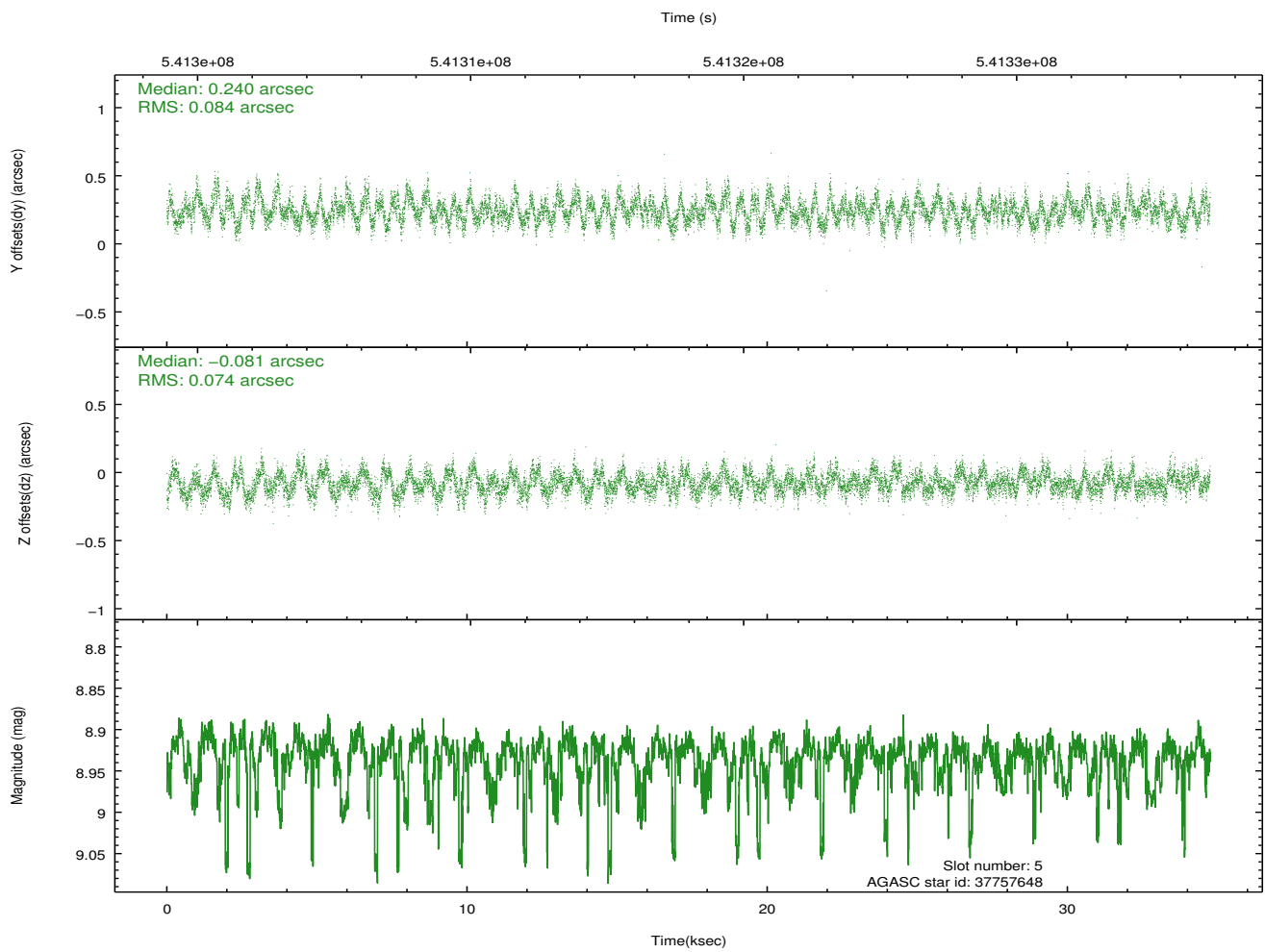
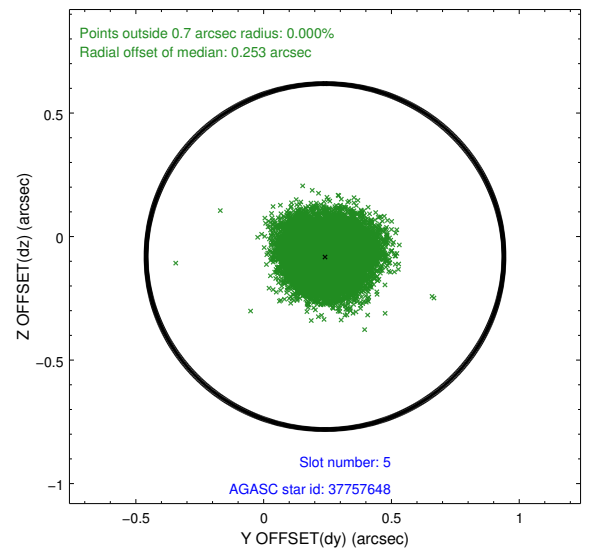
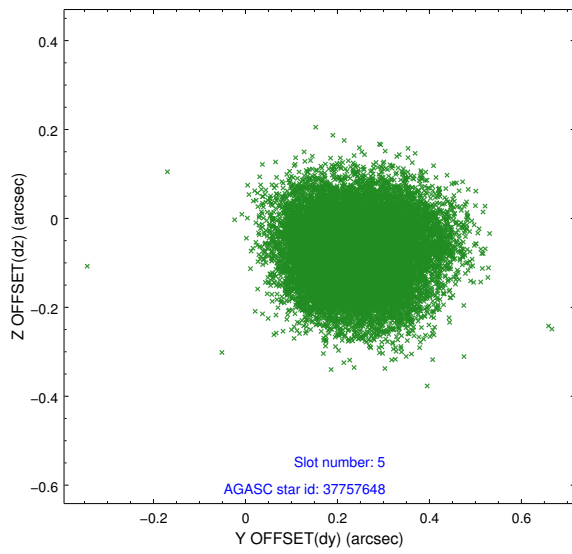
### 2.4.1 Slot 3



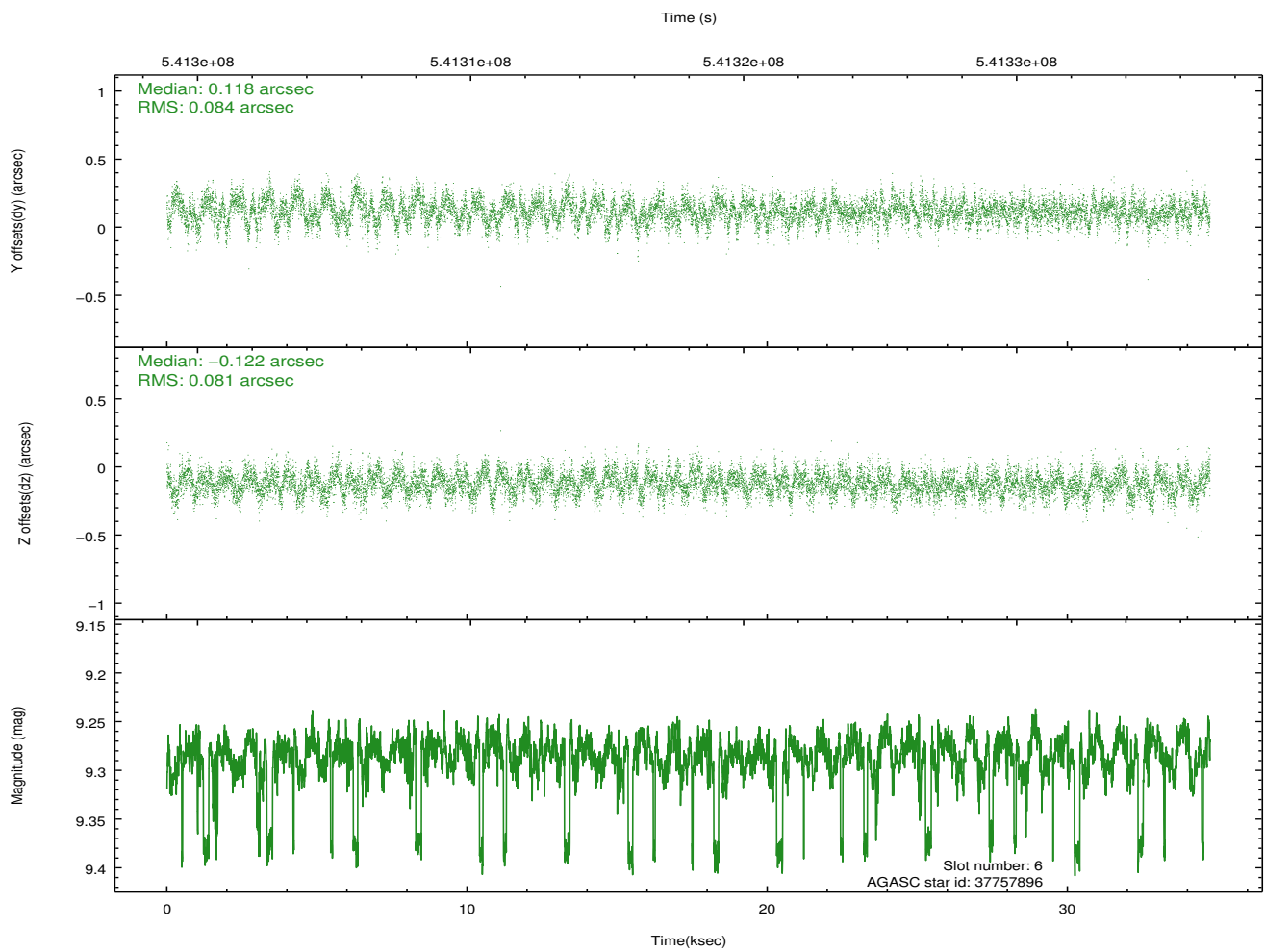
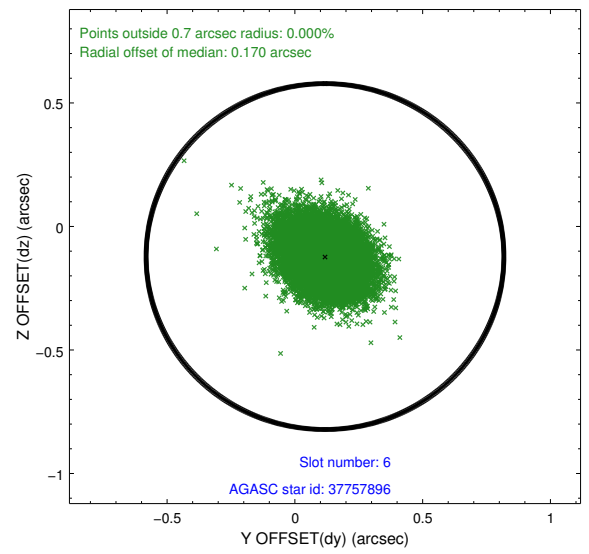
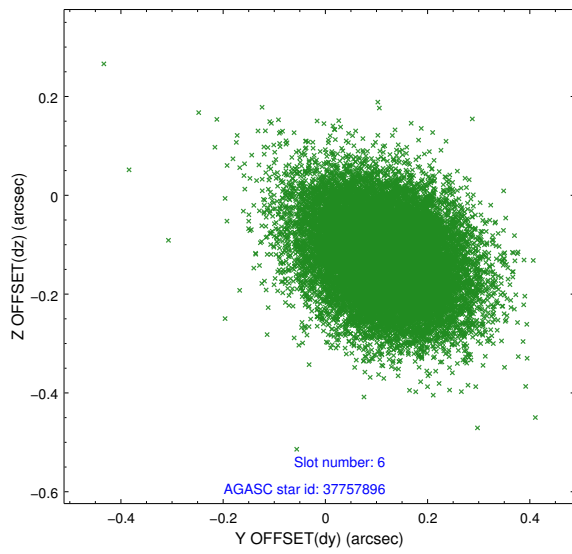
## 2.4.2 Slot 4



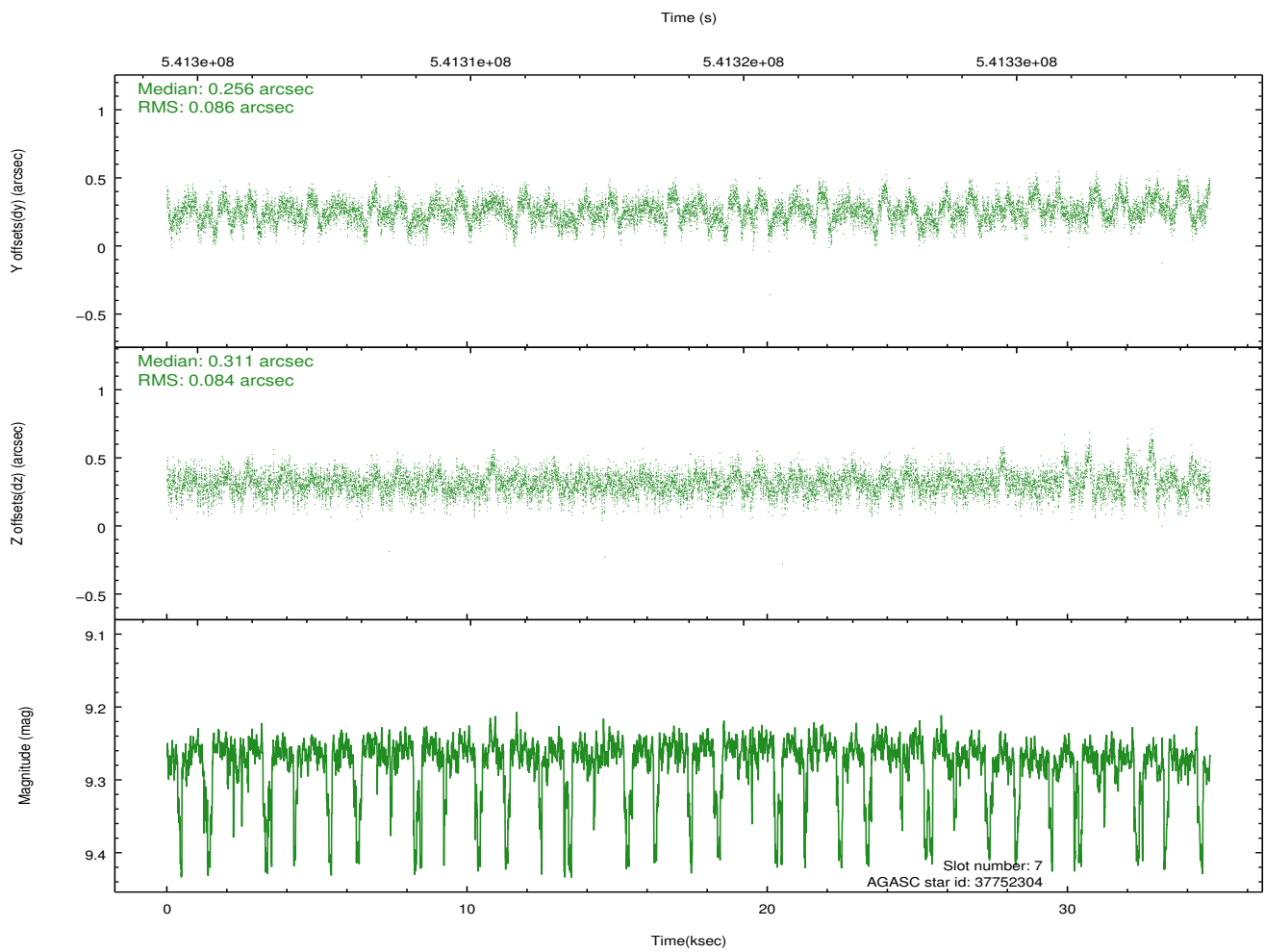
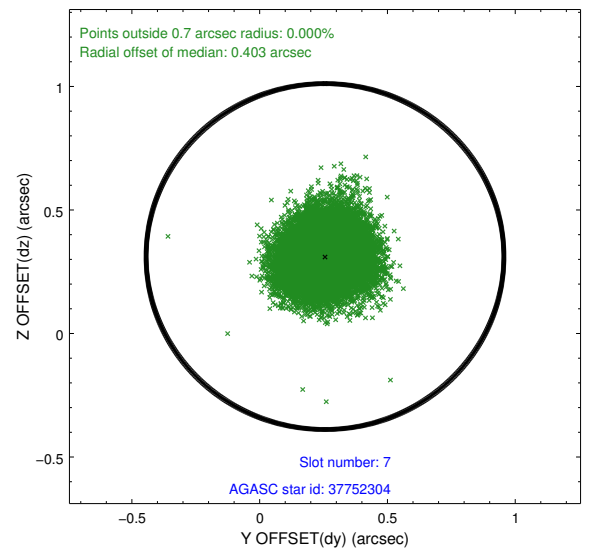
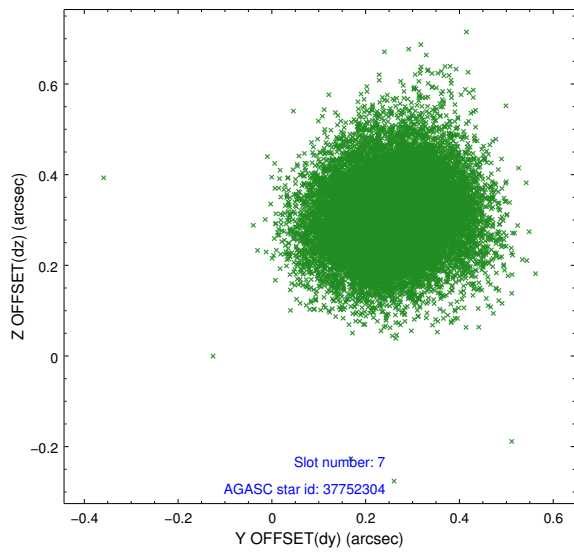
### 2.4.3 Slot 5



## 2.4.4 Slot 6

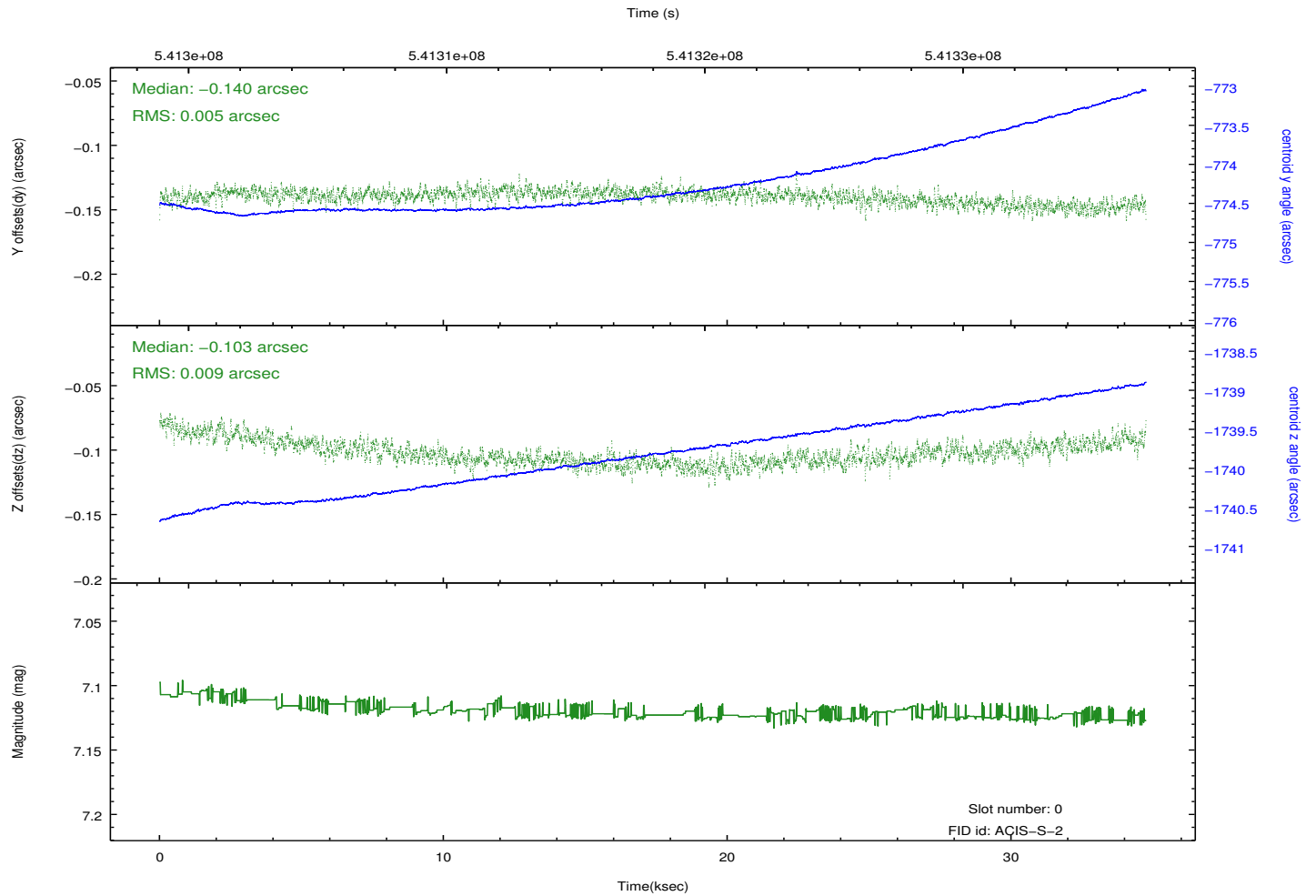
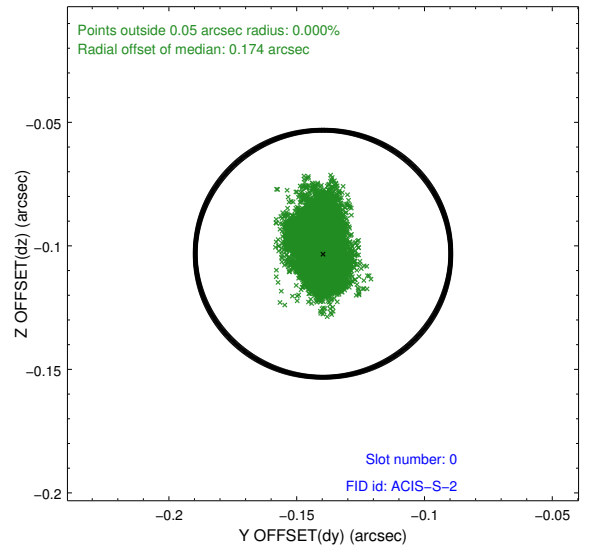
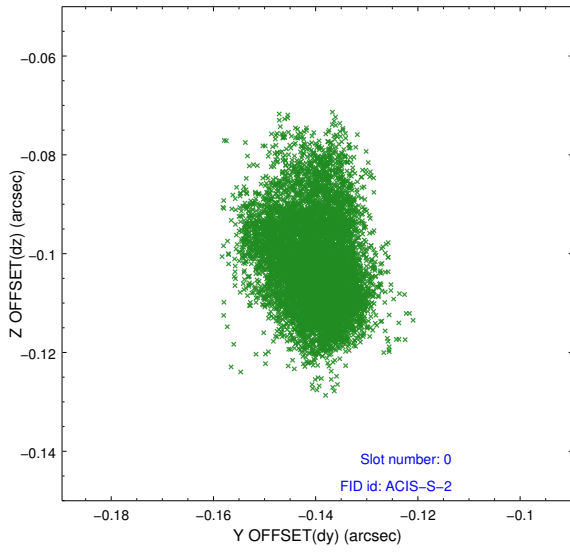


## 2.4.5 Slot 7

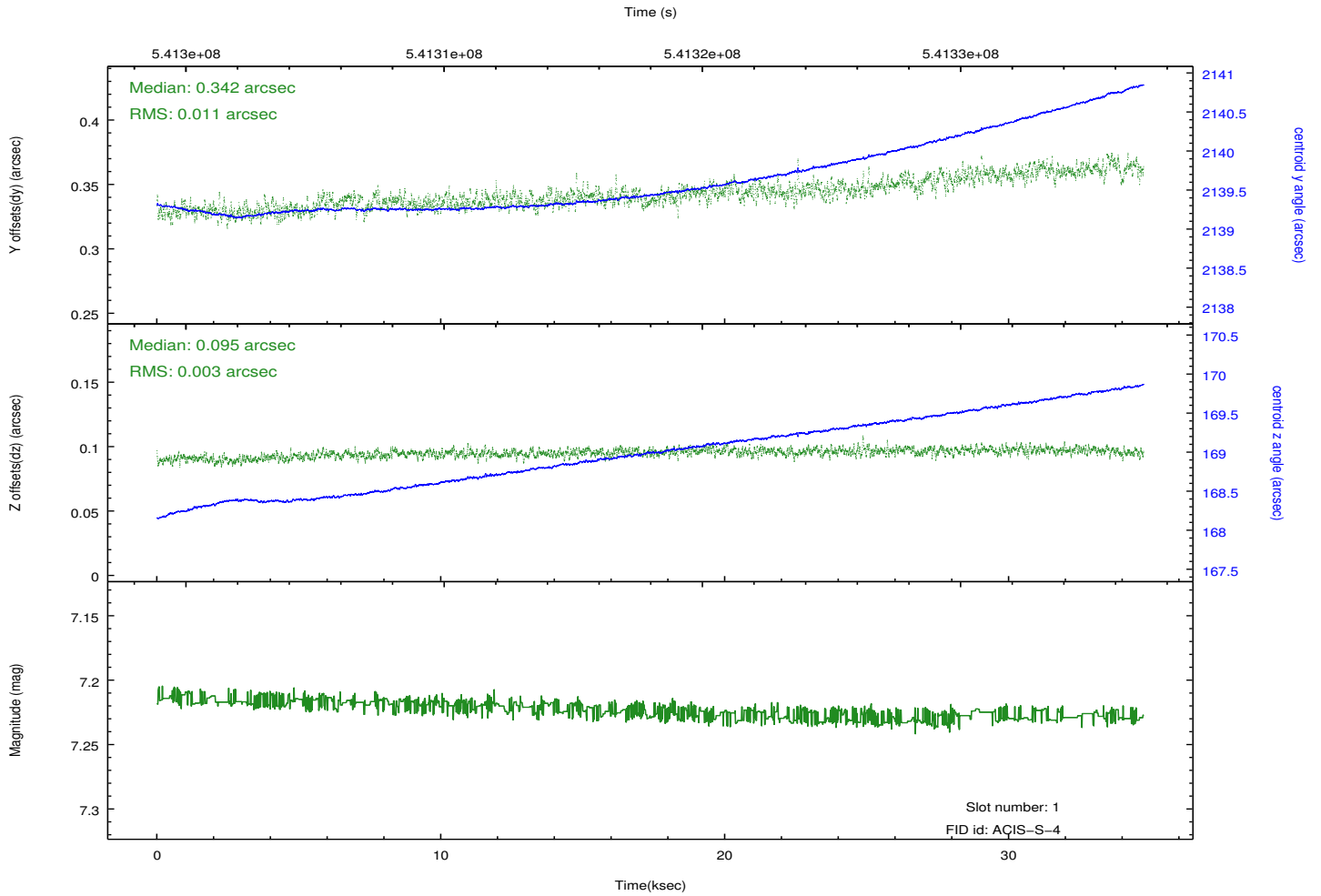
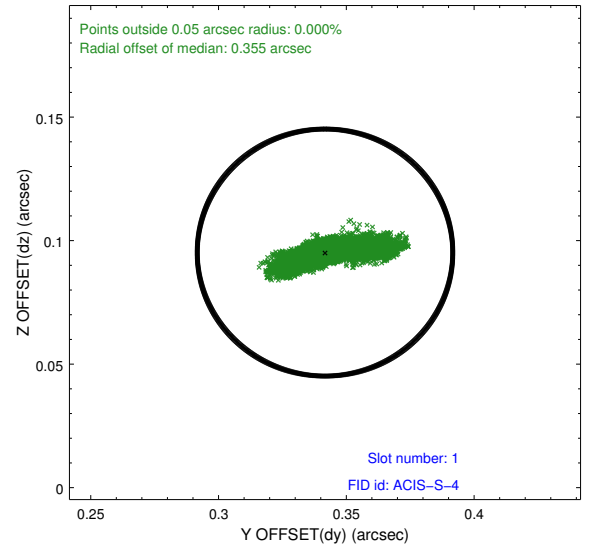
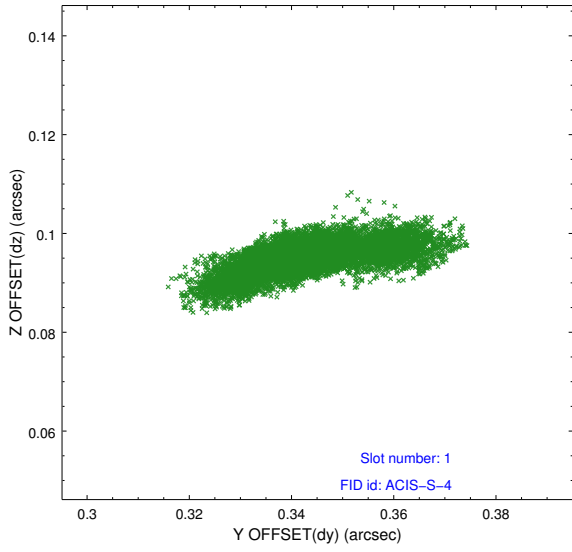


## 2.5 FID Slots

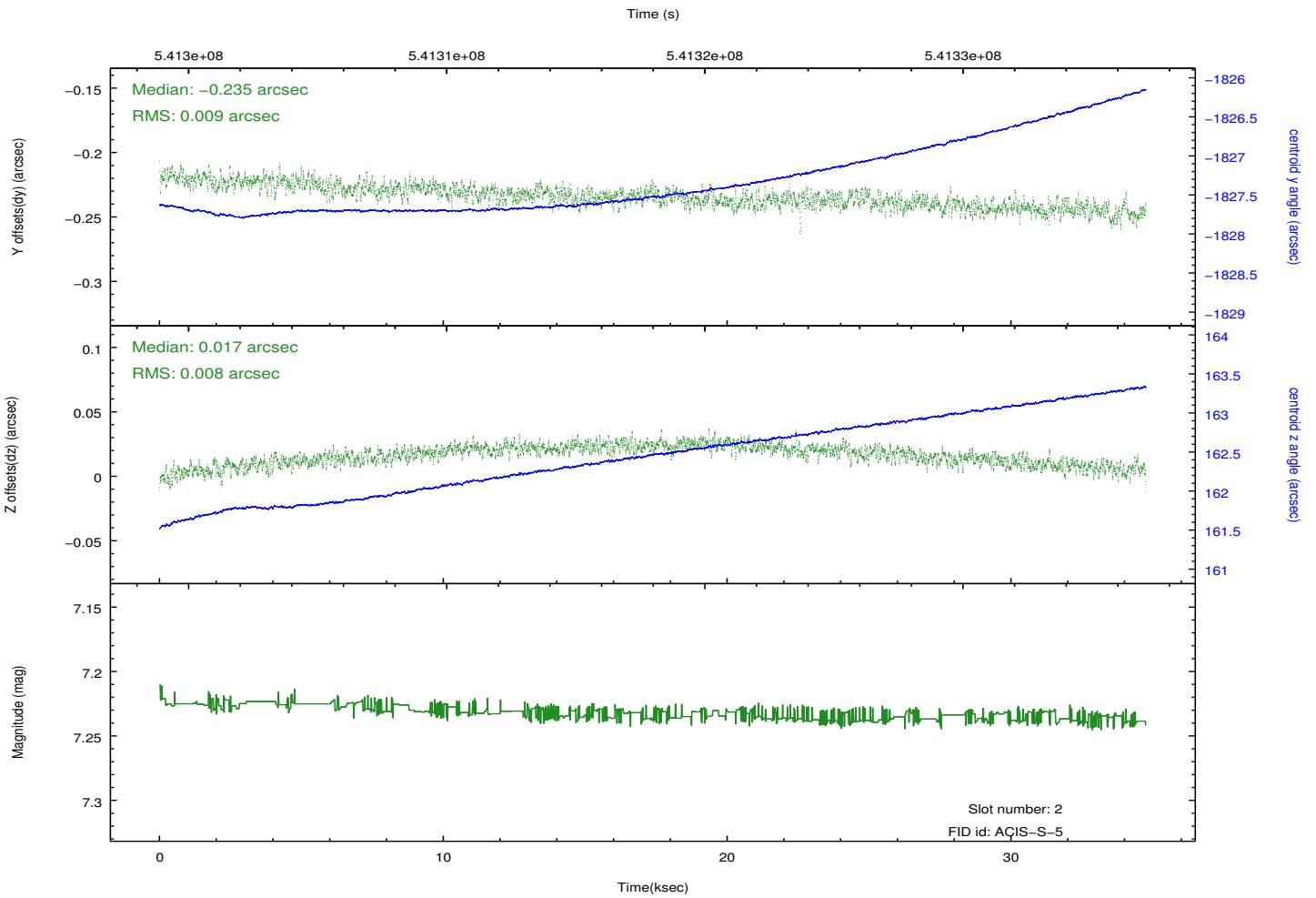
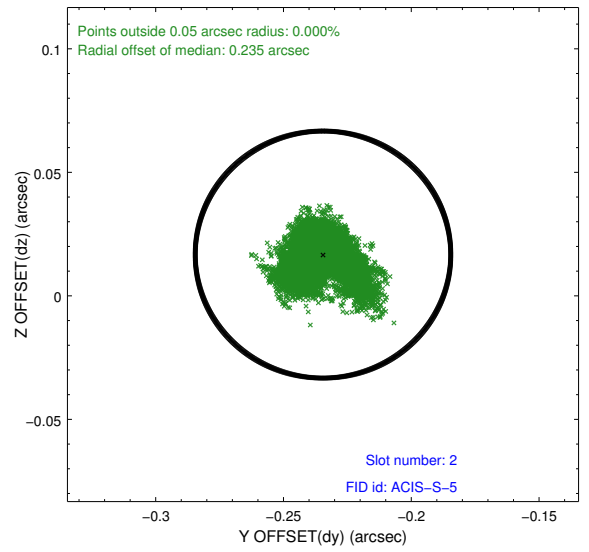
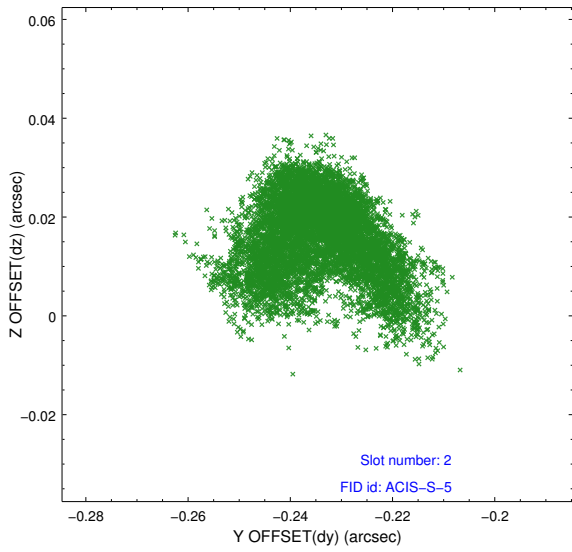
### 2.5.1 Slot 0



## 2.5.2 Slot 1



### 2.5.3 Slot 2



# A Summary

## A.1 Status

V&V Scientist	Joy Nichols
V&V Date (YYYY-MM-DD)	2015.02.27
V&V Edition	1
V&V Disposition and Status	OK
V&V Charge Time	34.07185395205

## A.2 Comments