

V&V Reference Report

L2 ASCDS Version : 8.4.5

Observation 2020 - L2 Version 3
Chandra X-Ray Center

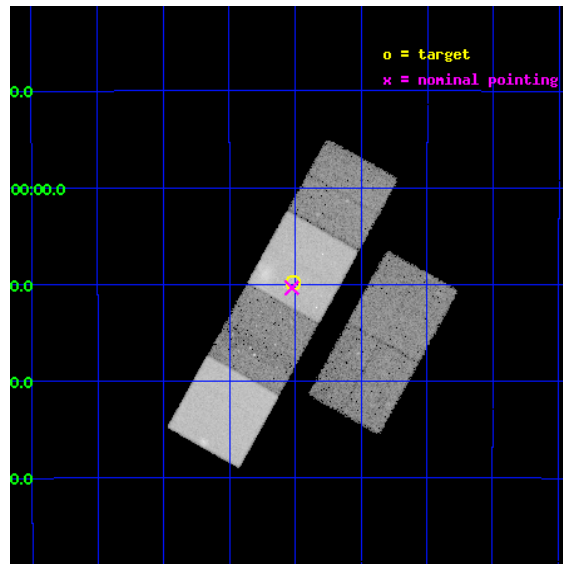
L2 Processing Date : Sep 14 2012

Contents

1	Front	2
2	OBI	3
2.1	OBI	3
2.1.1	Images	3
2.1.2	Bias	3
2.1.3	Parameters	4
2.1.4	Events	4
2.2	Compared Parameters	5
2.3	Aspect	6
2.4	Star Slots	9
2.4.1	Slot 3	9
2.4.2	Slot 4	10
2.4.3	Slot 5	11
2.4.4	Slot 6	12
2.4.5	Slot 7	13
2.5	FID Slots	14
2.5.1	Slot 0	14
2.5.2	Slot 1	15
2.5.3	Slot 2	16
A	Summary	17
A.1	Status	17
A.2	Comments	17

1 Front

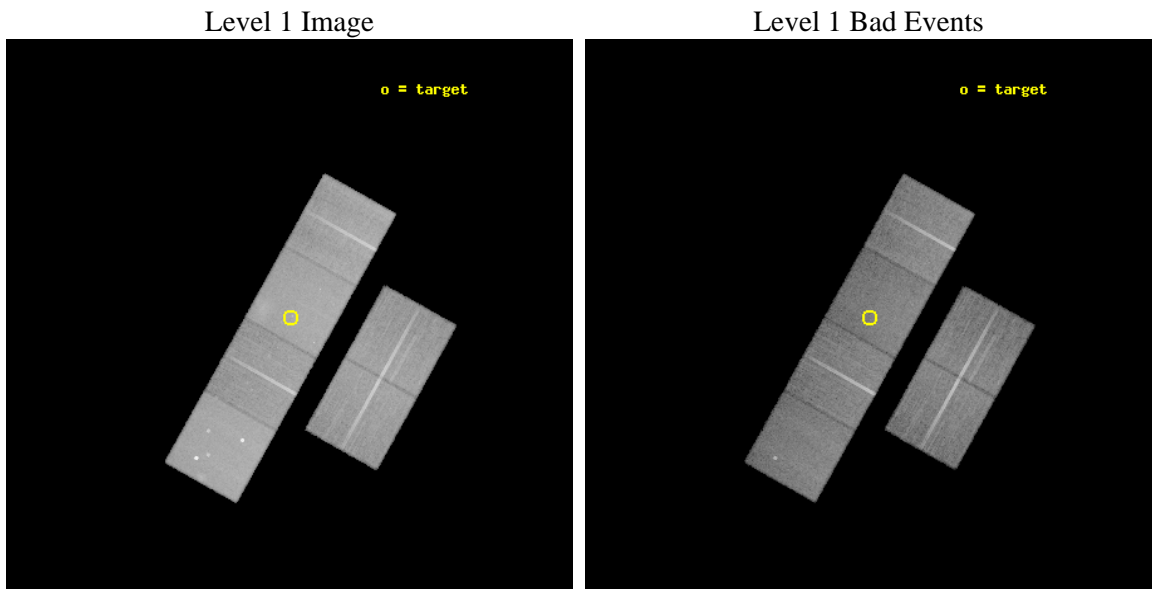
seq_num	600154	Sequence number
obs_id	2020	Observation id
title	THE HALOS OF POST-MERGER ELLIPTICALS	Proposal title
observer	Dr. David Davis	Principal investigator
object	NGC 2865	Source name
dtycycle	0	
cycle	P	events from which exps? Prim/Second/Both
ra_targ	140.877917	Observer's specified target RA [deg]
dec_targ	-23.163389	Observer's specified target Dec [deg]
ra_nom	140.88137972011	Nominal RA [deg]
dec_nom	-23.172658685746	Nominal Dec [deg]
roll_nom	299.18090097179	Nominal Roll [deg]
revision	3	Processing version of data
ontime	29878.27670604	Sum of GTIs [s]
livetime	29499.93997585	Livetime [s]
ontime2	29875.076775789	Sum of GTIs [s]
ontime3	29878.153586045	Sum of GTIs [s]
ontime5	29874.994695798	Sum of GTIs [s]
ontime6	29878.194626048	Sum of GTIs [s]
ontime7	29878.27670604	Sum of GTIs [s]
ontime8	29871.630605564	Sum of GTIs [s]
l2events	320690	Number of level 2 events



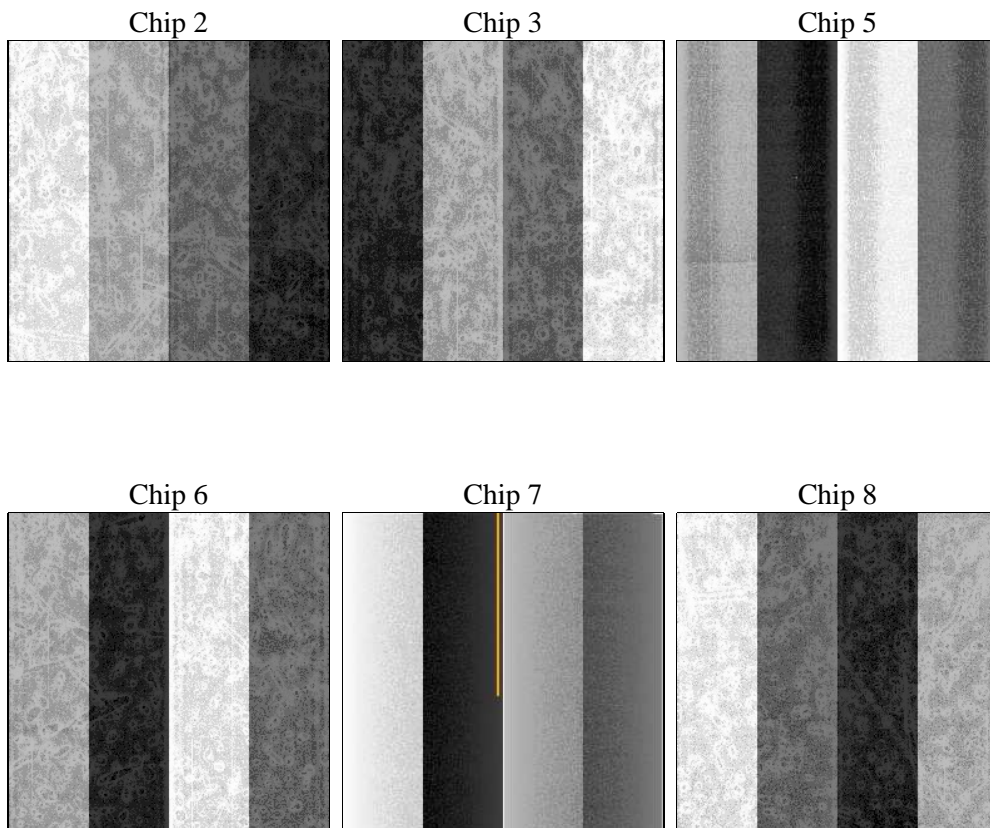
2 OBI

2.1 OBI

2.1.1 Images



2.1.2 Bias



2.1.3 Parameters

obi_num	0	Obi number	sched_exp_time	30000.000000	[s] Scheduled observation exposure time
ascdsver	8.4.5	Processing system revision	ontime	29878.27670604	Sum of GTIs [s]
caldbver	4.5.1.1	 	ontime2	29875.076775789	Sum of GTIs [s]
date	2012-09-14T04:25:46	Date and time of file creation	ontime3	29878.153586045	Sum of GTIs [s]
revision	3	Processing version of data	ontime5	29874.994695798	Sum of GTIs [s]
			ontime6	29878.194626048	Sum of GTIs [s]
			ontime7	29878.27670604	Sum of GTIs [s]
			ontime8	29871.630605564	Sum of GTIs [s]
			l1events	1413954	Number of level 1 events

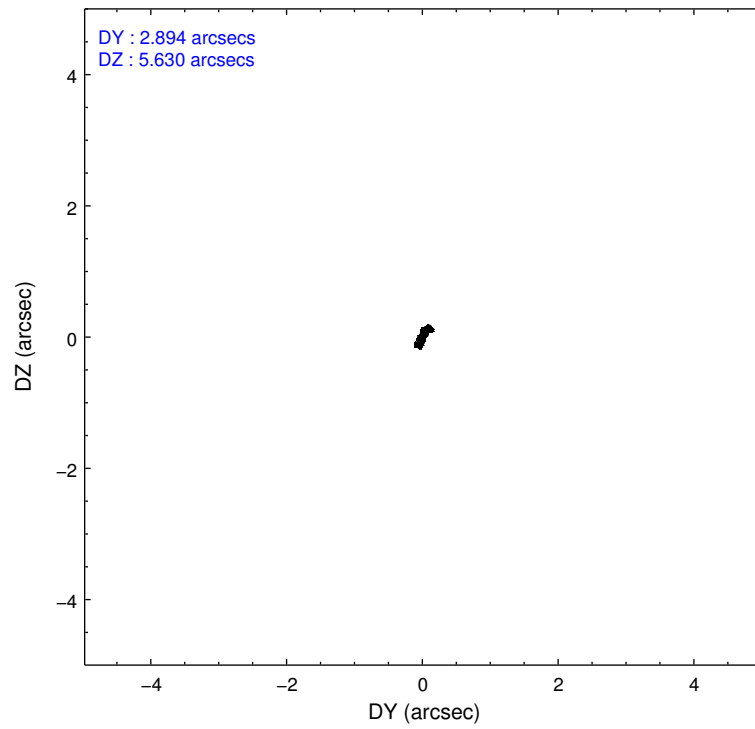
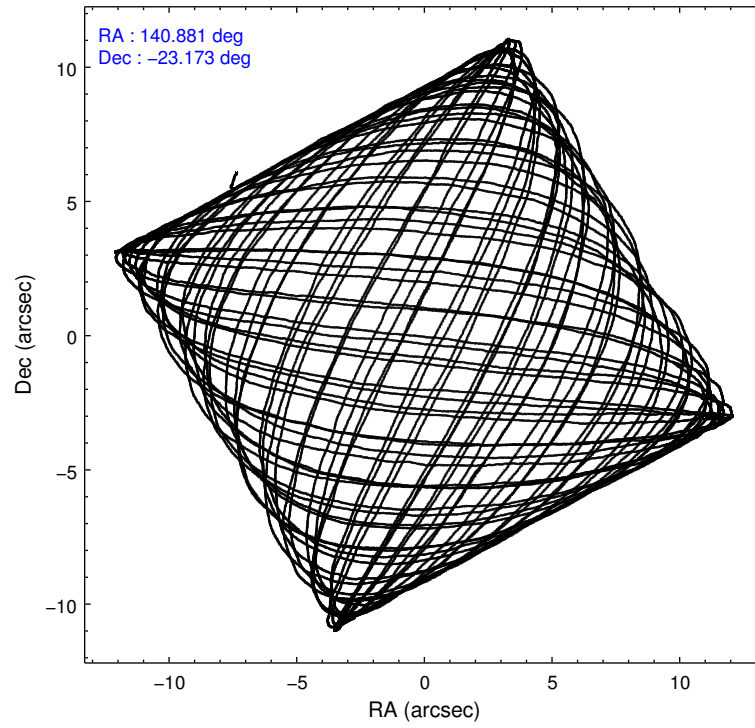
2.1.4 Events

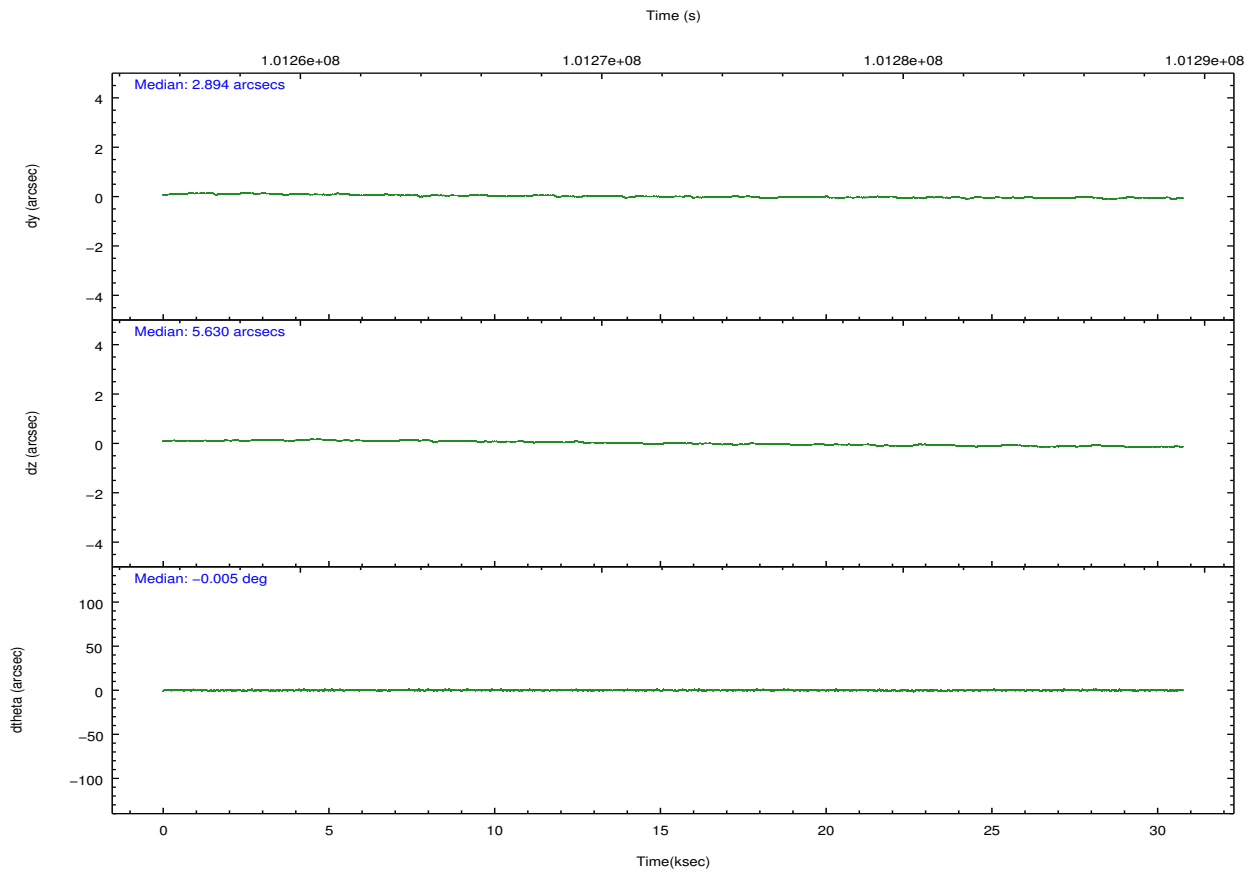
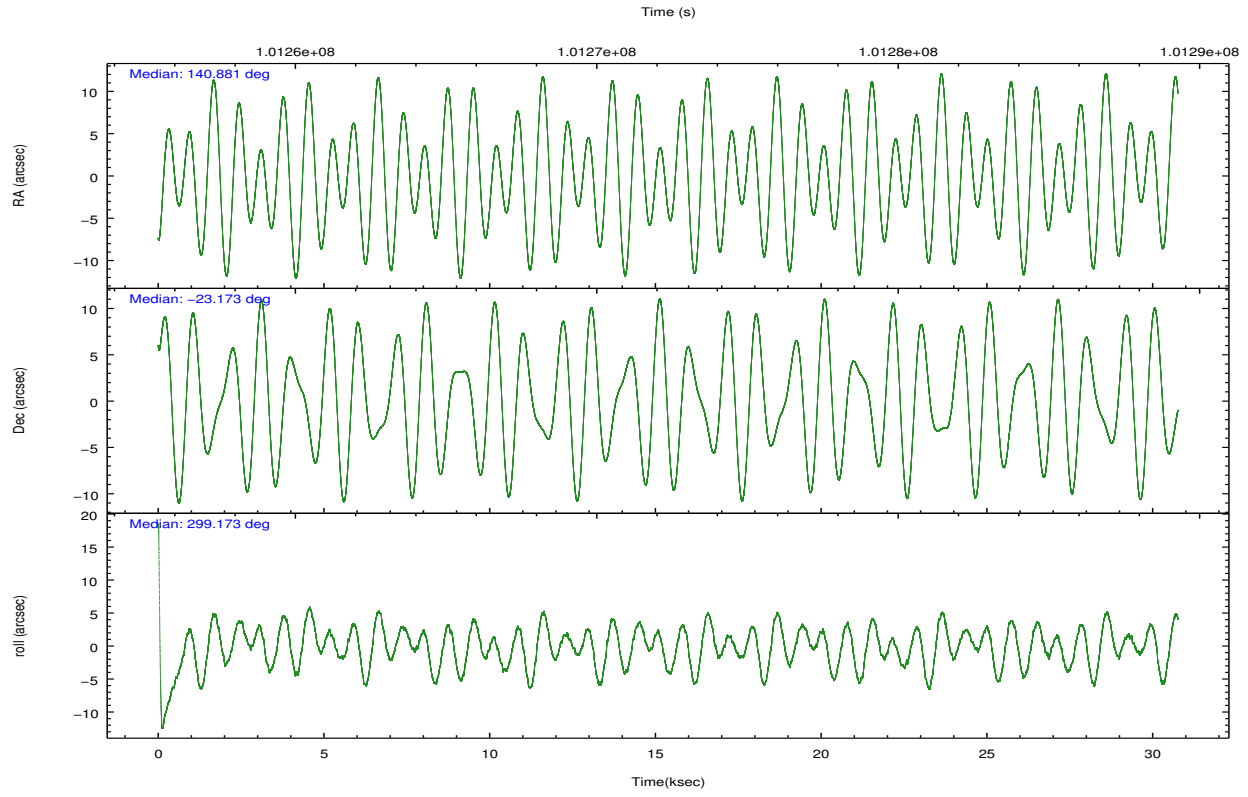
	ccd 2	ccd 3	ccd 5	ccd 6	ccd 7	ccd 8		ccd 2	ccd 3	ccd 5	ccd 6	ccd 7	ccd 8
level 1 events	202606	198916	291350	203645	263894	253543	grade 0 events	9475	9669	17328	10248	12269	17041
rejected events	179742	176443	152533	179239	147428	201695		4%	4%	5%	5%	4%	6%
rejected %	88%	88%	52%	88%	55%	79%	grade 1 events	84	81	352	100	216	174
								0%	0%	0%	0%	0%	0%
							grade 2 events	5017	4622	42396	4950	23345	10817
								2%	2%	14%	2%	8%	4%
							grade 3 events	2134	2148	5699	2259	10775	5838
								1%	1%	1%	1%	4%	2%
							grade 4 events	2115	2152	5477	2326	10620	5412
								1%	1%	1%	1%	4%	2%
							grade 5 events	6838	7676	21234	8308	24201	10400
								3%	3%	7%	4%	9%	4%
							grade 6 events	4124	3885	67927	4626	59468	12767
								2%	1%	23%	2%	22%	5%
							grade 7 events	172819	168683	130937	170828	123000	191094
								85%	84%	44%	83%	46%	75%

2.2 Compared Parameters

Parameter	Planned	Actual	Parameter	Planned	Actual
Instrument	ACIS	ACIS	Obspar format version number	7	7
Detector	ACIS-235678	ACIS-235678	Obspar file type	PREDICTED	ACTUAL
Grating	NONE	NONE	Obspar update status	NONE	UPDATED
Data mode	FAINT	FAINT	Number of optional ACIS chips dropped	0	0
Observation mode	POINTING	POINTING	On-chip summing requested	N	N
[deg] Pointing RA	140.855722	140.8813797201141	Subarray requested	NONE	NONE
[deg] Pointing Dec	-23.158900	-23.17265868574555	Alternating exposures requested	N	N
[deg] Pointing Roll	299.014170	299.1809009717924	[s] Primary exposure time	0.000000	3.2
[mm] SIM focus pos	-0.684267	-0.6828225247311905			
[mm] SIM defocus	0	0.001444936568705701			
[mm] SIM translation stage pos	-190.132523	-190.1400660498719			
[mm] SIM translation stage offset	0	0.00754346686406393			
[s] Observation start time (MET)	101257747.184000	101256497.6165			
Observation start date	2001-03-17T23:08:03	2001-03-17T22:48:17			
[s] Observation end time (MET)	101287747.184000	101288612.91774			
Observation end date	2001-03-18T07:28:03	2001-03-18T07:43:32			
Read mode	TIMED	TIMED			

2.3 Aspect



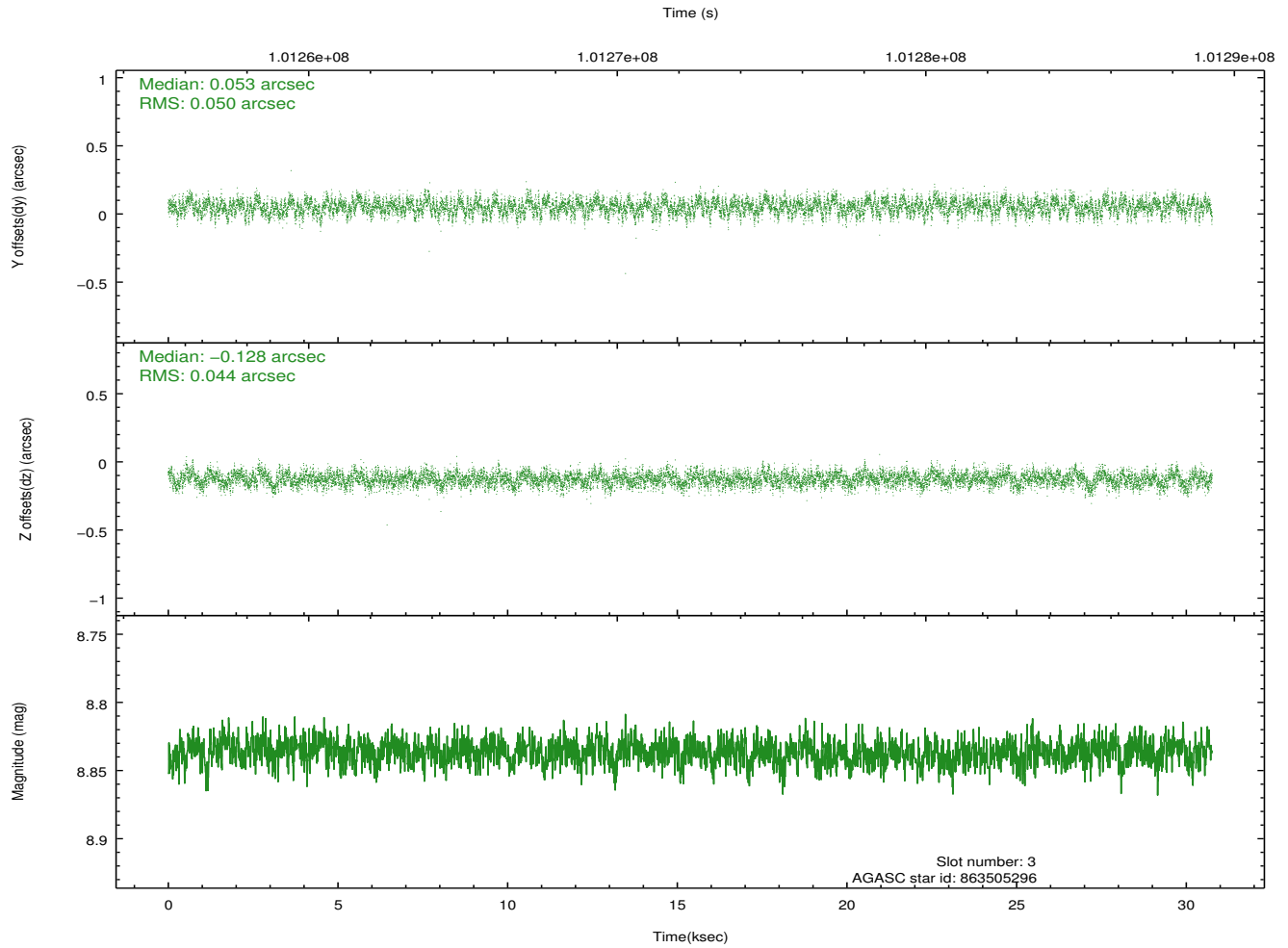
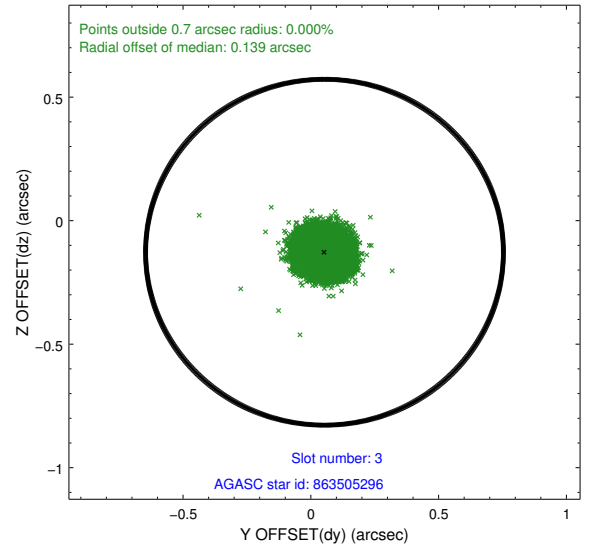
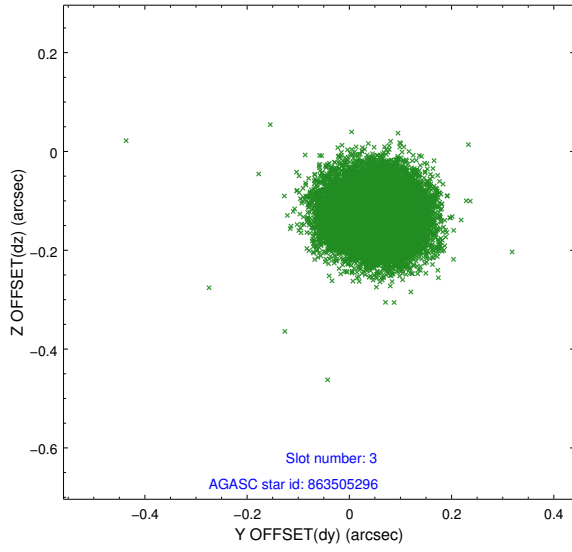


Slot Statistics

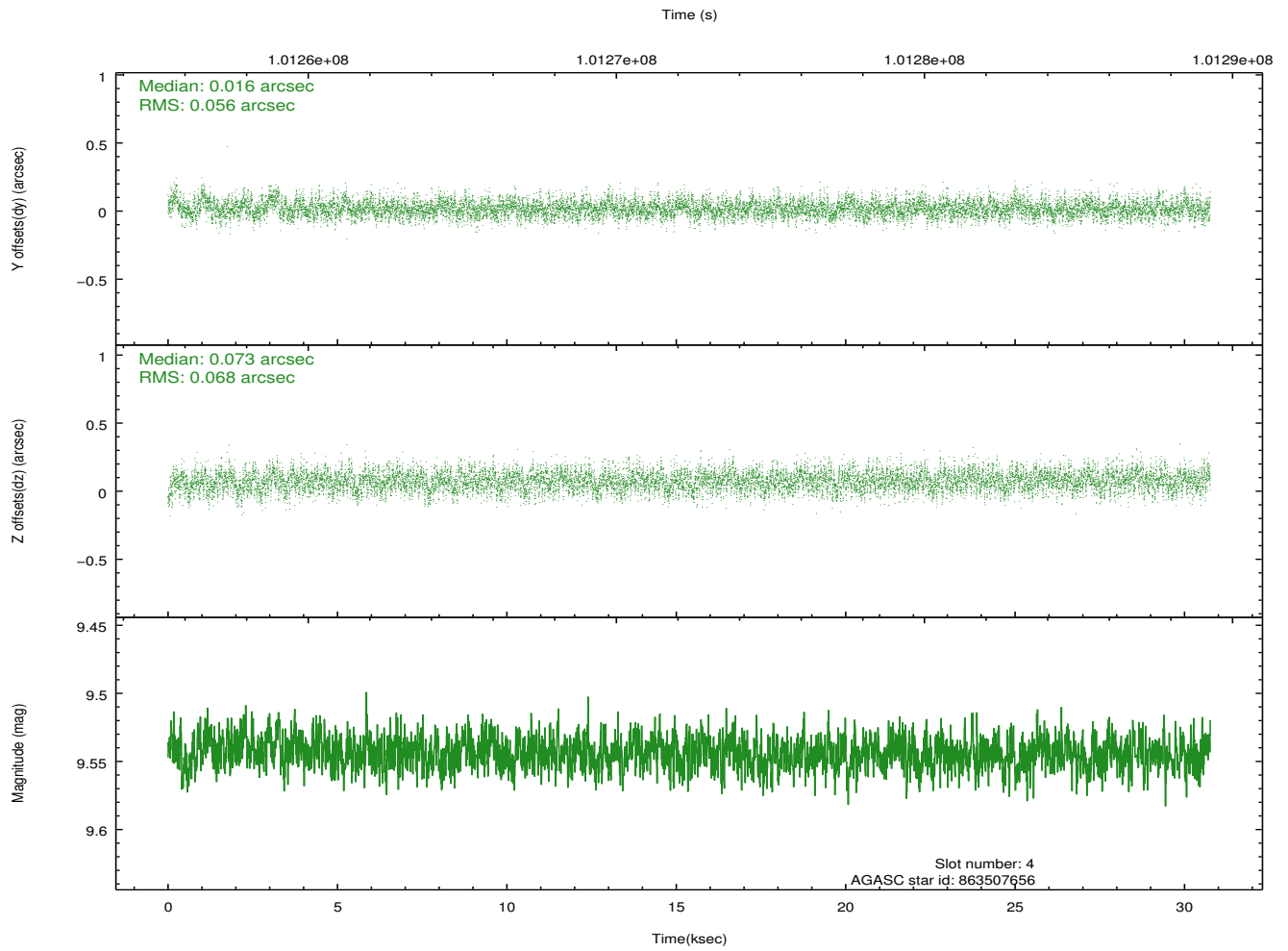
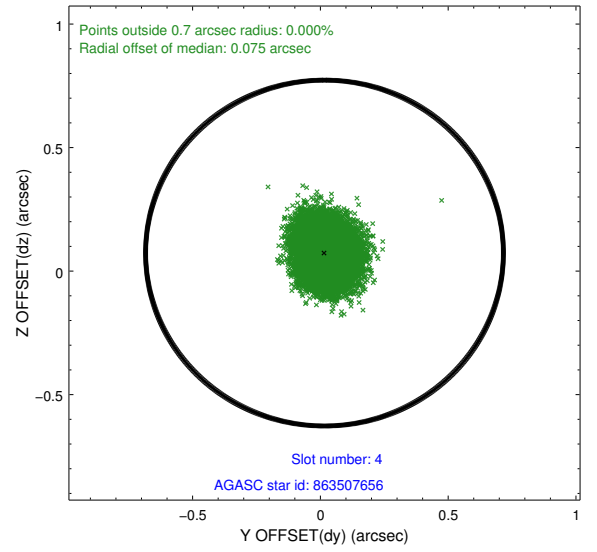
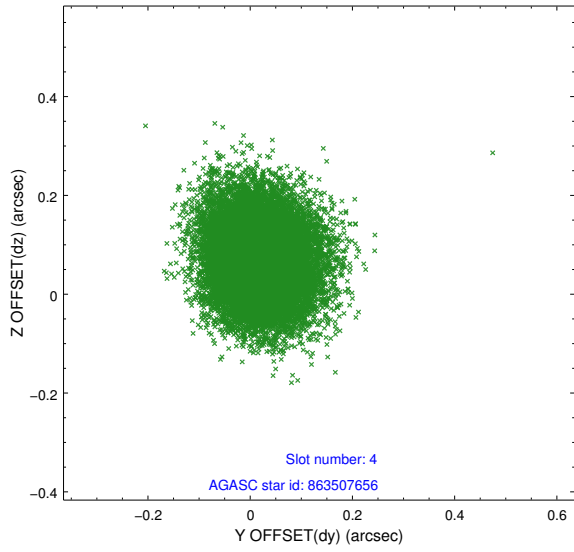
slot	status	id	mag	n_pts	med_dy	med_dz	dr1	dr2	ra	dec	mean_y	mean_z
0	FID	ACIS-S-2	7.11	7503	-0.004	-0.009	0.006	0.011	0.000000	0.000000	-755.51	-1726.79
1	FID	ACIS-S-4	7.20	7502	-0.031	0.000	0.006	0.011	0.000000	0.000000	2157.67	181.69
2	FID	ACIS-S-6	7.36	7504	0.007	0.016	0.007	0.012	0.000000	0.000000	406.52	819.15
3	GUIDE	863505296	8.84	14997	0.053	-0.128	0.072	0.112	140.759535	-22.877631	-1039.59	212.68
4	GUIDE	863507656	9.54	14996	0.016	0.073	0.094	0.152	140.393360	-23.499278	334.06	-1929.41
5	GUIDE	863382400	8.51	14997	-0.068	0.023	0.084	0.138	139.996555	-22.962629	-1991.11	-2151.43
6	GUIDE	863506328	8.02	15003	0.047	0.085	0.055	0.087	141.108425	-22.914450	-362.25	1160.02
7	GUIDE	863506576	7.26	15003	-0.050	-0.049	0.045	0.071	141.100269	-22.895120	-436.18	1170.33

2.4 Star Slots

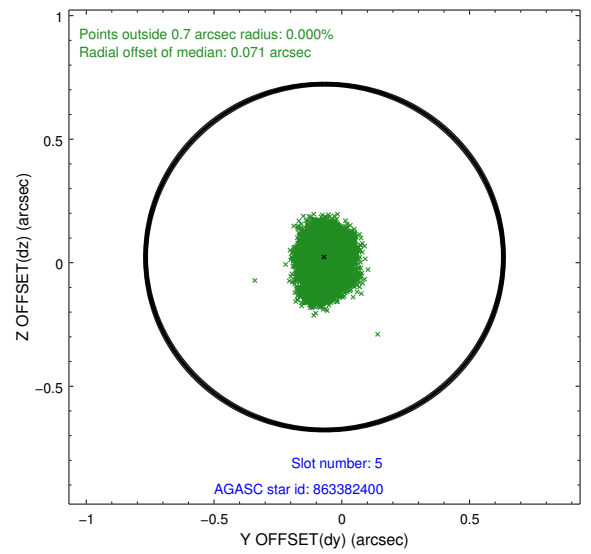
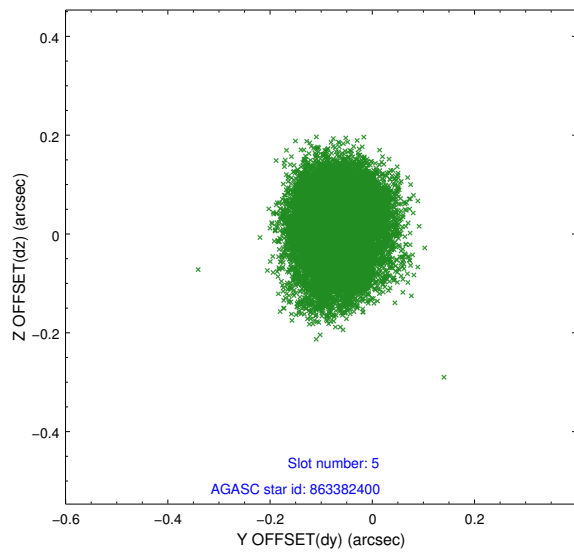
2.4.1 Slot 3



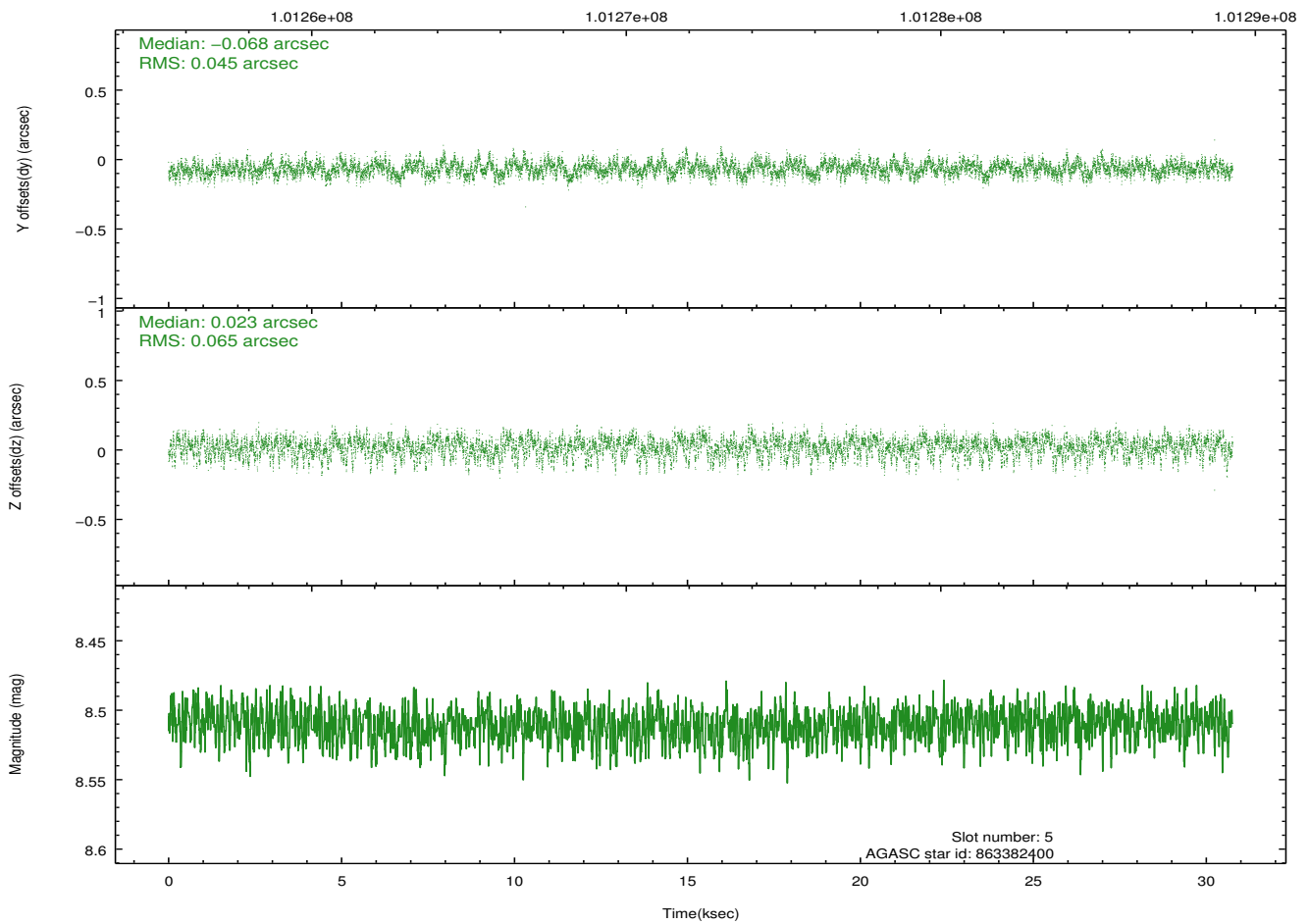
2.4.2 Slot 4



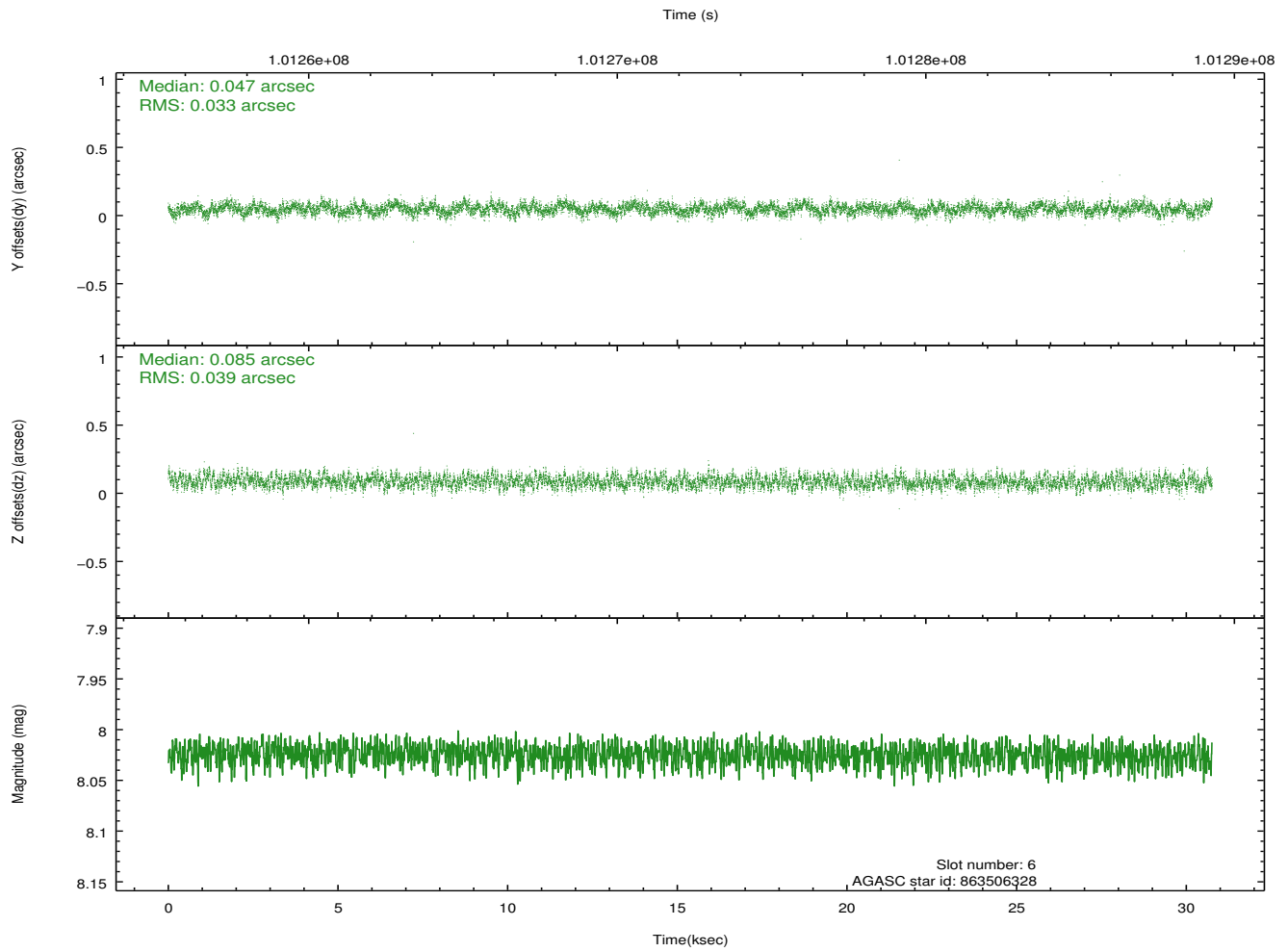
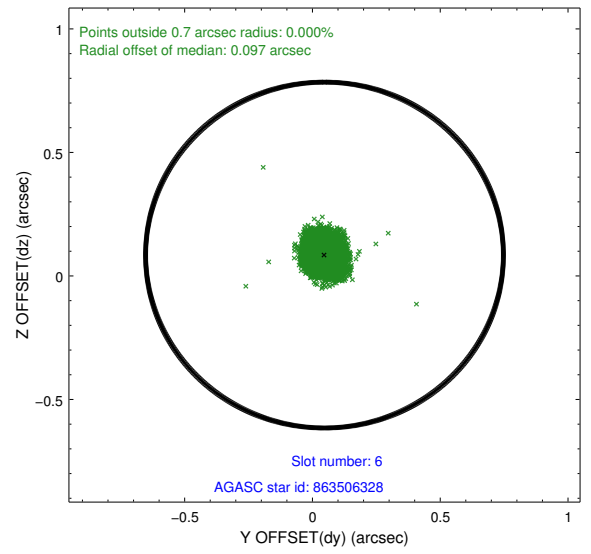
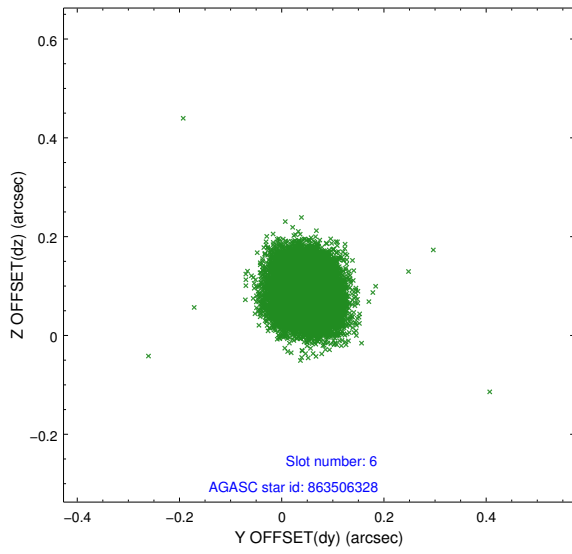
2.4.3 Slot 5



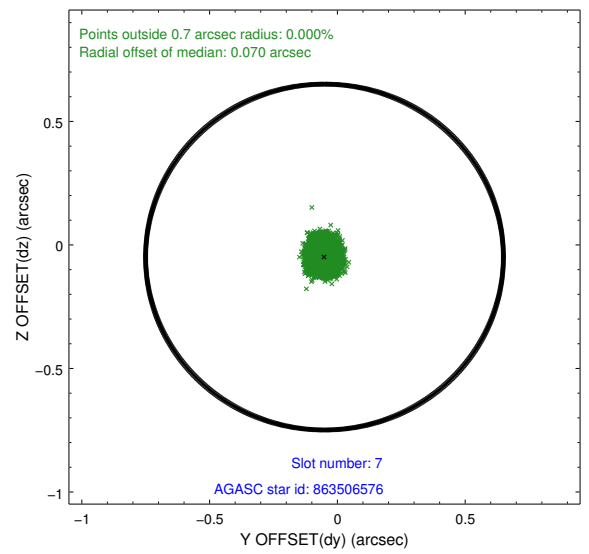
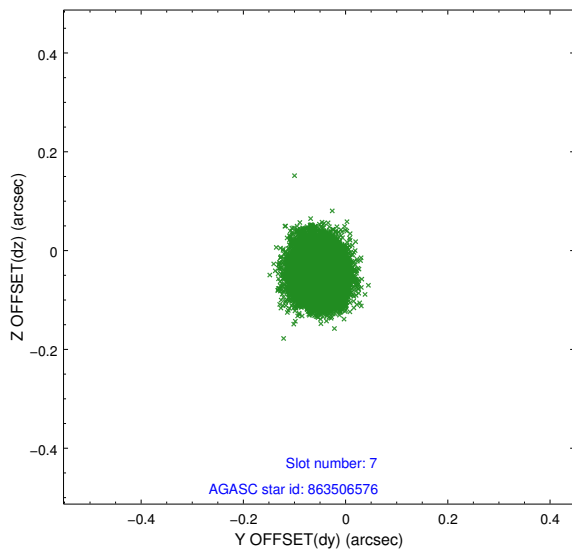
Time (s)



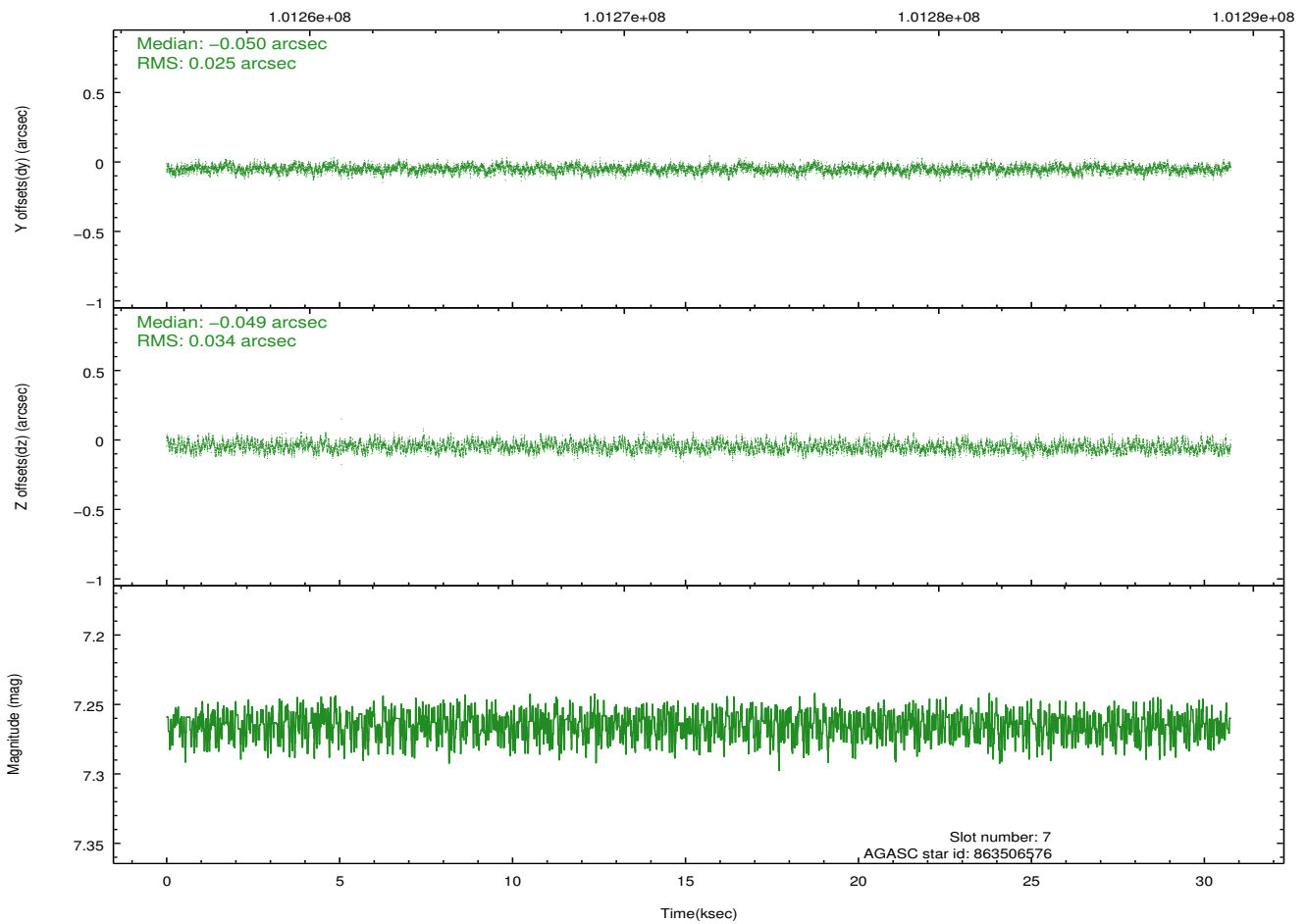
2.4.4 Slot 6



2.4.5 Slot 7

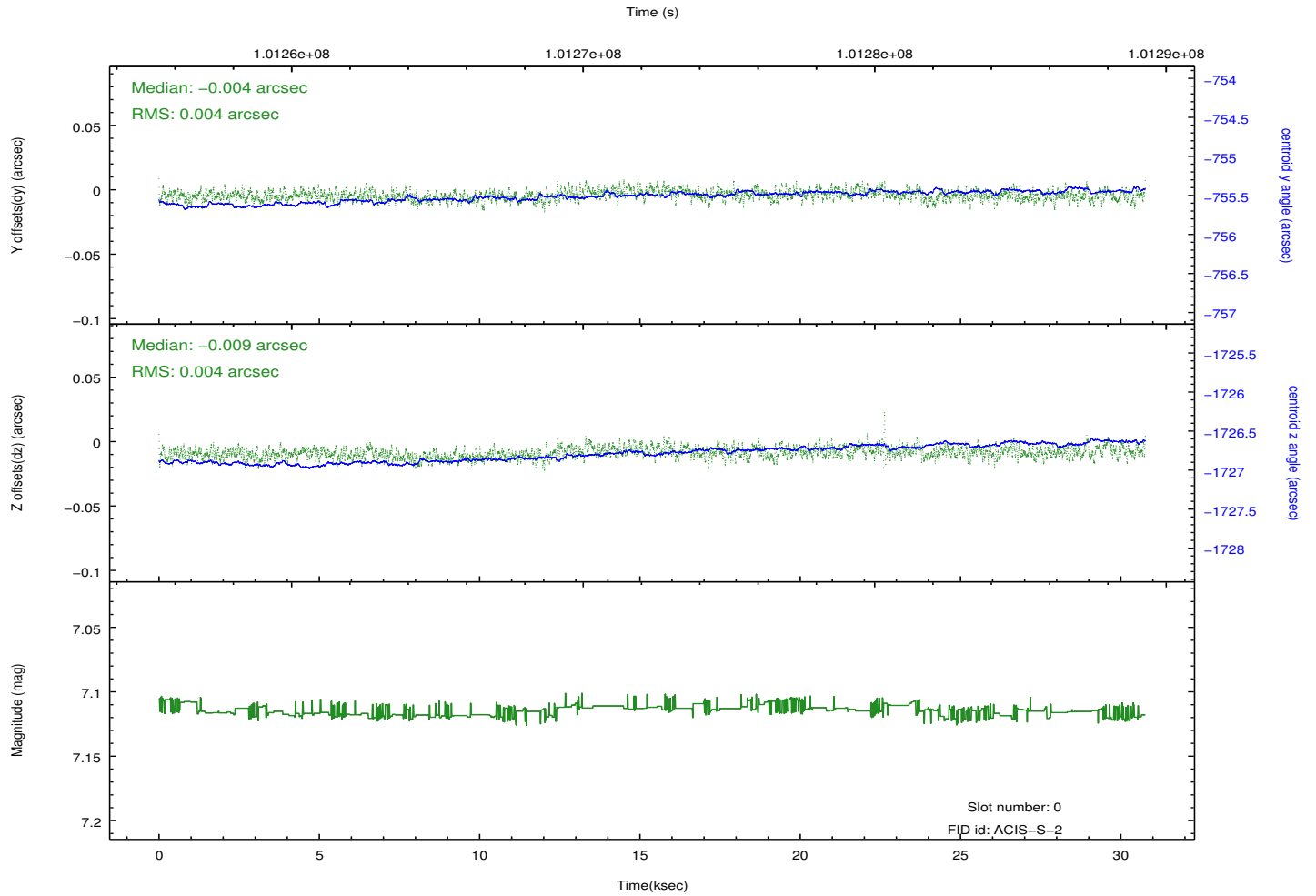
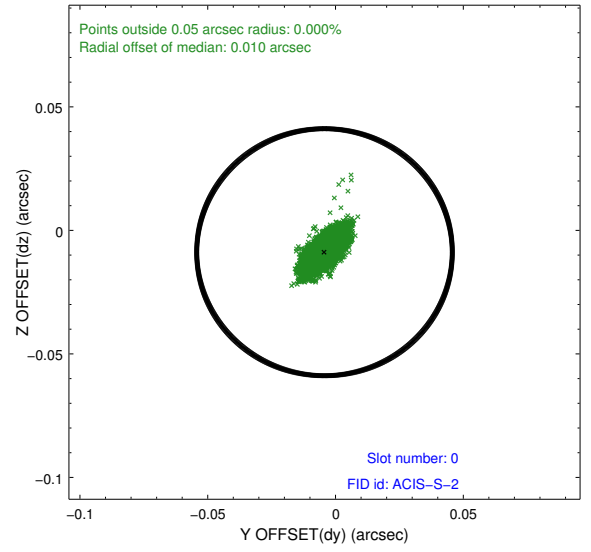
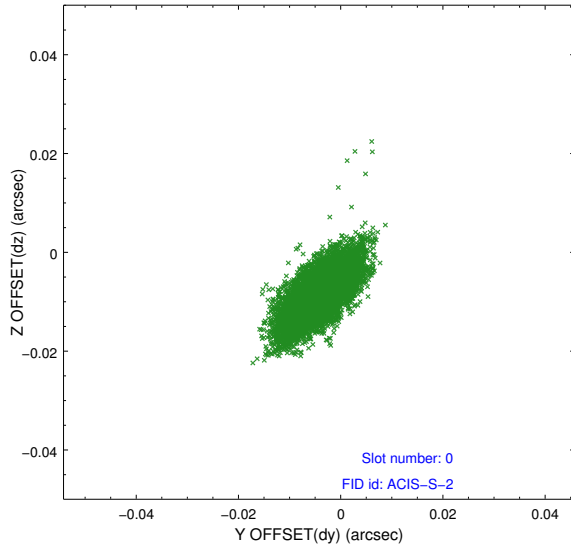


Time (s)

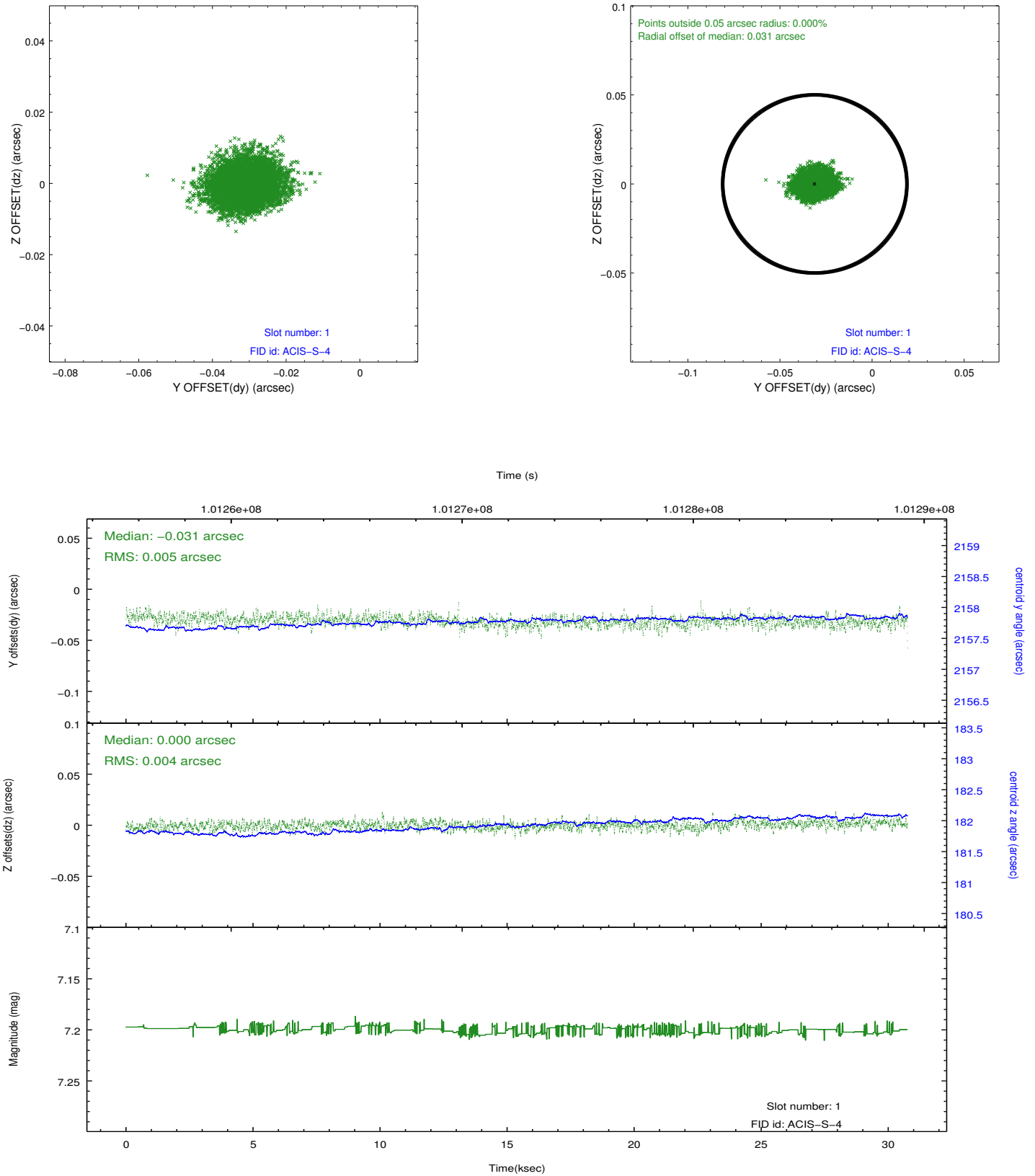


2.5 FID Slots

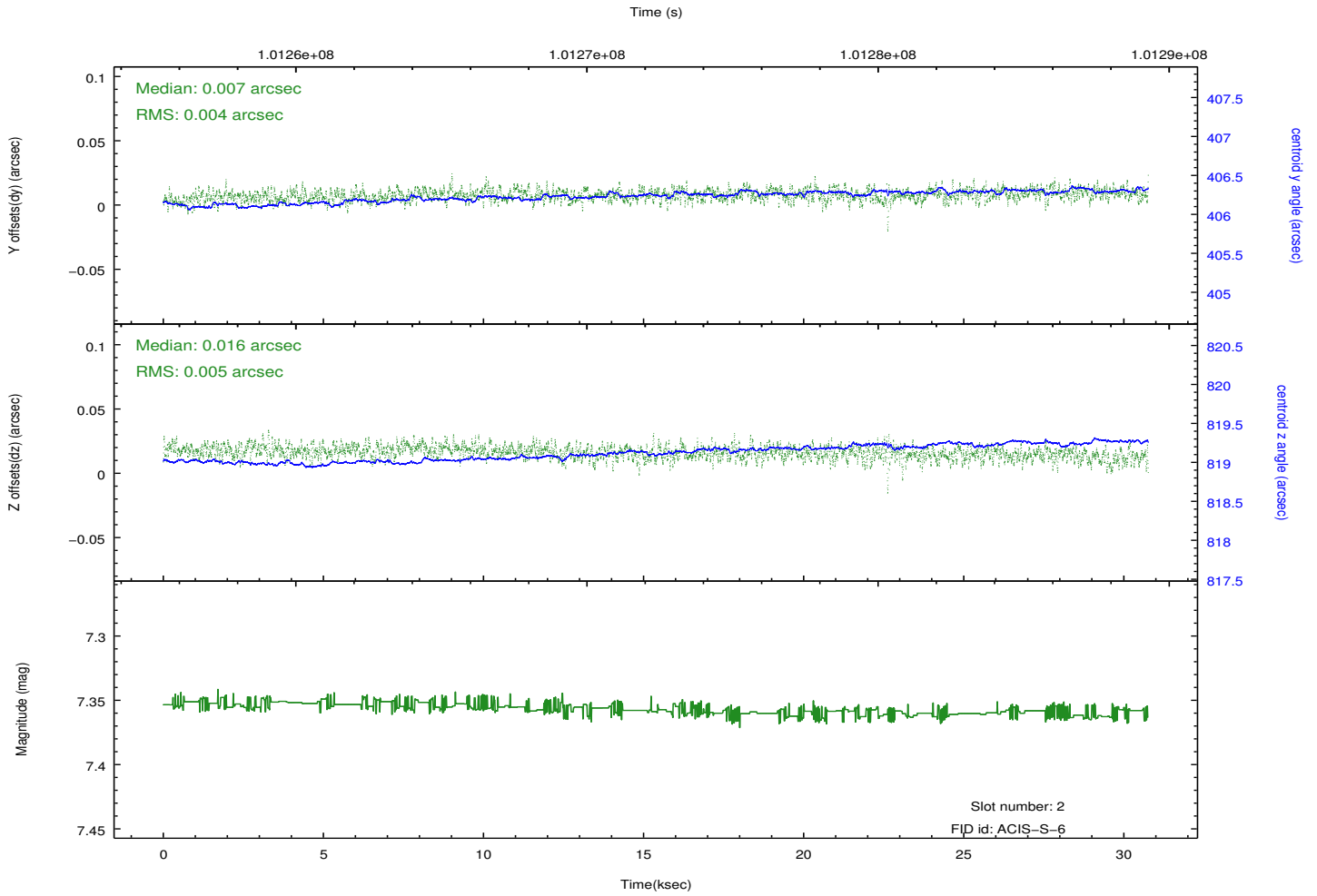
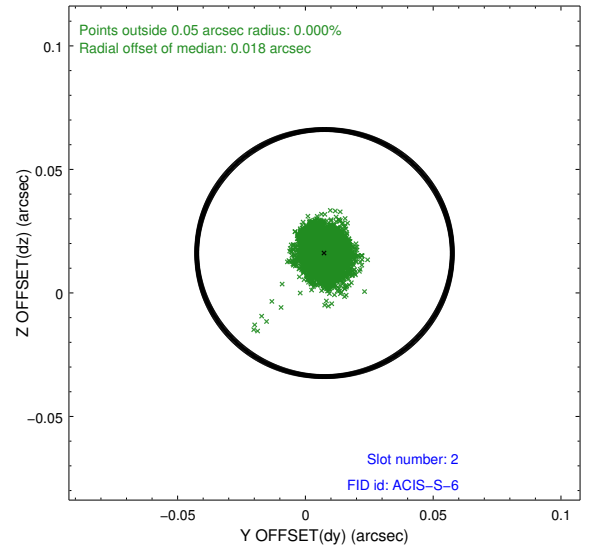
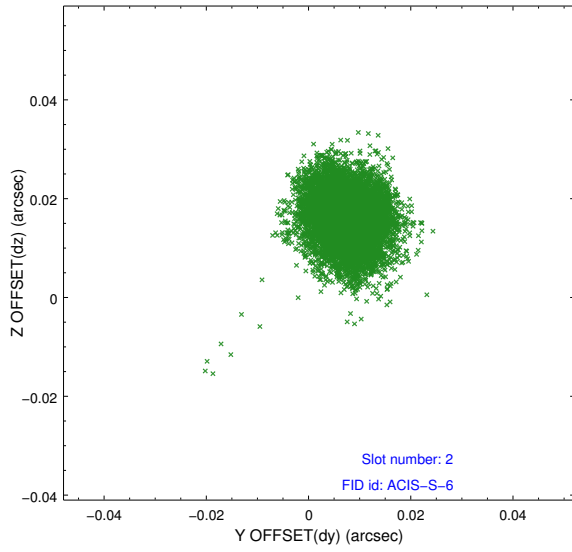
2.5.1 Slot 0



2.5.2 Slot 1



2.5.3 Slot 2



A Summary

A.1 Status

V&V Scientist	Jen Lauer
V&V Date (YYYY-MM-DD)	2012.09.18
V&V Edition	1
V&V Disposition and Status	OK
V&V Charge Time	29.9

A.2 Comments