

V&V Reference Report

L2 ASCDS Version : 8.4.5

Observation 2130 - L2 Version 3
Chandra X-Ray Center

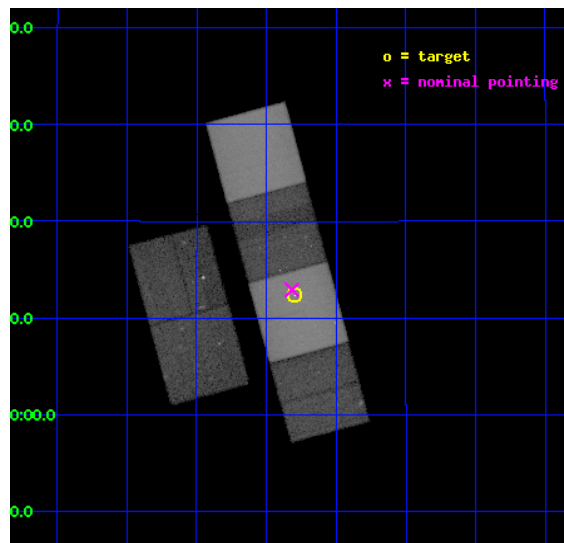
L2 Processing Date : Sep 3 2012

Contents

1	Front	2
2	OBI	3
2.1	OBI	3
2.1.1	Images	3
2.1.2	Bias	3
2.1.3	Parameters	4
2.1.4	Events	4
2.2	Compared Parameters	5
2.3	Aspect	6
2.4	Star Slots	9
2.4.1	Slot 3	9
2.4.2	Slot 4	10
2.4.3	Slot 5	11
2.4.4	Slot 6	12
2.4.5	Slot 7	13
2.5	FID Slots	14
2.5.1	Slot 0	14
2.5.2	Slot 1	15
2.5.3	Slot 2	16
A	Summary	17
A.1	Status	17
A.2	Comments	17

1 Front

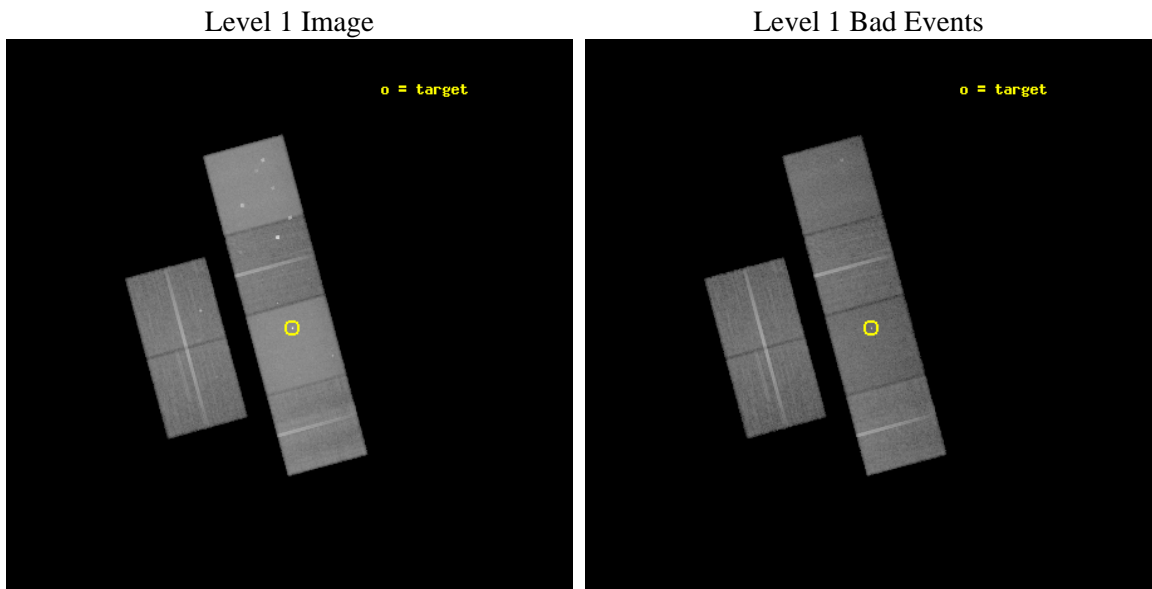
seq_num	700320	Sequence number
obs_id	2130	Observation id
title	INVERSE COMPTON SCATTERING IN QUASAR RADIO LOBES AND THE SPECTRUM OF RELATIVISTIC ELECTRONS	Proposal title
observer	Dr. Gianfranco Brunetti	Principal investigator
object	3C 207	Source name
dtcycle	0	
cycle	P	events from which exps? Prim/Second/Both
ra_targ	130.2	Observer's specified target RA [deg]
dec_targ	13.206389	Observer's specified target Dec [deg]
ra_nom	130.20435747593	Nominal RA [deg]
dec_nom	13.21529052902	Nominal Dec [deg]
roll_nom	74.908017944003	Nominal Roll [deg]
revision	3	Processing version of data
ontime	38022.400035396	Sum of GTIs [s]
livetime	37540.937511807	Livetime [s]
ontime2	38022.400035396	Sum of GTIs [s]
ontime3	38022.400035396	Sum of GTIs [s]
ontime5	38022.400035396	Sum of GTIs [s]
ontime6	38022.400035396	Sum of GTIs [s]
ontime7	38022.400035396	Sum of GTIs [s]
ontime8	38022.400035396	Sum of GTIs [s]
l2events	673962	Number of level 2 events



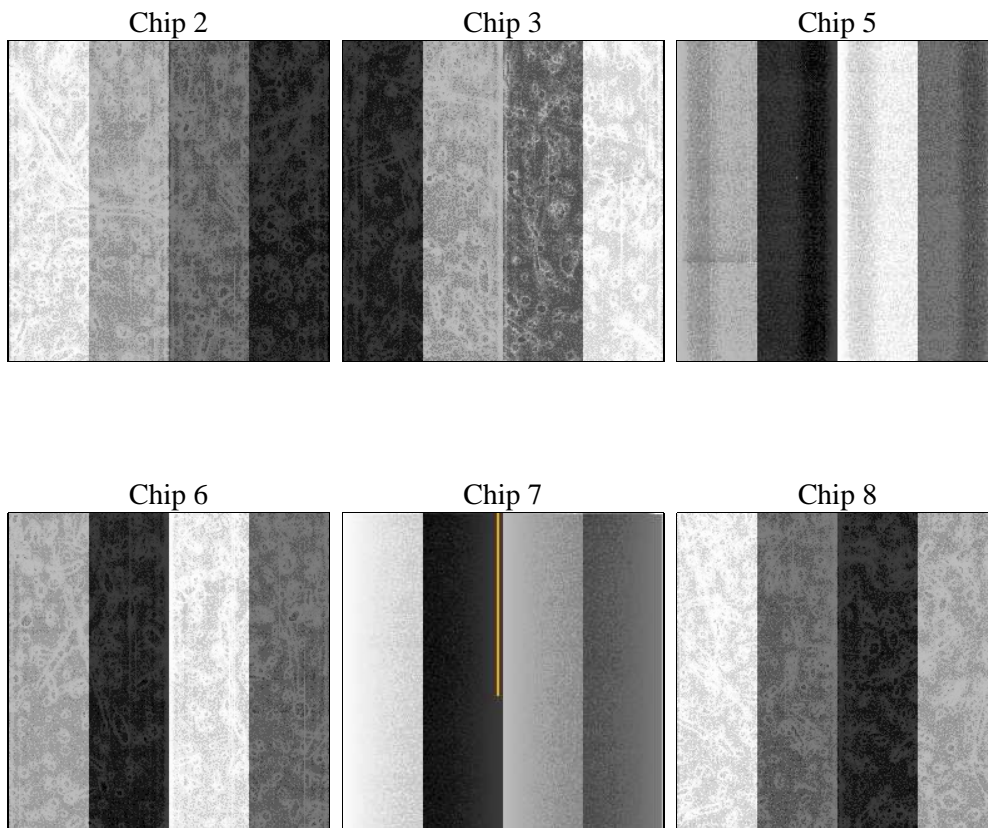
2 OBI

2.1 OBI

2.1.1 Images



2.1.2 Bias



2.1.3 Parameters

obi_num	0	Obi number	sched_exp_time	38000.000000	[s] Scheduled observation exposure time
ascdsver	8.4.5	Processing system revision	ontime	38022.400035396	Sum of GTIs [s]
caldbver	4.5.1.1	 	ontime2	38022.400035396	Sum of GTIs [s]
date	2012-09-03T04:17:00	Date and time of file creation	ontime3	38022.400035396	Sum of GTIs [s]
revision	3	Processing version of data	ontime5	38022.400035396	Sum of GTIs [s]
			ontime6	38022.400035396	Sum of GTIs [s]
			ontime7	38022.400035396	Sum of GTIs [s]
			ontime8	38022.400035396	Sum of GTIs [s]
			l1events	1981545	Number of level 1 events

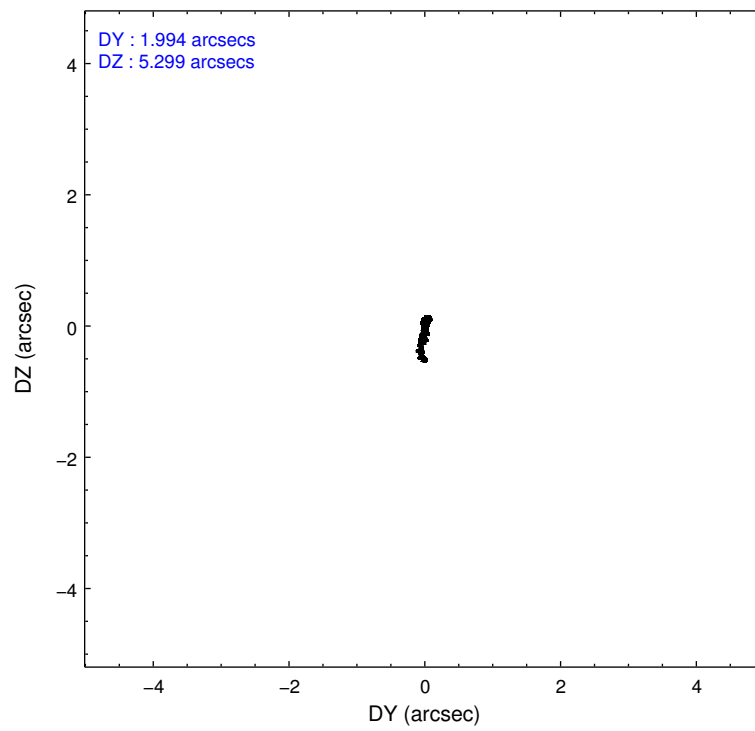
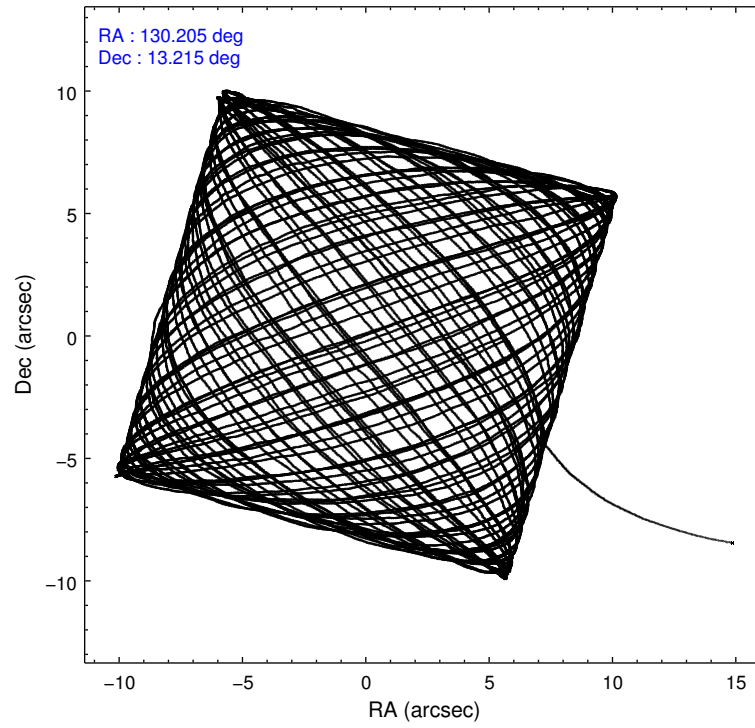
2.1.4 Events

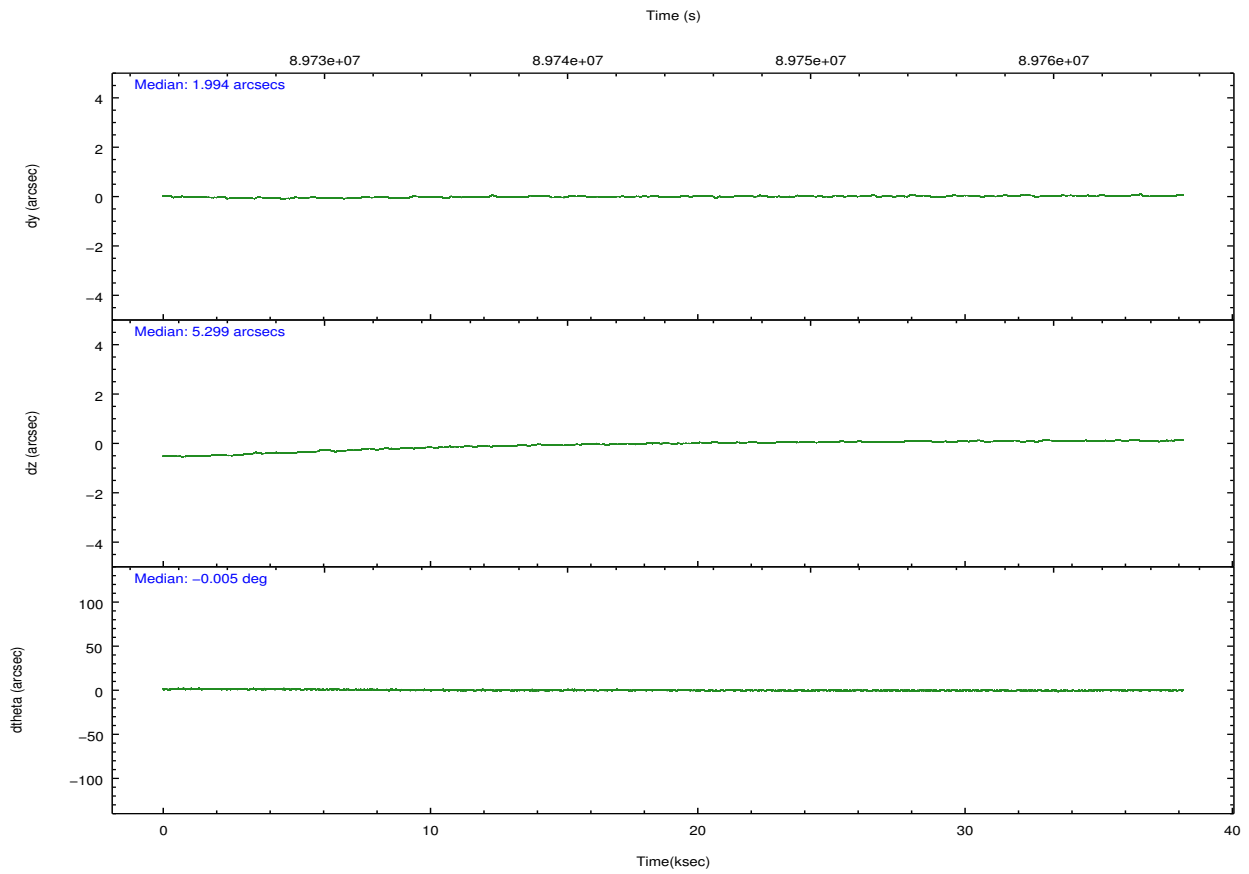
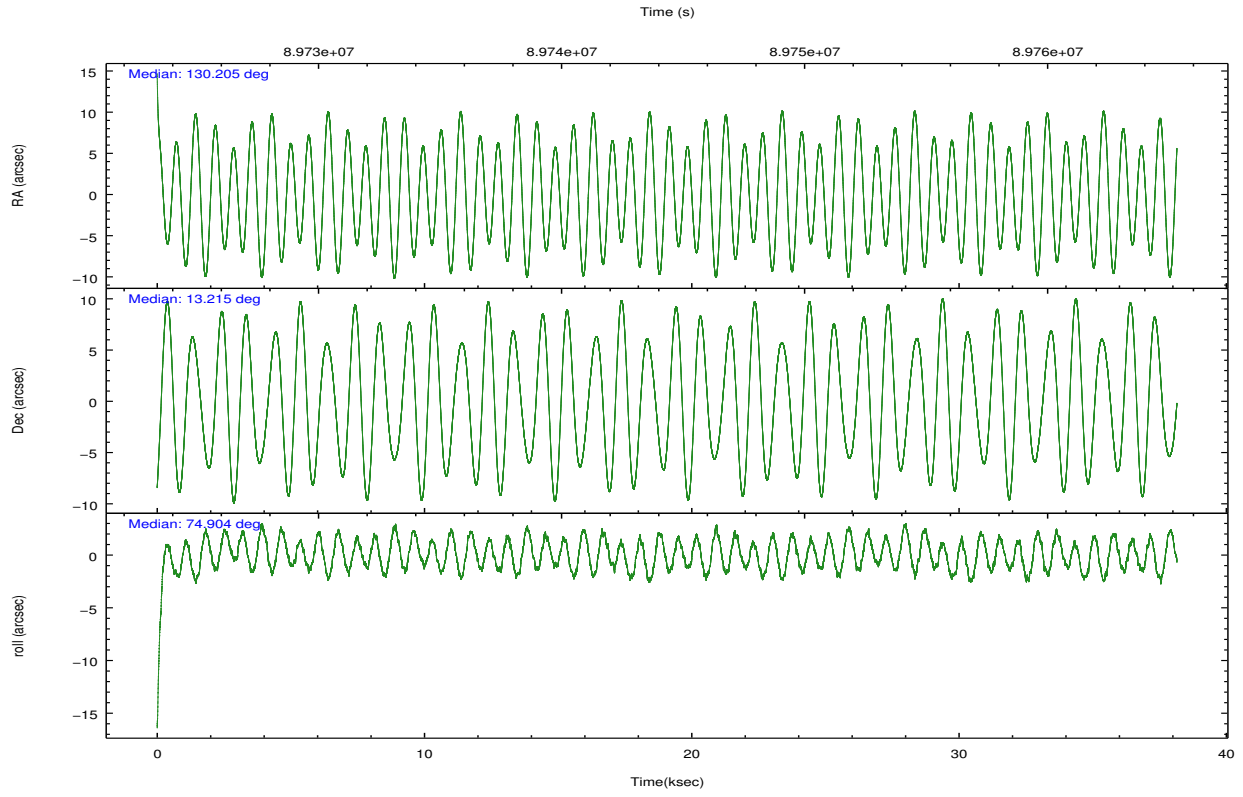
	ccd 2	ccd 3	ccd 5	ccd 6	ccd 7	ccd 8		ccd 2	ccd 3	ccd 5	ccd 6	ccd 7	ccd 8
level 1 events	251465	237870	457005	265309	441563	328333	grade 0 events	18894	17389	43577	35616	30955	38638
rejected events	213508	201298	182605	208595	171203	233298		7%	7%	9%	13%	7%	11%
rejected %	84%	84%	39%	78%	38%	71%	grade 1 events	143	132	744	241	417	267
								0%	0%	0%	0%	0%	0%
							grade 2 events	8151	8177	75265	9158	50416	17601
								3%	3%	16%	3%	11%	5%
							grade 3 events	2508	2537	15457	2854	22757	10930
								0%	1%	3%	1%	5%	3%
							grade 4 events	2635	2665	15142	2855	22797	10150
								1%	1%	3%	1%	5%	3%
							grade 5 events	7732	8229	25886	9361	28595	11894
								3%	3%	5%	3%	6%	3%
							grade 6 events	5781	5813	125220	6255	143737	17736
								2%	2%	27%	2%	32%	5%
							grade 7 events	205621	192928	155714	198969	141889	221117
								81%	81%	34%	74%	32%	67%

2.2 Compared Parameters

Parameter	Planned	Actual	Parameter	Planned	Actual
Instrument	ACIS	ACIS	Obspar format version number	7	7
Detector	ACIS-235678	ACIS-235678	Obspar file type	PREDICTED	ACTUAL
Grating	NONE	NONE	Obspar update status	NONE	UPDATED
Data mode	FAINT	FAINT	Number of optional ACIS chips dropped	0	0
Observation mode	POINTING	POINTING	On-chip summing requested	N	N
[deg] Pointing RA	130.211787	130.2043574759291	Subarray requested	NONE	NONE
[deg] Pointing Dec	13.188926	13.21529052902024	Alternating exposures requested	N	N
[deg] Pointing Roll	74.749696	74.90801794400309	[s] Primary exposure time	0.000000	3.2
[mm] SIM focus pos	-0.684267	-0.6828225247311905			
[mm] SIM defocus	0	0.001444936568705701			
[mm] SIM translation stage pos	-190.132523	-190.145094680475			
[mm] SIM translation stage offset	0	0.01257209746719923			
[s] Observation start time (MET)	89725415.184000	89724419.48658399			
Observation start date	2000-11-04T11:42:31	2000-11-04T11:26:59			
[s] Observation end time (MET)	89763415.184000	89763957.32557701			
Observation end date	2000-11-04T22:15:51	2000-11-04T22:25:57			
Read mode	TIMED	TIMED			

2.3 Aspect



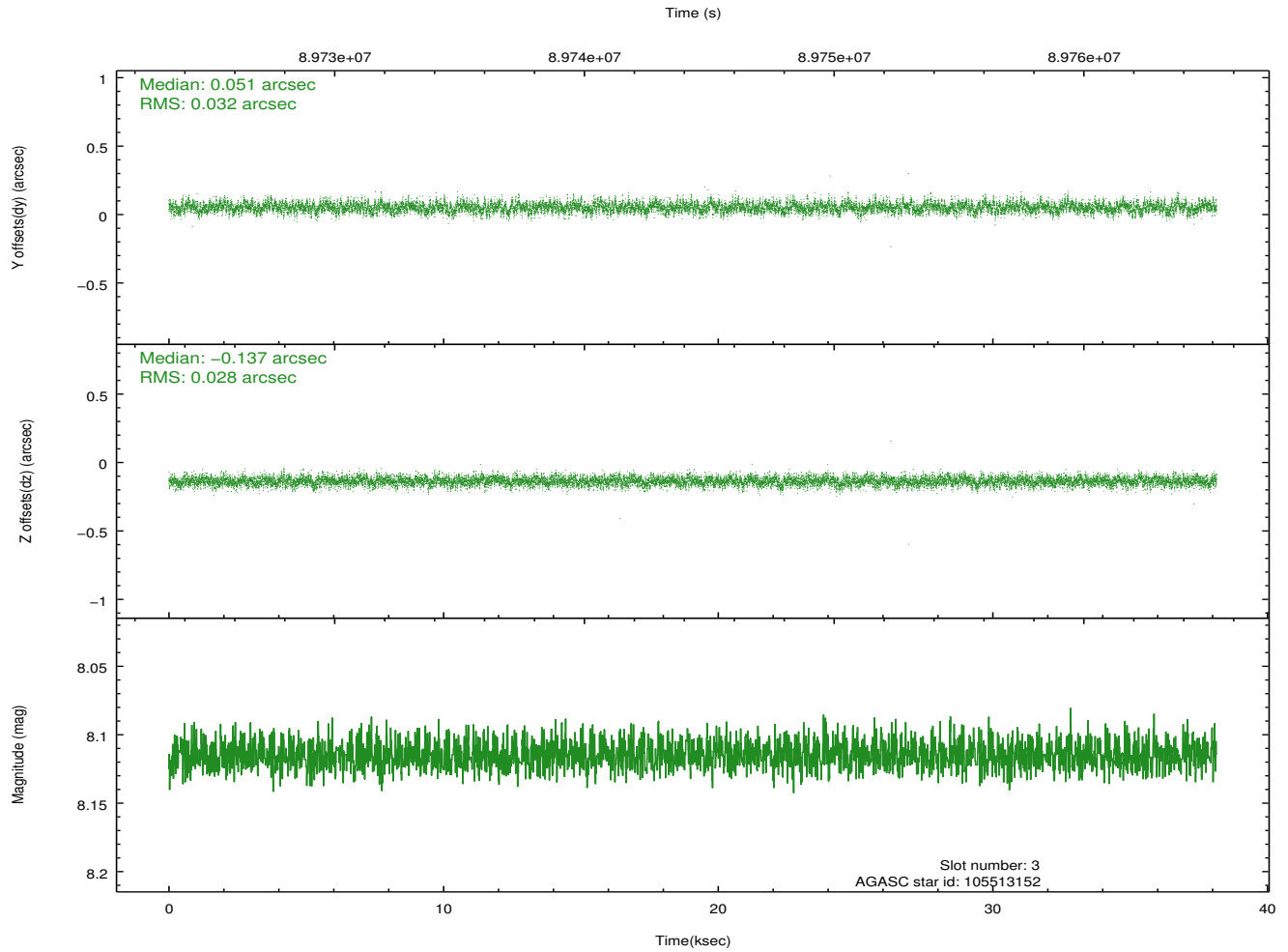
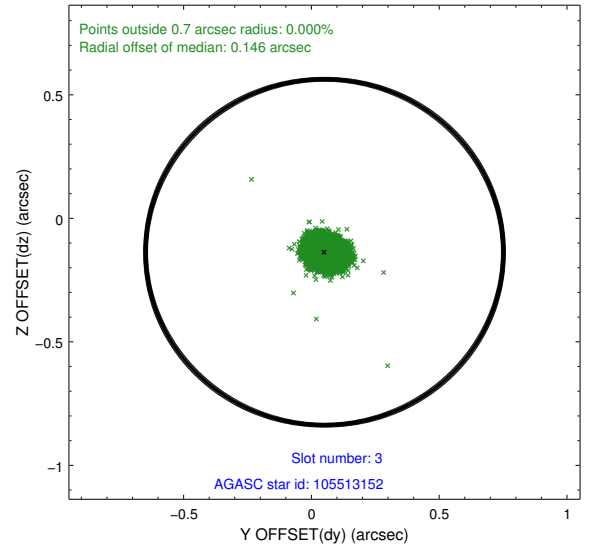
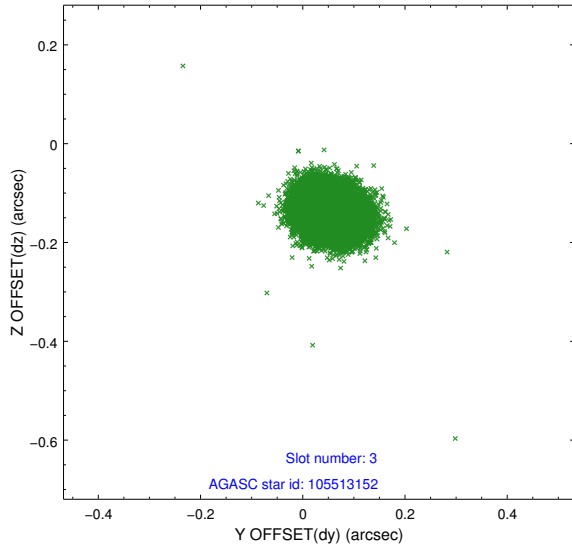


Slot Statistics

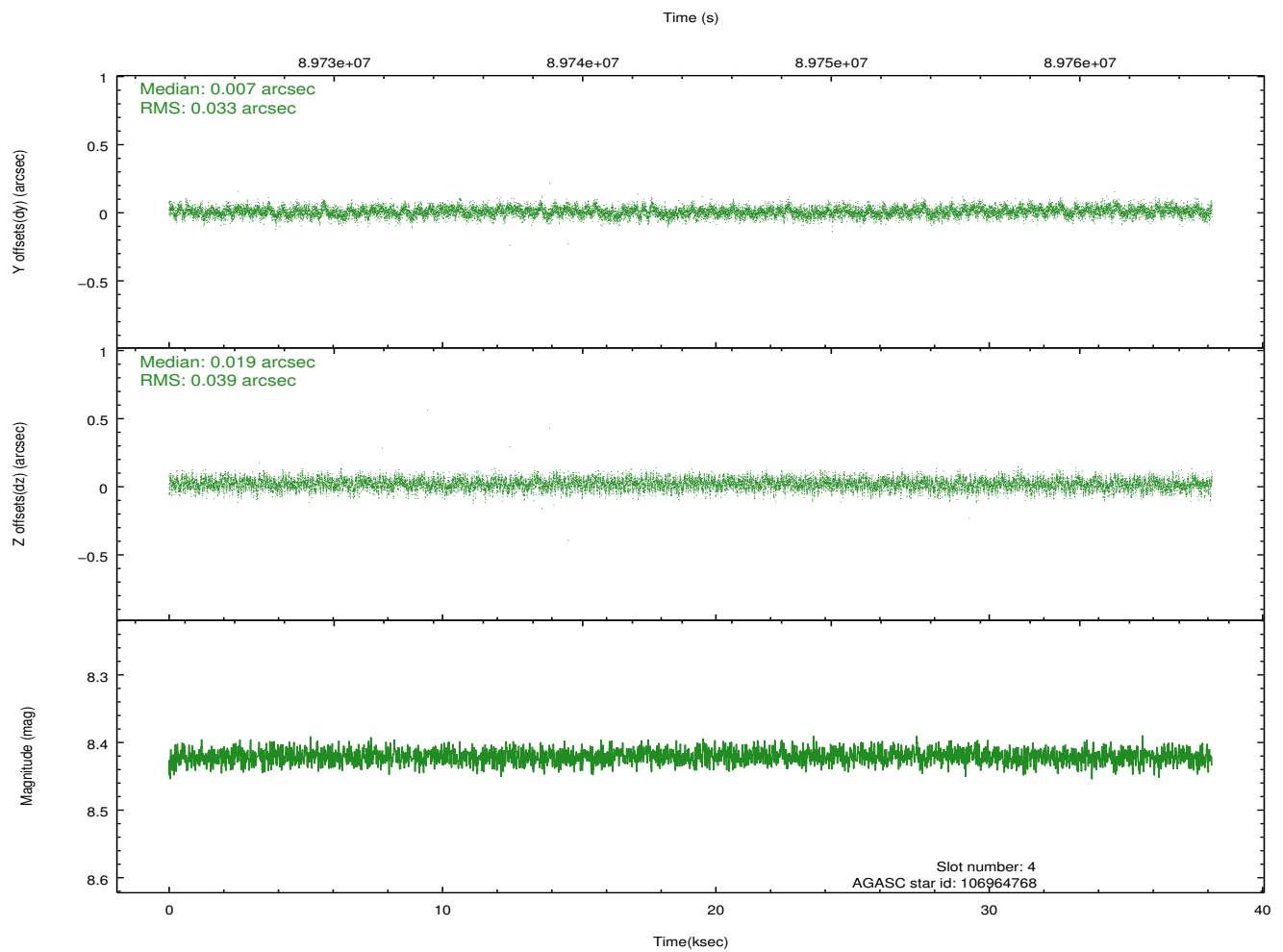
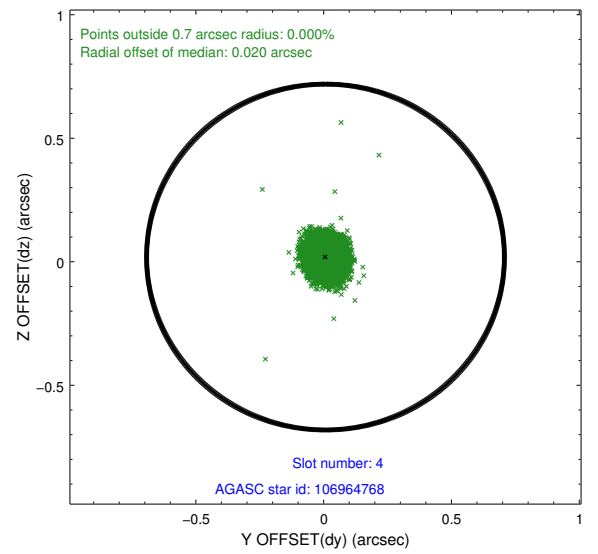
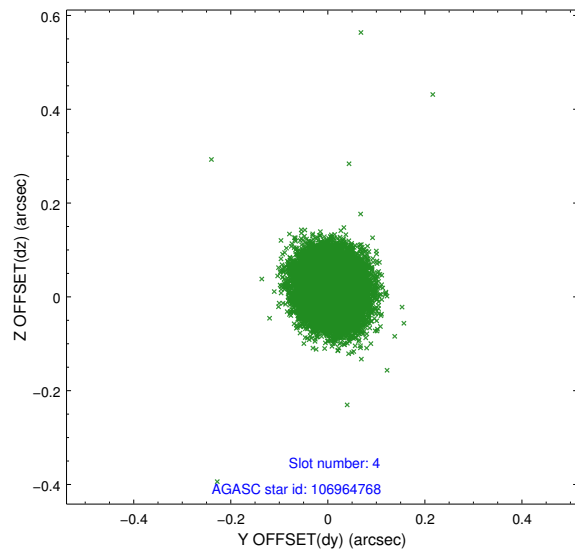
slot	status	id	mag	n_pts	med_dy	med_dz	dr1	dr2	ra	dec	mean_y	mean_z
0	FID	ACIS-S-2	7.11	9304	-0.046	-0.008	0.007	0.012	0.000000	0.000000	-754.62	-1726.26
1	FID	ACIS-S-4	7.20	9304	-0.003	0.024	0.006	0.010	0.000000	0.000000	2158.66	182.28
2	FID	ACIS-S-5	7.24	9305	0.017	-0.007	0.007	0.012	0.000000	0.000000	-1807.40	175.88
3	GUIDE	105513152	8.11	18605	0.051	-0.137	0.045	0.074	129.815846	12.960374	-1158.66	1124.39
4	GUIDE	106964768	8.42	18609	0.007	0.019	0.054	0.087	130.319307	13.200393	138.61	-352.10
5	GUIDE	106965360	8.73	18607	0.112	0.204	0.076	0.119	130.587812	12.638213	-1564.54	-1795.09
6	GUIDE	106962968	8.87	18608	0.038	0.099	0.067	0.107	130.463087	13.055809	-230.47	-975.71
7	GUIDE	106043672	9.03	18596	-0.208	-0.181	0.065	0.105	129.948191	13.729914	1636.29	1402.21

2.4 Star Slots

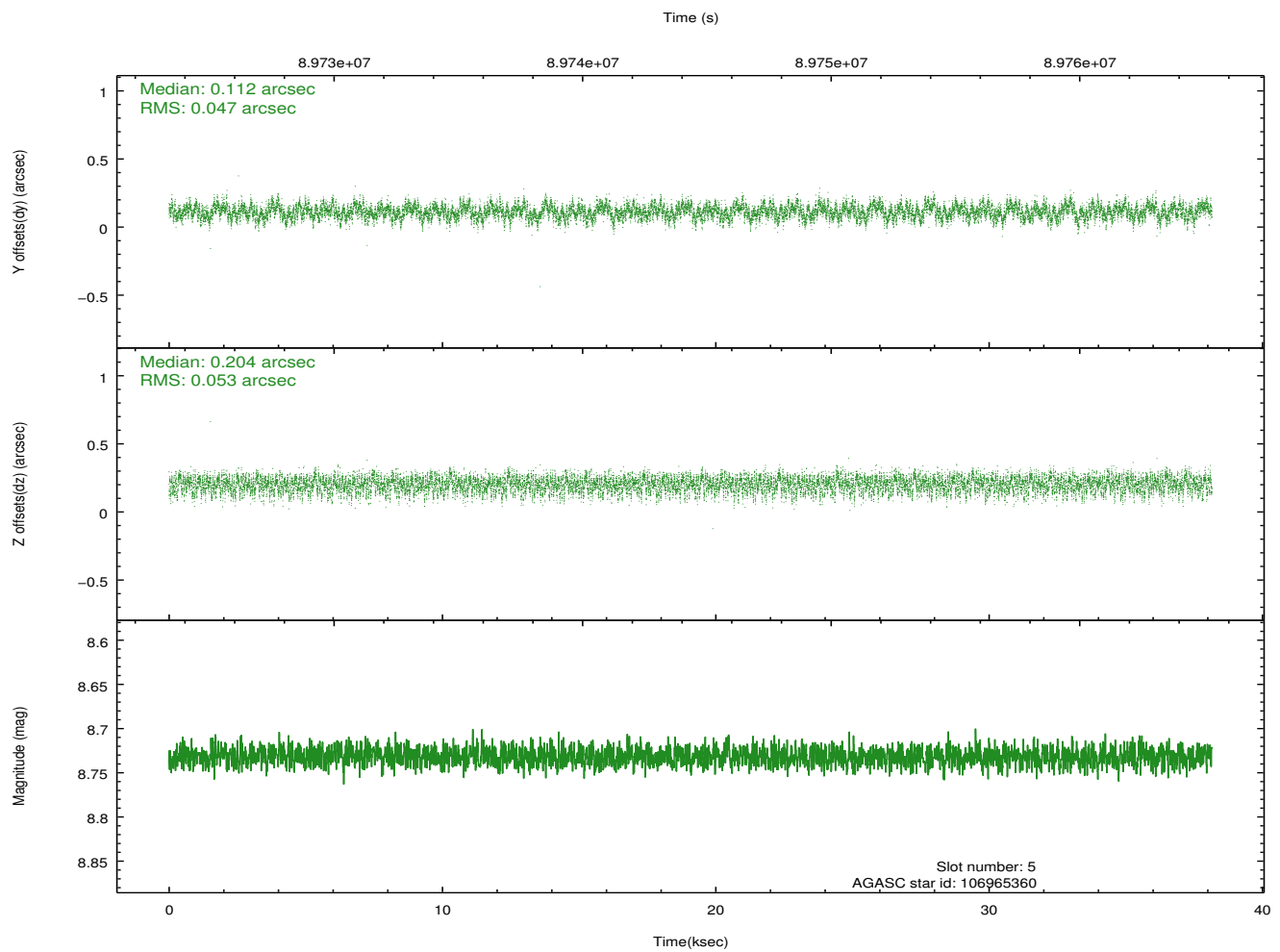
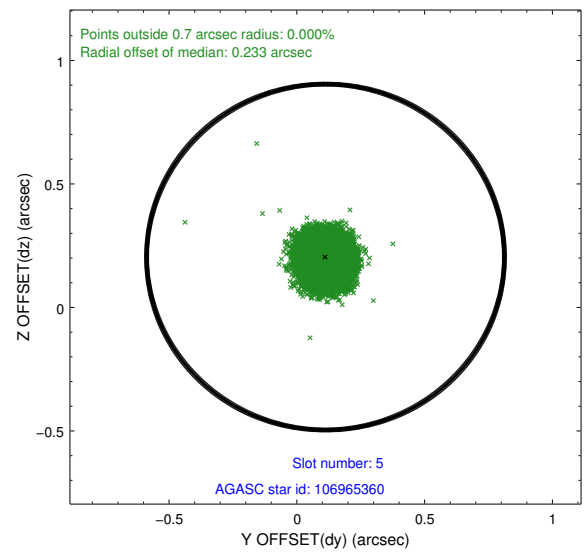
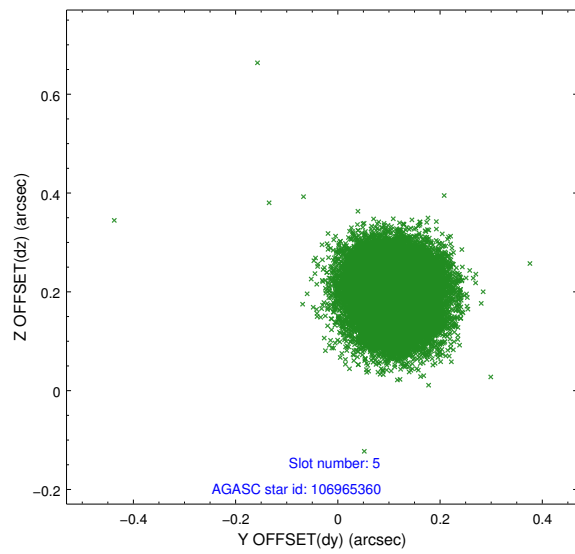
2.4.1 Slot 3



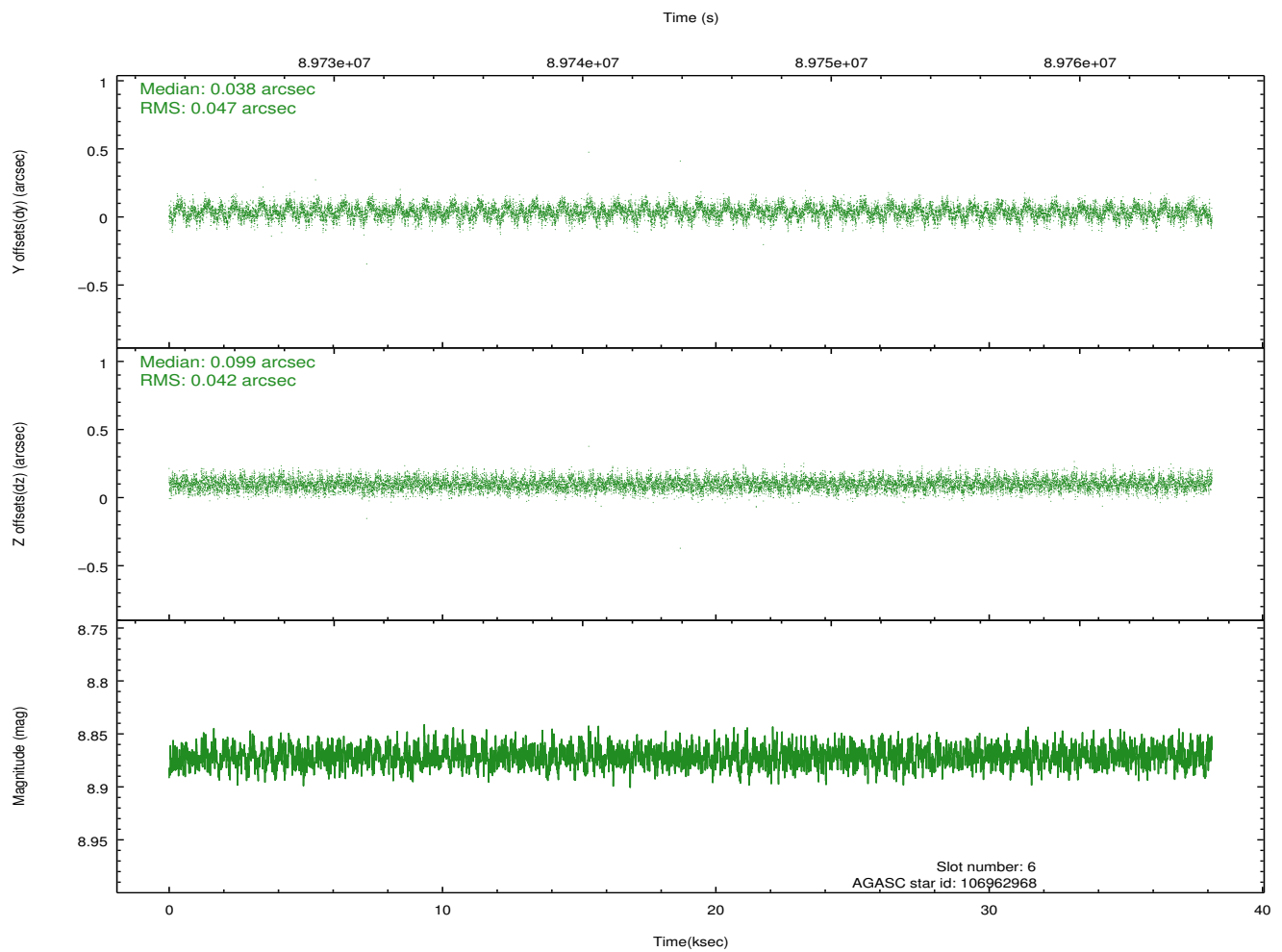
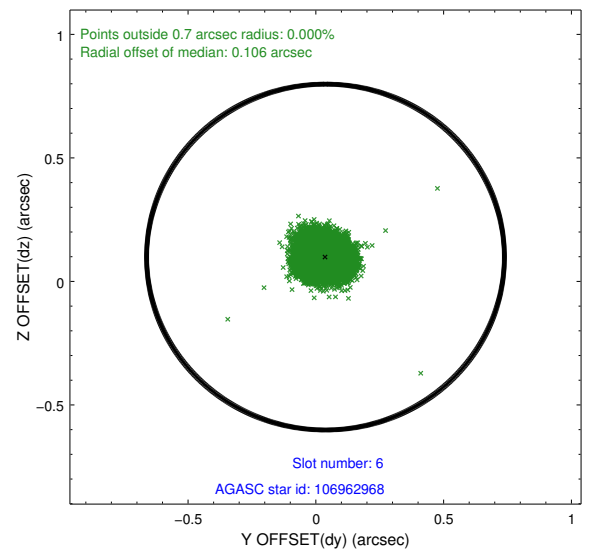
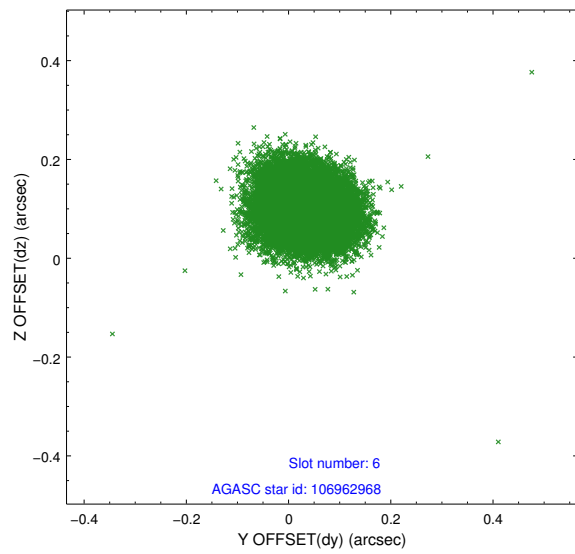
2.4.2 Slot 4



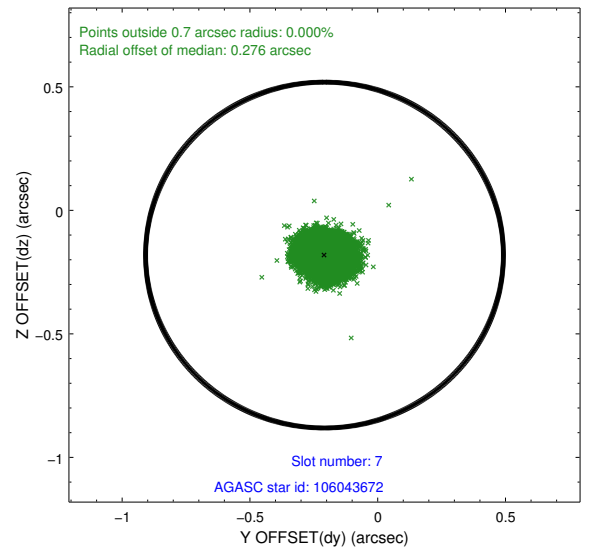
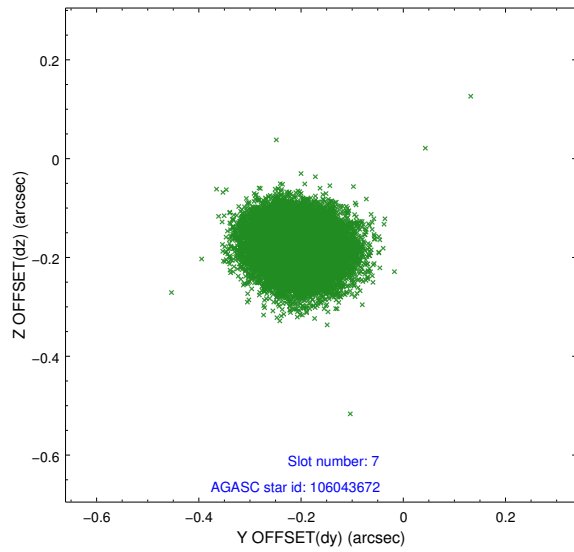
2.4.3 Slot 5



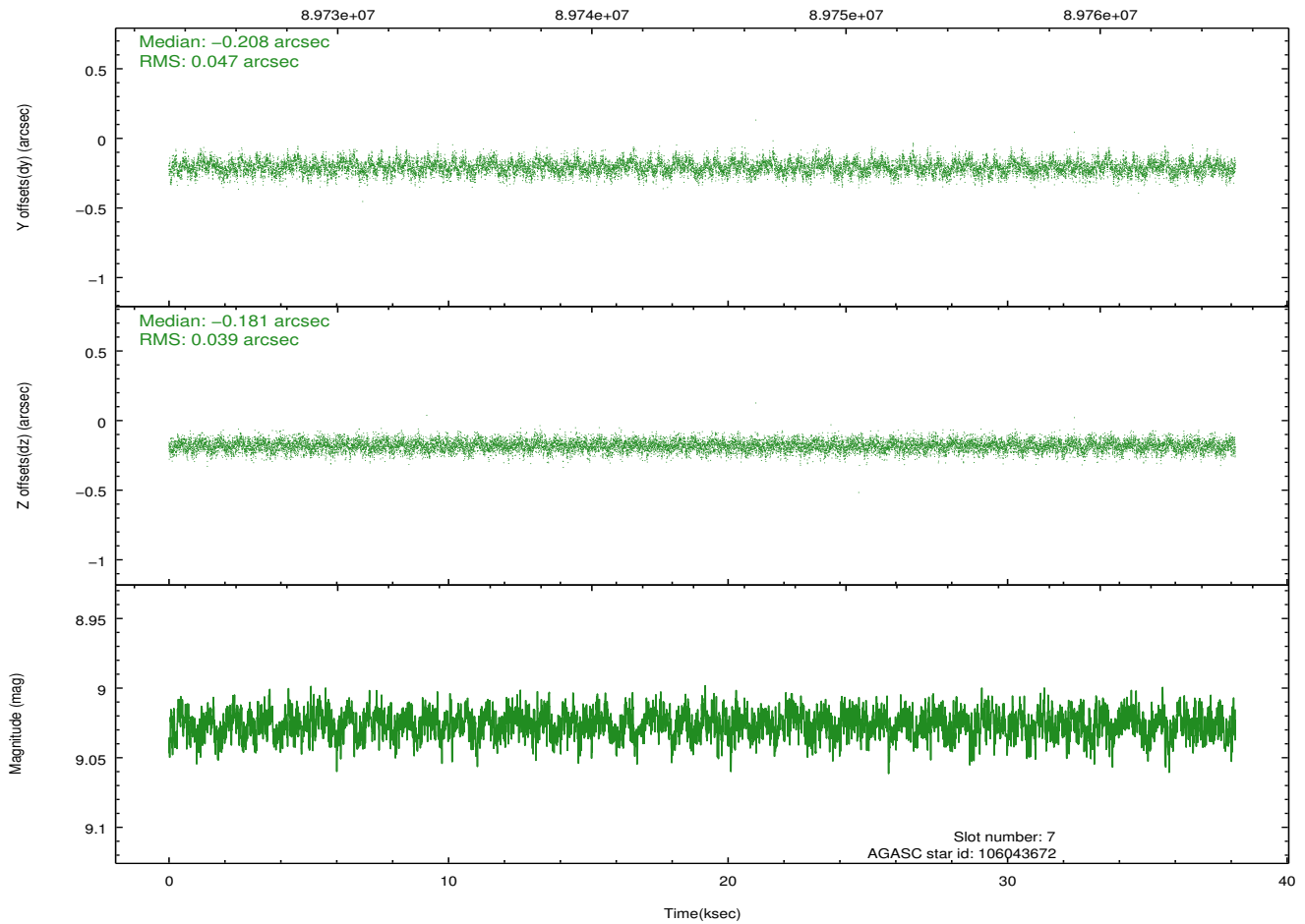
2.4.4 Slot 6



2.4.5 Slot 7

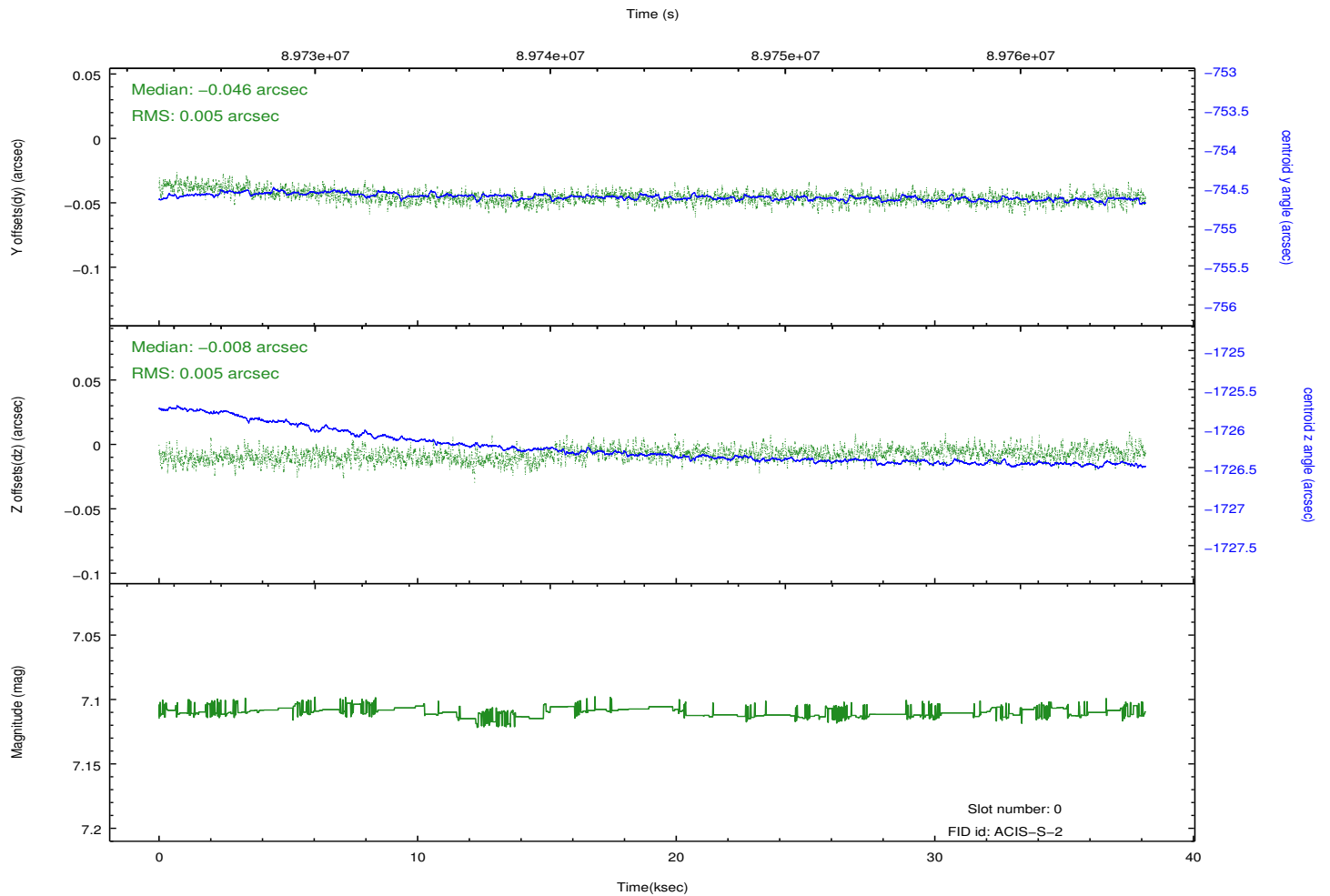
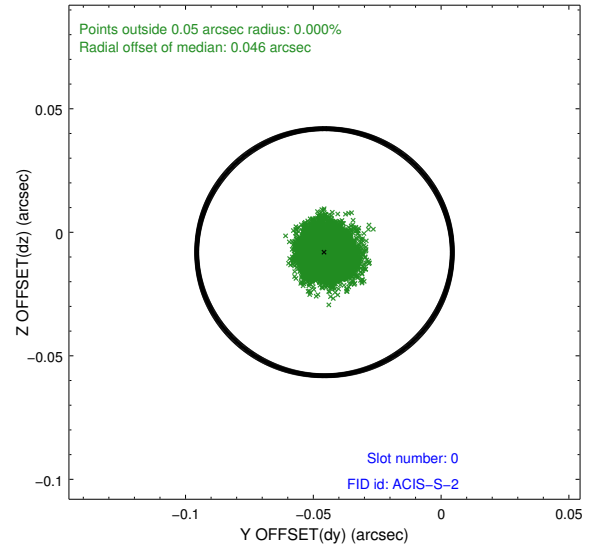
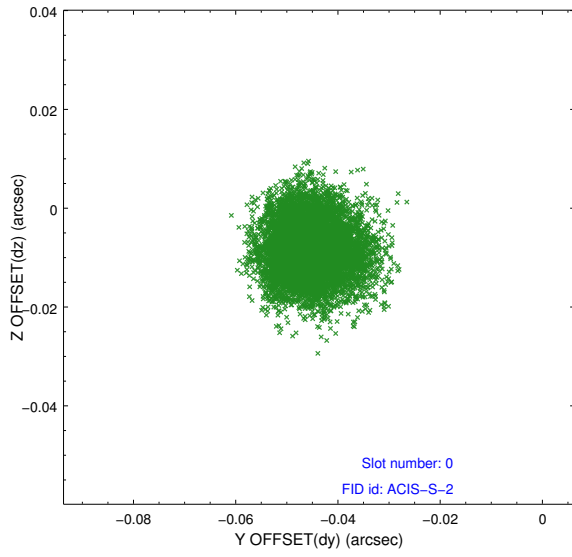


Time (s)

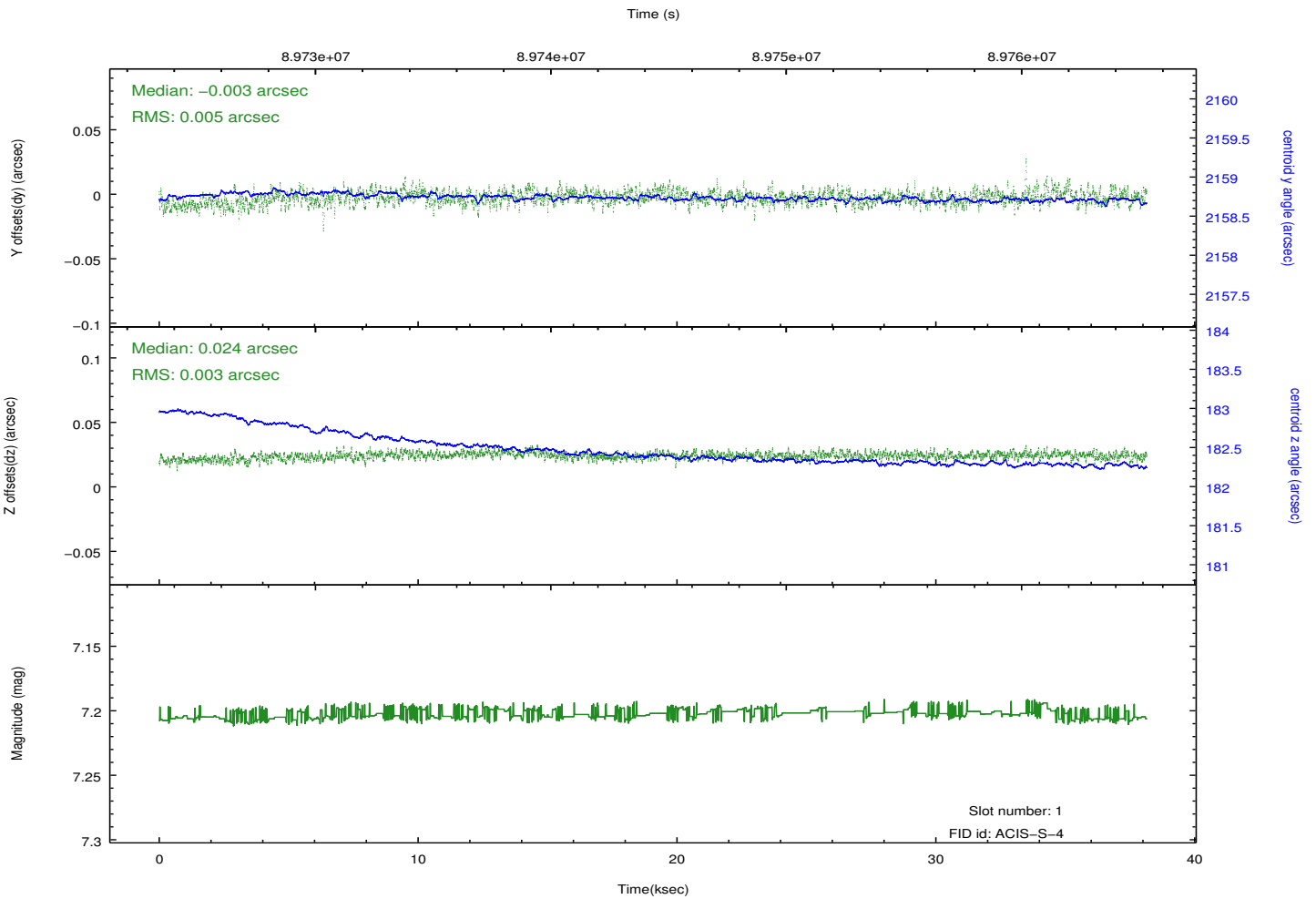
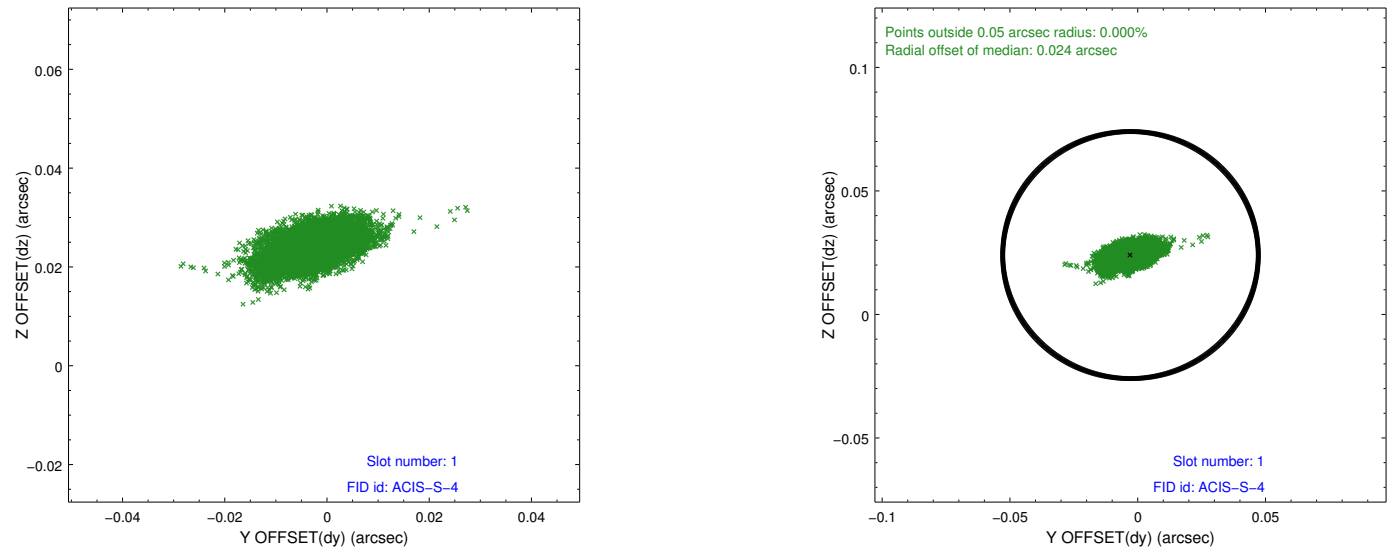


2.5 FID Slots

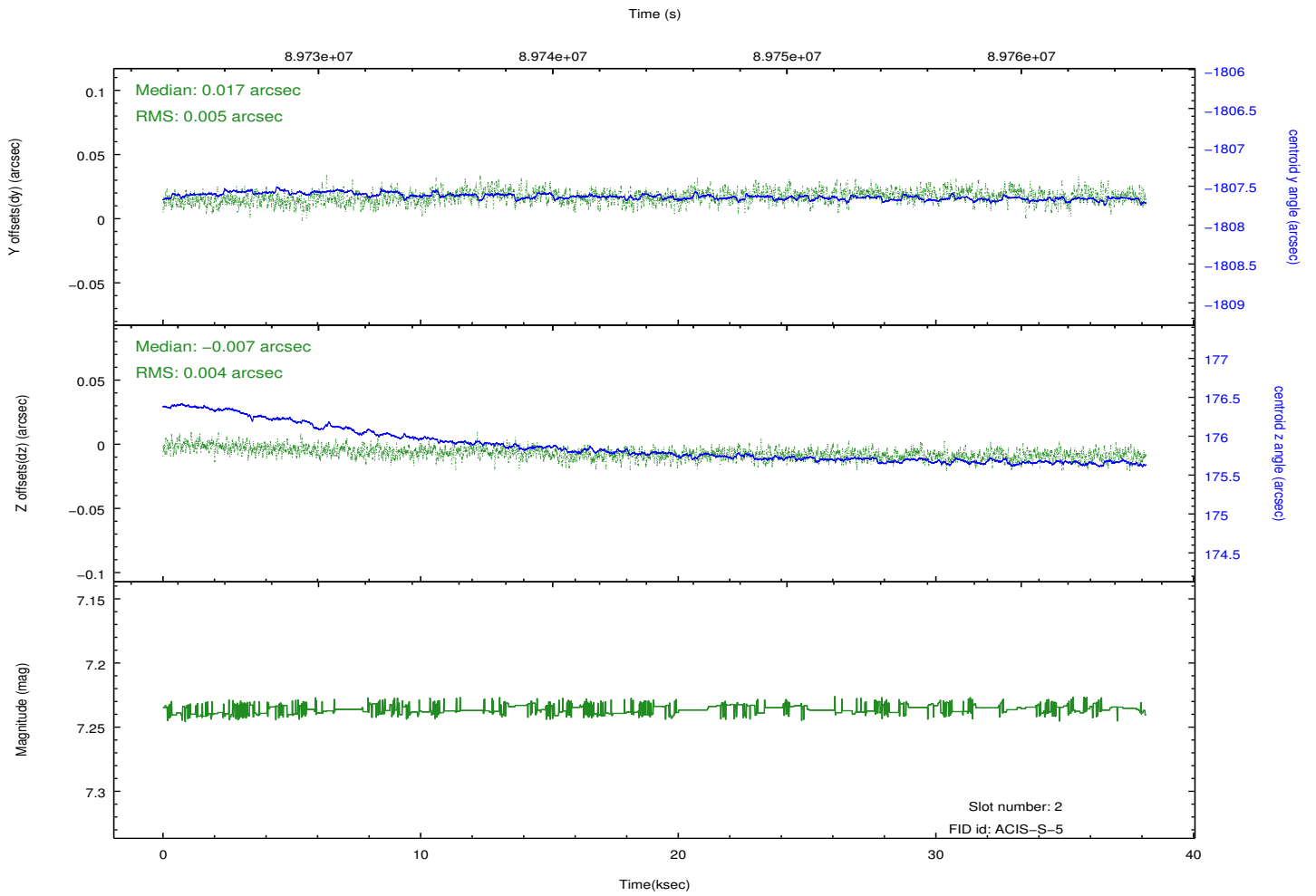
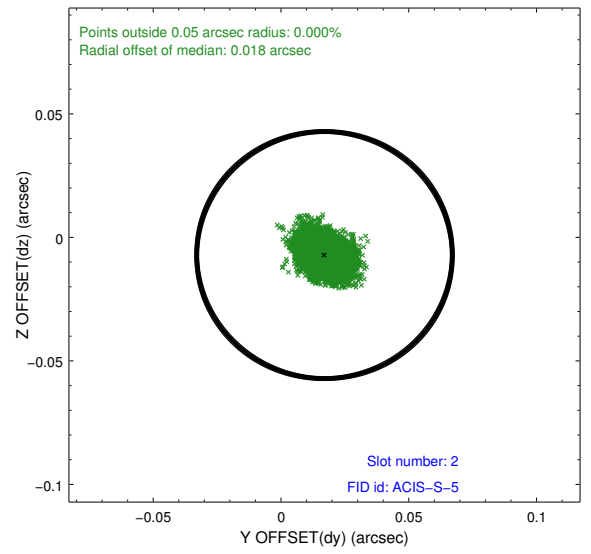
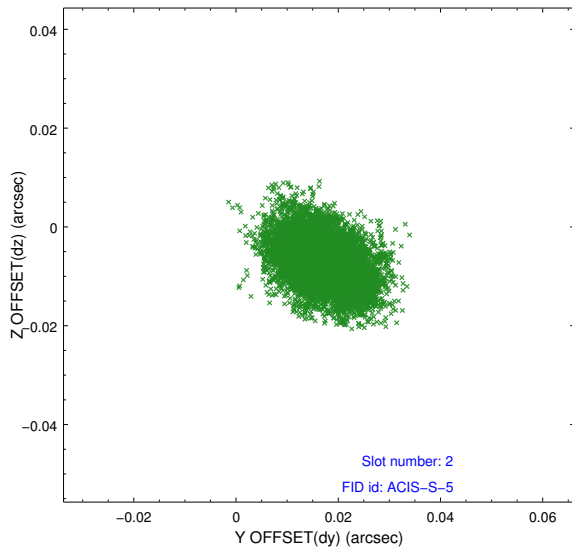
2.5.1 Slot 0



2.5.2 Slot 1



2.5.3 Slot 2



A Summary

A.1 Status

V&V Scientist	Jen Lauer
V&V Date (YYYY-MM-DD)	2012.09.11
V&V Edition	1
V&V Disposition and Status	OK
V&V Charge Time	38.025

A.2 Comments