

V&V Reference Report

L2 ASCDS Version : 8.4.5

Observation 2200 - L2 Version 3
Chandra X-Ray Center

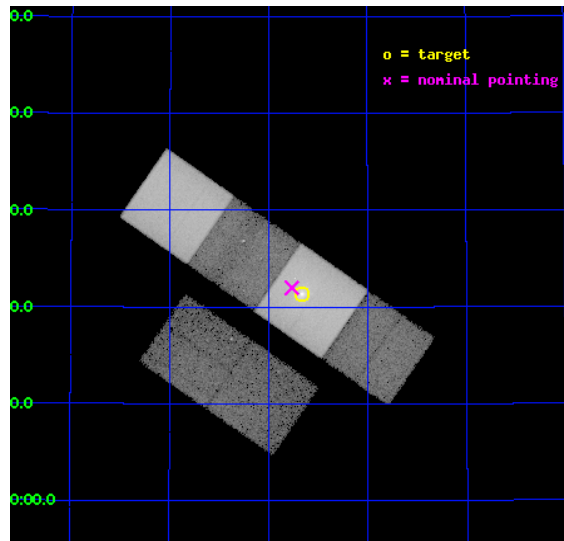
L2 Processing Date : Sep 2 2012

Contents

1	Front	2
2	OBI	3
2.1	OBI	3
2.1.1	Images	3
2.1.2	Bias	3
2.1.3	Parameters	4
2.1.4	Events	4
2.2	Compared Parameters	5
2.3	Aspect	6
2.4	Star Slots	9
2.4.1	Slot 3	9
2.4.2	Slot 4	10
2.4.3	Slot 5	11
2.4.4	Slot 6	12
2.4.5	Slot 7	13
2.5	FID Slots	14
2.5.1	Slot 0	14
2.5.2	Slot 1	15
2.5.3	Slot 2	16
A	Summary	17
A.1	Status	17
A.2	Comments	17

1 Front

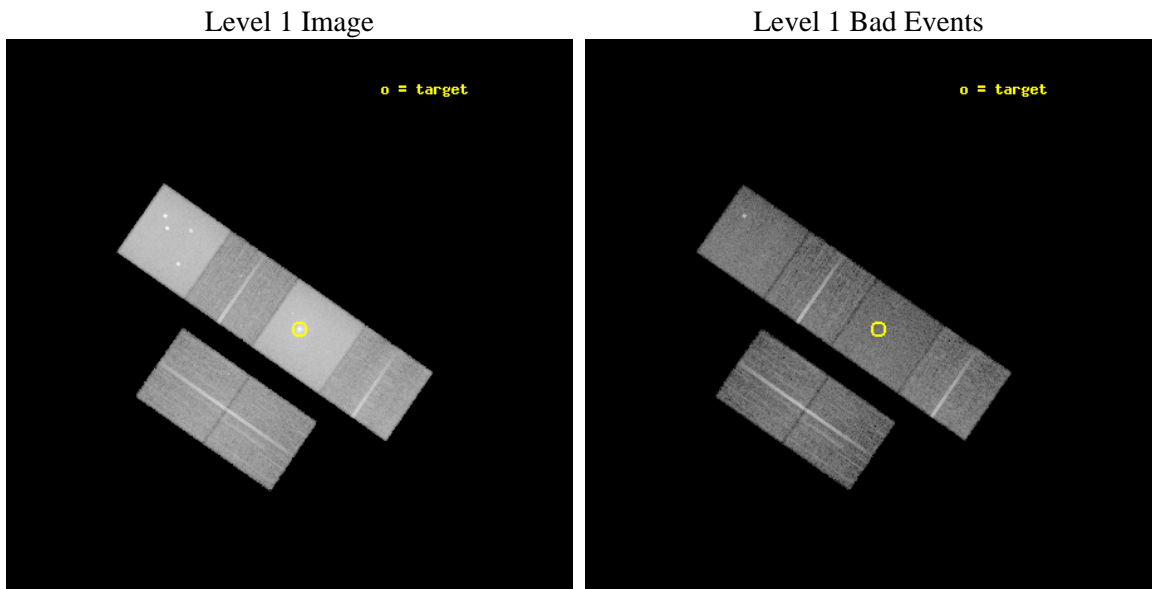
seq_num	800139	Sequence number
obs_id	2200	Observation id
title	THE INTERACTION BETWEEN RADIO GALAXIES AND ICM IN THE CORES OF CLUSTERS	Proposal title
observer	Dr Alastair Edge	Principal investigator
object	A1361	Source name
dtcycle	0	
cycle	P	events from which exps? Prim/Second/Both
ra_targ	175.914583	Observer's specified target RA [deg]
dec_targ	46.356111	Observer's specified target Dec [deg]
ra_nom	175.94096048942	Nominal RA [deg]
dec_nom	46.366547886758	Nominal Dec [deg]
roll_nom	34.786020612572	Nominal Roll [deg]
revision	3	Processing version of data
ontime	16953.600015774	Sum of GTIs [s]
livetime	16738.923324142	Livetime [s]
ontime2	16950.359055549	Sum of GTIs [s]
ontime3	16953.600015774	Sum of GTIs [s]
ontime5	16953.600015774	Sum of GTIs [s]
ontime6	16953.600015774	Sum of GTIs [s]
ontime7	16953.600015774	Sum of GTIs [s]
ontime8	16953.600015774	Sum of GTIs [s]
l2events	594147	Number of level 2 events



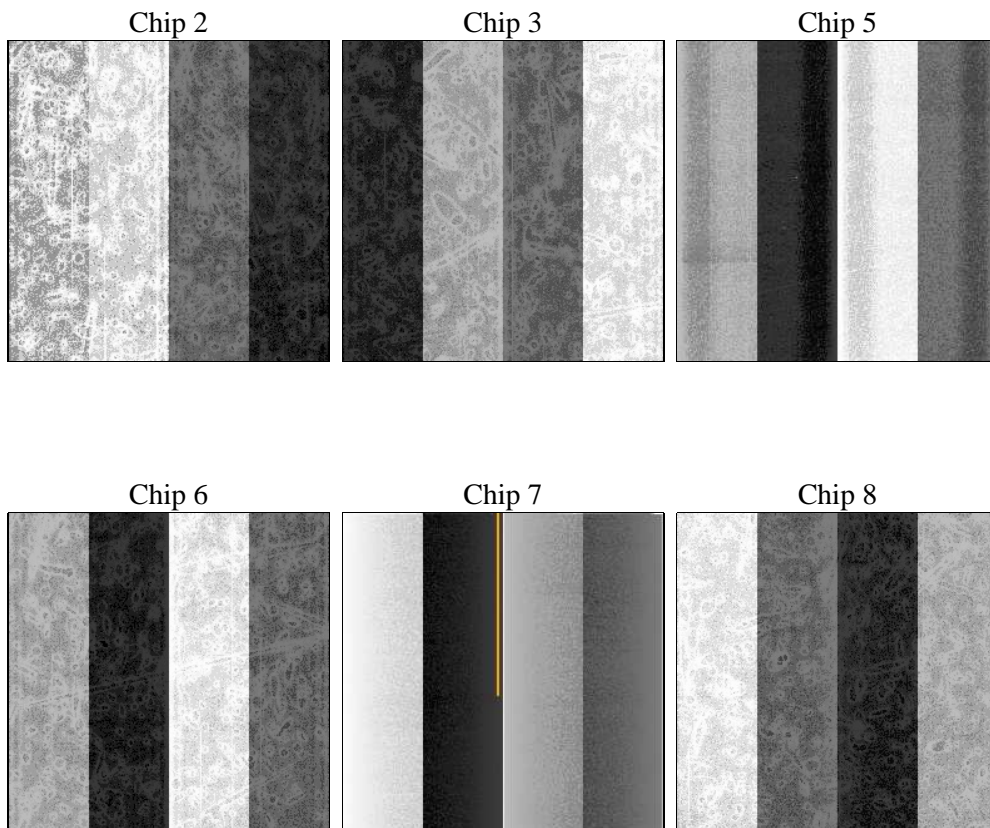
2 OBI

2.1 OBI

2.1.1 Images



2.1.2 Bias



2.1.3 Parameters

obi_num	0	Obi number	sched_exp_time	17000.000000	[s] Scheduled observation exposure time
ascdsver	8.4.5	Processing system revision	ontime	16953.600015774	Sum of GTIs [s]
caldbver	4.5.1.1	 	ontime2	16950.359055549	Sum of GTIs [s]
date	2012-09-02T10:17:32	Date and time of file creation	ontime3	16953.600015774	Sum of GTIs [s]
revision	3	Processing version of data	ontime5	16953.600015774	Sum of GTIs [s]
			ontime6	16953.600015774	Sum of GTIs [s]
			ontime7	16953.600015774	Sum of GTIs [s]
			ontime8	16953.600015774	Sum of GTIs [s]
			l1events	1220943	Number of level 1 events

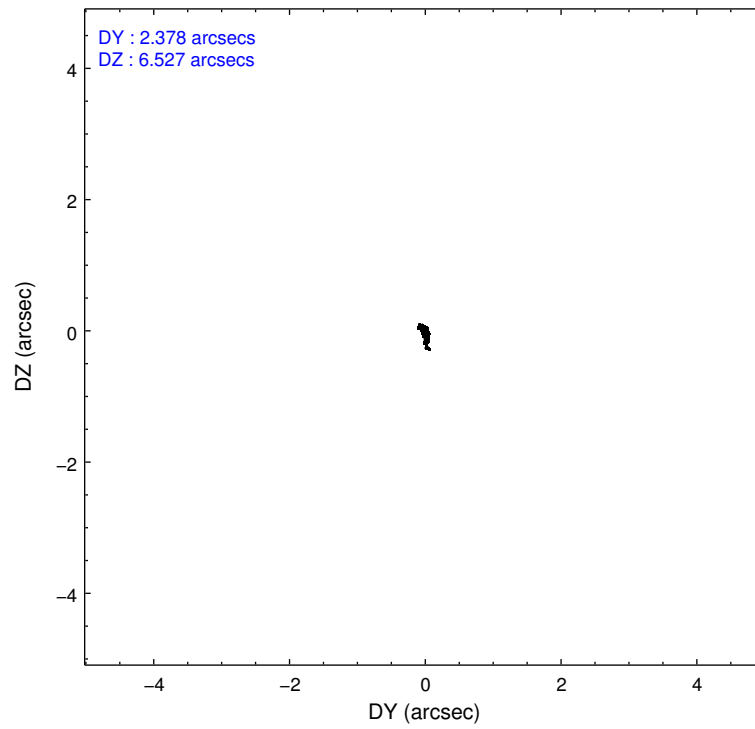
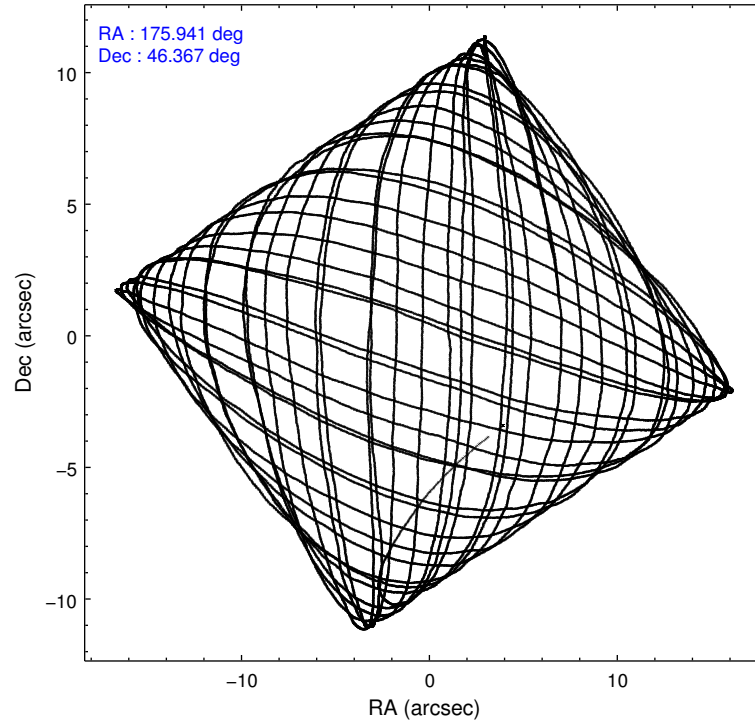
2.1.4 Events

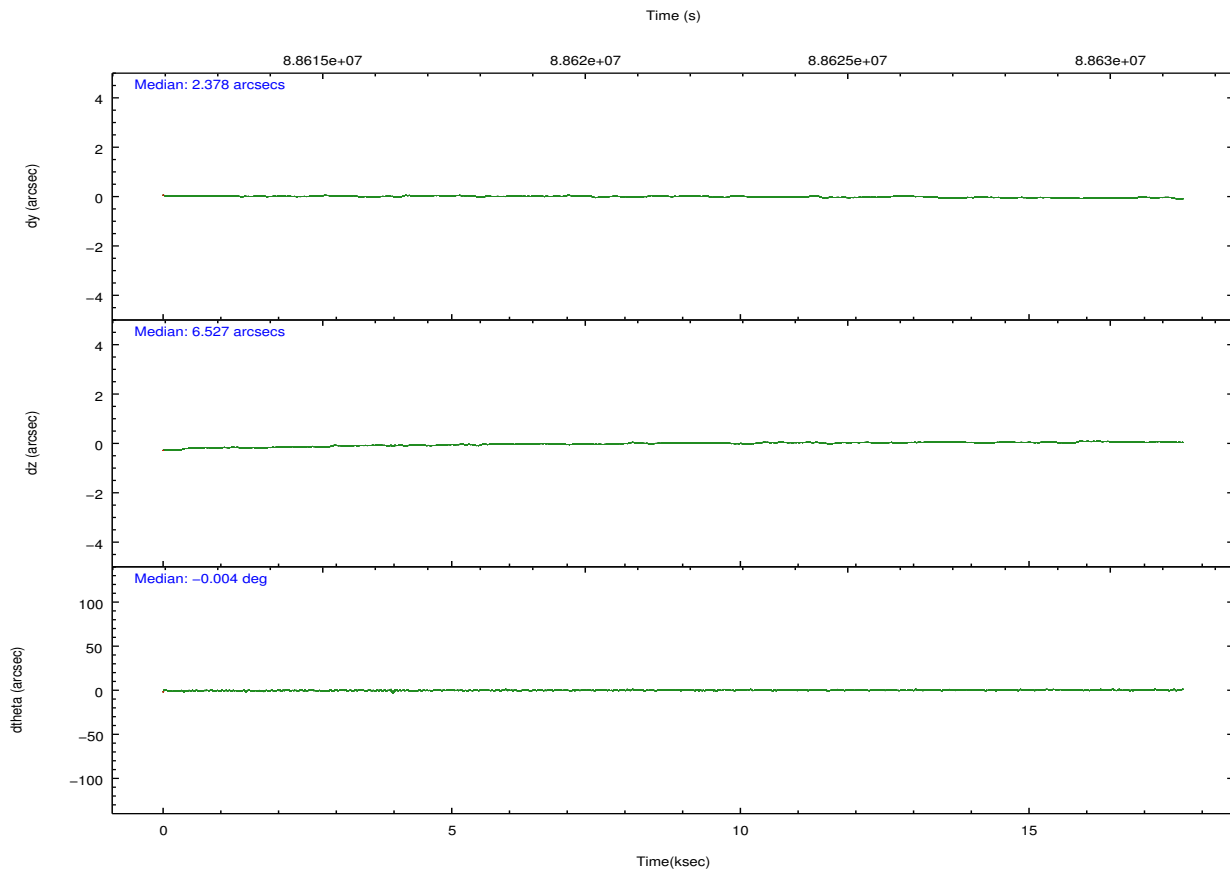
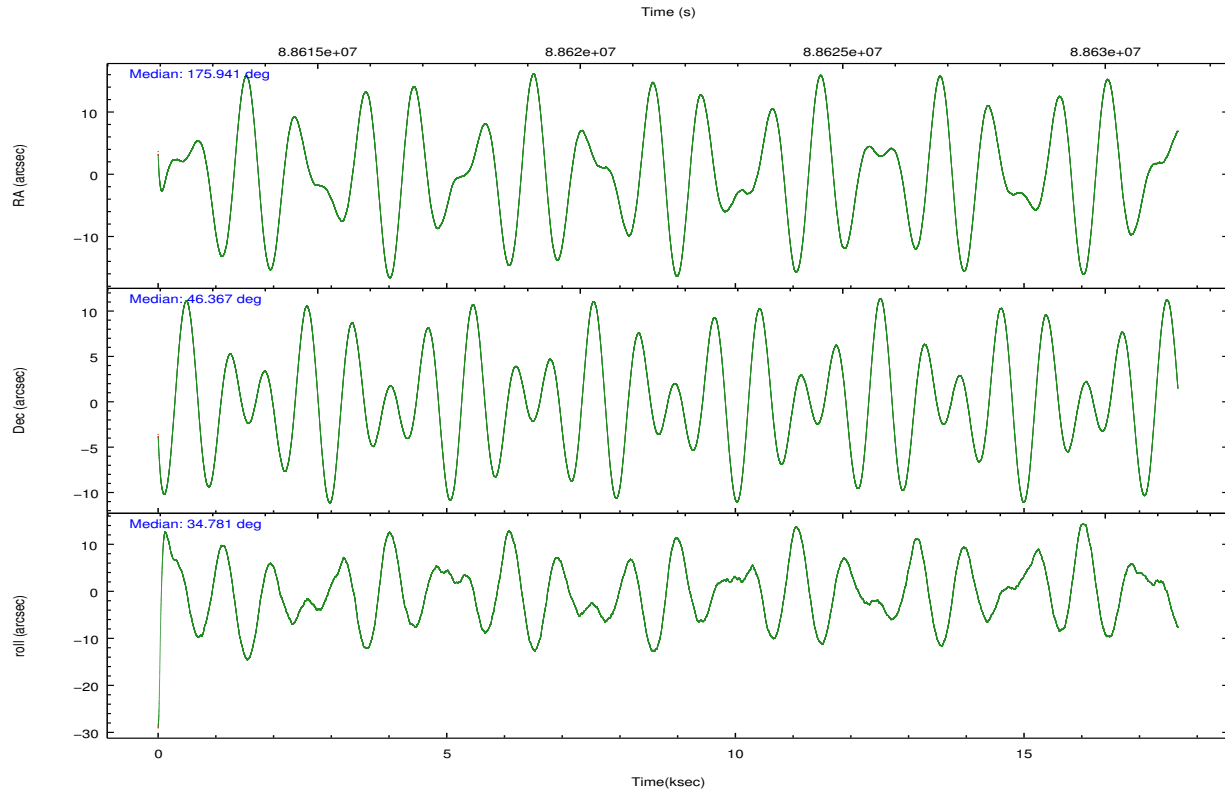
	ccd 2	ccd 3	ccd 5	ccd 6	ccd 7	ccd 8		ccd 2	ccd 3	ccd 5	ccd 6	ccd 7	ccd 8
level 1 events	118216	112350	346004	128183	364416	151774	grade 0 events	10535	9836	46063	19570	38399	19706
rejected events	99785	94879	97417	99339	84058	111675		8%	8%	13%	15%	10%	12%
rejected %	84%	84%	28%	77%	23%	73%	grade 1 events	58	71	255	89	184	118
								0%	0%	0%	0%	0%	0%
							grade 2 events	3435	3036	67291	4164	51818	7167
								2%	2%	19%	3%	14%	4%
							grade 3 events	1221	1197	14351	1345	23346	3132
								1%	1%	4%	1%	6%	2%
							grade 4 events	1162	1268	14035	1329	23080	2890
								0%	1%	4%	1%	6%	1%
							grade 5 events	3541	3829	13697	4326	14229	5680
								2%	3%	3%	3%	3%	3%
							grade 6 events	2094	2146	106976	2464	143903	7229
								1%	1%	30%	1%	39%	4%
							grade 7 events	96170	90967	83336	94896	69457	105852
								81%	80%	24%	74%	19%	69%

2.2 Compared Parameters

Parameter	Planned	Actual	Parameter	Planned	Actual
Instrument	ACIS	ACIS	Obspar format version number	7	7
Detector	ACIS-235678	ACIS-235678	Obspar file type	PREDICTED	ACTUAL
Grating	NONE	NONE	Obspar update status	NONE	UPDATED
Data mode	FAINT	FAINT	Number of optional ACIS chips dropped	0	0
Observation mode	POINTING	POINTING	On-chip summing requested	N	N
[deg] Pointing RA	175.924320	175.940960489415	Subarray requested	NONE	NONE
[deg] Pointing Dec	46.341703	46.36654788675765	Alternating exposures requested	N	N
[deg] Pointing Roll	34.641461	34.78602061257204	[s] Primary exposure time	0.000000	3.2
[mm] SIM focus pos	-0.684267	-0.6828225247311905			
[mm] SIM defocus	0	0.001444936568705701			
[mm] SIM translation stage pos	-190.132523	-190.1425803651734			
[mm] SIM translation stage offset	0	0.01005778216563158			
[s] Observation start time (MET)	88613158.184000	88612113.01956899			
Observation start date	2000-10-22T14:44:54	2000-10-22T14:28:33			
[s] Observation end time (MET)	88630158.184000	88630821.83277699			
Observation end date	2000-10-22T19:28:14	2000-10-22T19:40:21			
Read mode	TIMED	TIMED			

2.3 Aspect



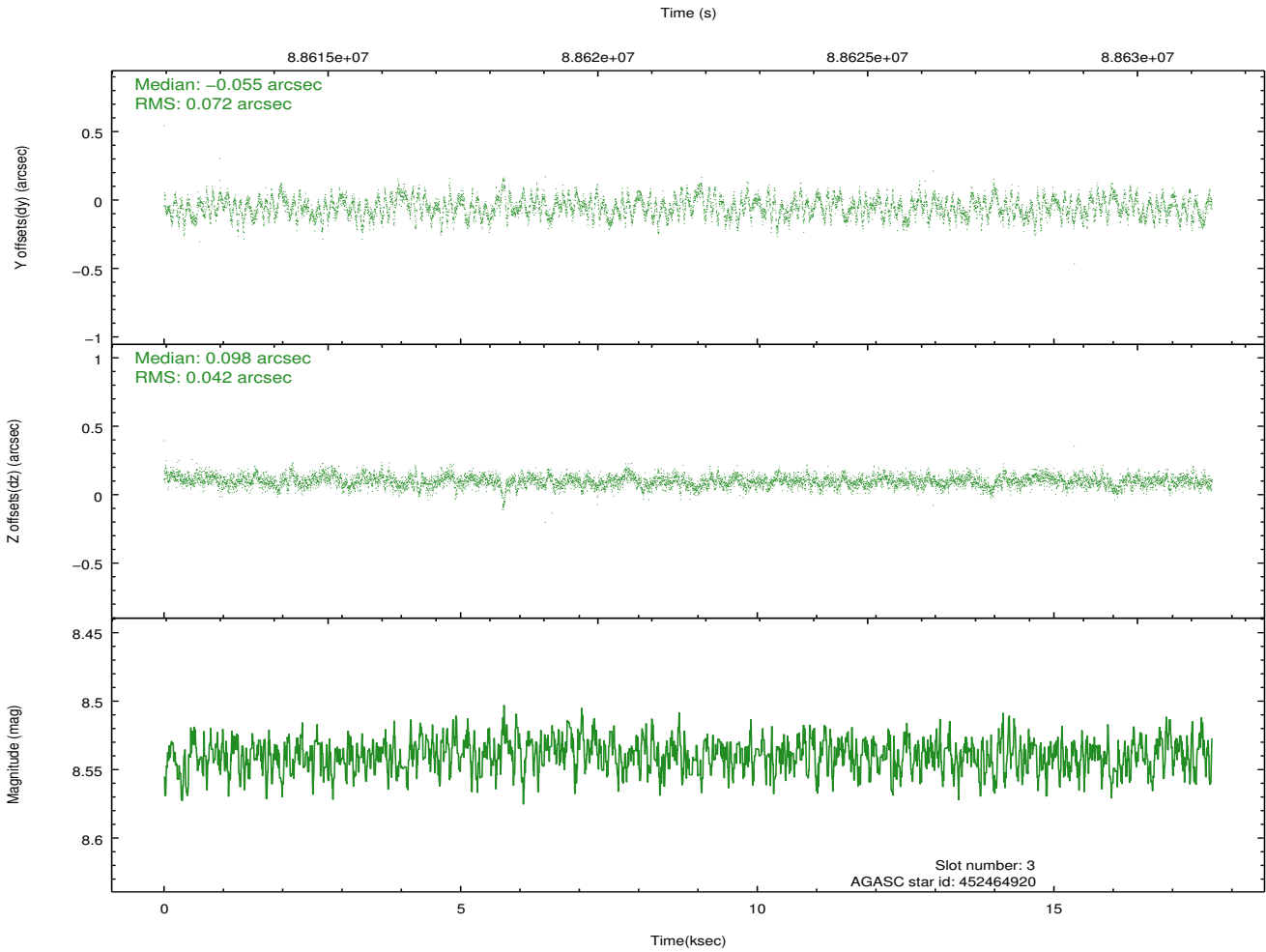
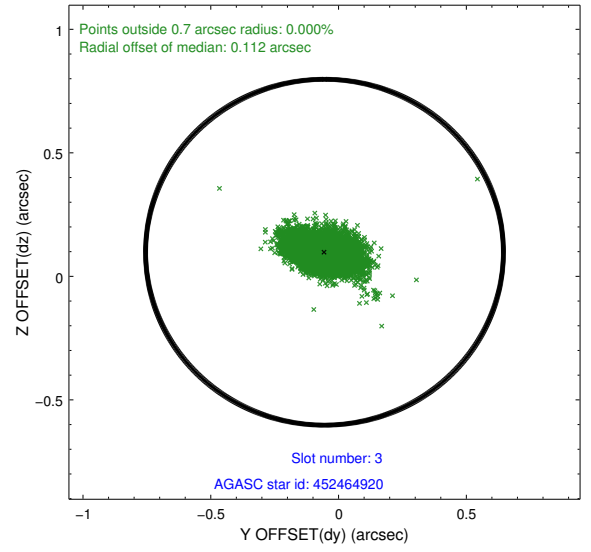
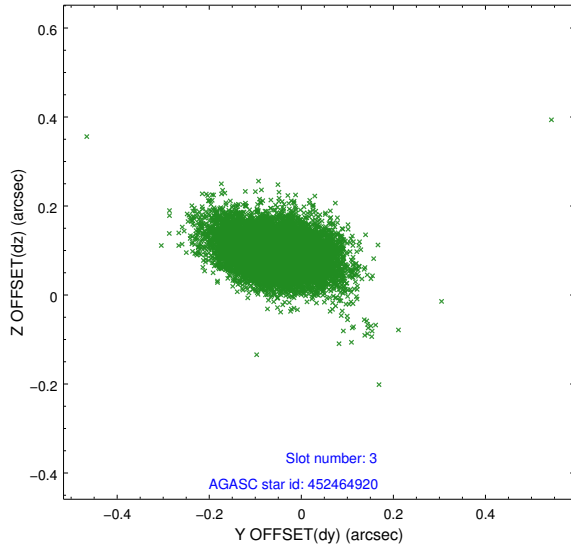


Slot Statistics

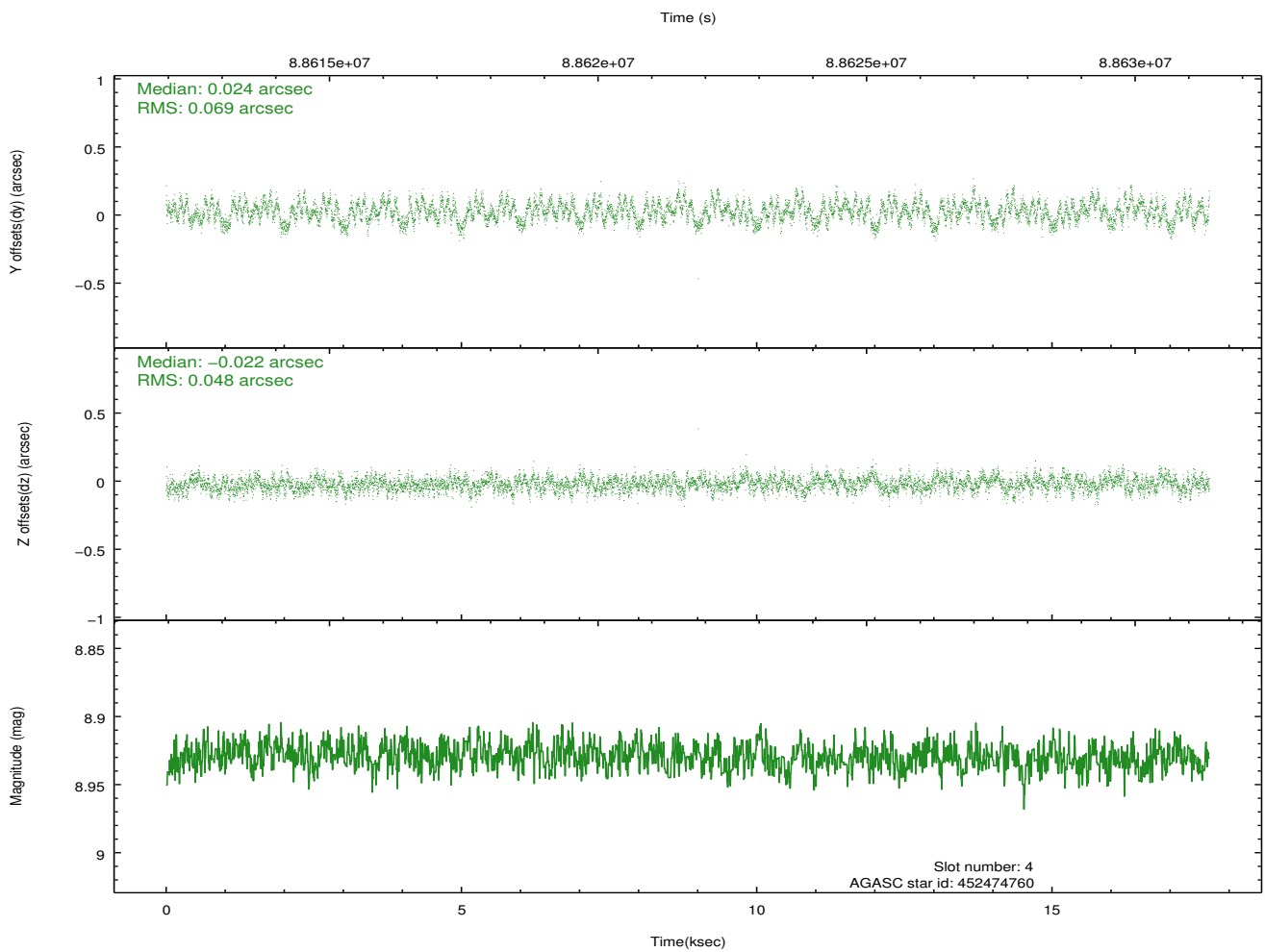
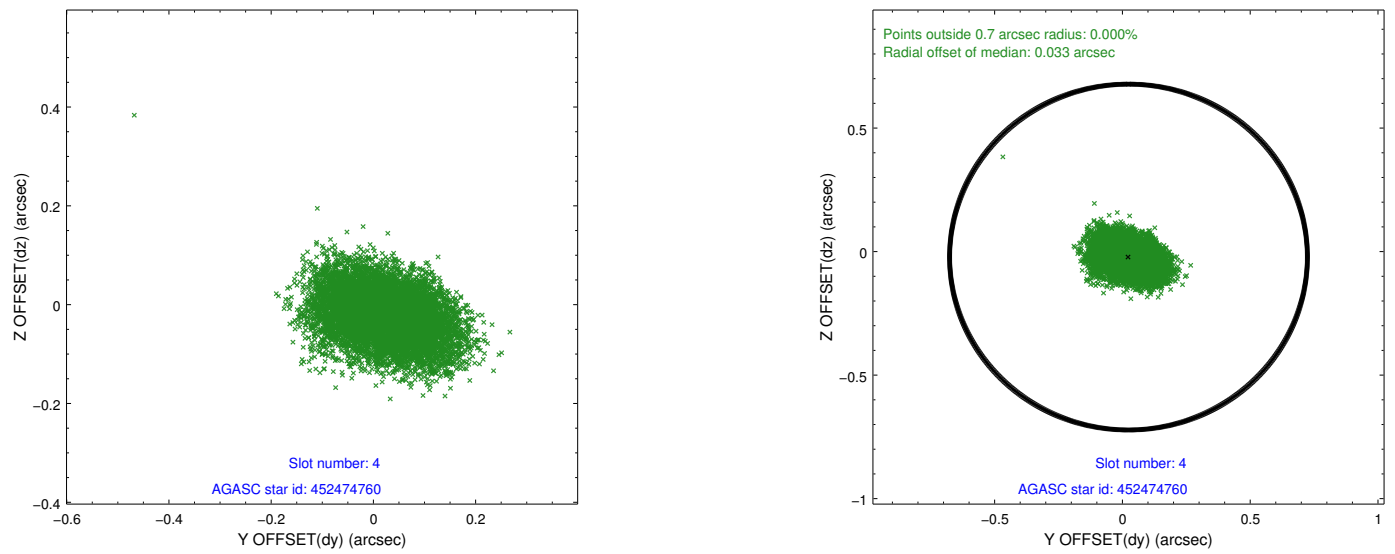
slot	status	id	mag	n_pts	med_dy	med_dz	dr1	dr2	ra	dec	mean_y	mean_z
0	FID	ACIS-S-2	7.11	4309	-0.031	0.003	0.006	0.011	0.000000	0.000000	-755.01	-1727.60
1	FID	ACIS-S-4	7.20	4308	-0.018	0.014	0.006	0.011	0.000000	0.000000	2158.16	180.67
2	FID	ACIS-S-5	7.23	4309	0.018	-0.008	0.006	0.010	0.000000	0.000000	-1807.52	174.56
3	GUIDE	452464920	8.54	8617	-0.055	0.098	0.086	0.143	177.144945	46.130195	2085.09	-2337.72
4	GUIDE	452474760	8.93	8616	0.024	-0.022	0.089	0.146	175.631749	46.506608	-259.02	901.48
5	GUIDE	452468032	9.83	8548	-0.054	-0.130	0.100	0.163	176.120312	46.601291	929.20	494.01
6	GUIDE	452465552	9.52	8612	-0.120	0.118	0.099	0.166	177.100200	46.202584	2137.23	-2059.04
7	GUIDE	452474296	9.44	8613	0.208	-0.064	0.073	0.119	175.196051	46.137456	-1908.52	434.34

2.4 Star Slots

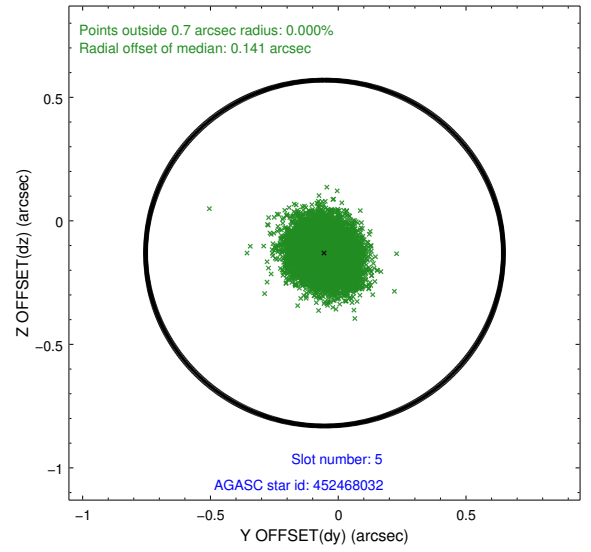
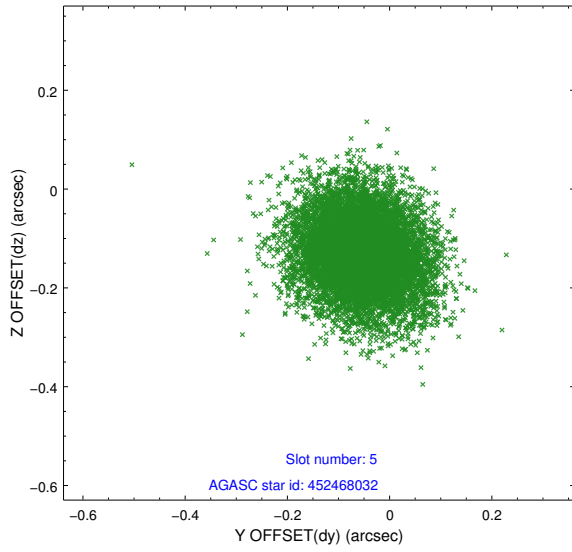
2.4.1 Slot 3



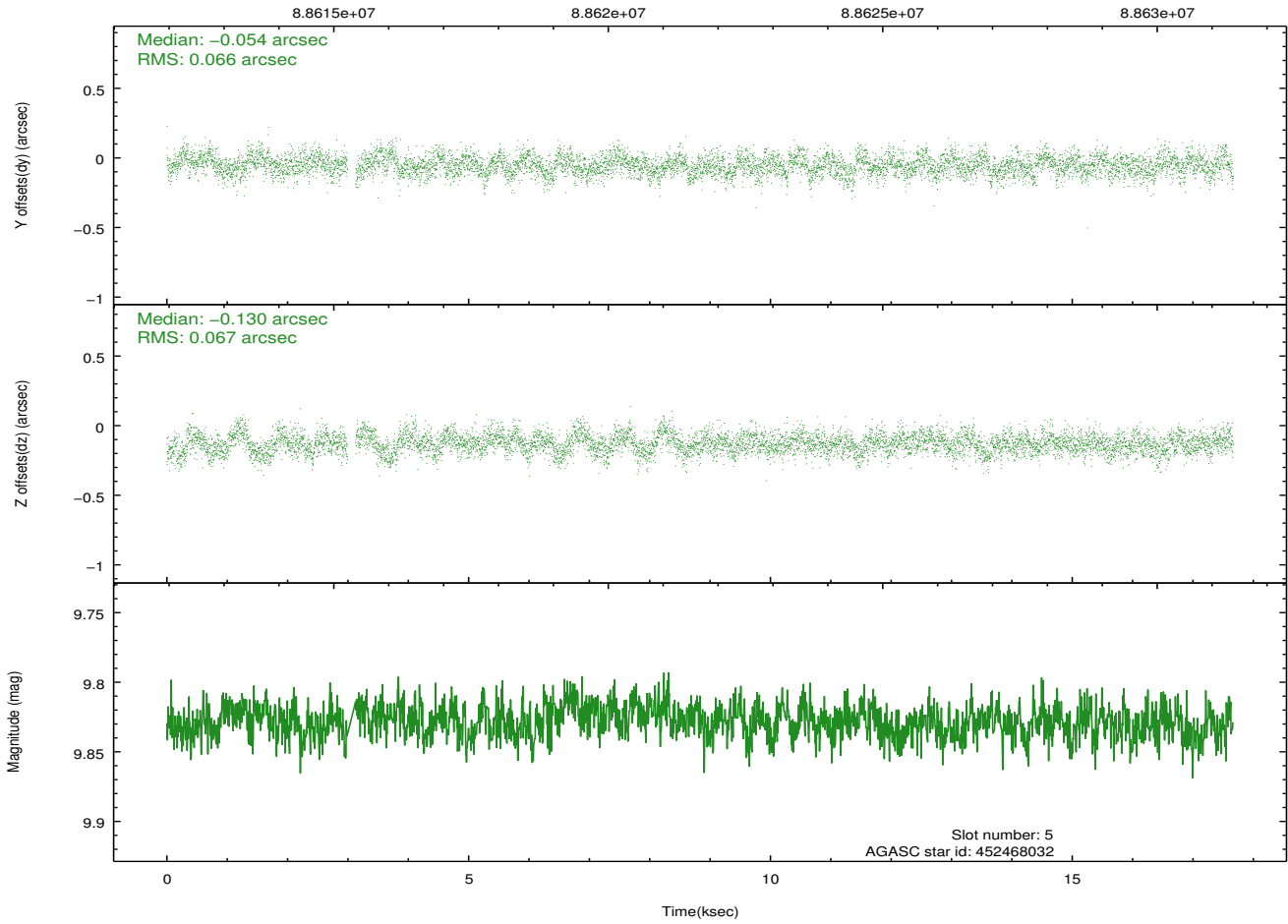
2.4.2 Slot 4



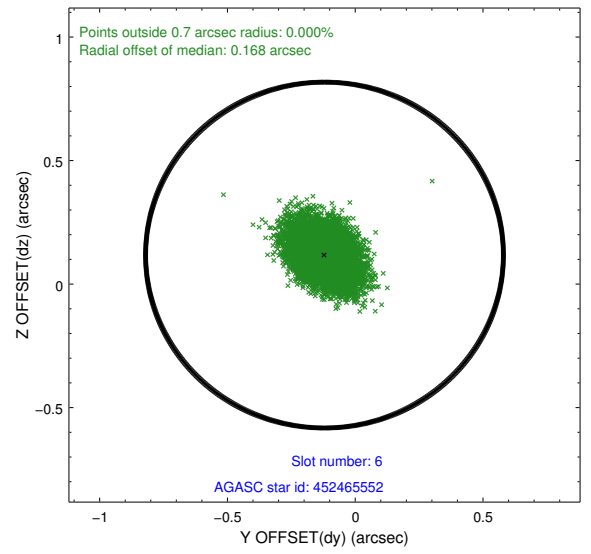
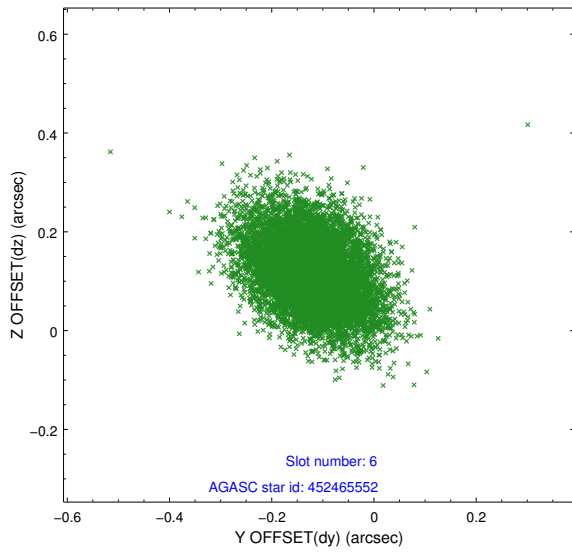
2.4.3 Slot 5



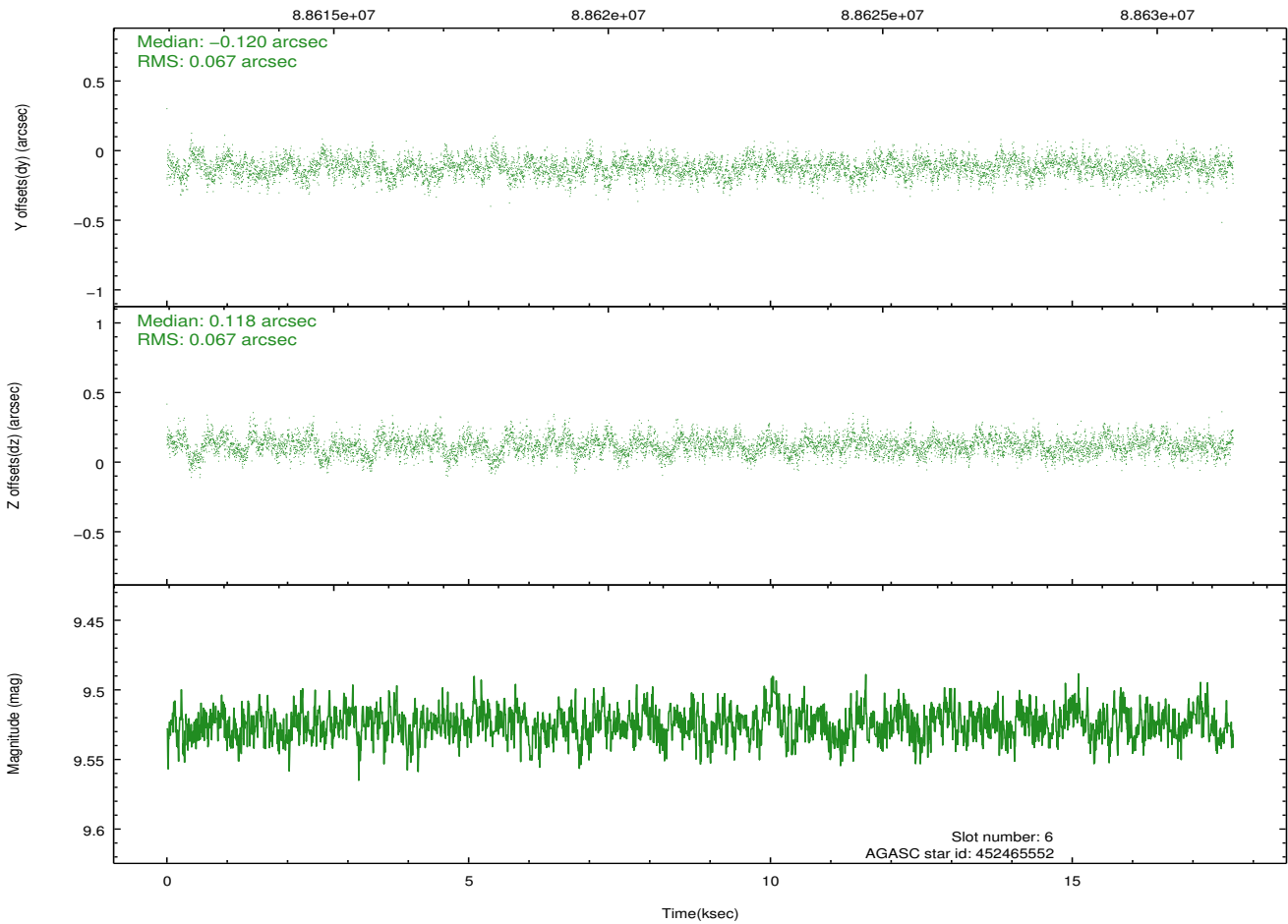
Time (s)



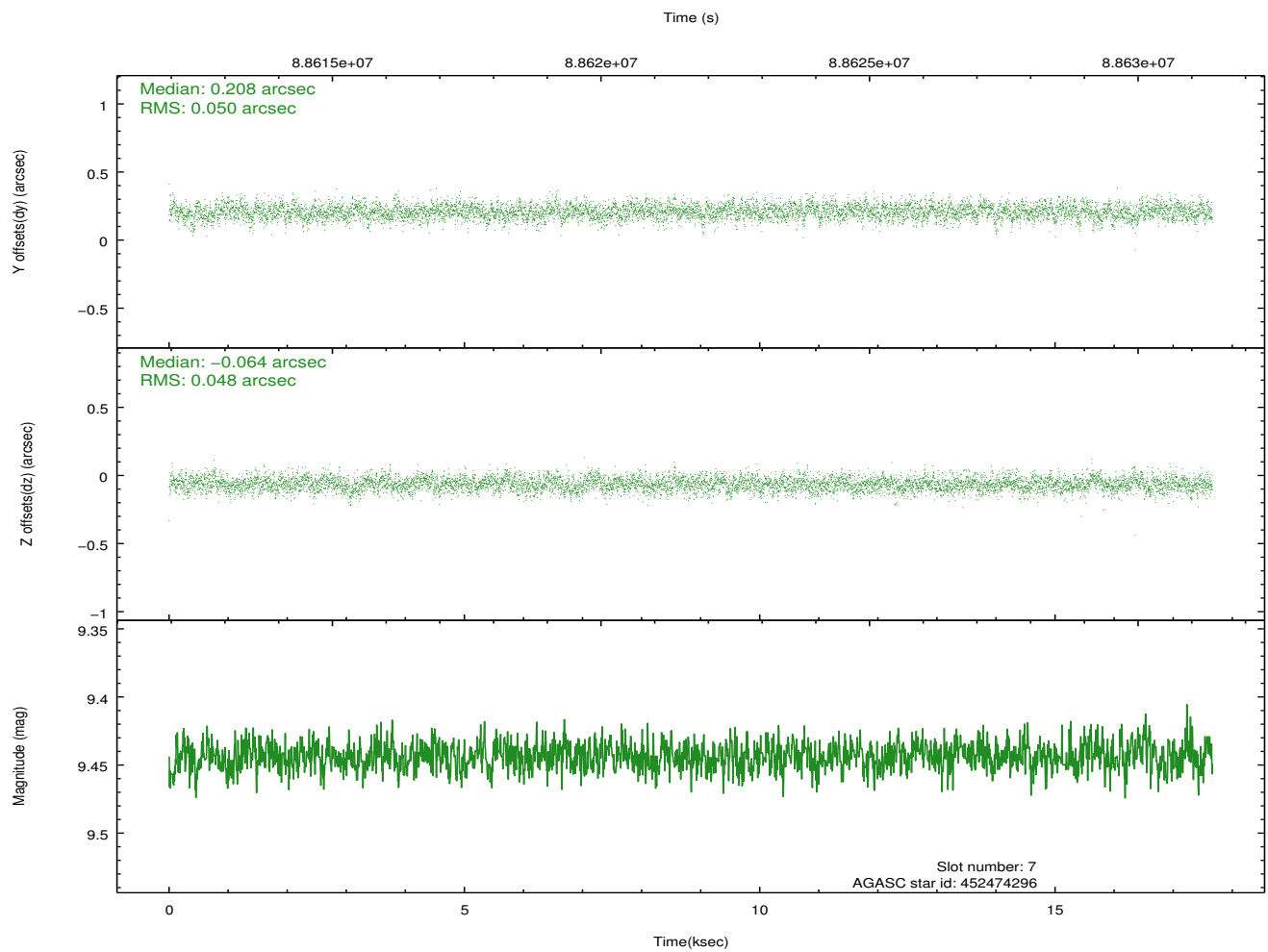
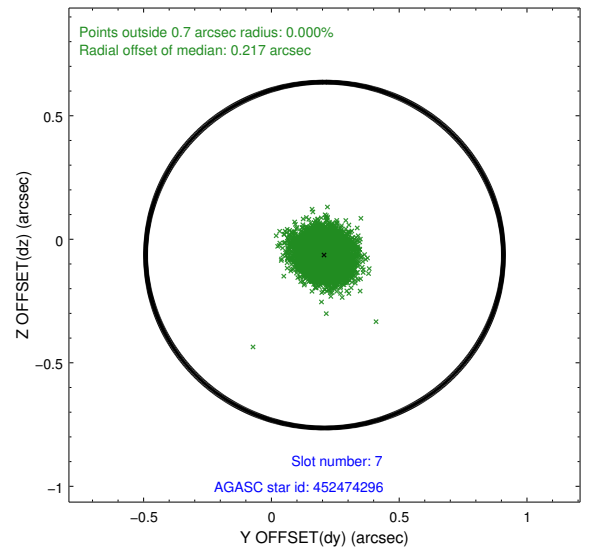
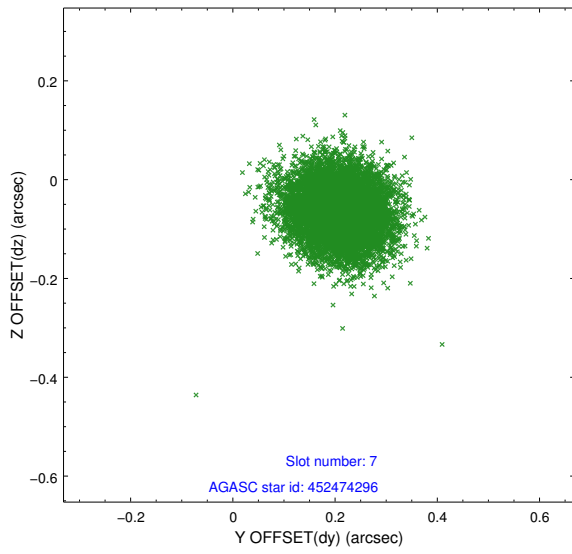
2.4.4 Slot 6



Time (s)

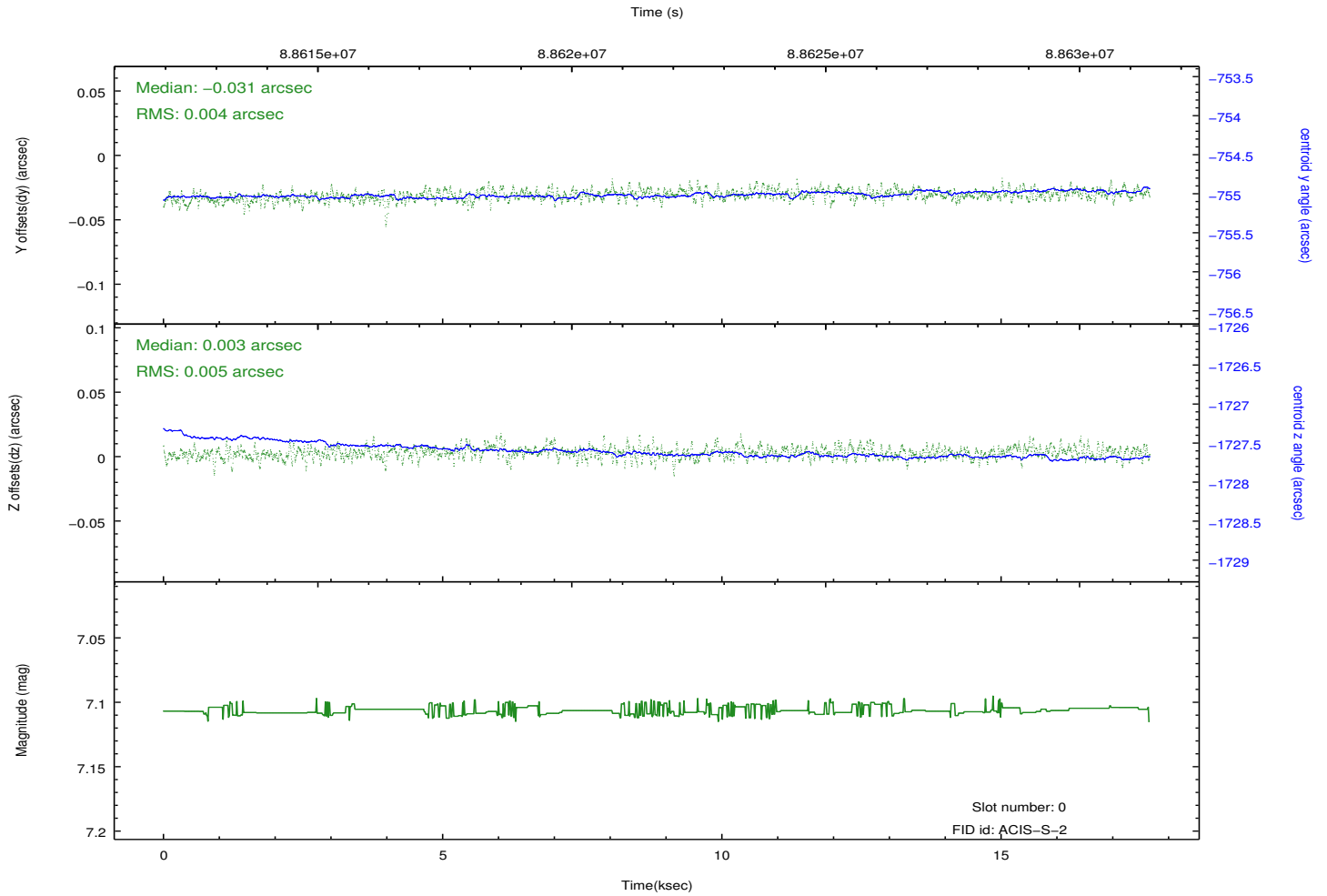
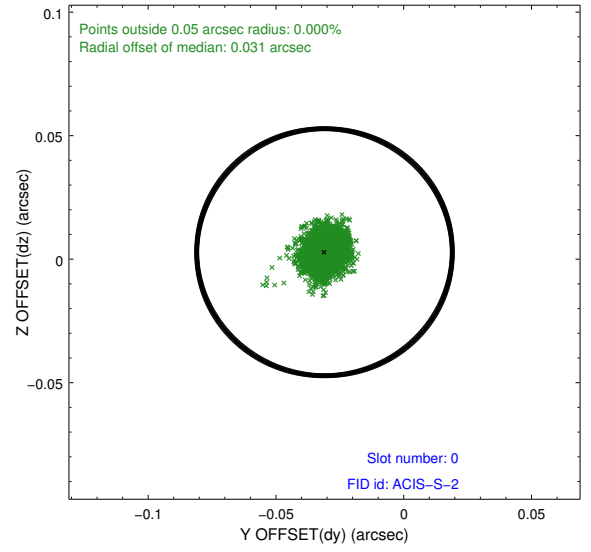
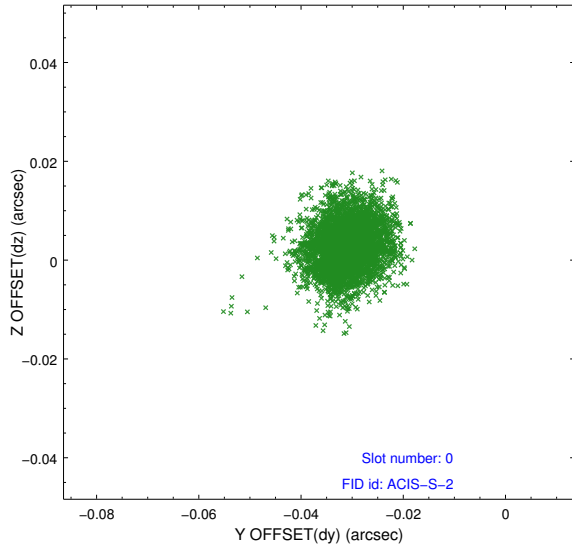


2.4.5 Slot 7

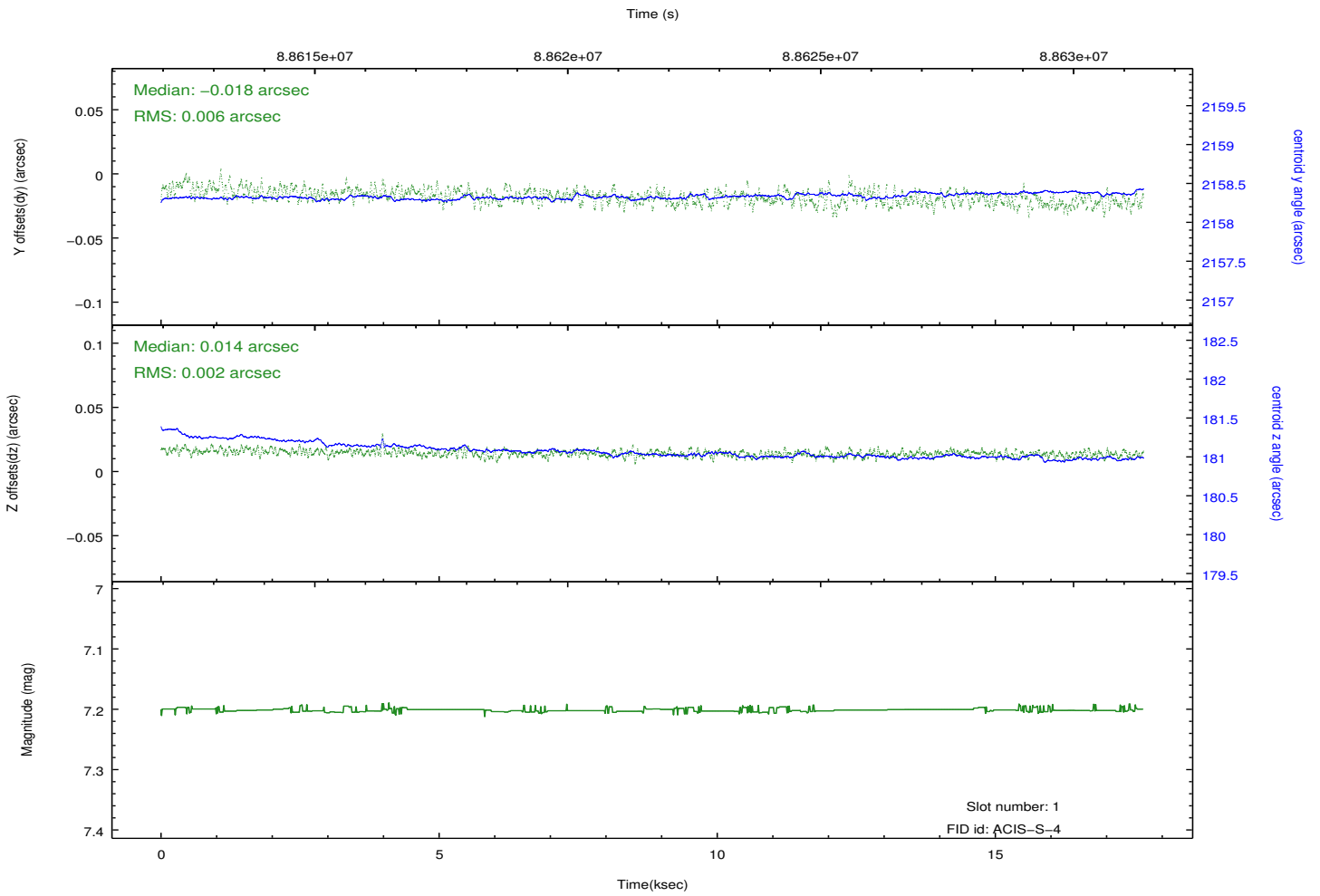
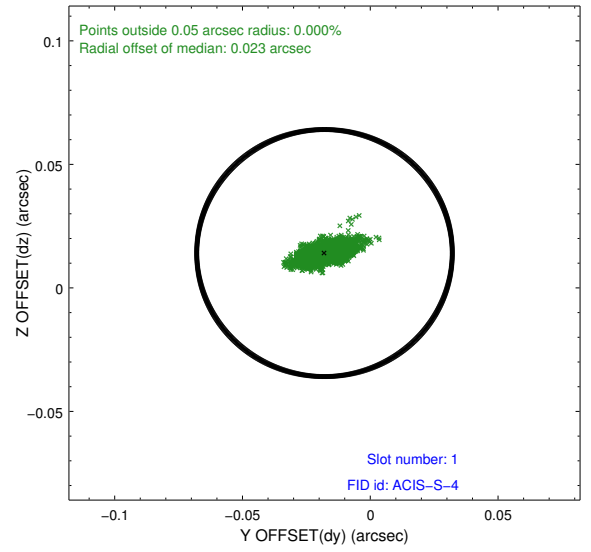
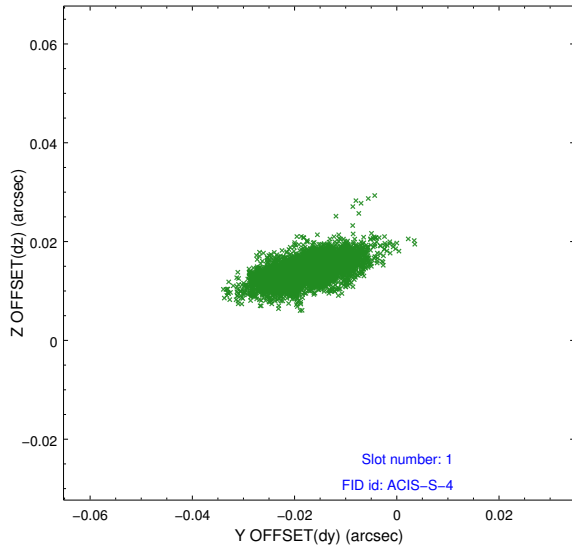


2.5 FID Slots

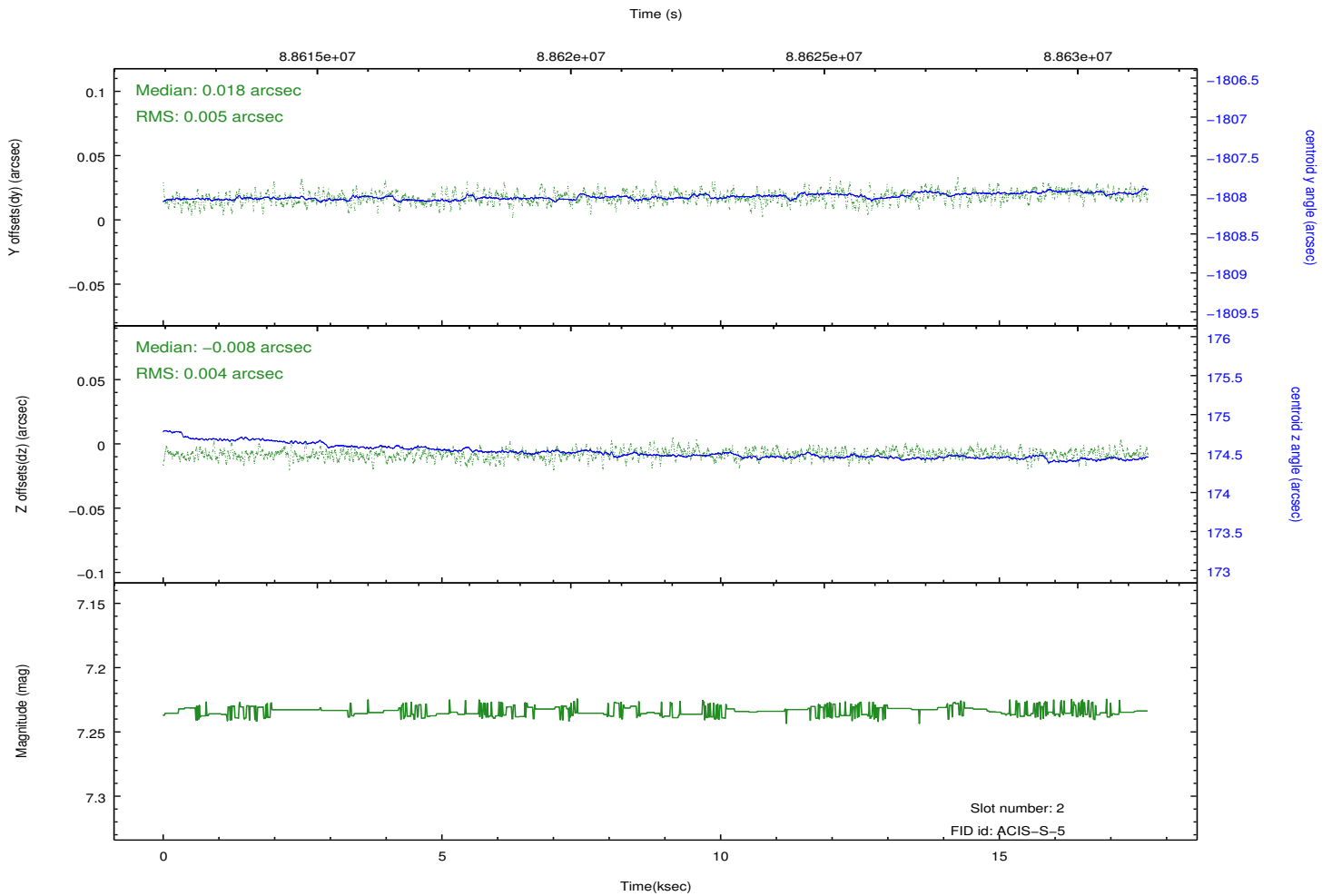
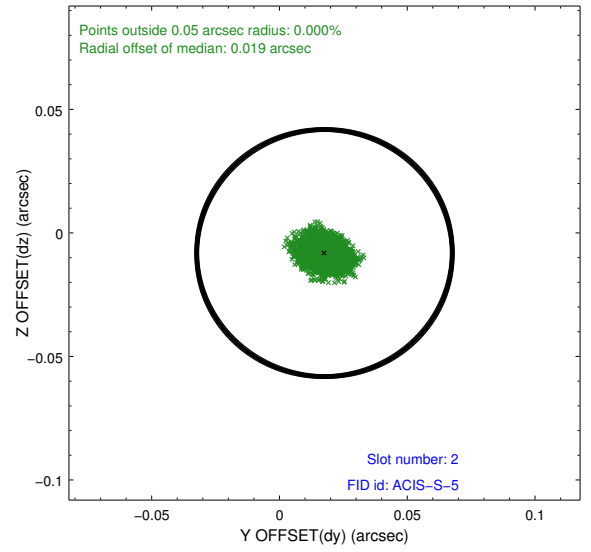
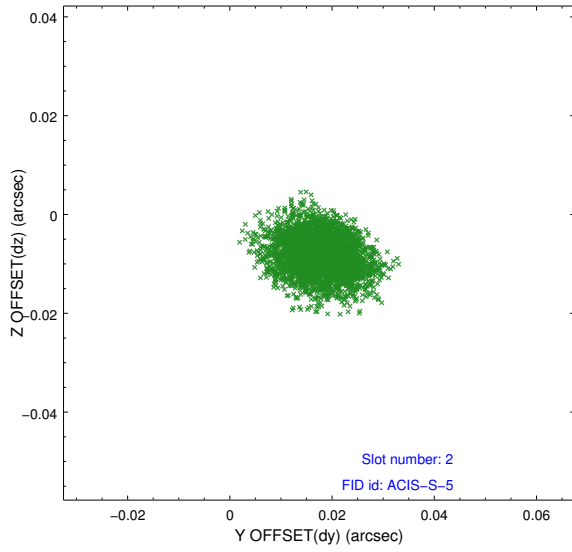
2.5.1 Slot 0



2.5.2 Slot 1



2.5.3 Slot 2



A Summary

A.1 Status

V&V Scientist	Jen Lauer
V&V Date (YYYY-MM-DD)	2012.09.10
V&V Edition	1
V&V Disposition and Status	OK
V&V Charge Time	16.956

A.2 Comments