

V&V Reference Report

L2 ASCDS Version : 8.4.5

Observation 2550 - L2 Version 3
Chandra X-Ray Center

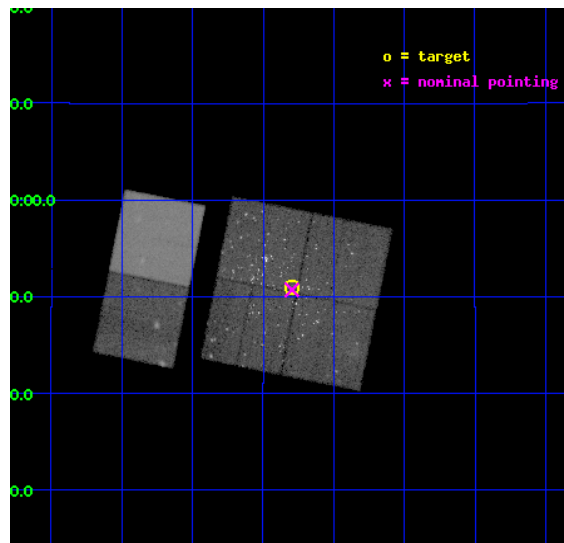
L2 Processing Date : Oct 2 2012

Contents

1	Front	2
2	OBI	3
2.1	OBI	3
2.1.1	Images	3
2.1.2	Bias	3
2.1.3	Parameters	4
2.1.4	Events	4
2.2	Compared Parameters	5
2.3	Aspect	6
2.4	Star Slots	9
2.4.1	Slot 3	9
2.4.2	Slot 4	10
2.4.3	Slot 5	11
2.4.4	Slot 6	12
2.4.5	Slot 7	13
2.5	FID Slots	14
2.5.1	Slot 0	14
2.5.2	Slot 1	15
2.5.3	Slot 2	16
A	Summary	17
A.1	Status	17
A.2	Comments	17

1 Front

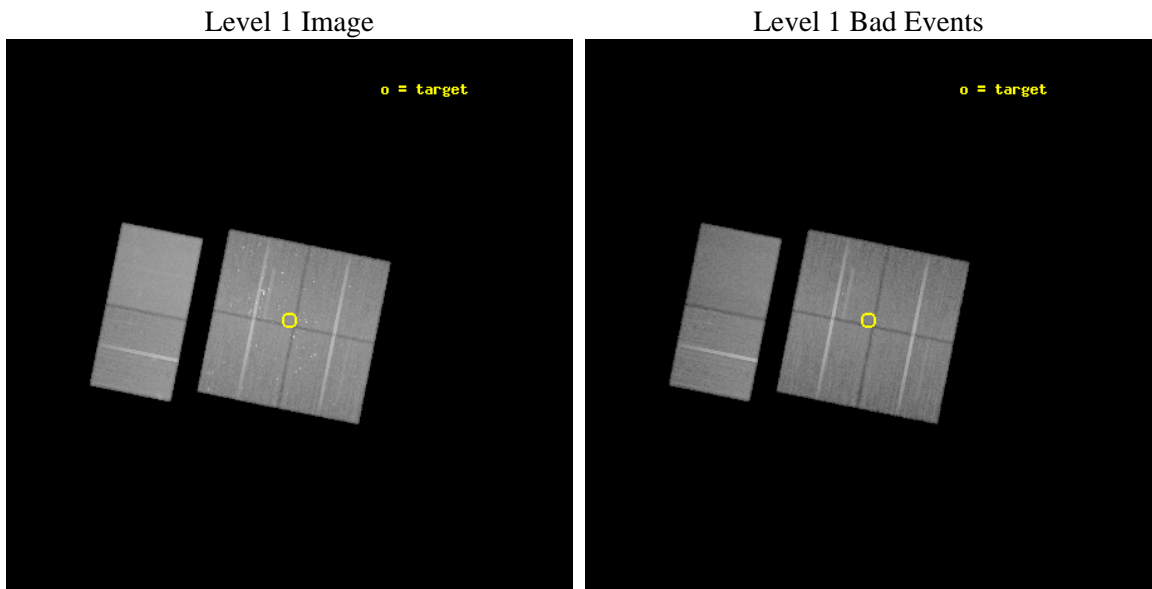
seq_num	200158	Sequence number
obs_id	2550	Observation id
title	THE AGE-ROTATION-ACTIVITY RELATION IN LATE-TYPE STARS BETWEEN ~1-10 MYR	Proposal title
observer	Dr. John Stauffer	Principal investigator
object	NGC 2264	Source name
dtcycle	0	
cycle	P	events from which exps? Prim/Second/Both
ra_targ	100.2	Observer's specified target RA [deg]
dec_targ	9.85	Observer's specified target Dec [deg]
ra_nom	100.19904618434	Nominal RA [deg]
dec_nom	9.8454177550311	Nominal Dec [deg]
roll_nom	281.37148265824	Nominal Roll [deg]
revision	3	Processing version of data
ontime	48752.000045389	Sum of GTIs [s]
livetime	48134.672865884	Livetime [s]
ontime0	48752.000045389	Sum of GTIs [s]
ontime1	48752.000045389	Sum of GTIs [s]
ontime2	48745.518064961	Sum of GTIs [s]
ontime3	48752.000045389	Sum of GTIs [s]
ontime6	48752.000045389	Sum of GTIs [s]
ontime7	48752.000045389	Sum of GTIs [s]
l2events	378642	Number of level 2 events



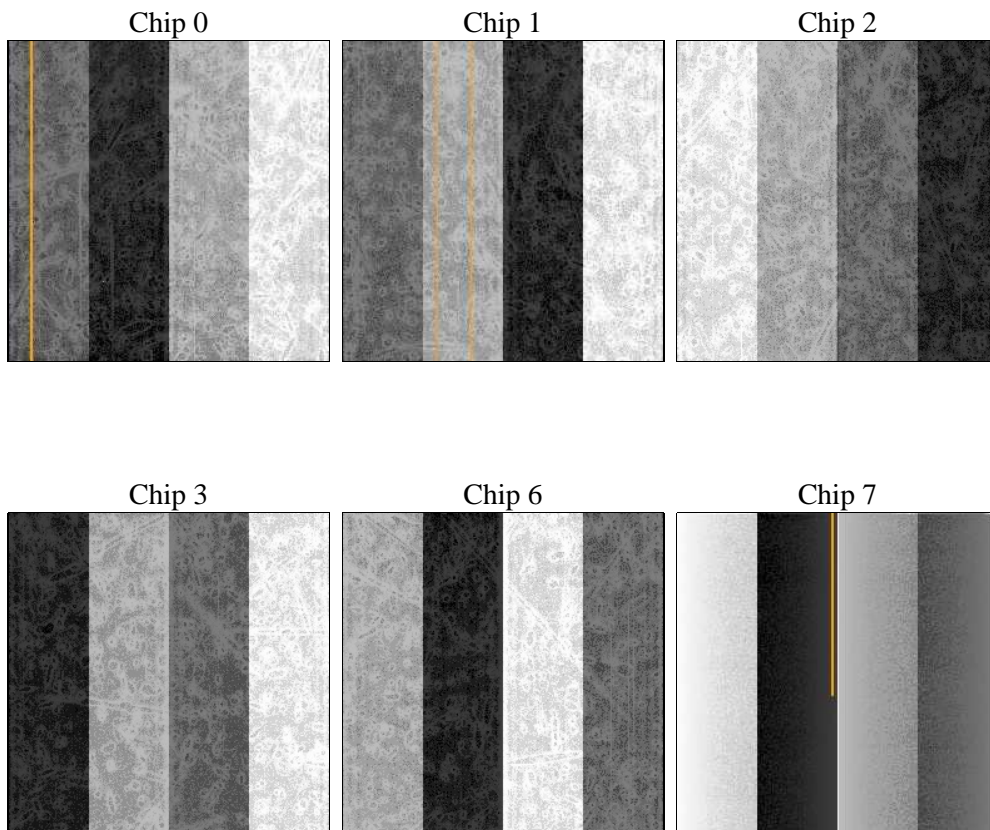
2 OBI

2.1 OBI

2.1.1 Images



2.1.2 Bias



2.1.3 Parameters

obi_num	0	Obi number	sched_exp_time	49000.000000	[s] Scheduled observation exposure time
ascdsver	8.4.5	Processing system revision	ontime	48752.000045389	Sum of GTIs [s]
caldbver	4.5.2	 	ontime0	48752.000045389	Sum of GTIs [s]
date	2012-10-02T07:46:40	Date and time of file creation	ontime1	48752.000045389	Sum of GTIs [s]
revision	3	Processing version of data	ontime2	48745.518064961	Sum of GTIs [s]
			ontime3	48752.000045389	Sum of GTIs [s]
			ontime6	48752.000045389	Sum of GTIs [s]
			ontime7	48752.000045389	Sum of GTIs [s]
			l1events	2033282	Number of level 1 events

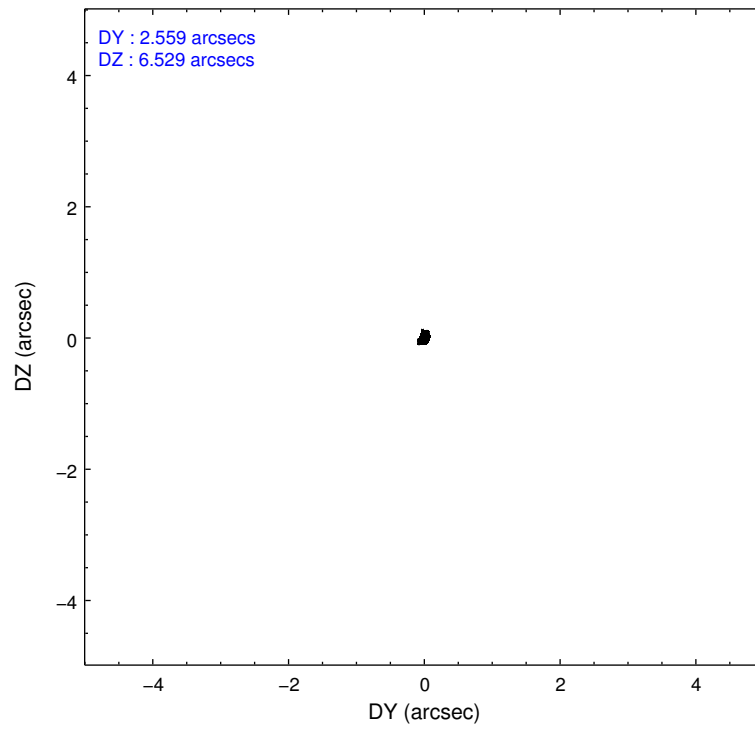
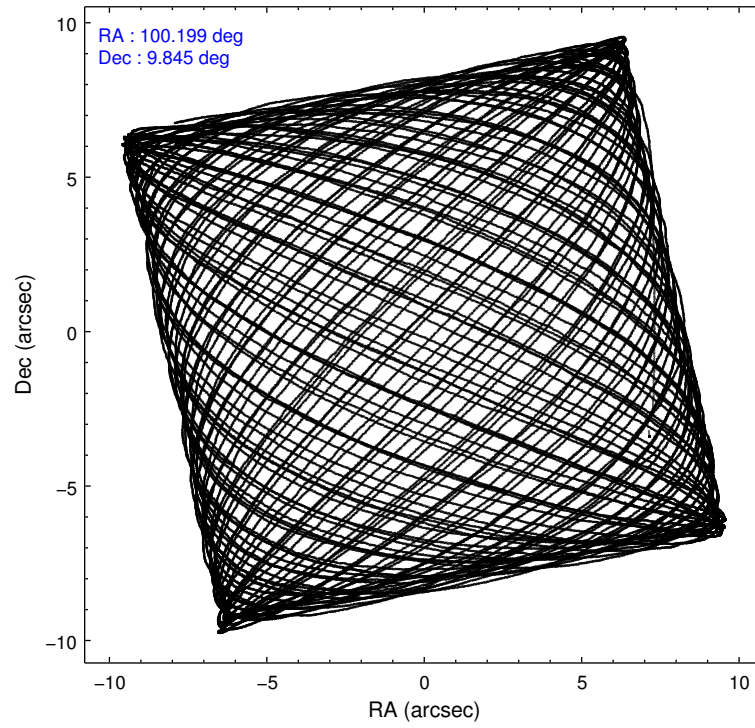
2.1.4 Events

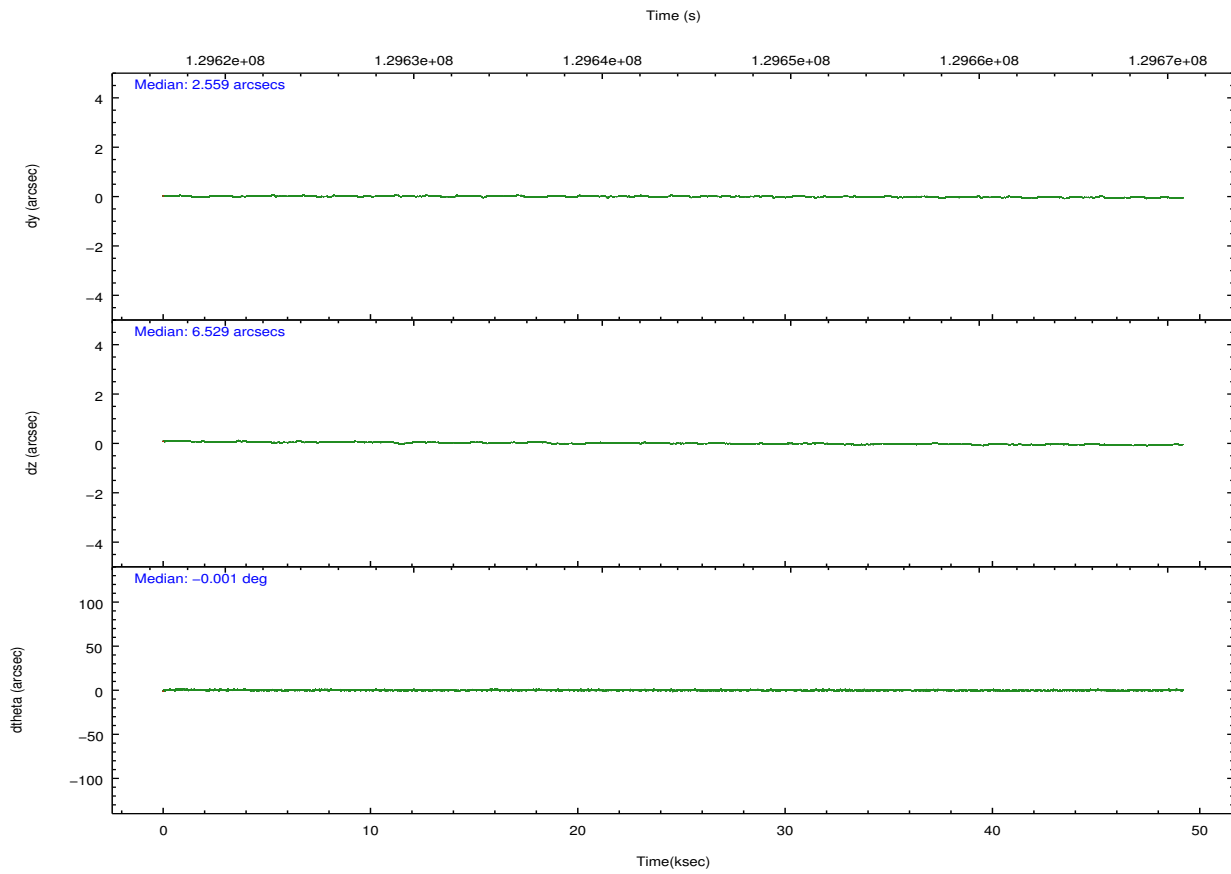
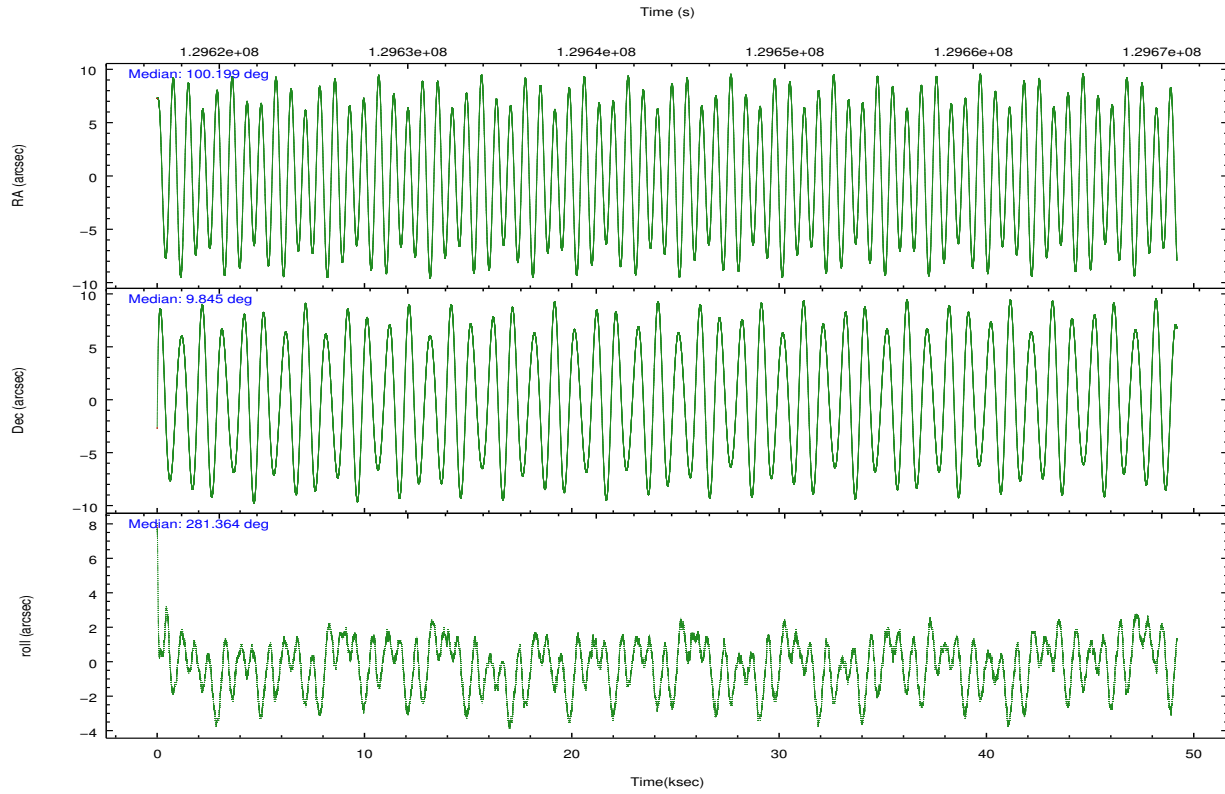
	ccd 0	ccd 1	ccd 2	ccd 3	ccd 6	ccd 7		ccd 0	ccd 1	ccd 2	ccd 3	ccd 6	ccd 7
level 1 events	303454	303623	325081	343386	335660	422078	grade 0 events	24462	20541	19219	39013	16530	16010
rejected events	255524	258342	283580	279897	296027	246829		8%	6%	5%	11%	4%	3%
rejected %	84%	85%	87%	81%	88%	58%	grade 1 events	280	196	163	558	177	418
								0%	0%	0%	0%	0%	0%
							grade 2 events	8861	8496	8679	9704	7985	34441
								2%	2%	2%	2%	2%	8%
							grade 3 events	4011	4217	3533	3974	3806	15716
								1%	1%	1%	1%	1%	3%
							grade 4 events	3706	4268	3565	4052	3645	15657
								1%	1%	1%	1%	1%	3%
							grade 5 events	11787	12917	11002	12970	13853	40461
								3%	4%	3%	3%	4%	9%
							grade 6 events	6898	7764	6508	6749	7670	93439
								2%	2%	2%	1%	2%	22%
							grade 7 events	243449	245224	272412	266366	281994	205936
								80%	80%	83%	77%	84%	48%

2.2 Compared Parameters

Parameter	Planned	Actual	Parameter	Planned	Actual
Instrument	ACIS	ACIS	Obspar format version number	7	7
Detector	ACIS-012367	ACIS-012367	Obspar file type	PREDICTED	ACTUAL
Grating	NONE	NONE	Obspar update status	NONE	UPDATED
Data mode	FAINT	FAINT	Number of optional ACIS chips dropped	0	0
Observation mode	POINTING	POINTING	On-chip summing requested	N	N
[deg] Pointing RA	100.180599	100.1990461843376	Subarray requested	NONE	NONE
[deg] Pointing Dec	9.865934	9.845417755031139	Alternating exposures requested	N	N
[deg] Pointing Roll	281.165956	281.371482658243	[s] Primary exposure time	0.000000	3.2
[mm] SIM focus pos	-0.782348	-0.7809083437167272			
[mm] SIM defocus	0	0.001439871863259334			
[mm] SIM translation stage pos	-233.592463	-233.5874344608287			
[mm] SIM translation stage offset	0	-0.005018542100998502			
[s] Observation start time (MET)	129619349.184000	129618647.97325			
Observation start date	2002-02-09T05:21:25	2002-02-09T05:10:47			
[s] Observation end time (MET)	129668349.184000	129668924.22527			
Observation end date	2002-02-09T18:58:05	2002-02-09T19:08:44			
Read mode	TIMED	TIMED			

2.3 Aspect



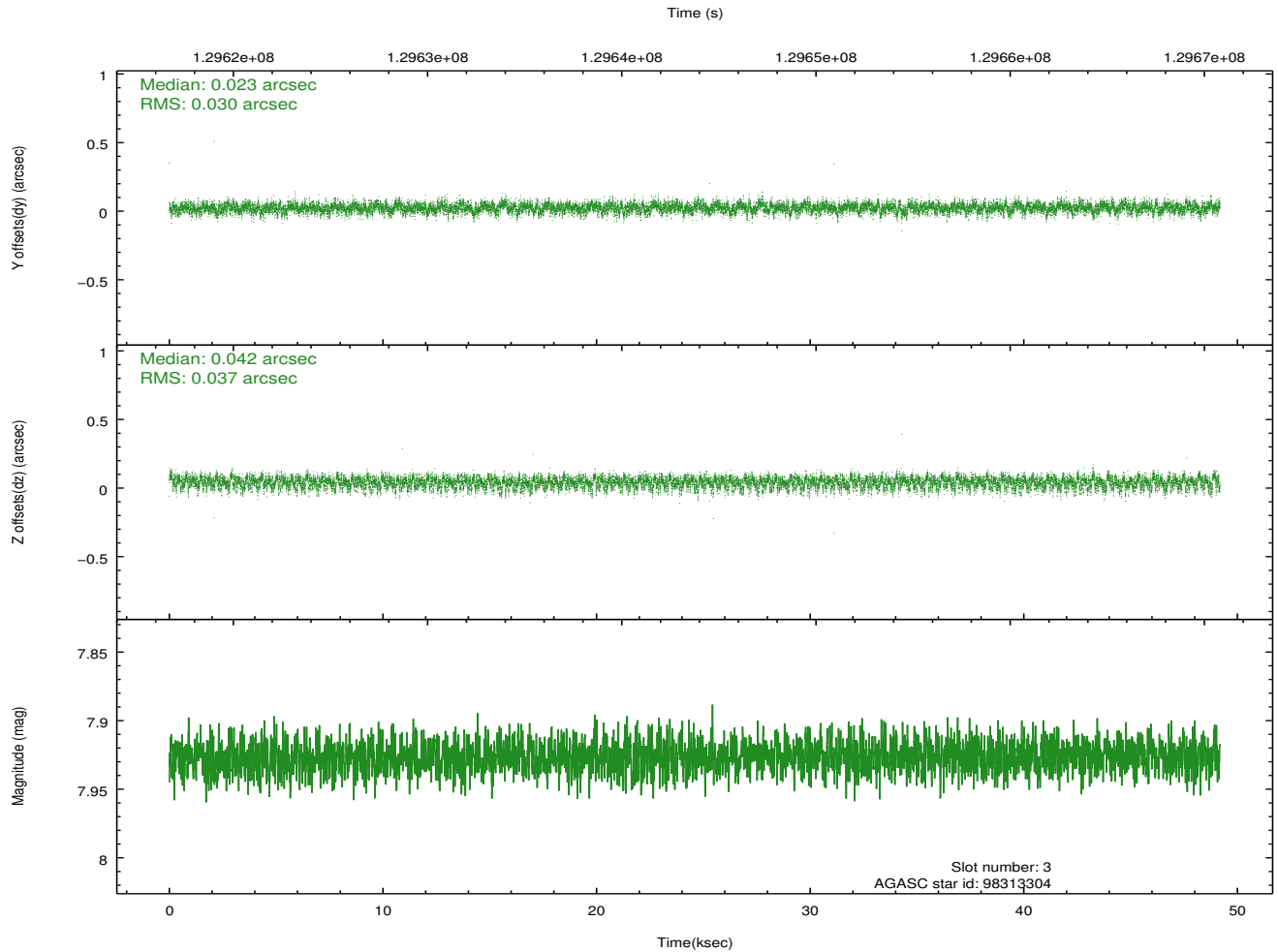
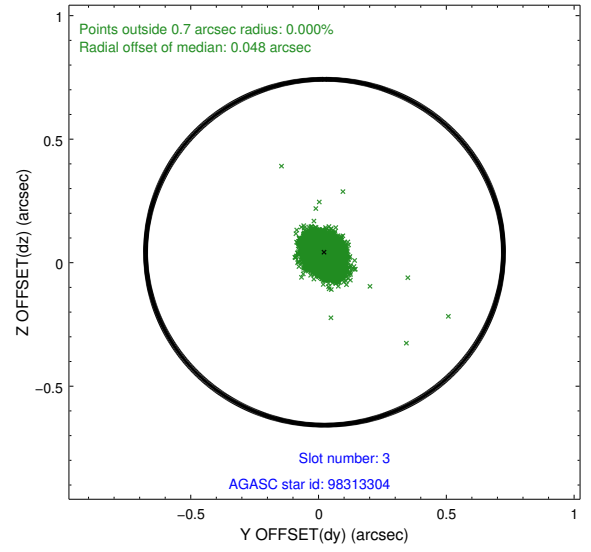
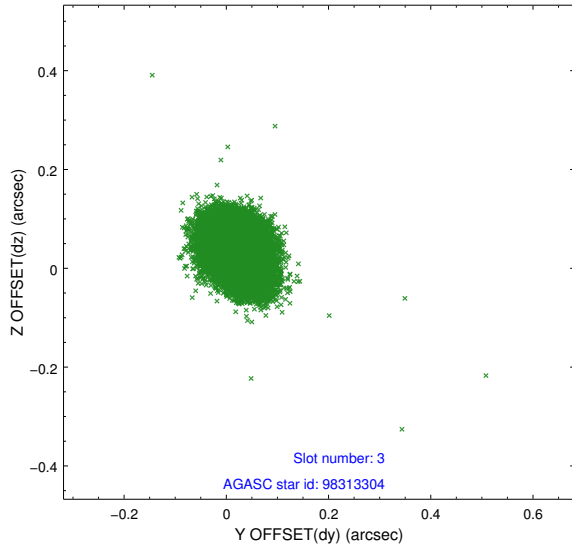


Slot Statistics

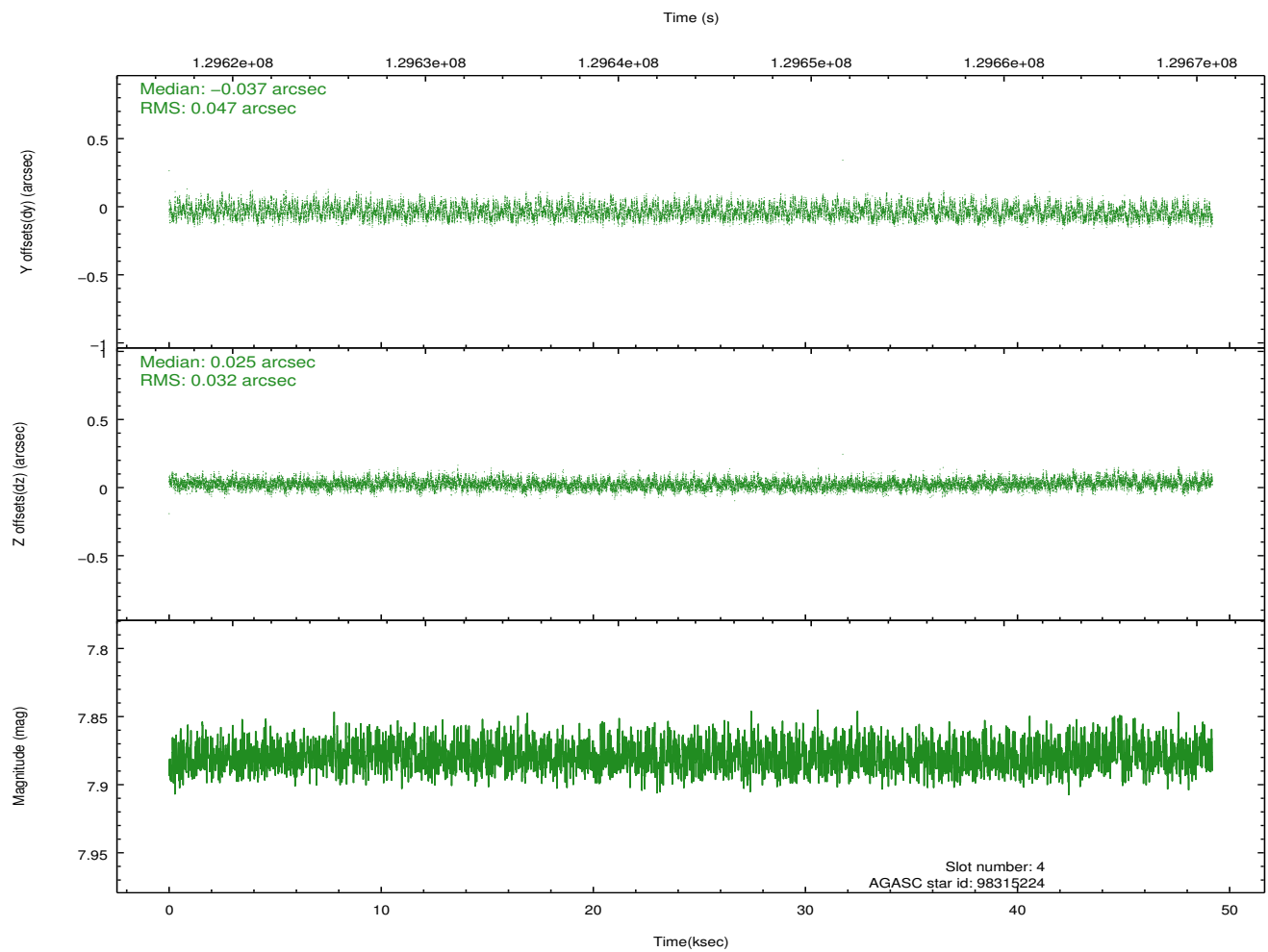
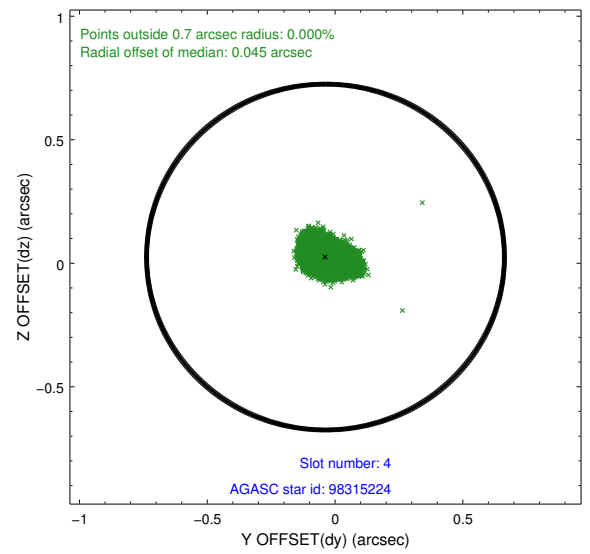
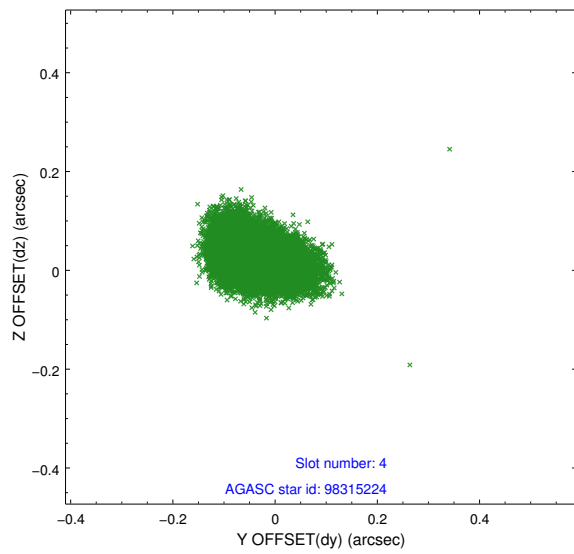
slot	status	id	mag	n_pts	med_dy	med_dz	dr1	dr2	ra	dec	mean_y	mean_z
0	FID	ACIS-I-1	7.25	11995	-0.005	0.008	0.007	0.012	0.000000	0.000000	937.23	-829.92
1	FID	ACIS-I-5	7.24	11994	-0.045	0.046	0.006	0.011	0.000000	0.000000	-1810.89	1067.67
2	FID	ACIS-I-6	7.26	11996	-0.042	0.016	0.007	0.012	0.000000	0.000000	402.80	1712.08
3	GUIDE	98313304	7.93	23988	0.023	0.042	0.050	0.082	100.155546	9.595190	939.17	-275.99
4	GUIDE	98315224	7.88	23991	-0.037	0.025	0.061	0.097	100.672922	10.331603	-1308.46	2035.18
5	GUIDE	97793672	8.59	23976	0.136	-0.168	0.081	0.134	99.657664	9.160198	2131.84	-2315.19
6	GUIDE	98315960	8.75	23986	-0.056	0.068	0.070	0.111	100.661368	10.107192	-523.46	1839.83
7	GUIDE	98315496	9.04	23975	-0.067	0.035	0.075	0.119	99.895895	10.240611	-1518.94	-728.50

2.4 Star Slots

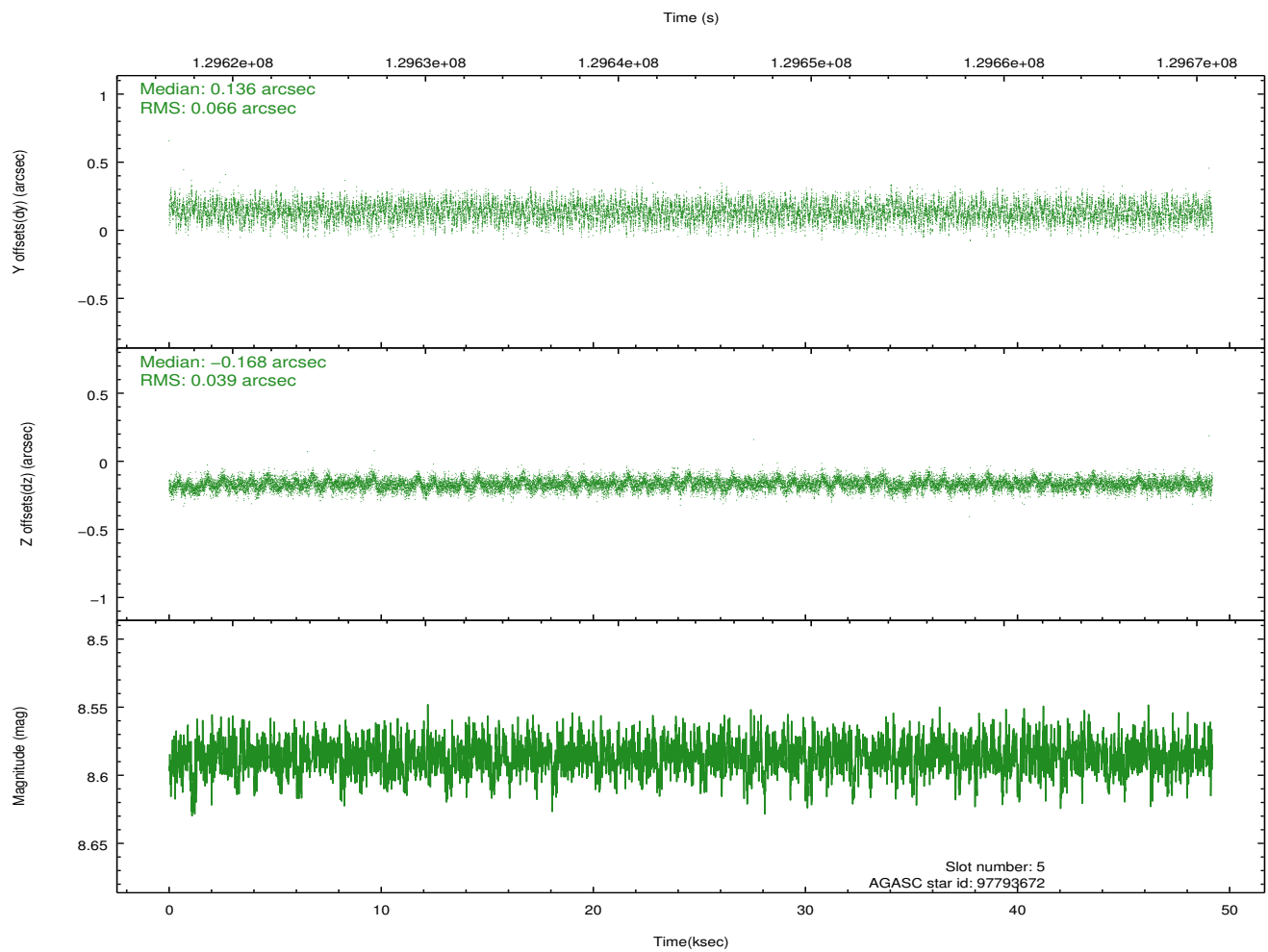
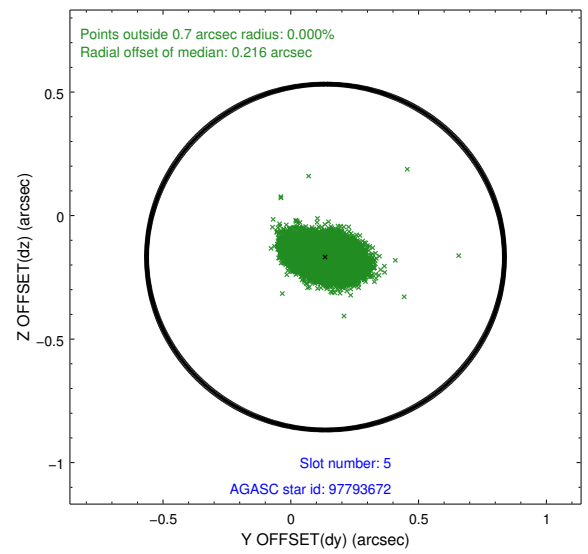
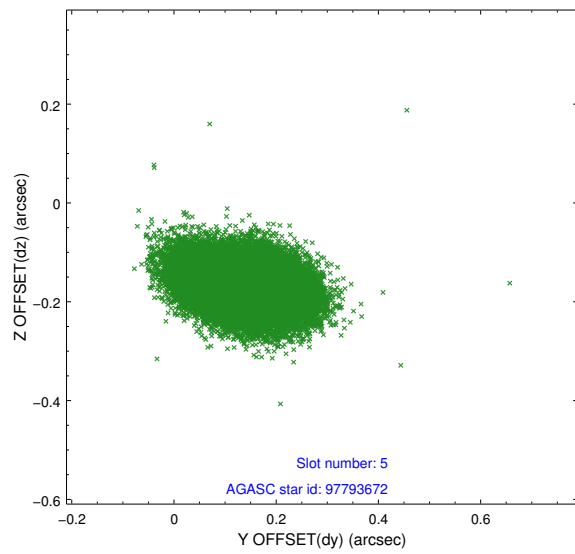
2.4.1 Slot 3



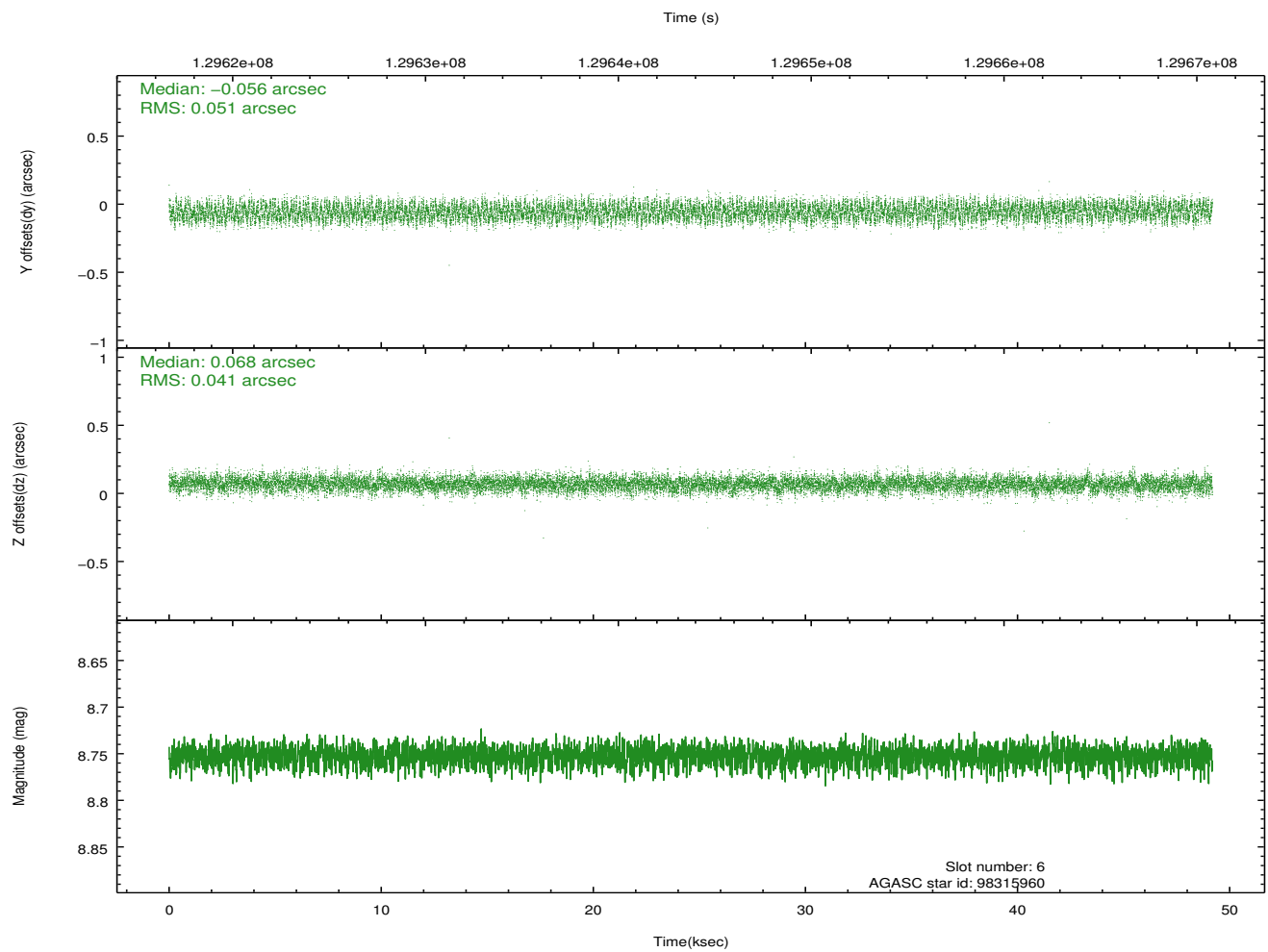
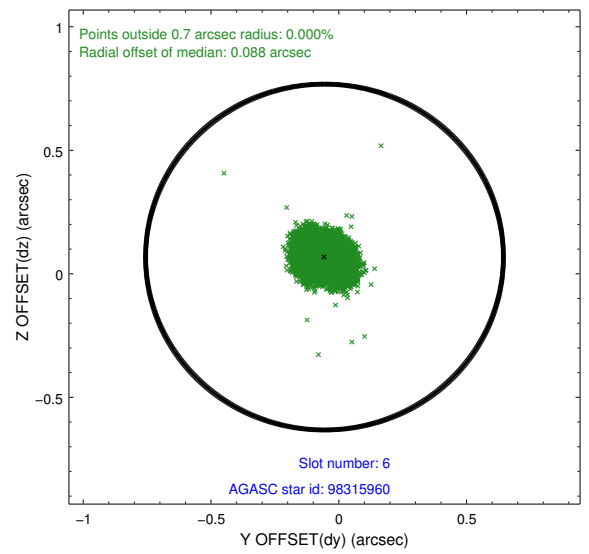
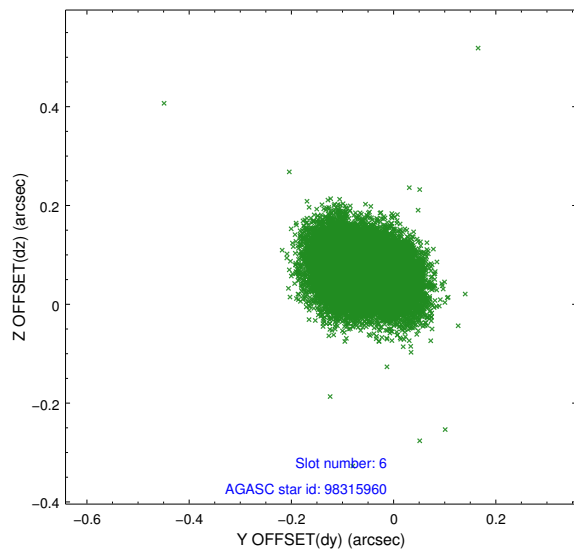
2.4.2 Slot 4



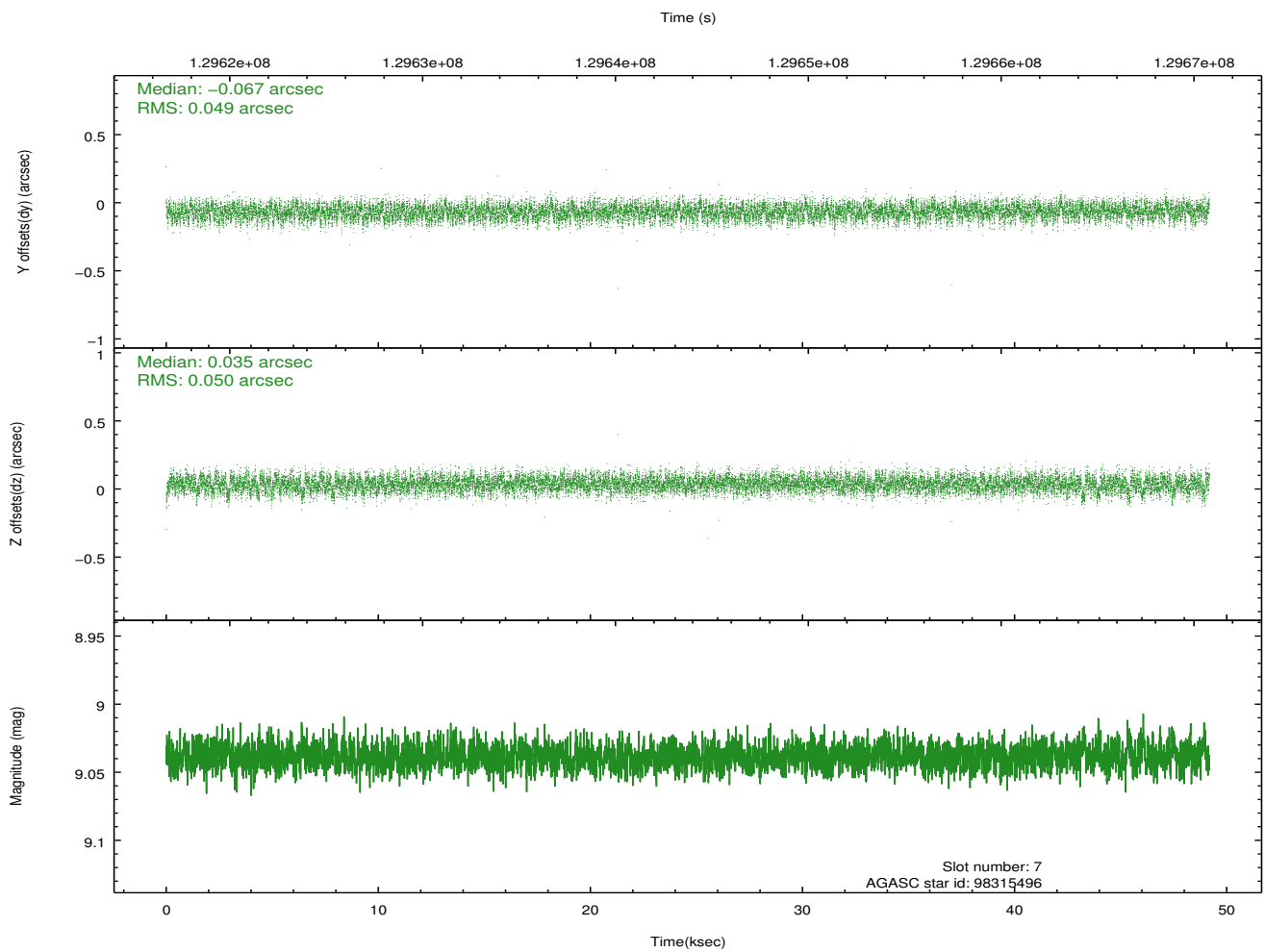
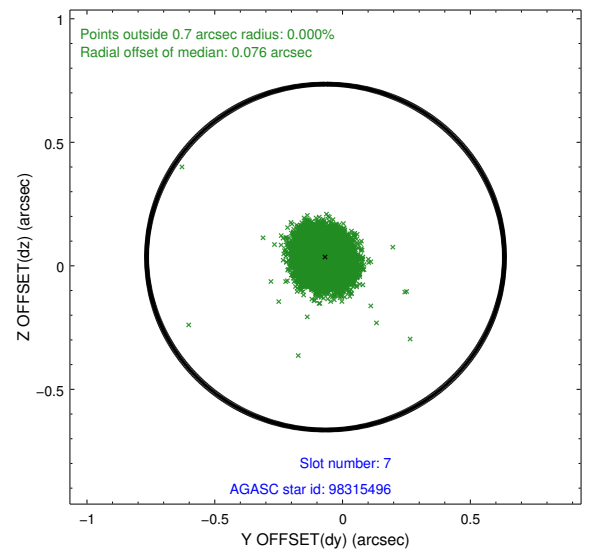
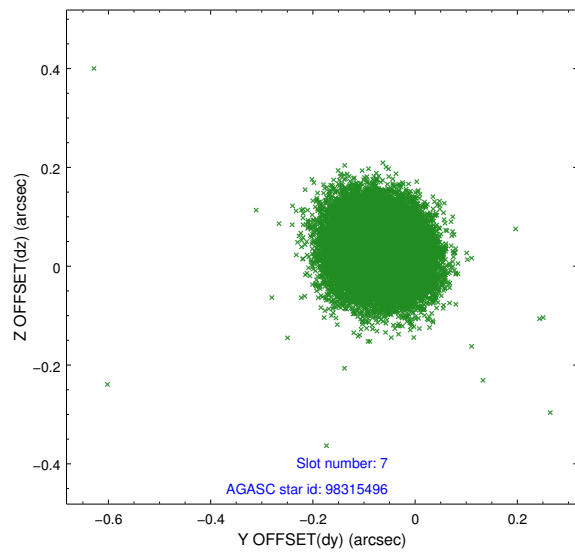
2.4.3 Slot 5



2.4.4 Slot 6

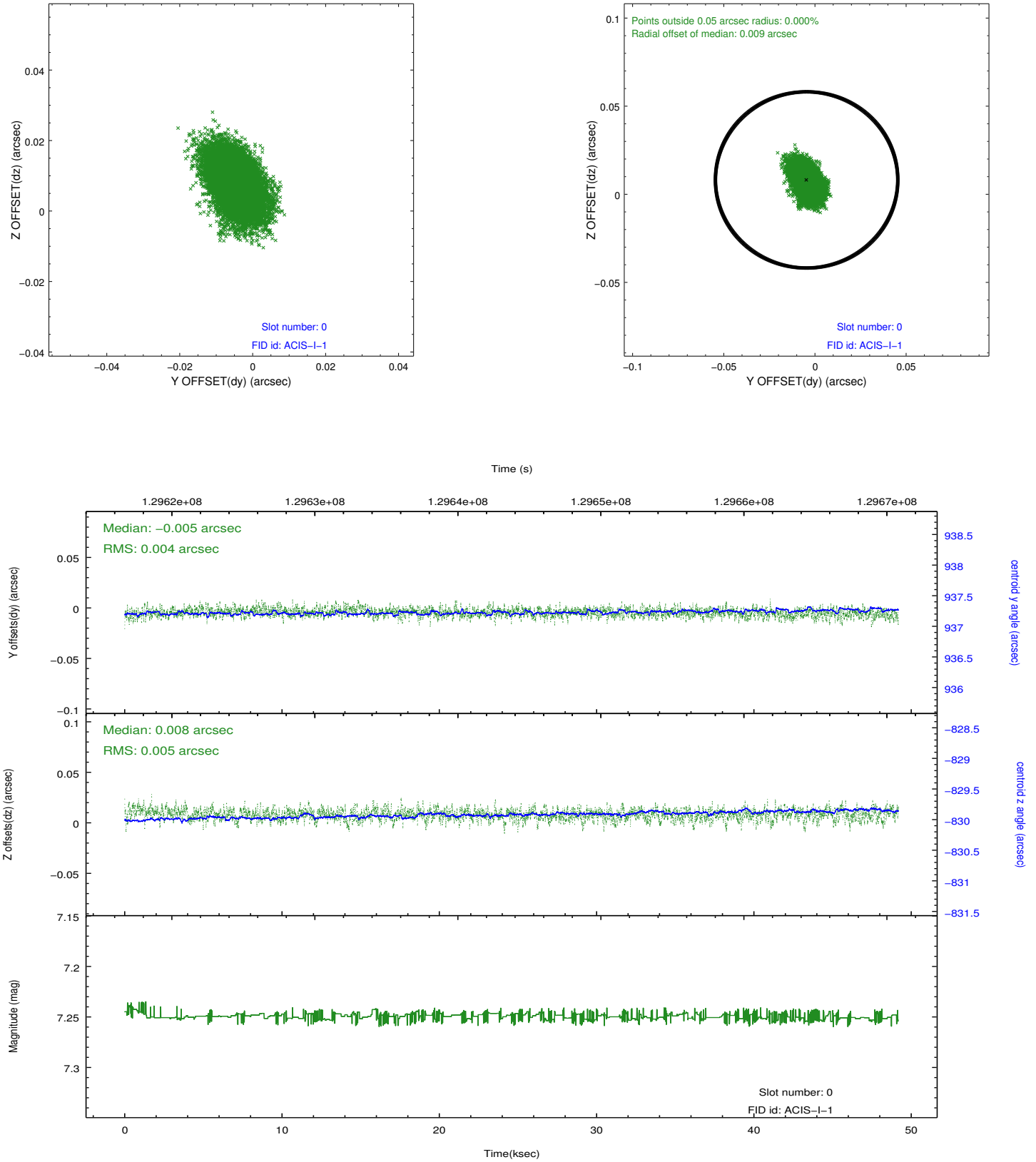


2.4.5 Slot 7

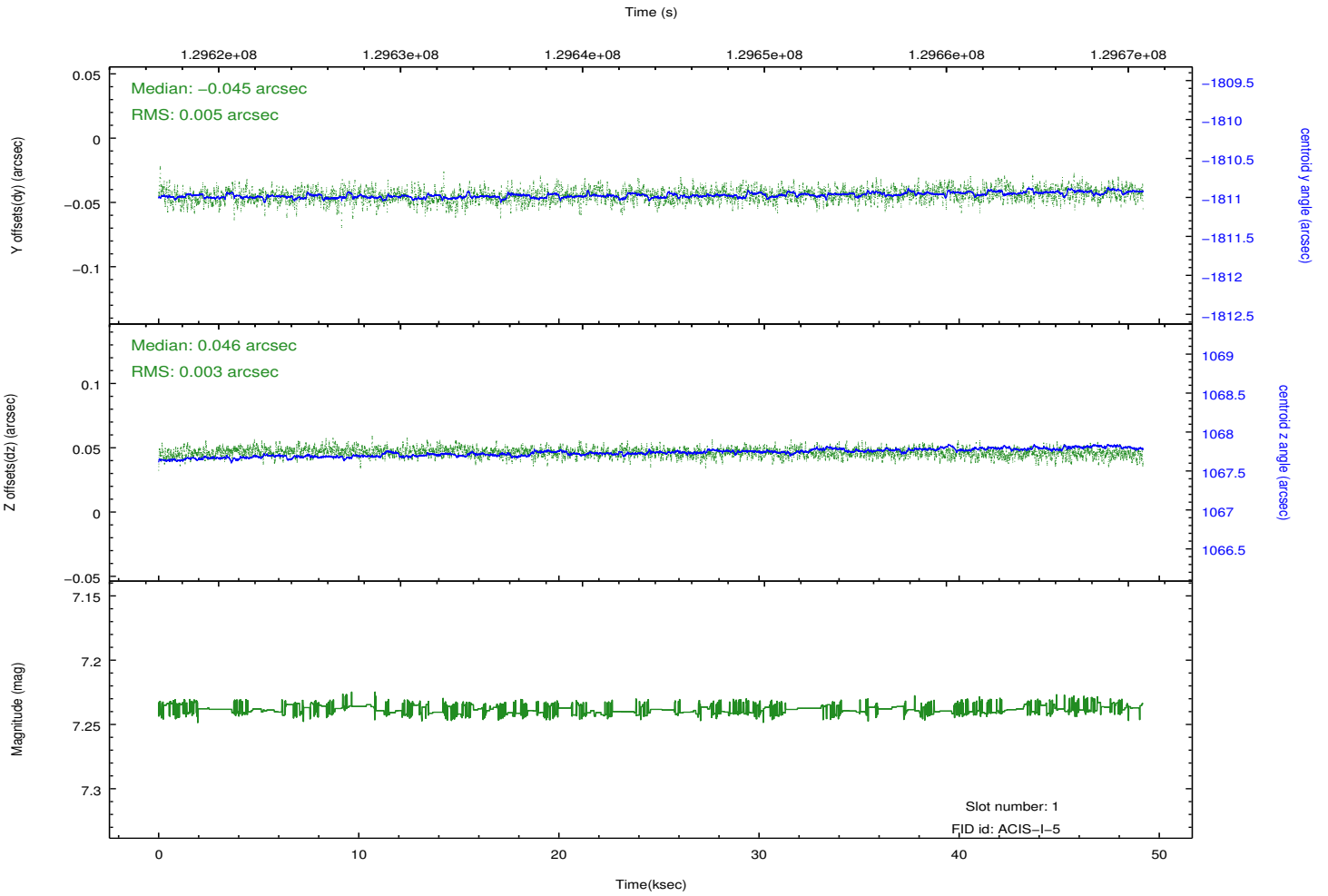
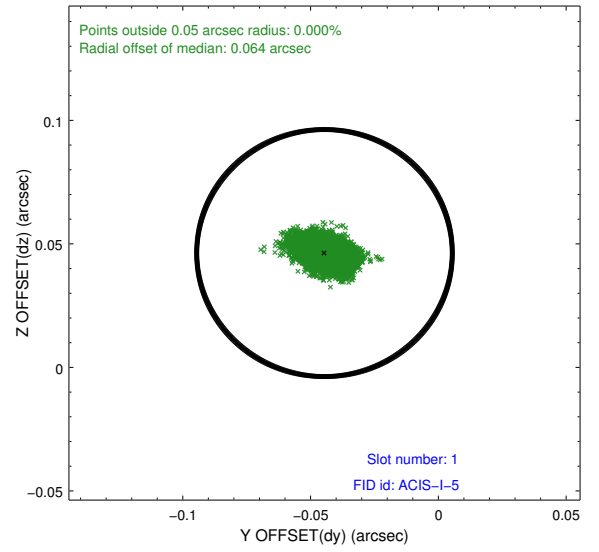
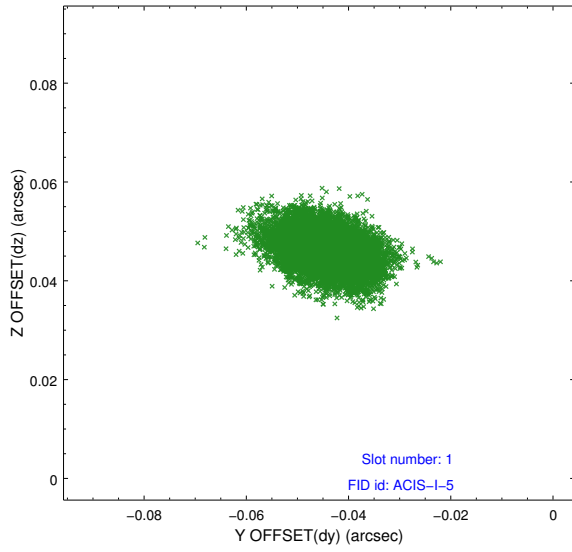


2.5 FID Slots

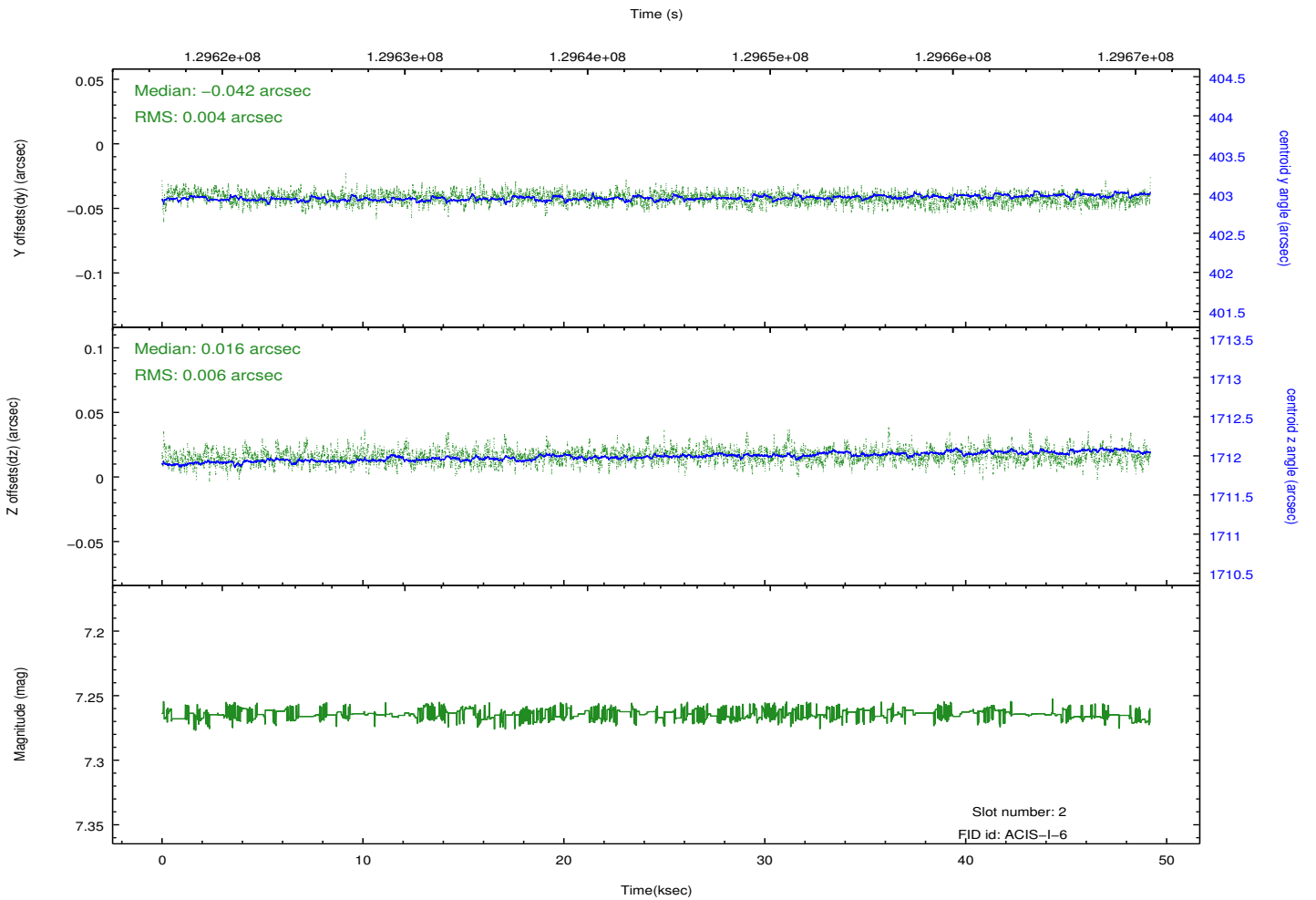
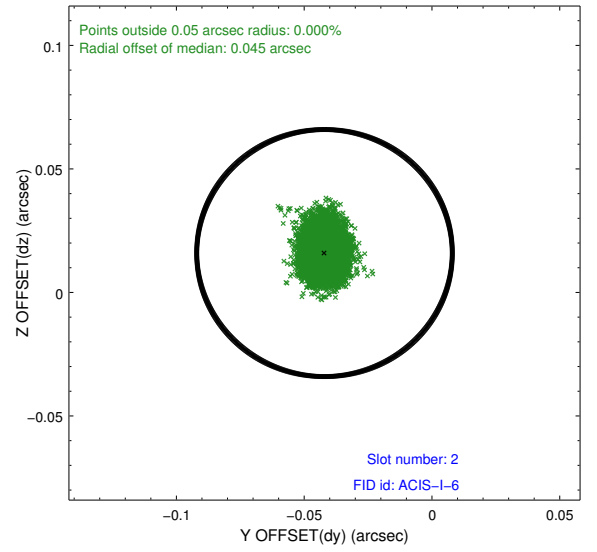
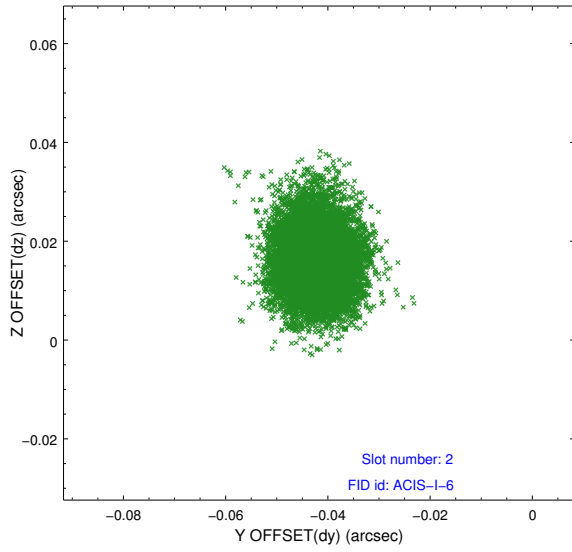
2.5.1 Slot 0



2.5.2 Slot 1



2.5.3 Slot 2



A Summary

A.1 Status

V&V Scientist	Jen Lauer
V&V Date (YYYY-MM-DD)	2012.10.04
V&V Edition	1
V&V Disposition and Status	OK
V&V Charge Time	48.755

A.2 Comments