

V&V Reference Report

L2 ASCDS Version : 8.4.5

Observation 2880 - L2 Version 3
Chandra X-Ray Center

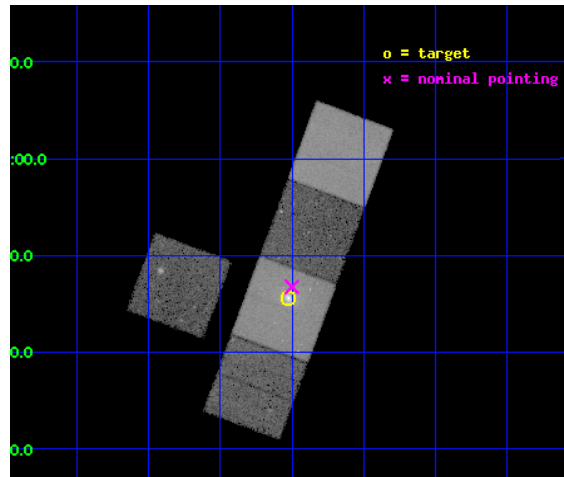
L2 Processing Date : Oct 12 2012

Contents

1	Front	2
2	OBI	3
2.1	OBI	3
2.1.1	Images	3
2.1.2	Bias	3
2.1.3	Parameters	4
2.1.4	Events	4
2.2	Compared Parameters	5
2.3	Aspect	6
2.4	Star Slots	9
2.4.1	Slot 3	9
2.4.2	Slot 4	10
2.4.3	Slot 5	11
2.4.4	Slot 6	12
2.4.5	Slot 7	13
2.5	FID Slots	14
2.5.1	Slot 0	14
2.5.2	Slot 1	15
2.5.3	Slot 2	16
A	Summary	17
A.1	Status	17
A.2	Comments	17

1 Front

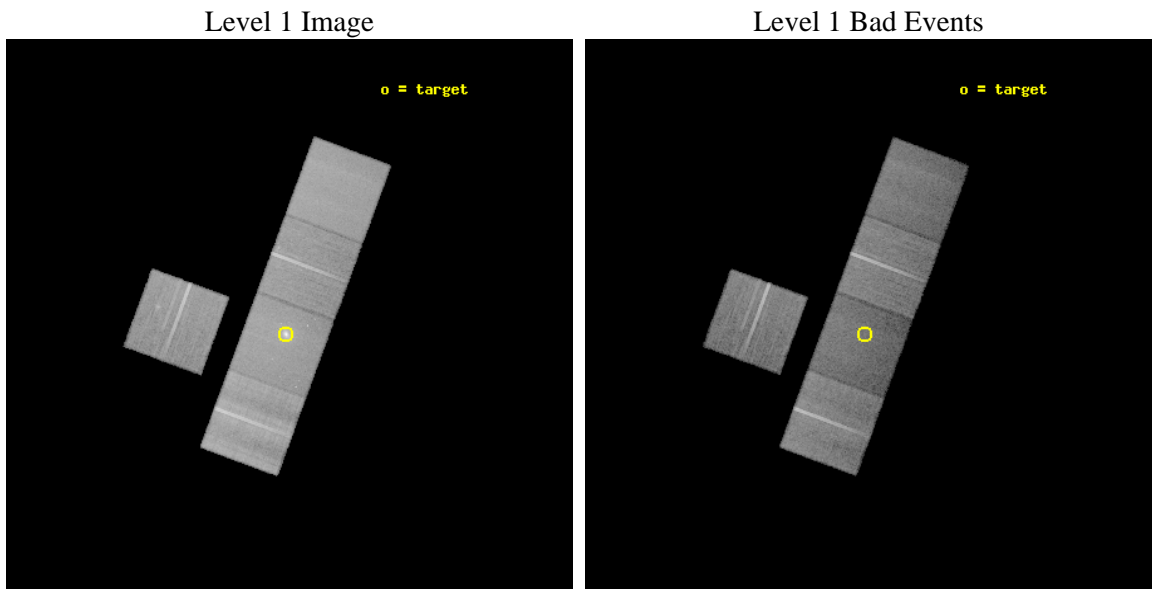
seq_num	600217	Sequence number
obs_id	2880	Observation id
title	STELLAR MASS LOSS VERSUS EXTERNAL ACCRETION IN X-RAY BRIGHT ELLIPTICALS	Proposal title
observer	Dr. CRAIG SARAZIN	Principal investigator
object	NGC533	Source name
dtcycle	0	
cycle	P	events from which exps? Prim/Second/Both
ra_targ	21.380833	Observer's specified target RA [deg]
dec_targ	1.759111	Observer's specified target Dec [deg]
ra_nom	21.375267542378	Nominal RA [deg]
dec_nom	1.779149244736	Nominal Dec [deg]
roll_nom	110.32456419524	Nominal Roll [deg]
revision	3	Processing version of data
ontime	38102.09992671	Sum of GTIs [s]
livetime	37604.26794081	Livetime [s]
ontime3	38098.958966464	Sum of GTIs [s]
ontime5	38102.09992671	Sum of GTIs [s]
ontime6	38102.09992671	Sum of GTIs [s]
ontime7	38102.09992671	Sum of GTIs [s]
ontime8	38098.958986402	Sum of GTIs [s]
l2events	300703	Number of level 2 events



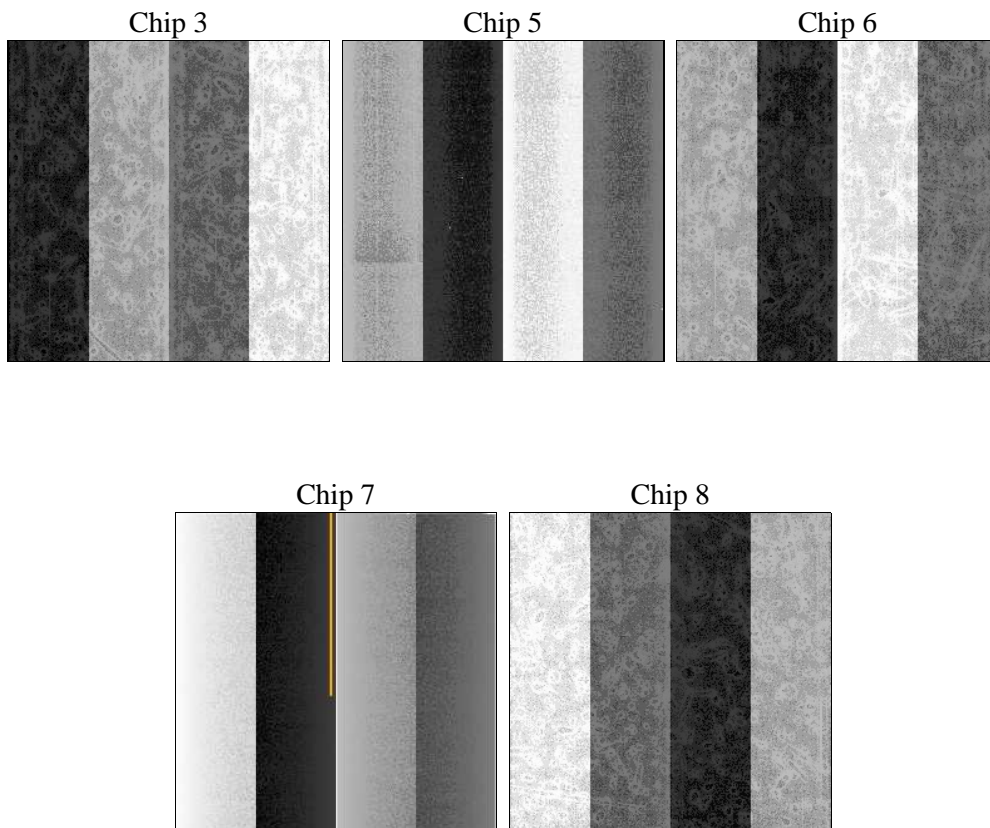
2 OBI

2.1 OBI

2.1.1 Images



2.1.2 Bias



2.1.3 Parameters

obi_num	0	Obi number	sched_exp_time	38000.000000	[s] Scheduled observation exposure time
ascdsver	8.4.5	Processing system revision	ontime	38102.09992671	Sum of GTIs [s]
caldbver	4.5.2	 	ontime3	38098.958966464	Sum of GTIs [s]
date	2012-10-12T00:36:13	Date and time of file creation	ontime5	38102.09992671	Sum of GTIs [s]
revision	3	Processing version of data	ontime6	38102.09992671	Sum of GTIs [s]
			ontime7	38102.09992671	Sum of GTIs [s]
			ontime8	38098.958986402	Sum of GTIs [s]
			l1events	1153760	Number of level 1 events

2.1.4 Events

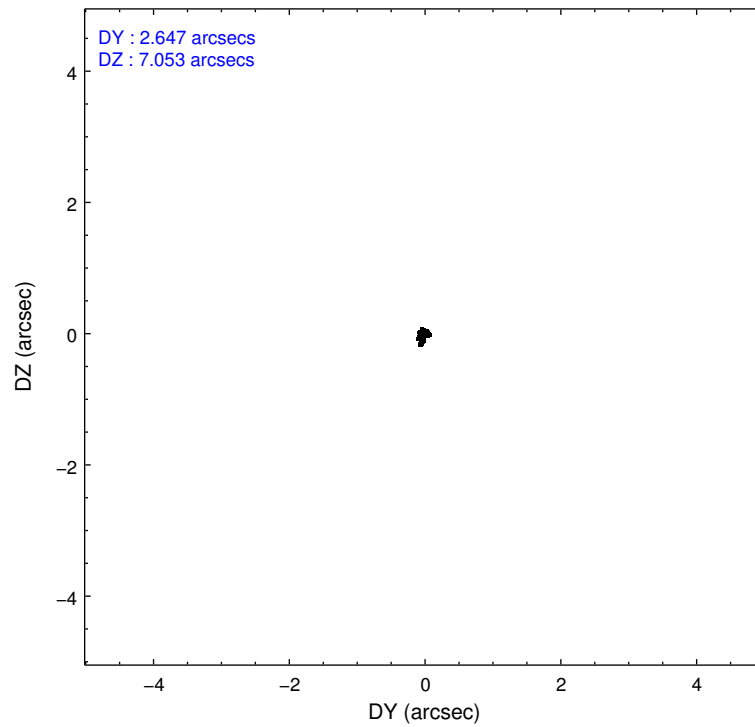
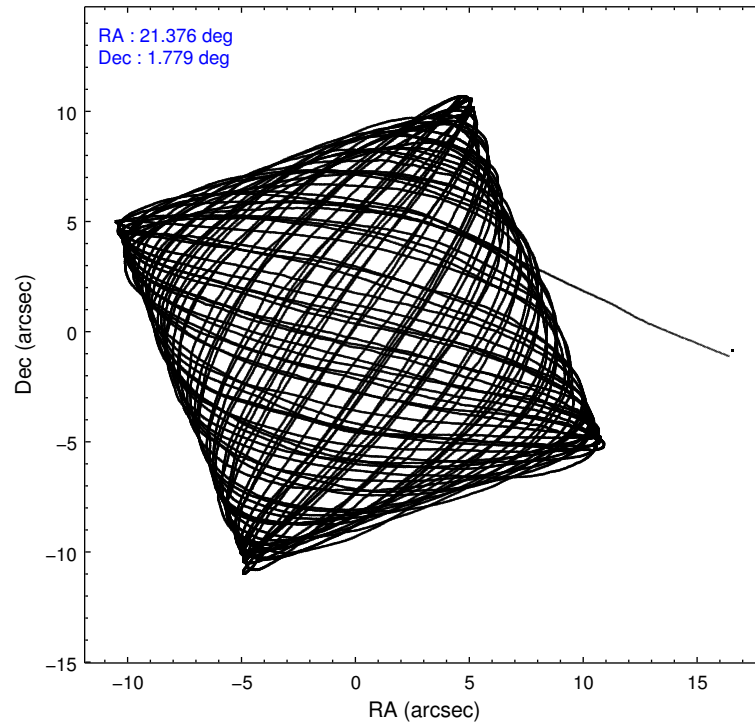
	ccd 3	ccd 5	ccd 6	ccd 7	ccd 8
level 1 events	194432	246331	202065	233636	277296
rejected events	174491	125774	178601	109865	191793
rejected %	89%	51%	88%	47%	69%

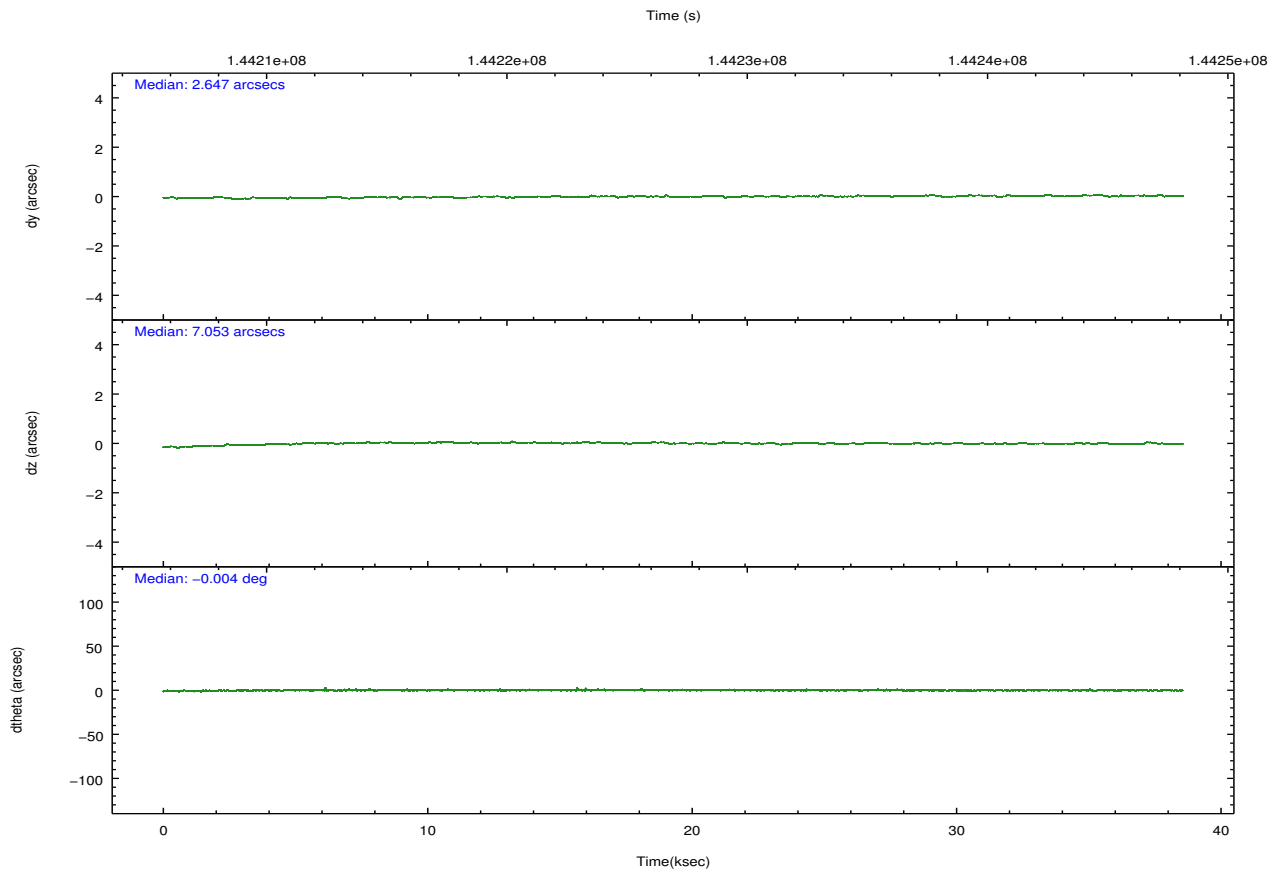
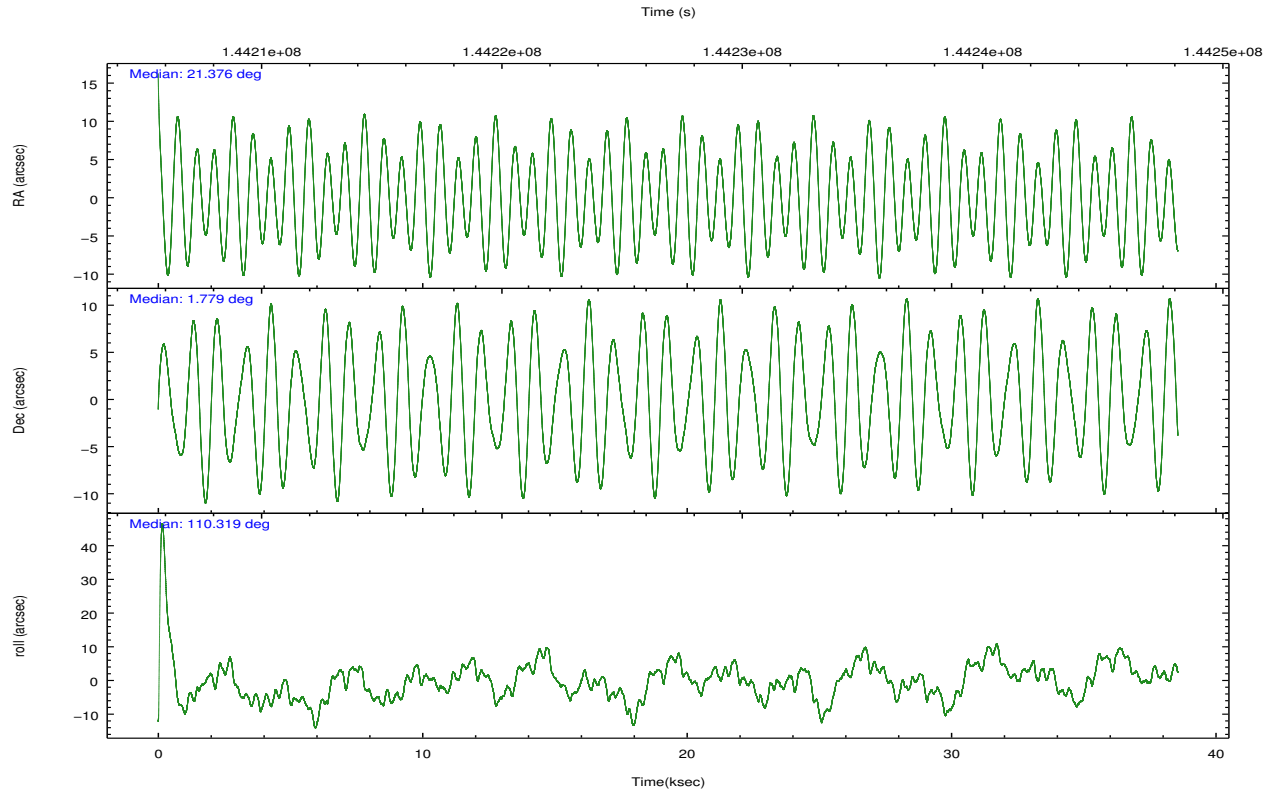
	ccd 3	ccd 5	ccd 6	ccd 7	ccd 8
grade 0 events	8011	8479	9699	18545	26341
	4%	3%	4%	7%	9%
grade 1 events	87	198	97	181	209
	0%	0%	0%	0%	0%
grade 2 events	4047	36125	4743	26785	15474
	2%	14%	2%	11%	5%
grade 3 events	2060	5827	2319	12502	12010
	1%	2%	1%	5%	4%
grade 4 events	2061	5734	2221	12356	10657
	1%	2%	1%	5%	3%
grade 5 events	6518	19711	7101	21732	10490
	3%	8%	3%	9%	3%
grade 6 events	3763	64397	4482	53591	21040
	1%	26%	2%	22%	7%
grade 7 events	167885	105860	171403	87944	181075
	86%	42%	84%	37%	65%

2.2 Compared Parameters

Parameter	Planned	Actual	Parameter	Planned	Actual
Instrument	ACIS	ACIS	Obspar format version number	7	7
Detector	ACIS-35678	ACIS-35678	Obspar file type	PREDICTED	ACTUAL
Grating	NONE	NONE	Obspar update status	NONE	UPDATED
Data mode	VFAINT	VFAINT	Number of optional ACIS chips dropped	0	0
Observation mode	POINTING	POINTING	On-chip summing requested	N	N
[deg] Pointing RA	21.396464	21.37526754237796	Subarray requested	NONE	NONE
[deg] Pointing Dec	1.762012	1.779149244735962	Alternating exposures requested	N	N
[deg] Pointing Roll	110.167301	110.3245641952428	[s] Primary exposure time	0.000000	3.1
[mm] SIM focus pos	-0.684267	-0.6828225247311905			
[mm] SIM defocus	0	0.001444936568705701			
[mm] SIM translation stage pos	-190.132523	-190.1400660498719			
[mm] SIM translation stage offset	0	0.00754346686406393			
[s] Observation start time (MET)	144208192.184000	144207037.9425			
Observation start date	2002-07-28T01:48:48	2002-07-28T01:30:37			
[s] Observation end time (MET)	144246192.184000	144246996.03164			
Observation end date	2002-07-28T12:22:08	2002-07-28T12:36:36			
Read mode	TIMED	TIMED			

2.3 Aspect



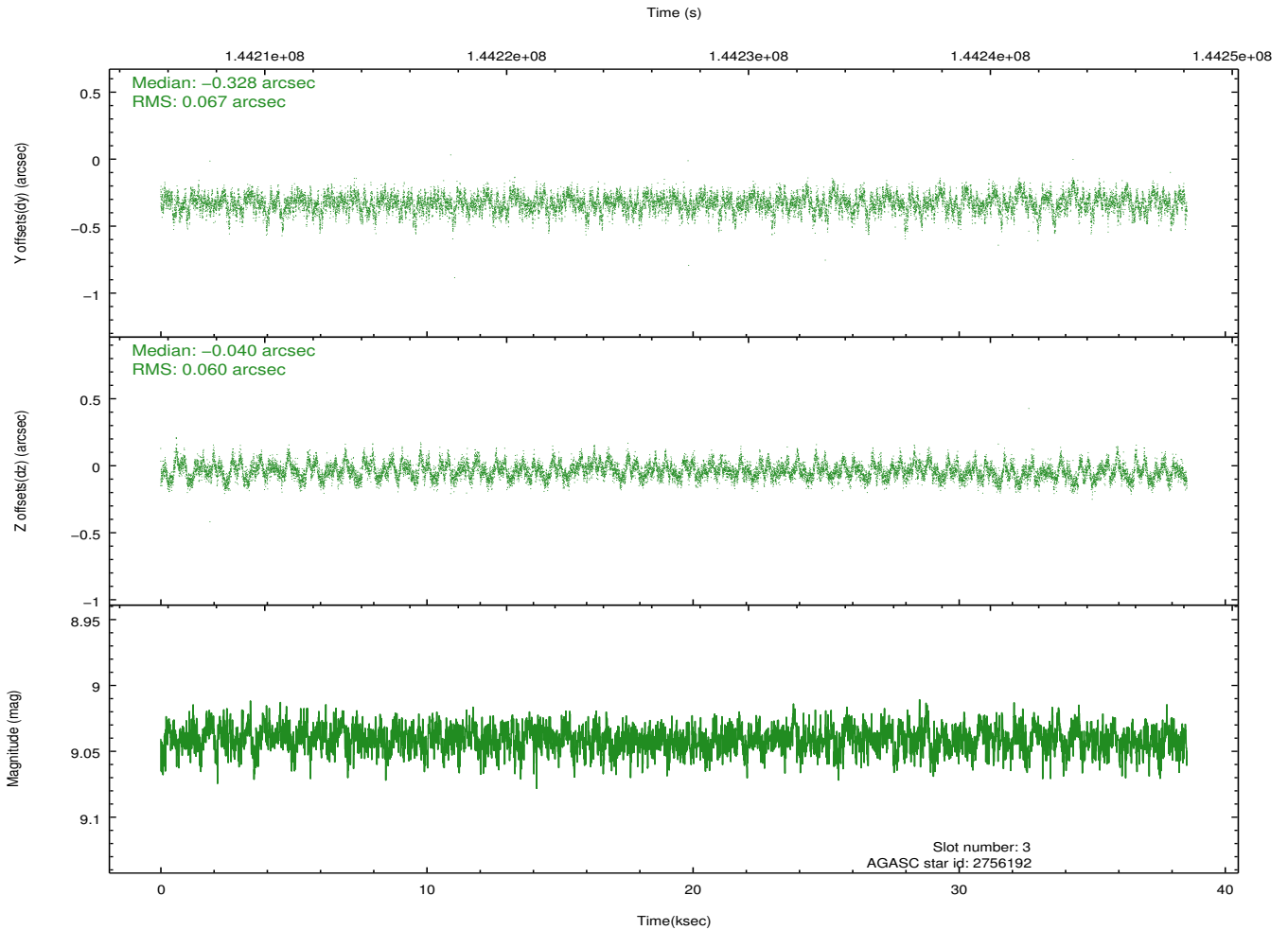
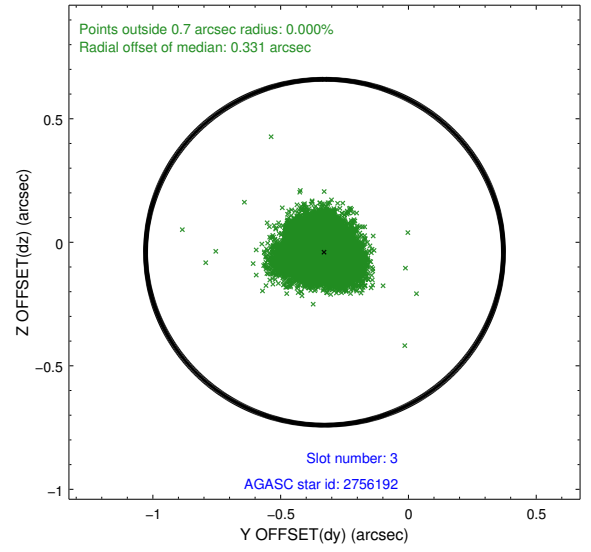
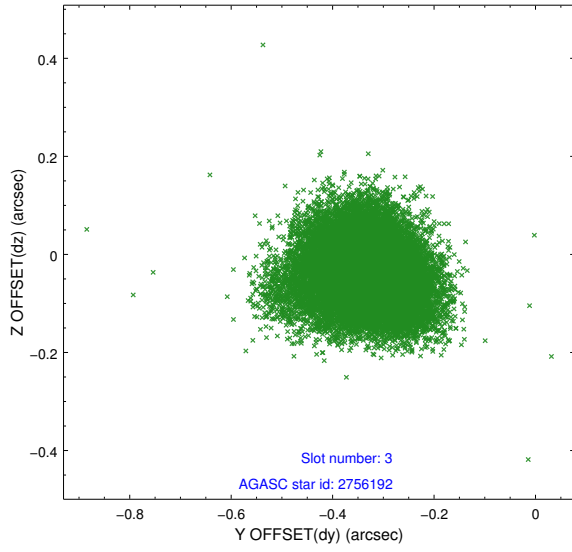


Slot Statistics

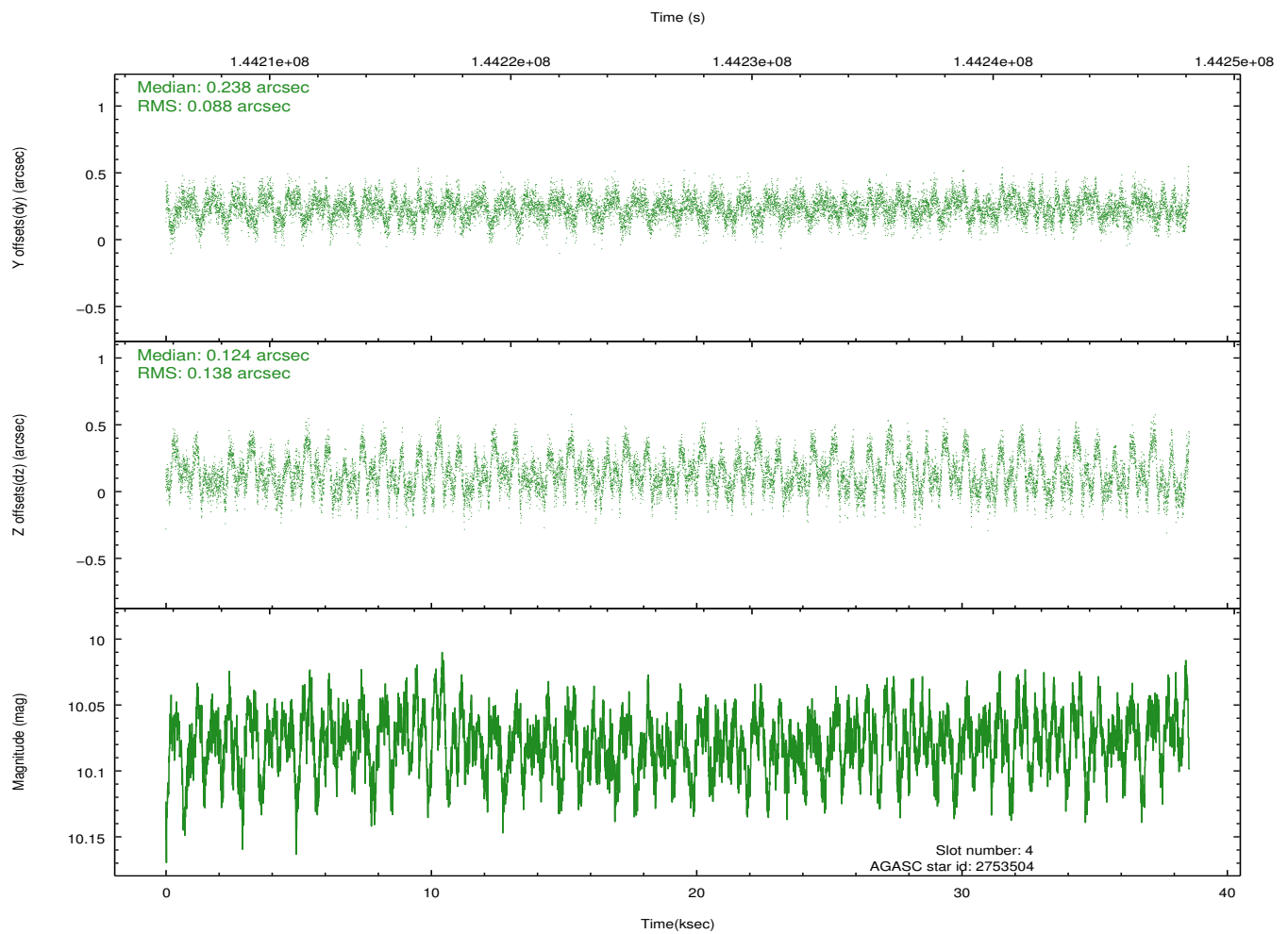
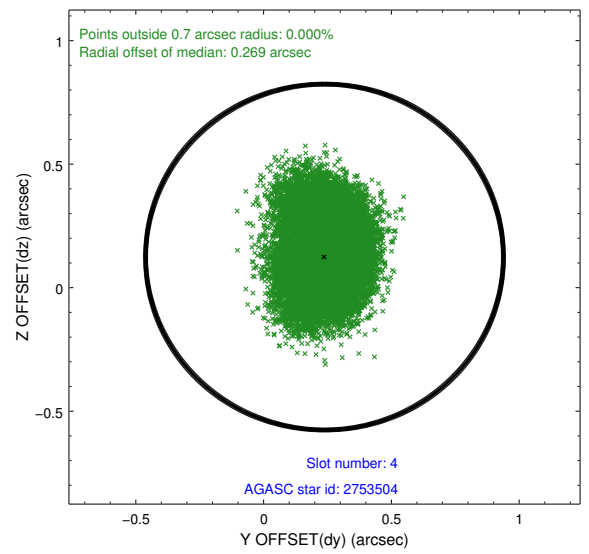
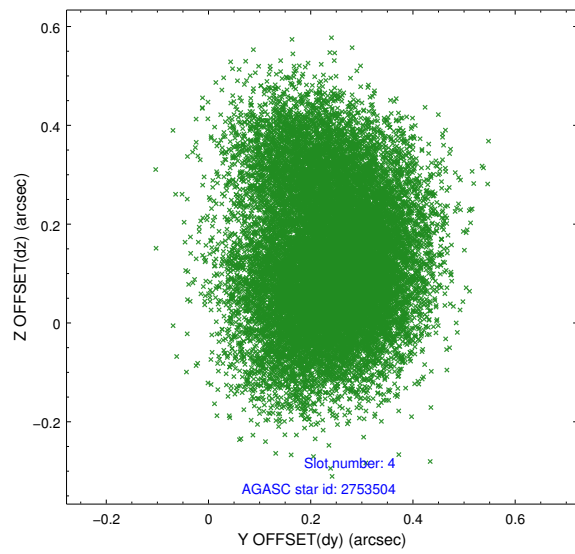
slot	status	id	mag	n_pts	med_dy	med_dz	dr1	dr2	ra	dec	mean_y	mean_z
0	FID	ACIS-S-2	7.11	9405	-0.018	0.009	0.006	0.011	0.000000	0.000000	-755.29	-1728.21
1	FID	ACIS-S-4	7.20	9406	-0.026	0.006	0.005	0.009	0.000000	0.000000	2157.97	180.26
2	FID	ACIS-S-5	7.24	9407	0.013	-0.006	0.007	0.011	0.000000	0.000000	-1808.07	173.93
3	GUIDE	2756192	9.04	18808	-0.328	-0.040	0.095	0.154	20.982348	2.298438	2326.85	734.12
4	GUIDE	2753504	10.08	18793	0.238	0.124	0.174	0.285	21.721458	1.297652	-1971.24	-520.32
5	GUIDE	2753960	9.94	18703	-0.015	-0.182	0.168	0.264	20.904906	1.901728	1082.61	1488.00
6	GUIDE	2761928	9.96	18609	-0.137	0.123	0.147	0.252	21.376870	2.420884	2251.62	-749.78
7	GUIDE	2758752	9.52	18804	0.245	-0.040	0.125	0.199	21.515614	1.127525	-2290.84	386.11

2.4 Star Slots

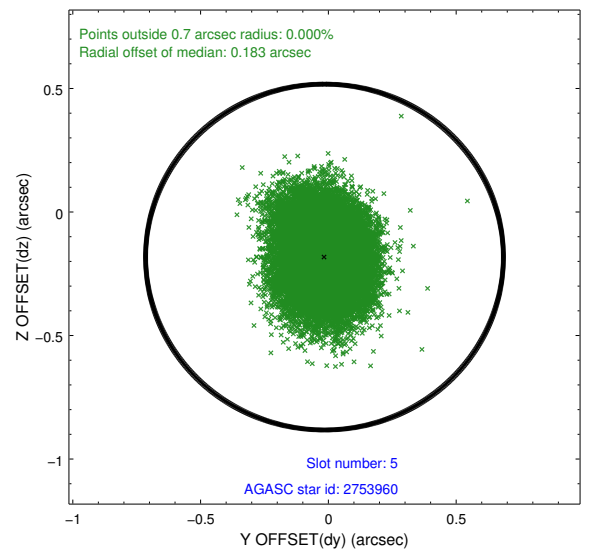
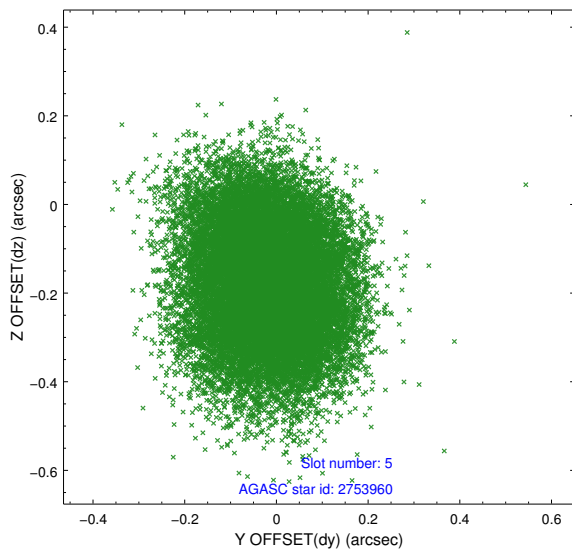
2.4.1 Slot 3



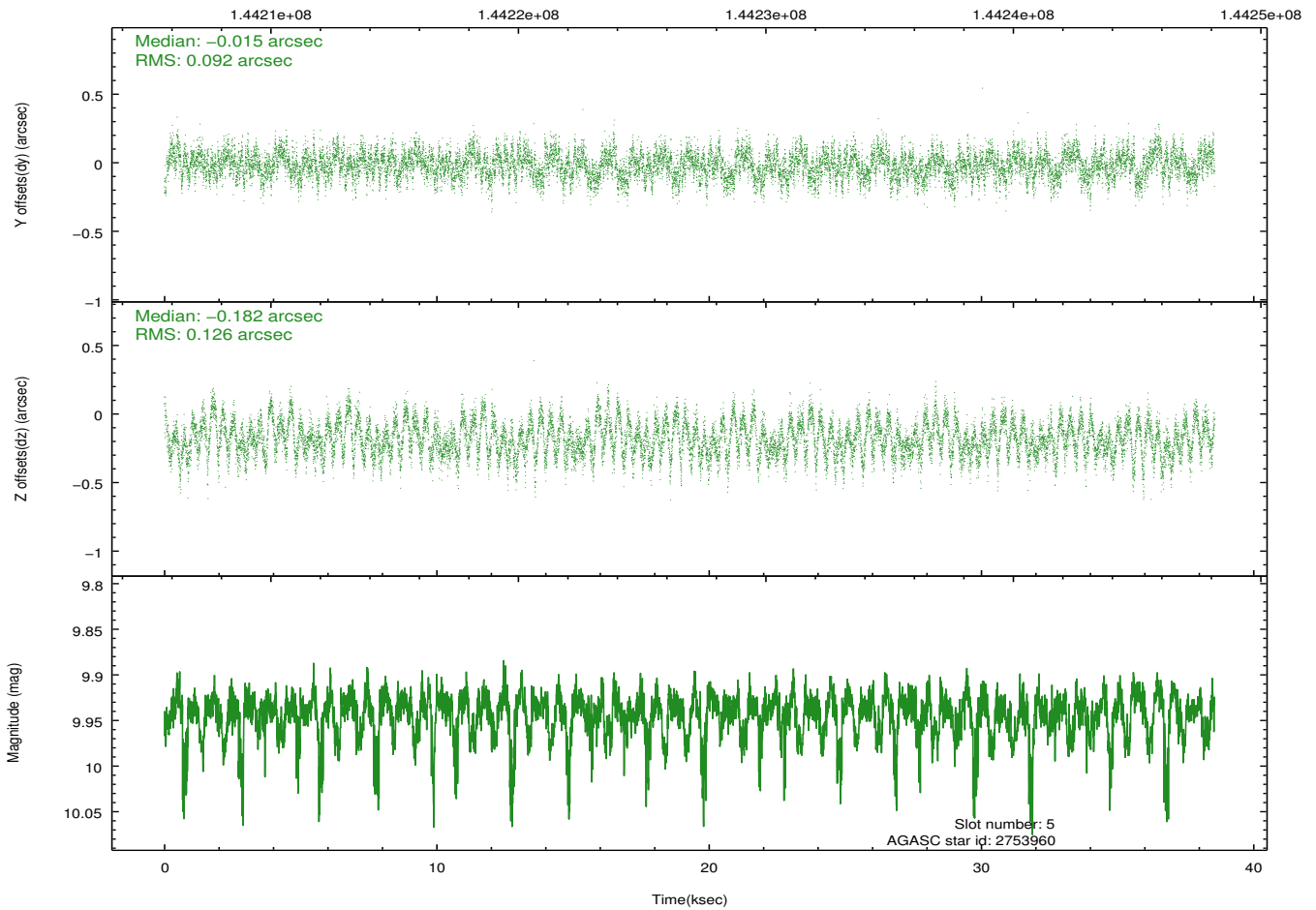
2.4.2 Slot 4



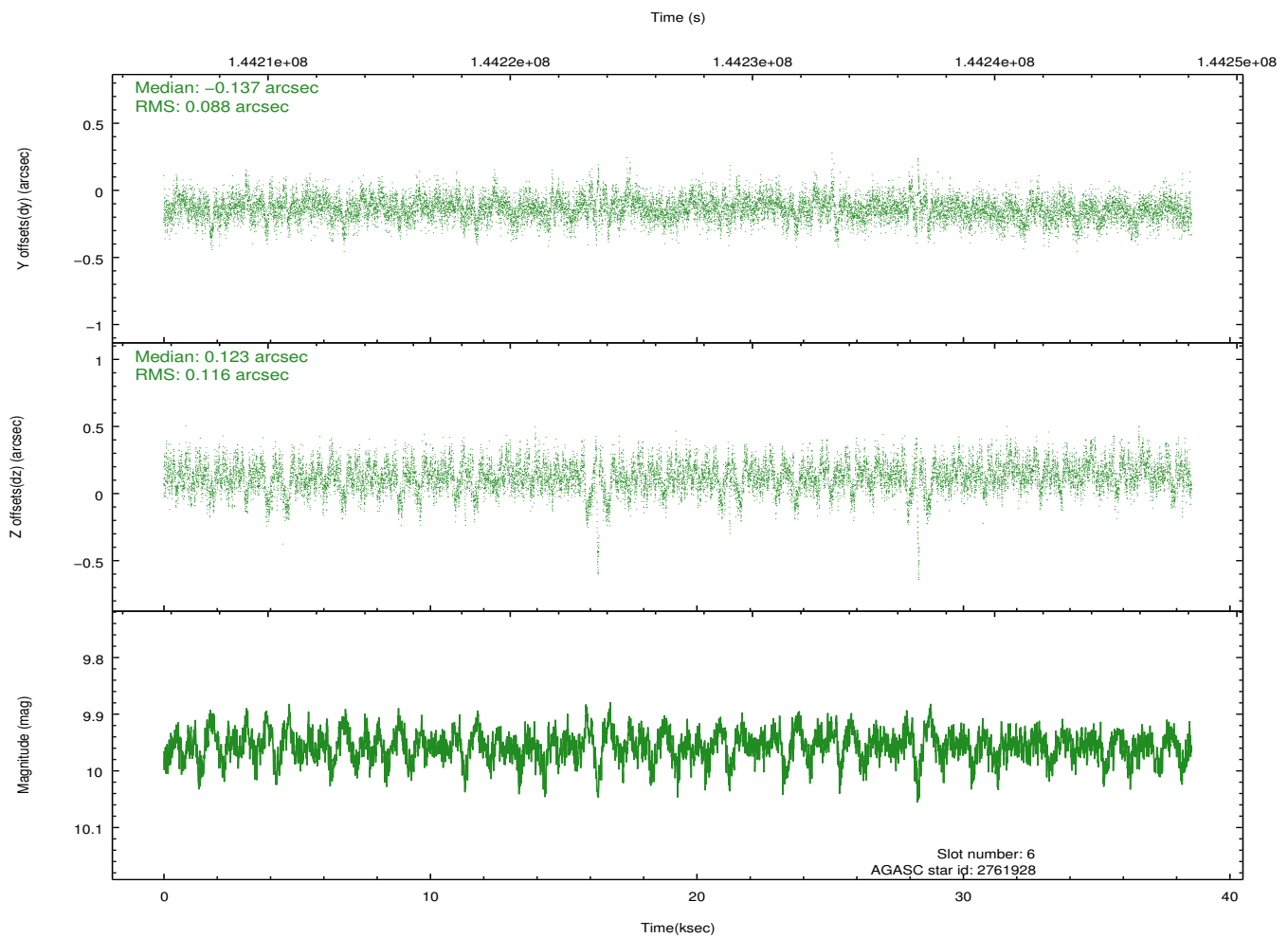
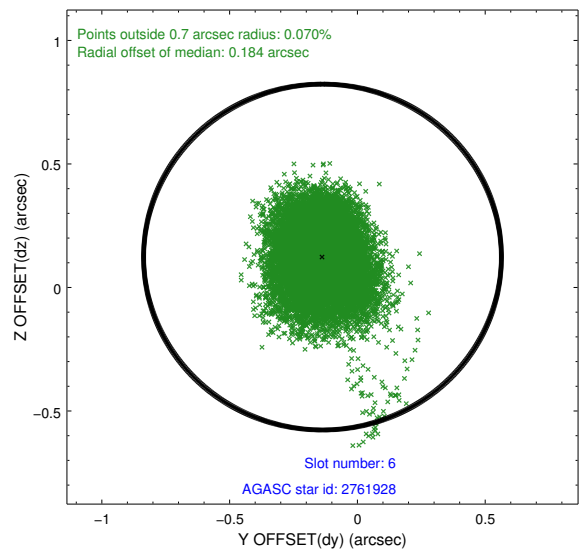
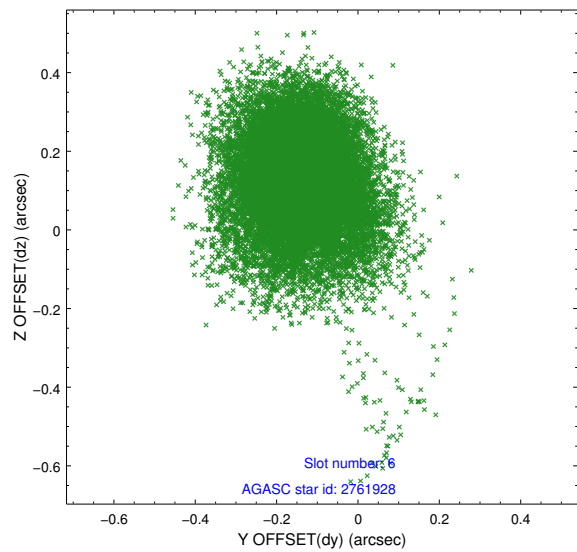
2.4.3 Slot 5



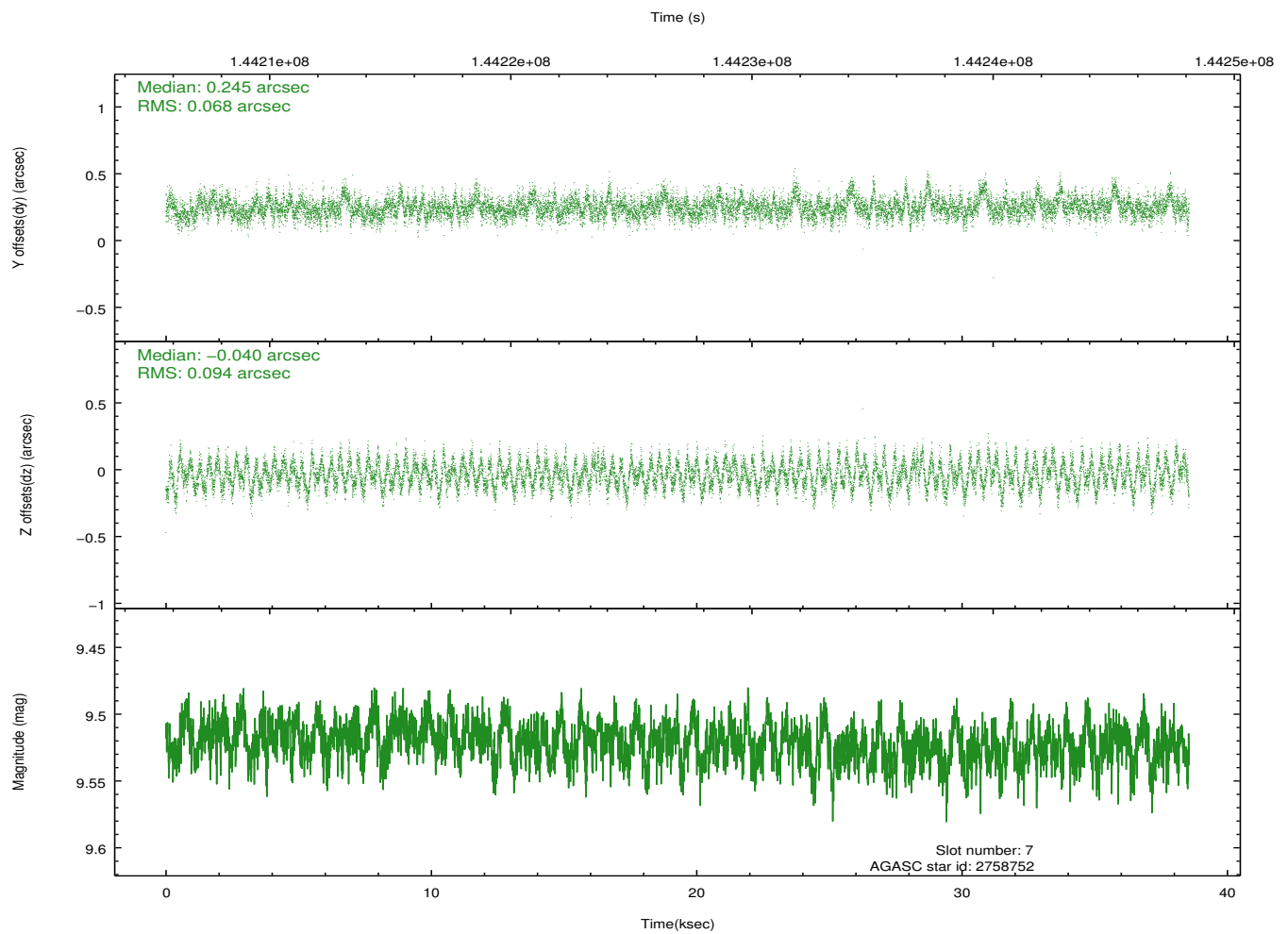
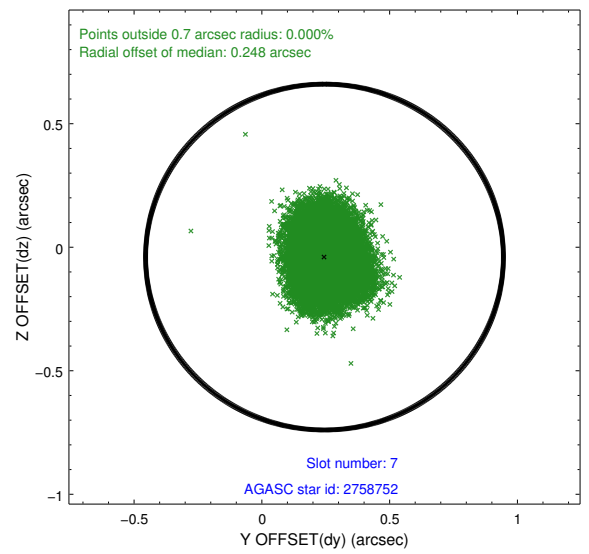
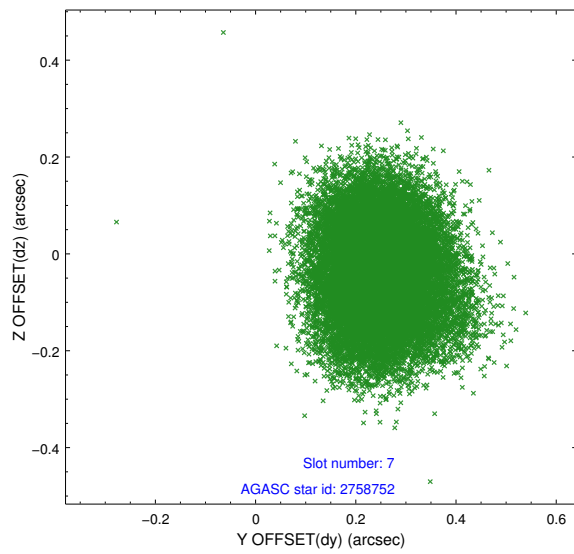
Time (s)



2.4.4 Slot 6

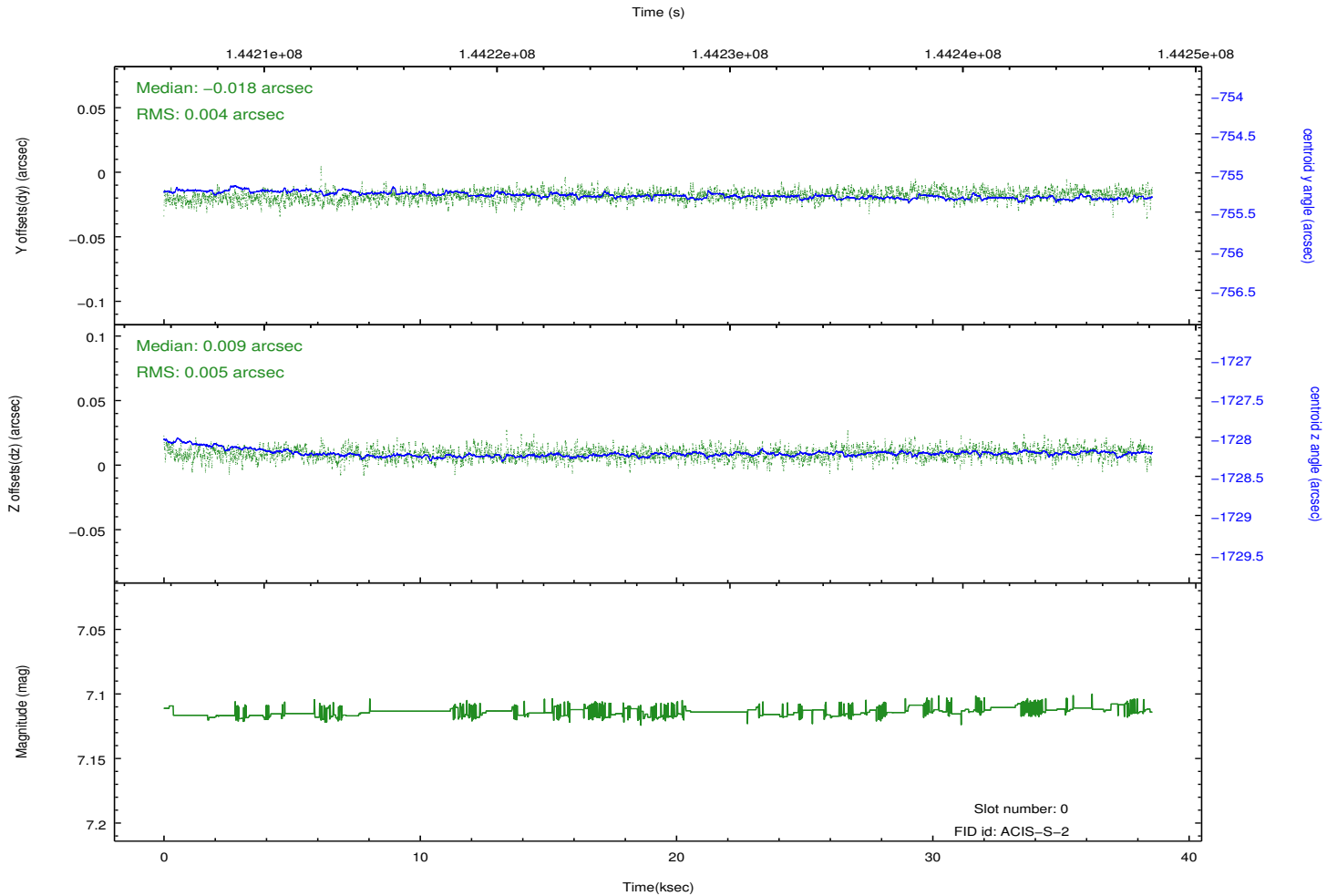
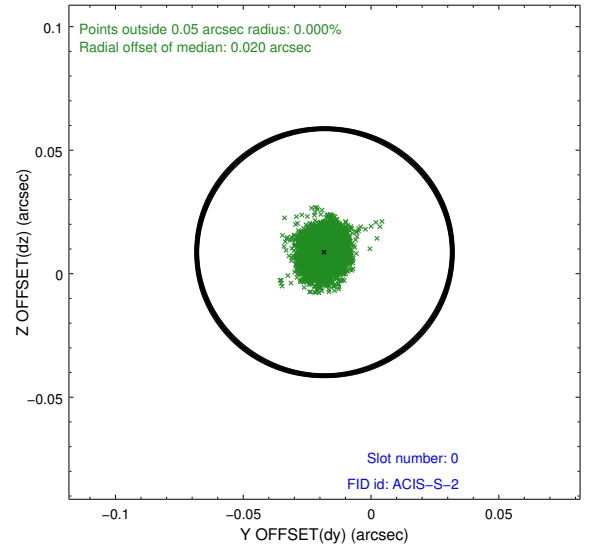
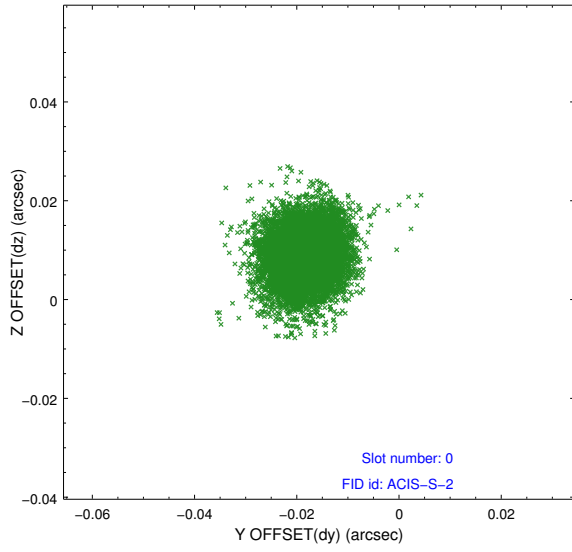


2.4.5 Slot 7

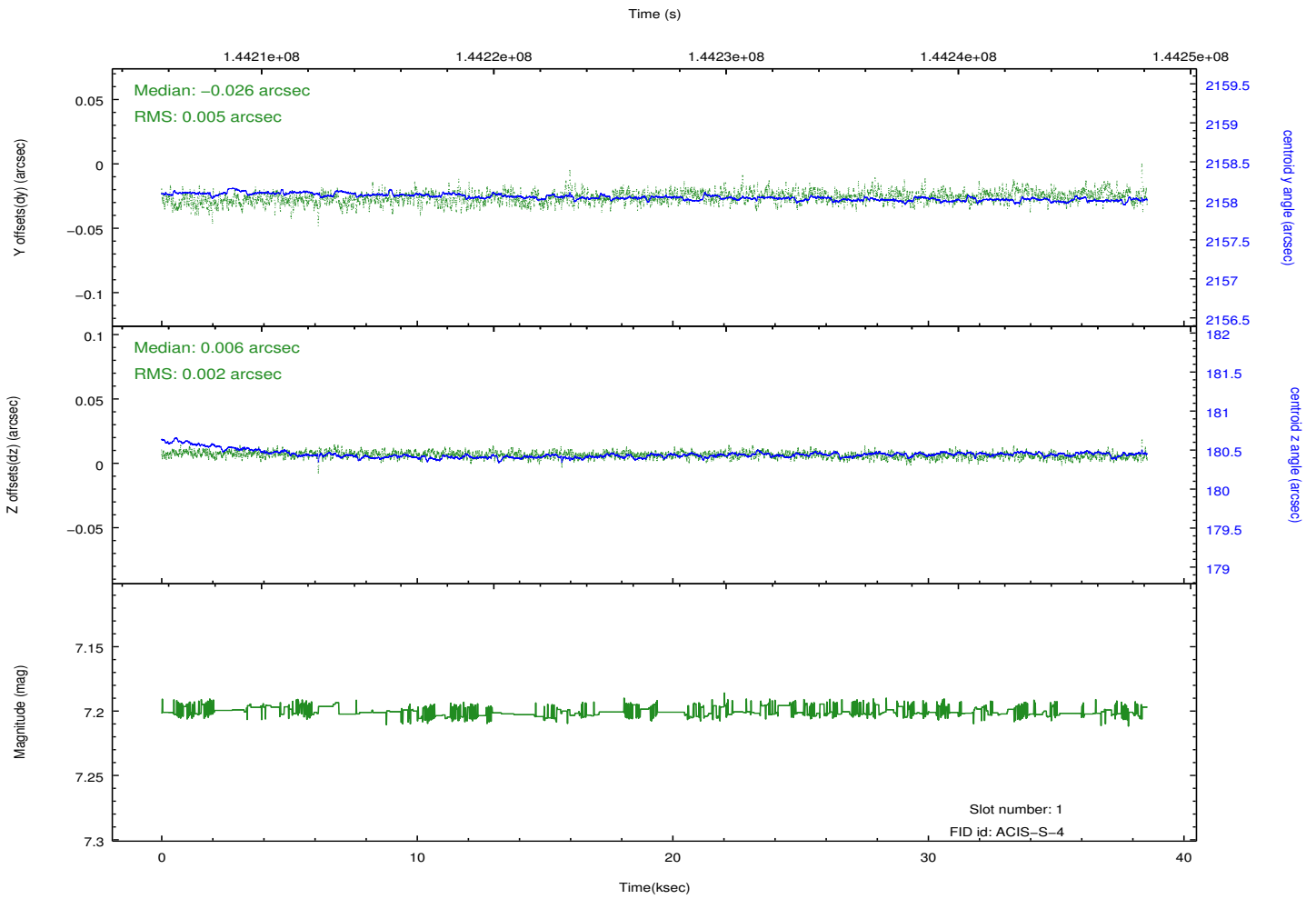
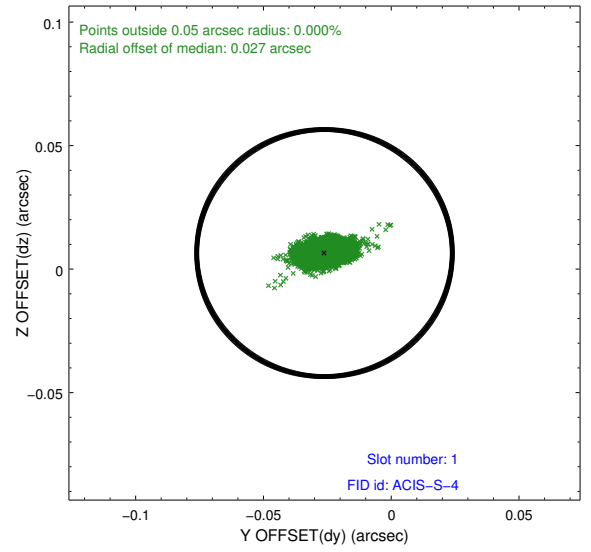
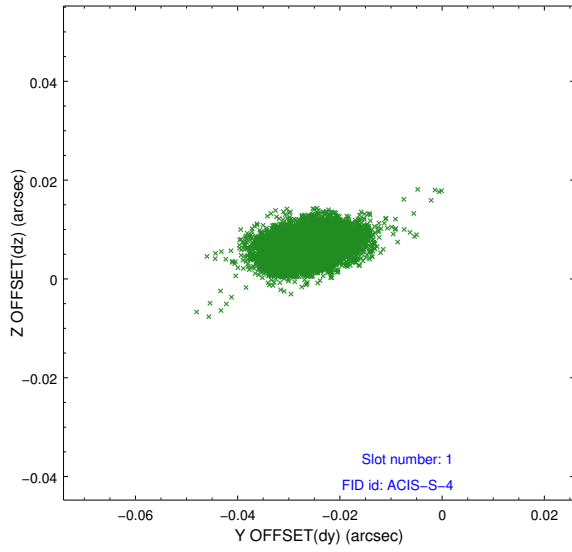


2.5 FID Slots

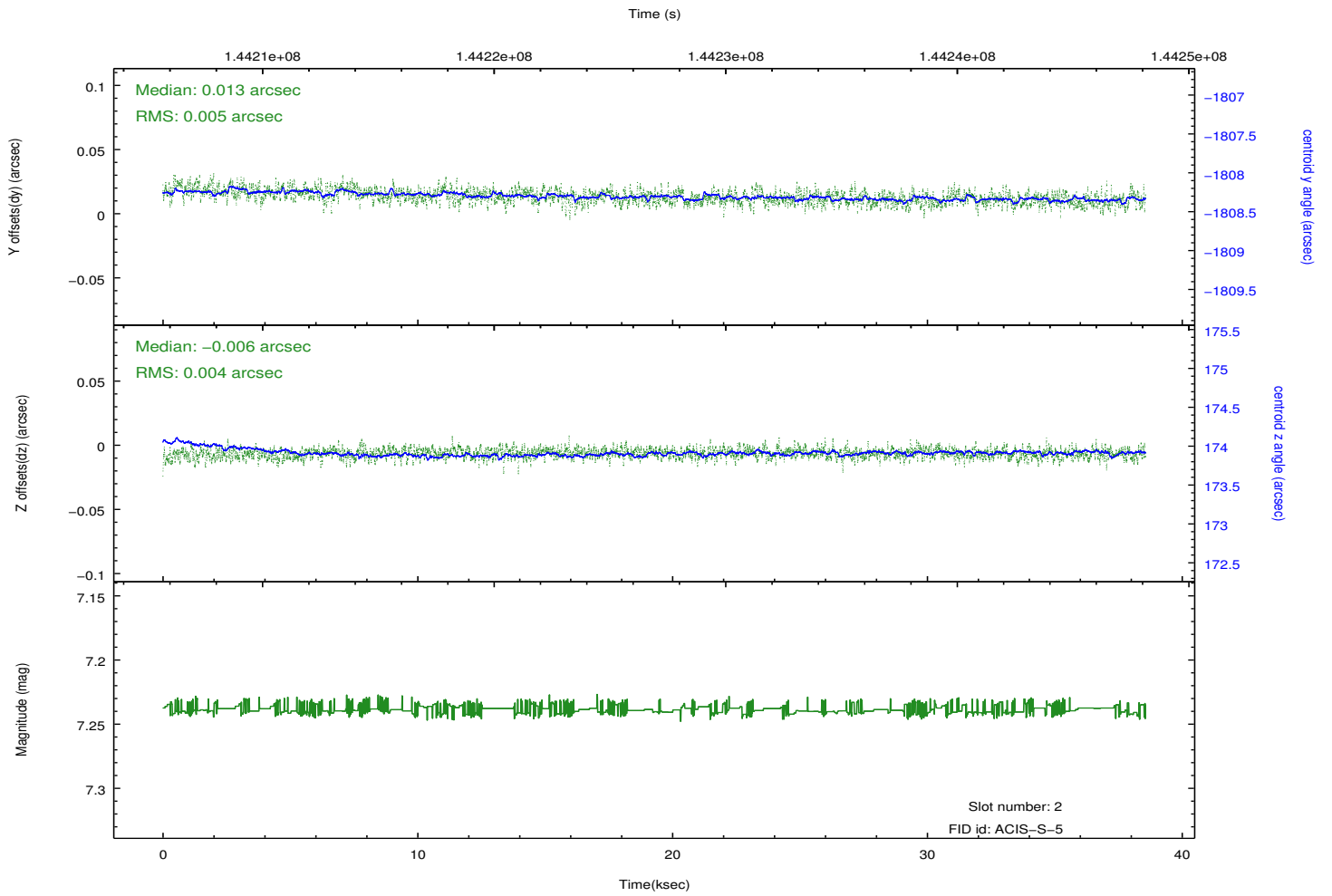
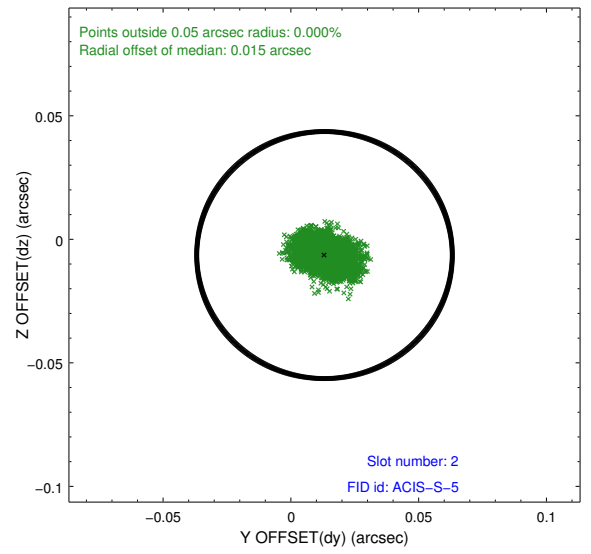
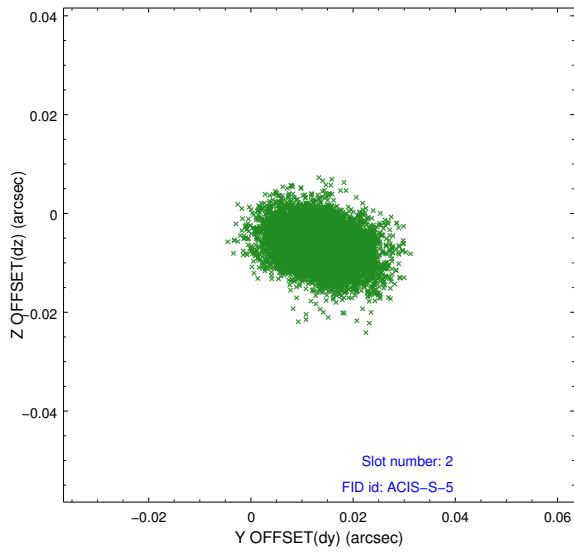
2.5.1 Slot 0



2.5.2 Slot 1



2.5.3 Slot 2



A Summary

A.1 Status

V&V Scientist	Beth Sundheim
V&V Date (YYYY-MM-DD)	2012.10.22
V&V Edition	1
V&V Disposition and Status	OK
V&V Charge Time	38.102

A.2 Comments