

V&V Reference Report

L2 ASCDS Version : 8.4.5

Observation 2980 - L2 Version 3
Chandra X-Ray Center

L2 Processing Date : Sep 27 2012

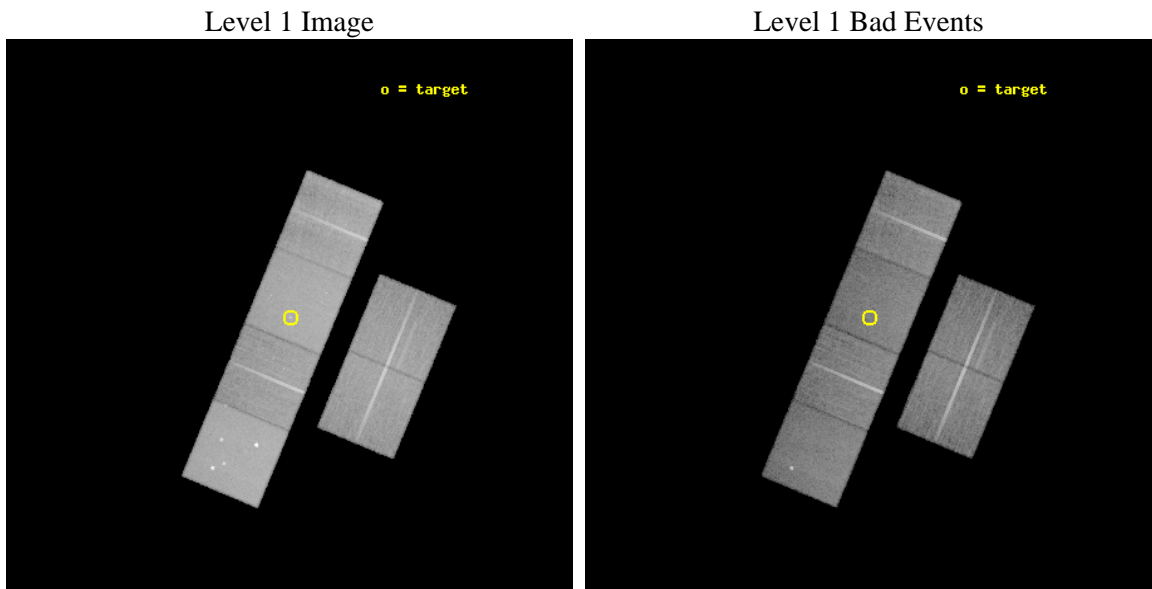
Contents

1	Front	2
2	OBI	3
2.1	OBI	3
2.1.1	Images	3
2.1.2	Bias	3
2.1.3	Parameters	4
2.1.4	Events	4
2.2	Compared Parameters	5
2.3	Aspect	6
2.4	Star Slots	9
2.4.1	Slot 3	9
2.4.2	Slot 4	10
2.4.3	Slot 5	11
2.4.4	Slot 6	12
2.4.5	Slot 7	13
2.5	FID Slots	14
2.5.1	Slot 0	14
2.5.2	Slot 1	15
2.5.3	Slot 2	16
A	Summary	17
A.1	Status	17
A.2	Comments	17

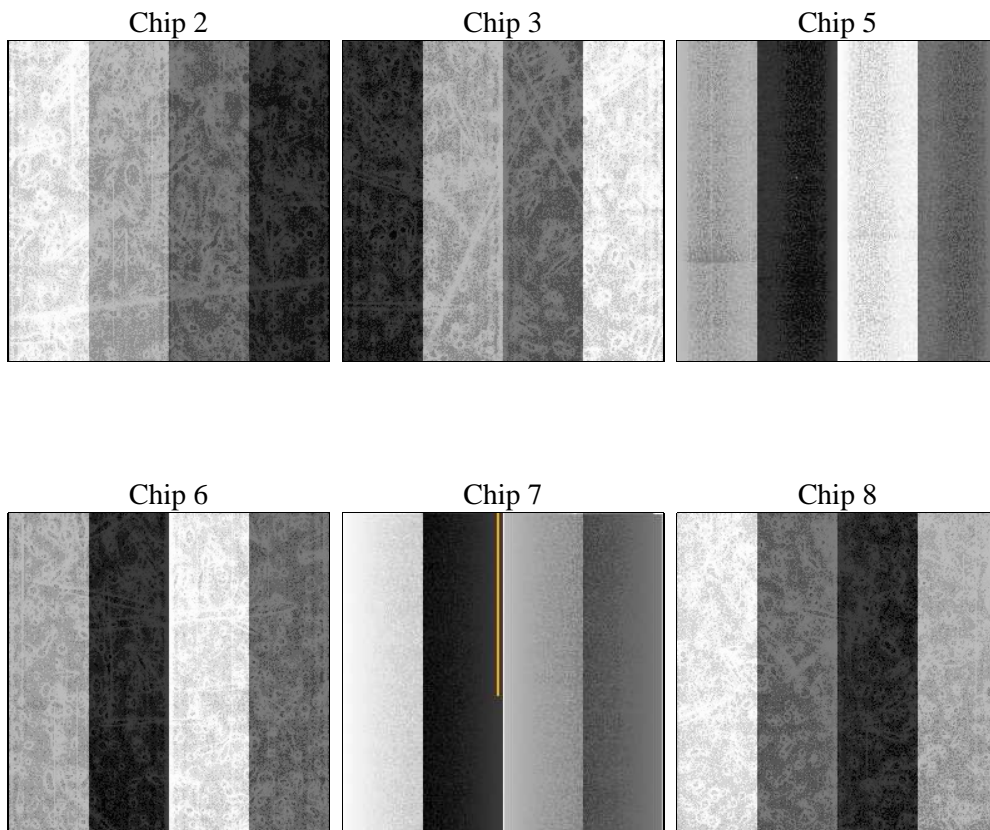
2 OBI

2.1 OBI

2.1.1 Images



2.1.2 Bias



2.1.3 Parameters

obi_num	0	Obi number	sched_exp_time	28839.013000	[s] Scheduled observation exposure time
ascdsver	8.4.5	Processing system revision	ontime	28953.60002695	Sum of GTIs [s]
caldbver	4.5.1.1	 	ontime2	28943.877146214	Sum of GTIs [s]
date	2012-09-27T02:43:56	Date and time of file creation	ontime3	28953.60002695	Sum of GTIs [s]
revision	3	Processing version of data	ontime5	28953.60002695	Sum of GTIs [s]
			ontime6	28953.60002695	Sum of GTIs [s]
			ontime7	28953.60002695	Sum of GTIs [s]
			ontime8	28953.60002695	Sum of GTIs [s]
			l1events	1443911	Number of level 1 events

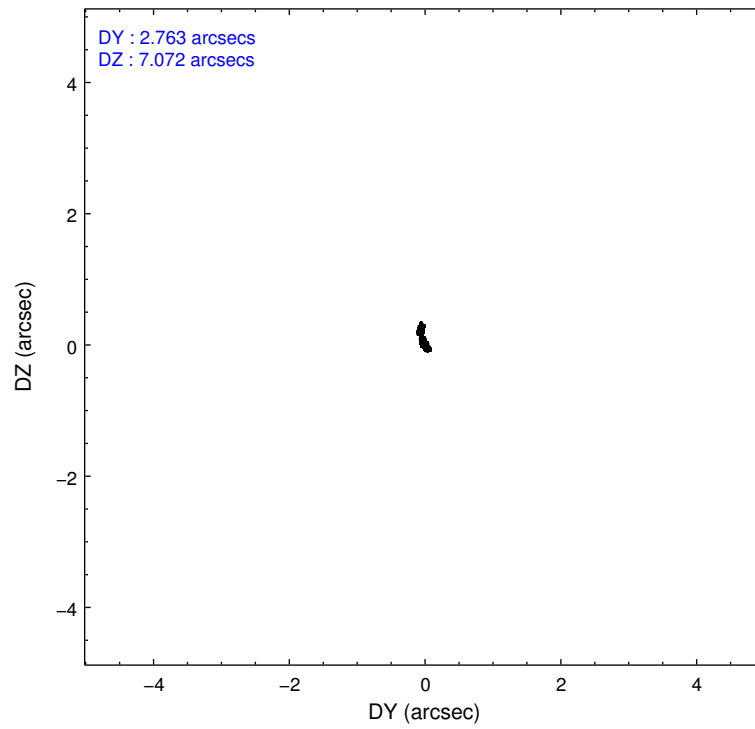
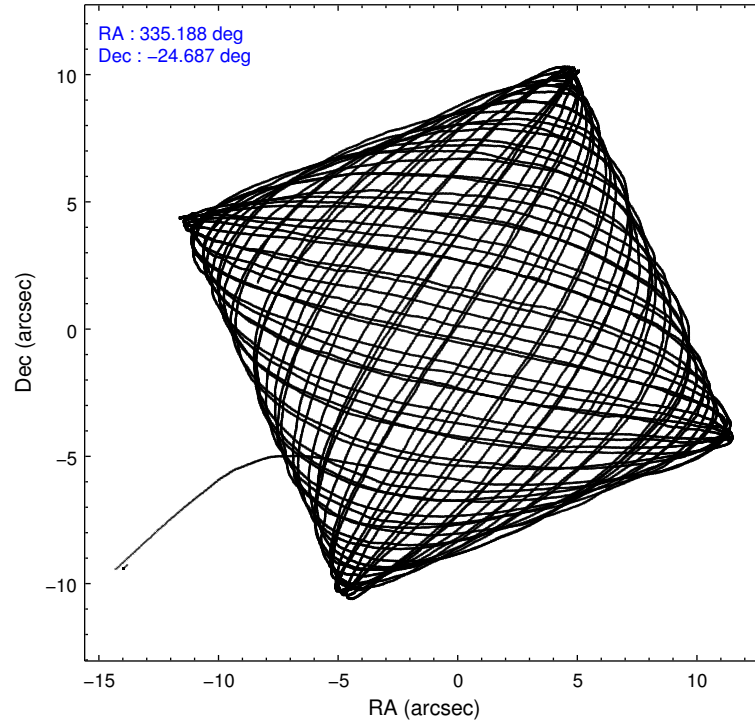
2.1.4 Events

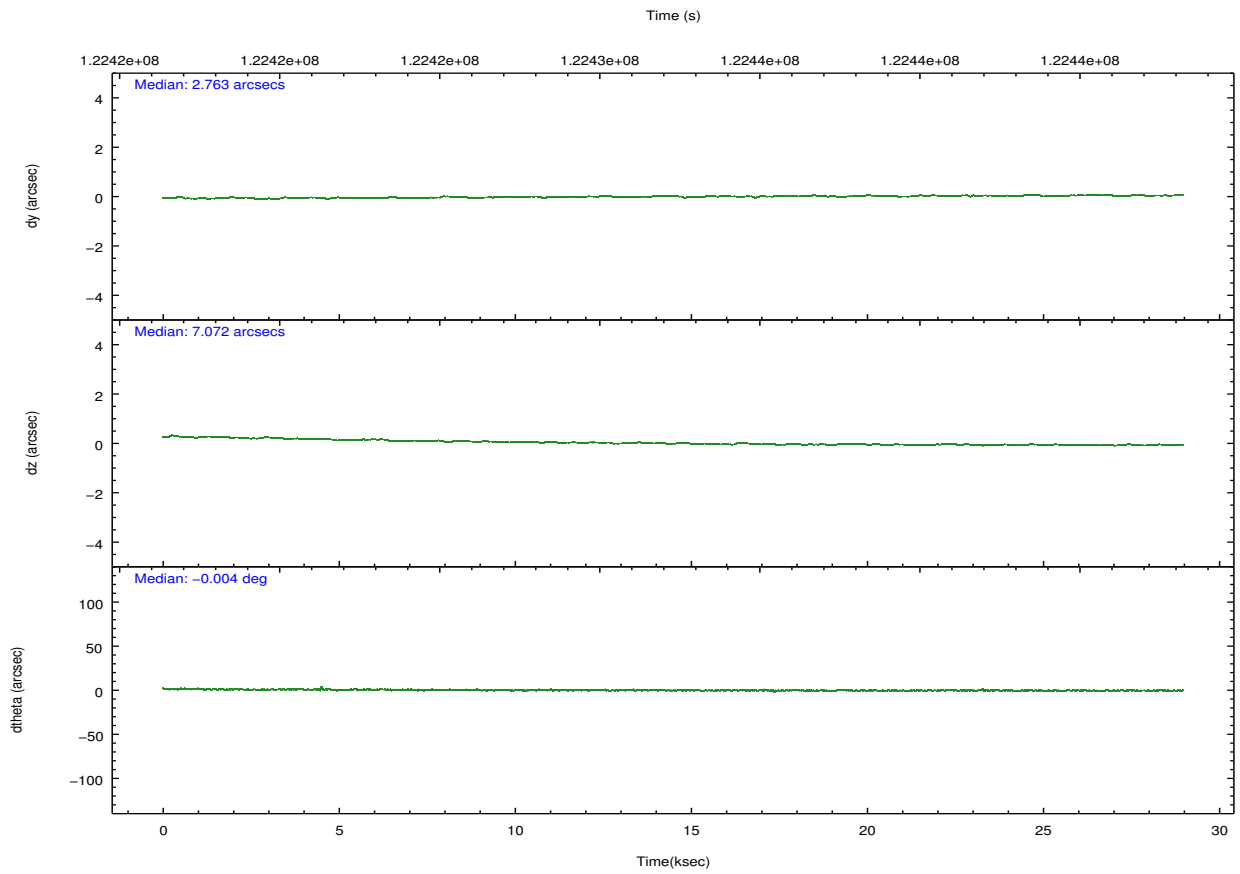
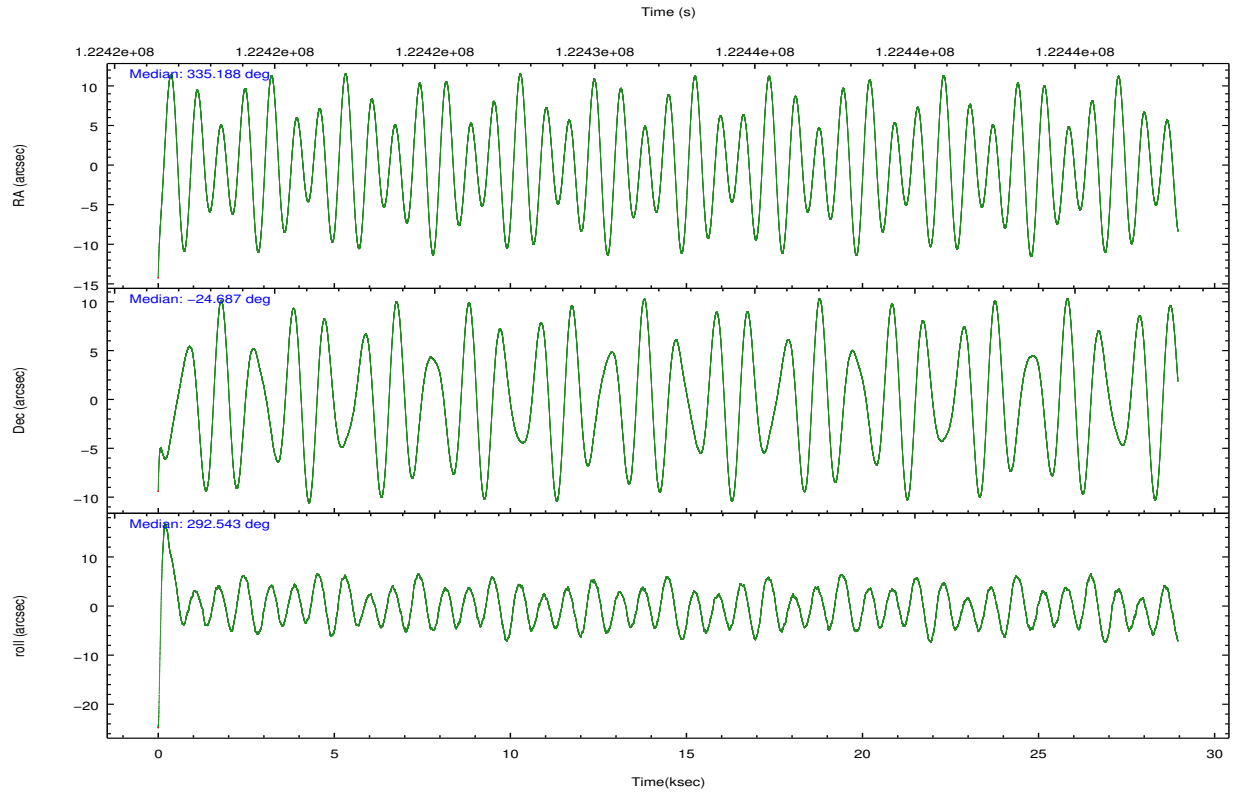
	ccd 2	ccd 3	ccd 5	ccd 6	ccd 7	ccd 8		ccd 2	ccd 3	ccd 5	ccd 6	ccd 7	ccd 8
level 1 events	207828	192171	312588	203915	279246	248163	grade 0 events	10319	9915	23982	10418	13426	16876
rejected events	184757	169977	160056	179995	154635	196794		4%	5%	7%	5%	4%	6%
rejected %	88%	88%	51%	88%	55%	79%	grade 1 events	103	97	366	89	251	150
								0%	0%	0%	0%	0%	0%
							grade 2 events	5129	4556	43645	4957	25016	11029
								2%	2%	13%	2%	8%	4%
							grade 3 events	2134	2049	7868	2327	11407	5792
								1%	1%	2%	1%	4%	2%
							grade 4 events	2161	2164	6473	2254	11192	5449
								1%	1%	2%	1%	4%	2%
							grade 5 events	7128	7948	22826	8552	24521	10648
								3%	4%	7%	4%	8%	4%
							grade 6 events	4062	4173	74844	4733	66854	13526
								1%	2%	23%	2%	23%	5%
							grade 7 events	176792	161269	132584	170585	126579	184693
								85%	83%	42%	83%	45%	74%

2.2 Compared Parameters

Parameter	Planned	Actual	Parameter	Planned	Actual
Instrument	ACIS	ACIS	Obspar format version number	7	7
Detector	ACIS-235678	ACIS-235678	Obspar file type	PREDICTED	ACTUAL
Grating	NONE	NONE	Obspar update status	NONE	UPDATED
Data mode	FAINT	FAINT	Number of optional ACIS chips dropped	0	0
Observation mode	POINTING	POINTING	On-chip summing requested	N	N
[deg] Pointing RA	335.164617	335.1886427833407	Subarray requested	NONE	NONE
[deg] Pointing Dec	-24.671002	-24.68733001715052	Alternating exposures requested	N	N
[deg] Pointing Roll	292.374194	292.5408381209265	[s] Primary exposure time	0.000000	3.2
[mm] SIM focus pos	-0.684267	-0.6828225247311905			
[mm] SIM defocus	0	0.001444936568705701			
[mm] SIM translation stage pos	-190.132523	-190.1425803651734			
[mm] SIM translation stage offset	0	0.01005778216563158			
[s] Observation start time (MET)	122417927.184000	122416433.42161			
Observation start date	2001-11-17T20:57:43	2001-11-17T20:33:53			
[s] Observation end time (MET)	122446766.184000	122447080.41033			
Observation end date	2001-11-18T04:58:22	2001-11-18T05:04:40			
Read mode	TIMED	TIMED			

2.3 Aspect



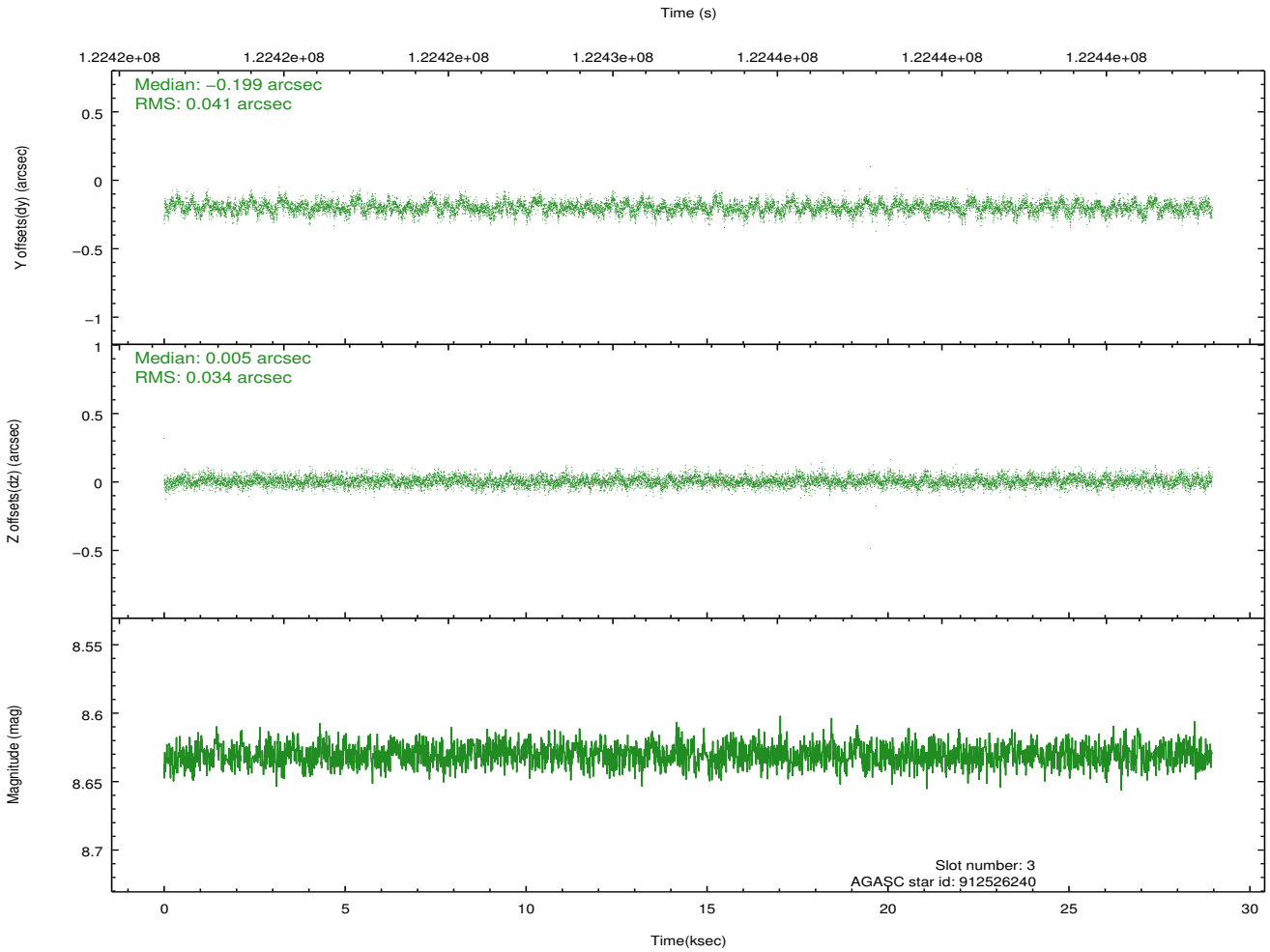
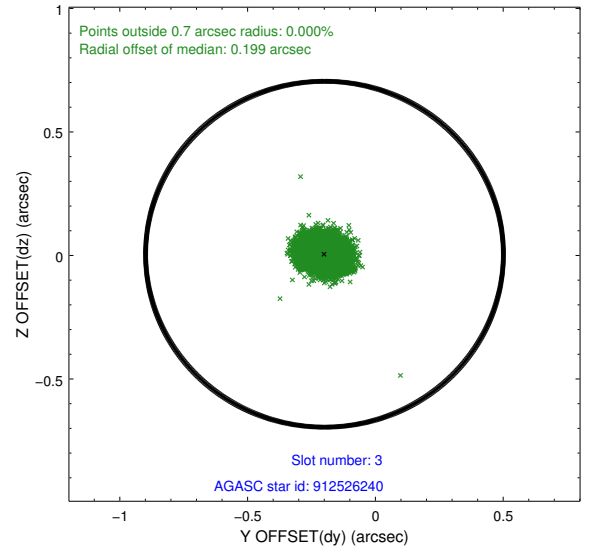
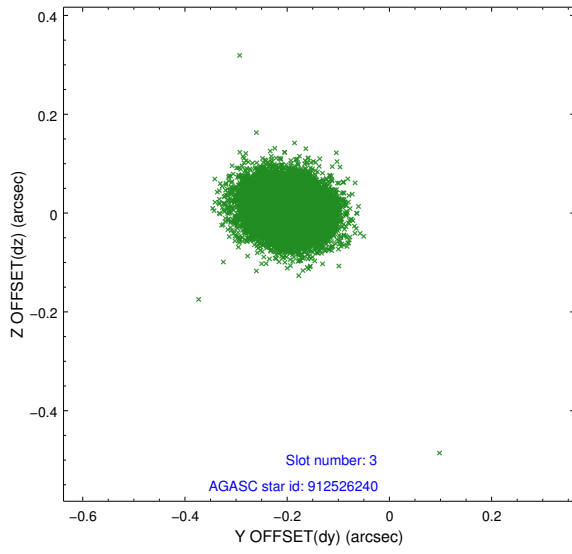


Slot Statistics

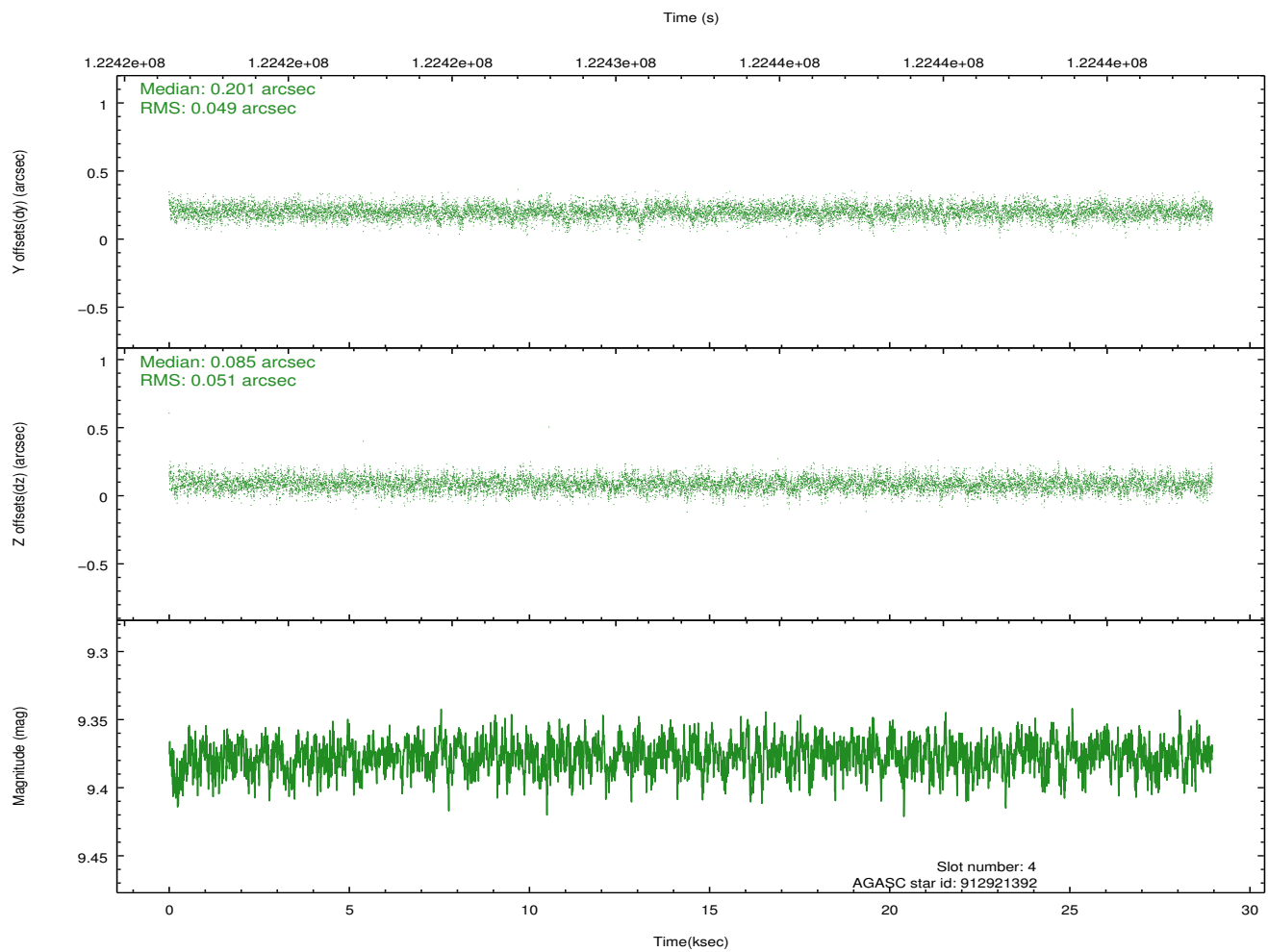
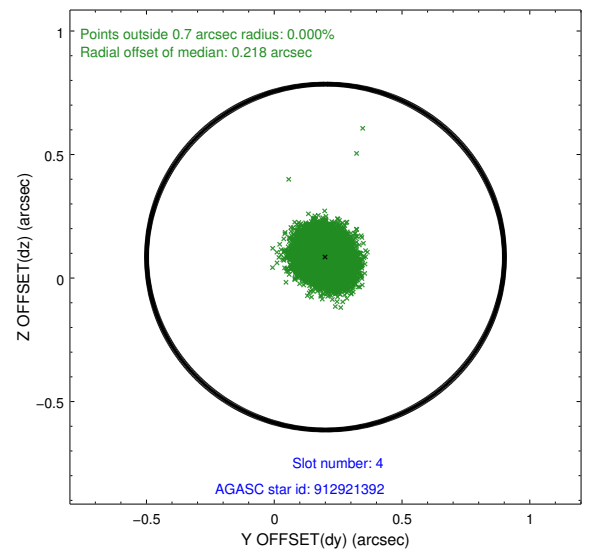
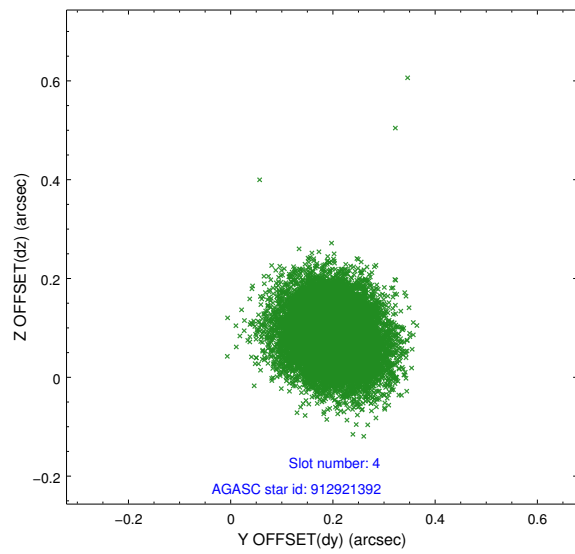
slot	status	id	mag	n_pts	med_dy	med_dz	dr1	dr2	ra	dec	mean_y	mean_z
0	FID	ACIS-S-2	7.11	7064	-0.015	0.012	0.007	0.012	0.000000	0.000000	-755.41	-1728.21
1	FID	ACIS-S-4	7.20	7063	-0.045	0.004	0.006	0.011	0.000000	0.000000	2157.80	180.18
2	FID	ACIS-S-5	7.24	7063	0.028	-0.007	0.007	0.012	0.000000	0.000000	-1808.10	173.93
3	GUIDE	912526240	8.63	14124	-0.199	0.005	0.056	0.092	334.964924	-24.088861	-2186.01	191.49
4	GUIDE	912921392	9.38	14117	0.201	0.085	0.075	0.122	335.310837	-25.130419	1712.57	-188.17
5	GUIDE	912532896	9.18	14115	-0.037	-0.036	0.070	0.114	334.919423	-24.639725	-407.34	-698.67
6	GUIDE	912921120	9.05	14125	0.171	-0.072	0.071	0.113	335.195251	-25.115319	1518.75	-516.04
7	GUIDE	911614424	8.88	14122	-0.132	0.019	0.064	0.103	334.652919	-24.343031	-1726.41	-1103.01

2.4 Star Slots

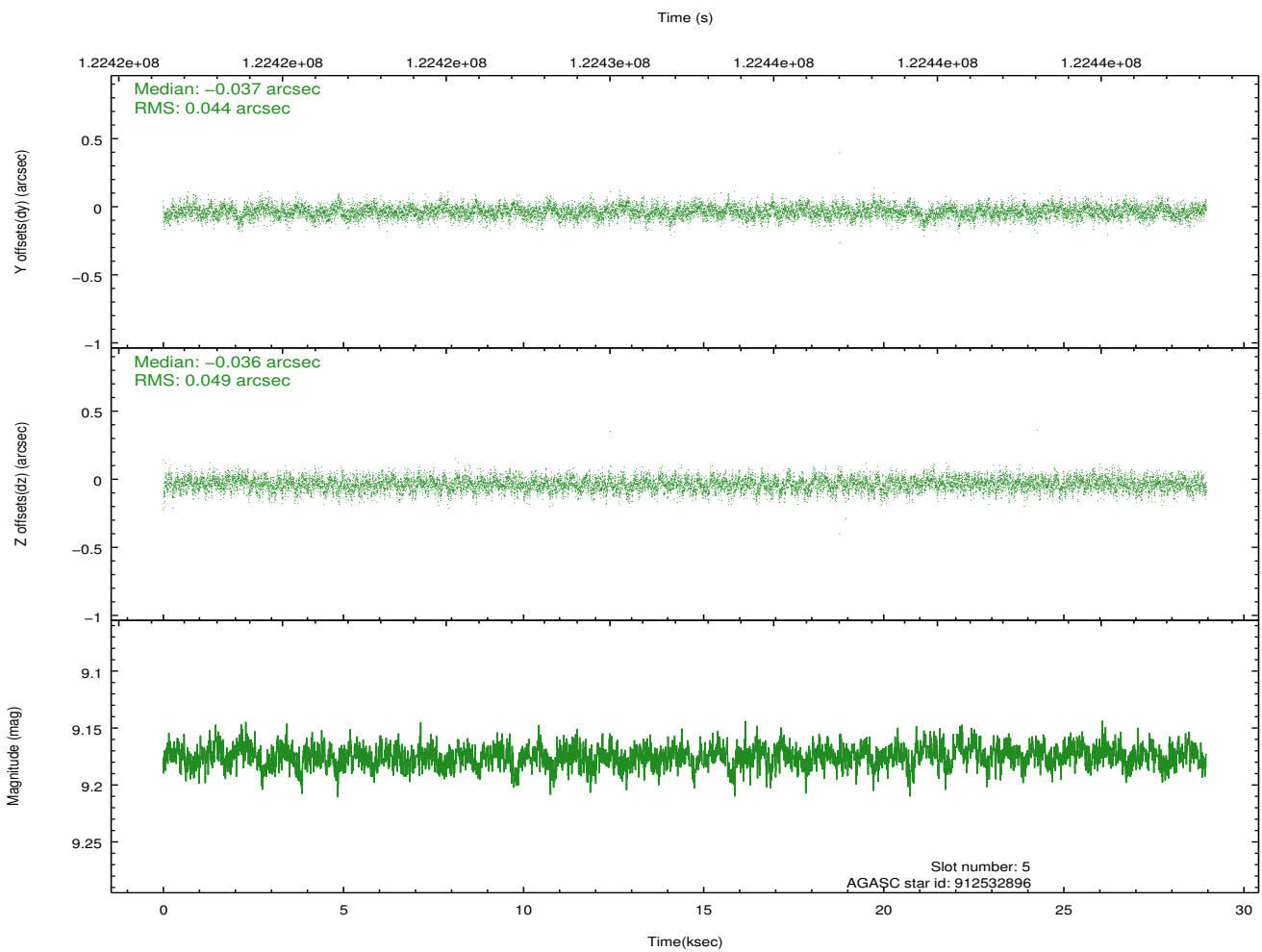
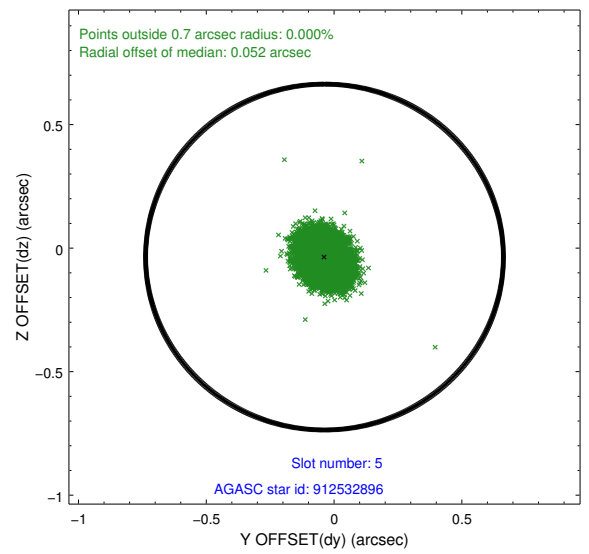
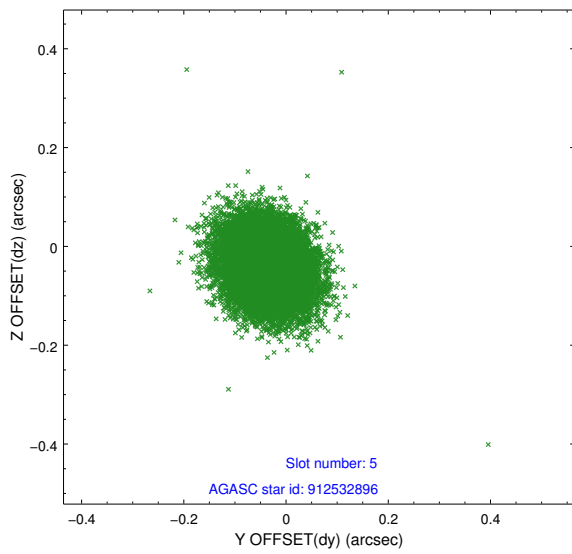
2.4.1 Slot 3



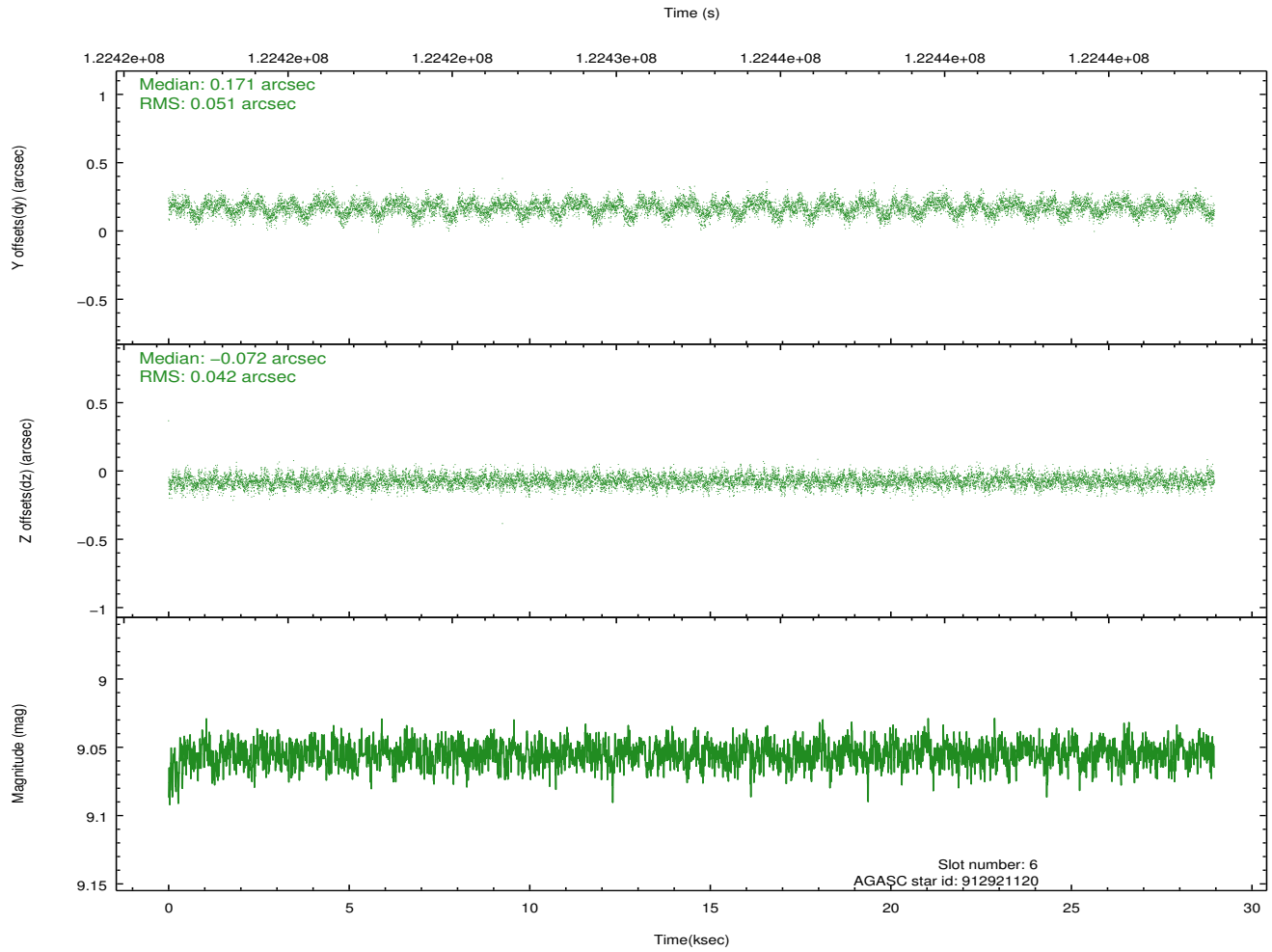
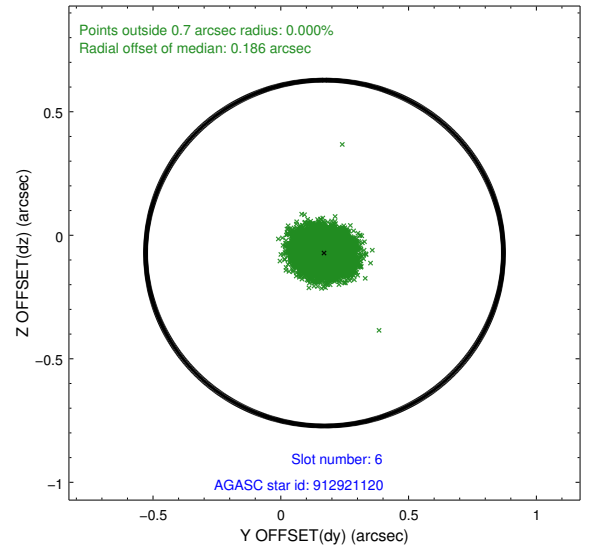
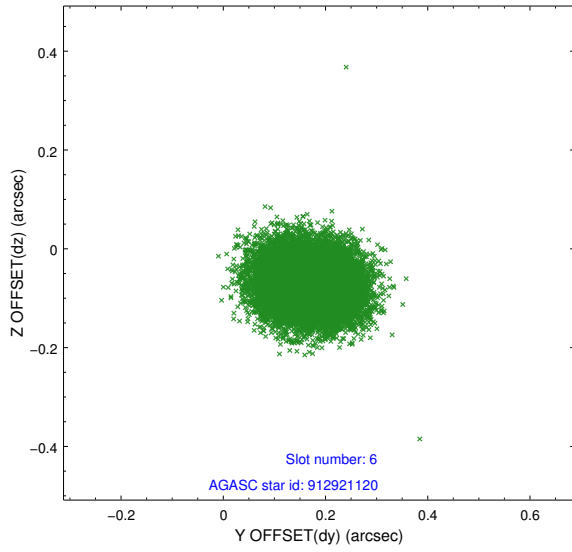
2.4.2 Slot 4



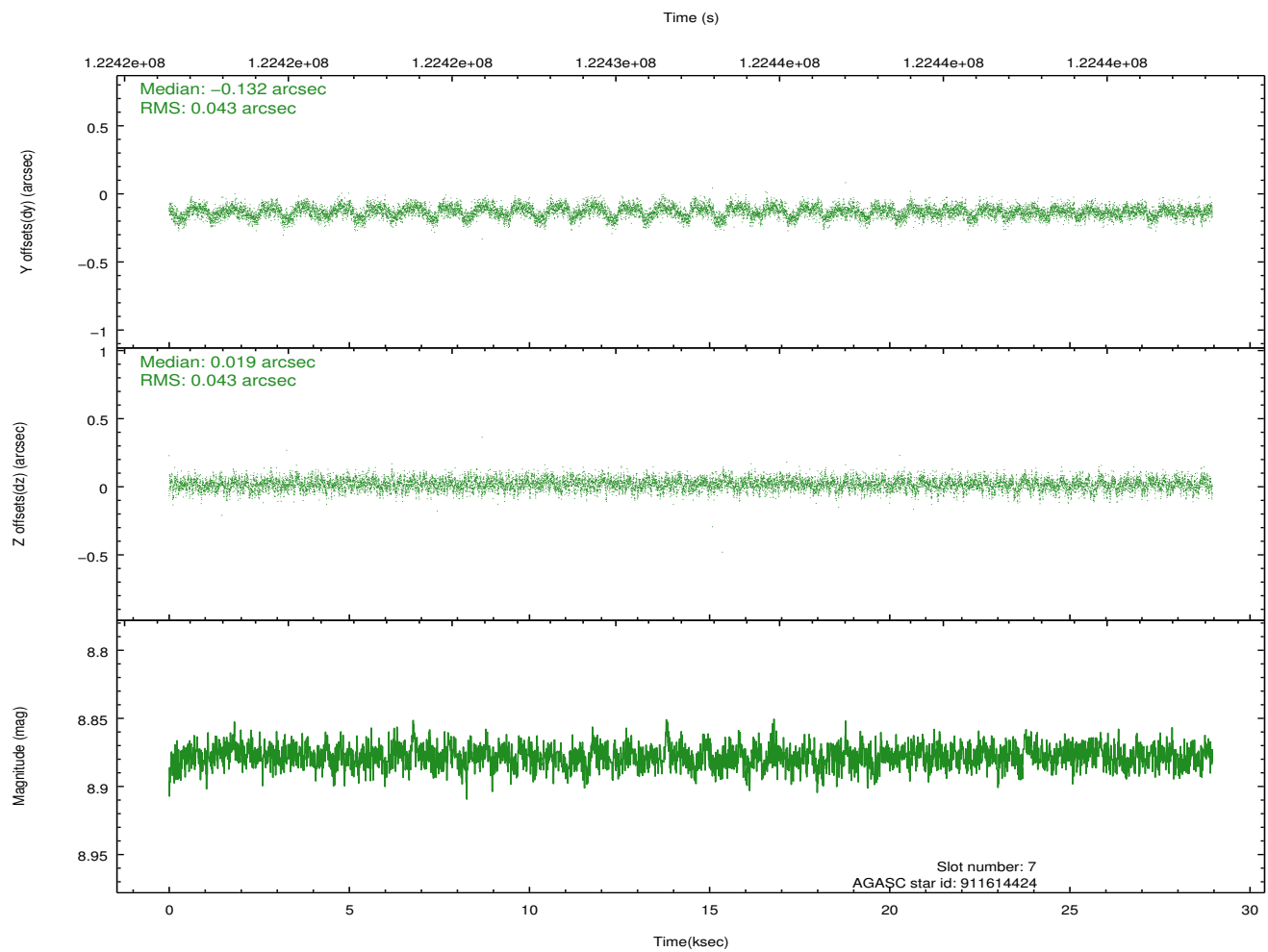
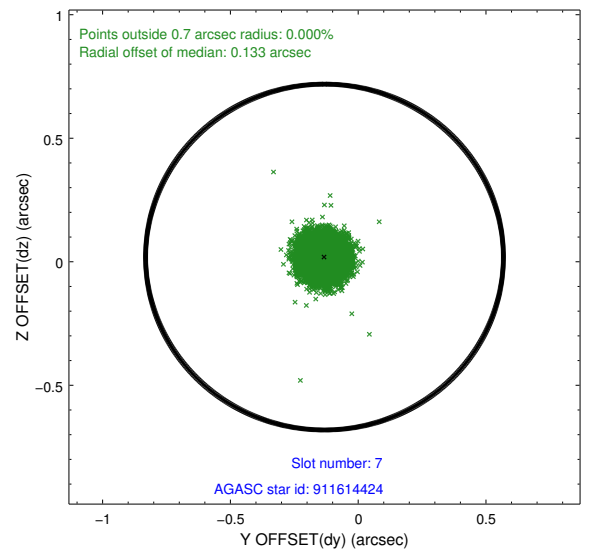
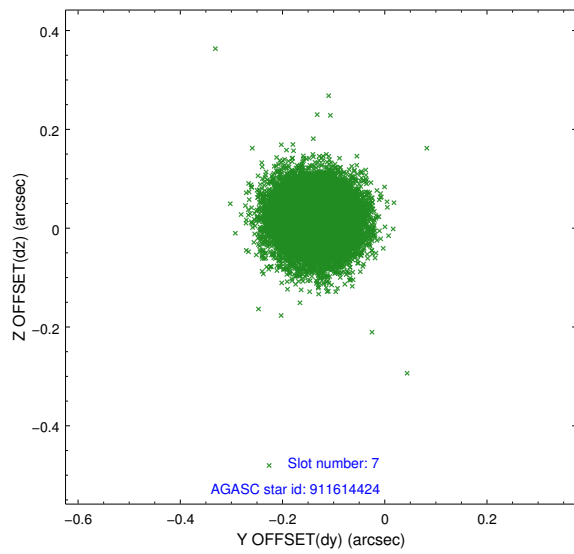
2.4.3 Slot 5



2.4.4 Slot 6

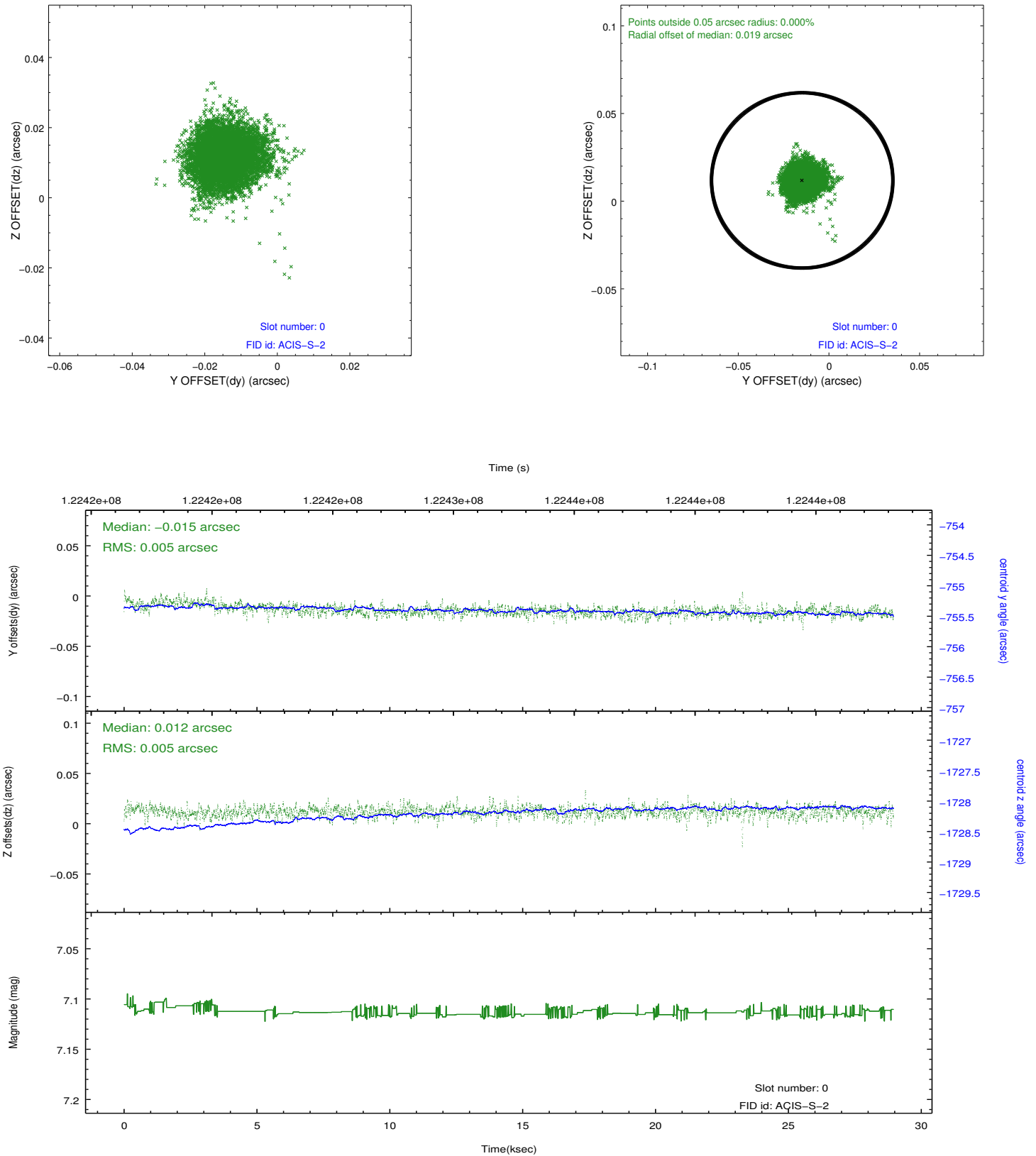


2.4.5 Slot 7

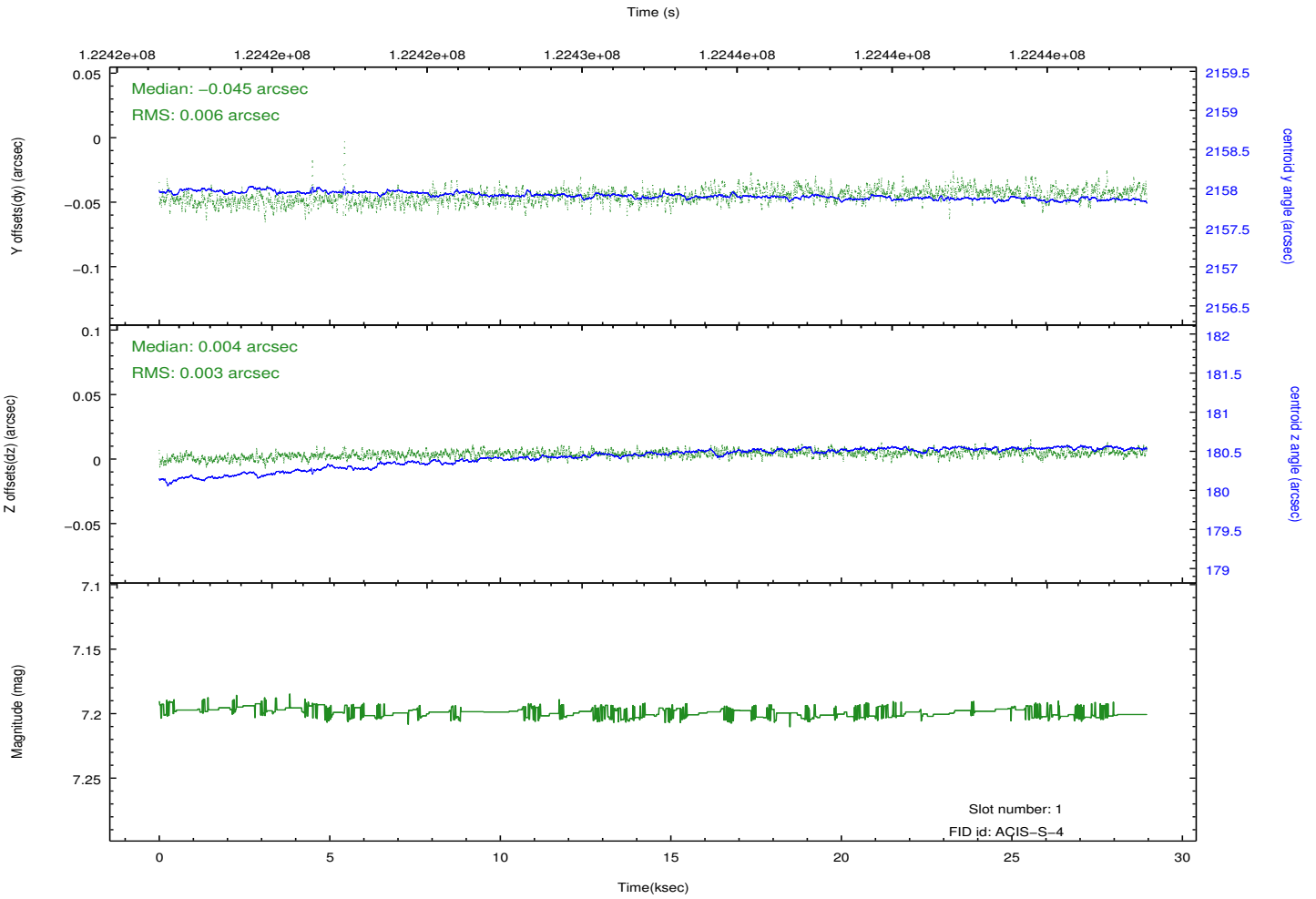
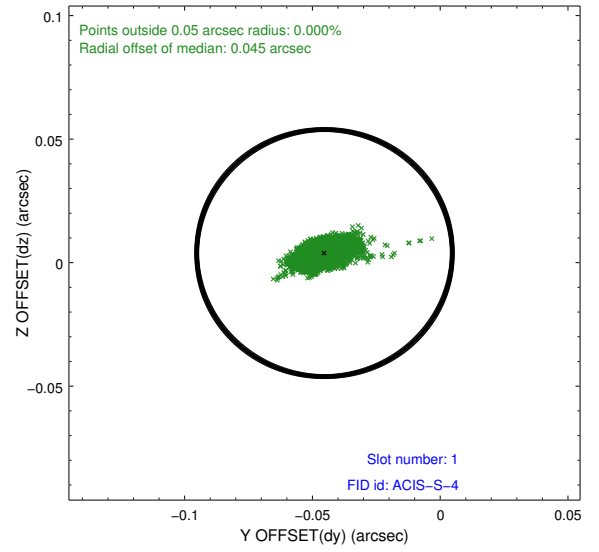
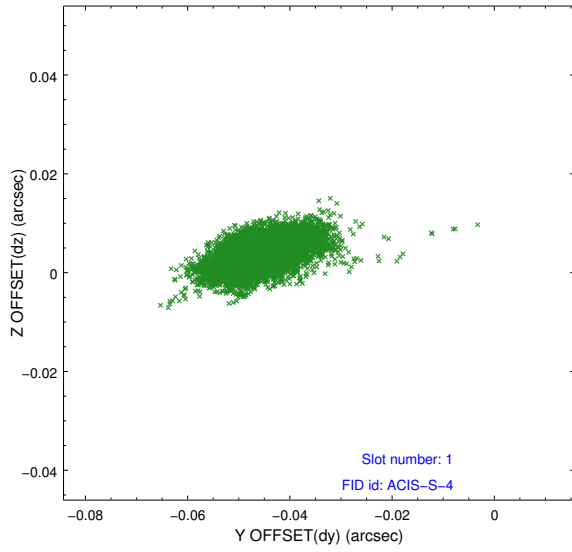


2.5 FID Slots

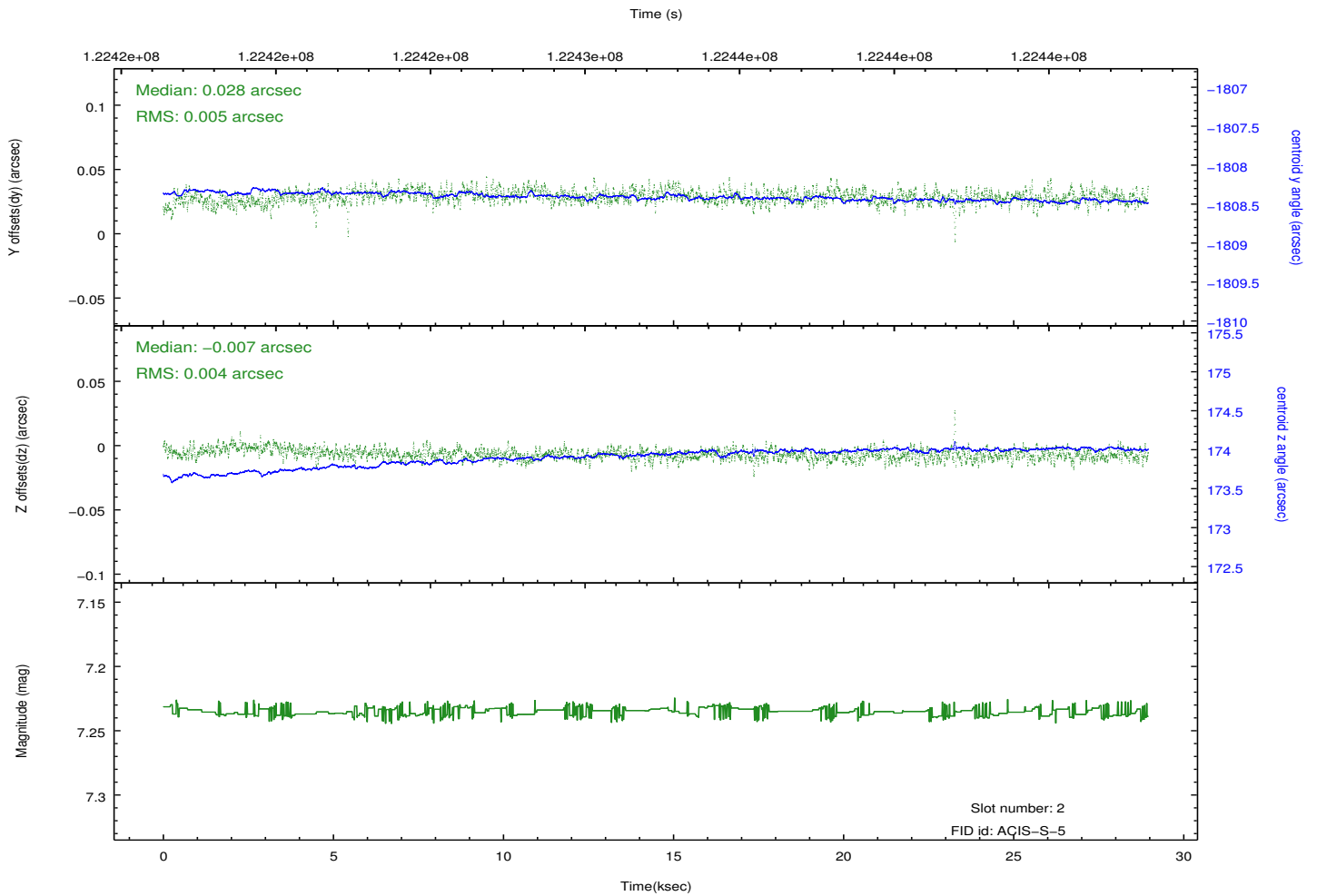
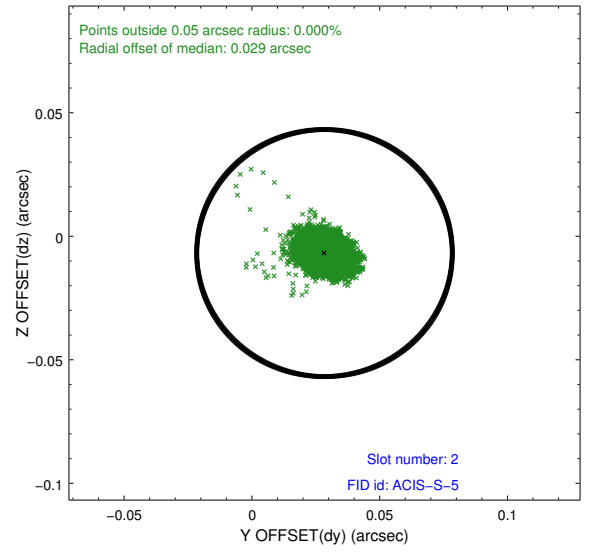
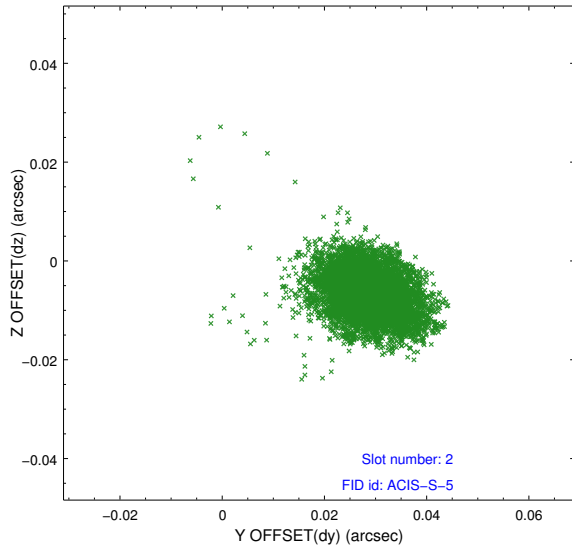
2.5.1 Slot 0



2.5.2 Slot 1



2.5.3 Slot 2



A Summary

A.1 Status

V&V Scientist	Jen Lauer
V&V Date (YYYY-MM-DD)	2012.09.28
V&V Edition	1
V&V Disposition and Status	OK
V&V Charge Time	28.953

A.2 Comments