

V&V Reference Report

L2 ASCDS Version : 8.4.5

Observation 30 - L2 Version 5
Chandra X-Ray Center

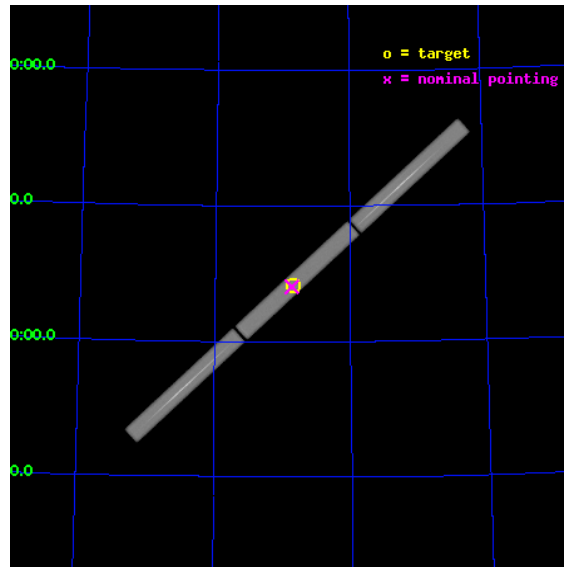
L2 Processing Date : Sep 5 2012

Contents

1	Front	2
2	OBI	3
2.1	OBI	3
2.1.1	Images	3
2.1.2	Parameters	4
2.1.3	Events	4
2.2	Compared Parameters	5
2.3	Aspect	6
2.4	Star Slots	9
2.4.1	Slot 3	9
2.4.2	Slot 4	10
2.4.3	Slot 5	11
2.4.4	Slot 6	12
2.4.5	Slot 7	13
2.5	FID Slots	14
2.5.1	Slot 0	14
2.5.2	Slot 1	15
2.5.3	Slot 2	16
3	Gratings	17
3.1	LETG Arm	17
A	Summary	19
A.1	Status	19
A.2	Comments	19

1 Front

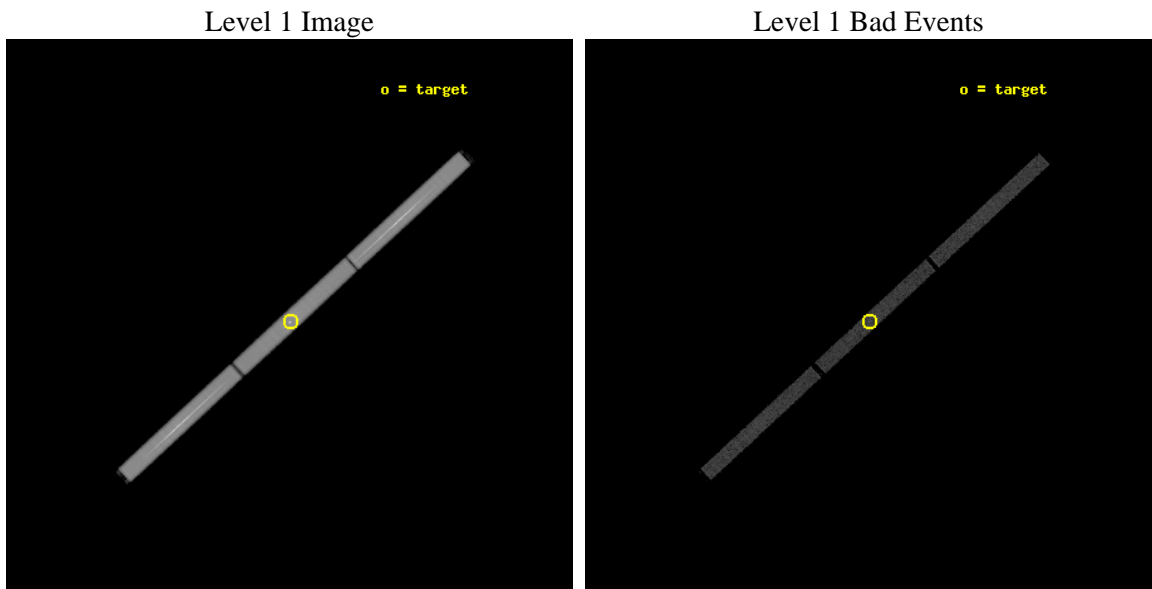
seq_num	200028	Sequence number
obs_id	30	Observation id
title	HIGH RESOLUTION SPECTROSCOPY OF WHITE DWARFS	Proposal title
observer	Dr. Stephen Murray	Principal investigator
object	H1504+65	Source name
ra_targ	225.53375	Observer's specified target RA [deg]
dec_targ	66.206667	Observer's specified target Dec [deg]
ra_nom	225.54231909915	Nominal RA [deg]
dec_nom	66.20322958897	Nominal Dec [deg]
roll_nom	317.25814296955	Nominal Roll [deg]
revision	5	Processing version of data
ontime	25136.332197249	[s]
livedtime	24990.59563548	Ontime multiplied by DTCOR
l2events	1201314	Number of level 2 events



2 OBI

2.1 OBI

2.1.1 Images



2.1.2 Parameters

obi_num	0	Obi number	sched_exp_time	25000.000000	[s] Scheduled observation exposure time
ascdsver	8.4.5	Processing system revision	ontime	25136.332197249	[s]
caldsver	4.5.1.1	 	l1events	1746469	Number of level 1 events
date	2012-09-05T12:43:15	Date and time of file creation			
revision	5	Processing version of data			

2.1.3 Events

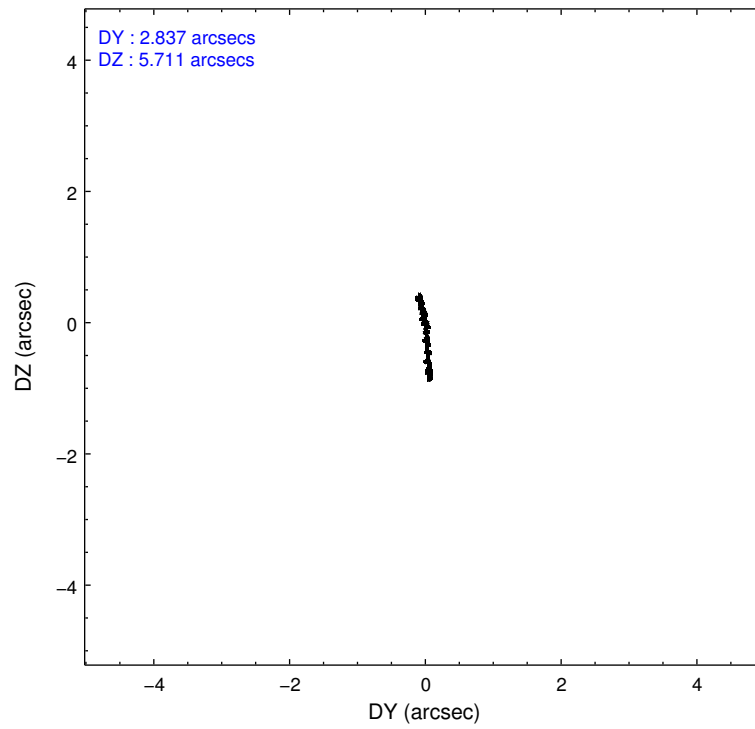
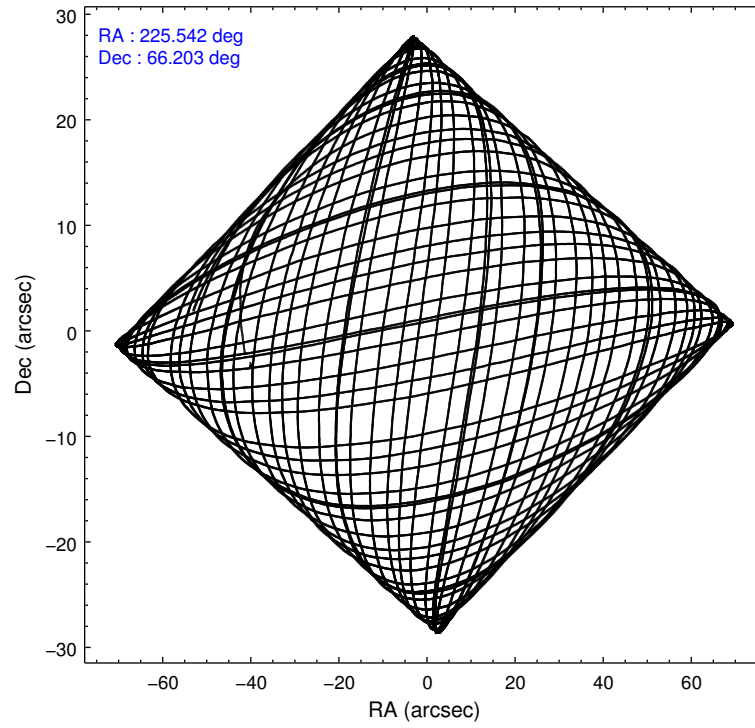
Level 1 Events

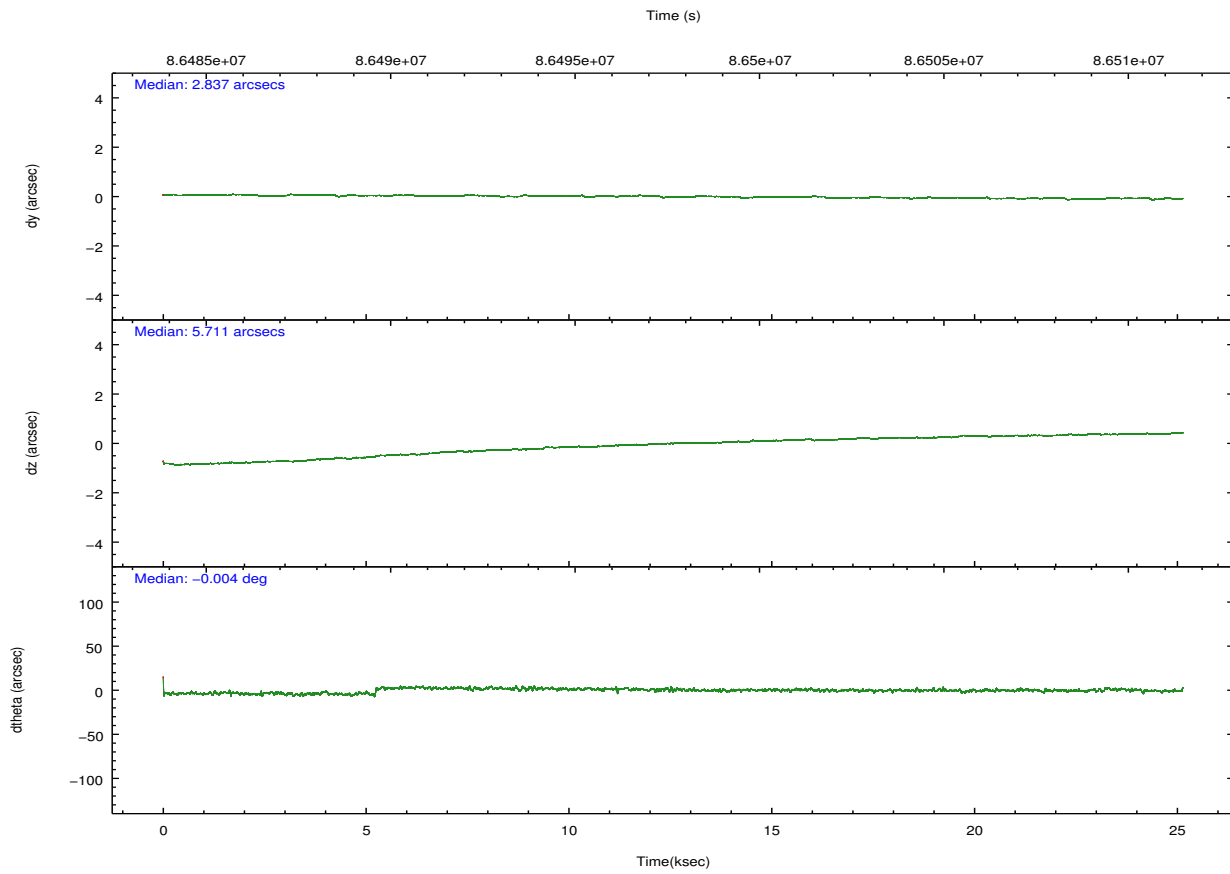
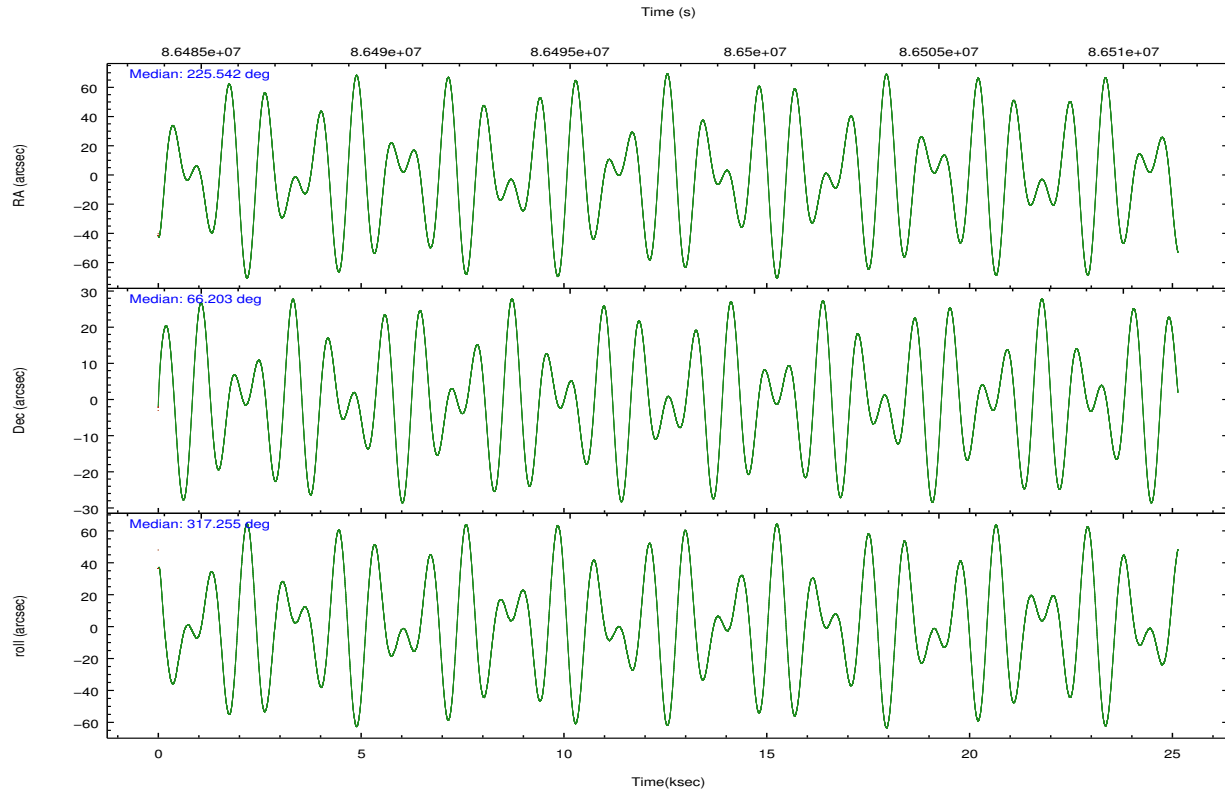
	segment 1	segment 2	segment 3
level 1 events	607862	529074	609533
rejected events	35849	33782	35722
rejected %	5%	6%	5%

2.2 Compared Parameters

Parameter	Planned	Actual	Parameter	Planned	Actual
Instrument	HRC	HRC	Obspar format version number	7	7
Detector	HRC-S	HRC-S	Obspar file type	PREDICTED	ACTUAL
Grating	LETG	LETG	Obspar update status	NONE	UPDATED
Data mode	OBSERVING	OBSERVING			
Observation mode	POINTING	POINTING			
[deg] Pointing RA	225.472203	225.542319099148			
[deg] Pointing Dec	66.208315	66.20322958896978			
[deg] Pointing Roll	317.254966	317.2581429695473			
[mm] SIM focus pos	-1.429586	-1.428180813131781			
[mm] SIM defocus	0.1037507710433287	0.1051558262725154			
[mm] SIM translation stage pos	250.455976	250.466033080201			
[mm] SIM translation stage offset	0	-0.01005468664627074			
[s] Observation start time (MET)	86485225.184000	86484086.35171001			
Observation start date	2000-09-27T23:39:21	2000-09-27T23:21:26			
[s] Observation end time (MET)	86510225.184000	86511073.577727			
Observation end date	2000-09-28T06:36:01	2000-09-28T06:51:13			

2.3 Aspect



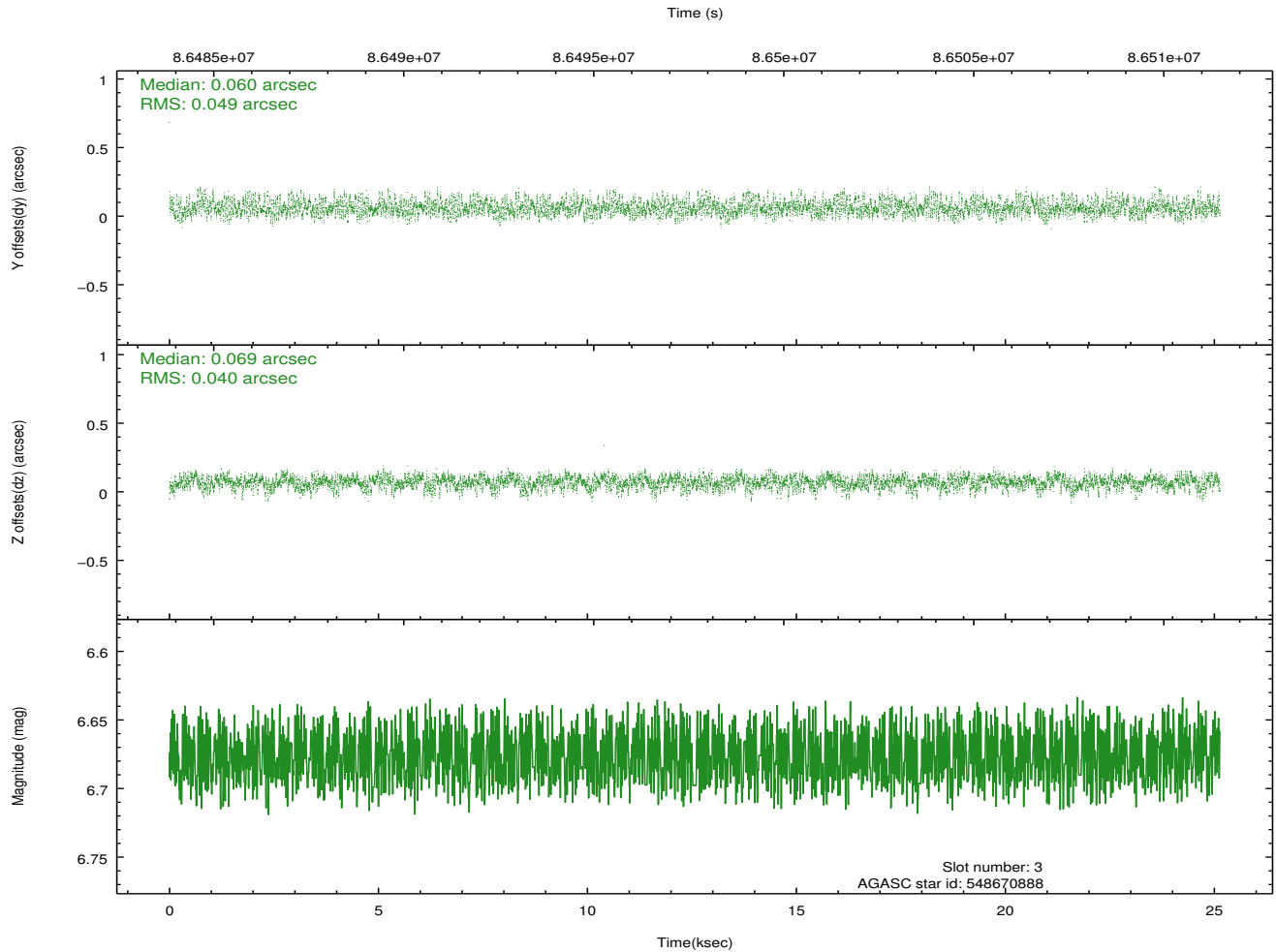
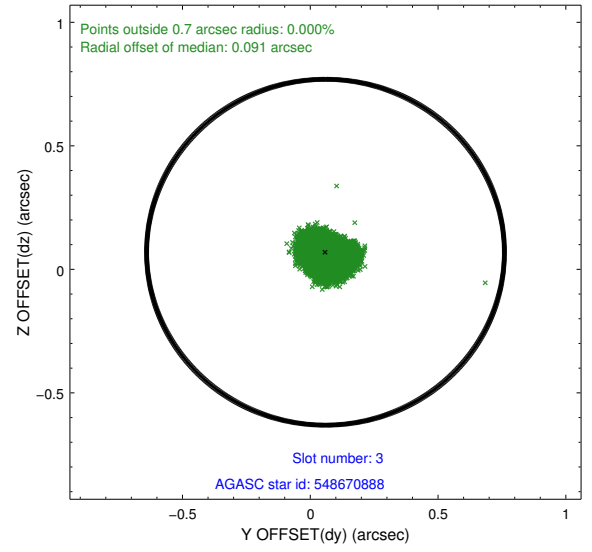
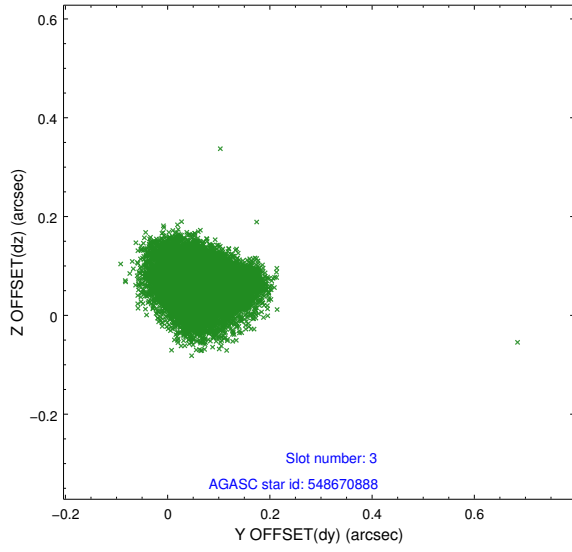


Slot Statistics

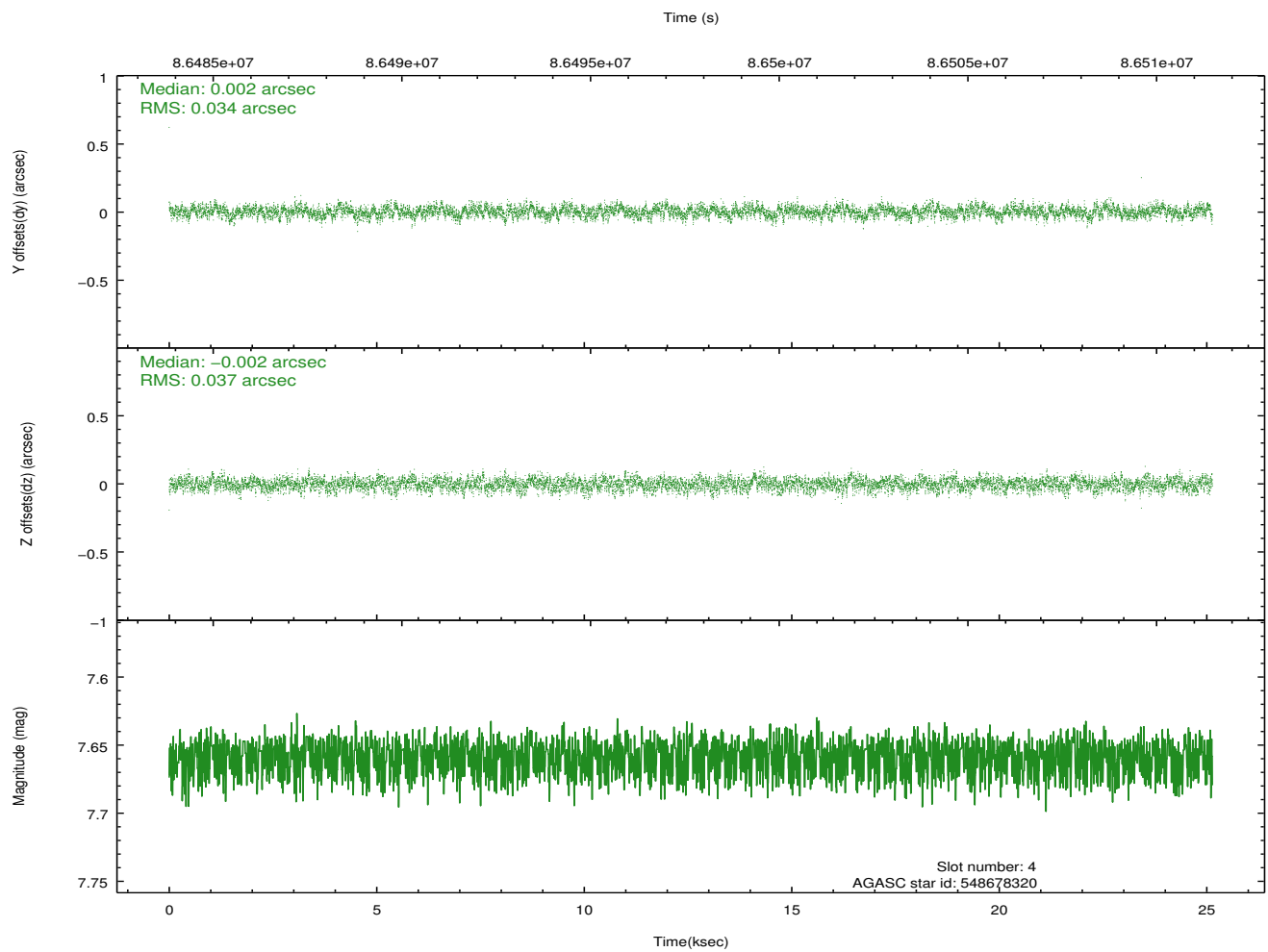
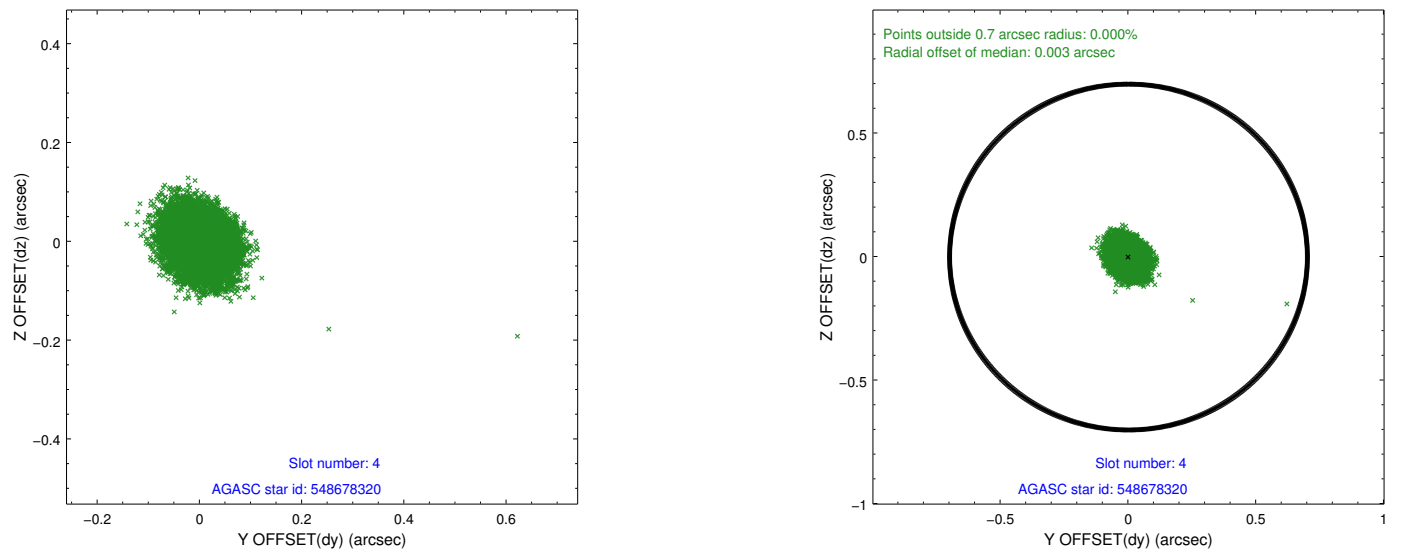
slot	status	id	mag	n_pts	med_dy	med_dz	dr1	dr2	ra	dec	mean_y	mean_z
0	FID	HRC-S-1	7.00	6131	0.113	-0.159	0.014	0.021	0.000000	0.000000	-1156.89	-454.16
1	FID	HRC-S-3	7.02	6131	0.137	-0.044	0.015	0.023	0.000000	0.000000	-1159.78	575.41
2	FID	HRC-S-4	6.97	6131	0.137	-0.093	0.005	0.010	0.000000	0.000000	1241.20	578.11
3	GUIDE	548670888	6.68	12262	0.060	0.069	0.069	0.106	225.990697	65.919714	1262.95	-243.24
4	GUIDE	548678320	7.66	12260	0.002	-0.002	0.054	0.085	225.586135	65.965043	717.65	-529.26
5	GUIDE	548677368	8.39	12257	-0.033	-0.014	0.064	0.101	224.533121	66.208021	-1007.16	-918.67
6	GUIDE	548676120	9.34	12257	-0.016	-0.028	0.082	0.136	225.444313	65.678230	1265.36	-1429.16
7	GUIDE	548669832	9.75	12255	-0.016	-0.023	0.116	0.187	227.231108	65.999487	2377.44	1222.78

2.4 Star Slots

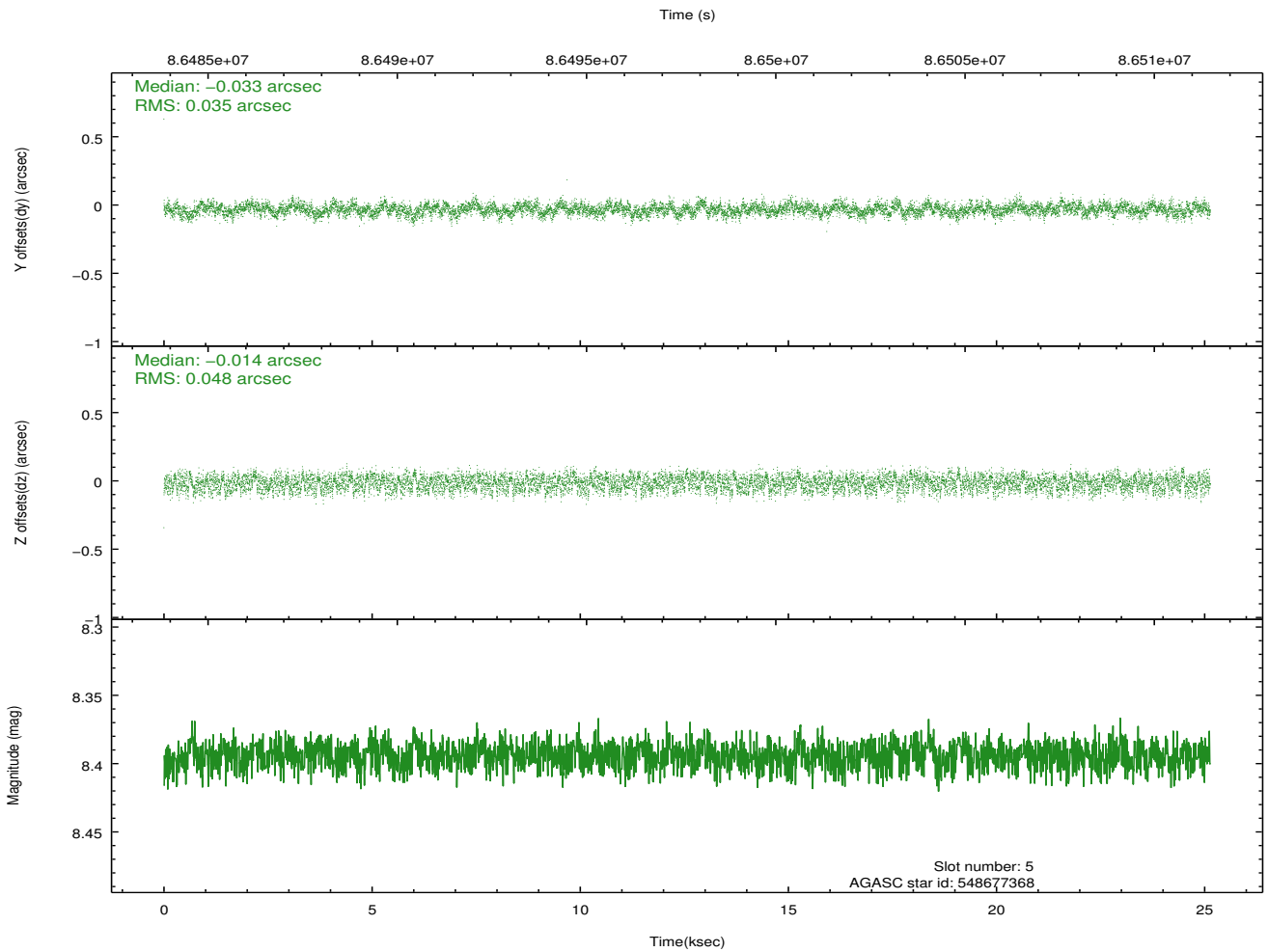
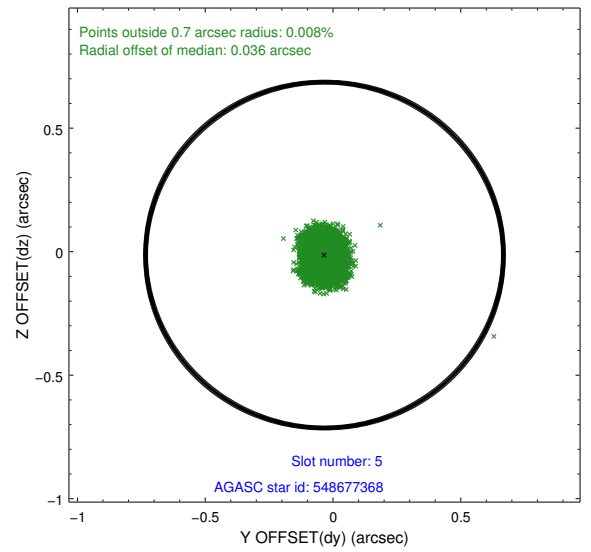
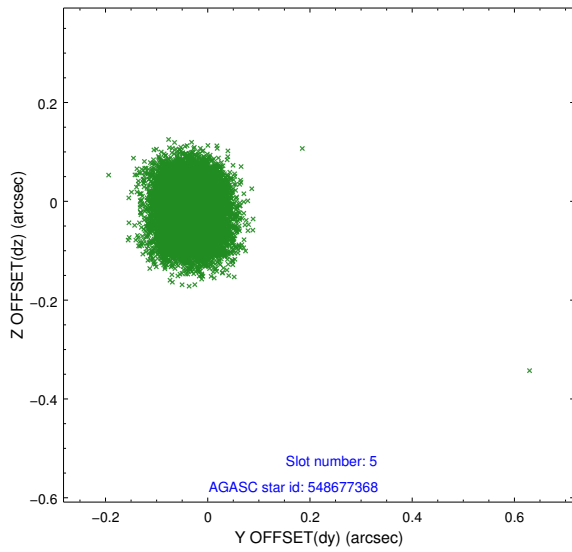
2.4.1 Slot 3



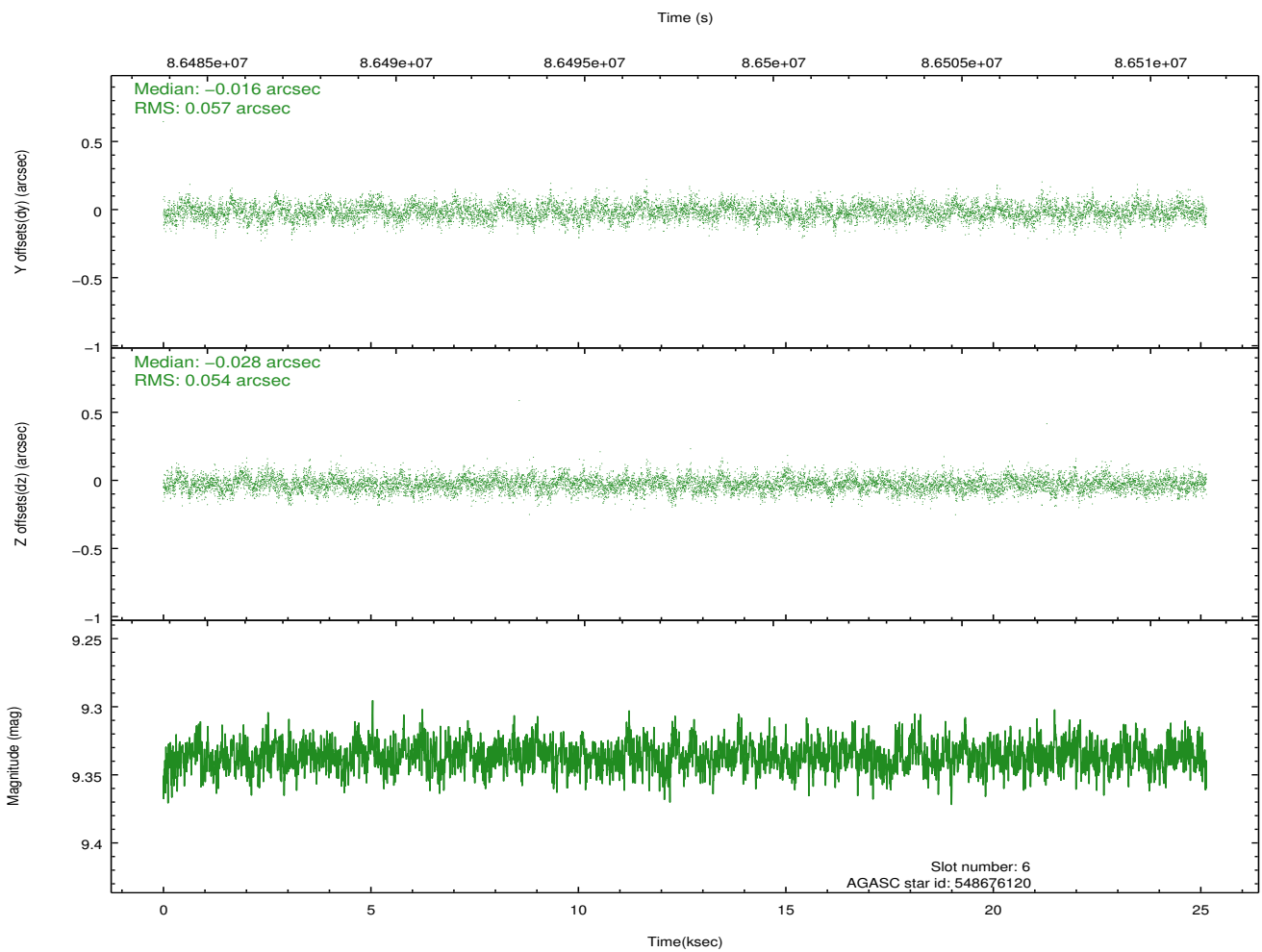
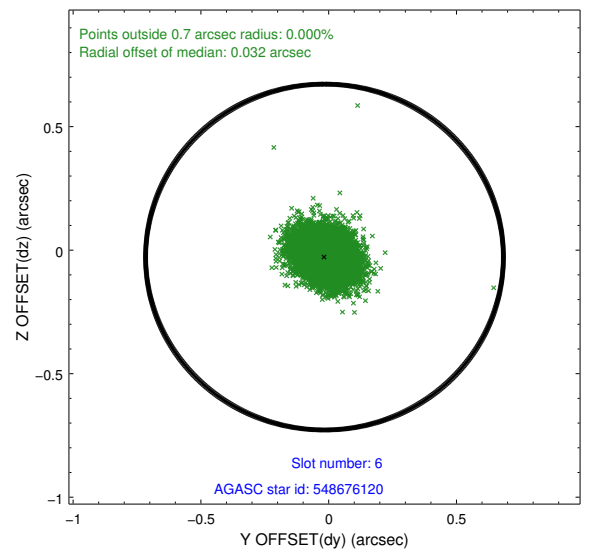
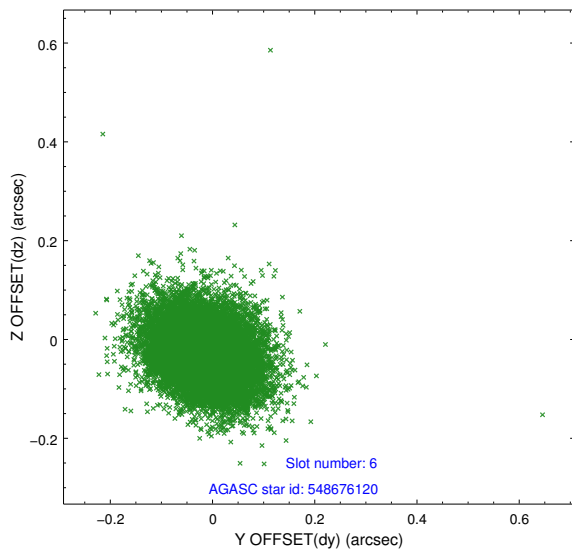
2.4.2 Slot 4



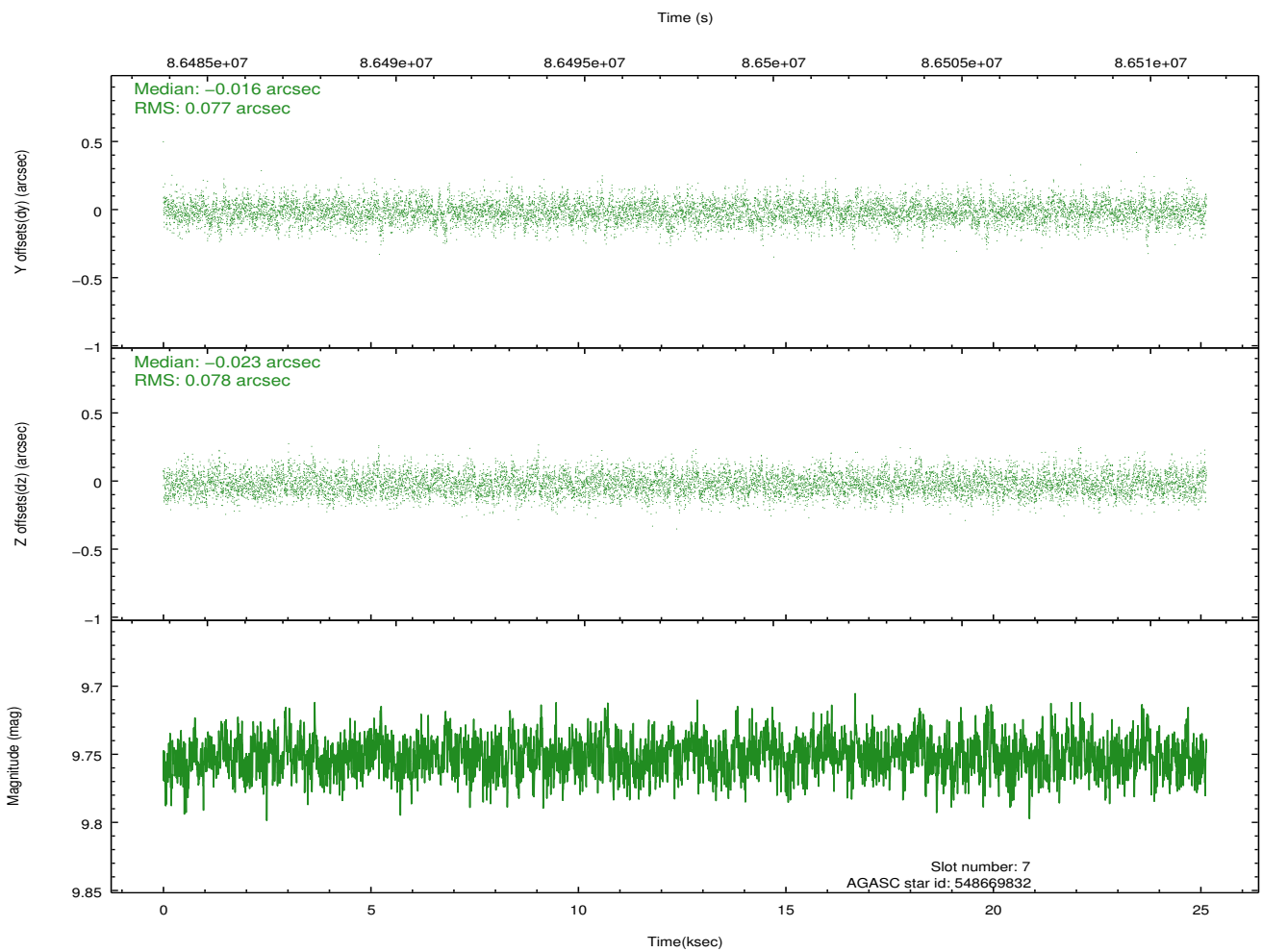
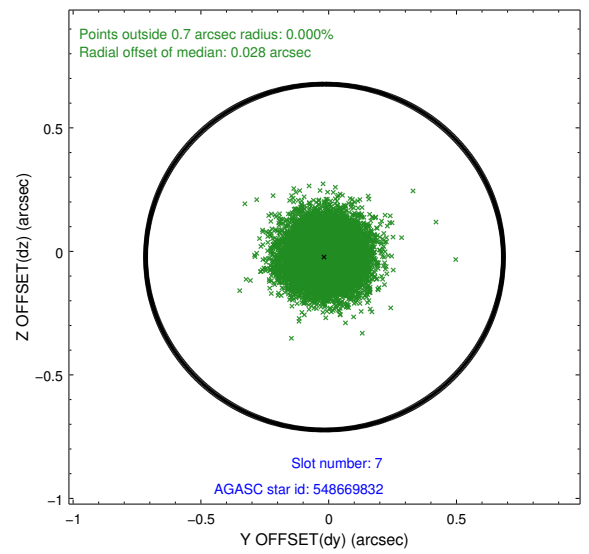
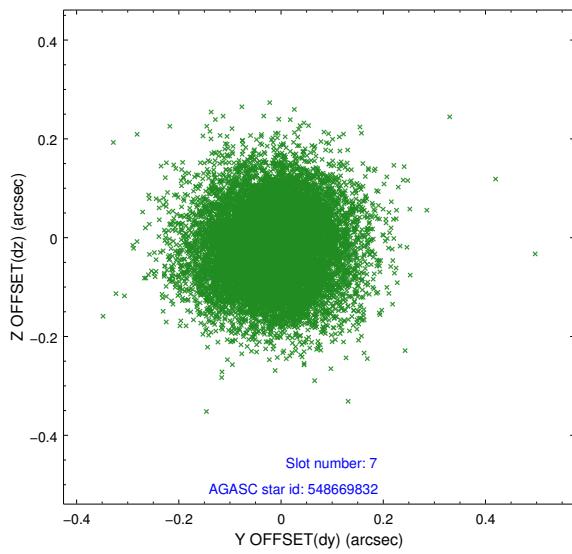
2.4.3 Slot 5



2.4.4 Slot 6

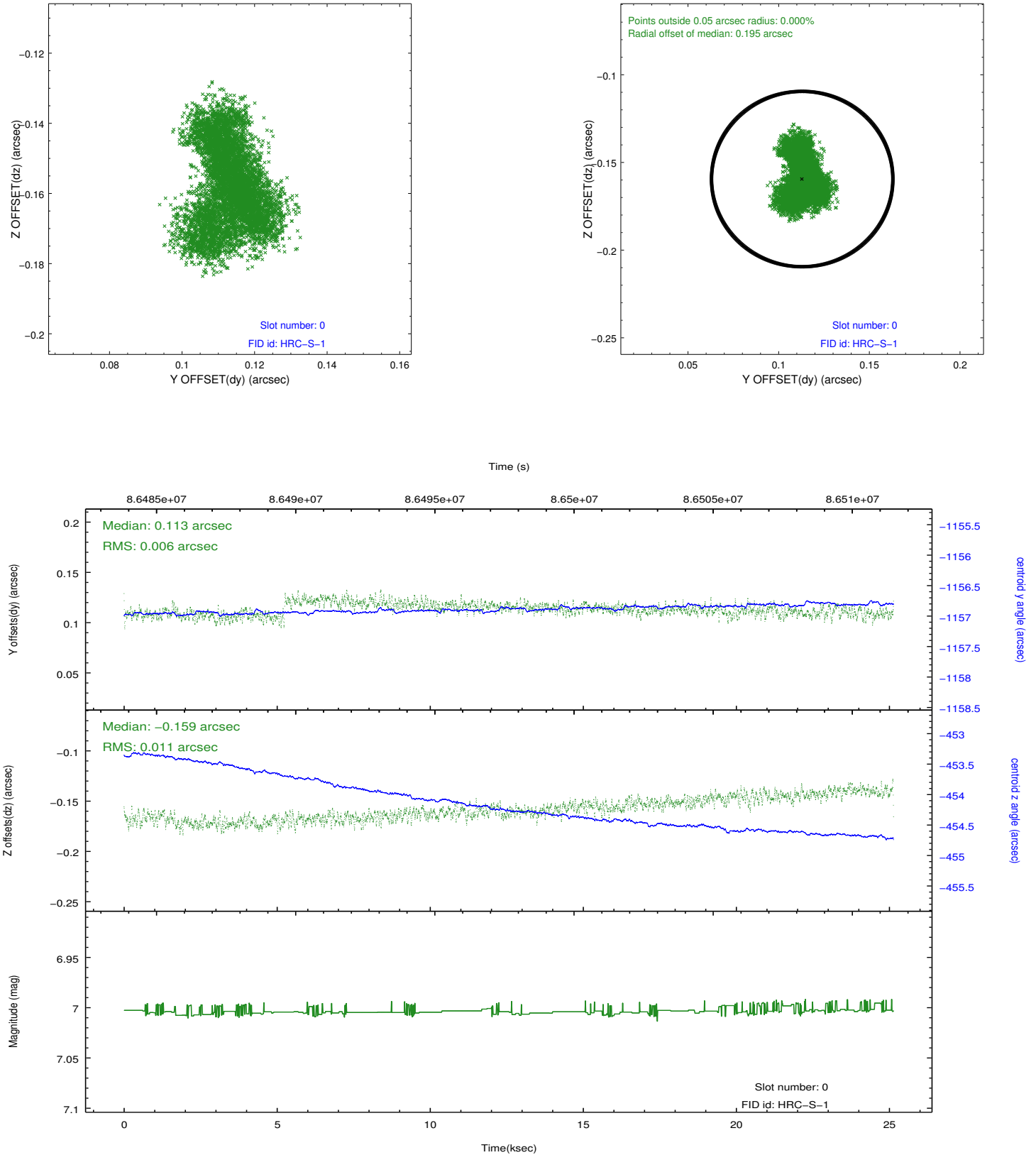


2.4.5 Slot 7

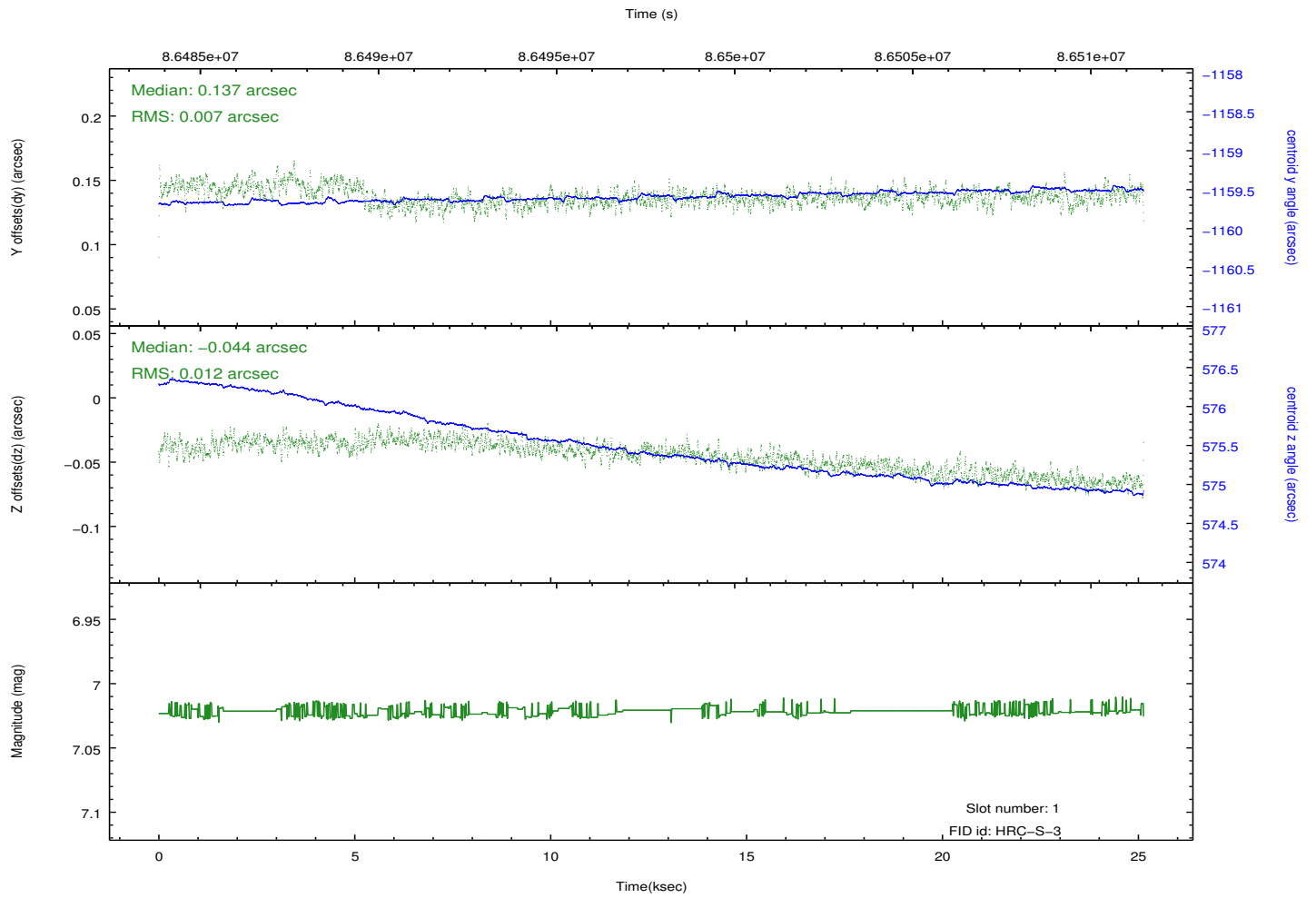
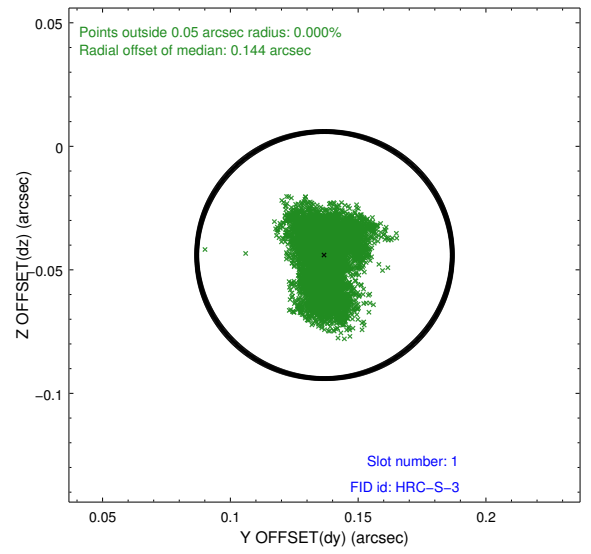
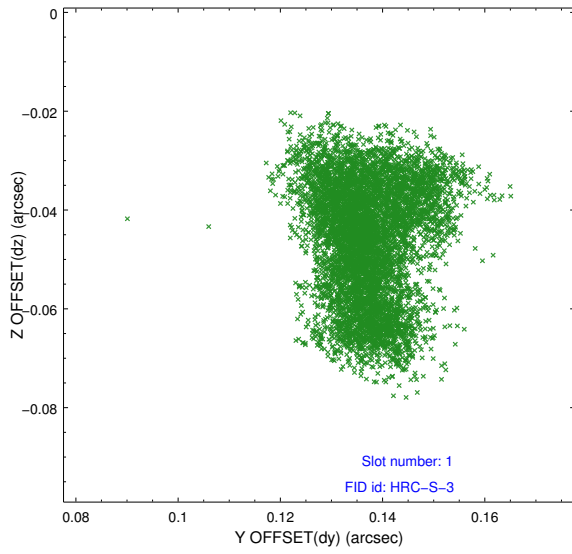


2.5 FID Slots

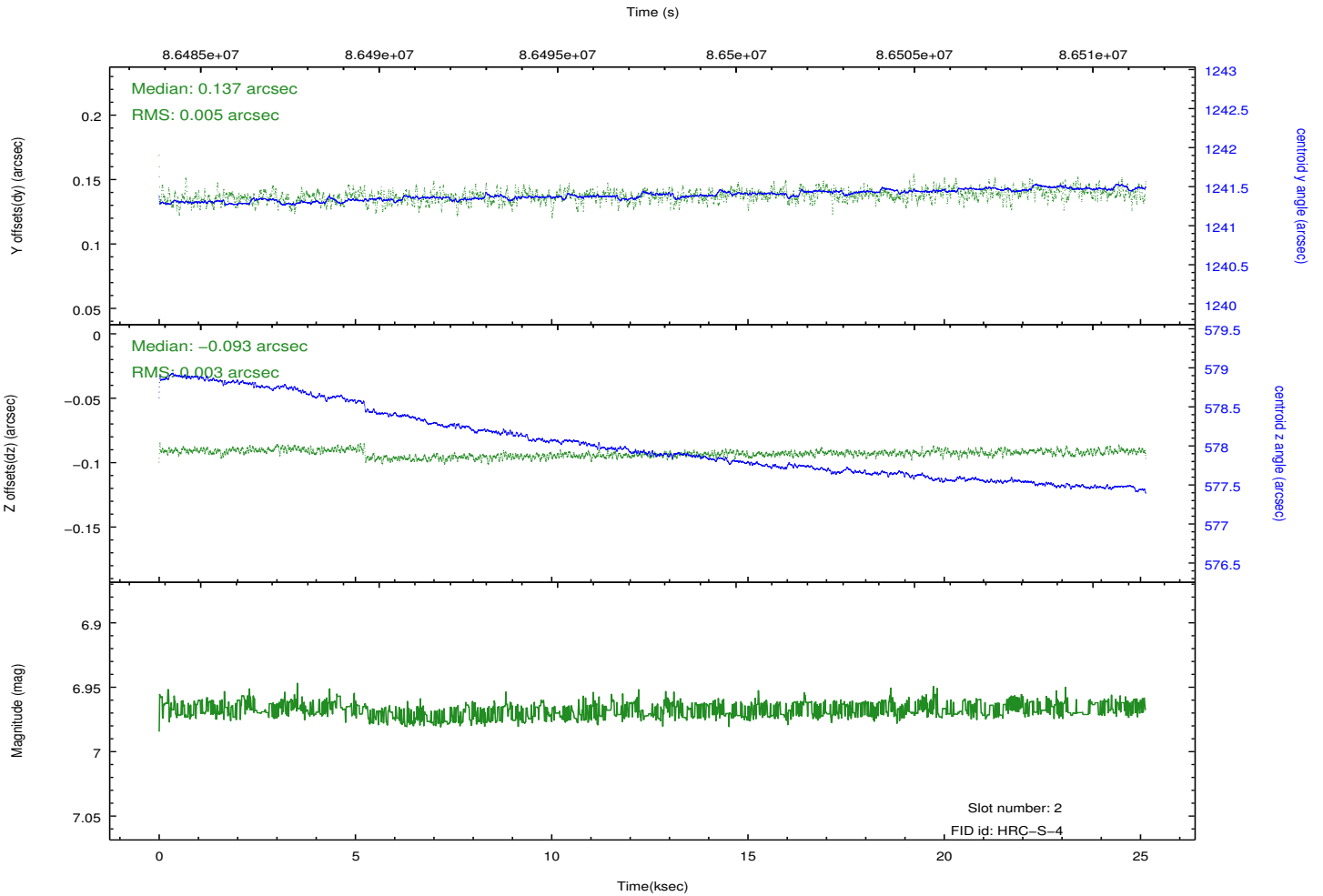
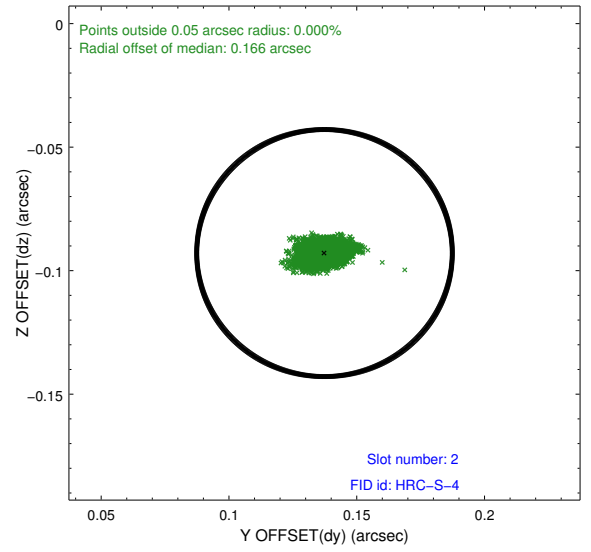
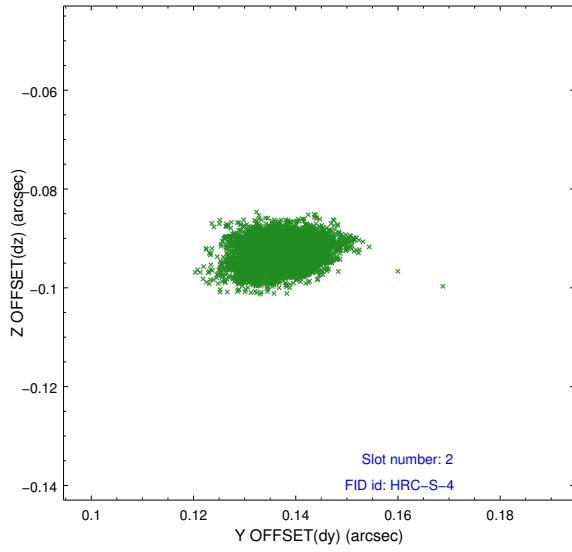
2.5.1 Slot 0



2.5.2 Slot 1

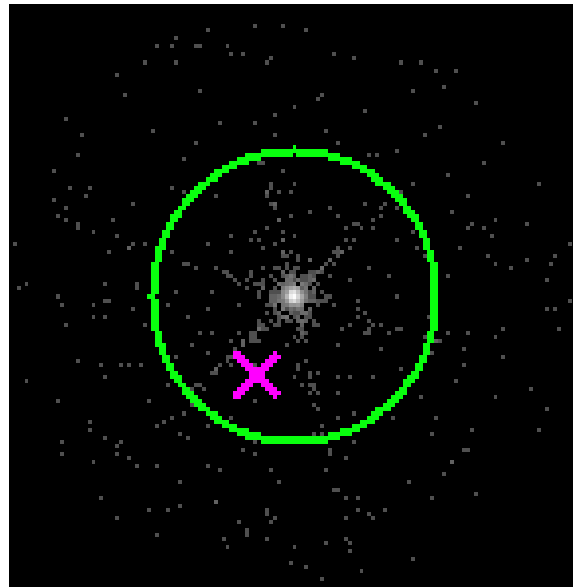


2.5.3 Slot 2

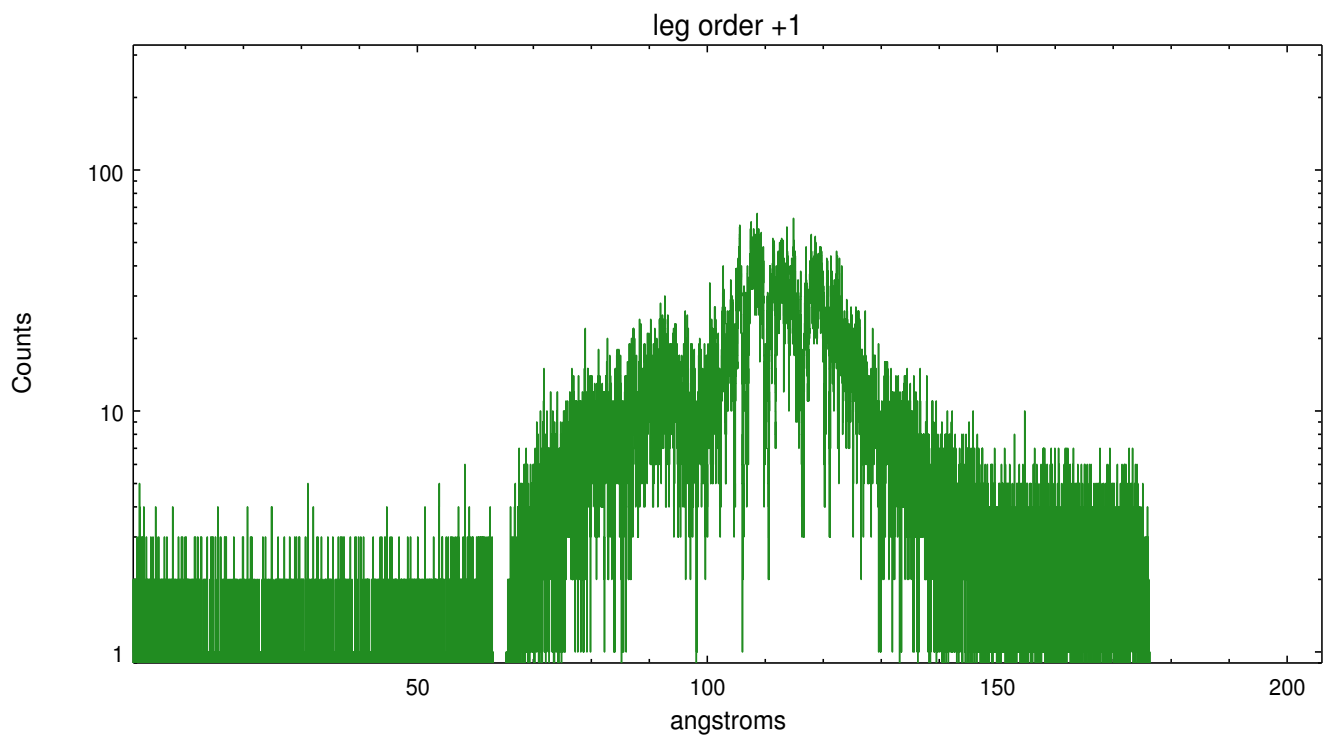
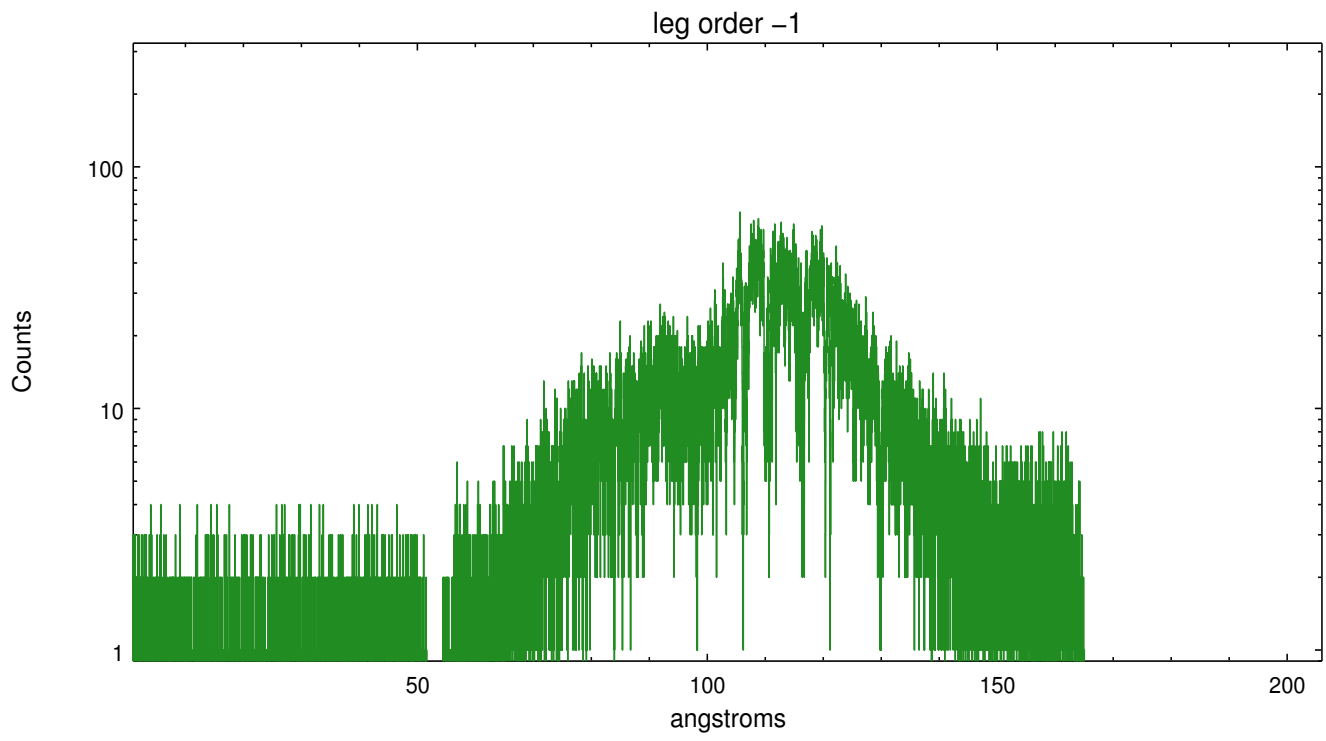


3 Gratings

3.1 LETG Arm



LETG Zero Order



A Summary

A.1 Status

V&V Scientist	Joy Nichols
V&V Date (YYYY-MM-DD)	2012.09.12
V&V Edition	1
V&V Disposition and Status	OK
V&V Charge Time	25.126

A.2 Comments