

V&V Reference Report

L2 ASCDS Version : 8.4.5

Observation 3260 - L2 Version 3
Chandra X-Ray Center

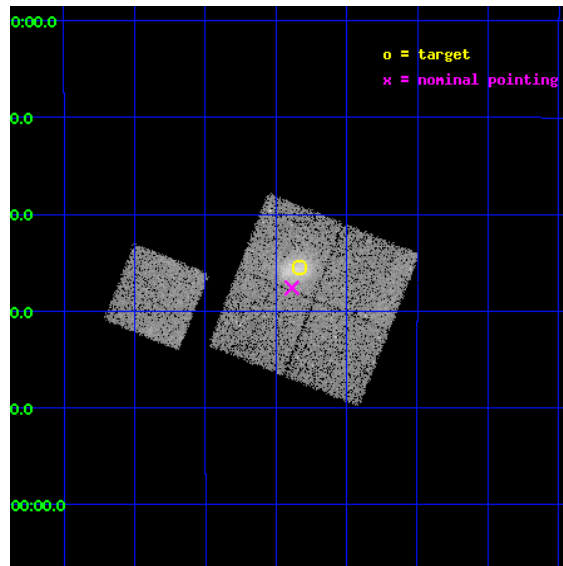
L2 Processing Date : Oct 19 2012

Contents

1	Front	2
2	OBI	3
2.1	OBI	3
2.1.1	Images	3
2.1.2	Bias	3
2.1.3	Parameters	4
2.1.4	Events	4
2.2	Compared Parameters	5
2.3	Aspect	6
2.4	Star Slots	9
2.4.1	Slot 3	9
2.4.2	Slot 4	10
2.4.3	Slot 5	11
2.4.4	Slot 6	12
2.4.5	Slot 7	13
2.5	FID Slots	14
2.5.1	Slot 0	14
2.5.2	Slot 1	15
2.5.3	Slot 2	16
A	Summary	17
A.1	Status	17
A.2	Comments	17

1 Front

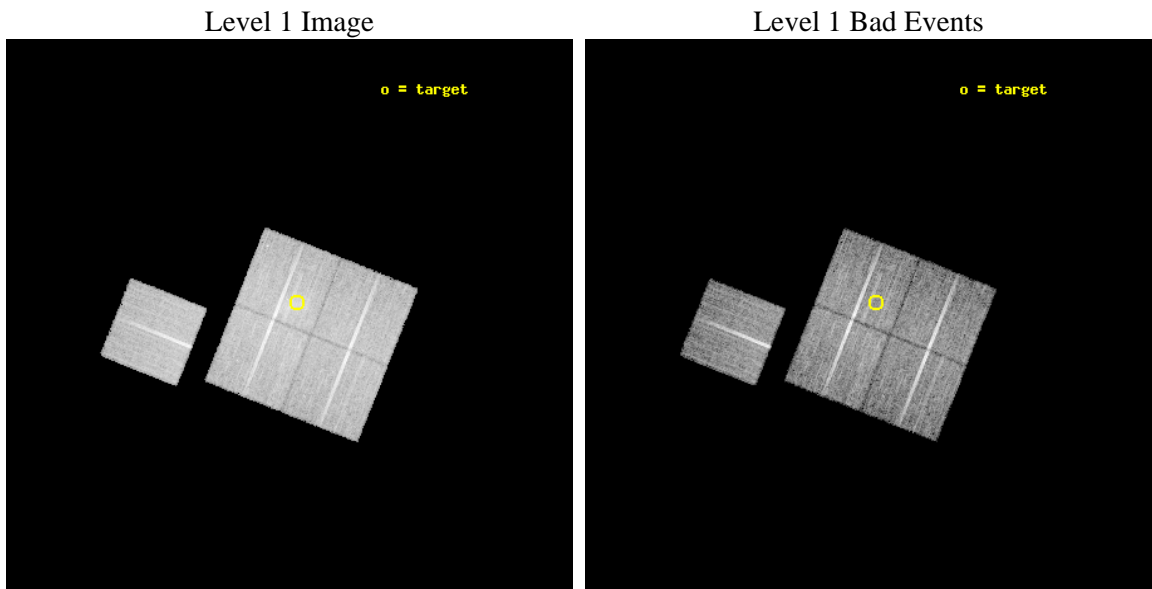
seq_num	800260	Sequence number
obs_id	3260	Observation id
title	OBSERVATION OF MACS CLUSTERS, 0.45	Proposal title
observer	DR. LEON VANSPEYBROECK	Principal investigator
object	MACS-J2243.3-0935	Source name
dtycycle	0	
cycle	P	events from which exps? Prim/Second/Both
ra_targ	340.834583	Observer's specified target RA [deg]
dec_targ	-9.591111	Observer's specified target Dec [deg]
ra_nom	340.8468757321	Nominal RA [deg]
dec_nom	-9.6267324363599	Nominal Dec [deg]
roll_nom	291.73845884154	Nominal Roll [deg]
revision	3	Processing version of data
ontime	20773.099960029	Sum of GTIs [s]
livetime	20501.684116118	Livetime [s]
ontime0	20769.958999783	Sum of GTIs [s]
ontime1	20773.099960029	Sum of GTIs [s]
ontime2	20773.099960029	Sum of GTIs [s]
ontime3	20773.099960029	Sum of GTIs [s]
ontime6	20773.099960029	Sum of GTIs [s]
l2events	54480	Number of level 2 events



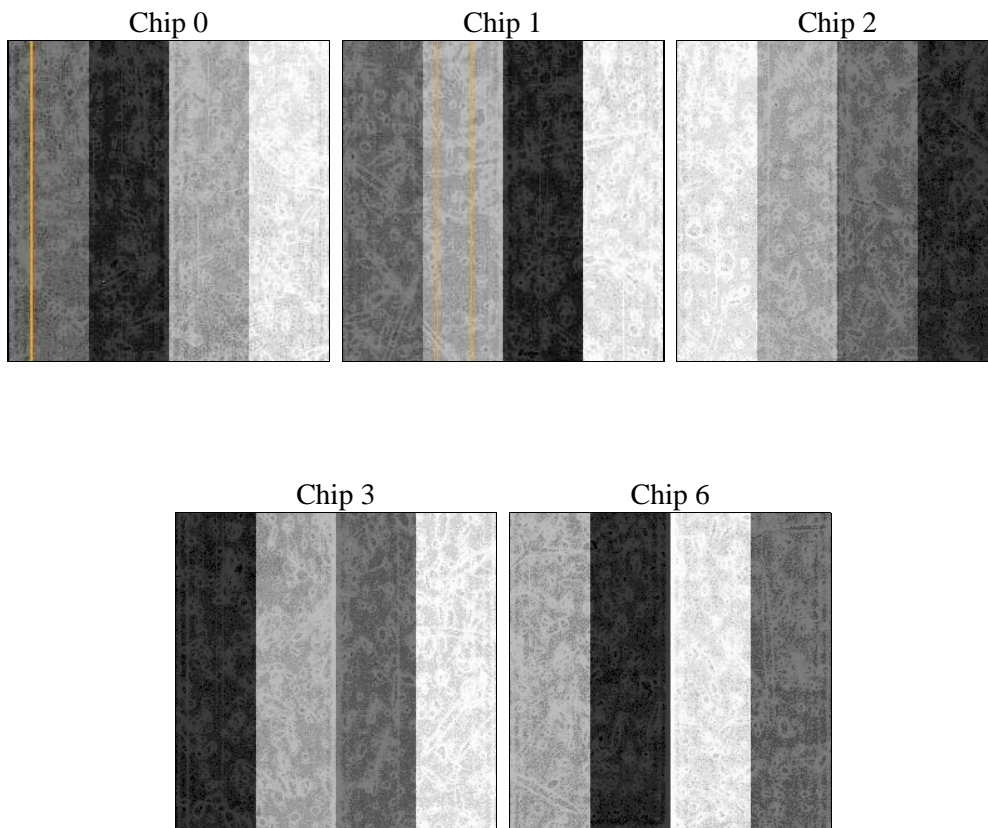
2 OBI

2.1 OBI

2.1.1 Images



2.1.2 Bias



2.1.3 Parameters

obi_num	0	Obi number	sched_exp_time	21000.000000	[s] Scheduled observation exposure time
ascdsver	8.4.5	Processing system revision	ontime	20773.099960029	Sum of GTIs [s]
caldbver	4.5.2	 	ontime0	20769.958999783	Sum of GTIs [s]
date	2012-10-19T06:46:01	Date and time of file creation	ontime1	20773.099960029	Sum of GTIs [s]
revision	3	Processing version of data	ontime2	20773.099960029	Sum of GTIs [s]
			ontime3	20773.099960029	Sum of GTIs [s]
			ontime6	20773.099960029	Sum of GTIs [s]
			l1events	518051	Number of level 1 events

2.1.4 Events

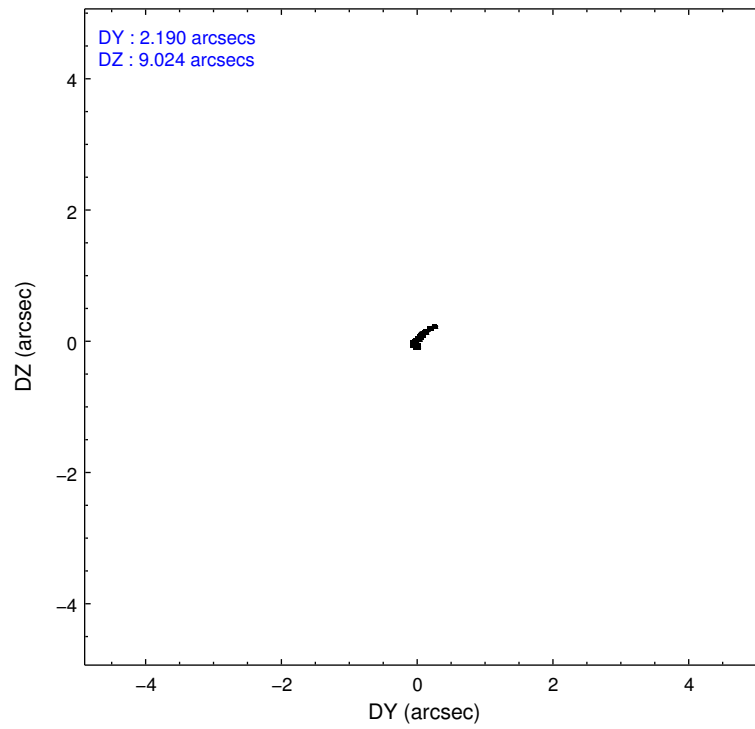
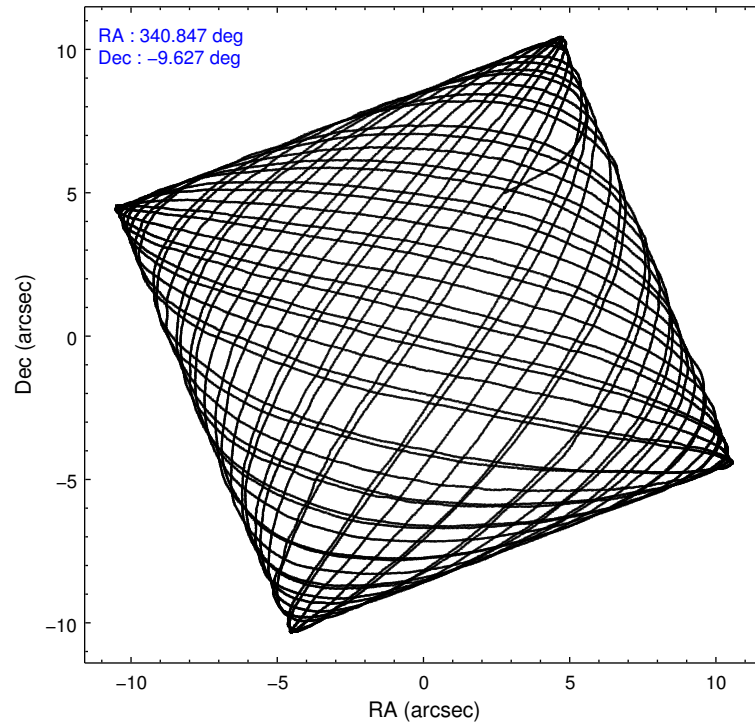
	ccd 0	ccd 1	ccd 2	ccd 3	ccd 6
level 1 events	94796	97236	109543	114087	102389
rejected events	84050	84993	98491	95737	90768
rejected %	88%	87%	89%	83%	88%

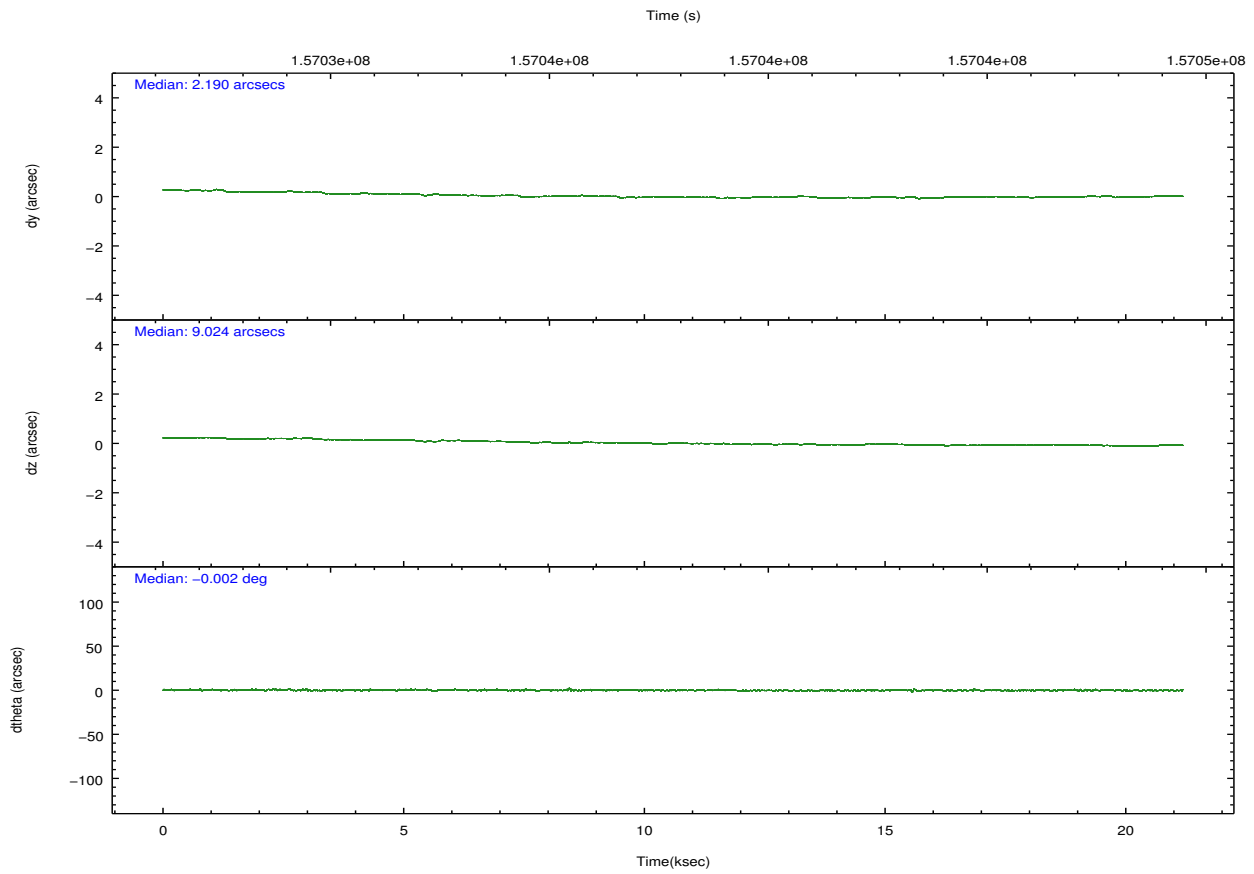
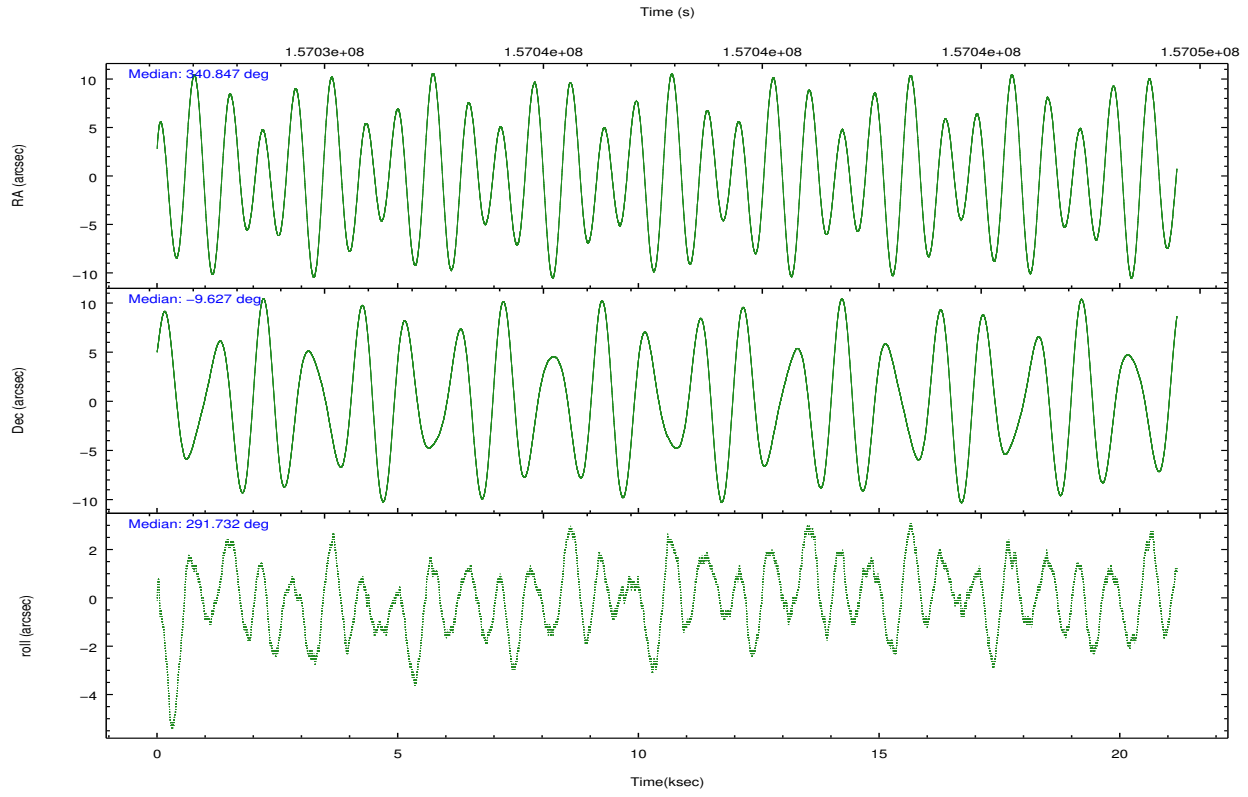
	ccd 0	ccd 1	ccd 2	ccd 3	ccd 6
grade 0 events	4207	4858	4469	10676	4552
	4%	4%	4%	9%	4%
grade 1 events	48	44	50	90	37
	0%	0%	0%	0%	0%
grade 2 events	2245	2441	2422	2879	2323
	2%	2%	2%	2%	2%
grade 3 events	1189	1334	1138	1335	1266
	1%	1%	1%	1%	1%
grade 4 events	1138	1353	1153	1343	1228
	1%	1%	1%	1%	1%
grade 5 events	3469	3797	3369	3964	4107
	3%	3%	3%	3%	4%
grade 6 events	1968	2258	1874	2119	2252
	2%	2%	1%	1%	2%
grade 7 events	80532	81151	95068	91681	86624
	84%	83%	86%	80%	84%

2.2 Compared Parameters

Parameter	Planned	Actual	Parameter	Planned	Actual
Instrument	ACIS	ACIS	Obspar format version number	7	7
Detector	ACIS-01236	ACIS-01236	Obspar file type	PREDICTED	ACTUAL
Grating	NONE	NONE	Obspar update status	NONE	UPDATED
Data mode	VFAINT	VFAINT	Number of optional ACIS chips dropped	0	0
Observation mode	POINTING	POINTING	On-chip summing requested	N	N
[deg] Pointing RA	340.825011	340.8468757320995	Subarray requested	NONE	NONE
[deg] Pointing Dec	-9.609877	-9.626732436359868	Alternating exposures requested	N	N
[deg] Pointing Roll	291.526122	291.7384588415409	[s] Primary exposure time	0.000000	3.1
[mm] SIM focus pos	-0.782348	-0.7809083437167272			
[mm] SIM defocus	0	0.001439871863259334			
[mm] SIM translation stage pos	-227.742463	-227.734108438797			
[mm] SIM translation stage offset	-5.85	-5.858344564132665			
[s] Observation start time (MET)	157027418.184000	157026740.63638			
Observation start date	2002-12-23T10:42:34	2002-12-23T10:32:20			
[s] Observation end time (MET)	157048418.184000	157048747.8998			
Observation end date	2002-12-23T16:32:34	2002-12-23T16:39:07			
Read mode	TIMED	TIMED			

2.3 Aspect



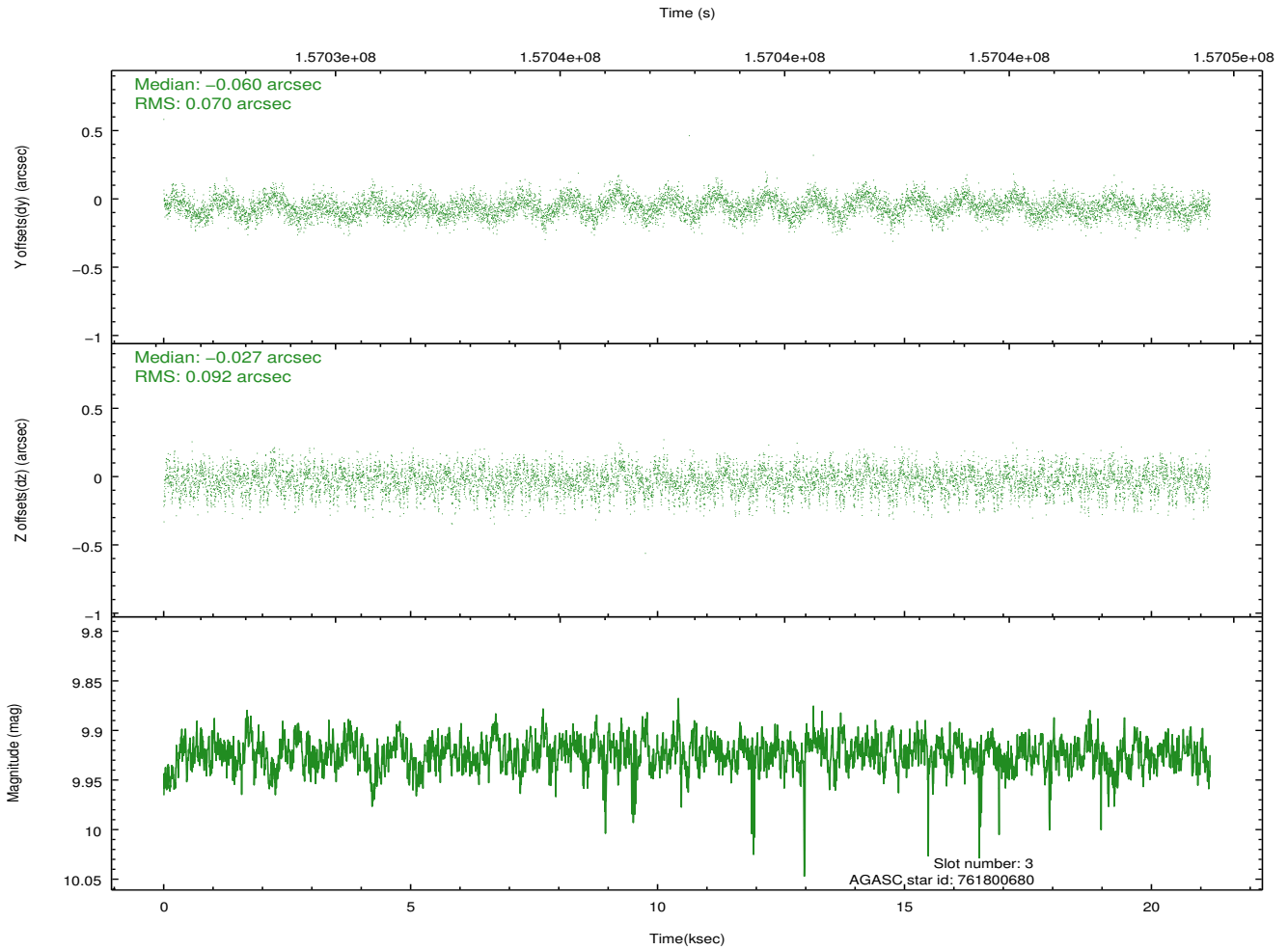
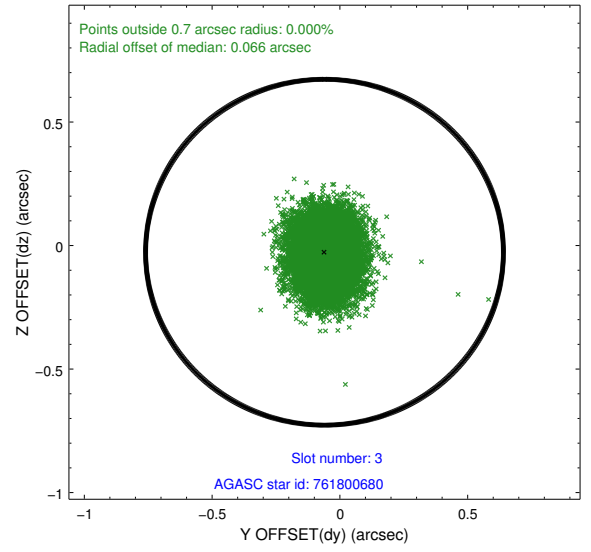
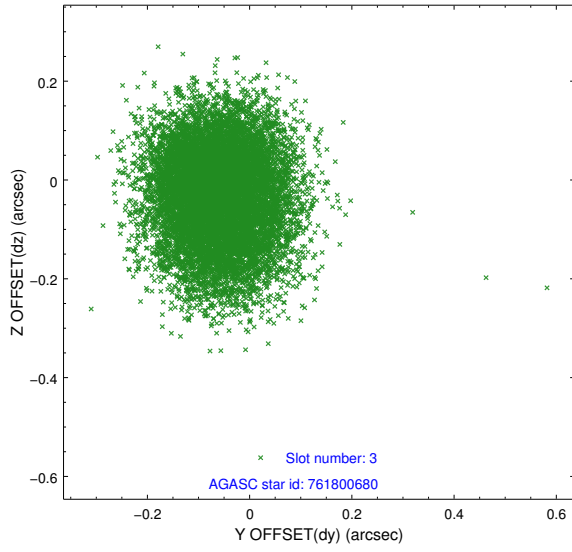


Slot Statistics

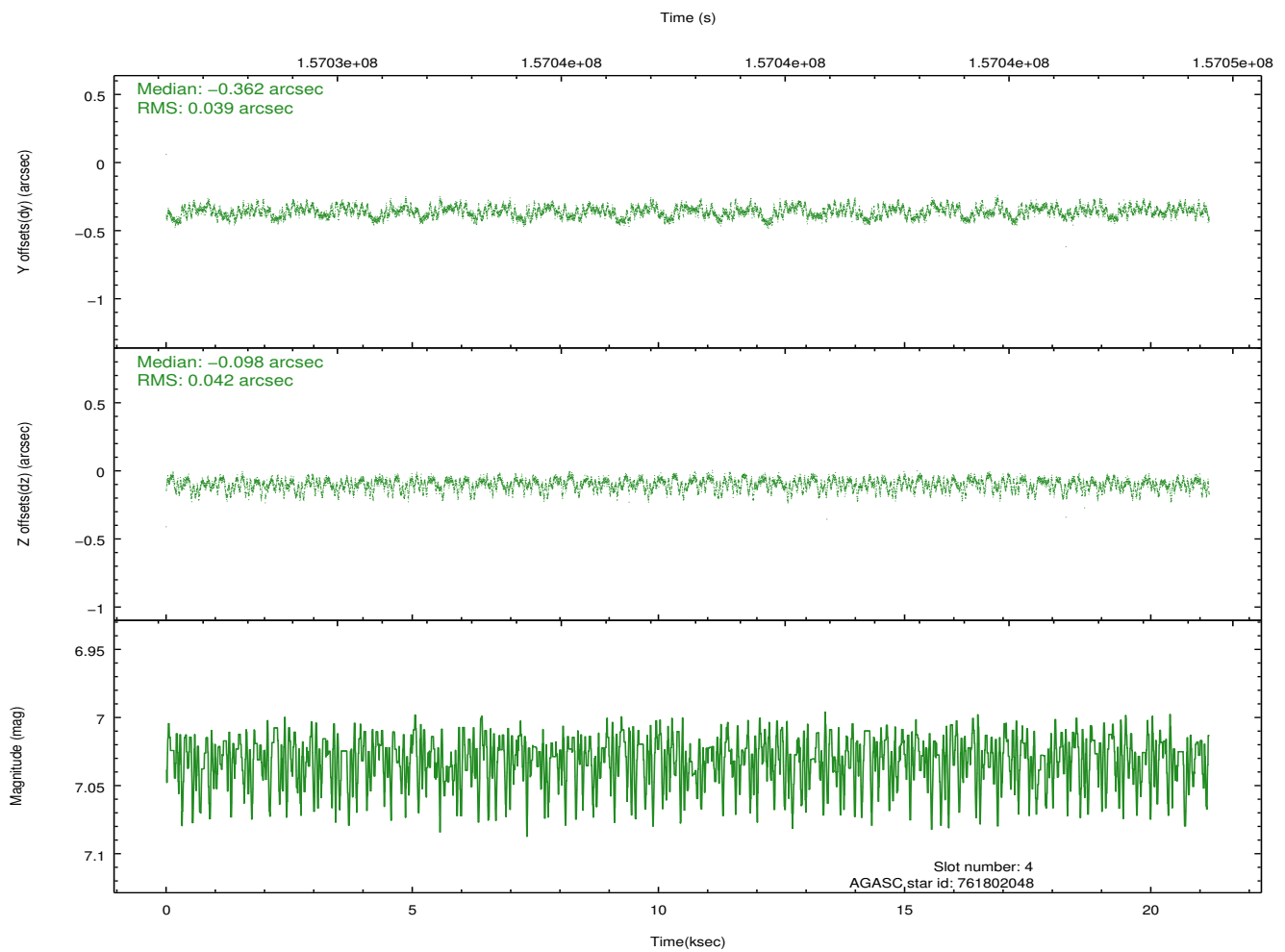
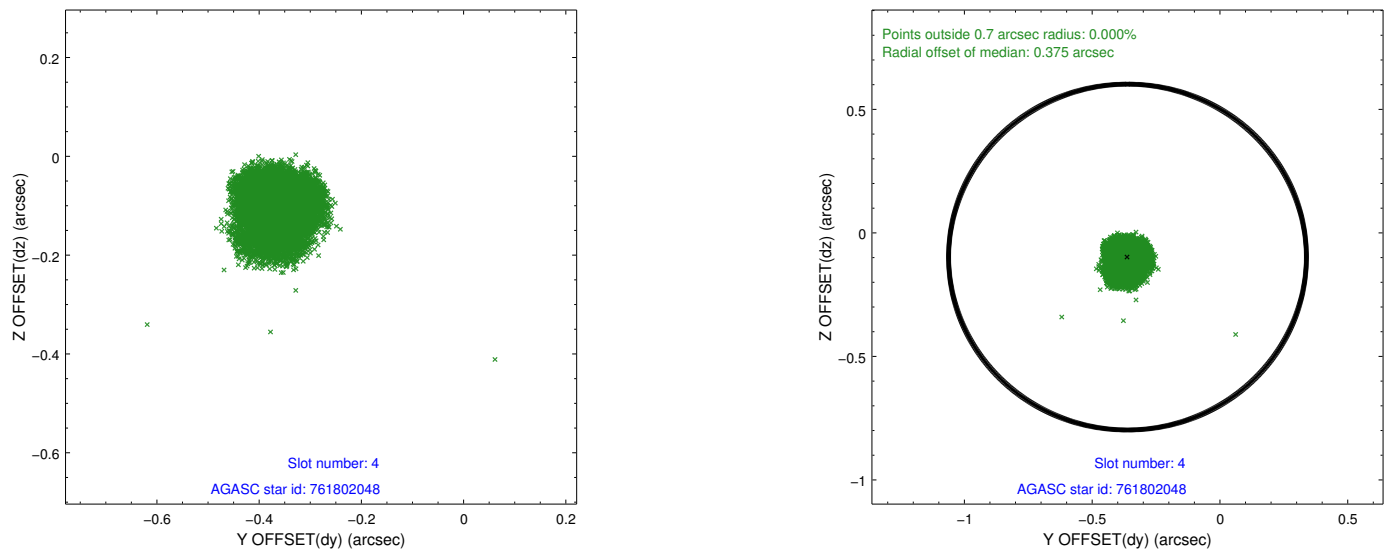
slot	status	id	mag	n_pts	med_dy	med_dz	dr1	dr2	ra	dec	mean_y	mean_z
0	FID	ACIS-I-1	7.24	5167	0.033	-0.013	0.009	0.017	0.000000	0.000000	937.50	-952.76
1	FID	ACIS-I-5	7.23	5166	-0.130	0.059	0.007	0.011	0.000000	0.000000	-1810.66	944.71
2	FID	ACIS-I-6	7.25	5167	0.006	0.024	0.008	0.013	0.000000	0.000000	402.85	1589.36
3	GUIDE	761800680	9.92	10326	-0.060	-0.027	0.123	0.199	340.176971	-9.692851	-563.37	-2249.29
4	GUIDE	761802048	7.03	10335	-0.362	-0.098	0.062	0.096	340.033256	-9.359234	-1868.20	-2286.26
5	GUIDE	762190344	6.97	10335	0.048	0.074	0.058	0.091	340.755068	-10.102687	1559.68	-881.49
6	GUIDE	762192288	9.44	10325	0.355	-0.071	0.107	0.171	340.590512	-10.369462	2240.41	-1775.86
7	GUIDE	761798360	8.03	10333	0.022	0.125	0.079	0.121	341.580055	-9.698722	1283.97	2374.01

2.4 Star Slots

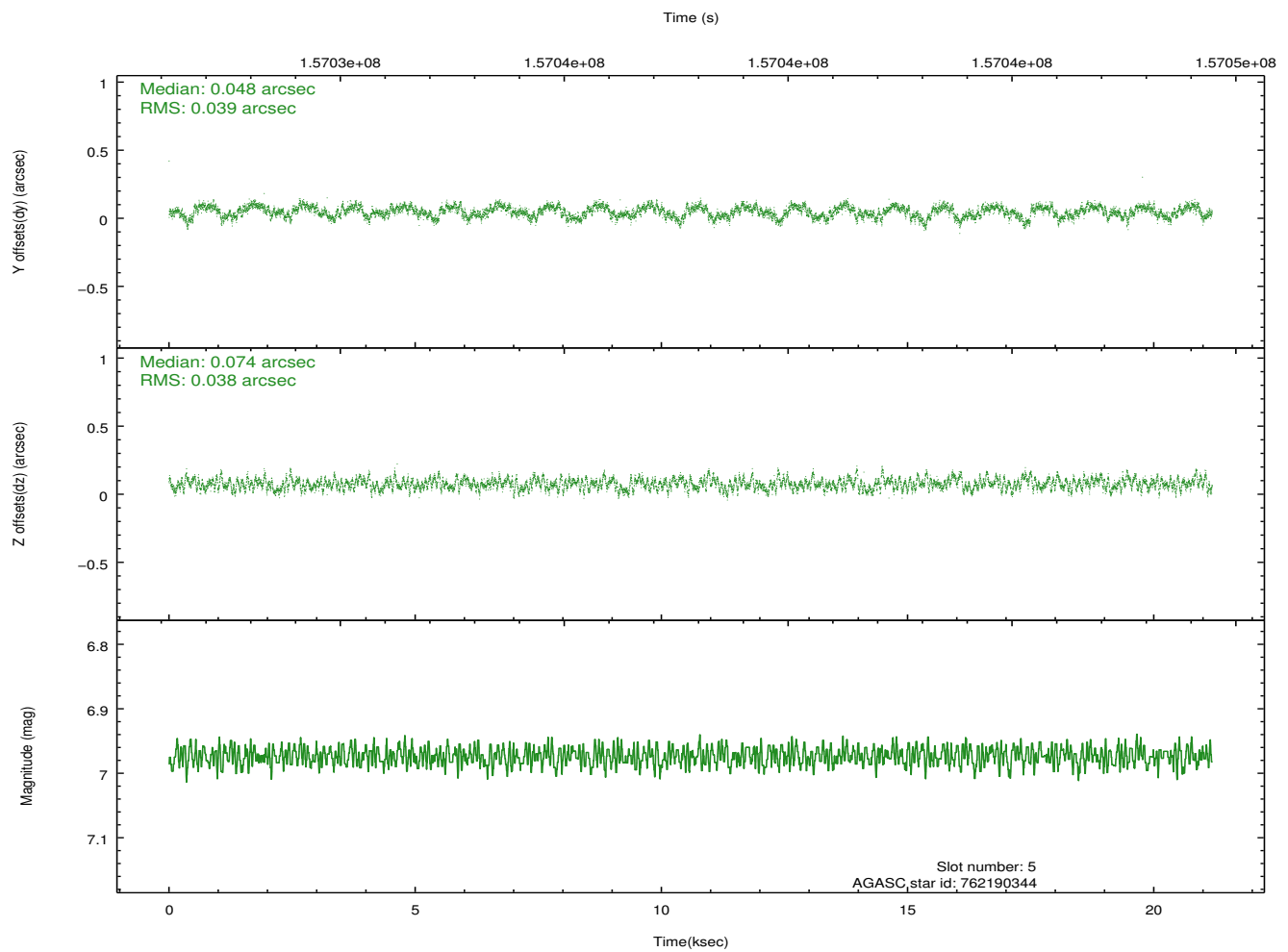
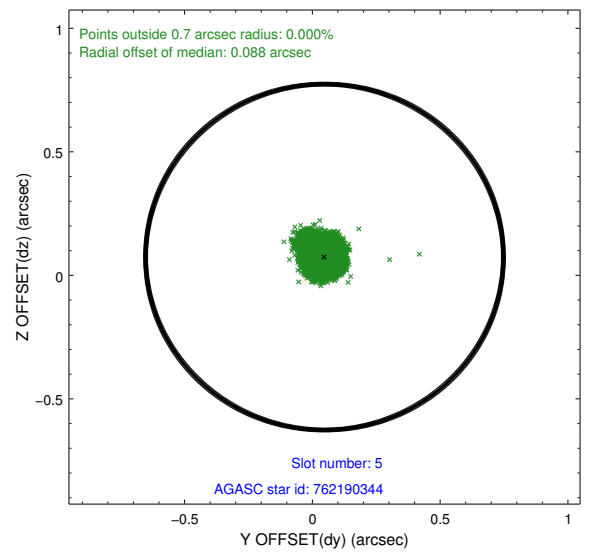
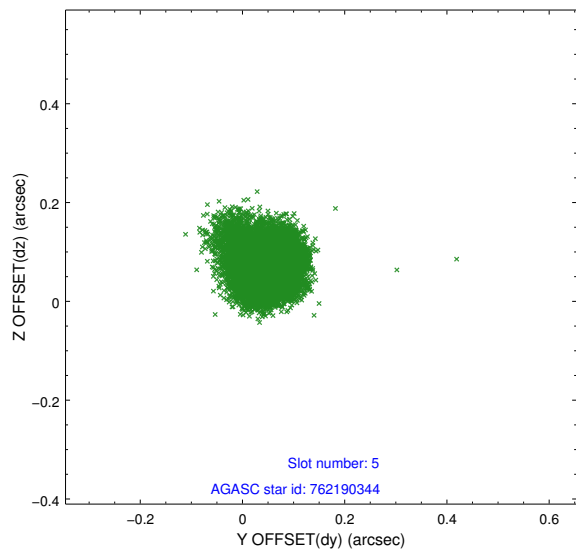
2.4.1 Slot 3



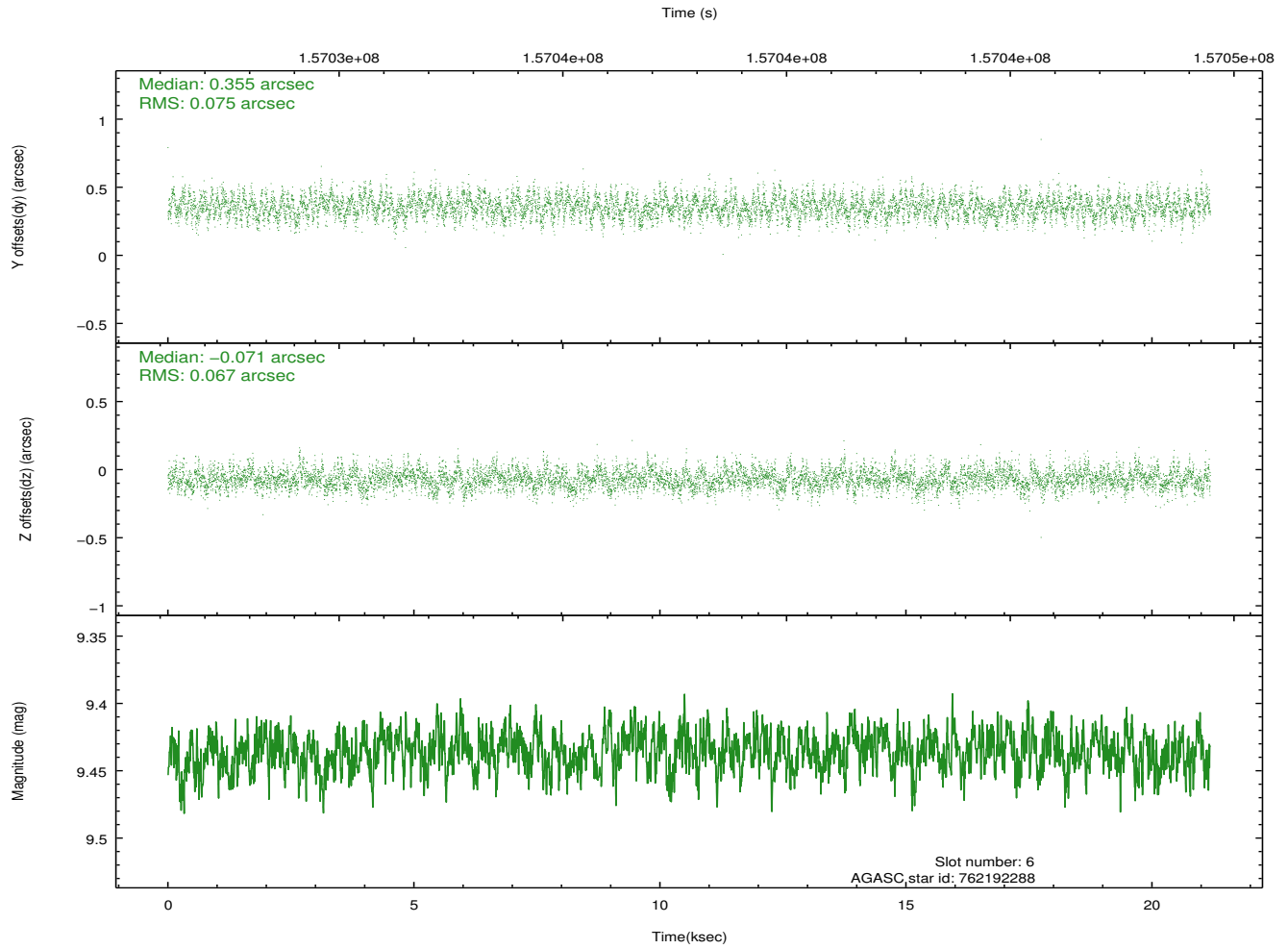
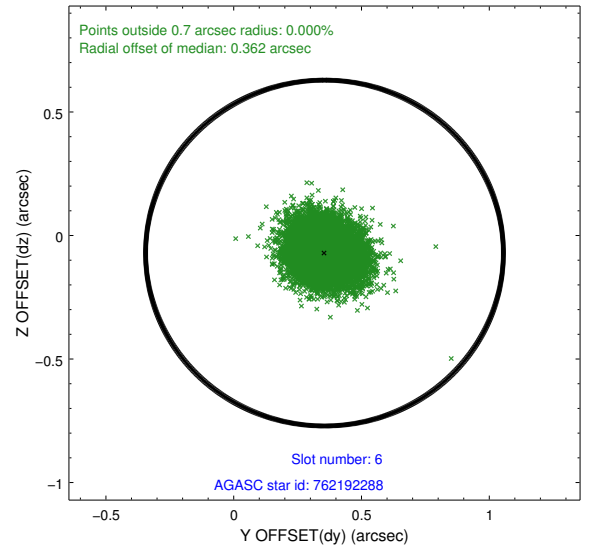
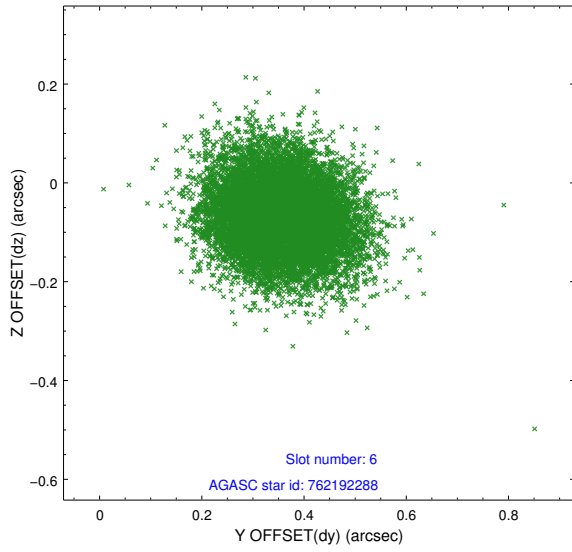
2.4.2 Slot 4



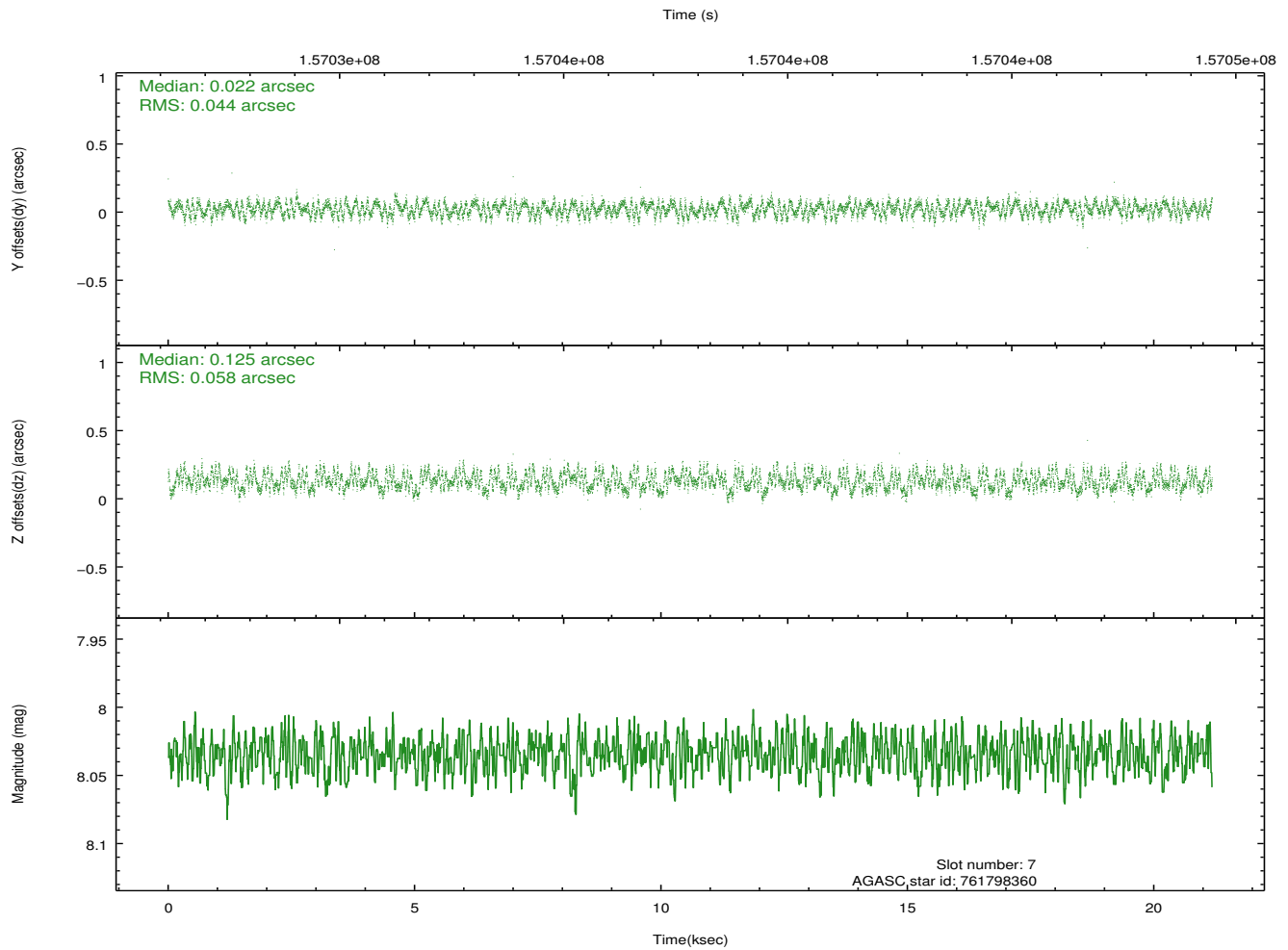
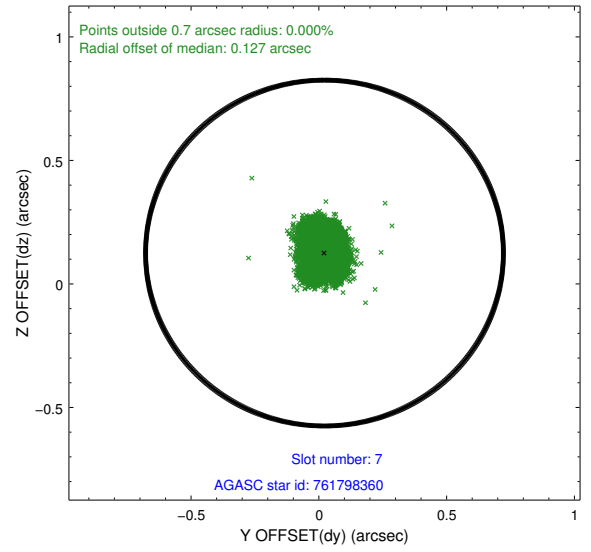
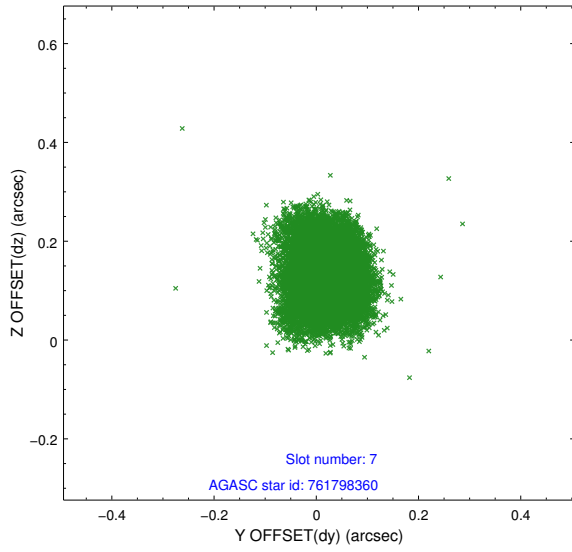
2.4.3 Slot 5



2.4.4 Slot 6

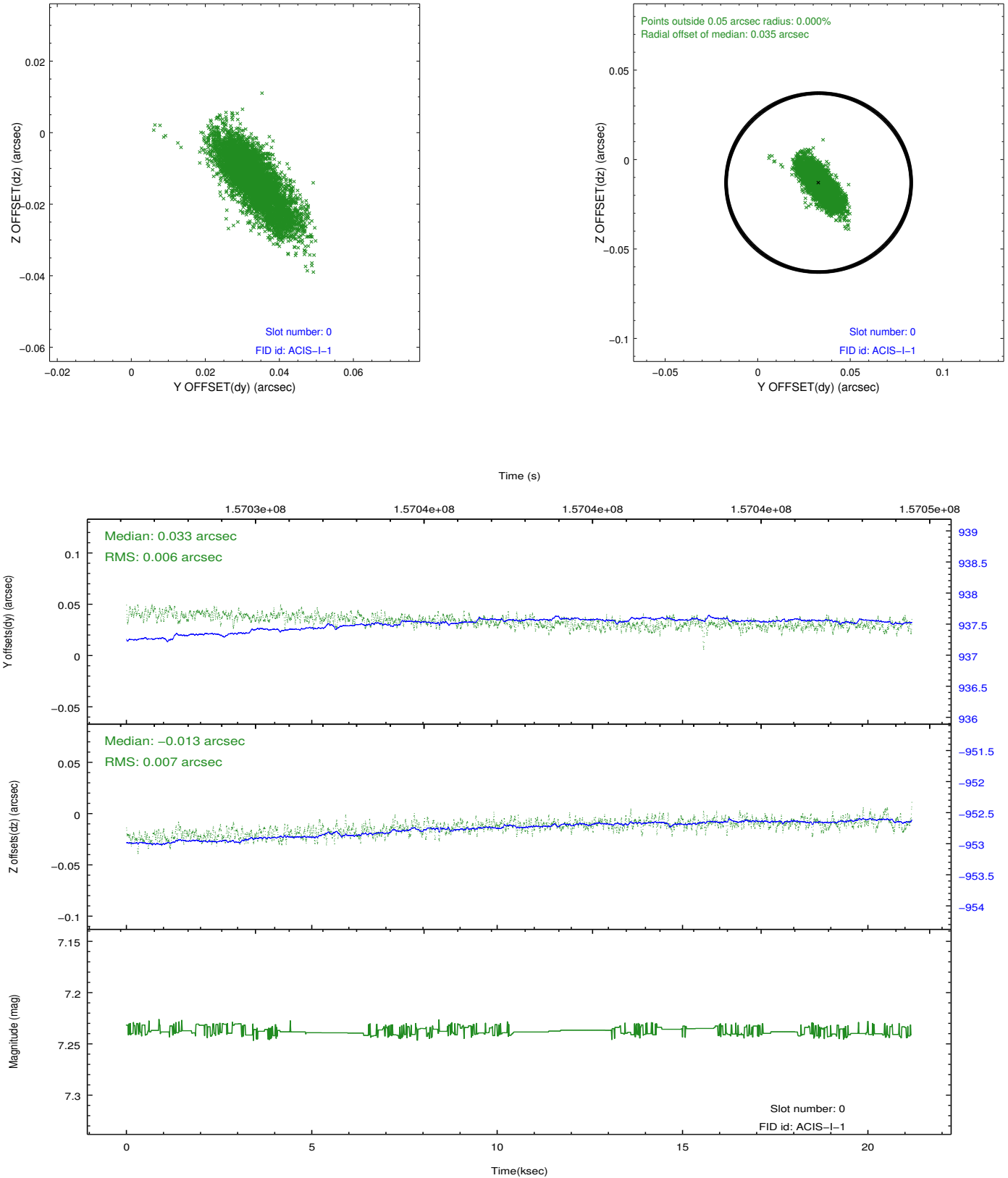


2.4.5 Slot 7

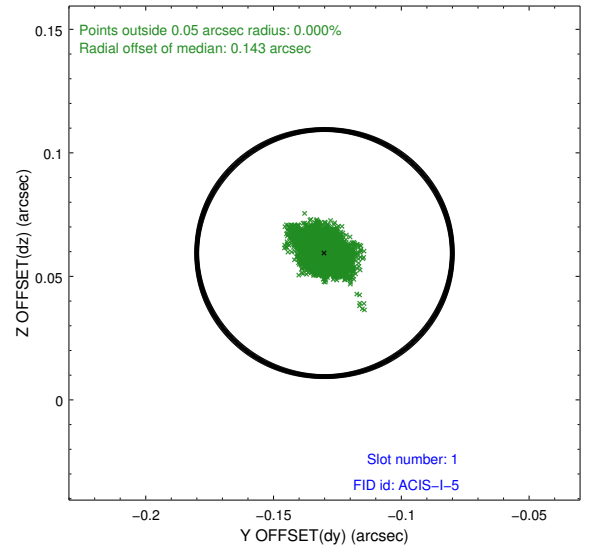
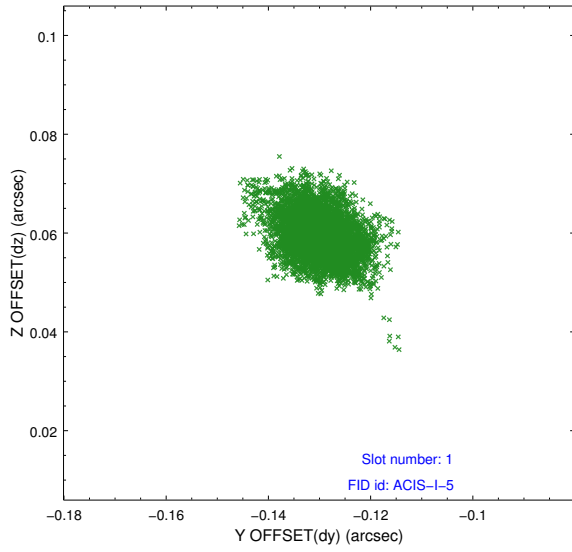


2.5 FID Slots

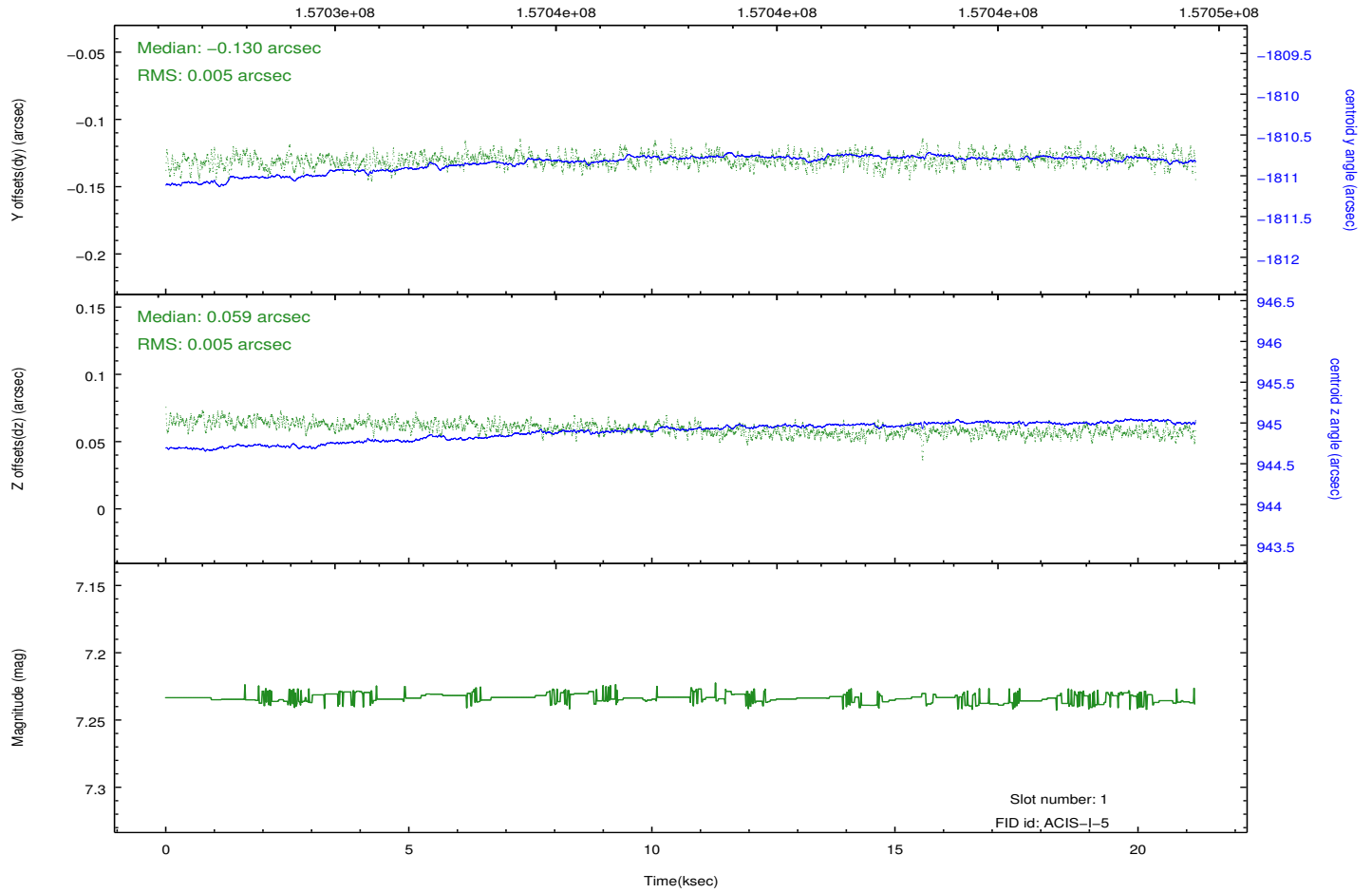
2.5.1 Slot 0



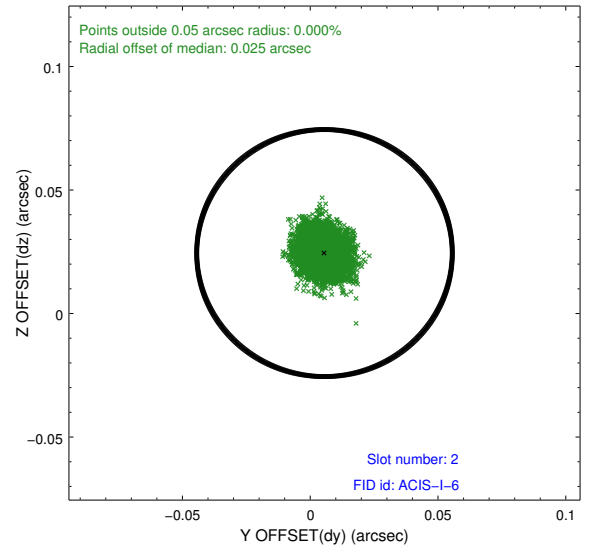
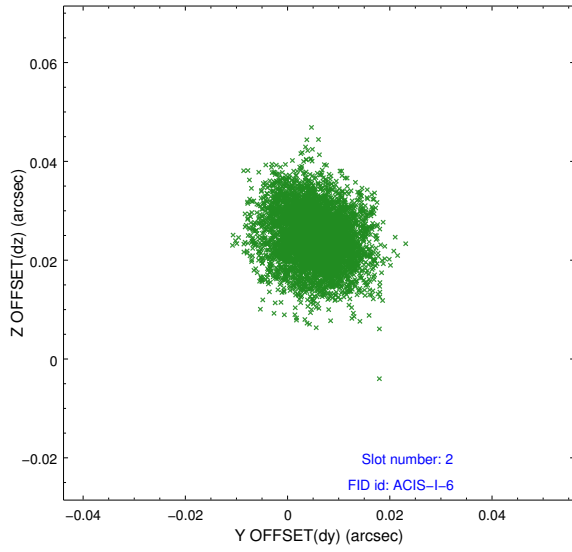
2.5.2 Slot 1



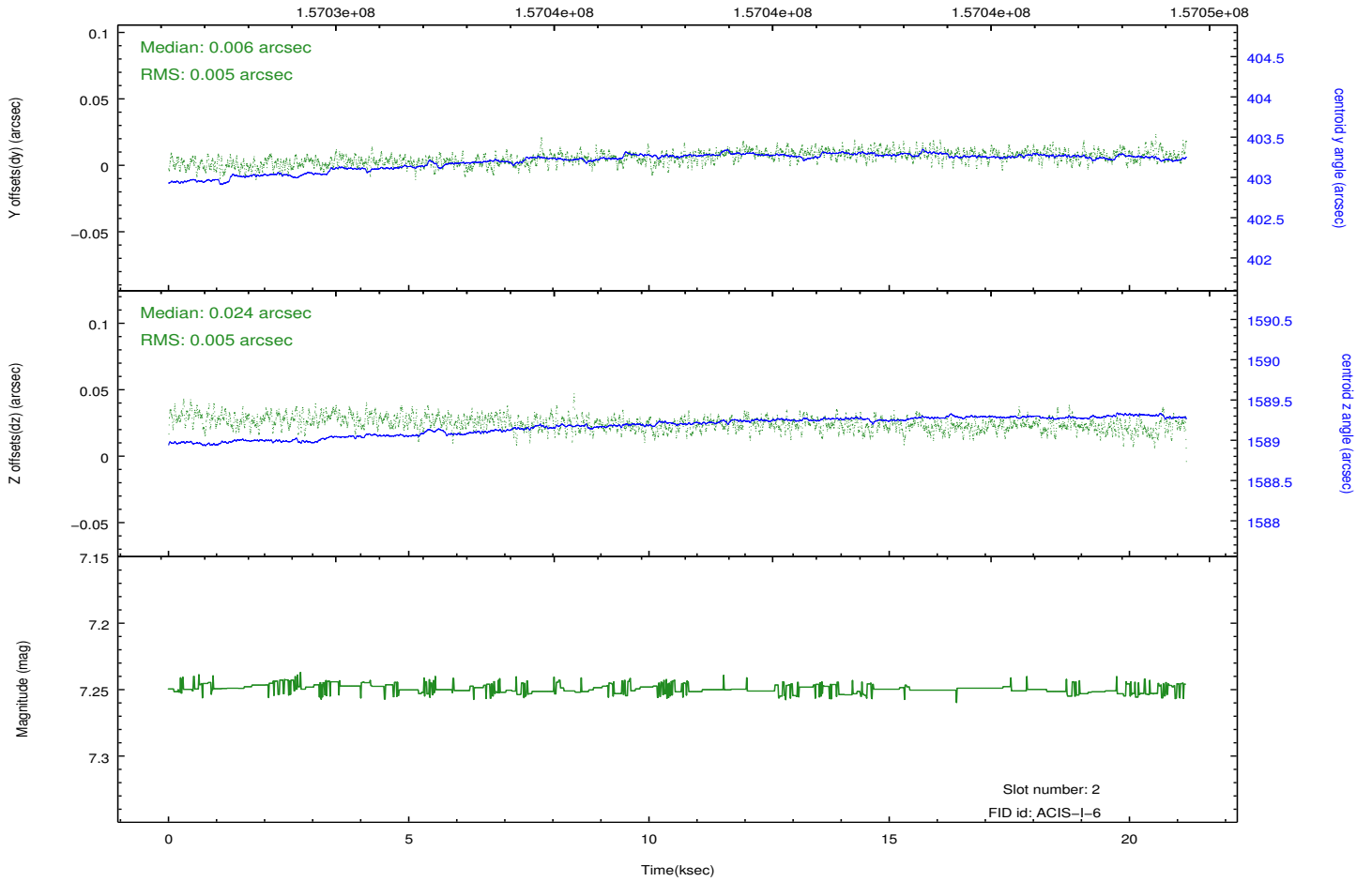
Time (s)



2.5.3 Slot 2



Time (s)



A Summary

A.1 Status

V&V Scientist	Jen Lauer
V&V Date (YYYY-MM-DD)	2012.10.31
V&V Edition	1
V&V Disposition and Status	OK
V&V Charge Time	20.776

A.2 Comments