

V&V Reference Report

L2 ASCDS Version : 8.4.5

Observation 3450 - L2 Version 3
Chandra X-Ray Center

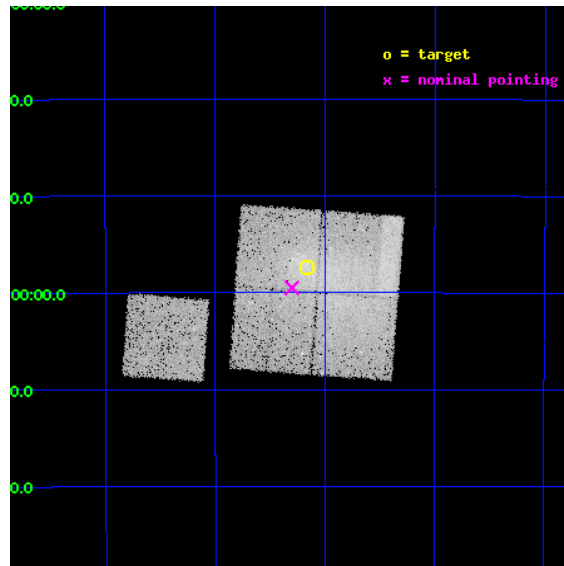
L2 Processing Date : Oct 4 2012

Contents

1	Front	2
2	OBI	3
2.1	OBI	3
2.1.1	Images	3
2.1.2	Bias	3
2.1.3	Parameters	4
2.1.4	Events	4
2.2	Compared Parameters	5
2.3	Aspect	6
2.4	Star Slots	9
2.4.1	Slot 3	9
2.4.2	Slot 4	10
2.4.3	Slot 5	11
2.4.4	Slot 6	12
2.4.5	Slot 7	13
2.5	FID Slots	14
2.5.1	Slot 0	14
2.5.2	Slot 1	15
2.5.3	Slot 2	16
A	Summary	17
A.1	Status	17
A.2	Comments	17

1 Front

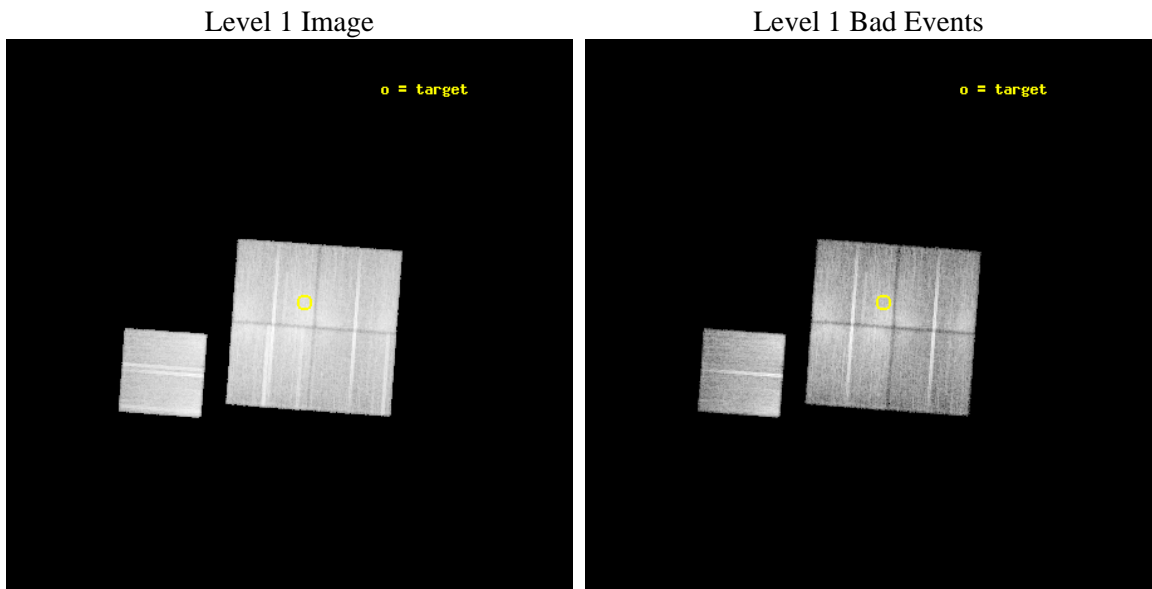
seq_num	800202	Sequence number
obs_id	3450	Observation id
title	GAS DENSITY DISCONTINUITIES IN MERGING CLUSTERS	Proposal title
observer	Dr Maxim Markevitch	Principal investigator
object	A3376	Source name
dtycycle	0	
cycle	P	events from which exps? Prim/Second/Both
ra_targ	90.54167	Observer's specified target RA [deg]
dec_targ	-39.95583	Observer's specified target Dec [deg]
ra_nom	90.575270494615	Nominal RA [deg]
dec_nom	-39.991783756014	Nominal Dec [deg]
roll_nom	274.23025873232	Nominal Roll [deg]
revision	3	Processing version of data
ontime	20109.430839479	Sum of GTIs [s]
livetime	19846.686321214	Livetime [s]
ontime0	20103.025898635	Sum of GTIs [s]
ontime1	20109.348759472	Sum of GTIs [s]
ontime2	20103.107839048	Sum of GTIs [s]
ontime3	20109.430839479	Sum of GTIs [s]
ontime6	20109.266679481	Sum of GTIs [s]
l2events	94675	Number of level 2 events



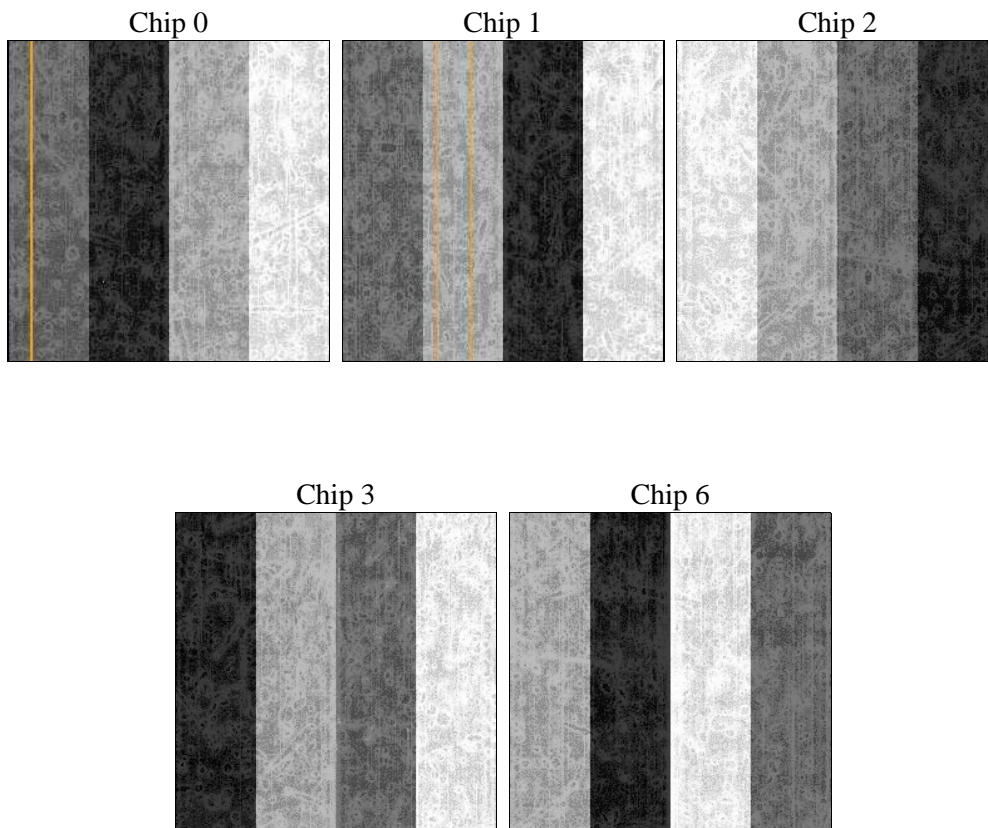
2 OBI

2.1 OBI

2.1.1 Images



2.1.2 Bias



2.1.3 Parameters

obi_num	2	Obi number	sched_exp_time	20000.000000	[s] Scheduled observation exposure time
ascdsver	8.4.5	Processing system revision	ontime	20109.430839479	Sum of GTIs [s]
caldbver	4.5.2	 	ontime0	20103.025898635	Sum of GTIs [s]
date	2012-10-04T11:55:35	Date and time of file creation	ontime1	20109.348759472	Sum of GTIs [s]
revision	3	Processing version of data	ontime2	20103.107839048	Sum of GTIs [s]
			ontime3	20109.430839479	Sum of GTIs [s]
			ontime6	20109.266679481	Sum of GTIs [s]
			l1events	1088010	Number of level 1 events

2.1.4 Events

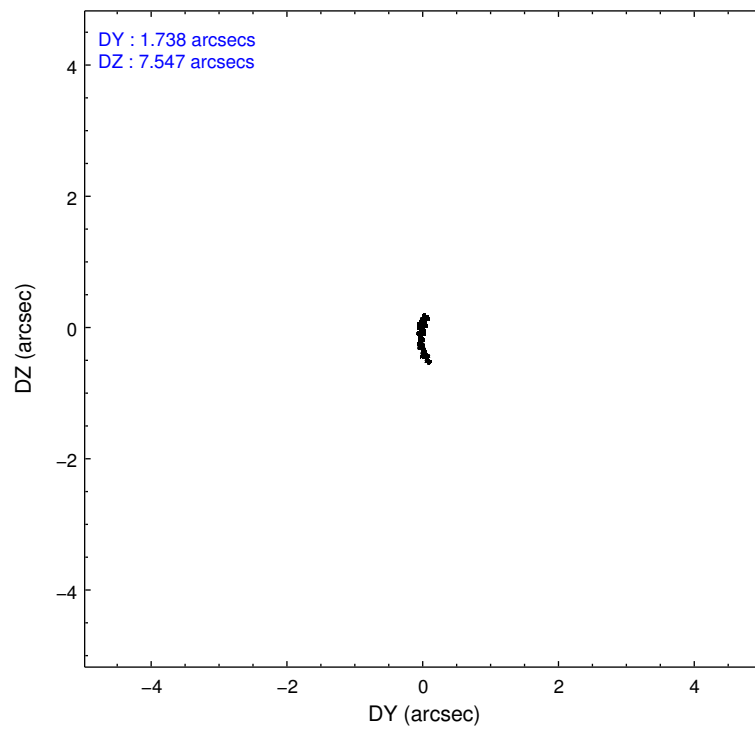
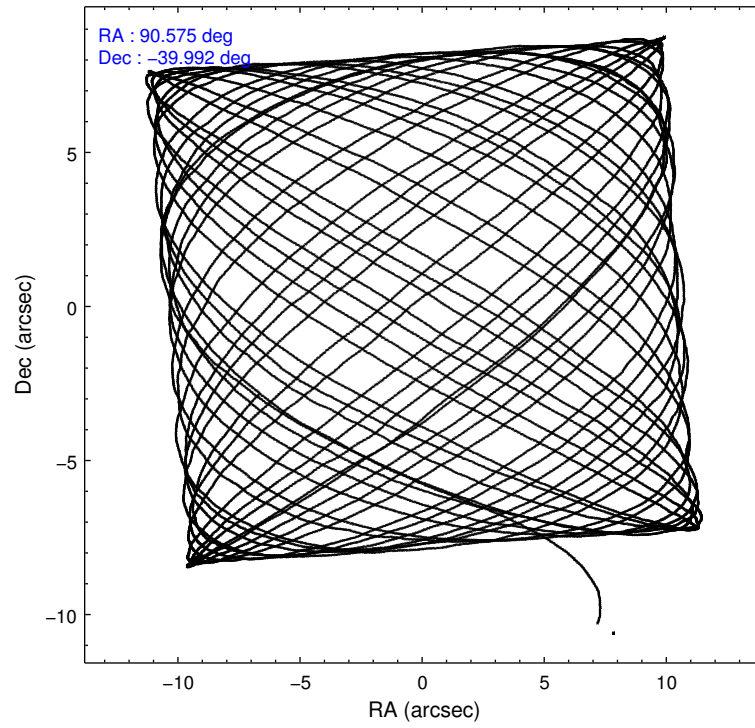
	ccd 0	ccd 1	ccd 2	ccd 3	ccd 6
level 1 events	175006	199296	256420	223215	234073
rejected events	140296	165993	216789	201221	207218
rejected %	80%	83%	84%	90%	88%

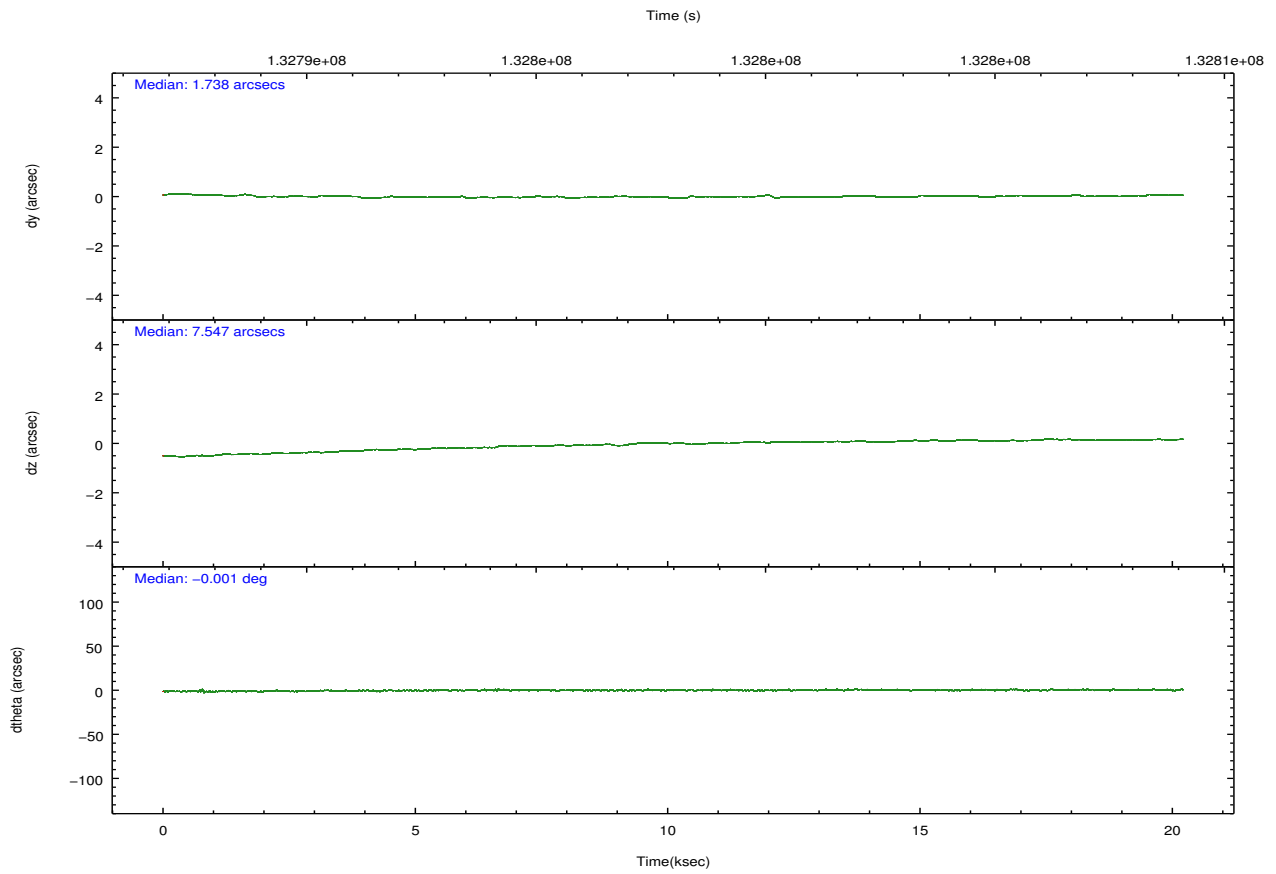
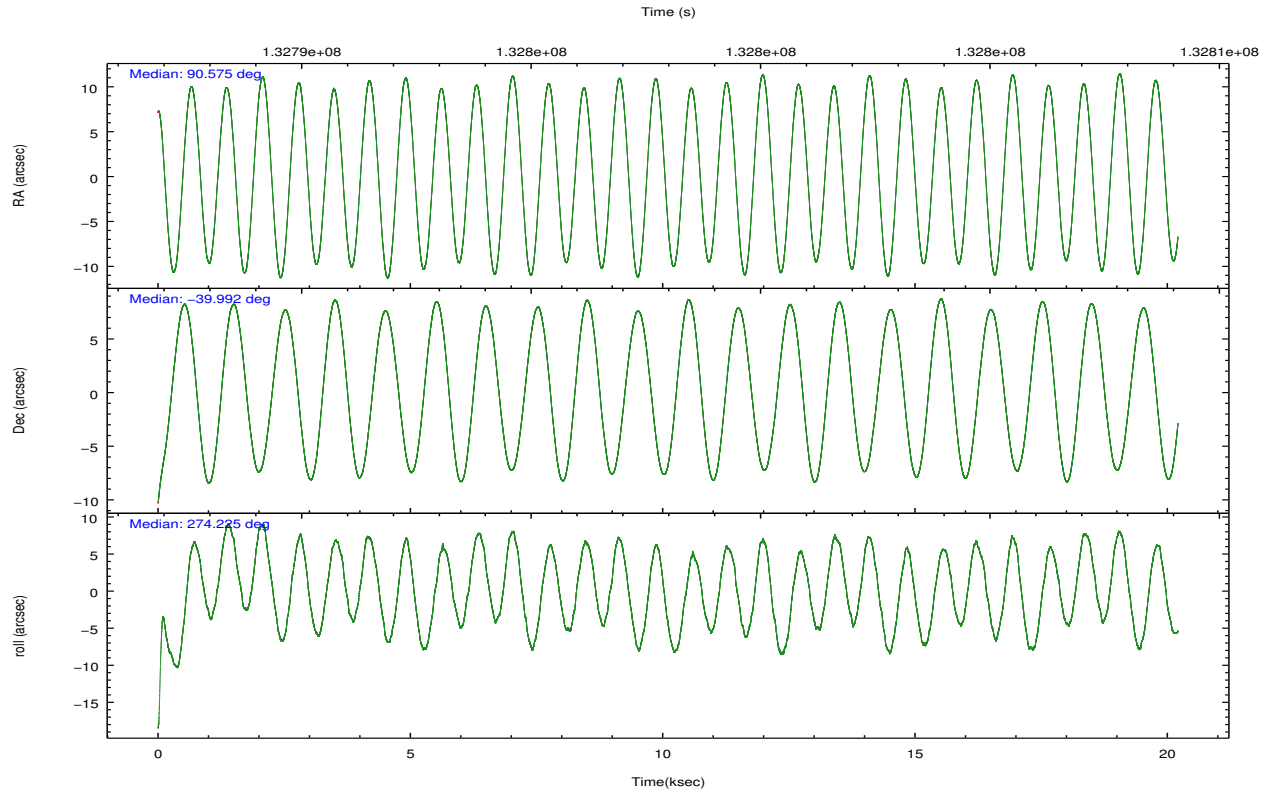
	ccd 0	ccd 1	ccd 2	ccd 3	ccd 6
grade 0 events	20043	18577	21234	12211	13625
	11%	9%	8%	5%	5%
grade 1 events	210	137	232	100	149
	0%	0%	0%	0%	0%
grade 2 events	8993	6844	10388	4371	8104
	5%	3%	4%	1%	3%
grade 3 events	1661	2059	1401	1580	1348
	0%	1%	0%	0%	0%
grade 4 events	1547	1931	3405	1578	1400
	0%	0%	1%	0%	0%
grade 5 events	3772	4109	3900	4139	4306
	2%	2%	1%	1%	1%
grade 6 events	2476	3904	3215	2263	2390
	1%	1%	1%	1%	1%
grade 7 events	136304	161735	212645	196973	202751
	77%	81%	82%	88%	86%

2.2 Compared Parameters

Parameter	Planned	Actual	Parameter	Planned	Actual
Instrument	ACIS	ACIS	Obspar format version number	7	7
Detector	ACIS-01236	ACIS-01236	Obspar file type	PREDICTED	ACTUAL
Grating	NONE	NONE	Obspar update status	NONE	UPDATED
Data mode	VFAINT	VFAINT	Number of optional ACIS chips dropped	0	0
Observation mode	POINTING	POINTING	On-chip summing requested	N	N
[deg] Pointing RA	90.555093	90.57527049461513	Subarray requested	NONE	NONE
[deg] Pointing Dec	-39.969151	-39.99178375601377	Alternating exposures requested	N	N
[deg] Pointing Roll	274.008621	274.2302587323234	[s] Primary exposure time	0.000000	3.1
[mm] SIM focus pos	-0.782348	-0.7809083437167272			
[mm] SIM defocus	0	0.001439871863259334			
[mm] SIM translation stage pos	-227.592463	-227.5933067819097			
[mm] SIM translation stage offset	-6	-5.999146221020027			
[s] Observation start time (MET)	132788090.184000	132787122.97634			
Observation start date	2002-03-17T21:33:46	2002-03-17T21:18:42			
[s] Observation end time (MET)	132808090.184000	132809196.86473			
Observation end date	2002-03-18T03:07:06	2002-03-18T03:26:36			
Read mode	TIMED	TIMED			

2.3 Aspect



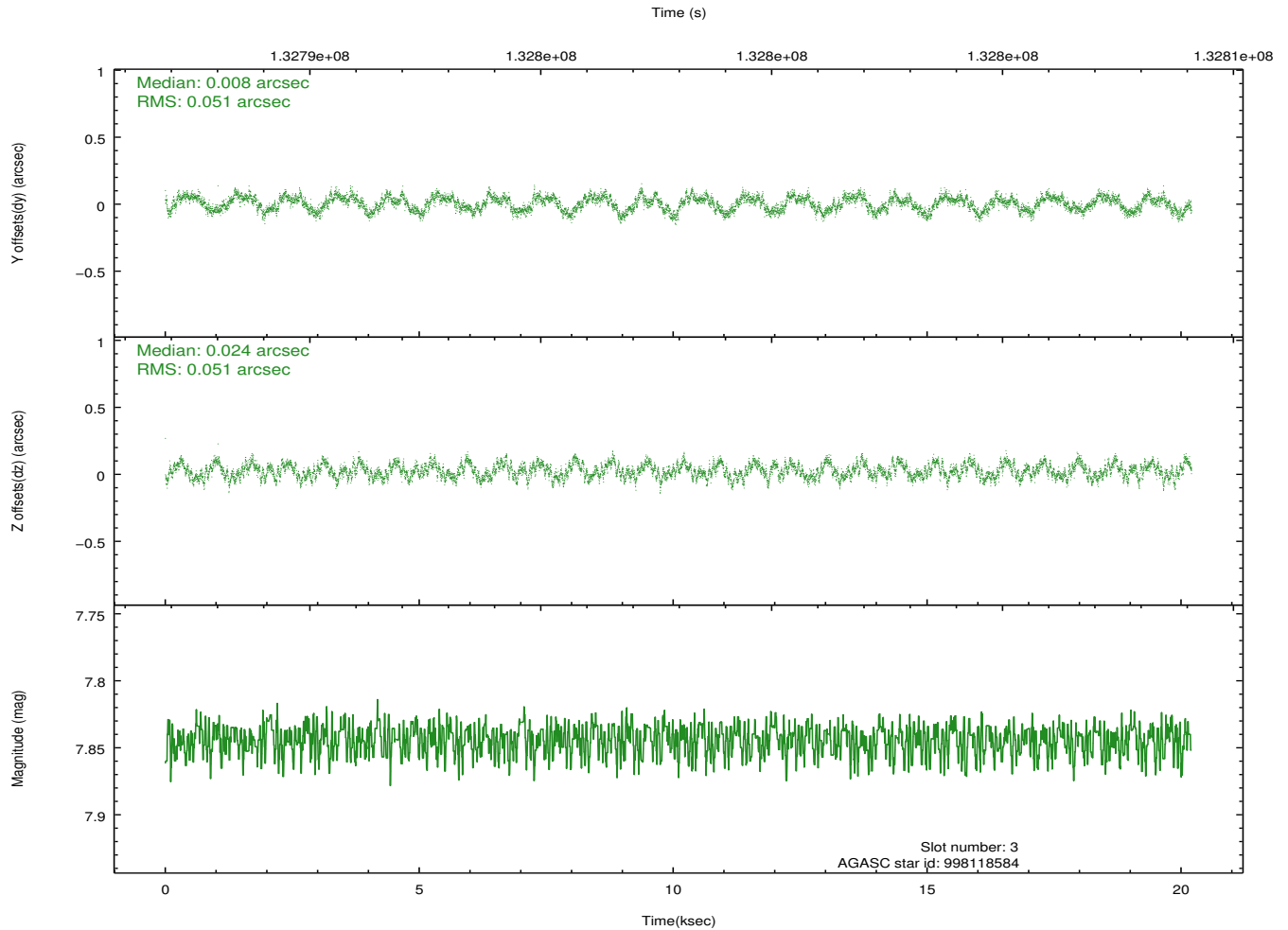
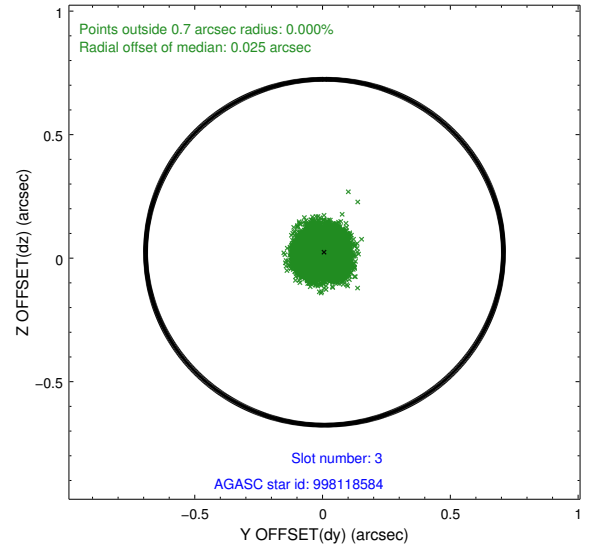
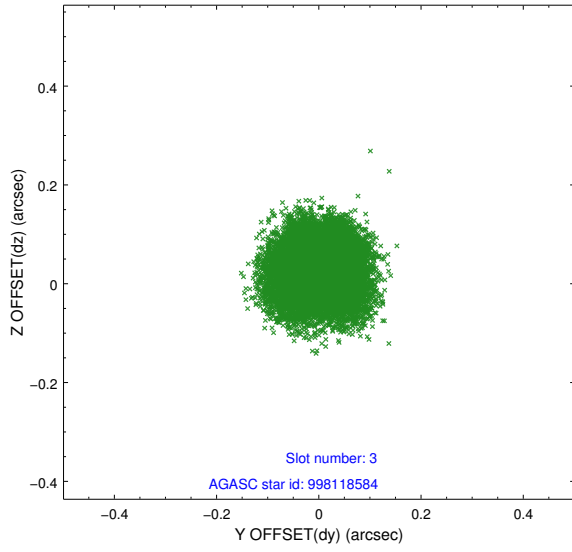


Slot Statistics

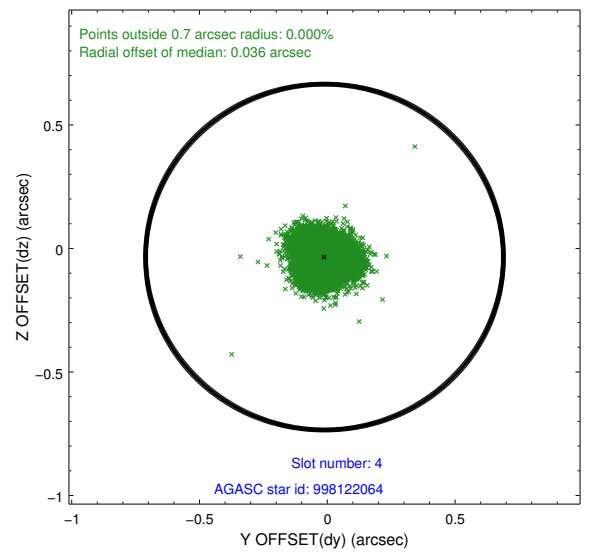
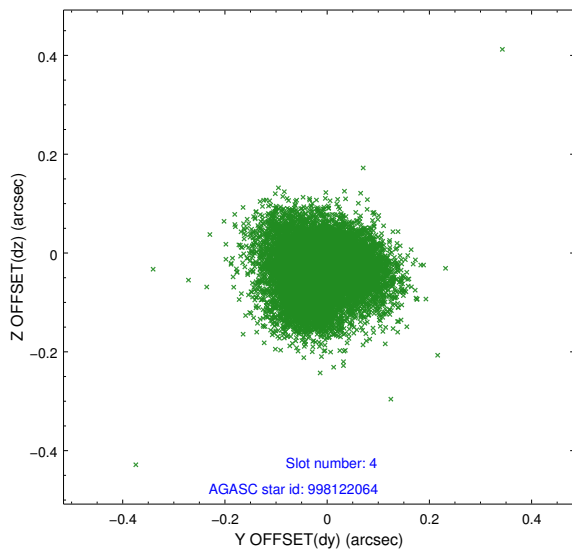
slot	status	id	mag	n_pts	med_dy	med_dz	dr1	dr2	ra	dec	mean_y	mean_z
0	FID	ACIS-I-1	7.24	4929	0.061	-0.038	0.008	0.014	0.000000	0.000000	938.01	-954.07
1	FID	ACIS-I-5	7.23	4929	-0.129	0.085	0.007	0.013	0.000000	0.000000	-1810.14	943.49
2	FID	ACIS-I-6	7.25	4929	-0.022	0.025	0.009	0.014	0.000000	0.000000	403.33	1588.10
3	GUIDE	998118584	7.84	9857	0.008	0.024	0.079	0.116	91.028900	-39.836263	-381.71	1340.01
4	GUIDE	998122064	8.85	9852	-0.011	-0.035	0.087	0.135	90.154340	-40.368326	1359.86	-1196.65
5	GUIDE	998119120	9.12	9855	0.068	0.040	0.208	0.276	90.414762	-40.136836	576.33	-427.25
6	GUIDE	998115240	9.78	9852	-0.025	-0.019	0.098	0.158	90.090736	-39.523214	-1687.53	-1174.32
7	GUIDE	997593480	9.32	9856	-0.046	-0.001	0.089	0.143	90.607549	-39.310496	-2354.74	311.44

2.4 Star Slots

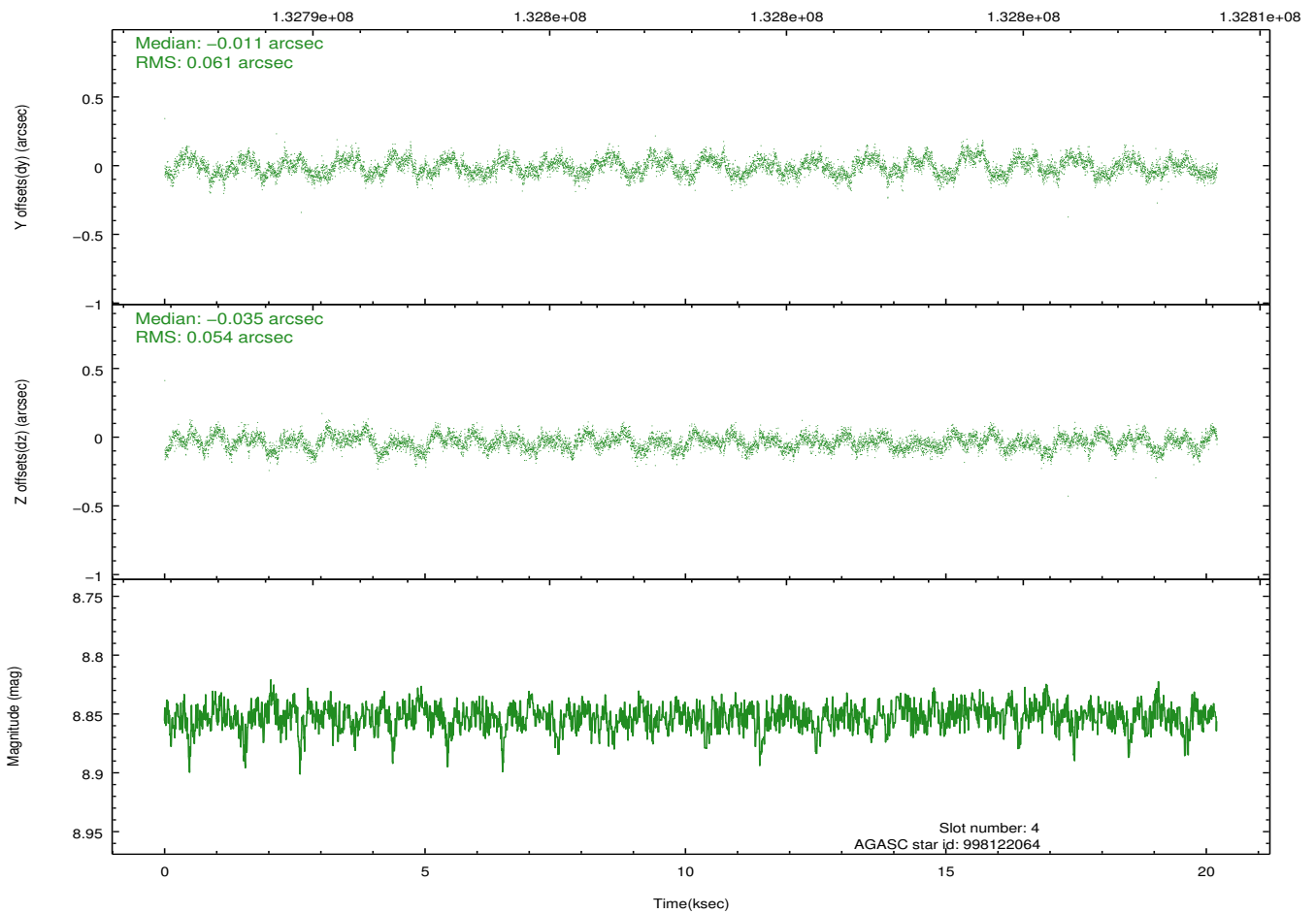
2.4.1 Slot 3



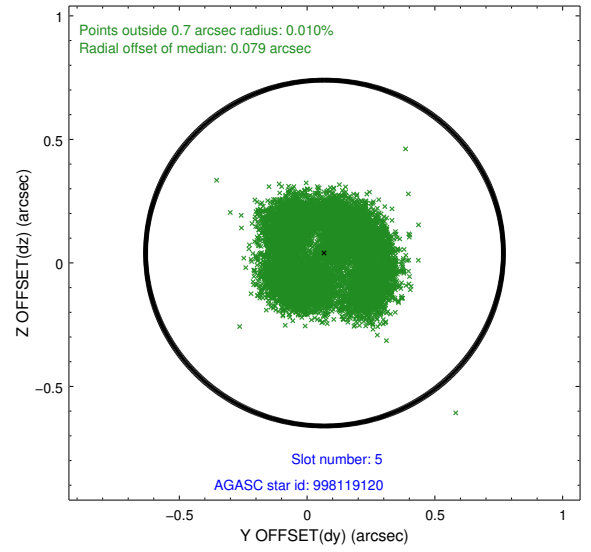
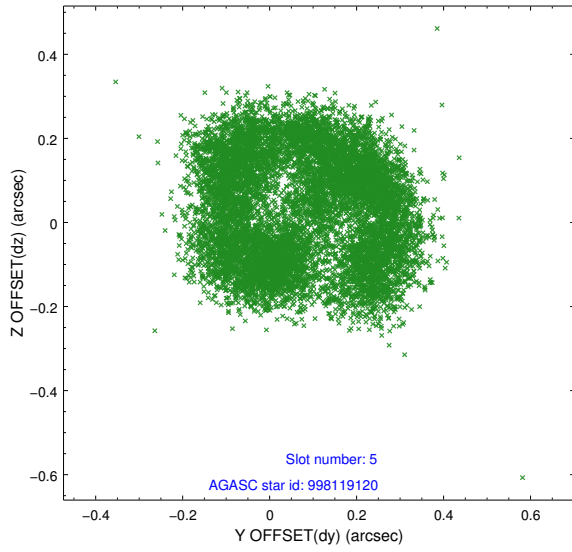
2.4.2 Slot 4



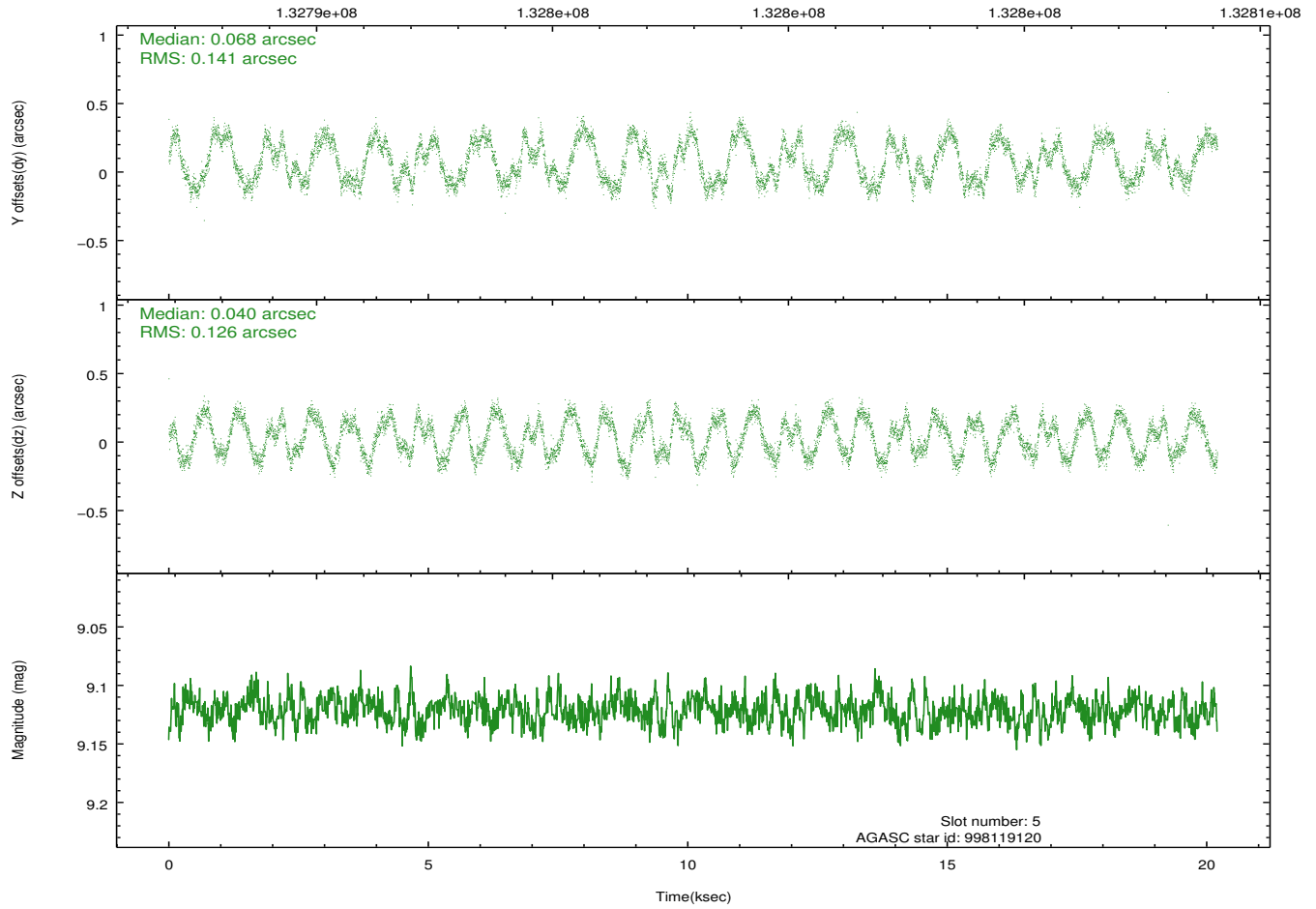
Time (s)



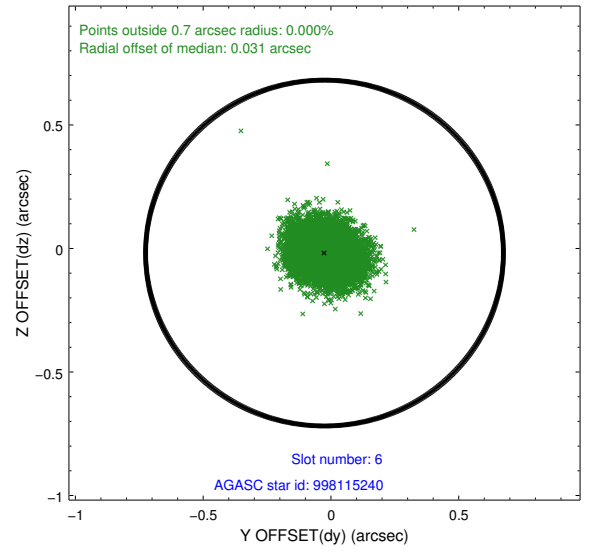
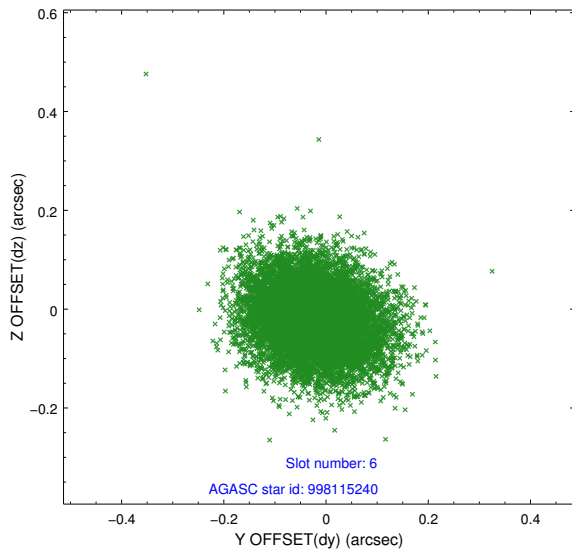
2.4.3 Slot 5



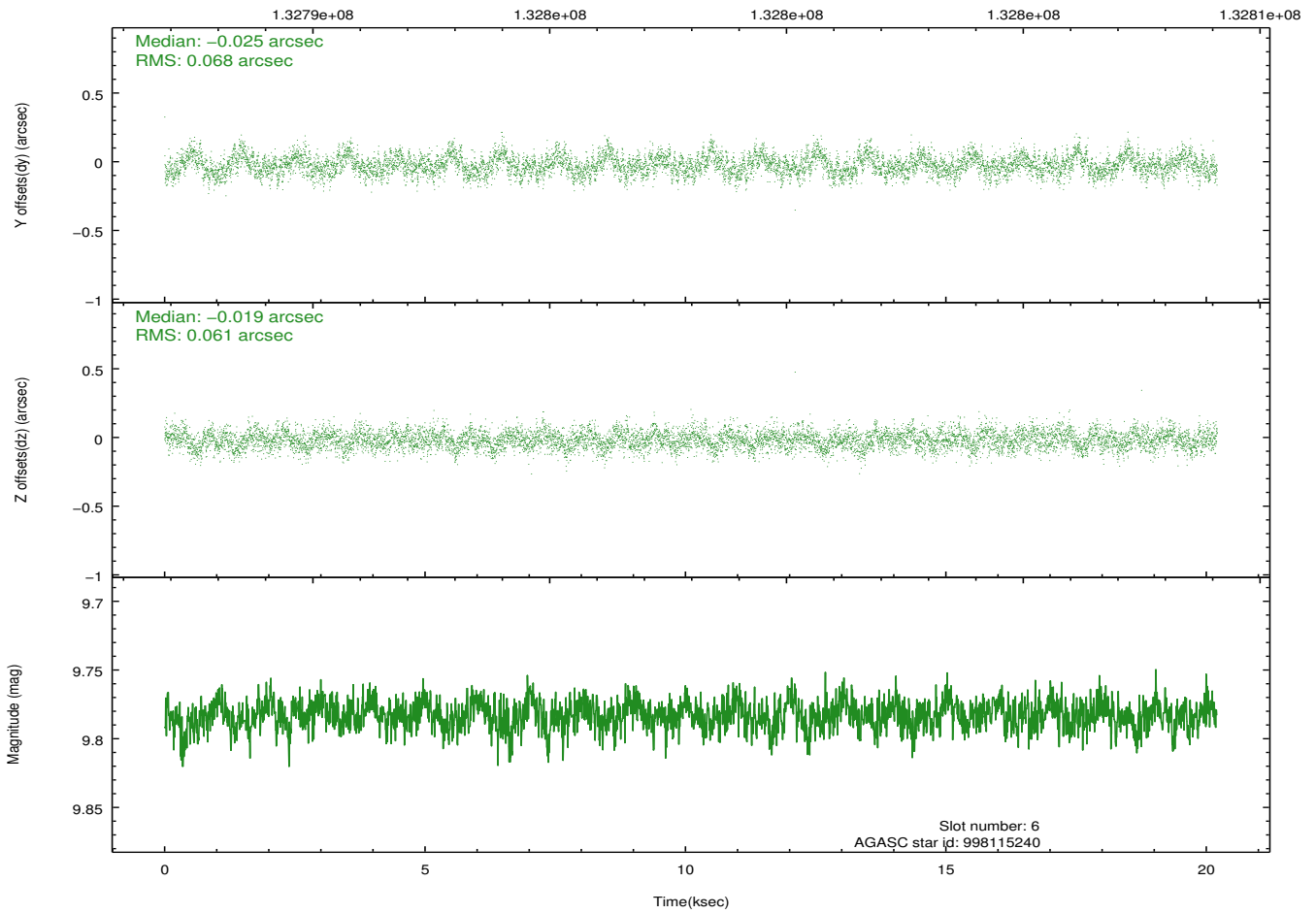
Time (s)



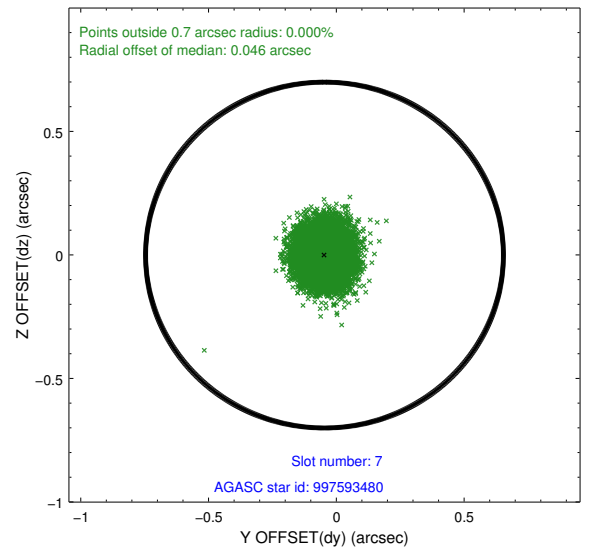
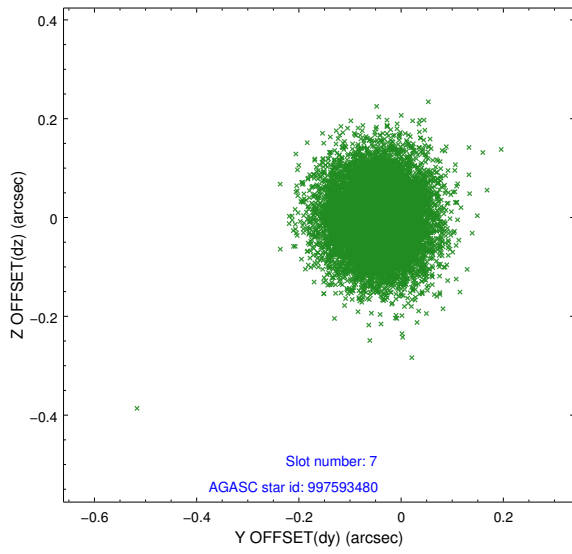
2.4.4 Slot 6



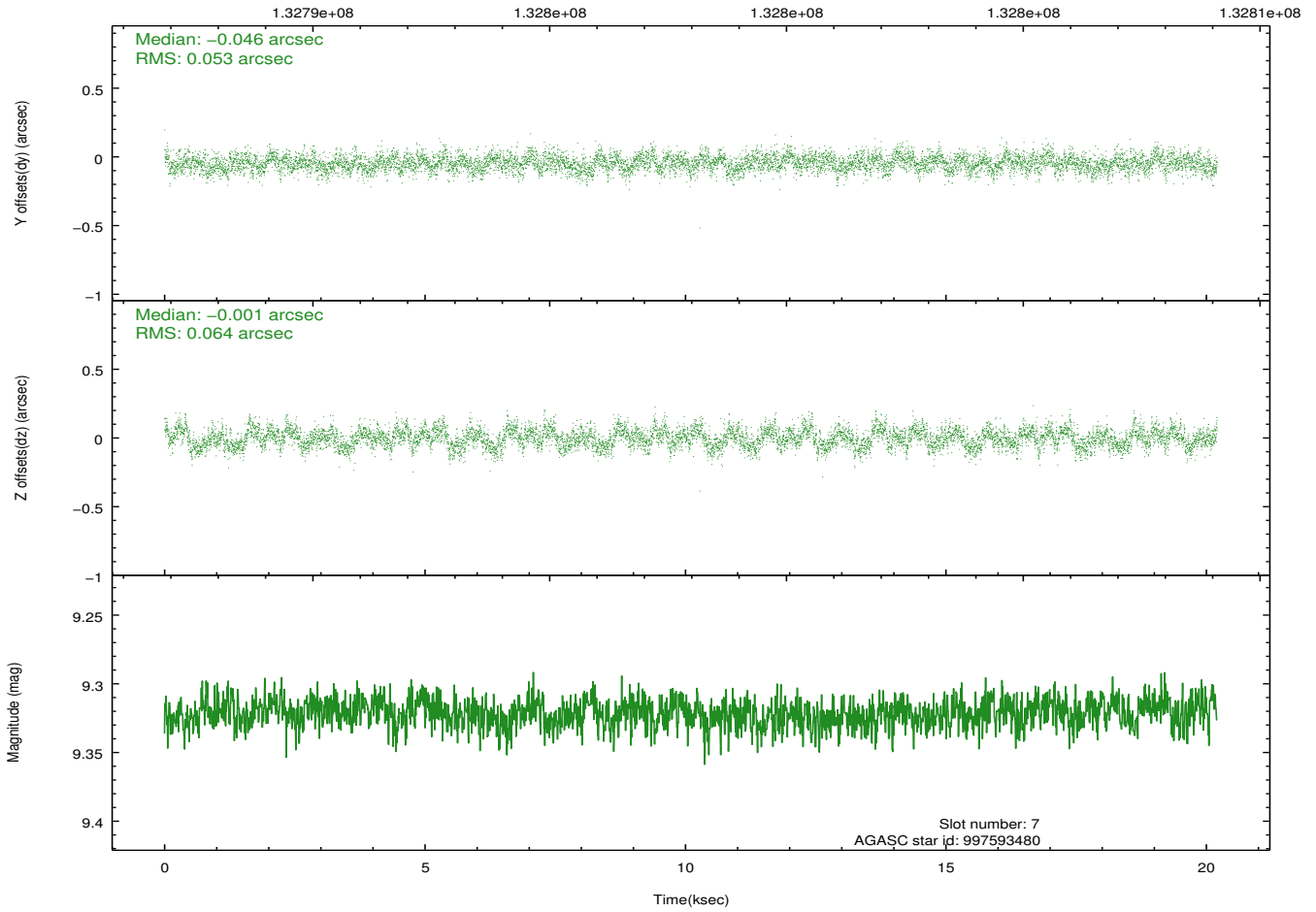
Time (s)



2.4.5 Slot 7

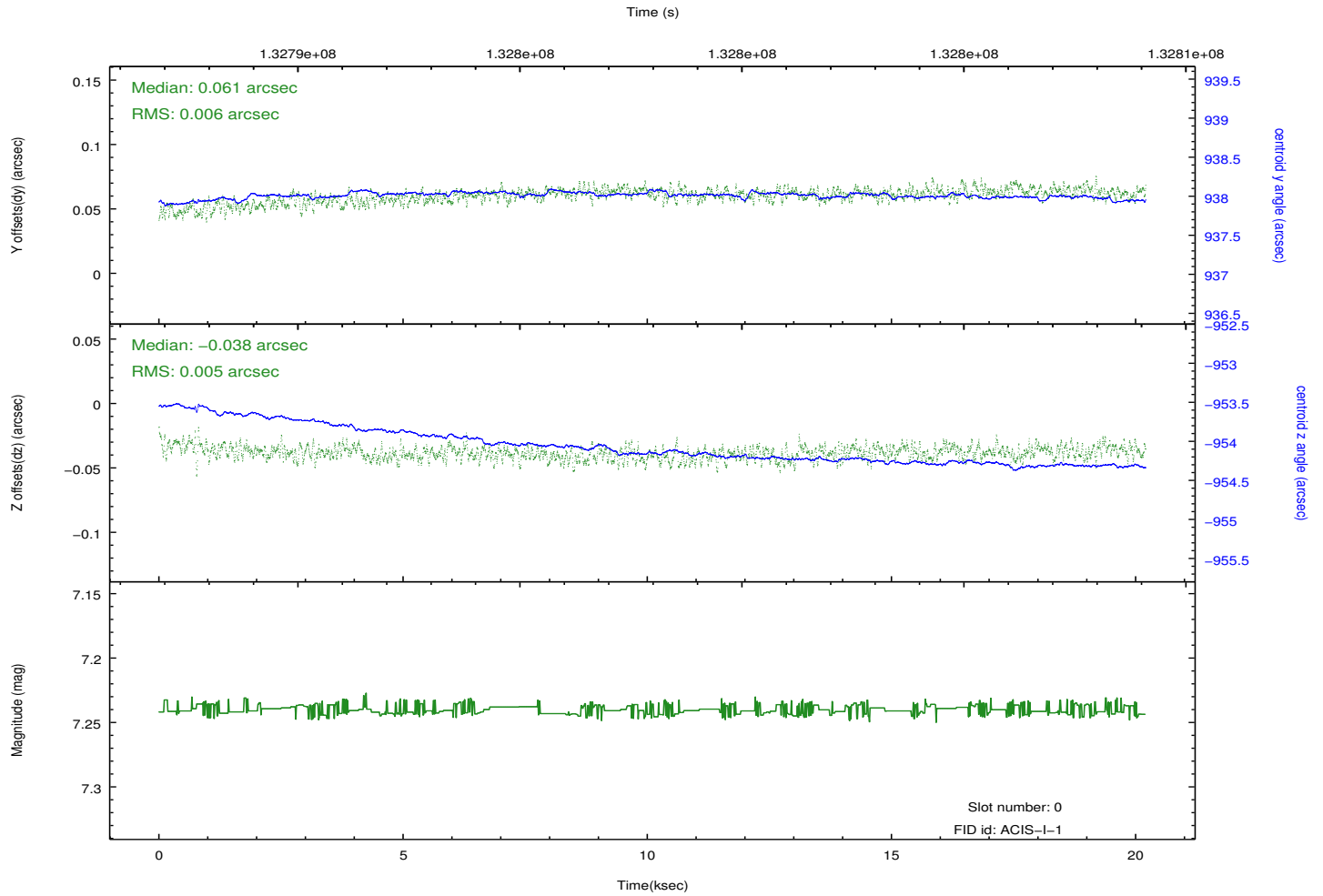
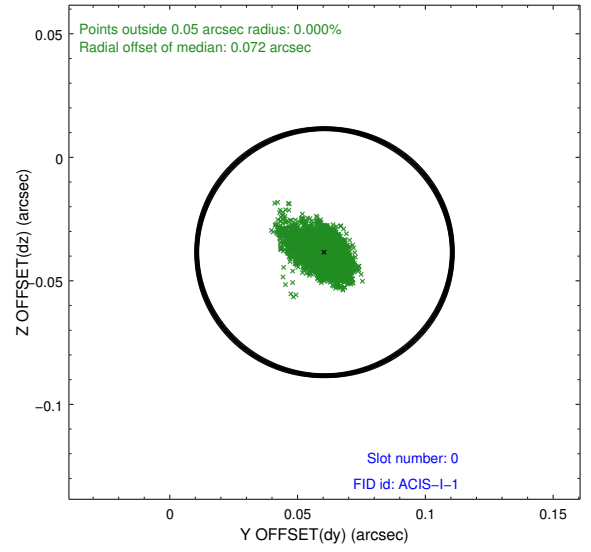
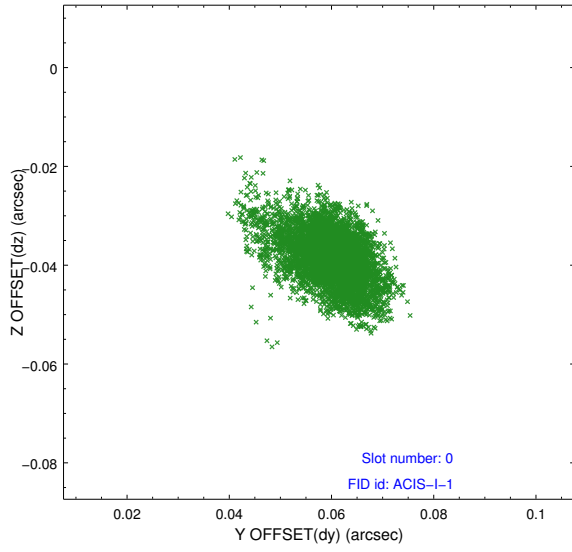


Time (s)

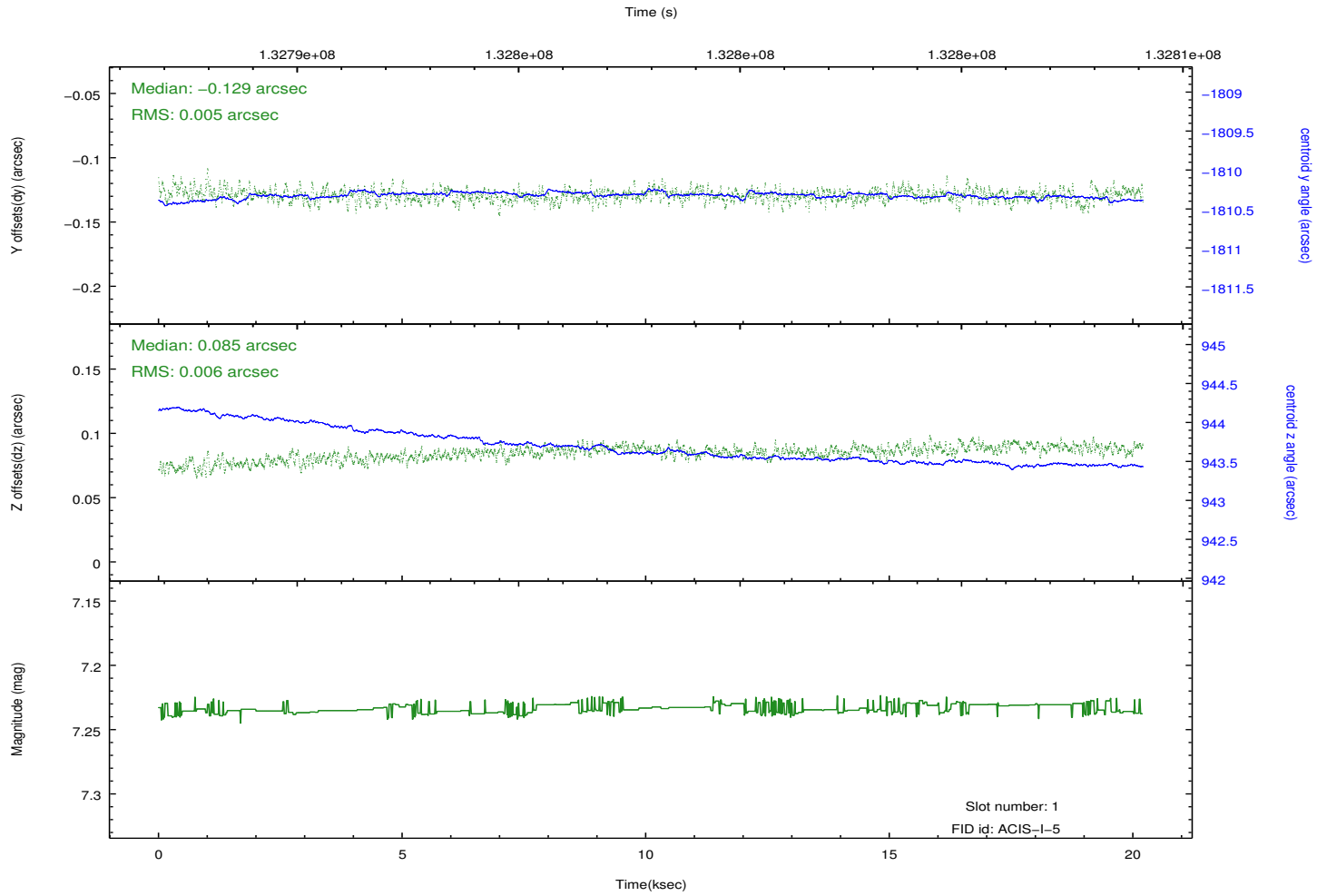
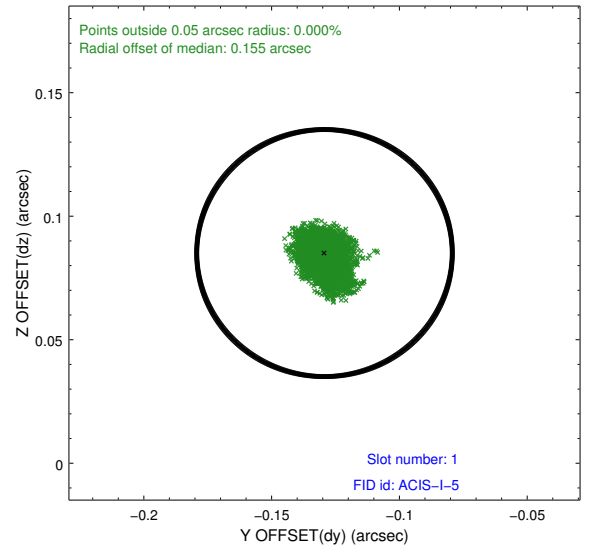
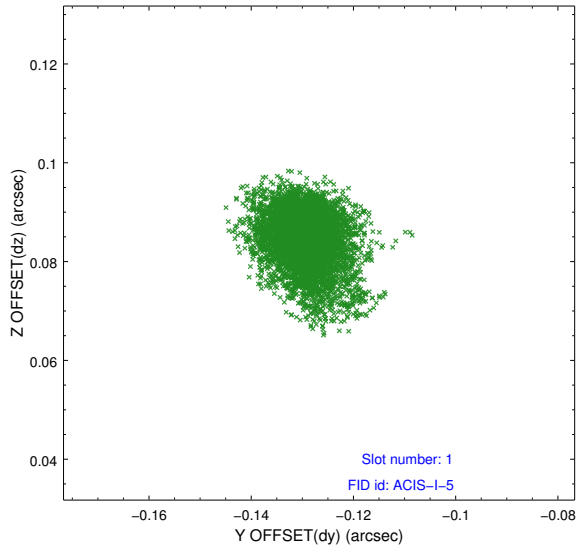


2.5 FID Slots

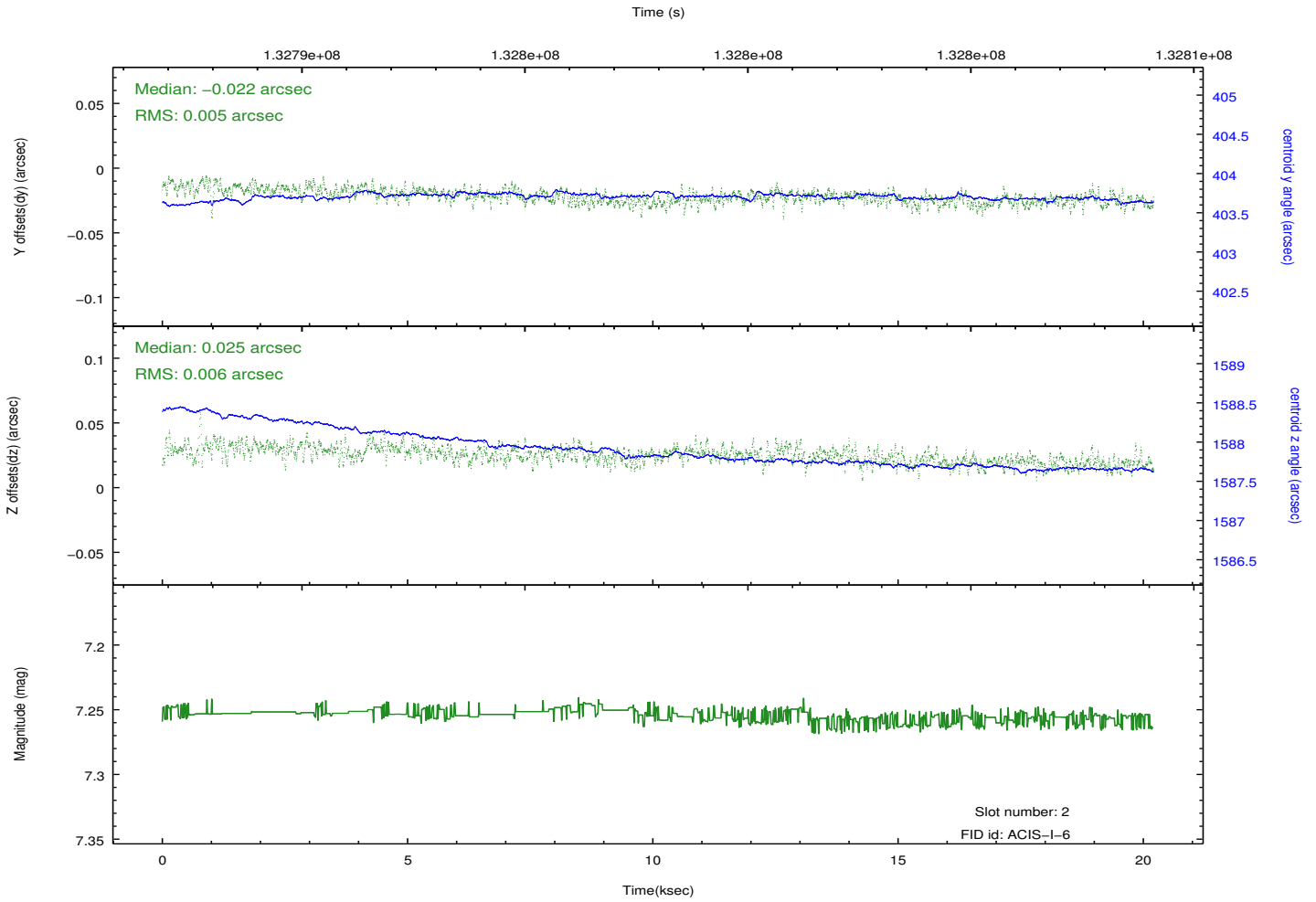
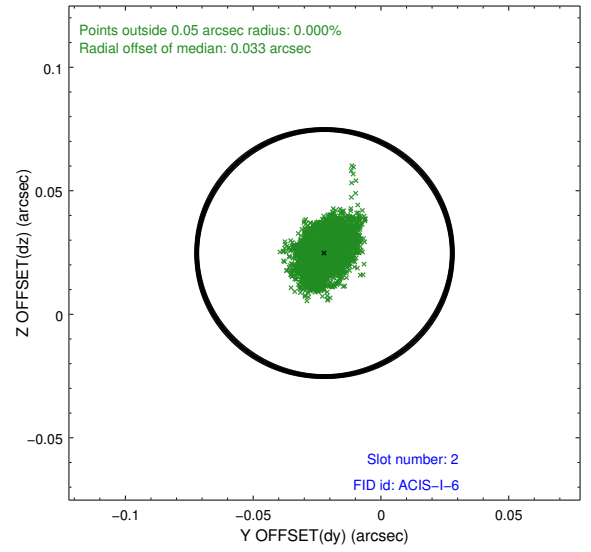
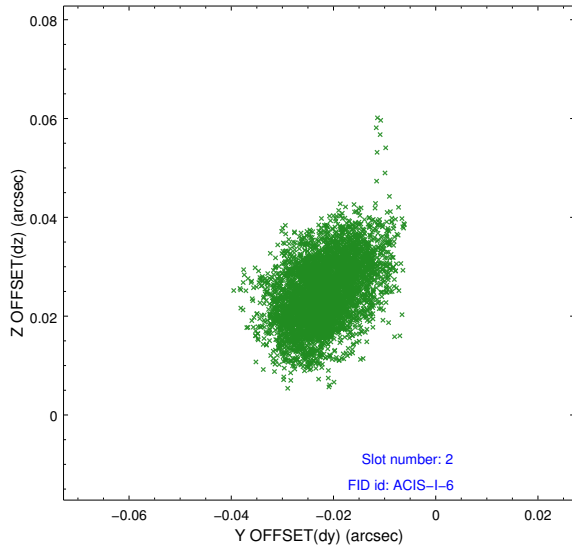
2.5.1 Slot 0



2.5.2 Slot 1



2.5.3 Slot 2



A Summary

A.1 Status

V&V Scientist	Beth Sundheim
V&V Date (YYYY-MM-DD)	2012.10.09
V&V Edition	1
V&V Disposition and Status	OK
V&V Charge Time	20.109

A.2 Comments