

V&V Reference Report

L2 ASCDS Version : 8.4.5

Observation 3580 - L2 Version 3
Chandra X-Ray Center

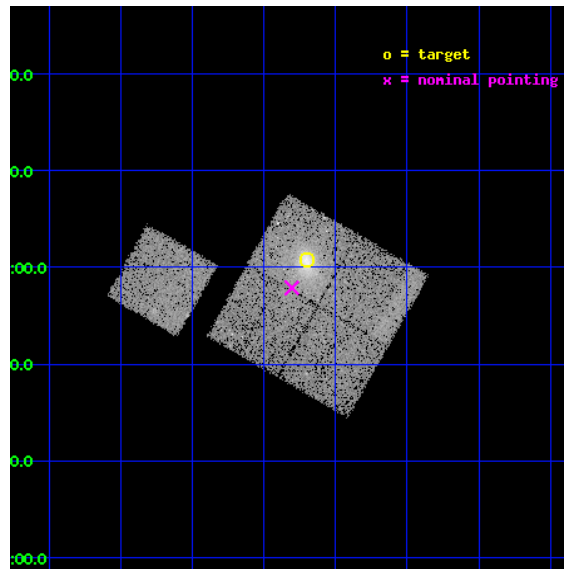
L2 Processing Date : Nov 8 2012

Contents

1	Front	2
2	OBI	3
2.1	OBI	3
2.1.1	Images	3
2.1.2	Bias	3
2.1.3	Parameters	4
2.1.4	Events	4
2.2	Compared Parameters	5
2.3	Aspect	6
2.4	Star Slots	9
2.4.1	Slot 3	9
2.4.2	Slot 4	10
2.4.3	Slot 5	11
2.4.4	Slot 6	12
2.4.5	Slot 7	13
2.5	FID Slots	14
2.5.1	Slot 0	14
2.5.2	Slot 1	15
2.5.3	Slot 2	16
A	Summary	17
A.1	Status	17
A.2	Comments	17

1 Front

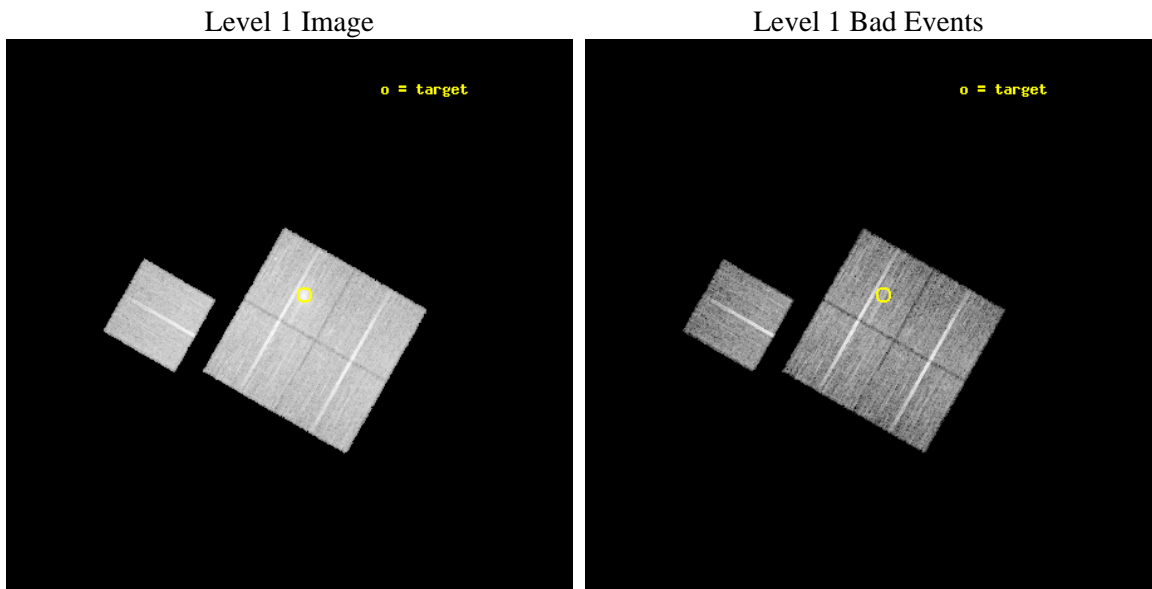
seq_num	800301	Sequence number
obs_id	3580	Observation id
title	X-RAY/SZ DETERMINATION OF COSMOLOGICAL PARAMETERS	Proposal title
observer	DR. LEON VANSPEYBROECK	Principal investigator
object	A267	Source name
dtycycle	0	
cycle	P	events from which exps? Prim/Second/Both
ra_targ	28.175833	Observer's specified target RA [deg]
dec_targ	1.013	Observer's specified target Dec [deg]
ra_nom	28.201081322363	Nominal RA [deg]
dec_nom	0.96488625183489	Nominal Dec [deg]
roll_nom	299.76098309715	Nominal Roll [deg]
revision	3	Processing version of data
ontime	20143.799961239	Sum of GTIs [s]
livetime	19880.606385096	Livetime [s]
ontime0	20143.799961239	Sum of GTIs [s]
ontime1	20143.799961239	Sum of GTIs [s]
ontime2	20143.799961239	Sum of GTIs [s]
ontime3	20143.799961239	Sum of GTIs [s]
ontime6	20143.799961239	Sum of GTIs [s]
l2events	60405	Number of level 2 events



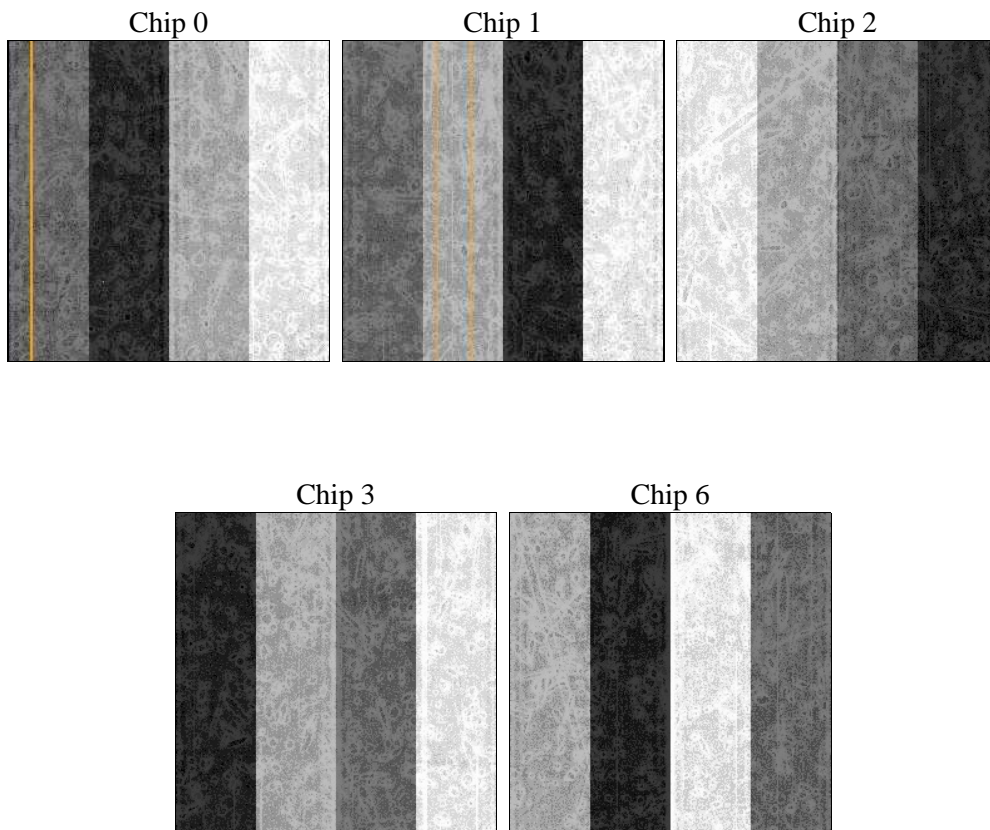
2 OBI

2.1 OBI

2.1.1 Images



2.1.2 Bias



2.1.3 Parameters

obi_num	0	Obi number	sched_exp_time	20000.000000	[s] Scheduled observation exposure time
ascdsver	8.4.5	Processing system revision	ontime	20143.799961239	Sum of GTIs [s]
caldbver	4.5.2	 	ontime0	20143.799961239	Sum of GTIs [s]
date	2012-11-08T07:58:50	Date and time of file creation	ontime1	20143.799961239	Sum of GTIs [s]
revision	3	Processing version of data	ontime2	20143.799961239	Sum of GTIs [s]
			ontime3	20143.799961239	Sum of GTIs [s]
			ontime6	20143.799961239	Sum of GTIs [s]
			l1events	547051	Number of level 1 events

2.1.4 Events

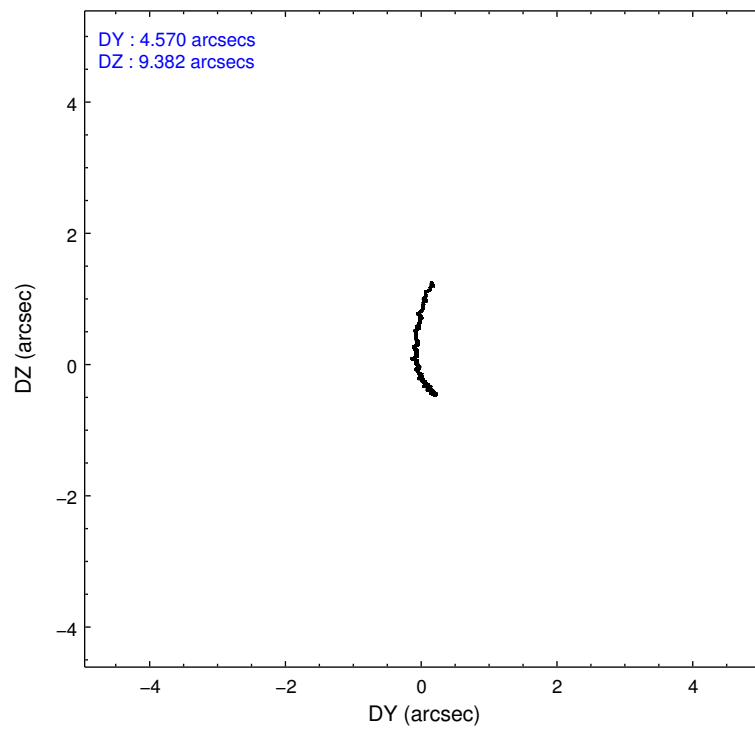
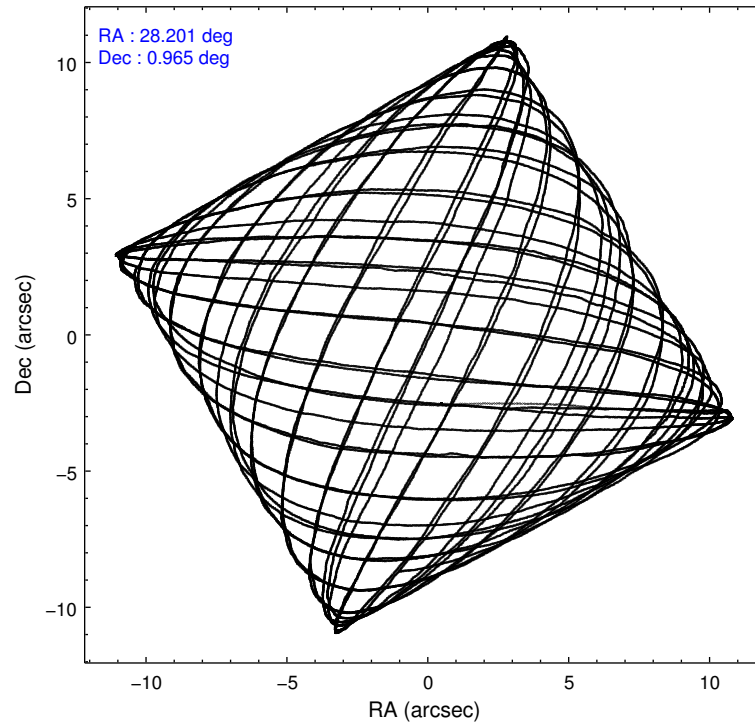
	ccd 0	ccd 1	ccd 2	ccd 3	ccd 6
level 1 events	99977	102085	115678	121705	107606
rejected events	88914	89080	103964	99388	95320
rejected %	88%	87%	89%	81%	88%

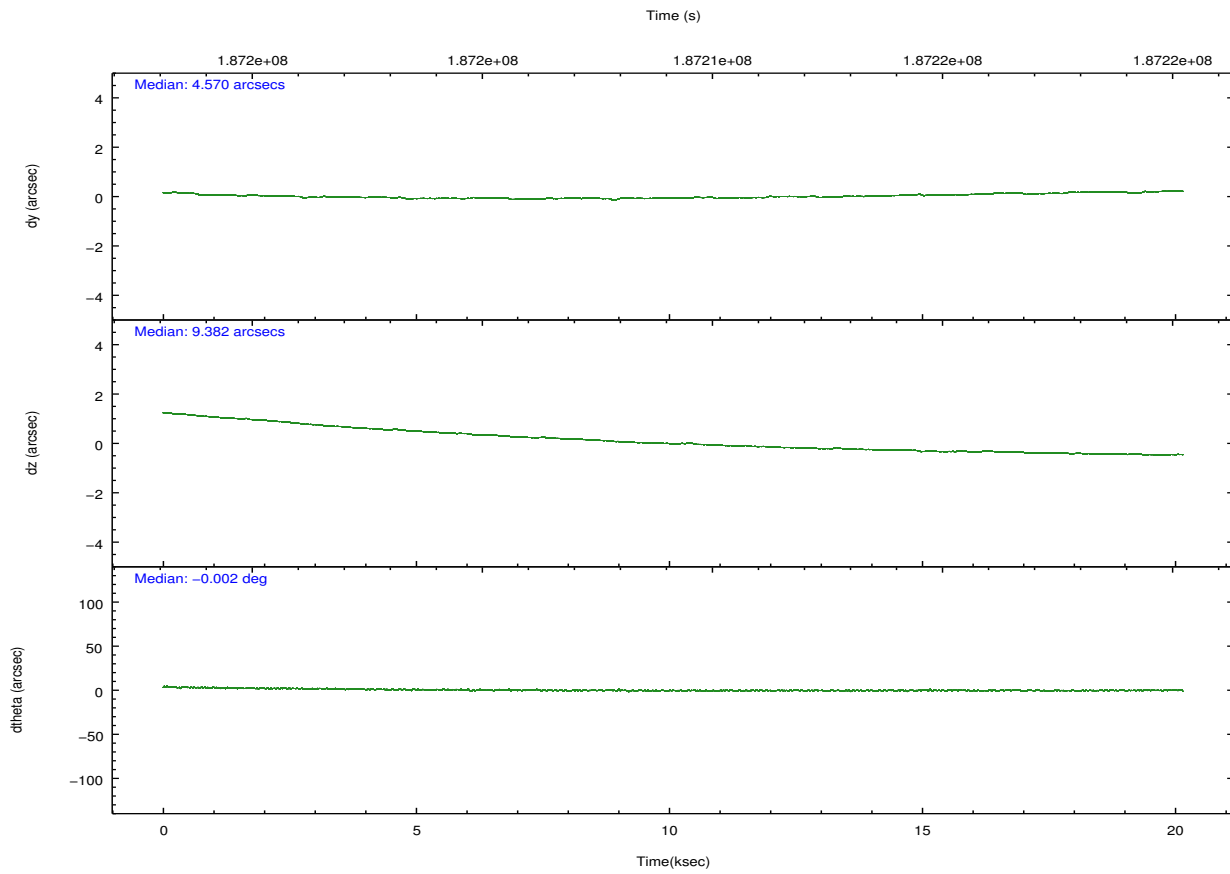
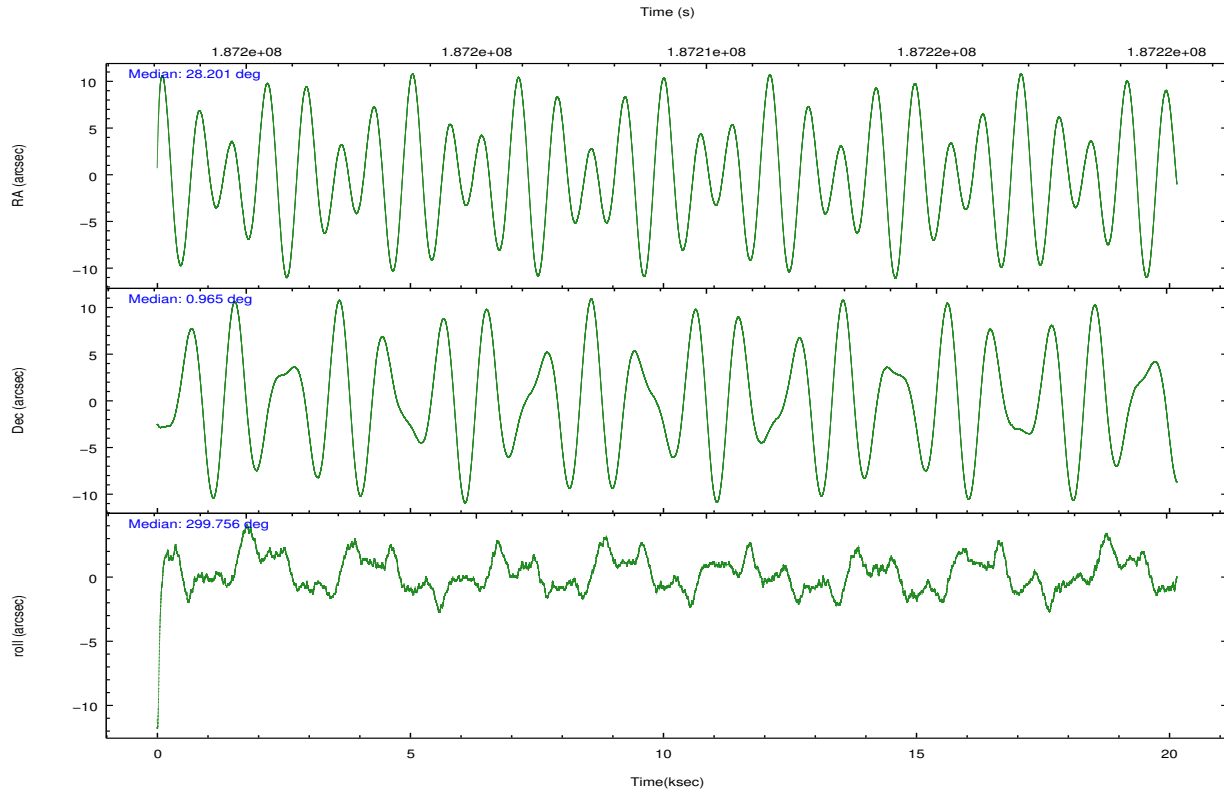
	ccd 0	ccd 1	ccd 2	ccd 3	ccd 6
grade 0 events	4953	5897	5451	14517	5893
	4%	5%	4%	11%	5%
grade 1 events	48	45	72	90	54
	0%	0%	0%	0%	0%
grade 2 events	2580	3029	2791	3532	2567
	2%	2%	2%	2%	2%
grade 3 events	1309	1396	1283	1616	1318
	1%	1%	1%	1%	1%
grade 4 events	1248	1315	1327	1523	1332
	1%	1%	1%	1%	1%
grade 5 events	3846	4034	3583	4274	4398
	3%	3%	3%	3%	4%
grade 6 events	2091	2641	2029	2359	2455
	2%	2%	1%	1%	2%
grade 7 events	83902	83728	99142	93794	89589
	83%	82%	85%	77%	83%

2.2 Compared Parameters

Parameter	Planned	Actual	Parameter	Planned	Actual
Instrument	ACIS	ACIS	Obspar format version number	7	7
Detector	ACIS-01236	ACIS-01236	Obspar file type	PREDICTED	ACTUAL
Grating	NONE	NONE	Obspar update status	NONE	UPDATED
Data mode	VFAINT	VFAINT	Number of optional ACIS chips dropped	0	0
Observation mode	POINTING	POINTING	On-chip summing requested	N	N
[deg] Pointing RA	28.177335	28.2010813223629	Subarray requested	NONE	NONE
[deg] Pointing Dec	0.978593	0.9648862518348947	Alternating exposures requested	N	N
[deg] Pointing Roll	299.552710	299.7609830971516	[s] Primary exposure time	0.000000	3.1
[mm] SIM focus pos	-0.782348	-0.7809083437167272			
[mm] SIM defocus	0	0.001439871863259334			
[mm] SIM translation stage pos	-225.840463	-225.8433433320239			
[mm] SIM translation stage offset	-7.752	-7.749109670905796			
[s] Observation start time (MET)	187199217.184000	187197093.14398			
Observation start date	2003-12-07T15:45:53	2003-12-07T15:11:33			
[s] Observation end time (MET)	187219217.184000	187220336.04499			
Observation end date	2003-12-07T21:19:13	2003-12-07T21:38:56			
Read mode	TIMED	TIMED			

2.3 Aspect



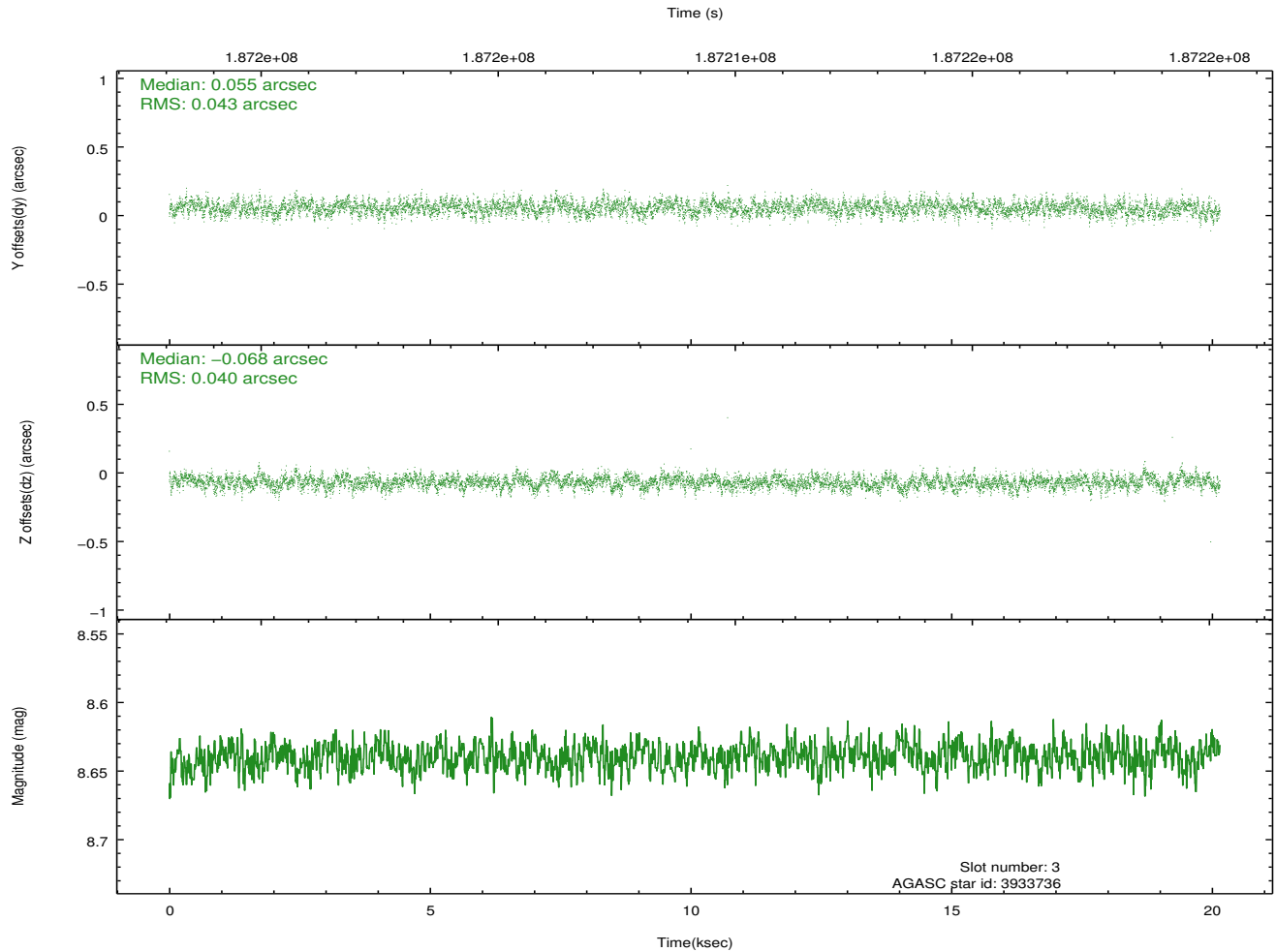
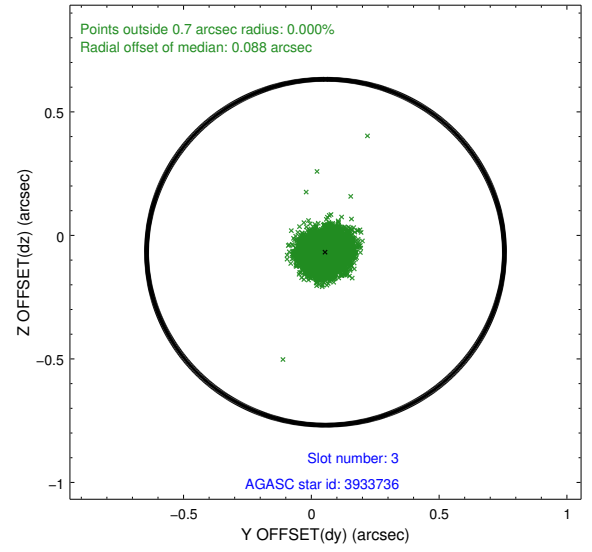
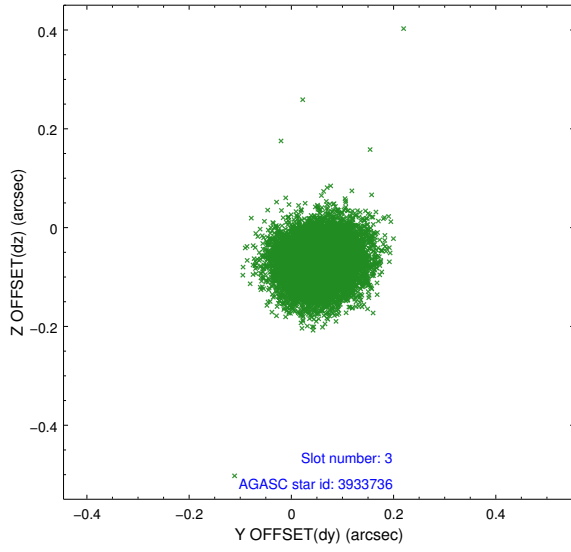


Slot Statistics

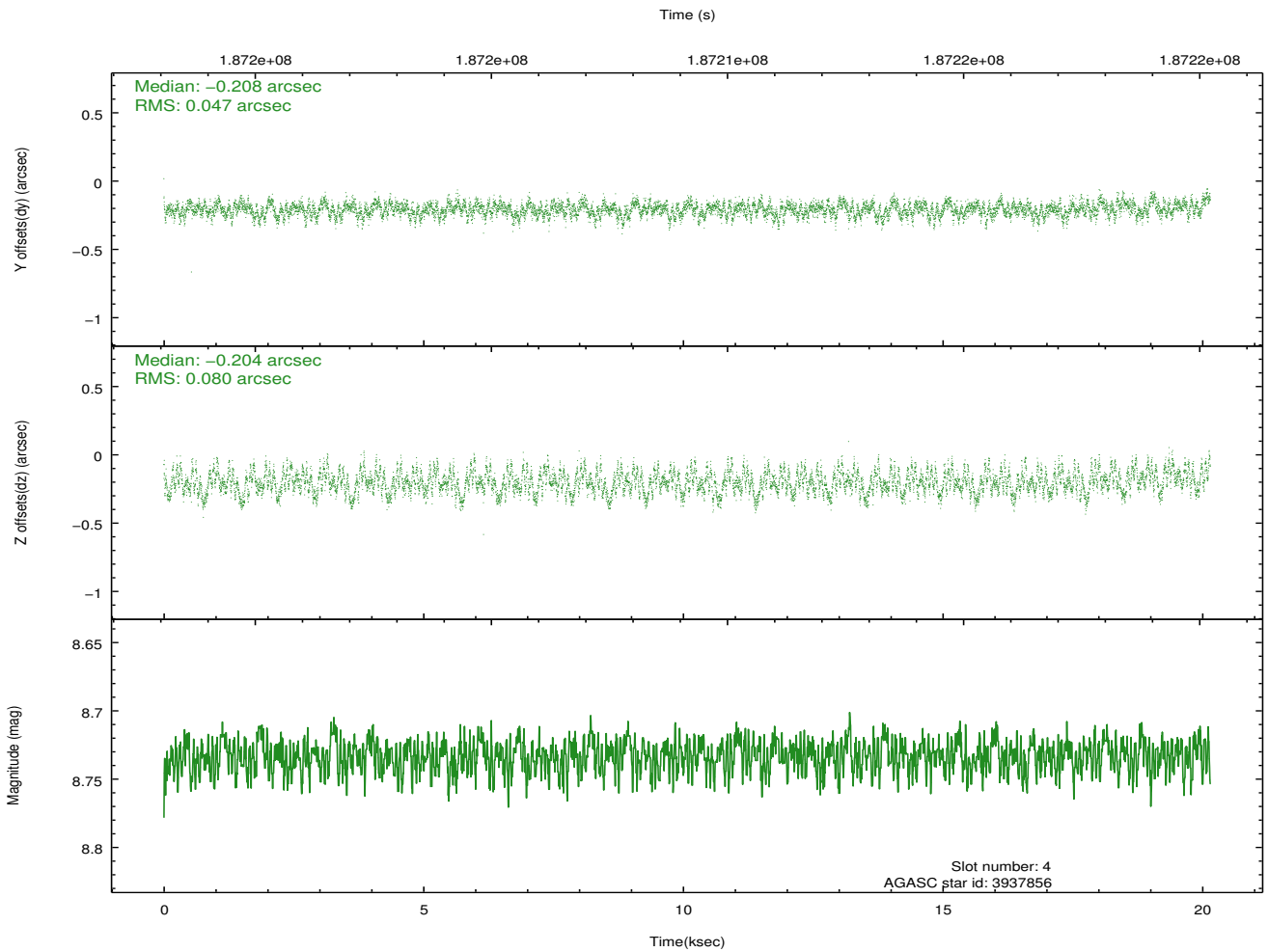
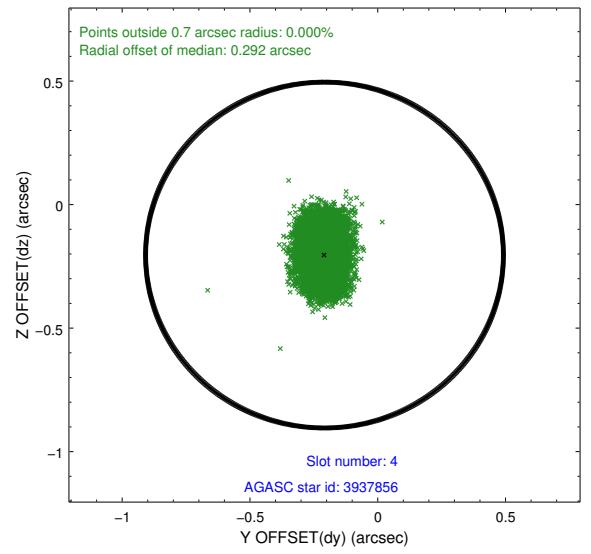
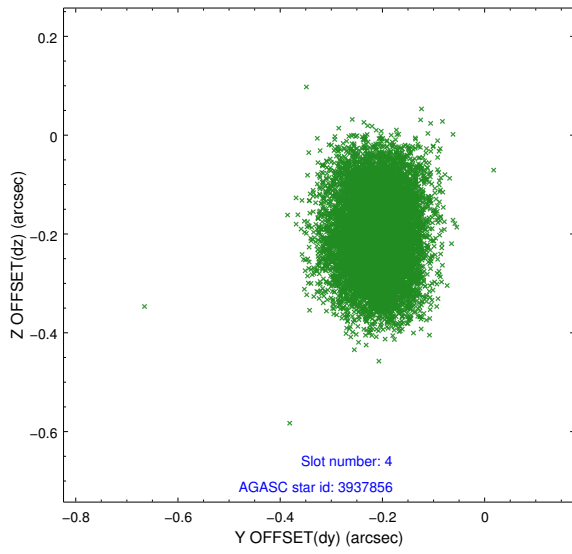
slot	status	id	mag	n_pts	med_dy	med_dz	dr1	dr2	ra	dec	mean_y	mean_z
0	FID	ACIS-I-1	7.23	4915	0.079	-0.065	0.013	0.032	0.000000	0.000000	935.09	-992.12
1	FID	ACIS-I-5	7.22	4916	-0.244	0.067	0.010	0.022	0.000000	0.000000	-1813.23	905.39
2	FID	ACIS-I-6	7.24	4916	0.072	0.069	0.011	0.020	0.000000	0.000000	400.43	1550.10
3	GUIDE	3933736	8.64	9828	0.055	-0.068	0.063	0.101	28.335603	0.387418	2132.63	-553.88
4	GUIDE	3937856	8.73	9828	-0.208	-0.204	0.099	0.160	27.502239	0.986318	-1222.56	-2100.29
5	GUIDE	3932200	9.32	9827	0.077	0.048	0.086	0.139	28.826564	0.608712	2310.86	1376.51
6	GUIDE	3939408	9.59	9819	-0.141	-0.044	0.140	0.229	28.595614	1.577682	-1133.87	2373.37
7	GUIDE	3939256	9.93	9823	0.218	0.268	0.148	0.228	28.955841	0.906301	1608.37	2310.32

2.4 Star Slots

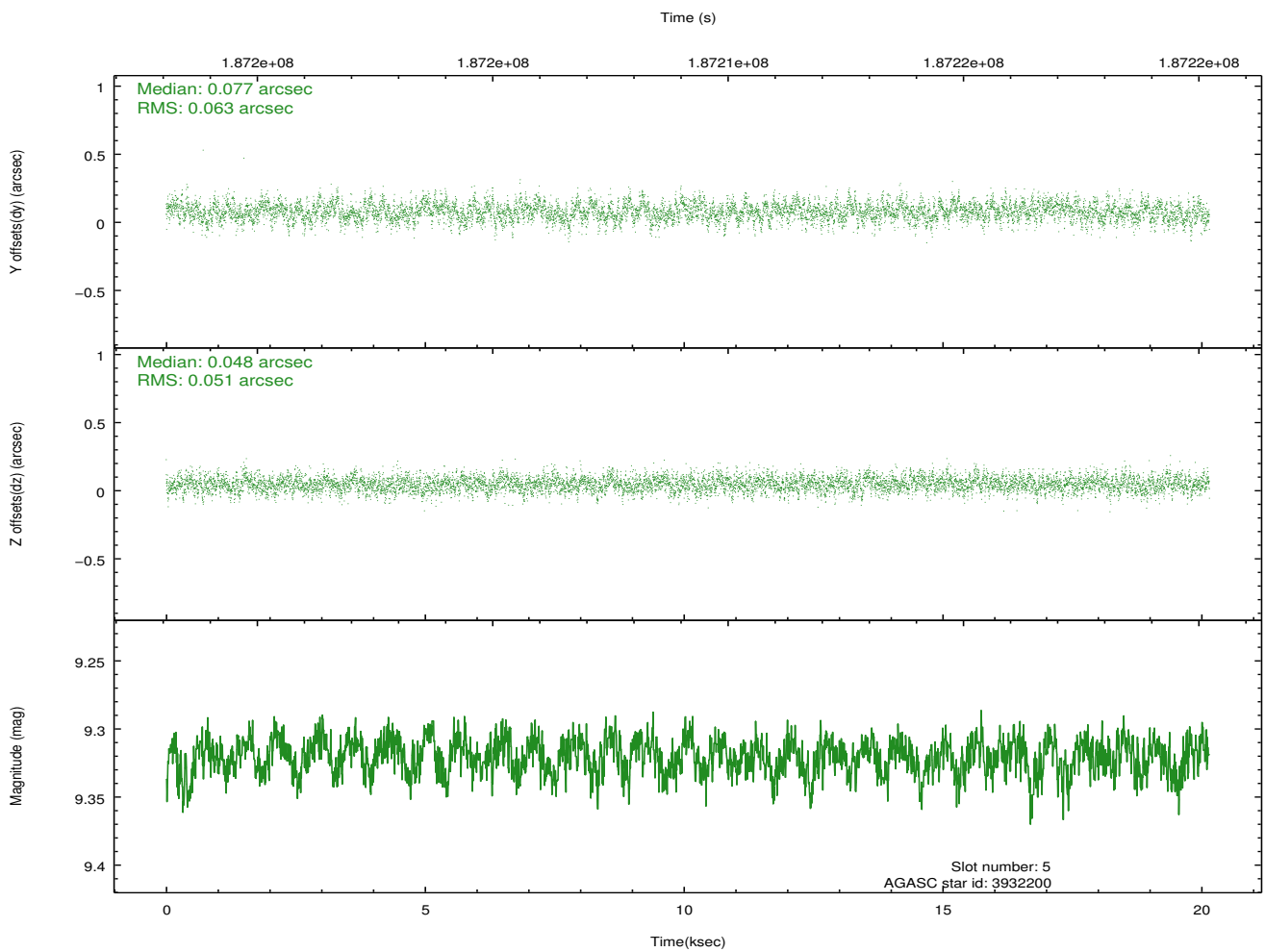
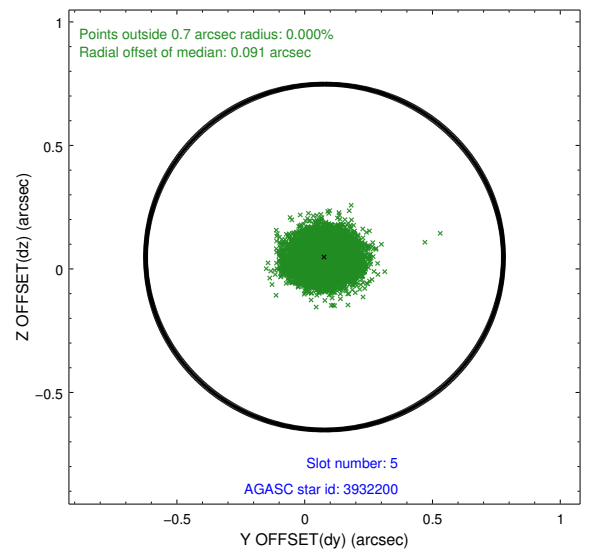
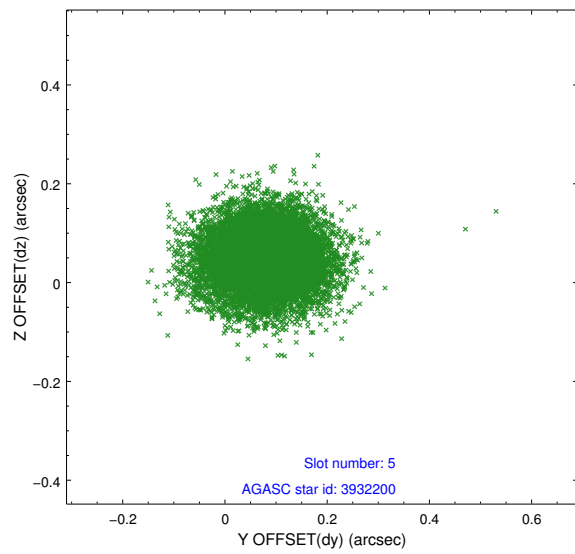
2.4.1 Slot 3



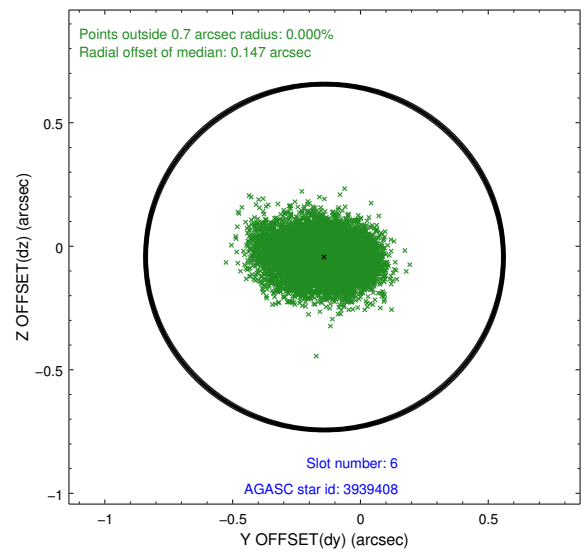
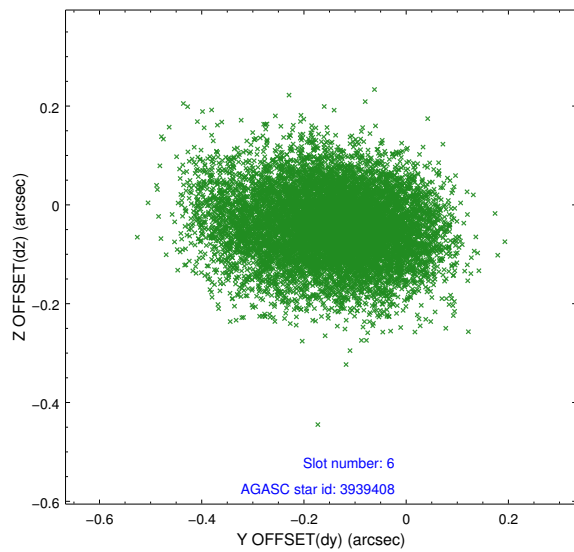
2.4.2 Slot 4



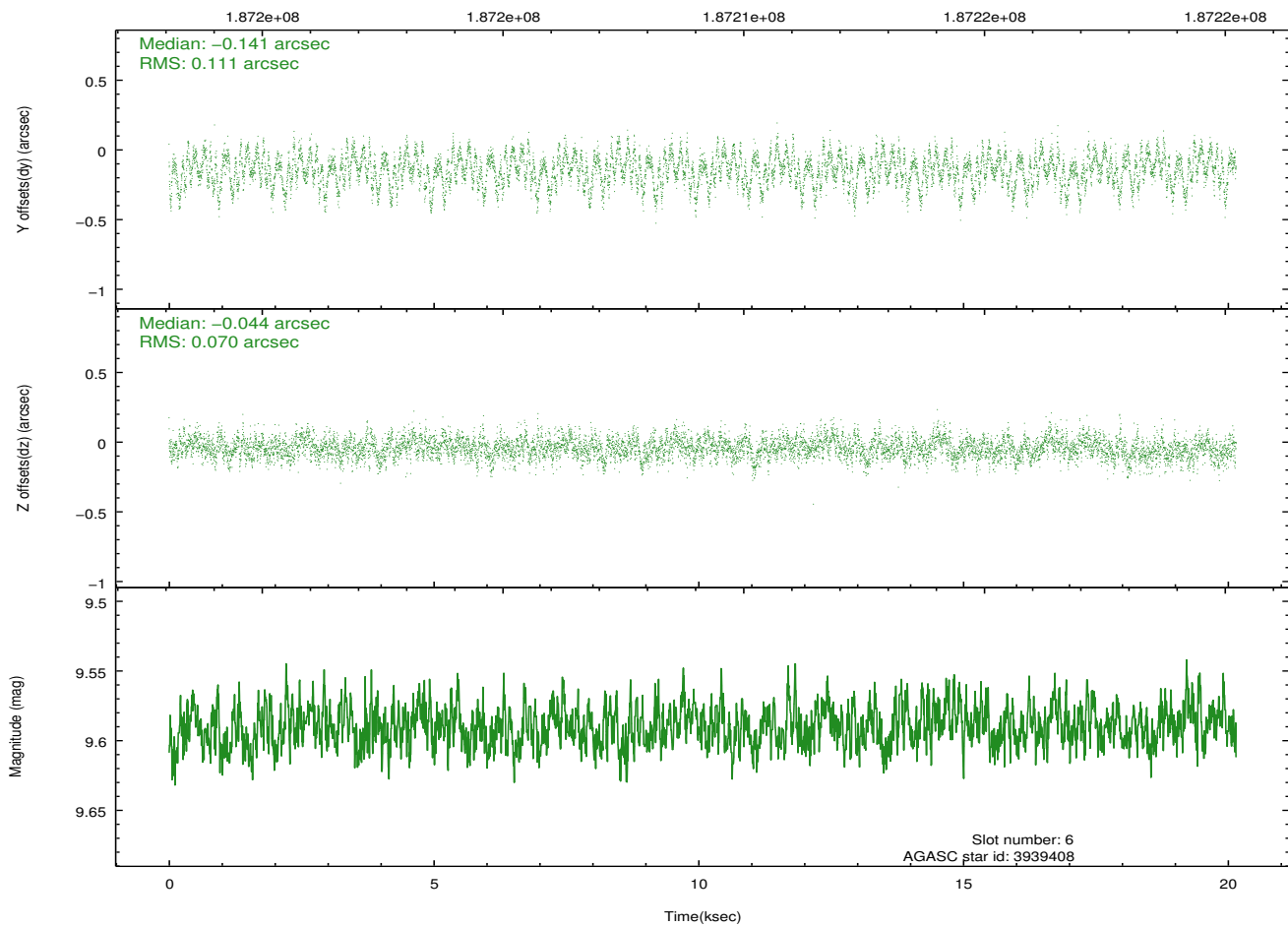
2.4.3 Slot 5



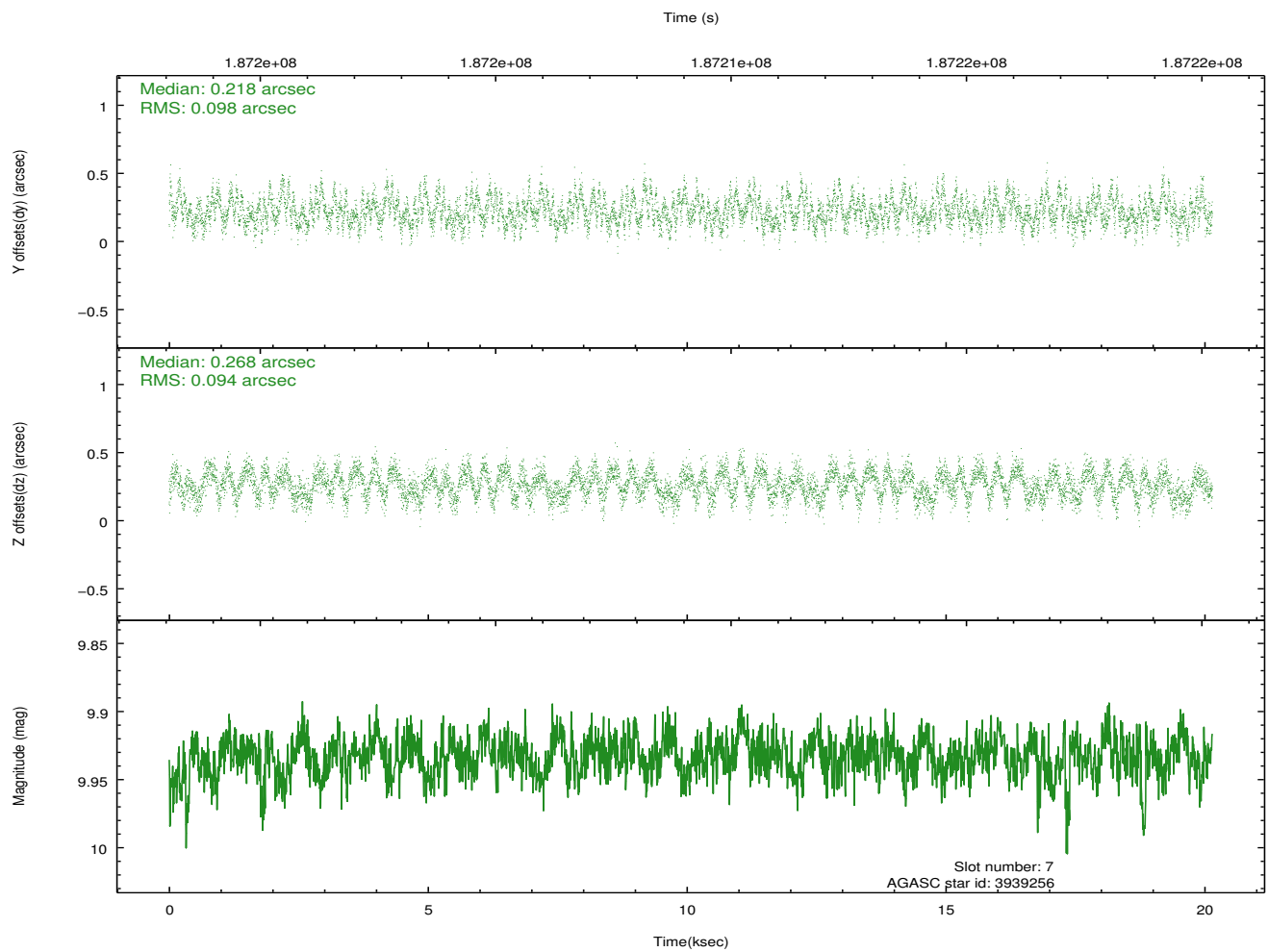
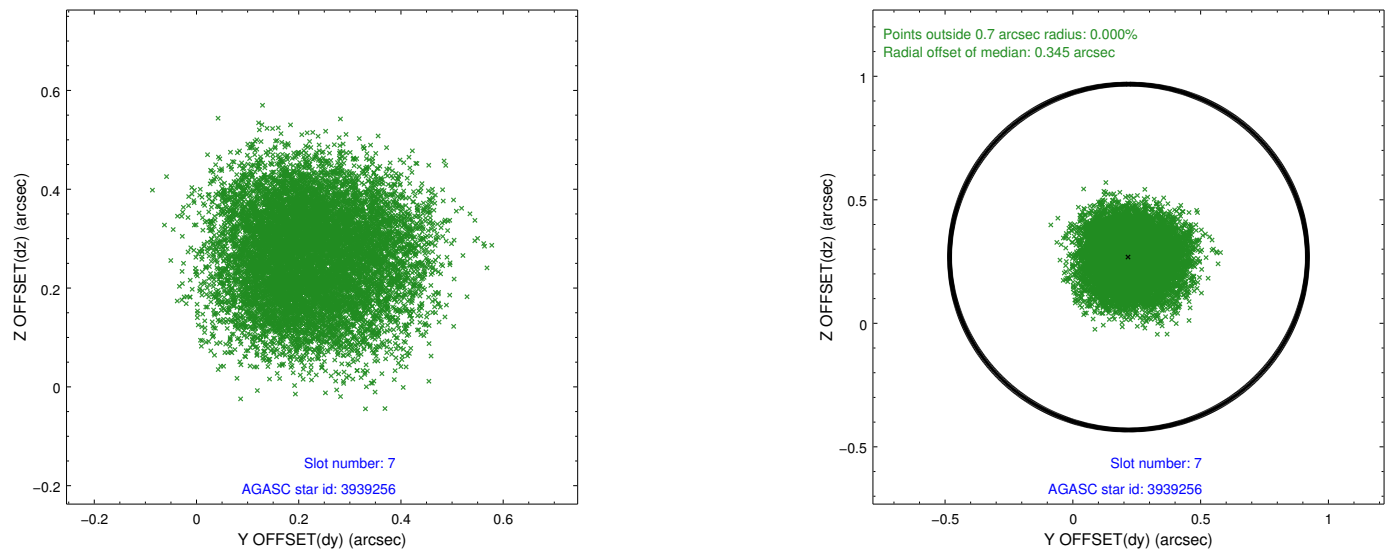
2.4.4 Slot 6



Time (s)

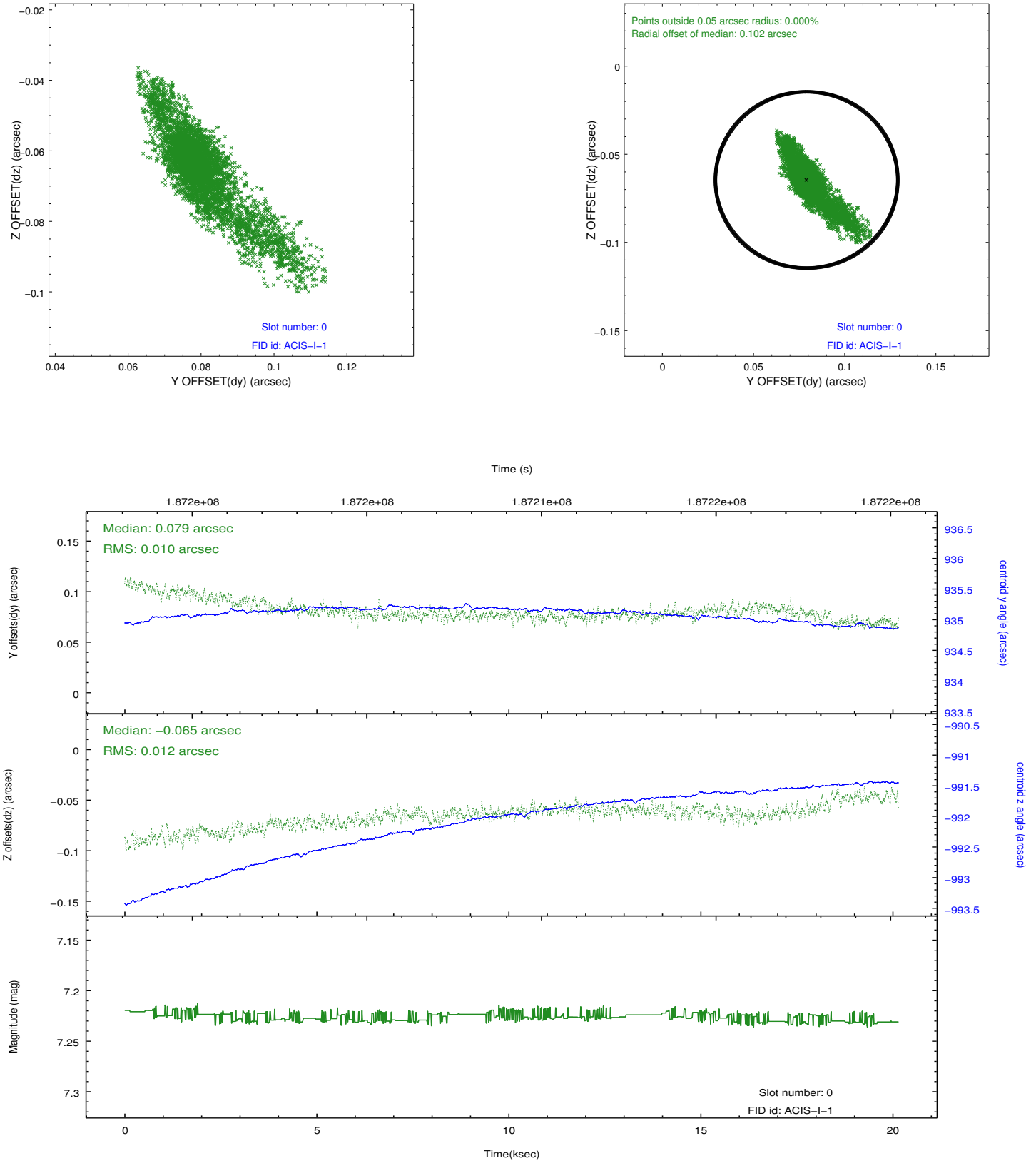


2.4.5 Slot 7

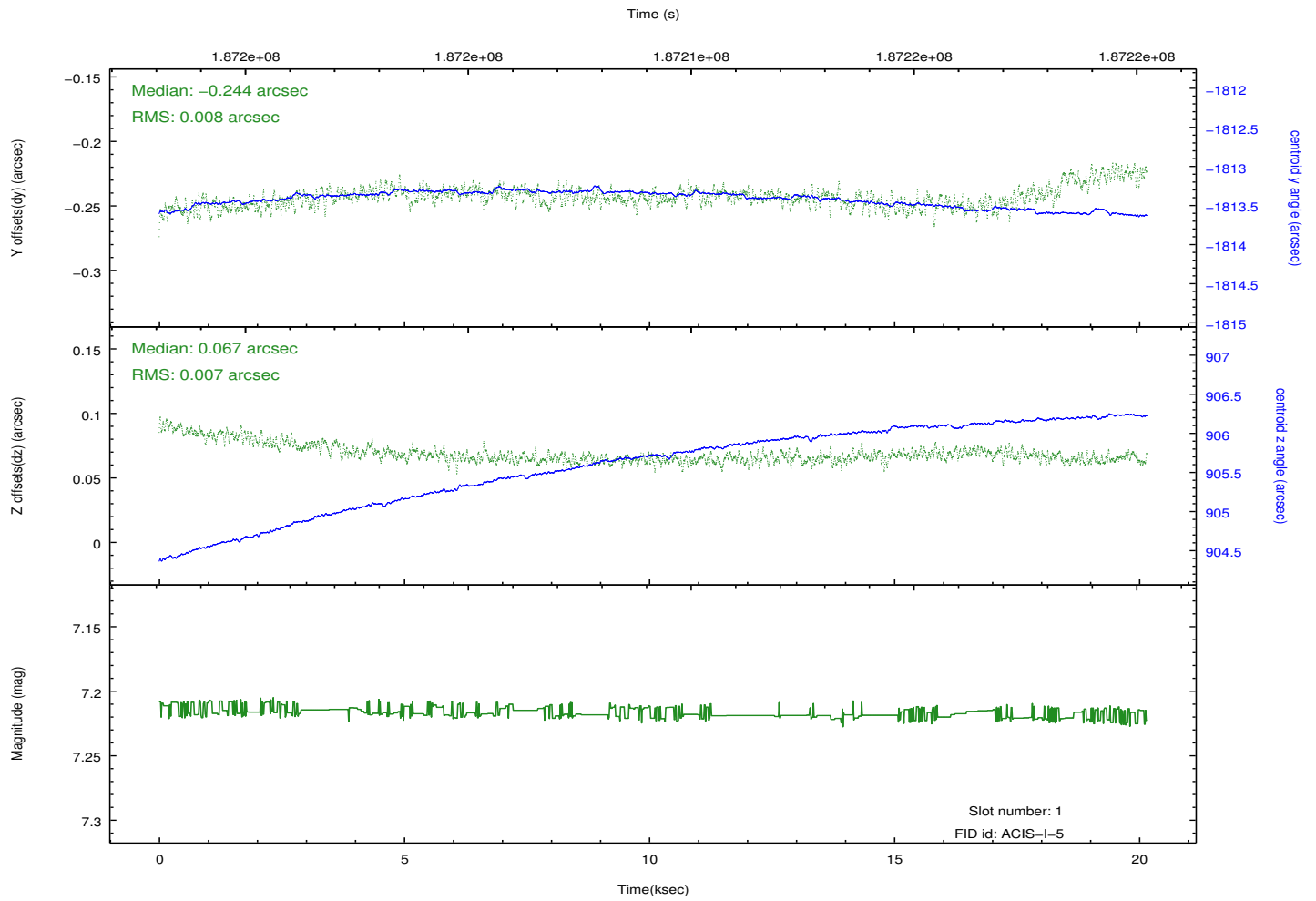
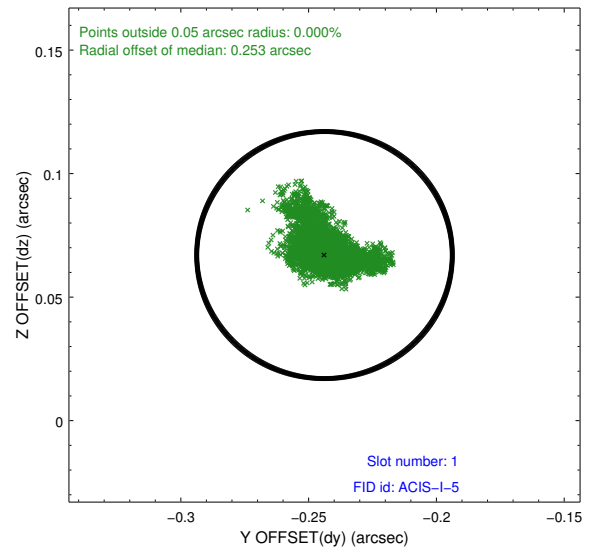
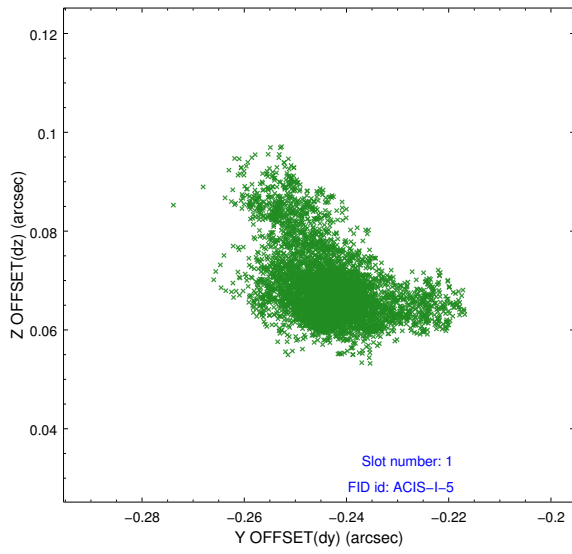


2.5 FID Slots

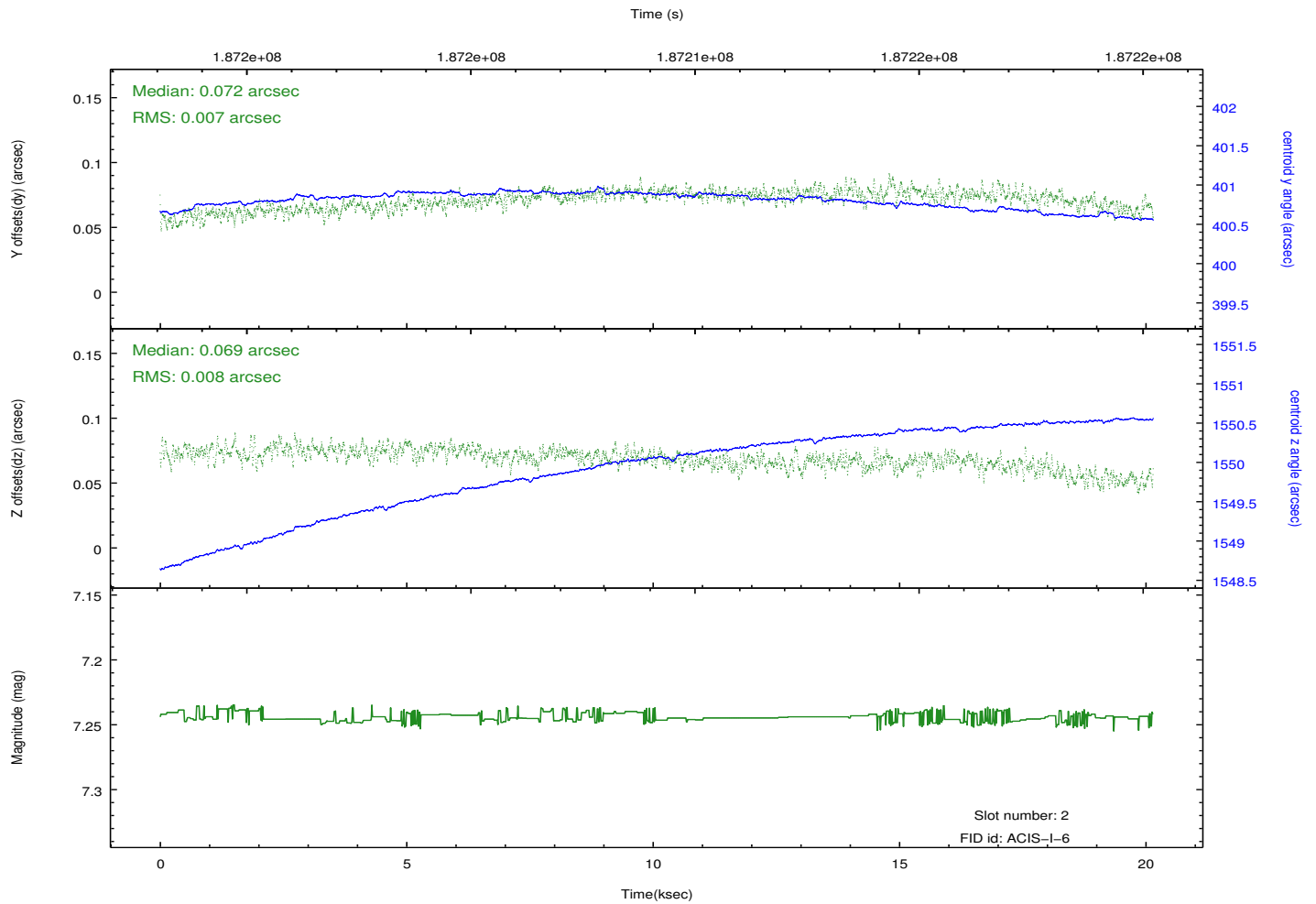
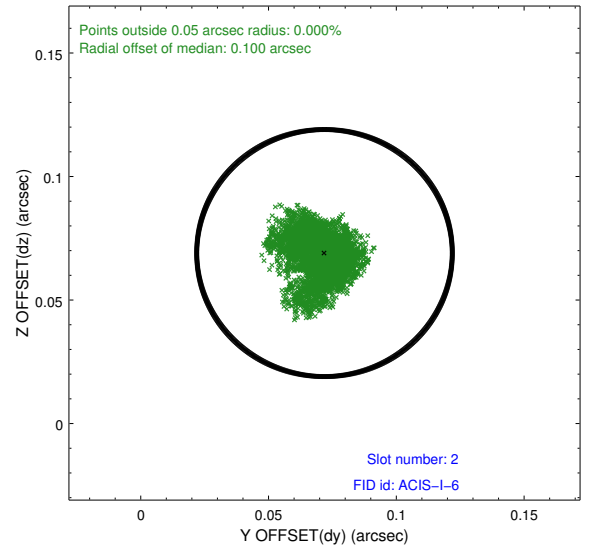
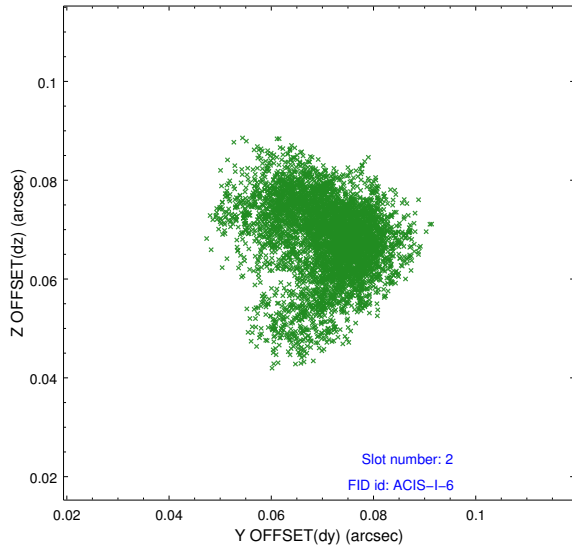
2.5.1 Slot 0



2.5.2 Slot 1



2.5.3 Slot 2



A Summary

A.1 Status

V&V Scientist	Jen Lauer
V&V Date (YYYY-MM-DD)	2012.12.02
V&V Edition	1
V&V Disposition and Status	OK
V&V Charge Time	20.143

A.2 Comments