

V&V Reference Report

L2 ASCDS Version : 8.4.5

Observation 3730 - L2 Version 3
Chandra X-Ray Center

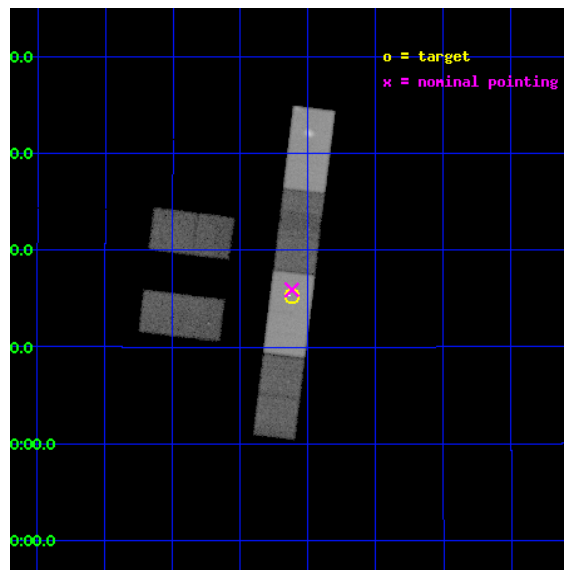
L2 Processing Date : Nov 5 2012

Contents

1	Front	2
2	OBI	3
2.1	OBI	3
2.1.1	Images	3
2.1.2	Bias	3
2.1.3	Parameters	4
2.1.4	Events	4
2.2	Compared Parameters	5
2.3	Aspect	6
2.4	Star Slots	9
2.4.1	Slot 3	9
2.4.2	Slot 4	10
2.4.3	Slot 5	11
2.4.4	Slot 6	12
2.4.5	Slot 7	13
2.5	FID Slots	14
2.5.1	Slot 0	14
2.5.2	Slot 1	15
2.5.3	Slot 2	16
A	Summary	17
A.1	Status	17
A.2	Comments	17

1 Front

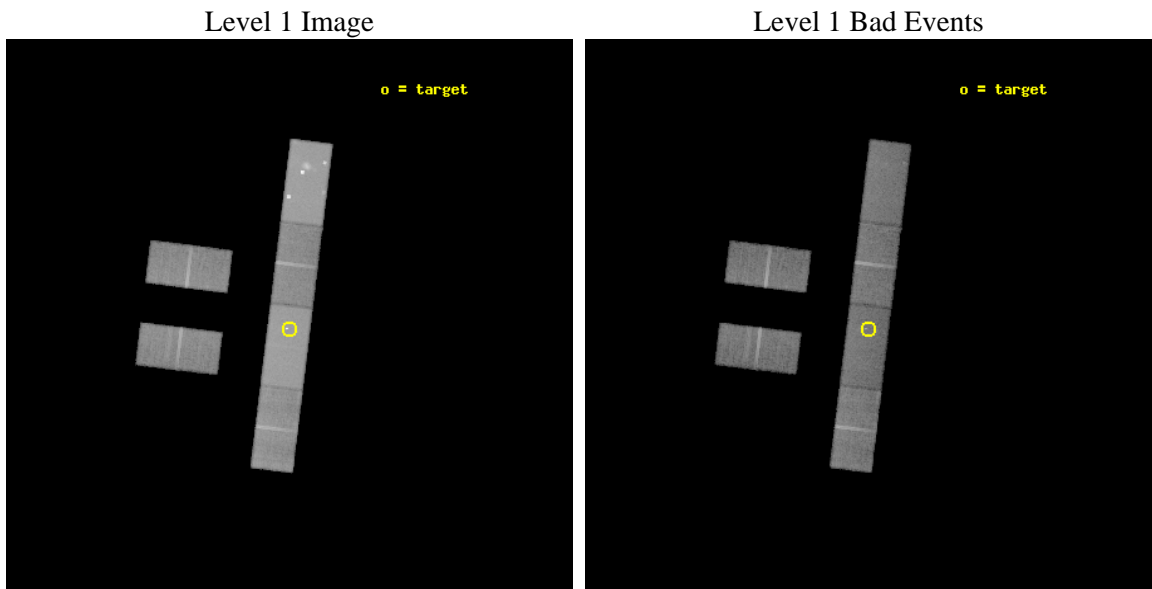
seq_num	200200	Sequence number
obs_id	3730	Observation id
title	MORPHOLOGY OF THE X-RAY EMISSION FROM PROTOSTELLAR JETS	Proposal t
observer	Dr. Fabio Favata	Principal investigator
object	HH 355F	Source name
dtcycle	0	
cycle	P	events from which exps? Prim/Second/Both
ra_targ	65.529167	Observer's specified target RA [deg]
dec_targ	19.255556	Observer's specified target Dec [deg]
ra_nom	65.529715015921	Nominal RA [deg]
dec_nom	19.265206710782	Nominal Dec [deg]
roll_nom	97.033511514898	Nominal Roll [deg]
revision	3	Processing version of data
ontime	31753.800210297	Sum of GTIs [s]
livetime	31045.952493447	Livetime [s]
ontime2	31753.800210297	Sum of GTIs [s]
ontime3	31753.800210297	Sum of GTIs [s]
ontime5	31753.800210297	Sum of GTIs [s]
ontime6	31753.800210297	Sum of GTIs [s]
ontime7	31753.800210297	Sum of GTIs [s]
ontime8	31753.800210297	Sum of GTIs [s]
l2events	351192	Number of level 2 events



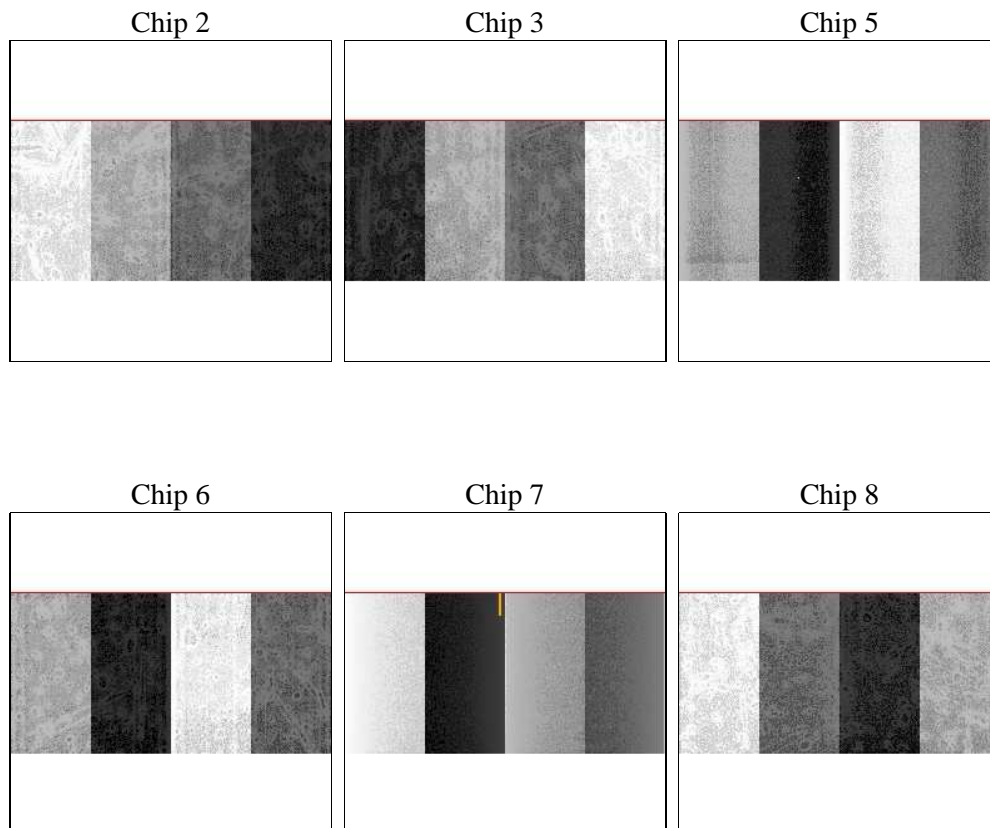
2 OBI

2.1 OBI

2.1.1 Images



2.1.2 Bias



2.1.3 Parameters

obi_num	0	Obi number	sched_exp_time	31573.348000	[s] Scheduled observation exposure time
ascdsver	8.4.5	Processing system revision	ontime	31753.800210297	Sum of GTIs [s]
caldbver	4.5.2	 	ontime2	31753.800210297	Sum of GTIs [s]
date	2012-11-05T20:35:27	Date and time of file creation	ontime3	31753.800210297	Sum of GTIs [s]
revision	3	Processing version of data	ontime5	31753.800210297	Sum of GTIs [s]
			ontime6	31753.800210297	Sum of GTIs [s]
			ontime7	31753.800210297	Sum of GTIs [s]
			ontime8	31753.800210297	Sum of GTIs [s]
			l1events	1017216	Number of level 1 events

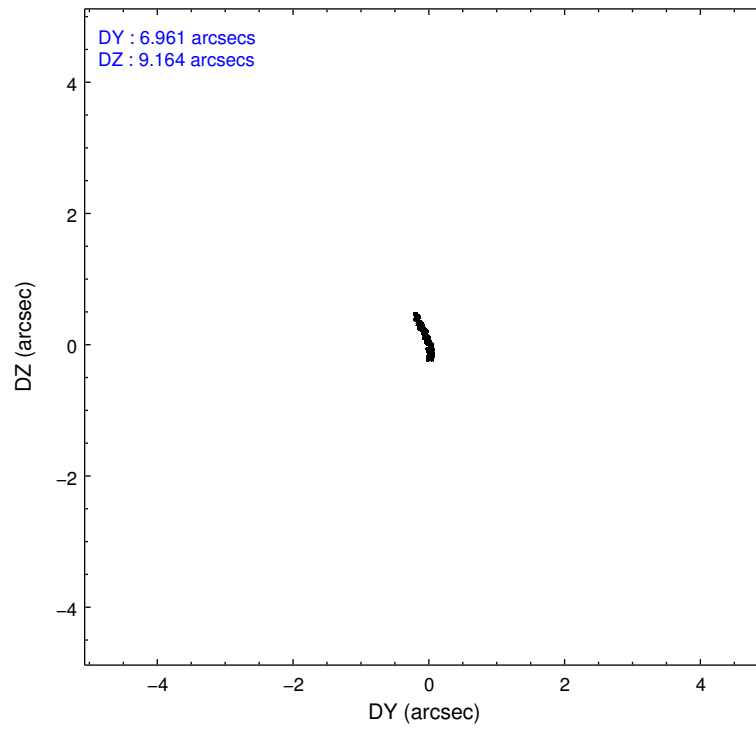
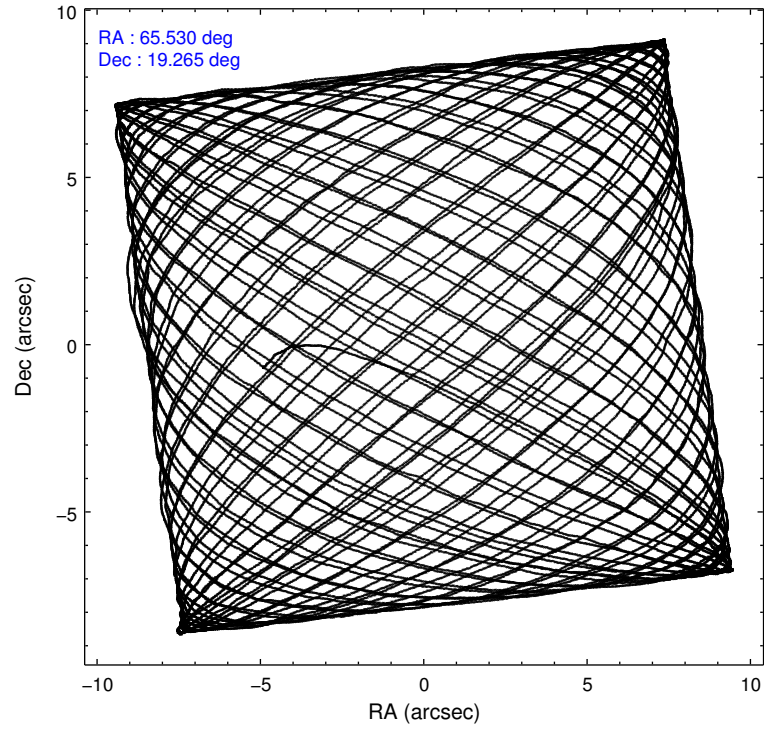
2.1.4 Events

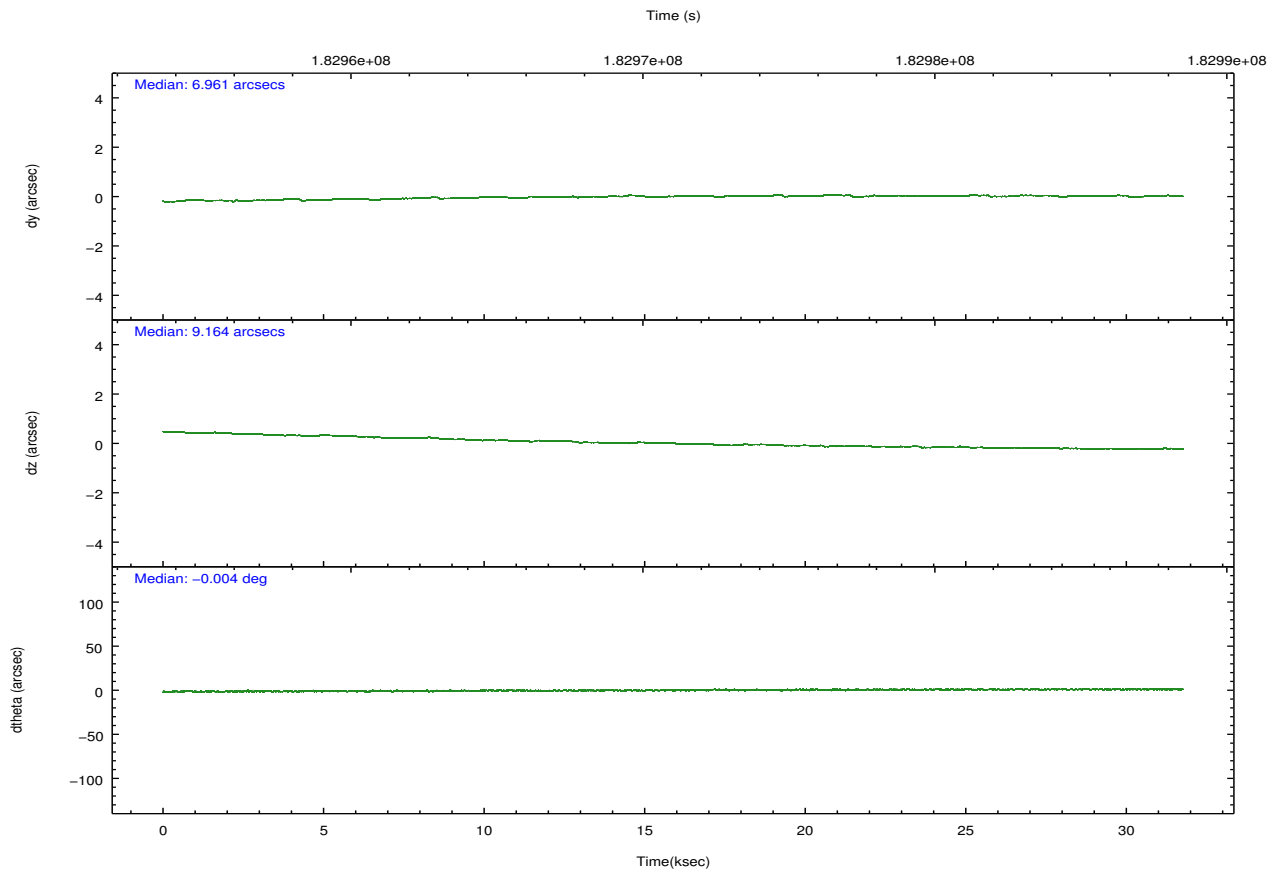
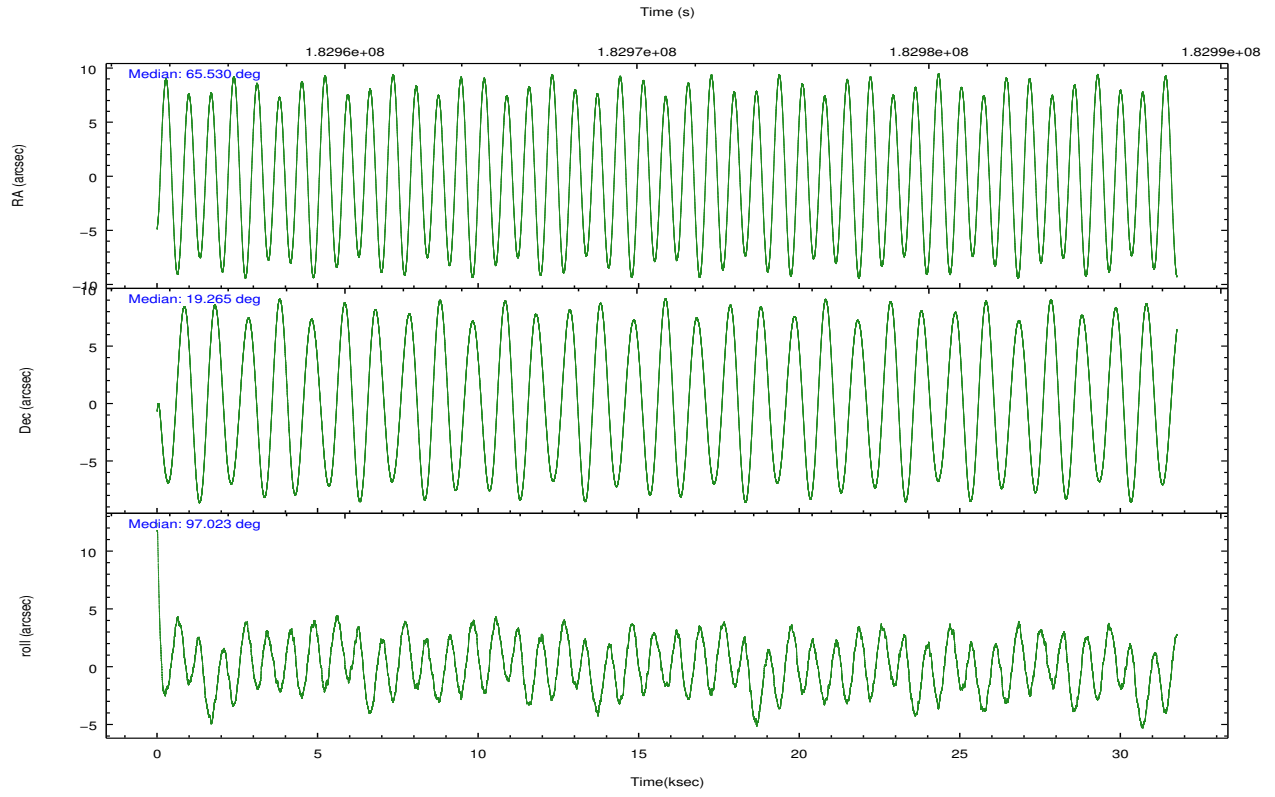
	ccd 2	ccd 3	ccd 5	ccd 6	ccd 7	ccd 8		ccd 2	ccd 3	ccd 5	ccd 6	ccd 7	ccd 8
level 1 events	124771	118648	265187	126262	223192	159156	grade 0 events	10289	10296	46912	14034	15732	17765
rejected events	104810	98980	96517	100791	88164	118786		8%	8%	17%	11%	7%	11%
rejected %	84%	83%	36%	79%	39%	74%	grade 1 events	60	60	266	59	208	101
								0%	0%	0%	0%	0%	0%
							grade 2 events	3686	3594	41931	4796	25995	8021
								2%	3%	15%	3%	11%	5%
							grade 3 events	1647	1733	8584	1793	11758	3465
								1%	1%	3%	1%	5%	2%
							grade 4 events	1773	1684	8310	1771	11559	3373
								1%	1%	3%	1%	5%	2%
							grade 5 events	4352	4753	13714	4843	14633	6391
								3%	4%	5%	3%	6%	4%
							grade 6 events	2874	2631	65094	3378	71466	8441
								2%	2%	24%	2%	32%	5%
							grade 7 events	100090	93897	80376	95588	71841	111599
								80%	79%	30%	75%	32%	70%

2.2 Compared Parameters

Parameter	Planned	Actual	Parameter	Planned	Actual
Instrument	ACIS	ACIS	Obspar format version number	7	7
Detector	ACIS-235678	ACIS-235678	Obspar file type	PREDICTED	ACTUAL
Grating	NONE	NONE	Obspar update status	NONE	UPDATED
Data mode	FAINT	FAINT	Number of optional ACIS chips dropped	0	0
Observation mode	POINTING	POINTING	On-chip summing requested	N	N
[deg] Pointing RA	65.547398	65.52971501592141	Subarray requested	CUSTOM	1/2
[deg] Pointing Dec	19.243695	19.26520671078246	Subarray start row	257	257
[deg] Pointing Roll	96.871051	97.0335115148978	Subarray row count	512	512
[mm] SIM focus pos	-0.684267	-0.6828225247311905	Alternating exposures requested	N	N
[mm] SIM defocus	0	0.001444936568705701	[s] Primary exposure time	0.000000	1.8
[mm] SIM translation stage pos	-190.132523	-190.1400660498719			
[mm] SIM translation stage offset	0	0.00754346686406393			
[s] Observation start time (MET)	182955341.184000	182954135.69793			
Observation start date	2003-10-19T12:54:37	2003-10-19T12:35:35			
[s] Observation end time (MET)	182986914.184000	182987228.84935			
Observation end date	2003-10-19T21:40:50	2003-10-19T21:47:08			
Read mode	TIMED	TIMED			

2.3 Aspect



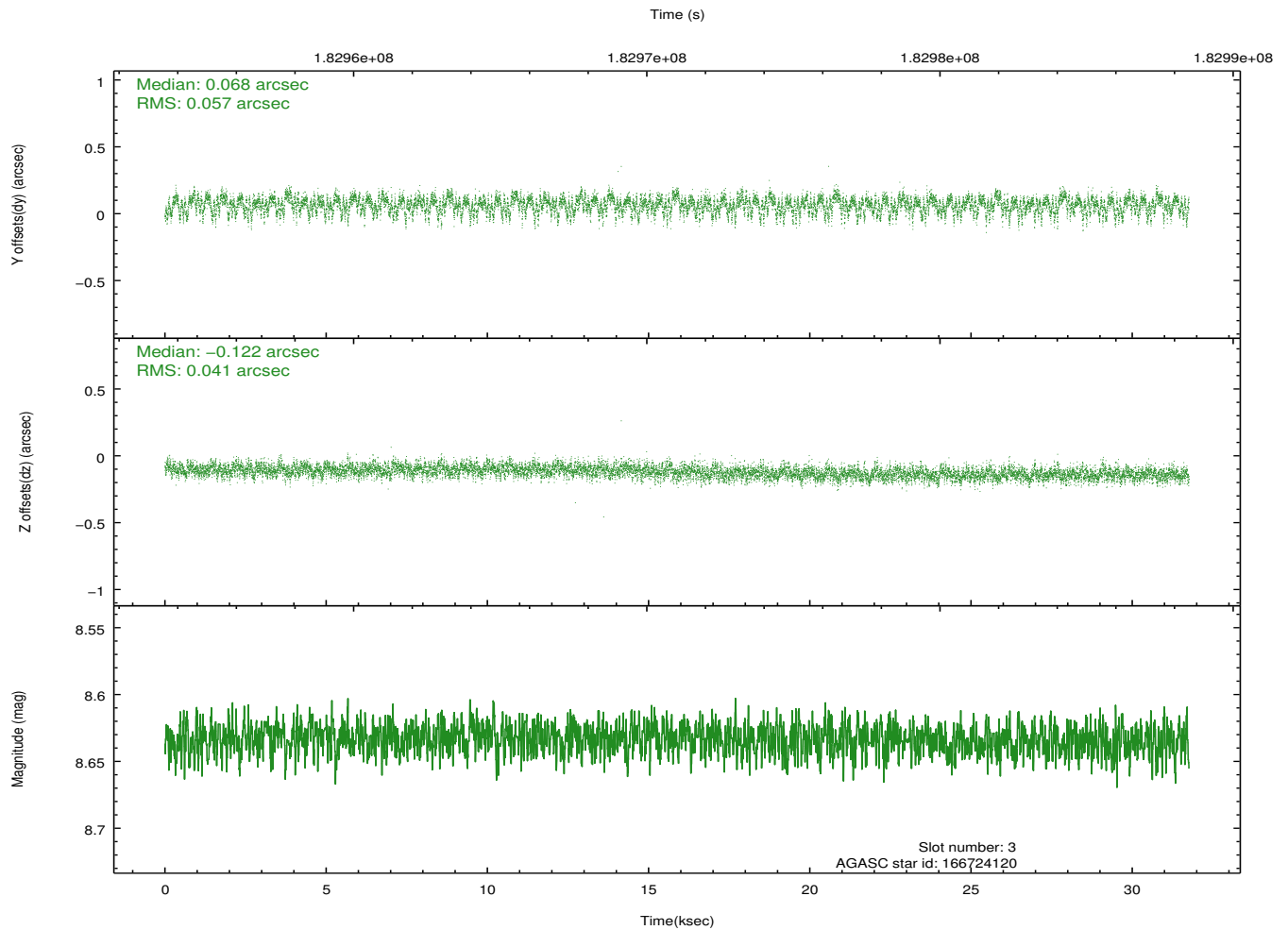
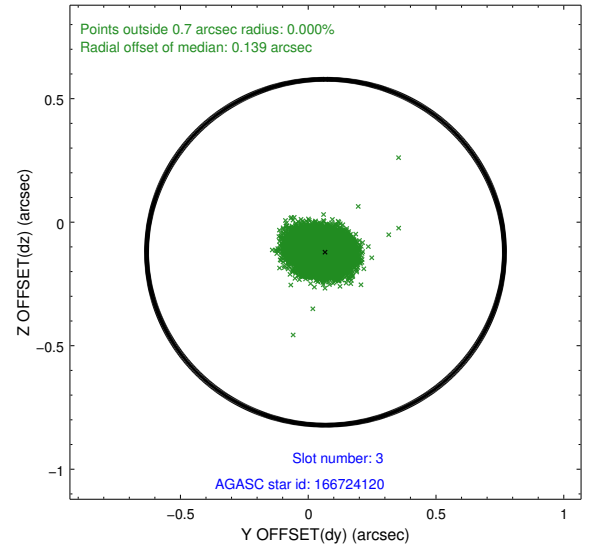
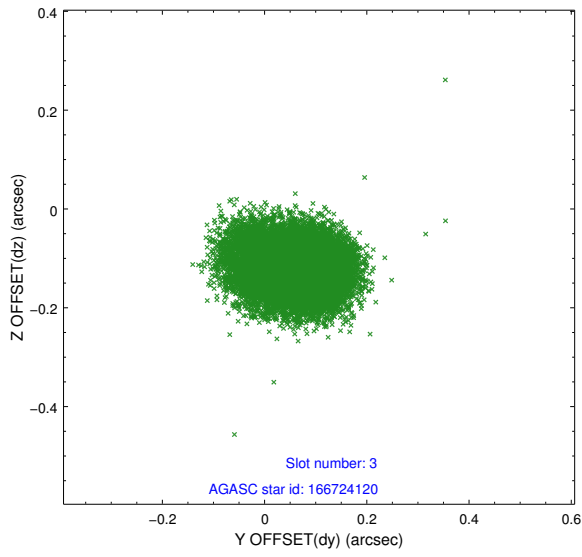


Slot Statistics

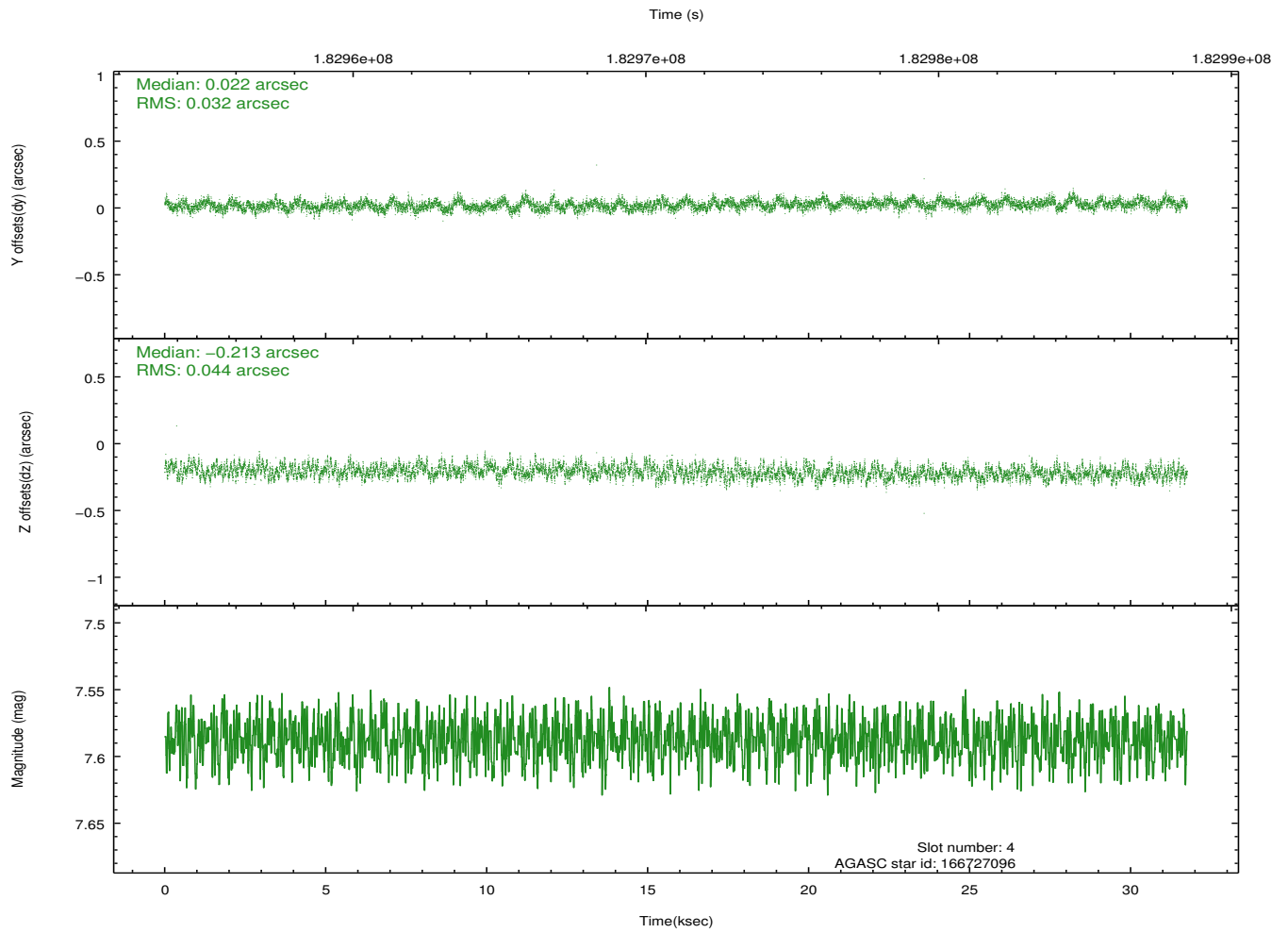
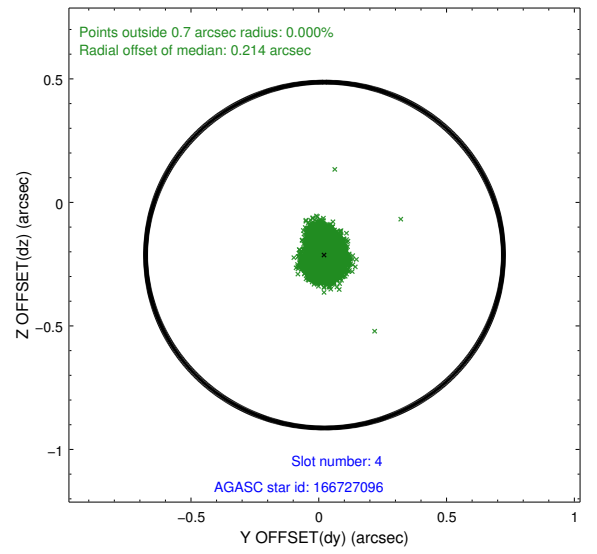
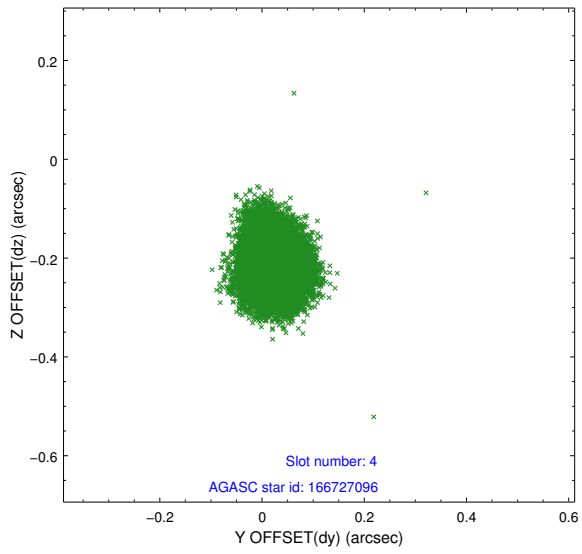
slot	status	id	mag	n_pts	med_dy	med_dz	dr1	dr2	ra	dec	mean_y	mean_z
0	FID	ACIS-S-2	7.10	7746	-0.037	-0.032	0.014	0.019	0.000000	0.000000	-759.71	-1730.46
1	FID	ACIS-S-4	7.20	7745	0.061	0.027	0.018	0.024	0.000000	0.000000	2153.63	178.04
2	FID	ACIS-S-5	7.23	7746	-0.054	0.015	0.010	0.015	0.000000	0.000000	-1812.50	171.73
3	GUIDE	166724120	8.63	15493	0.068	-0.122	0.074	0.123	64.819607	19.724565	2018.80	2240.90
4	GUIDE	166727096	7.59	15492	0.022	-0.213	0.059	0.093	65.054029	19.233473	166.35	1668.50
5	GUIDE	166857688	9.11	15482	0.154	0.066	0.096	0.161	66.140840	19.967901	2352.46	-2305.59
6	GUIDE	166858280	9.21	15487	0.022	0.145	0.076	0.126	66.029038	19.654018	1274.27	-1798.17
7	GUIDE	166860736	9.28	15483	-0.260	0.122	0.098	0.163	66.100337	19.958939	2336.05	-2165.82

2.4 Star Slots

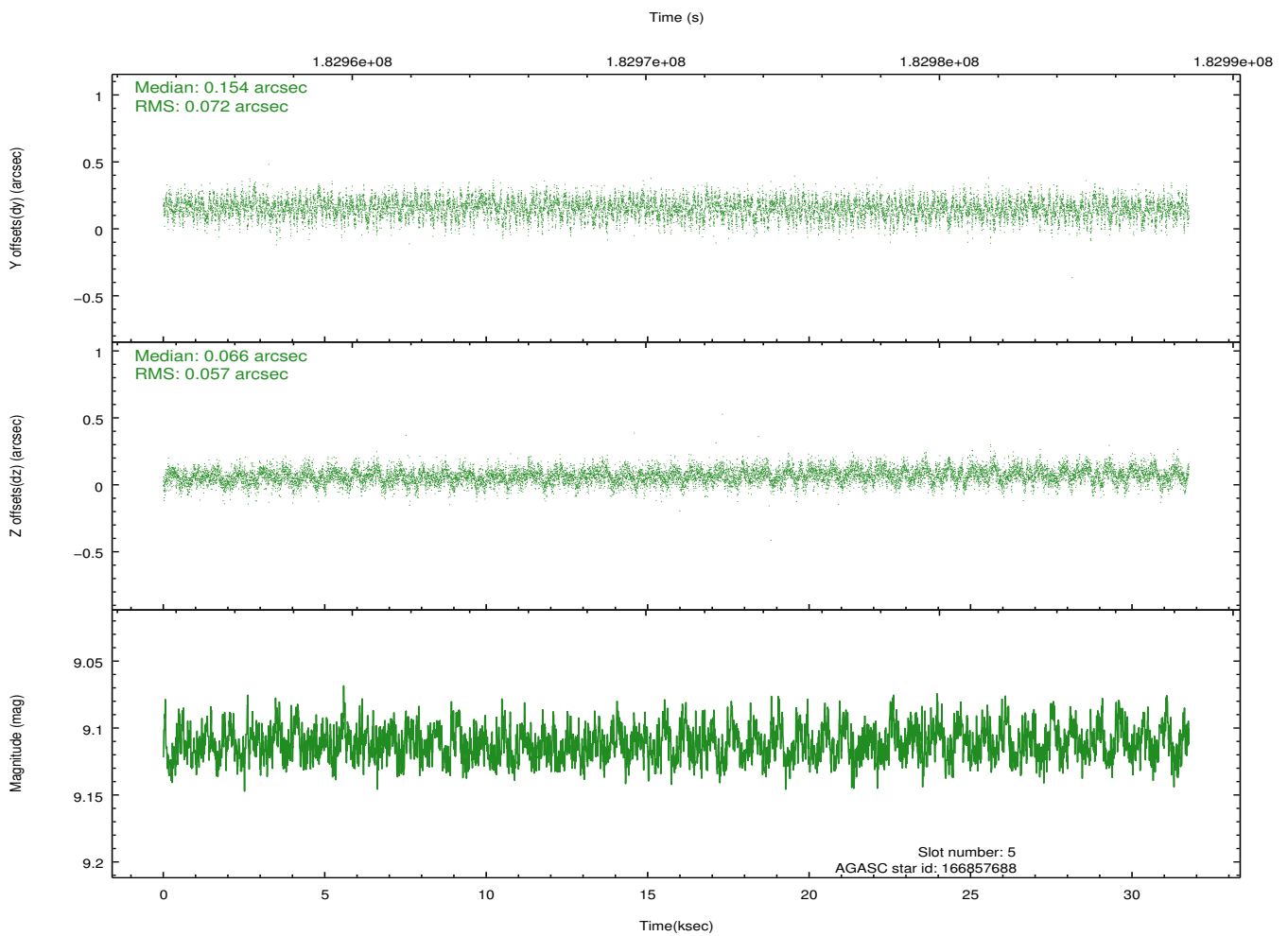
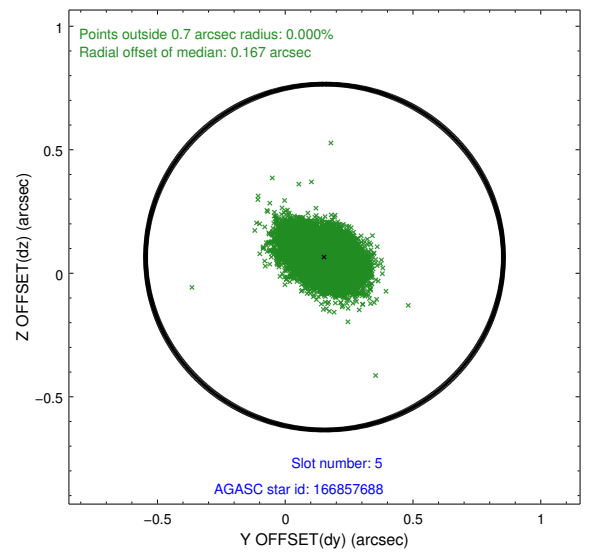
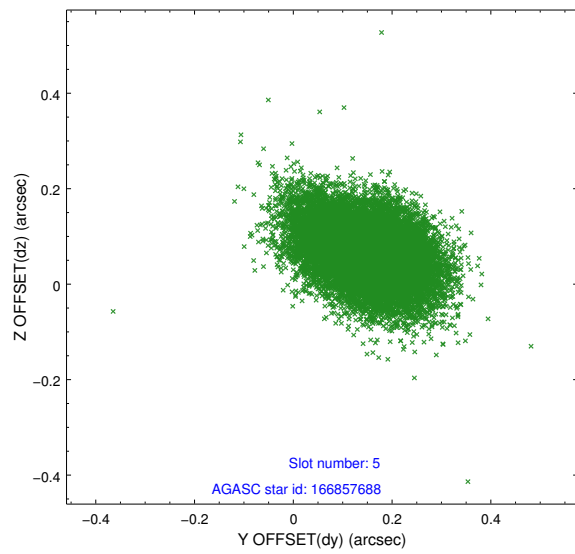
2.4.1 Slot 3



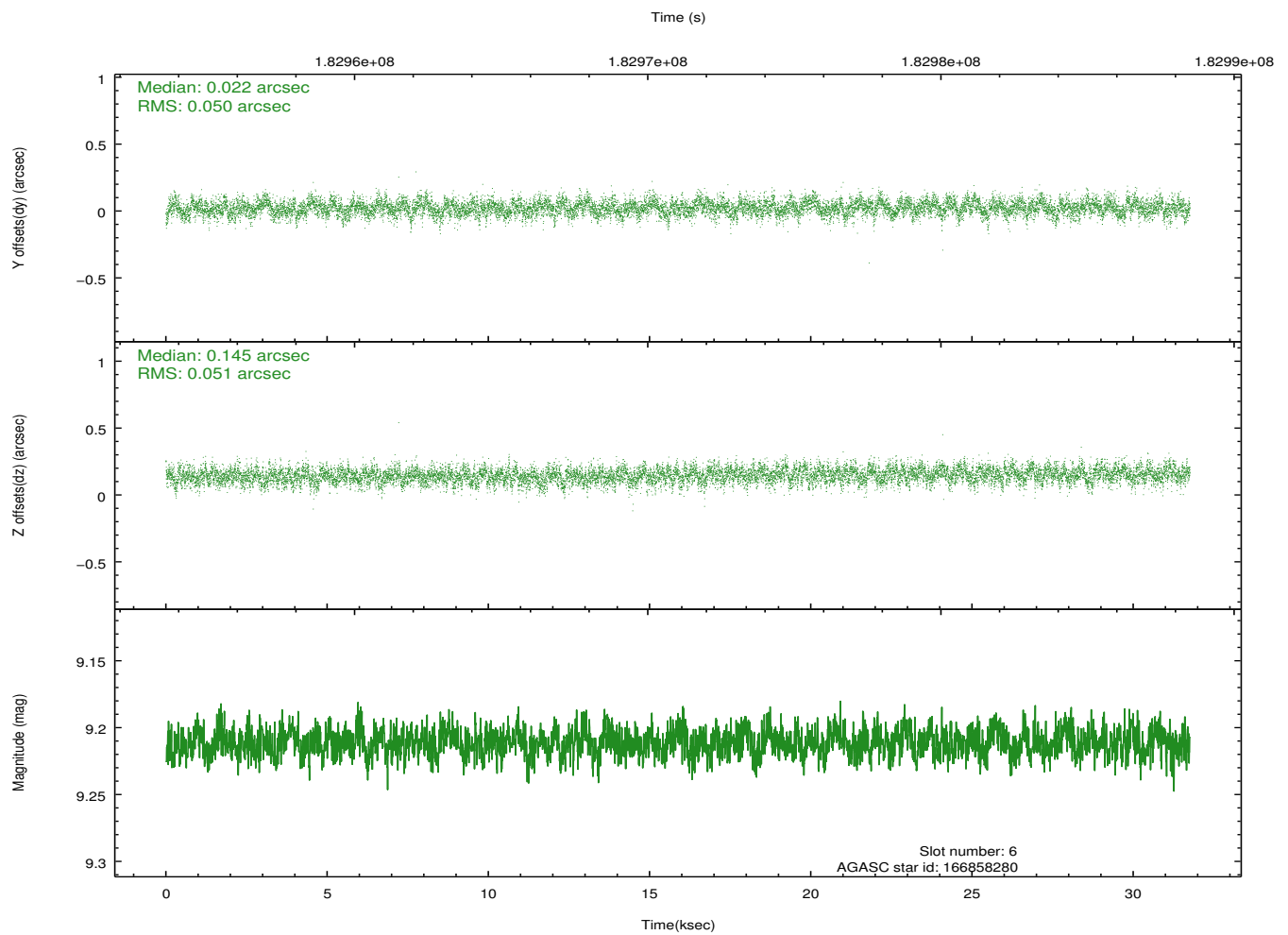
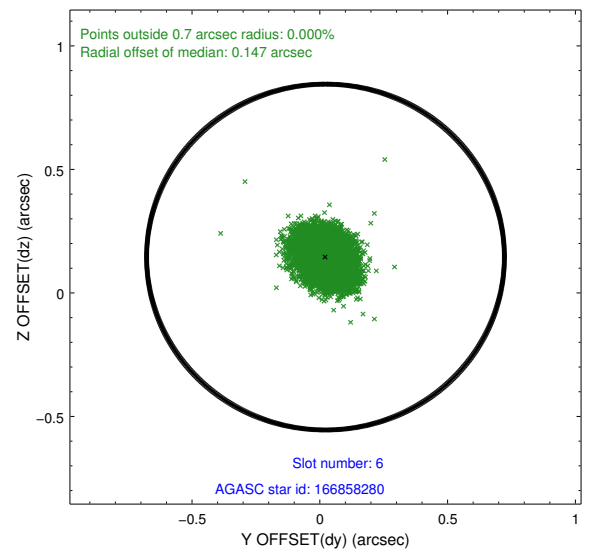
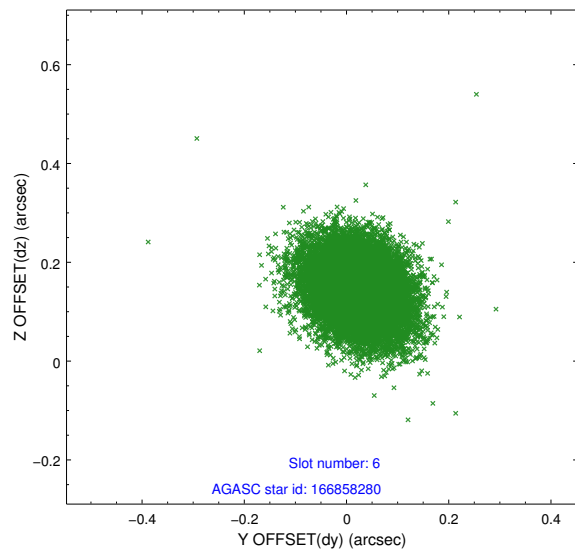
2.4.2 Slot 4



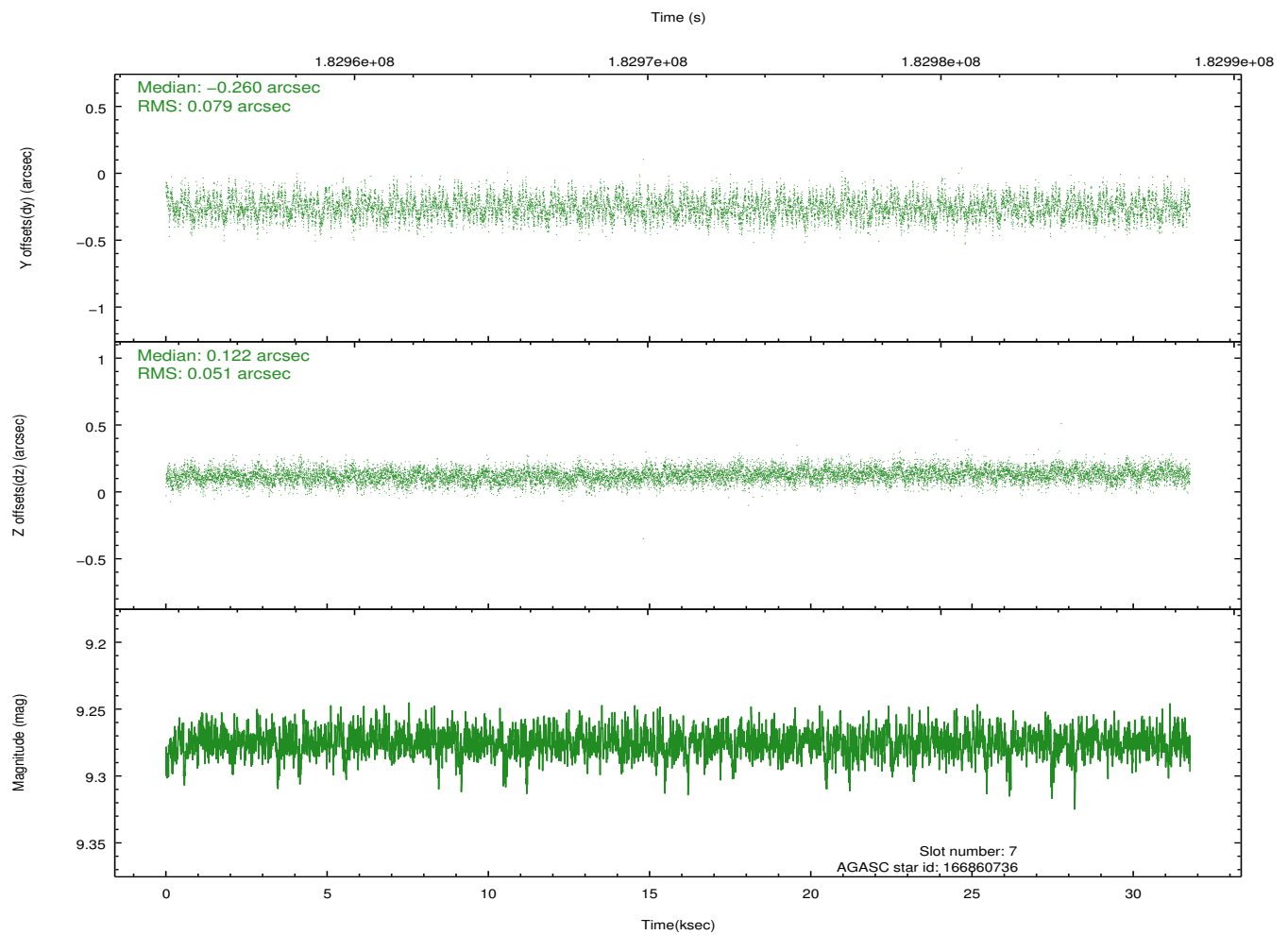
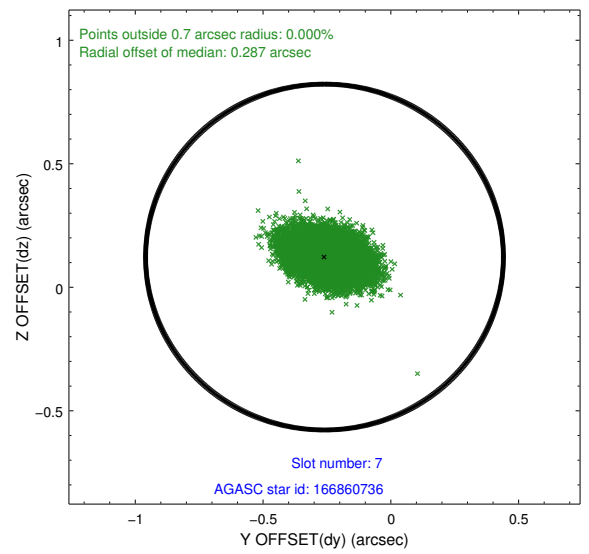
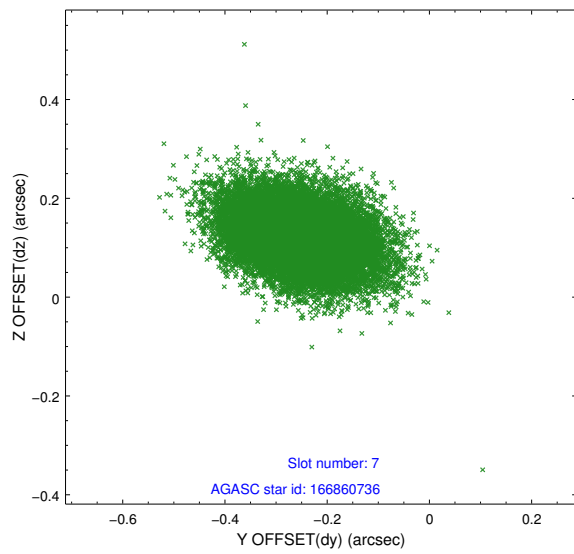
2.4.3 Slot 5



2.4.4 Slot 6

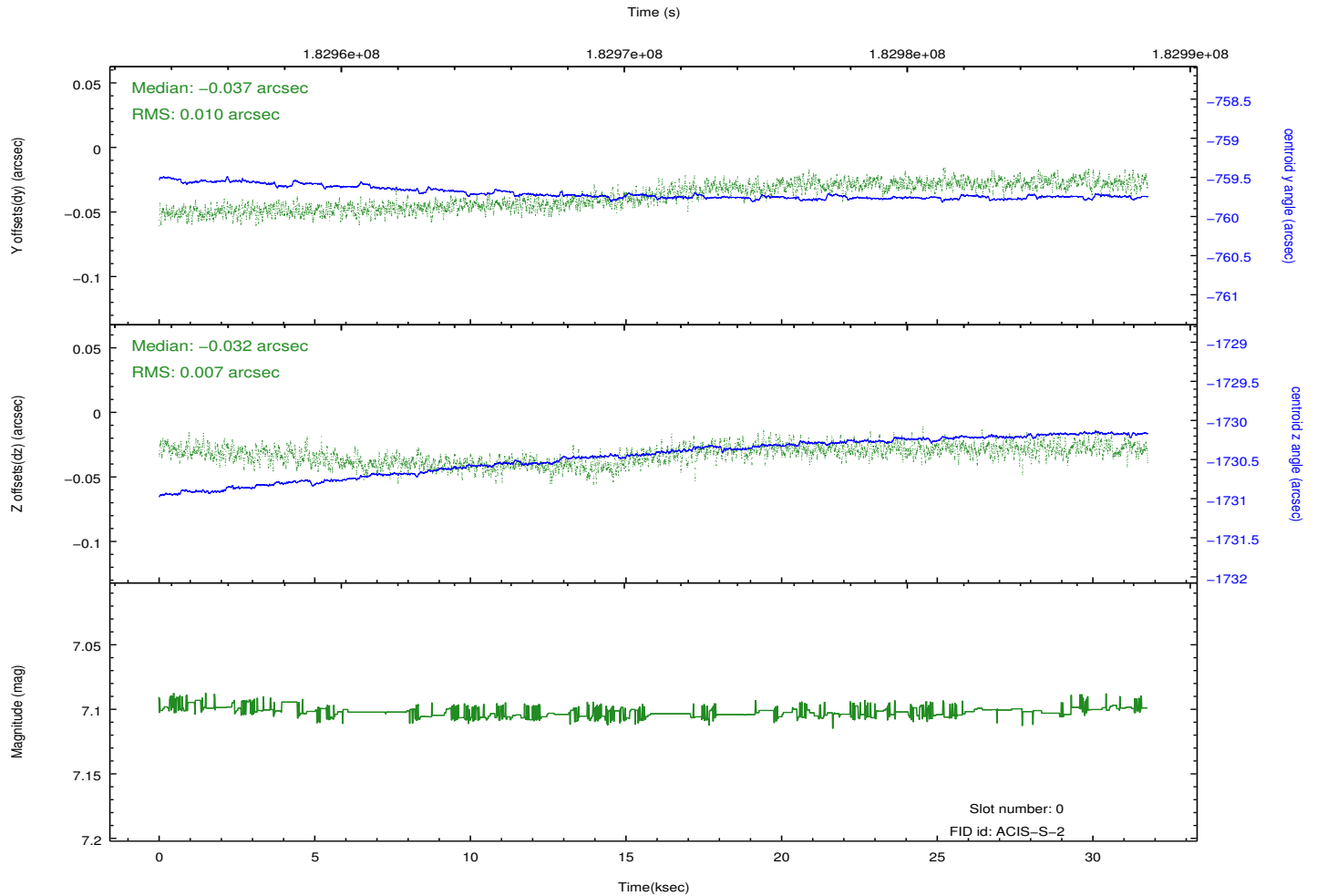
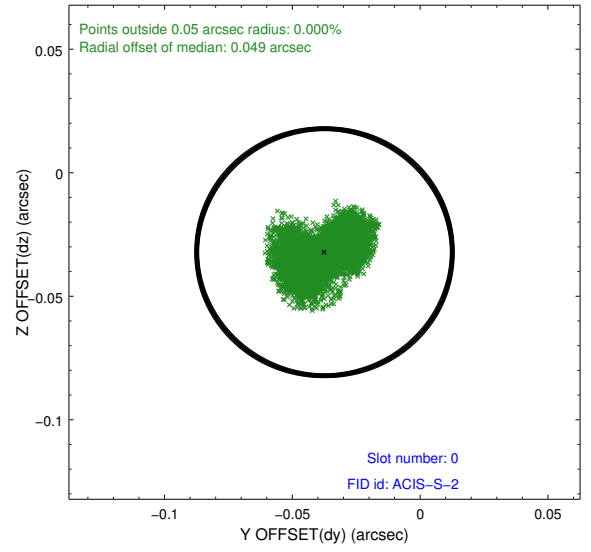
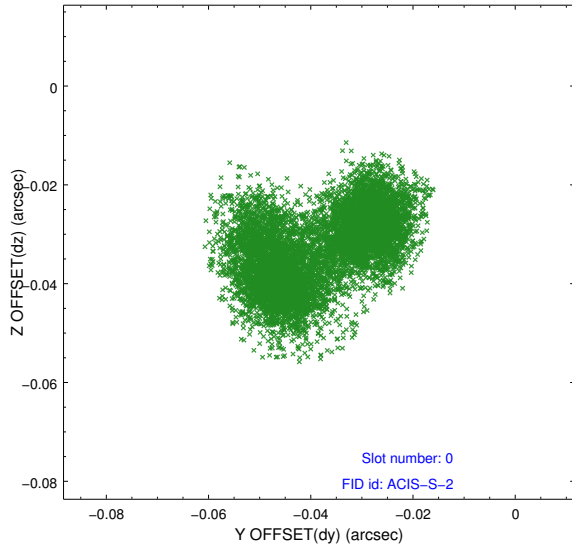


2.4.5 Slot 7

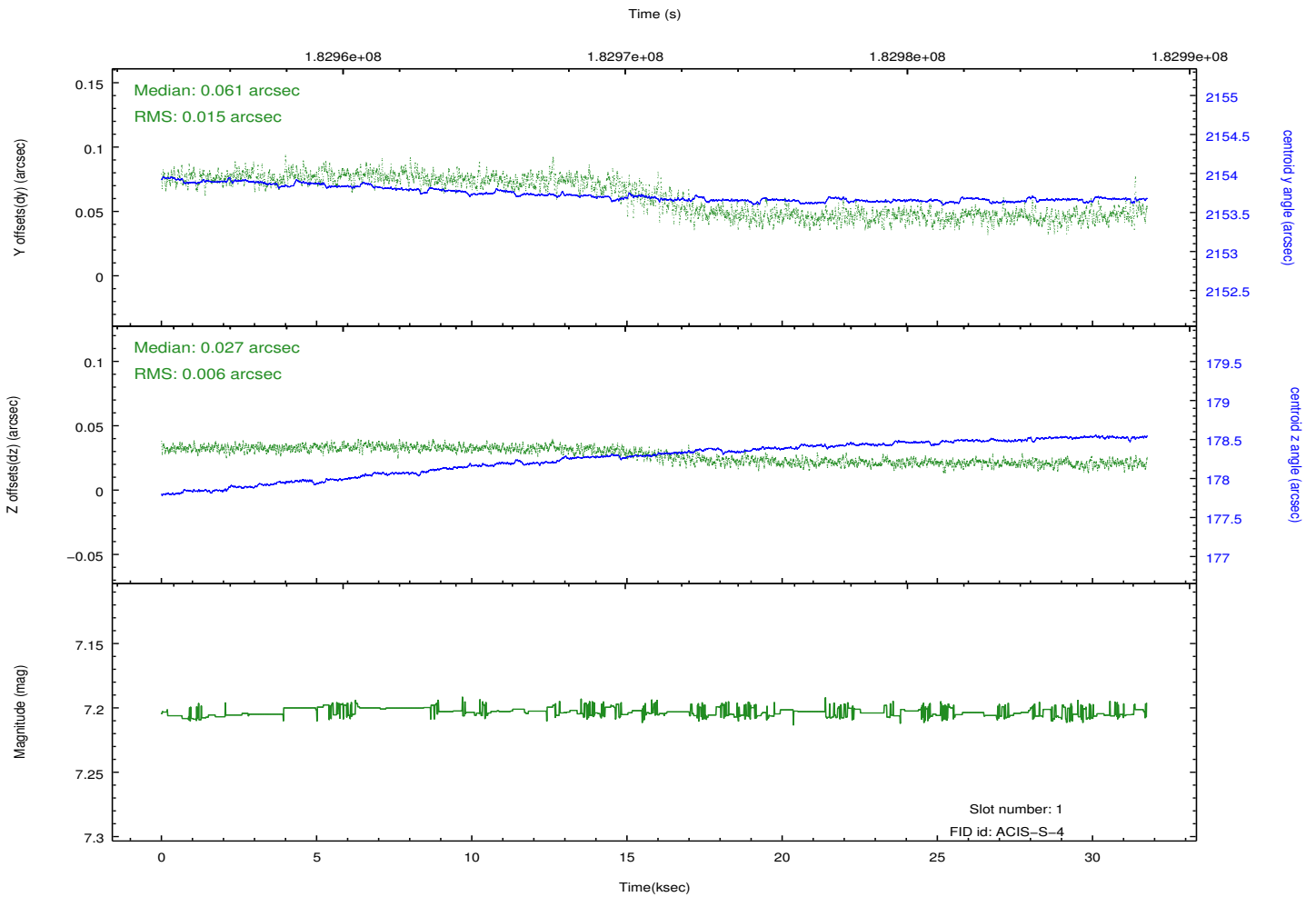
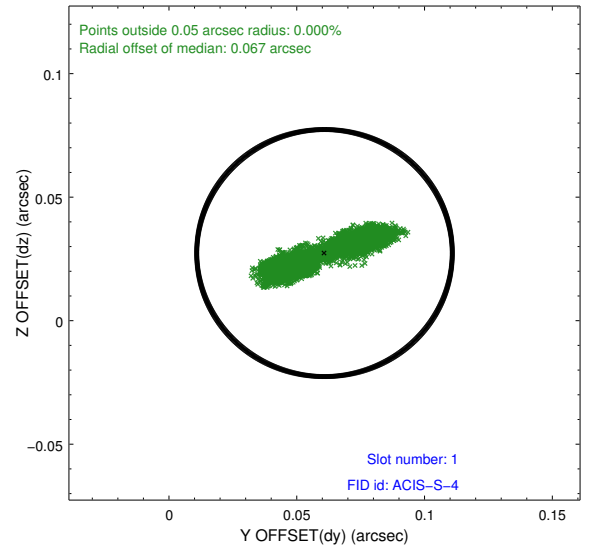
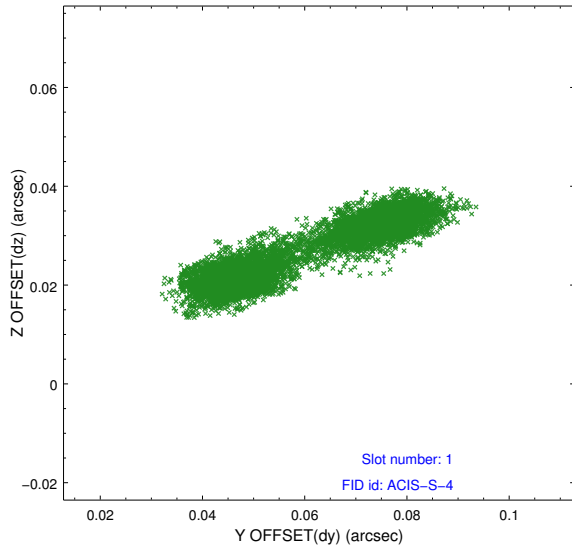


2.5 FID Slots

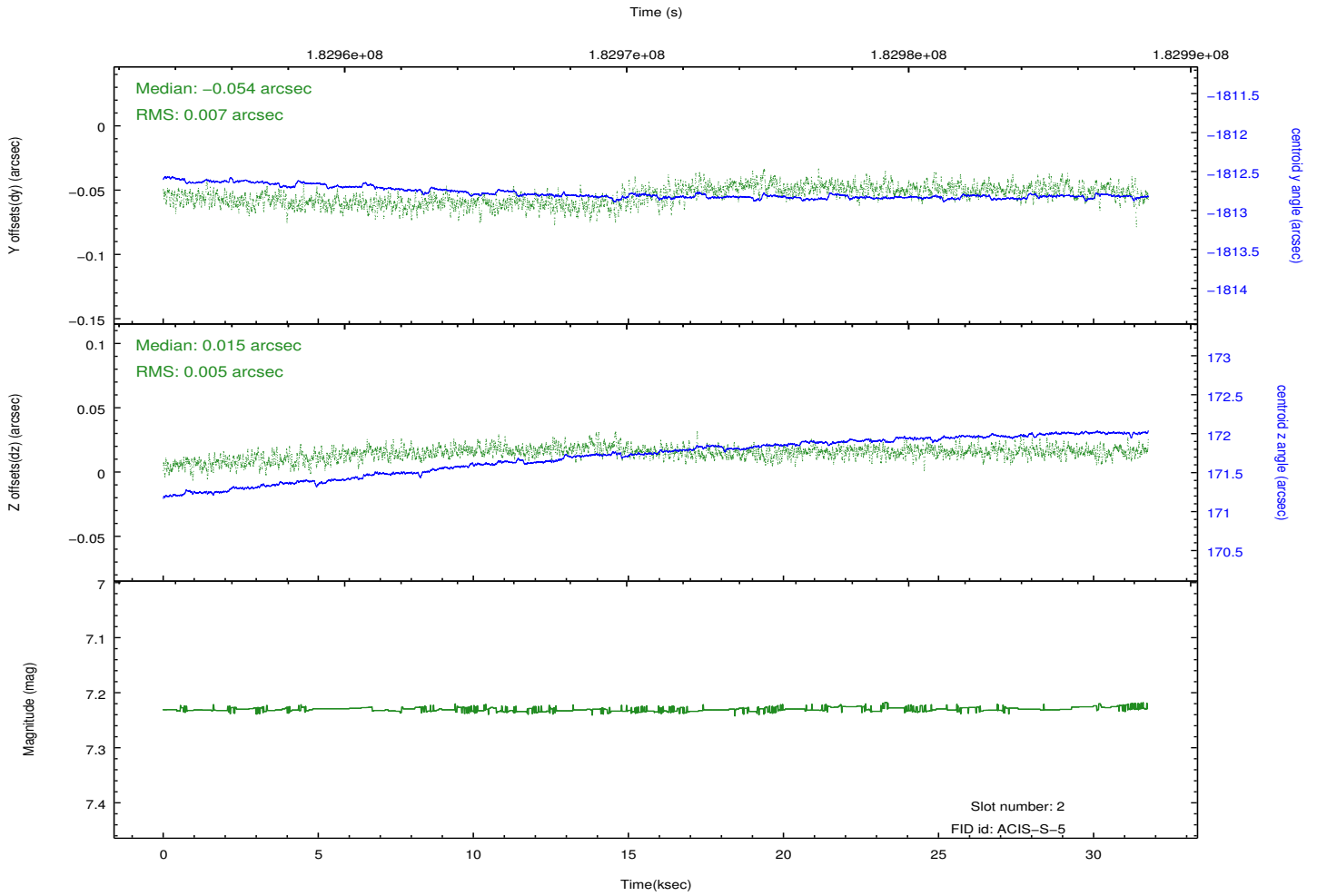
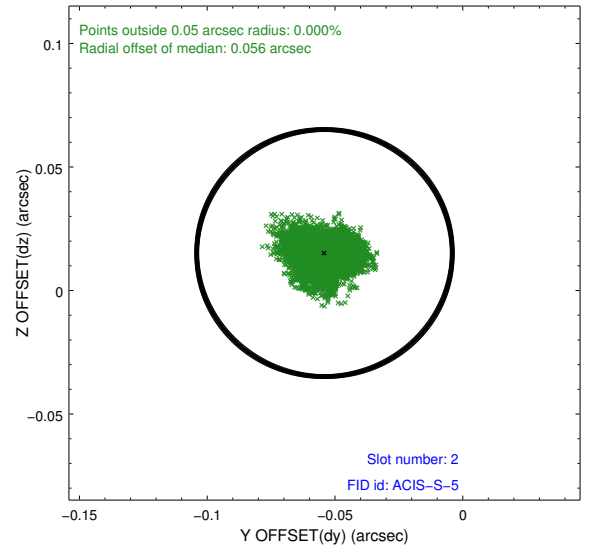
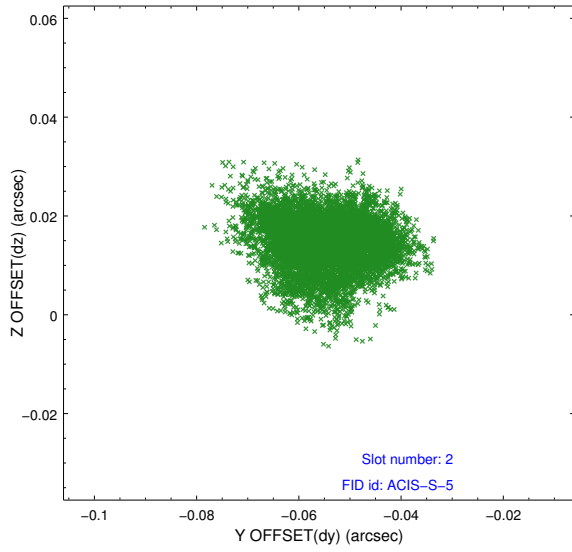
2.5.1 Slot 0



2.5.2 Slot 1



2.5.3 Slot 2



A Summary

A.1 Status

V&V Scientist	Beth Sundheim
V&V Date (YYYY-MM-DD)	2012.11.26
V&V Edition	1
V&V Disposition and Status	OK
V&V Charge Time	31.753

A.2 Comments