

V&V Reference Report

L2 ASCDS Version : 8.4.5

Observation 3800 - L2 Version 3
Chandra X-Ray Center

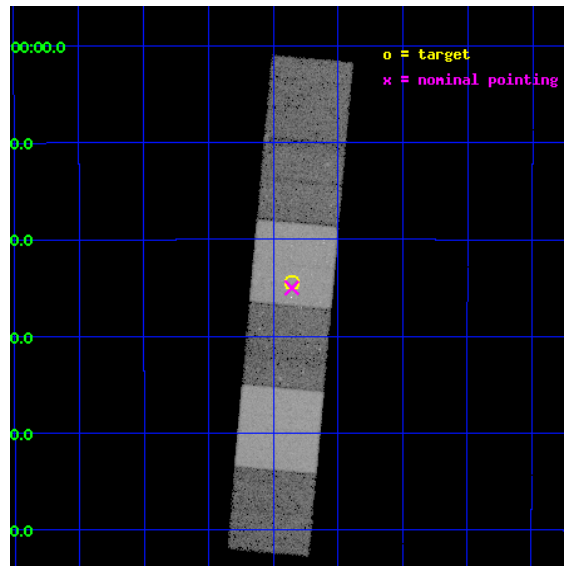
L2 Processing Date : Oct 17 2012

Contents

1	Front	2
2	OBI	3
2.1	OBI	3
2.1.1	Images	3
2.1.2	Bias	3
2.1.3	Parameters	4
2.1.4	Events	4
2.2	Compared Parameters	5
2.3	Aspect	6
2.4	Star Slots	9
2.4.1	Slot 3	9
2.4.2	Slot 4	10
2.4.3	Slot 5	11
2.4.4	Slot 6	12
2.4.5	Slot 7	13
2.5	FID Slots	14
2.5.1	Slot 0	14
2.5.2	Slot 1	15
2.5.3	Slot 2	16
A	Summary	17
A.1	Status	17
A.2	Comments	17

1 Front

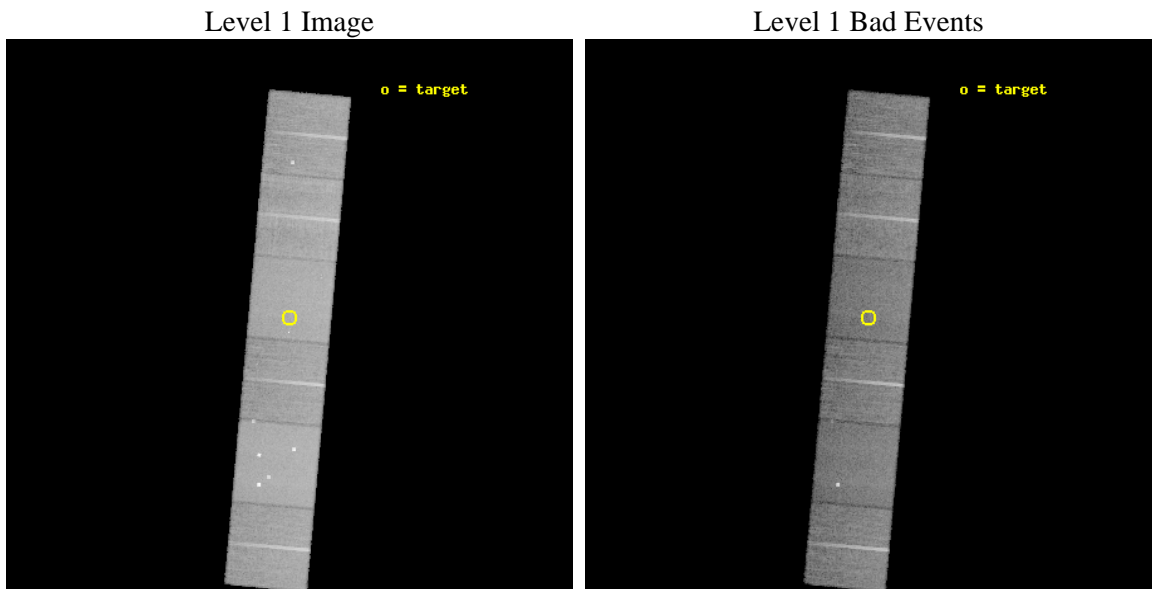
seq_num	400287	Sequence number
obs_id	3800	Observation id
title	A SEARCH FOR X-RAY JETS IN QUIESCENT MICROQUASARS	Proposal title
observer	Dr. John Tomsick	Principal investigator
object	V4641 SGR	Source name
dtycycle	0	
cycle	P	events from which exps? Prim/Second/Both
ra_targ	274.84	Observer's specified target RA [deg]
dec_targ	-25.407111	Observer's specified target Dec [deg]
ra_nom	274.83906814618	Nominal RA [deg]
dec_nom	-25.416762342011	Nominal Dec [deg]
roll_nom	275.15623503766	Nominal Roll [deg]
revision	3	Processing version of data
ontime	25580.799904704	Sum of GTIs [s]
liveltime	25256.880413402	Livetime [s]
ontime4	25577.558944404	Sum of GTIs [s]
ontime5	25580.799904704	Sum of GTIs [s]
ontime6	25580.799904704	Sum of GTIs [s]
ontime7	25580.799904704	Sum of GTIs [s]
ontime8	25577.546142071	Sum of GTIs [s]
ontime9	25580.746062368	Sum of GTIs [s]
l2events	270930	Number of level 2 events



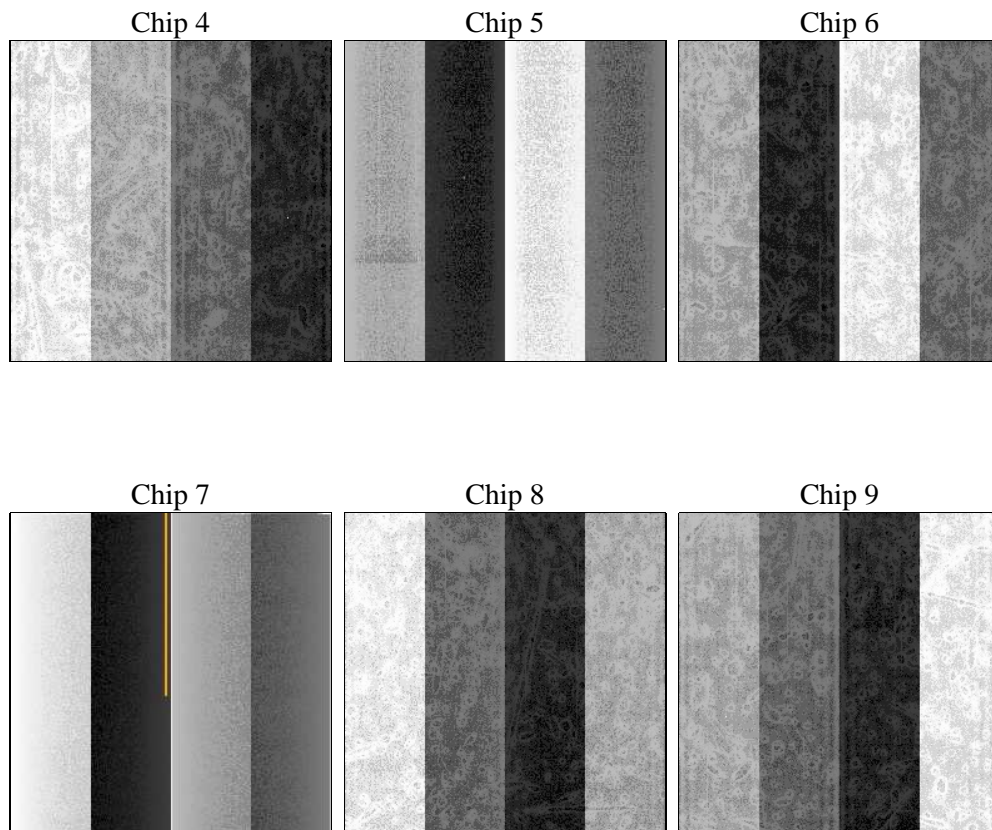
2 OBI

2.1 OBI

2.1.1 Images



2.1.2 Bias



2.1.3 Parameters

obi_num	0	Obi number	sched_exp_time	25620.000000	[s] Scheduled observation exposure time
ascdsver	8.4.5	Processing system revision	ontime	25580.799904704	Sum of GTIs [s]
caldsver	4.5.2	 	ontime4	25577.558944404	Sum of GTIs [s]
date	2012-10-17T00:18:46	Date and time of file creation	ontime5	25580.799904704	Sum of GTIs [s]
revision	3	Processing version of data	ontime6	25580.799904704	Sum of GTIs [s]
			ontime7	25580.799904704	Sum of GTIs [s]
			ontime8	25577.546142071	Sum of GTIs [s]
			ontime9	25580.746062368	Sum of GTIs [s]
			l1events	1148492	Number of level 1 events

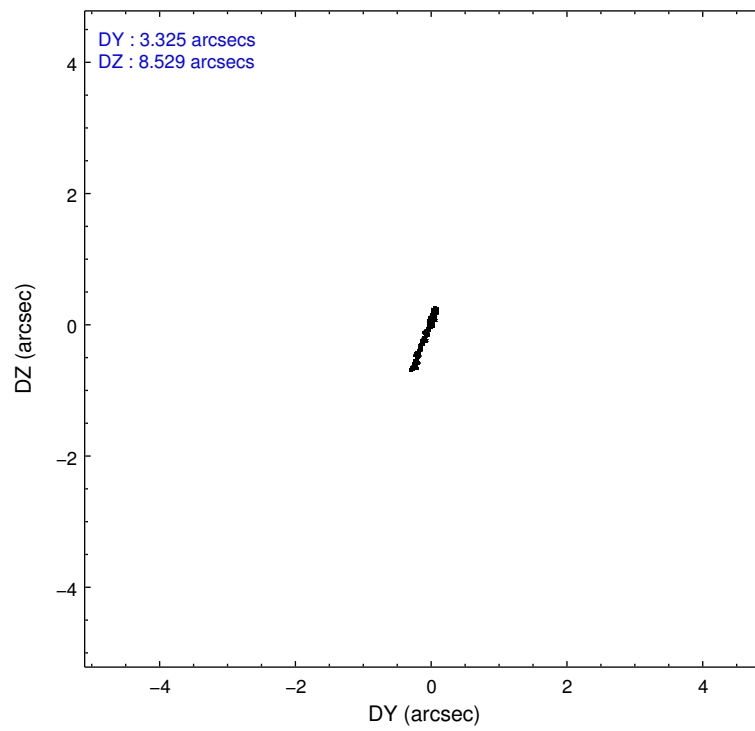
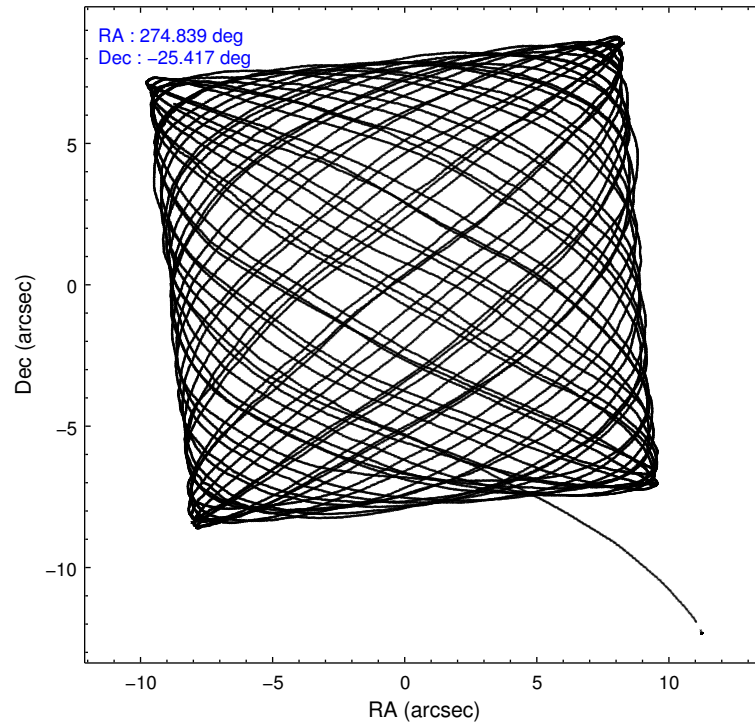
2.1.4 Events

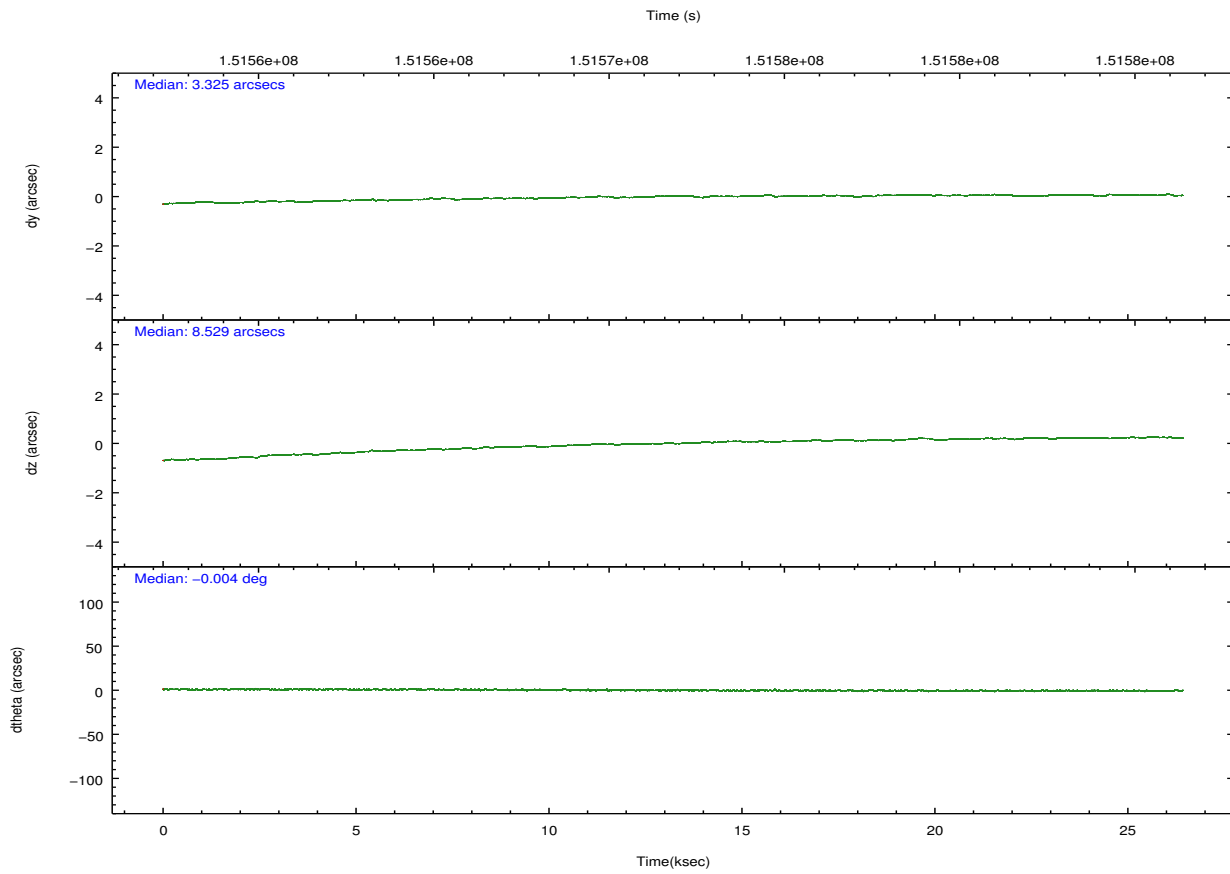
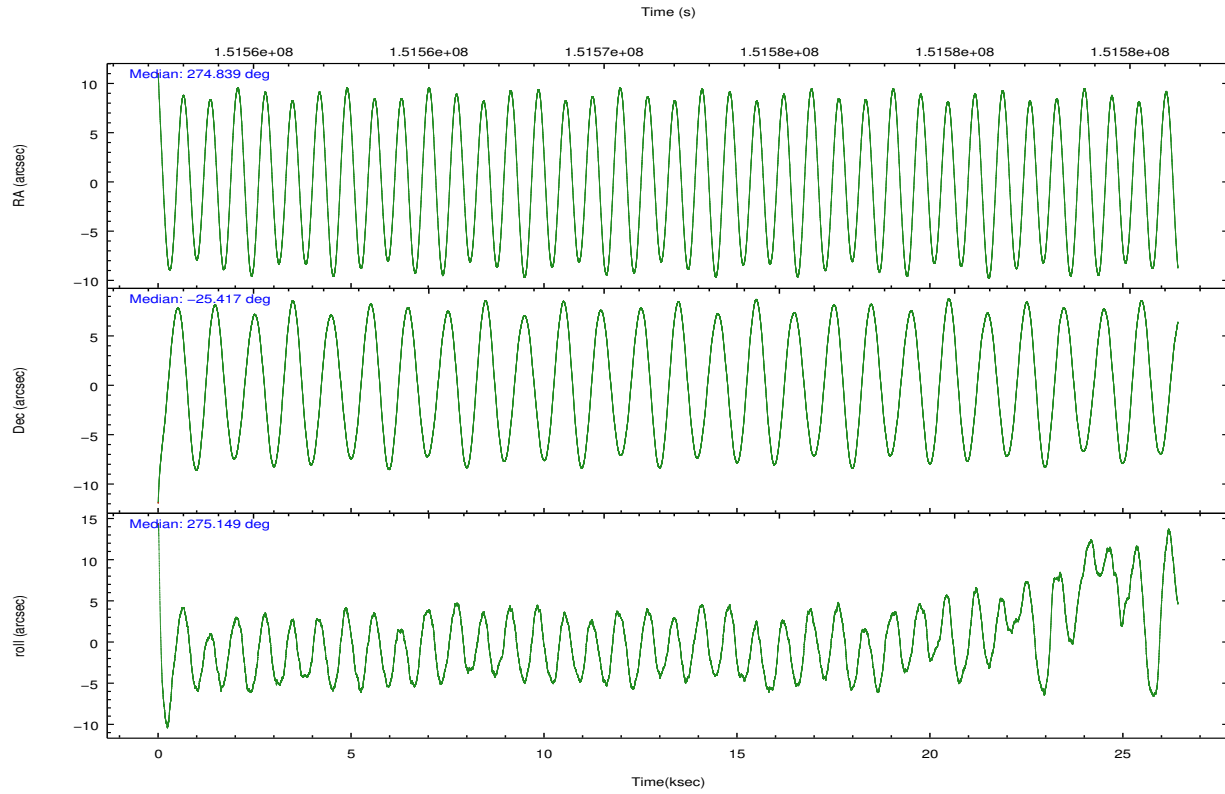
	ccd 4	ccd 5	ccd 6	ccd 7	ccd 8	ccd 9		ccd 4	ccd 5	ccd 6	ccd 7	ccd 8	ccd 9
level 1 events	170483	242182	161610	211722	201994	160501	grade 0 events	10525	19037	10993	10143	16747	11745
rejected events	148794	124424	138757	118727	156447	137369		6%	7%	6%	4%	8%	7%
rejected %	87%	51%	85%	56%	77%	85%	grade 1 events	172	392	84	189	142	93
								0%	0%	0%	0%	0%	0%
							grade 2 events	4202	32074	4209	18794	9246	3878
								2%	13%	2%	8%	4%	2%
							grade 3 events	2007	7710	2020	8439	4515	1981
								1%	3%	1%	3%	2%	1%
							grade 4 events	1960	4692	1917	8523	4273	1859
								1%	1%	1%	4%	2%	1%
							grade 5 events	6588	18898	6888	19343	9051	7283
								3%	7%	4%	9%	4%	4%
							grade 6 events	2998	54262	3716	47103	10772	3670
								1%	22%	2%	22%	5%	2%
							grade 7 events	142031	105117	131783	99188	147248	129992
								83%	43%	81%	46%	72%	80%

2.2 Compared Parameters

Parameter	Planned	Actual	Parameter	Planned	Actual
Instrument	ACIS	ACIS	Obspar format version number	7	7
Detector	ACIS-456789	ACIS-456789	Obspar file type	PREDICTED	ACTUAL
Grating	NONE	NONE	Obspar update status	NONE	UPDATED
Data mode	FAINT	FAINT	Number of optional ACIS chips dropped	0	0
Observation mode	POINTING	POINTING	On-chip summing requested	N	N
[deg] Pointing RA	274.821389	274.8390681461825	Subarray requested	NONE	NONE
[deg] Pointing Dec	-25.394692	-25.41676234201134	Alternating exposures requested	N	N
[deg] Pointing Roll	274.992019	275.1562350376623	[s] Primary exposure time	0.000000	3.2
[mm] SIM focus pos	-0.684267	-0.6828225247311905			
[mm] SIM defocus	0	0.001444936568705701			
[mm] SIM translation stage pos	-190.132523	-190.1425803651734			
[mm] SIM translation stage offset	0	0.01005778216563158			
[s] Observation start time (MET)	151559415.184000	151558148.10866			
Observation start date	2002-10-21T03:49:11	2002-10-21T03:29:08			
[s] Observation end time (MET)	151585035.184000	151585433.60979			
Observation end date	2002-10-21T10:56:11	2002-10-21T11:03:53			
Read mode	TIMED	TIMED			

2.3 Aspect



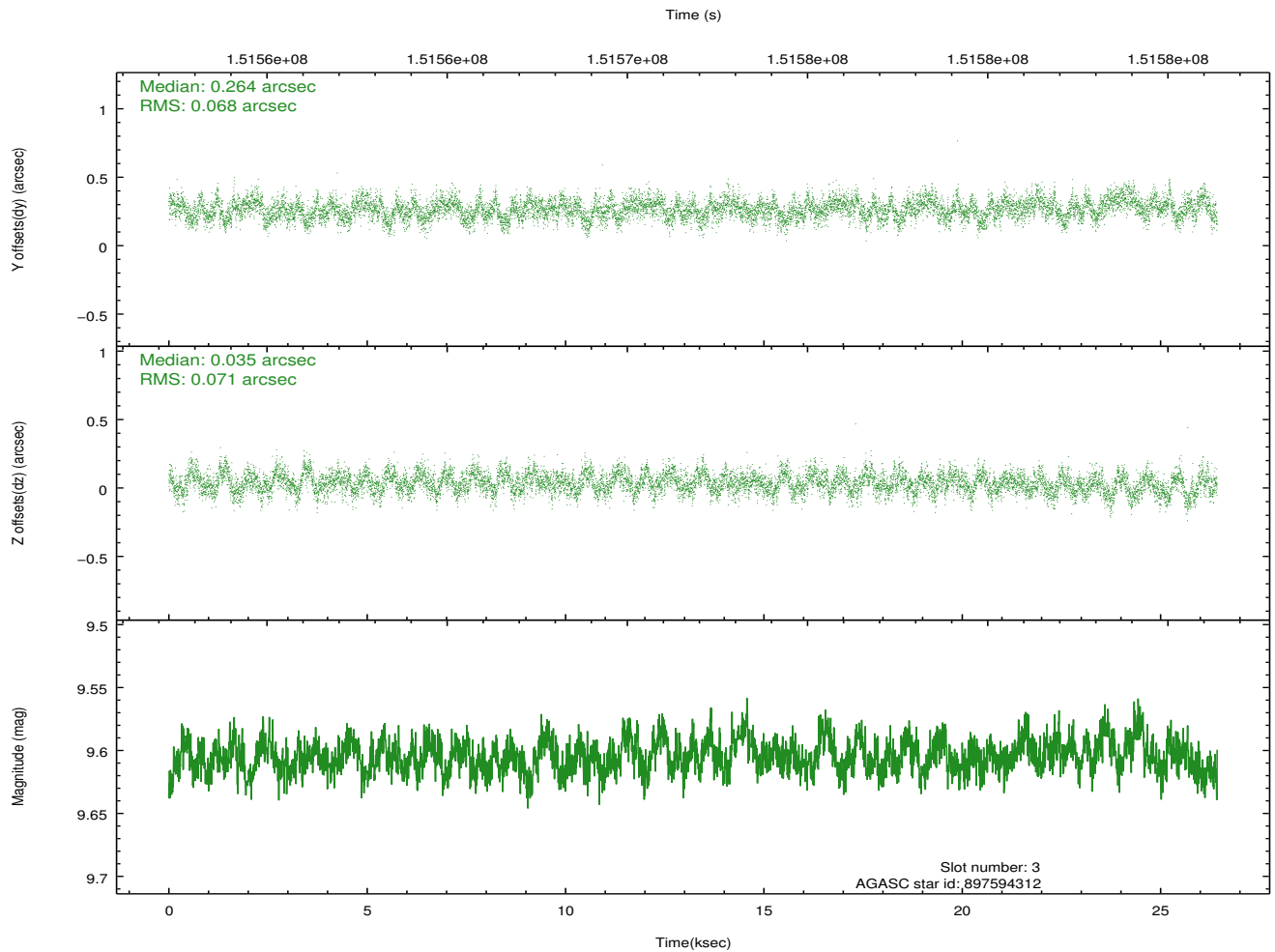
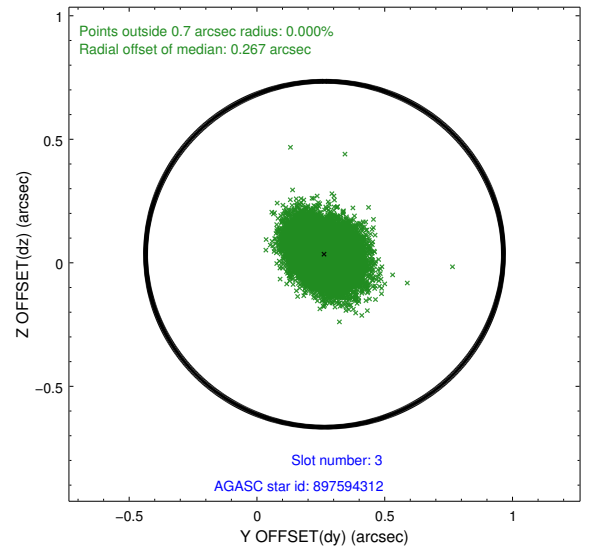
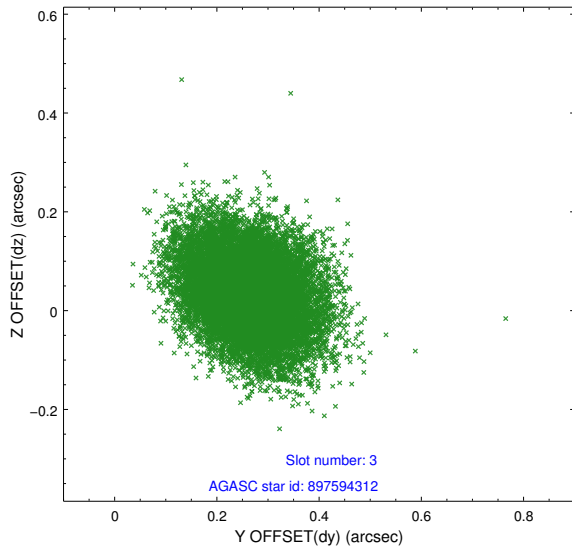


Slot Statistics

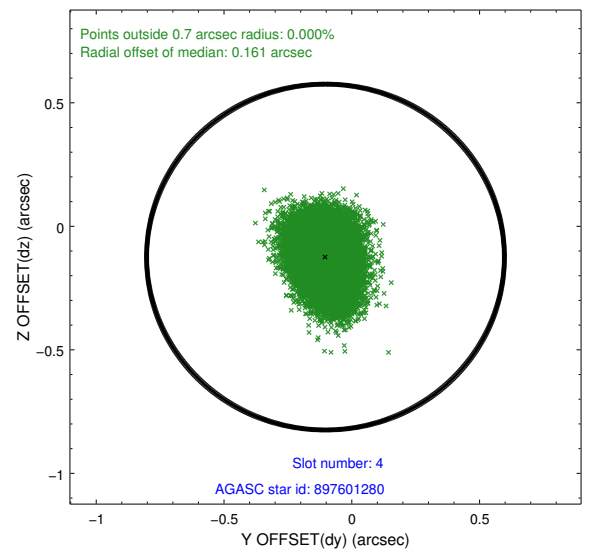
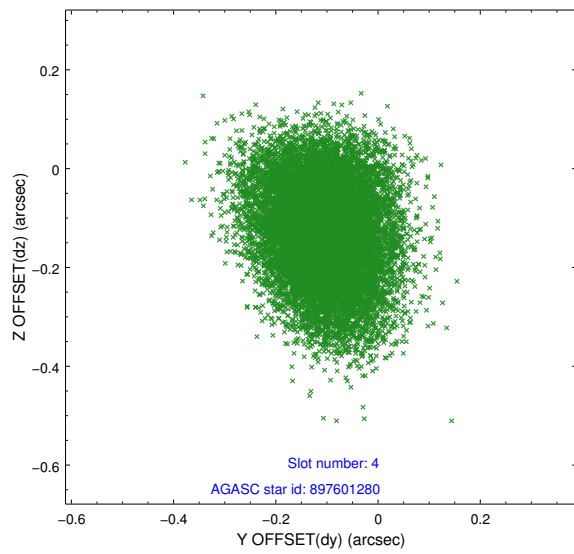
slot	status	id	mag	n_pts	med_dy	med_dz	dr1	dr2	ra	dec	mean_y	mean_z
0	FID	ACIS-S-2	7.11	6446	-0.014	-0.015	0.008	0.013	0.000000	0.000000	-755.95	-1729.62
1	FID	ACIS-S-4	7.20	6446	0.007	0.011	0.009	0.016	0.000000	0.000000	2157.31	178.77
2	FID	ACIS-S-5	7.24	6446	-0.024	0.013	0.007	0.013	0.000000	0.000000	-1808.66	172.57
3	GUIDE	897594312	9.61	12884	0.264	0.035	0.104	0.169	275.203948	-25.744625	1364.67	1126.72
4	GUIDE	897601280	9.69	12872	-0.103	-0.124	0.126	0.204	274.221964	-25.156854	-1018.55	-1871.43
5	GUIDE	897607632	9.10	12811	-0.040	0.002	0.105	0.201	275.528210	-25.239953	-349.17	2341.06
6	GUIDE	897607664	8.95	12884	-0.003	0.021	0.088	0.142	274.763984	-25.327976	-255.43	-164.54
7	GUIDE	897610120	8.48	12820	-0.114	0.066	0.072	0.115	275.375820	-25.427247	276.84	1785.77

2.4 Star Slots

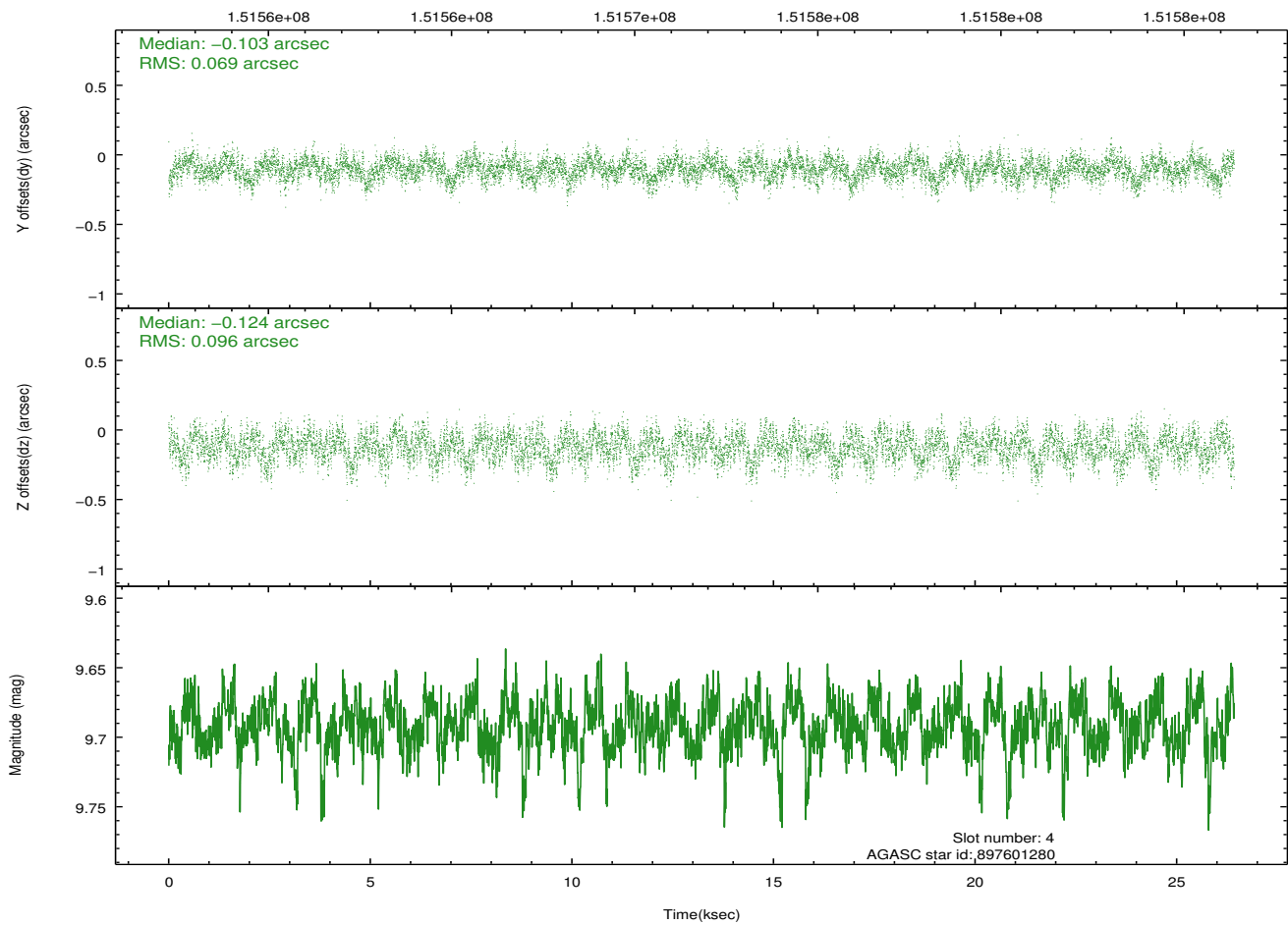
2.4.1 Slot 3



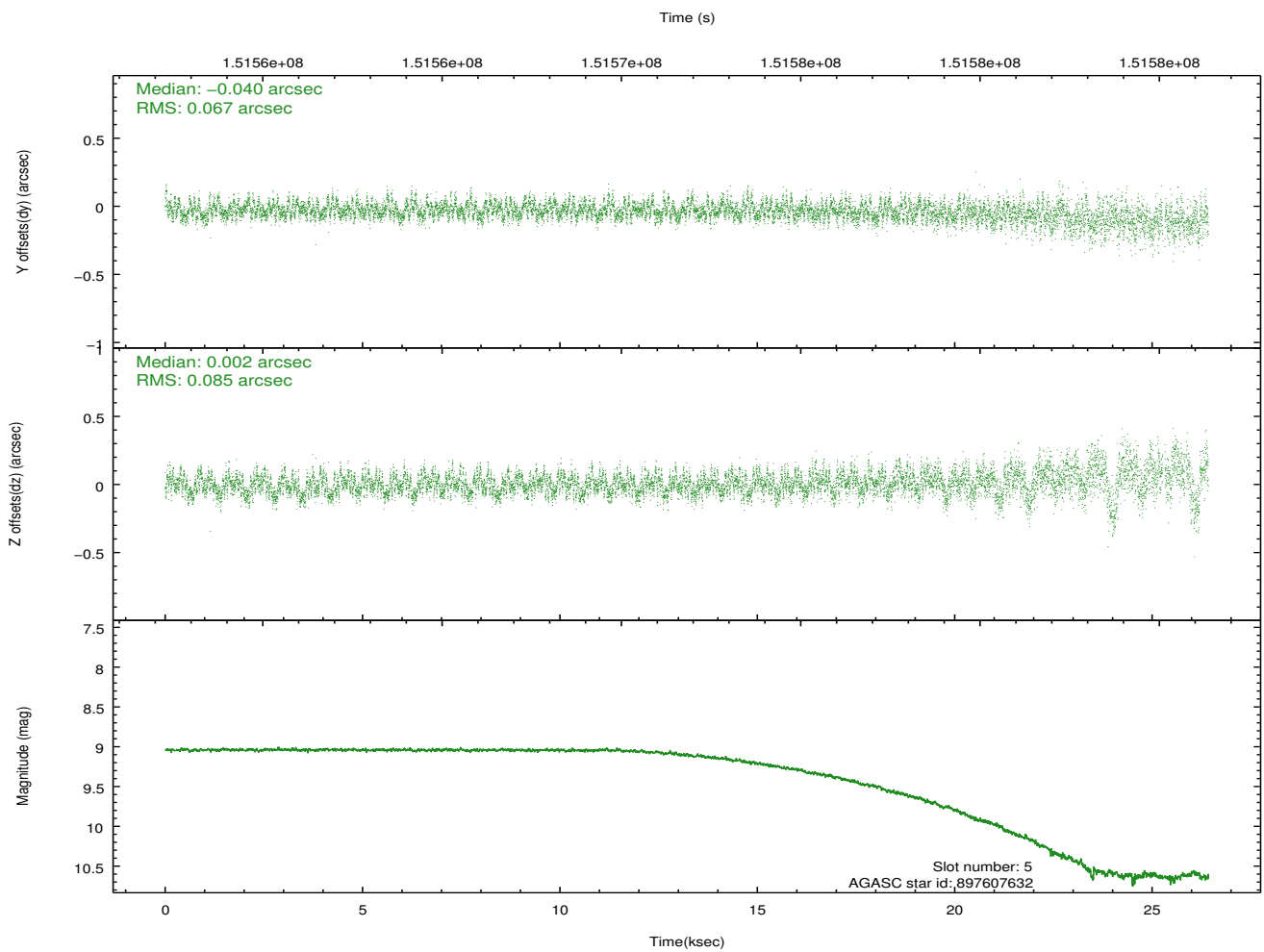
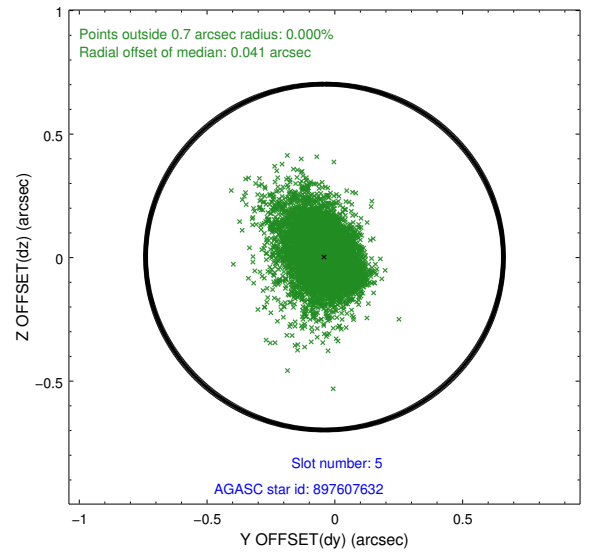
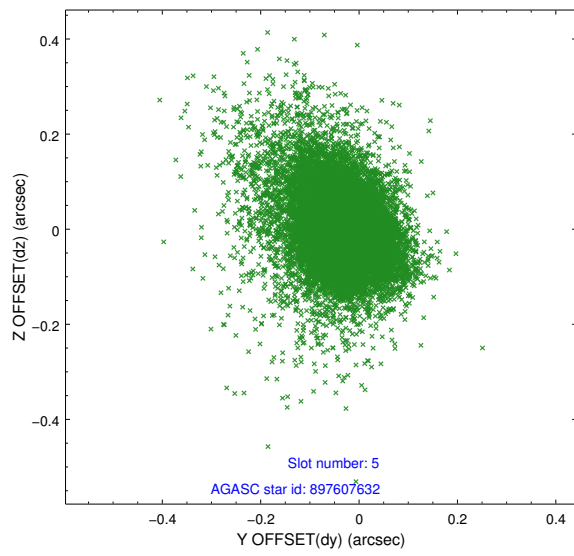
2.4.2 Slot 4



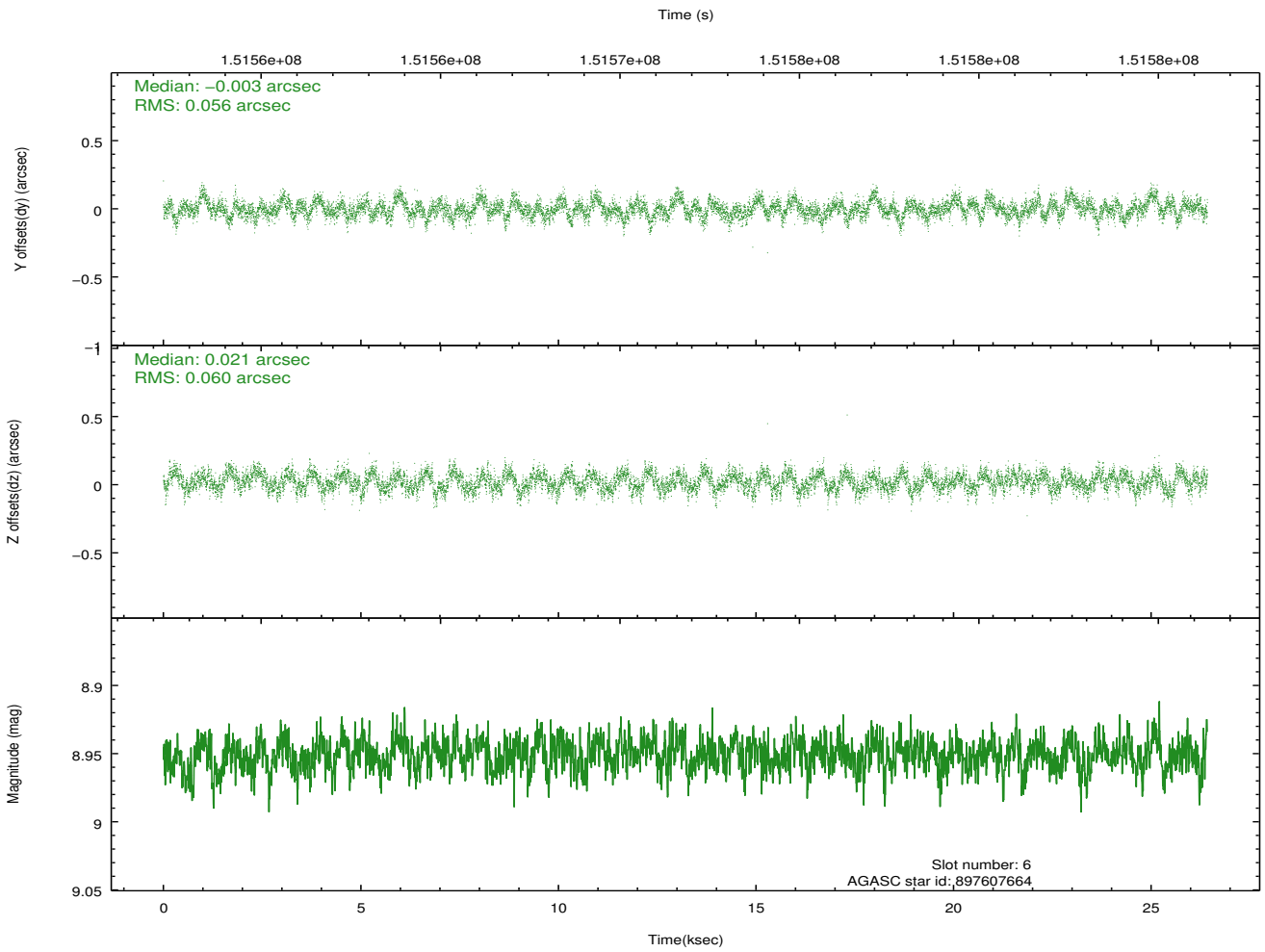
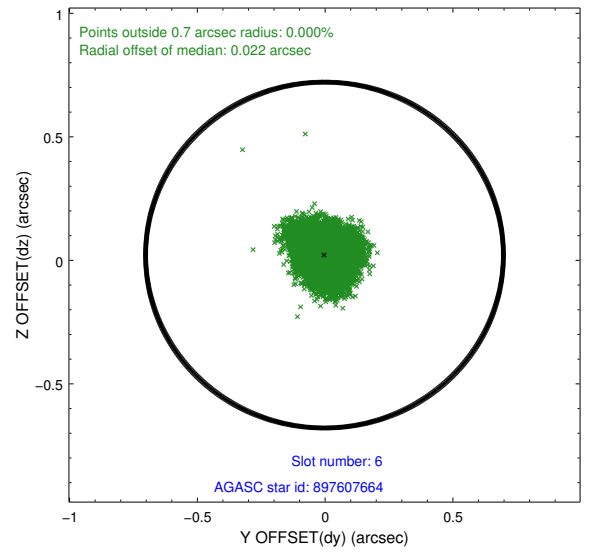
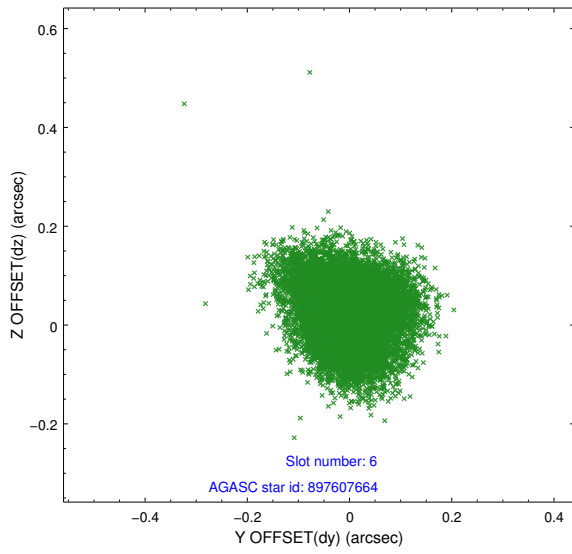
Time (s)



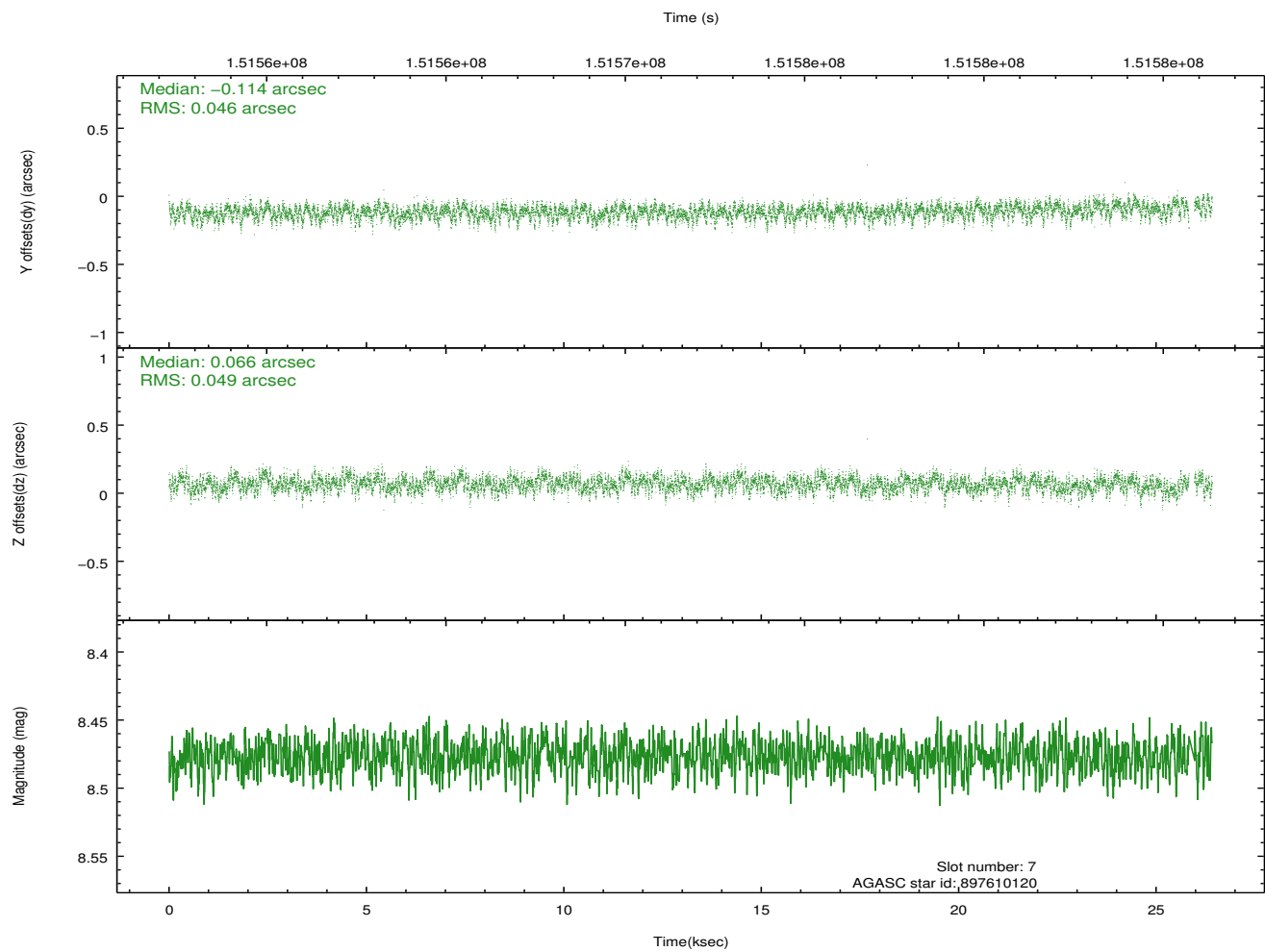
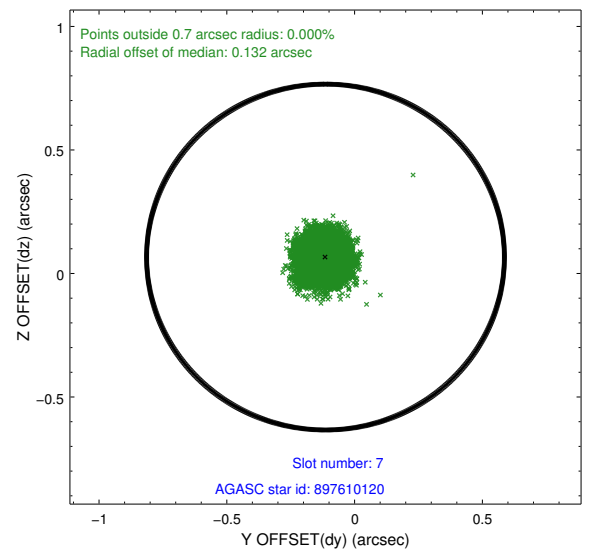
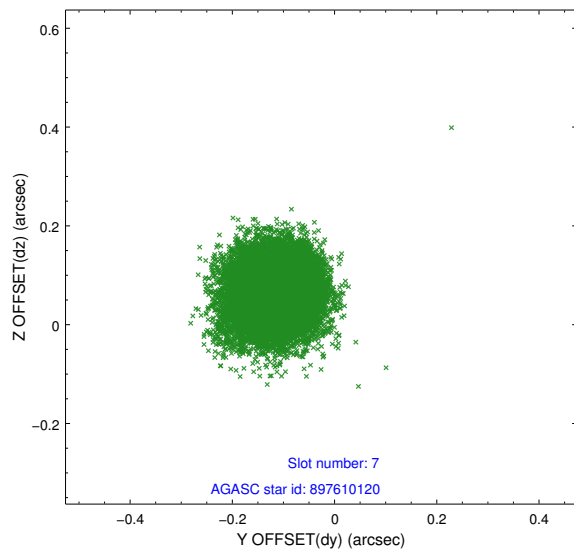
2.4.3 Slot 5



2.4.4 Slot 6

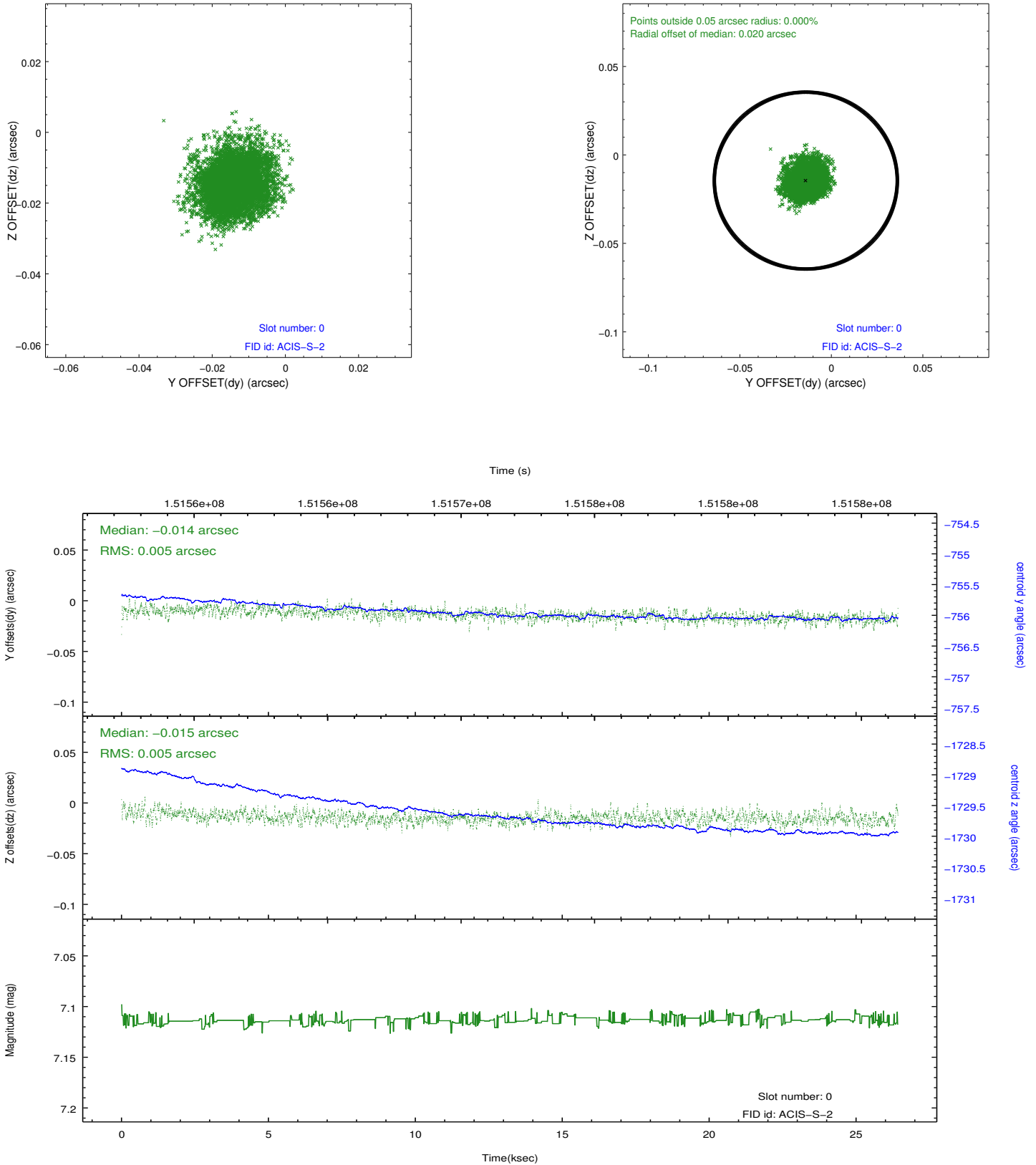


2.4.5 Slot 7

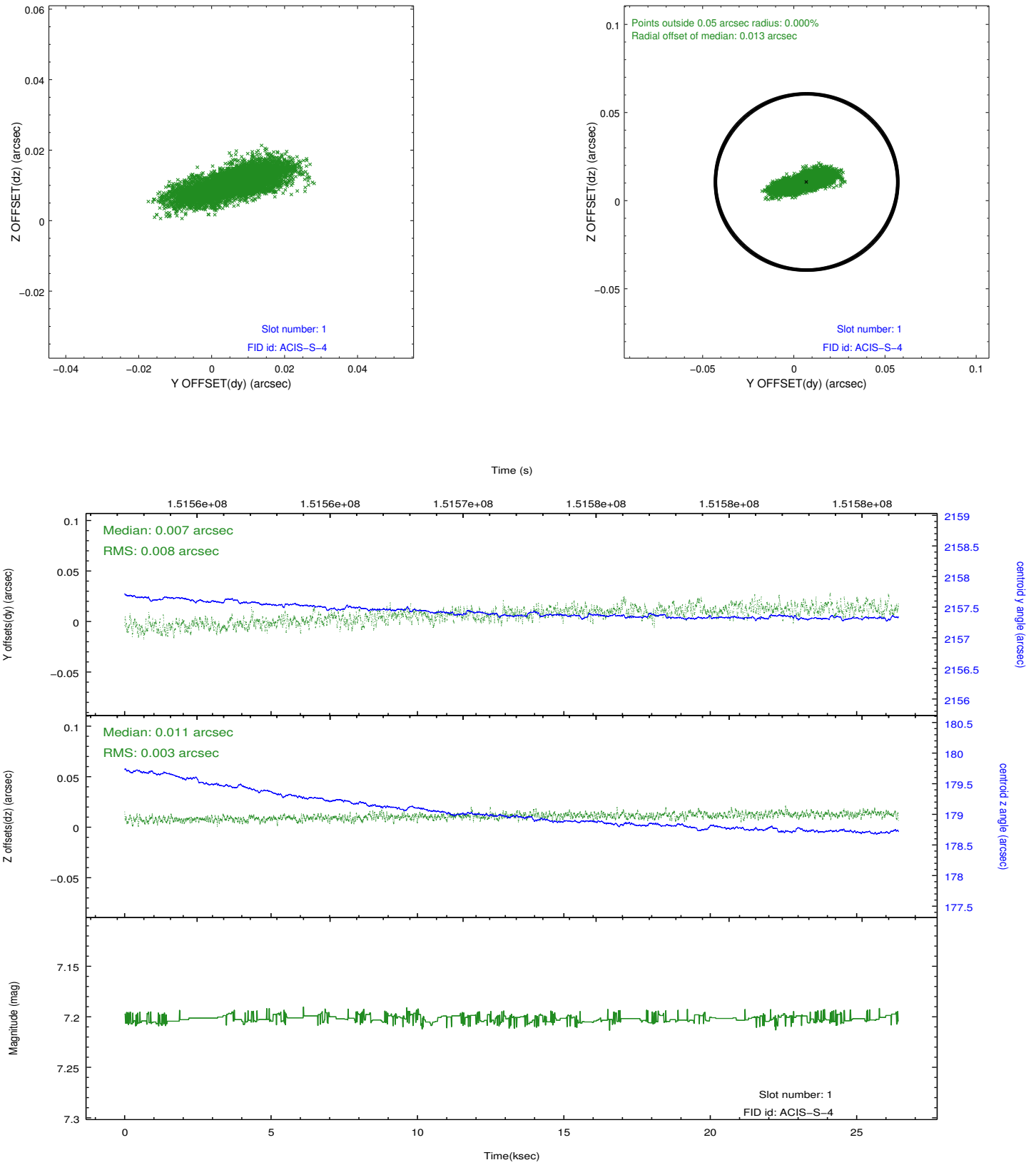


2.5 FID Slots

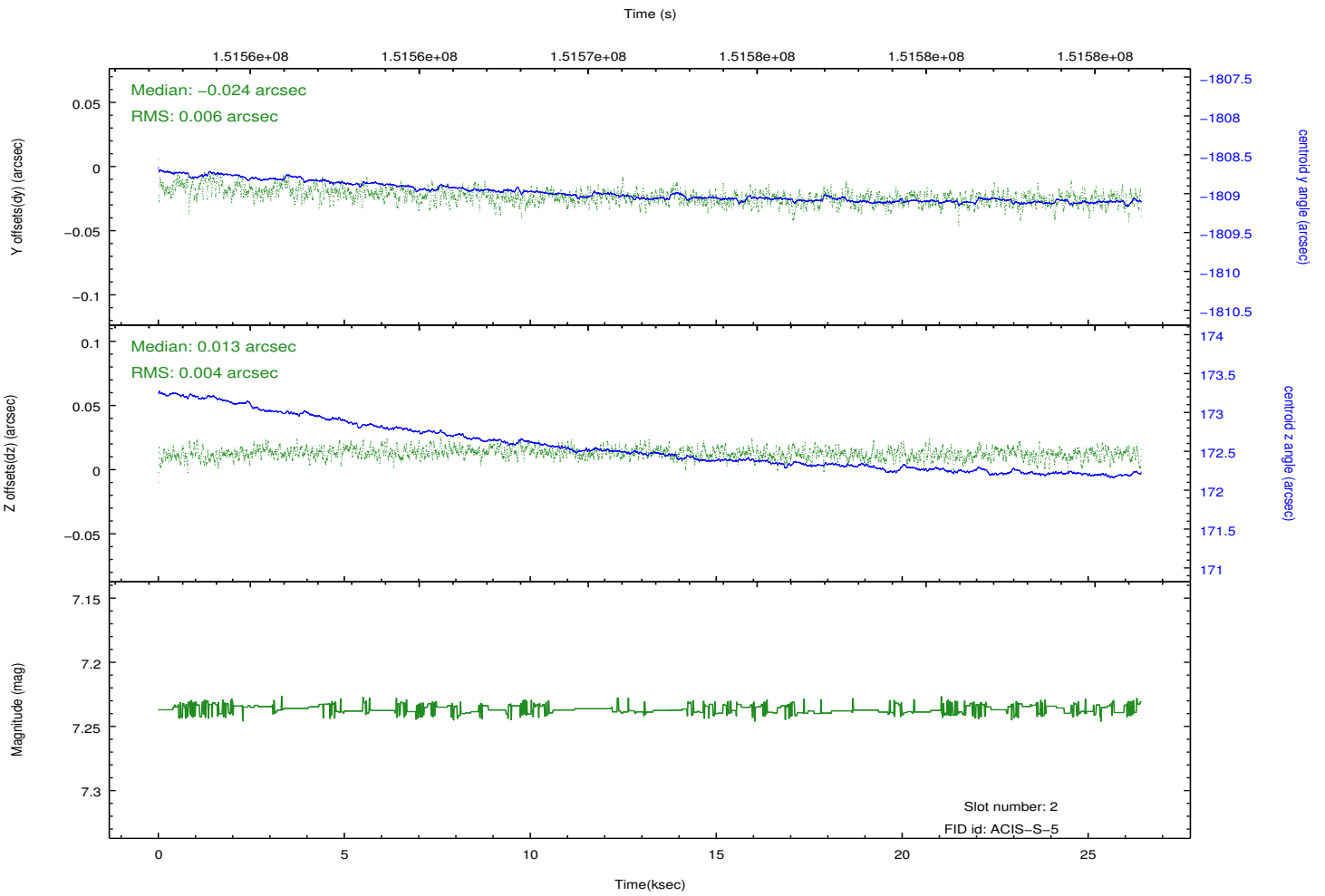
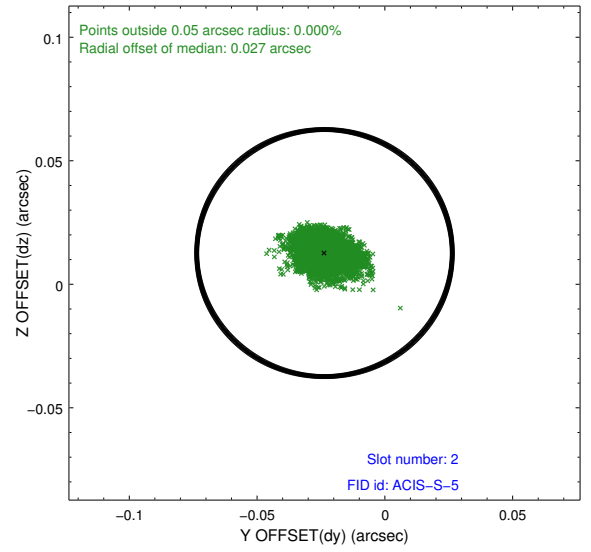
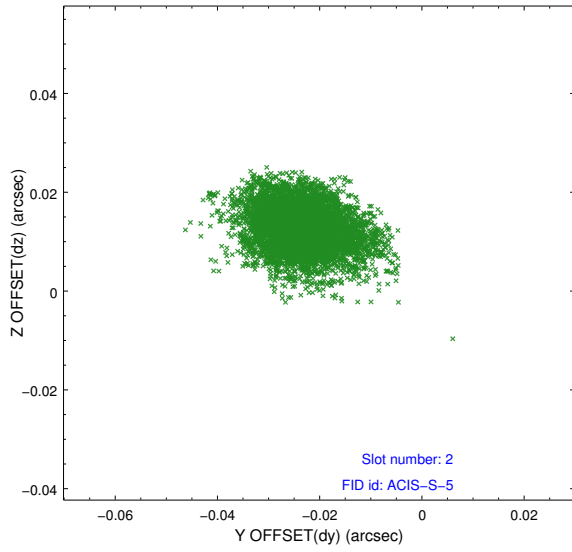
2.5.1 Slot 0



2.5.2 Slot 1



2.5.3 Slot 2



A Summary

A.1 Status

V&V Scientist	Jen Lauer
V&V Date (YYYY-MM-DD)	2012.10.25
V&V Edition	1
V&V Disposition and Status	OK
V&V Charge Time	25.583

A.2 Comments

Window preference met. Roll preference met.