

# V&V Reference Report

## L2 ASCDS Version : 8.4.5

Observation 3900 - L2 Version 3  
Chandra X-Ray Center

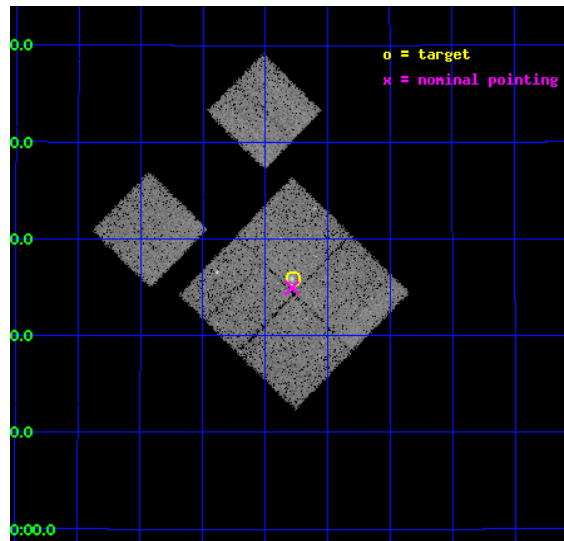
L2 Processing Date : Oct 18 2012

## Contents

<b>1</b>	<b>Front</b>	<b>2</b>
<b>2</b>	<b>OBI</b>	<b>3</b>
2.1	OBI . . . . .	3
2.1.1	Images . . . . .	3
2.1.2	Bias . . . . .	3
2.1.3	Parameters . . . . .	4
2.1.4	Events . . . . .	4
2.2	Compared Parameters . . . . .	5
2.3	Aspect . . . . .	6
2.4	Star Slots . . . . .	9
2.4.1	Slot 3 . . . . .	9
2.4.2	Slot 4 . . . . .	10
2.4.3	Slot 5 . . . . .	11
2.4.4	Slot 6 . . . . .	12
2.4.5	Slot 7 . . . . .	13
2.5	FID Slots . . . . .	14
2.5.1	Slot 0 . . . . .	14
2.5.2	Slot 1 . . . . .	15
2.5.3	Slot 2 . . . . .	16
<b>A</b>	<b>Summary</b>	<b>17</b>
A.1	Status . . . . .	17
A.2	Comments . . . . .	17

# 1 Front

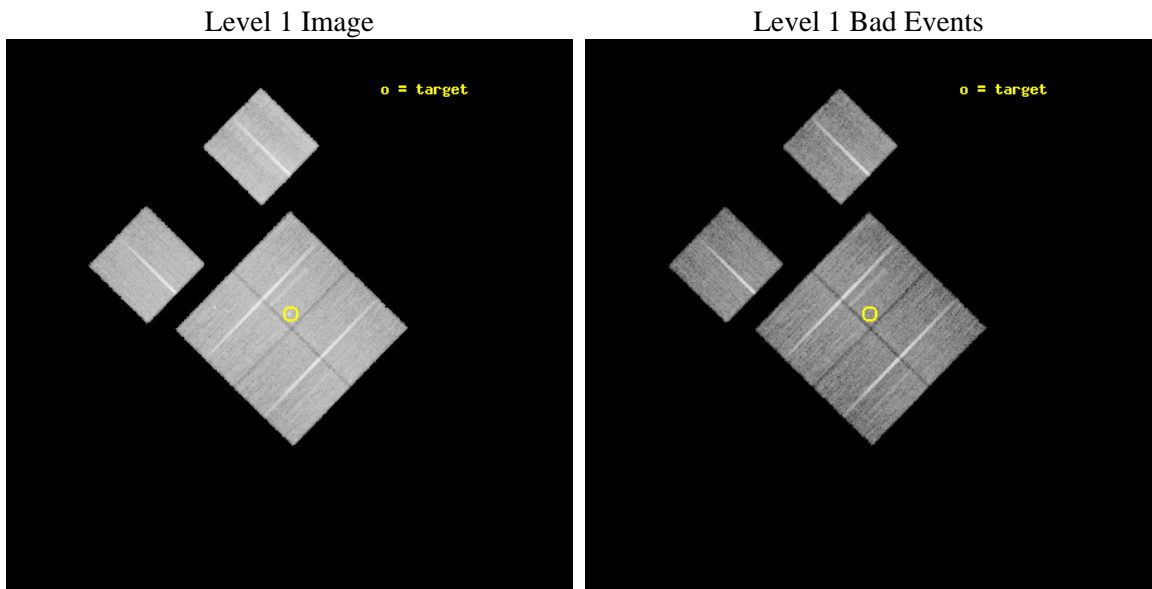
seq_num	500379	Sequence number
obs_id	3900	Observation id
title	PLERIONS WITH HOLES? THE UNUSUAL SUPERNOVA REMNANTS DA 495 AND G76.9+1.0	Proposal title
observer	Zaven Arzoumanian	Principal investigator
object	DA 495	Source name
dtcycle	0	&#160
cycle	P	events from which exps? Prim/Second/Both
ra_targ	298.07	Observer's specified target RA [deg]
dec_targ	29.432	Observer's specified target Dec [deg]
ra_nom	298.07171525077	Nominal RA [deg]
dec_nom	29.415885867786	Nominal Dec [deg]
roll_nom	314.32371521604	Nominal Roll [deg]
revision	3	Processing version of data
ontime	25161.599906266	Sum of GTIs [s]
livetime	24842.988577756	Livetime [s]
ontime0	25161.599906266	Sum of GTIs [s]
ontime1	25161.599906266	Sum of GTIs [s]
ontime2	25161.599906266	Sum of GTIs [s]
ontime3	25161.599906266	Sum of GTIs [s]
ontime6	25158.358886153	Sum of GTIs [s]
ontime8	25155.117925882	Sum of GTIs [s]
l2events	75031	Number of level 2 events



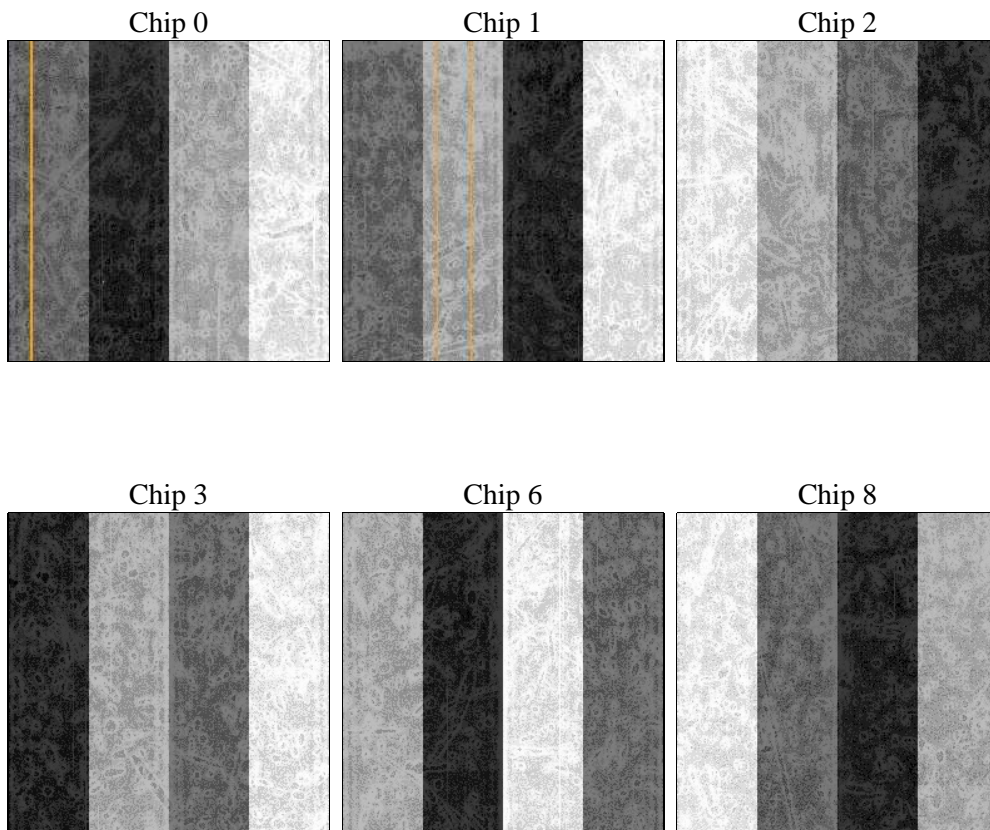
## 2 OBI

### 2.1 OBI

#### 2.1.1 Images



#### 2.1.2 Bias



### 2.1.3 Parameters

obi_num	0	Obi number	sched_exp_time	25000.000000	[s] Scheduled observation exposure time
ascdsver	8.4.5	Processing system revision	ontime	25161.599906266	Sum of GTIs [s]
caldsver	4.5.2	&#160	ontime0	25161.599906266	Sum of GTIs [s]
date	2012-10-18T14:07:37	Date and time of file creation	ontime1	25161.599906266	Sum of GTIs [s]
revision	3	Processing version of data	ontime2	25161.599906266	Sum of GTIs [s]
			ontime3	25161.599906266	Sum of GTIs [s]
			ontime6	25158.358886153	Sum of GTIs [s]
			ontime8	25155.117925882	Sum of GTIs [s]
			l1events	852241	Number of level 1 events

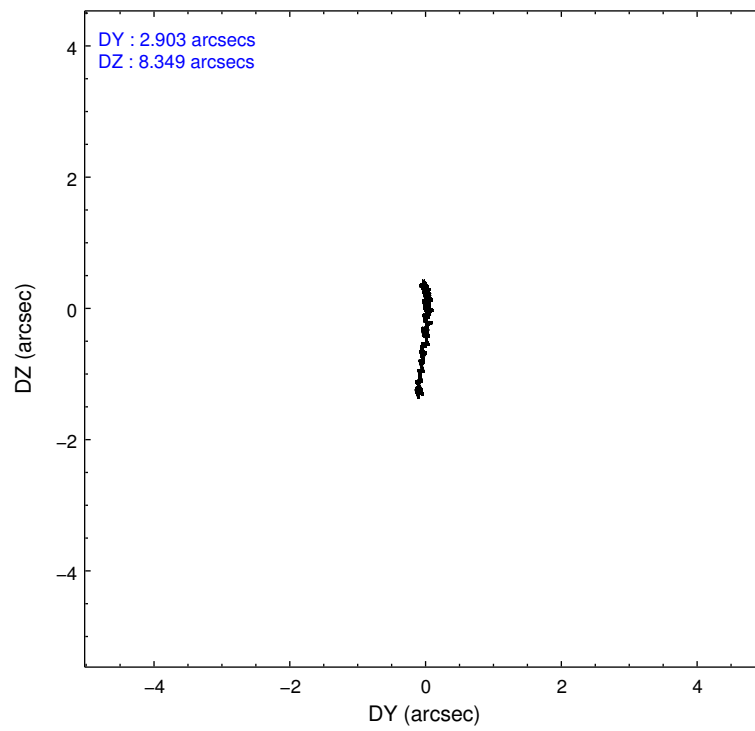
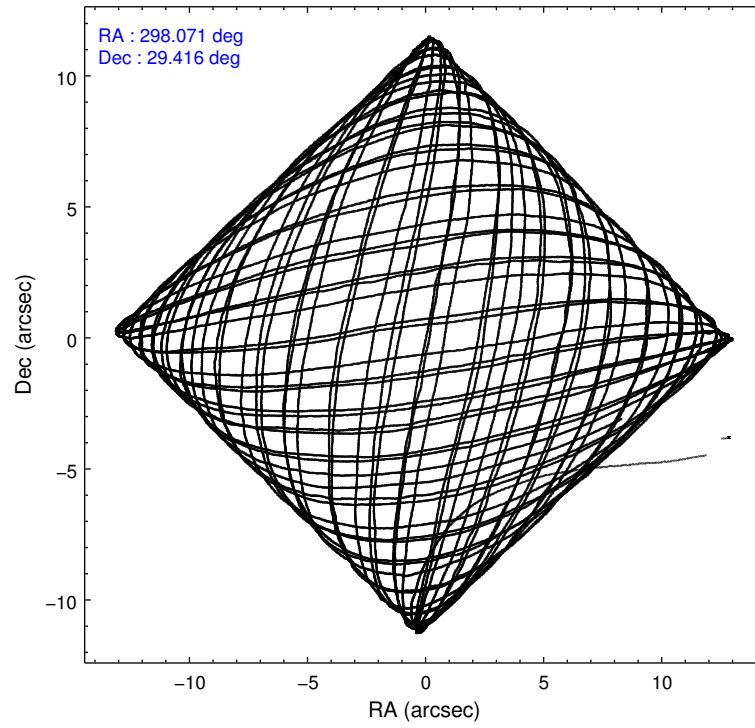
### 2.1.4 Events

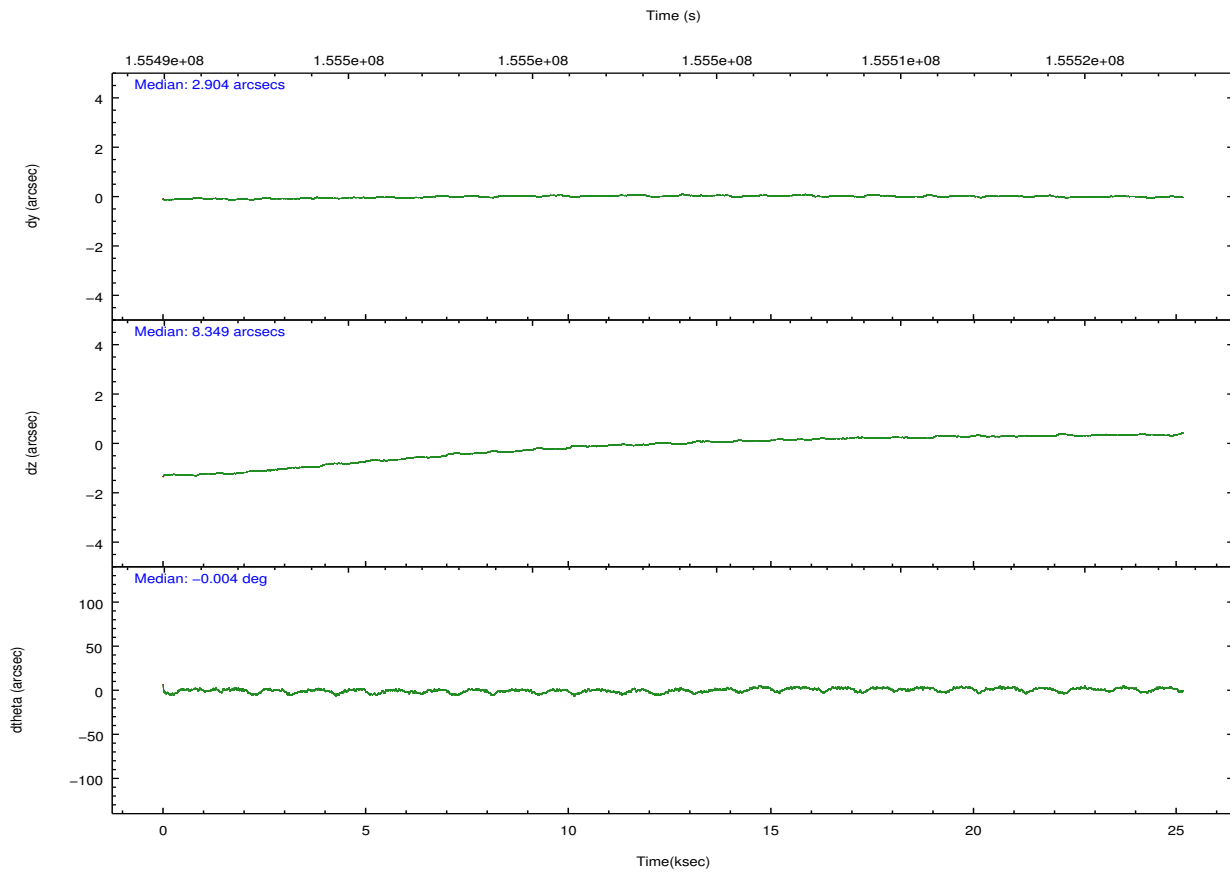
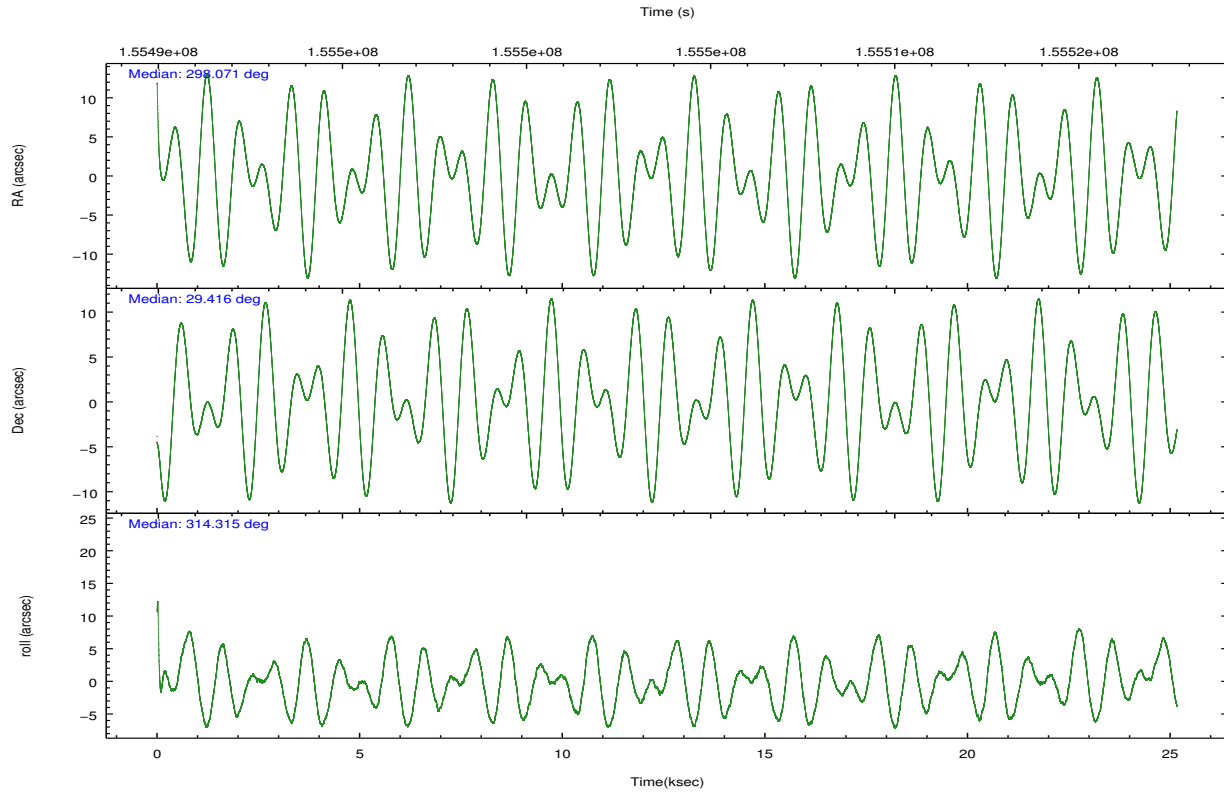
	ccd 0	ccd 1	ccd 2	ccd 3	ccd 6	ccd 8		ccd 0	ccd 1	ccd 2	ccd 3	ccd 6	ccd 8
level 1 events	126047	127534	145506	139699	135984	177471	grade 0 events	5373	6388	6045	6299	4999	11545
rejected events	111879	111650	131009	124964	122242	138730		4%	5%	4%	4%	3%	6%
rejected %	88%	87%	90%	89%	89%	78%	grade 1 events	70	72	75	76	48	126
								0%	0%	0%	0%	0%	0%
							grade 2 events	3126	3165	3030	2905	2805	8555
								2%	2%	2%	2%	2%	4%
							grade 3 events	1710	1749	1475	1573	1544	4171
								1%	1%	1%	1%	1%	2%
							grade 4 events	1483	1654	1510	1518	1560	3903
								1%	1%	1%	1%	1%	2%
							grade 5 events	4581	4855	4371	5218	5040	7499
								3%	3%	3%	3%	3%	4%
							grade 6 events	2483	2942	2449	2451	2839	10609
								1%	2%	1%	1%	2%	5%
							grade 7 events	107221	106709	126551	119659	117149	131063
								85%	83%	86%	85%	86%	73%

## 2.2 Compared Parameters

Parameter	Planned	Actual	Parameter	Planned	Actual
Instrument	ACIS	ACIS	Obspar format version number	7	7
Detector	ACIS-012368	ACIS-012368	Obspar file type	PREDICTED	ACTUAL
Grating	NONE	NONE	Obspar update status	NONE	UPDATED
Data mode	VFAINT	VFAINT	Number of optional ACIS chips dropped	0	0
Observation mode	POINTING	POINTING	On-chip summing requested	N	N
[deg] Pointing RA	298.041423	298.0717152507653	Subarray requested	NONE	NONE
[deg] Pointing Dec	29.423191	29.41588586778572	Alternating exposures requested	N	N
[deg] Pointing Roll	314.129899	314.3237152160382	[s] Primary exposure time	0.000000	3.2
[mm] SIM focus pos	-0.782348	-0.7809083437167272			
[mm] SIM defocus	0	0.001439871863259334			
[mm] SIM translation stage pos	-233.592463	-233.5874344608287			
[mm] SIM translation stage offset	0	-0.005018542100998502			
[s] Observation start time (MET)	155491401.184000	155490338.34727			
Observation start date	2002-12-05T16:02:17	2002-12-05T15:45:38			
[s] Observation end time (MET)	155516401.184000	155516749.52337			
Observation end date	2002-12-05T22:58:57	2002-12-05T23:05:49			
Read mode	TIMED	TIMED			

## 2.3 Aspect



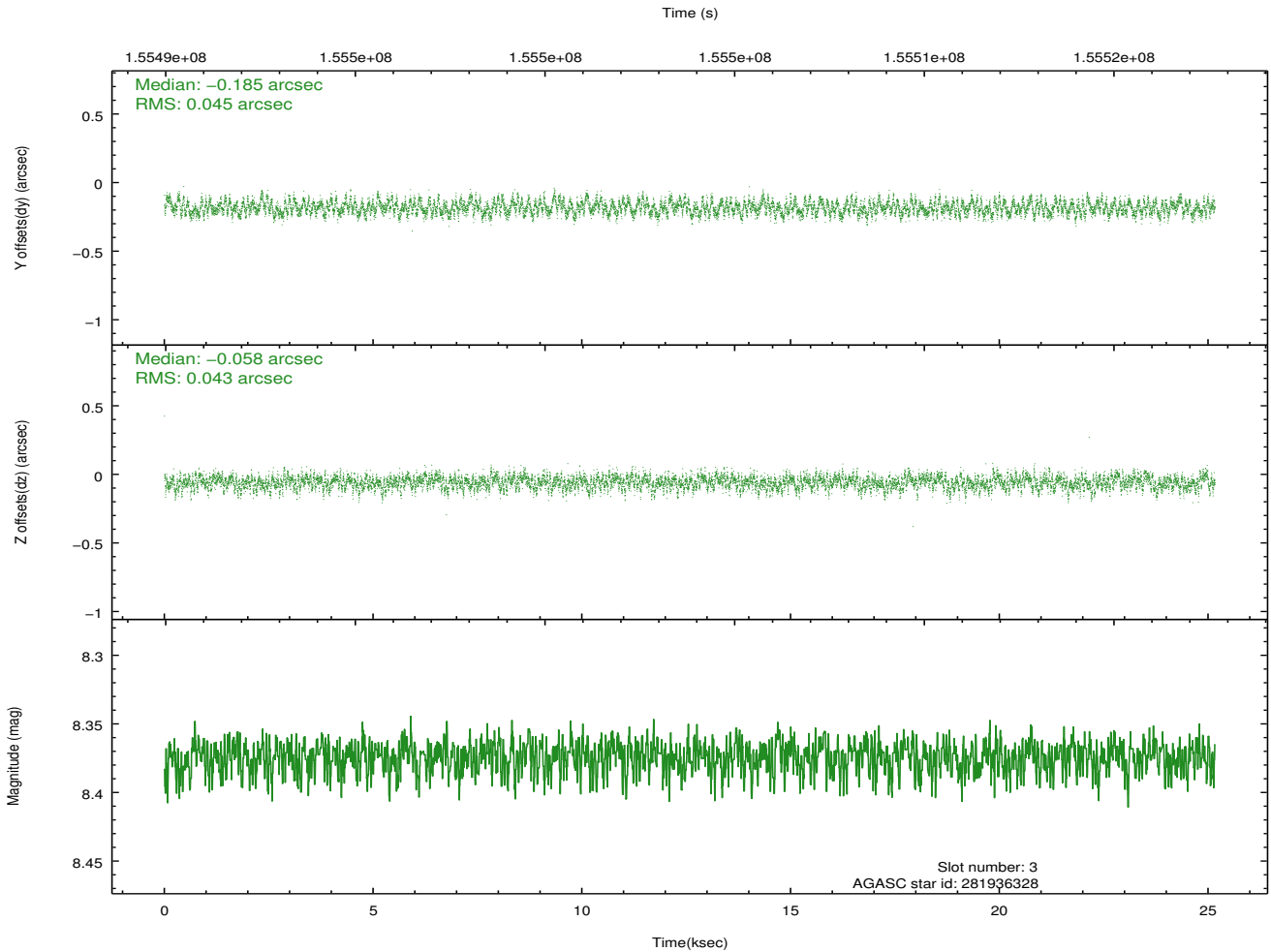
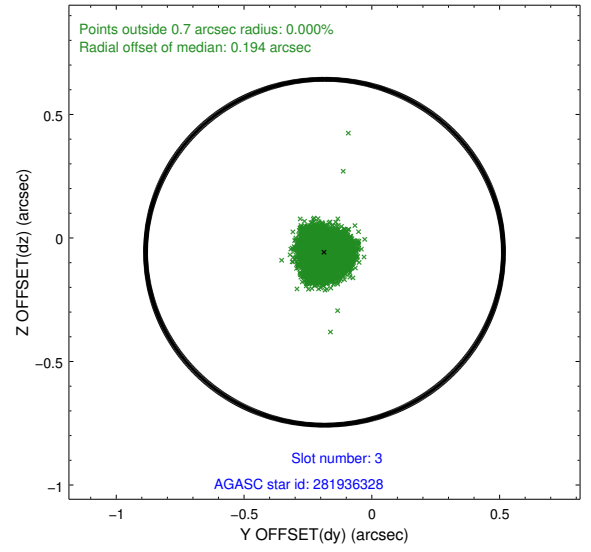
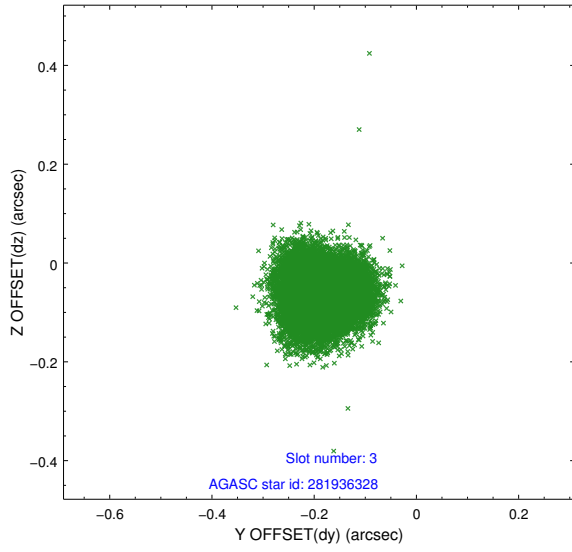


### Slot Statistics

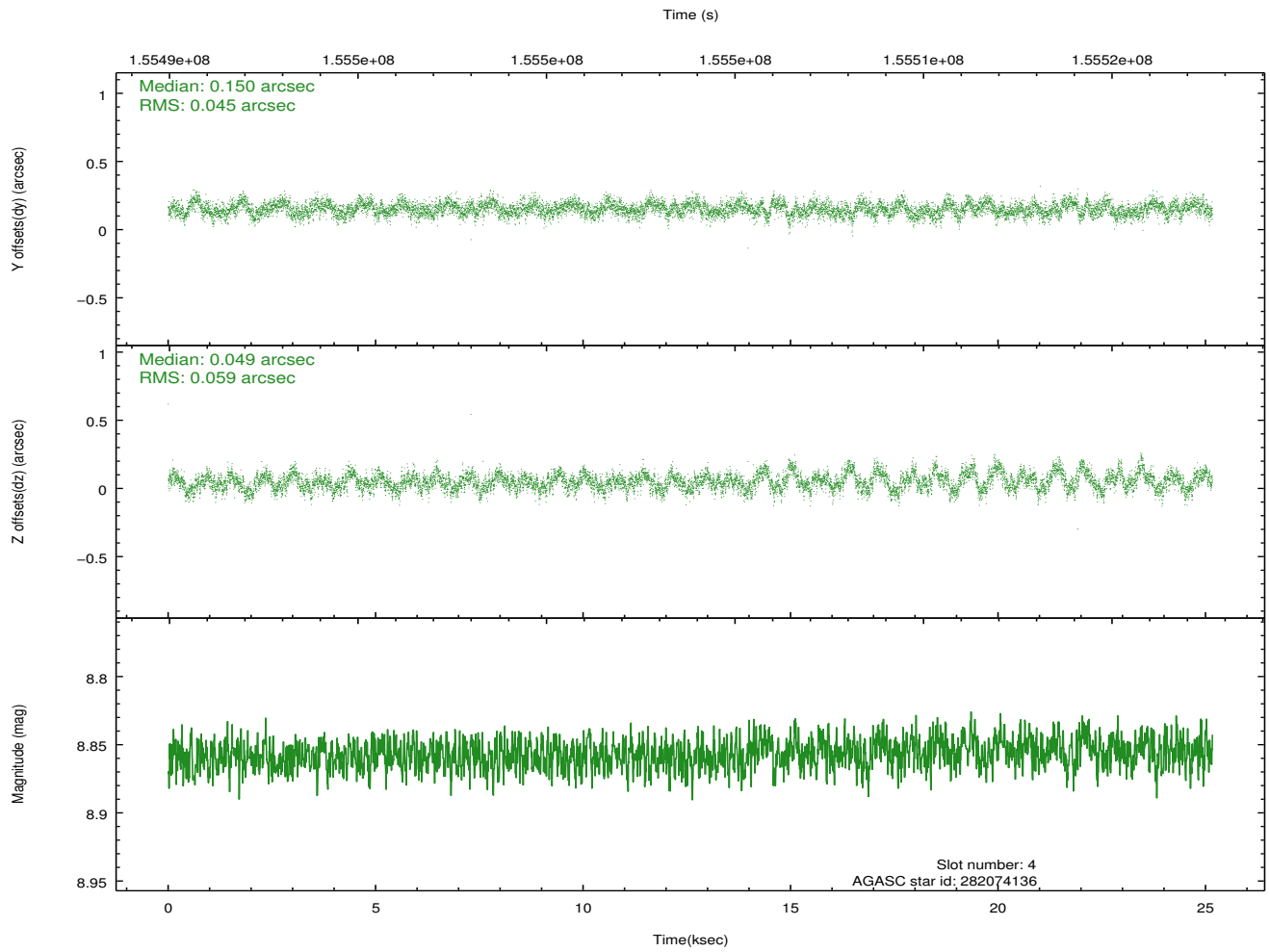
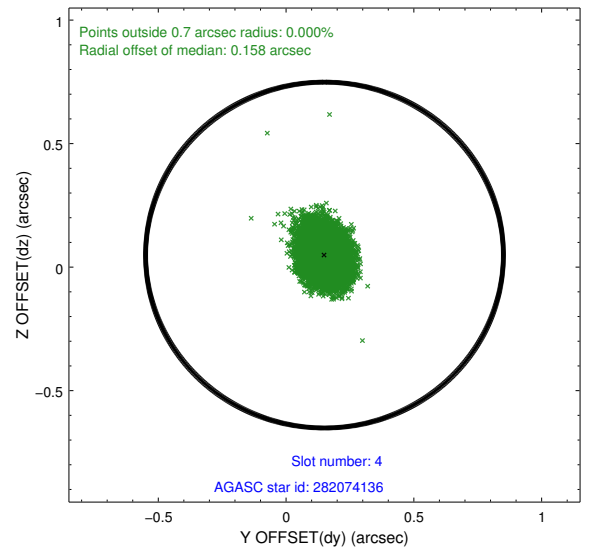
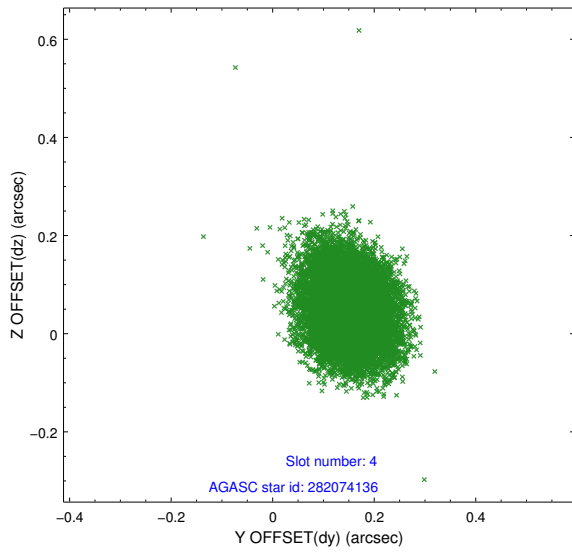
slot	status	id	mag	n_pts	med_dy	med_dz	dr1	dr2	ra	dec	mean_y	mean_z
0	FID	ACIS-I-2	7.15	6137	-0.110	-0.024	0.019	0.030	0.000000	0.000000	-757.35	-838.00
1	FID	ACIS-I-4	7.19	6138	0.057	0.068	0.019	0.027	0.000000	0.000000	2156.76	1068.29
2	FID	ACIS-I-6	7.26	6138	-0.046	0.024	0.024	0.038	0.000000	0.000000	402.86	1710.52
3	GUIDE	281936328	8.37	12275	-0.185	-0.058	0.067	0.103	297.132120	29.409480	-1957.10	-2073.70
4	GUIDE	282074136	8.86	12266	0.150	0.049	0.078	0.128	297.937624	29.263332	187.03	-634.37
5	GUIDE	349842504	8.91	12273	-0.072	0.056	0.100	0.167	298.204234	30.187941	-1623.06	2280.96
6	GUIDE	282085296	9.08	12269	-0.023	0.016	0.074	0.120	297.408737	29.666054	-2008.53	-807.84
7	GUIDE	282071472	9.28	12262	0.119	-0.059	0.089	0.146	297.702282	29.253970	-304.41	-1187.58

## 2.4 Star Slots

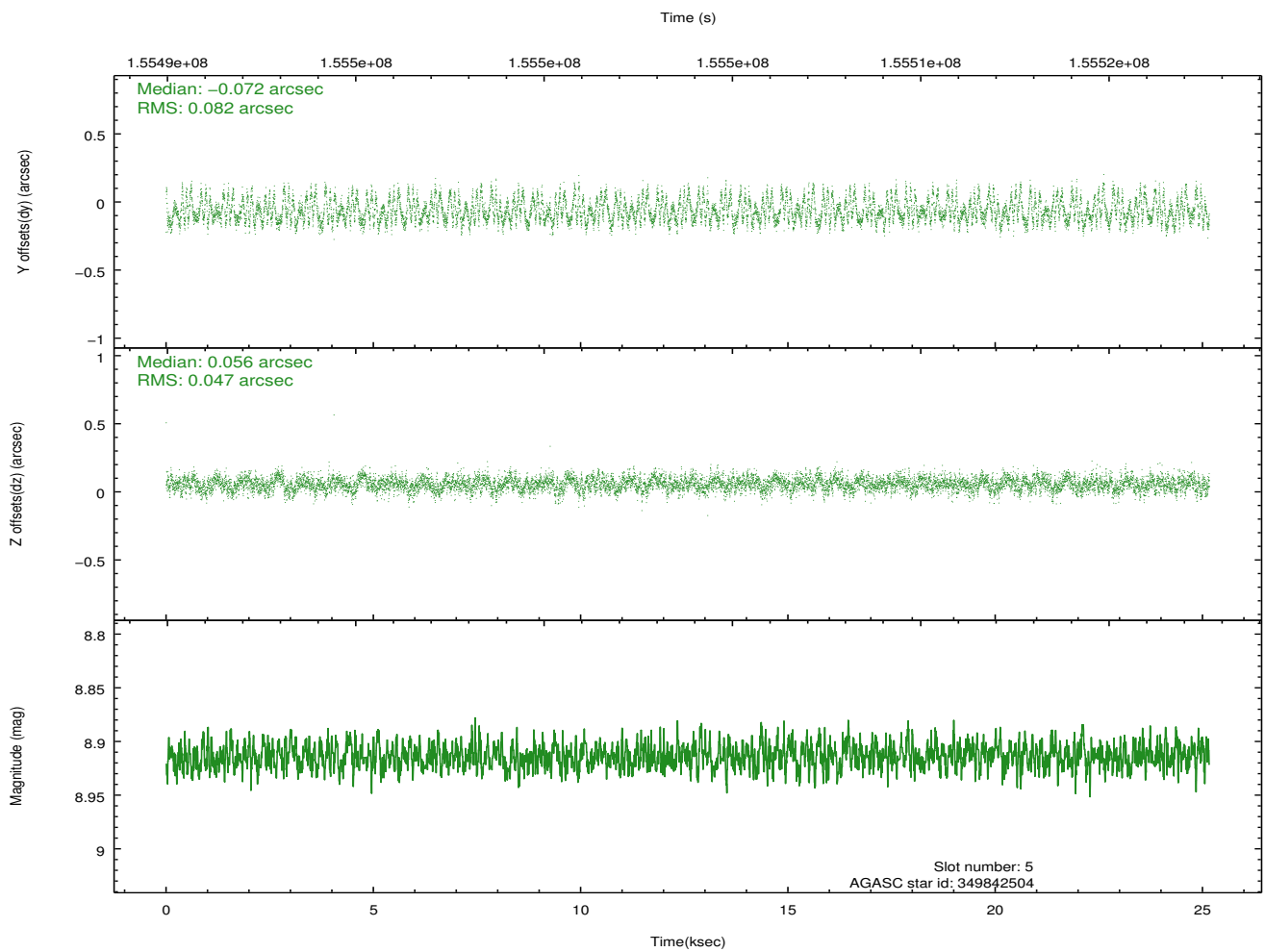
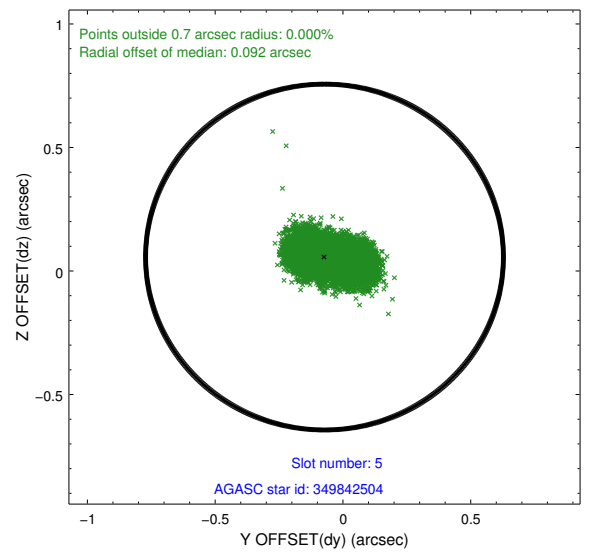
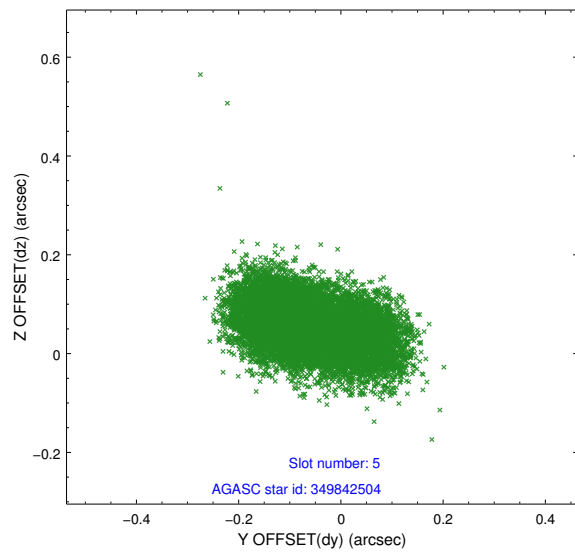
### 2.4.1 Slot 3



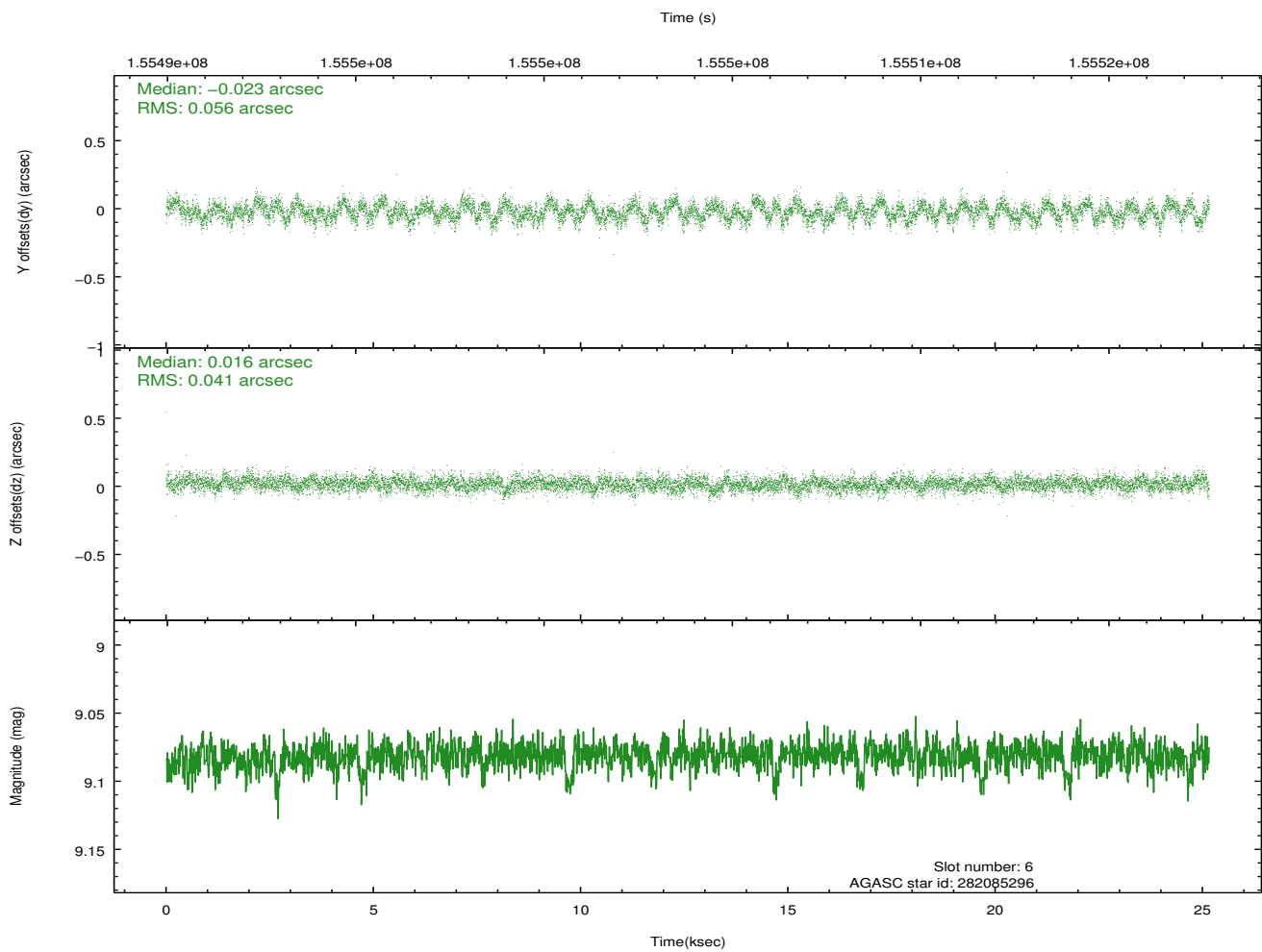
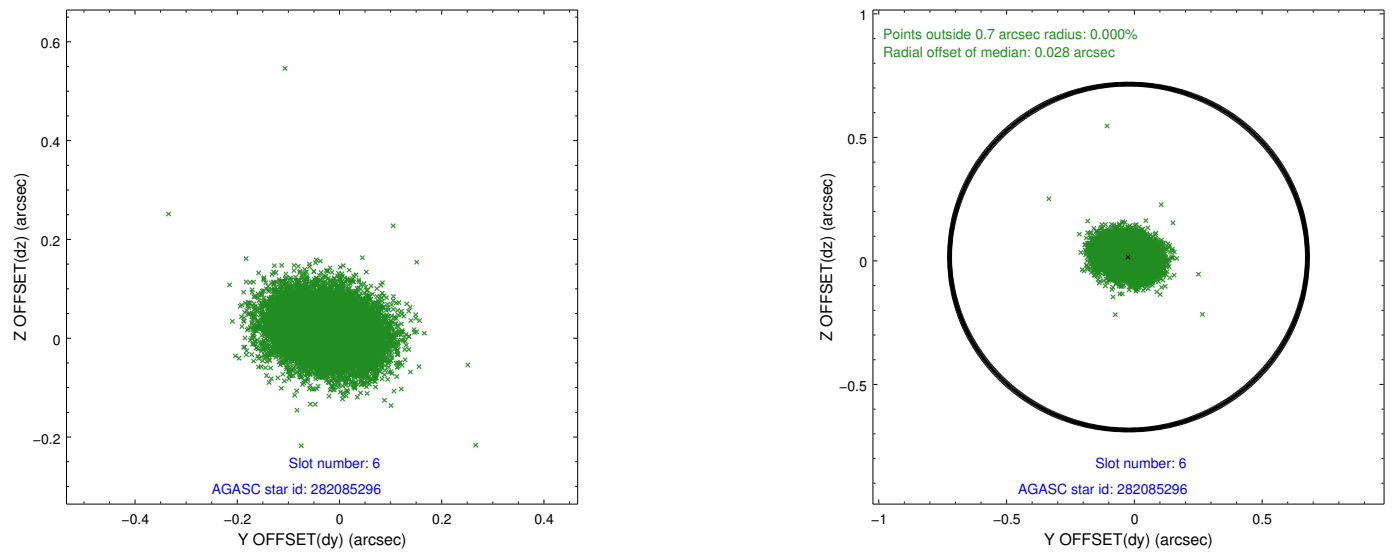
## 2.4.2 Slot 4



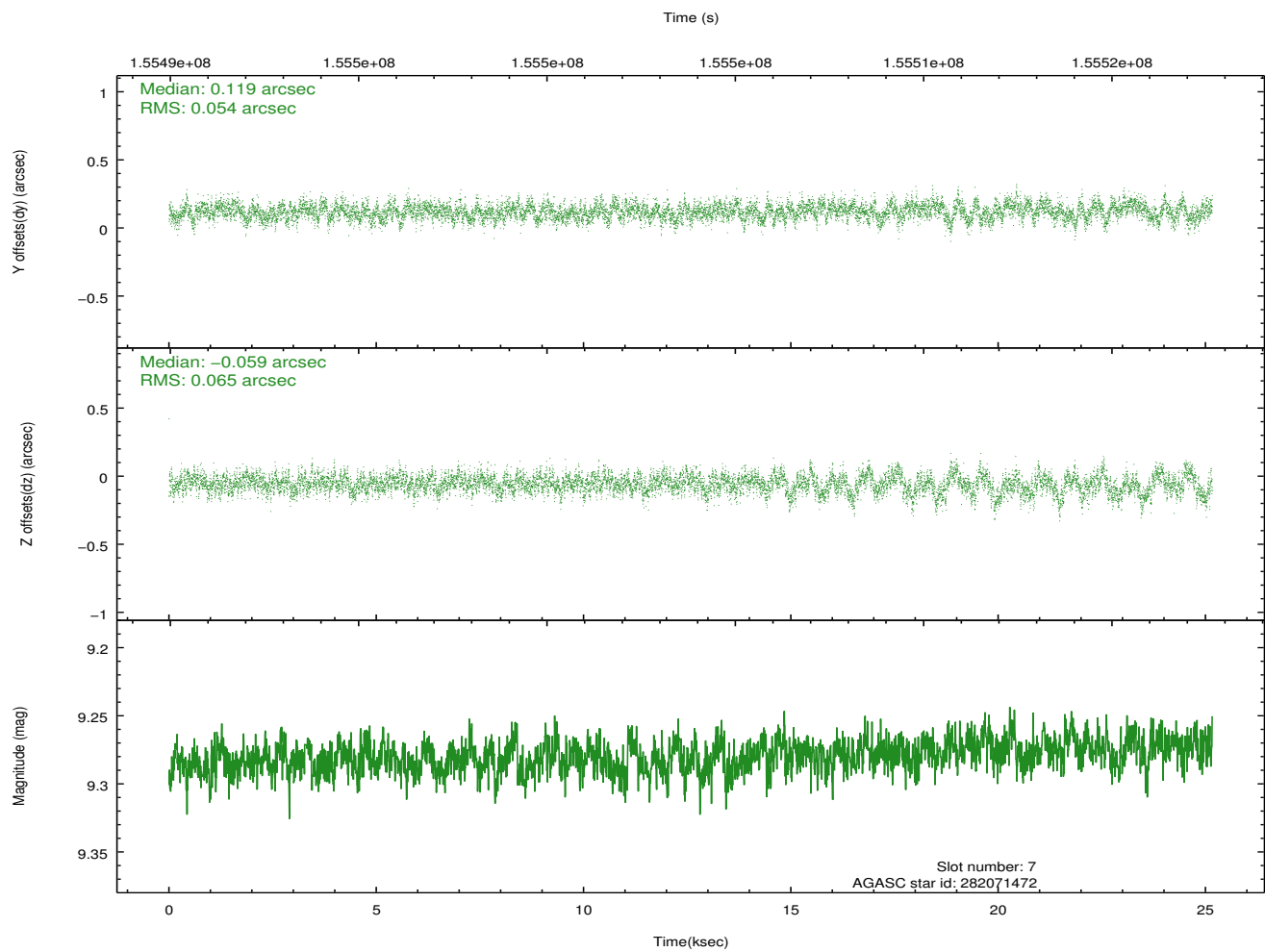
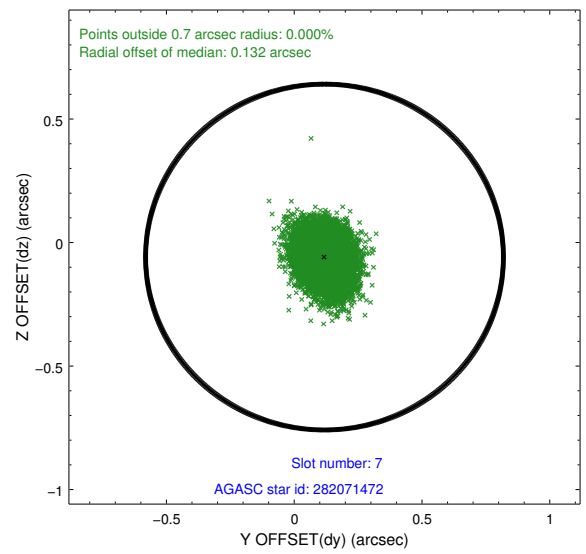
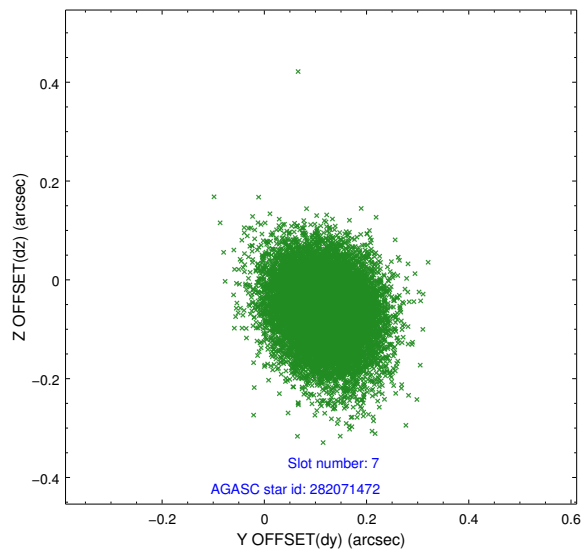
### 2.4.3 Slot 5



## 2.4.4 Slot 6

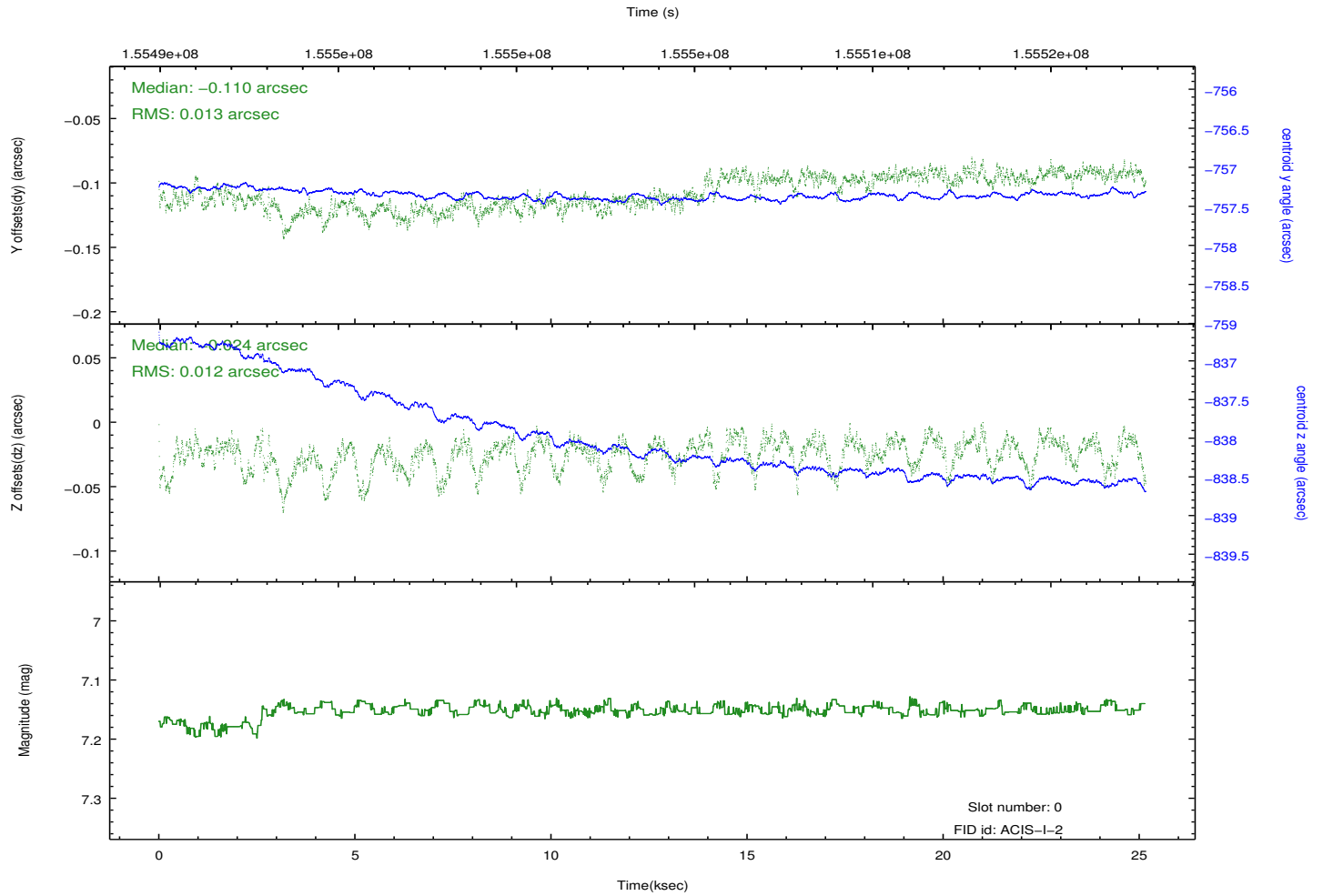
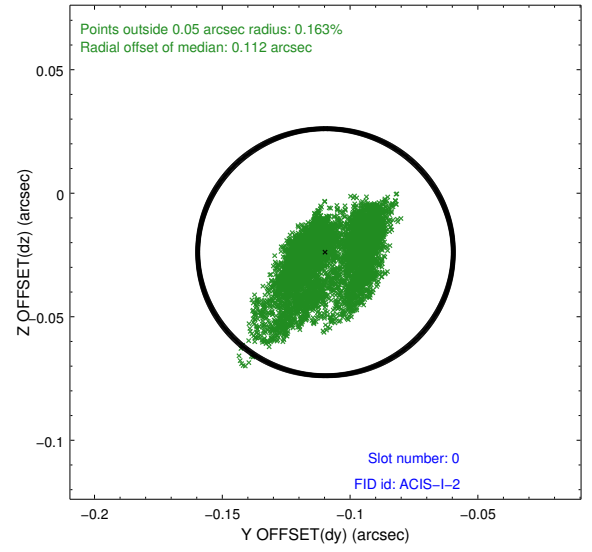
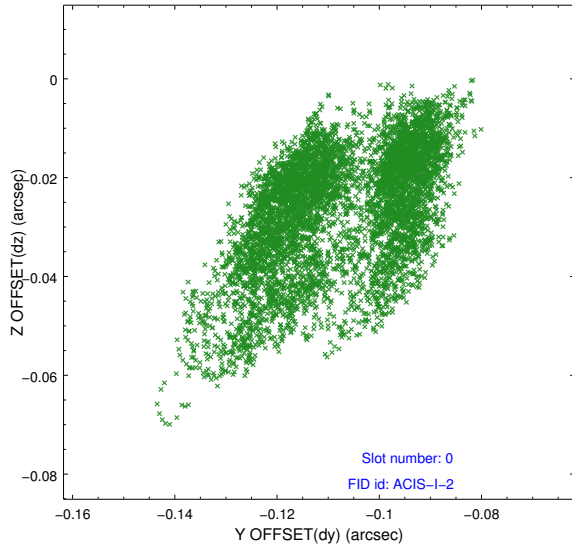


## 2.4.5 Slot 7

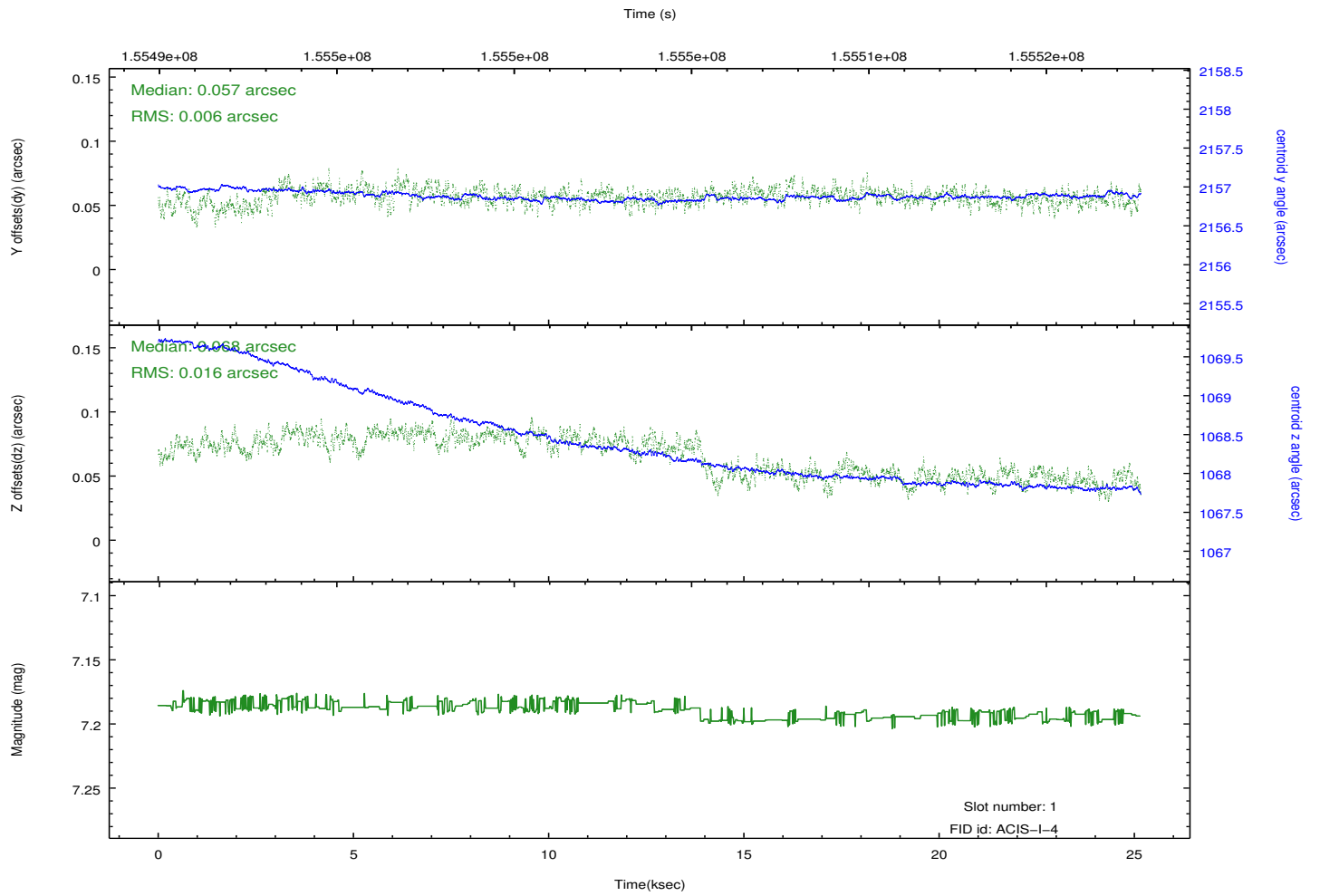
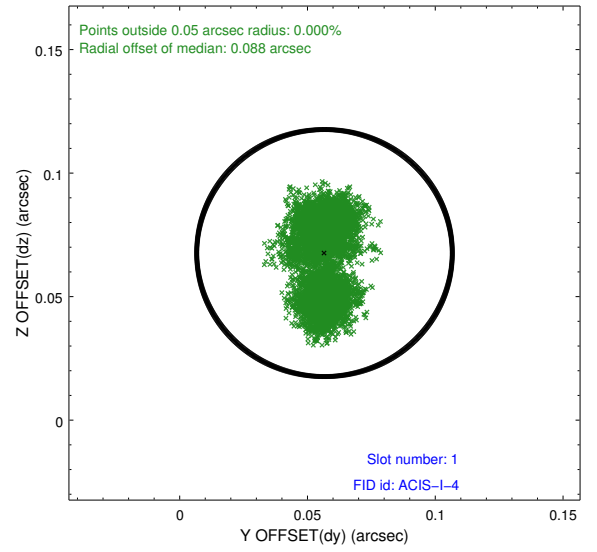
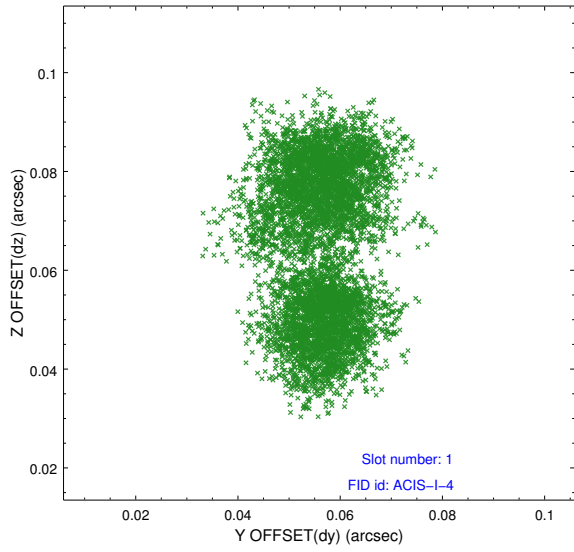


## 2.5 FID Slots

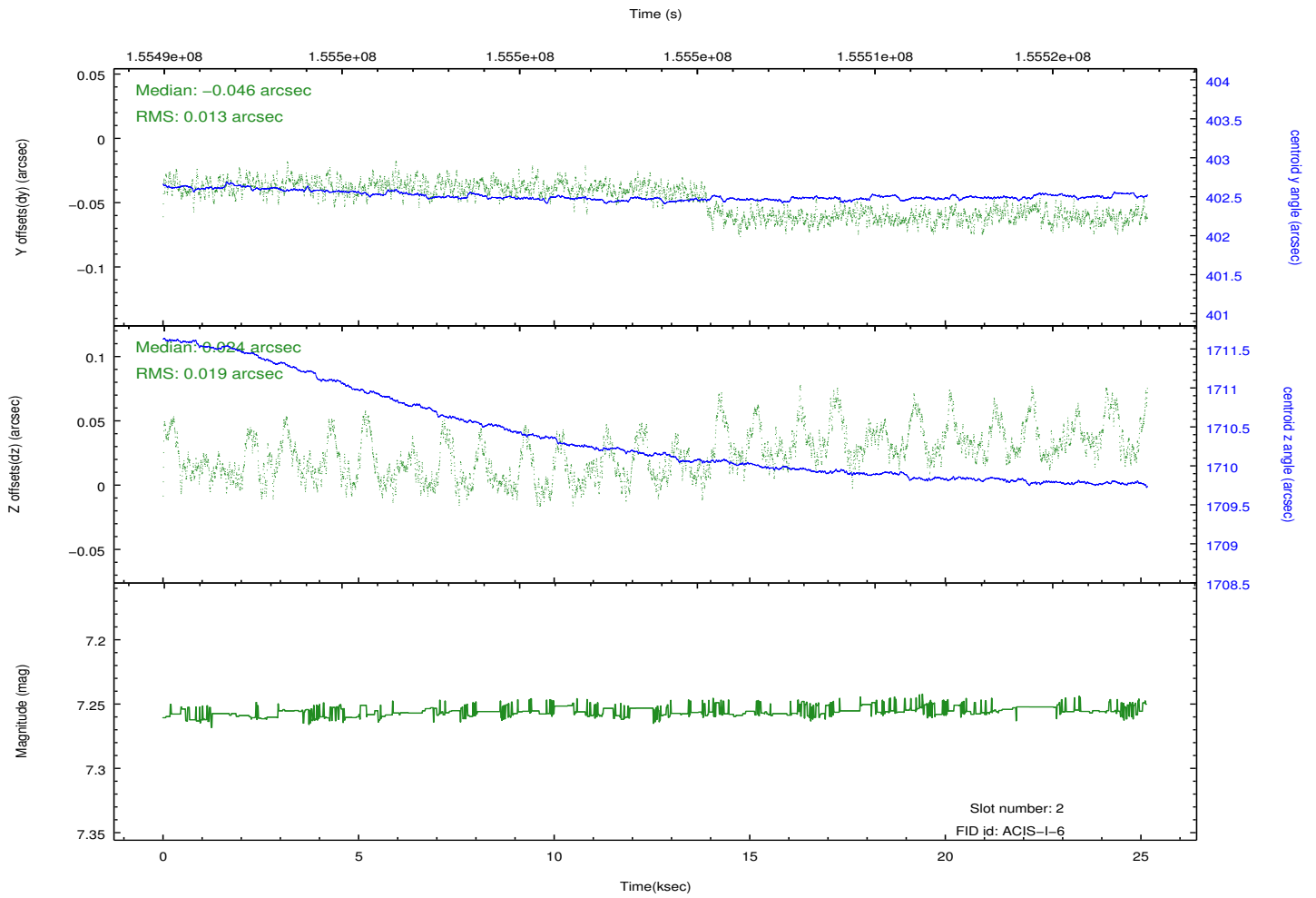
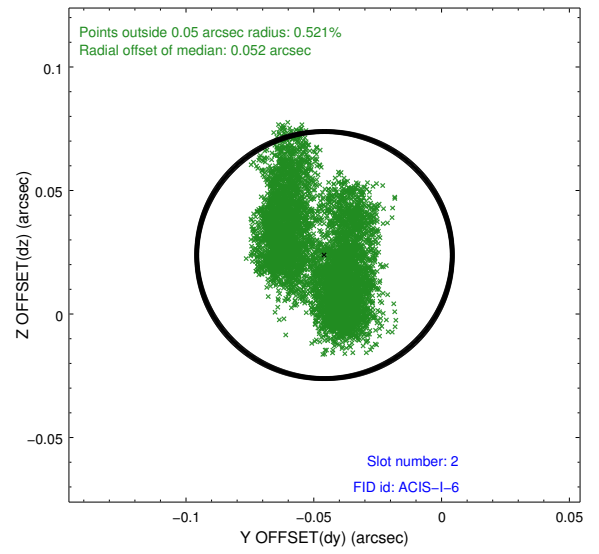
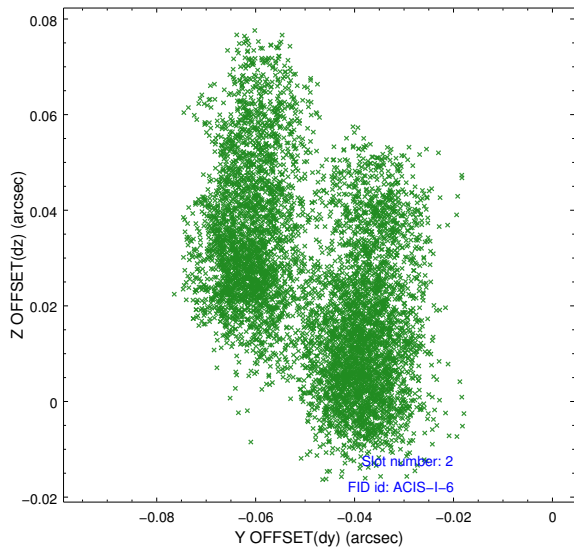
### 2.5.1 Slot 0



## 2.5.2 Slot 1



### 2.5.3 Slot 2



# A Summary

## A.1 Status

V&V Scientist	Jen Lauer
V&V Date (YYYY-MM-DD)	2012.10.30
V&V Edition	1
V&V Disposition and Status	OK
V&V Charge Time	25.161

## A.2 Comments