

V&V Reference Report

L2 ASCDS Version : 8.4.5

Observation 3920 - L2 Version 3
Chandra X-Ray Center

L2 Processing Date : Oct 29 2012

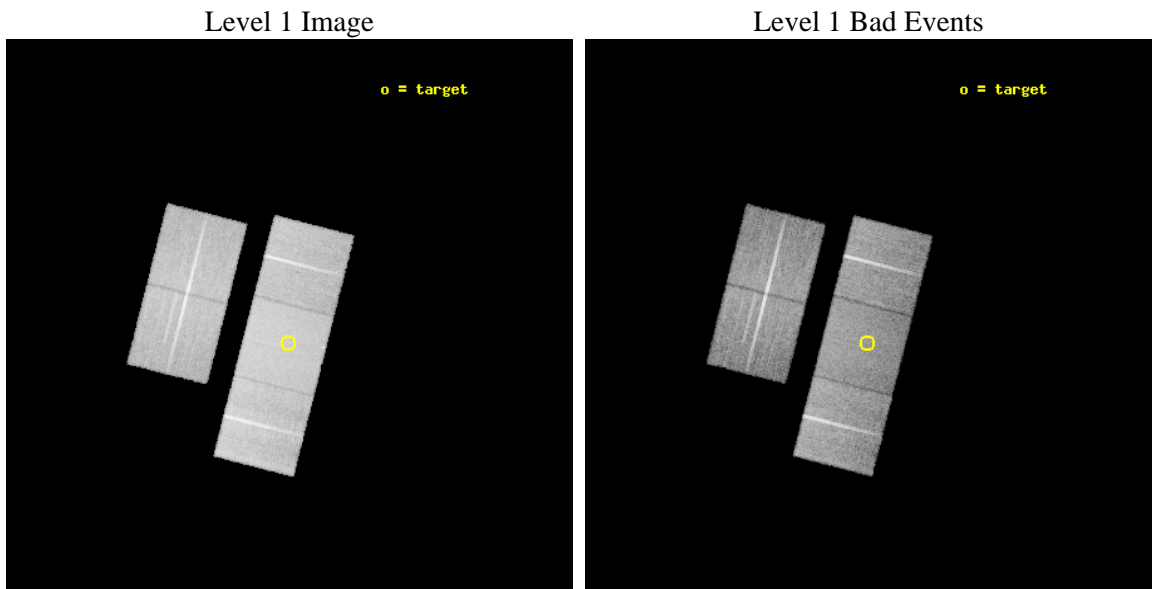
Contents

1	Front	2
2	OBI	3
2.1	OBI	3
2.1.1	Images	3
2.1.2	Bias	3
2.1.3	Parameters	4
2.1.4	Events	4
2.2	Compared Parameters	5
2.3	Aspect	6
2.4	Star Slots	9
2.4.1	Slot 3	9
2.4.2	Slot 4	10
2.4.3	Slot 5	11
2.4.4	Slot 6	12
2.4.5	Slot 7	13
2.5	FID Slots	14
2.5.1	Slot 0	14
2.5.2	Slot 1	15
2.5.3	Slot 2	16
A	Summary	17
A.1	Status	17
A.2	Comments	17

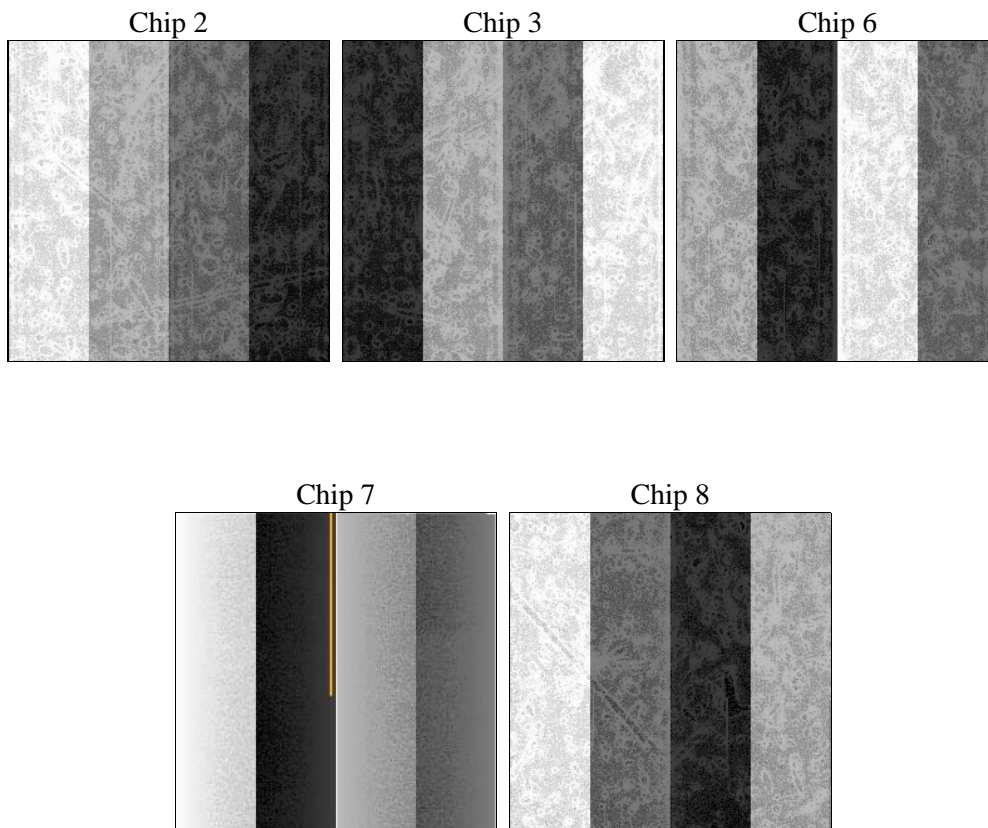
2 OBI

2.1 OBI

2.1.1 Images



2.1.2 Bias



2.1.3 Parameters

obi_num	0	Obi number	sched_exp_time	26000.000000	[s] Scheduled observation exposure time
ascdsver	8.4.5	Processing system revision	ontime	26105.099949777	Sum of GTIs [s]
caldbver	4.5.2	 	ontime2	26098.81798929	Sum of GTIs [s]
date	2012-10-29T05:15:30	Date and time of file creation	ontime3	26105.099949777	Sum of GTIs [s]
revision	3	Processing version of data	ontime6	26101.958949625	Sum of GTIs [s]
			ontime7	26105.099949777	Sum of GTIs [s]
			ontime8	26105.099949777	Sum of GTIs [s]
			l1events	872229	Number of level 1 events

2.1.4 Events

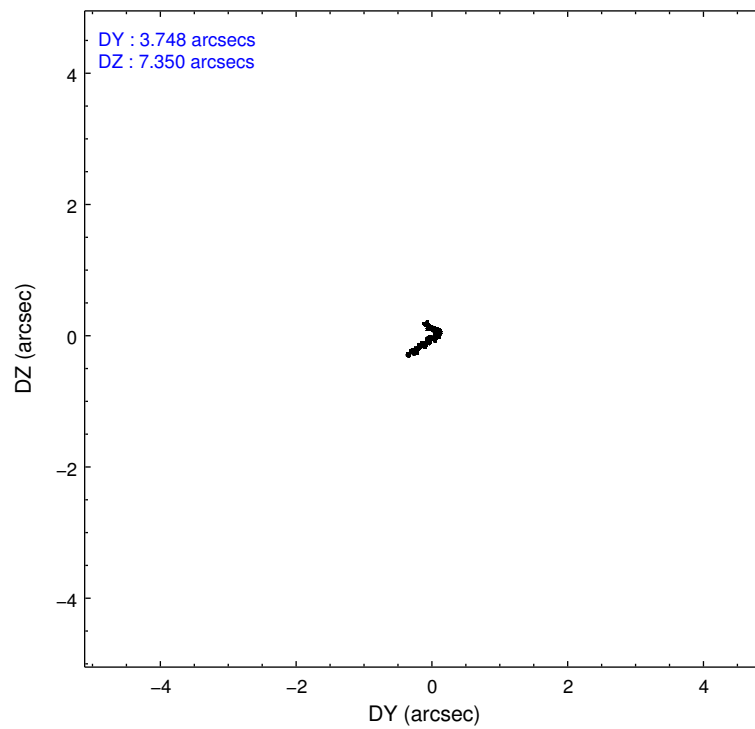
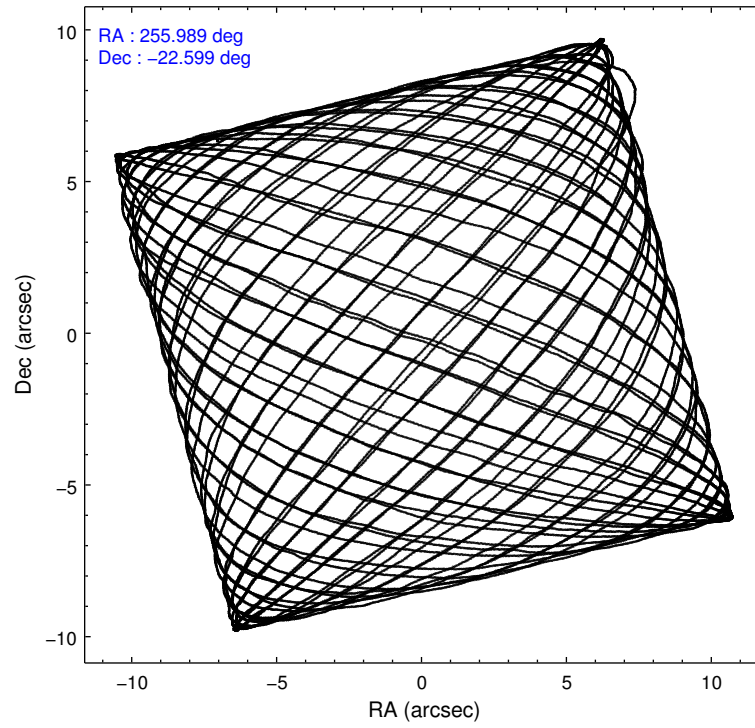
	ccd 2	ccd 3	ccd 6	ccd 7	ccd 8
level 1 events	153414	151443	158497	209332	199543
rejected events	134927	132779	139161	123370	158322
rejected %	87%	87%	87%	58%	79%

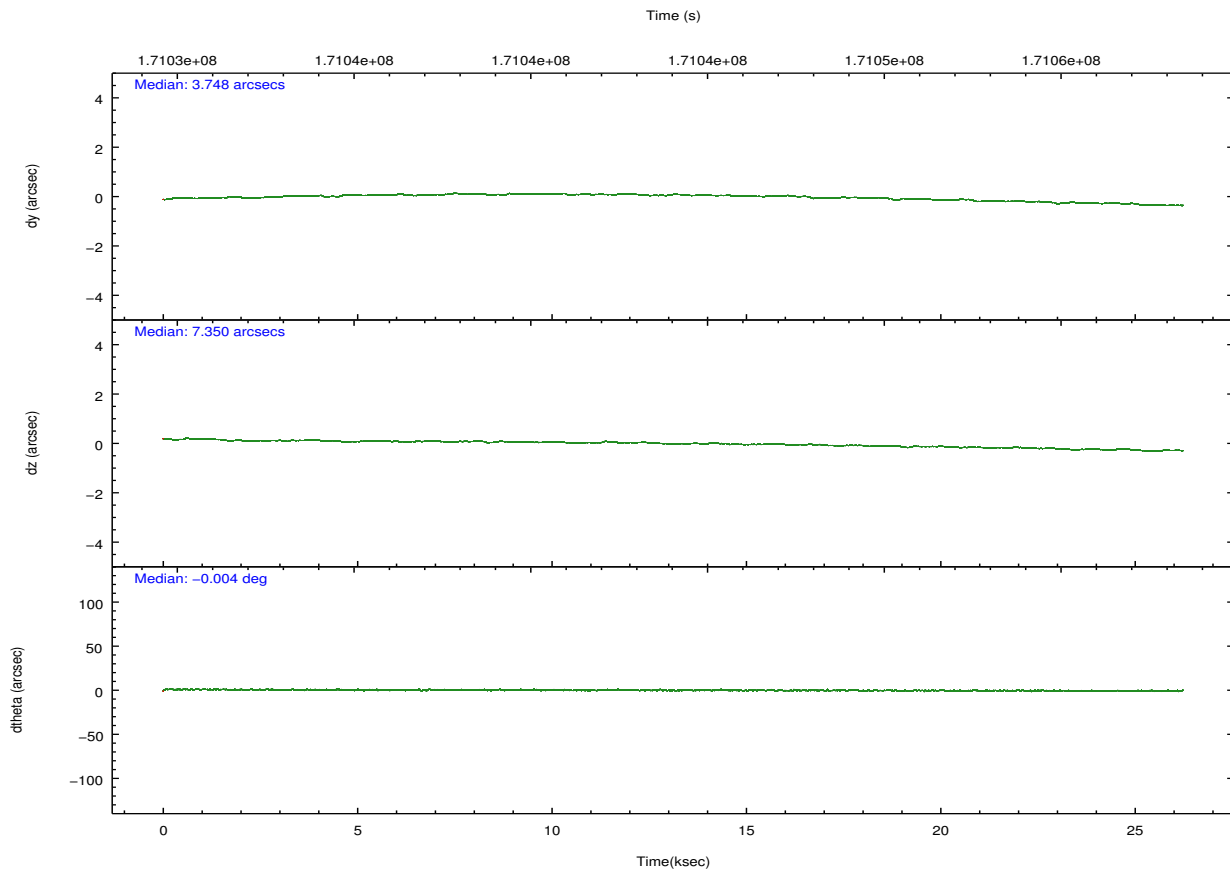
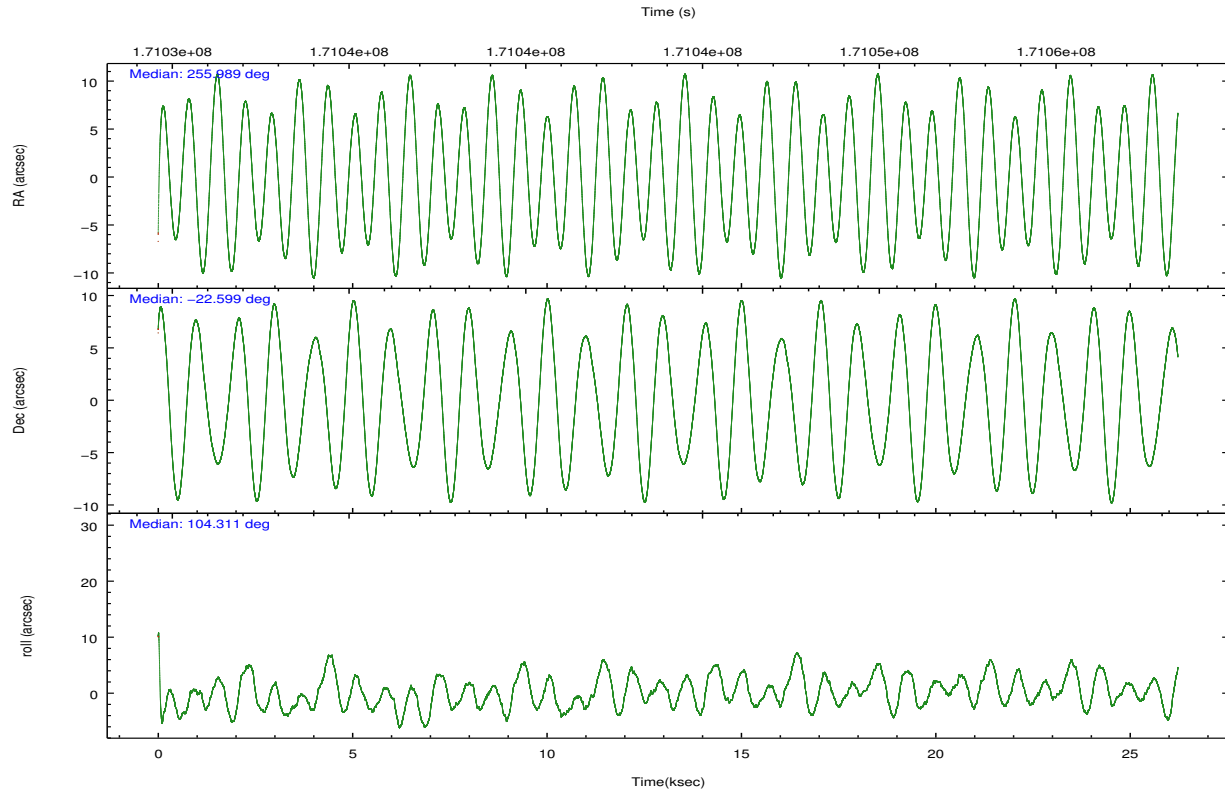
	ccd 2	ccd 3	ccd 6	ccd 7	ccd 8
grade 0 events	8235	8425	7983	8064	13319
	5%	5%	5%	3%	6%
grade 1 events	83	99	63	192	125
	0%	0%	0%	0%	0%
grade 2 events	3697	3491	3812	16815	8901
	2%	2%	2%	8%	4%
grade 3 events	1766	1814	1877	7640	4366
	1%	1%	1%	3%	2%
grade 4 events	1774	1751	1815	7478	4116
	1%	1%	1%	3%	2%
grade 5 events	5985	6911	7195	19923	9312
	3%	4%	4%	9%	4%
grade 6 events	3018	3187	3853	45983	10521
	1%	2%	2%	21%	5%
grade 7 events	128856	125765	131899	103237	148883
	83%	83%	83%	49%	74%

2.2 Compared Parameters

Parameter	Planned	Actual	Parameter	Planned	Actual
Instrument	ACIS	ACIS	Obspar format version number	7	7
Detector	ACIS-23678	ACIS-23678	Obspar file type	PREDICTED	ACTUAL
Grating	NONE	NONE	Obspar update status	NONE	UPDATED
Data mode	VFAINT	VFAINT	Number of optional ACIS chips dropped	0	0
Observation mode	POINTING	POINTING	On-chip summing requested	N	N
[deg] Pointing RA	256.009707	255.9888128032063	Subarray requested	NONE	NONE
[deg] Pointing Dec	-22.618681	-22.59946285575177	Alternating exposures requested	N	N
[deg] Pointing Roll	104.171439	104.3200499744139	[s] Primary exposure time	0.000000	3.1
[mm] SIM focus pos	-0.684267	-0.6828225247311905			
[mm] SIM defocus	0	0.001444936568705701			
[mm] SIM translation stage pos	-190.132523	-190.1425803651734			
[mm] SIM translation stage offset	0	0.01005778216563158			
[s] Observation start time (MET)	171031139.184000	171030144.13848			
Observation start date	2003-06-03T12:37:55	2003-06-03T12:22:24			
[s] Observation end time (MET)	171057139.184000	171058070.26467			
Observation end date	2003-06-03T19:51:15	2003-06-03T20:07:50			
Read mode	TIMED	TIMED			

2.3 Aspect



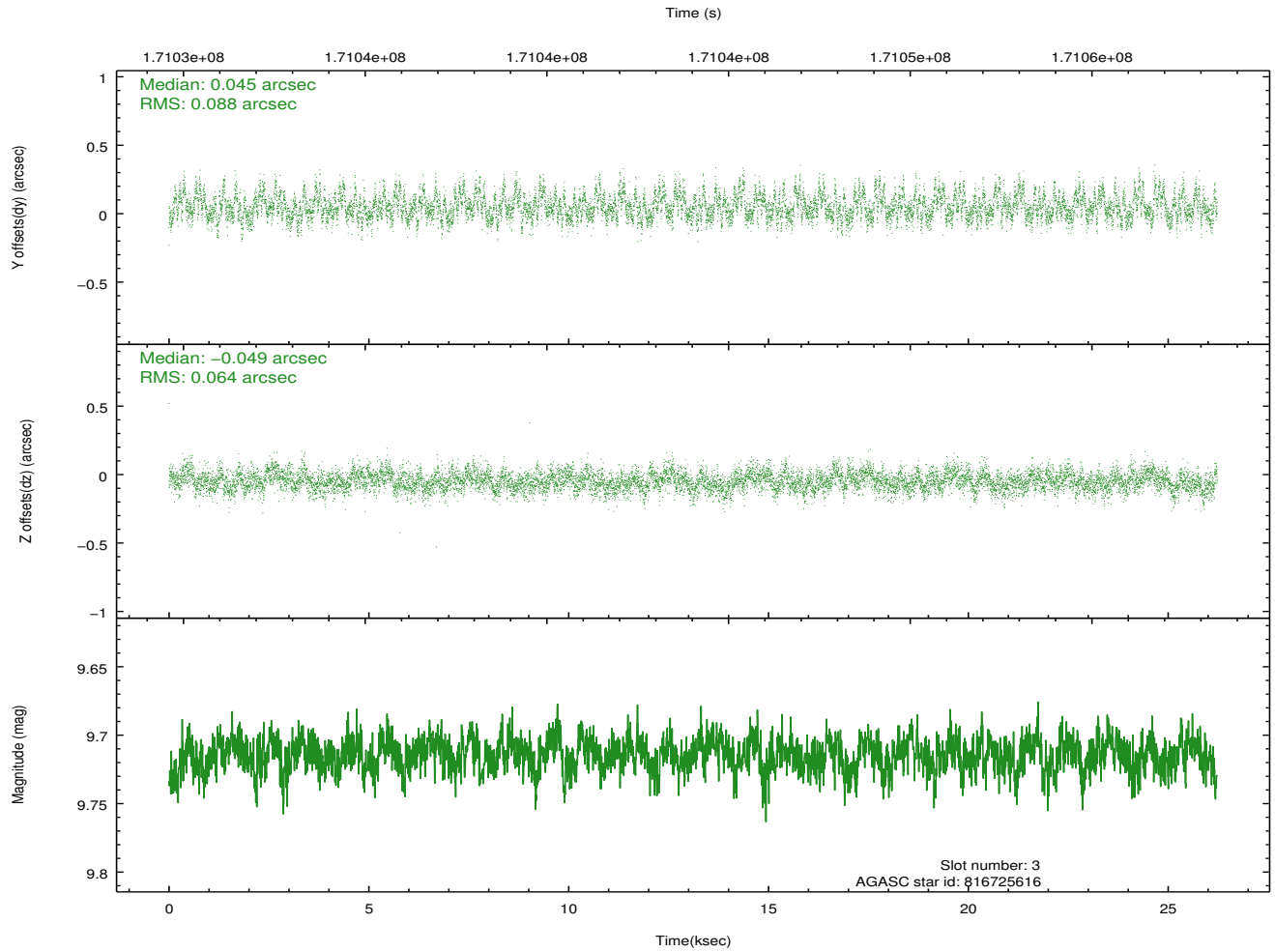
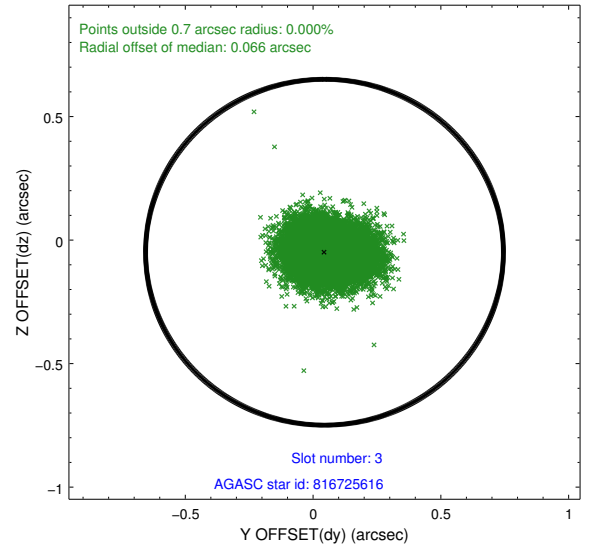
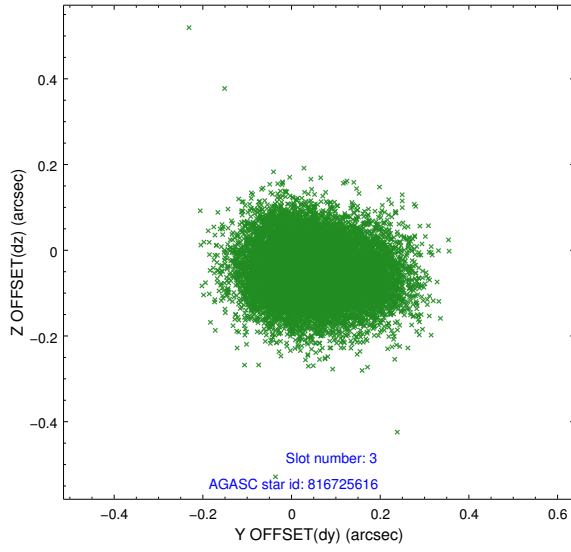


Slot Statistics

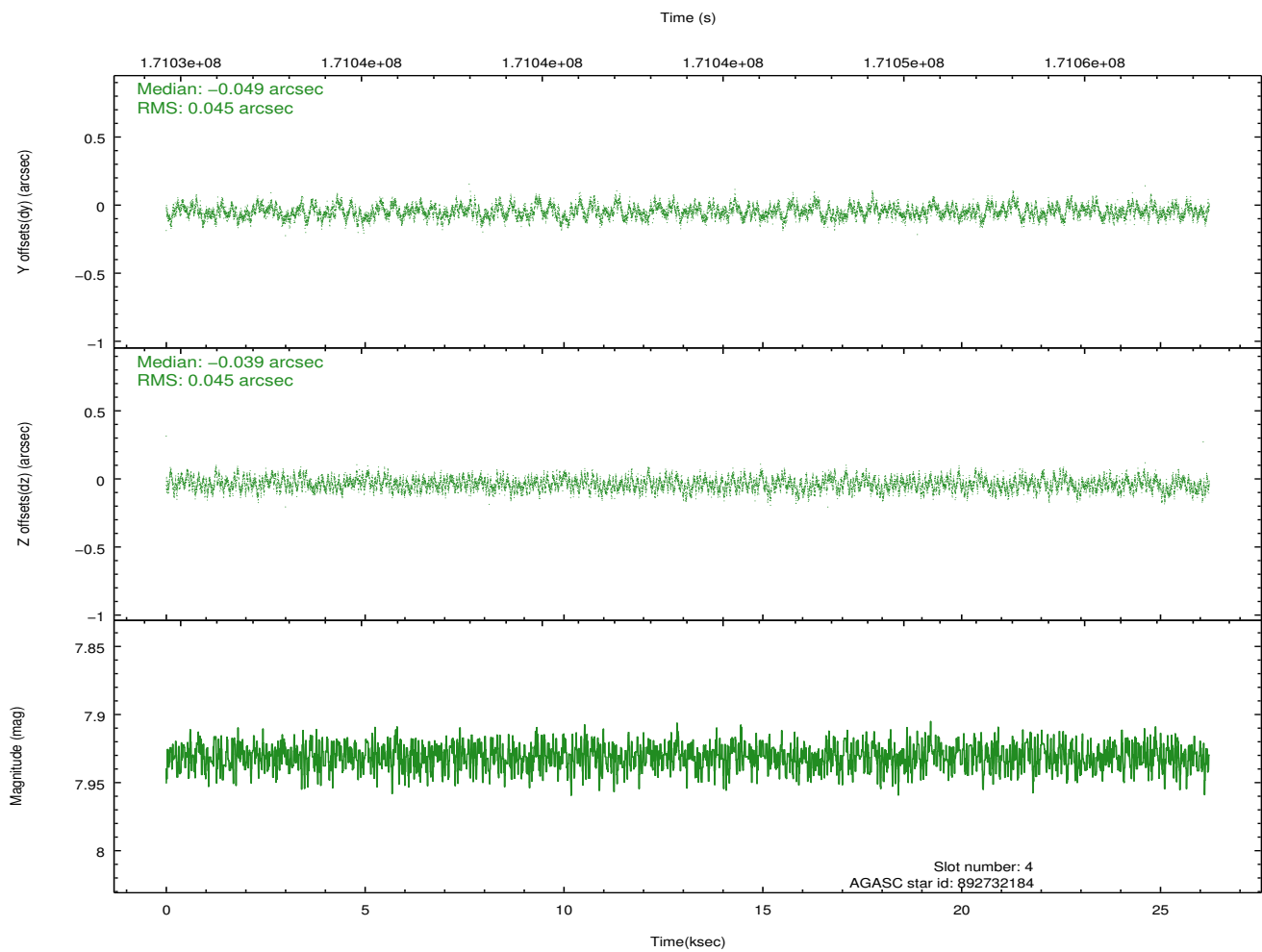
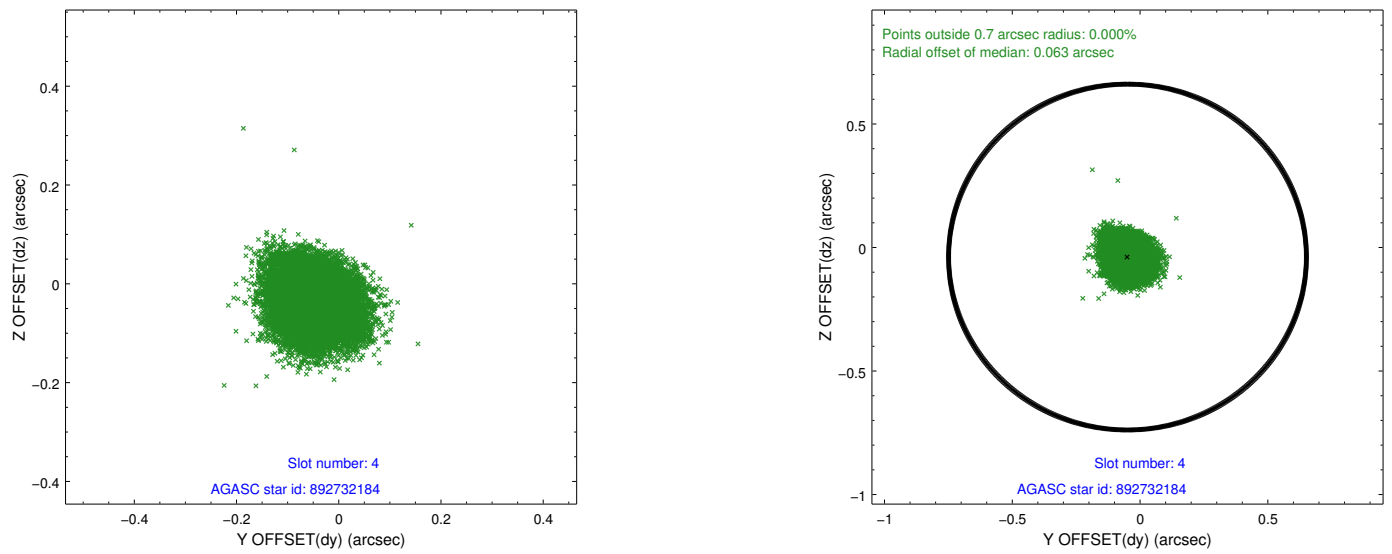
slot	status	id	mag	n_pts	med_dy	med_dz	dr1	dr2	ra	dec	mean_y	mean_z
0	FID	ACIS-S-2	7.11	6397	-0.018	-0.015	0.008	0.013	0.000000	0.000000	-756.38	-1728.46
1	FID	ACIS-S-4	7.20	6398	0.042	0.013	0.007	0.013	0.000000	0.000000	2156.90	179.95
2	FID	ACIS-S-5	7.24	6398	-0.056	0.011	0.010	0.020	0.000000	0.000000	-1809.13	173.73
3	GUIDE	816725616	9.71	12788	0.045	-0.049	0.116	0.187	255.331515	-22.355374	1466.69	1959.27
4	GUIDE	892732184	7.93	12795	-0.049	-0.039	0.069	0.108	255.982486	-22.880947	-893.24	318.80
5	GUIDE	892739296	8.18	12794	-0.045	0.006	0.080	0.137	255.536318	-23.288124	-1956.30	2108.30
6	GUIDE	892755368	9.84	12698	-0.046	0.086	0.155	0.256	256.498414	-22.856757	-1231.46	-1361.04
7	GUIDE	818416400	9.97	12778	0.087	-0.001	0.176	0.303	256.535150	-21.873688	2168.15	-2357.60

2.4 Star Slots

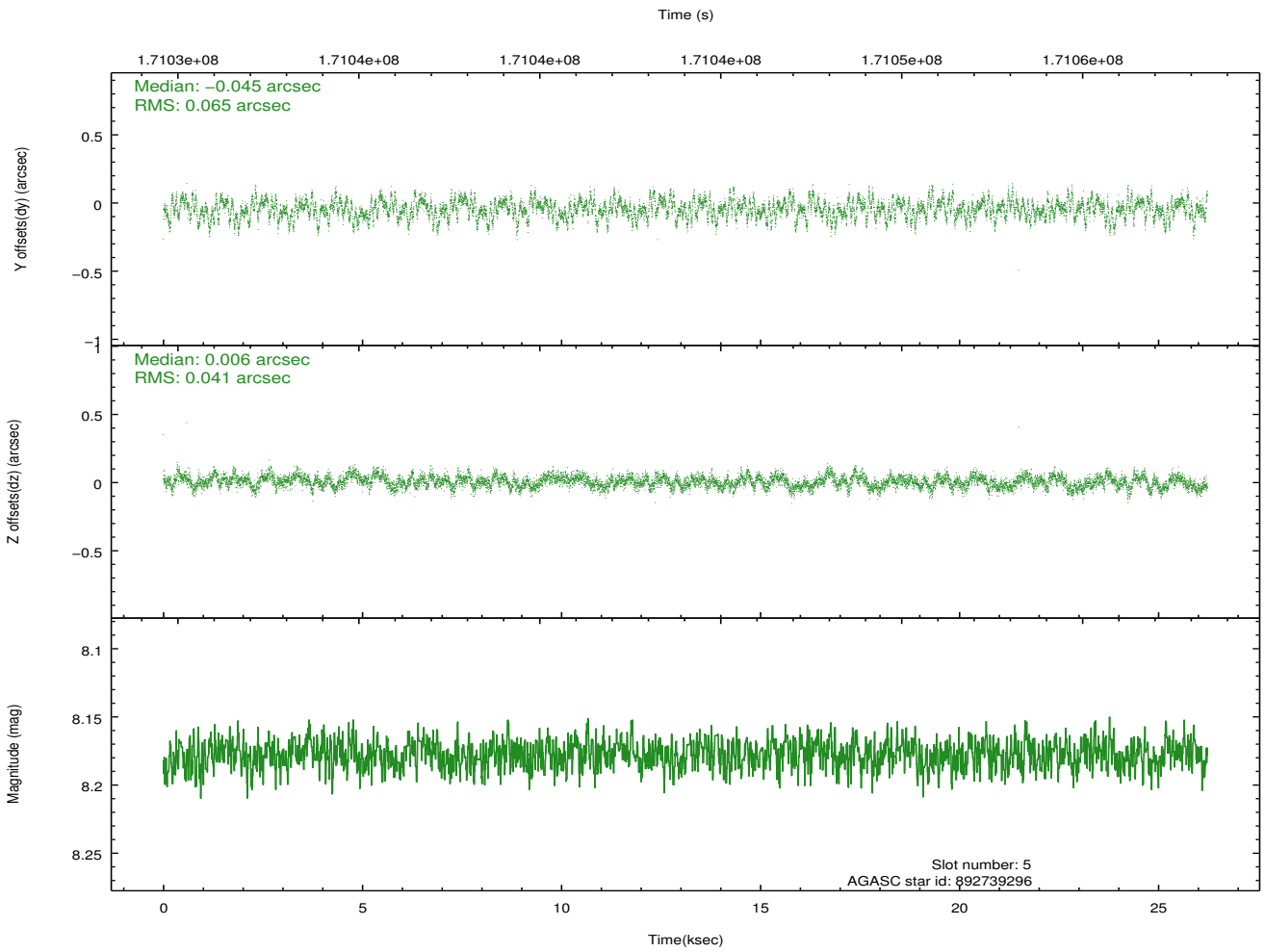
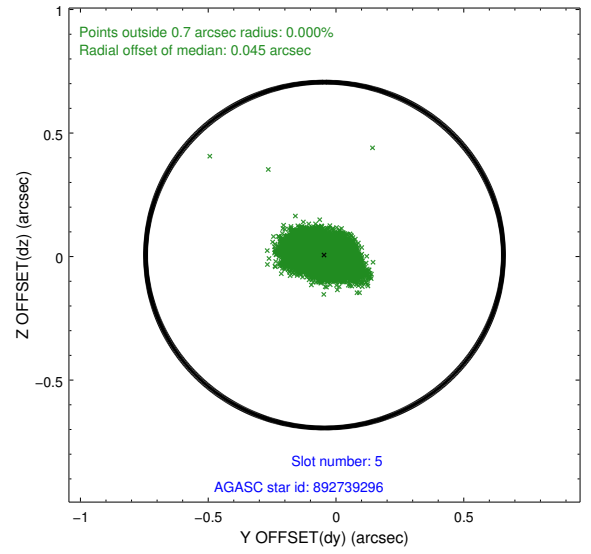
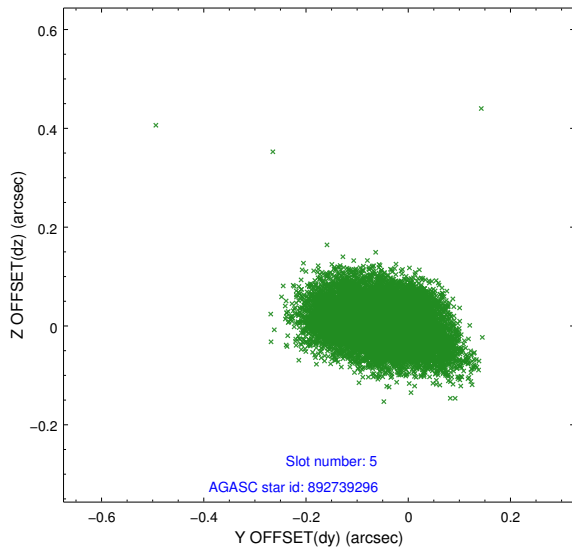
2.4.1 Slot 3



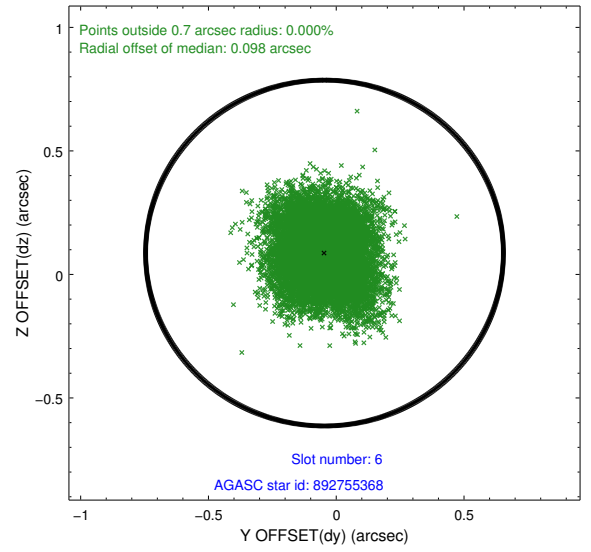
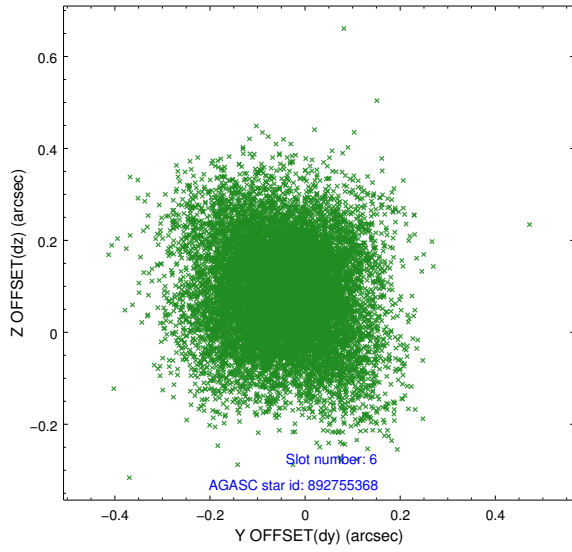
2.4.2 Slot 4



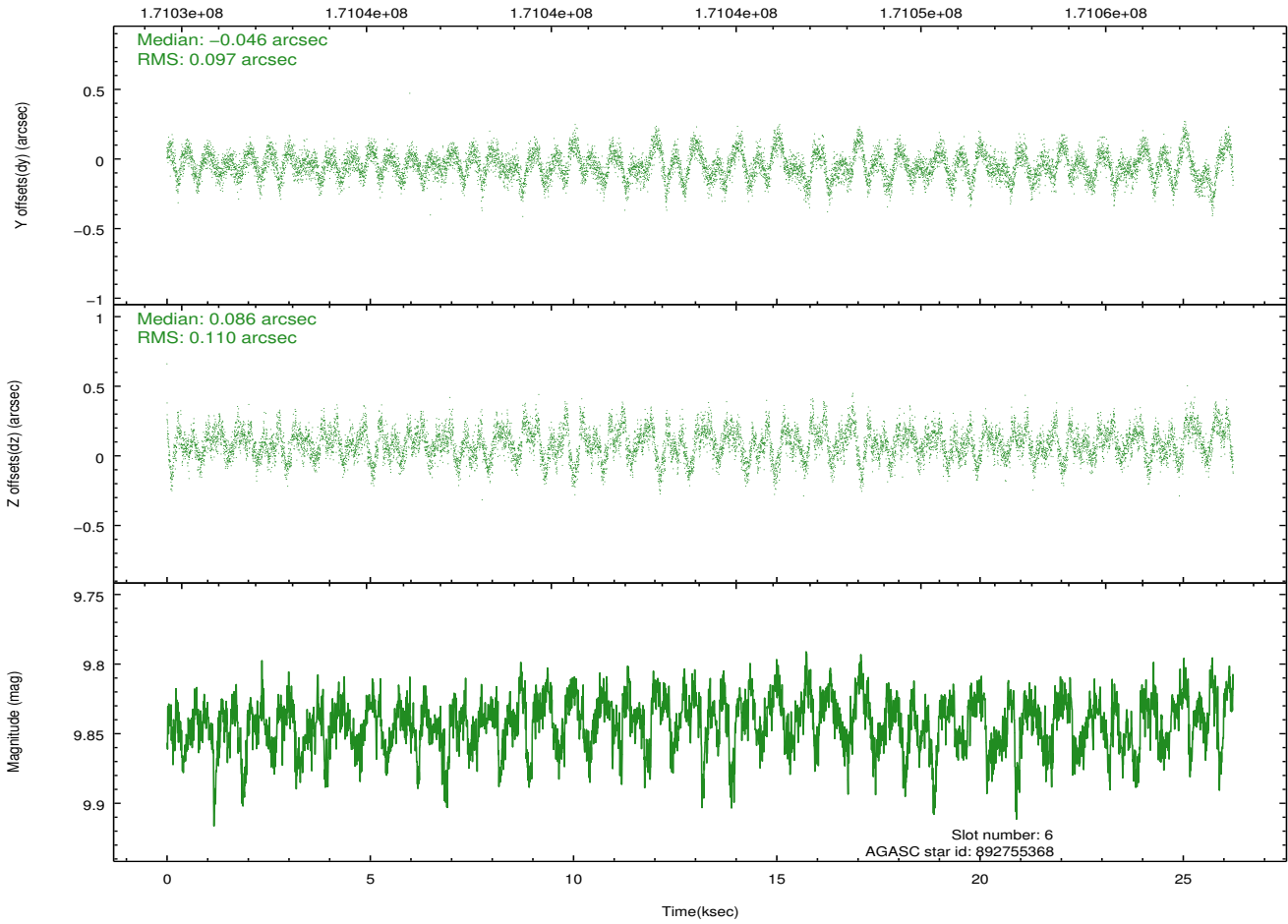
2.4.3 Slot 5



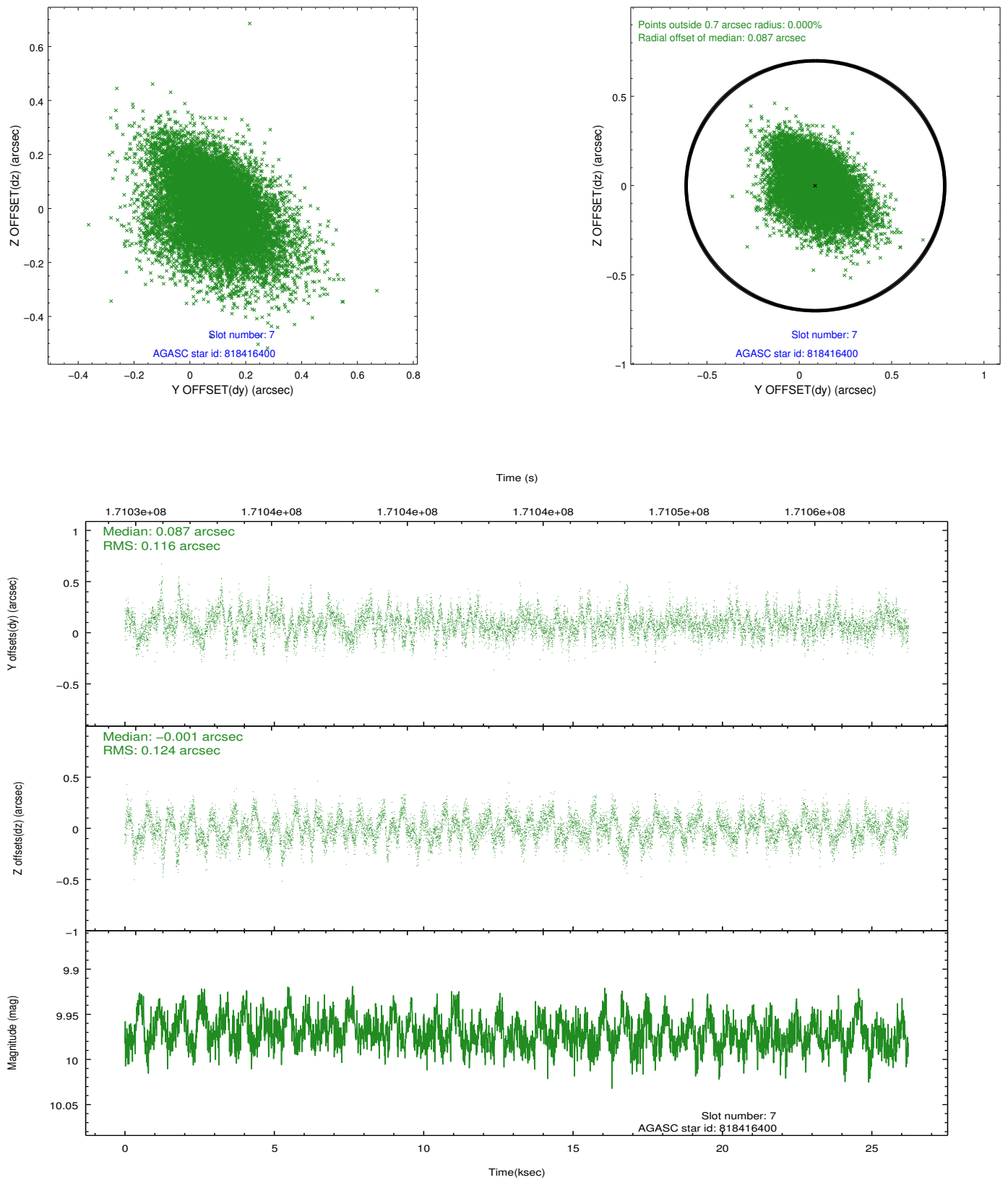
2.4.4 Slot 6



Time (s)

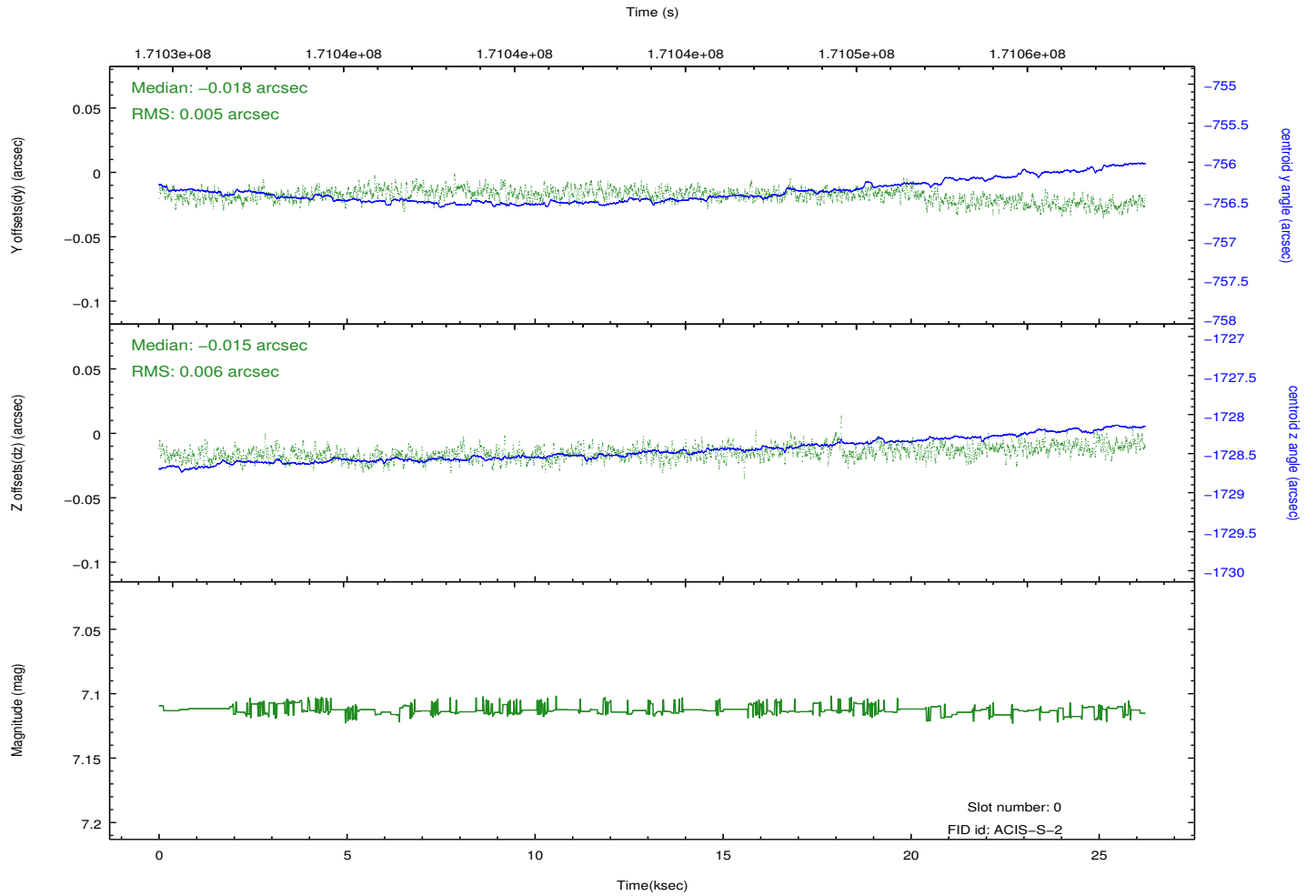
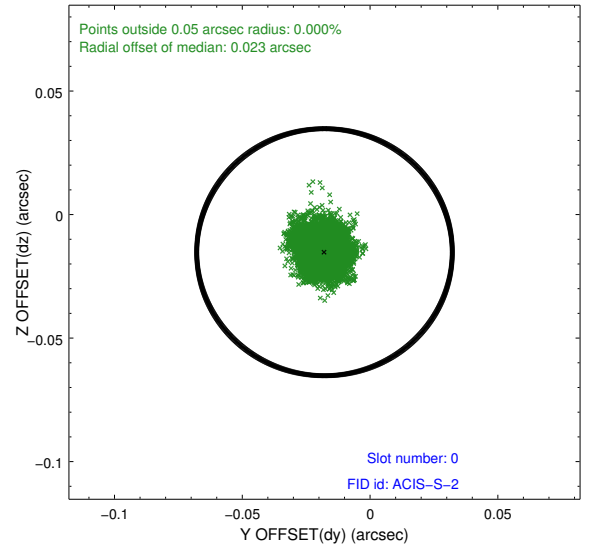
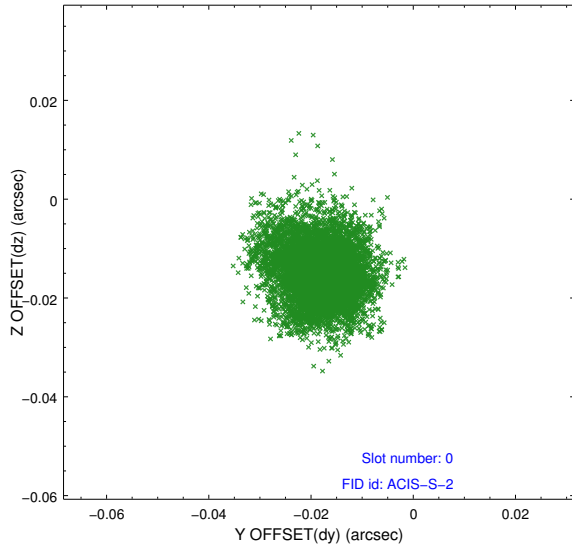


2.4.5 Slot 7

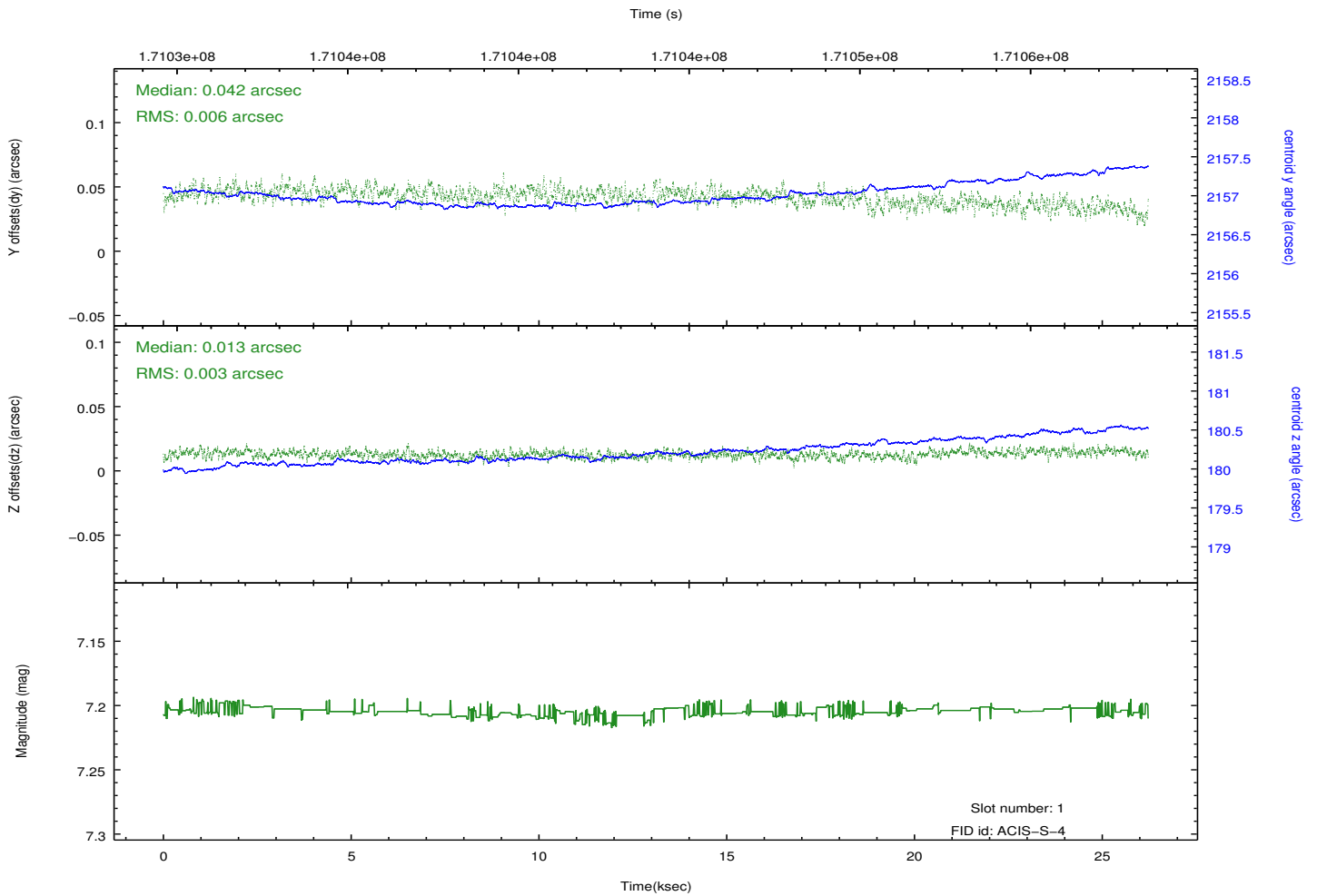
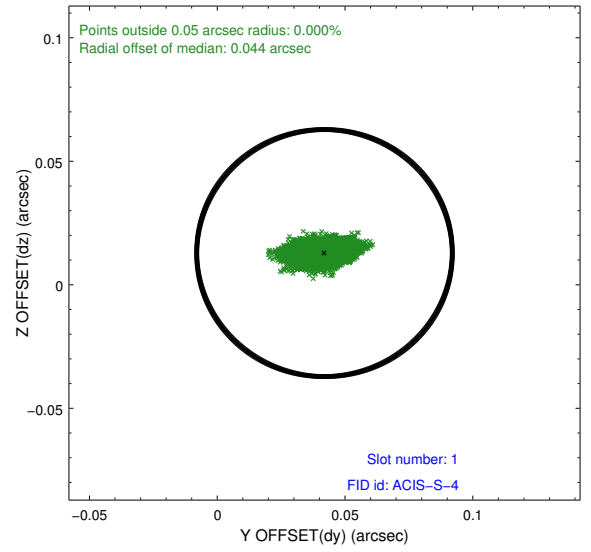
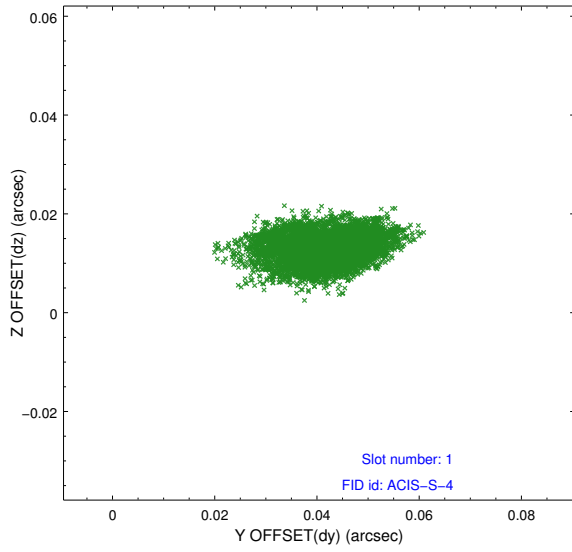


2.5 FID Slots

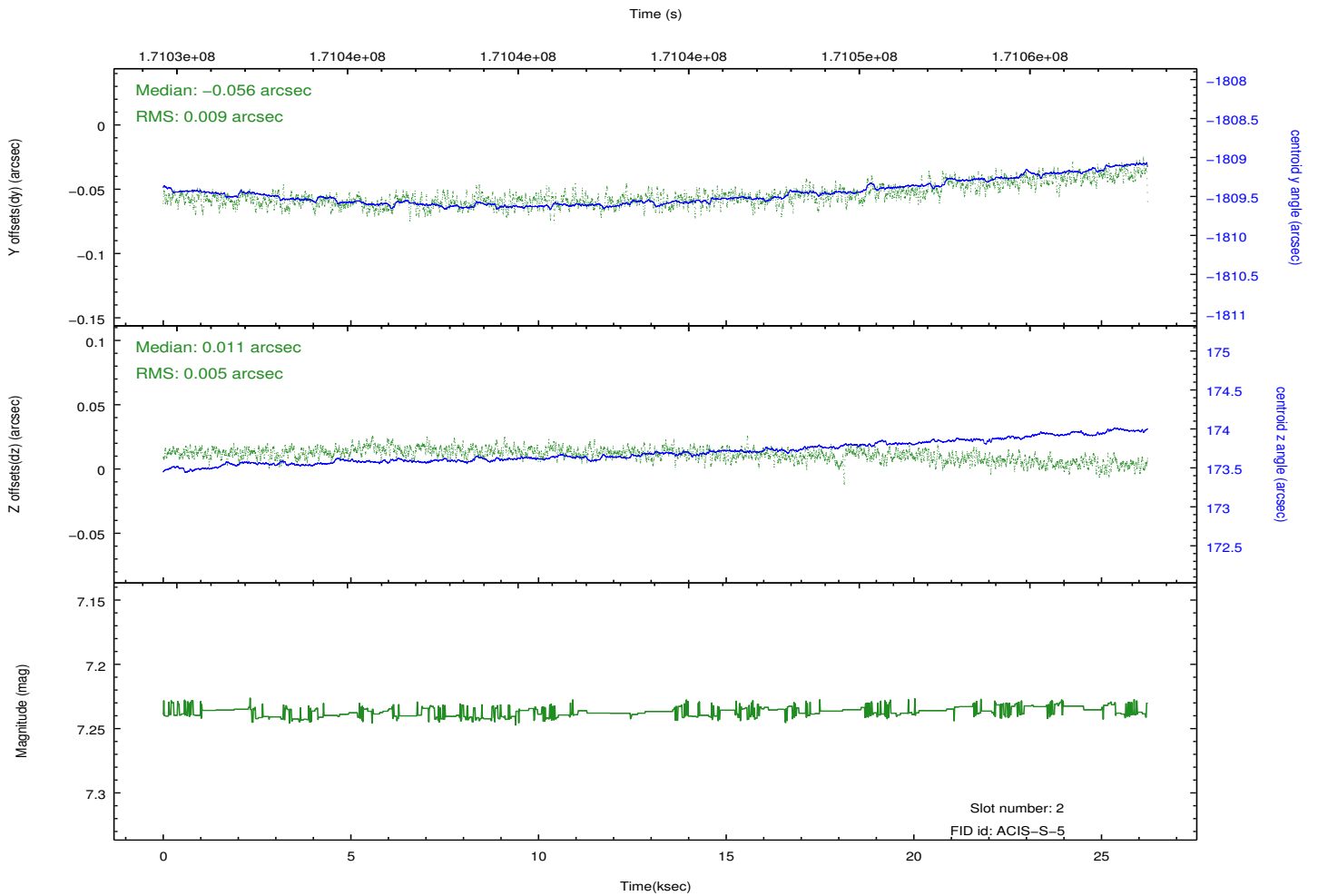
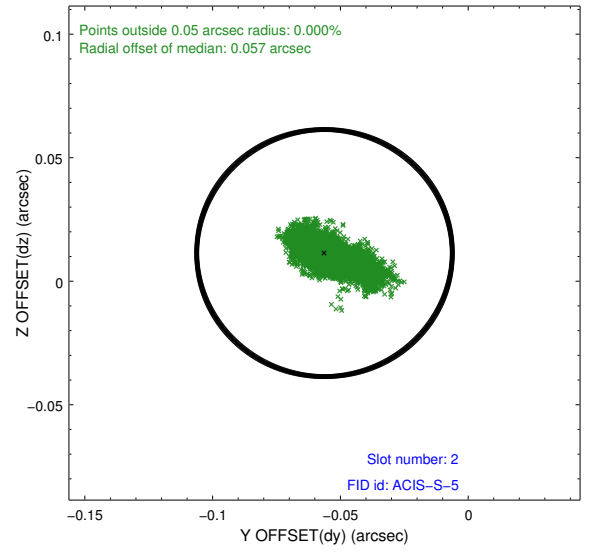
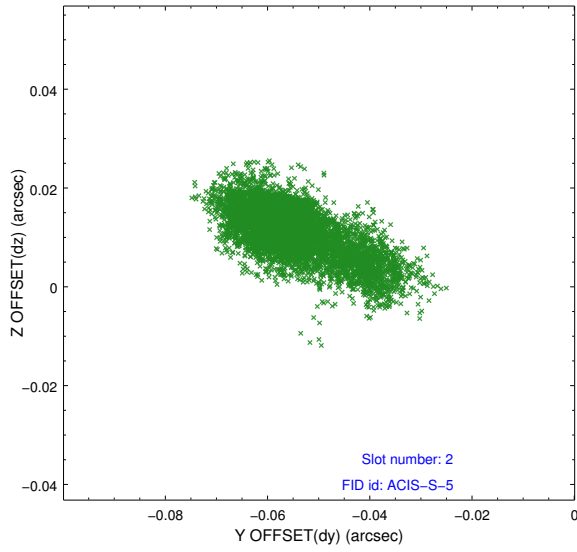
2.5.1 Slot 0



2.5.2 Slot 1



2.5.3 Slot 2



A Summary

A.1 Status

V&V Scientist	Jen Lauer
V&V Date (YYYY-MM-DD)	2012.11.15
V&V Edition	1
V&V Disposition and Status	OK
V&V Charge Time	26.108

A.2 Comments