

V&V Reference Report

L2 ASCDS Version : 8.4.5

Observation 4190 - L2 Version 3
Chandra X-Ray Center

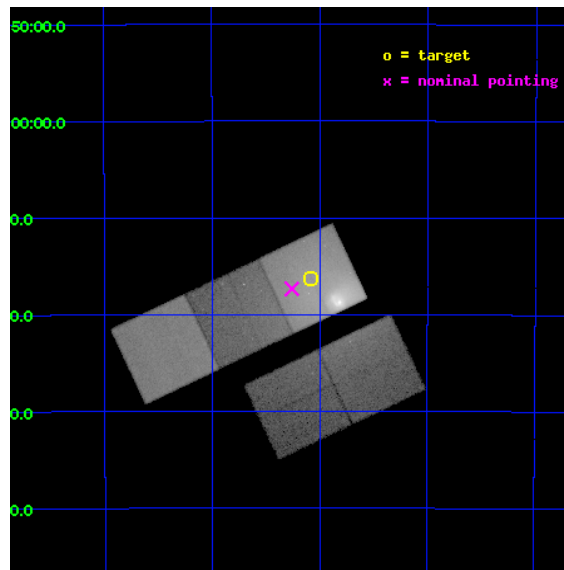
L2 Processing Date : Oct 26 2012

Contents

1	Front	2
2	OBI	3
2.1	OBI	3
2.1.1	Images	3
2.1.2	Bias	3
2.1.3	Parameters	4
2.1.4	Events	4
2.2	Compared Parameters	5
2.3	Aspect	6
2.4	Star Slots	9
2.4.1	Slot 3	9
2.4.2	Slot 4	10
2.4.3	Slot 5	11
2.4.4	Slot 6	12
2.4.5	Slot 7	13
2.5	FID Slots	14
2.5.1	Slot 0	14
2.5.2	Slot 1	15
2.5.3	Slot 2	16
A	Summary	17
A.1	Status	17
A.2	Comments	17

1 Front

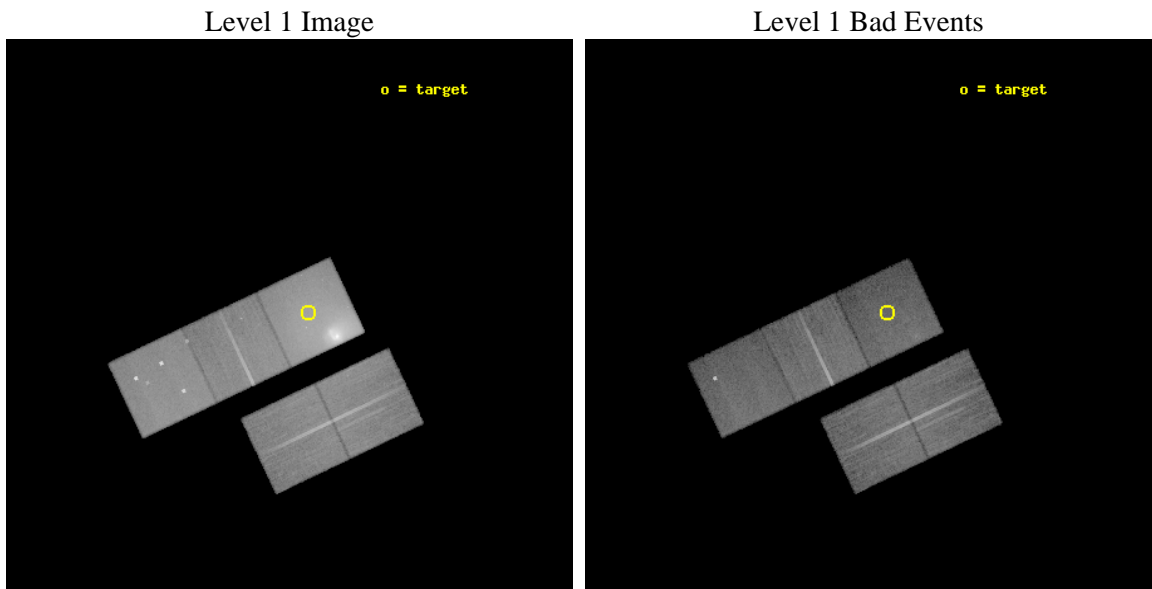
seq_num	800346	Sequence number
obs_id	4190	Observation id
title	INTRACLUSTER GAS BULK VELOCITIES IN THE CENTAURUS CLUSTER	Proposal
observer	Dr renato dupke	Principal investigator
object	ABELL 3526	Source name
dtcycle	0	
cycle	P	events from which exps? Prim/Second/Both
ra_targ	192.270833	Observer's specified target RA [deg]
dec_targ	-41.271389	Observer's specified target Dec [deg]
ra_nom	192.31472157481	Nominal RA [deg]
dec_nom	-41.288965007787	Nominal Dec [deg]
roll_nom	334.66359058146	Nominal Roll [deg]
revision	3	Processing version of data
ontime	34719.999933213	Sum of GTIs [s]
livetime	34266.357573593	Livetime [s]
ontime2	34713.717962772	Sum of GTIs [s]
ontime3	34719.999933213	Sum of GTIs [s]
ontime5	34719.999933213	Sum of GTIs [s]
ontime6	34716.858943015	Sum of GTIs [s]
ontime7	34719.999933213	Sum of GTIs [s]
l2events	739940	Number of level 2 events



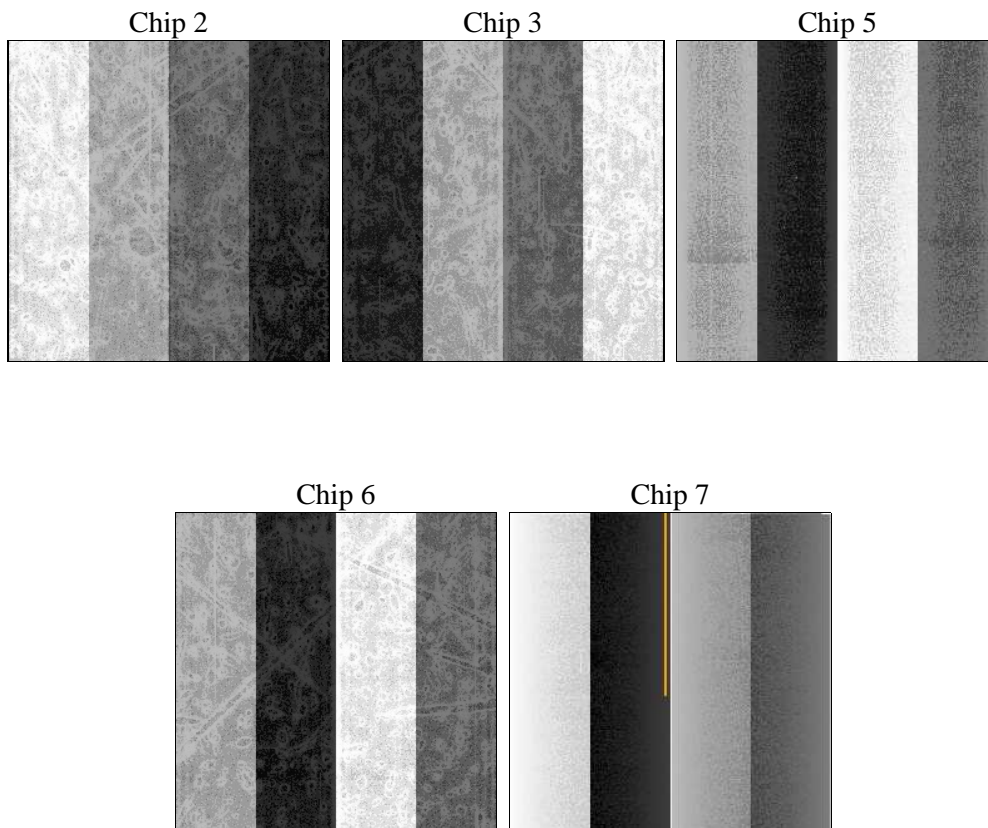
2 OBI

2.1 OBI

2.1.1 Images



2.1.2 Bias



2.1.3 Parameters

obi_num	1	Obi number	sched_exp_time	34700.000000	[s] Scheduled observation exposure time
ascdsver	8.4.5	Processing system revision	ontime	34719.999933213	Sum of GTIs [s]
caldbver	4.5.2	 	ontime2	34713.717962772	Sum of GTIs [s]
date	2012-10-26T18:29:19	Date and time of file creation	ontime3	34719.999933213	Sum of GTIs [s]
revision	3	Processing version of data	ontime5	34719.999933213	Sum of GTIs [s]
			ontime6	34716.858943015	Sum of GTIs [s]
			ontime7	34719.999933213	Sum of GTIs [s]
			l1events	1548941	Number of level 1 events

2.1.4 Events

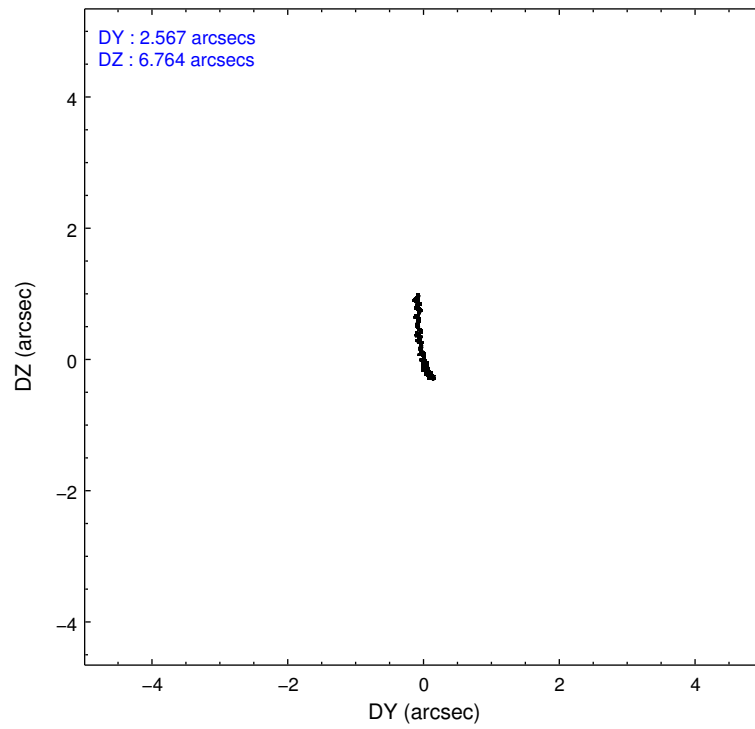
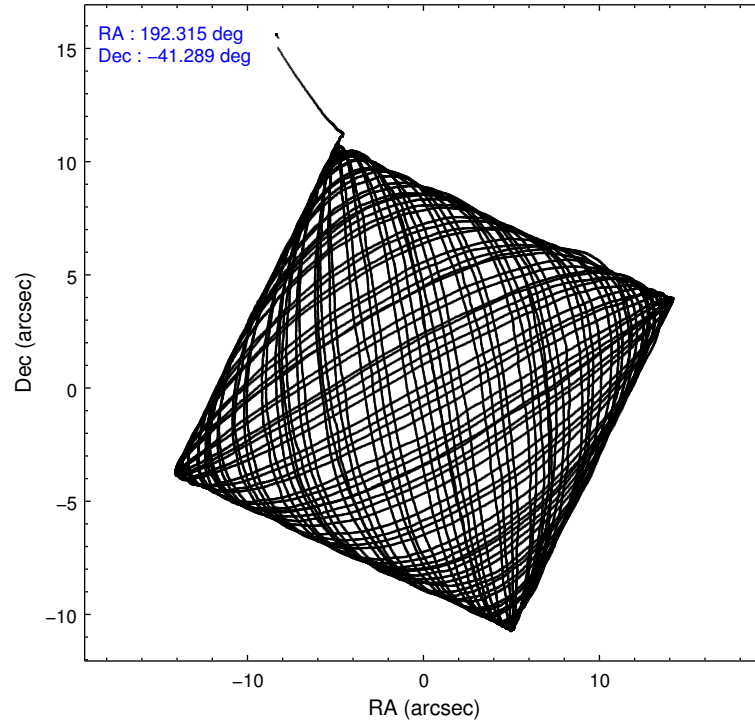
	ccd 2	ccd 3	ccd 5	ccd 6	ccd 7
level 1 events	213194	224848	288162	247687	575050
rejected events	172131	172239	133920	172805	119414
rejected %	80%	76%	46%	69%	20%

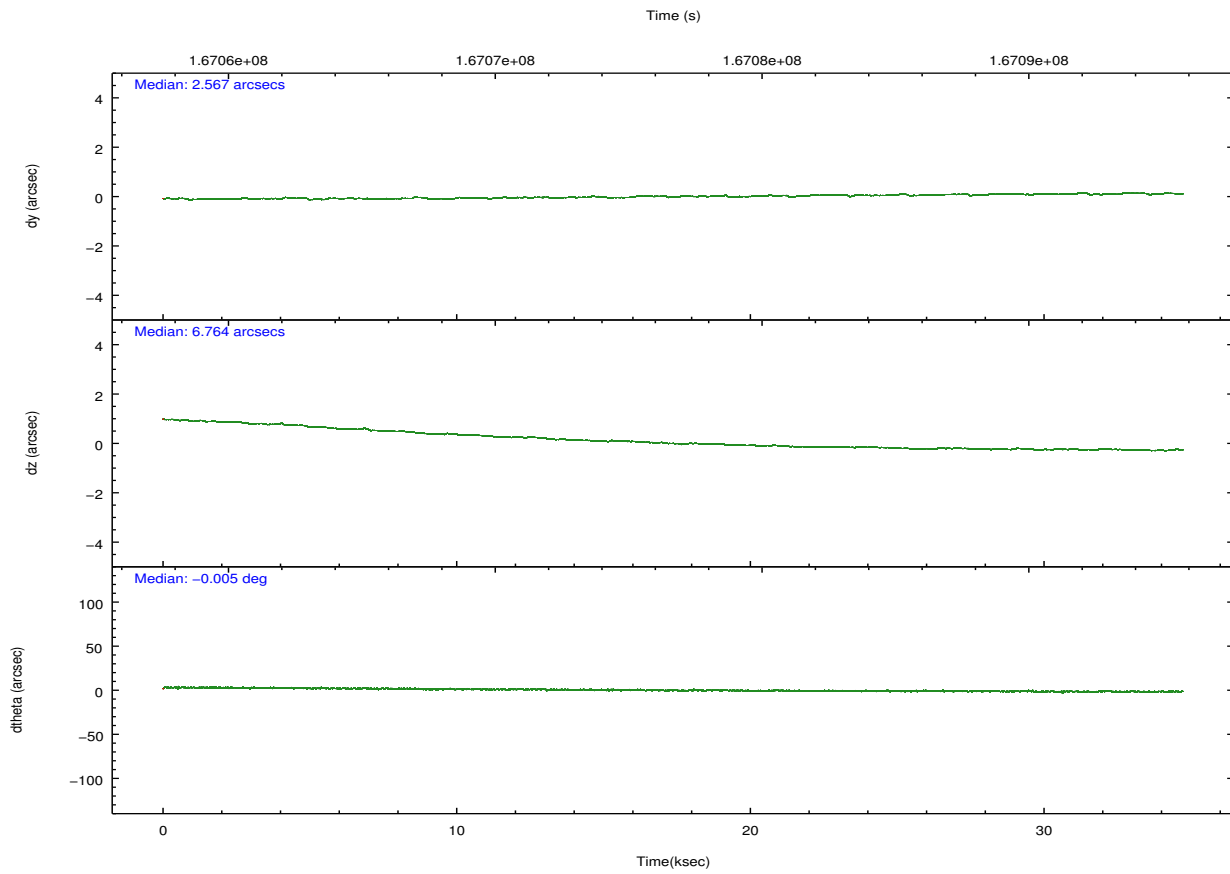
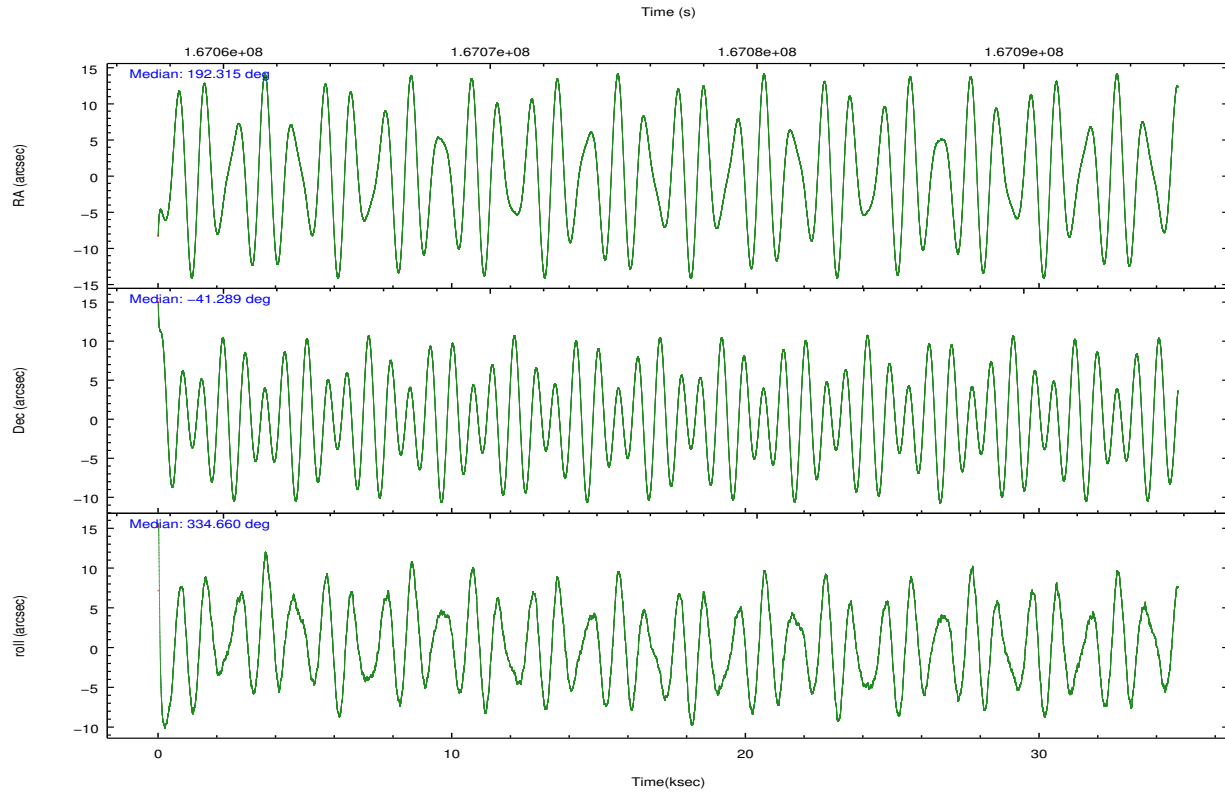
	ccd 2	ccd 3	ccd 5	ccd 6	ccd 7
grade 0 events	28210	38469	31892	54878	117976
	13%	17%	11%	22%	20%
grade 1 events	202	216	246	249	279
	0%	0%	0%	0%	0%
grade 2 events	6876	7572	45109	10080	117628
	3%	3%	15%	4%	20%
grade 3 events	3025	3367	8171	4047	52790
	1%	1%	2%	1%	9%
grade 4 events	3085	3353	7444	3979	52034
	1%	1%	2%	1%	9%
grade 5 events	6117	6926	22982	7414	23748
	2%	3%	7%	2%	4%
grade 6 events	4212	4528	66621	6045	121961
	1%	2%	23%	2%	21%
grade 7 events	161467	160417	105697	160995	88634
	75%	71%	36%	64%	15%

2.2 Compared Parameters

Parameter	Planned	Actual	Parameter	Planned	Actual
Instrument	ACIS	ACIS	Obspar format version number	7	7
Detector	ACIS-23567	ACIS-23567	Obspar file type	PREDICTED	ACTUAL
Grating	NONE	NONE	Obspar update status	NONE	UPDATED
Data mode	VFAINT	VFAINT	Number of optional ACIS chips dropped	0	0
Observation mode	POINTING	POINTING	On-chip summing requested	N	N
[deg] Pointing RA	192.278666	192.3147215748141	Subarray requested	NONE	NONE
[deg] Pointing Dec	-41.291550	-41.28896500778693	Alternating exposures requested	N	N
[deg] Pointing Roll	334.483166	334.6635905814595	[s] Primary exposure time	0.000000	3.1
[mm] SIM focus pos	-0.684267	-0.6828225247311905			
[mm] SIM defocus	0	0.001444936568705701			
[mm] SIM translation stage pos	-190.132523	-190.1400660498719			
[mm] SIM translation stage offset	0	0.00754346686406393			
[s] Observation start time (MET)	167059326.184000	167058177.74534			
Observation start date	2003-04-18T13:21:02	2003-04-18T13:02:57			
[s] Observation end time (MET)	167094026.184000	167094160.37187			
Observation end date	2003-04-18T22:59:22	2003-04-18T23:02:40			
Read mode	TIMED	TIMED			

2.3 Aspect



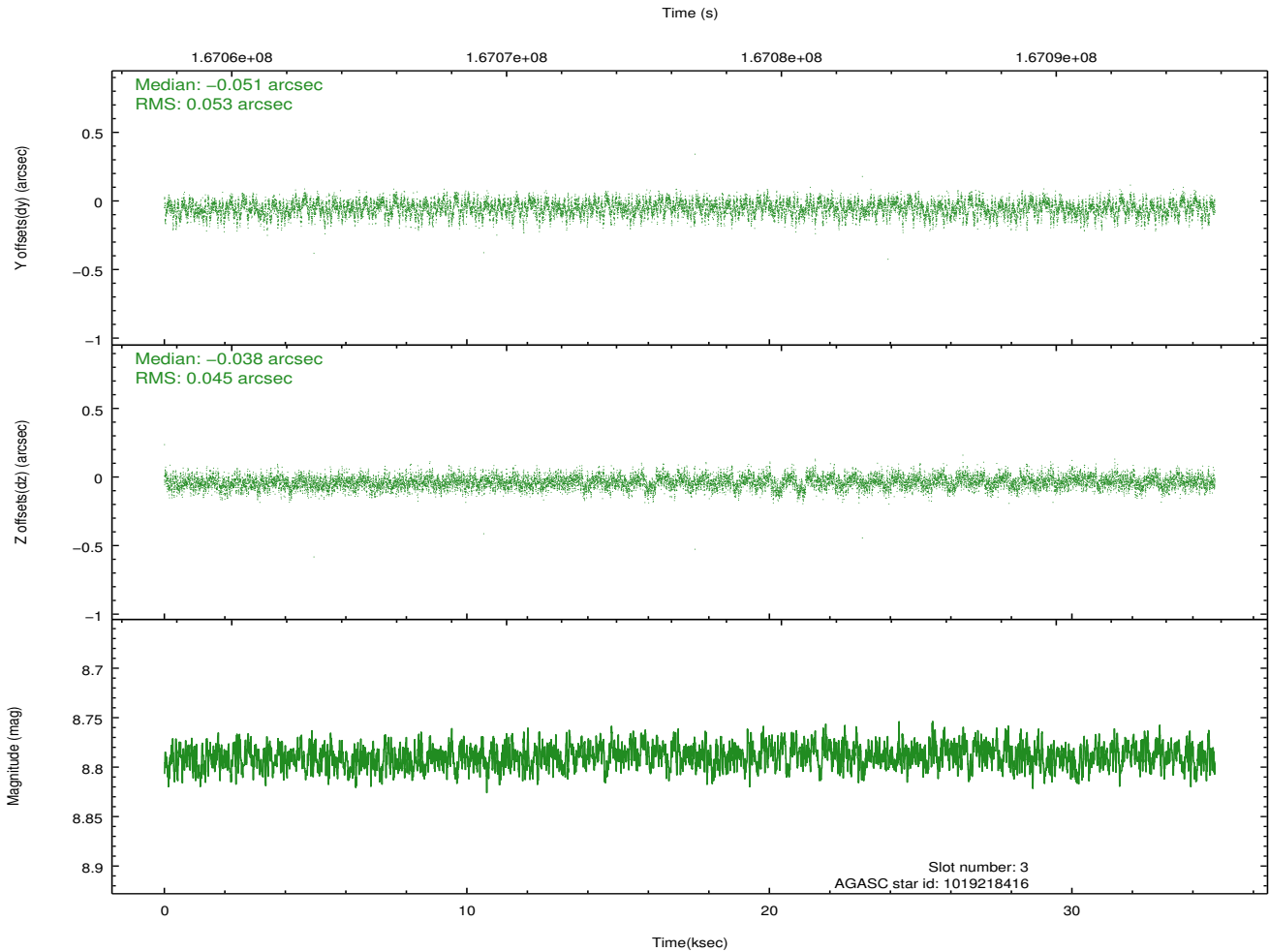
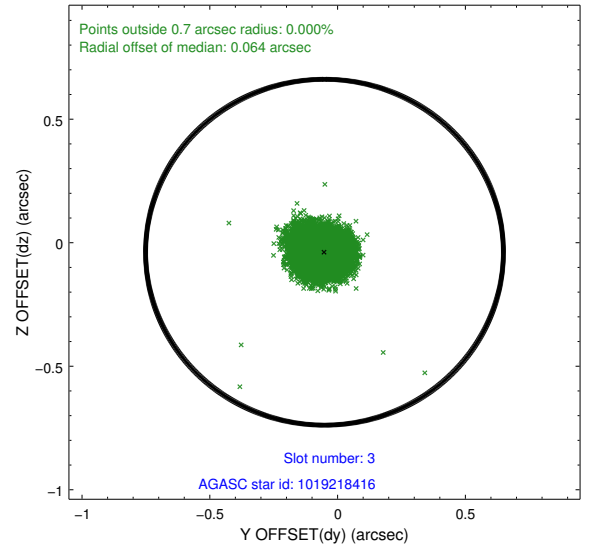
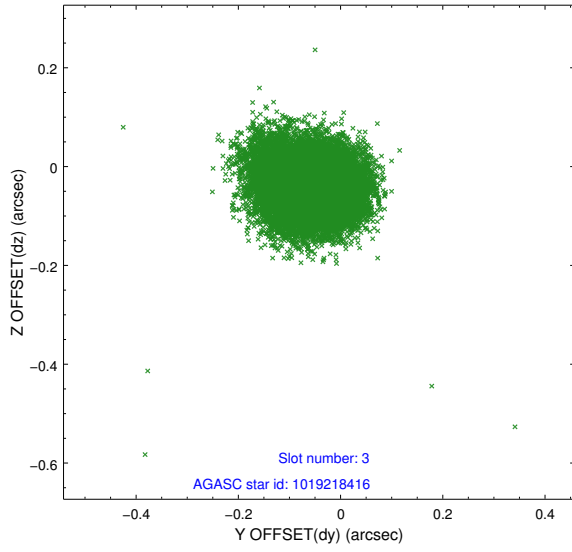


Slot Statistics

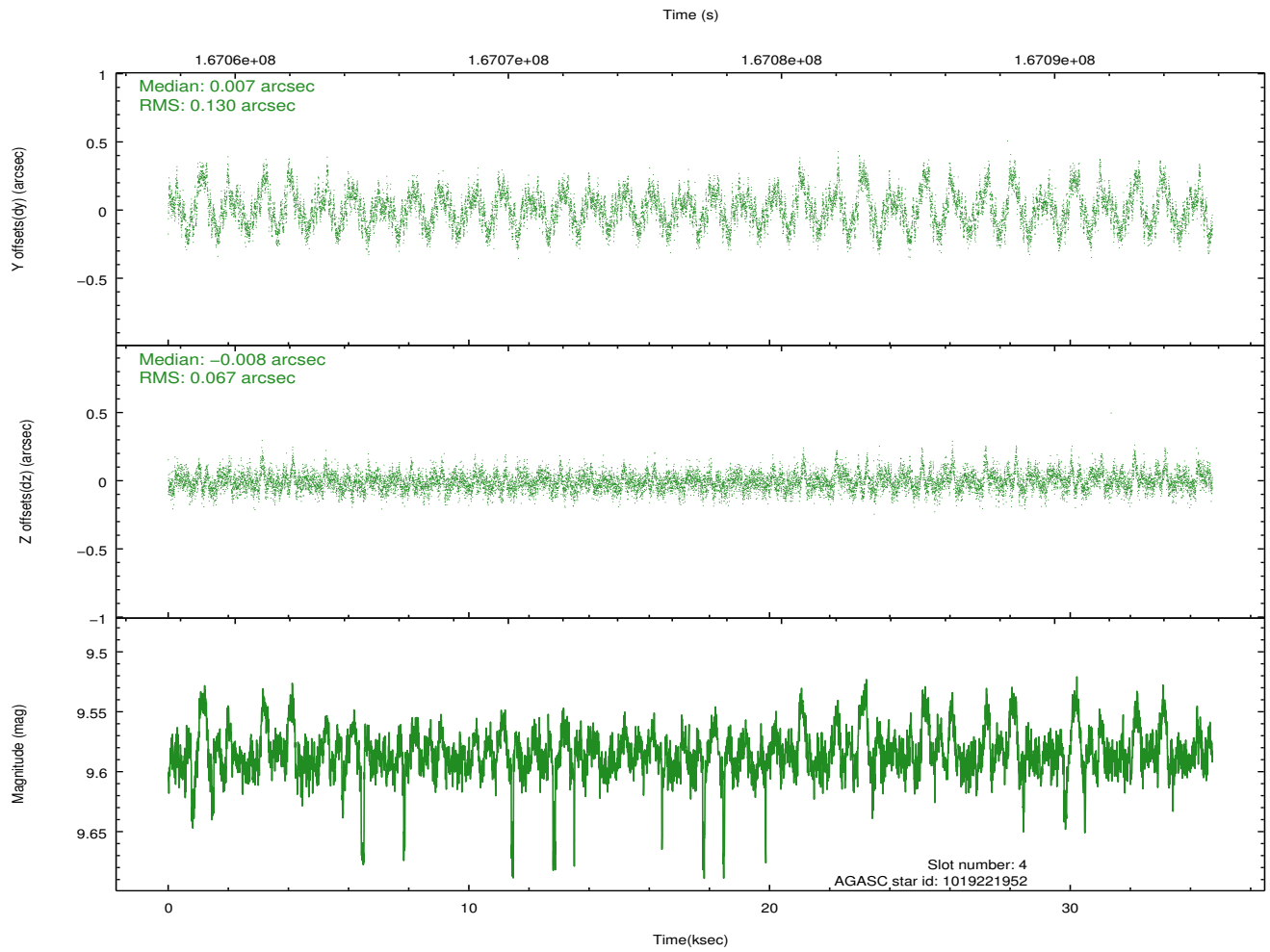
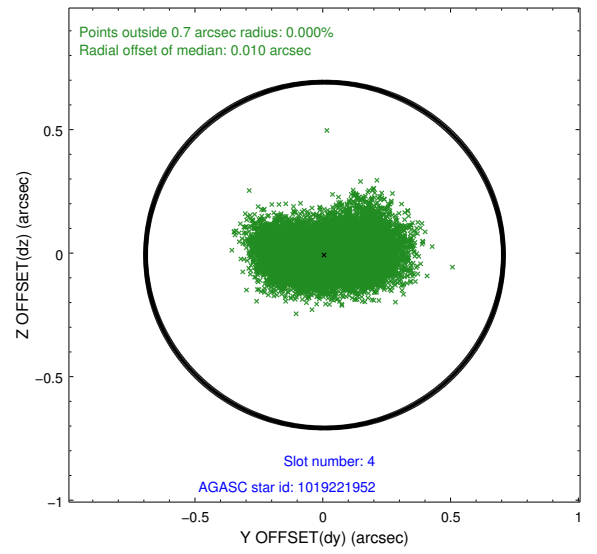
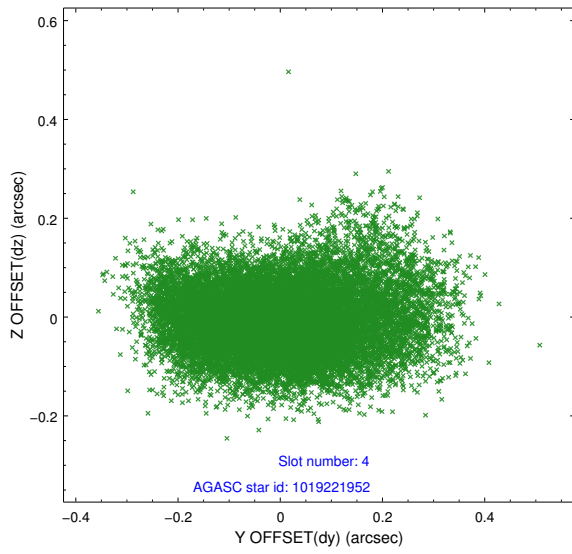
slot	status	id	mag	n_pts	med_dy	med_dz	dr1	dr2	ra	dec	mean_y	mean_z
0	FID	ACIS-S-2	7.11	8469	-0.033	-0.000	0.010	0.018	0.000000	0.000000	-755.21	-1728.08
1	FID	ACIS-S-4	7.20	8467	-0.005	0.016	0.010	0.017	0.000000	0.000000	2158.05	180.41
2	FID	ACIS-S-5	7.24	8469	0.006	-0.007	0.009	0.014	0.000000	0.000000	-1807.98	174.06
3	GUIDE	1019218416	8.79	16939	-0.051	-0.038	0.073	0.120	193.142850	-40.941016	1582.32	2140.65
4	GUIDE	1019221952	9.59	16911	0.007	-0.008	0.155	0.260	192.906873	-41.032646	1140.96	1570.66
5	GUIDE	1019615024	8.47	16927	-0.008	0.015	0.066	0.103	191.349086	-41.365736	-2145.33	-1335.14
6	GUIDE	1019740808	8.79	16932	0.073	-0.078	0.106	0.164	192.766173	-41.251253	1129.95	695.83
7	GUIDE	1019743536	8.65	16933	-0.010	0.101	0.077	0.135	192.632057	-41.696442	1486.41	-907.83

2.4 Star Slots

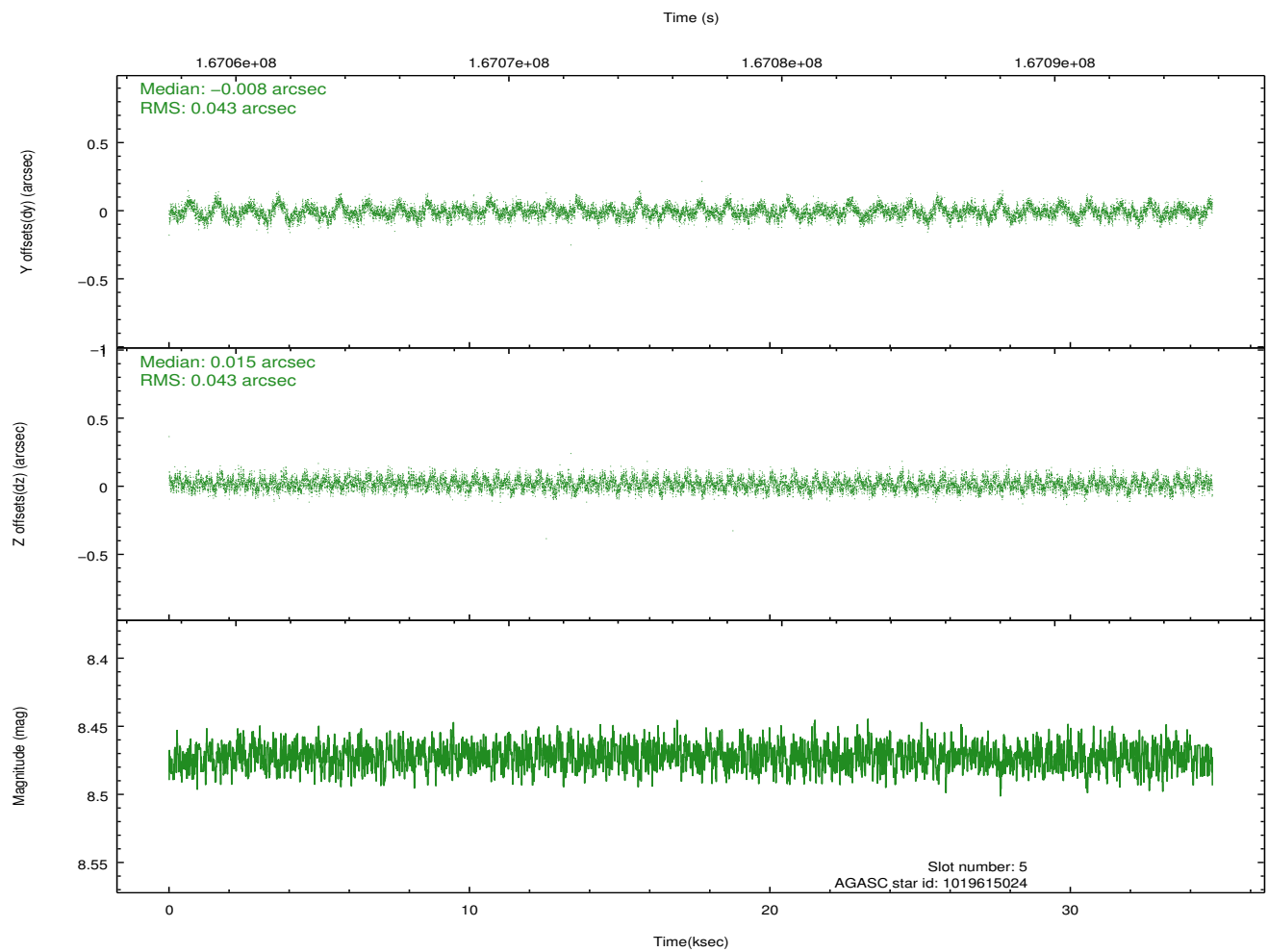
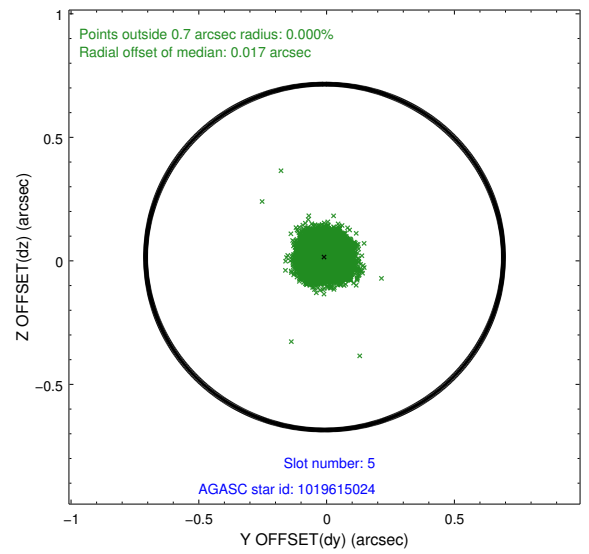
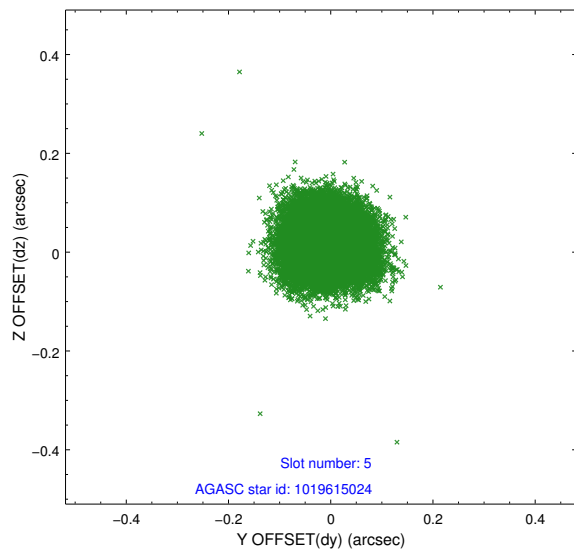
2.4.1 Slot 3



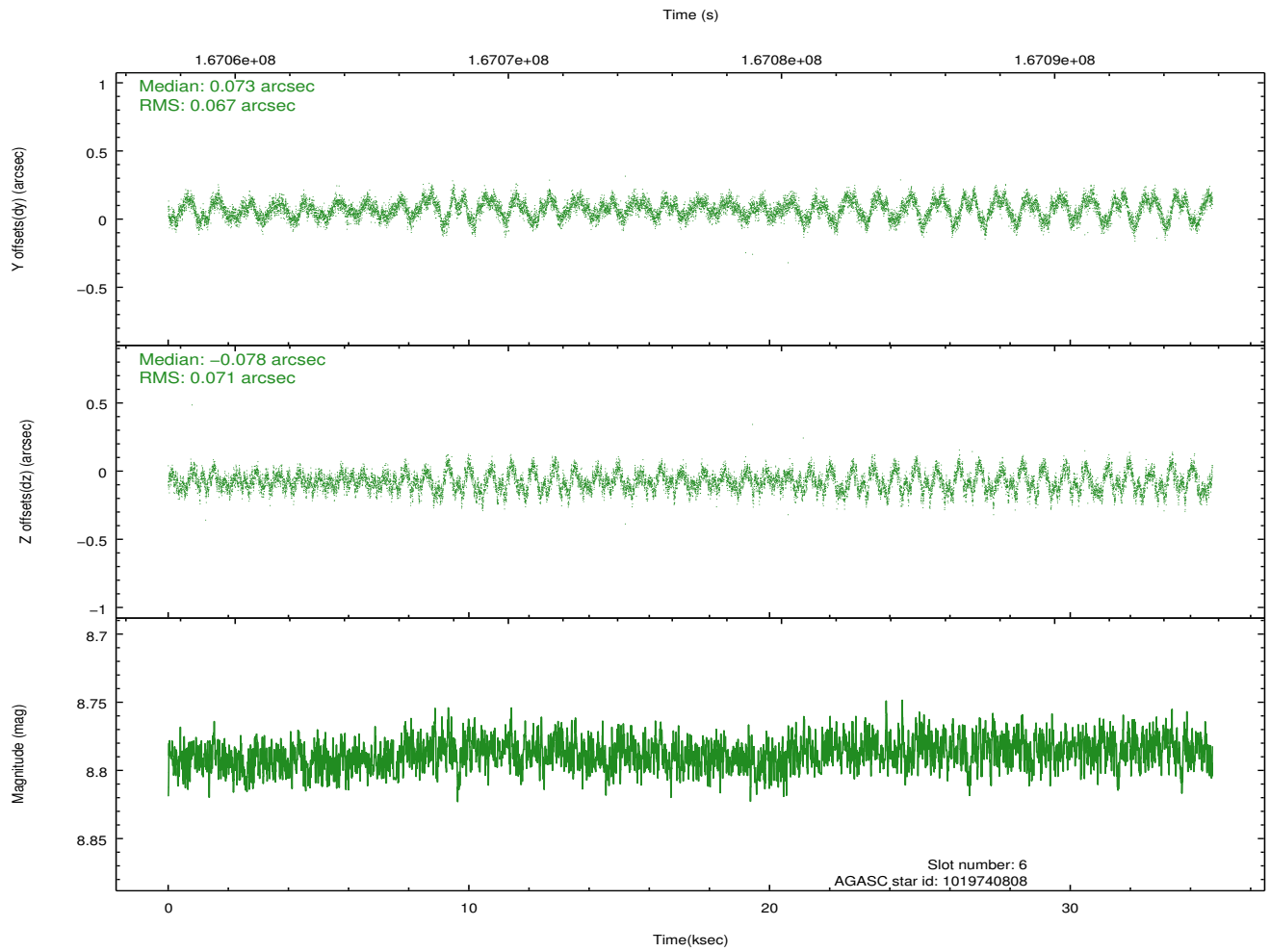
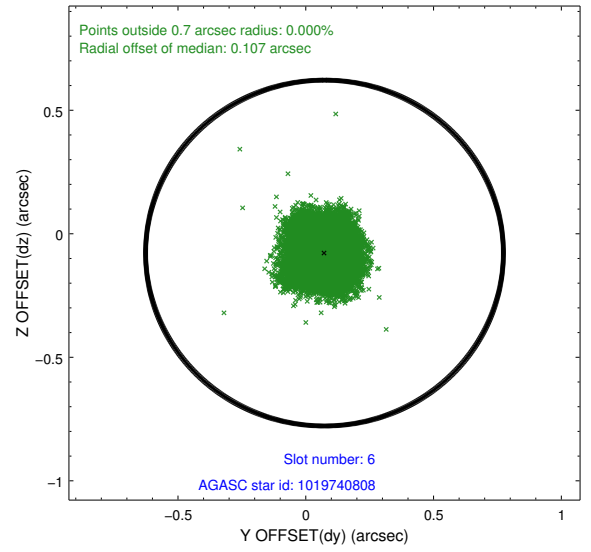
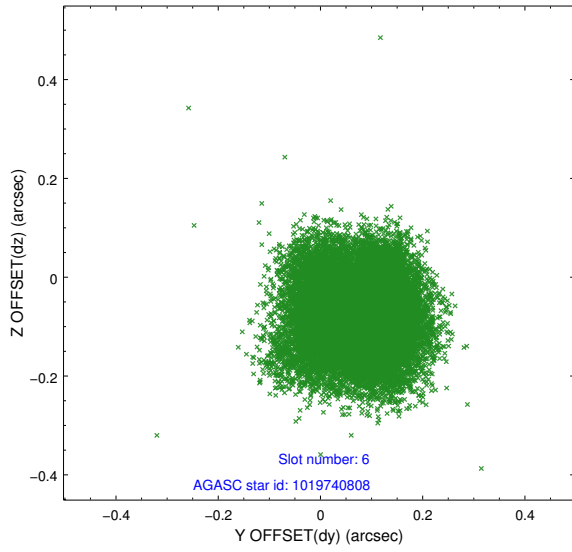
2.4.2 Slot 4



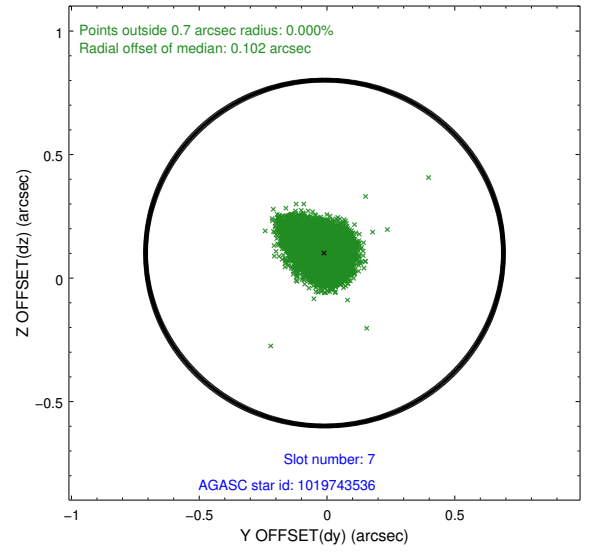
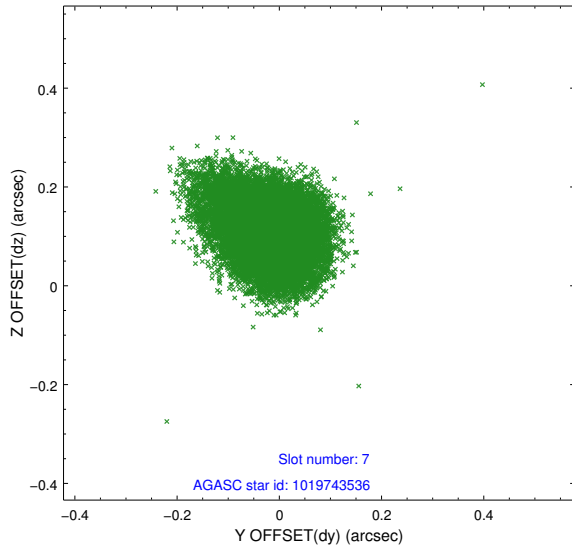
2.4.3 Slot 5



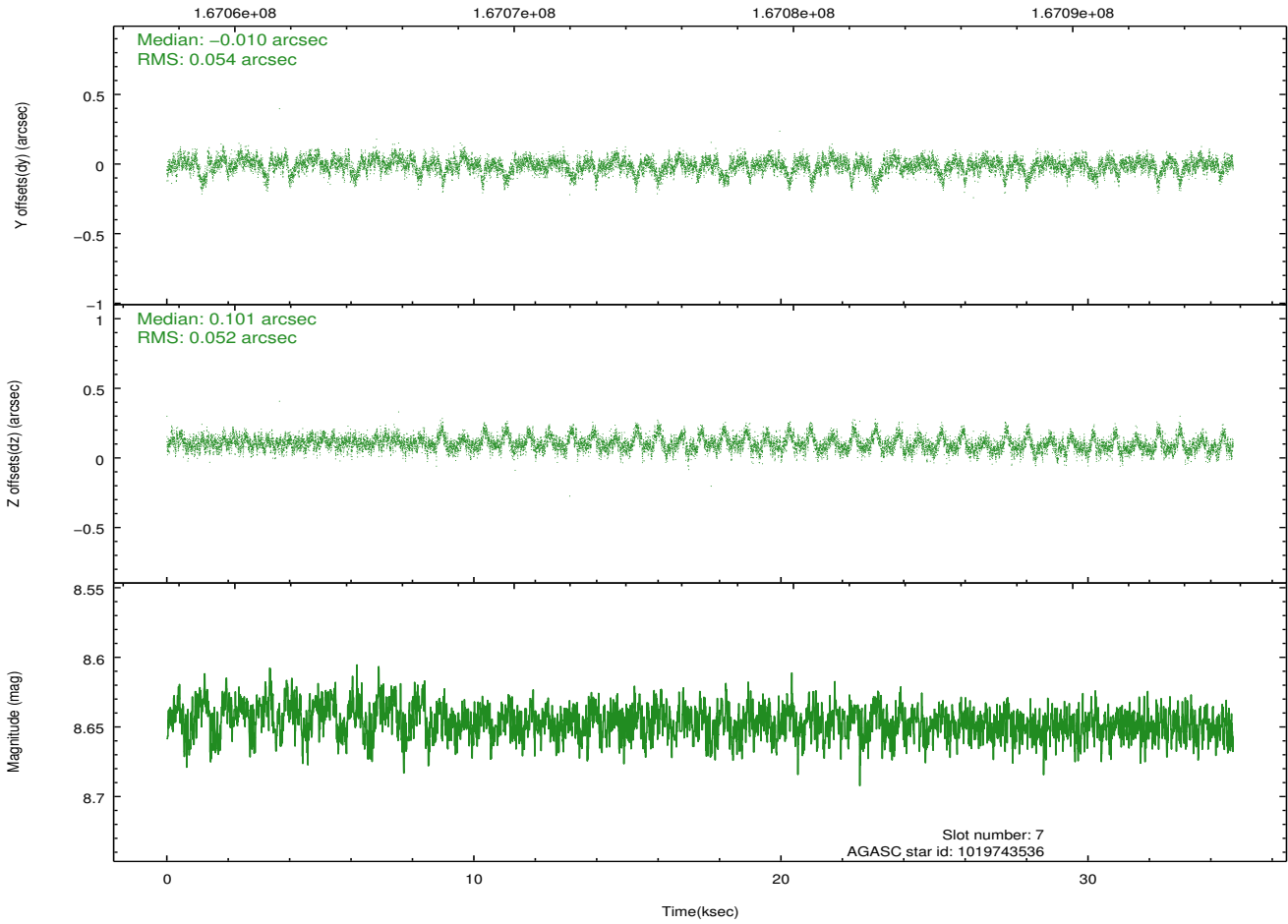
2.4.4 Slot 6



2.4.5 Slot 7

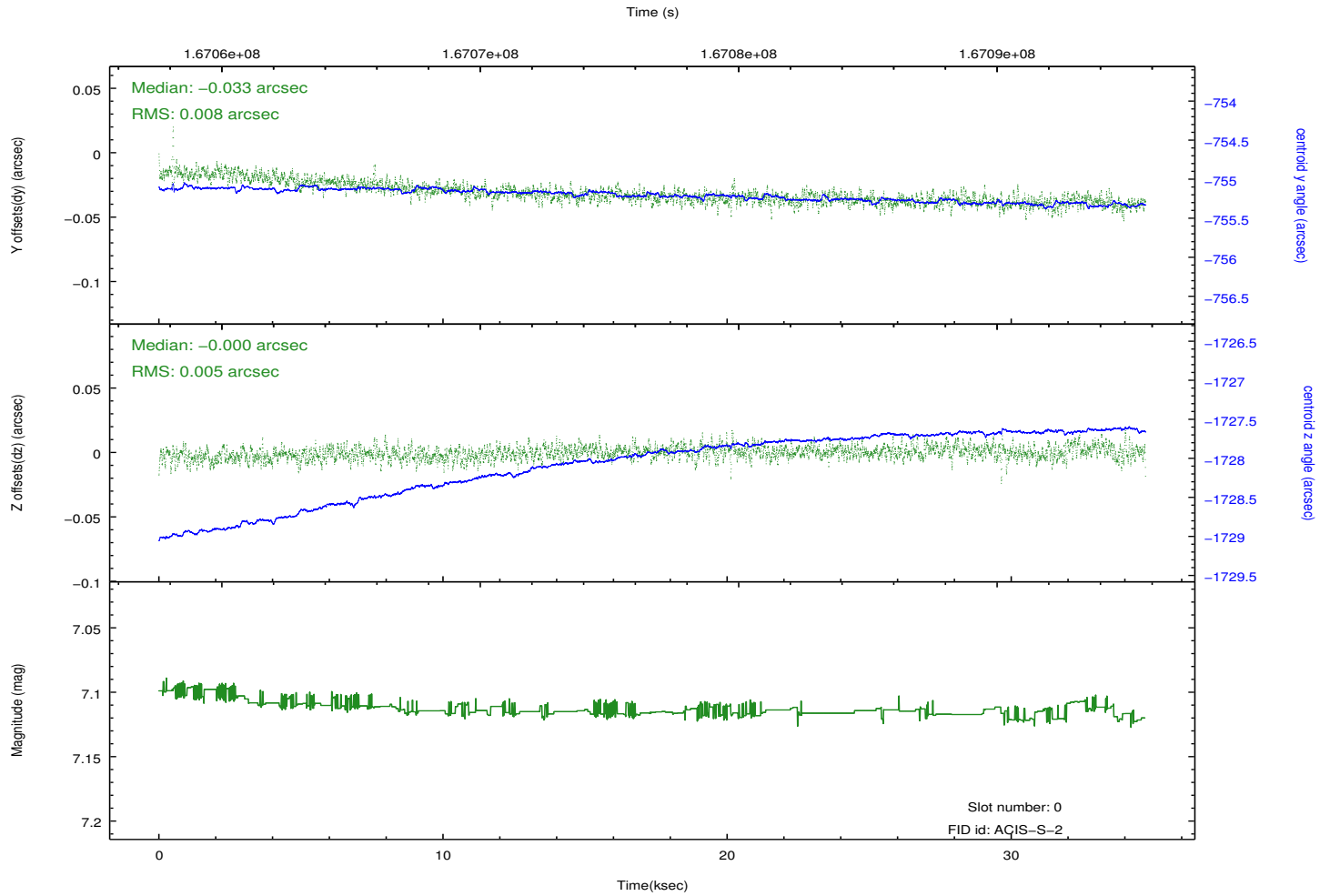
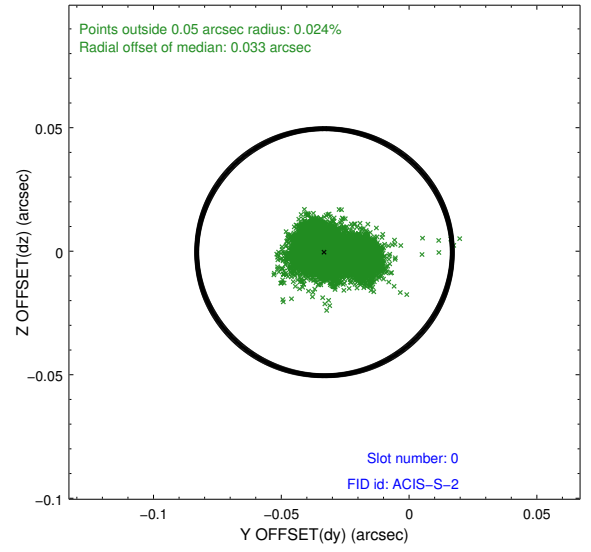
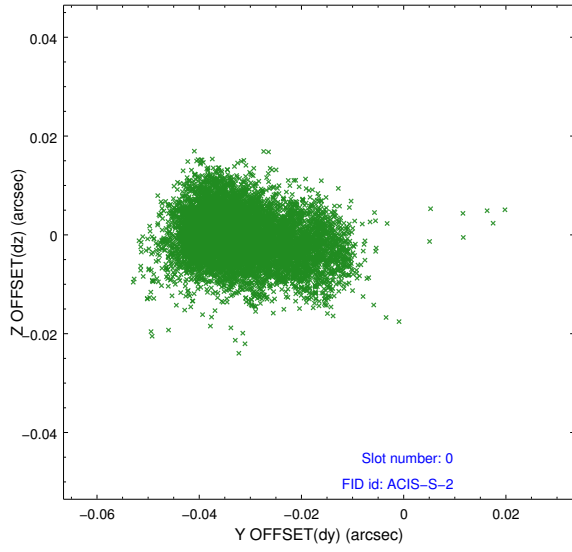


Time (s)

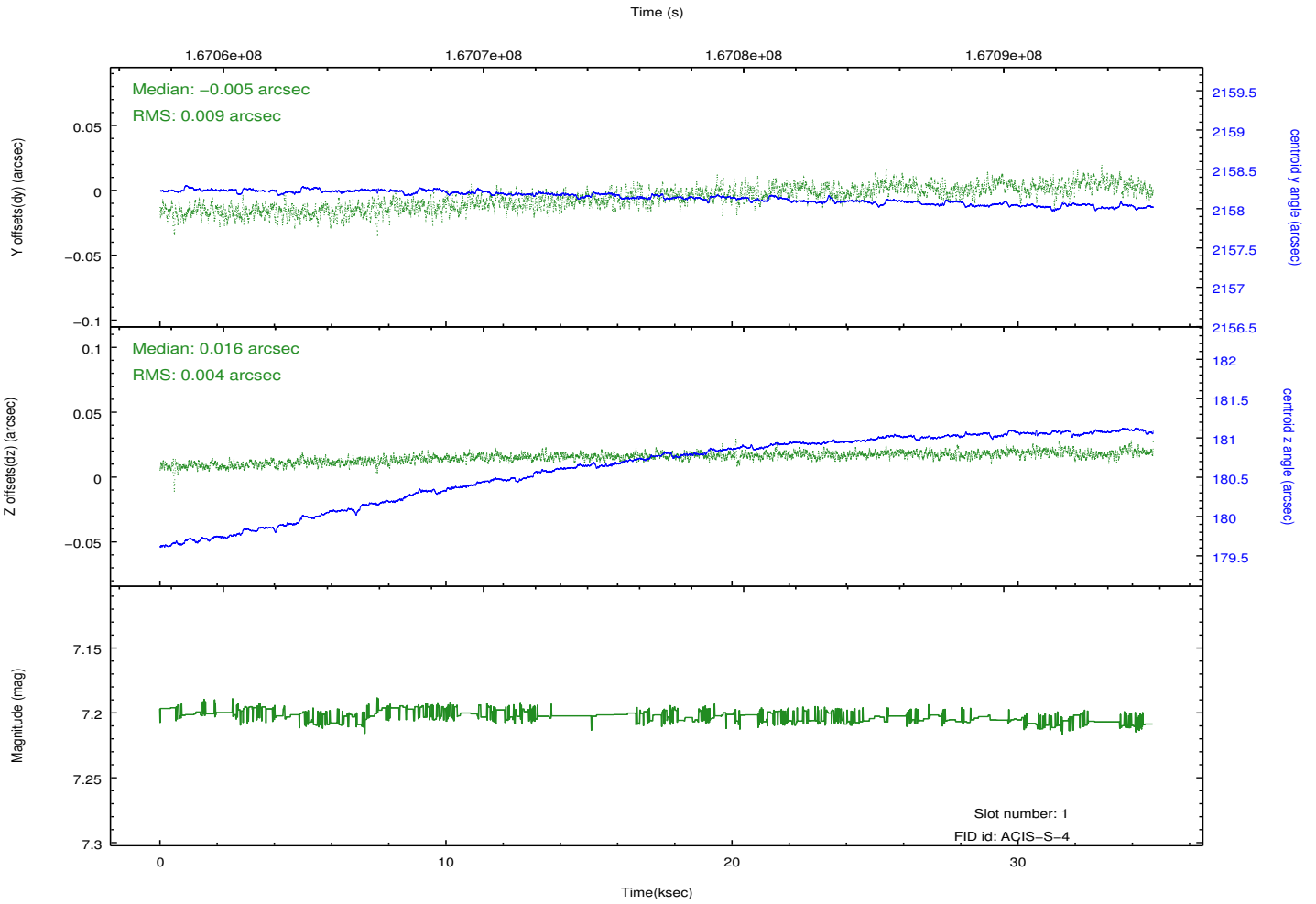
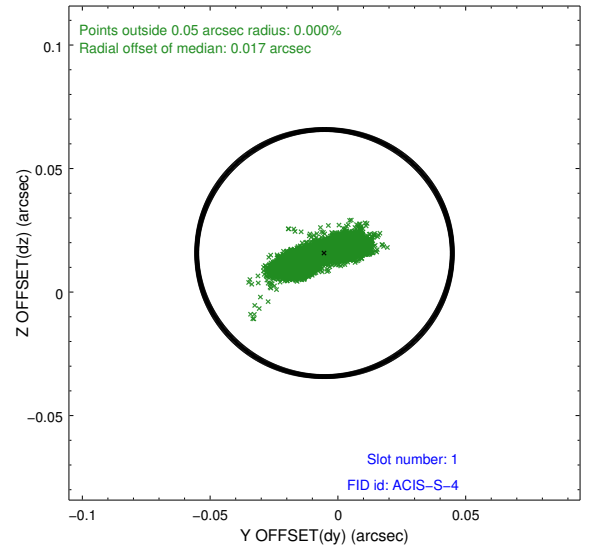
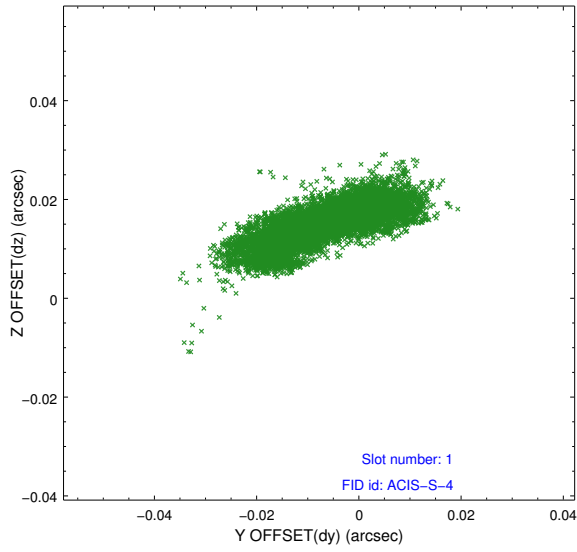


2.5 FID Slots

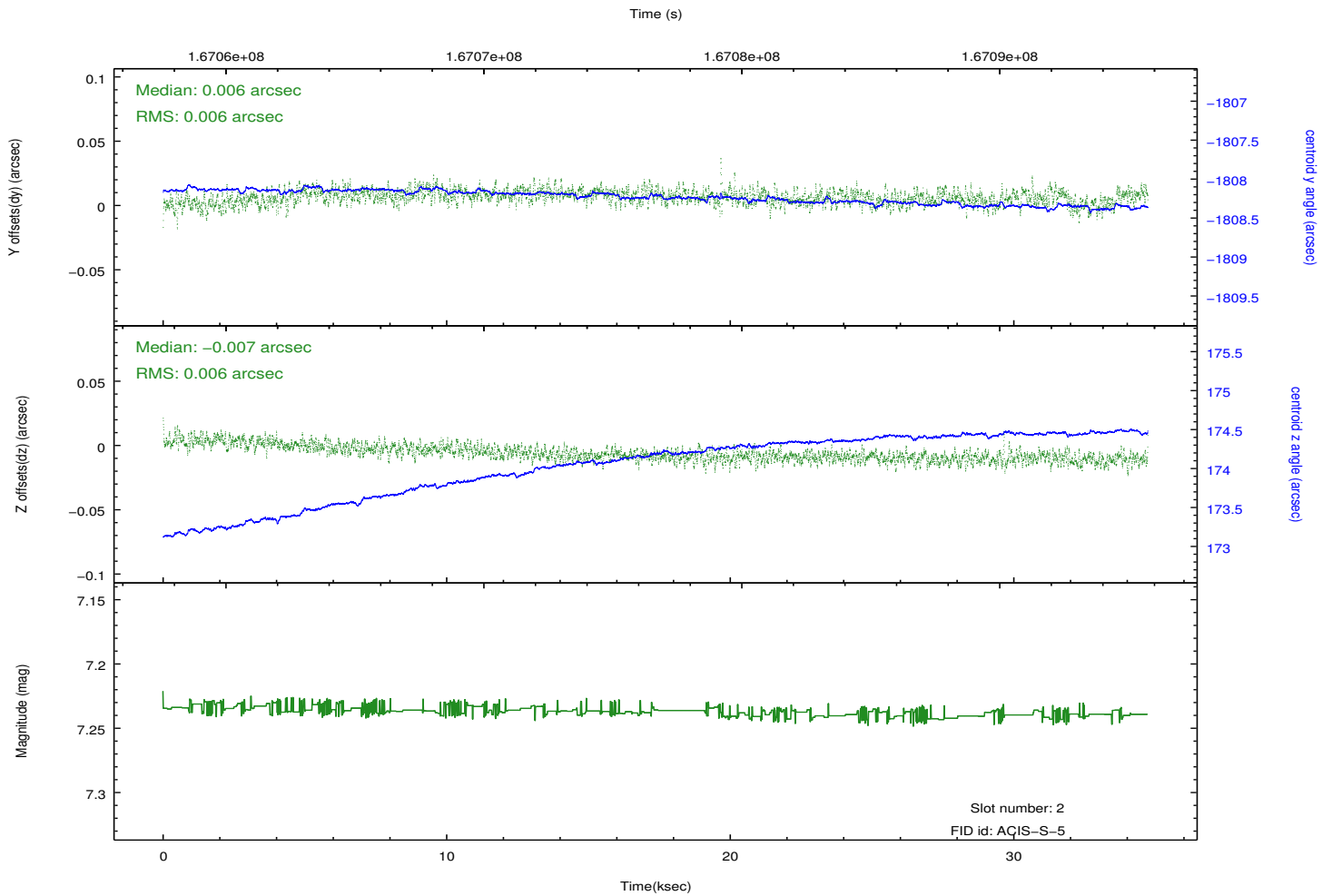
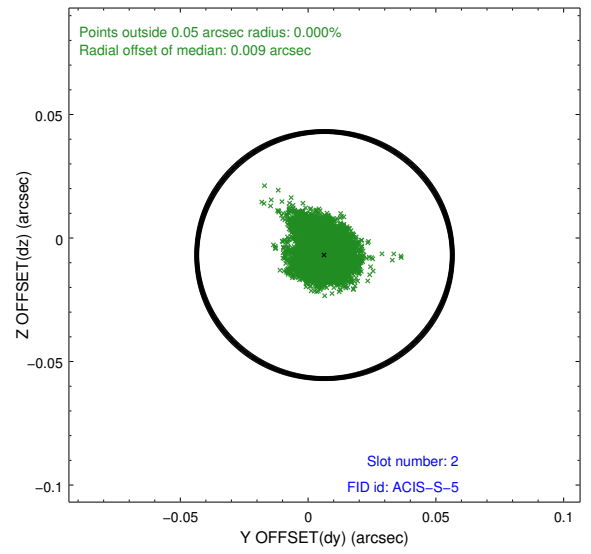
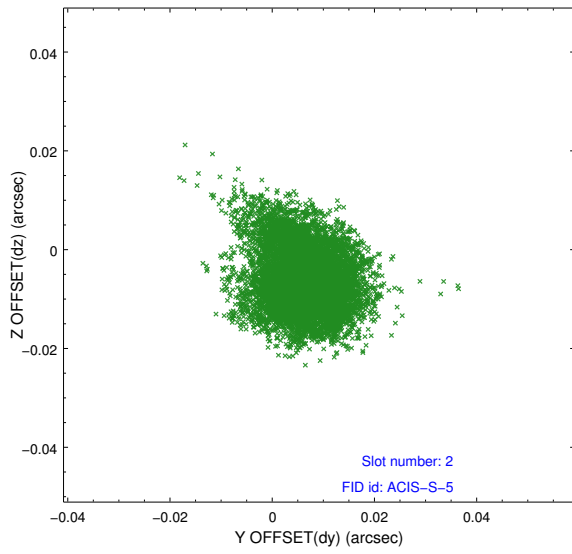
2.5.1 Slot 0



2.5.2 Slot 1



2.5.3 Slot 2



A Summary

A.1 Status

V&V Scientist	Jen Lauer
V&V Date (YYYY-MM-DD)	2012.11.14
V&V Edition	1
V&V Disposition and Status	OK
V&V Charge Time	34.719

A.2 Comments