

V&V Reference Report

L2 ASCDS Version : 8.4.5

Observation 4410 - L2 Version 4
Chandra X-Ray Center

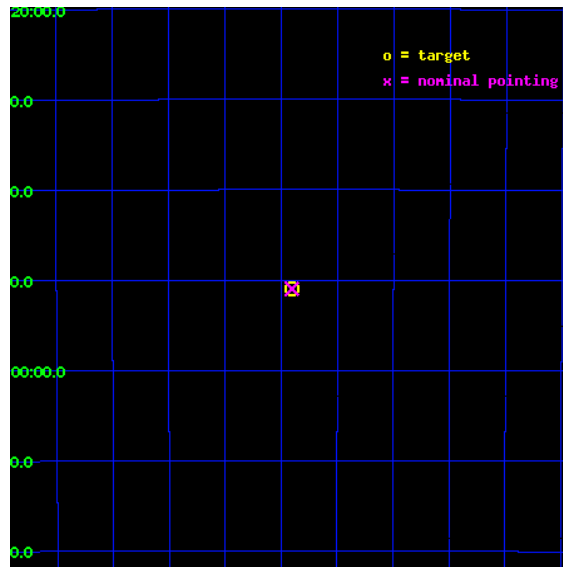
L2 Processing Date : Oct 22 2012

Contents

1	Front	2
2	OBI	3
2.1	OBI	3
2.1.1	Images	3
2.1.2	Parameters	4
2.1.3	Events	4
2.2	Compared Parameters	5
2.3	Star Slots	6
2.4	FID Slots	6
A	Summary	7
A.1	Status	7
A.2	Comments	7

1 Front

seq_num	100038	Sequence number
obs_id	4410	Observation id
title	A SEARCH FOR SOFT X-RAY AURORAS ON EARTH	Proposal title
observer	DR. G. GLADSTONE	Principal investigator
object	EARTH	Source name
ra_targ	81.6	Observer's specified target RA [deg]
dec_targ	-32.85	Observer's specified target Dec [deg]
ra_nom	81.600795601173	Nominal RA [deg]
dec_nom	-32.849580849245	Nominal Dec [deg]
roll_nom	300.9970746173	Nominal Roll [deg]
revision	4	Processing version of data
ontime	0.0	[s]
livetime	0.0	Ontime multiplied by DTCOR
l2events	0	Number of level 2 events

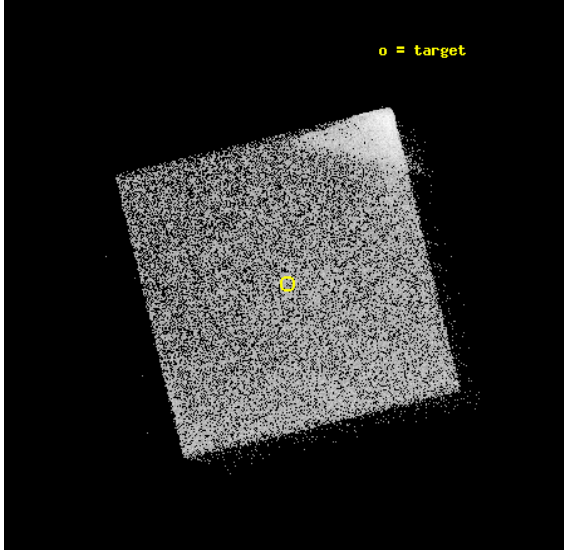


2 OBI

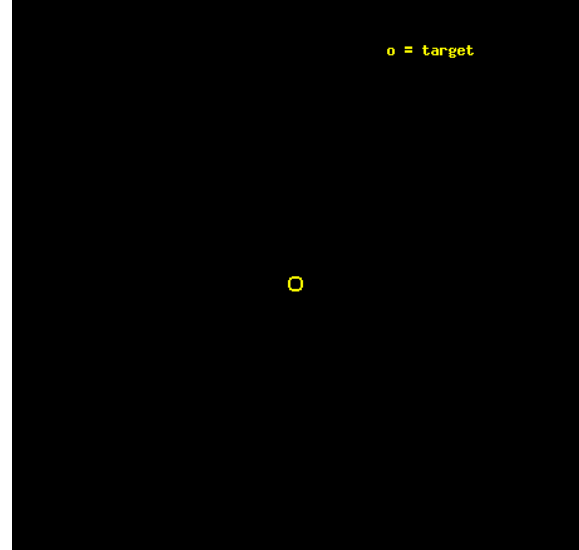
2.1 OBI

2.1.1 Images

Level 1 Image



Level 1 Bad Events



2.1.2 Parameters

obi_num	0	Obi number	sched_exp_time	1006.000000	[s] Scheduled observation exposure time
ascdsver	8.4.5	Processing system revision	ontime	0.0	[s]
caldbver	4.5.2	 	l1events	77949	Number of level 1 events
date	2012-10-22T08:42:03	Date and time of file creation			
revision	4	Processing version of data			

2.1.3 Events

Level 1 Events

	segment 0
level 1 events	77949
rejected events	0
rejected %	0%

2.2 Compared Parameters

Parameter	Planned	Actual	Parameter	Planned	Actual
Instrument	HRC	HRC	Obspar format version number	7	7
Detector	HRC-I	HRC-I	Obspar file type	PREDICTED	ACTUAL
Grating	NONE	NONE	Obspar update status	OVERRIDE	OVERRIDE
Data mode	OBSERVING	OBSERVING			
Observation mode	POINTING	POINTING			
[deg] Pointing RA	81.60079707530879	81.600795601173			
[deg] Pointing Dec	-32.84957828250297	-32.84958084924548			
[deg] Pointing Roll	300.9970752412851	300.9970746172974			
[mm] SIM focus pos	-1.038866356238299	-1.038866356238299			
[mm] SIM defocus	0.00142623211714632	0.00142623211714632			
[mm] SIM translation stage pos	126.9829799899862	126.9829799899862			
[mm] SIM translation stage offset	0.002514315301596071	0.002514315301596071			
[s] Observation start time (MET)	160968259.4010971	160968259.4010971			
Observation start date	2003-02-07T01:23:43	2003-02-07T01:24:19			
[s] Observation end time (MET)	160969368.4511437	160969368.4511437			
Observation end date	2003-02-07T01:40:29	2003-02-07T01:42:48			

2.3 Star Slots

2.4 FID Slots

A Summary

A.1 Status

V&V Scientist	Jen Lauer
V&V Date (YYYY-MM-DD)	2012.11.05
V&V Edition	1
V&V Disposition and Status	OK
V&V Charge Time	1.116

A.2 Comments

Charge time is based on Level 1 events because the OBC aspect solution was used. Consequently, there are no Level 2 events and no GTI.