

# V&V Reference Report

## L2 ASCDS Version : 8.4.5

Observation 4470 - L2 Version 3  
Chandra X-Ray Center

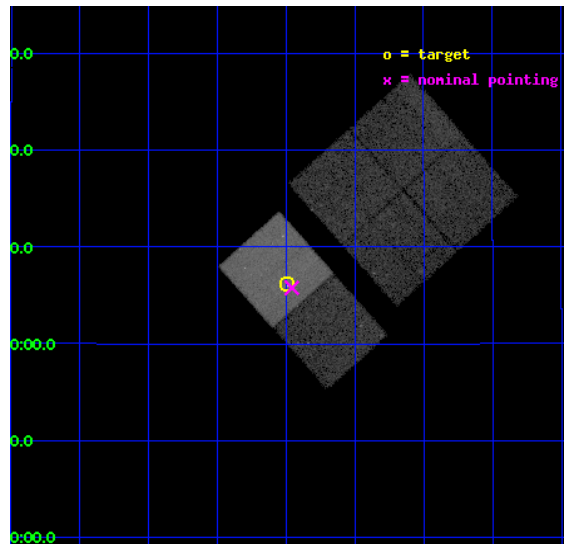
L2 Processing Date : Dec 3 2012

## Contents

<b>1</b>	<b>Front</b>	<b>2</b>
<b>2</b>	<b>OBI</b>	<b>3</b>
2.1	OBI . . . . .	3
2.1.1	Images . . . . .	3
2.1.2	Bias . . . . .	3
2.1.3	Parameters . . . . .	4
2.1.4	Events . . . . .	4
2.2	Compared Parameters . . . . .	5
2.3	Aspect . . . . .	6
2.4	Star Slots . . . . .	9
2.4.1	Slot 3 . . . . .	9
2.4.2	Slot 4 . . . . .	10
2.4.3	Slot 5 . . . . .	11
2.4.4	Slot 6 . . . . .	12
2.4.5	Slot 7 . . . . .	13
2.5	FID Slots . . . . .	14
2.5.1	Slot 0 . . . . .	14
2.5.2	Slot 1 . . . . .	15
2.5.3	Slot 2 . . . . .	16
<b>A</b>	<b>Summary</b>	<b>17</b>
A.1	Status . . . . .	17
A.2	Comments . . . . .	17

# 1 Front

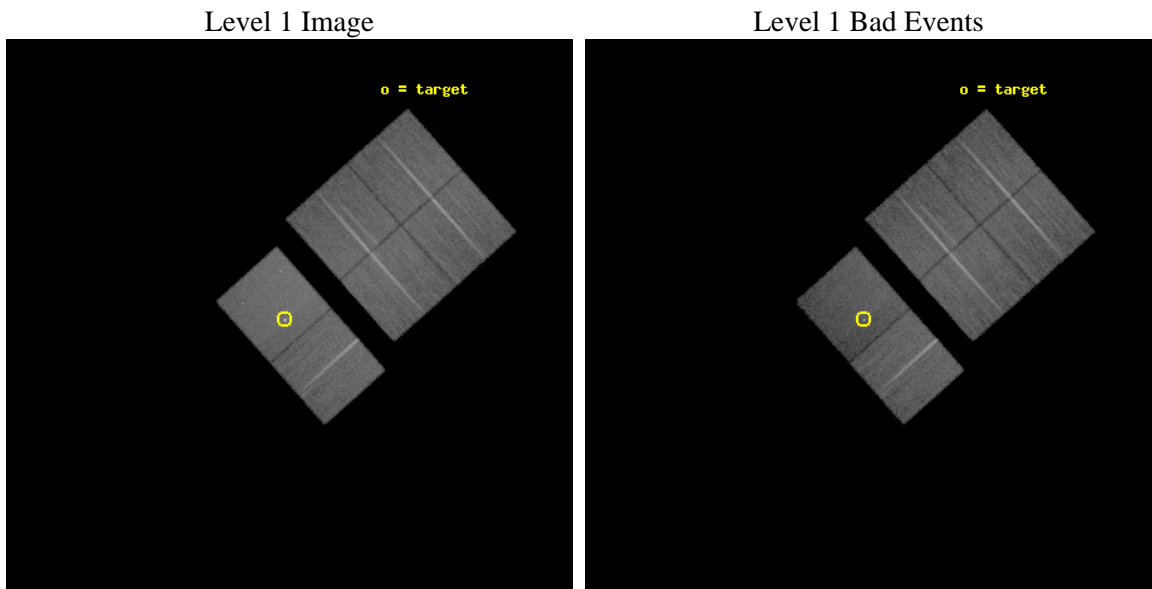
seq_num	200239	Sequence number
obs_id	4470	Observation id
title	AGE AND TEMPERATURE DEPENDENCE OF X-RAY ACTIVITY AT THE COOL END OF THE MAIN-SEQUENCE	Proposal title
observer	Dr Beate Stelzer	Principal investigator
object	G1 569 BC	Source name
dtcycle	0	&#160
cycle	P	events from which exps? Prim/Second/Both
ra_targ	223.62225	Observer's specified target RA [deg]
dec_targ	16.102361	Observer's specified target Dec [deg]
ra_nom	223.61431998261	Nominal RA [deg]
dec_nom	16.096370100293	Nominal Dec [deg]
roll_nom	228.23944941397	Nominal Roll [deg]
revision	3	Processing version of data
ontime	25174.399906218	Sum of GTIs [s]
livetime	24855.626496402	Livetime [s]
ontime0	25171.158915937	Sum of GTIs [s]
ontime1	25167.917925745	Sum of GTIs [s]
ontime2	25167.917925775	Sum of GTIs [s]
ontime3	25174.399906218	Sum of GTIs [s]
ontime6	25174.399906218	Sum of GTIs [s]
ontime7	25174.399906218	Sum of GTIs [s]
l2events	149155	Number of level 2 events



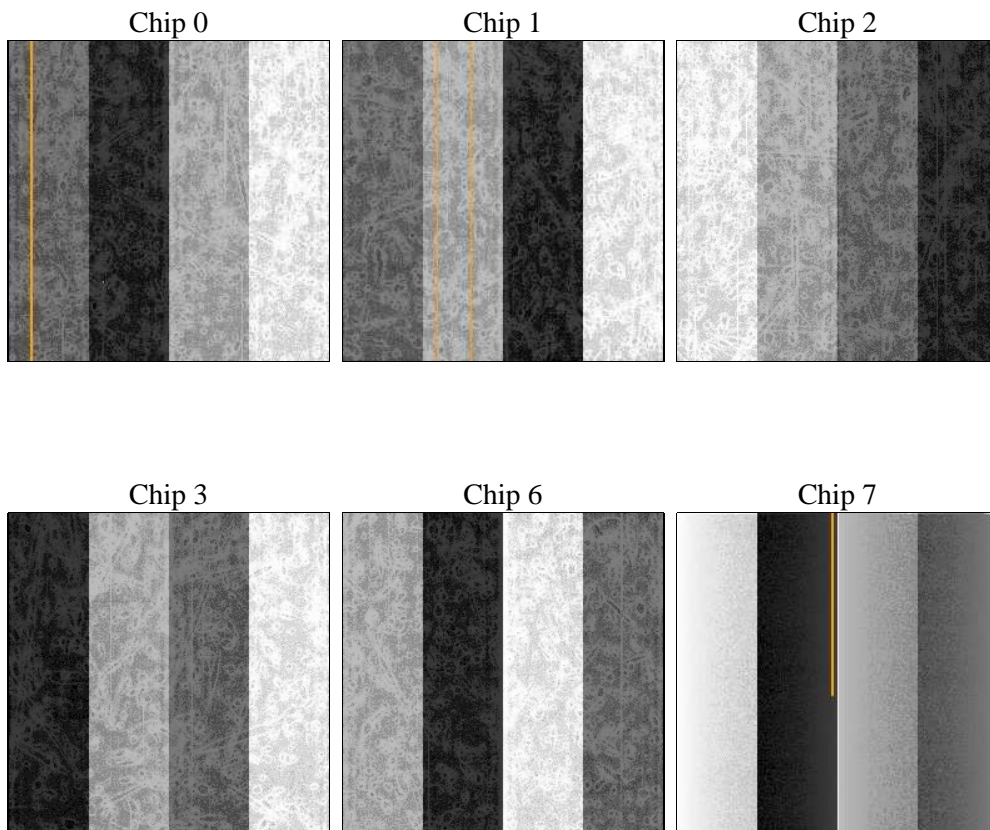
## 2 OBI

### 2.1 OBI

#### 2.1.1 Images



#### 2.1.2 Bias



### 2.1.3 Parameters

obi_num	0	Obi number	sched_exp_time	25000.000000	[s] Scheduled observation exposure time
ascdsver	8.4.5	Processing system revision	ontime	25174.399906218	Sum of GTIs [s]
caldbver	4.5.2	&#160	ontime0	25171.158915937	Sum of GTIs [s]
date	2012-12-03T05:12:35	Date and time of file creation	ontime1	25167.917925745	Sum of GTIs [s]
revision	3	Processing version of data	ontime2	25167.917925775	Sum of GTIs [s]
			ontime3	25174.399906218	Sum of GTIs [s]
			ontime6	25174.399906218	Sum of GTIs [s]
			ontime7	25174.399906218	Sum of GTIs [s]
			l1events	954024	Number of level 1 events

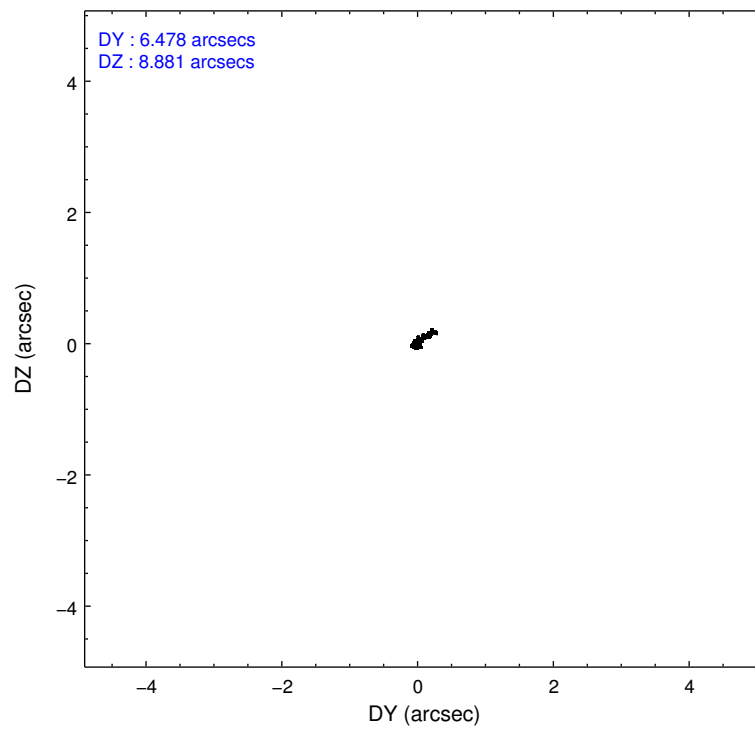
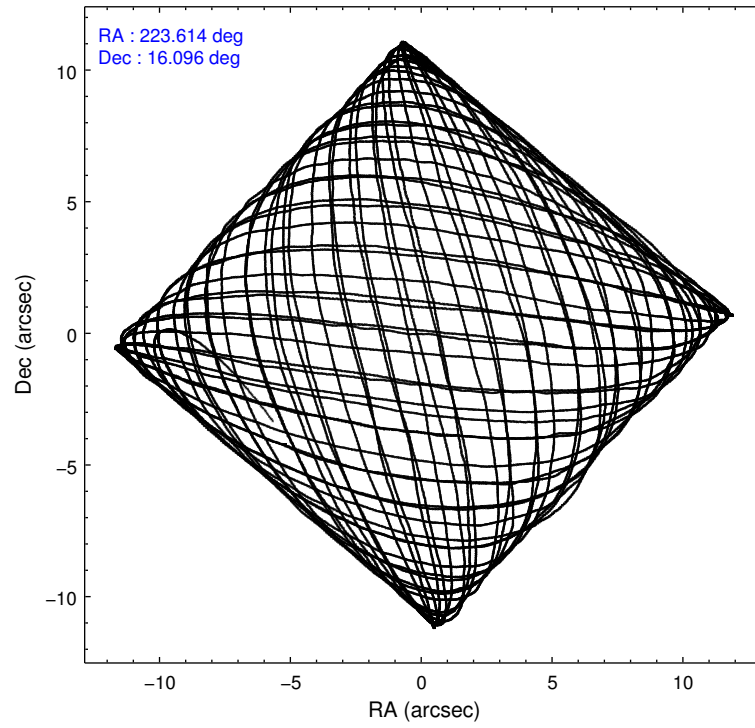
### 2.1.4 Events

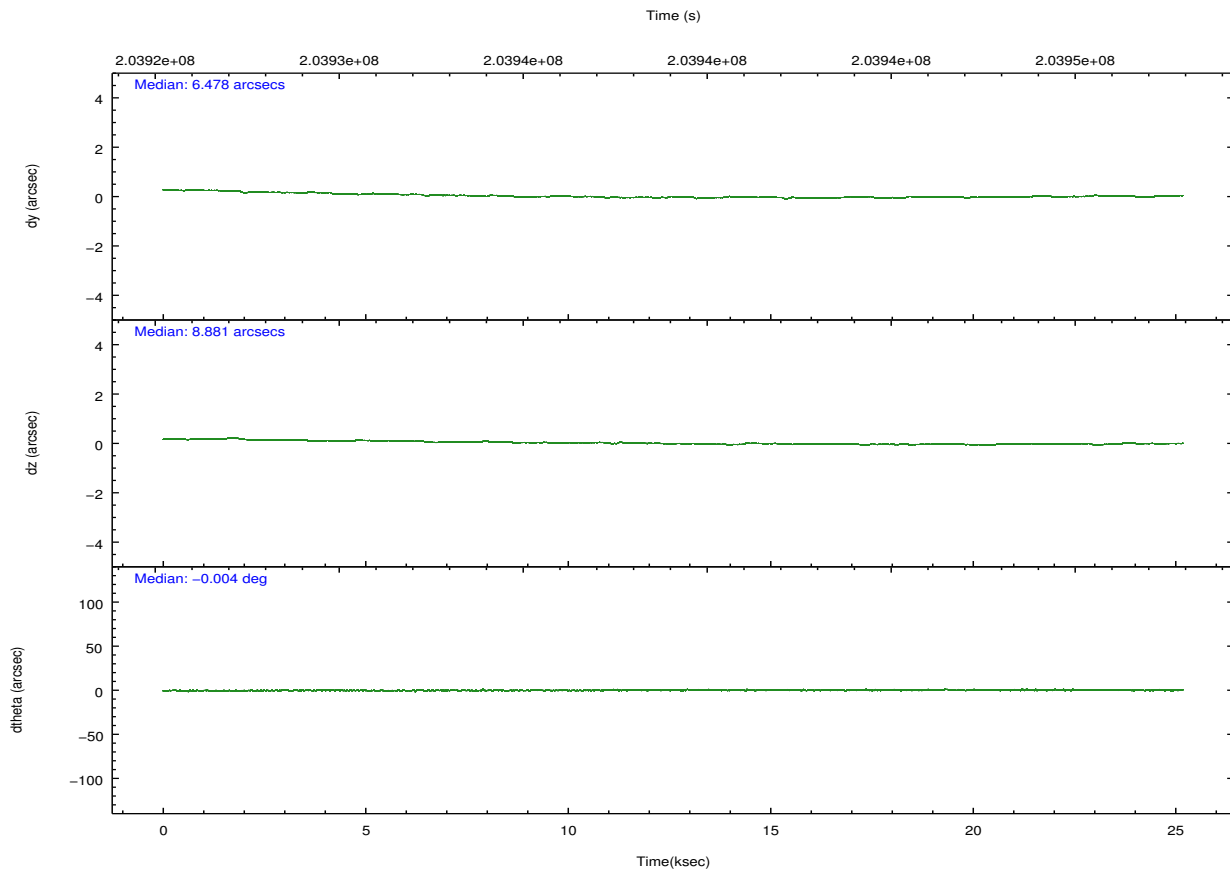
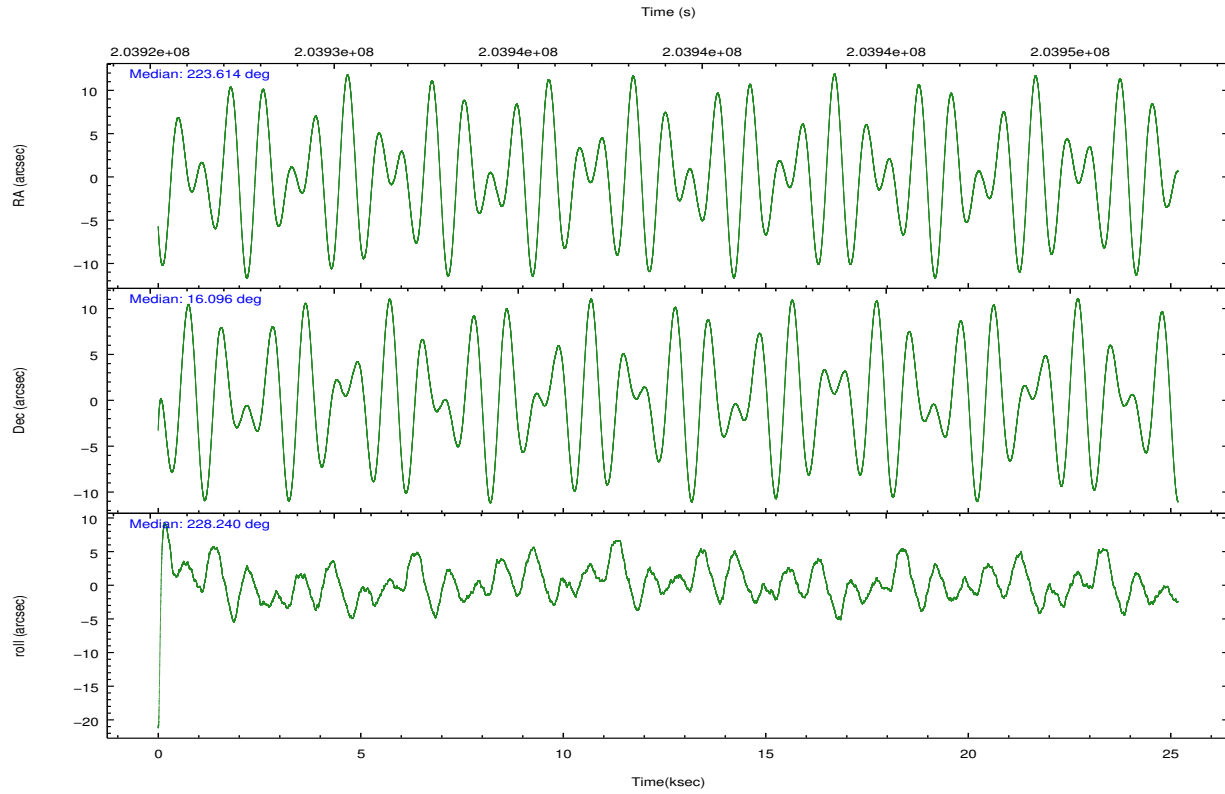
	ccd 0	ccd 1	ccd 2	ccd 3	ccd 6	ccd 7		ccd 0	ccd 1	ccd 2	ccd 3	ccd 6	ccd 7
level 1 events	151139	143847	164871	149741	159435	184991	grade 0 events	5206	6277	5473	5813	5964	9795
rejected events	135723	126796	149810	134868	143047	98625		3%	4%	3%	3%	3%	5%
rejected %	89%	88%	90%	90%	89%	53%	grade 1 events	60	60	71	86	66	423
								0%	0%	0%	0%	0%	0%
							grade 2 events	3687	3583	3614	2965	3461	17495
								2%	2%	2%	1%	2%	9%
							grade 3 events	1781	1973	1589	1623	1813	8267
								1%	1%	0%	1%	1%	4%
							grade 4 events	1609	1884	1662	1636	1723	8056
								1%	1%	1%	1%	1%	4%
							grade 5 events	5818	5707	4996	6038	6223	19356
								3%	3%	3%	4%	3%	10%
							grade 6 events	3139	3343	2730	2839	3432	42798
								2%	2%	1%	1%	2%	23%
							grade 7 events	129839	121020	144736	128741	136753	78801
								85%	84%	87%	85%	85%	42%

## 2.2 Compared Parameters

Parameter	Planned	Actual	Parameter	Planned	Actual
Instrument	ACIS	ACIS	Obspar format version number	7	7
Detector	ACIS-012367	ACIS-012367	Obspar file type	PREDICTED	ACTUAL
Grating	NONE	NONE	Obspar update status	NONE	UPDATED
Data mode	VFAINT	VFAINT	Number of optional ACIS chips dropped	0	0
Observation mode	POINTING	POINTING	On-chip summing requested	N	N
[deg] Pointing RA	223.619733	223.6143199826083	Subarray requested	NONE	NONE
[deg] Pointing Dec	16.123125	16.09637010029311	Alternating exposures requested	N	N
[deg] Pointing Roll	228.081335	228.2394494139694	[s] Primary exposure time	0.000000	3.2
[mm] SIM focus pos	-0.684267	-0.6828225247311905			
[mm] SIM defocus	0	0.001444936568705701			
[mm] SIM translation stage pos	-190.132523	-190.1425803651734			
[mm] SIM translation stage offset	0	0.01005778216563158			
[s] Observation start time (MET)	203926657.184000	203925584.34015			
Observation start date	2004-06-18T06:16:33	2004-06-18T05:59:44			
[s] Observation end time (MET)	203951657.184000	203952038.05382			
Observation end date	2004-06-18T13:13:13	2004-06-18T13:20:38			
Read mode	TIMED	TIMED			

## 2.3 Aspect



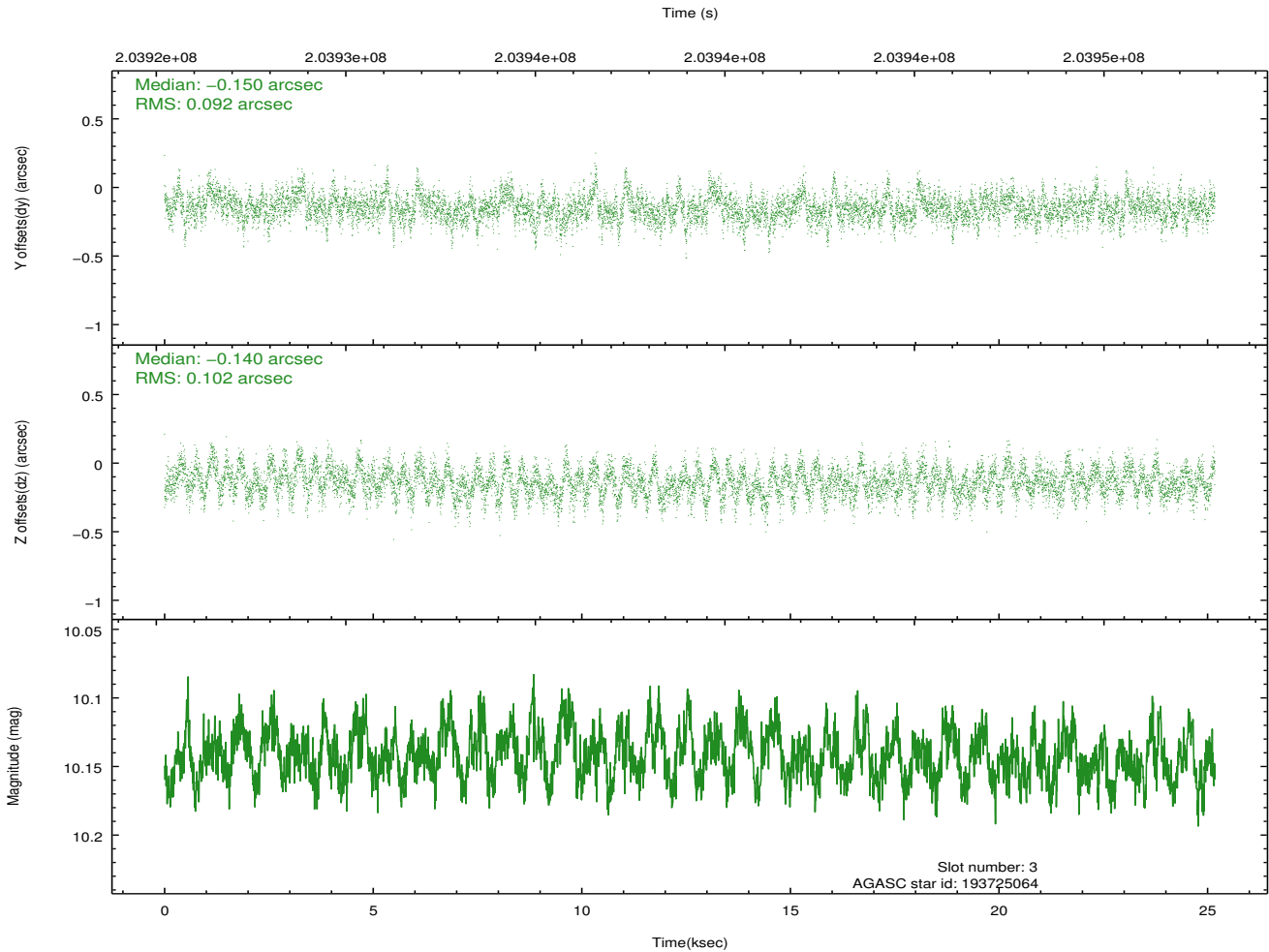
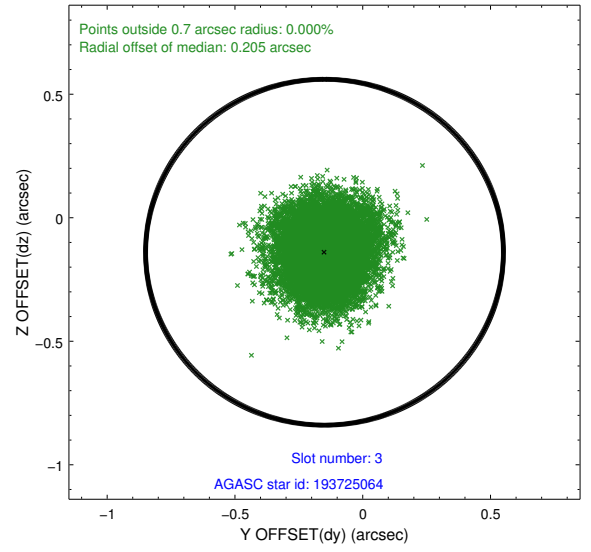
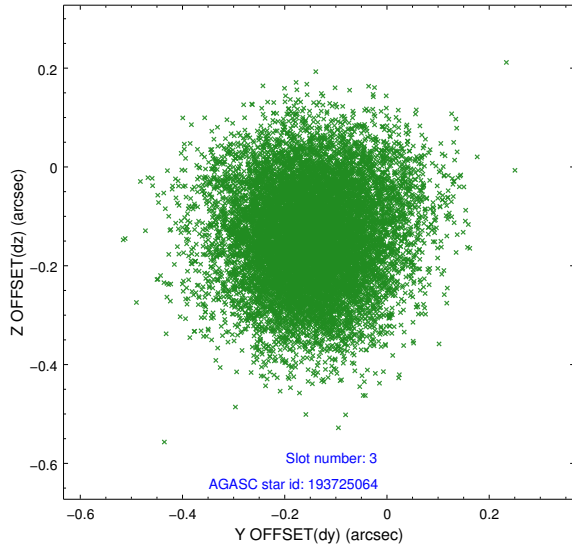


### Slot Statistics

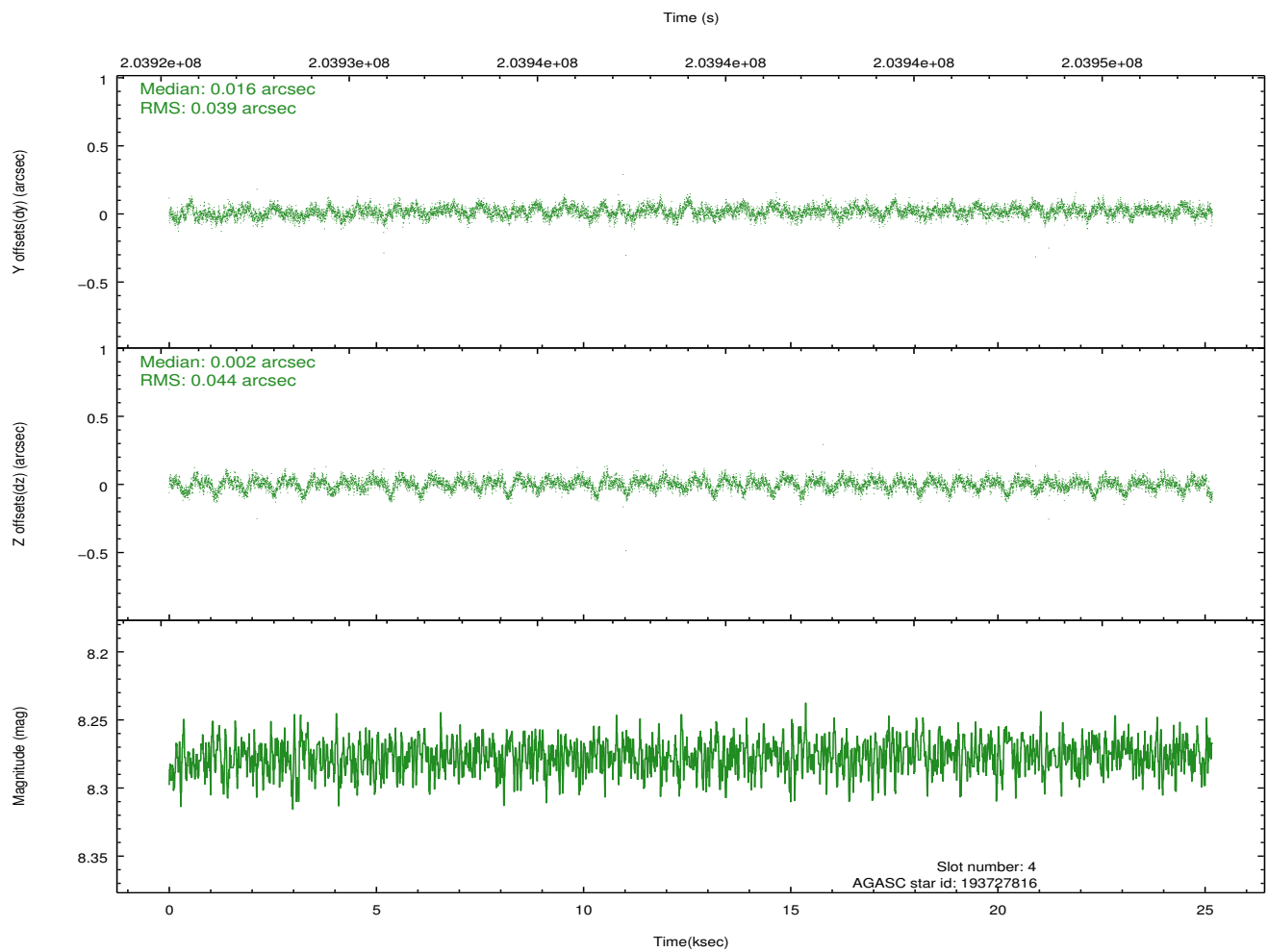
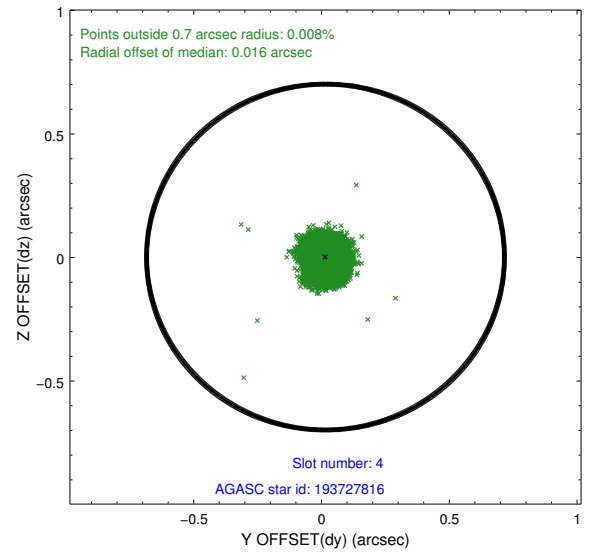
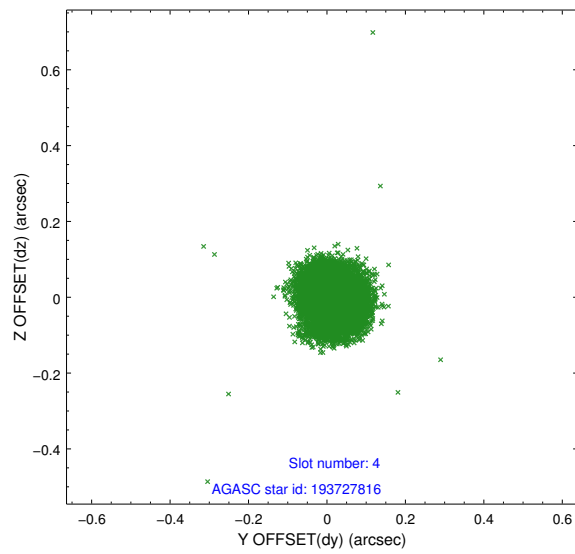
slot	status	id	mag	n_pts	med_dy	med_dz	dr1	dr2	ra	dec	mean_y	mean_z
0	FID	ACIS-S-2	7.10	6142	-0.044	-0.050	0.009	0.023	0.000000	0.000000	-759.30	-1730.12
1	FID	ACIS-S-4	7.21	6142	0.088	0.035	0.008	0.030	0.000000	0.000000	2154.06	178.32
2	FID	ACIS-S-5	7.23	6142	-0.075	0.024	0.009	0.022	0.000000	0.000000	-1812.01	172.12
3	GUIDE	193725064	10.14	12265	-0.150	-0.140	0.146	0.238	223.634645	16.731472	-1664.24	-1424.86
4	GUIDE	193727816	8.28	12271	0.016	0.002	0.062	0.099	223.575128	15.529957	1692.29	1311.44
5	GUIDE	193730968	7.51	12284	0.097	0.030	0.067	0.106	223.708209	15.325320	1932.10	2147.55
6	GUIDE	194644072	9.77	12272	-0.124	-0.061	0.132	0.209	224.201328	16.328954	-1895.89	998.49
7	GUIDE	193729184	9.74	12244	0.161	0.158	0.148	0.228	223.790929	15.316789	1762.76	2381.75

## 2.4 Star Slots

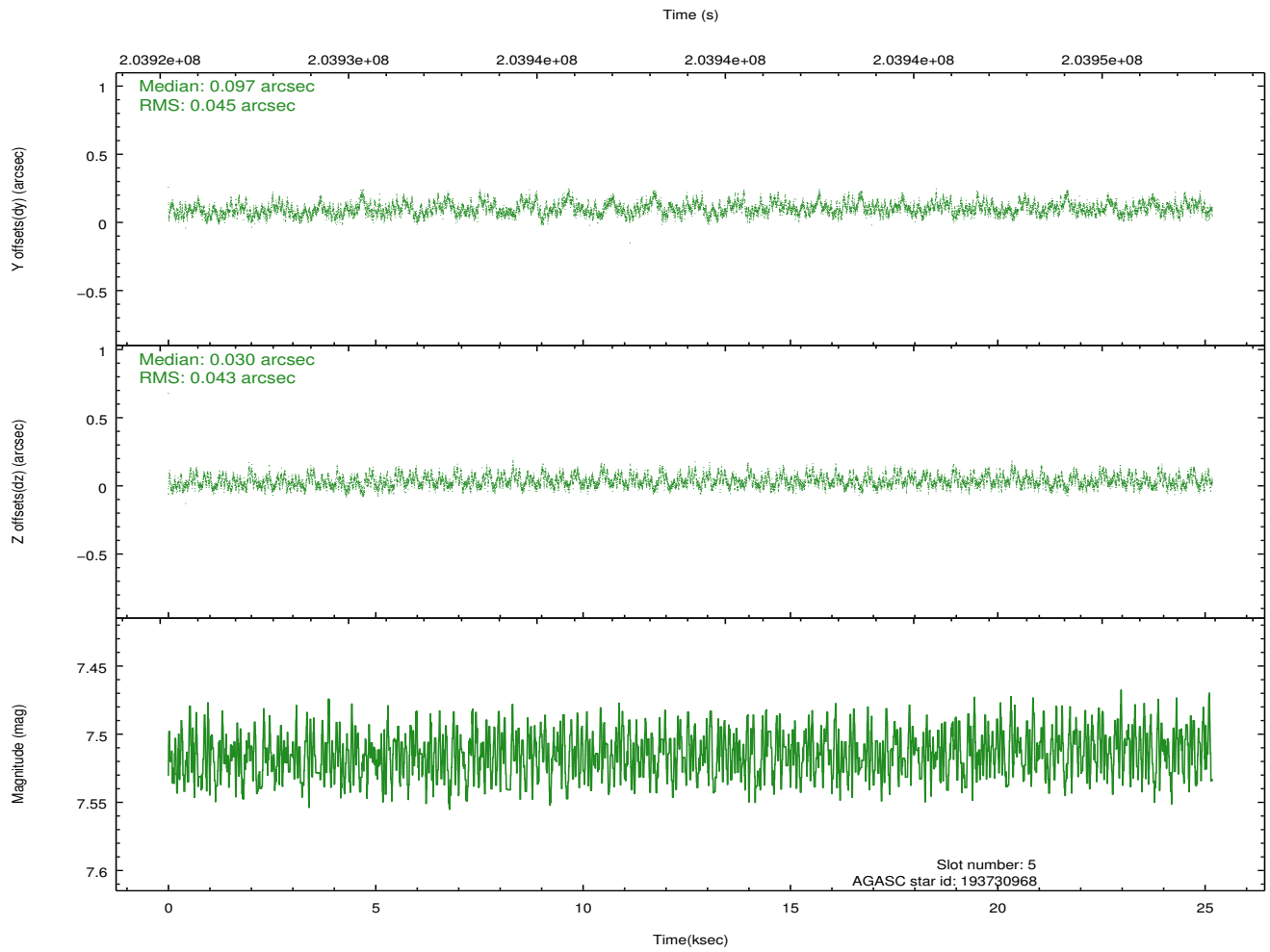
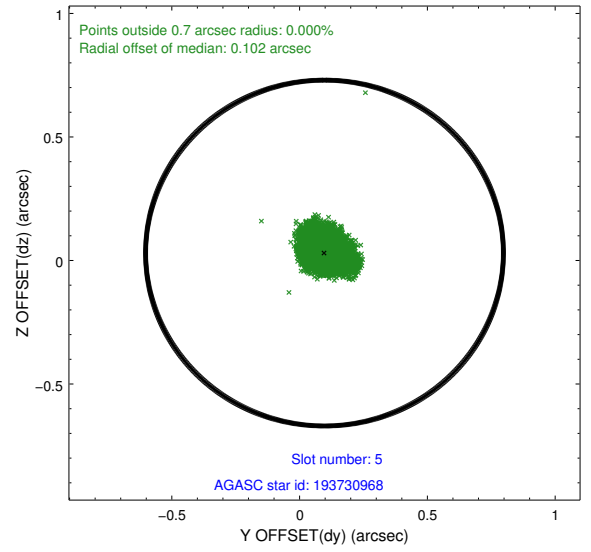
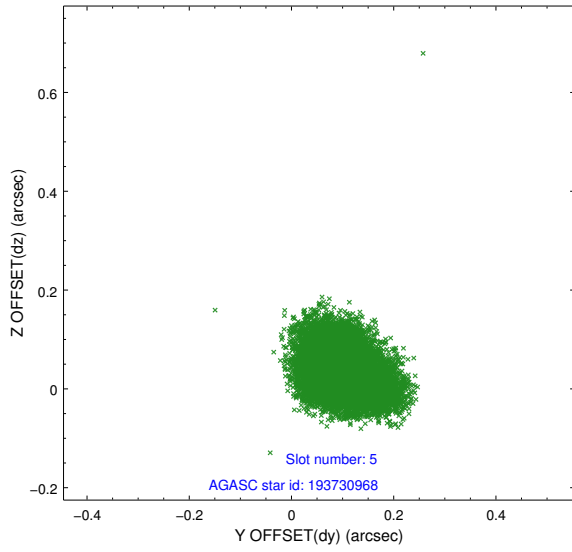
### 2.4.1 Slot 3



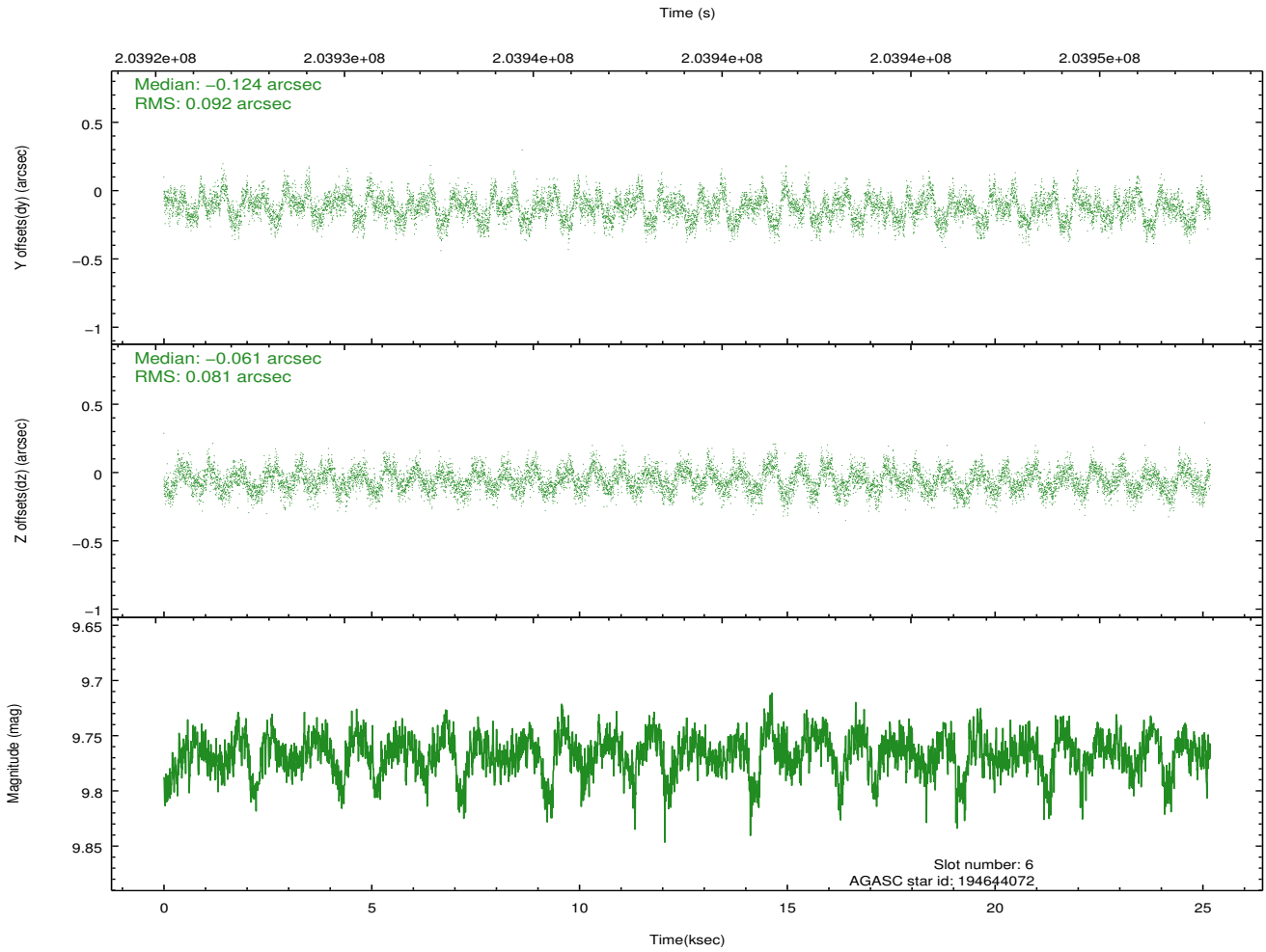
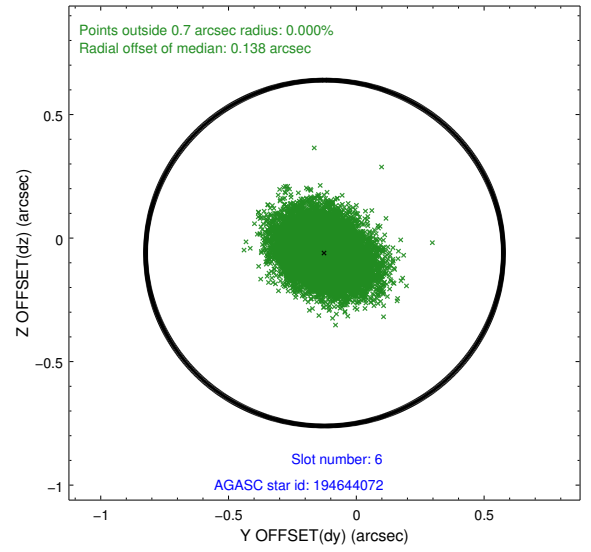
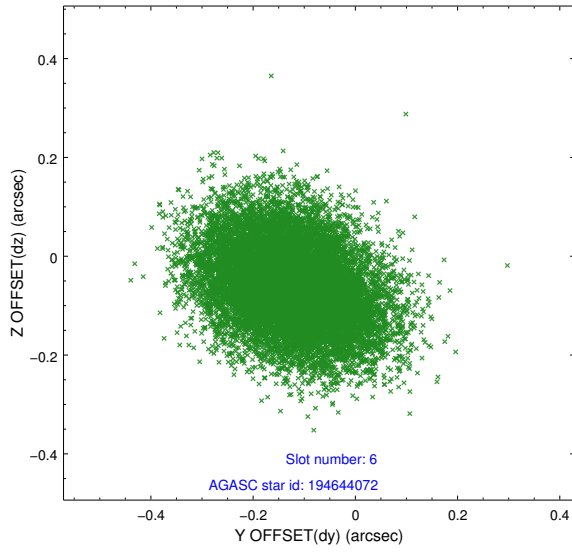
## 2.4.2 Slot 4



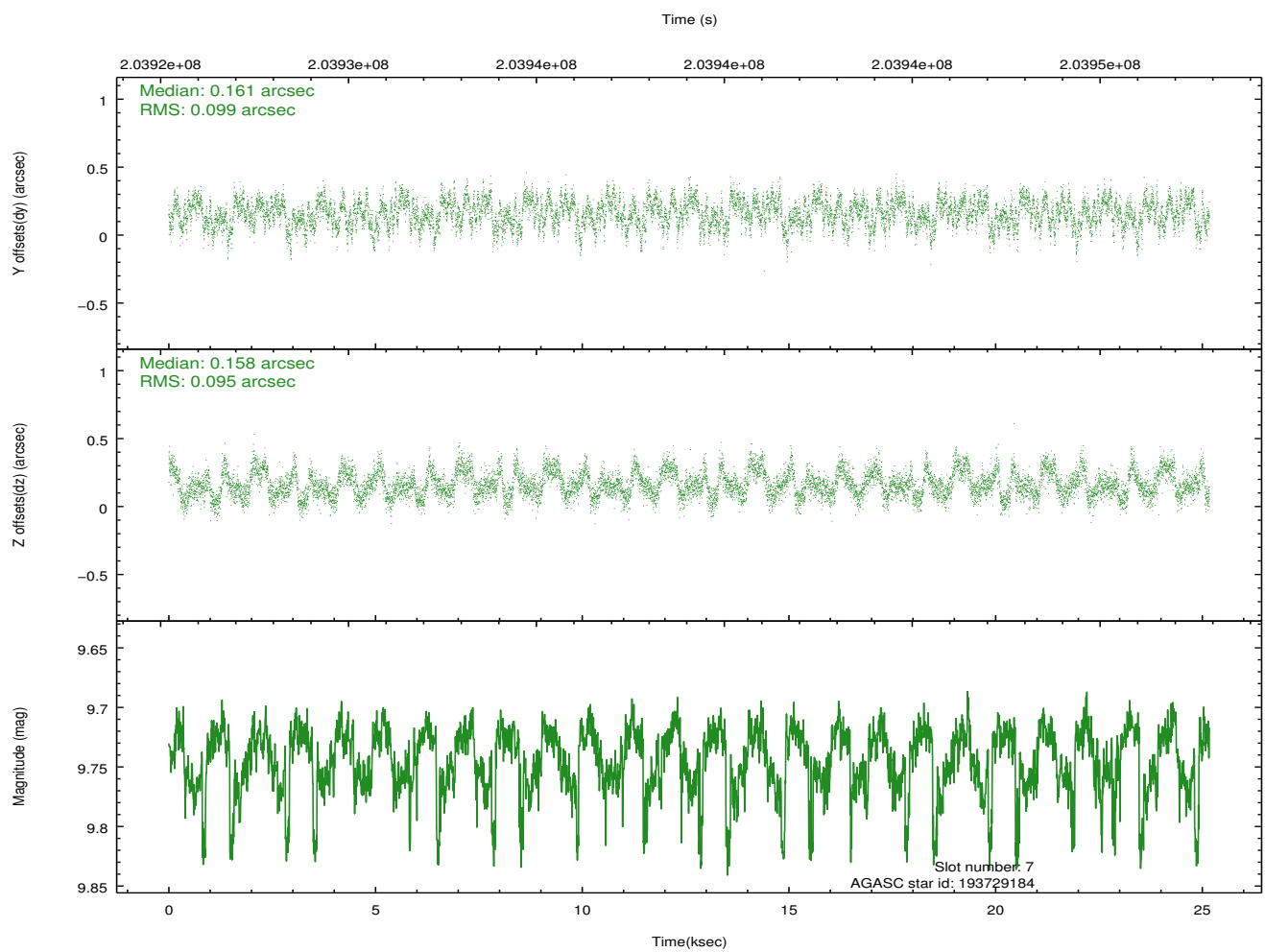
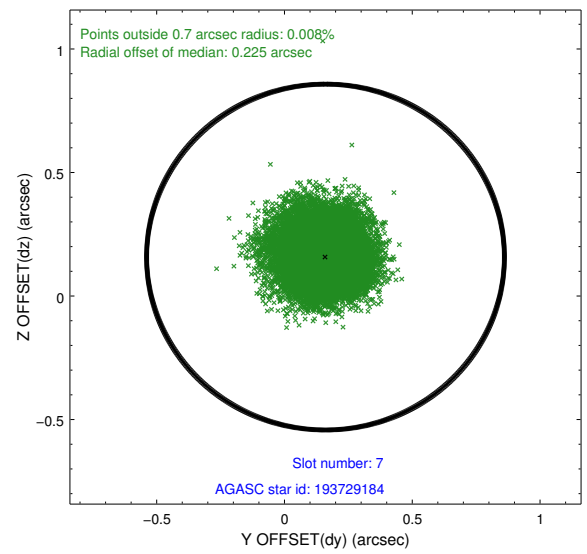
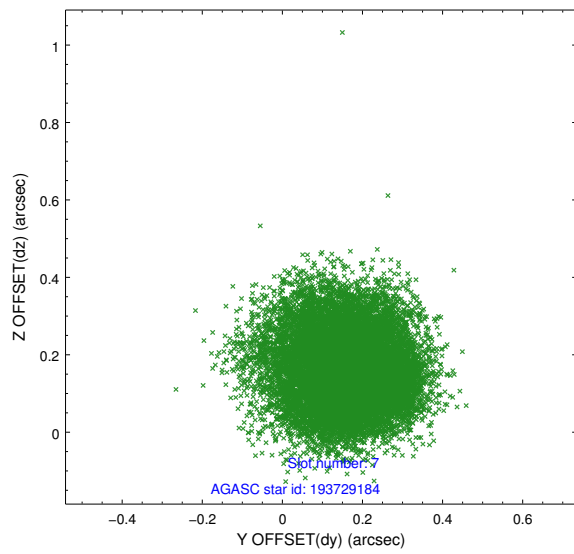
### 2.4.3 Slot 5



## 2.4.4 Slot 6

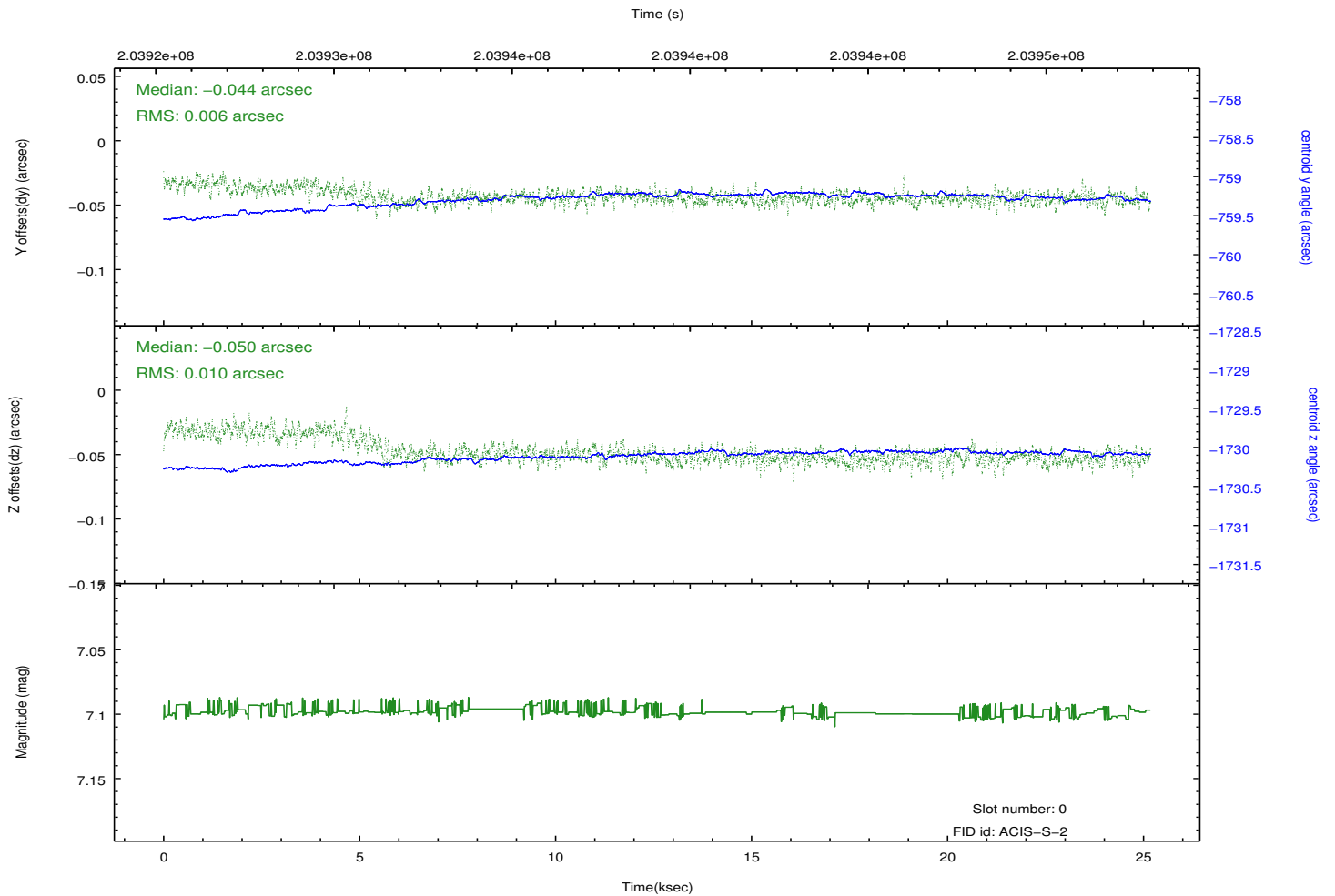
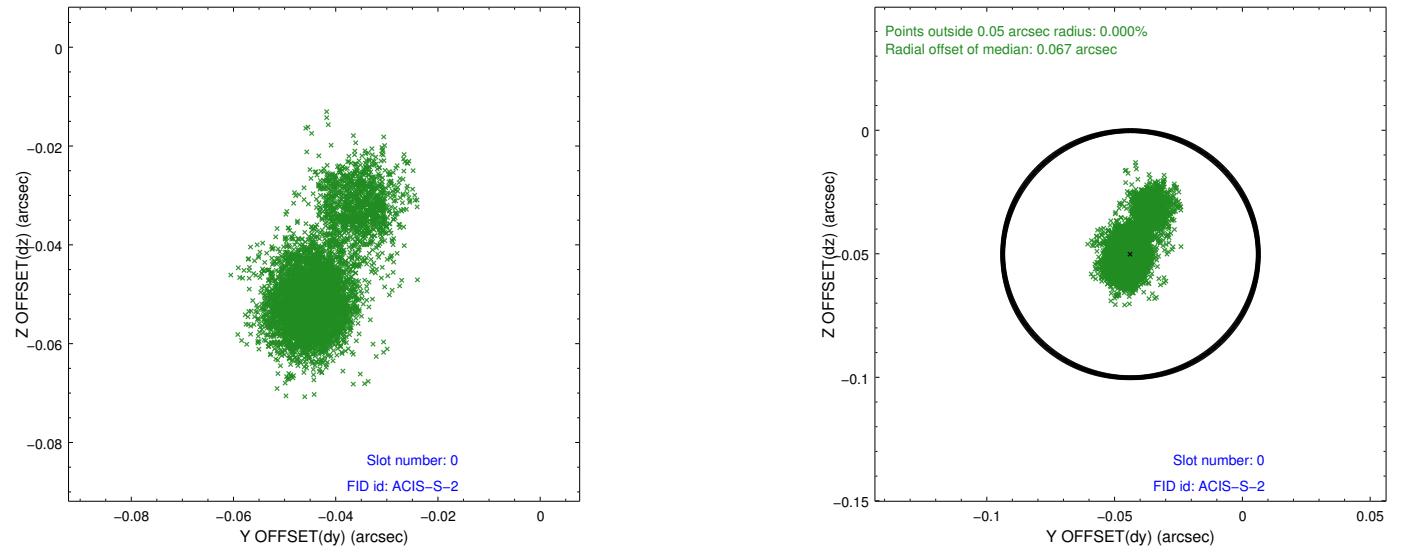


## 2.4.5 Slot 7

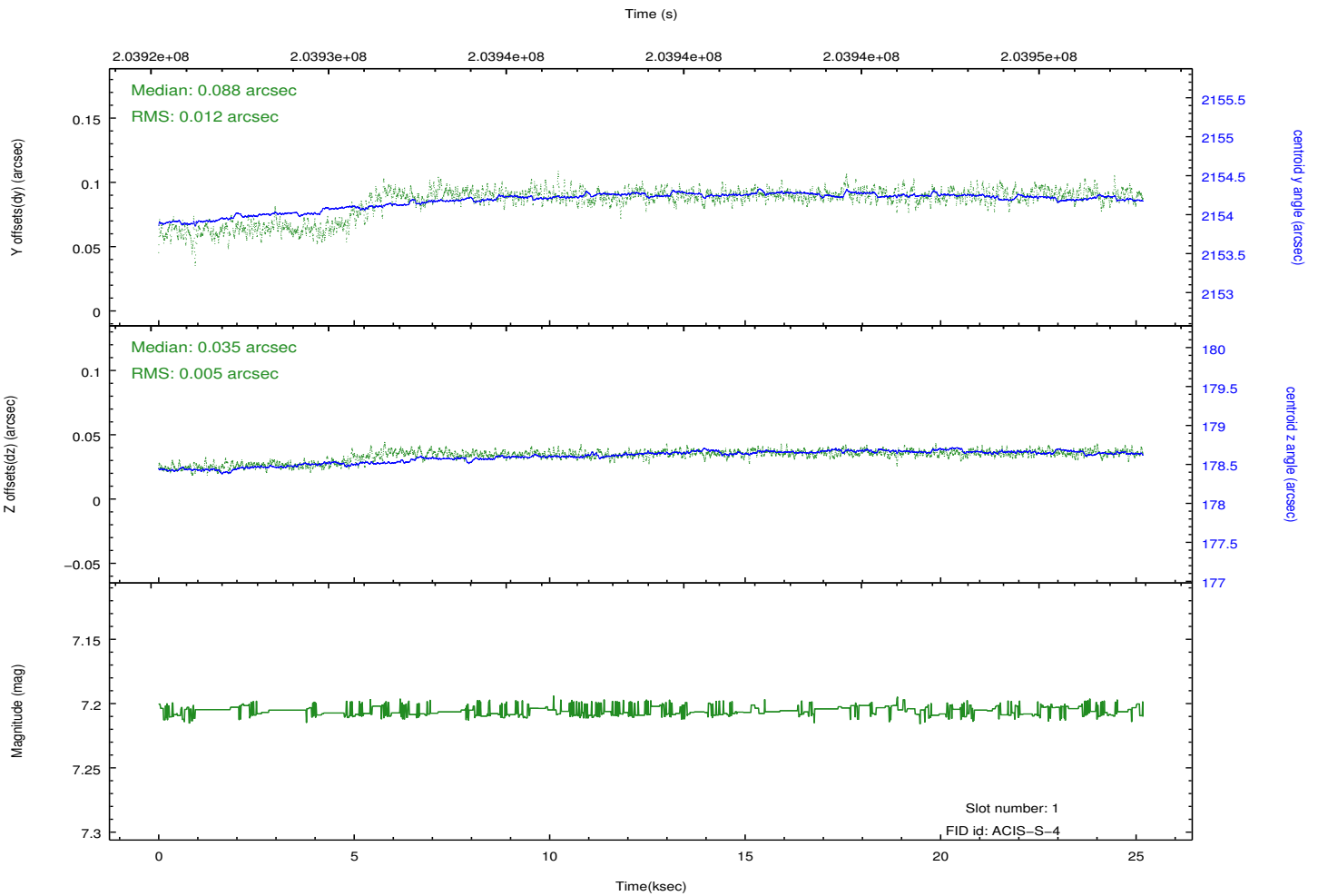
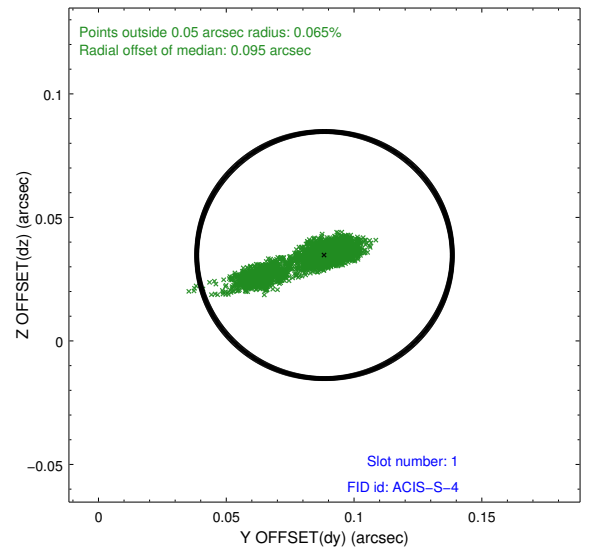
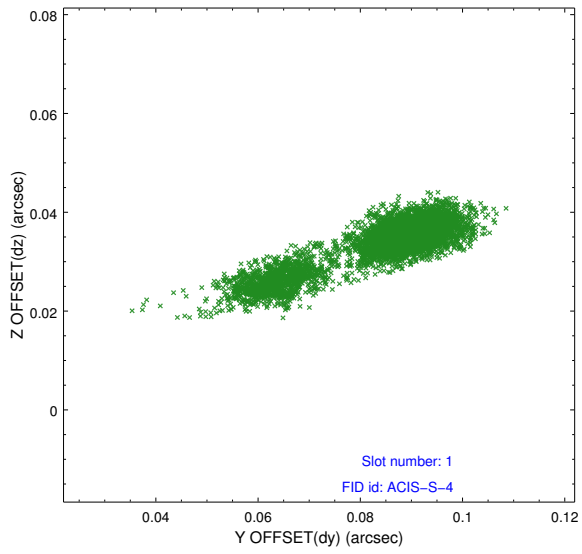


## 2.5 FID Slots

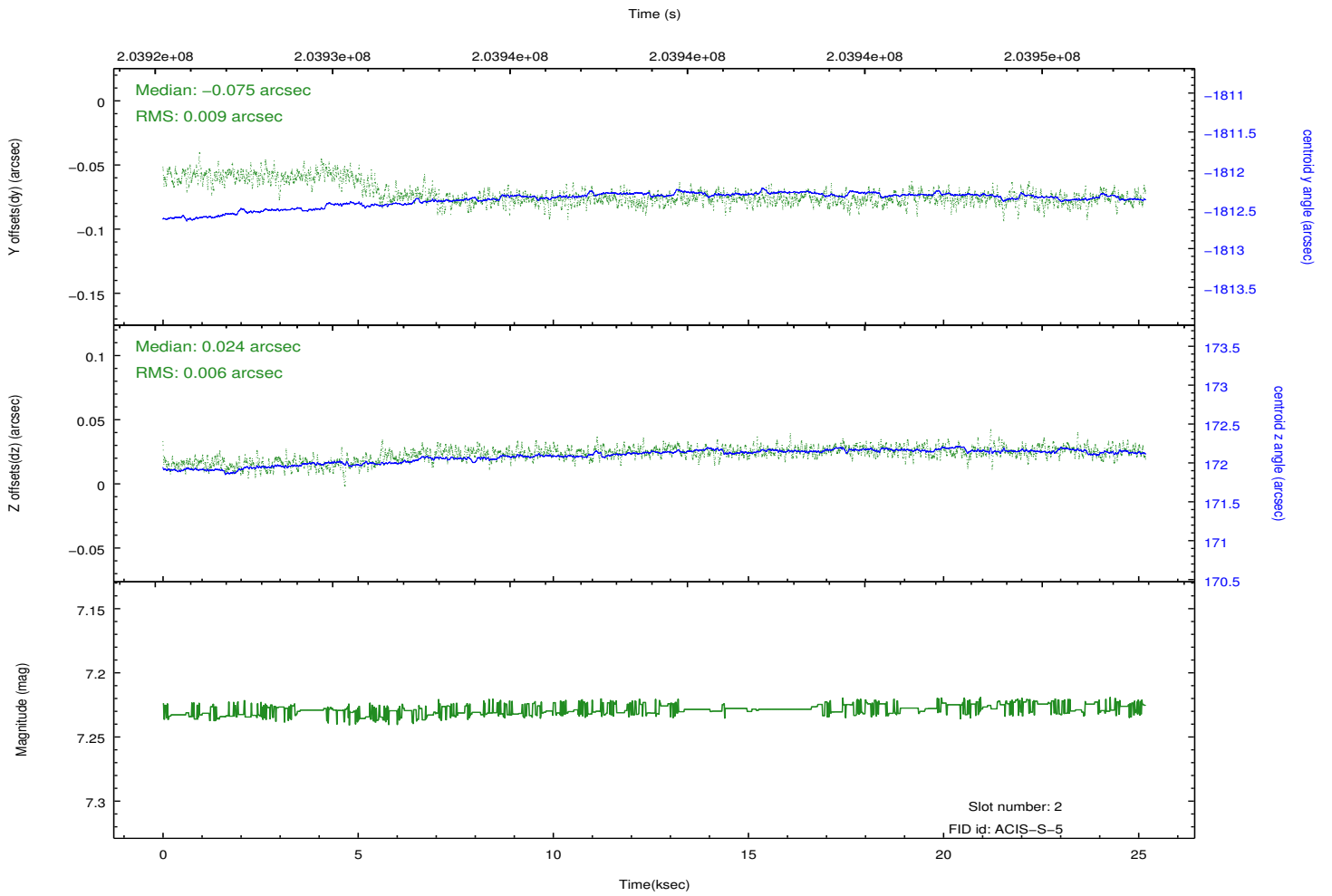
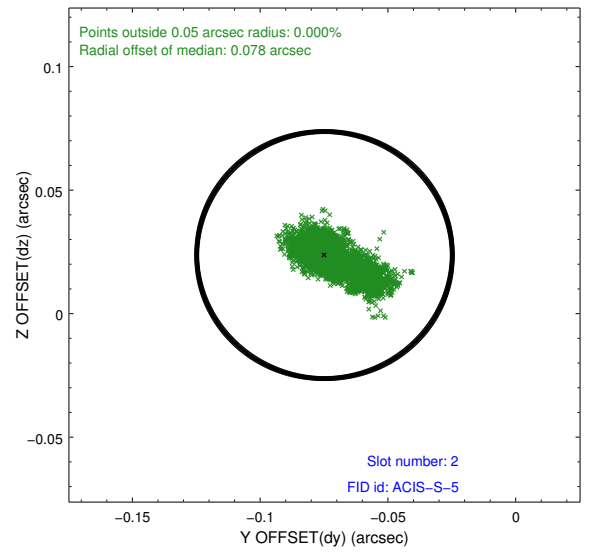
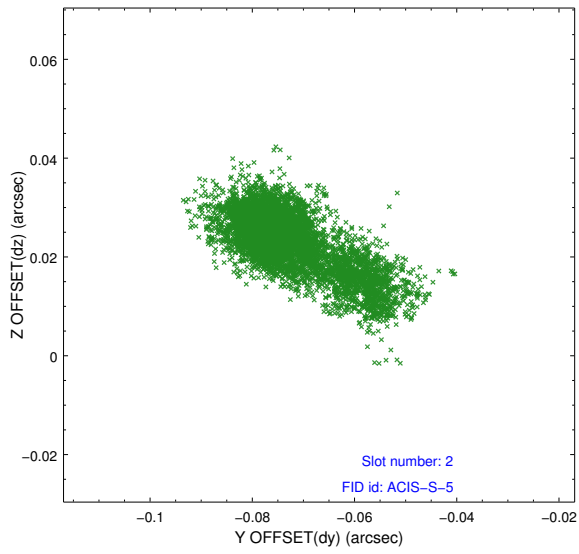
### 2.5.1 Slot 0



## 2.5.2 Slot 1



### 2.5.3 Slot 2



# A Summary

## A.1 Status

V&V Scientist	Beth Sundheim
V&V Date (YYYY-MM-DD)	2012.12.18
V&V Edition	1
V&V Disposition and Status	OK
V&V Charge Time	25.174

## A.2 Comments