

V&V Reference Report

L2 ASCDS Version : 8.4.5

Observation 4550 - L2 Version 3
Chandra X-Ray Center

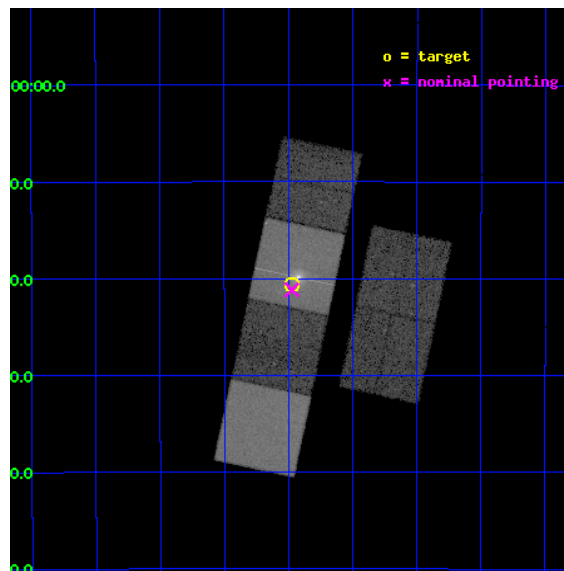
L2 Processing Date : Dec 3 2012

Contents

1	Front	2
2	OBI	3
2.1	OBI	3
2.1.1	Images	3
2.1.2	Bias	3
2.1.3	Parameters	4
2.1.4	Events	4
2.2	Compared Parameters	5
2.3	Aspect	6
2.4	Star Slots	9
2.4.1	Slot 3	9
2.4.2	Slot 4	10
2.4.3	Slot 5	11
2.4.4	Slot 6	12
2.4.5	Slot 7	13
2.5	FID Slots	14
2.5.1	Slot 0	14
2.5.2	Slot 1	15
2.5.3	Slot 2	16
A	Summary	17
A.1	Status	17
A.2	Comments	17

1 Front

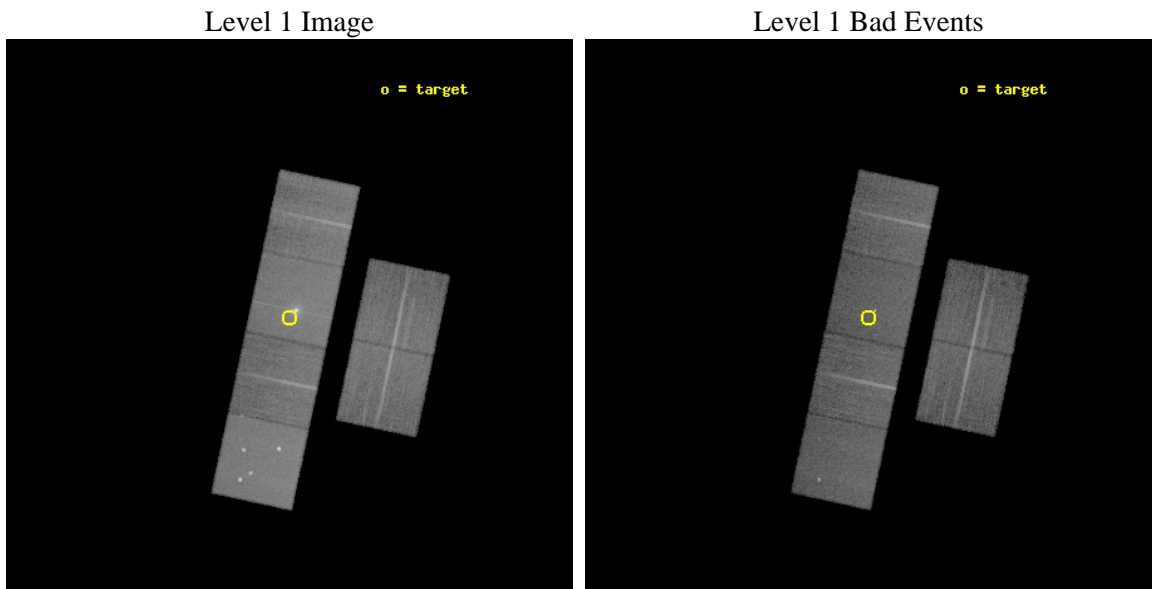
seq_num	400333	Sequence number
obs_id	4550	Observation id
title	Low-luminosity X-ray binaries	Proposal title
observer	Prof Mariano Mendez	Principal investigator
object	1RXS J175428.3-262035	Source name
dtcycle	0	
cycle	P	events from which exps? Prim/Second/Both
ra_targ	268.617917	Observer's specified target RA [deg]
dec_targ	-26.343056	Observer's specified target Dec [deg]
ra_nom	268.6182940258	Nominal RA [deg]
dec_nom	-26.352740048267	Nominal Dec [deg]
roll_nom	282.0512551134	Nominal Roll [deg]
revision	3	Processing version of data
ontime	19308.33580634	Sum of GTIs [s]
livetime	19063.842032276	Livetime [s]
ontime2	19308.376846343	Sum of GTIs [s]
ontime3	19308.21268633	Sum of GTIs [s]
ontime5	19308.294766337	Sum of GTIs [s]
ontime6	19308.253726333	Sum of GTIs [s]
ontime7	19308.33580634	Sum of GTIs [s]
ontime8	19308.171646357	Sum of GTIs [s]
l2events	262681	Number of level 2 events



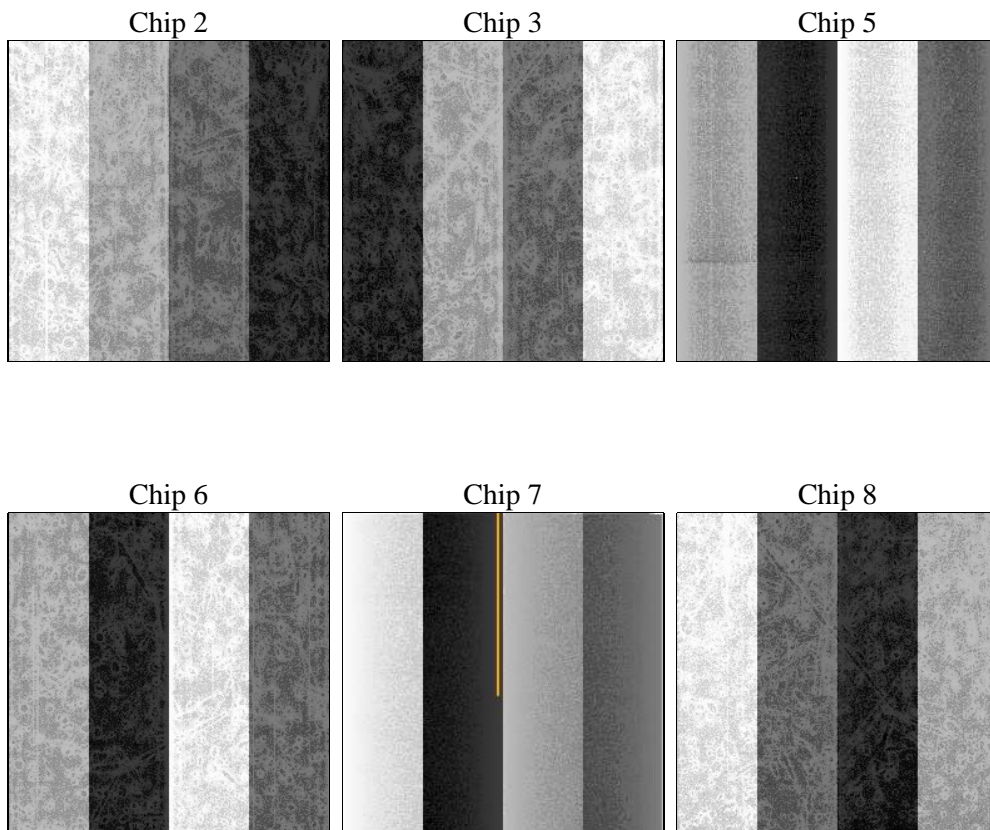
2 OBI

2.1 OBI

2.1.1 Images



2.1.2 Bias



2.1.3 Parameters

obi_num	1	Obi number	sched_exp_time	19352.000000	[s] Scheduled observation exposure time
ascdsver	8.4.5	Processing system revision	ontime	19308.33580634	Sum of GTIs [s]
caldsver	4.5.2	 	ontime2	19308.376846343	Sum of GTIs [s]
date	2012-12-03T19:25:52	Date and time of file creation	ontime3	19308.21268633	Sum of GTIs [s]
revision	3	Processing version of data	ontime5	19308.294766337	Sum of GTIs [s]
			ontime6	19308.253726333	Sum of GTIs [s]
			ontime7	19308.33580634	Sum of GTIs [s]
			ontime8	19308.171646357	Sum of GTIs [s]
			l1events	1079274	Number of level 1 events

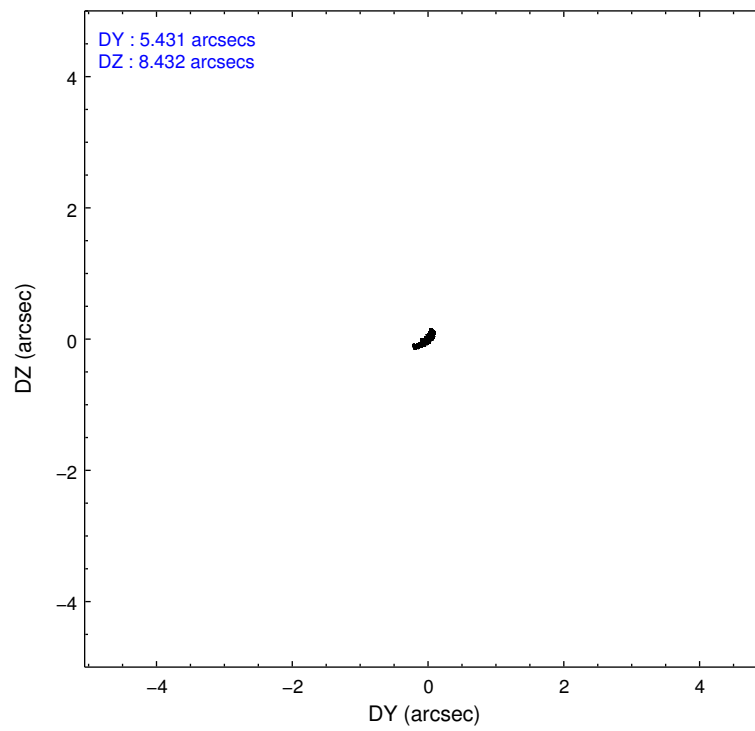
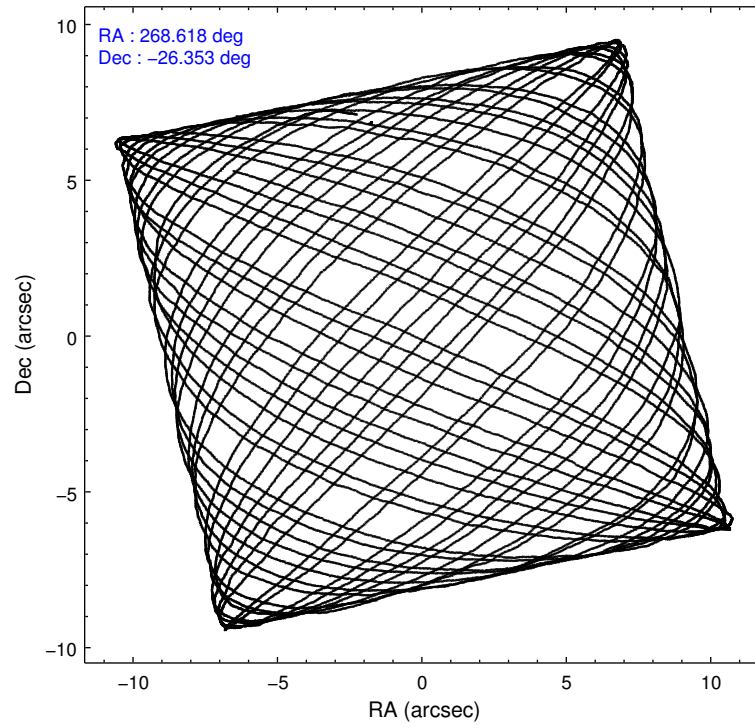
2.1.4 Events

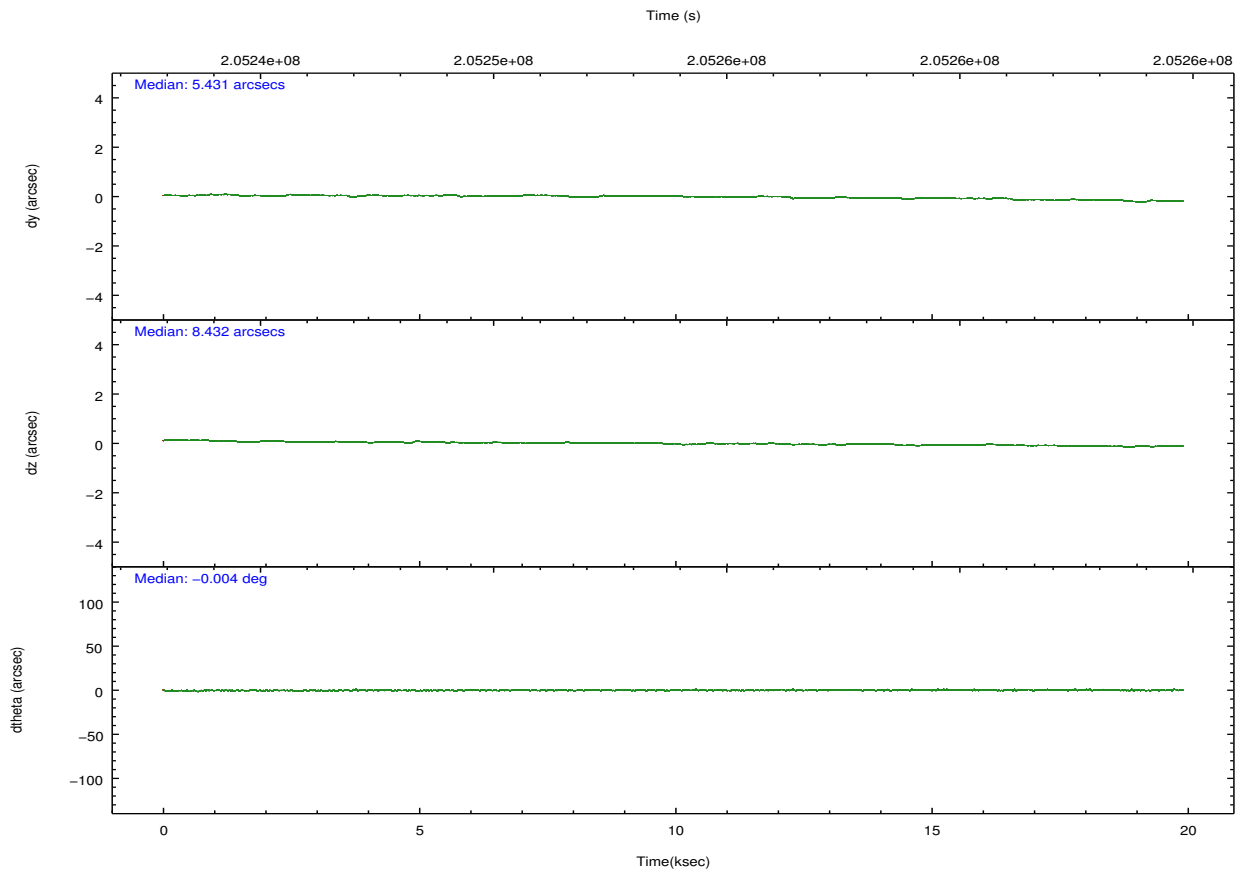
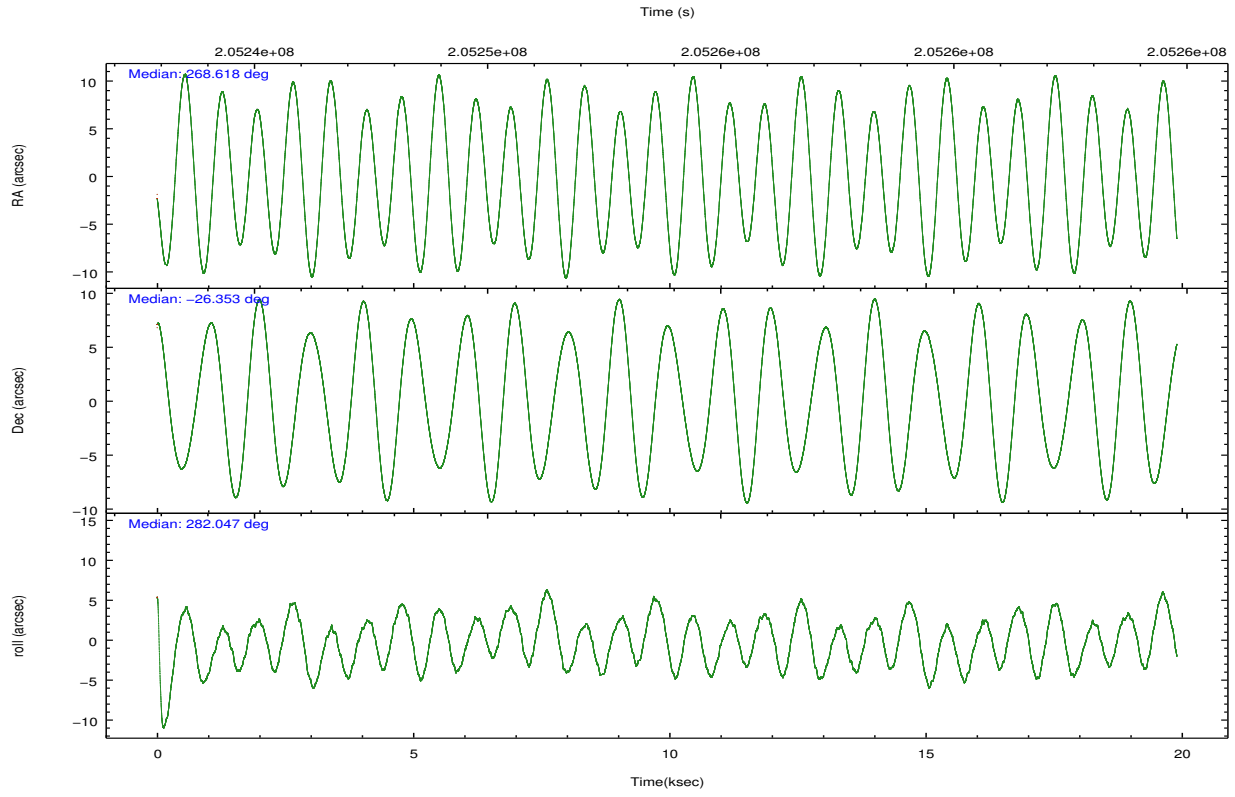
	ccd 2	ccd 3	ccd 5	ccd 6	ccd 7	ccd 8		ccd 2	ccd 3	ccd 5	ccd 6	ccd 7	ccd 8
level 1 events	150343	143484	225913	152596	223043	183895	grade 0 events	8164	8090	18545	8138	12803	13246
rejected events	132574	125775	117504	133663	116482	144529		5%	5%	8%	5%	5%	7%
rejected %	88%	87%	52%	87%	52%	78%	grade 1 events	96	80	1157	72	346	138
								0%	0%	0%	0%	0%	0%
							grade 2 events	3578	3238	30499	3790	22106	8295
								2%	2%	13%	2%	9%	4%
							grade 3 events	1597	1786	3885	1798	9928	4272
								1%	1%	1%	1%	4%	2%
							grade 4 events	1628	1667	3943	1707	9895	3949
								1%	1%	1%	1%	4%	2%
							grade 5 events	5893	6204	15762	6665	19482	8707
								3%	4%	6%	4%	8%	4%
							grade 6 events	2809	2938	51616	3509	51844	9615
								1%	2%	22%	2%	23%	5%
							grade 7 events	126578	119481	100506	126917	96639	135673
								84%	83%	44%	83%	43%	73%

2.2 Compared Parameters

Parameter	Planned	Actual	Parameter	Planned	Actual
Instrument	ACIS	ACIS	Obspar format version number	7	7
Detector	ACIS-235678	ACIS-235678	Obspar file type	PREDICTED	ACTUAL
Grating	NONE	NONE	Obspar update status	NONE	UPDATED
Data mode	FAINT	FAINT	Number of optional ACIS chips dropped	0	0
Observation mode	POINTING	POINTING	On-chip summing requested	N	N
[deg] Pointing RA	268.597630	268.618294025804	Subarray requested	NONE	NONE
[deg] Pointing Dec	-26.332745	-26.35274004826734	Alternating exposures requested	N	N
[deg] Pointing Roll	281.885447	282.0512551134006	[s] Primary exposure time	0.000000	3.2
[mm] SIM focus pos	-0.684267	-0.6828225247311905			
[mm] SIM defocus	0	0.001444936568705701			
[mm] SIM translation stage pos	-190.132523	-190.1400660498719			
[mm] SIM translation stage offset	0	0.00754346686406393			
[s] Observation start time (MET)	205244447.184000	205243306.97353			
Observation start date	2004-07-03T12:19:43	2004-07-03T12:01:46			
[s] Observation end time (MET)	205263799.184000	205264386.09946			
Observation end date	2004-07-03T17:42:15	2004-07-03T17:53:06			
Read mode	TIMED	TIMED			

2.3 Aspect



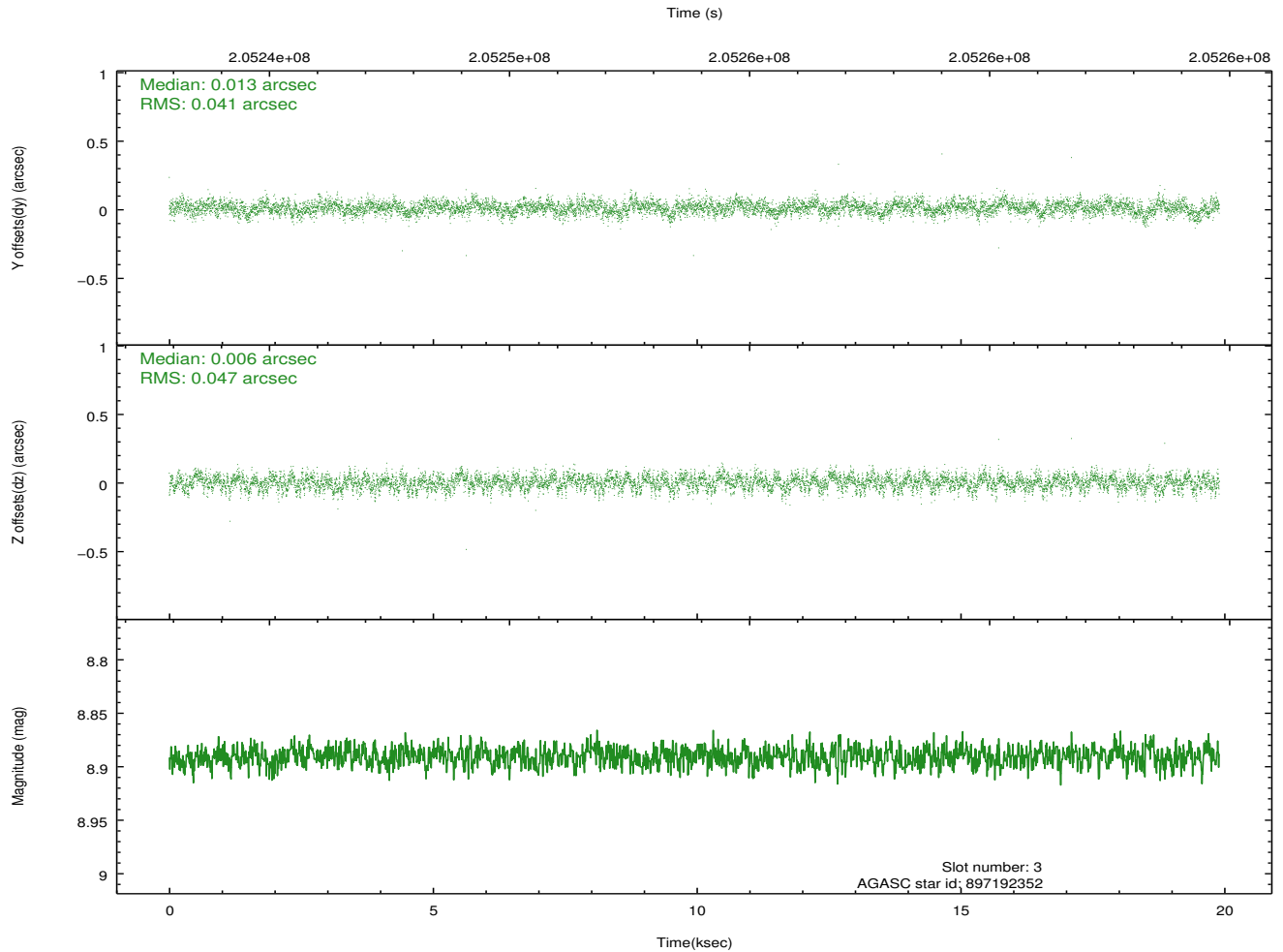
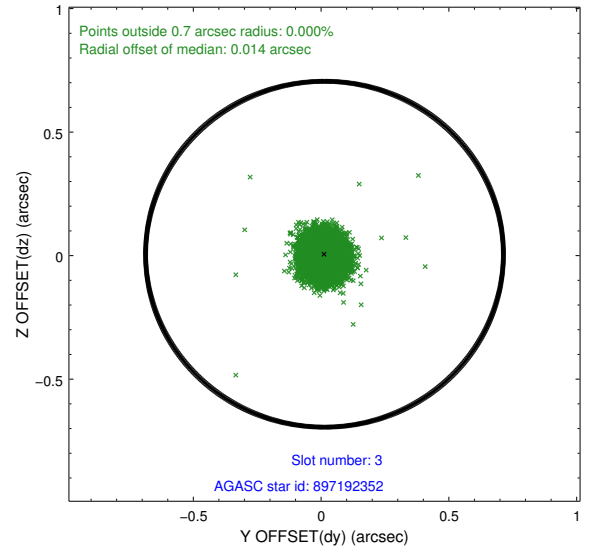
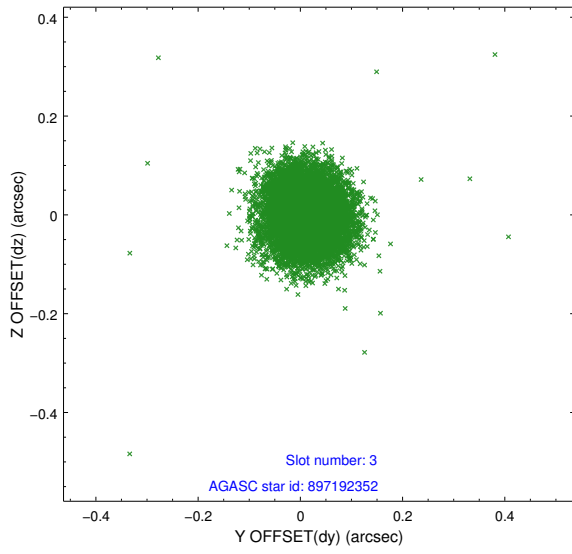


Slot Statistics

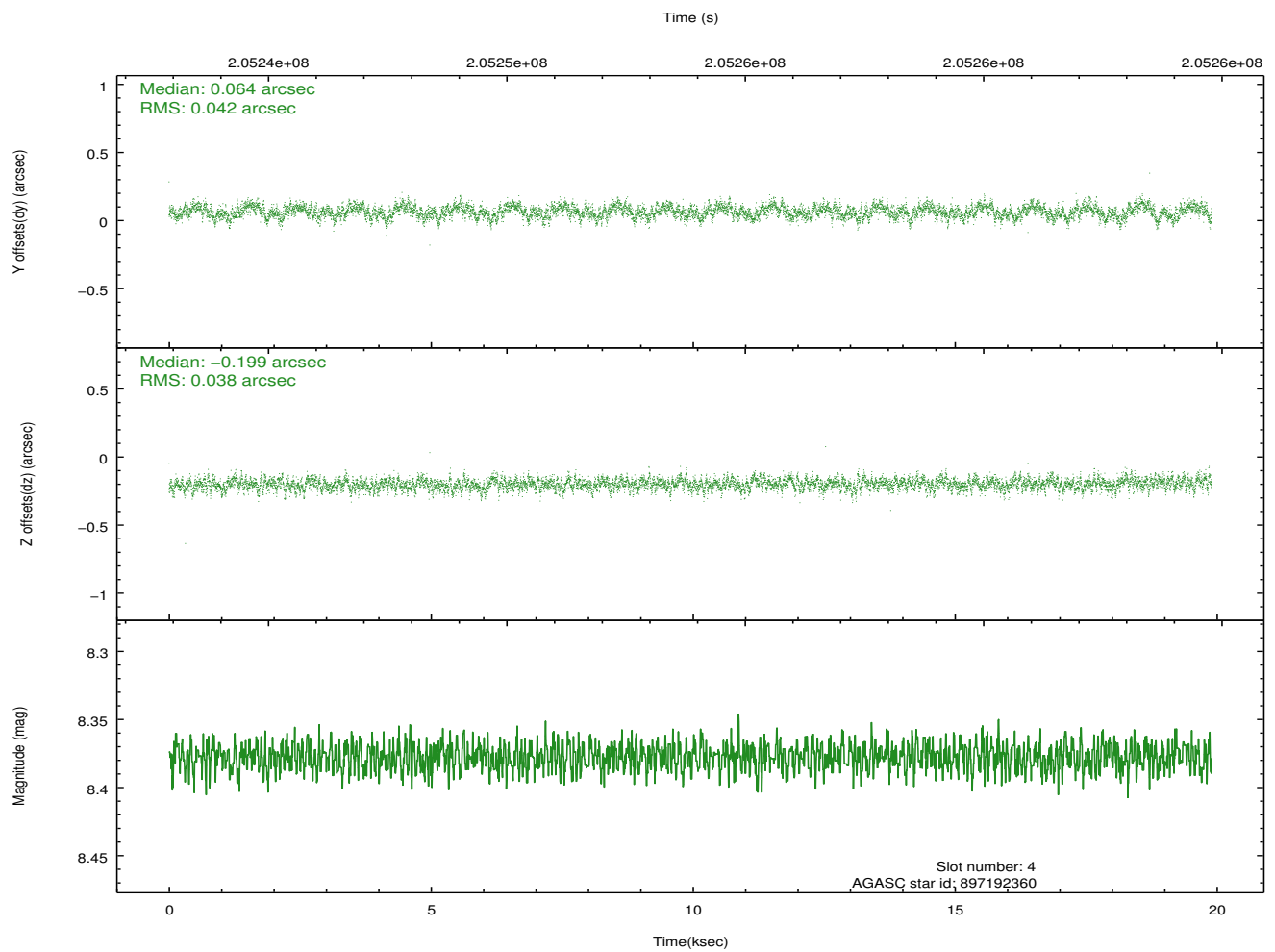
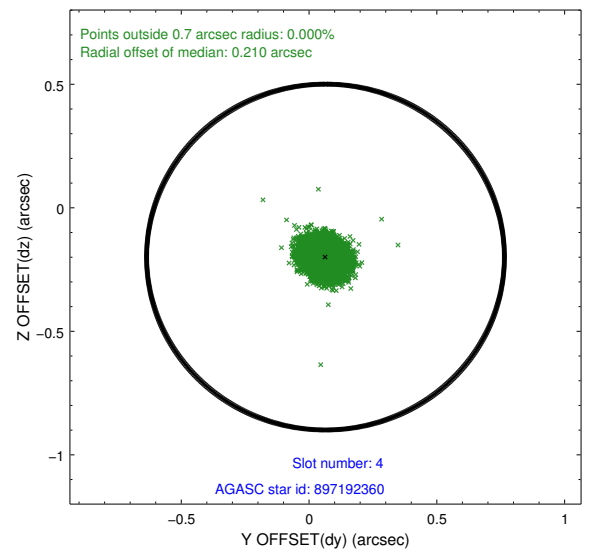
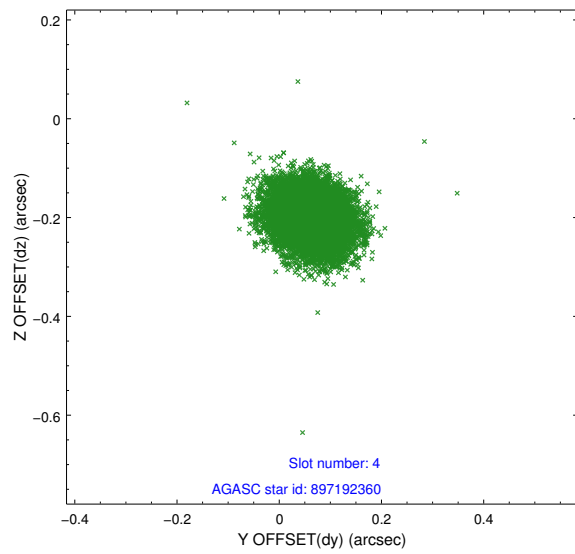
slot	status	id	mag	n_pts	med_dy	med_dz	dr1	dr2	ra	dec	mean_y	mean_z
0	FID	ACIS-S-1	7.18	4855	0.018	-0.028	0.009	0.018	0.000000	0.000000	937.88	-1725.31
1	FID	ACIS-S-4	7.21	4853	0.066	0.015	0.008	0.017	0.000000	0.000000	2155.49	178.66
2	FID	ACIS-S-5	7.23	4855	-0.110	0.025	0.007	0.022	0.000000	0.000000	-1810.83	172.58
3	GUIDE	897192352	8.89	9704	0.013	0.006	0.066	0.107	268.240875	-26.051045	-1228.03	-920.55
4	GUIDE	897192360	8.38	9704	0.064	-0.199	0.060	0.097	268.601647	-26.234891	-341.72	84.95
5	GUIDE	897715808	7.52	9705	-0.040	-0.023	0.047	0.079	269.101805	-26.773394	1889.75	1258.50
6	GUIDE	897718208	7.76	9709	-0.092	0.149	0.047	0.078	268.020133	-26.836183	1396.22	-2188.98
7	GUIDE	897194512	9.51	9698	0.055	0.074	0.094	0.154	268.006122	-25.792954	-2291.56	-1477.15

2.4 Star Slots

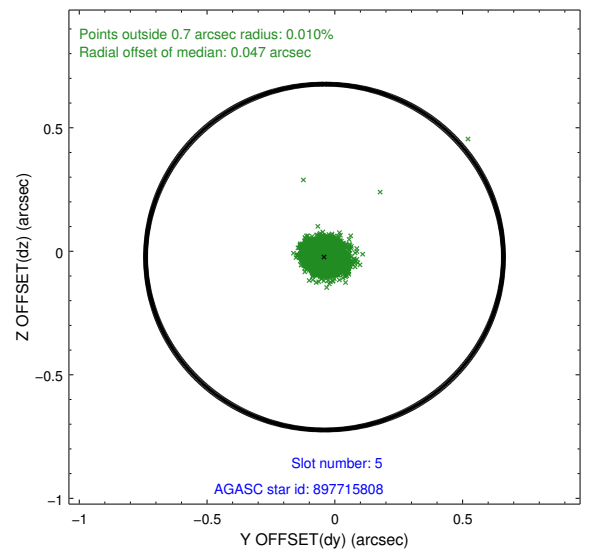
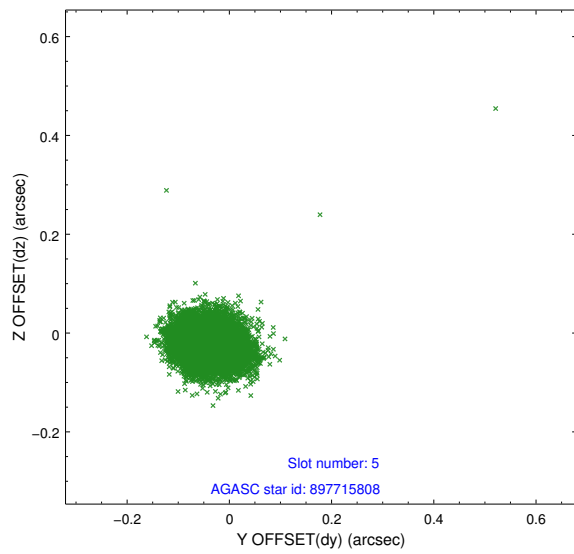
2.4.1 Slot 3



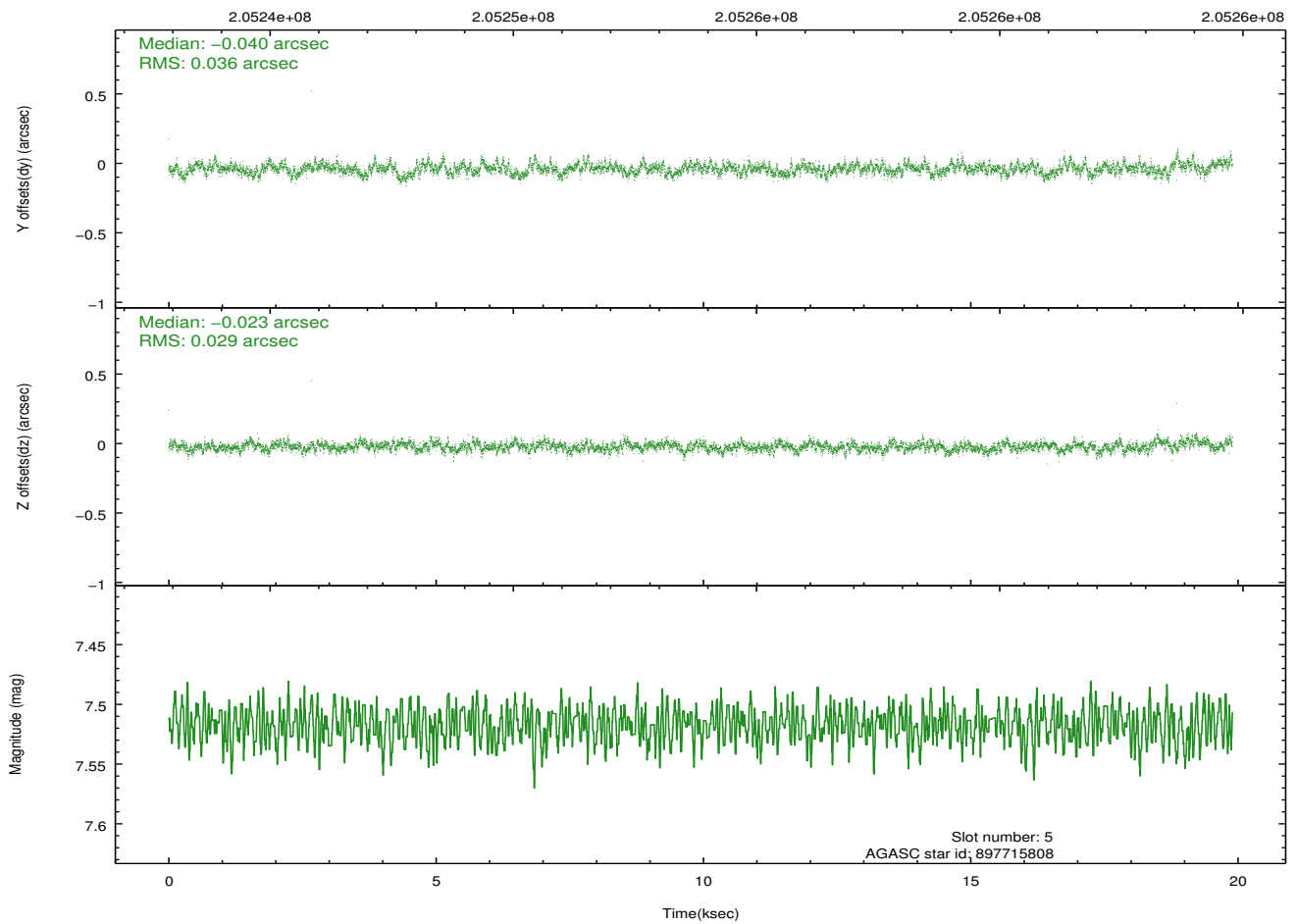
2.4.2 Slot 4



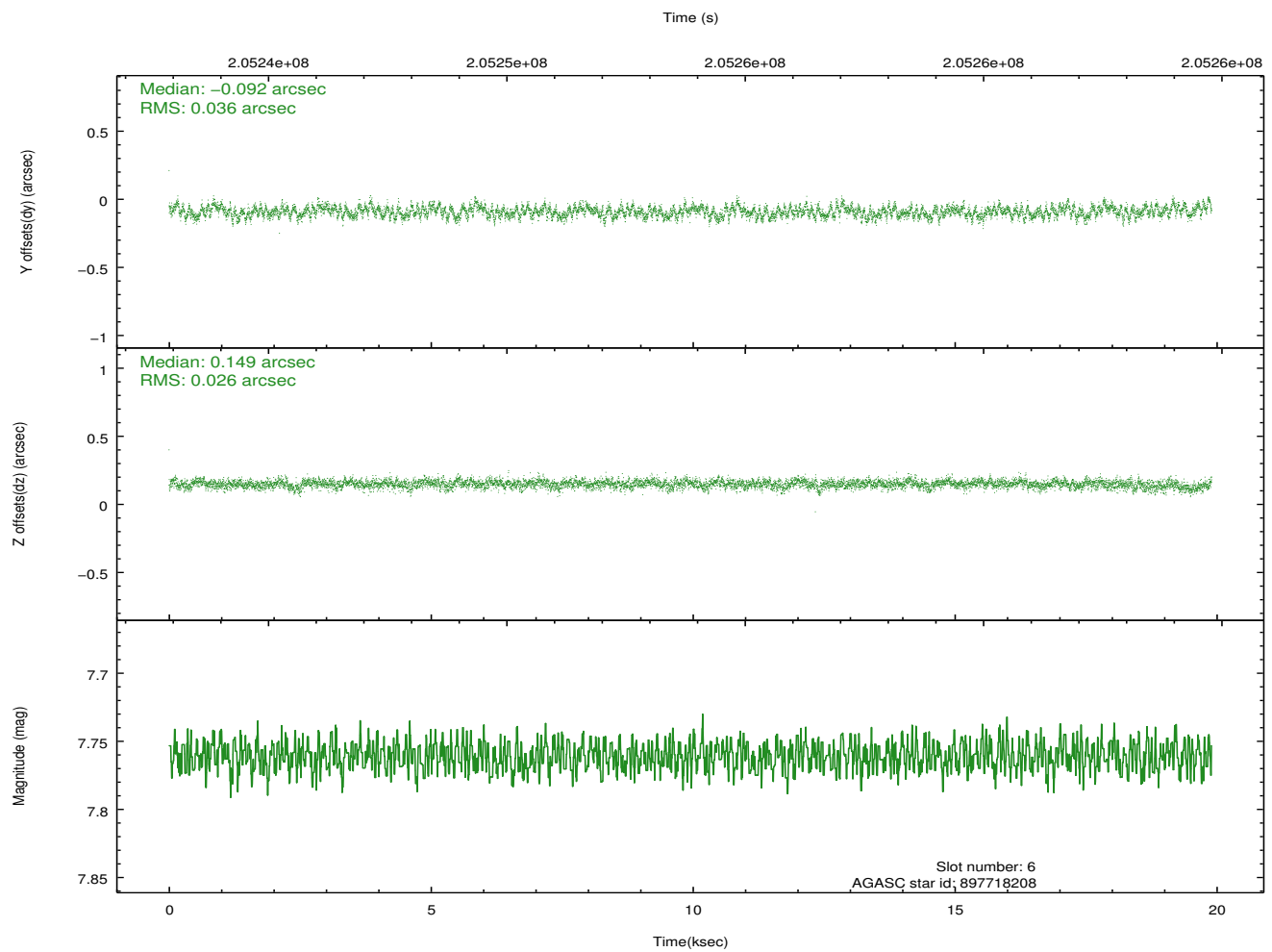
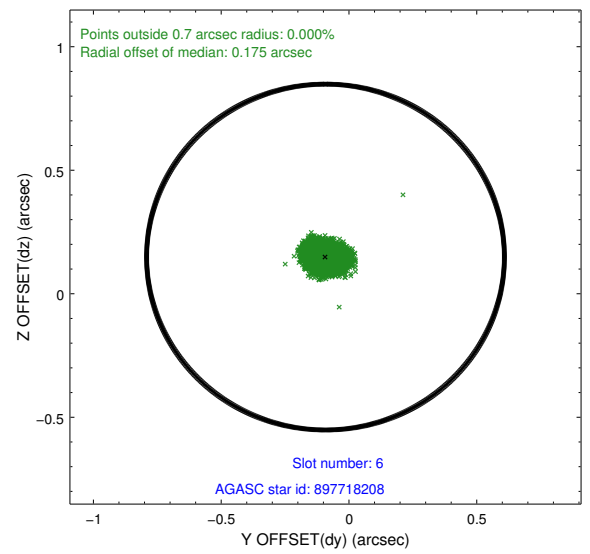
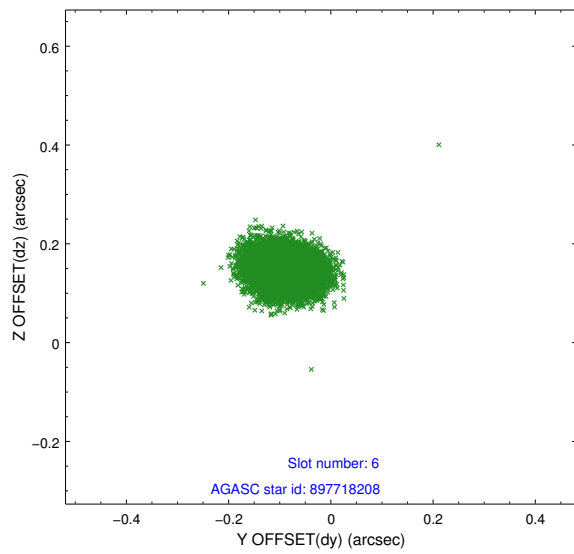
2.4.3 Slot 5



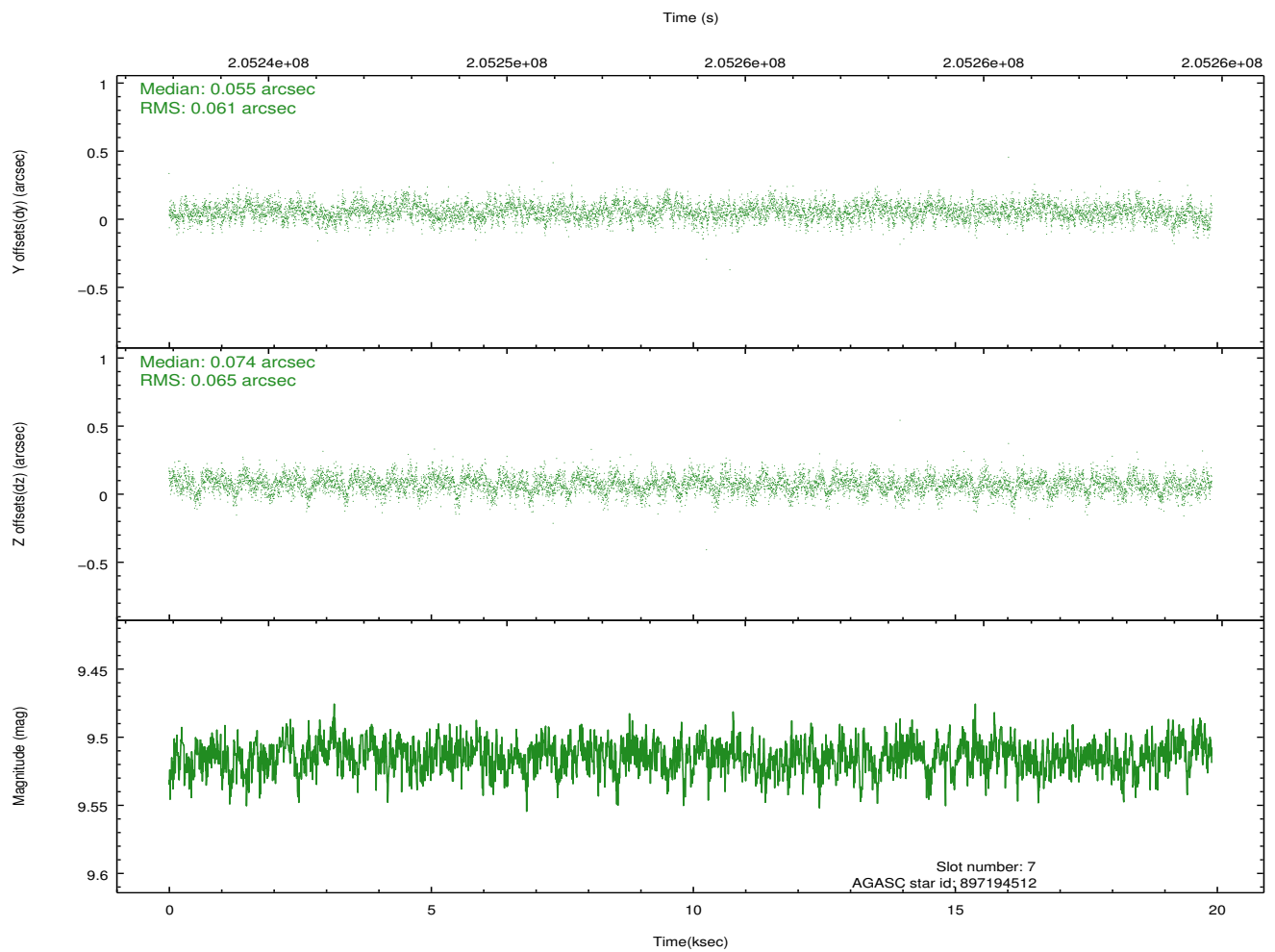
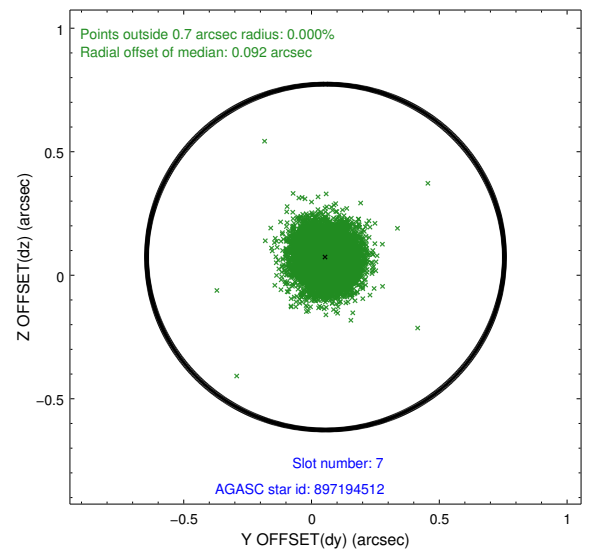
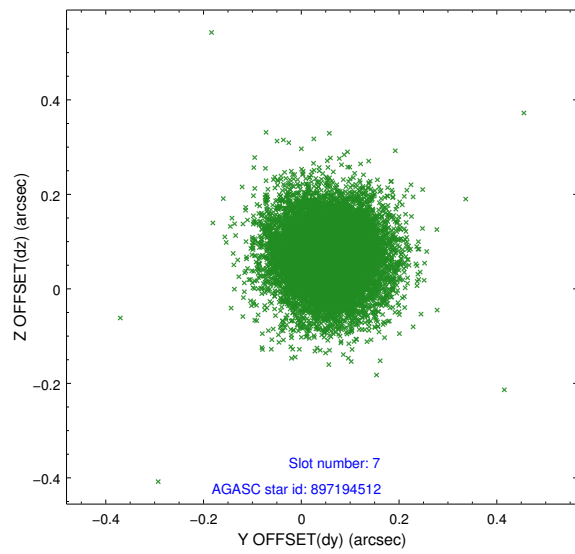
Time (s)



2.4.4 Slot 6

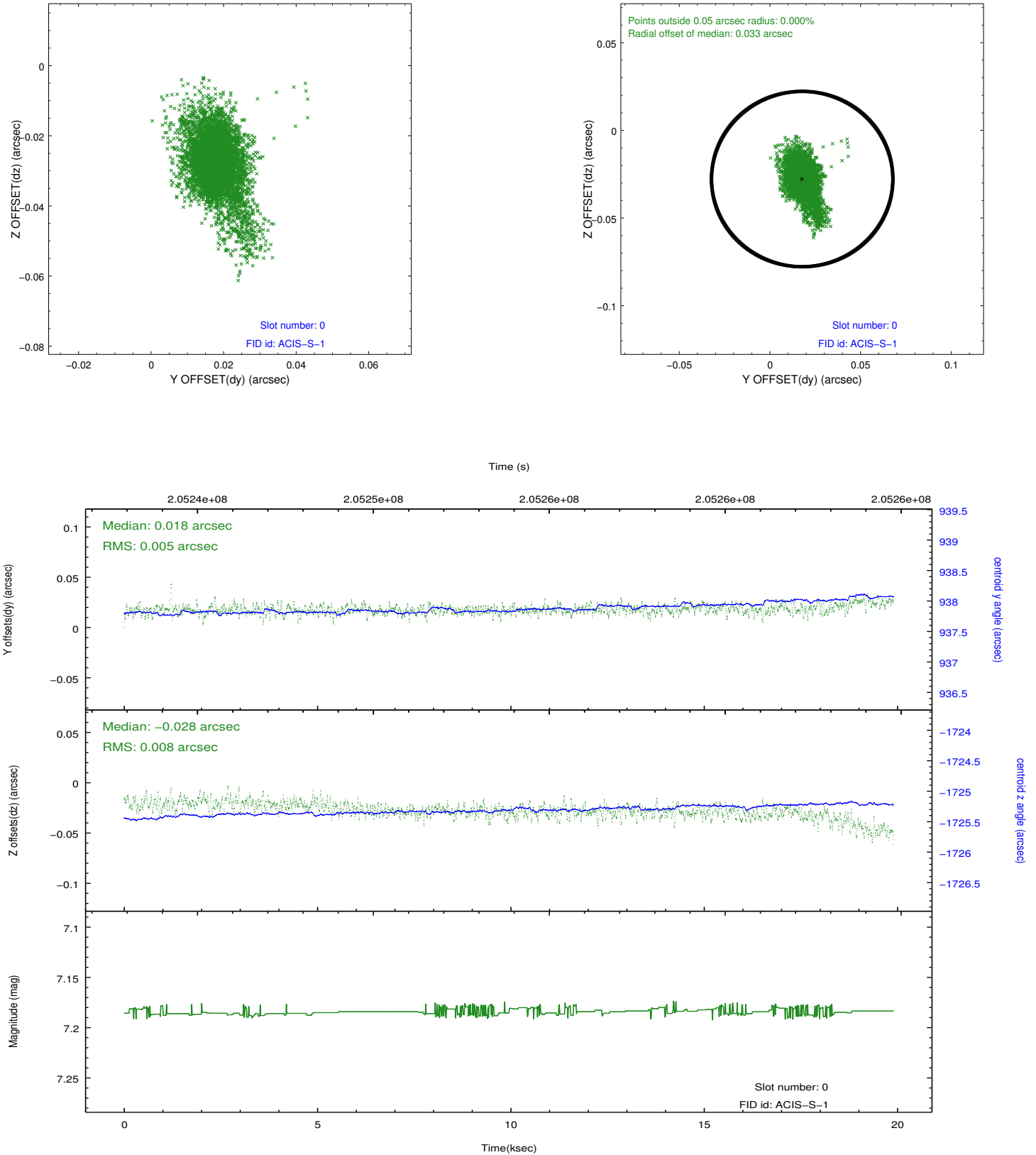


2.4.5 Slot 7

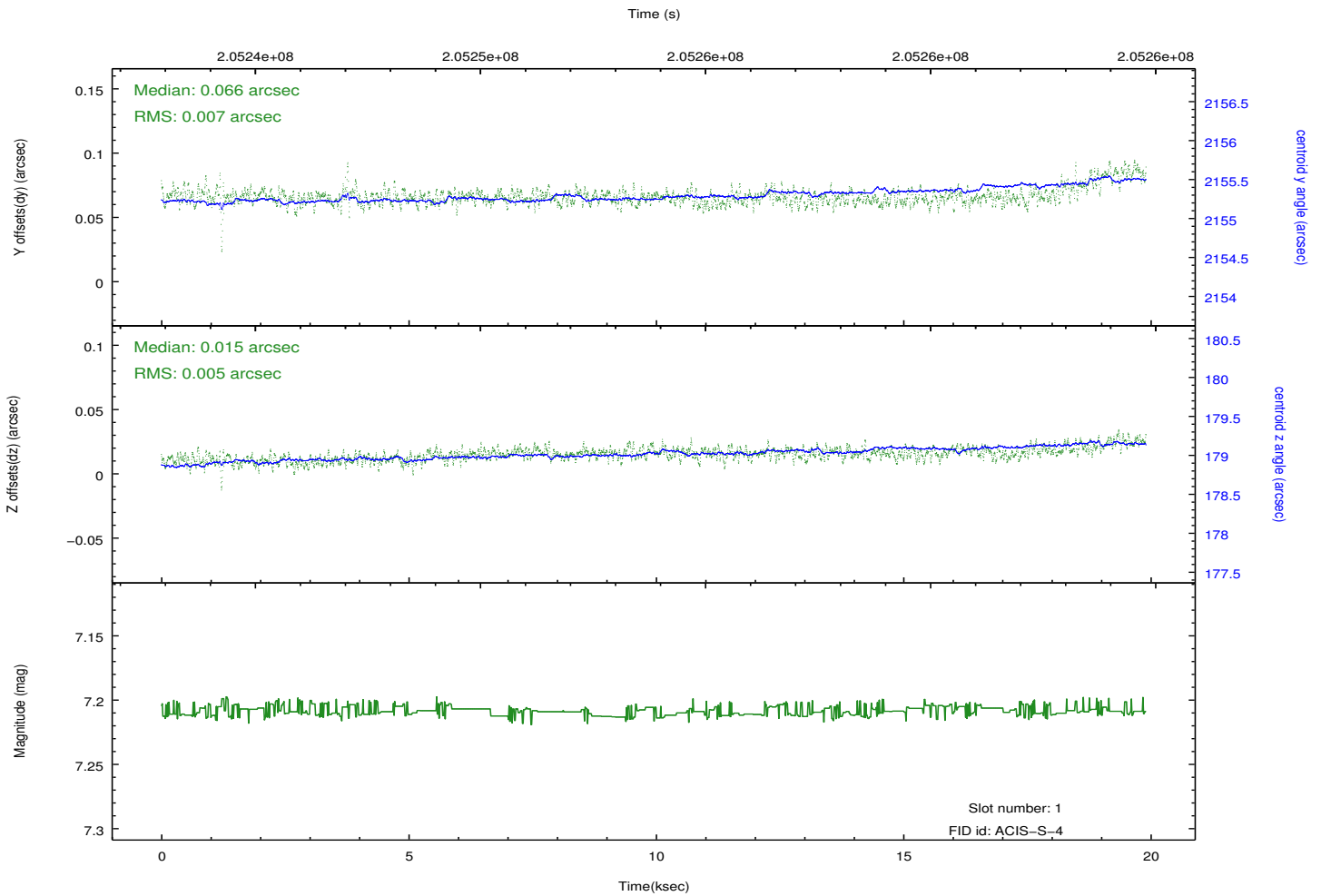
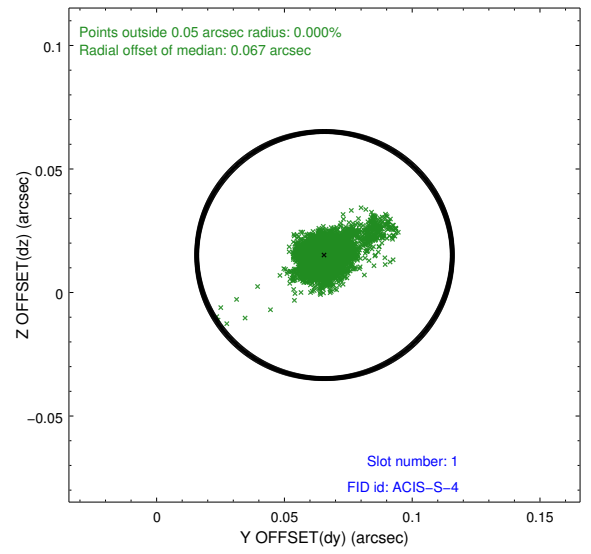
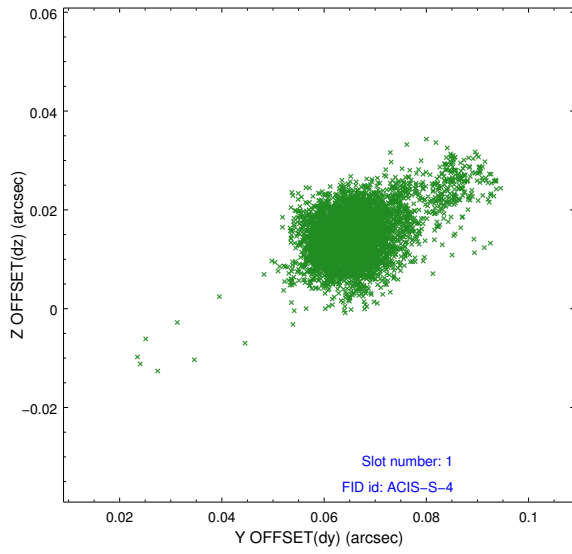


2.5 FID Slots

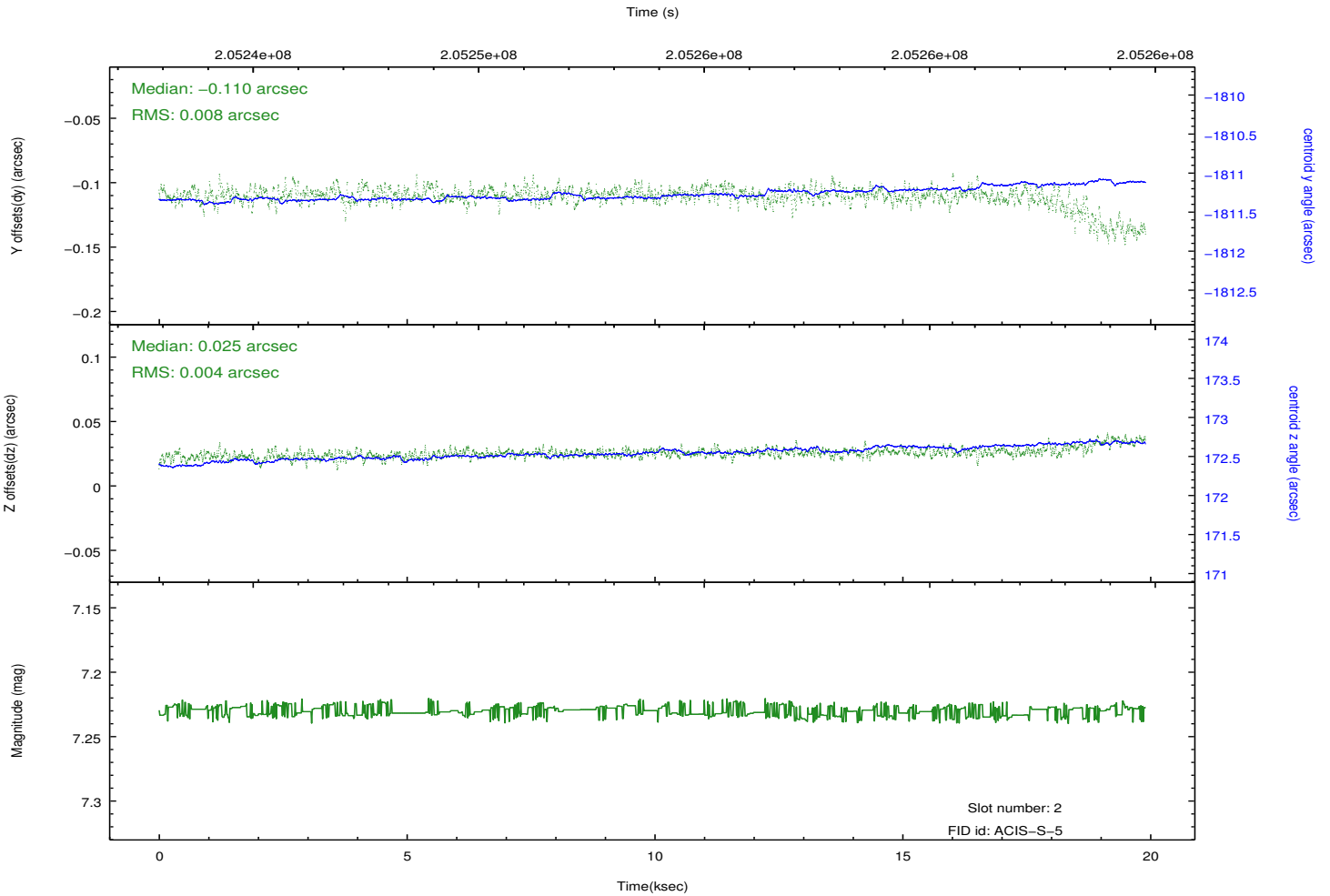
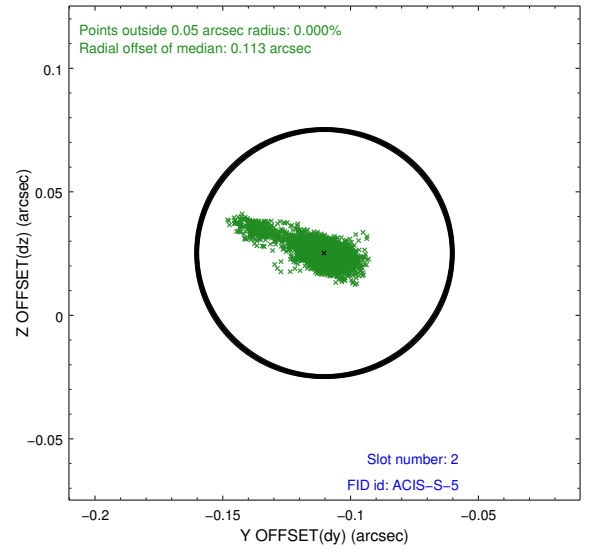
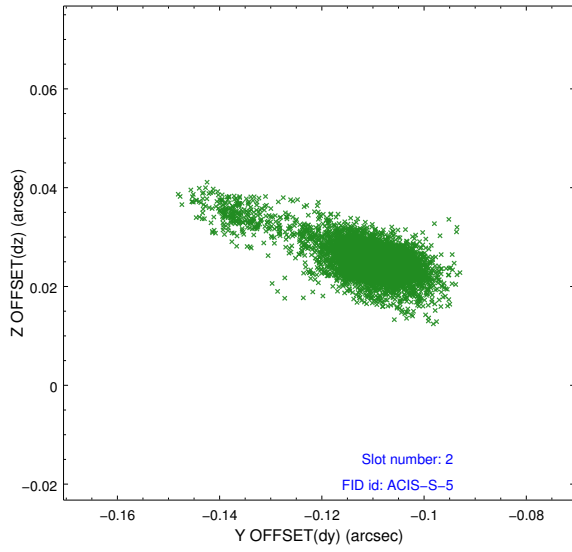
2.5.1 Slot 0



2.5.2 Slot 1



2.5.3 Slot 2



A Summary

A.1 Status

V&V Scientist	Beth Sundheim
V&V Date (YYYY-MM-DD)	2012.12.17
V&V Edition	1
V&V Disposition and Status	OK
V&V Charge Time	19.308

A.2 Comments