

V&V Reference Report

L2 ASCDS Version : 8.4.5

Observation 5250 - L2 Version 3
Chandra X-Ray Center

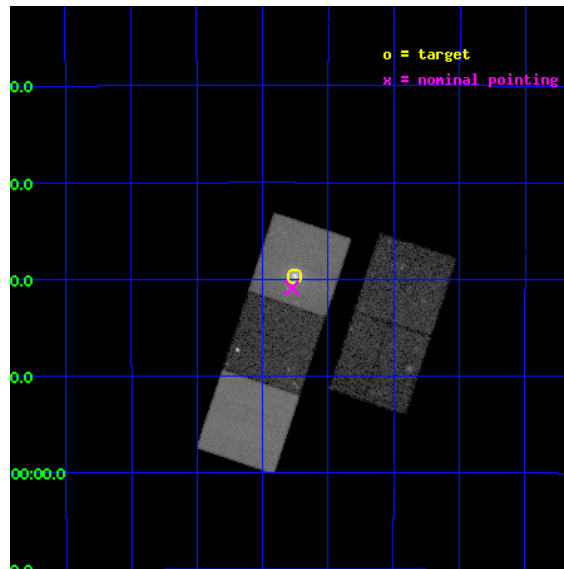
L2 Processing Date : Nov 8 2012

Contents

1	Front	2
2	OBI	3
2.1	OBI	3
2.1.1	Images	3
2.1.2	Bias	3
2.1.3	Parameters	4
2.1.4	Events	4
2.2	Compared Parameters	5
2.3	Aspect	6
2.4	Star Slots	9
2.4.1	Slot 3	9
2.4.2	Slot 4	10
2.4.3	Slot 5	11
2.4.4	Slot 6	12
2.4.5	Slot 7	13
2.5	FID Slots	14
2.5.1	Slot 0	14
2.5.2	Slot 1	15
2.5.3	Slot 2	16
A	Summary	17
A.1	Status	17
A.2	Comments	17

1 Front

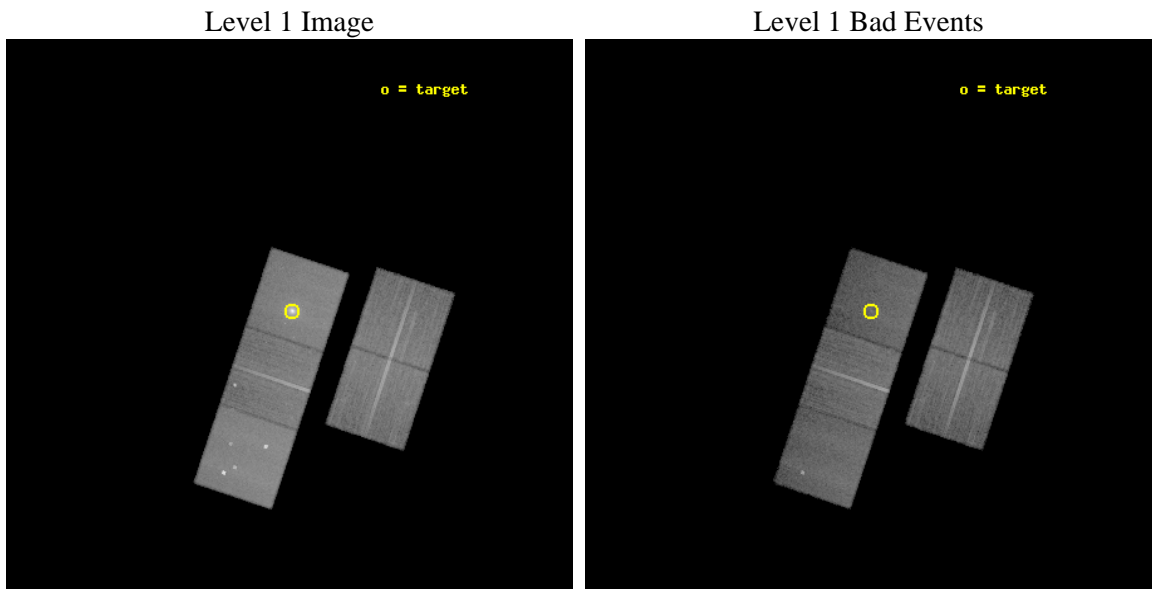
seq_num	800419	Sequence number
obs_id	5250	Observation id
title	A detailed Chandra study of the luminous lensing cluster MS2137.3-2353	Proposal title
observer	Prof. Steven Allen	Principal investigator
object	MS2137.3-2353	Source name
dtycycle	0	
cycle	P	events from which exps? Prim/Second/Both
ra_targ	325.06375	Observer's specified target RA [deg]
dec_targ	-23.661389	Observer's specified target Dec [deg]
ra_nom	325.06910466865	Nominal RA [deg]
dec_nom	-23.681574364866	Nominal Dec [deg]
roll_nom	288.4263233713	Nominal Roll [deg]
revision	3	Processing version of data
ontime	41084.299920976	Sum of GTIs [s]
livetime	40547.503296687	Livetime [s]
ontime2	41078.018000513	Sum of GTIs [s]
ontime3	41081.158950716	Sum of GTIs [s]
ontime5	41084.299920976	Sum of GTIs [s]
ontime6	41081.158950716	Sum of GTIs [s]
ontime7	41084.299920976	Sum of GTIs [s]
l2events	299579	Number of level 2 events



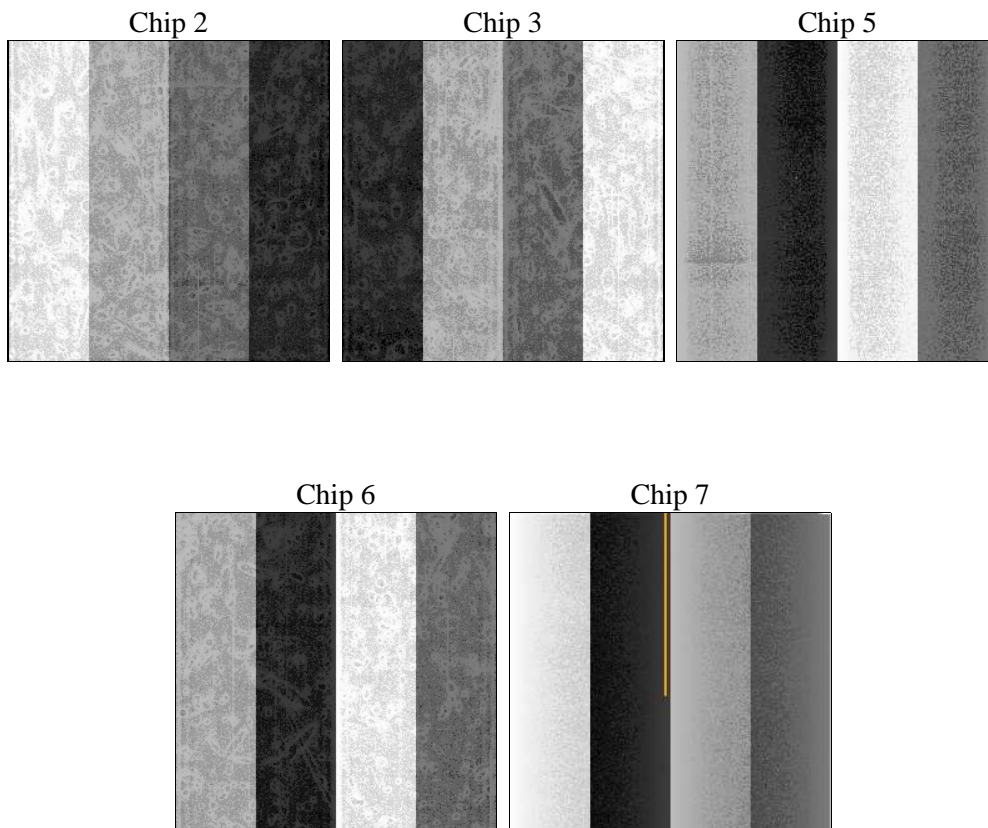
2 OBI

2.1 OBI

2.1.1 Images



2.1.2 Bias



2.1.3 Parameters

obi_num	0	Obi number	sched_exp_time	40954.045000	[s] Scheduled observation exposure time
ascdsver	8.4.5	Processing system revision	ontime	41084.299920976	Sum of GTIs [s]
caldbver	4.5.2	 	ontime2	41078.018000513	Sum of GTIs [s]
date	2012-11-08T03:21:54	Date and time of file creation	ontime3	41081.158950716	Sum of GTIs [s]
revision	3	Processing version of data	ontime5	41084.299920976	Sum of GTIs [s]
			ontime6	41081.158950716	Sum of GTIs [s]
			ontime7	41084.299920976	Sum of GTIs [s]
			l1events	1049130	Number of level 1 events

2.1.4 Events

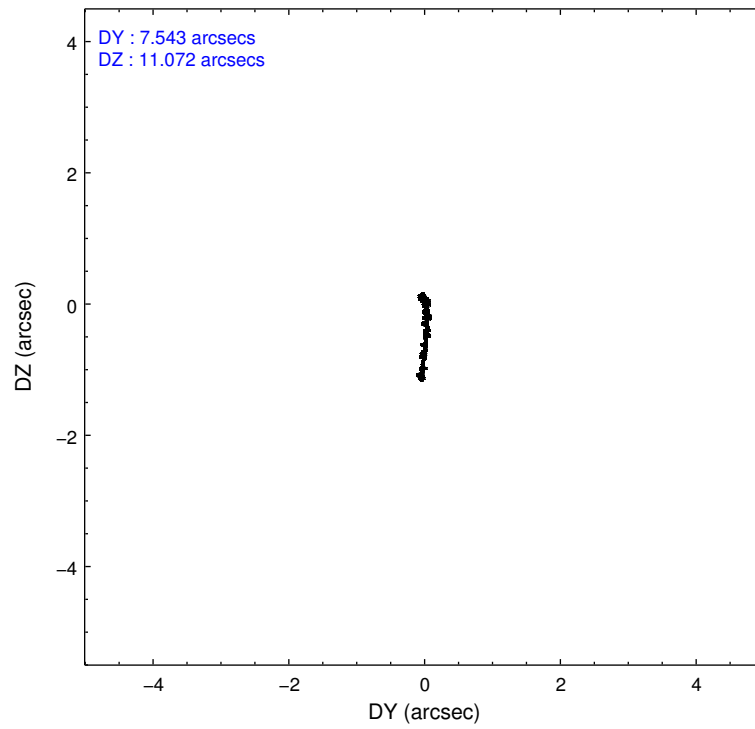
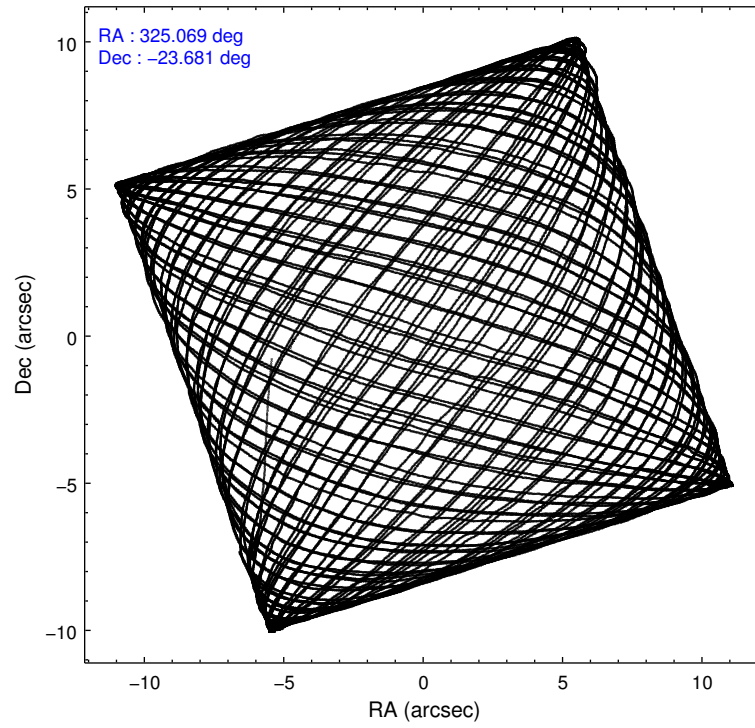
	ccd 2	ccd 3	ccd 5	ccd 6	ccd 7
level 1 events	180714	173982	266753	183971	243710
rejected events	160107	155966	127181	160614	110313
rejected %	88%	89%	47%	87%	45%

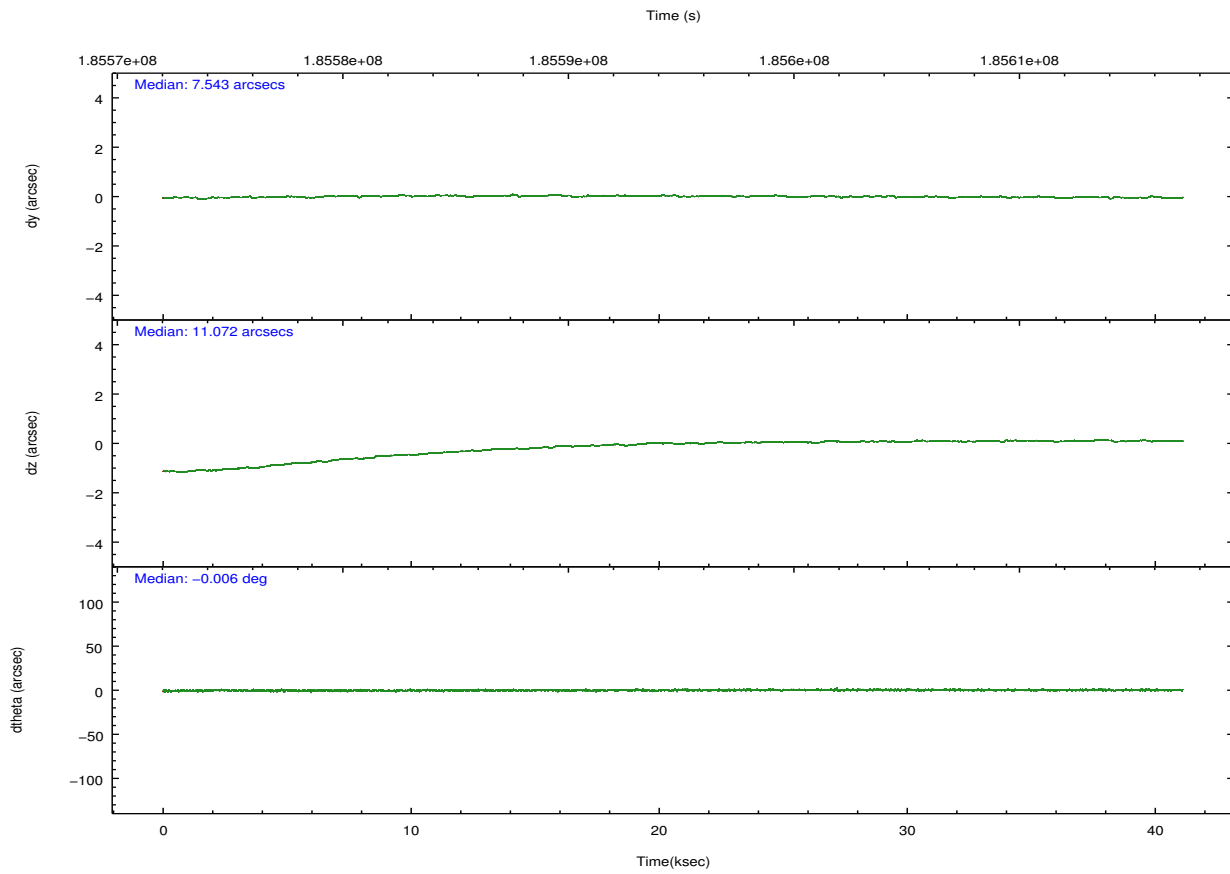
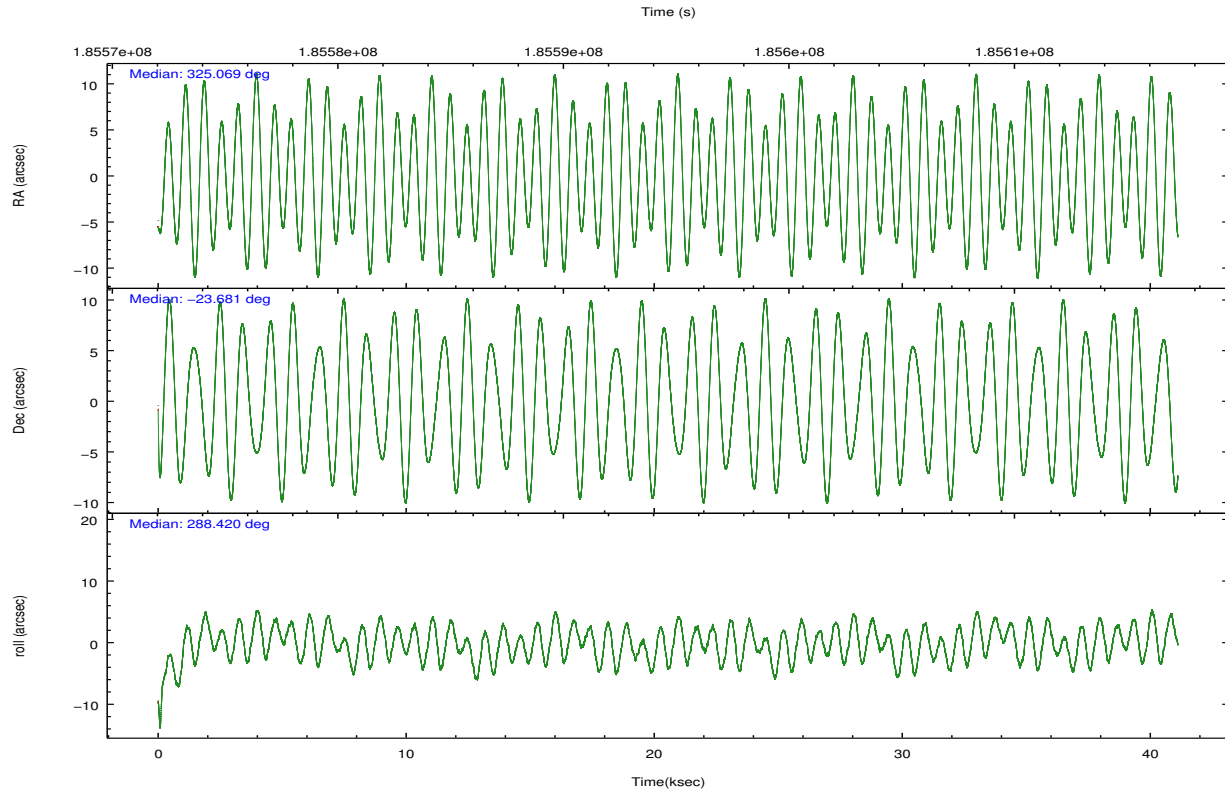
	ccd 2	ccd 3	ccd 5	ccd 6	ccd 7
grade 0 events	8552	6933	21614	10189	21001
	4%	3%	8%	5%	8%
grade 1 events	94	94	845	94	198
	0%	0%	0%	0%	0%
grade 2 events	4576	3656	42180	4673	29148
	2%	2%	15%	2%	11%
grade 3 events	2031	2081	6168	2208	13373
	1%	1%	2%	1%	5%
grade 4 events	2152	1979	5934	2153	13429
	1%	1%	2%	1%	5%
grade 5 events	5951	6844	19908	7231	21337
	3%	3%	7%	3%	8%
grade 6 events	3297	3370	63698	4142	56467
	1%	1%	23%	2%	23%
grade 7 events	154061	149025	106406	153281	88757
	85%	85%	39%	83%	36%

2.2 Compared Parameters

Parameter	Planned	Actual	Parameter	Planned	Actual
Instrument	ACIS	ACIS	Obspar format version number	7	7
Detector	ACIS-23567	ACIS-23567	Obspar file type	PREDICTED	ACTUAL
Grating	NONE	NONE	Obspar update status	NONE	UPDATED
Data mode	VFAINT	VFAINT	Number of optional ACIS chips dropped	0	0
Observation mode	POINTING	POINTING	On-chip summing requested	N	N
[deg] Pointing RA	325.046594	325.0691046686504	Subarray requested	NONE	NONE
[deg] Pointing Dec	-23.663766	-23.6815743648657	Alternating exposures requested	N	N
[deg] Pointing Roll	288.260659	288.4263233713046	[s] Primary exposure time	0.000000	3.1
[mm] SIM focus pos	-0.684267	-0.6828225247311905			
[mm] SIM defocus	0	0.001444936568705701			
[mm] SIM translation stage pos	-190.132523	-190.1400660498719			
[mm] SIM translation stage offset	0	0.00754346686406393			
[s] Observation start time (MET)	185574240.184000	185573267.06109			
Observation start date	2003-11-18T20:22:56	2003-11-18T20:07:47			
[s] Observation end time (MET)	185615194.184000	185615507.82542			
Observation end date	2003-11-19T07:45:30	2003-11-19T07:51:47			
Read mode	TIMED	TIMED			

2.3 Aspect



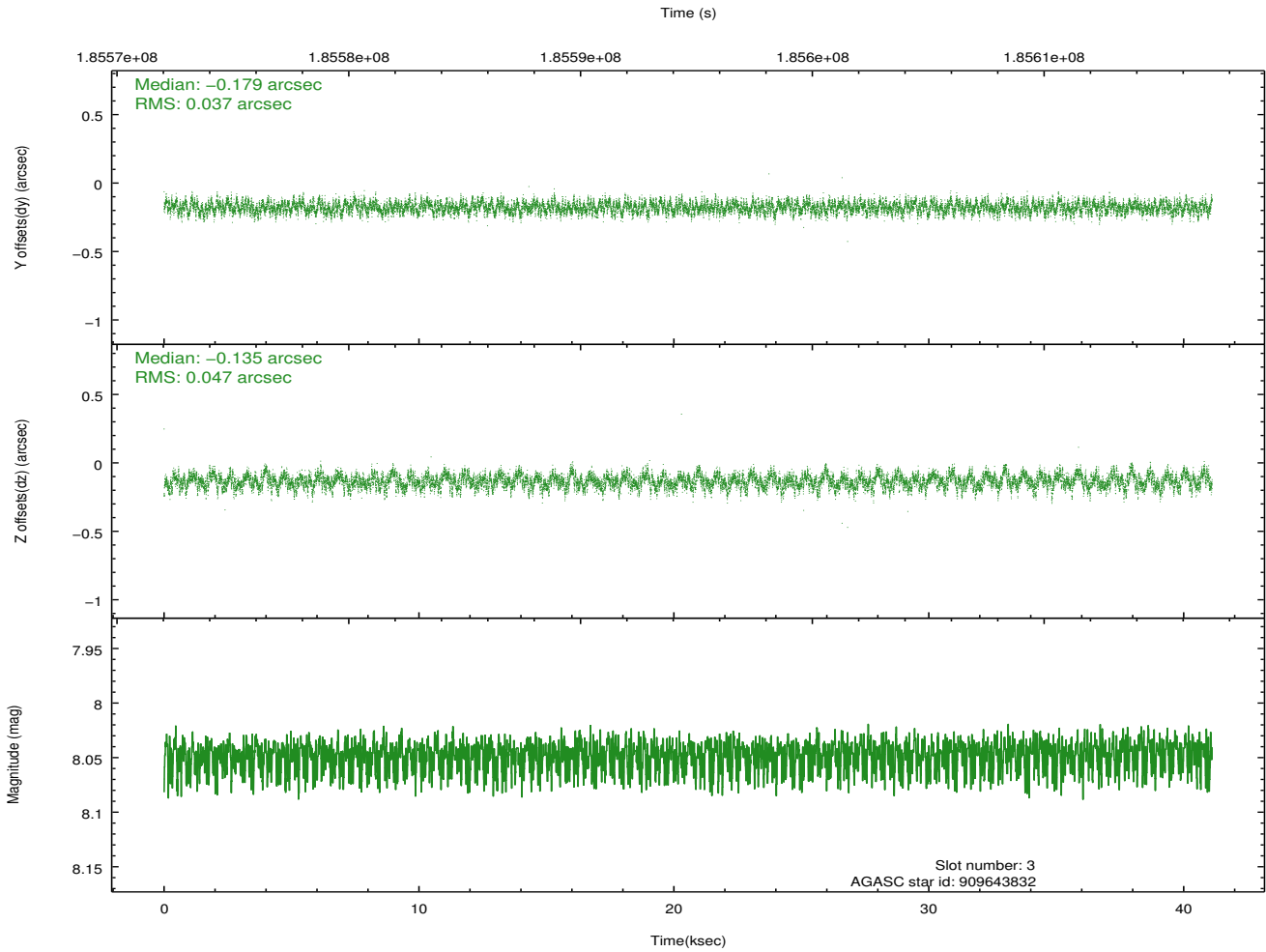
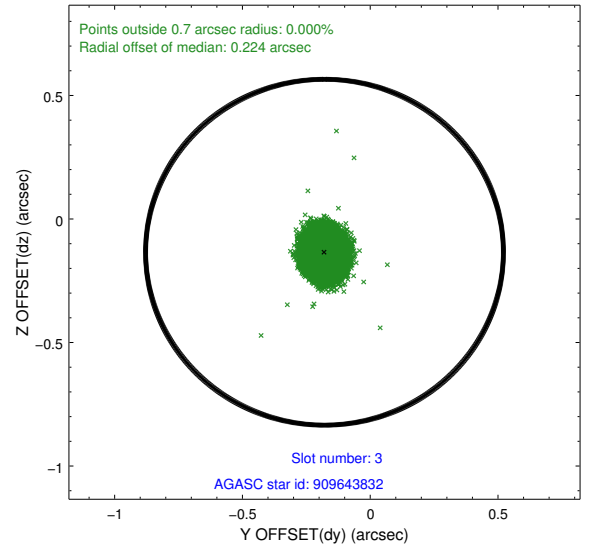
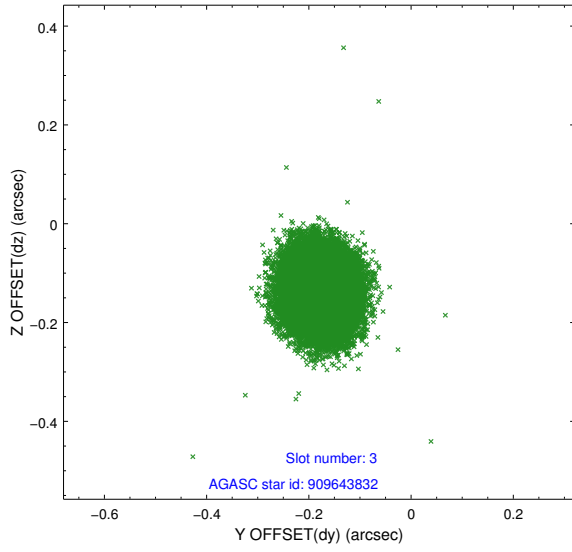


Slot Statistics

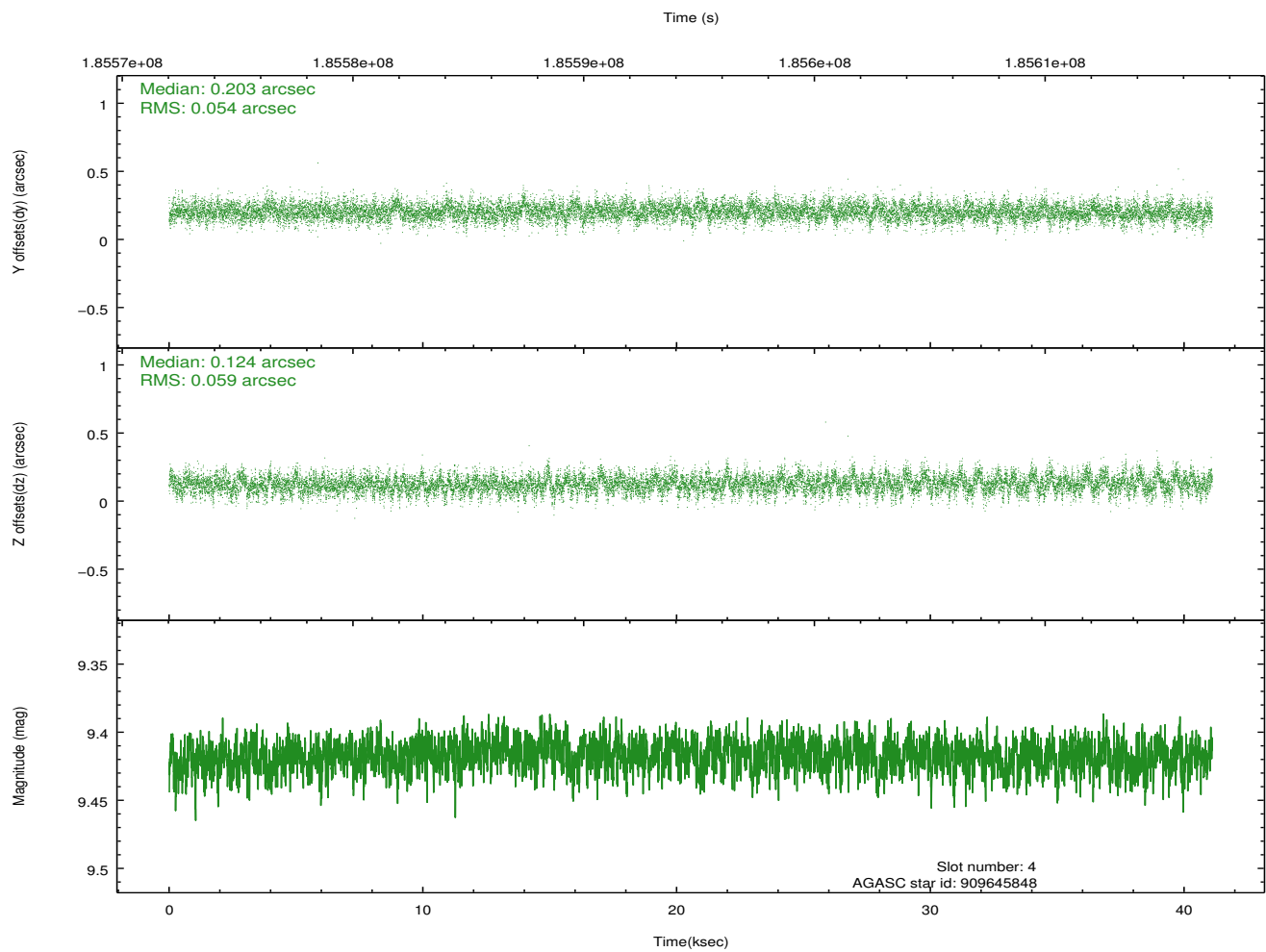
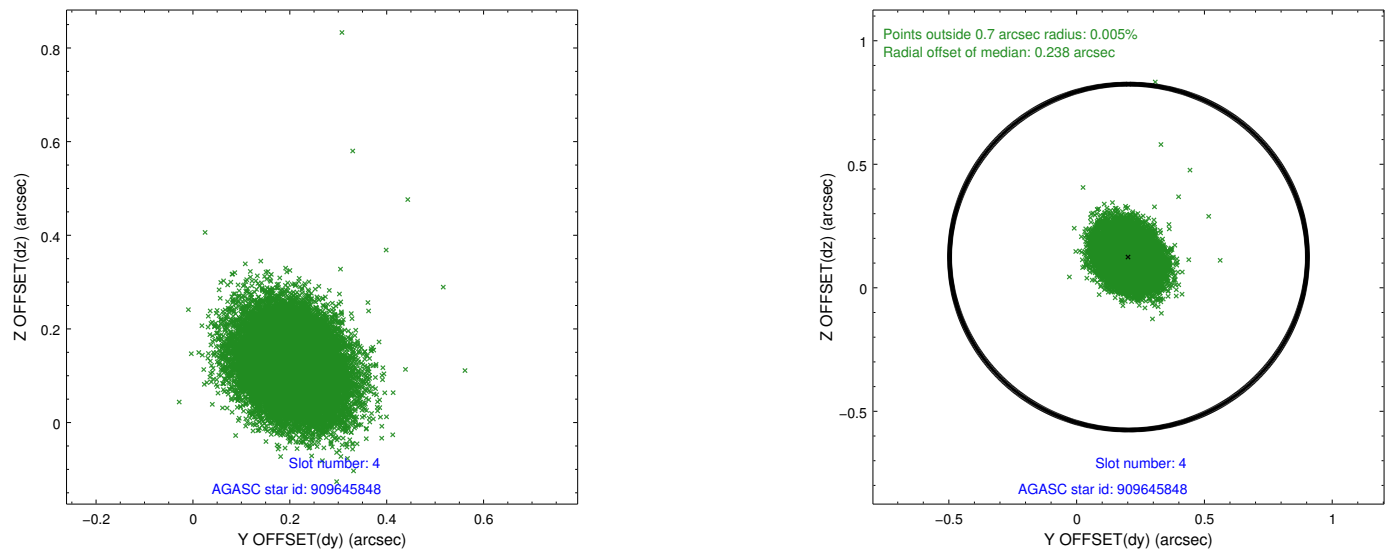
slot	status	id	mag	n_pts	med_dy	med_dz	dr1	dr2	ra	dec	mean_y	mean_z
0	FID	ACIS-S-1	7.18	10027	-0.013	-0.079	0.013	0.057	0.000000	0.000000	935.72	-1727.82
1	FID	ACIS-S-4	7.20	10027	0.038	0.021	0.007	0.014	0.000000	0.000000	2153.17	176.43
2	FID	ACIS-S-6	7.34	10028	-0.049	0.068	0.012	0.043	0.000000	0.000000	401.62	813.82
3	GUIDE	909643832	8.05	20056	-0.179	-0.135	0.064	0.101	324.425965	-23.695091	-529.34	-1979.56
4	GUIDE	909645848	9.42	20046	0.203	0.124	0.084	0.140	325.032563	-24.266321	2046.12	-723.07
5	GUIDE	909647192	8.99	20050	-0.180	0.081	0.068	0.110	324.987552	-23.199068	-1649.63	338.68
6	GUIDE	910169400	7.33	20056	0.144	-0.135	0.050	0.084	324.740991	-24.449844	2375.36	-1837.98
7	GUIDE	909647840	10.07	20027	0.015	0.066	0.129	0.204	325.780043	-23.638011	676.12	2324.44

2.4 Star Slots

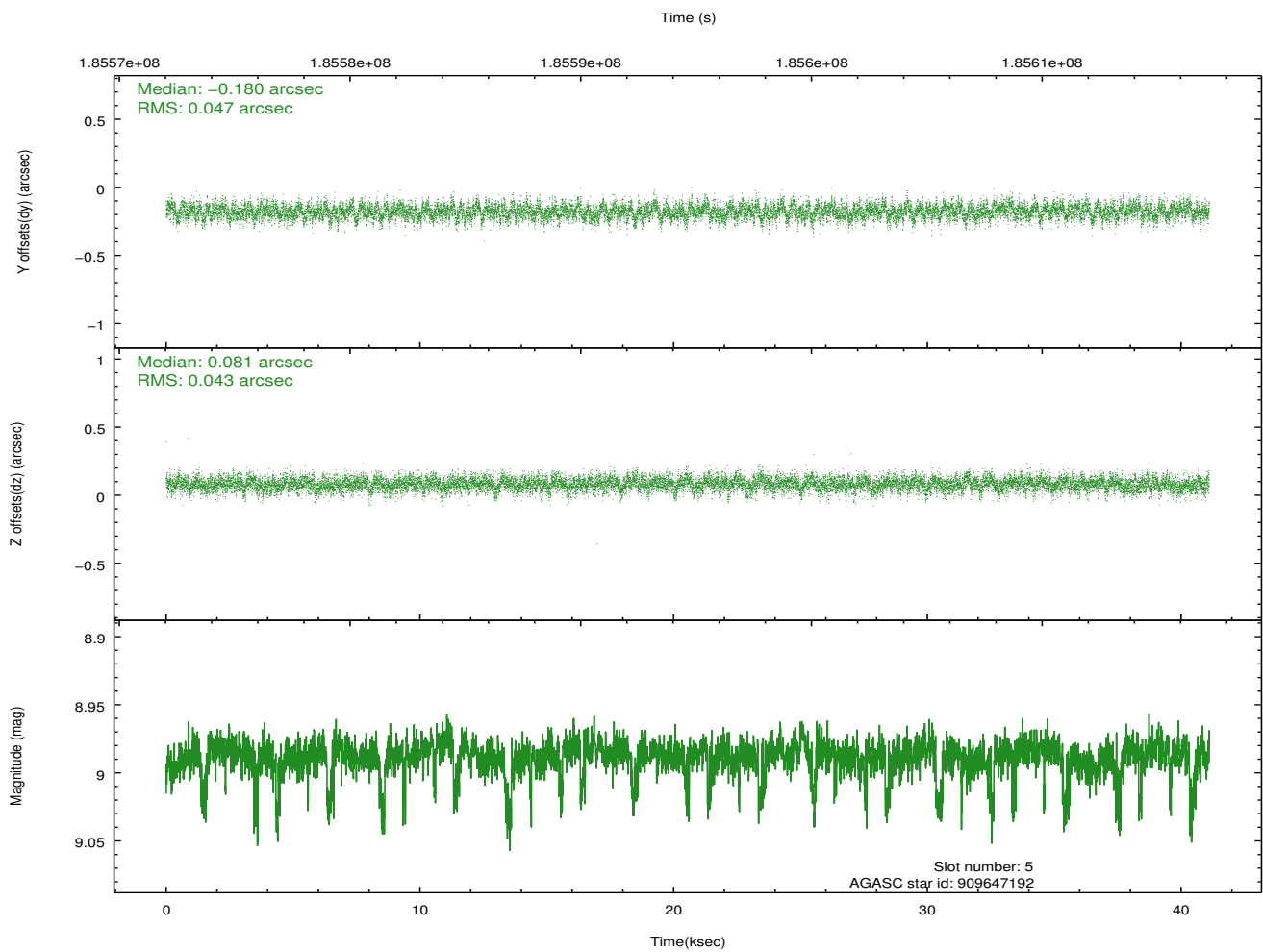
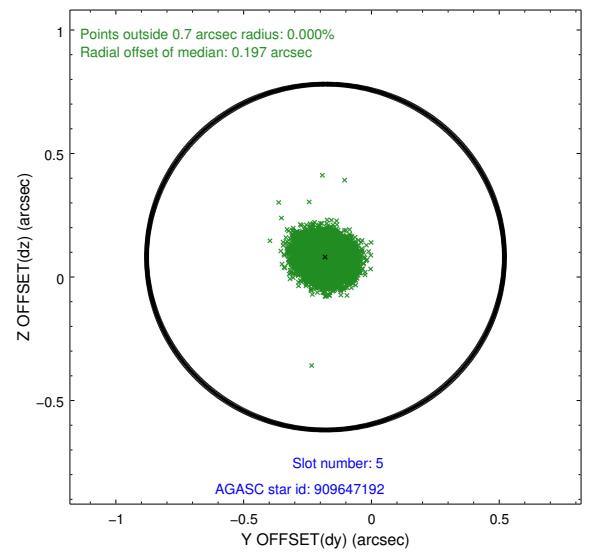
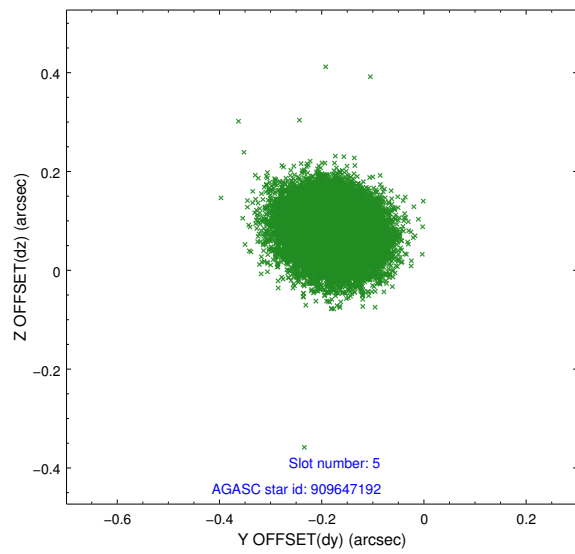
2.4.1 Slot 3



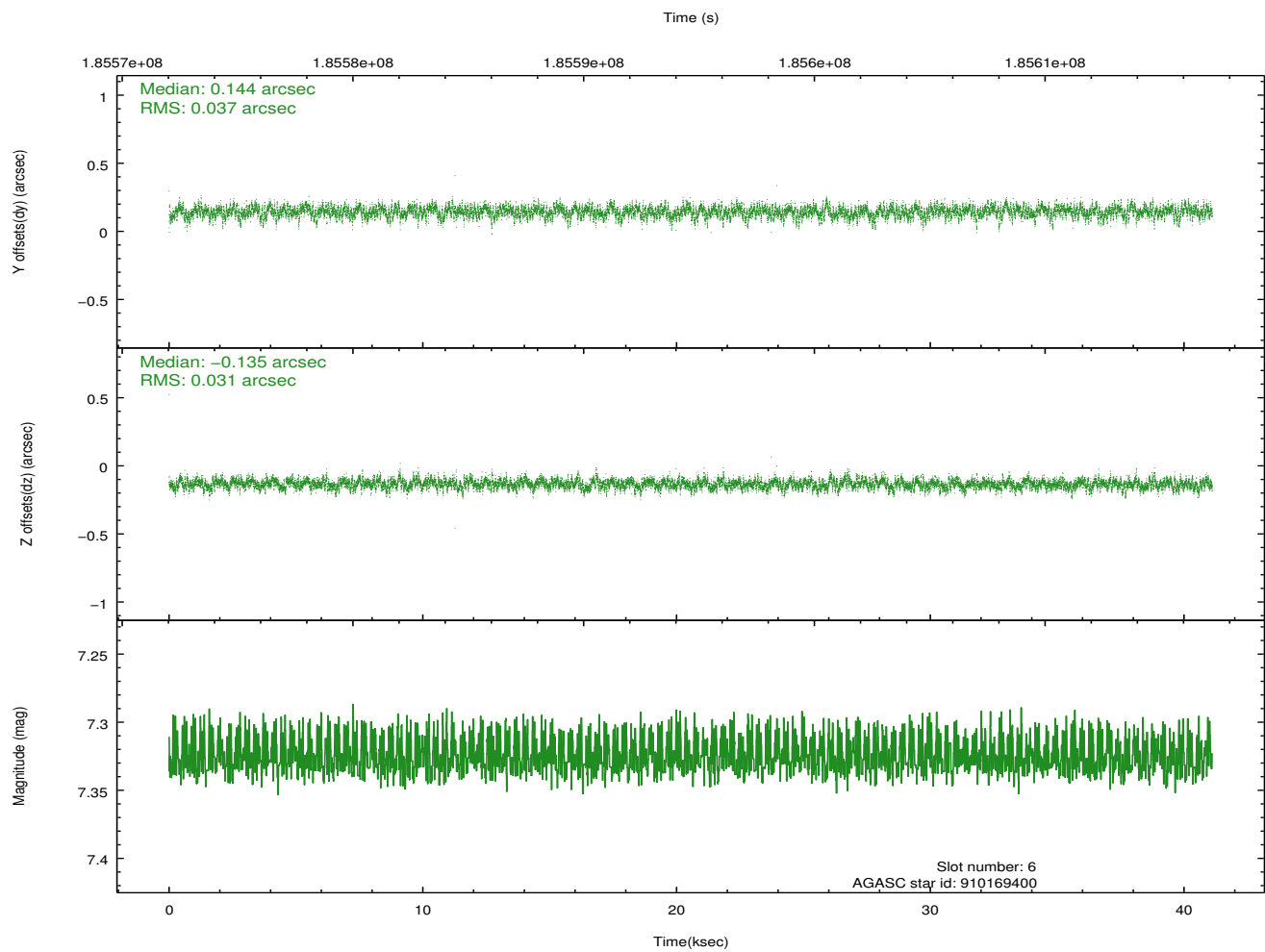
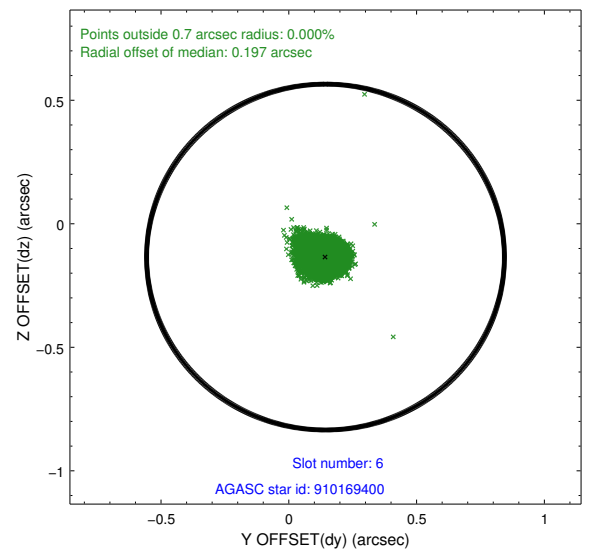
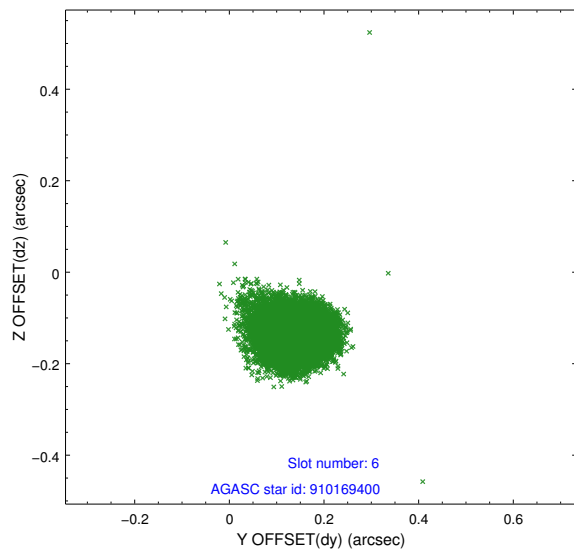
2.4.2 Slot 4



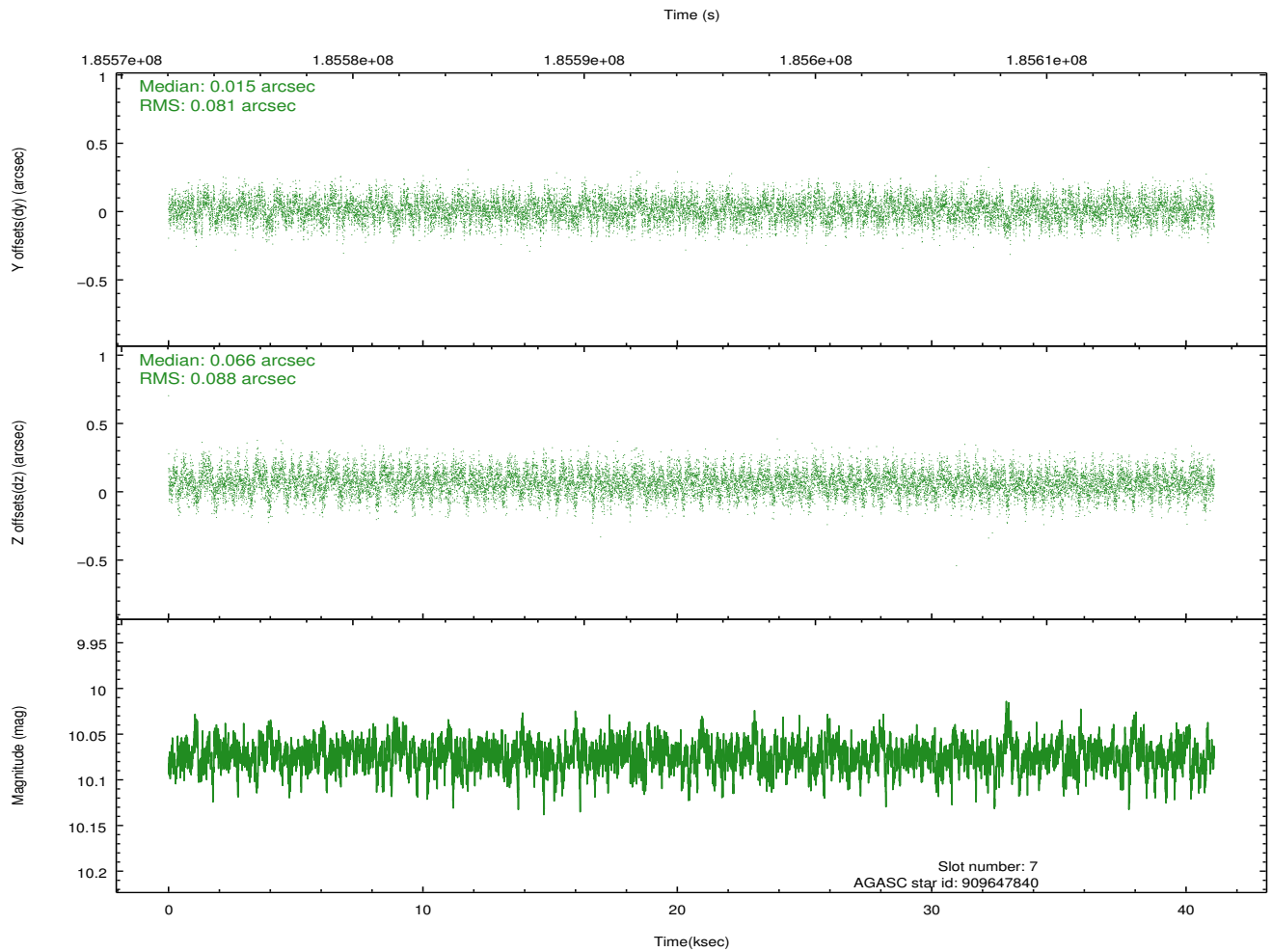
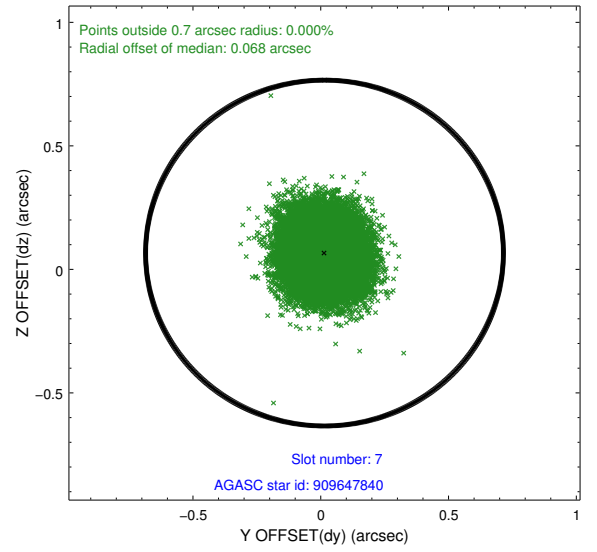
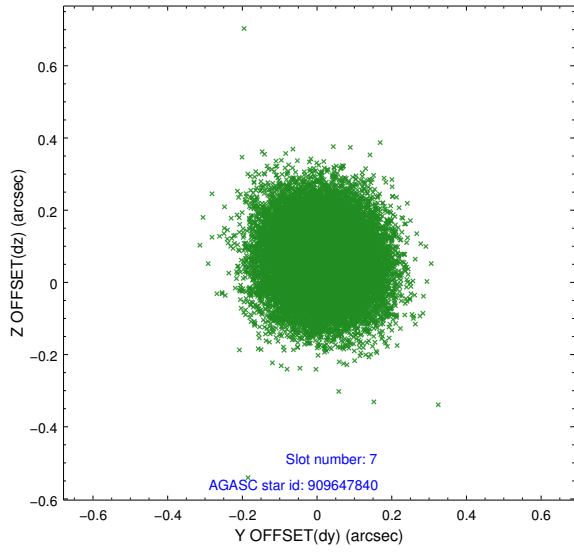
2.4.3 Slot 5



2.4.4 Slot 6

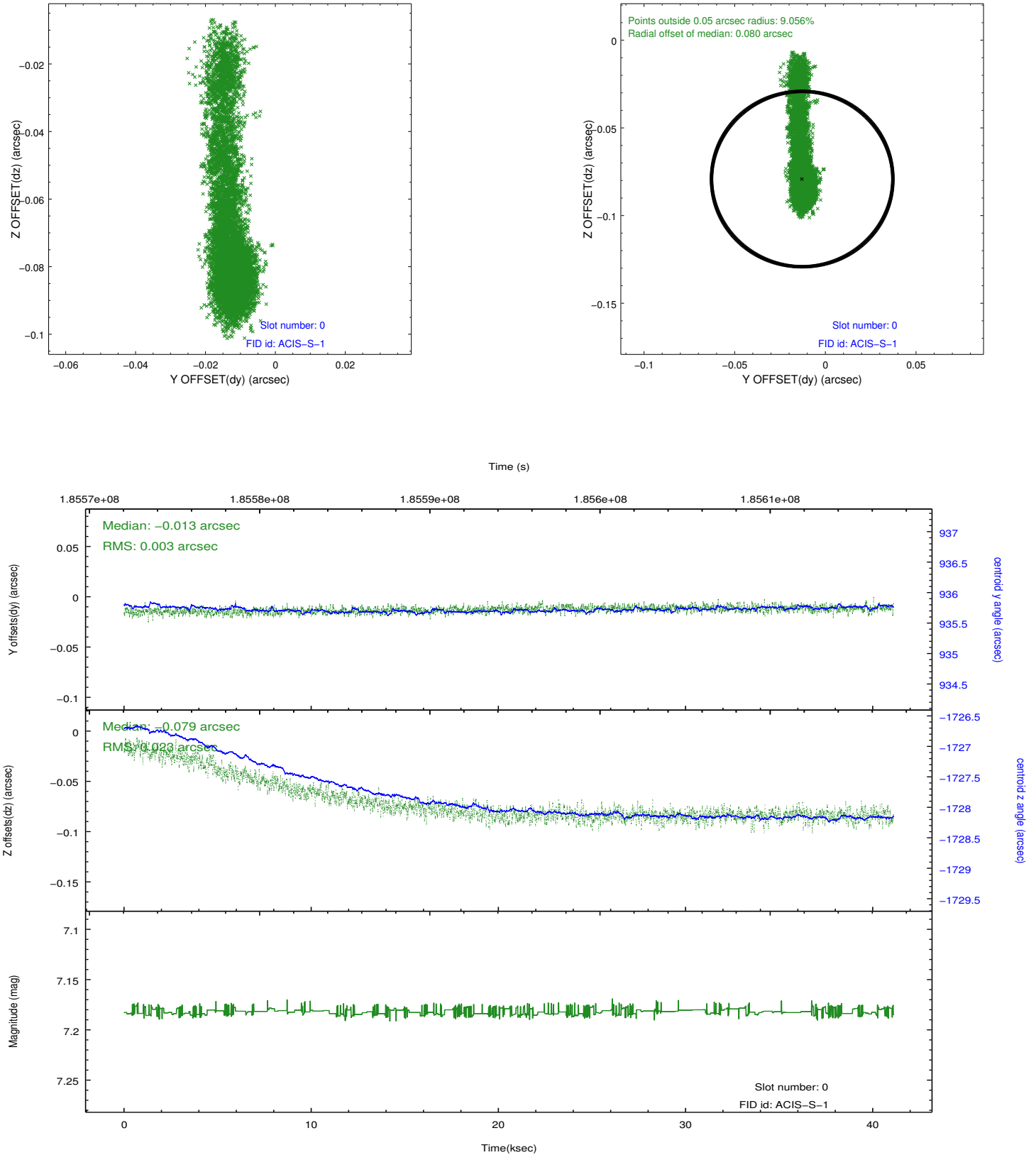


2.4.5 Slot 7

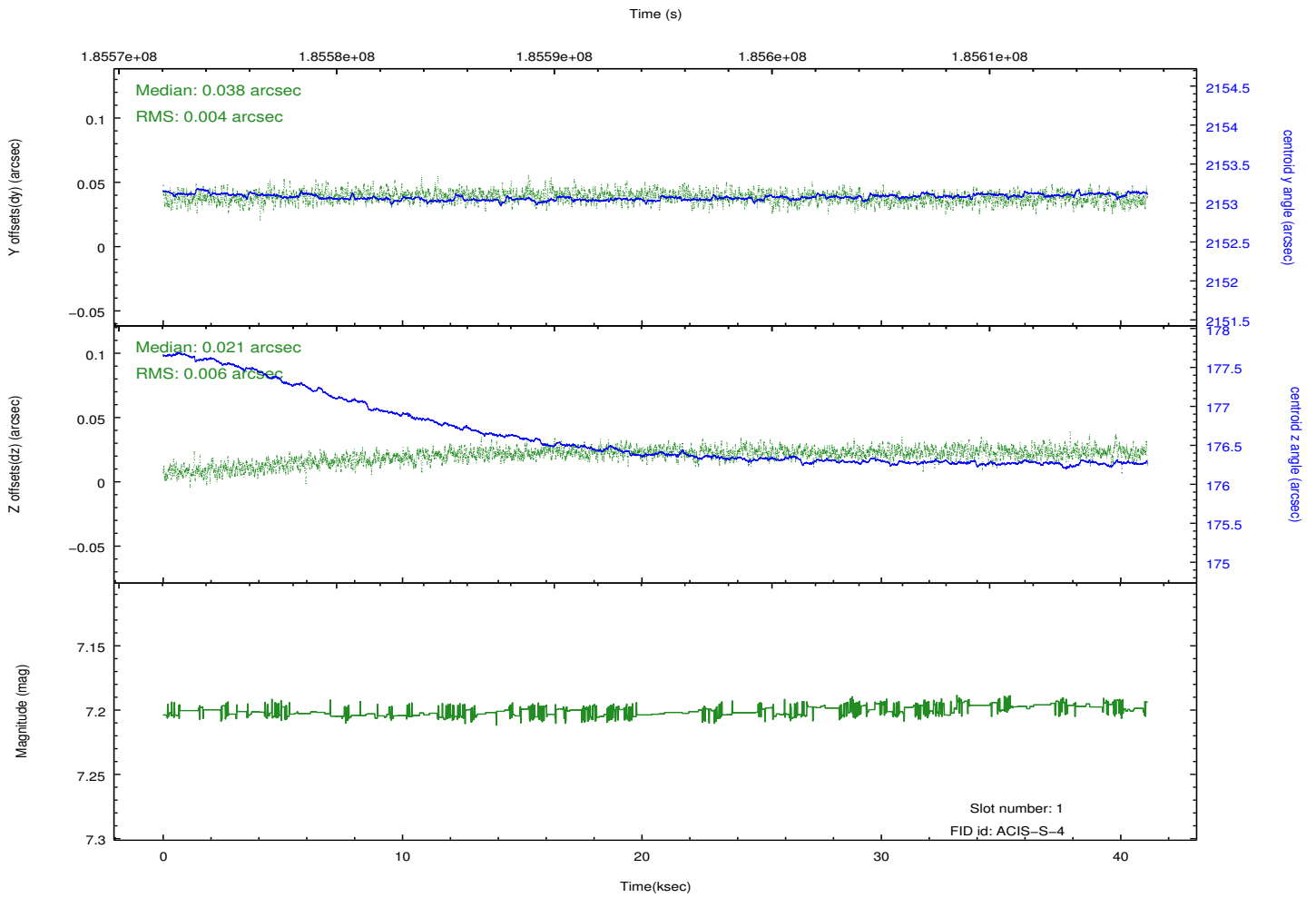
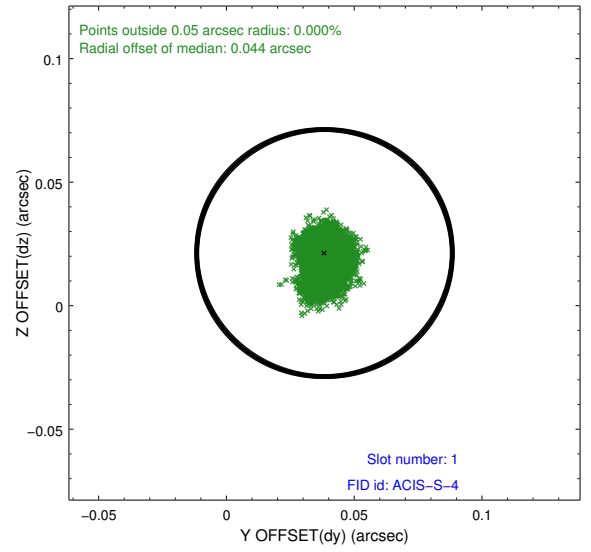
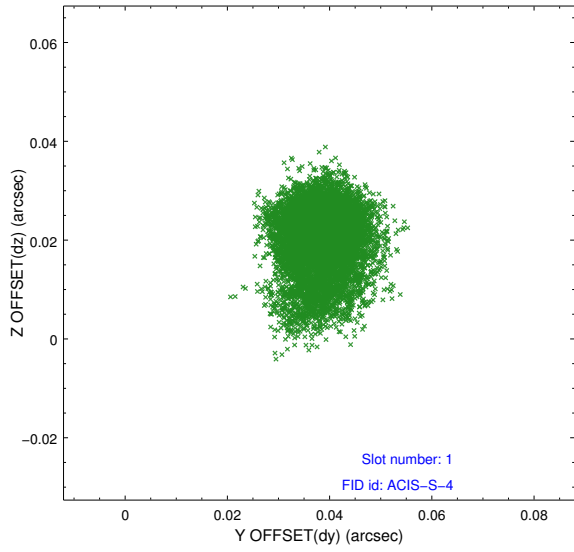


2.5 FID Slots

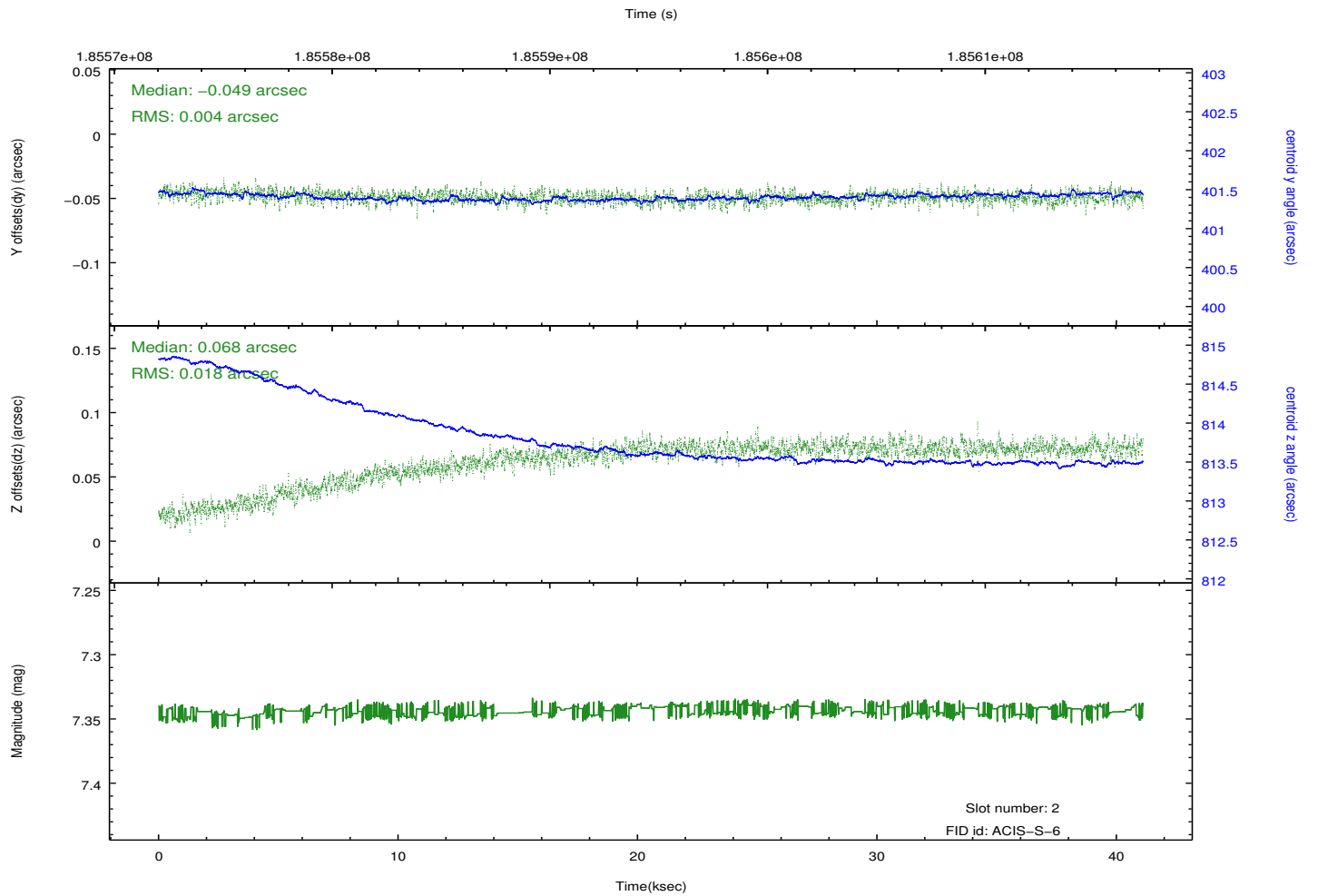
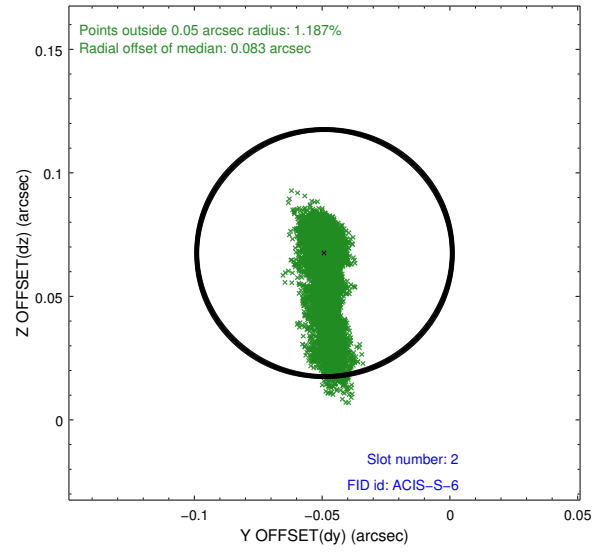
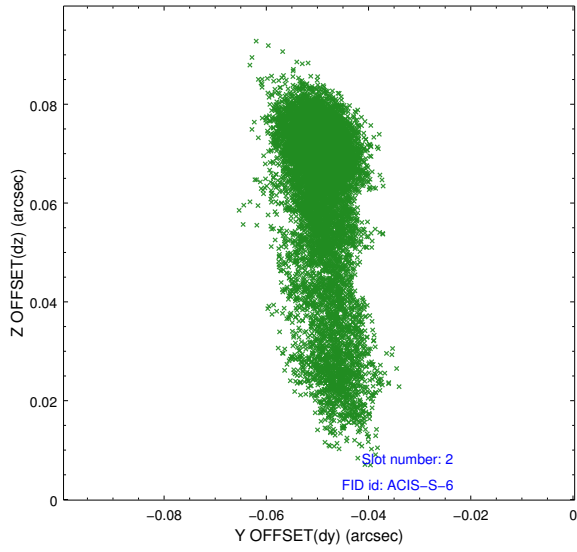
2.5.1 Slot 0



2.5.2 Slot 1



2.5.3 Slot 2



A Summary

A.1 Status

V&V Scientist	Jen Lauer
V&V Date (YYYY-MM-DD)	2012.12.02
V&V Edition	1
V&V Disposition and Status	OK
V&V Charge Time	41.087

A.2 Comments