

V&V Reference Report

L2 ASCDS Version : 8.5.1

Observation 5890 - L2 Version 3
Chandra X-Ray Center

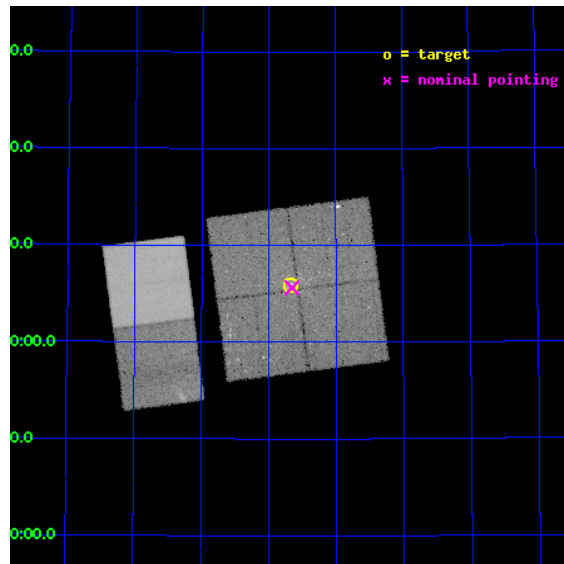
L2 Processing Date : Dec 15 2012

Contents

1	Front	2
2	OBI	3
2.1	OBI	3
2.1.1	Images	3
2.1.2	Bias	3
2.1.3	Parameters	4
2.1.4	Events	4
2.2	Compared Parameters	5
2.3	Aspect	6
2.4	Star Slots	9
2.4.1	Slot 3	9
2.4.2	Slot 4	10
2.4.3	Slot 5	11
2.4.4	Slot 6	12
2.4.5	Slot 7	13
2.5	FID Slots	14
2.5.1	Slot 0	14
2.5.2	Slot 1	15
2.5.3	Slot 2	16
A	Summary	17
A.1	Status	17
A.2	Comments	17

1 Front

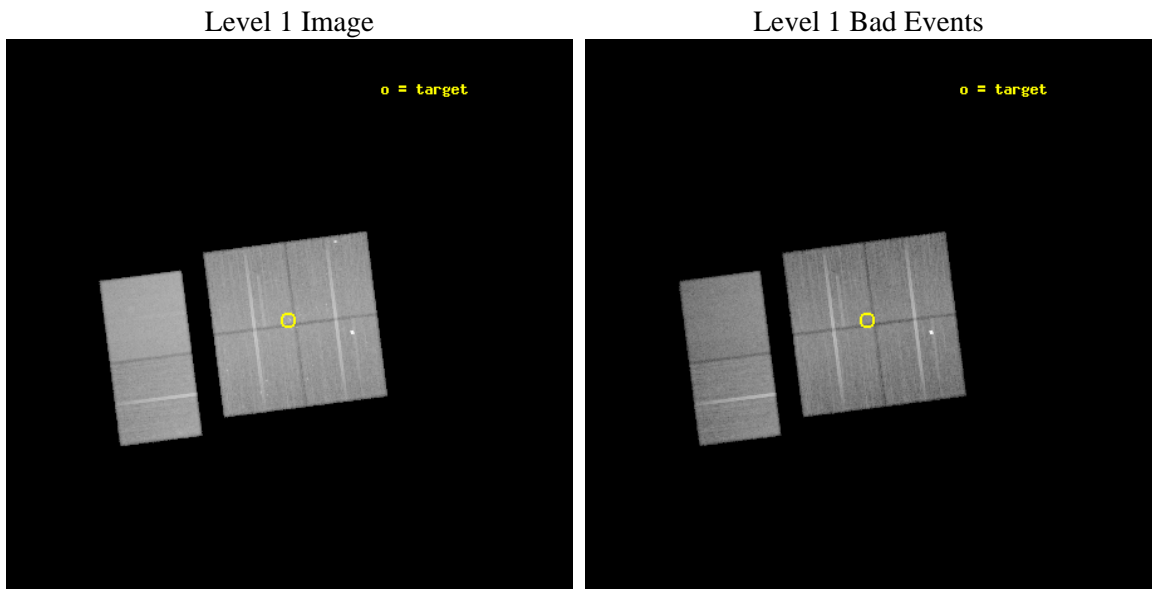
seq_num	900390	Sequence number
obs_id	5890	Observation id
title	Massive Star Life, Death, and Rebirth in the Perseus Arm	Proposal
observer	Dr. Leisa Townsley	Principal investigator
object	W3 Main IRS5	Source name
dtcycle	0	
cycle	P	events from which exps? Prim/Second/Both
ra_targ	36.419167	Observer's specified target RA [deg]
dec_targ	62.097889	Observer's specified target Dec [deg]
ra_nom	36.414189156805	Nominal RA [deg]
dec_nom	62.093858561161	Nominal Dec [deg]
roll_nom	262.67616613448	Nominal Roll [deg]
revision	3	Processing version of data
ontime	40140.717879862	Sum of GTIs [s]
liveltime	39632.431940228	Livetime [s]
ontime0	40147.19985044	Sum of GTIs [s]
ontime1	40140.717840016	Sum of GTIs [s]
ontime2	40147.19985044	Sum of GTIs [s]
ontime3	40140.717879862	Sum of GTIs [s]
ontime6	40147.19985044	Sum of GTIs [s]
ontime7	40147.19985044	Sum of GTIs [s]
l2events	310979	Number of level 2 events



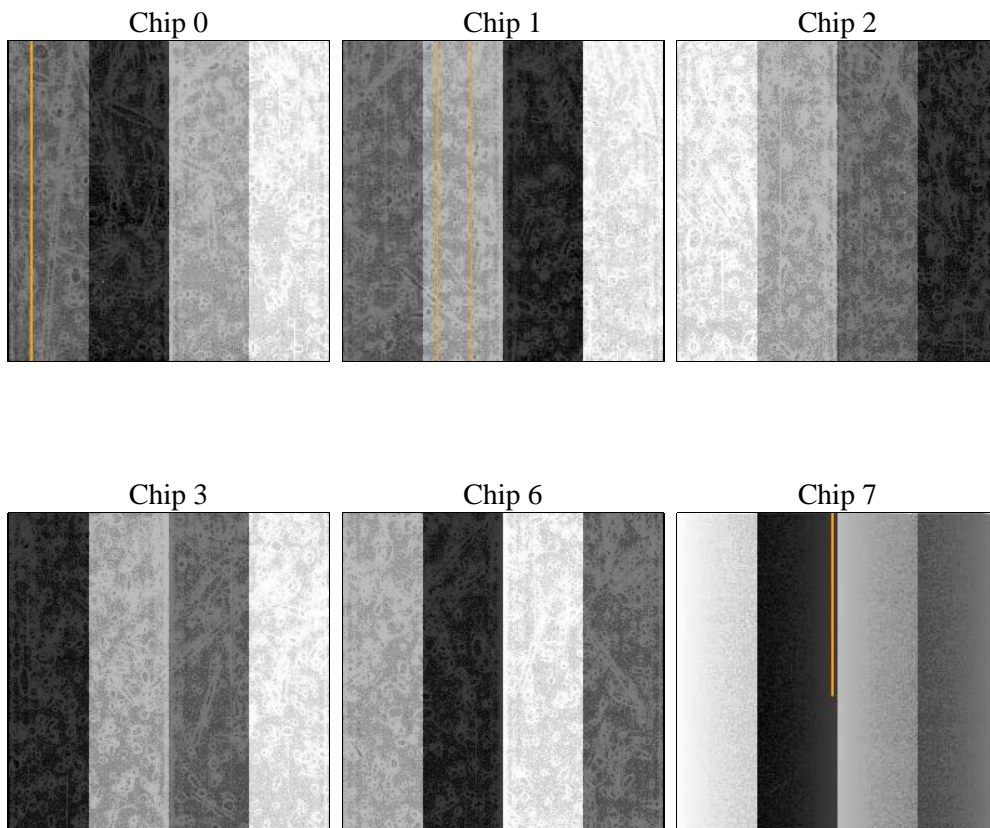
2 OBI

2.1 OBI

2.1.1 Images



2.1.2 Bias



2.1.3 Parameters

obi_num	0	Obi number	sched_exp_time	40000.000000	[s] Scheduled observation exposure time
ascdsver	8.5.1	Processing system revision	ontime	40140.717879862	Sum of GTIs [s]
caldbver	4.5.5	 	ontime0	40147.19985044	Sum of GTIs [s]
date	2012-12-15T22:18:28	Date and time of file creation	ontime1	40140.717840016	Sum of GTIs [s]
revision	3	Processing version of data	ontime2	40147.19985044	Sum of GTIs [s]
			ontime3	40140.717879862	Sum of GTIs [s]
			ontime6	40147.19985044	Sum of GTIs [s]
			ontime7	40147.19985044	Sum of GTIs [s]
			l1events	1723531	Number of level 1 events

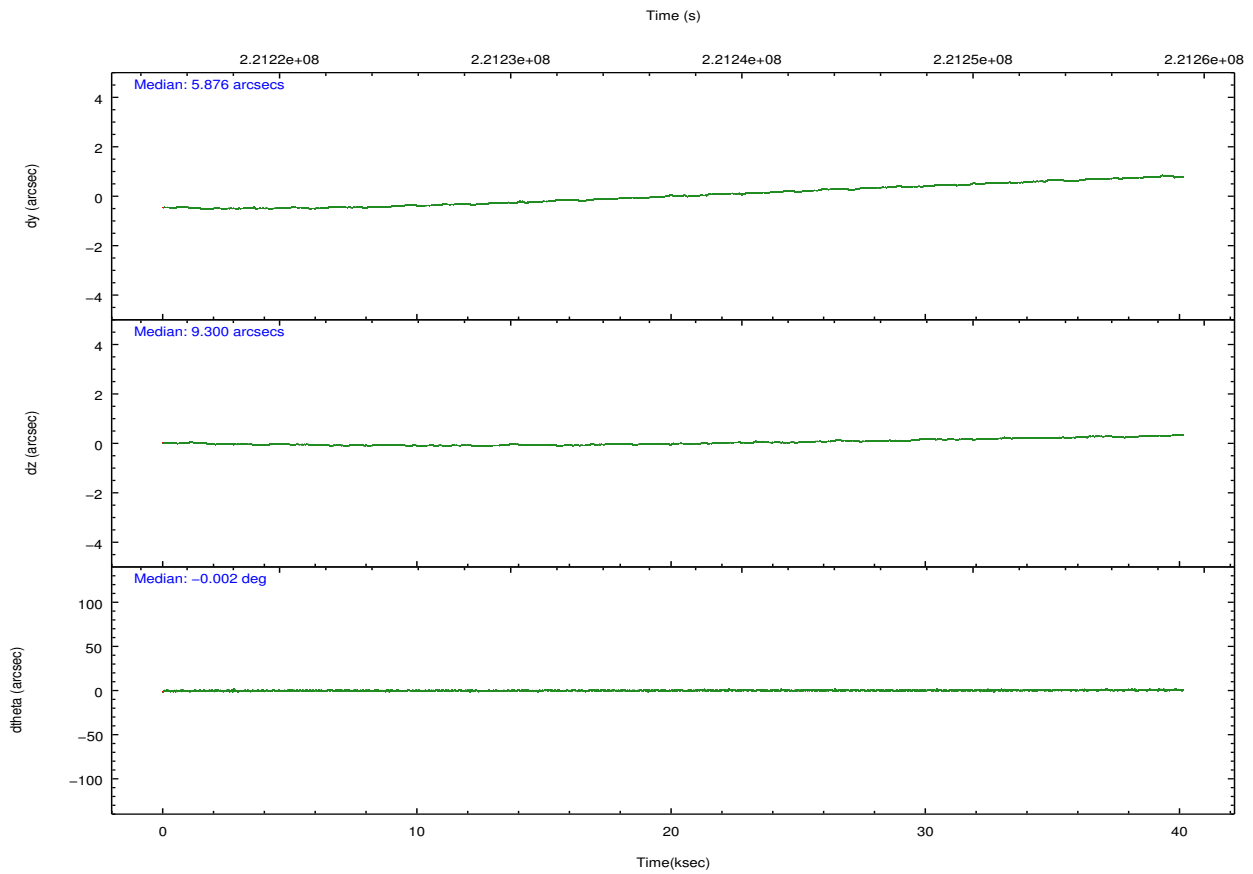
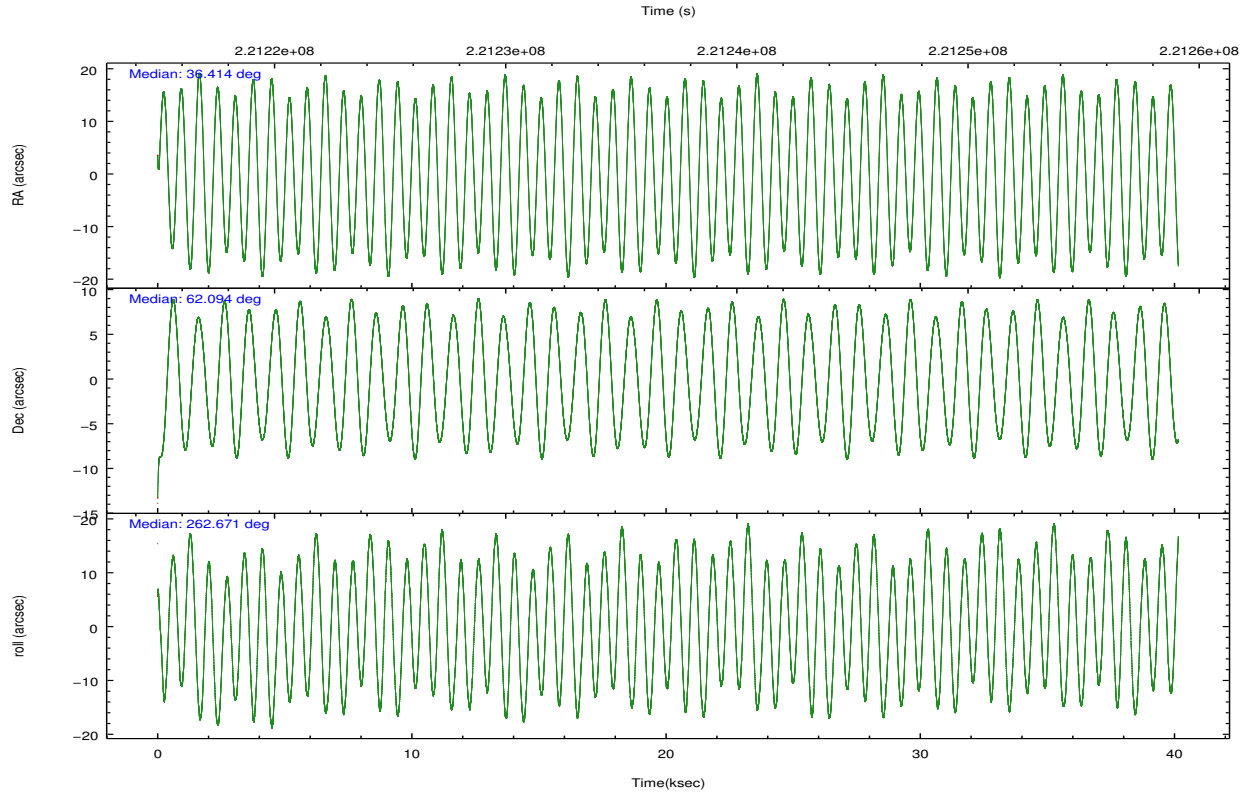
2.1.4 Events

	ccd 0	ccd 1	ccd 2	ccd 3	ccd 6	ccd 7		ccd 0	ccd 1	ccd 2	ccd 3	ccd 6	ccd 7
level 1 events	261518	257029	278751	271608	282640	371985	grade 0 events	15824	17340	18203	17985	14465	13580
rejected events	226127	217170	241497	234411	247676	217982		6%	6%	6%	6%	5%	3%
rejected %	86%	84%	86%	86%	87%	58%	grade 1 events	147	125	168	192	151	351
								0%	0%	0%	0%	0%	0%
							grade 2 events	7328	8412	7309	6837	7248	30641
								2%	3%	2%	2%	2%	8%
							grade 3 events	3343	3605	3283	3263	3264	13689
								1%	1%	1%	1%	1%	3%
							grade 4 events	3125	3594	3176	3406	3310	13591
								1%	1%	1%	1%	1%	3%
							grade 5 events	11316	11647	10892	12096	13162	35411
								4%	4%	3%	4%	4%	9%
							grade 6 events	5912	7078	5451	5869	6839	83233
								2%	2%	1%	2%	2%	22%
							grade 7 events	214523	205228	230269	221960	234201	181489
								82%	79%	82%	81%	82%	48%

2.2 Compared Parameters

Parameter	Planned	Actual	Parameter	Planned	Actual
Instrument	ACIS	ACIS	Obspar format version number	7	7
Detector	ACIS-012367	ACIS-012367	Obspar file type	PREDICTED	ACTUAL
Grating	NONE	NONE	Obspar update status	NONE	UPDATED
Data mode	VFAINT	VFAINT	Number of optional ACIS chips dropped	0	0
Observation mode	POINTING	POINTING	On-chip summing requested	N	N
[deg] Pointing RA	36.391374	36.41418915680524	Subarray requested	NONE	NONE
[deg] Pointing Dec	62.119109	62.09385856116091	Alternating exposures requested	N	N
[deg] Pointing Roll	262.487643	262.6761661344843	[s] Primary exposure time	0.000000	3.2
[mm] SIM focus pos	-0.782348	-0.7809083437167272			
[mm] SIM defocus	0	0.001439871863259334			
[mm] SIM translation stage pos	-233.592463	-233.5874344608287			
[mm] SIM translation stage offset	0	-0.005018542100998502			
[s] Observation start time (MET)	221217100.184000	221215958.53763			
Observation start date	2005-01-04T09:10:36	2005-01-04T08:52:38			
[s] Observation end time (MET)	221257100.184000	221257488.977			
Observation end date	2005-01-04T20:17:16	2005-01-04T20:24:48			
Read mode	TIMED	TIMED			

2.3 Aspect

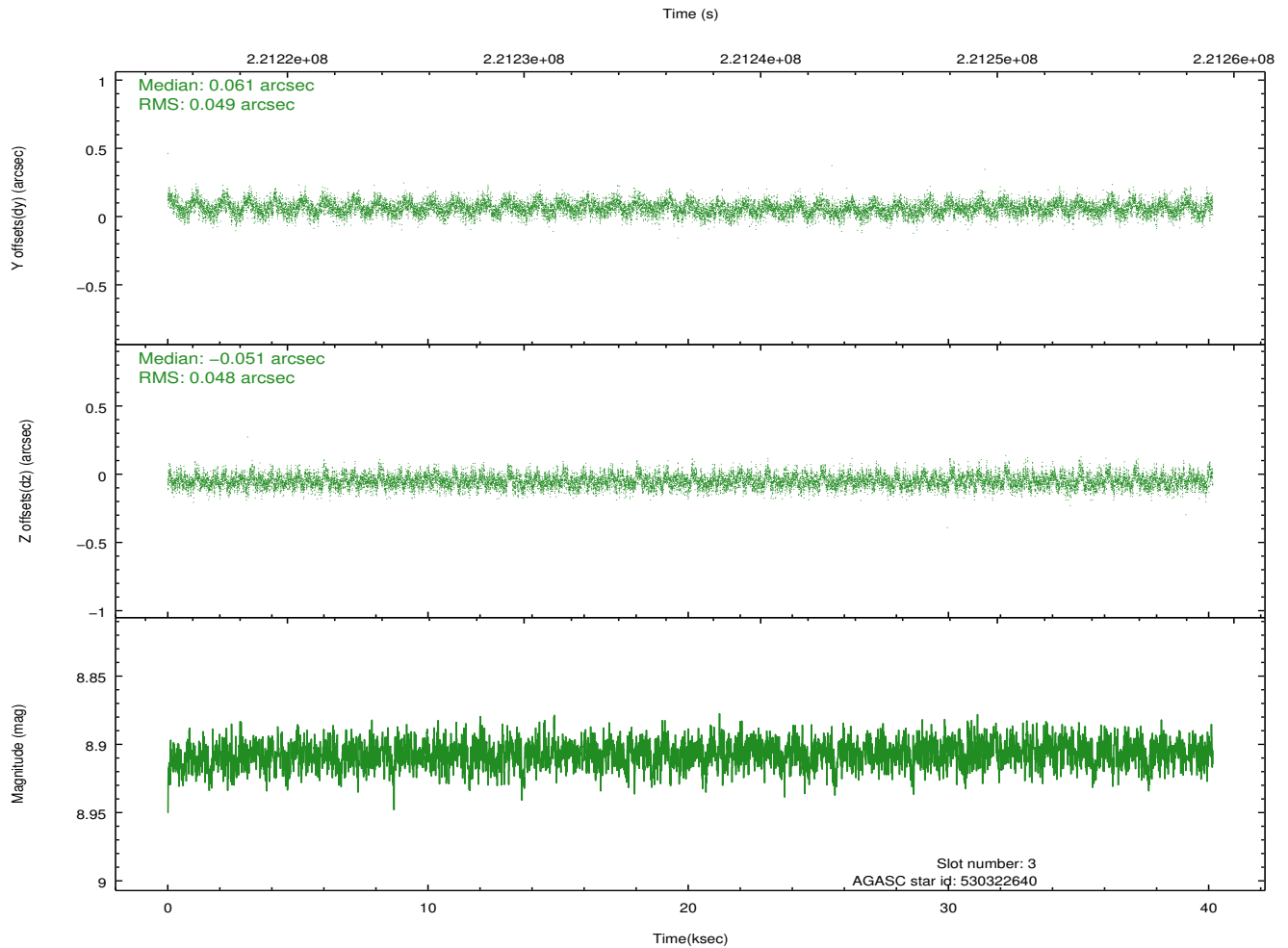
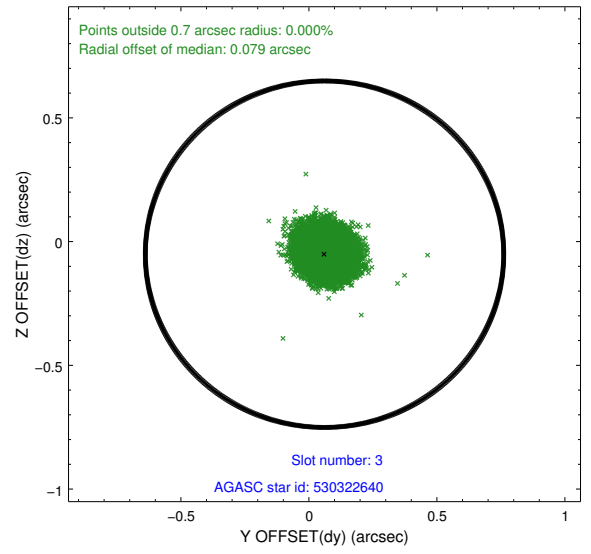
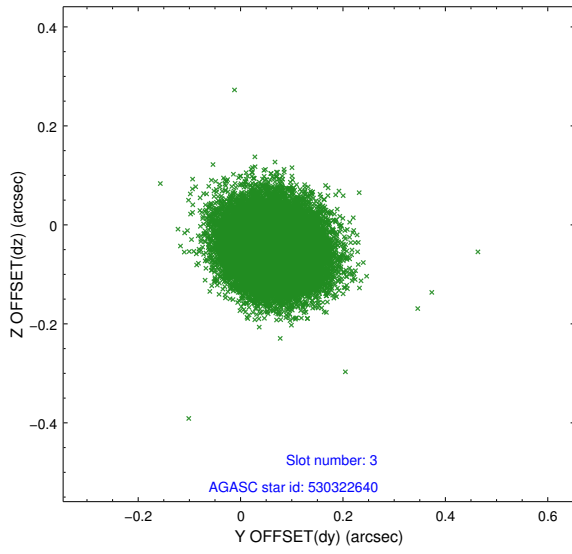


Slot Statistics

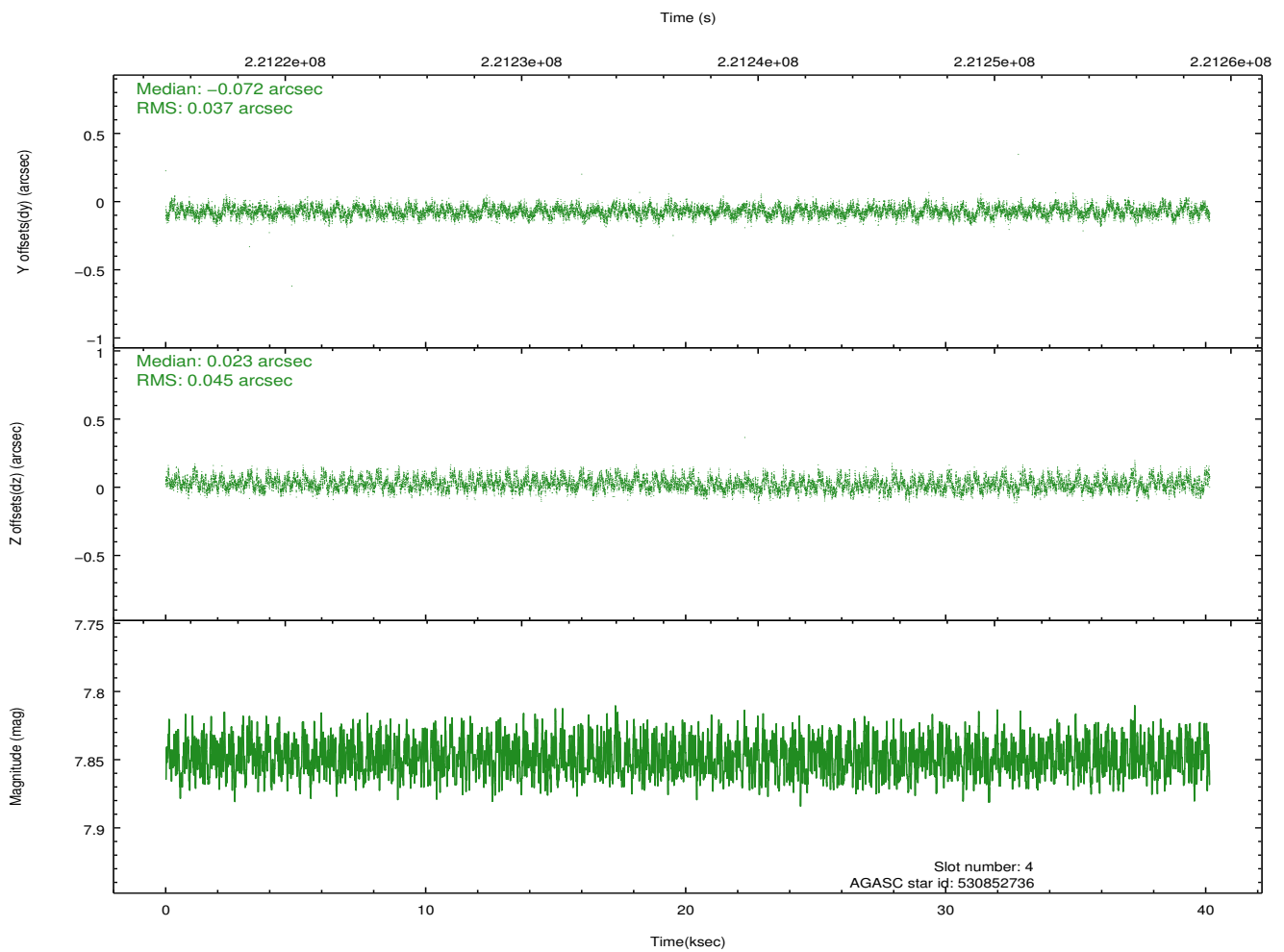
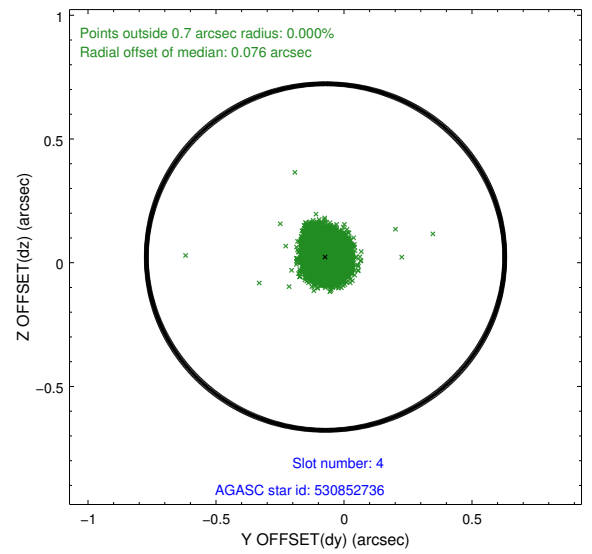
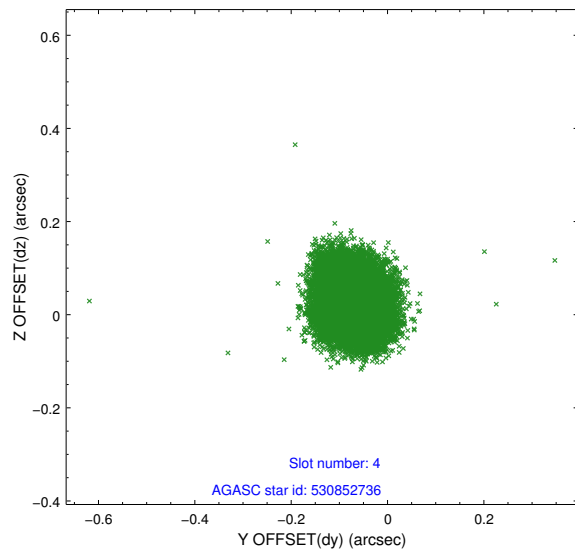
slot	status	id	mag	n_pts	med_dy	med_dz	dr1	dr2	ra	dec	mean_y	mean_z
0	FID	ACIS-I-1	7.24	9794	0.005	0.032	0.014	0.020	0.000000	0.000000	933.80	-832.76
1	FID	ACIS-I-5	7.23	9794	-0.161	0.029	0.017	0.024	0.000000	0.000000	-1814.47	1064.70
2	FID	ACIS-I-6	7.25	9794	0.067	0.009	0.010	0.016	0.000000	0.000000	399.38	1709.21
3	GUIDE	530322640	8.91	19575	0.061	-0.051	0.073	0.117	35.878914	61.773652	1344.21	-702.59
4	GUIDE	530852736	7.85	19584	-0.072	0.023	0.062	0.099	37.086329	62.219010	-515.35	1109.01
5	GUIDE	530859152	9.68	19576	0.031	0.017	0.133	0.204	35.871812	62.508157	-1278.71	-1039.62
6	GUIDE	530862272	8.84	19578	-0.087	0.081	0.069	0.115	36.216069	62.475924	-1235.85	-457.12
7	GUIDE	530862896	8.92	19576	0.071	-0.078	0.078	0.124	35.753276	62.216485	-212.18	-1108.11

2.4 Star Slots

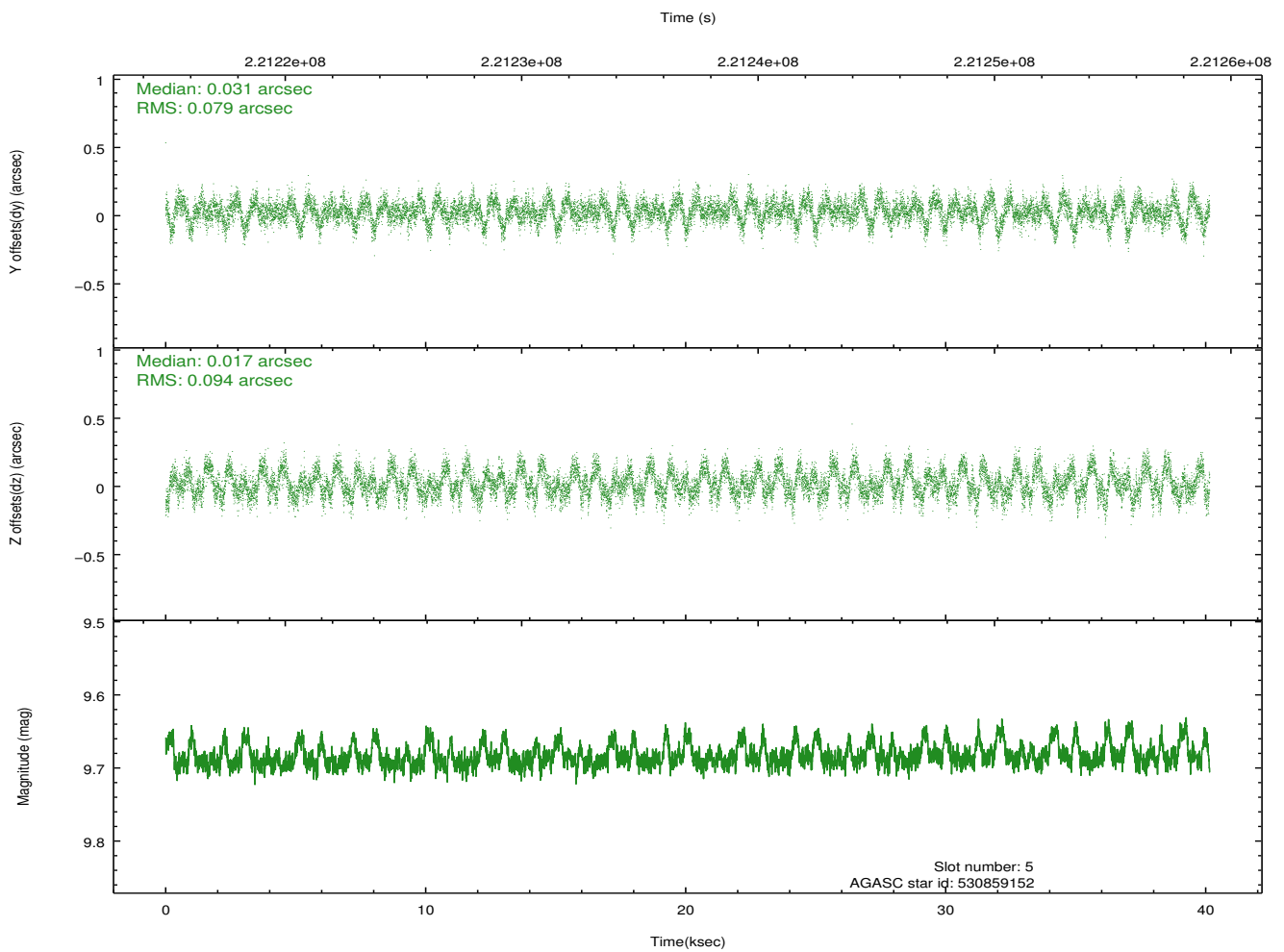
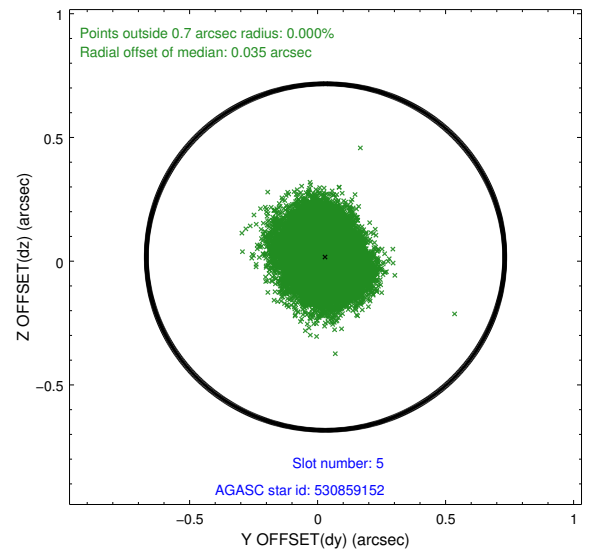
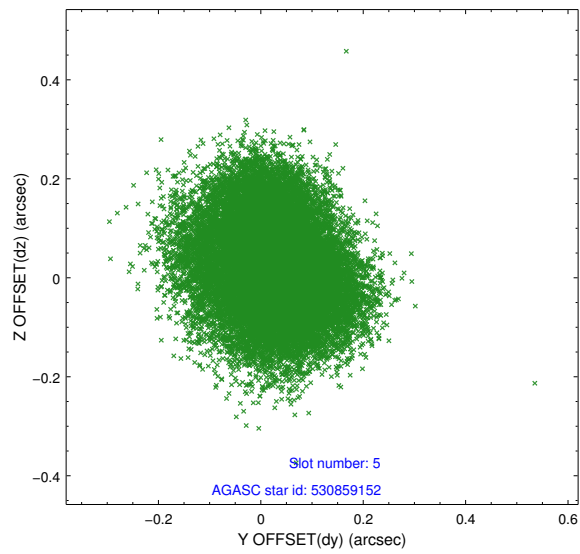
2.4.1 Slot 3



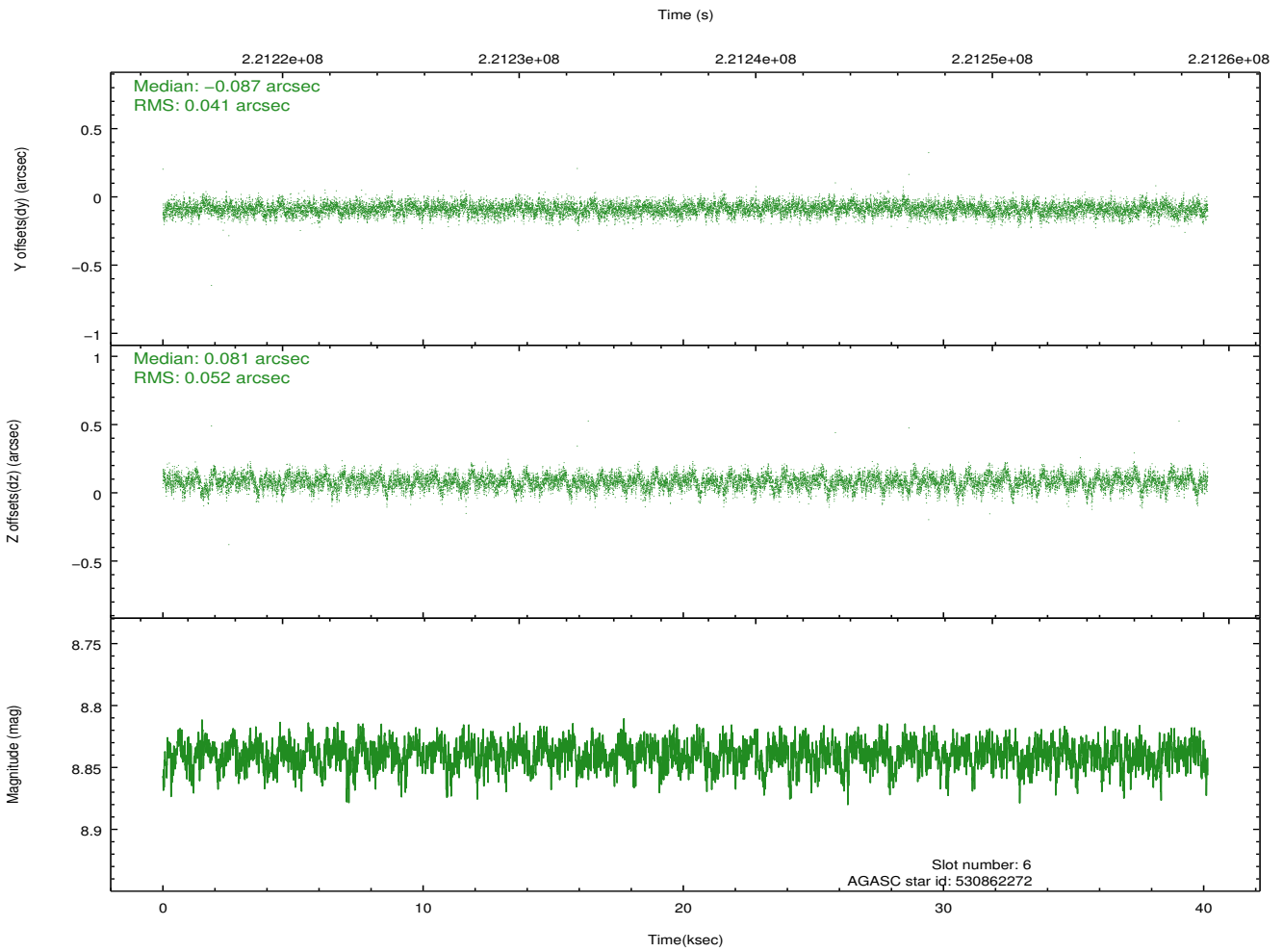
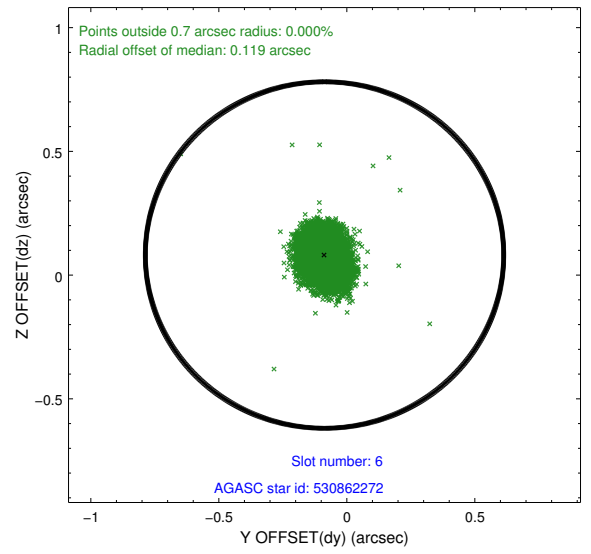
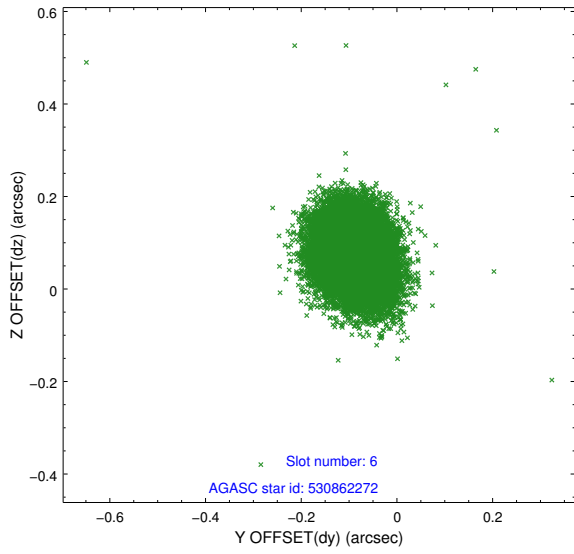
2.4.2 Slot 4



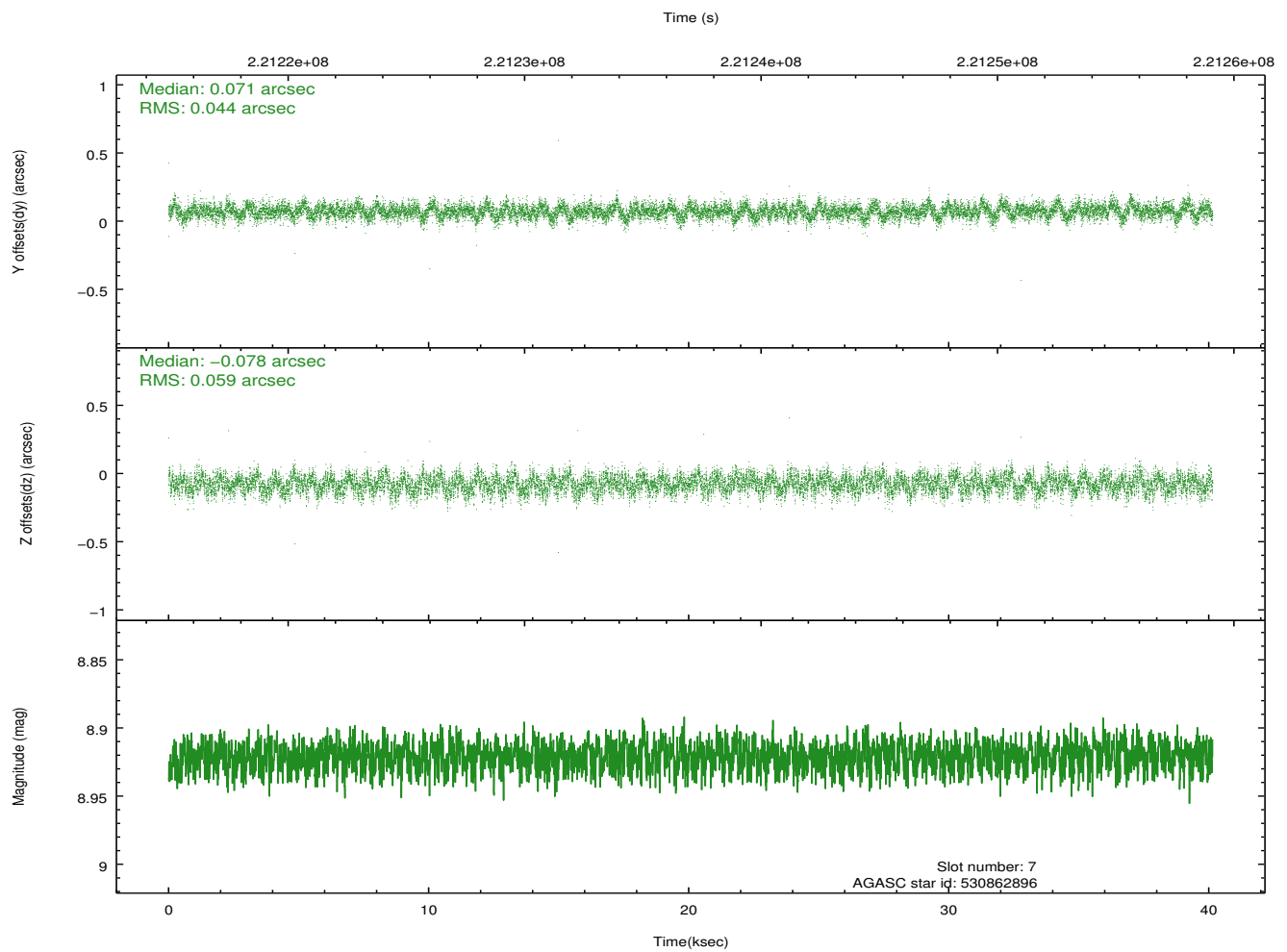
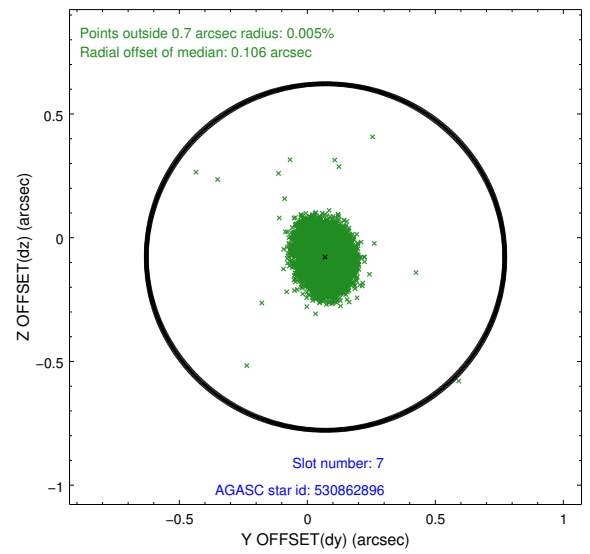
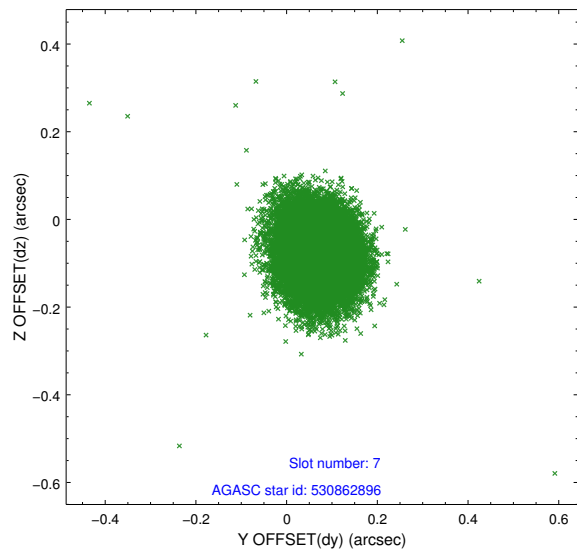
2.4.3 Slot 5



2.4.4 Slot 6

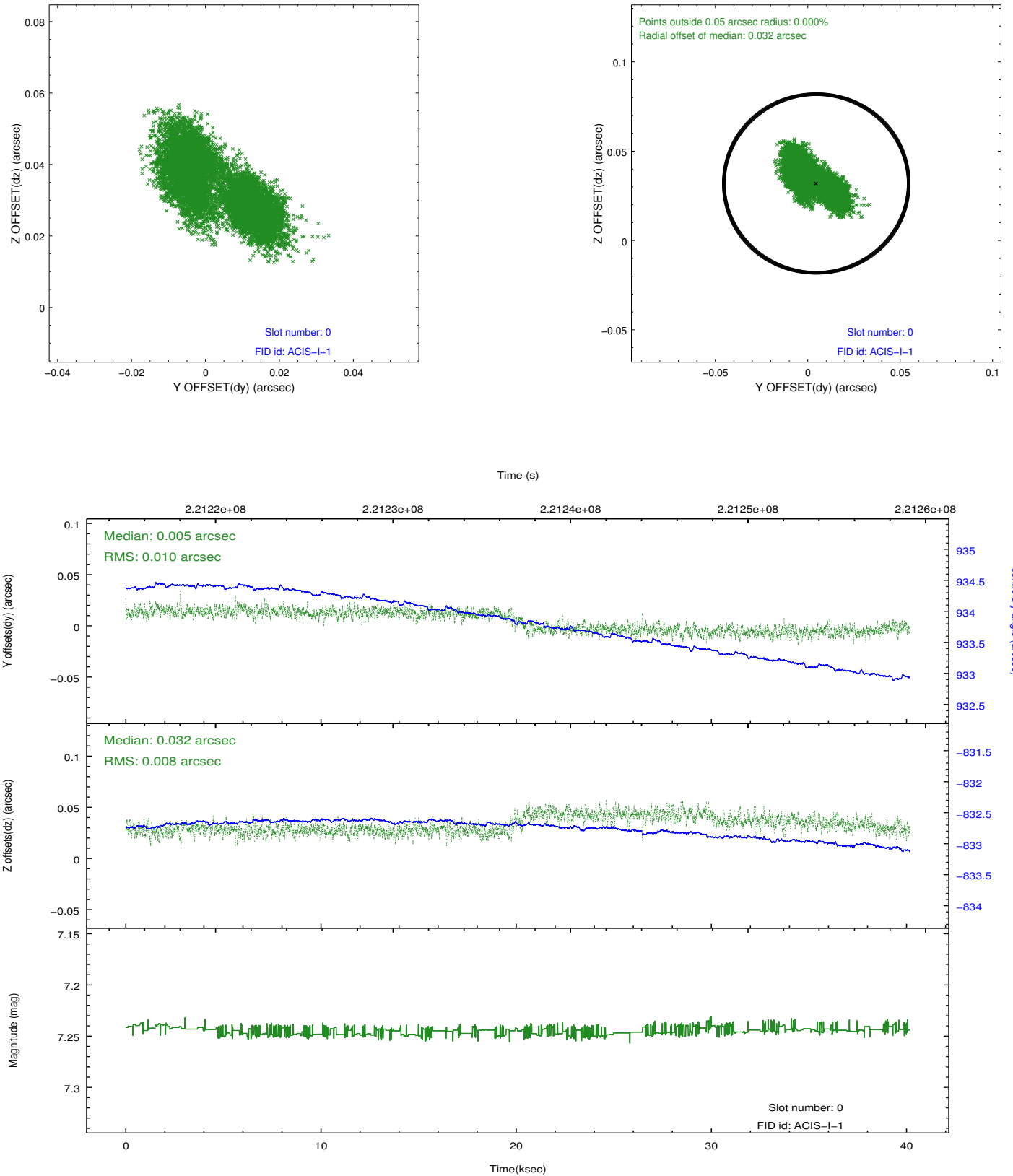


2.4.5 Slot 7

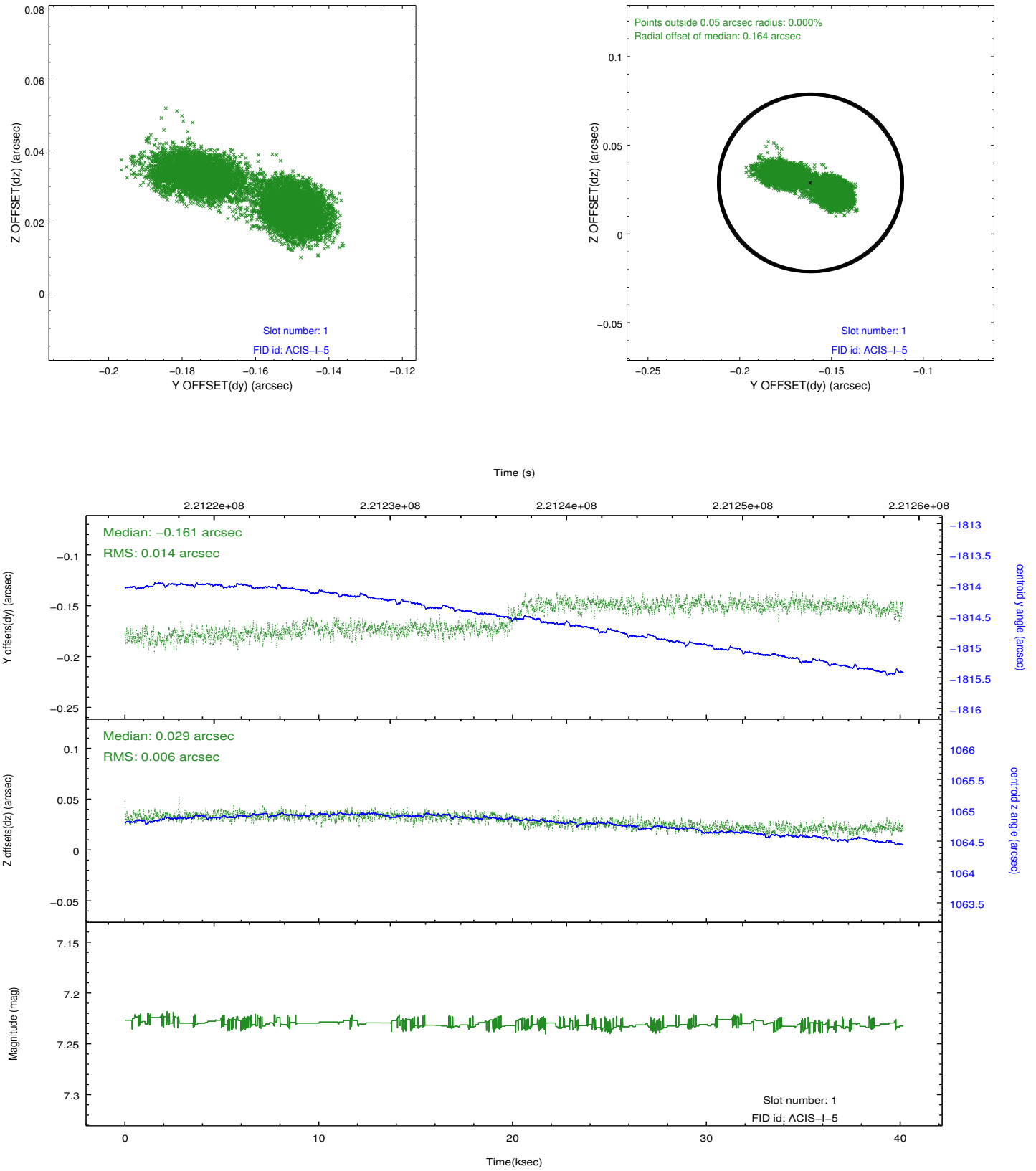


2.5 FID Slots

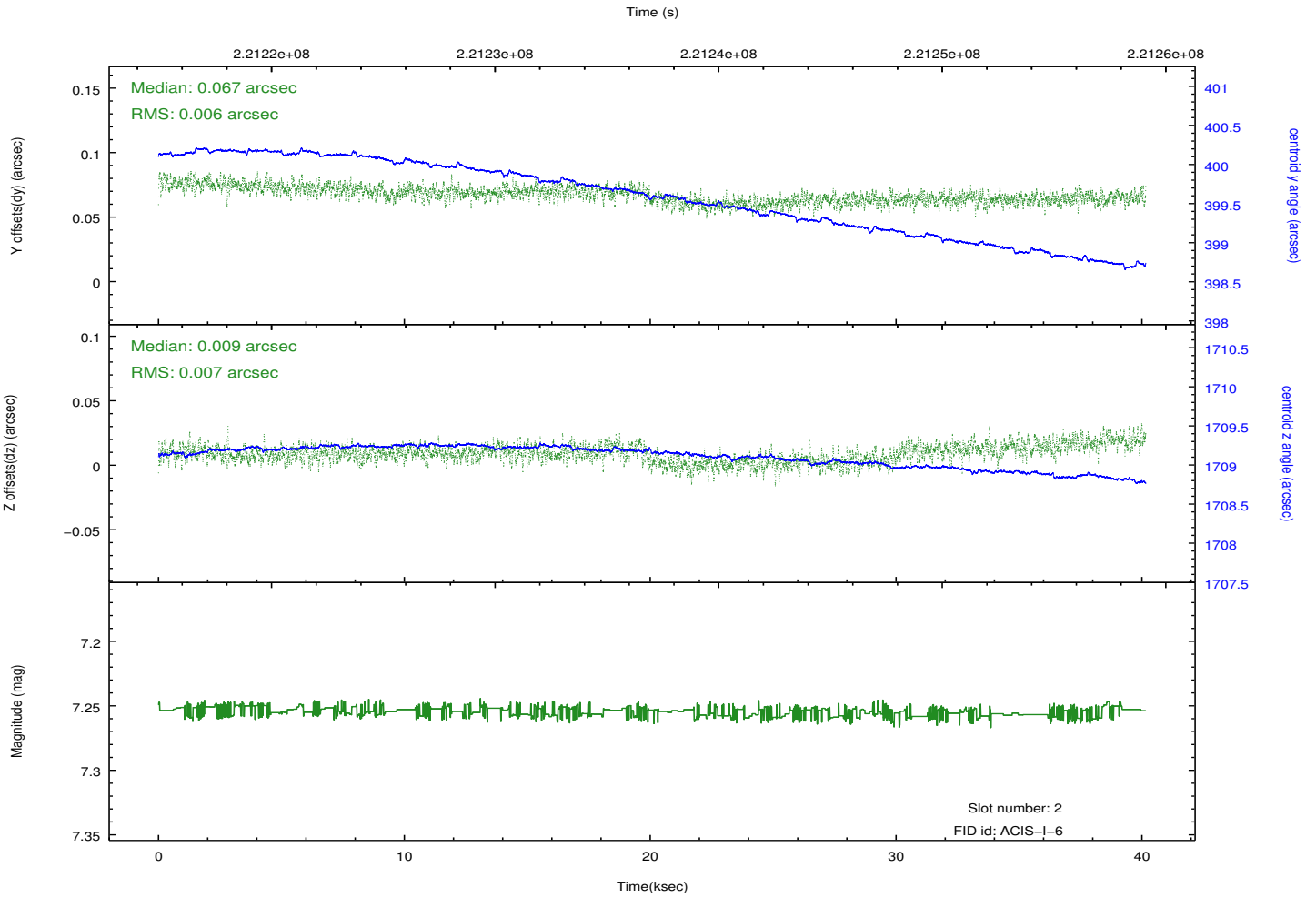
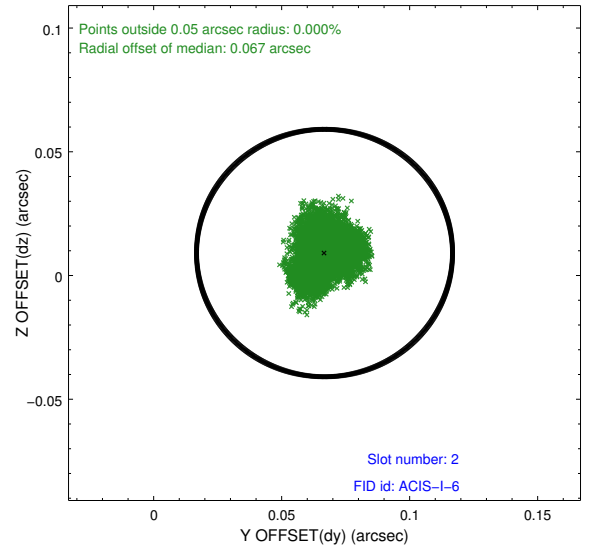
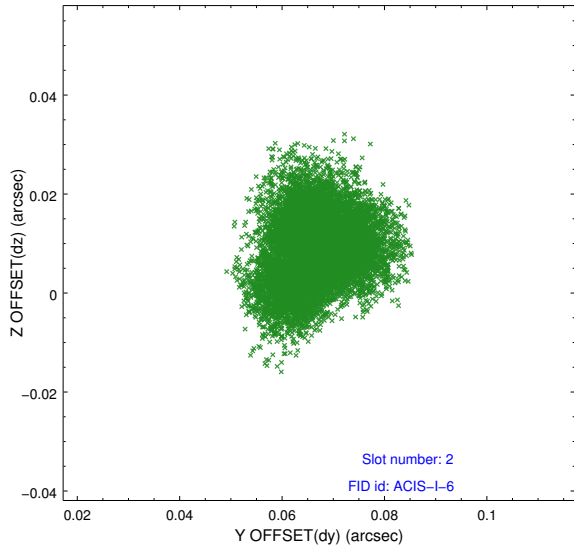
2.5.1 Slot 0



2.5.2 Slot 1



2.5.3 Slot 2



A Summary

A.1 Status

V&V Scientist	Jen Lauer
V&V Date (YYYY-MM-DD)	2013.01.08
V&V Edition	1
V&V Disposition and Status	OK
V&V Charge Time	40.14071

A.2 Comments

Joint Proposal: XMM