

# V&V Reference Report

## L2 ASCDS Version : 7.6.7

Observation 59660 - L2 Version 002  
Chandra X-Ray Center

L2 Processing Date: Mar 3 2006

## Contents

<b>1</b>	<b>Front</b>	<b>2</b>
<b>2</b>	<b>OBI</b>	<b>3</b>
2.1	OBI . . . . .	3
2.1.1	Images . . . . .	3
2.1.2	Bias . . . . .	3
2.1.3	Parameters . . . . .	4
2.1.4	Events . . . . .	4
2.2	Compared Parameters . . . . .	5
2.3	Aspect . . . . .	6
2.4	Star Slots . . . . .	8
2.5	FID Slots . . . . .	8
<b>A</b>	<b>Summary</b>	<b>9</b>
A.1	Status . . . . .	9
A.2	Comments . . . . .	9

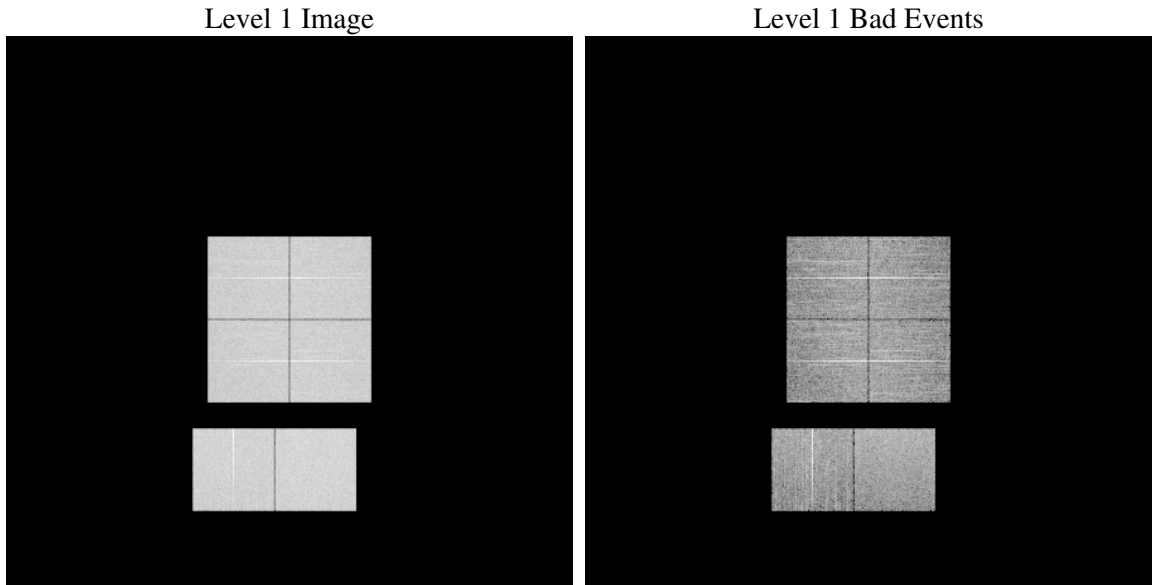
# 1 Front

seq_num	&#160
obs_id	59660
title	ACIS-012367 diagnostics
observer	CHANDRA engineering request/realtime commanding
object	&#160
dtcycle	0
cycle	P
ra_targ	0.0
dec_targ	0.0
ra_nom	222.03841191998
dec_nom	-43.992699347829
roll_nom	341.95596141337
revision	2
ontime	8182.3999695182
livetime	8078.7894942544
ontime0	7705.9762662649
ontime1	7799.9645649195
ontime2	7508.2769368291
ontime3	7683.2895337939
ontime6	7987.9412618279
ontime7	8182.3999695182
l2events	1093492

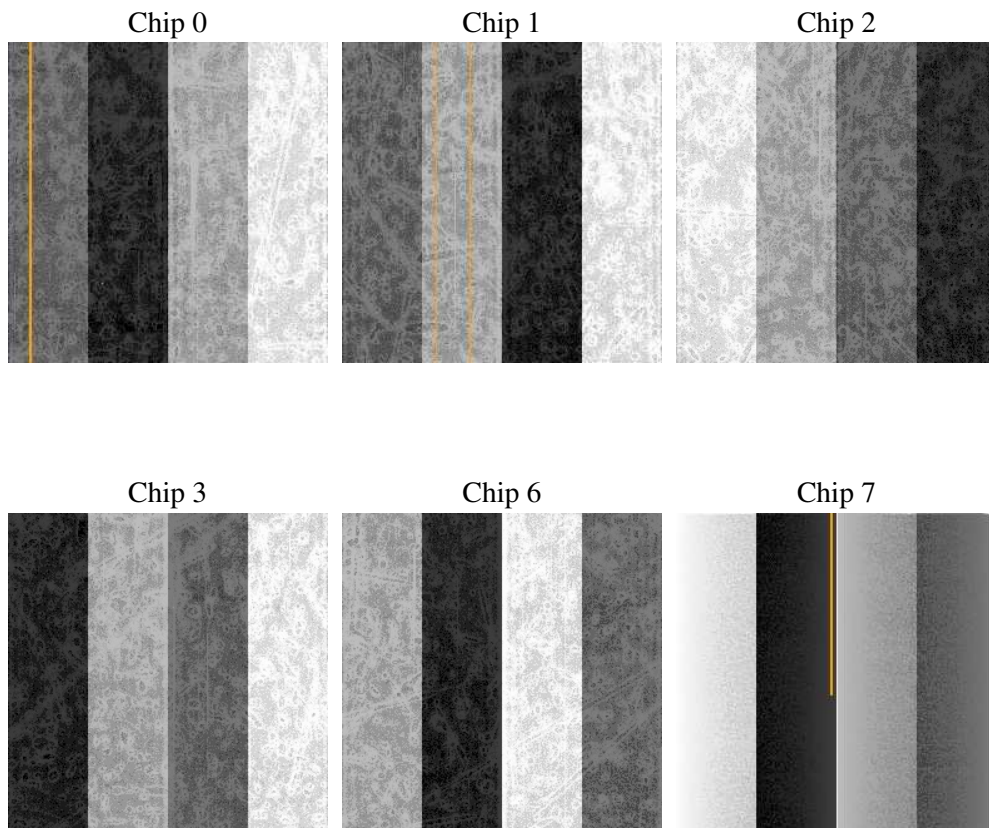
## 2 OBI

### 2.1 OBI

#### 2.1.1 Images



#### 2.1.2 Bias



### 2.1.3 Parameters

obi_num	1
ascdsver	7.6.7
caldbver	3.2.1
date	2006-03-03T16:16:21
revision	2

sched_exp_time	0.0
ontime	8284.0147970021
ontime0	7804.3501134515
ontime1	7891.8564515412
ontime2	7600.1688234508
ontime3	7781.6634008884
ontime6	8089.5560893118
ontime7	8284.0147970021
l1events	1488867

### 2.1.4 Events

	ccd 0	ccd 1	ccd 2	ccd 3	ccd 6	ccd 7
level 1 events	238868	239778	236488	243213	258466	272054
rejected events	54279	53039	55068	57082	57266	62088
rejected %	22%	22%	23%	23%	22%	22%

	ccd 0	ccd 1	ccd 2	ccd 3	ccd 6	ccd 7
grade 0 events	102760	103183	102771	105302	110067	34381
	43%	43%	43%	43%	42%	12%
grade 1 events	571	512	659	632	528	86
	0%	0%	0%	0%	0%	0%
grade 2 events	32830	33571	30947	32208	35354	65595
	13%	14%	13%	13%	13%	24%
grade 3 events	12276	12103	12086	12352	12867	14520
	5%	5%	5%	5%	4%	5%
grade 4 events	11957	12061	11939	12350	12622	14499
	5%	5%	5%	5%	4%	5%
grade 5 events	3272	3336	2945	3358	3539	6883
	1%	1%	1%	1%	1%	2%
grade 6 events	27077	28034	25908	26278	32849	83515
	11%	11%	10%	10%	12%	30%
grade 7 events	48125	46978	49233	50733	50640	52575
	20%	19%	20%	20%	19%	19%

## 2.2 Compared Parameters

Parameter	Planned	Actual	Parameter	Planned	Actual
Instrument	ACIS	ACIS	Obspar format version number	6	6
Detector	ACIS-012367	ACIS-012367	Obspar file type	PREDICTED	ACTUAL
Grating	NONE	NONE	Obspar update status	NONE	UPDATED
Data mode	FAINT	FAINT	On-chip summing requested	N	N
Observation mode	SECONDARY	SECONDARY	Subarray requested	NONE	NONE
Pointing RA	0	222.0384119199839	Alternating exposures requested	N	N
Pointing Dec	0	-43.99269934782932	Primary exposure time	3.2	3.2
Pointing Roll	0.0	341.9559614133743			
SIM focus pos (mm)	-0.782348	-0.6828225247311905			
SIM defocus (mm)	0	0.8505141146731063			
SIM translation stage pos (mm)	-233.592463	250.4635187648994			
SIM translation stage offset (mm)	0	-0.007540371344731511			
Observation start time	232376292.80594	232376291.78093			
Observation start date	2005-05-13T12:58:13	2005-05-13T12:58:11			
Observation end time	232400081.007023	232400079.98201			
Observation end date	2005-05-13T19:34:41	2005-05-13T19:34:39			
Read mode	TIMED	TIMED			

## 2.3 Aspect



**2.4 Star Slots**

**2.5 FID Slots**

# A Summary

## A.1 Status

V&V Scientist	Beth Sundheim
V&V Date (YYYY-MM-DD)	2006.03.03
V&V Edition	1
V&V Disposition and Status	OK
V&V Charge Time	8.18239996

## A.2 Comments