

V&V Reference Report

L2 ASCDS Version : 8.4.5

Observation 61510 - L2 Version 3
Chandra X-Ray Center

L2 Processing Date : Sep 22 2012

Contents

| | | |
|----------|-------------------------------|----------|
| 1 | Front | 2 |
| 2 | OBI | 3 |
| 2.1 | OBI | 3 |
| 2.1.1 | Images | 3 |
| 2.1.2 | Bias | 3 |
| 2.1.3 | Parameters | 4 |
| 2.1.4 | Events | 4 |
| 2.2 | Compared Parameters | 5 |
| 2.3 | Star Slots | 6 |
| 2.4 | FID Slots | 6 |
| A | Summary | 7 |
| A.1 | Status | 7 |
| A.2 | Comments | 7 |

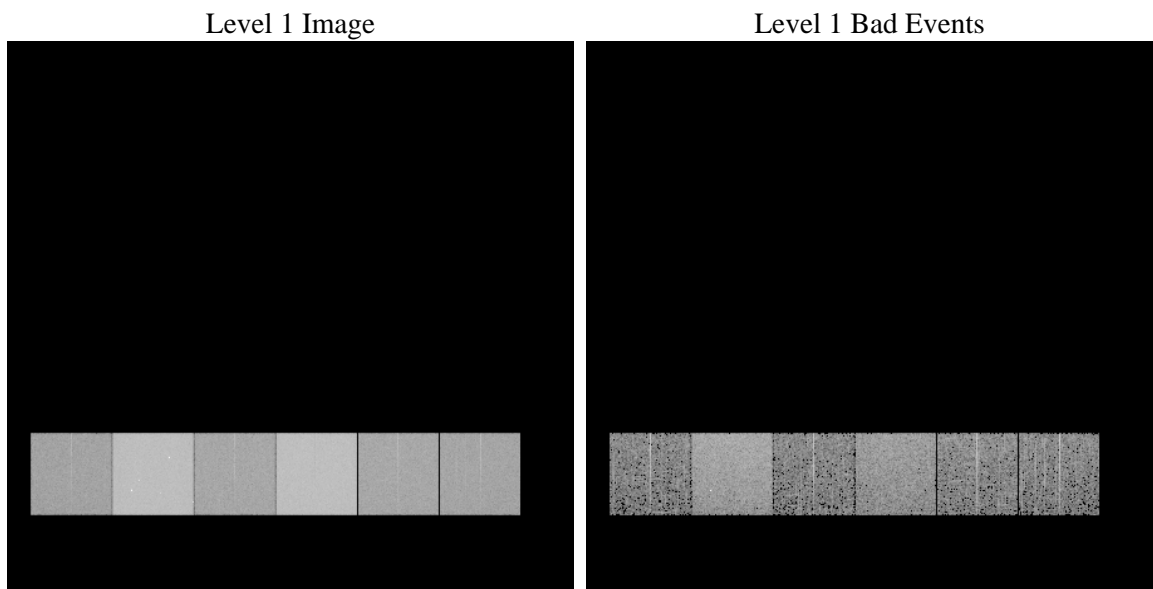
1 Front

| | | |
|----------|---|---|
| seq_num | | Sequence number |
| obs_id | 61510 | Observation id |
| title | ACIS-456789 diagnostics | Proposal title |
| observer | CHANDRA engineering request/realtime commanding | Principal investig |
| object | | Source name |
| dtycle | 0 | |
| cycle | P | events from which exps? Prim/Second/Both |
| ra_targ | 0.0 | Observer's specified target RA [deg] |
| dec_targ | 0.0 | Observer's specified target Dec [deg] |
| ra_nom | 330.02850292673 | Nominal RA [deg] |
| dec_nom | -49.977951461531 | Nominal Dec [deg] |
| roll_nom | 17.572148277388 | Nominal Roll [deg] |
| revision | 3 | Processing version of data |
| ontime | 5667.697007224 | Sum of GTIs [s] |
| livetime | 5595.9292150411 | Livetime [s] |
| ontime4 | 2170.7825163603 | Sum of GTIs [s] |
| ontime5 | 6089.7950045019 | Sum of GTIs [s] |
| ontime6 | 2394.3730862886 | Sum of GTIs [s] |
| ontime7 | 5667.697007224 | Sum of GTIs [s] |
| ontime8 | 2414.5101792365 | Sum of GTIs [s] |
| ontime9 | 2261.3673166484 | Sum of GTIs [s] |
| l2events | 1221856 | Number of level 2 events |

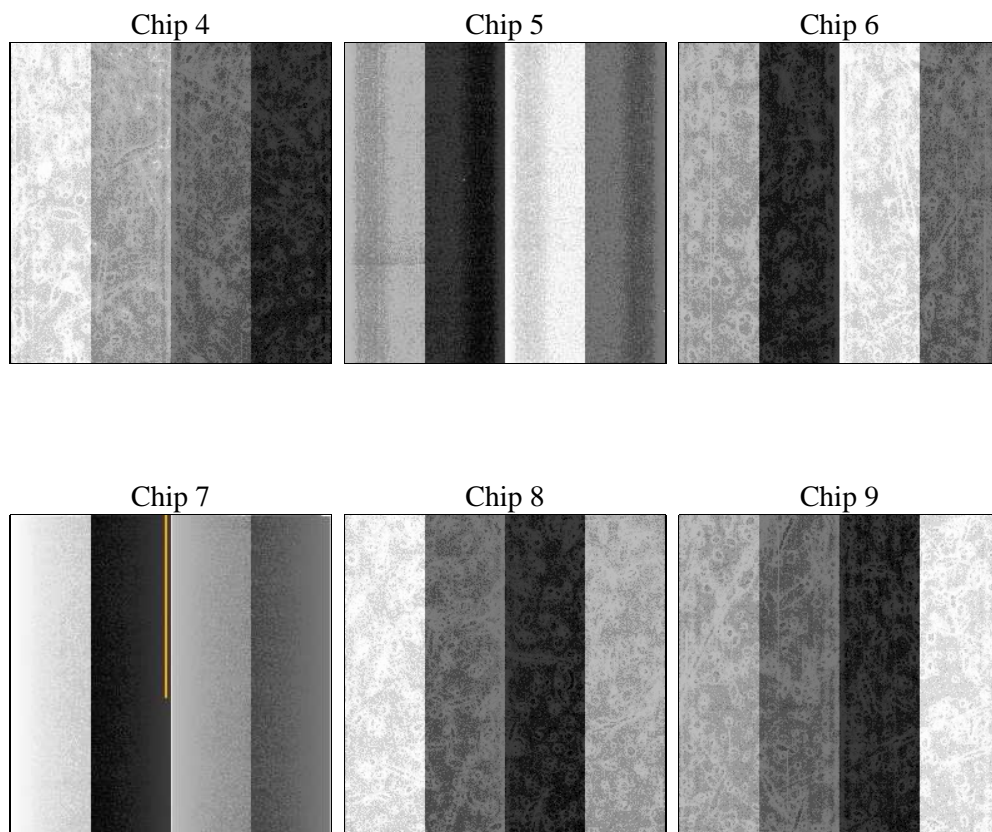
2 OBI

2.1 OBI

2.1.1 Images



2.1.2 Bias



2.1.3 Parameters

| | | | | | |
|----------|---------------------|--------------------------------|----------------|-----------------|---|
| obi_num | 0 | Obi number | sched_exp_time | 0.0 | [s] Scheduled observation exposure time |
| ascdsver | 8.4.5 | Processing system revision | ontime | 5667.697007224 | Sum of GTIs [s] |
| caldbver | 4.5.1.1 | | ontime4 | 2170.7825163603 | Sum of GTIs [s] |
| date | 2012-09-22T06:49:53 | Date and time of file creation | ontime5 | 6089.7950045019 | Sum of GTIs [s] |
| revision | 3 | Processing version of data | ontime6 | 2394.3730862886 | Sum of GTIs [s] |
| | | | ontime7 | 5667.697007224 | Sum of GTIs [s] |
| | | | ontime8 | 2414.5101792365 | Sum of GTIs [s] |
| | | | ontime9 | 2261.3673166484 | Sum of GTIs [s] |
| | | | l1events | 1424716 | Number of level 1 events |

2.1.4 Events

| | ccd 4 | ccd 5 | ccd 6 | ccd 7 | ccd 8 | ccd 9 | | ccd 4 | ccd 5 | ccd 6 | ccd 7 | ccd 8 | ccd 9 |
|-----------------|--------|--------|--------|--------|--------|--------|----------------|-------|--------|-------|--------|-------|-------|
| level 1 events | 146710 | 382594 | 171673 | 390386 | 175014 | 158339 | grade 0 events | 72718 | 87346 | 84009 | 92233 | 85452 | 76321 |
| rejected events | 18078 | 43134 | 18237 | 30134 | 20776 | 19323 | | 49% | 22% | 48% | 23% | 48% | 48% |
| rejected % | 12% | 11% | 10% | 7% | 11% | 12% | grade 1 events | 378 | 367 | 429 | 246 | 394 | 401 |
| | | | | | | | | 0% | 0% | 0% | 0% | 0% | 0% |
| | | | | | | | grade 2 events | 22520 | 116372 | 26531 | 80393 | 27105 | 24499 |
| | | | | | | | | 15% | 30% | 15% | 20% | 15% | 15% |
| | | | | | | | grade 3 events | 7946 | 23338 | 9381 | 36981 | 9784 | 8613 |
| | | | | | | | | 5% | 6% | 5% | 9% | 5% | 5% |
| | | | | | | | grade 4 events | 7966 | 22899 | 9430 | 36889 | 9603 | 8525 |
| | | | | | | | | 5% | 5% | 5% | 9% | 5% | 5% |
| | | | | | | | grade 5 events | 1250 | 8456 | 1420 | 6408 | 1639 | 1378 |
| | | | | | | | | 0% | 2% | 0% | 1% | 0% | 0% |
| | | | | | | | grade 6 events | 17482 | 89680 | 24085 | 113756 | 22492 | 21058 |
| | | | | | | | | 11% | 23% | 14% | 29% | 12% | 13% |
| | | | | | | | grade 7 events | 16450 | 34136 | 16388 | 23480 | 18545 | 17544 |
| | | | | | | | | 11% | 8% | 9% | 6% | 10% | 11% |

2.2 Compared Parameters

| Parameter | Planned | Actual | Parameter | Planned | Actual |
|-----------------------------------|---------------------|----------------------|---------------------------------|-----------|---------|
| Instrument | ACIS | ACIS | Obspar format version number | 7 | 7 |
| Detector | ACIS-456789 | ACIS-456789 | Obspar file type | PREDICTED | ACTUAL |
| Grating | NONE | NONE | Obspar update status | NONE | UPDATED |
| Data mode | FAINT | FAINT | On-chip summing requested | N | N |
| Observation mode | SECONDARY | SECONDARY | Subarray requested | NONE | NONE |
| [deg] Pointing RA | 0 | 330.0285029267325 | Alternating exposures requested | N | N |
| [deg] Pointing Dec | 0 | -49.97795146153083 | [s] Primary exposure time | 0.000000 | 3.2 |
| [deg] Pointing Roll | 0.0 | 17.57214827738813 | | | |
| [mm] SIM focus pos | -0.684267 | -0.6828225247311905 | | | |
| [mm] SIM defocus | 0 | 0.8505141146731063 | | | |
| [mm] SIM translation stage pos | -190.132523 | 250.466033080201 | | | |
| [mm] SIM translation stage offset | 0 | -0.01005468664627074 | | | |
| [s] Observation start time (MET) | 113764488.797 | 113764488.02872 | | | |
| Observation start date | 2001-08-09T17:14:49 | 2001-08-09T17:14:48 | | | |
| [s] Observation end time (MET) | 113777278.748 | 113777277.97922 | | | |
| Observation end date | 2001-08-09T20:47:59 | 2001-08-09T20:47:57 | | | |
| Read mode | TIMED | TIMED | | | |

2.3 Star Slots

2.4 FID Slots

A Summary

A.1 Status

| | |
|----------------------------|----------------|
| V&V Scientist | Jen Lauer |
| V&V Date (YYYY-MM-DD) | 2012.09.25 |
| V&V Edition | 1 |
| V&V Disposition and Status | OK |
| V&V Charge Time | 5.667697007224 |

A.2 Comments