

# V&V Reference Report

## L2 ASCDS Version : 8.4.5

Observation 630 - L2 Version 4  
Chandra X-Ray Center

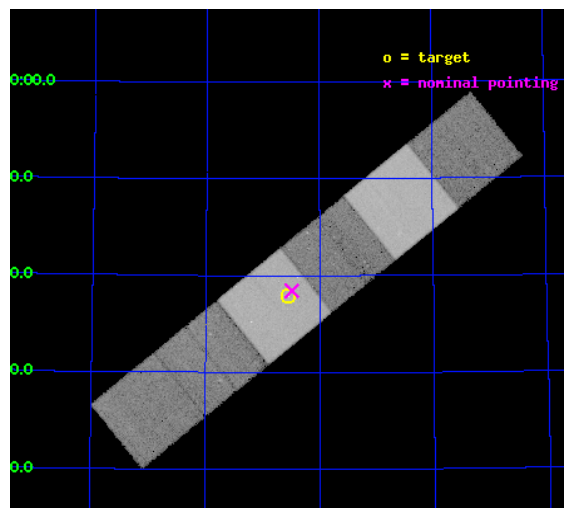
L2 Processing Date : Aug 27 2012

## Contents

<b>1</b>	<b>Front</b>	<b>2</b>
<b>2</b>	<b>OBI</b>	<b>3</b>
2.1	OBI . . . . .	3
2.1.1	Images . . . . .	3
2.1.2	Bias . . . . .	3
2.1.3	Parameters . . . . .	4
2.1.4	Events . . . . .	4
2.2	Compared Parameters . . . . .	5
2.3	Aspect . . . . .	6
2.4	Star Slots . . . . .	9
2.4.1	Slot 3 . . . . .	9
2.4.2	Slot 4 . . . . .	10
2.4.3	Slot 5 . . . . .	11
2.4.4	Slot 6 . . . . .	12
2.4.5	Slot 7 . . . . .	13
2.5	FID Slots . . . . .	14
2.5.1	Slot 0 . . . . .	14
2.5.2	Slot 1 . . . . .	15
2.5.3	Slot 2 . . . . .	16
<b>A</b>	<b>Summary</b>	<b>17</b>
A.1	Status . . . . .	17
A.2	Comments . . . . .	17

# 1 Front

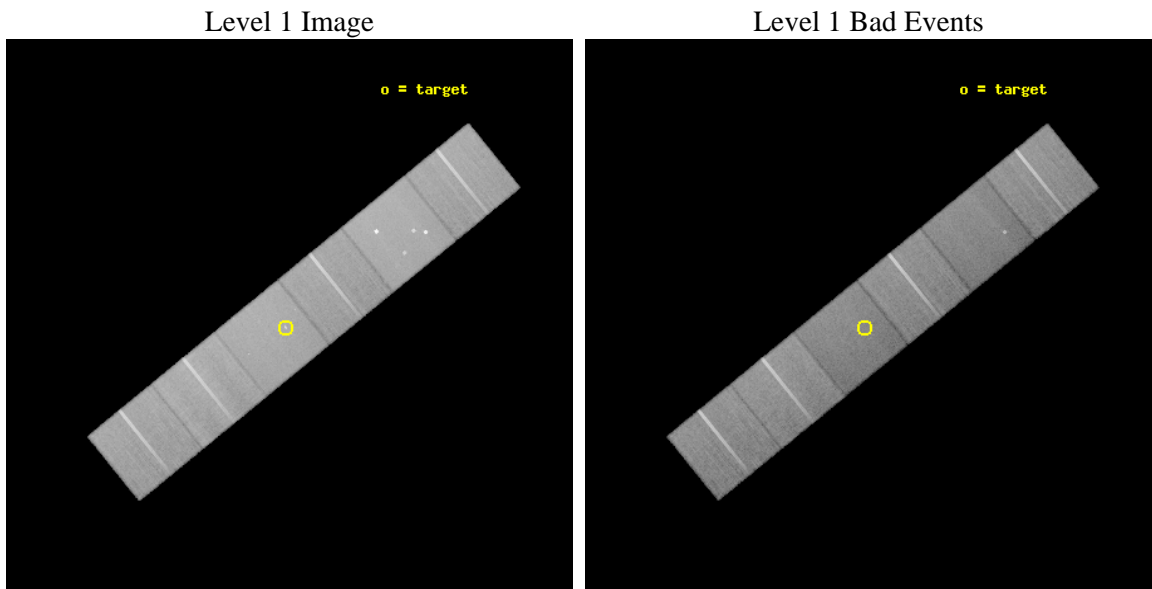
seq_num	200055	Sequence number
obs_id	630	Observation id
title	SHOCKED STELLAR WINDS IN PLANETARY NEBULAE	Proposal title
observer	Prof. You-Hua Chu	Principal investigator
object	NGC 6543	Source name
dtycycle	0	&#160
cycle	P	events from which exps? Prim/Second/Both
ra_targ	269.63875	Observer's specified target RA [deg]
dec_targ	66.633111	Observer's specified target Dec [deg]
ra_nom	269.62243461843	Nominal RA [deg]
dec_nom	66.640750961747	Nominal Dec [deg]
roll_nom	140.8461724303	Nominal Roll [deg]
revision	4	Processing version of data
ontime	46649.600043431	Sum of GTIs [s]
livetime	46058.894718664	Livetime [s]
ontime4	46646.359083191	Sum of GTIs [s]
ontime5	46649.600043431	Sum of GTIs [s]
ontime6	46643.118093029	Sum of GTIs [s]
ontime7	46649.600043431	Sum of GTIs [s]
ontime8	46639.877102897	Sum of GTIs [s]
ontime9	46646.359083205	Sum of GTIs [s]
l2events	464855	Number of level 2 events



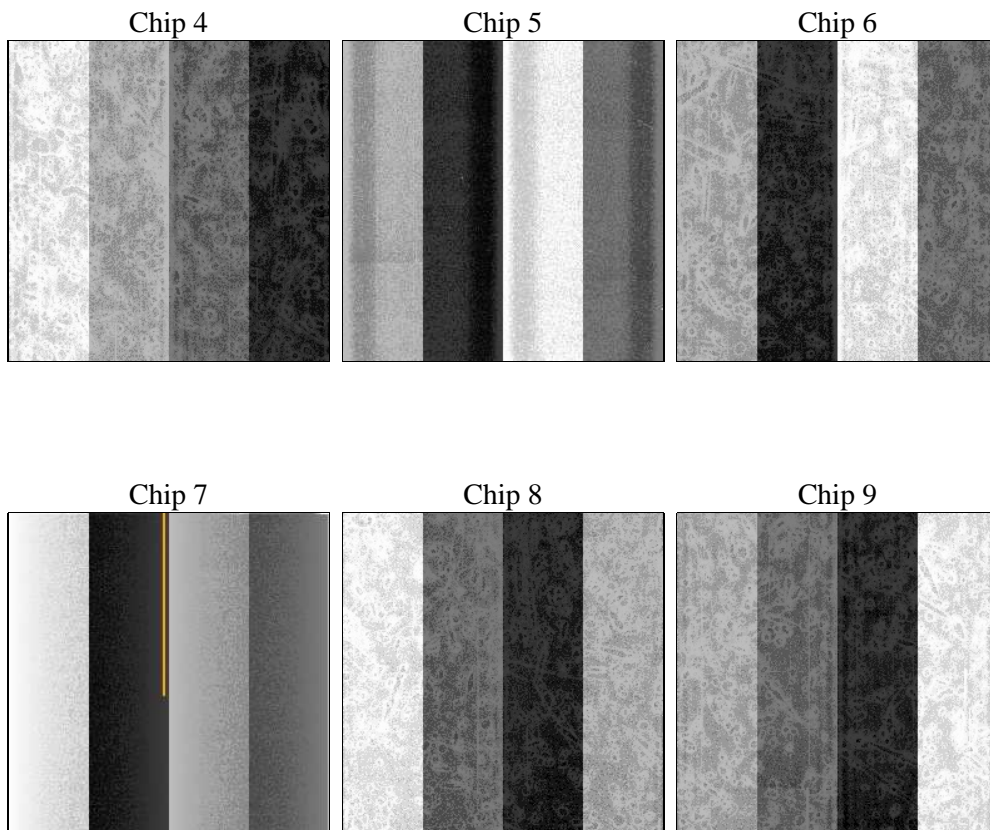
## 2 OBI

### 2.1 OBI

#### 2.1.1 Images



#### 2.1.2 Bias



### 2.1.3 Parameters

obi_num	0	Obi number	sched_exp_time	46500.000000	[s] Scheduled observation exposure time
ascdsver	8.4.5	Processing system revision	ontime	46649.600043431	Sum of GTIs [s]
caldbver	4.5.1.1	&#160	ontime4	46646.359083191	Sum of GTIs [s]
date	2012-08-27T20:09:29	Date and time of file creation	ontime5	46649.600043431	Sum of GTIs [s]
revision	4	Processing version of data	ontime6	46643.118093029	Sum of GTIs [s]
			ontime7	46649.600043431	Sum of GTIs [s]
			ontime8	46639.877102897	Sum of GTIs [s]
			ontime9	46646.359083205	Sum of GTIs [s]
			l1events	2241096	Number of level 1 events

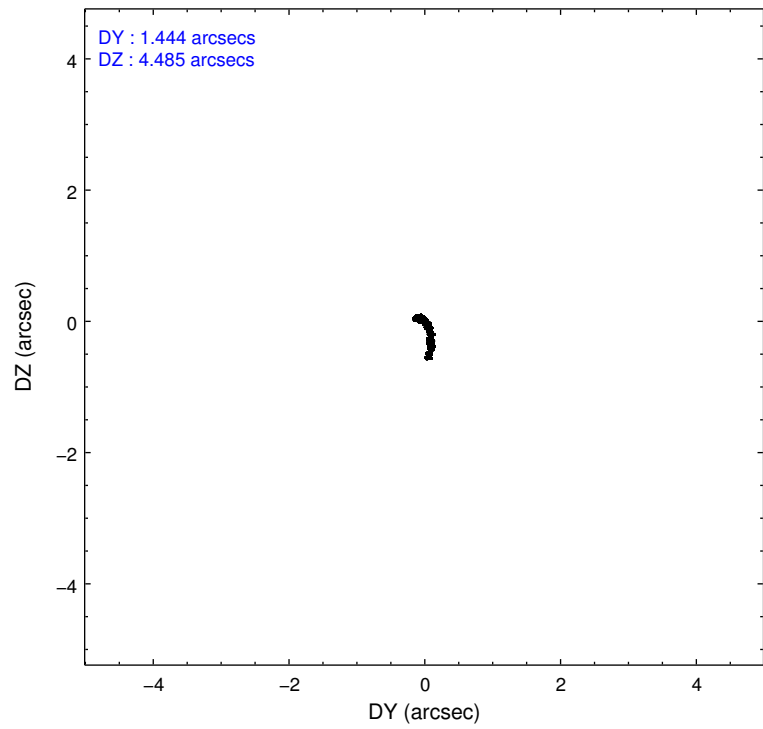
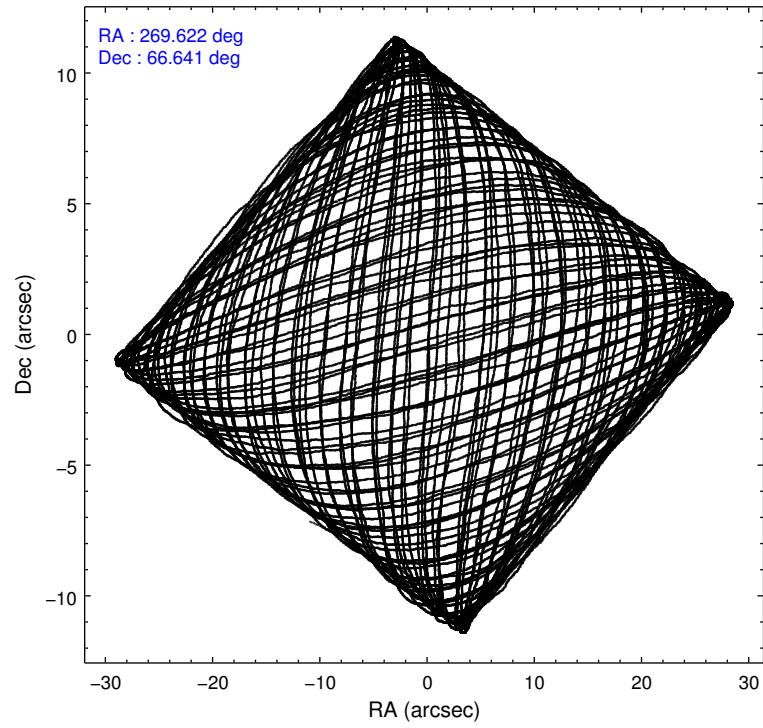
### 2.1.4 Events

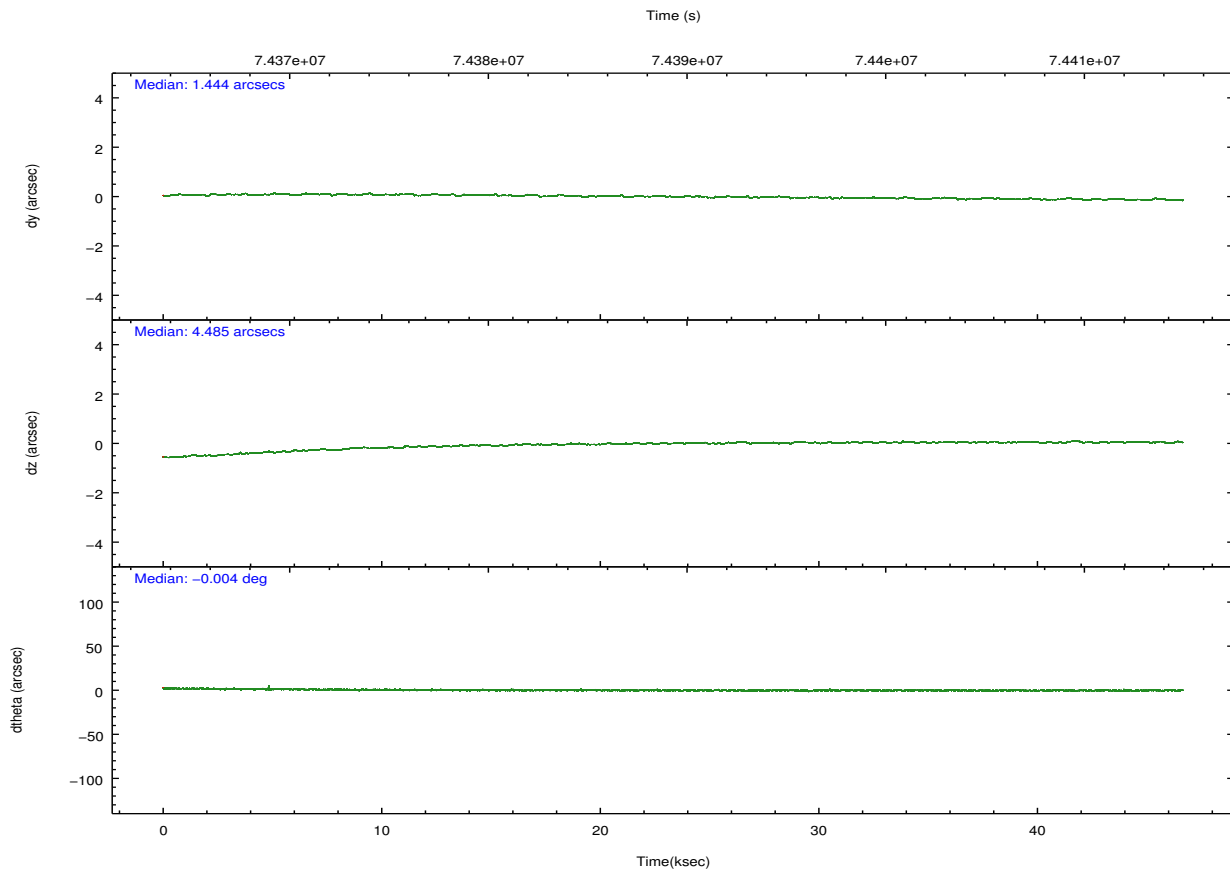
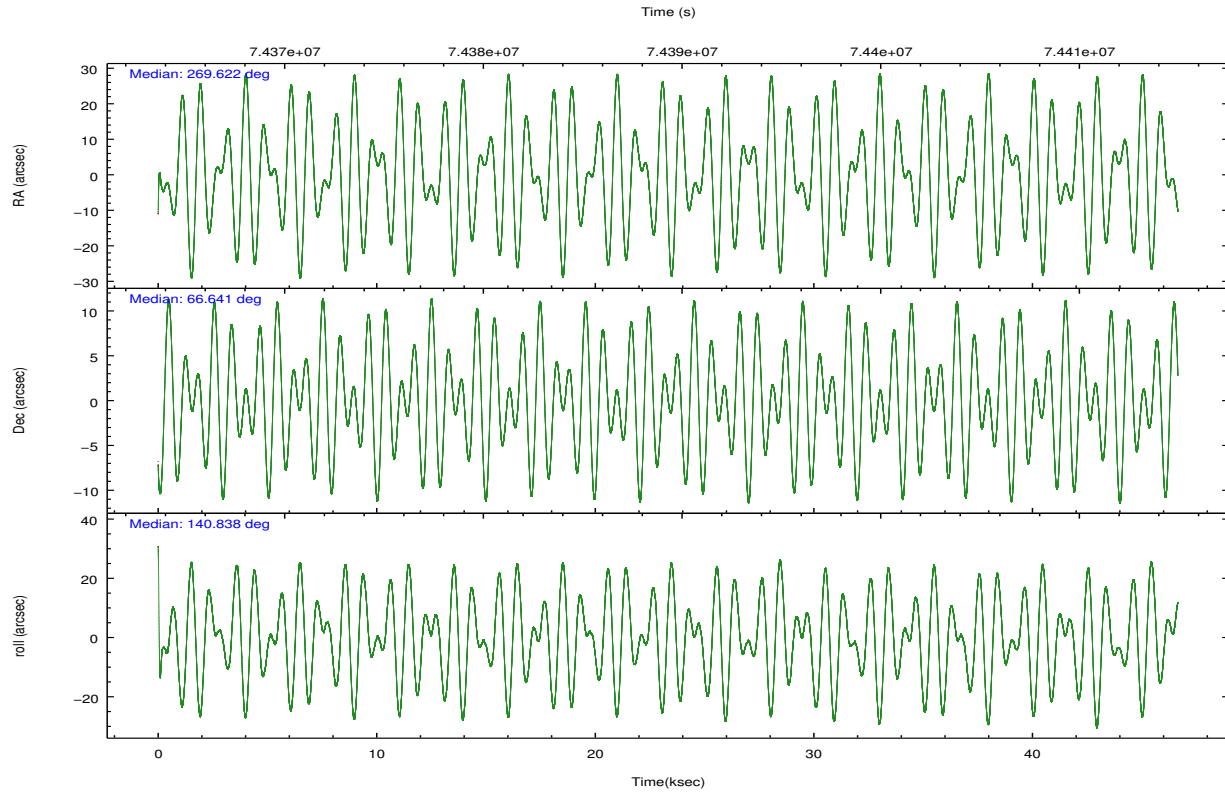
	ccd 4	ccd 5	ccd 6	ccd 7	ccd 8	ccd 9		ccd 4	ccd 5	ccd 6	ccd 7	ccd 8	ccd 9
level 1 events	364762	435783	332702	382991	404284	320574	grade 0 events	15427	32310	14049	16936	23850	14824
rejected events	328068	228054	298505	219436	328649	285011		4%	7%	4%	4%	5%	4%
rejected %	89%	52%	89%	57%	81%	88%	grade 1 events	172	1939	167	381	230	127
								0%	0%	0%	0%	0%	0%
							grade 2 events	8533	59007	6767	32442	16586	6979
								2%	13%	2%	8%	4%	2%
							grade 3 events	3498	8643	3467	15093	8250	3667
								0%	1%	1%	3%	2%	1%
							grade 4 events	3340	8265	3564	15510	7623	3490
								0%	1%	1%	4%	1%	1%
							grade 5 events	10283	31766	12450	36849	15596	12479
								2%	7%	3%	9%	3%	3%
							grade 6 events	6100	100671	6548	84448	19804	6793
								1%	23%	1%	22%	4%	2%
							grade 7 events	317409	193182	285690	181332	312345	272215
								87%	44%	85%	47%	77%	84%

## 2.2 Compared Parameters

Parameter	Planned	Actual	Parameter	Planned	Actual
Instrument	ACIS	ACIS	Obspar format version number	7	7
Detector	ACIS-456789	ACIS-456789	Obspar file type	PREDICTED	ACTUAL
Grating	NONE	NONE	Obspar update status	NONE	UPDATED
Data mode	VFAINT	VFAINT	Number of optional ACIS chips dropped	0	0
Observation mode	POINTING	POINTING	On-chip summing requested	N	N
[deg] Pointing RA	269.690769	269.622434618433	Subarray requested	NONE	NONE
[deg] Pointing Dec	66.636465	66.6407509617469	Alternating exposures requested	N	N
[deg] Pointing Roll	140.626802	140.8461724302975	[s] Primary exposure time	0.000000	3.2
[mm] SIM focus pos	-0.684267	-0.6828225247311905			
[mm] SIM defocus	0	0.001444936568705701			
[mm] SIM translation stage pos	-190.132523	-190.1425803651734			
[mm] SIM translation stage offset	0	0.01005778216563158			
[s] Observation start time (MET)	74366124.184000	74364875.40163399			
Observation start date	2000-05-10T17:14:20	2000-05-10T16:54:35			
[s] Observation end time (MET)	74412624.184000	74413513.19092			
Observation end date	2000-05-11T06:09:20	2000-05-11T06:25:13			
Read mode	TIMED	TIMED			

## 2.3 Aspect



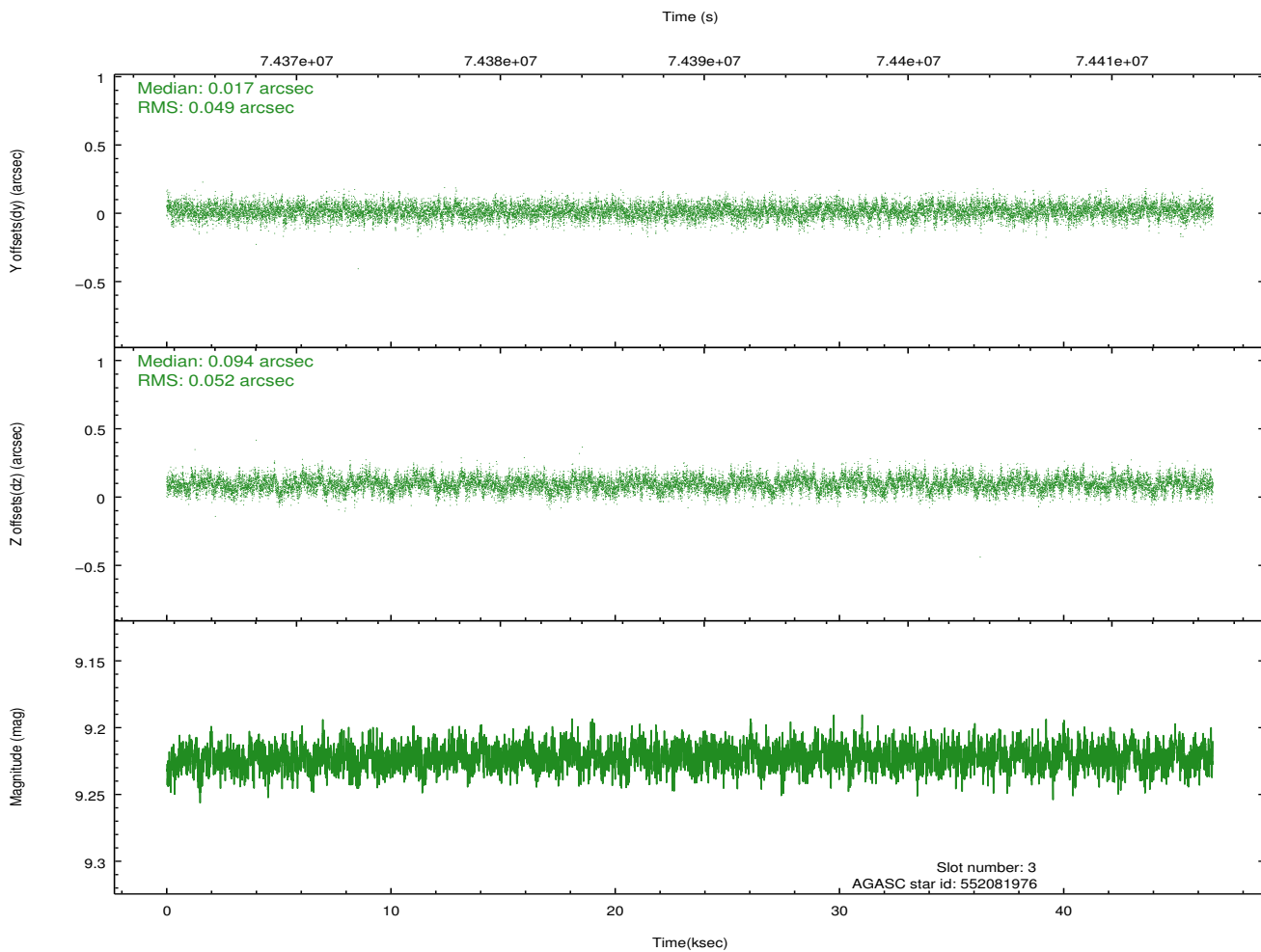
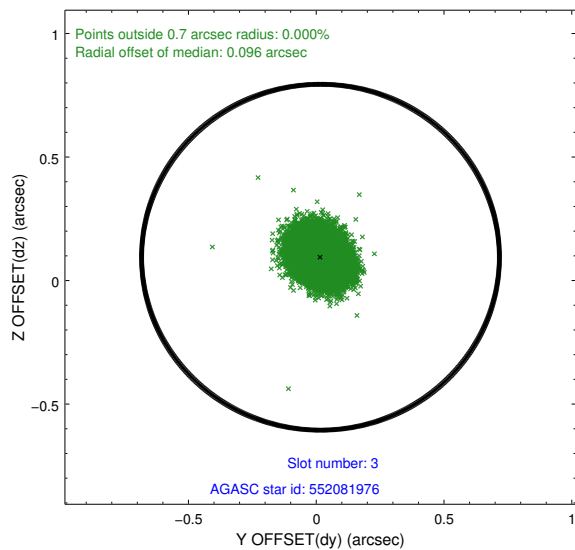
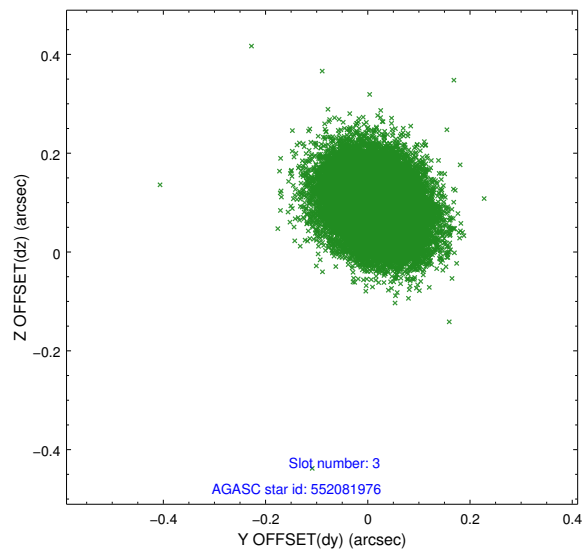


### Slot Statistics

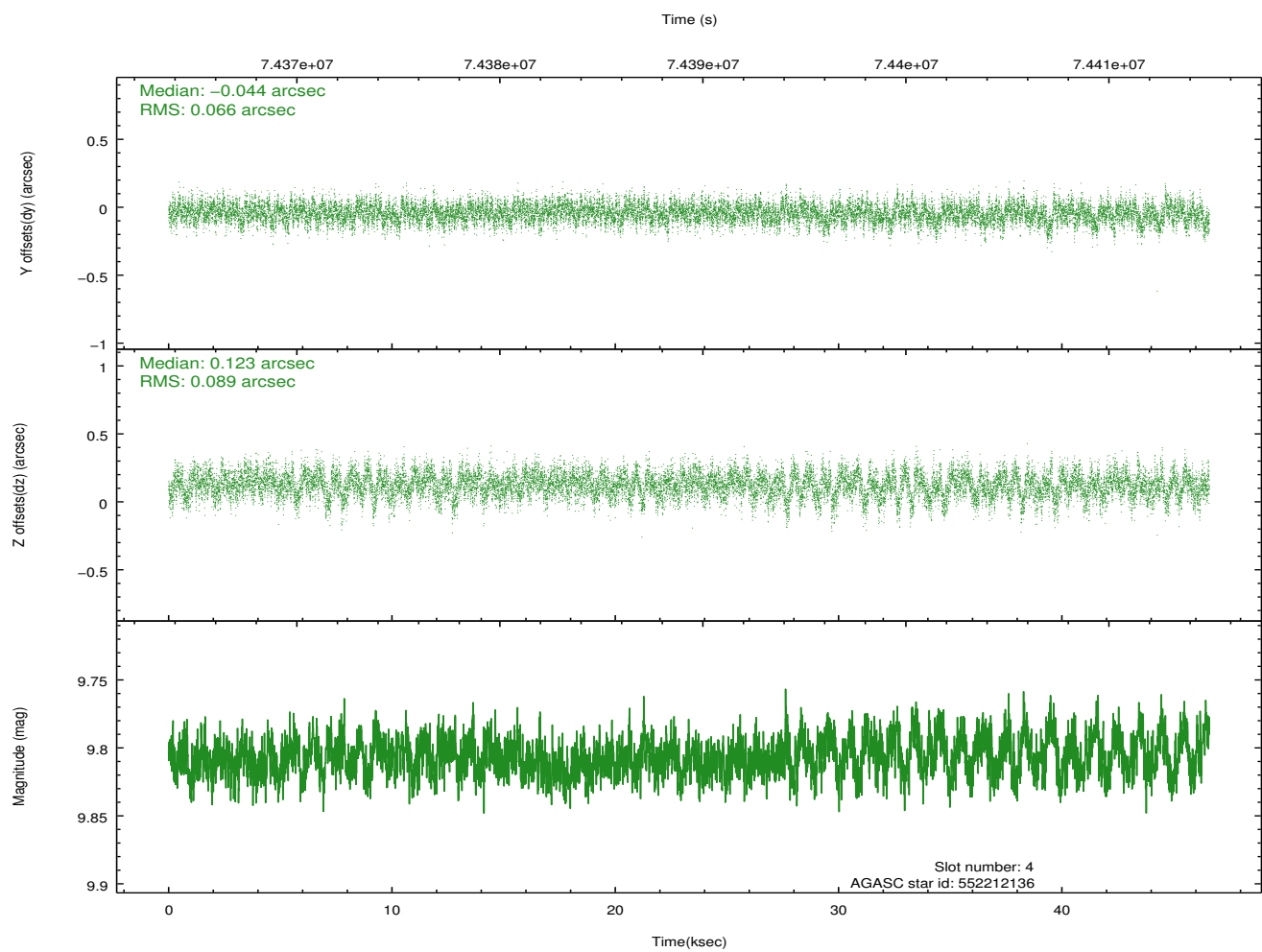
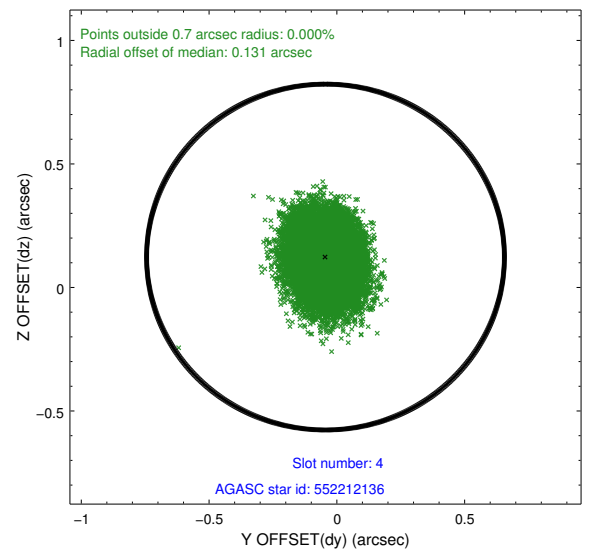
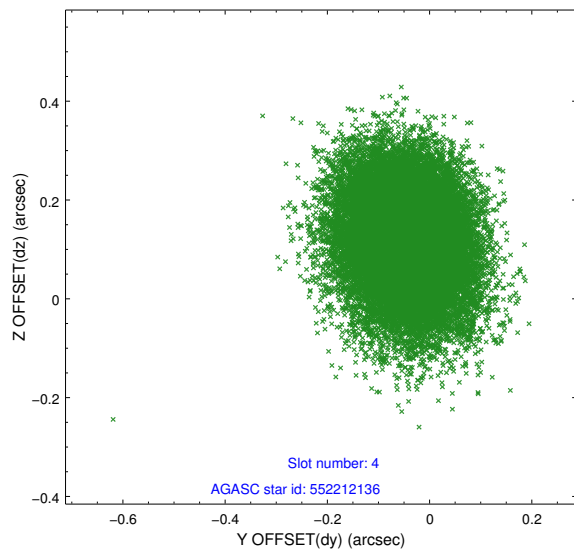
slot	status	id	mag	n_pts	med_dy	med_dz	dr1	dr2	ra	dec	mean_y	mean_z
0	FID	ACIS-S-2	7.11	11377	-0.021	-0.011	0.008	0.013	0.000000	0.000000	-754.07	-1725.45
1	FID	ACIS-S-4	7.21	11376	-0.006	0.013	0.006	0.011	0.000000	0.000000	2159.24	183.03
2	FID	ACIS-S-5	7.23	11378	-0.005	0.007	0.007	0.012	0.000000	0.000000	-1806.89	176.73
3	GUIDE	552081976	9.22	22750	0.017	0.094	0.076	0.124	269.000724	66.928627	1423.07	-199.56
4	GUIDE	552212136	9.81	22687	-0.044	0.123	0.117	0.194	271.355017	66.913810	-1162.43	-2286.41
5	GUIDE	552078304	9.72	22743	-0.133	-0.123	0.130	0.202	268.311513	66.266522	713.30	2279.85
6	GUIDE	552216648	9.77	22737	0.012	-0.021	0.115	0.185	270.130141	67.075369	527.59	-1613.95
7	GUIDE	552083856	10.26	22743	0.144	-0.074	0.208	0.331	269.845934	66.048959	-1517.02	1490.42

## 2.4 Star Slots

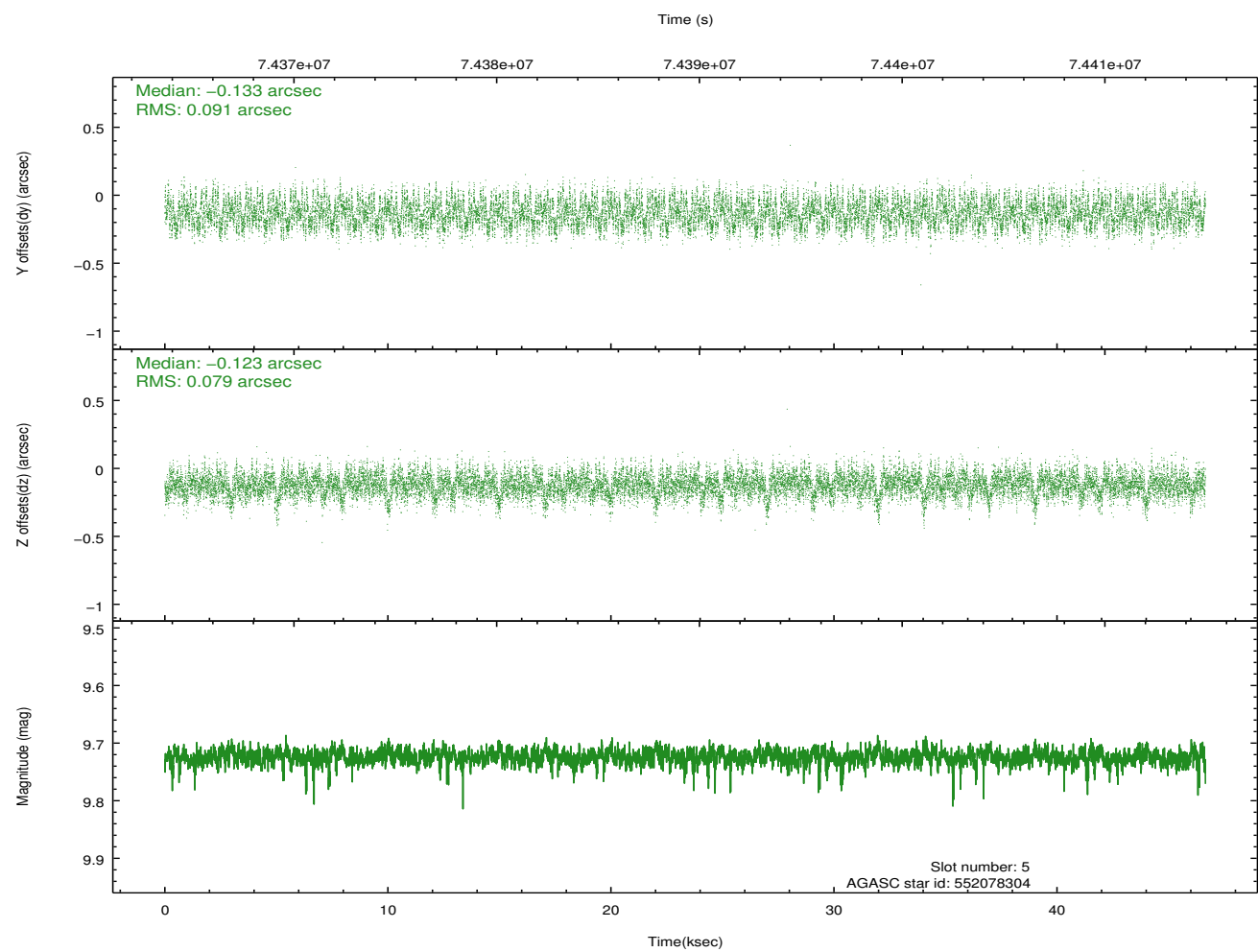
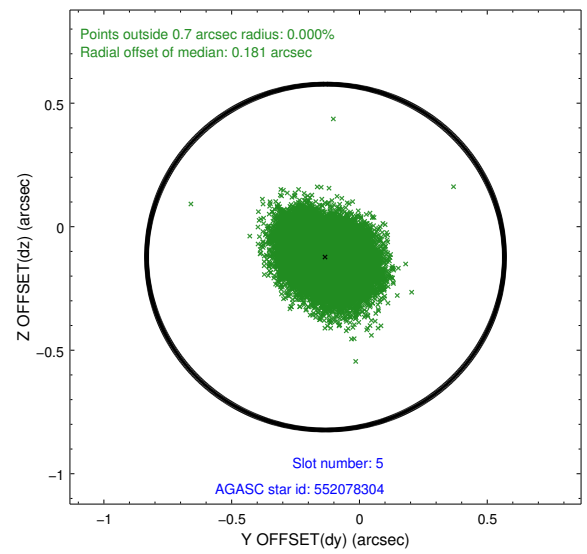
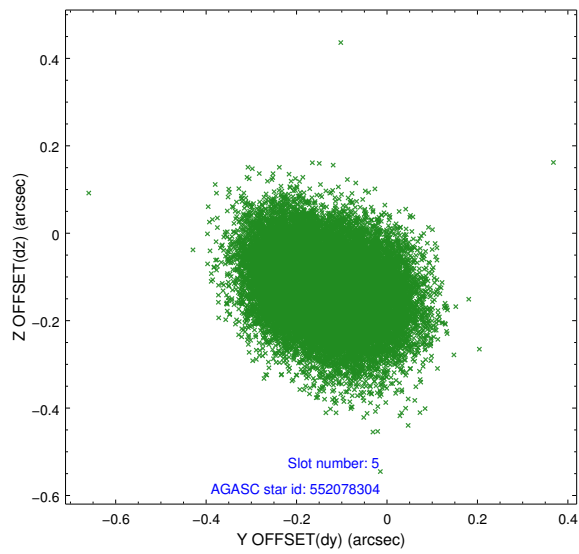
### 2.4.1 Slot 3



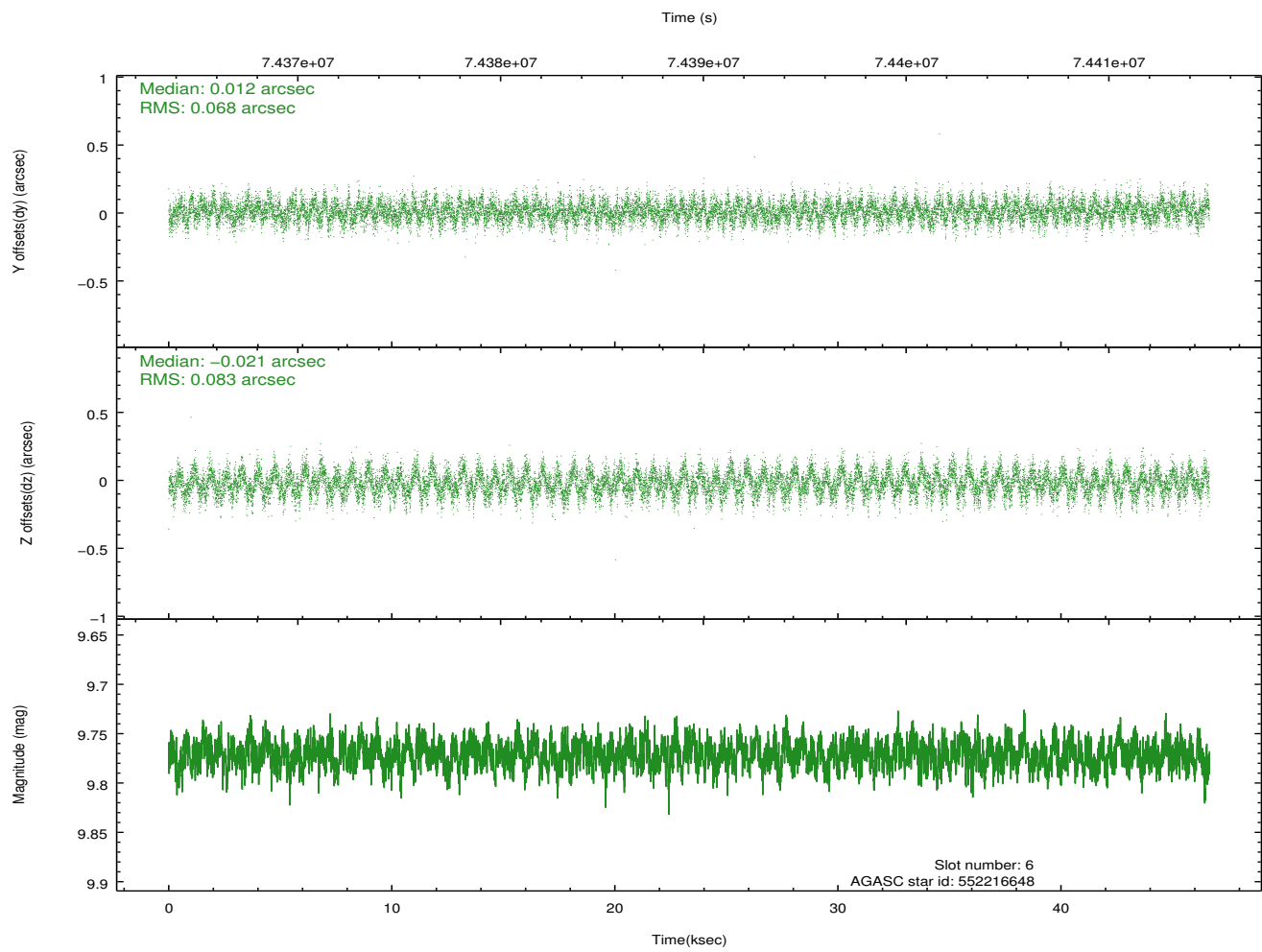
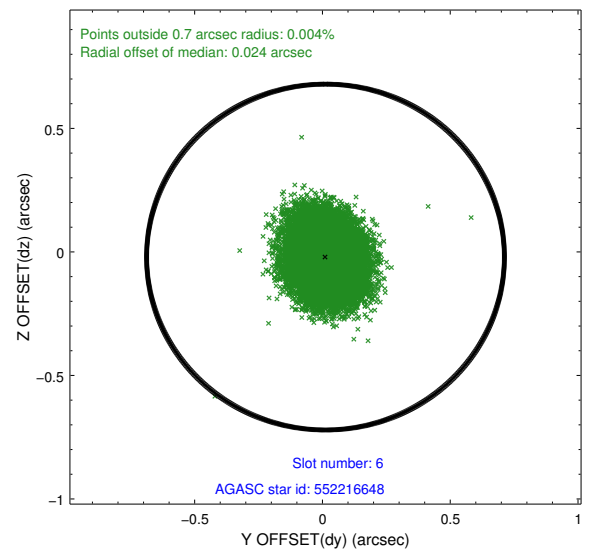
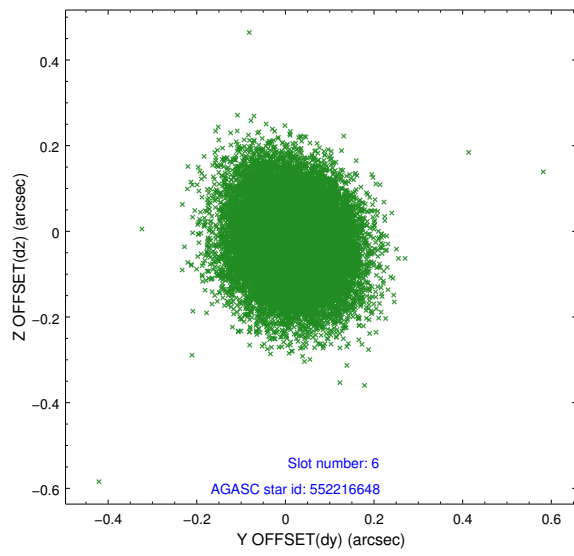
## 2.4.2 Slot 4



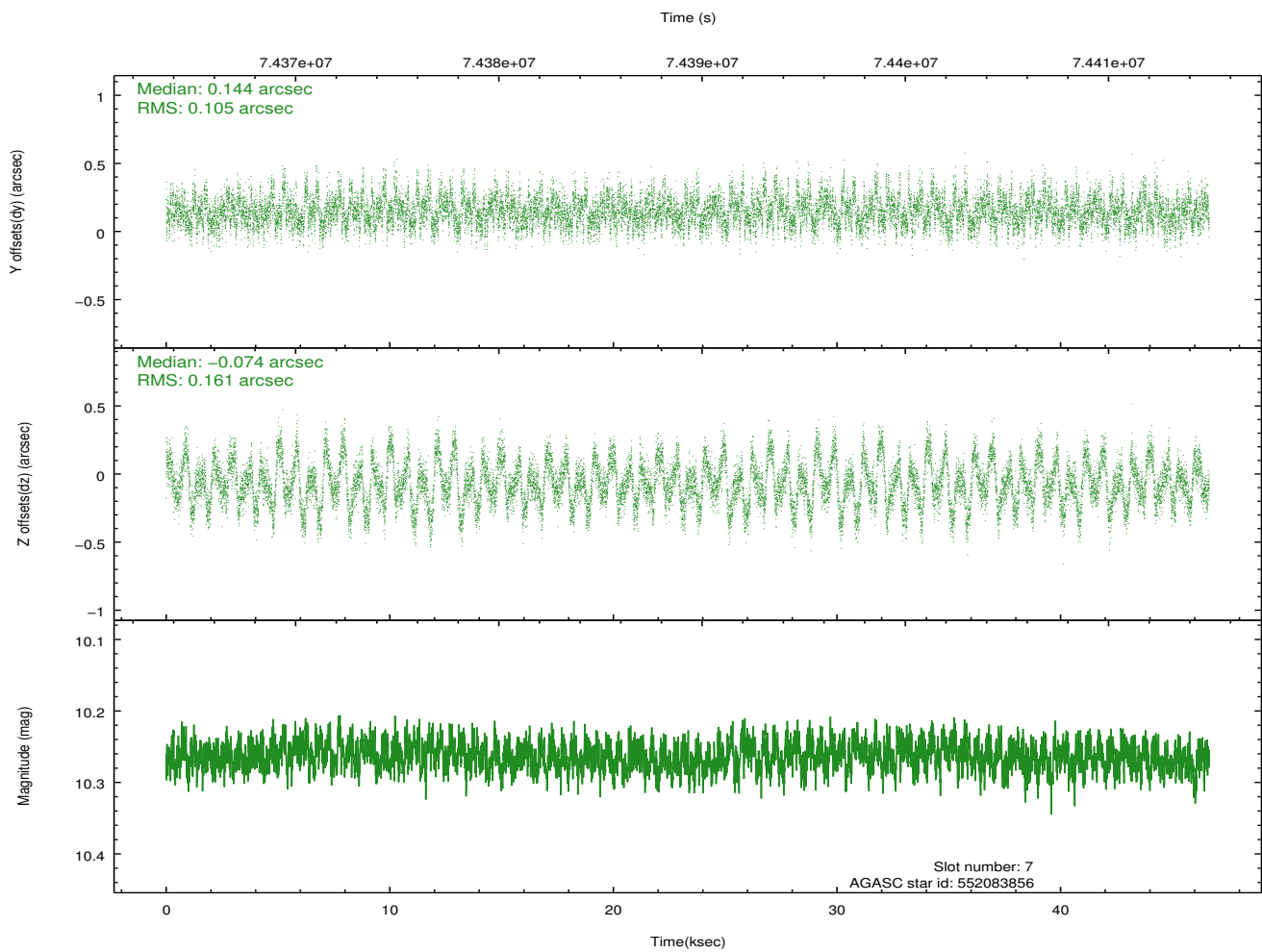
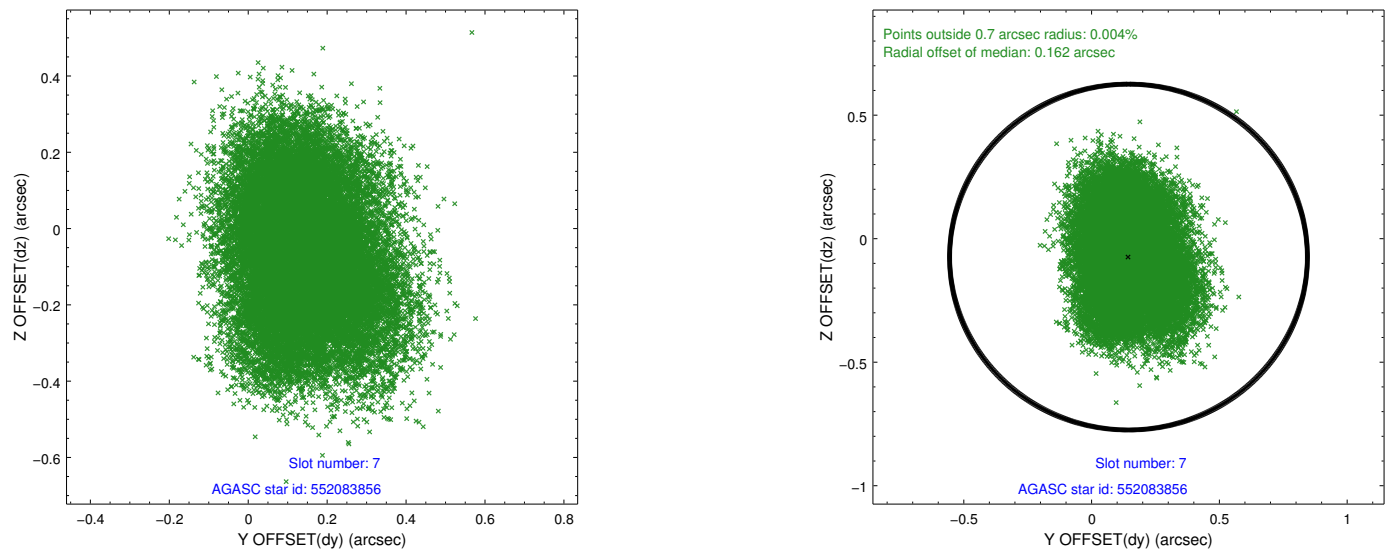
### 2.4.3 Slot 5



## 2.4.4 Slot 6

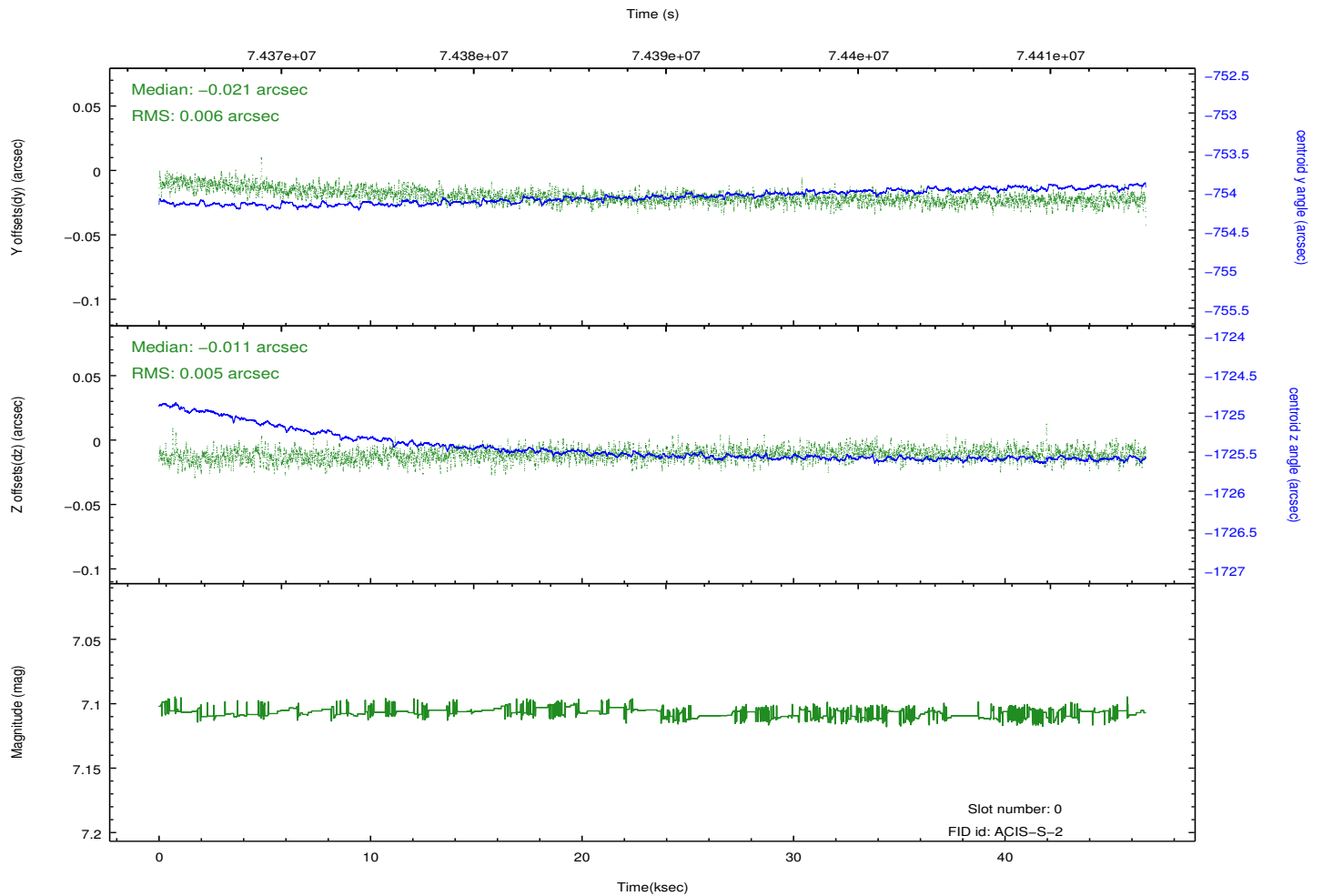
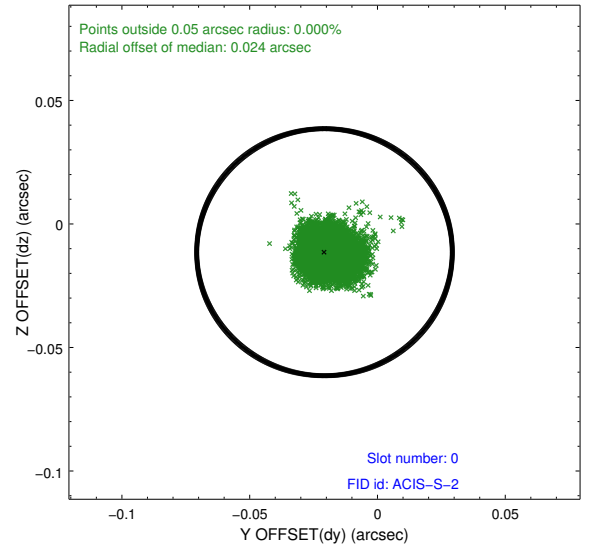
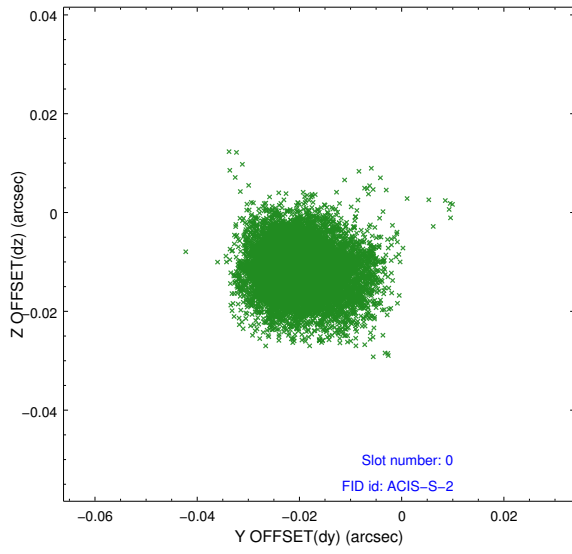


## 2.4.5 Slot 7

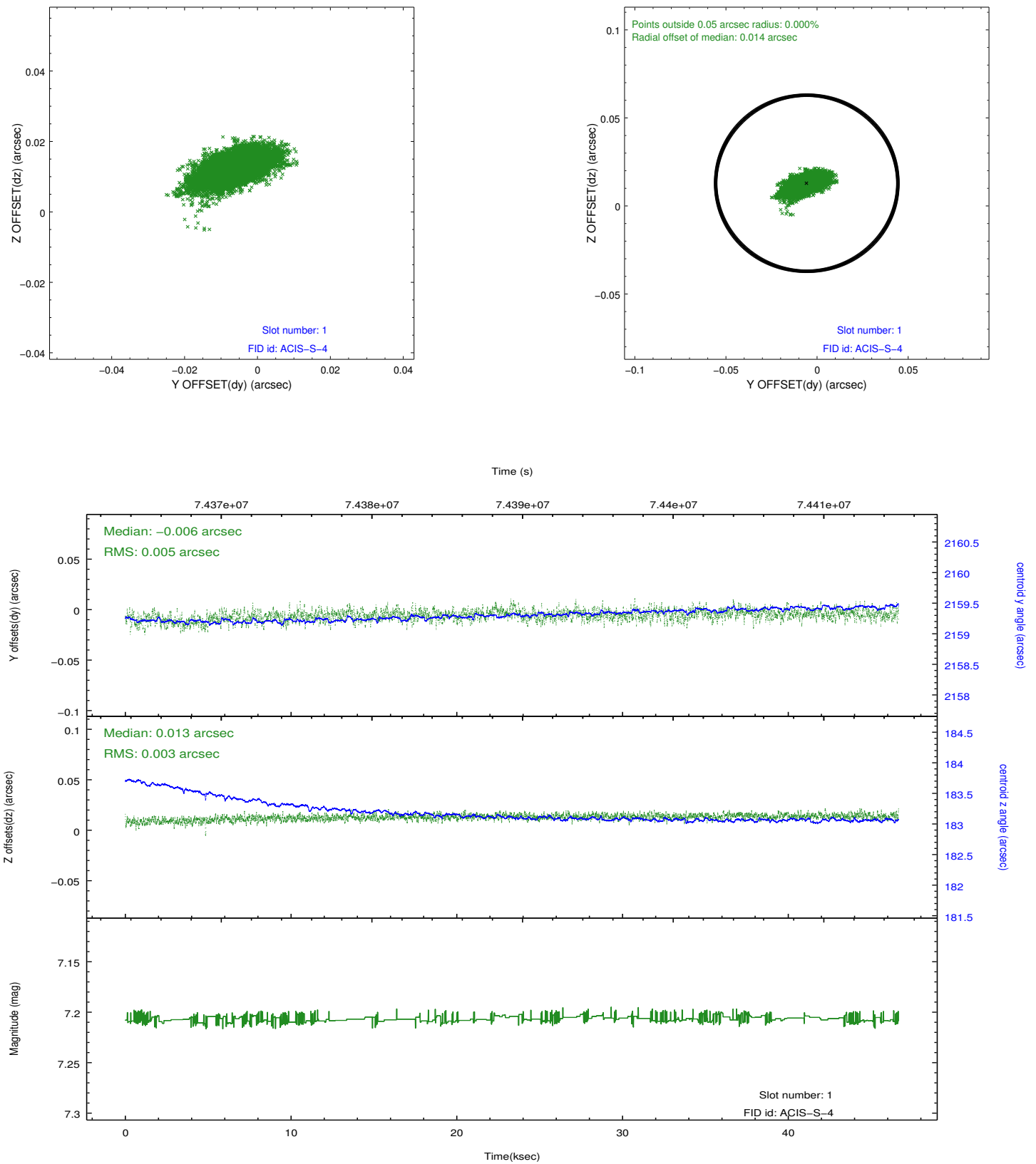


## 2.5 FID Slots

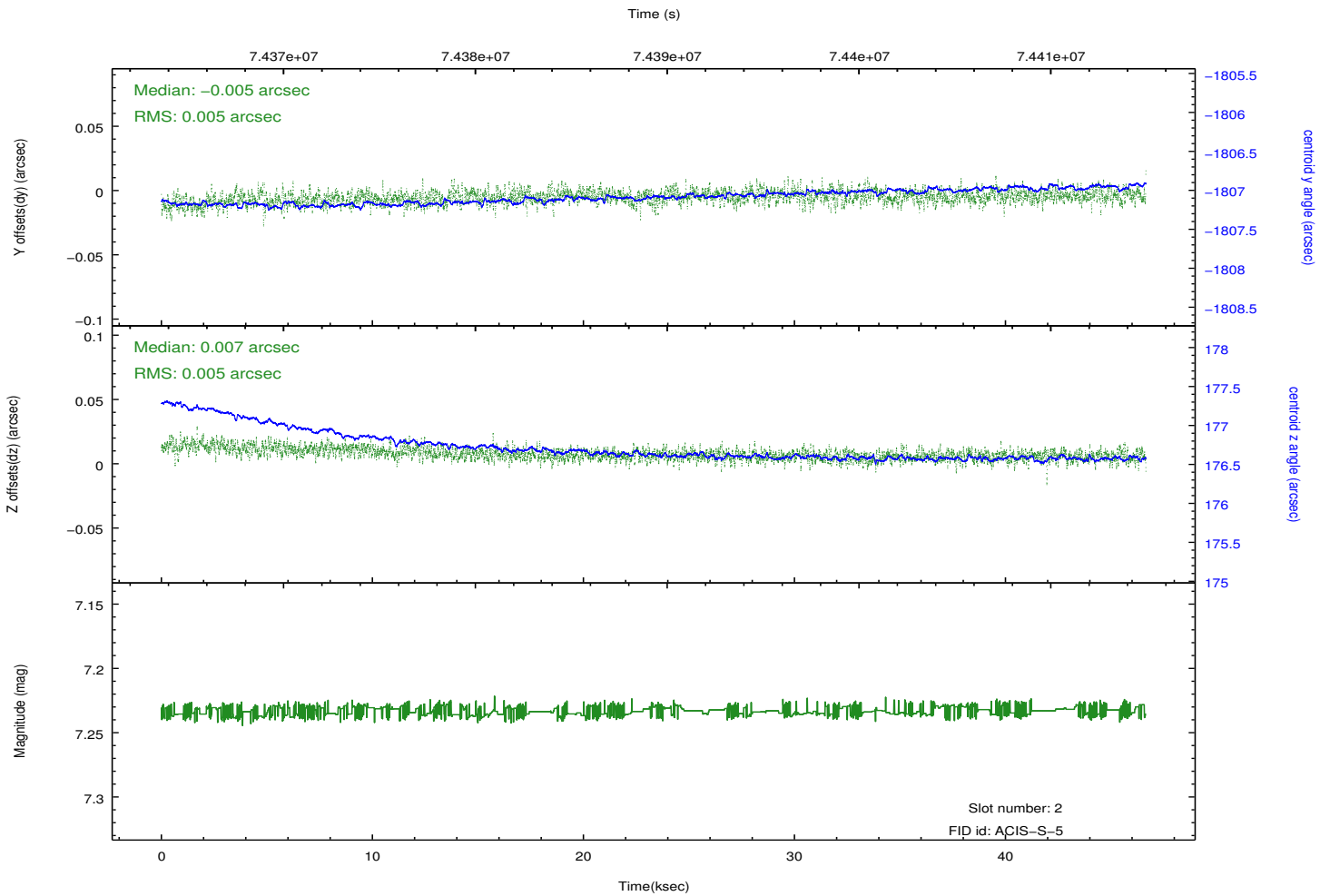
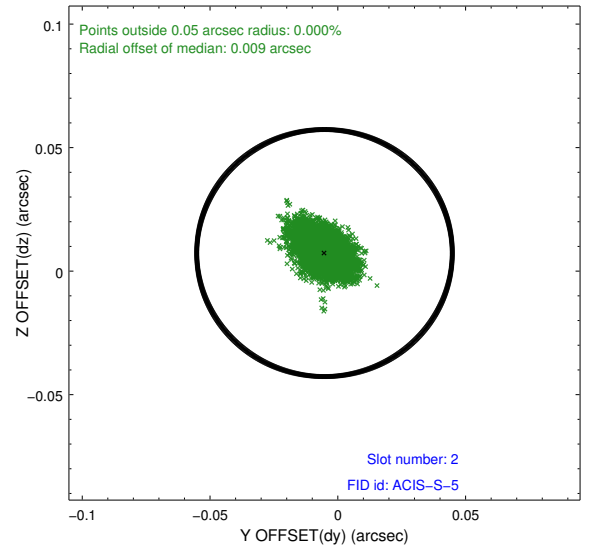
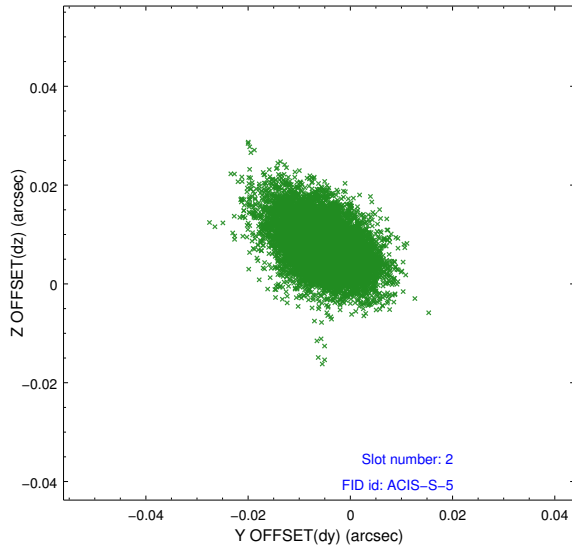
### 2.5.1 Slot 0



## 2.5.2 Slot 1



### 2.5.3 Slot 2



# A Summary

## A.1 Status

V&V Scientist	Jen Lauer
V&V Date (YYYY-MM-DD)	2012.08.30
V&V Edition	1
V&V Disposition and Status	OK
V&V Charge Time	46.649

## A.2 Comments