

V&V Reference Report

L2 ASCDS Version : 8.4.3

Observation 6400 - L2 Version 2
Chandra X-Ray Center

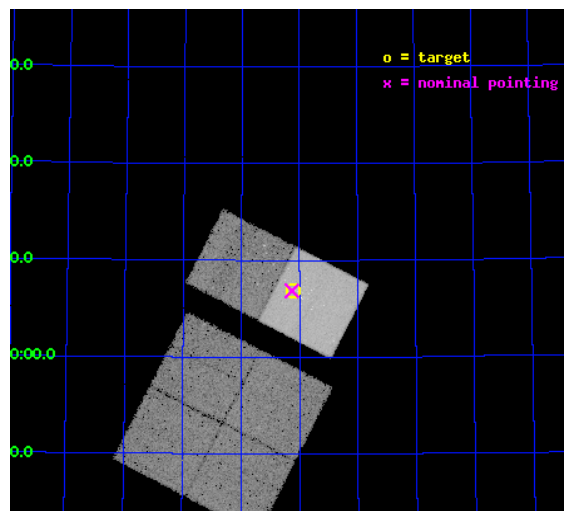
L2 Processing Date : Mar 28 2012

Contents

1	Front	2
2	OBI	3
2.1	OBI	3
2.1.1	Images	3
2.1.2	Bias	3
2.1.3	Parameters	4
2.1.4	Events	4
2.2	Compared Parameters	5
2.3	Aspect	6
2.4	Star Slots	9
2.4.1	Slot 3	9
2.4.2	Slot 4	10
2.4.3	Slot 5	11
2.4.4	Slot 6	12
2.4.5	Slot 7	13
2.5	FID Slots	14
2.5.1	Slot 0	14
2.5.2	Slot 1	15
2.5.3	Slot 2	16
A	Summary	17
A.1	Status	17
A.2	Comments	17

1 Front

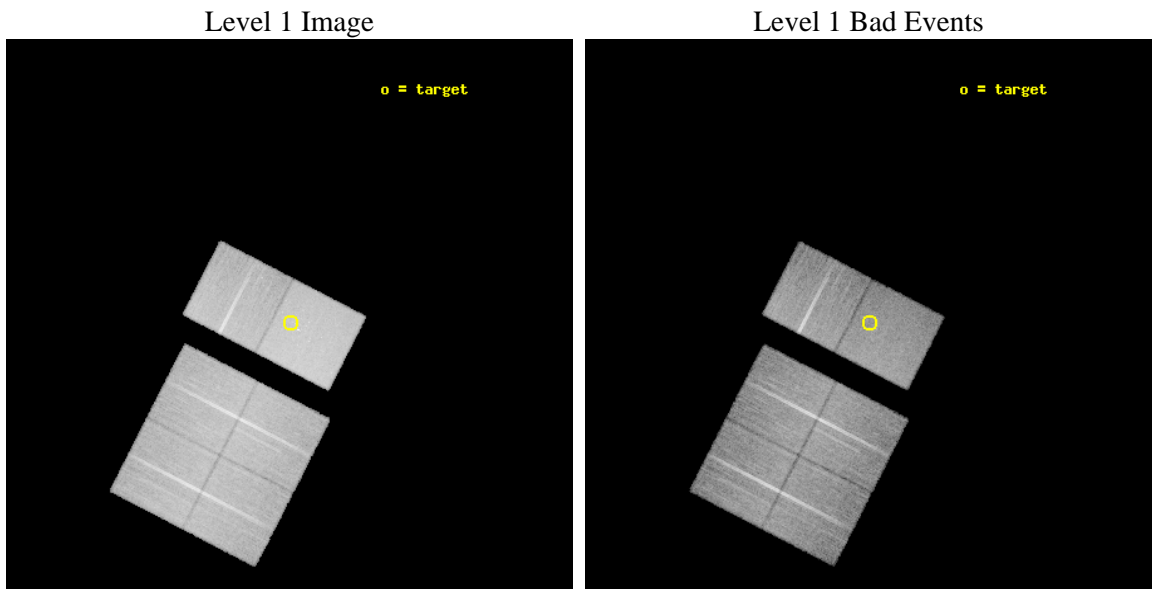
seq_num	200377	Sequence number
obs_id	6400	Observation id
title	On the origin of X-ray emission from Herbig Ae/Be stars	Proposal t
observer	Dr Beate Stelzer	Principal investigator
object	V373 Cep	Source name
dtycycle	0	
cycle	P	events from which exps? Prim/Second/Both
ra_targ	325.777917	Observer's specified target RA [deg]
dec_targ	66.115167	Observer's specified target Dec [deg]
ra_nom	325.78253850603	Nominal RA [deg]
dec_nom	66.114263079751	Nominal Dec [deg]
roll_nom	27.247432330733	Nominal Roll [deg]
revision	2	Processing version of data
ontime	22953.599914491	Sum of GTIs [s]
livetime	22662.947611375	Livetime [s]
ontime0	22953.599914491	Sum of GTIs [s]
ontime1	22950.358944207	Sum of GTIs [s]
ontime2	22953.599914491	Sum of GTIs [s]
ontime3	22953.599914491	Sum of GTIs [s]
ontime6	22953.599914491	Sum of GTIs [s]
ontime7	22953.599914491	Sum of GTIs [s]
l2events	211628	Number of level 2 events



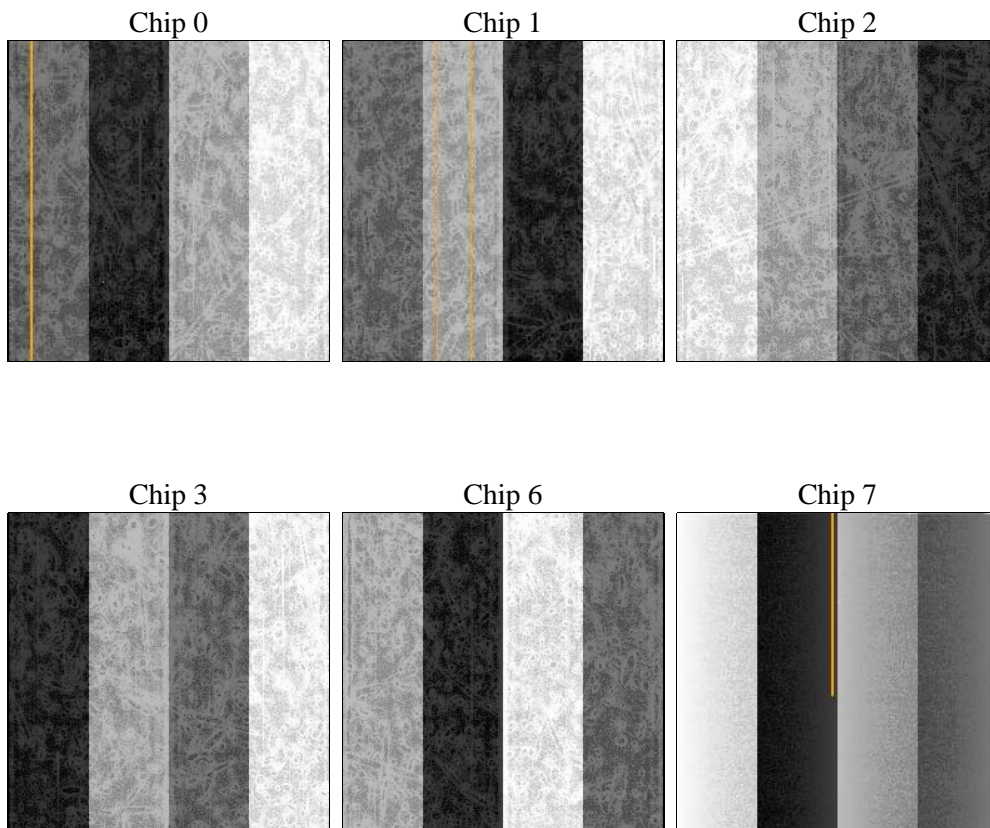
2 OBI

2.1 OBI

2.1.1 Images



2.1.2 Bias



2.1.3 Parameters

obi_num	0	Obi number	sched_exp_time	23000.000000	[s] Scheduled observation exposure time
ascdsver	8.4.3	Processing system revision	ontime	22953.599914491	Sum of GTIs [s]
caldbver	4.4.8	 	ontime0	22953.599914491	Sum of GTIs [s]
date	2012-03-28T03:39:41	Date and time of file creation	ontime1	22950.358944207	Sum of GTIs [s]
revision	2	Processing version of data	ontime2	22953.599914491	Sum of GTIs [s]
			ontime3	22953.599914491	Sum of GTIs [s]
			ontime6	22953.599914491	Sum of GTIs [s]
			ontime7	22953.599914491	Sum of GTIs [s]
			l1events	1225859	Number of level 1 events

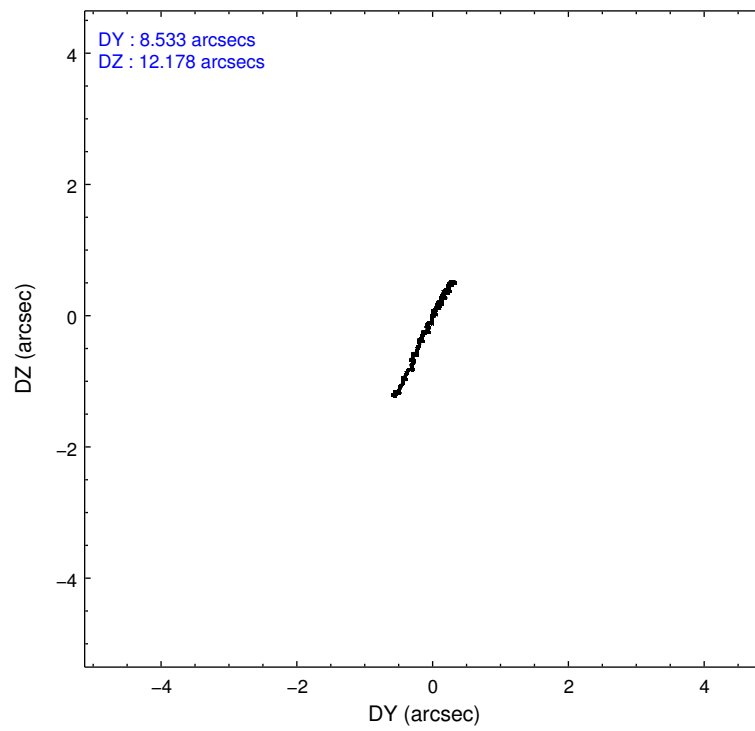
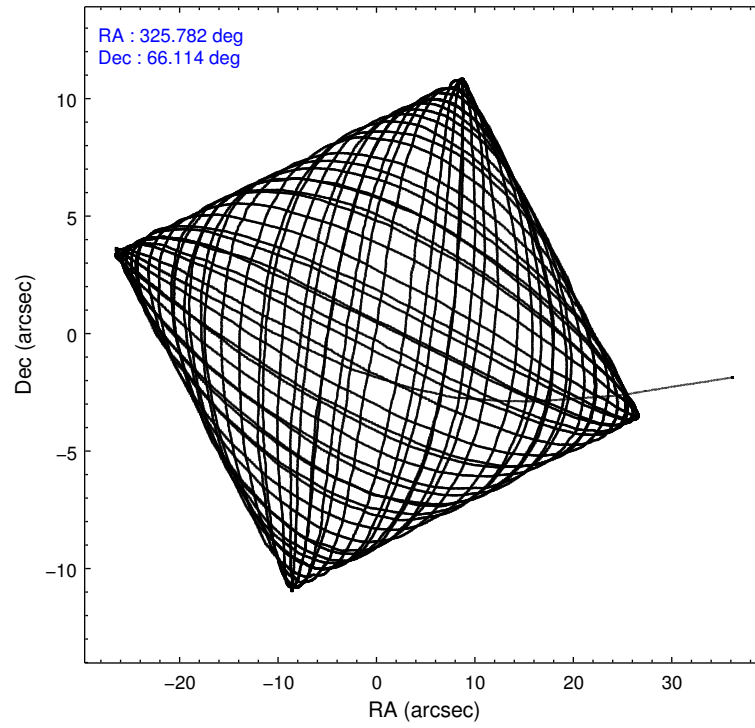
2.1.4 Events

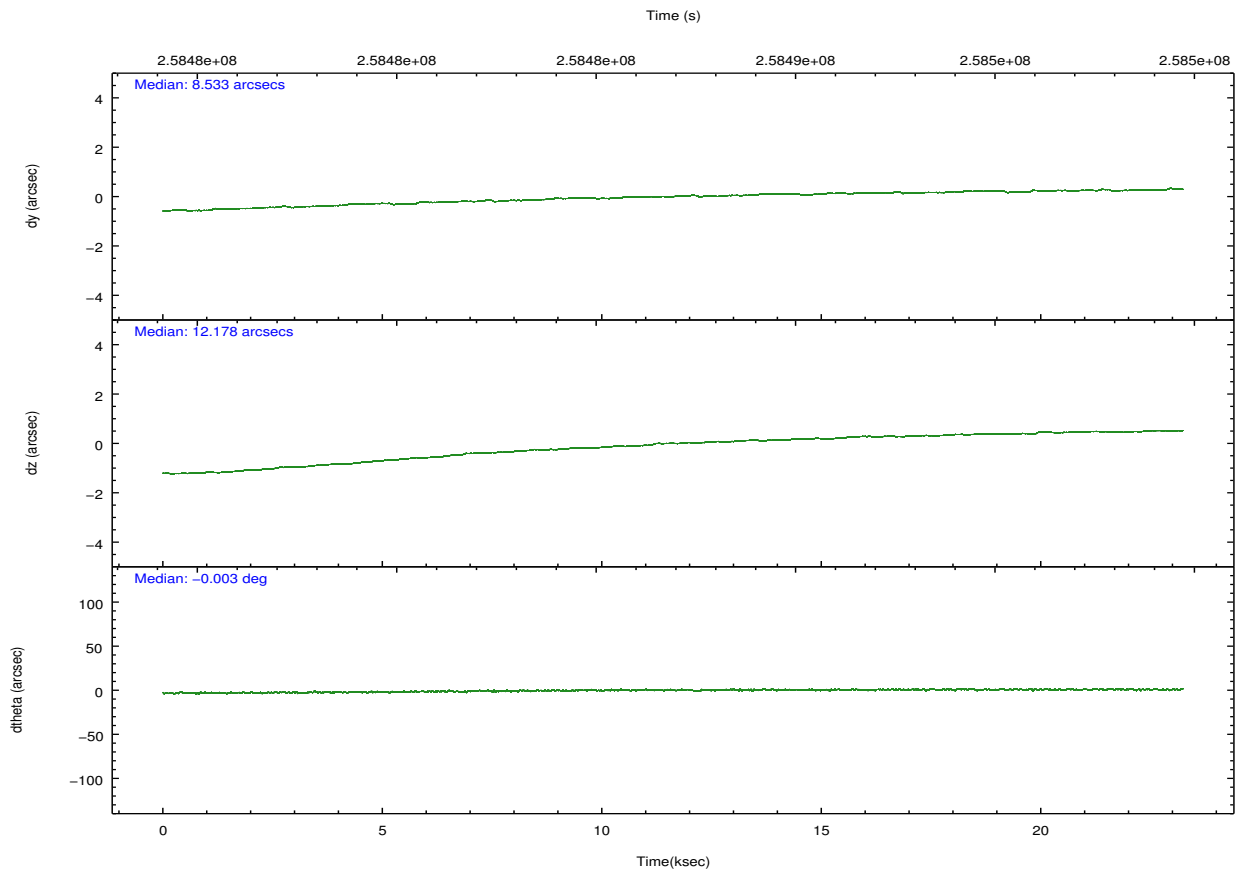
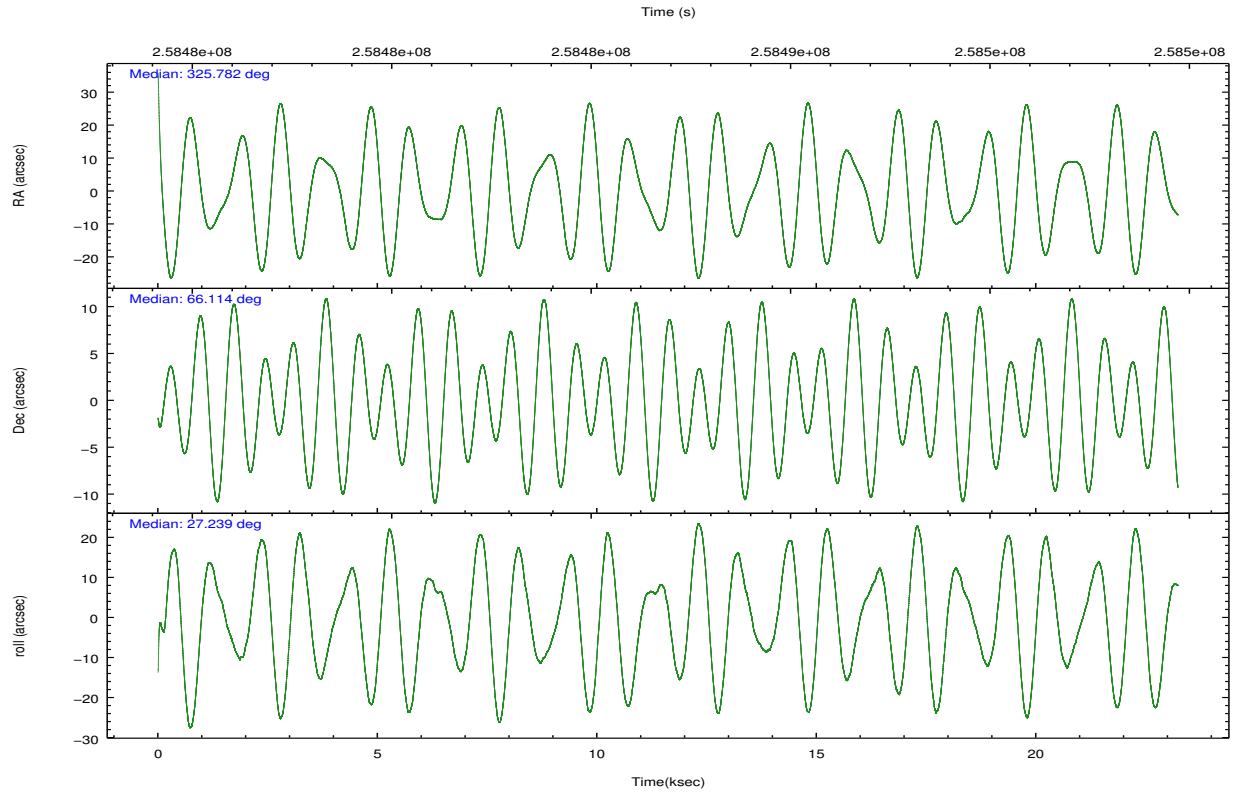
	ccd 0	ccd 1	ccd 2	ccd 3	ccd 6	ccd 7		ccd 0	ccd 1	ccd 2	ccd 3	ccd 6	ccd 7
level 1 events	188233	178553	197813	191819	198785	270656	grade 0 events	9822	9354	10101	9790	9241	10203
rejected events	164535	154212	174852	169167	175399	156762		5%	5%	5%	5%	4%	3%
rejected %	87%	86%	88%	88%	88%	57%	grade 1 events	126	86	121	151	117	279
								0%	0%	0%	0%	0%	0%
							grade 2 events	5365	5446	4883	4449	4978	22904
								2%	3%	2%	2%	2%	8%
							grade 3 events	2180	2357	2122	2122	2207	10025
								1%	1%	1%	1%	1%	3%
							grade 4 events	2190	2448	2072	2216	2268	9989
								1%	1%	1%	1%	1%	3%
							grade 5 events	7955	8220	7504	8907	9305	25661
								4%	4%	3%	4%	4%	9%
							grade 6 events	4142	4737	3784	4079	4695	60787
								2%	2%	1%	2%	2%	22%
							grade 7 events	156453	145905	167226	160105	165974	130808
								83%	81%	84%	83%	83%	48%

2.2 Compared Parameters

Parameter	Planned	Actual	Parameter	Planned	Actual
Instrument	ACIS	ACIS	Obspar format version number	7	7
Detector	ACIS-012367	ACIS-012367	Obspar file type	PREDICTED	ACTUAL
Grating	NONE	NONE	Obspar update status	NONE	UPDATED
Data mode	FAINT	FAINT	Number of optional ACIS chips dropped	0	0
Observation mode	POINTING	POINTING	On-chip summing requested	N	N
[deg] Pointing RA	325.746953	325.7825385060266	Subarray requested	NONE	NONE
[deg] Pointing Dec	66.091155	66.1142630797508	Alternating exposures requested	N	N
[deg] Pointing Roll	27.123319	27.24743233073305	[s] Primary exposure time	0.000000	3.2
[mm] SIM focus pos	-0.684267	-0.6828225247311905			
[mm] SIM defocus	0	0.001444936568705701			
[mm] SIM translation stage pos	-190.132523	-190.1400660498719			
[mm] SIM translation stage offset	0	0.00754346686406393			
[s] Observation start time (MET)	258475552.184000	258474558.03255			
Observation start date	2006-03-11T14:44:47	2006-03-11T14:29:18			
[s] Observation end time (MET)	258498552.184000	258499814.54623			
Observation end date	2006-03-11T21:08:07	2006-03-11T21:30:14			
Read mode	TIMED	TIMED			

2.3 Aspect



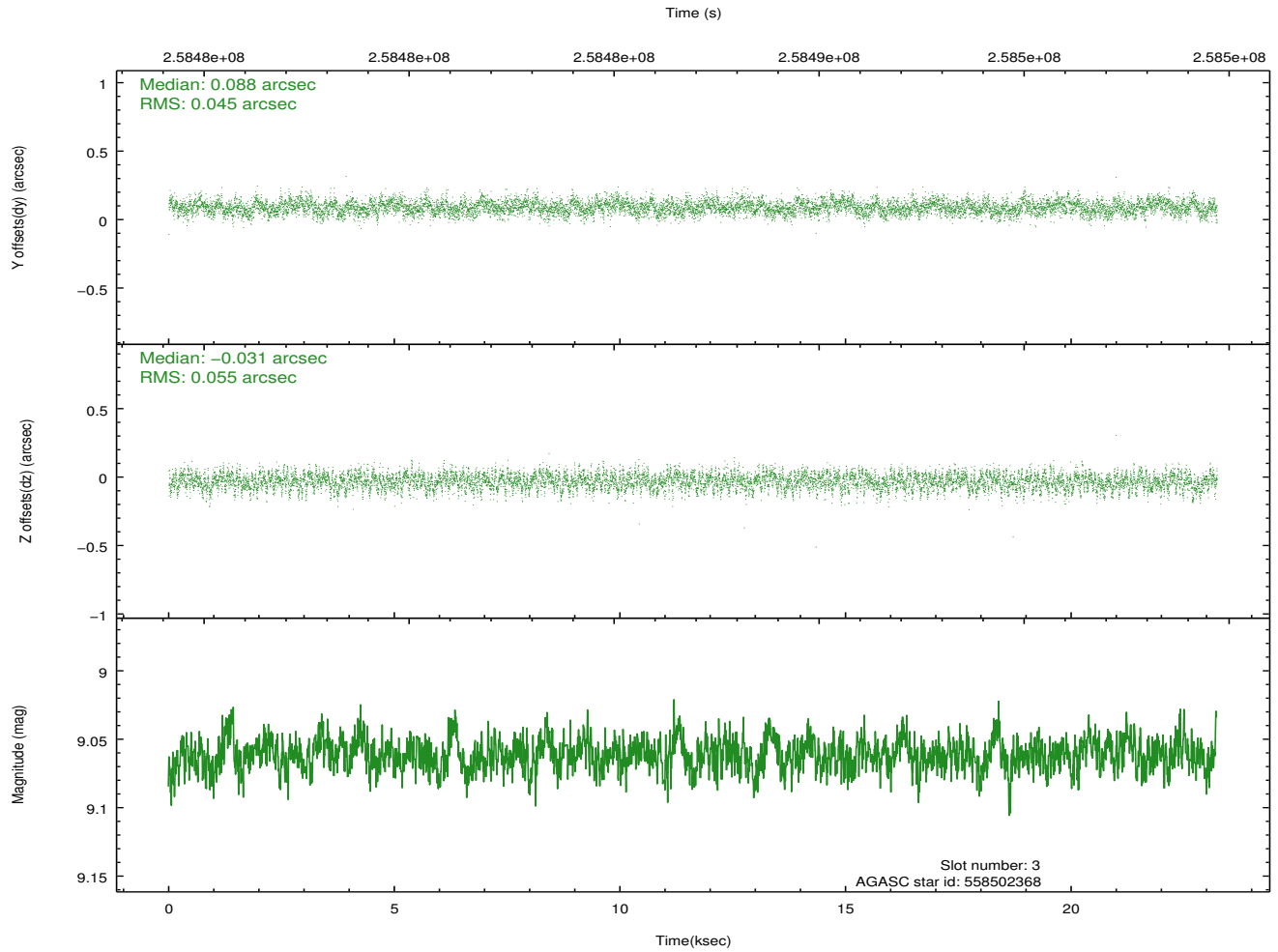
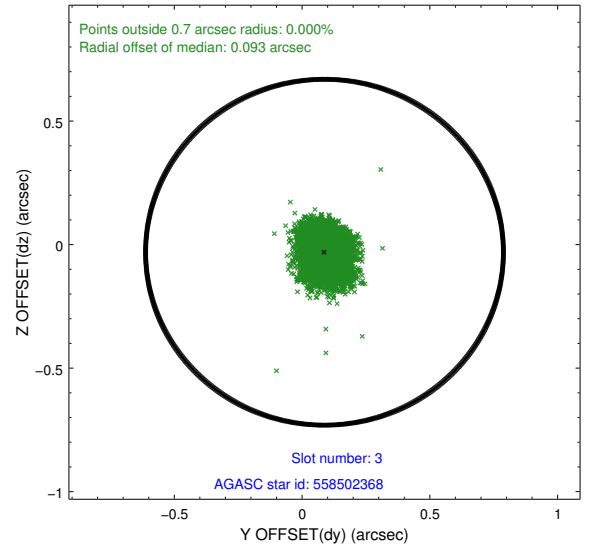
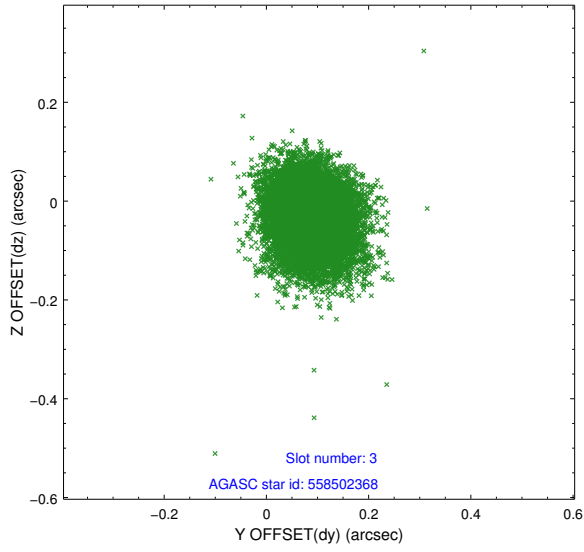


Slot Statistics

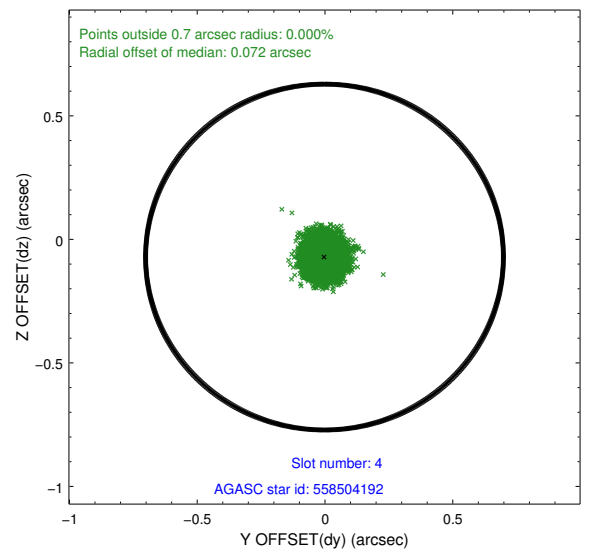
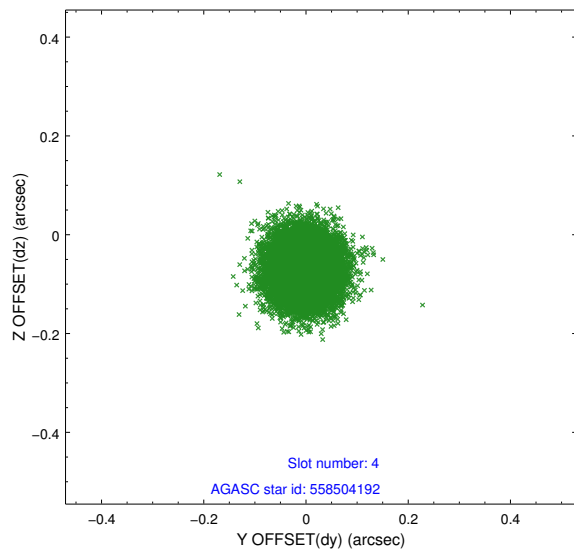
slot	status	id	mag	n_pts	med_dy	med_dz	dr1	dr2	ra	dec	mean_y	mean_z
0	FID	ACIS-S-1	7.19	5667	0.018	-0.049	0.027	0.036	0.000000	0.000000	934.72	-1729.03
1	FID	ACIS-S-2	7.11	5667	-0.079	-0.008	0.012	0.018	0.000000	0.000000	-761.21	-1733.62
2	FID	ACIS-S-4	7.20	5666	0.035	0.061	0.024	0.035	0.000000	0.000000	2151.98	175.06
3	GUIDE	558502368	9.06	11326	0.088	-0.031	0.075	0.122	325.506941	66.137779	-233.96	309.48
4	GUIDE	558504192	8.33	11328	-0.002	-0.072	0.059	0.092	325.609719	66.362228	268.92	959.28
5	GUIDE	558504400	8.13	11328	-0.082	-0.079	0.057	0.096	325.203039	66.321677	-319.95	1100.33
6	GUIDE	558507544	8.99	11322	0.021	0.105	0.078	0.130	324.844023	65.857336	-1562.38	-134.47
7	GUIDE	560208464	9.08	11318	-0.025	0.080	0.076	0.124	326.906233	65.993361	1358.04	-1072.95

2.4 Star Slots

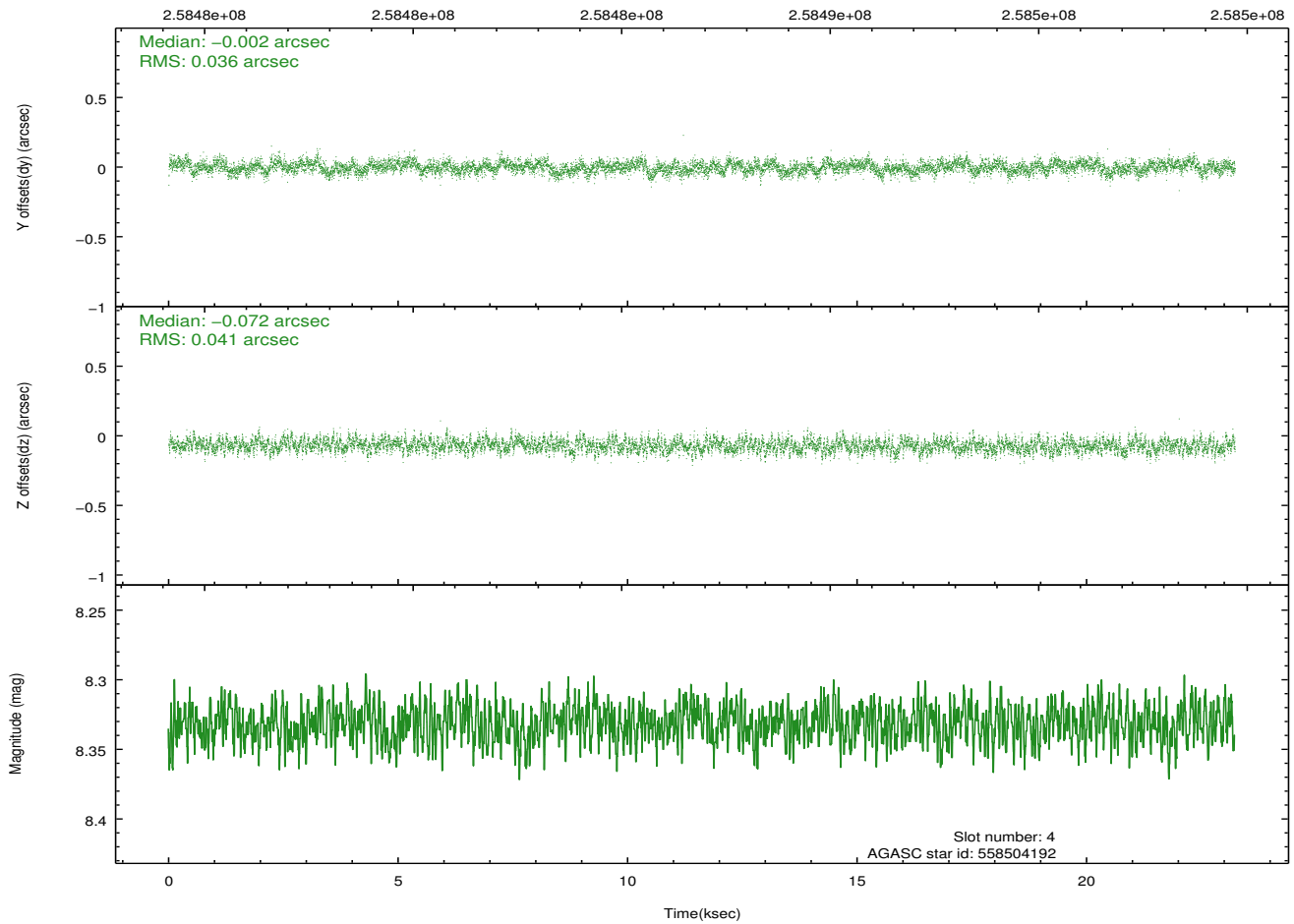
2.4.1 Slot 3



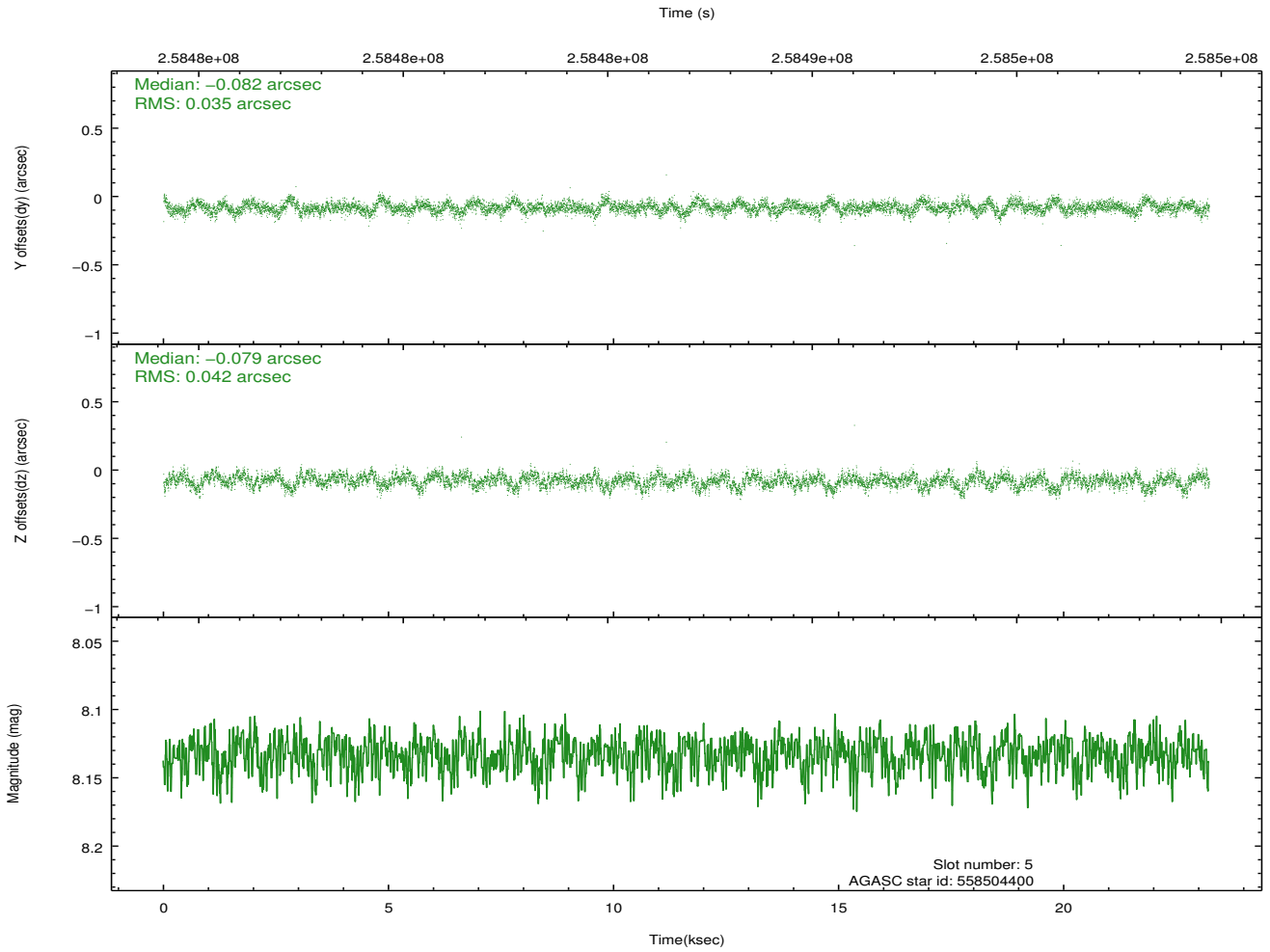
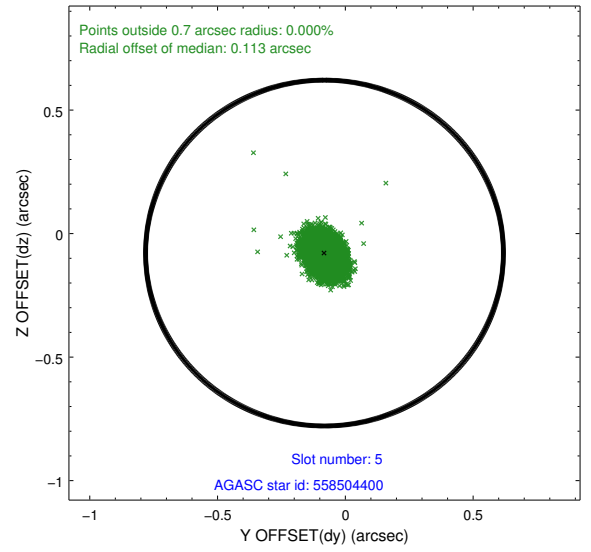
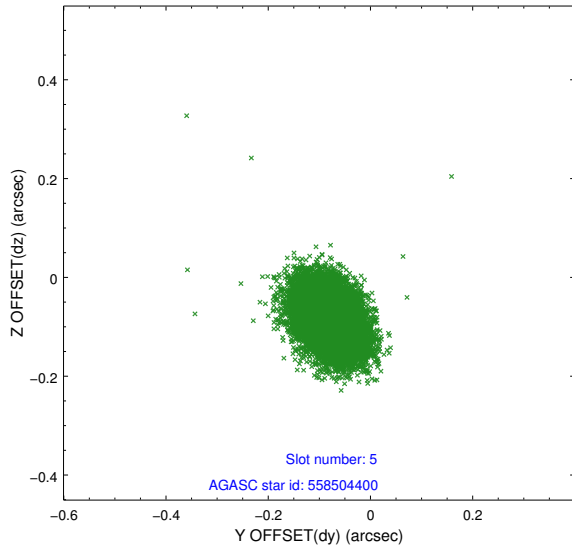
2.4.2 Slot 4



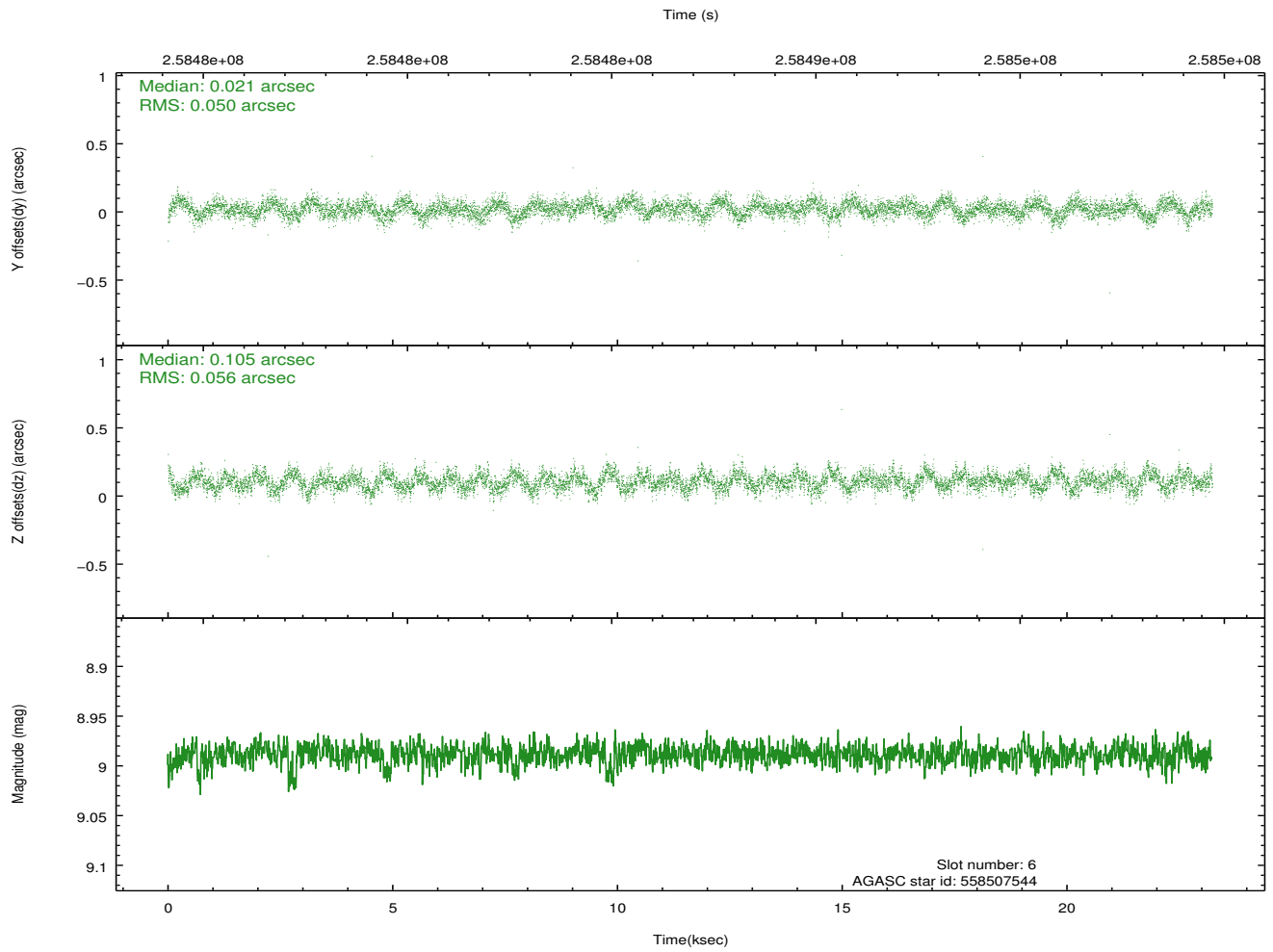
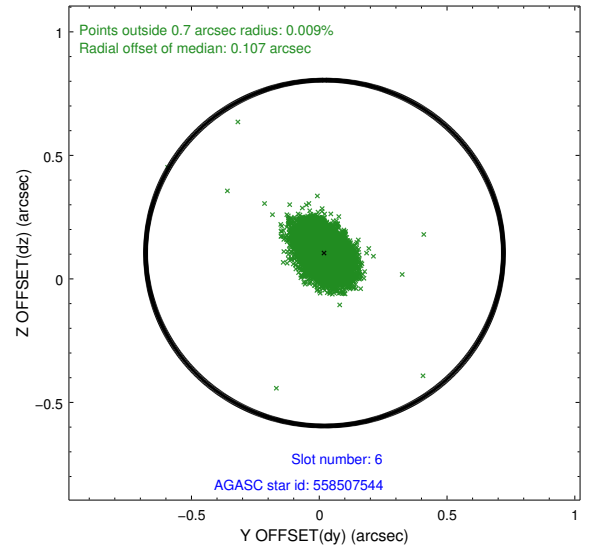
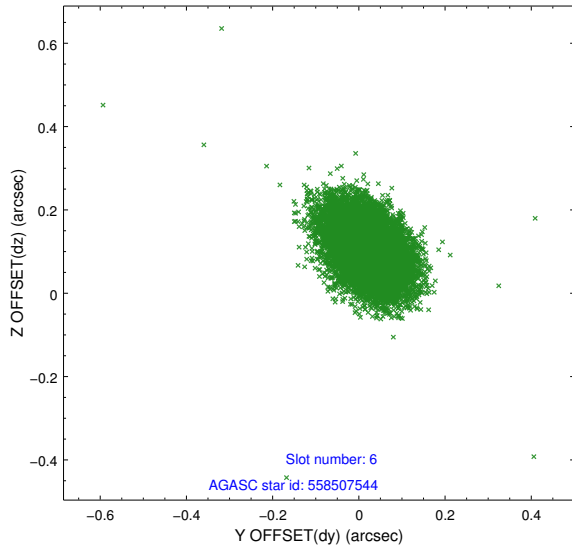
Time (s)



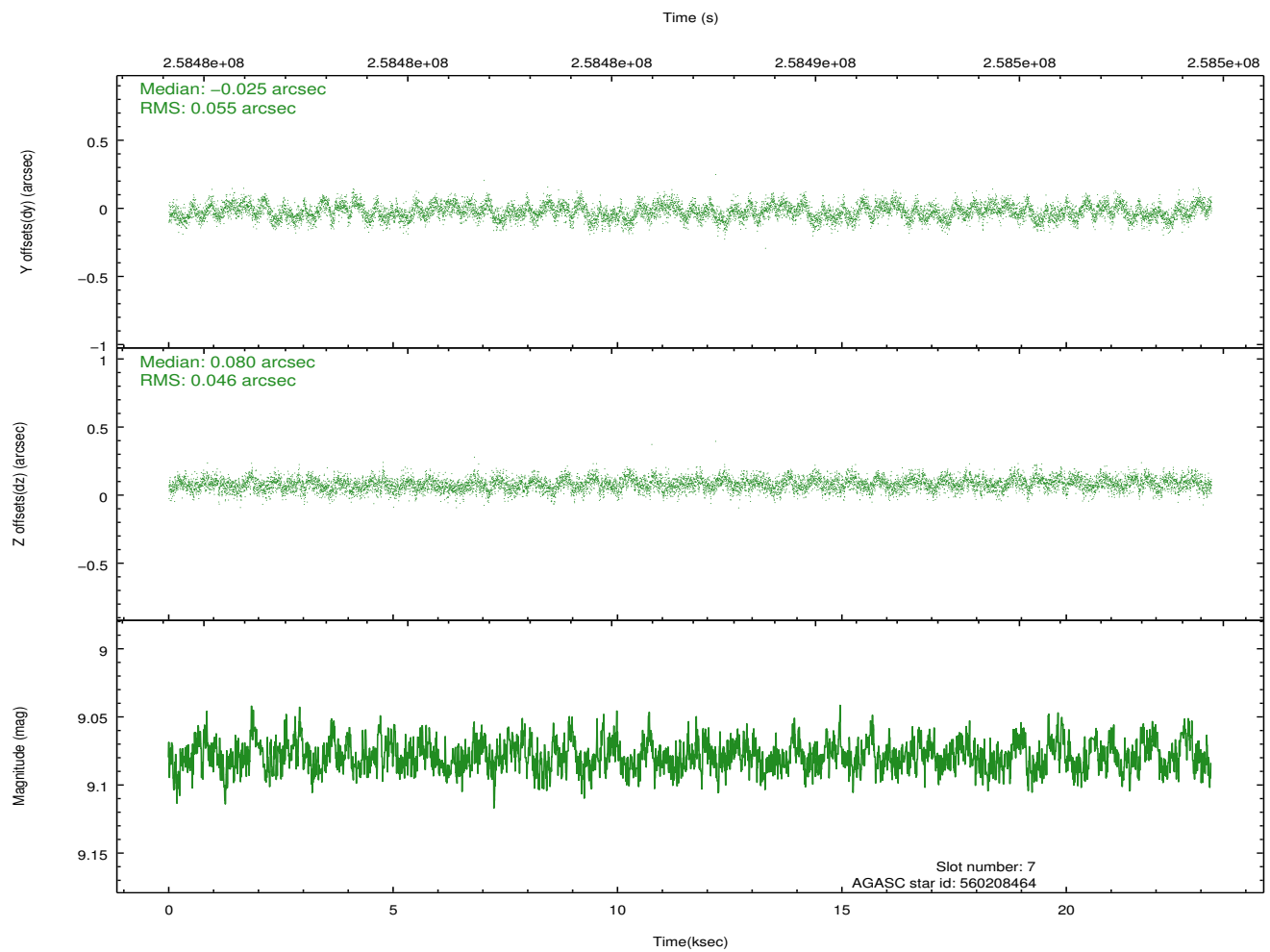
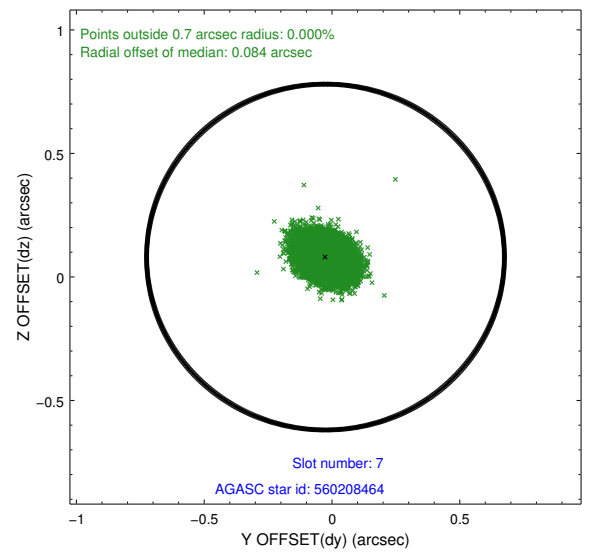
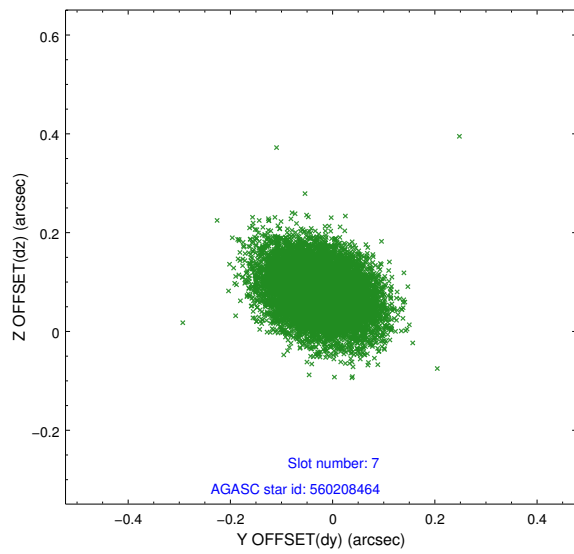
2.4.3 Slot 5



2.4.4 Slot 6

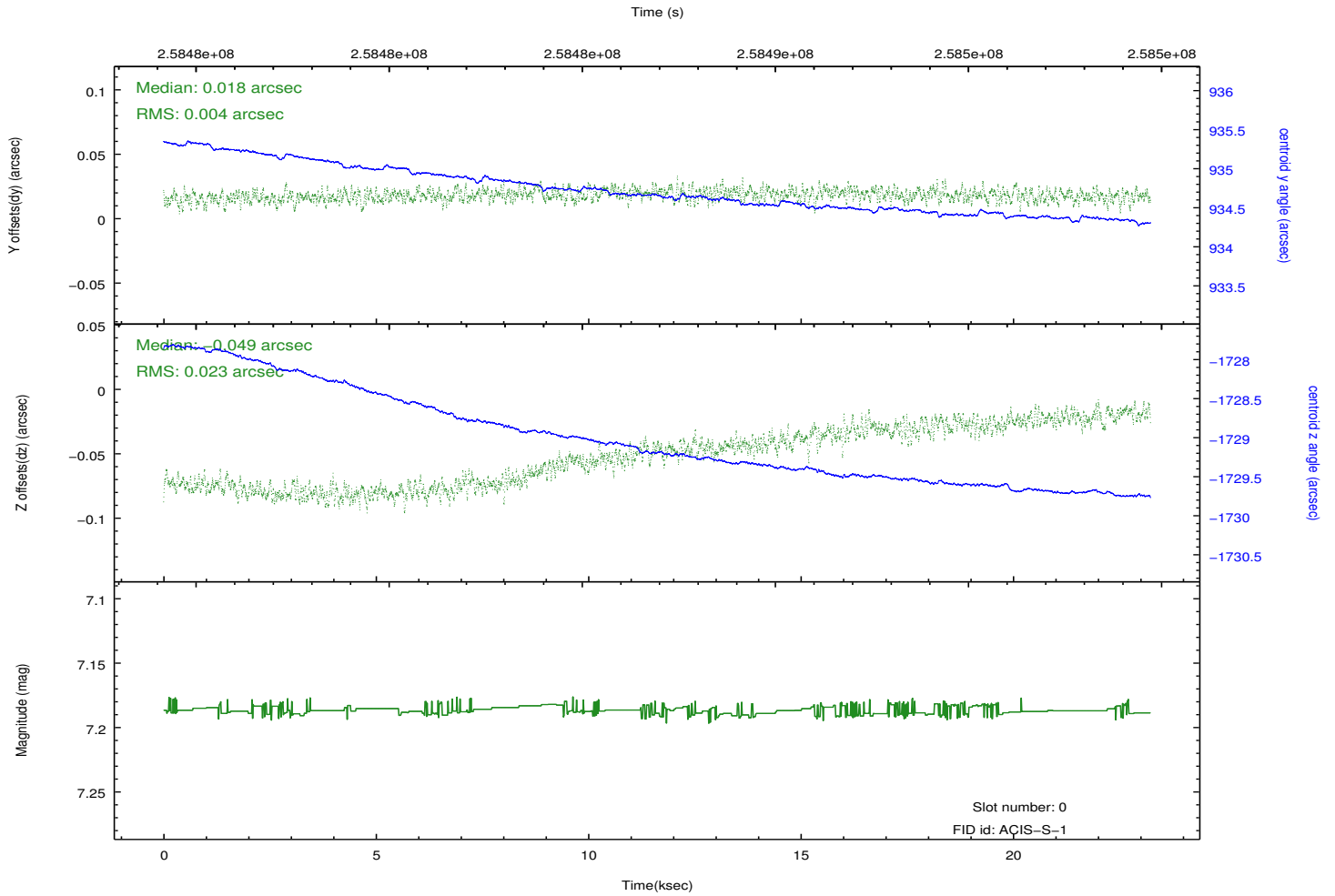
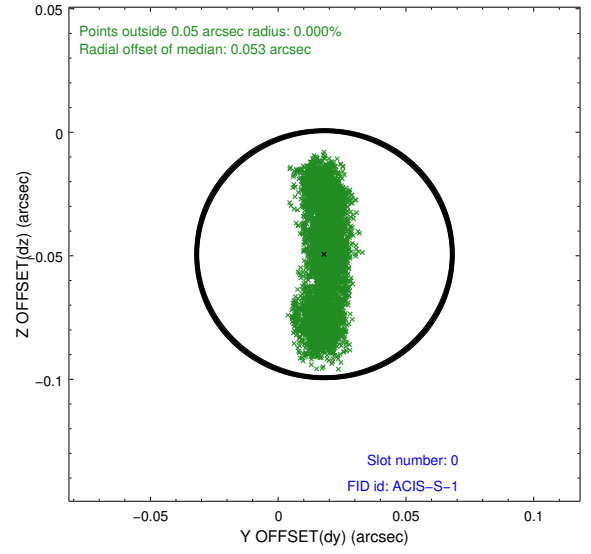
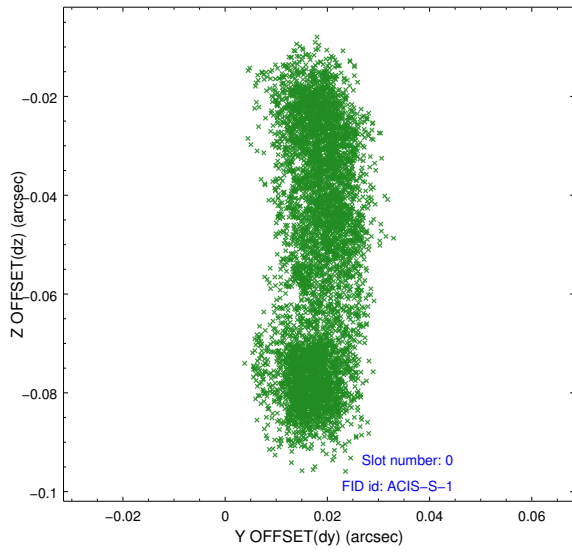


2.4.5 Slot 7

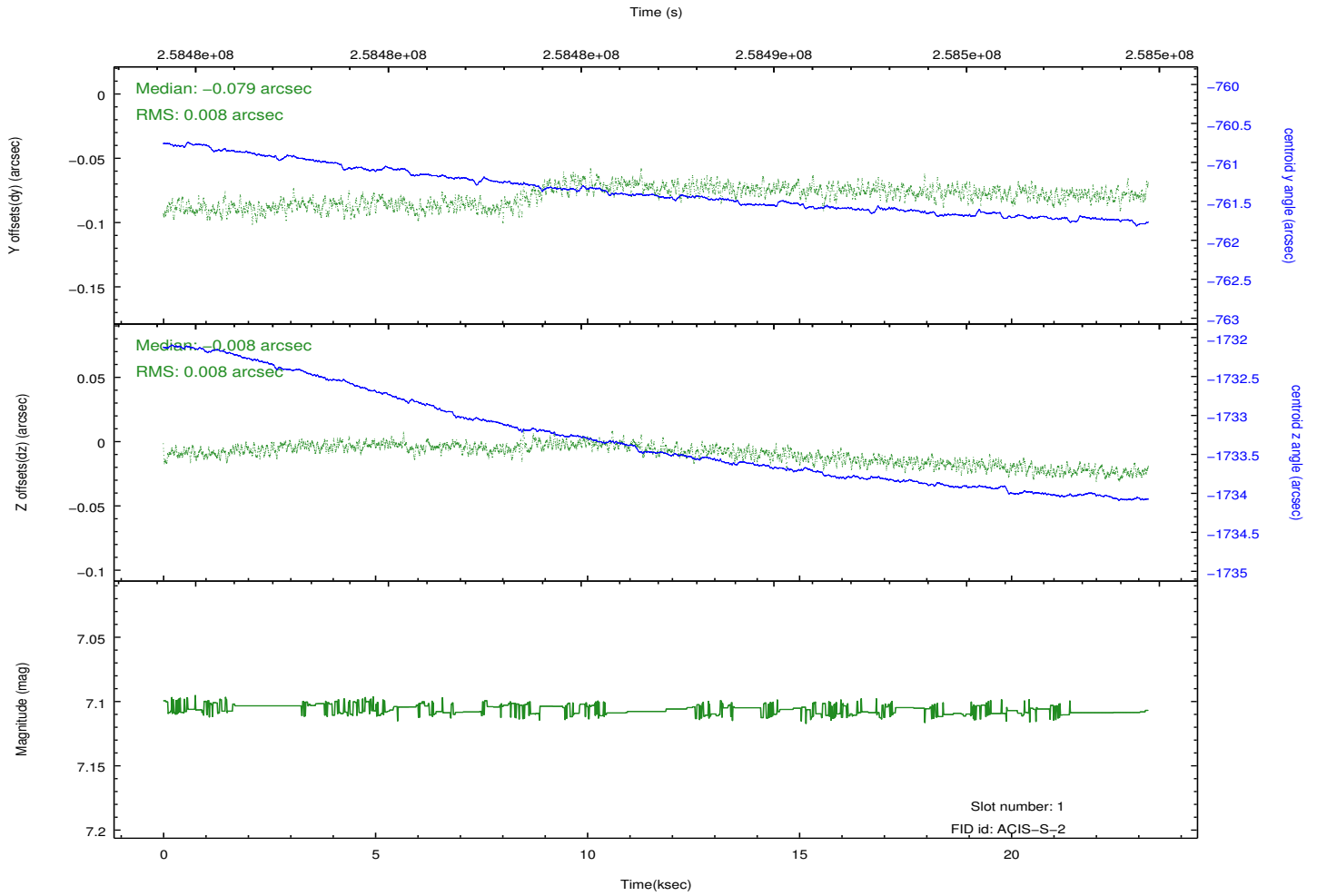
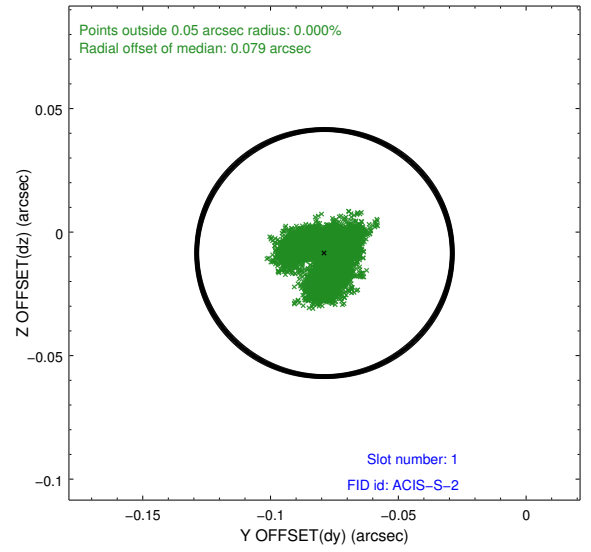
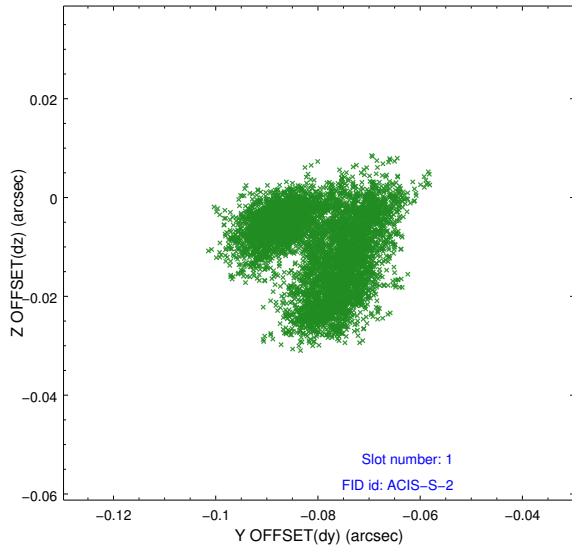


2.5 FID Slots

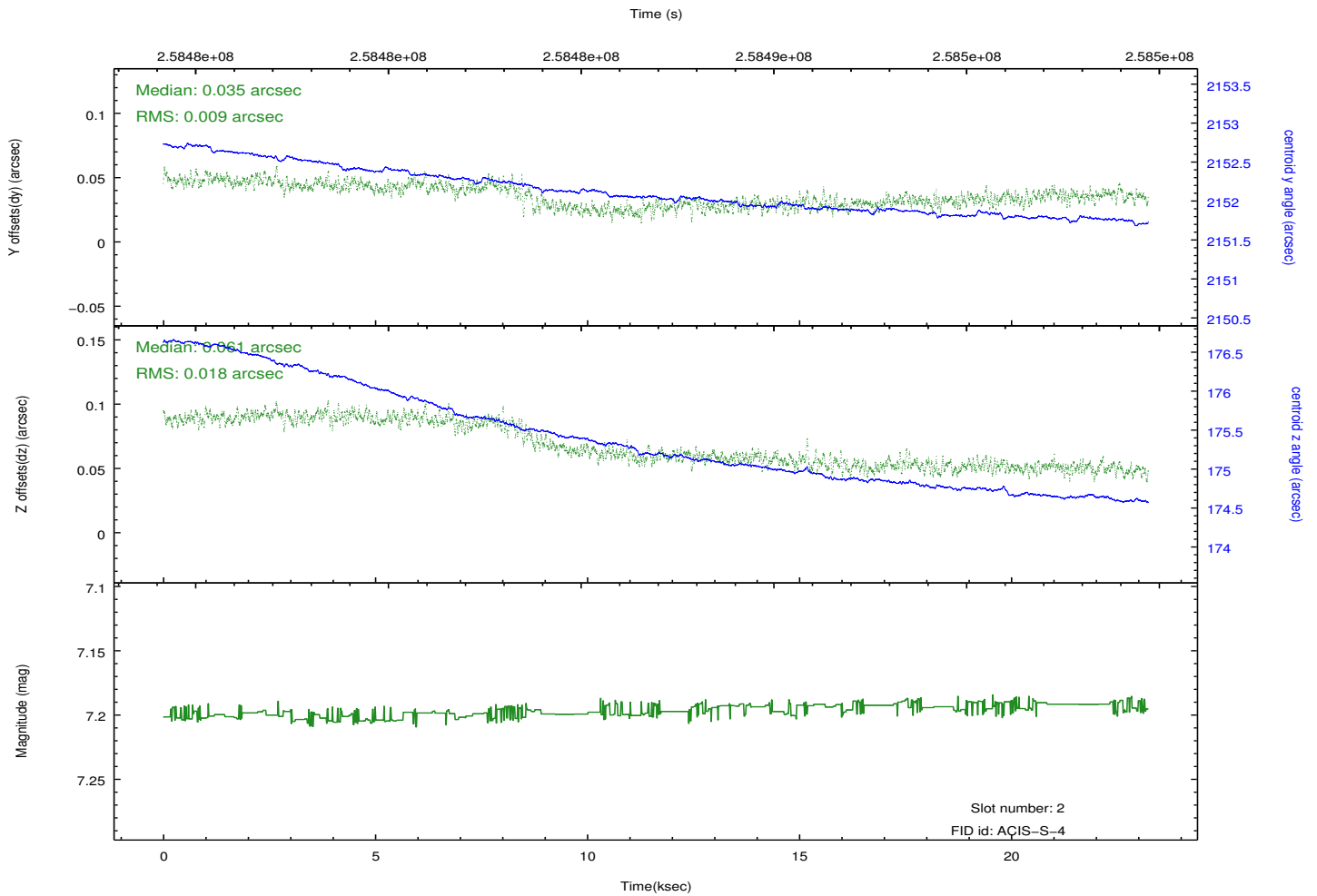
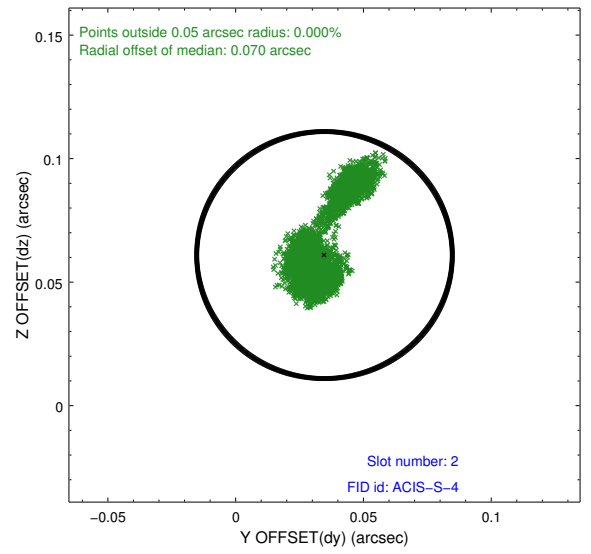
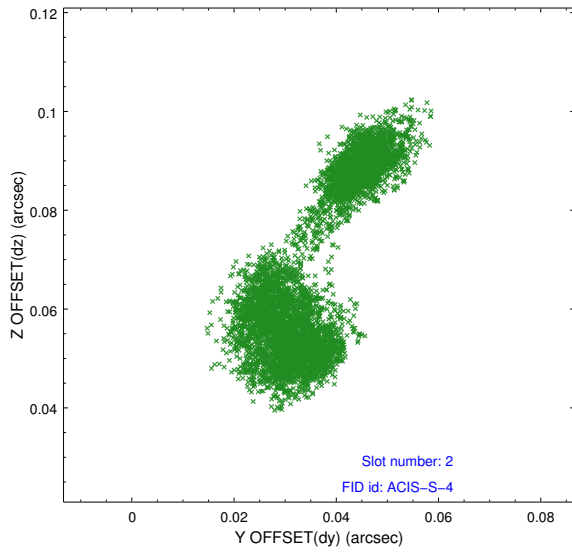
2.5.1 Slot 0



2.5.2 Slot 1



2.5.3 Slot 2



A Summary

A.1 Status

V&V Scientist	Jen Lauer
V&V Date (YYYY-MM-DD)	2012.03.29
V&V Edition	1
V&V Disposition and Status	OK
V&V Charge Time	22.9535999

A.2 Comments