

V&V Reference Report

L2 ASCDS Version : 8.4.3.1

Observation 6410 - L2 Version 2
Chandra X-Ray Center

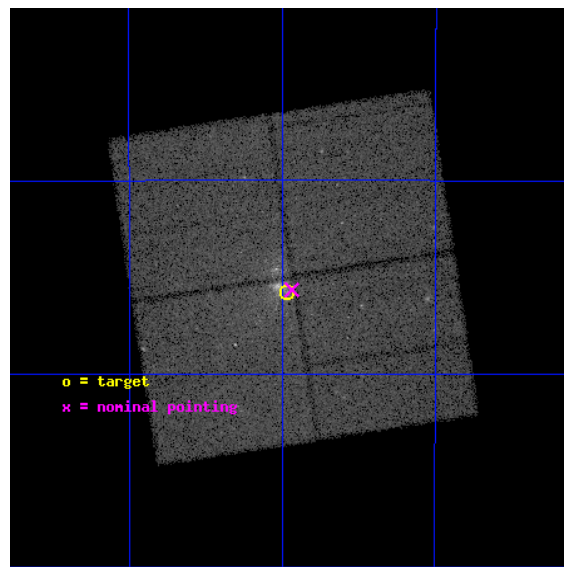
L2 Processing Date : Apr 8 2012

Contents

1	Front	2
2	OBI	3
2.1	OBI	3
2.1.1	Images	3
2.1.2	Bias	3
2.1.3	Parameters	4
2.1.4	Events	4
2.2	Compared Parameters	5
2.3	Aspect	6
2.4	Star Slots	9
2.4.1	Slot 3	9
2.4.2	Slot 4	10
2.4.3	Slot 5	11
2.4.4	Slot 6	12
2.5	FID Slots	13
2.5.1	Slot 0	13
2.5.2	Slot 1	14
2.5.3	Slot 2	15
A	Summary	16
A.1	Status	16
A.2	Comments	16

1 Front

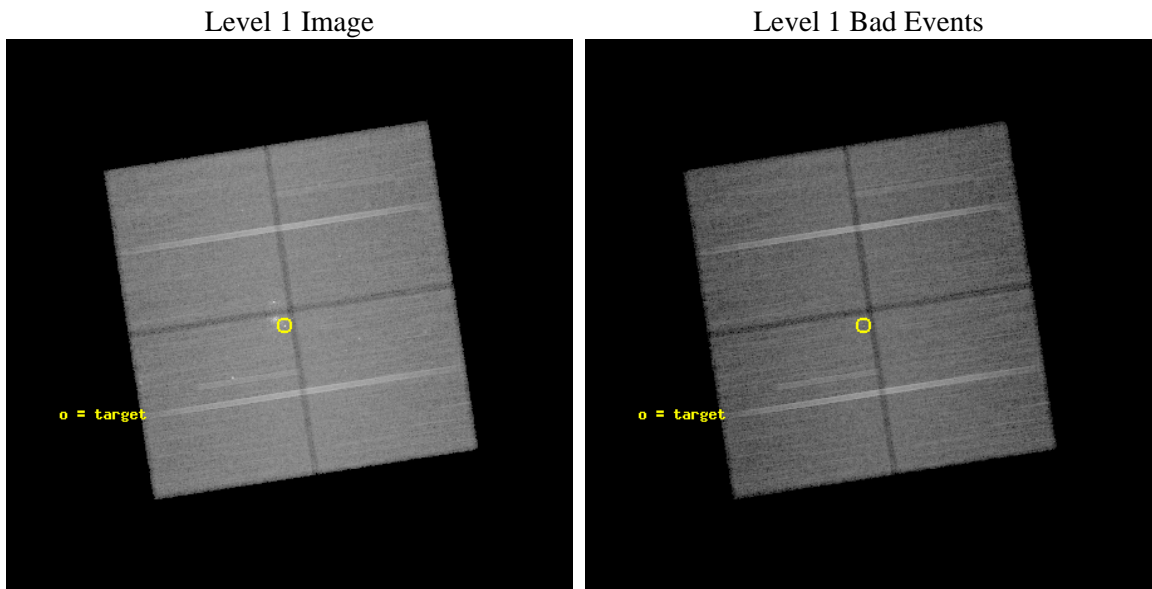
seq_num	200385	Sequence number
obs_id	6410	Observation id
title	Mapping the colliding wind region of the very massive binary WR20a	
observer	Prof. Gregor RAUW	Principal investigator
object	WR20a	Source name
dtcycle	0	
cycle	P	events from which exps? Prim/Second/Both
ra_targ	155.991667	Observer's specified target RA [deg]
dec_targ	-57.763611	Observer's specified target Dec [deg]
ra_nom	155.98424855435	Nominal RA [deg]
dec_nom	-57.761161438231	Nominal Dec [deg]
roll_nom	171.24277186231	Nominal Roll [deg]
revision	2	Processing version of data
ontime	50015.318454027	Sum of GTIs [s]
livetime	49361.831497684	Livetime [s]
ontime0	50018.459394515	Sum of GTIs [s]
ontime1	50018.459364593	Sum of GTIs [s]
ontime2	50015.318424225	Sum of GTIs [s]
ontime3	50015.318454027	Sum of GTIs [s]
l2events	214929	Number of level 2 events



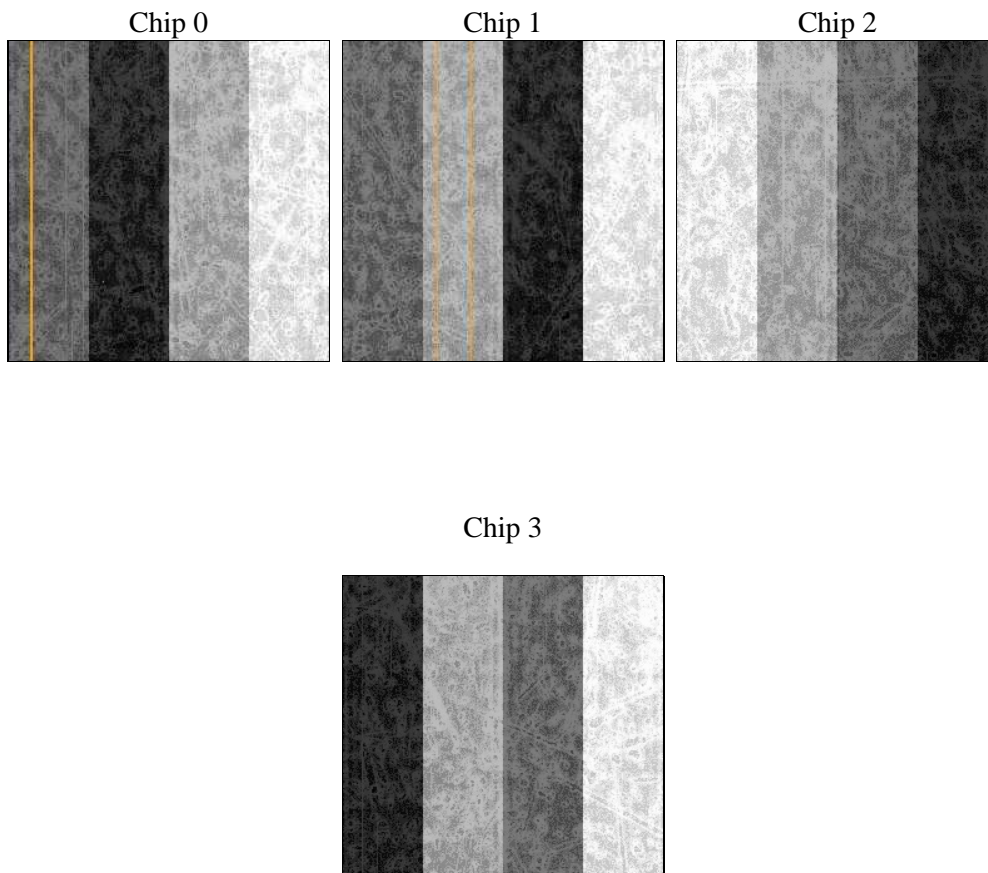
2 OBI

2.1 OBI

2.1.1 Images



2.1.2 Bias



2.1.3 Parameters

obi_num	0	Obi number	sched_exp_time	50000.000000	[s] Scheduled observation exposure time
ascdsver	8.4.3.1	Processing system revision	ontime	50015.318454027	Sum of GTIs [s]
caldsver	4.4.9	 	ontime0	50018.459394515	Sum of GTIs [s]
date	2012-04-08T19:45:15	Date and time of file creation	ontime1	50018.459364593	Sum of GTIs [s]
revision	2	Processing version of data	ontime2	50015.318424225	Sum of GTIs [s]
			ontime3	50015.318454027	Sum of GTIs [s]
			l1events	1772045	Number of level 1 events

2.1.4 Events

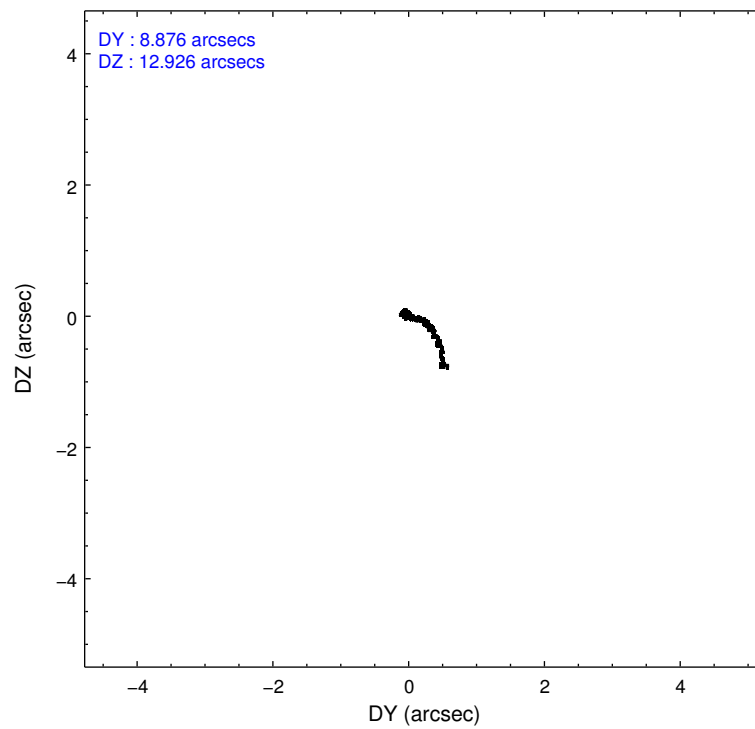
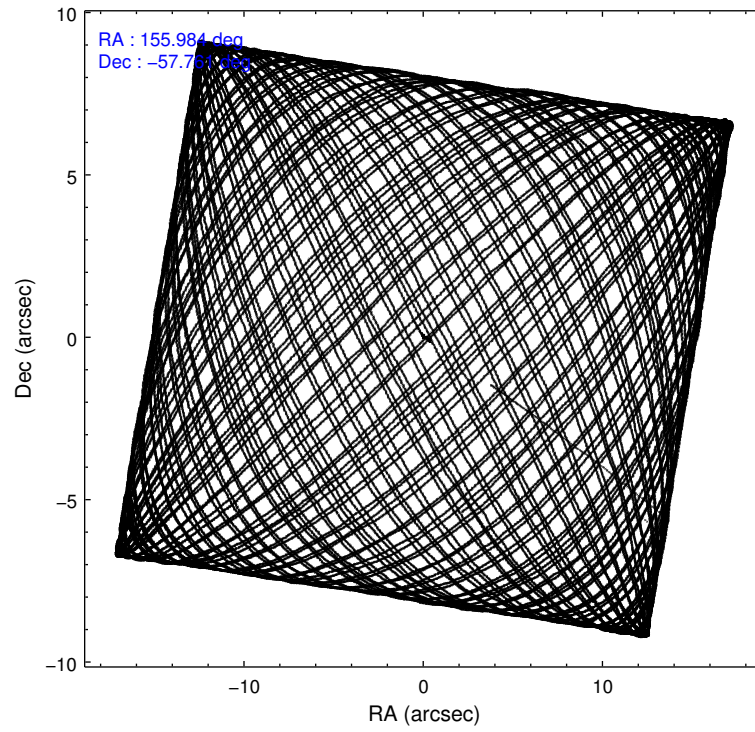
	ccd 0	ccd 1	ccd 2	ccd 3
level 1 events	417639	427337	464307	462762
rejected events	360238	363325	406800	394319
rejected %	86%	85%	87%	85%

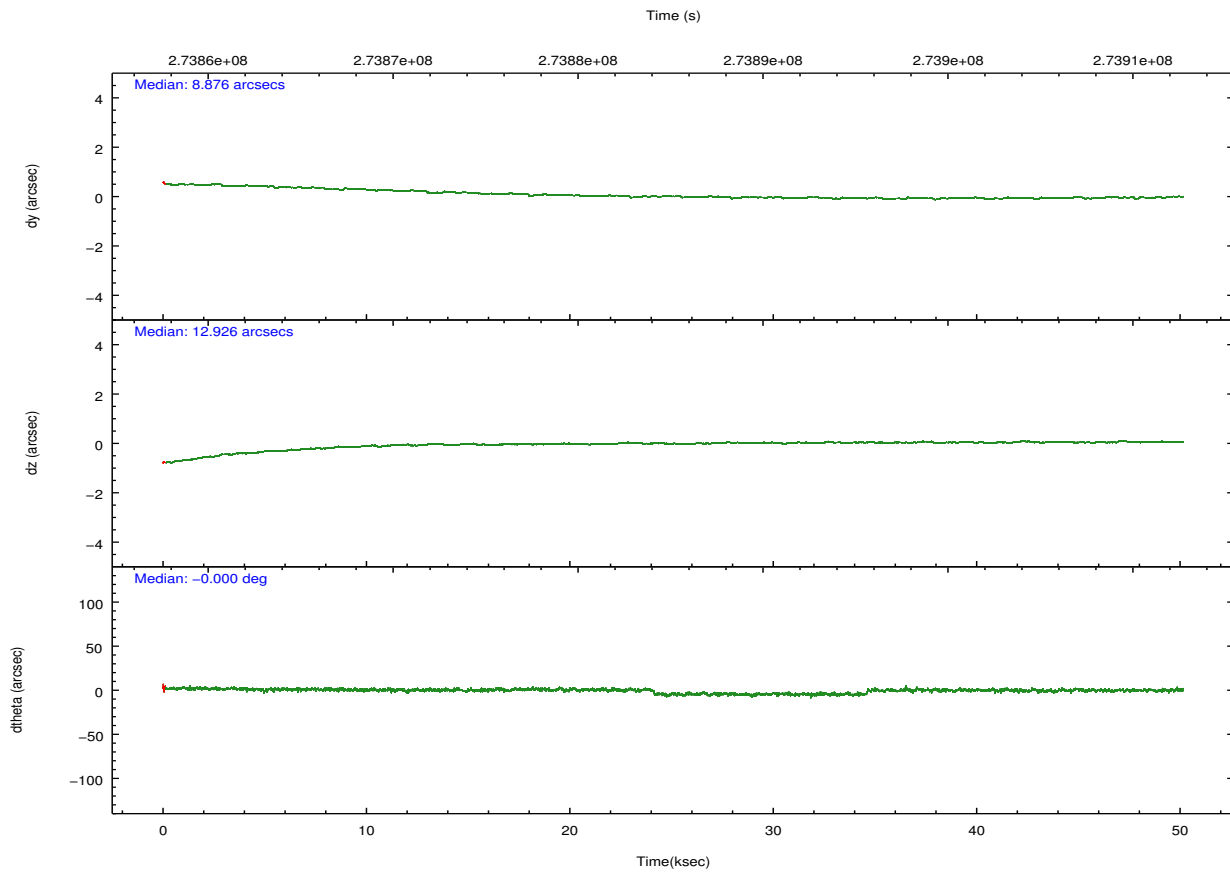
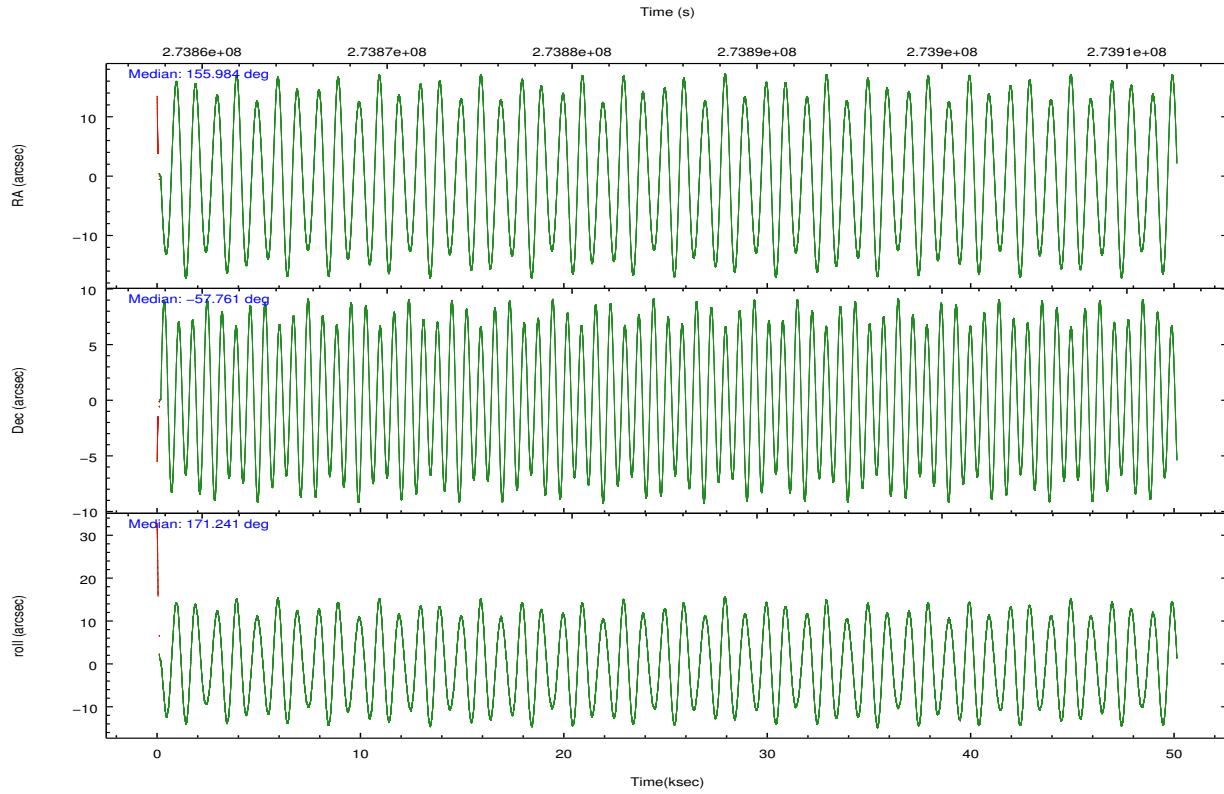
	ccd 0	ccd 1	ccd 2	ccd 3
grade 0 events	26198	28803	28086	36555
	6%	6%	6%	7%
grade 1 events	246	278	343	401
	0%	0%	0%	0%
grade 2 events	12467	13866	11906	12263
	2%	3%	2%	2%
grade 3 events	5524	5725	5147	5693
	1%	1%	1%	1%
grade 4 events	5042	5699	5163	5652
	1%	1%	1%	1%
grade 5 events	17808	19531	17298	20878
	4%	4%	3%	4%
grade 6 events	9530	11483	8680	9738
	2%	2%	1%	2%
grade 7 events	340824	341952	387684	371582
	81%	80%	83%	80%

2.2 Compared Parameters

Parameter	Planned	Actual	Parameter	Planned	Actual
Instrument	ACIS	ACIS	Obspar format version number	7	7
Detector	ACIS-0123	ACIS-0123	Obspar file type	PREDICTED	ACTUAL
Grating	NONE	NONE	Obspar update status	NONE	UPDATED
Data mode	FAINT	FAINT	Number of optional ACIS chips dropped	0	0
Observation mode	POINTING	POINTING	On-chip summing requested	N	N
[deg] Pointing RA	156.032019	155.9842485543506	Subarray requested	NONE	NONE
[deg] Pointing Dec	-57.751140	-57.76116143823102	Alternating exposures requested	N	N
[deg] Pointing Roll	171.074488	171.2427718623138	[s] Primary exposure time	0.000000	3.1
[mm] SIM focus pos	-0.782348	-0.7809083437167272			
[mm] SIM defocus	0	0.001439871863259334			
[mm] SIM translation stage pos	-233.592463	-233.5874344608287			
[mm] SIM translation stage offset	0	-0.005018542100998502			
Phase constraints	Y	Y			
[d] Phase period	3.686000	3.686000			
[d] Phase epoch (MJD)	53124.069000	53124.069000			
Phase start	0.200000	0.200000			
Phase end	0.350000	0.350000			
Phase start error	0.030000	0.030000			
Phase end error	0.030000	0.030000			
[s] Observation start time (MET)	273860206.184000	273858721.73919			
Observation start date	2006-09-05T16:15:41	2006-09-05T15:52:01			
[s] Observation end time (MET)	273910206.184000	273911362.15417			
Observation end date	2006-09-06T06:09:01	2006-09-06T06:29:22			
Read mode	TIMED	TIMED			

2.3 Aspect



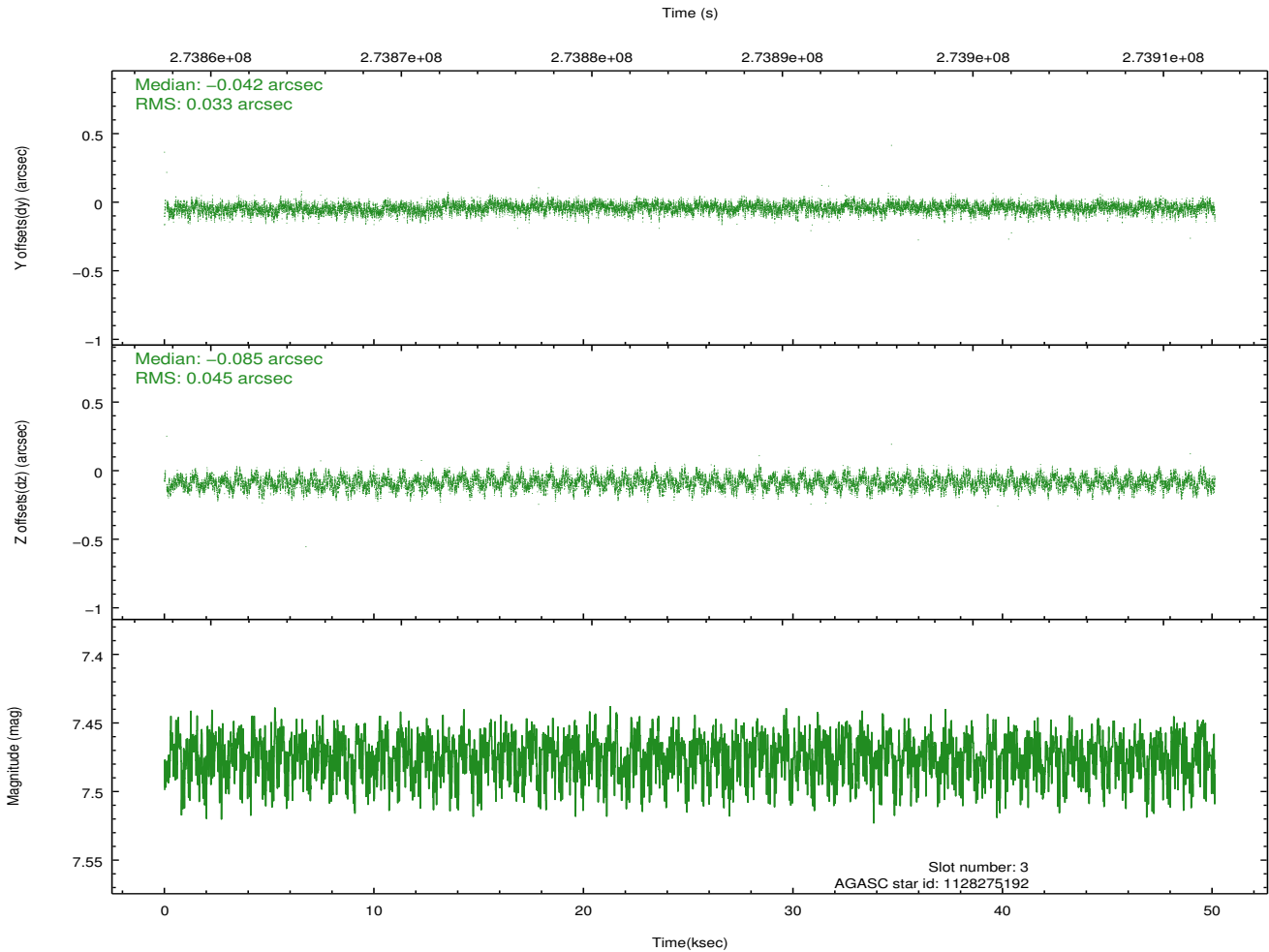
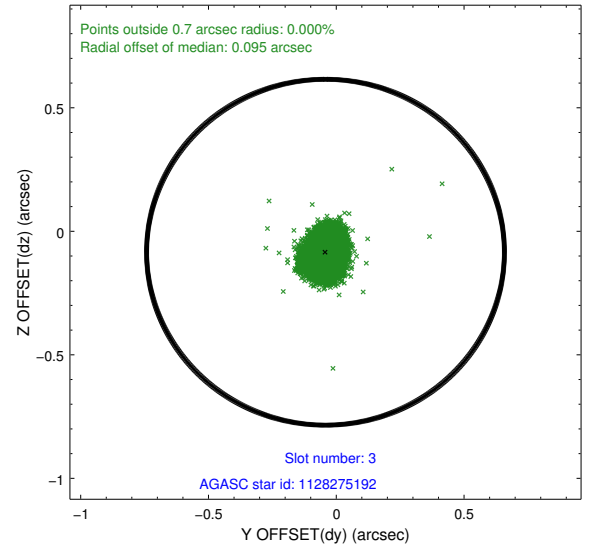
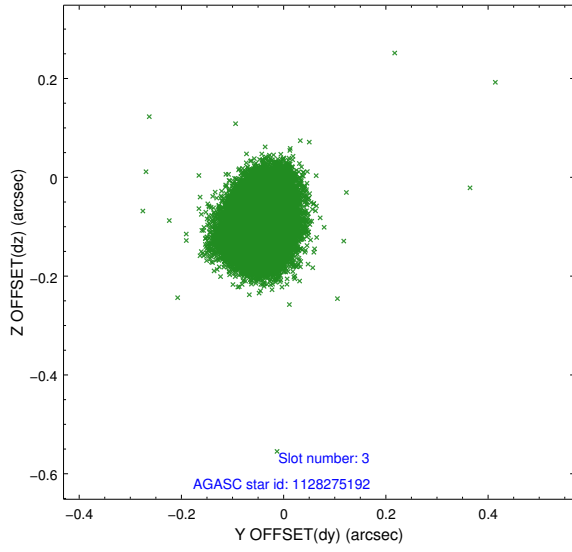


Slot Statistics

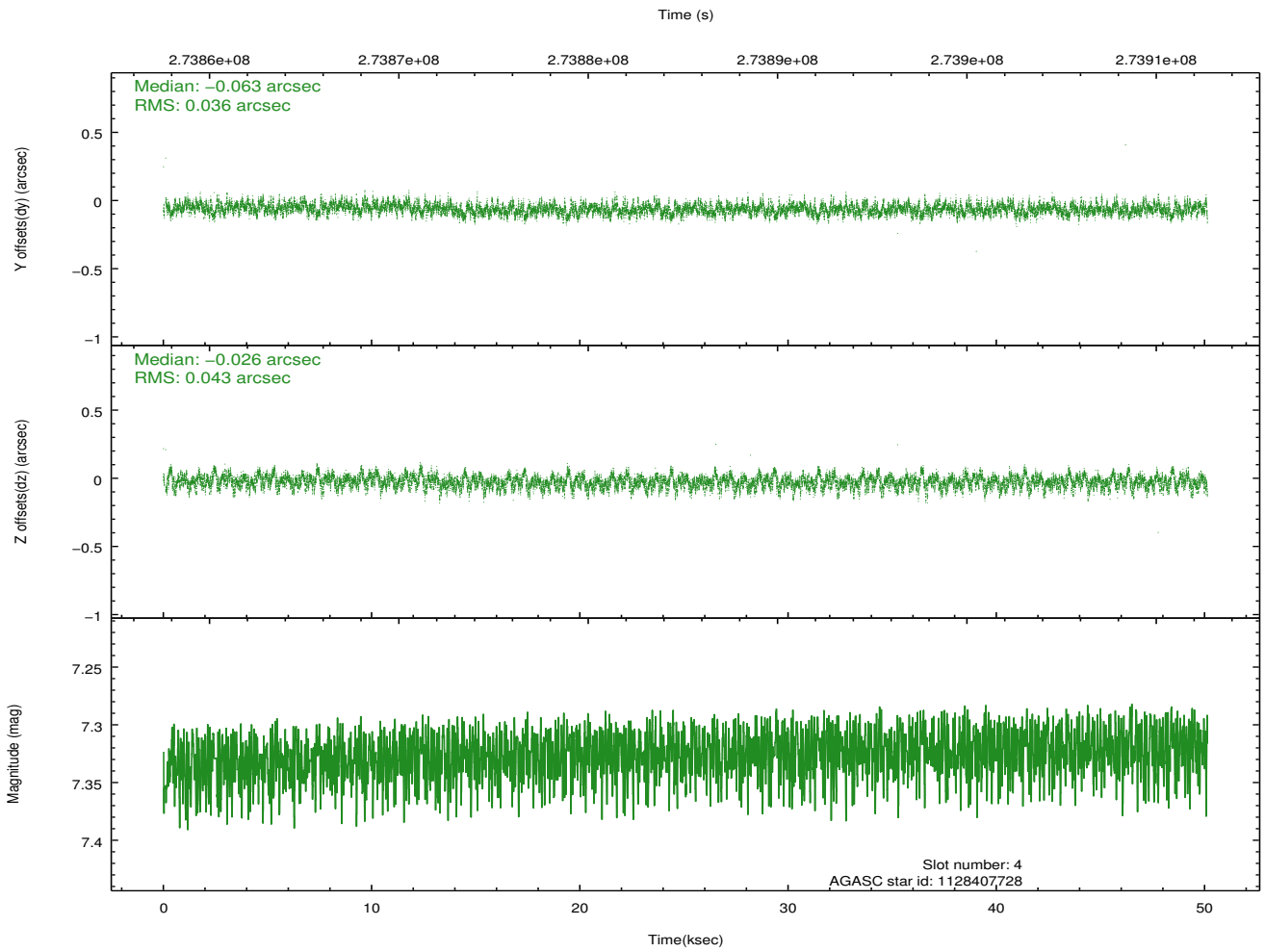
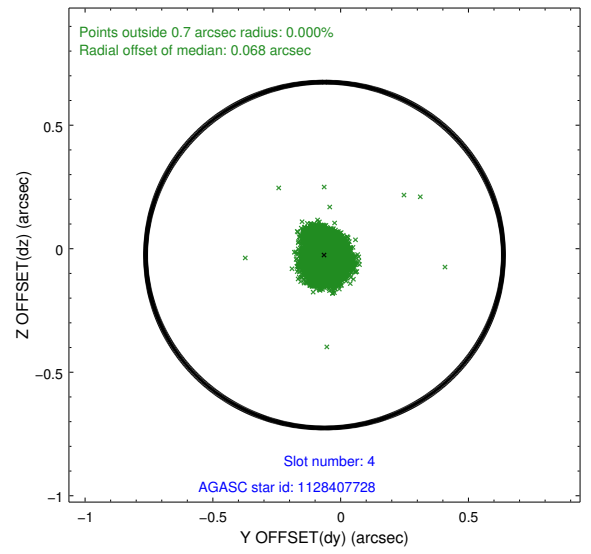
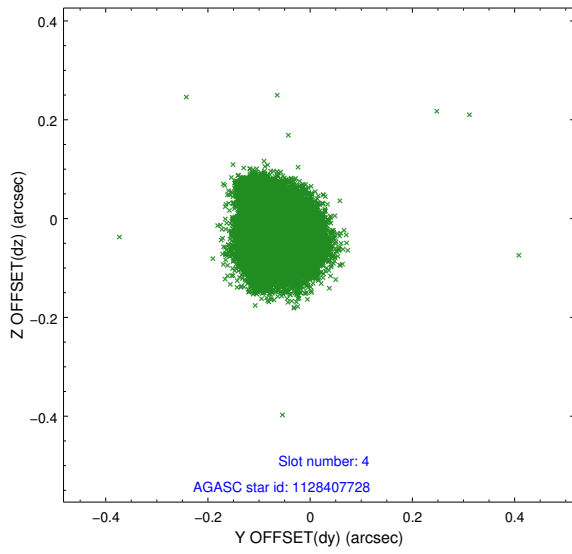
	status	id	mag	n_pts	med_dy	med_dz	dr1
	FID	ACIS-I-1	7.24	12215	-0.040	0.044	0.016
	FID	ACIS-I-2	7.14	12211	-0.178	-0.087	0.010
	FID	ACIS-I-4	7.18	12215	0.120	0.110	0.016
	GUIDE	1128275192	7.47	24428	-0.042	-0.085	0.059
	GUIDE	1128407728	7.33	24427	-0.063	-0.026	0.060
	GUIDE	1128273656	7.66	24428	0.098	0.091	0.053
	GUIDE	1128406664	7.18	24426	0.004	0.021	0.062
0.000	0.000	0.000	0.000000	0.000000	0.00	0.00	

2.4 Star Slots

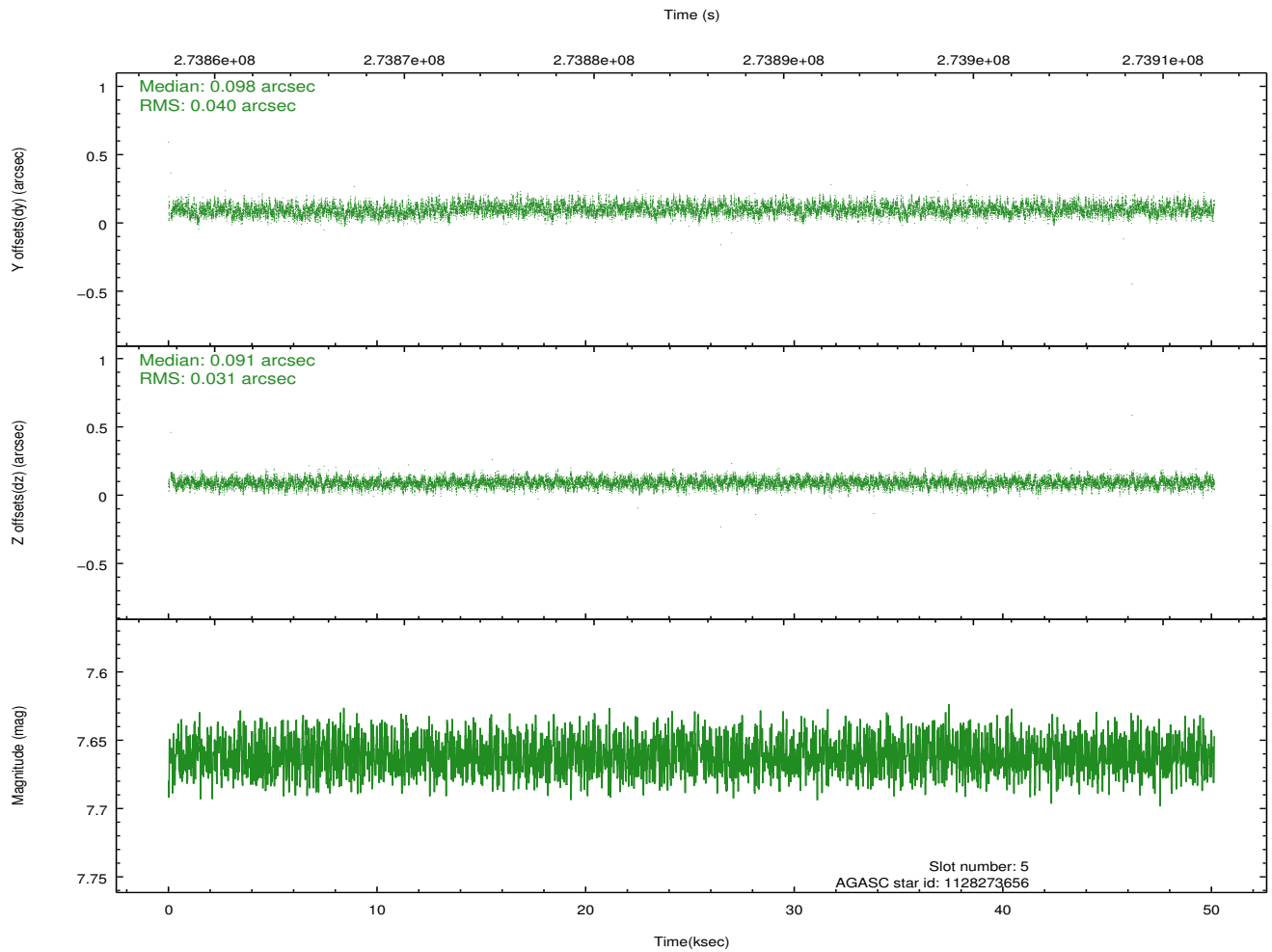
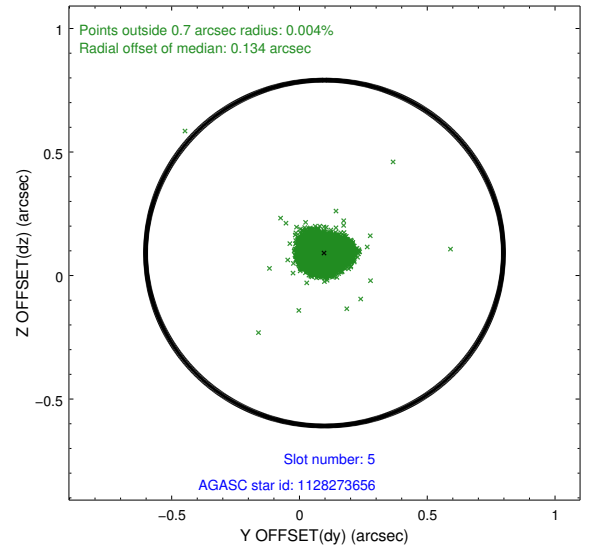
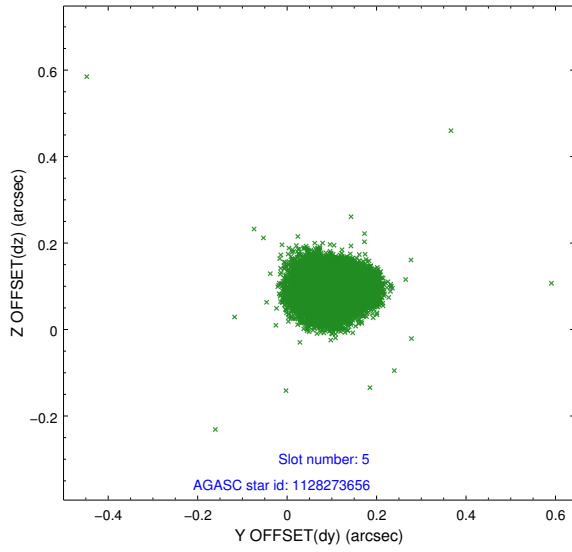
2.4.1 Slot 3



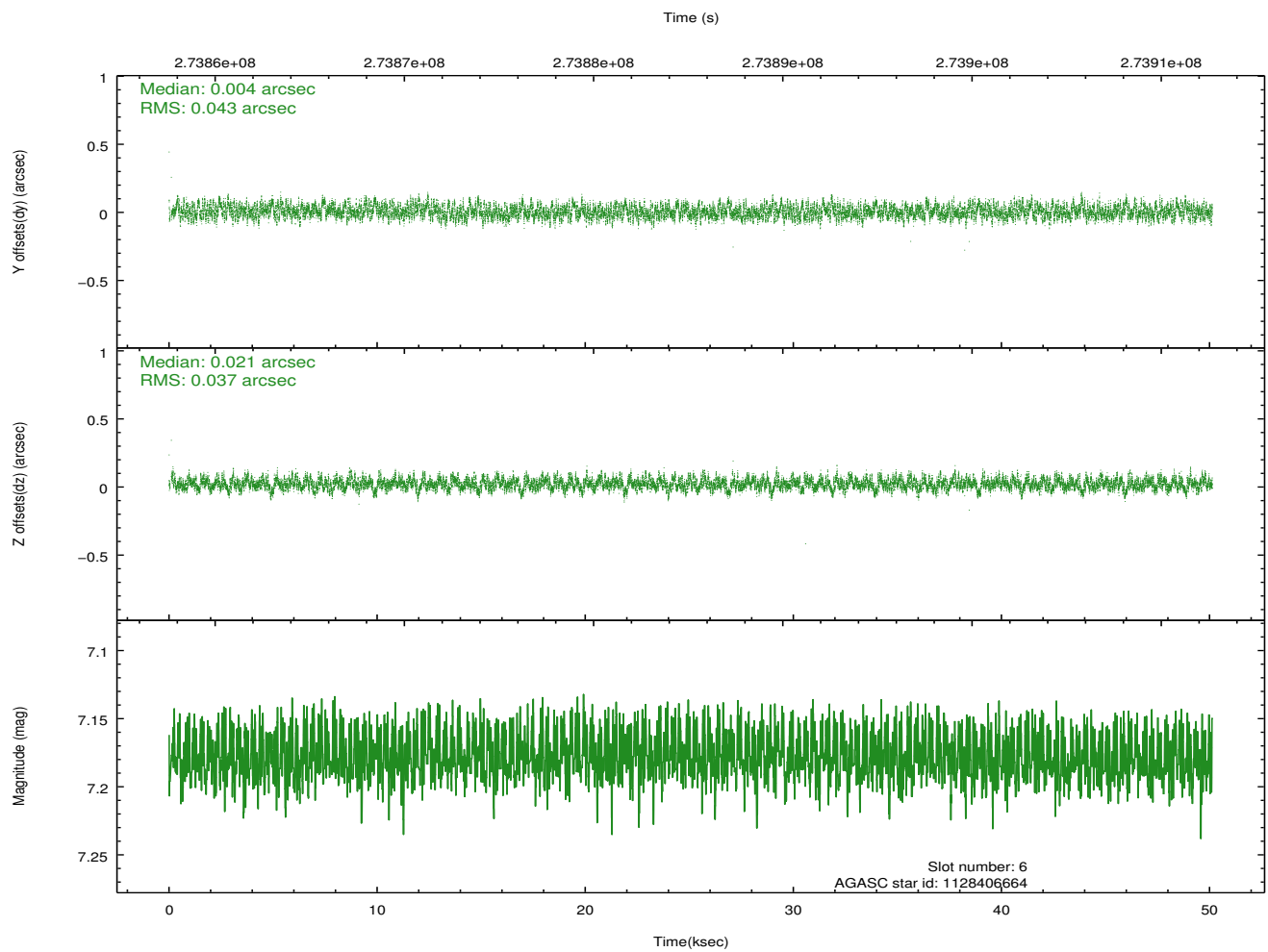
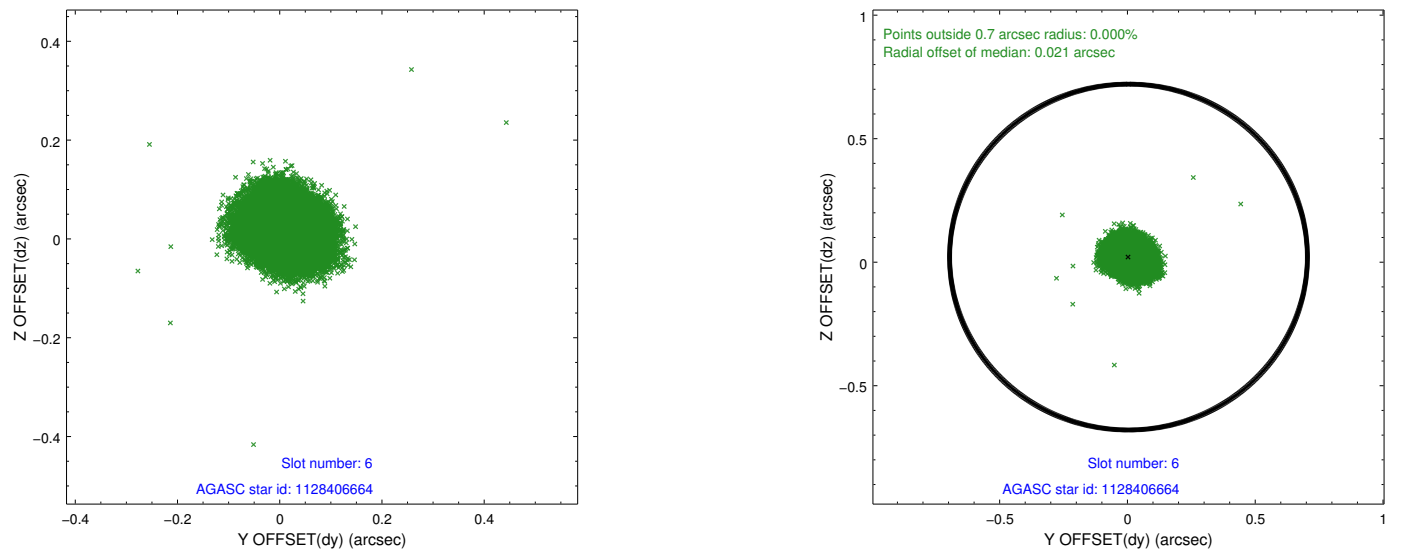
2.4.2 Slot 4



2.4.3 Slot 5

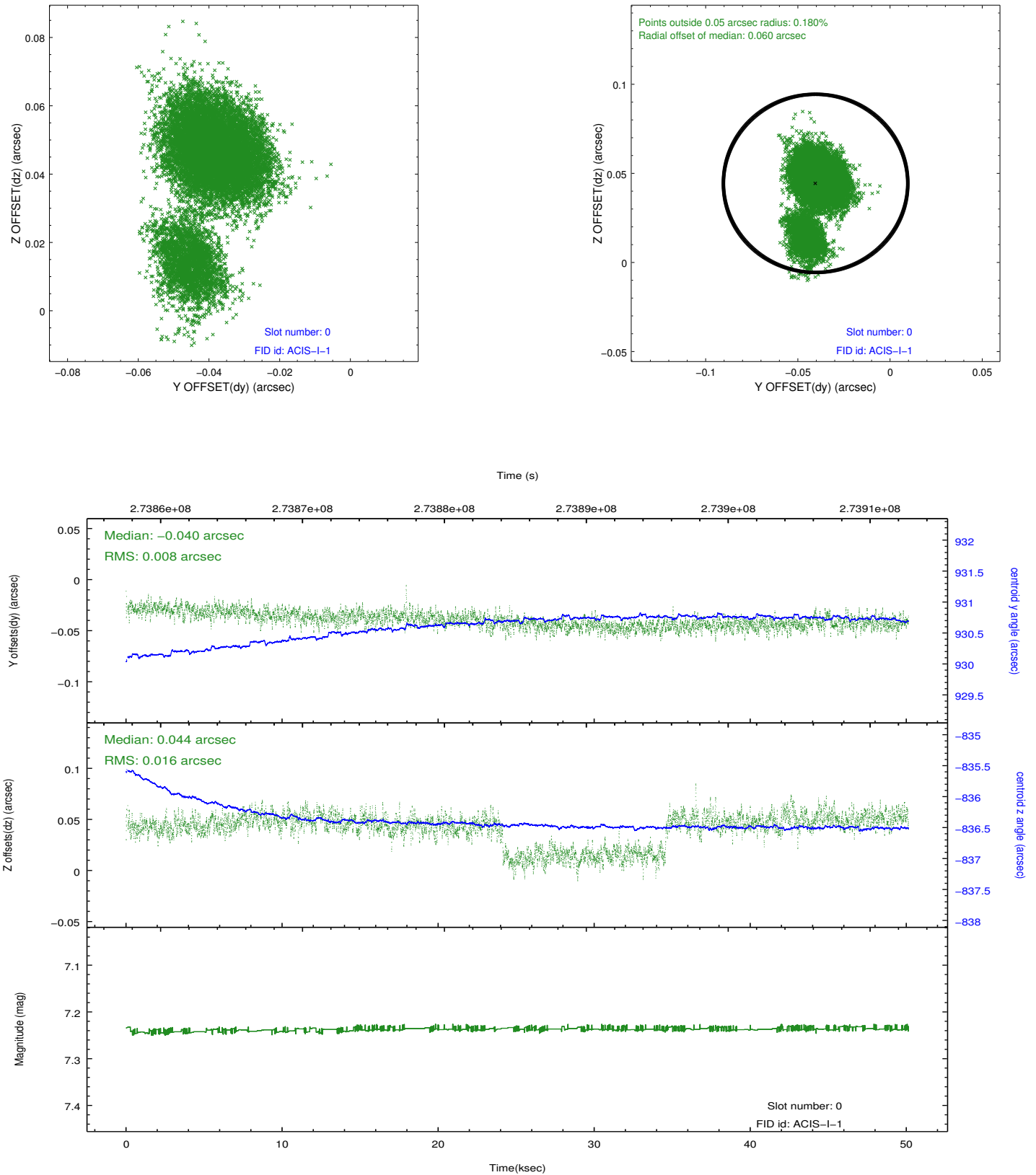


2.4.4 Slot 6

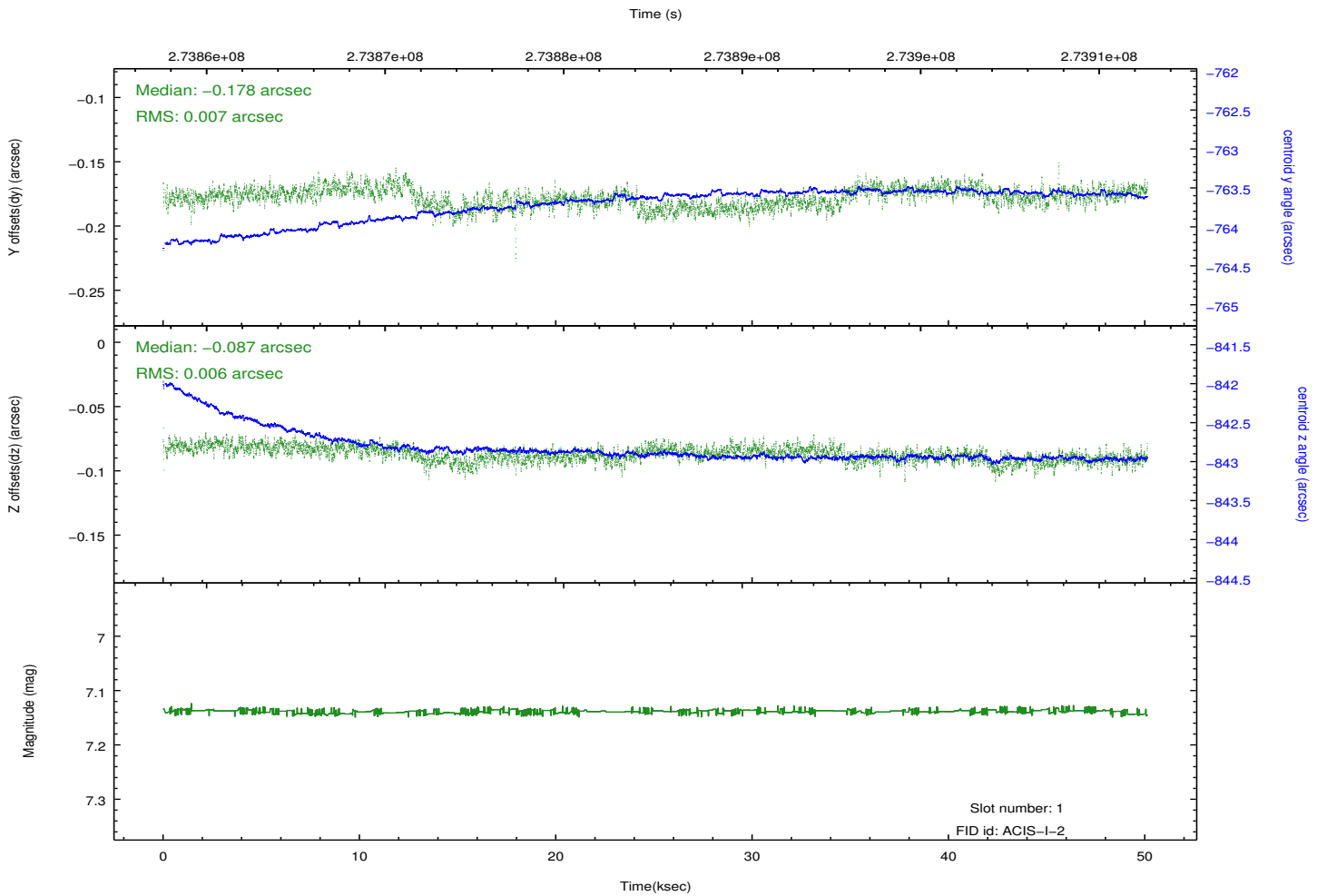
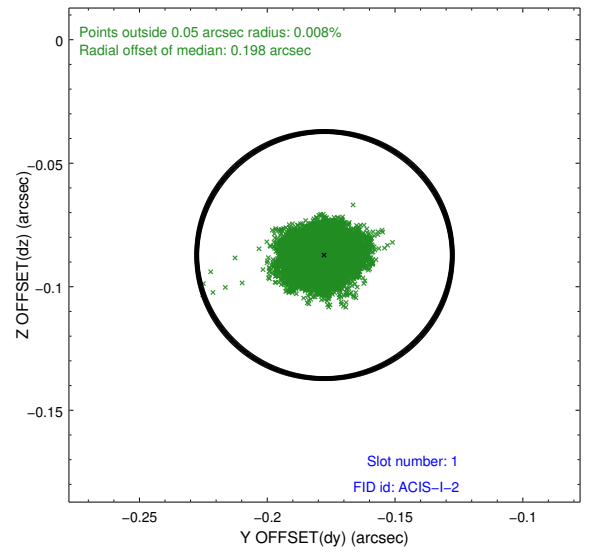
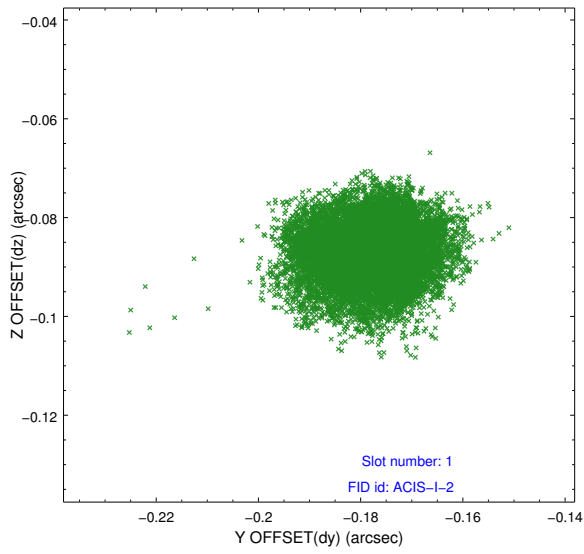


2.5 FID Slots

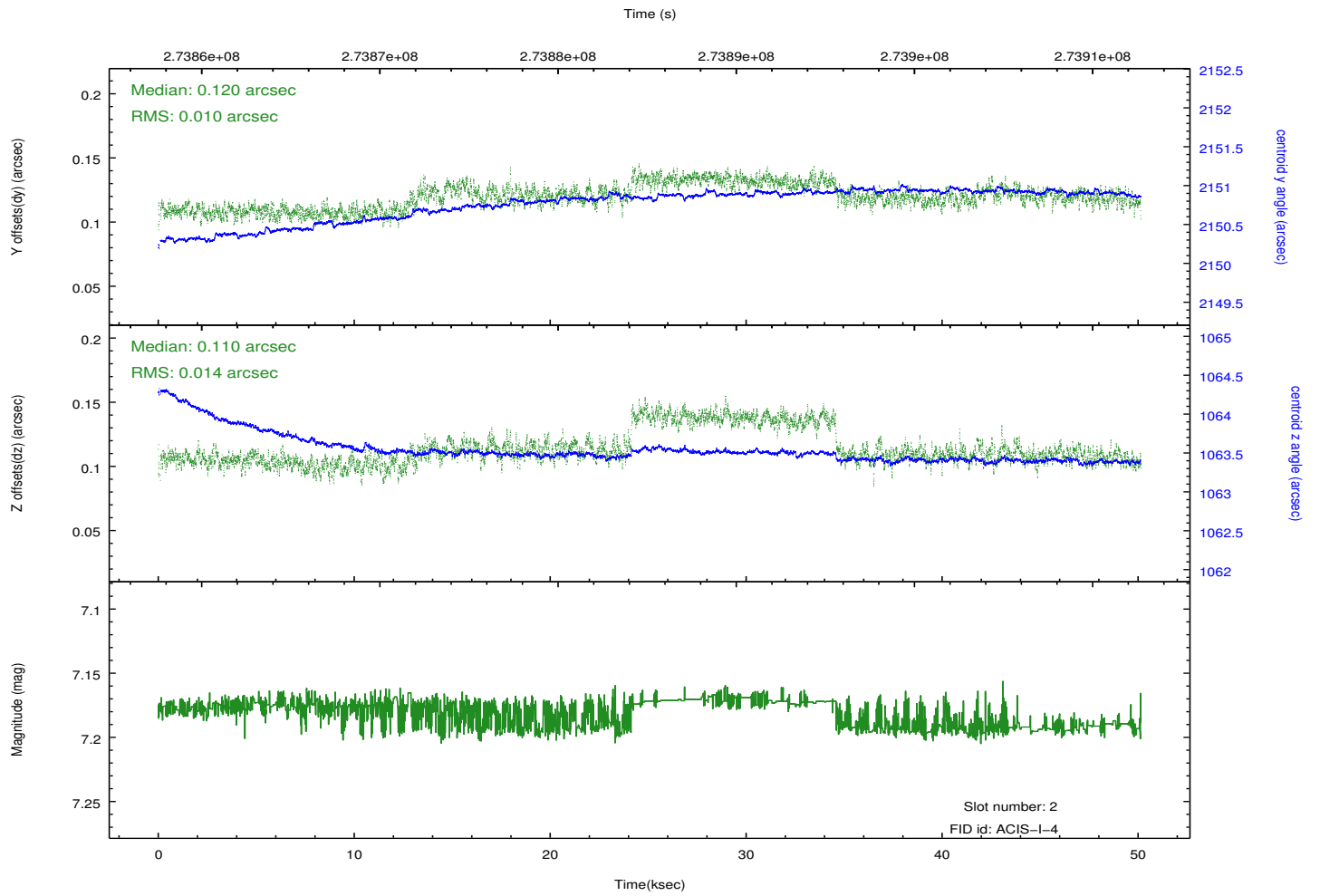
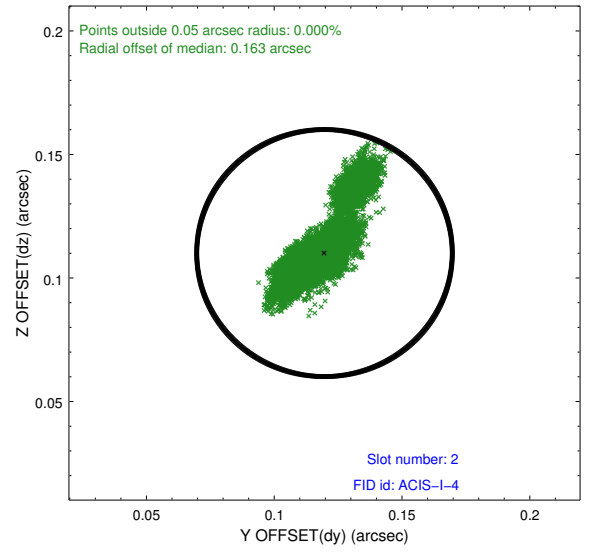
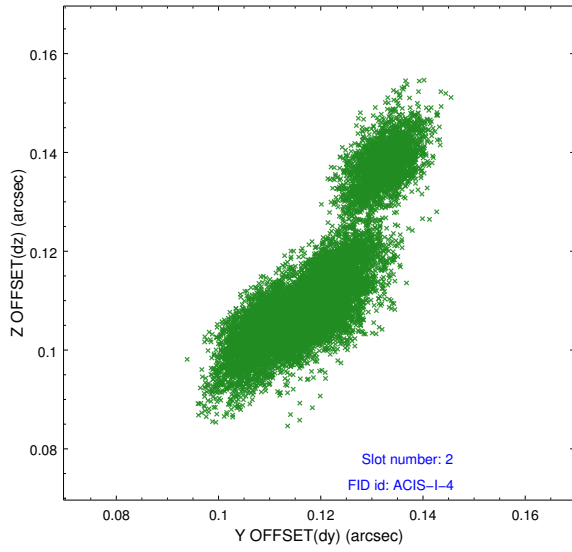
2.5.1 Slot 0



2.5.2 Slot 1



2.5.3 Slot 2



A Summary

A.1 Status

V&V Scientist	Beth Sundheim
V&V Date (YYYY-MM-DD)	2012.04.09
V&V Edition	1
V&V Disposition and Status	OK
V&V Charge Time	50.0153184

A.2 Comments

Phase constraint satisfied.