

V&V Reference Report

L2 ASCDS Version : 8.4.3.1

Observation 6790 - L2 Version 2
Chandra X-Ray Center

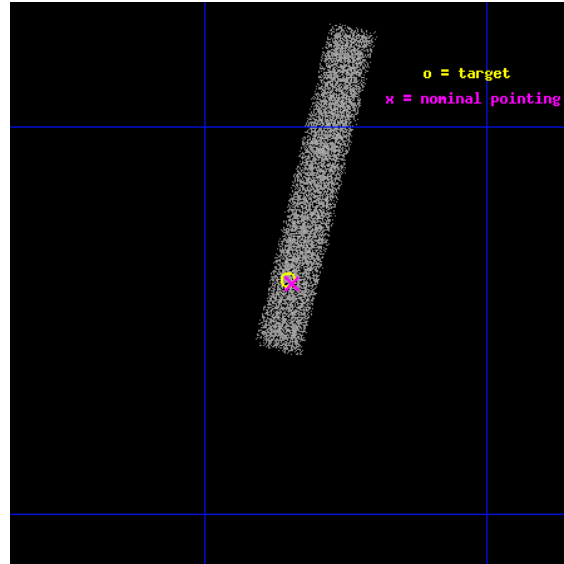
L2 Processing Date : Apr 12 2012

Contents

1	Front	2
2	OBI	3
2.1	OBI	3
2.1.1	Images	3
2.1.2	Bias	3
2.1.3	Parameters	4
2.1.4	Events	4
2.2	Compared Parameters	5
2.3	Aspect	6
2.4	Star Slots	9
2.4.1	Slot 3	9
2.4.2	Slot 4	10
2.4.3	Slot 5	11
2.4.4	Slot 6	12
2.4.5	Slot 7	13
2.5	FID Slots	14
2.5.1	Slot 0	14
2.5.2	Slot 1	15
2.5.3	Slot 2	16
A	Summary	17
A.1	Status	17
A.2	Comments	17

1 Front

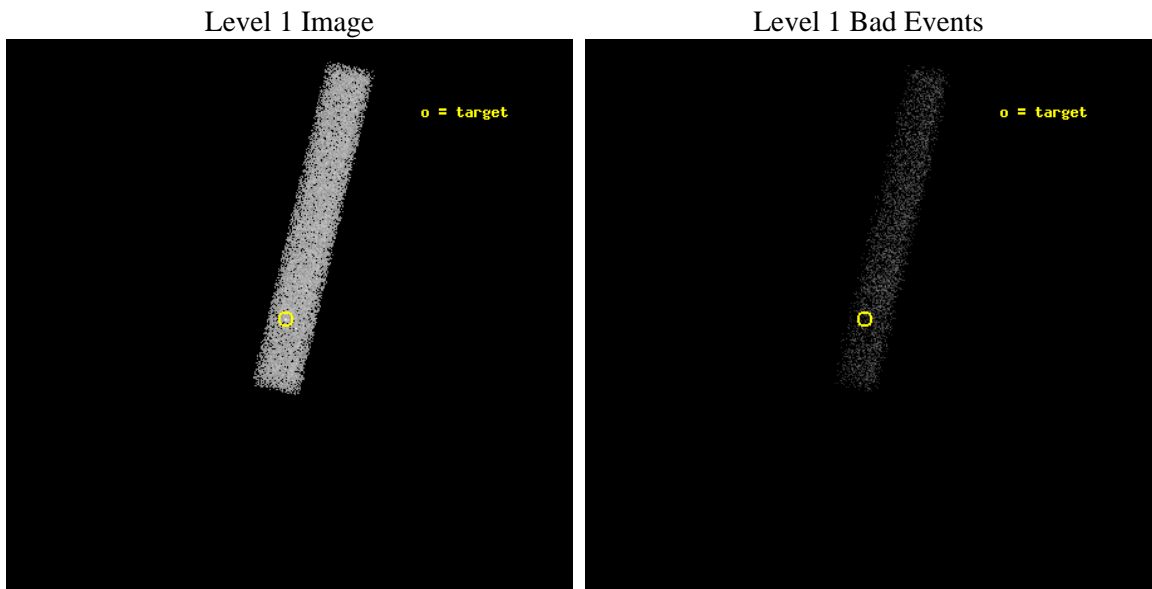
seq_num	701208	Sequence number
obs_id	6790	Observation id
title	Active Galactic Nuclei in nearby galaxies: a new view of the origin of the radio-loud radio-quiet dichotomy?	Proposal title
observer	Dr. Alessandro Capetti	Principal investigator
object	UGC12759	Source name
dtcycle	0	
cycle	P	events from which exps? Prim/Second/Both
ra_targ	356.087917	Observer's specified target RA [deg]
dec_targ	9.934167	Observer's specified target Dec [deg]
ra_nom	356.08654034362	Nominal RA [deg]
dec_nom	9.9325415082418	Nominal Dec [deg]
roll_nom	283.26771421593	Nominal Roll [deg]
revision	2	Processing version of data
ontime	15187.599094748	Sum of GTIs [s]
livetime	13774.350711725	Livetime [s]
ontime7	15187.599094748	Sum of GTIs [s]
l2events	11469	Number of level 2 events



2 OBI

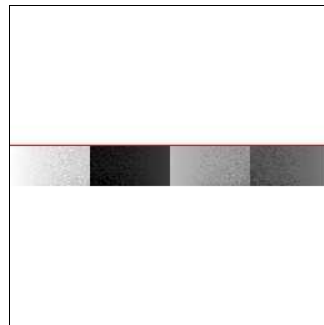
2.1 OBI

2.1.1 Images



2.1.2 Bias

Chip 7



2.1.3 Parameters

obi_num	0	Obi number	sched_exp_time	15000.000000	[s] Scheduled observation exposure time
ascdsver	8.4.3.1	Processing system revision	ontime	15187.599094748	Sum of GTIs [s]
caldbver	4.4.9	 	ontime7	15187.599094748	Sum of GTIs [s]
date	2012-04-13T00:41:05	Date and time of file creation	l1events	26802	Number of level 1 events
revision	2	Processing version of data			

2.1.4 Events

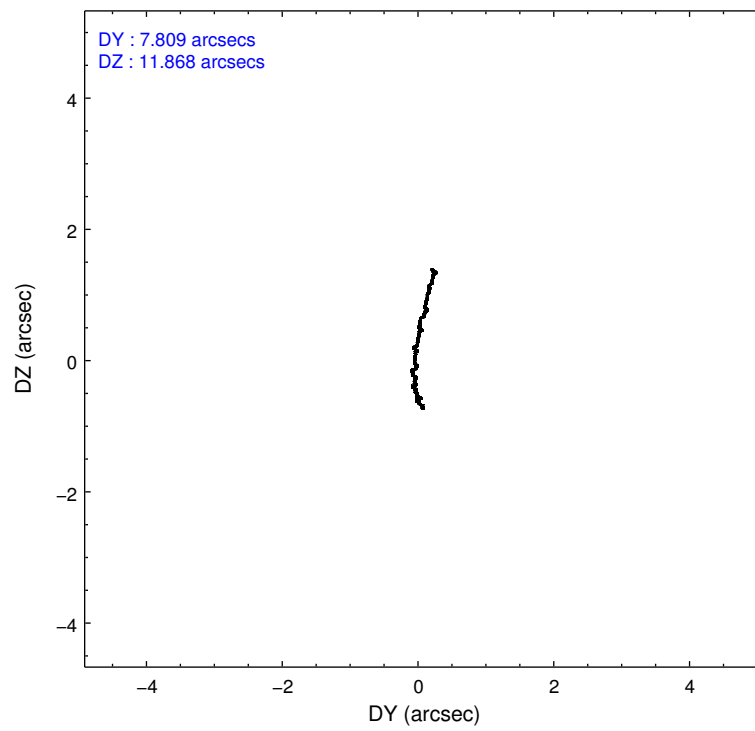
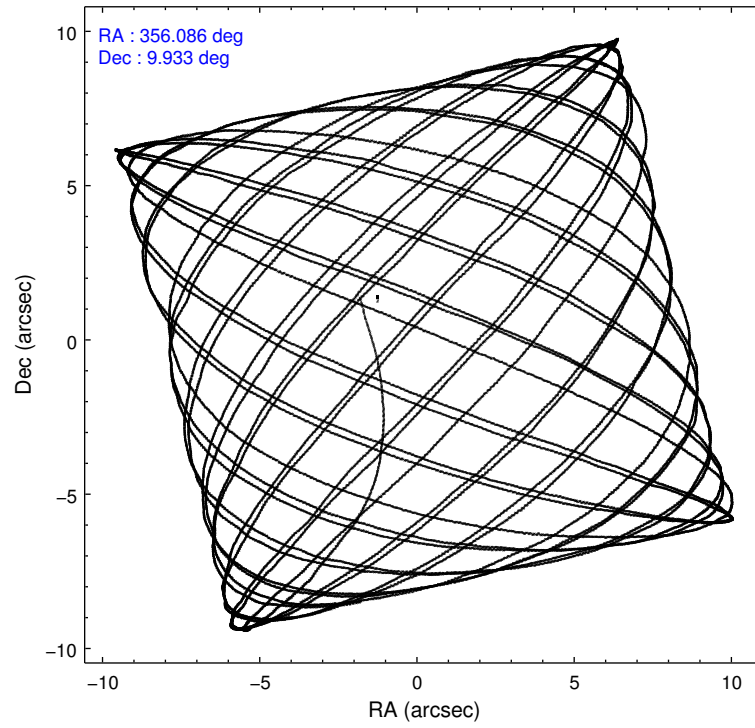
	ccd 7
level 1 events	26802
rejected events	14879
rejected %	55%

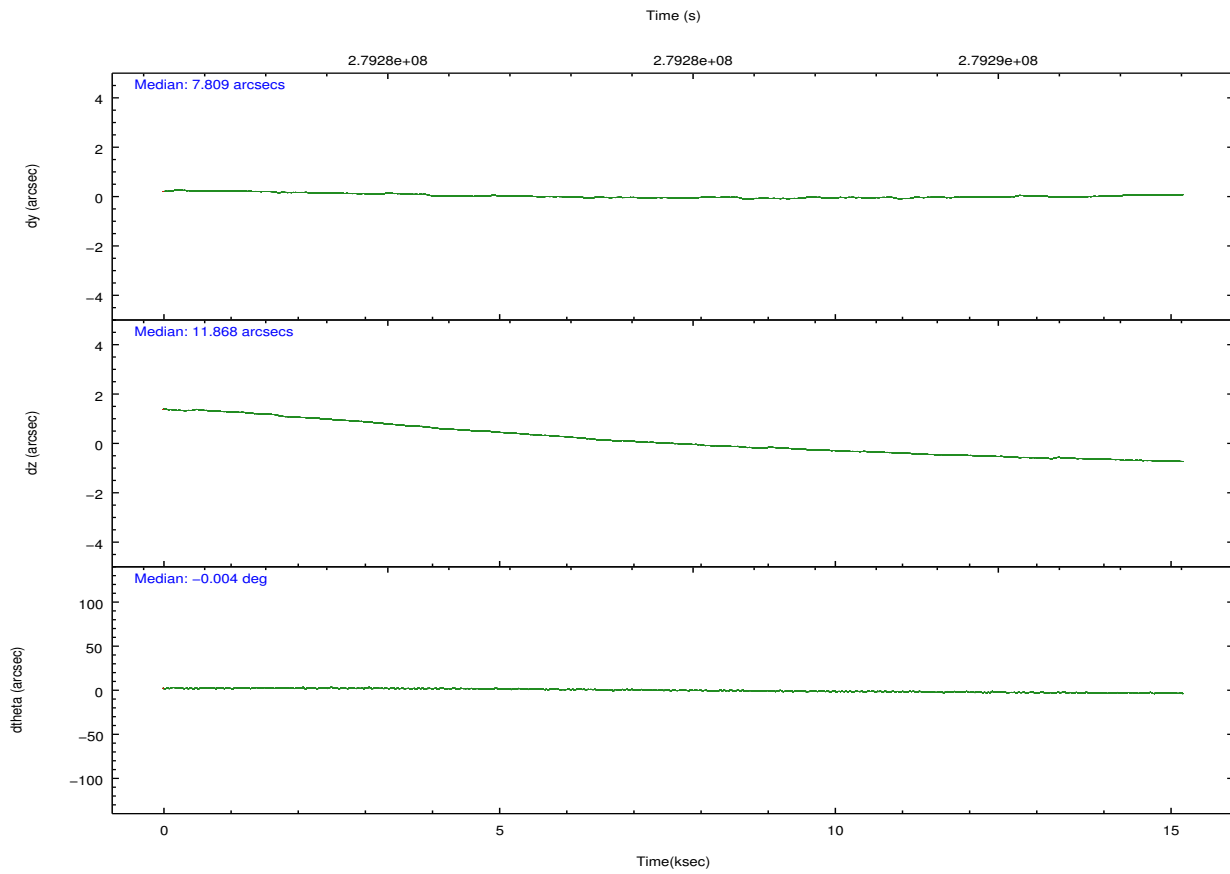
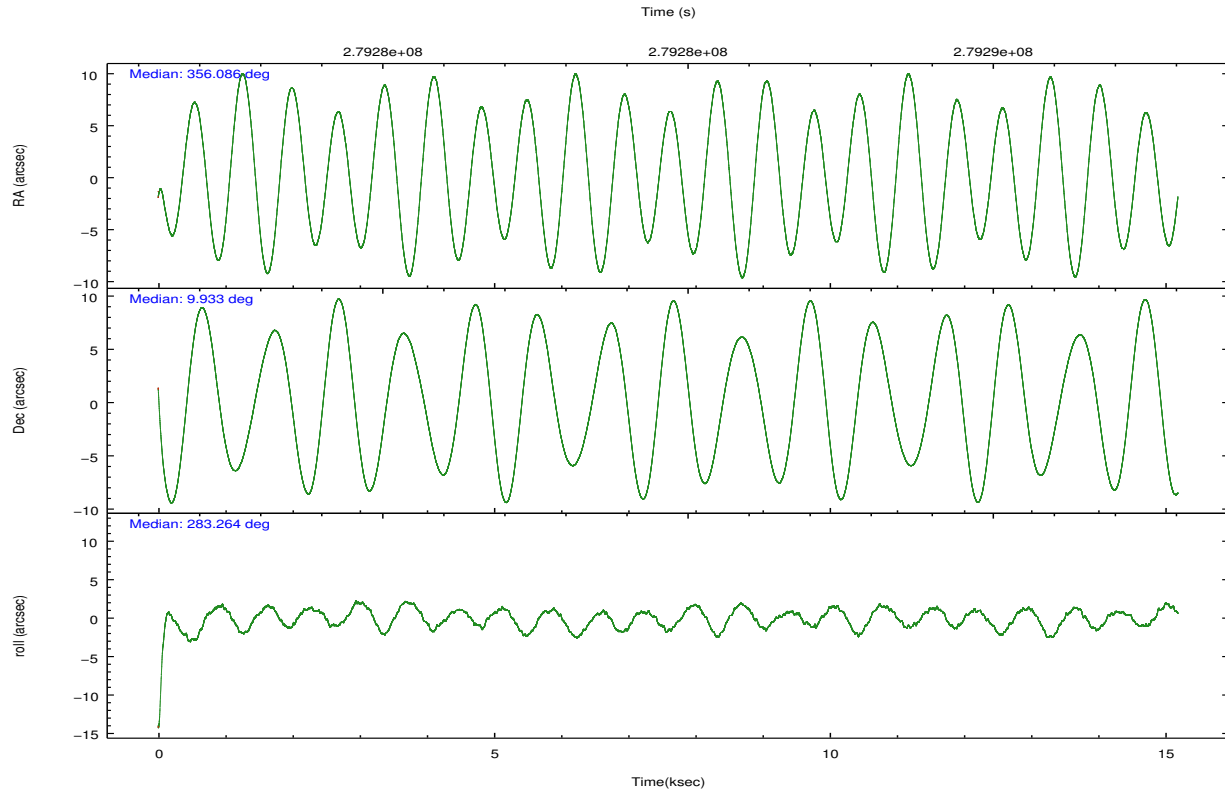
	ccd 7
grade 0 events	1260
	4%
grade 1 events	39
	0%
grade 2 events	2404
	8%
grade 3 events	1657
	6%
grade 4 events	1504
	5%
grade 5 events	2477
	9%
grade 6 events	5772
	21%
grade 7 events	11689
	43%

2.2 Compared Parameters

Parameter	Planned	Actual	Parameter	Planned	Actual
Instrument	ACIS	ACIS	Obspar format version number	7	7
Detector	ACIS-7	ACIS-7	Obspar file type	PREDICTED	ACTUAL
Grating	NONE	NONE	Obspar update status	NONE	UPDATED
Data mode	VFAINT	VFAINT	Number of optional ACIS chips dropped	0	0
Observation mode	POINTING	POINTING	On-chip summing requested	N	N
[deg] Pointing RA	356.067328	356.086540343621	Subarray requested	CUSTOM	1/8
[deg] Pointing Dec	9.952146	9.932541508241792	Subarray start row	449	449
[deg] Pointing Roll	283.114409	283.2677142159289	Subarray row count	128	128
[mm] SIM focus pos	-0.684267	-0.6828225247311905	Alternating exposures requested	N	N
[mm] SIM defocus	0	0.001444936568705701	[s] Primary exposure time	0.000000	0.4
[mm] SIM translation stage pos	-190.132523	-190.1425803651734			
[mm] SIM translation stage offset	0	0.01005778216563158			
[s] Observation start time (MET)	279277265.184000	279276117.59441			
Observation start date	2006-11-07T09:00:00	2006-11-07T08:41:57			
[s] Observation end time (MET)	279292265.184000	279293595.89523			
Observation end date	2006-11-07T13:10:00	2006-11-07T13:33:15			
Read mode	TIMED	TIMED			

2.3 Aspect



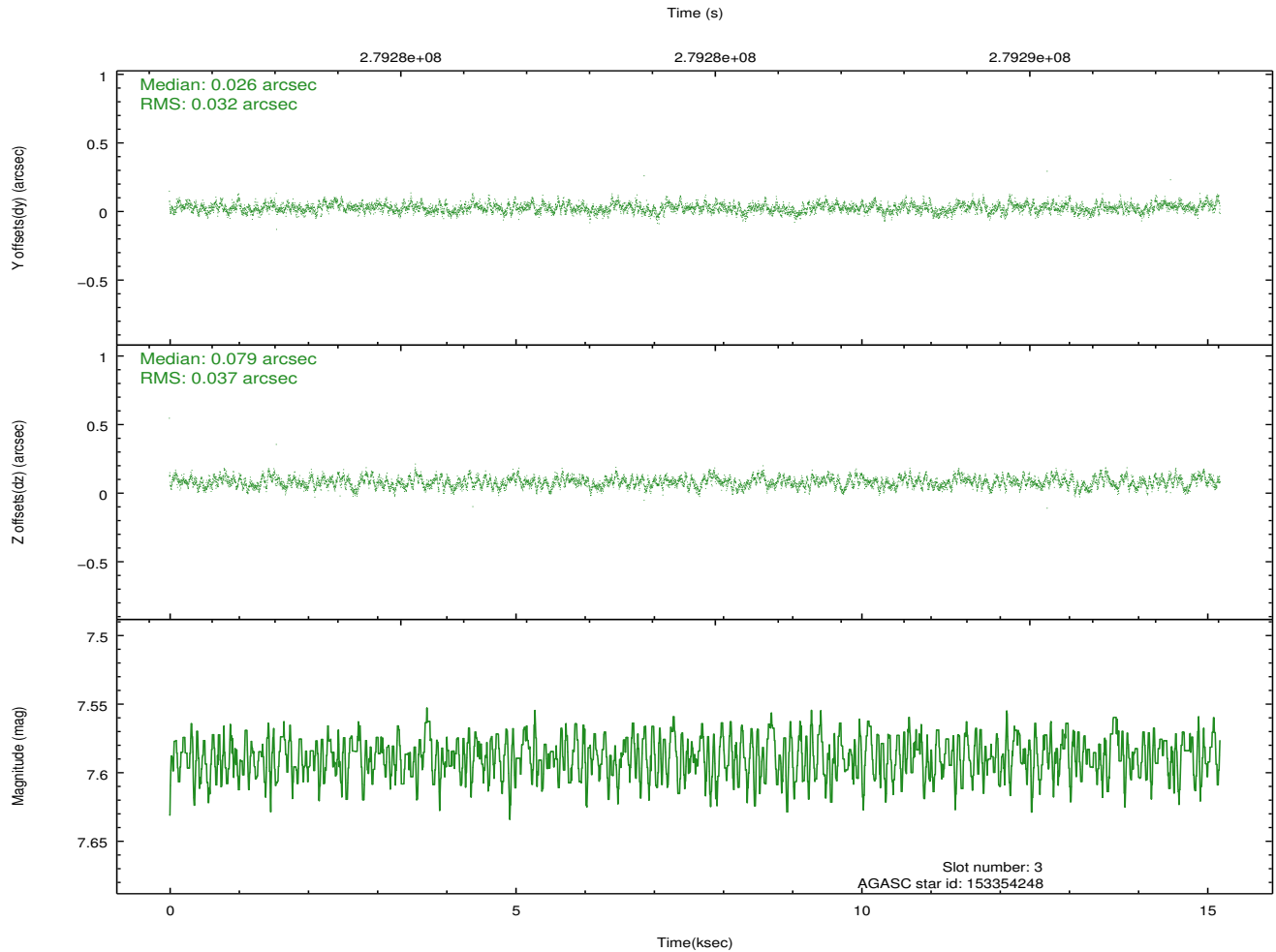
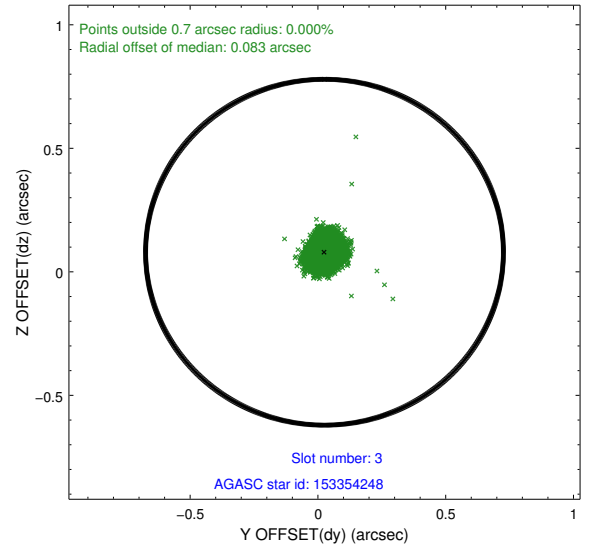
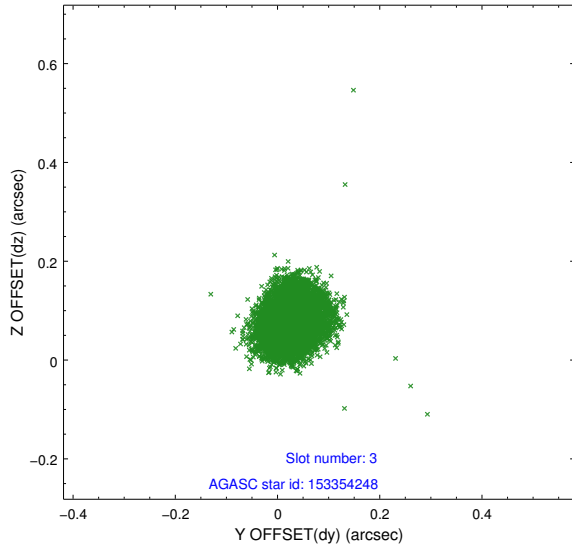


Slot Statistics

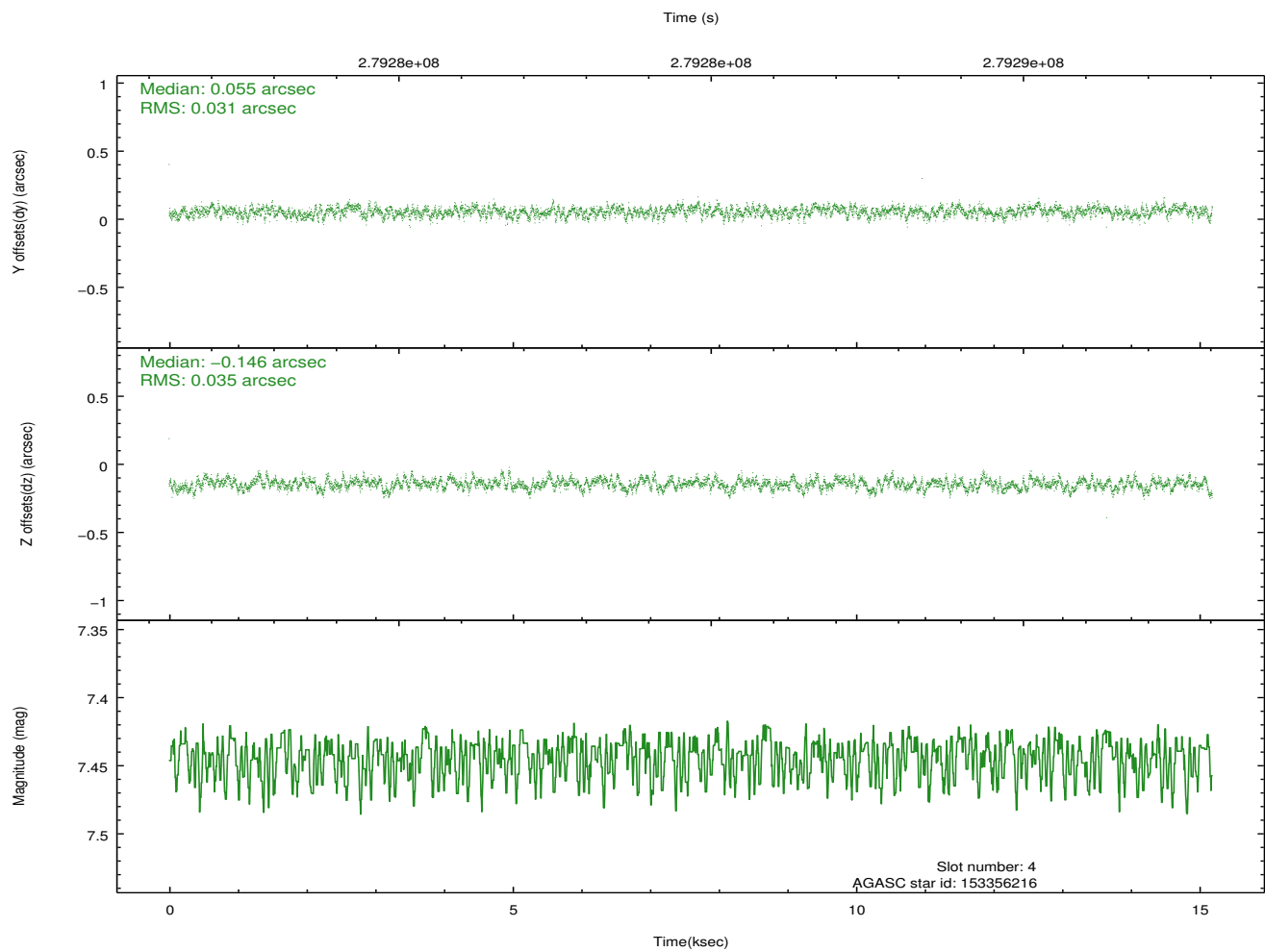
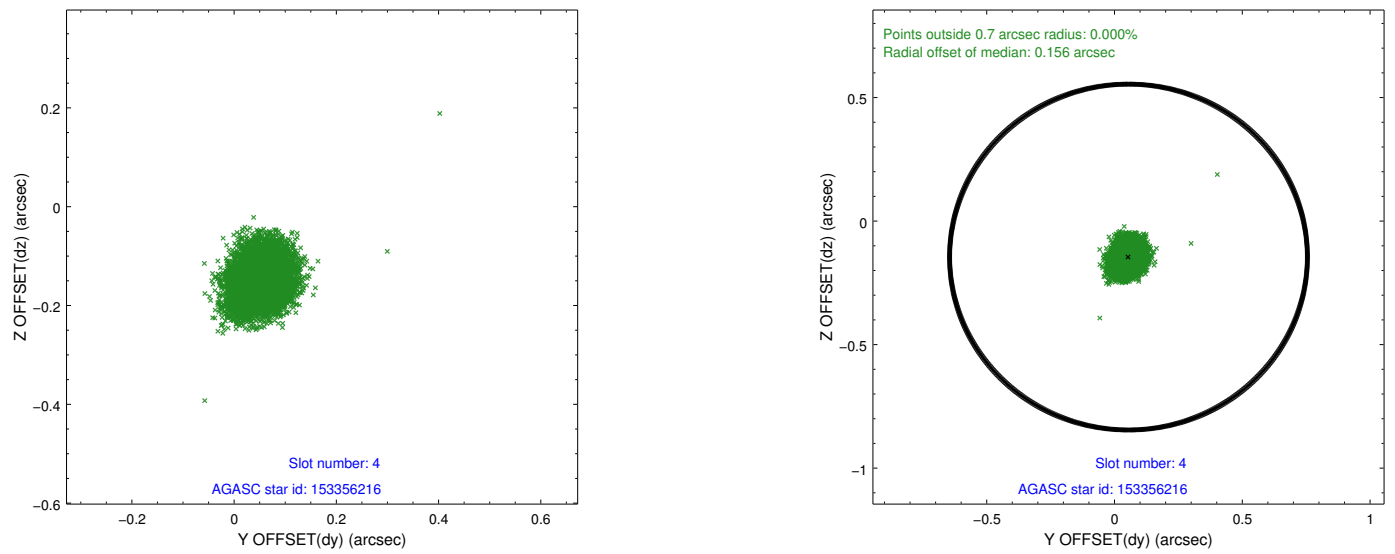
slot	status	id	mag	n_pts	med_dy	med_dz	dr1	dr2	ra	dec	mean_y	mean_z
0	FID	ACIS-S-2	7.11	3705	-0.024	-0.031	0.019	0.030	0.000000	0.000000	-760.63	-1733.30
1	FID	ACIS-S-4	7.21	3705	0.104	0.021	0.008	0.014	0.000000	0.000000	2152.63	174.95
2	FID	ACIS-S-5	7.24	3705	-0.108	0.019	0.017	0.035	0.000000	0.000000	-1813.19	168.94
3	GUIDE	153354248	7.59	7410	0.026	0.079	0.053	0.082	356.576457	9.785073	995.44	1622.65
4	GUIDE	153356216	7.44	7409	0.055	-0.146	0.050	0.081	355.704509	9.885468	-58.33	-1307.17
5	GUIDE	153358760	8.33	7404	0.106	0.111	0.060	0.096	356.765278	9.548473	1975.38	2084.60
6	GUIDE	153758672	7.83	7410	-0.077	0.006	0.050	0.081	355.711432	10.481892	-2143.52	-793.91
7	GUIDE	153760104	9.11	7403	-0.108	-0.055	0.076	0.125	355.520417	10.458851	-2217.67	-1471.04

2.4 Star Slots

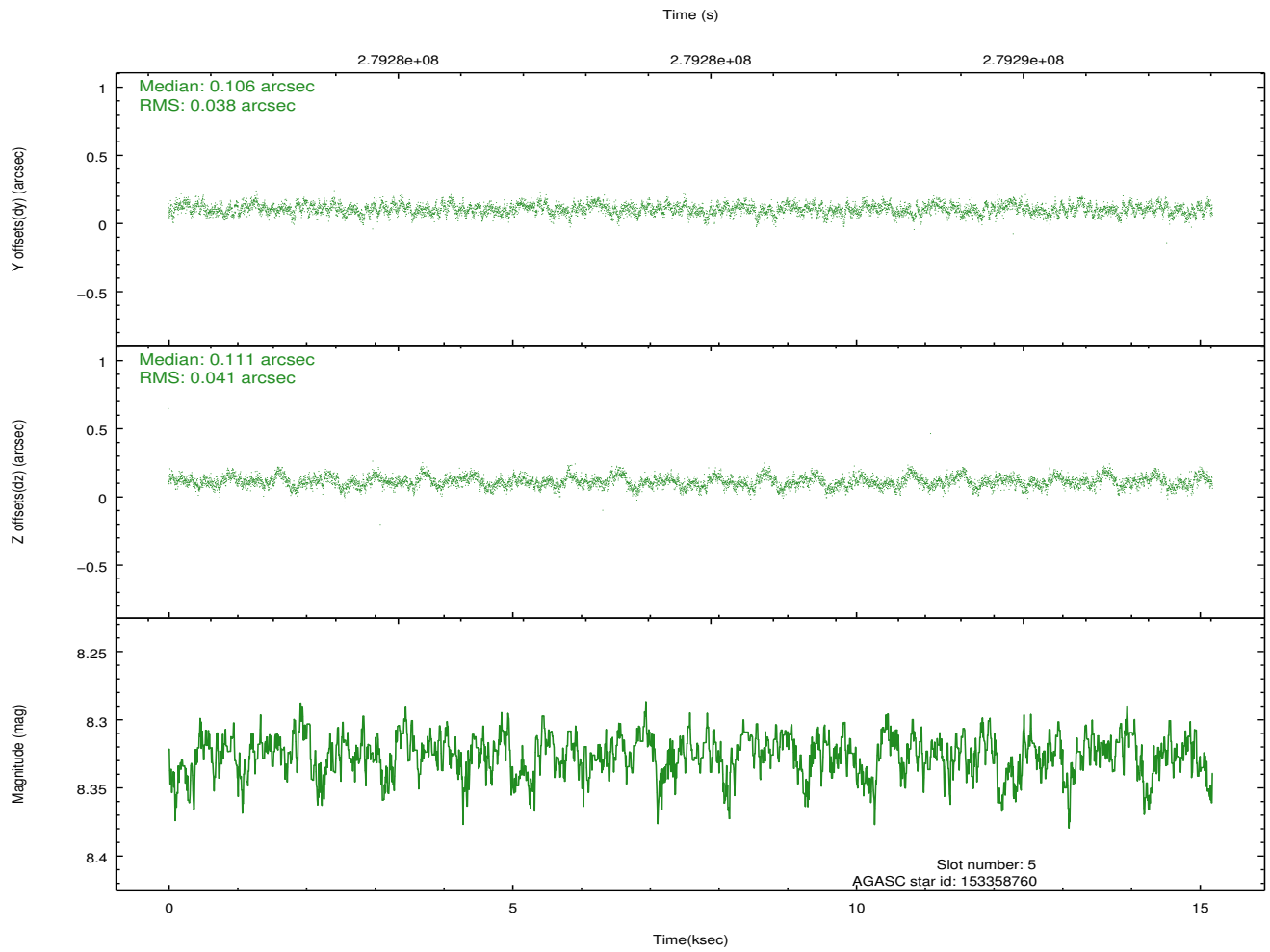
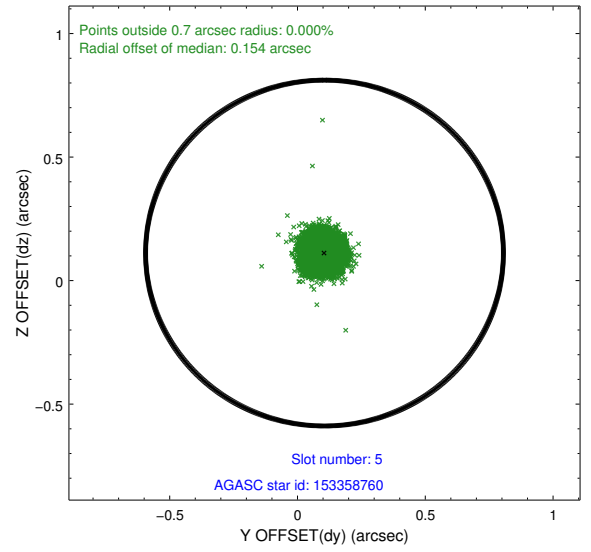
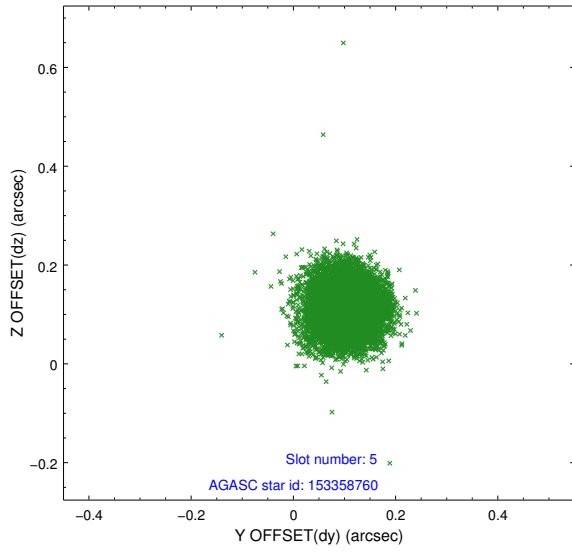
2.4.1 Slot 3



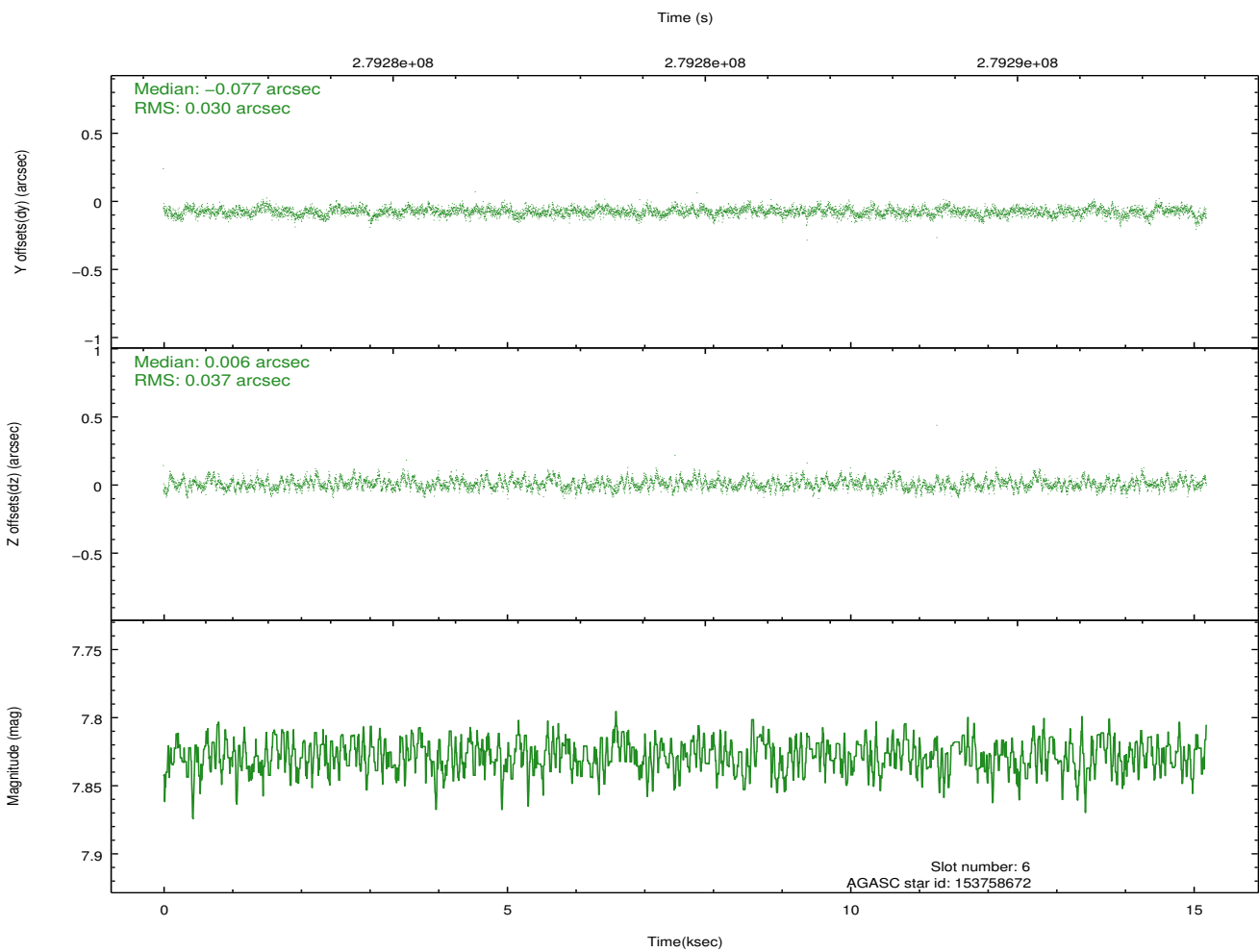
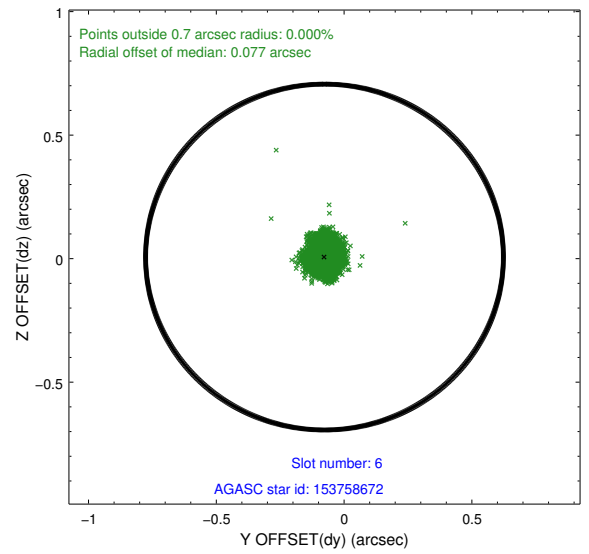
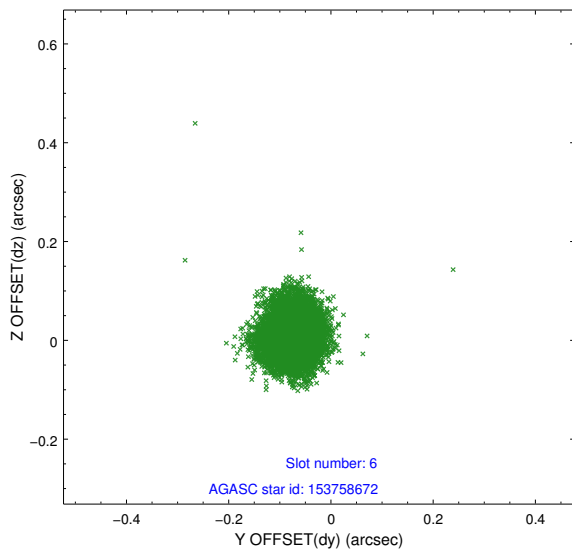
2.4.2 Slot 4



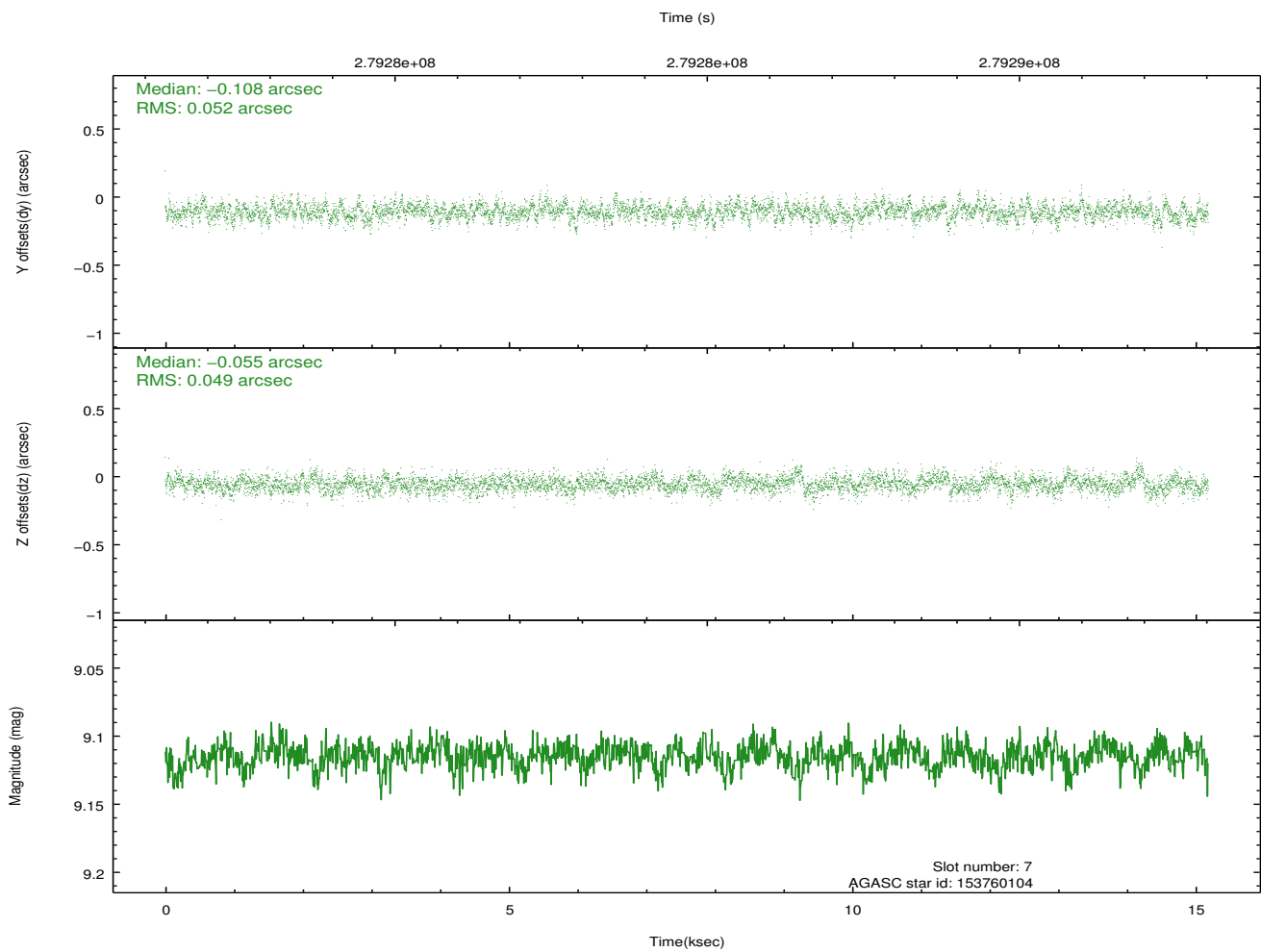
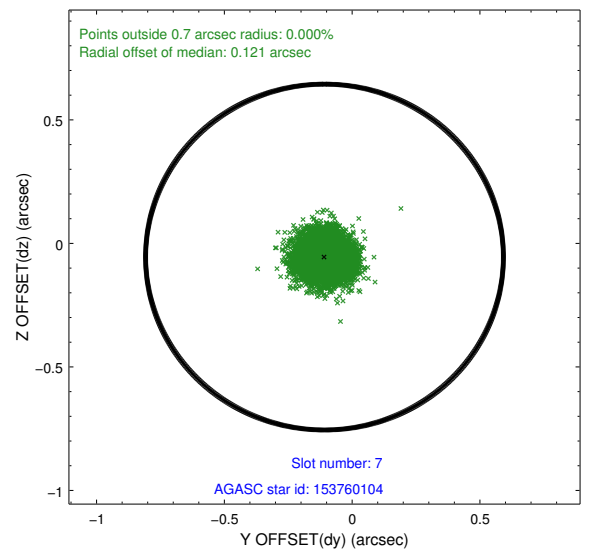
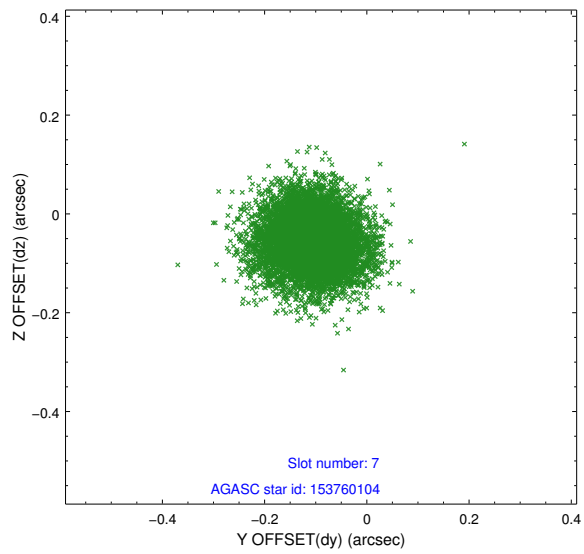
2.4.3 Slot 5



2.4.4 Slot 6

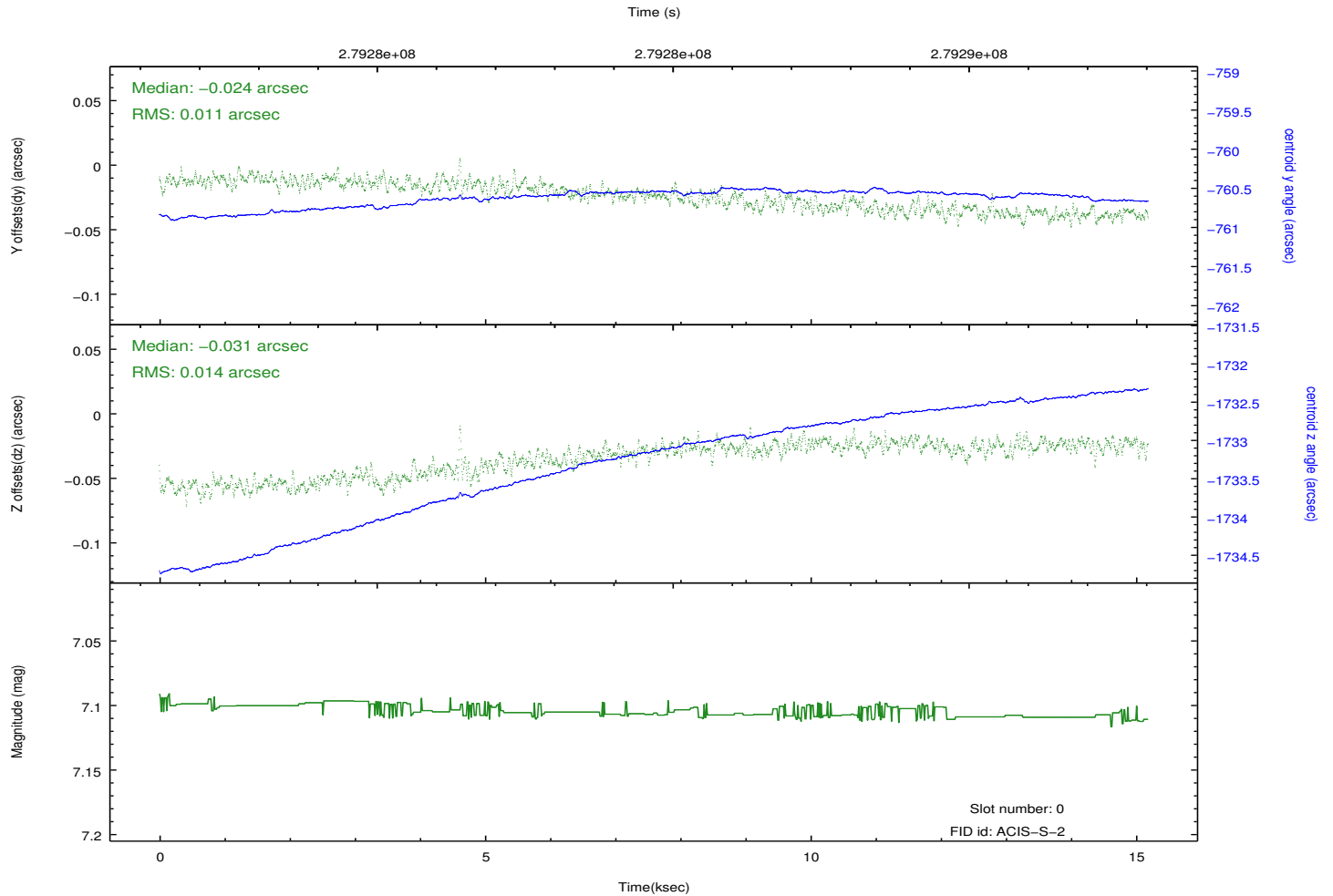
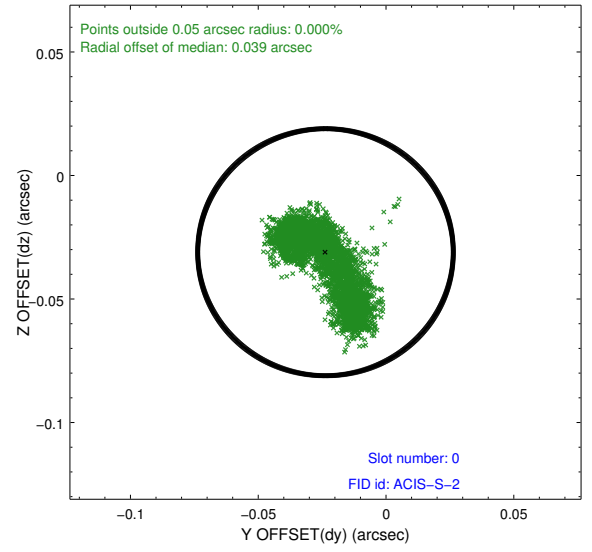
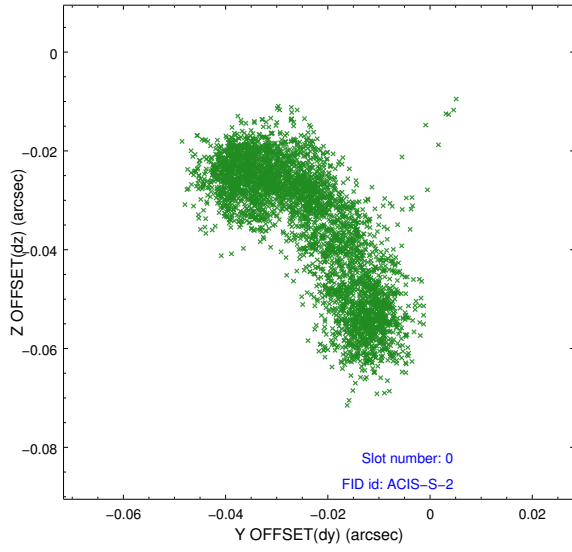


2.4.5 Slot 7

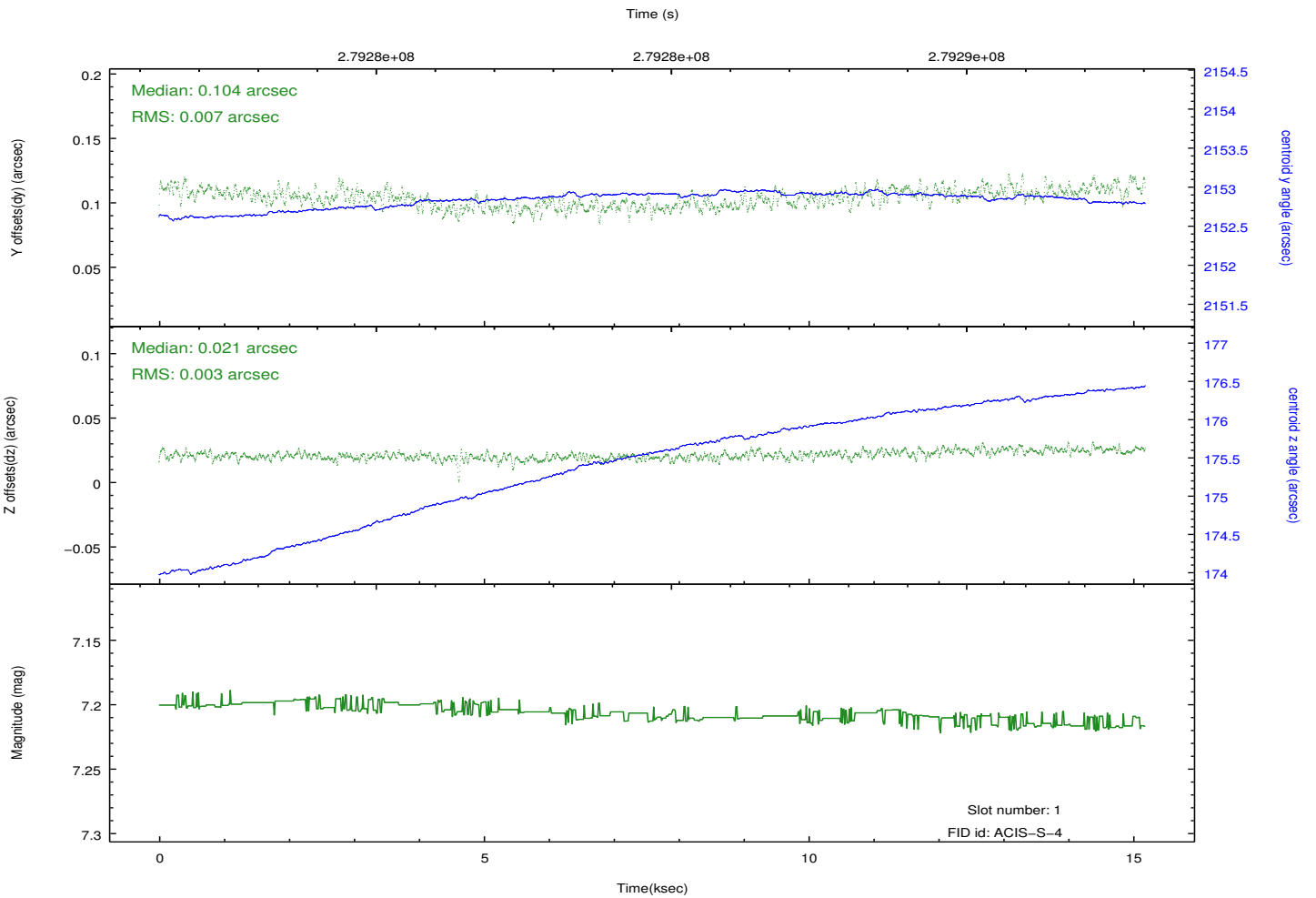
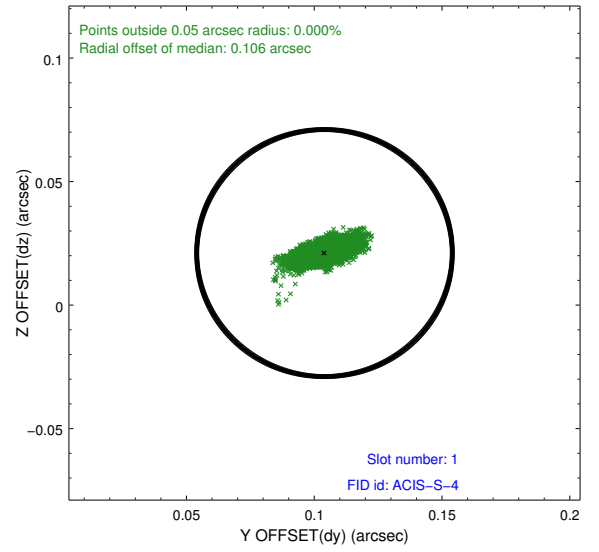
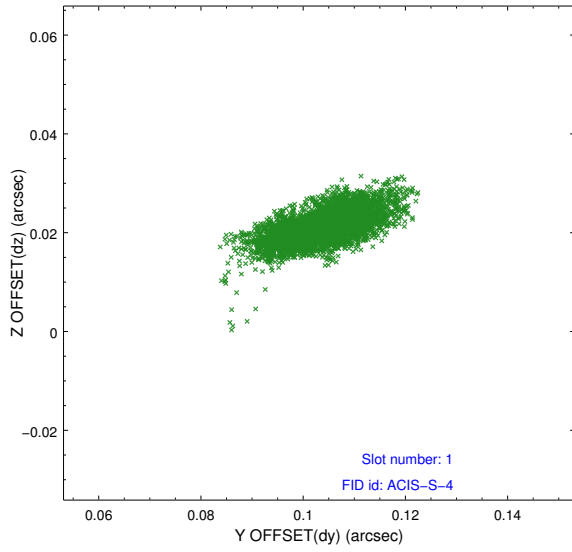


2.5 FID Slots

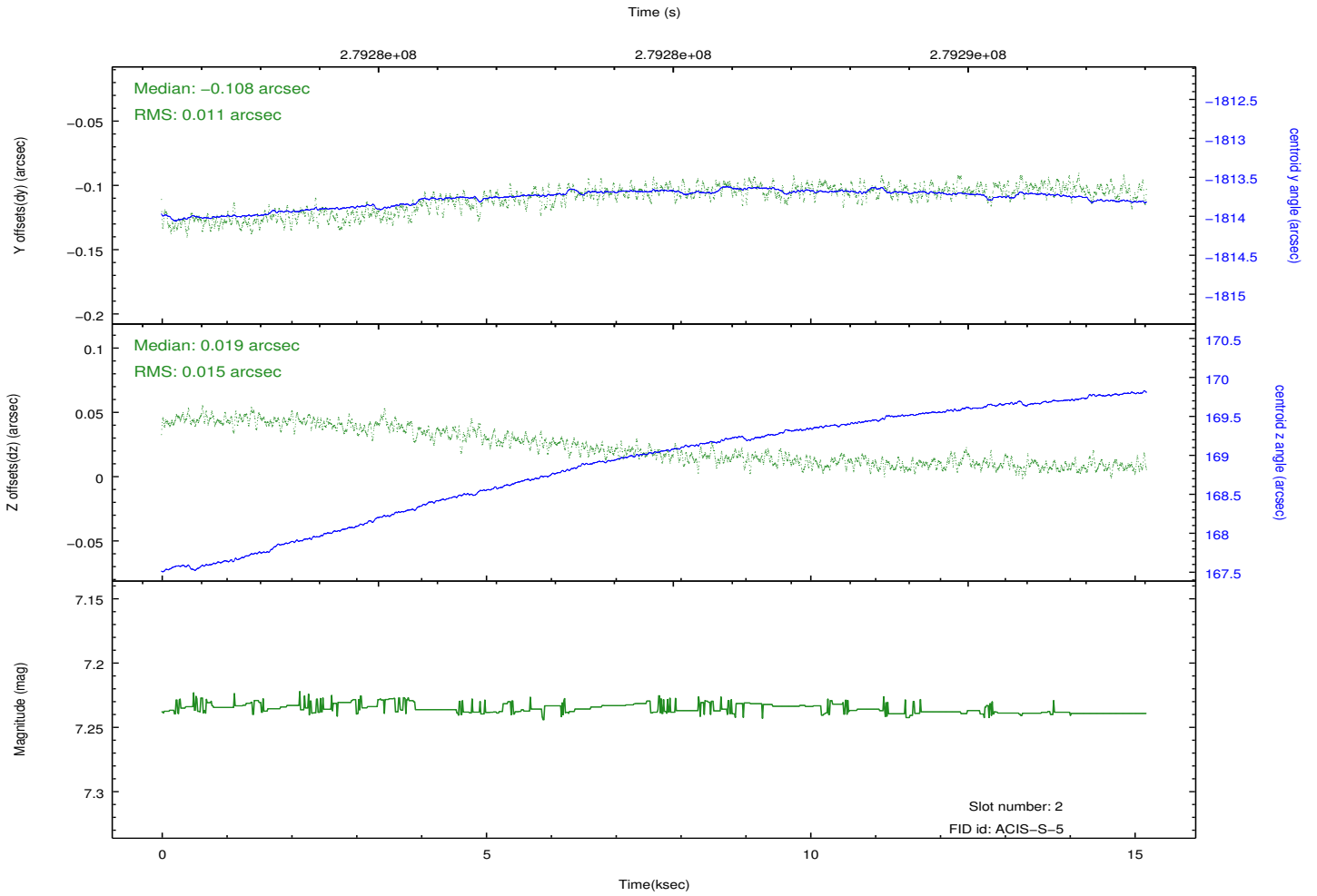
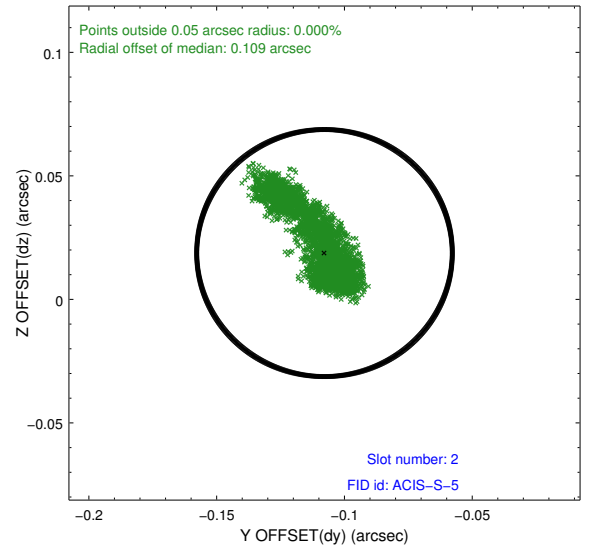
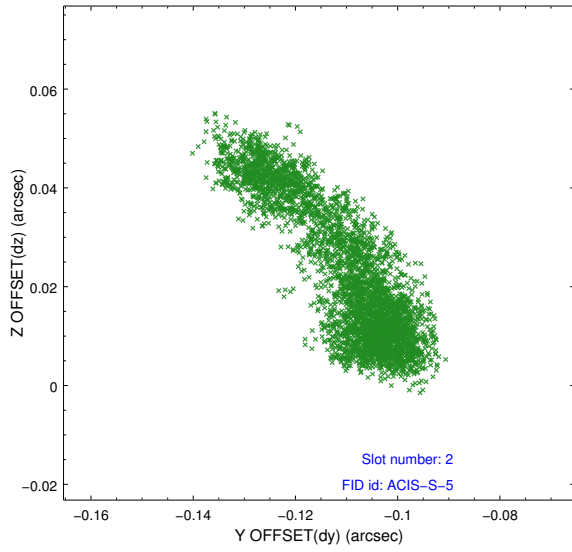
2.5.1 Slot 0



2.5.2 Slot 1



2.5.3 Slot 2



A Summary

A.1 Status

V&V Scientist	Beth Sundheim
V&V Date (YYYY-MM-DD)	2012.04.13
V&V Edition	1
V&V Disposition and Status	OK
V&V Charge Time	15.187599

A.2 Comments