

# V&V Reference Report

## L2 ASCDS Version : 8.4.3

Observation 6850 - L2 Version 2  
Chandra X-Ray Center

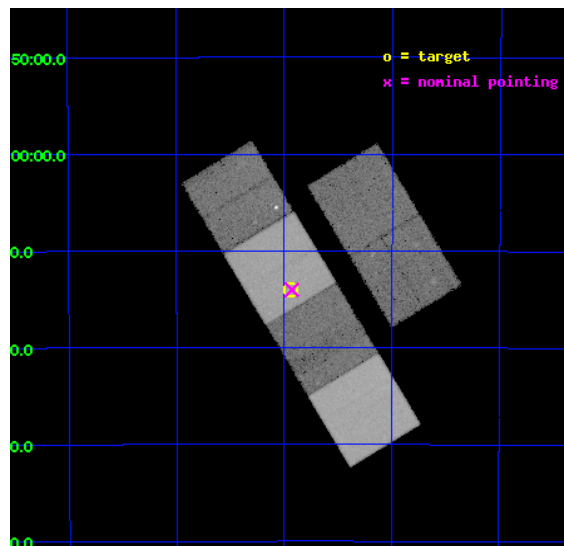
L2 Processing Date : Mar 26 2012

## Contents

<b>1</b>	<b>Front</b>	<b>2</b>
<b>2</b>	<b>OBI</b>	<b>3</b>
2.1	OBI . . . . .	3
2.1.1	Images . . . . .	3
2.1.2	Bias . . . . .	3
2.1.3	Parameters . . . . .	4
2.1.4	Events . . . . .	4
2.2	Compared Parameters . . . . .	5
2.3	Aspect . . . . .	6
2.4	Star Slots . . . . .	9
2.4.1	Slot 3 . . . . .	9
2.4.2	Slot 4 . . . . .	10
2.4.3	Slot 5 . . . . .	11
2.4.4	Slot 6 . . . . .	12
2.4.5	Slot 7 . . . . .	13
2.5	FID Slots . . . . .	14
2.5.1	Slot 0 . . . . .	14
2.5.2	Slot 1 . . . . .	15
2.5.3	Slot 2 . . . . .	16
<b>A</b>	<b>Summary</b>	<b>17</b>
A.1	Status . . . . .	17
A.2	Comments . . . . .	17

# 1 Front

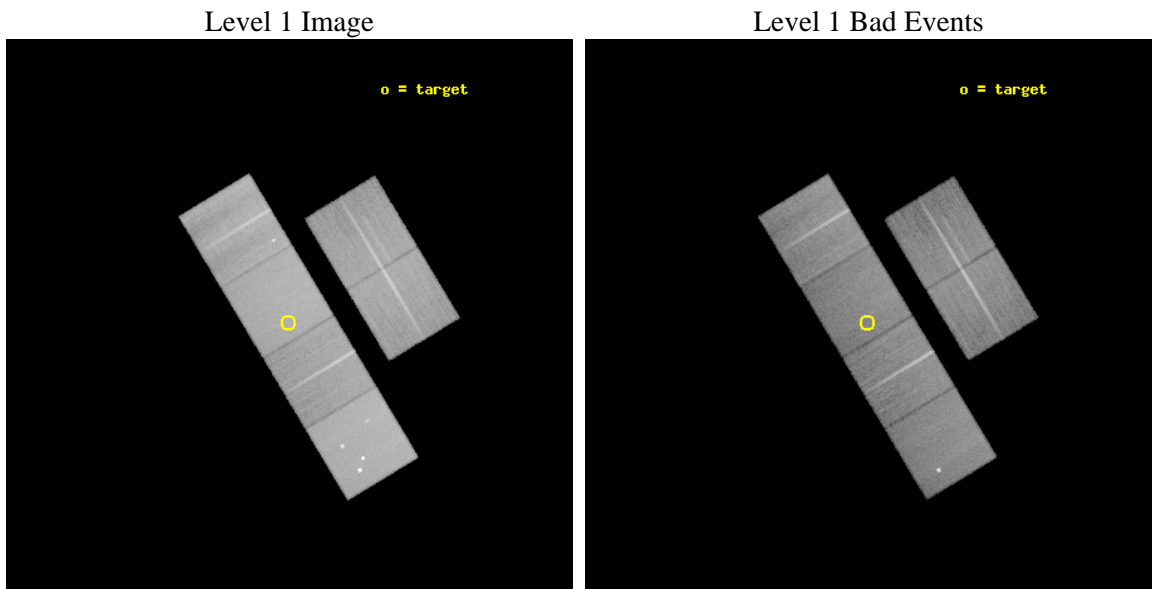
seq_num	701268	Sequence number
obs_id	6850	Observation id
title	Unveiling obscured AGNs in close pairs of similar sized galaxies	P
observer	Dr. Nora Loiseau	Principal investigator
object	AM 0117-412	Source name
dtcycle	0	&#160
cycle	P	events from which exps? Prim/Second/Both
ra_targ	19.985	Observer's specified target RA [deg]
dec_targ	-41.233611	Observer's specified target Dec [deg]
ra_nom	19.982238250226	Nominal RA [deg]
dec_nom	-41.23382936781	Nominal Dec [deg]
roll_nom	238.89791292862	Nominal Roll [deg]
revision	2	Processing version of data
ontime	30153.599887669	Sum of GTIs [s]
livetime	29771.776849573	Livetime [s]
ontime2	30153.599887669	Sum of GTIs [s]
ontime3	30153.599887669	Sum of GTIs [s]
ontime5	30153.599887669	Sum of GTIs [s]
ontime6	30153.599887669	Sum of GTIs [s]
ontime7	30153.599887669	Sum of GTIs [s]
ontime8	30153.599887669	Sum of GTIs [s]
l2events	425052	Number of level 2 events



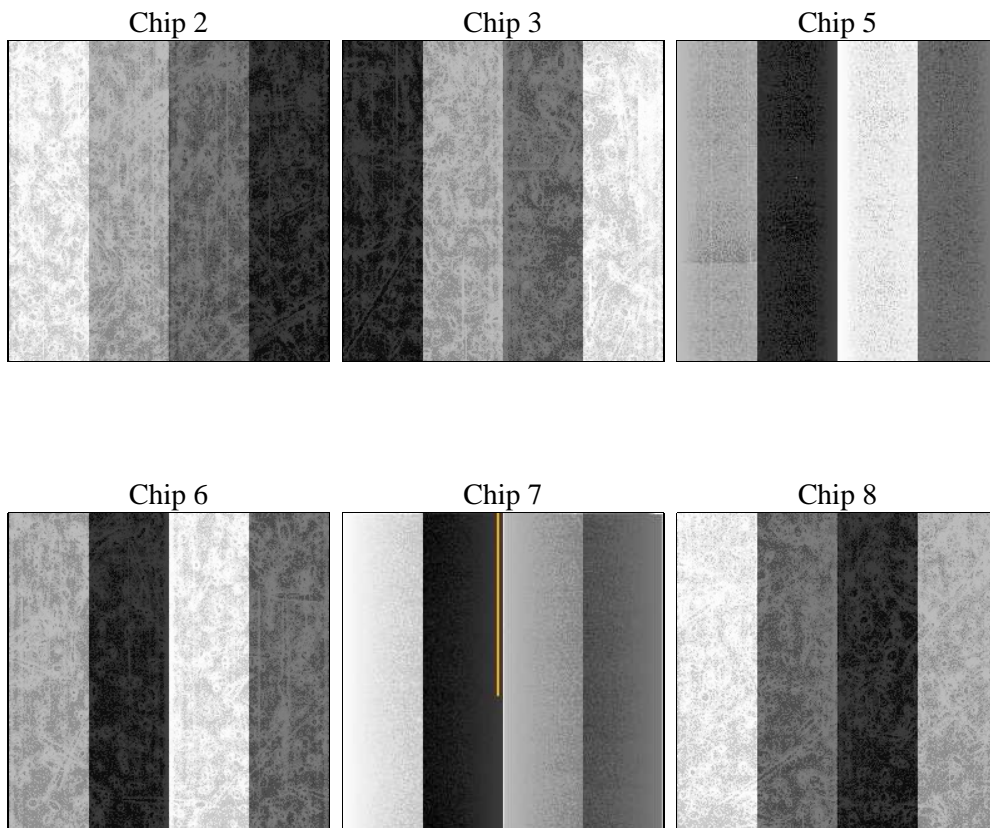
## 2 OBI

### 2.1 OBI

#### 2.1.1 Images



#### 2.1.2 Bias



### 2.1.3 Parameters

obi_num	0	Obi number	sched_exp_time	30000.000000	[s] Scheduled observation exposure time
ascdsver	8.4.3	Processing system revision	ontime	30153.599887669	Sum of GTIs [s]
caldbver	4.4.8	&#160	ontime2	30153.599887669	Sum of GTIs [s]
date	2012-03-26T07:30:11	Date and time of file creation	ontime3	30153.599887669	Sum of GTIs [s]
revision	2	Processing version of data	ontime5	30153.599887669	Sum of GTIs [s]
			ontime6	30153.599887669	Sum of GTIs [s]
			ontime7	30153.599887669	Sum of GTIs [s]
			ontime8	30153.599887669	Sum of GTIs [s]
			l1events	1875464	Number of level 1 events

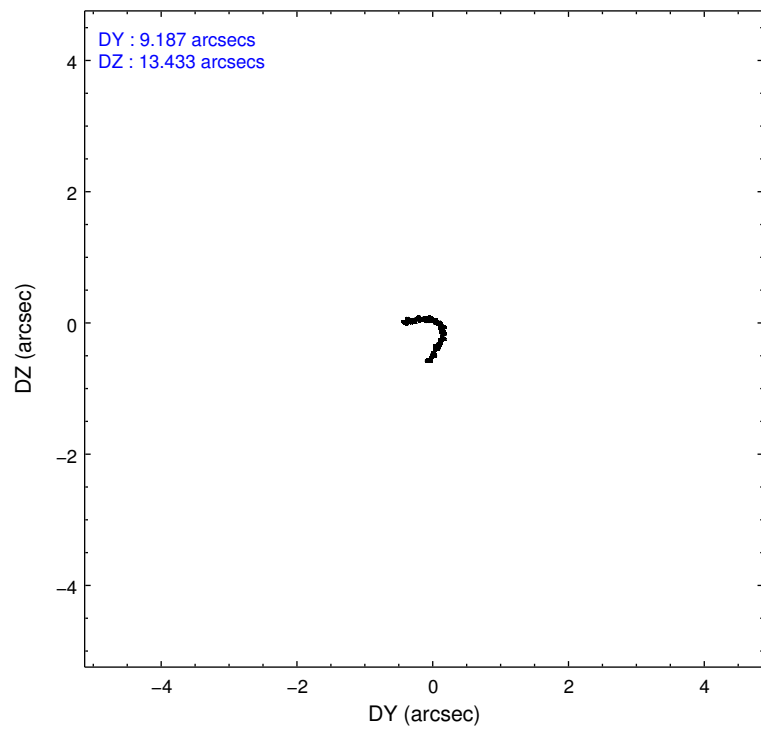
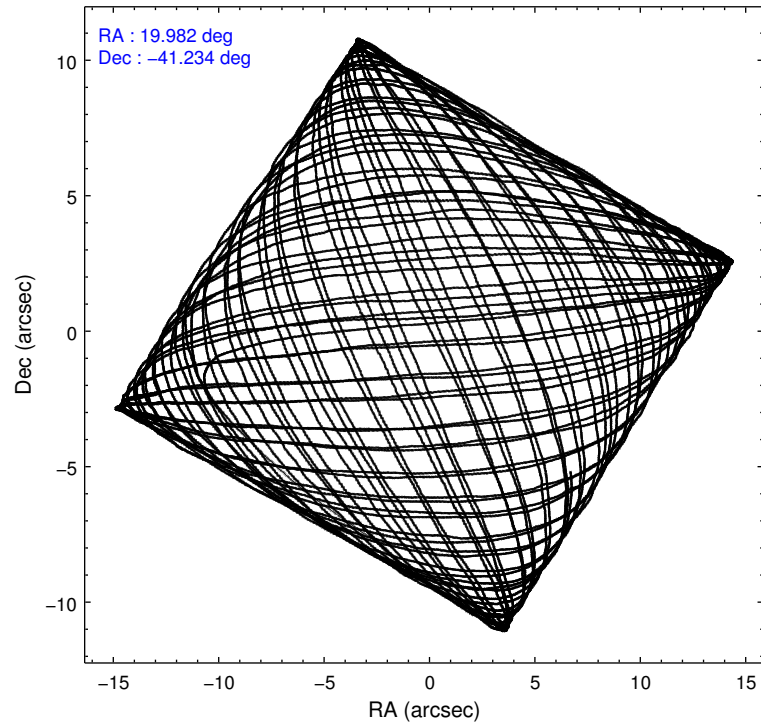
### 2.1.4 Events

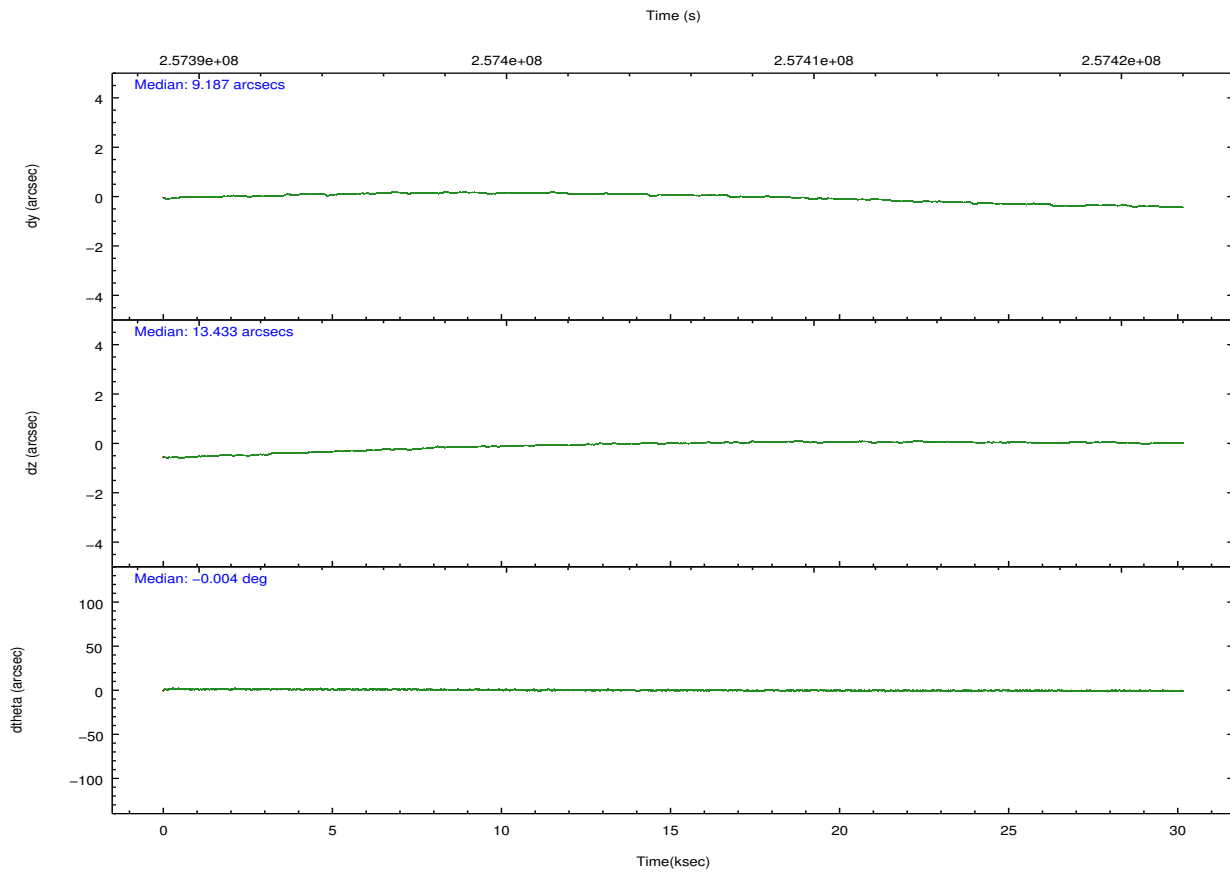
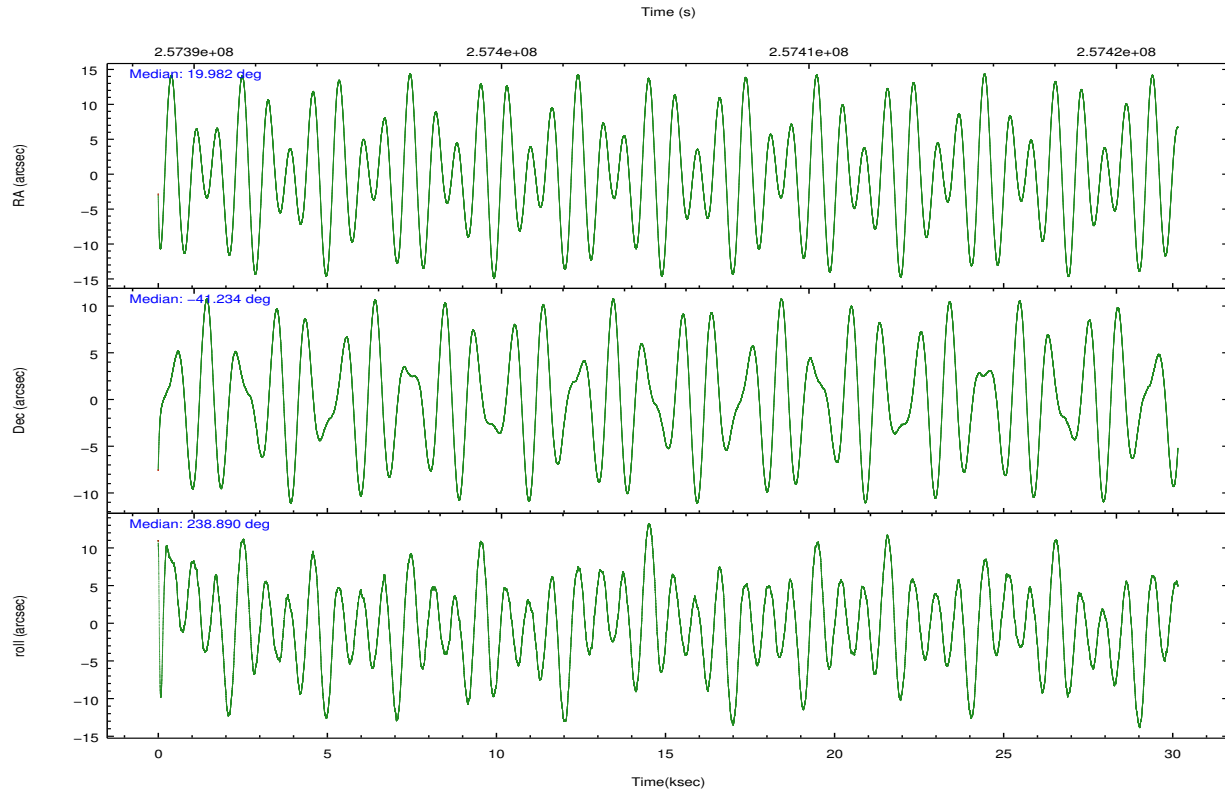
	ccd 2	ccd 3	ccd 5	ccd 6	ccd 7	ccd 8		ccd 2	ccd 3	ccd 5	ccd 6	ccd 7	ccd 8
level 1 events	271912	249956	404606	261876	354169	332945	grade 0 events	13930	13025	22987	12103	13070	25143
rejected events	240493	220155	217164	230744	206717	257841		5%	5%	5%	4%	3%	7%
rejected %	88%	88%	53%	88%	58%	77%	grade 1 events	166	171	482	138	362	258
								0%	0%	0%	0%	0%	0%
							grade 2 events	6528	5818	55132	6596	29855	16212
								2%	2%	13%	2%	8%	4%
							grade 3 events	2961	2954	7817	3030	12904	7844
								1%	1%	1%	1%	3%	2%
							grade 4 events	2896	2884	6344	3025	12856	7323
								1%	1%	1%	1%	3%	2%
							grade 5 events	10319	11511	30681	12179	33796	16070
								3%	4%	7%	4%	9%	4%
							grade 6 events	5141	5166	95404	6420	78935	18659
								1%	2%	23%	2%	22%	5%
							grade 7 events	229971	208427	185759	218385	172391	241436
								84%	83%	45%	83%	48%	72%

## 2.2 Compared Parameters

Parameter	Planned	Actual	Parameter	Planned	Actual
Instrument	ACIS	ACIS	Obspar format version number	7	7
Detector	ACIS-235678	ACIS-235678	Obspar file type	PREDICTED	ACTUAL
Grating	NONE	NONE	Obspar update status	NONE	UPDATED
Data mode	FAINT	FAINT	Number of optional ACIS chips dropped	0	0
Observation mode	POINTING	POINTING	On-chip summing requested	N	N
[deg] Pointing RA	19.982449	19.98223825022616	Subarray requested	NONE	NONE
[deg] Pointing Dec	-41.206575	-41.23382936781039	Alternating exposures requested	N	N
[deg] Pointing Roll	238.741414	238.8979129286222	[s] Primary exposure time	0.000000	3.2
[mm] SIM focus pos	-0.684267	-0.6828225247311905			
[mm] SIM defocus	0	0.001444936568705701			
[mm] SIM translation stage pos	-190.132523	-190.1400660498719			
[mm] SIM translation stage offset	0	0.00754346686406393			
[s] Observation start time (MET)	257390491.184000	257389412.0071			
Observation start date	2006-02-27T01:20:26	2006-02-27T01:03:32			
[s] Observation end time (MET)	257420491.184000	257420787.77106			
Observation end date	2006-02-27T09:40:26	2006-02-27T09:46:27			
Read mode	TIMED	TIMED			

## 2.3 Aspect



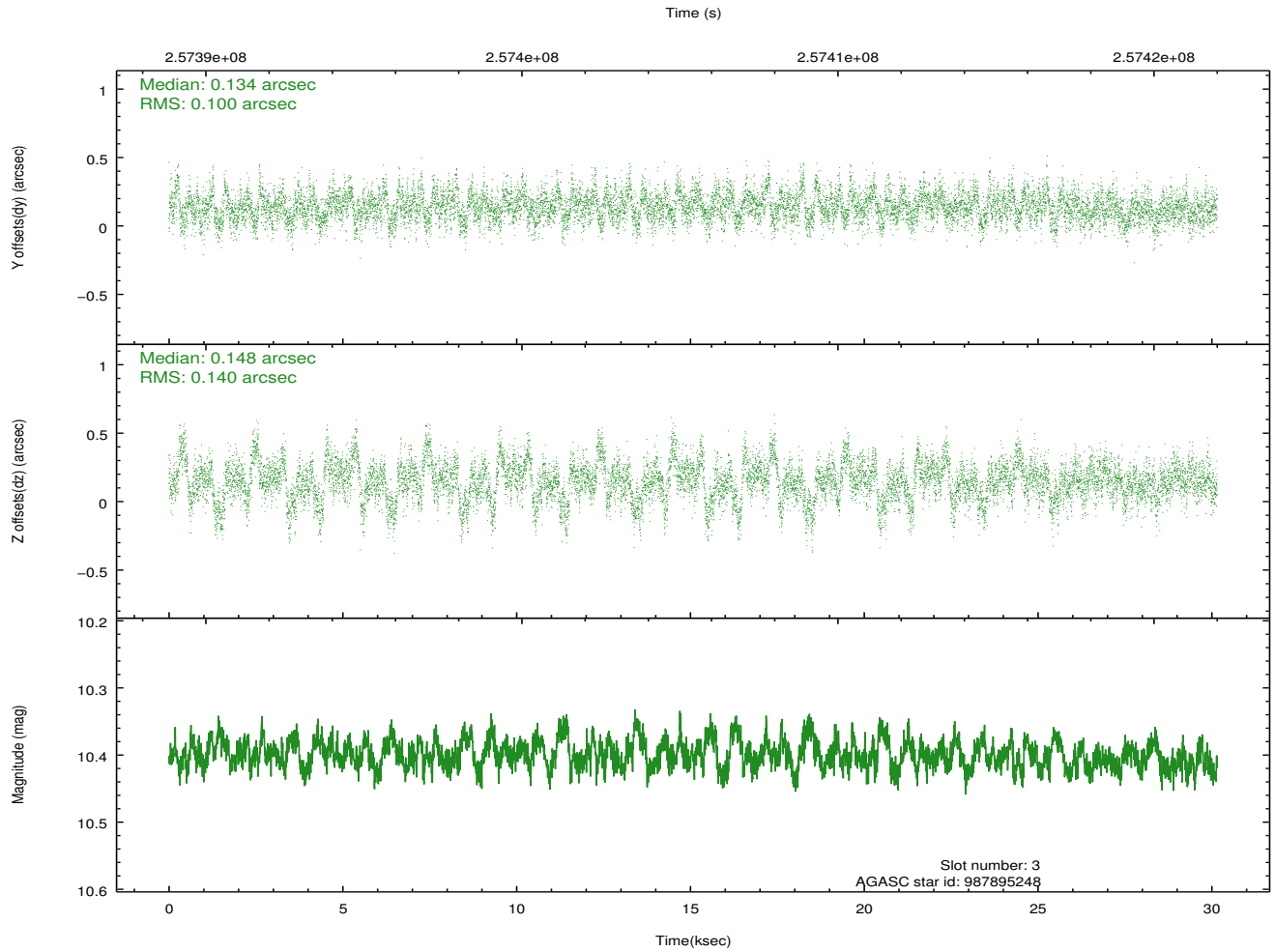
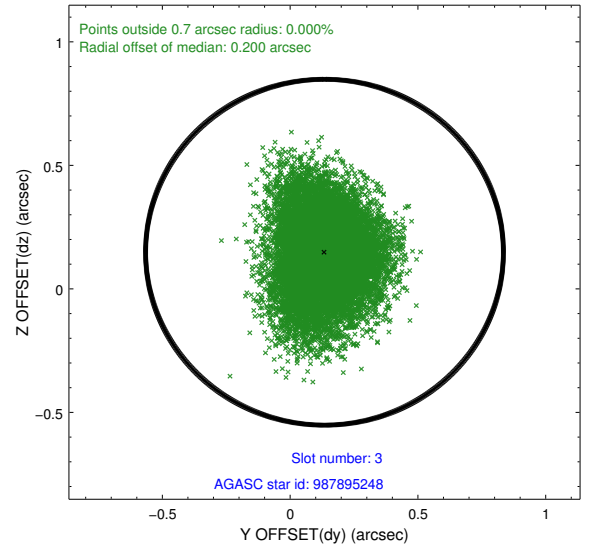
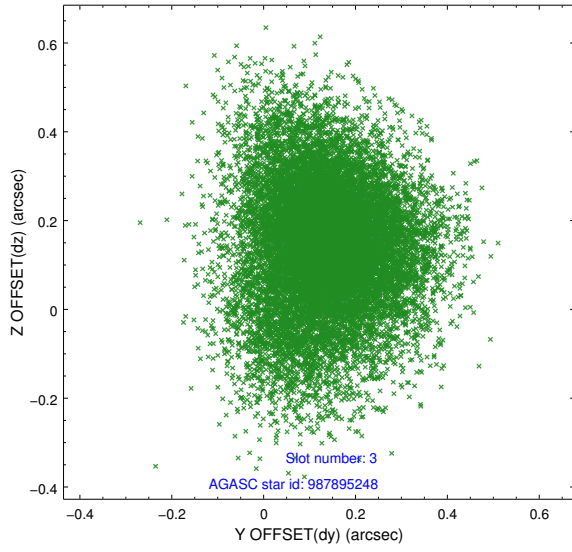


### Slot Statistics

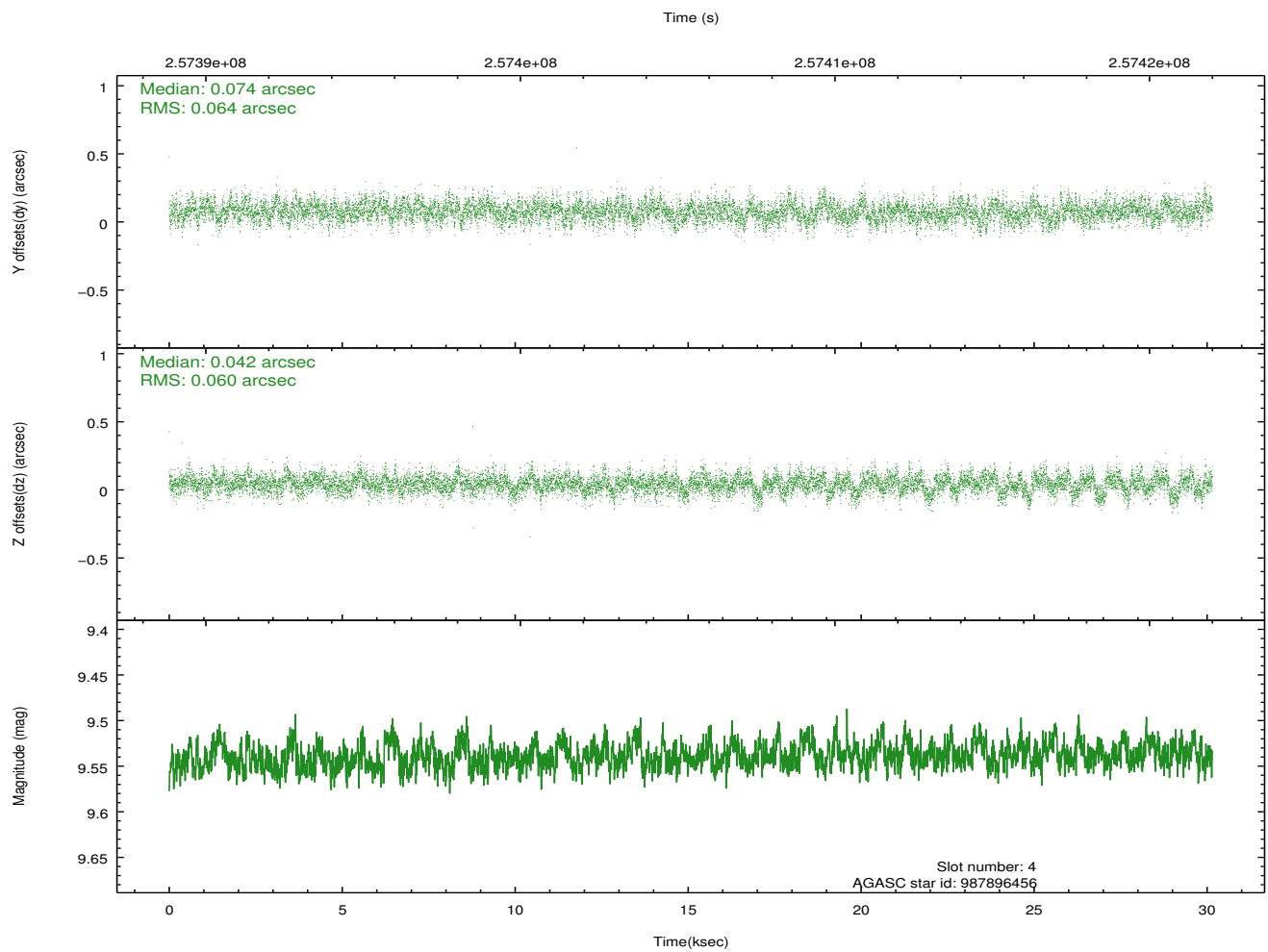
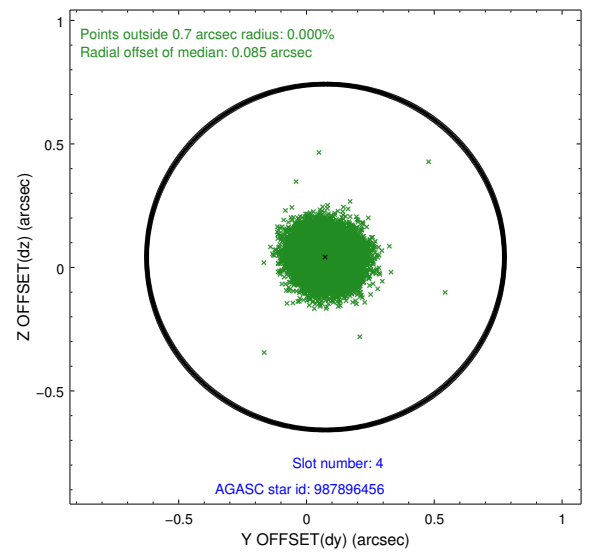
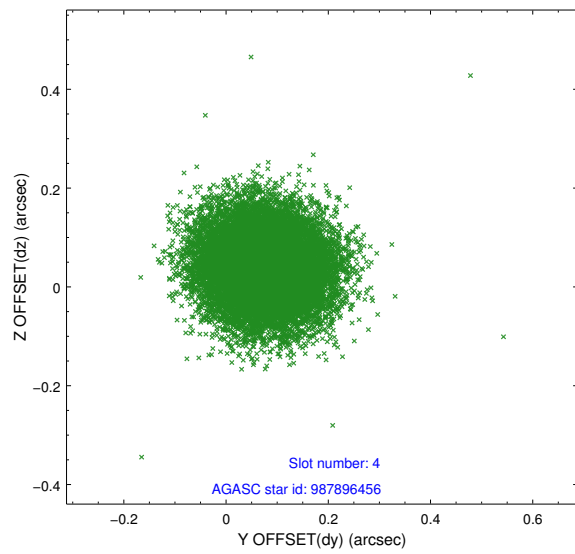
slot	status	id	mag	n_pts	med_dy	med_dz	dr1	dr2	ra	dec	mean_y	mean_z
0	FID	ACIS-S-1	7.19	7356	0.042	-0.012	0.012	0.022	0.000000	0.000000	934.08	-1730.34
1	FID	ACIS-S-4	7.20	7356	0.104	-0.007	0.010	0.017	0.000000	0.000000	2151.63	173.73
2	FID	ACIS-S-5	7.23	7356	-0.173	0.032	0.011	0.018	0.000000	0.000000	-1814.87	167.53
3	GUIDE	987895248	10.40	14694	0.134	0.148	0.180	0.308	19.900464	-40.839512	-1013.34	-876.45
4	GUIDE	987896456	9.54	14700	0.074	0.042	0.094	0.152	19.476187	-41.588218	1885.65	-449.06
5	GUIDE	987897416	9.89	14686	-0.162	-0.017	0.146	0.238	19.419749	-41.185539	731.06	-1339.53
6	GUIDE	988815056	7.84	14708	-0.015	-0.149	0.083	0.128	20.905147	-41.269802	-1089.25	2259.38
7	GUIDE	987895776	9.76	14691	-0.033	-0.015	0.129	0.203	19.439593	-41.274513	974.97	-1125.14

## 2.4 Star Slots

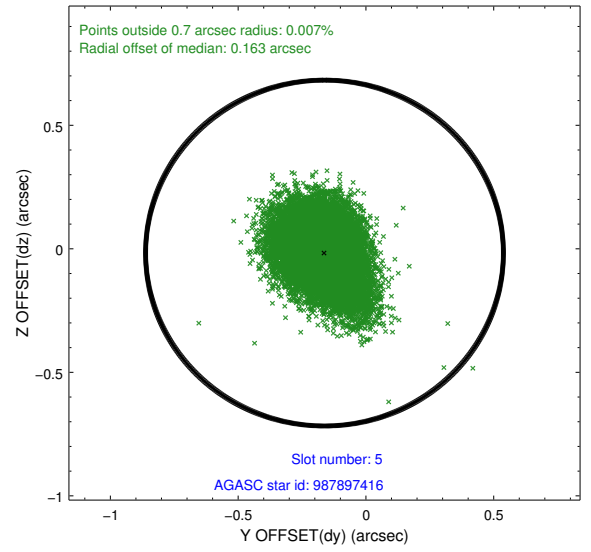
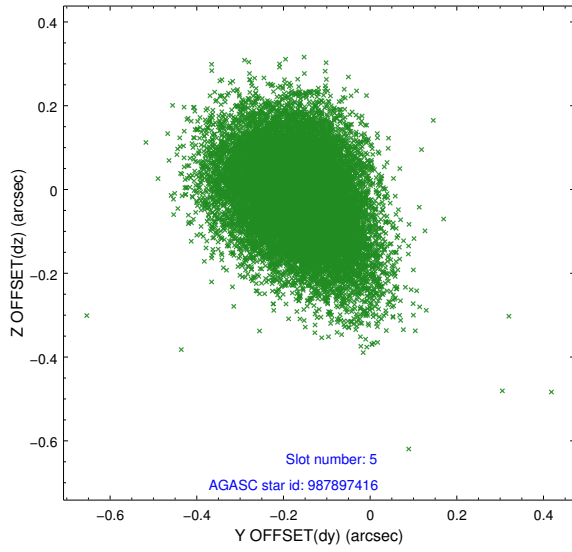
### 2.4.1 Slot 3



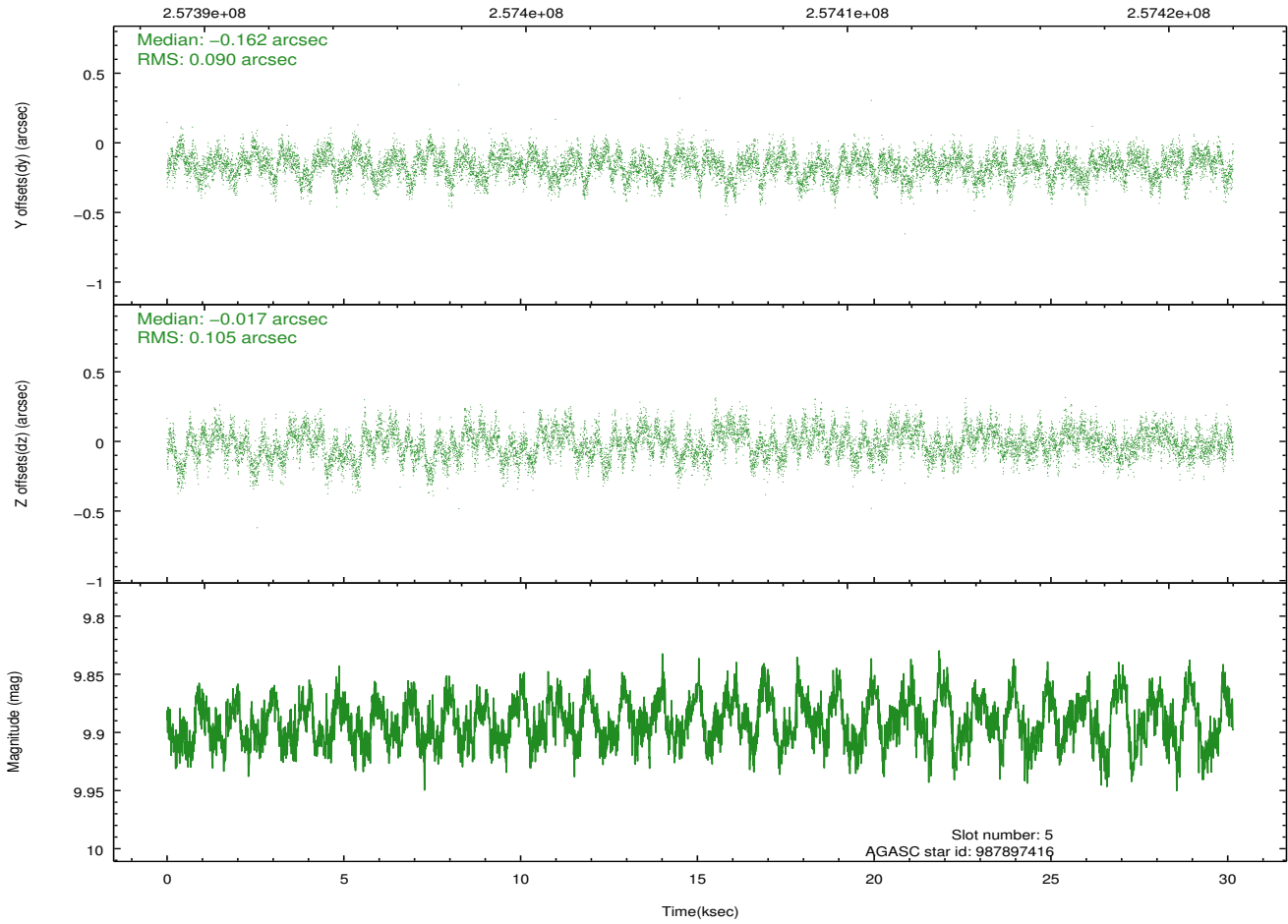
## 2.4.2 Slot 4



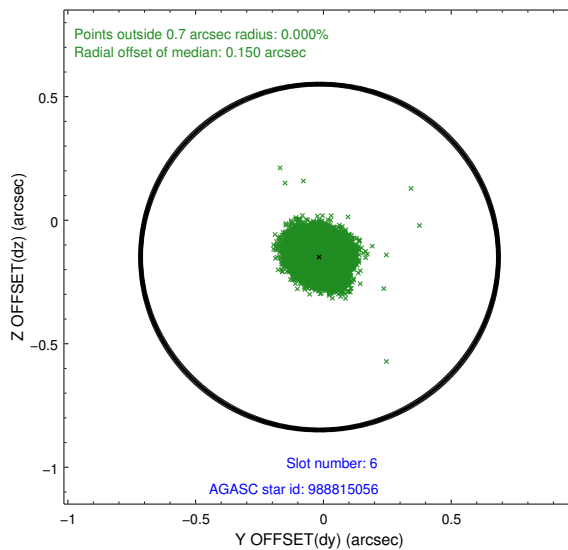
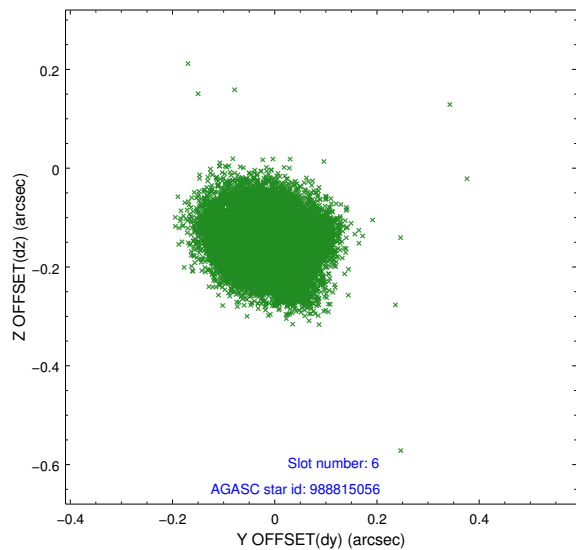
### 2.4.3 Slot 5



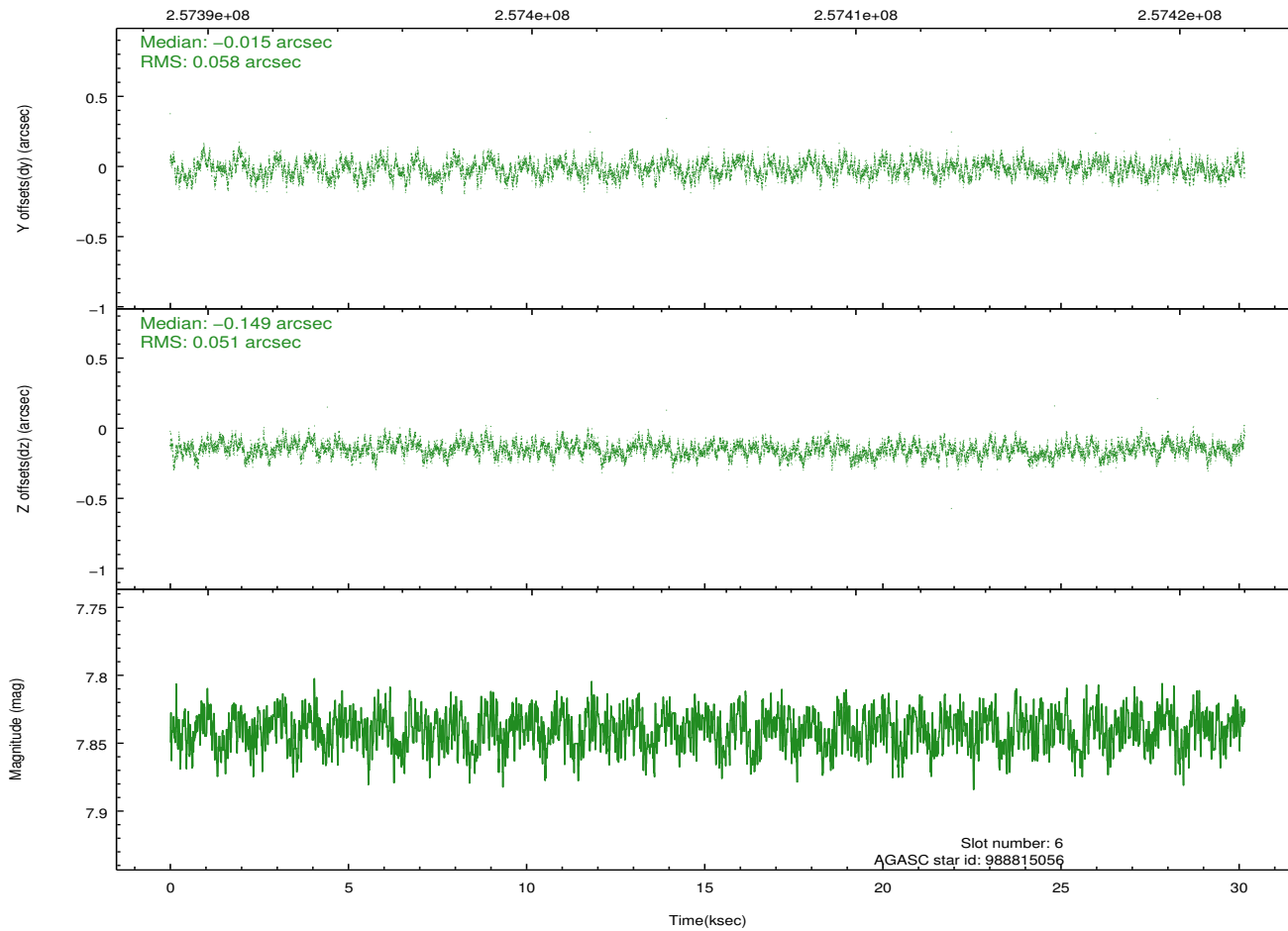
Time (s)



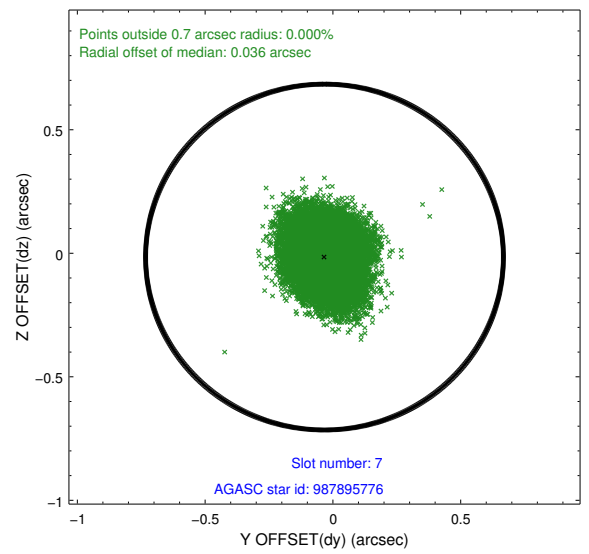
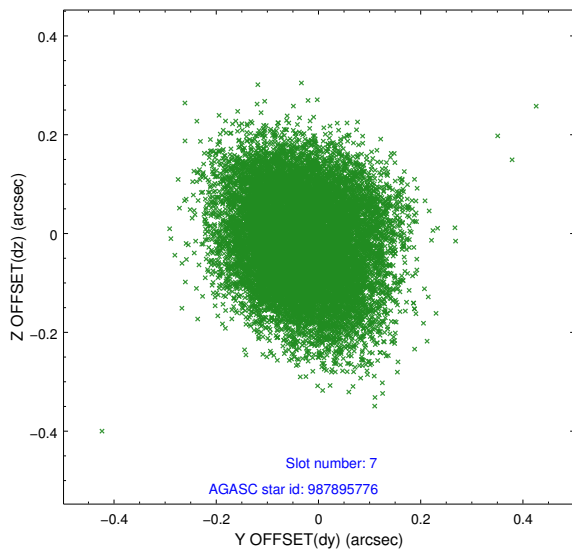
## 2.4.4 Slot 6



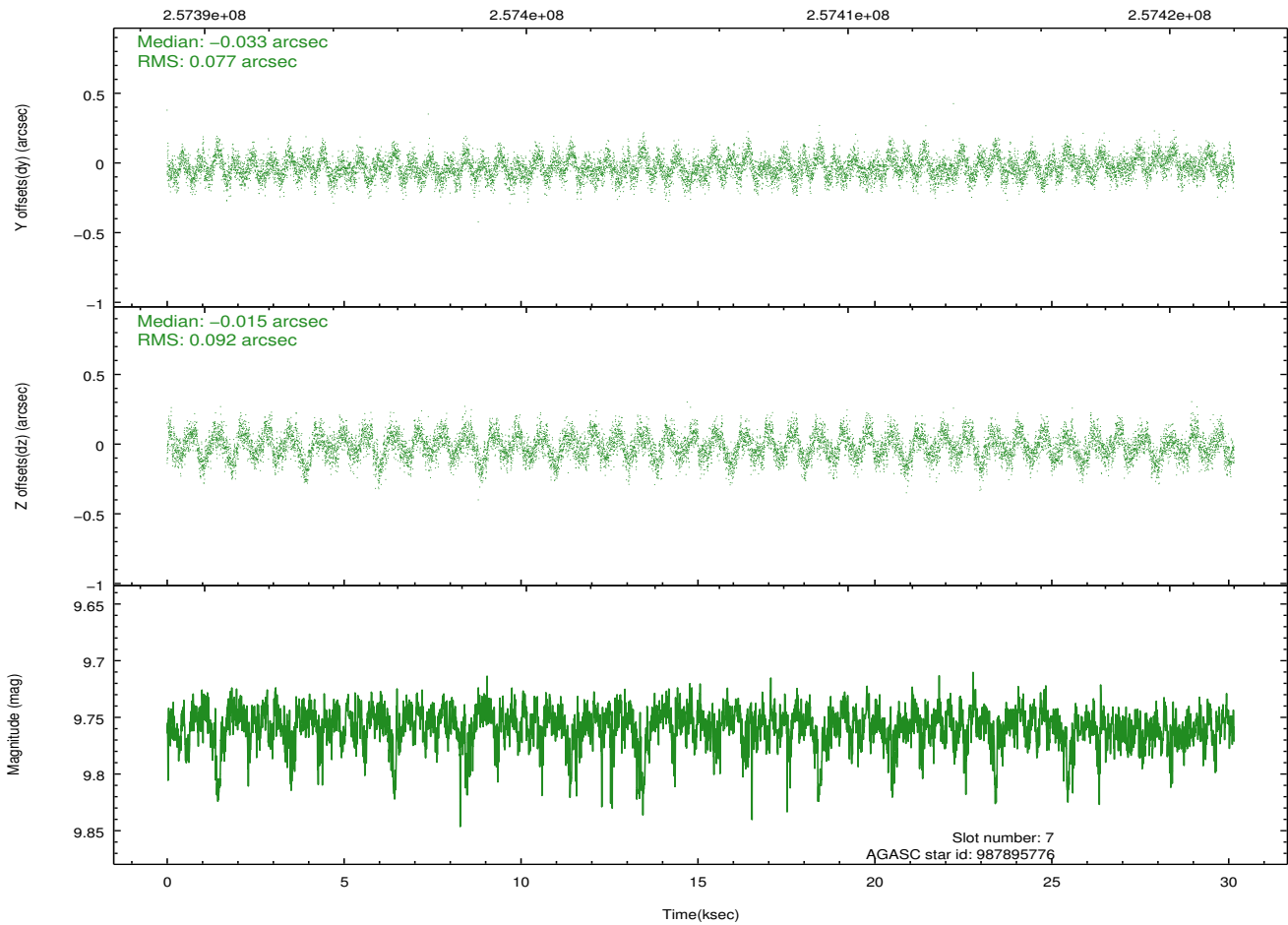
Time (s)



## 2.4.5 Slot 7

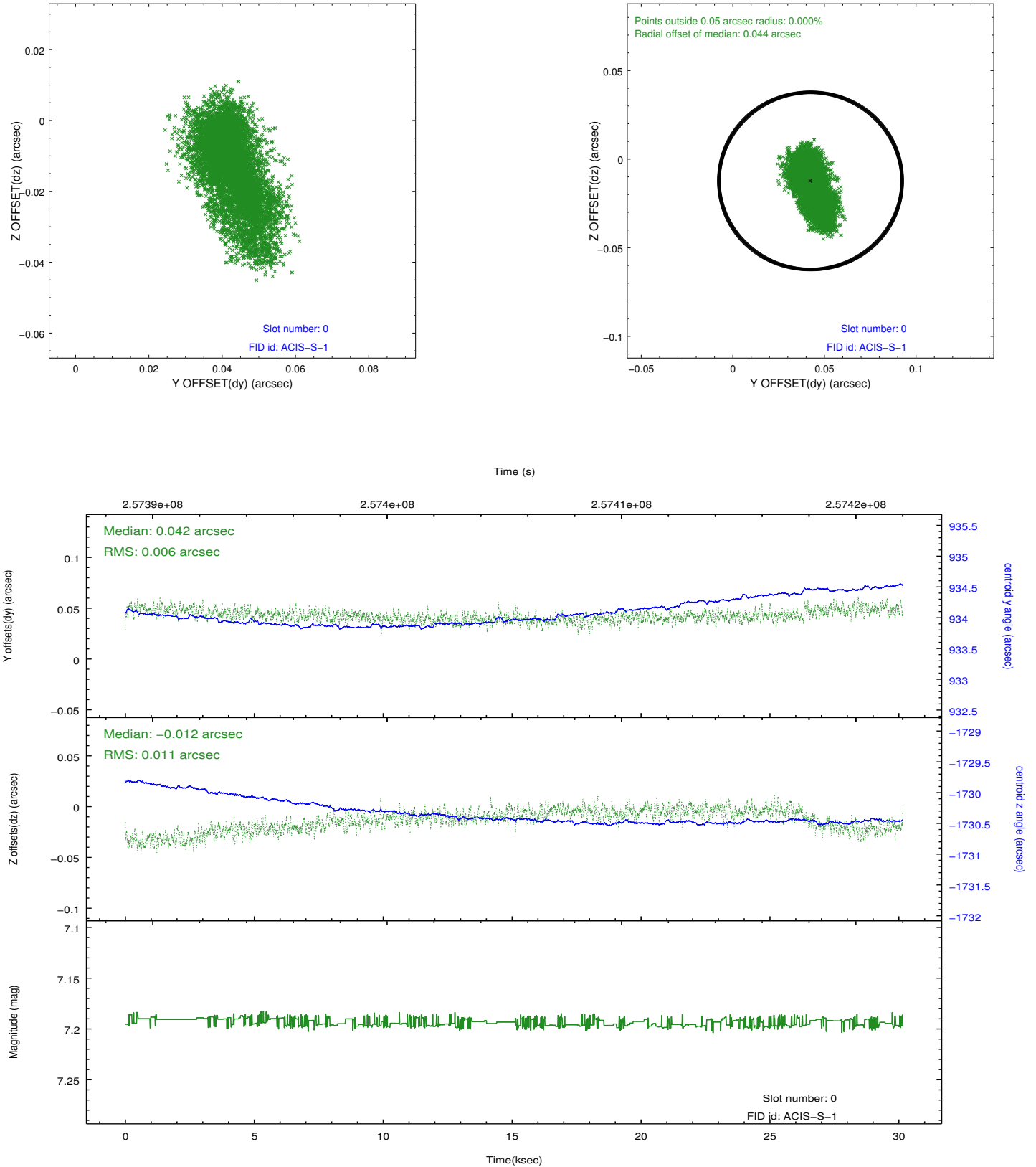


Time (s)

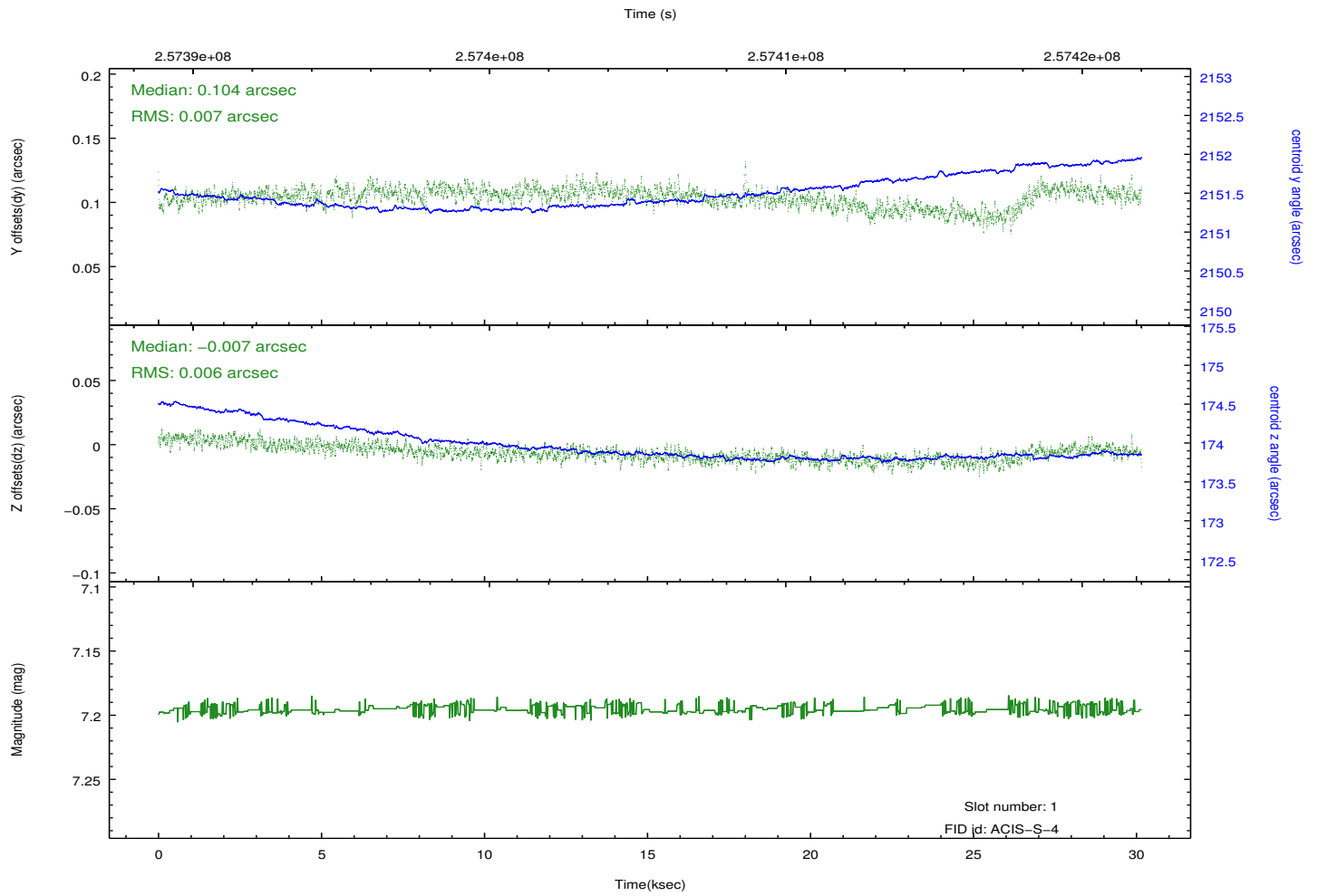
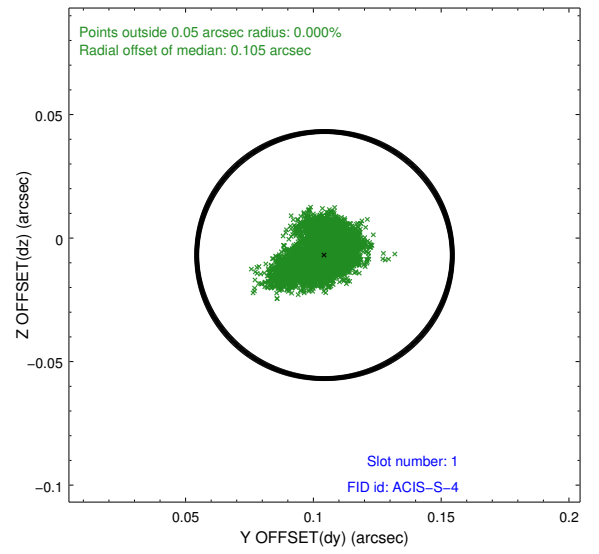
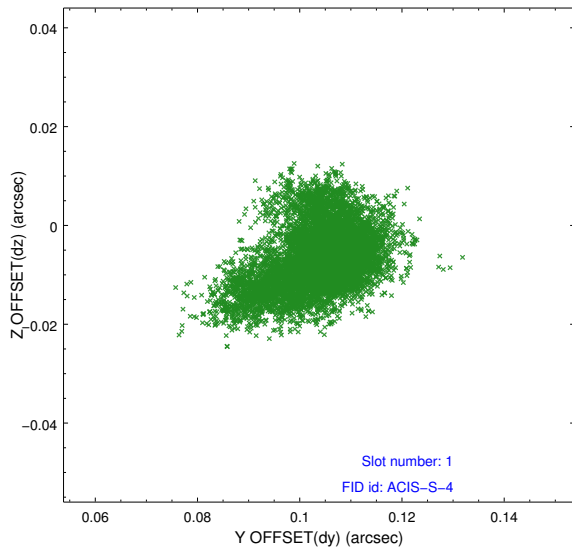


## 2.5 FID Slots

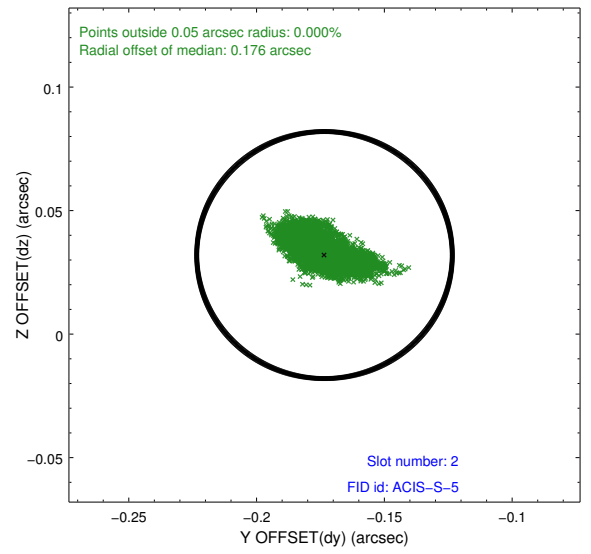
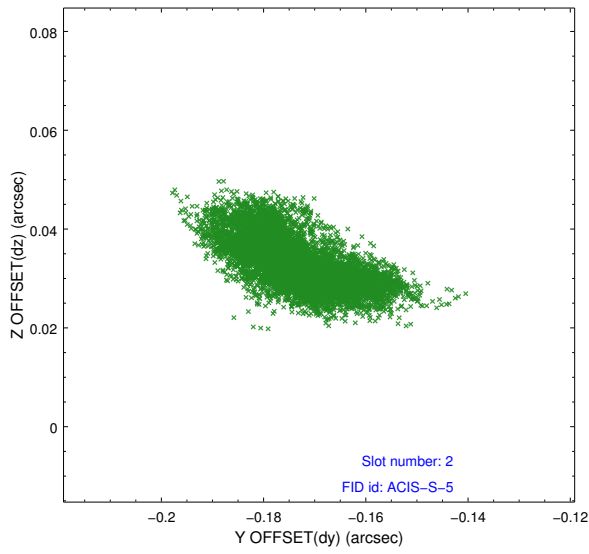
### 2.5.1 Slot 0



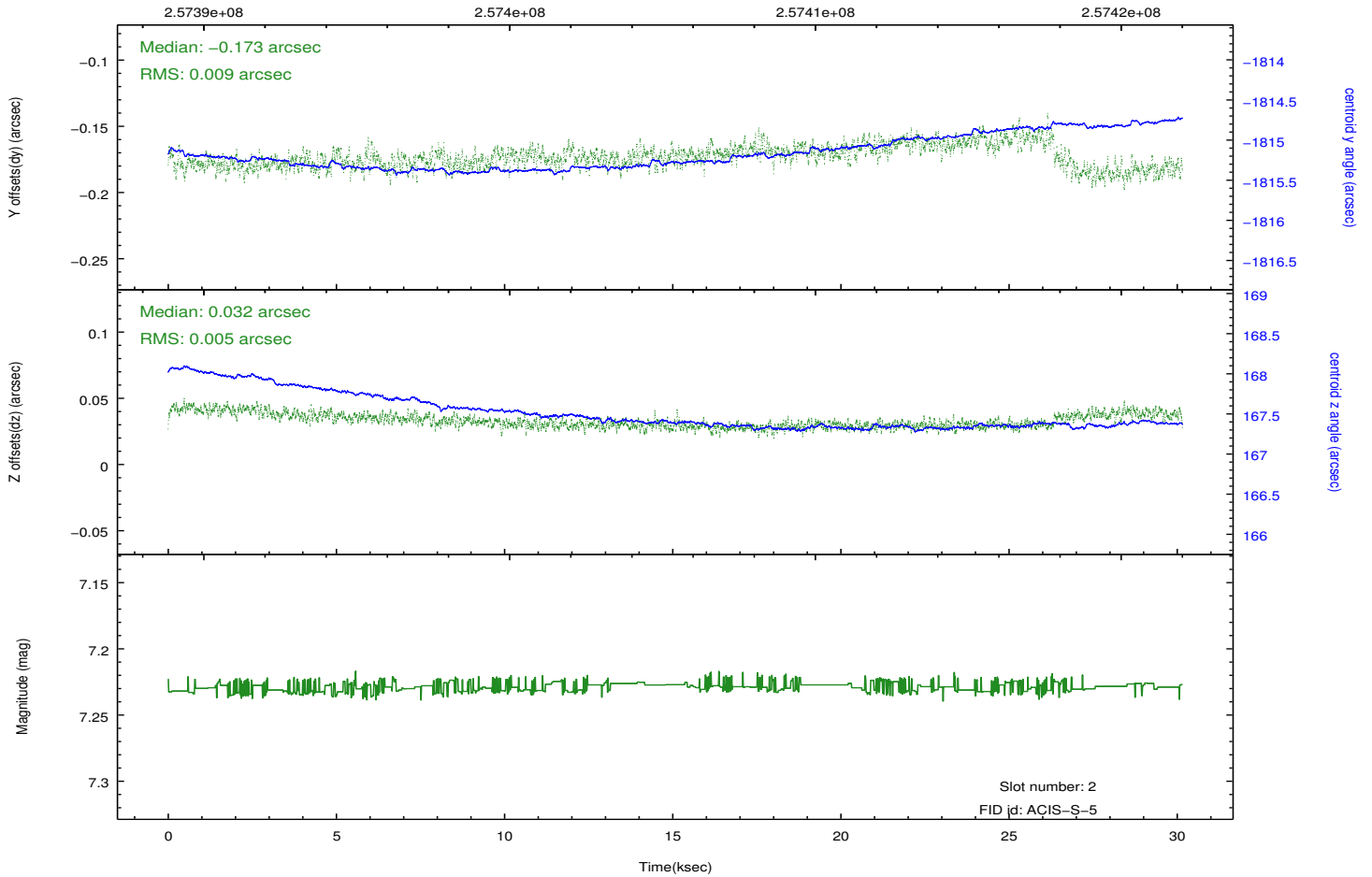
## 2.5.2 Slot 1



### 2.5.3 Slot 2



Time (s)



# A Summary

## A.1 Status

V&V Scientist	Jen Lauer
V&V Date (YYYY-MM-DD)	2012.03.28
V&V Edition	1
V&V Disposition and Status	OK
V&V Charge Time	30.1535998

## A.2 Comments