

# V&V Reference Report

## L2 ASCDS Version : 8.4.4

Observation 7040 - L2 Version 3  
Chandra X-Ray Center

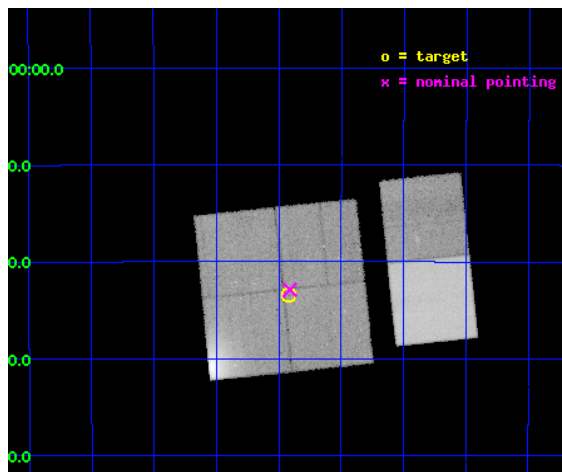
L2 Processing Date : Apr 23 2012

## Contents

<b>1</b>	<b>Front</b>	<b>2</b>
<b>2</b>	<b>OBI</b>	<b>3</b>
2.1	OBI . . . . .	3
2.1.1	Images . . . . .	3
2.1.2	Bias . . . . .	3
2.1.3	Parameters . . . . .	4
2.1.4	Events . . . . .	4
2.2	Compared Parameters . . . . .	5
2.3	Aspect . . . . .	6
2.4	Star Slots . . . . .	9
2.4.1	Slot 3 . . . . .	9
2.4.2	Slot 4 . . . . .	10
2.4.3	Slot 5 . . . . .	11
2.4.4	Slot 6 . . . . .	12
2.4.5	Slot 7 . . . . .	13
2.5	FID Slots . . . . .	14
2.5.1	Slot 0 . . . . .	14
2.5.2	Slot 1 . . . . .	15
2.5.3	Slot 2 . . . . .	16
<b>A</b>	<b>Summary</b>	<b>17</b>
A.1	Status . . . . .	17
A.2	Comments . . . . .	17

# 1 Front

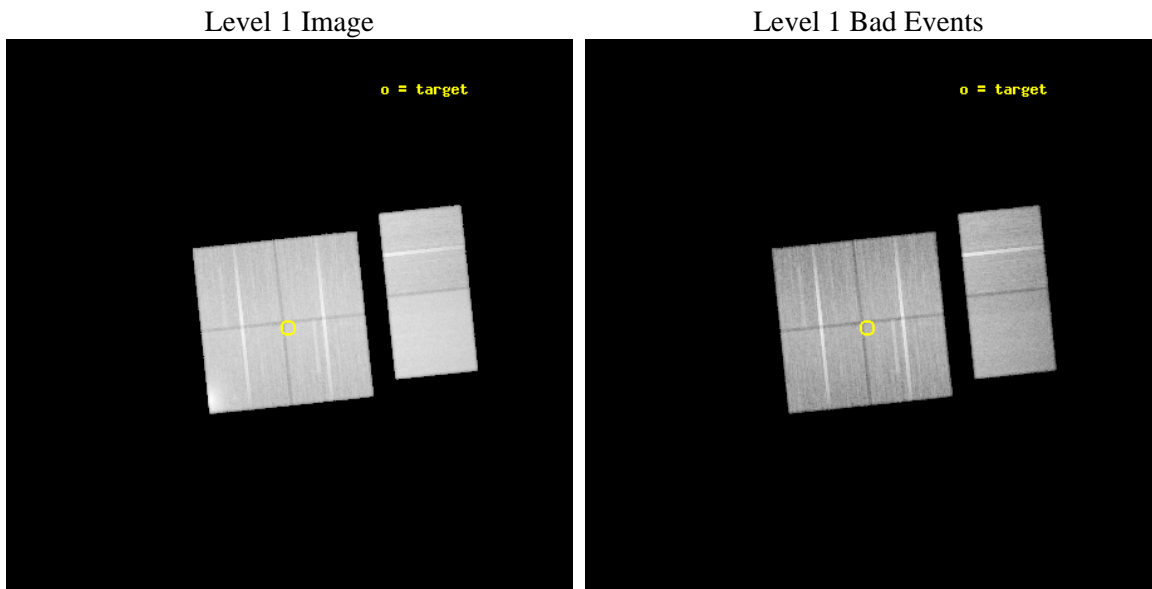
seq_num	900456	Sequence number
obs_id	7040	Observation id
title	A Legacy Study of Stellar Life Cycles at the Galactic Center	Propo
observer	Dr. Michael Muno	Principal investigator
object	Deep GCS 8	Source name
dtcycle	0	&#160
cycle	P	events from which exps? Prim/Second/Both
ra_targ	266.354583	Observer's specified target RA [deg]
dec_targ	-29.389889	Observer's specified target Dec [deg]
ra_nom	266.35277575245	Nominal RA [deg]
dec_nom	-29.381955311872	Nominal Dec [deg]
roll_nom	84.027530159506	Nominal Roll [deg]
revision	3	Processing version of data
ontime	37142.399861693	Sum of GTIs [s]
livetime	36672.080430176	Livetime [s]
ontime0	37139.158881426	Sum of GTIs [s]
ontime1	37142.399861693	Sum of GTIs [s]
ontime2	37139.15889138	Sum of GTIs [s]
ontime3	37142.399861693	Sum of GTIs [s]
ontime6	37142.399861693	Sum of GTIs [s]
ontime7	37142.399861693	Sum of GTIs [s]
l2events	494523	Number of level 2 events



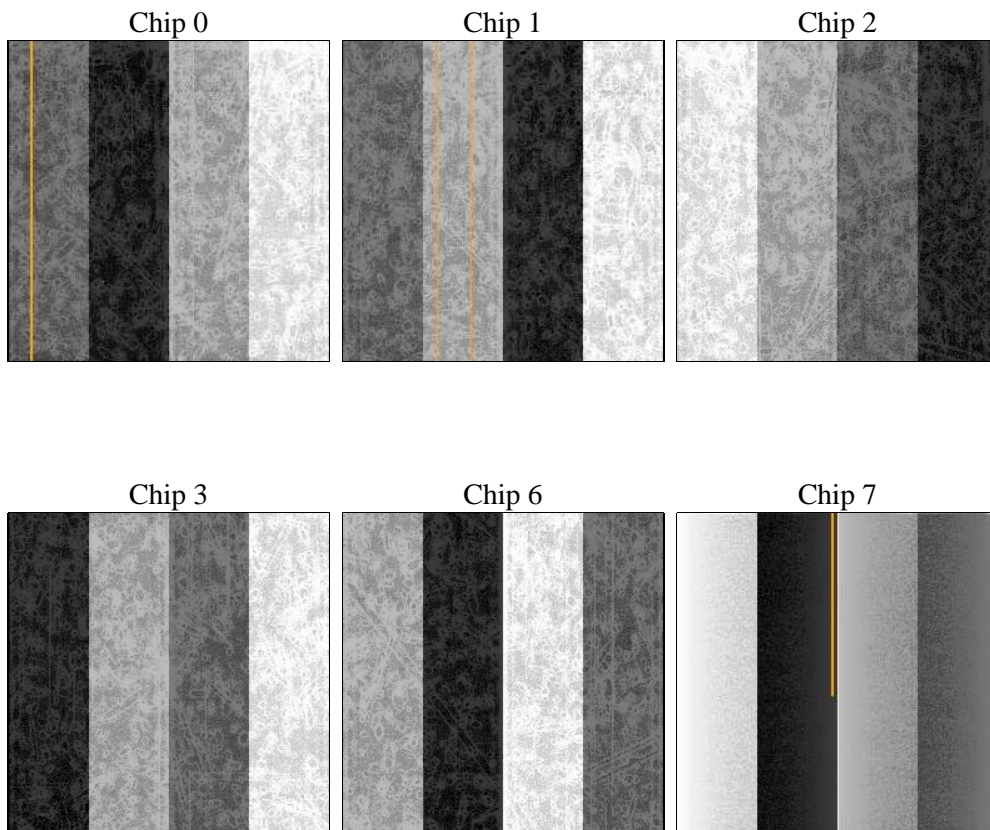
## 2 OBI

### 2.1 OBI

#### 2.1.1 Images



#### 2.1.2 Bias



### 2.1.3 Parameters

obi_num	0	Obi number	sched_exp_time	37000.000000	[s] Scheduled observation exposure time
ascdsver	8.4.4	Processing system revision	ontime	37142.399861693	Sum of GTIs [s]
caldbver	4.4.9	&#160	ontime0	37139.158881426	Sum of GTIs [s]
date	2012-04-23T21:32:01	Date and time of file creation	ontime1	37142.399861693	Sum of GTIs [s]
revision	3	Processing version of data	ontime2	37139.15889138	Sum of GTIs [s]
			ontime3	37142.399861693	Sum of GTIs [s]
			ontime6	37142.399861693	Sum of GTIs [s]
			ontime7	37142.399861693	Sum of GTIs [s]
			l1events	2371098	Number of level 1 events

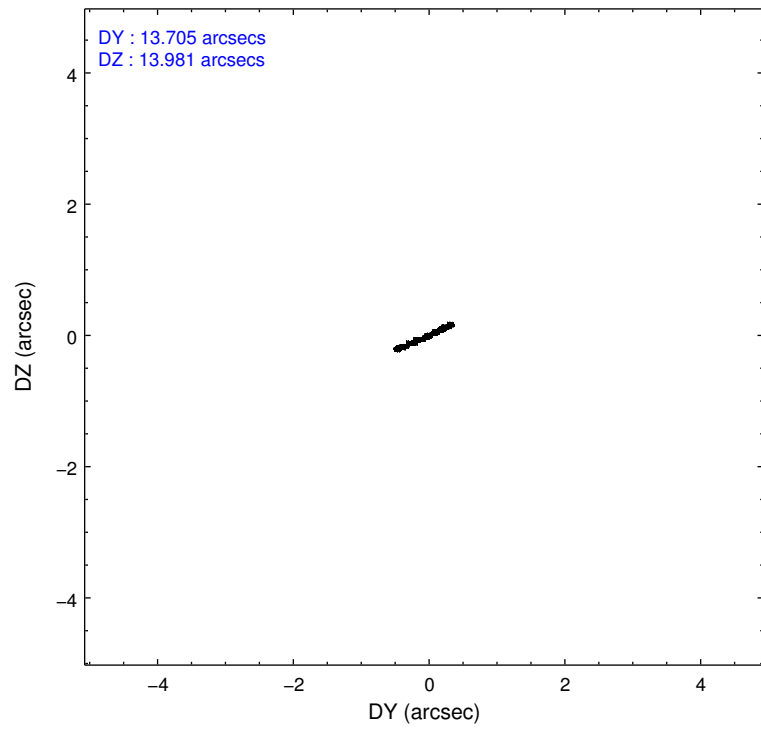
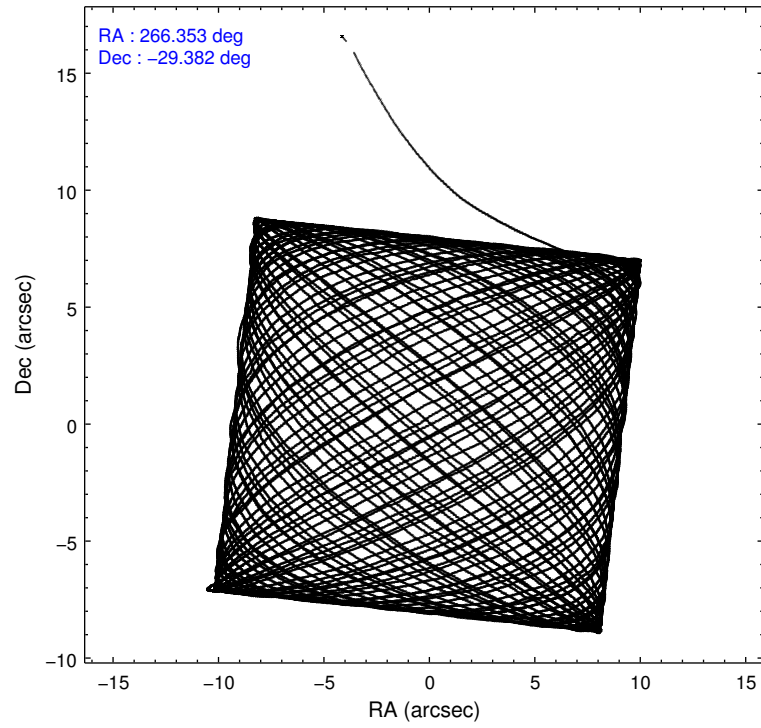
### 2.1.4 Events

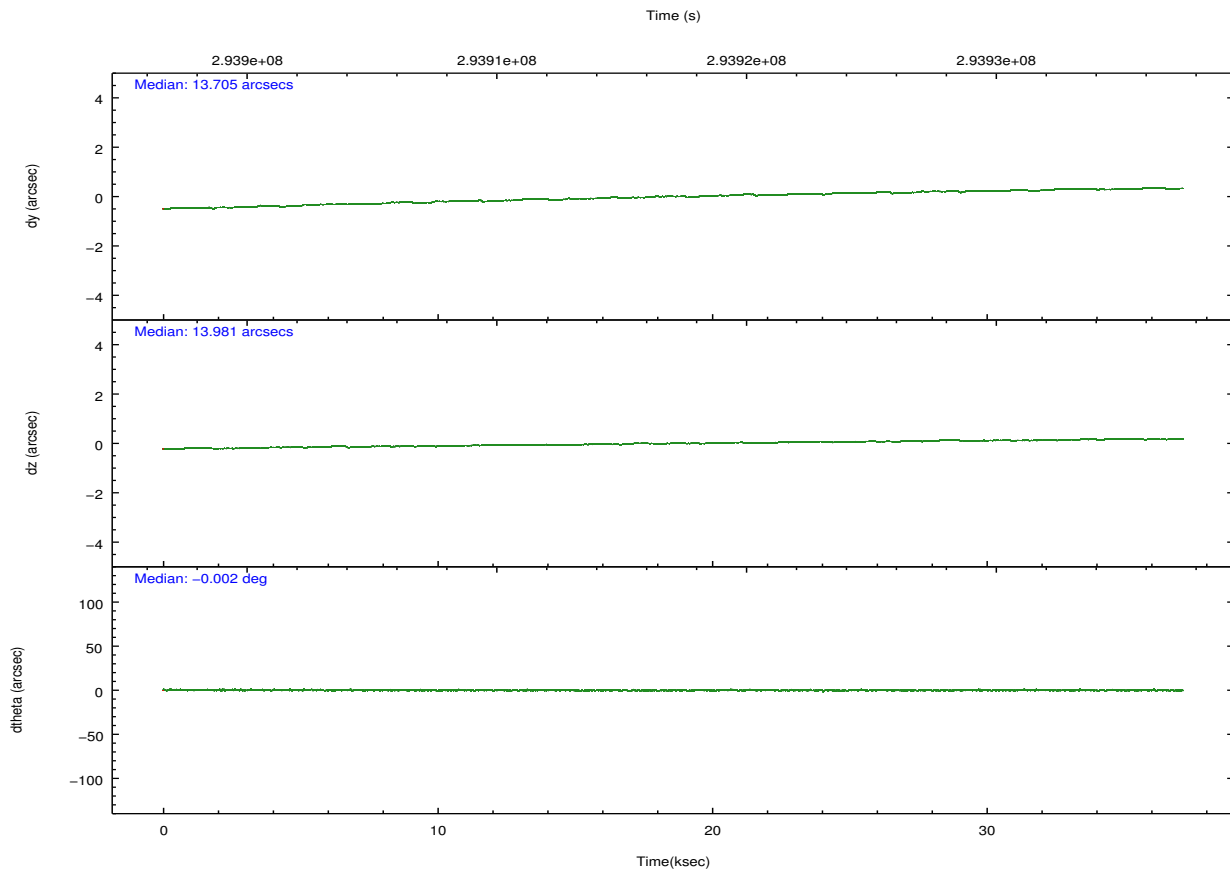
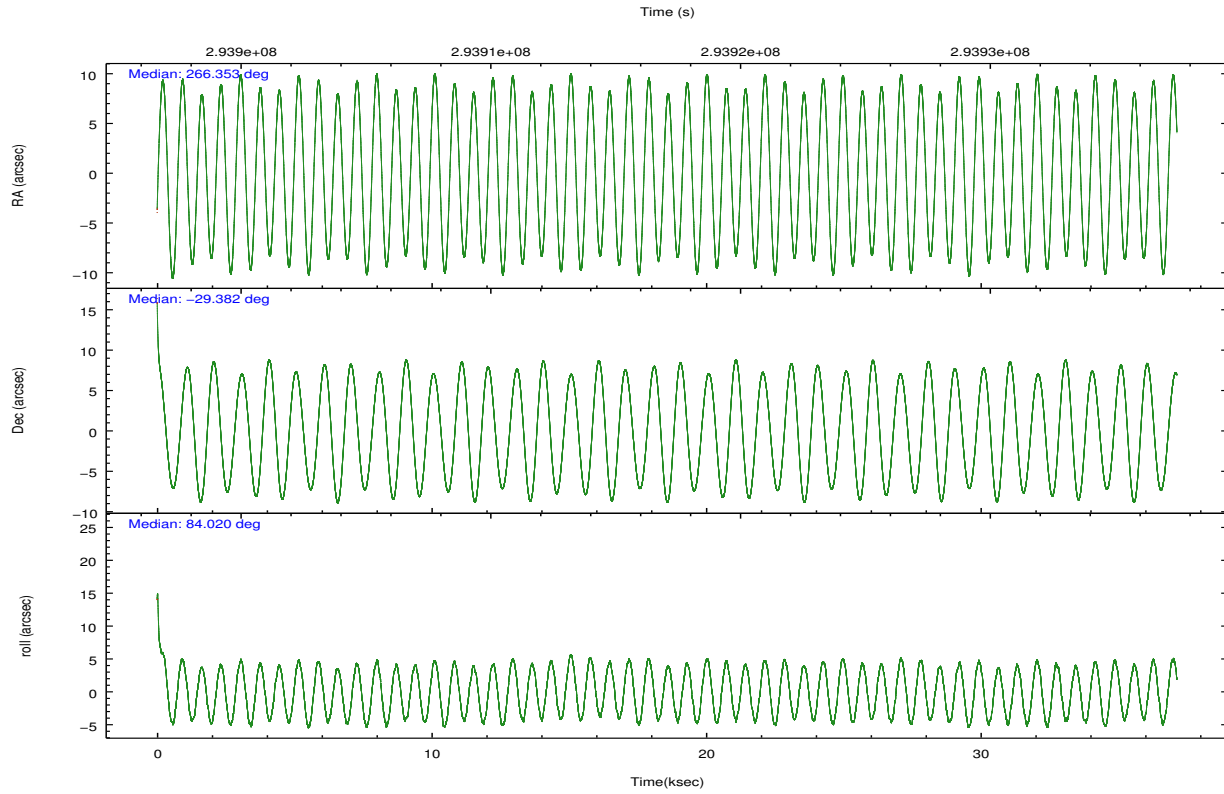
	ccd 0	ccd 1	ccd 2	ccd 3	ccd 6	ccd 7		ccd 0	ccd 1	ccd 2	ccd 3	ccd 6	ccd 7
level 1 events	345110	409410	369681	367947	378542	500408	grade 0 events	30803	69122	26655	25280	21348	18767
rejected events	286292	292132	317084	316786	329570	294082		8%	16%	7%	6%	5%	3%
rejected %	82%	71%	85%	86%	87%	58%	grade 1 events	288	457	288	304	212	498
								0%	0%	0%	0%	0%	0%
							grade 2 events	11363	20405	10320	9755	10603	43447
								3%	4%	2%	2%	2%	8%
							grade 3 events	4874	7737	4568	4600	4370	18321
								1%	1%	1%	1%	1%	3%
							grade 4 events	4527	7825	4441	4527	4421	18221
								1%	1%	1%	1%	1%	3%
							grade 5 events	14291	15860	13657	16620	17092	46797
								4%	3%	3%	4%	4%	9%
							grade 6 events	8581	13799	7989	8353	9647	113396
								2%	3%	2%	2%	2%	22%
							grade 7 events	270383	274205	301763	298508	310849	240961
								78%	66%	81%	81%	82%	48%

## 2.2 Compared Parameters

Parameter	Planned	Actual	Parameter	Planned	Actual
Instrument	ACIS	ACIS	Obspar format version number	7	7
Detector	ACIS-012367	ACIS-012367	Obspar file type	PREDICTED	ACTUAL
Grating	NONE	NONE	Obspar update status	NONE	UPDATED
Data mode	FAINT	FAINT	Number of optional ACIS chips dropped	0	0
Observation mode	POINTING	POINTING	On-chip summing requested	N	N
[deg] Pointing RA	266.365730	266.3527757524546	Subarray requested	NONE	NONE
[deg] Pointing Dec	-29.407038	-29.38195531187174	Alternating exposures requested	N	N
[deg] Pointing Roll	83.825197	84.02753015950559	[s] Primary exposure time	0.000000	3.2
[mm] SIM focus pos	-0.782348	-0.7809083437167272			
[mm] SIM defocus	0	0.001439871863259334			
[mm] SIM translation stage pos	-233.592463	-233.5874344608287			
[mm] SIM translation stage offset	0	-0.005018542100998502			
[s] Observation start time (MET)	293898626.184000	293897045.77563			
Observation start date	2007-04-25T14:29:21	2007-04-25T14:04:05			
[s] Observation end time (MET)	293935626.184000	293936089.56499			
Observation end date	2007-04-26T00:46:01	2007-04-26T00:54:49			
Read mode	TIMED	TIMED			

## 2.3 Aspect





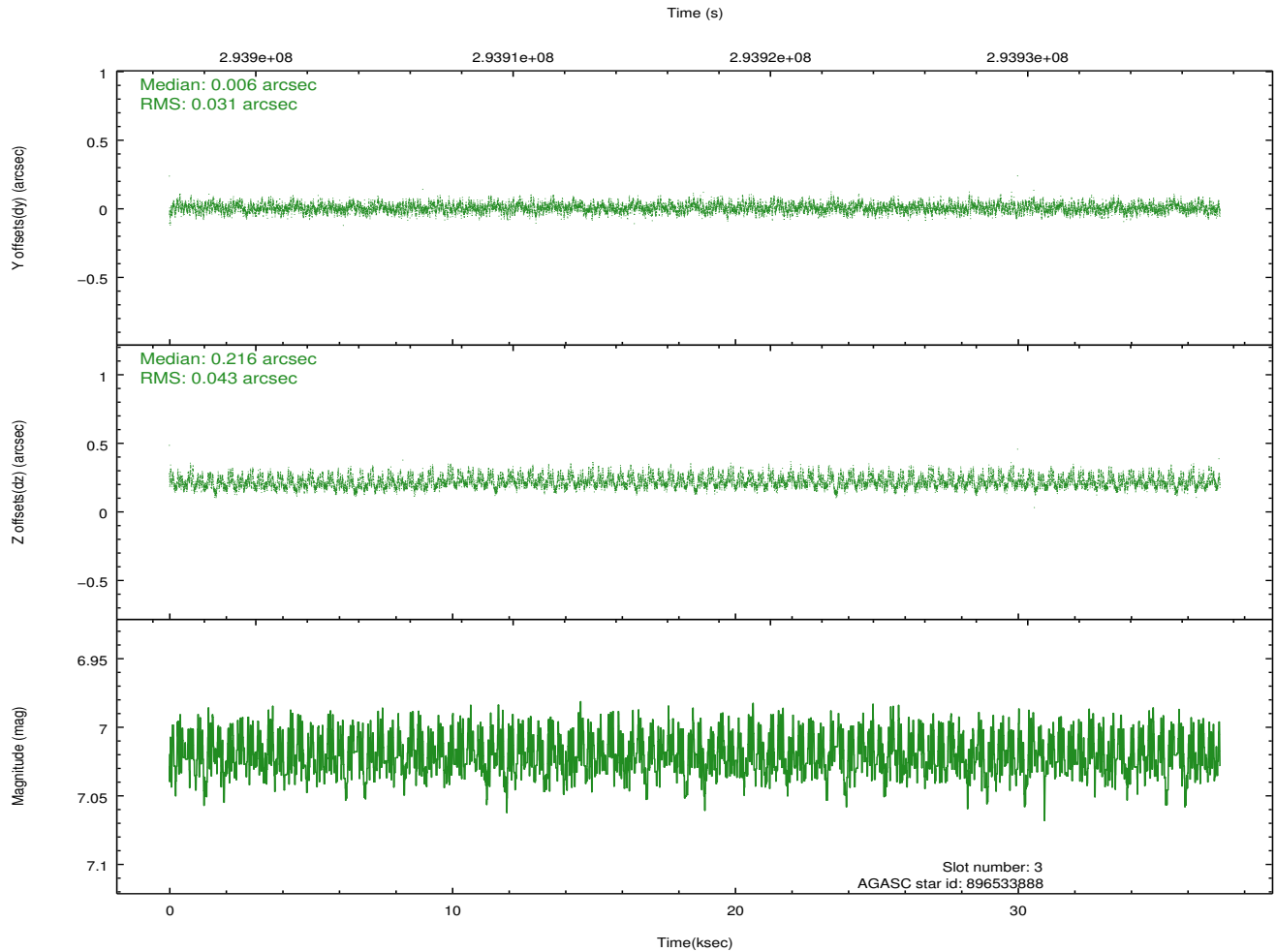
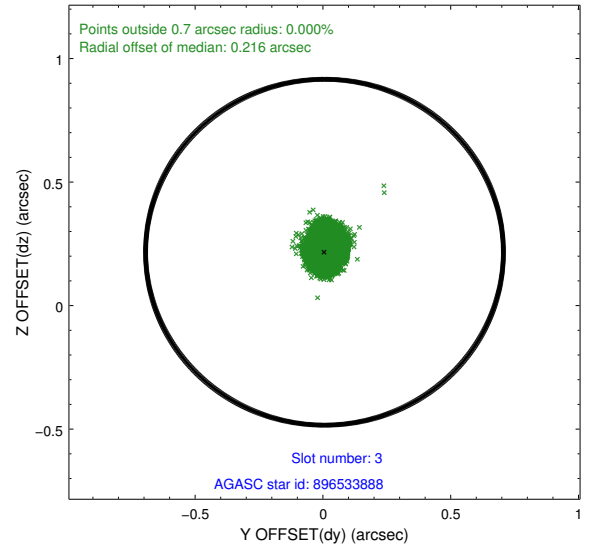
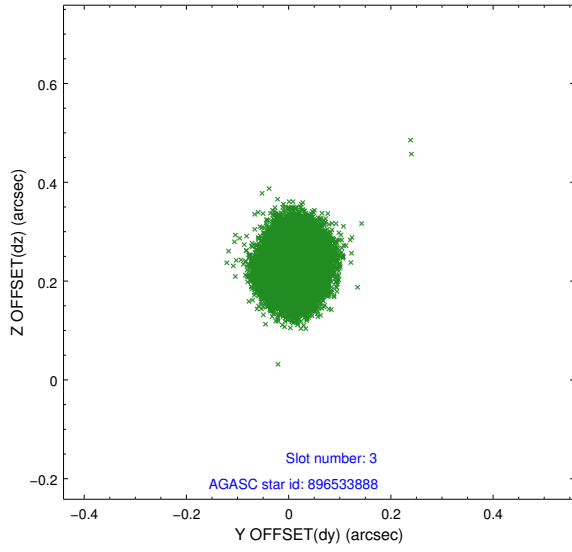
### Slot Statistics

slot	status	id	mag	n_pts	med_dy	med_dz	dr1	dr2	ra	dec	mean_y	mean_z
0	FID	ACIS-I-1	7.23	9060	0.036	0.011	0.009	0.016	0.000000	0.000000	925.87	-837.53
1	FID	ACIS-I-5	7.22	9058	-0.224	0.042	0.008	0.013	0.000000	0.000000	-1822.50	1059.96
2	FID	ACIS-I-6	7.24	9061	0.096	0.017	0.008	0.013	0.000000	0.000000	391.42	1704.49
3	GUIDE	896533888	7.02	18121	0.006	0.216	0.056	0.090	266.666434	-29.392757	151.65	-931.99
4	GUIDE	896537776	7.52	18119	0.137	0.207	0.053	0.085	266.655684	-29.665673	-828.81	-1001.91
5	GUIDE	896540808	7.48	18115	-0.189	-0.079	0.050	0.078	265.985401	-29.308604	221.72	1224.88
6	GUIDE	896403224	8.27	18116	0.116	-0.313	0.071	0.112	265.612825	-29.438915	-375.76	2333.32
7	GUIDE	896532952	9.03	18104	-0.070	-0.038	0.071	0.117	266.383644	-28.787617	2223.04	184.07

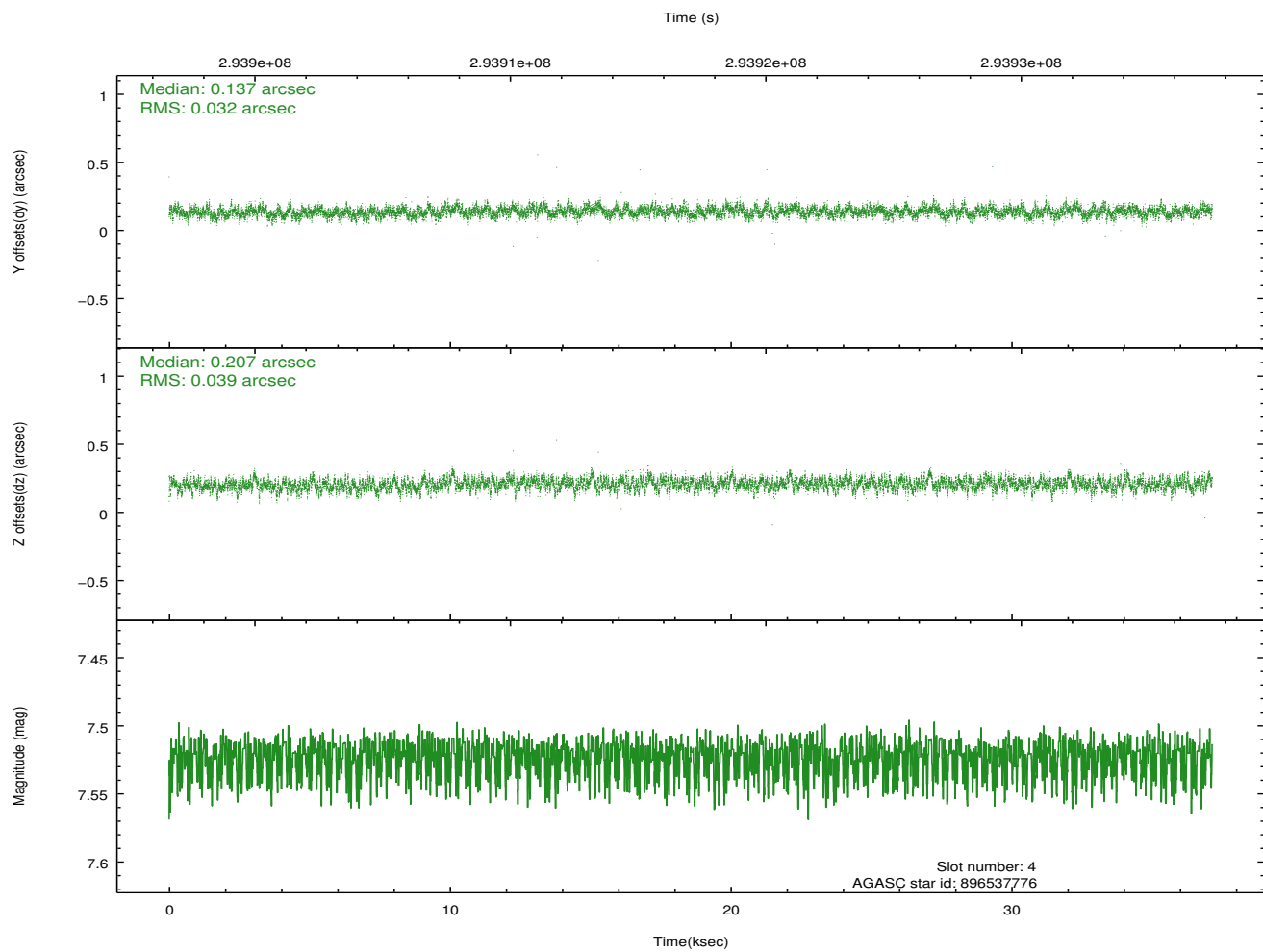
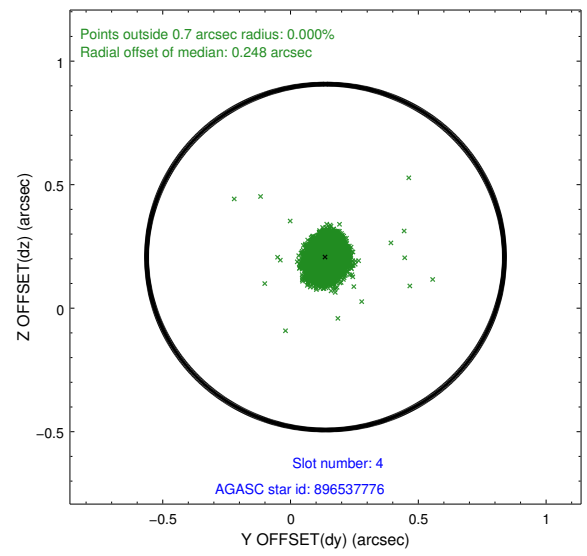
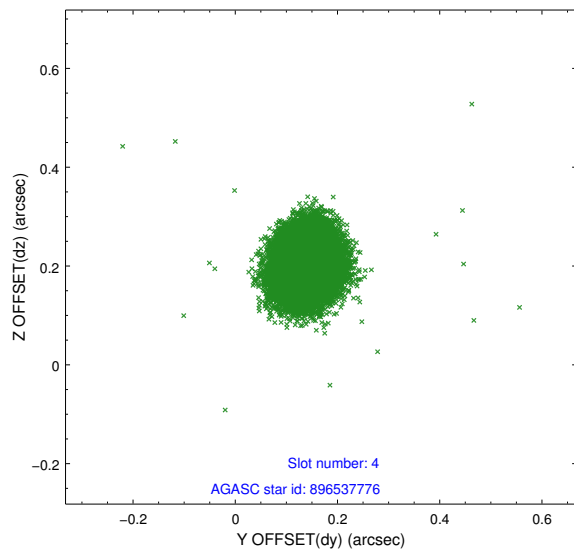
∞

## 2.4 Star Slots

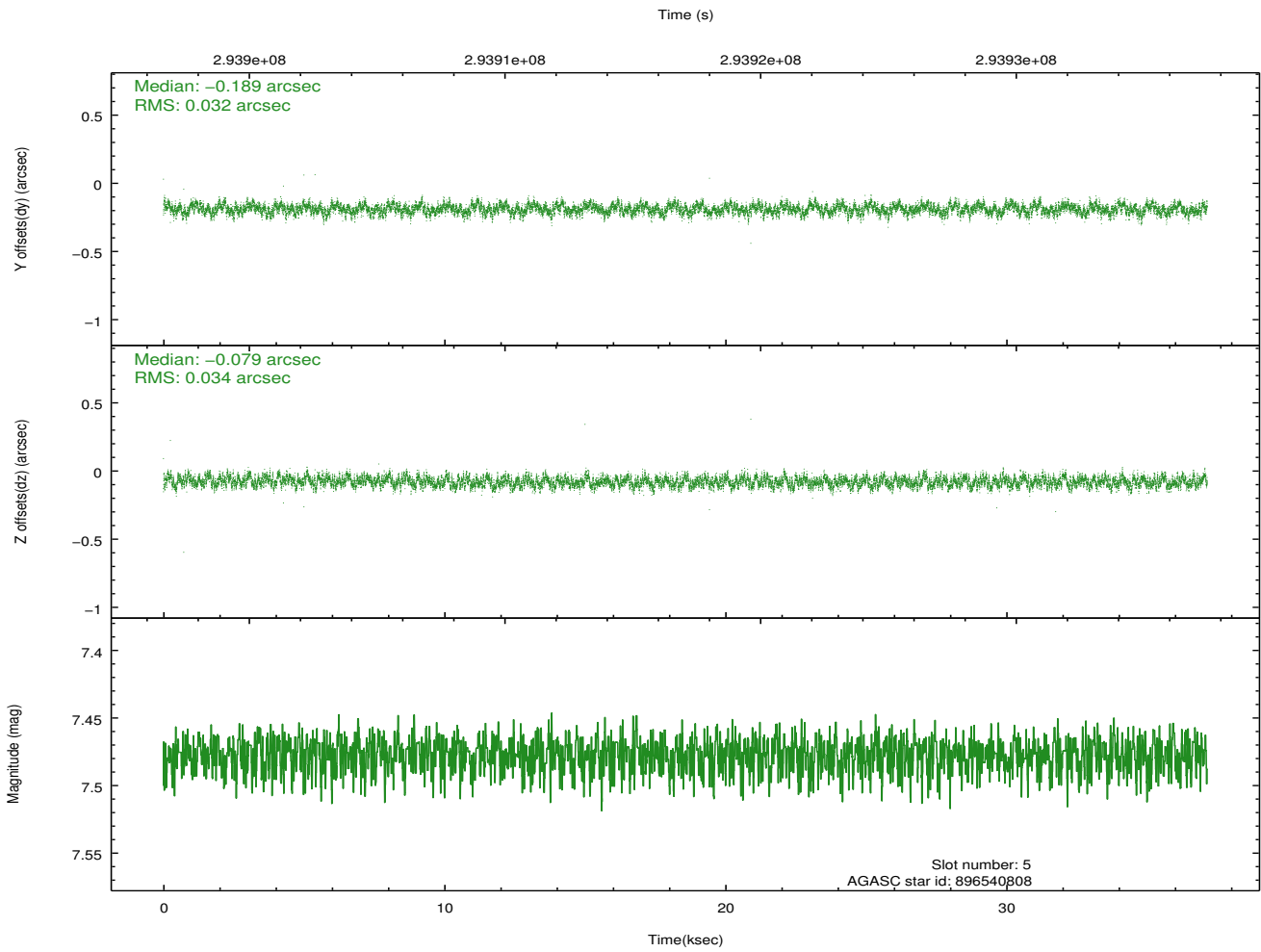
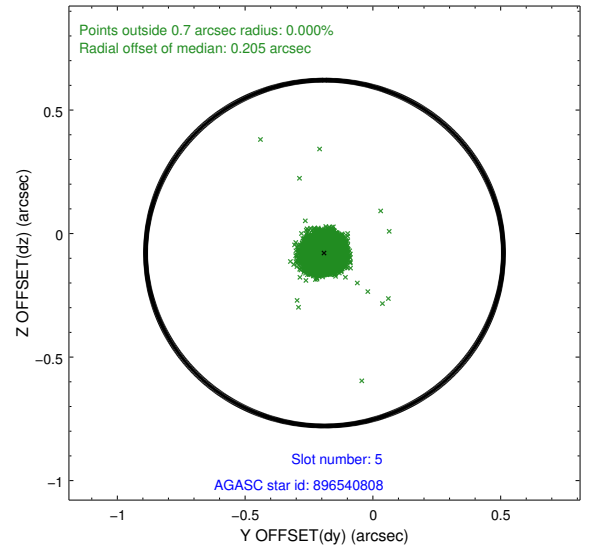
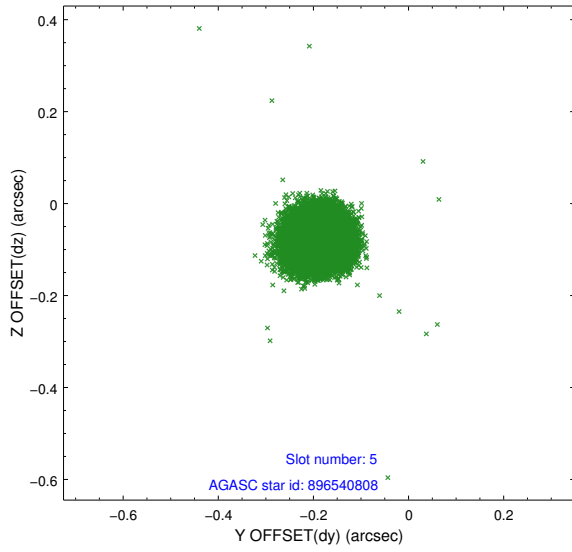
### 2.4.1 Slot 3



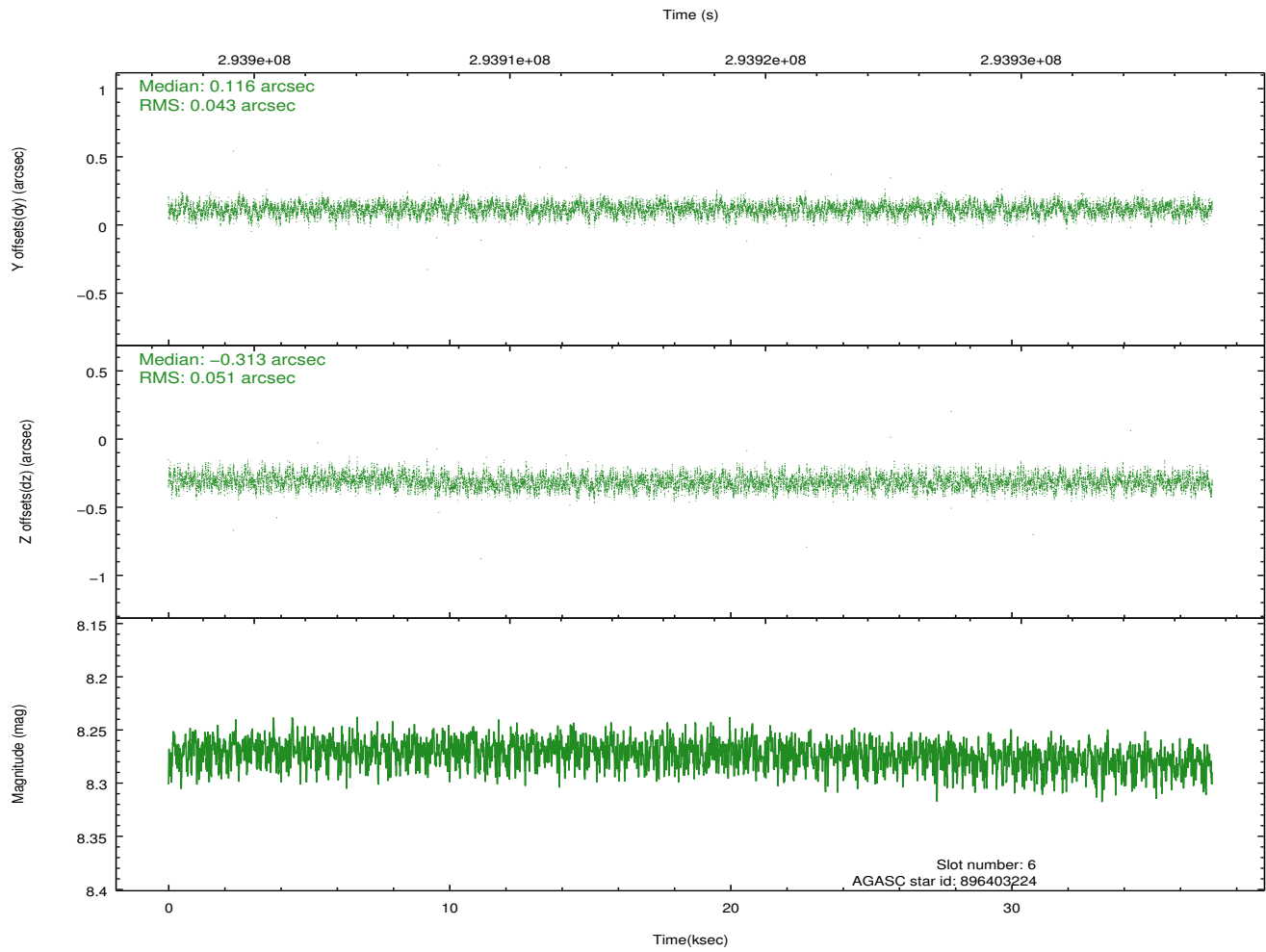
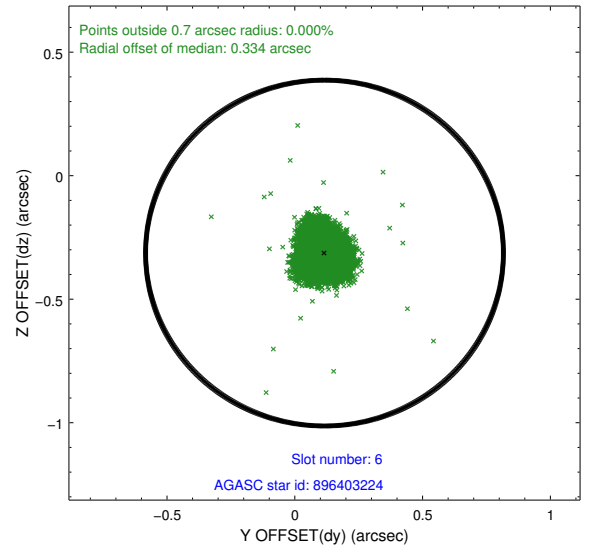
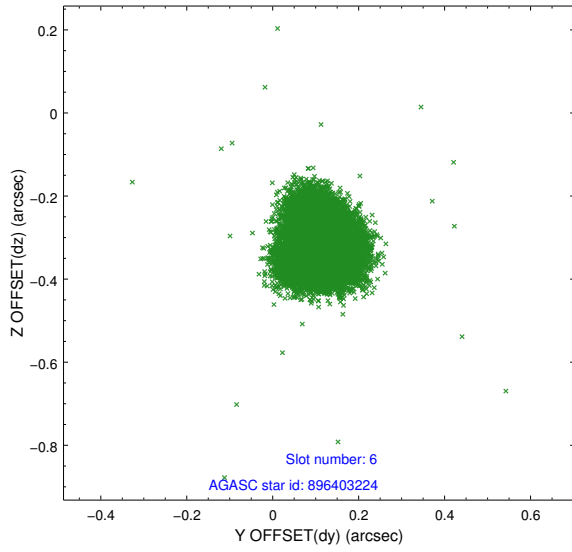
## 2.4.2 Slot 4



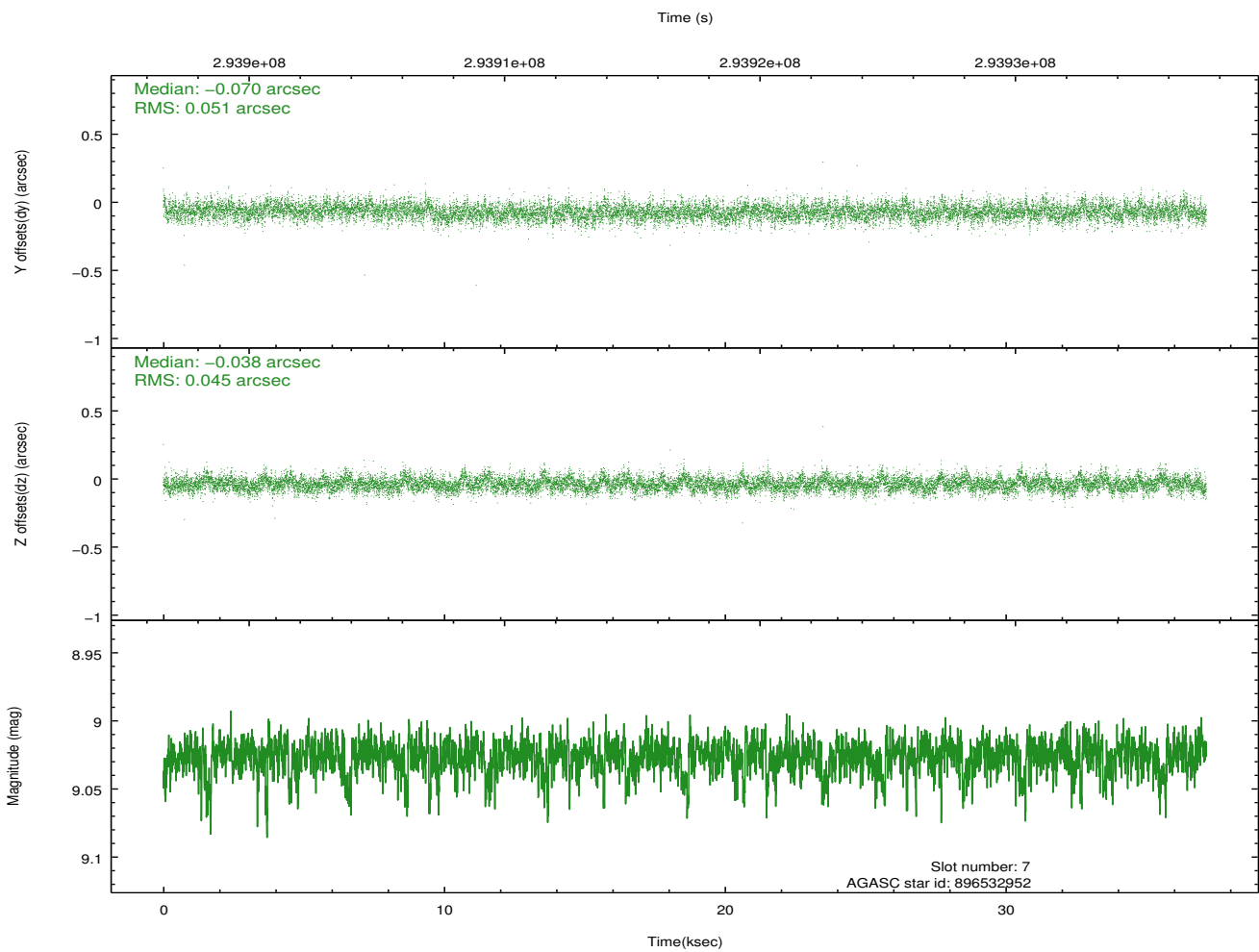
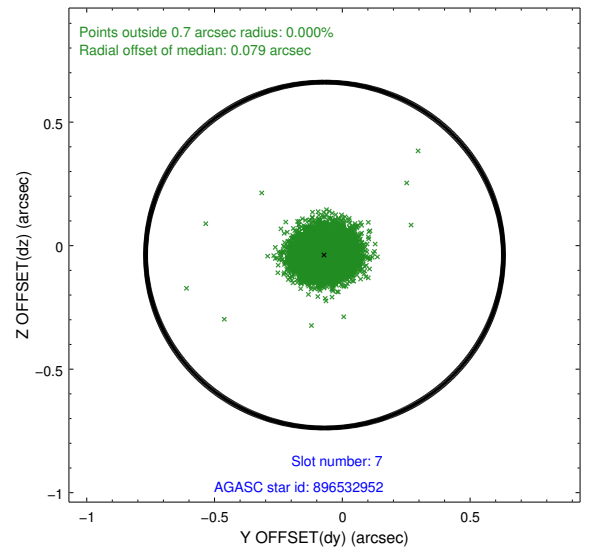
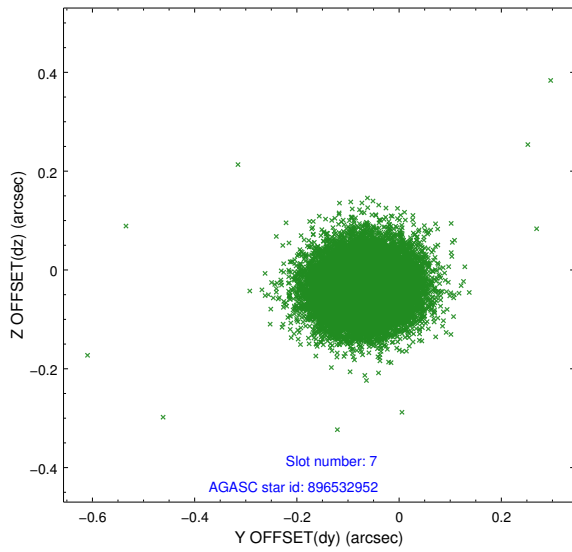
### 2.4.3 Slot 5



## 2.4.4 Slot 6

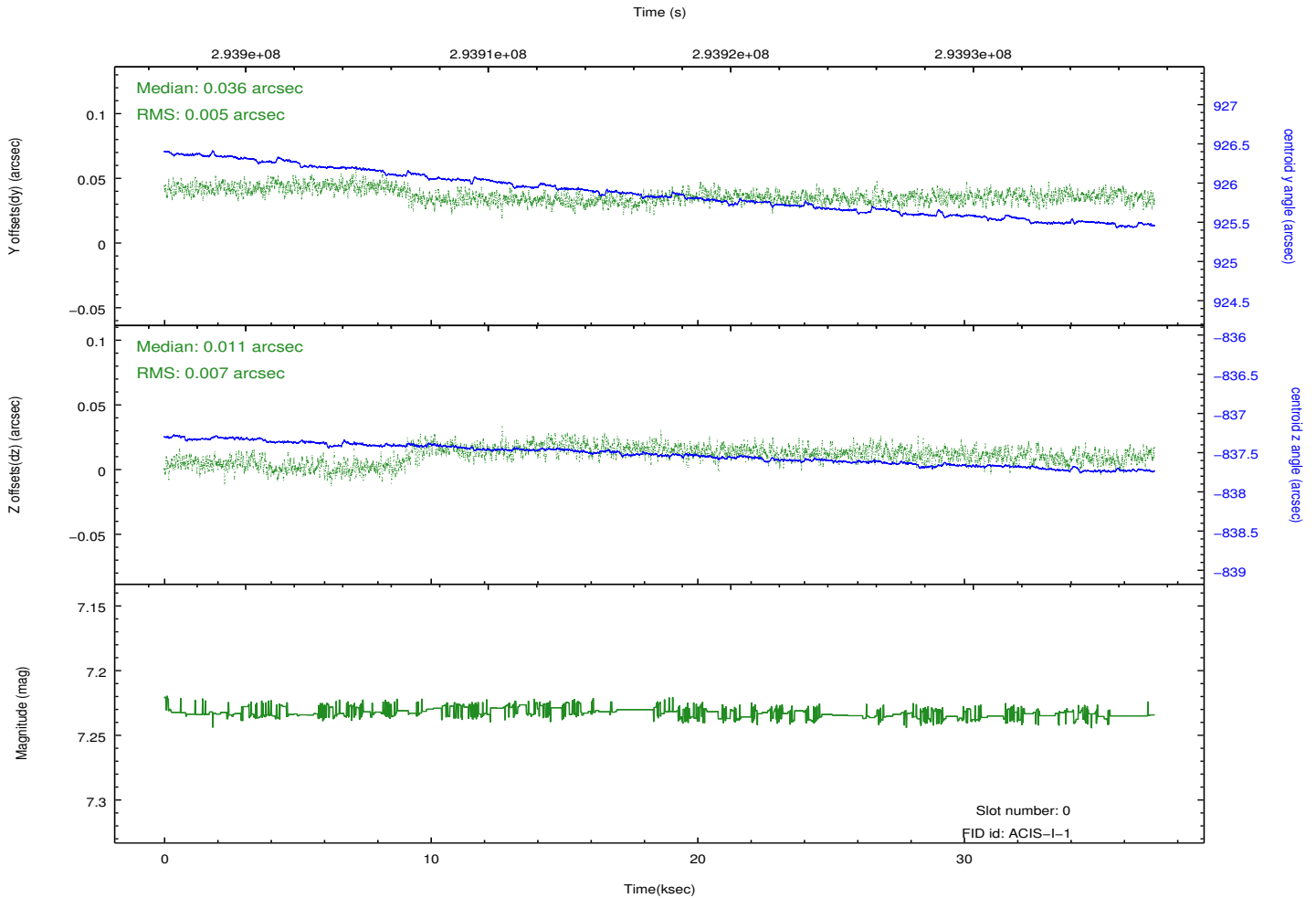
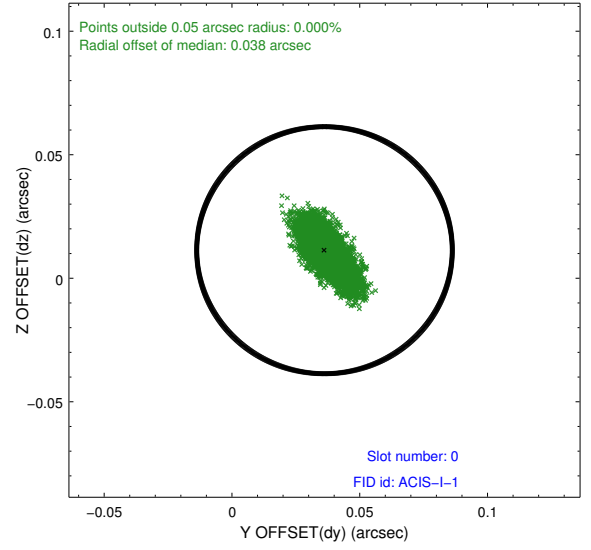
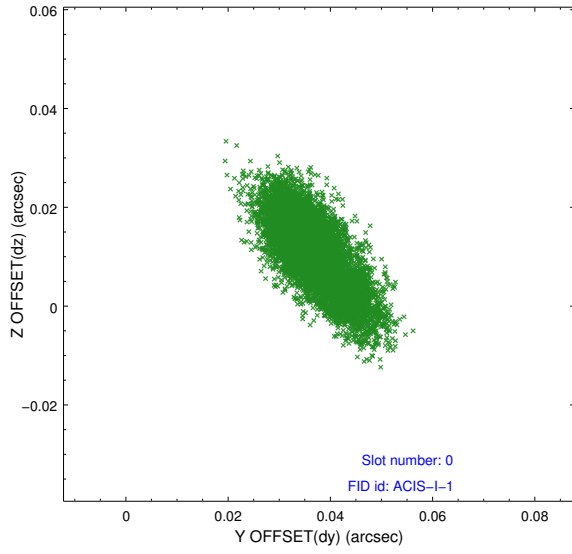


## 2.4.5 Slot 7

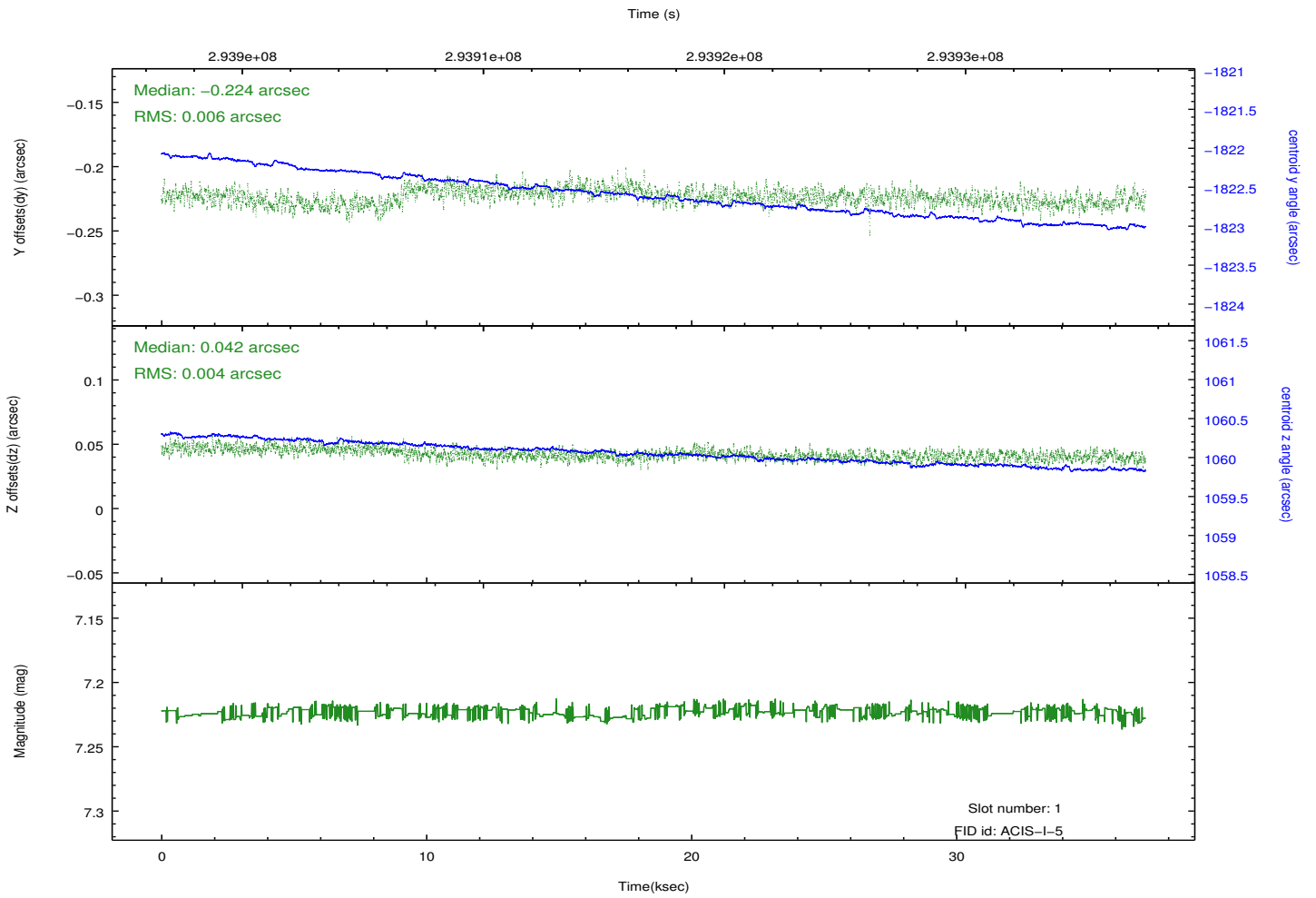
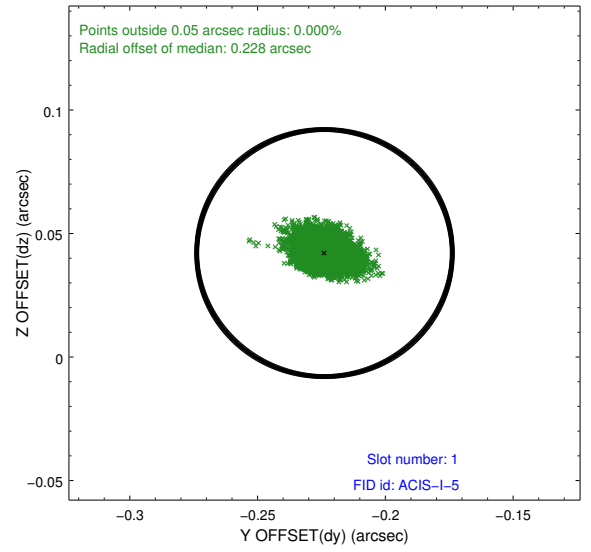
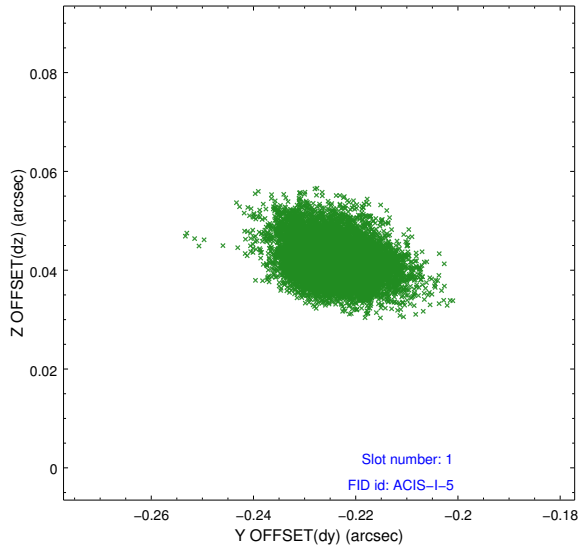


## 2.5 FID Slots

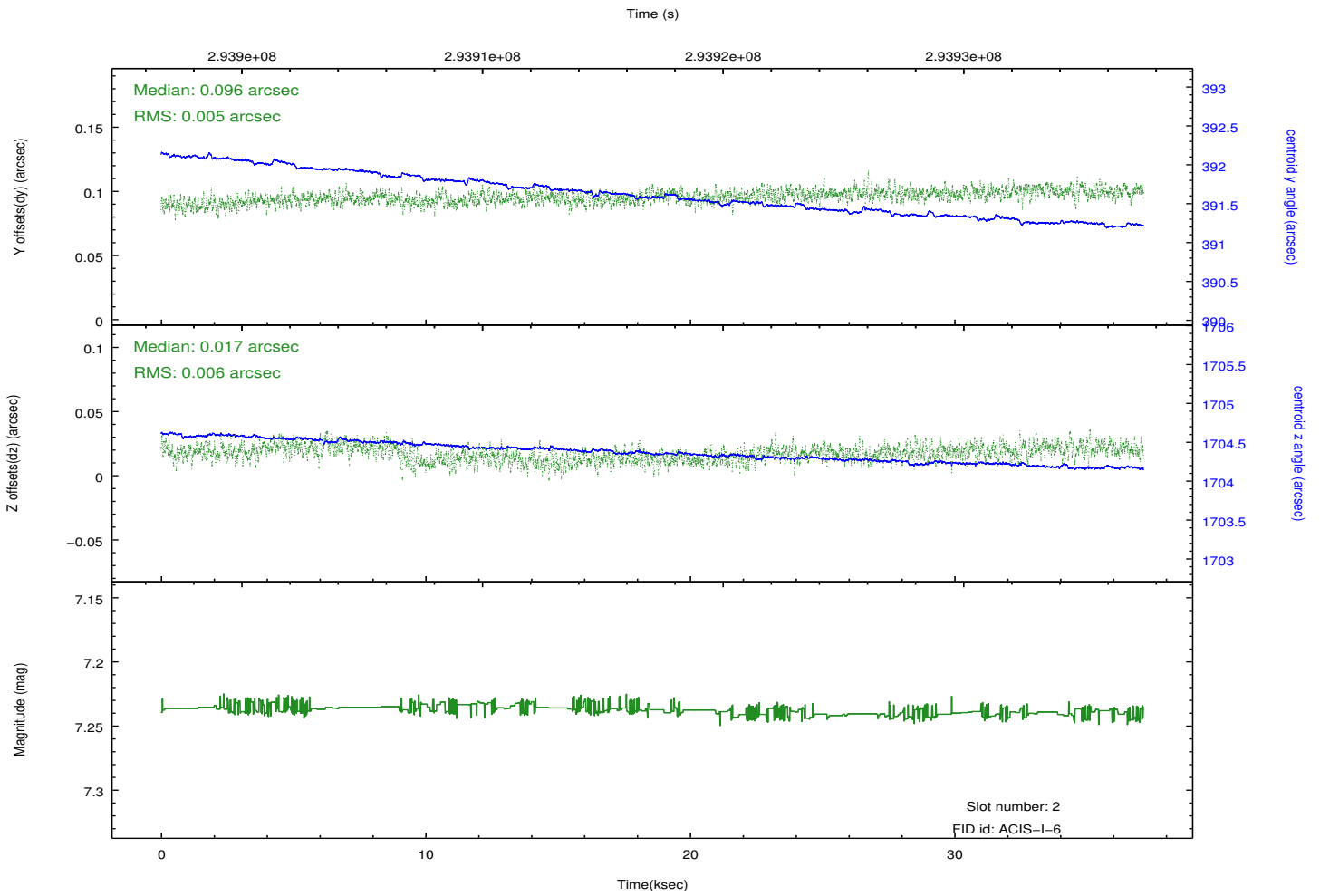
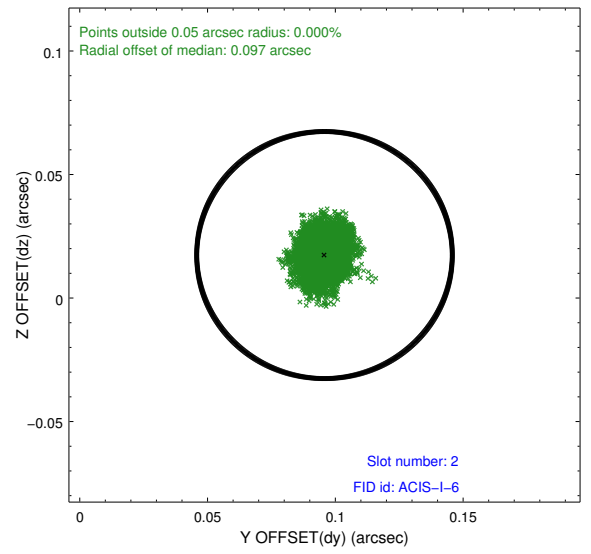
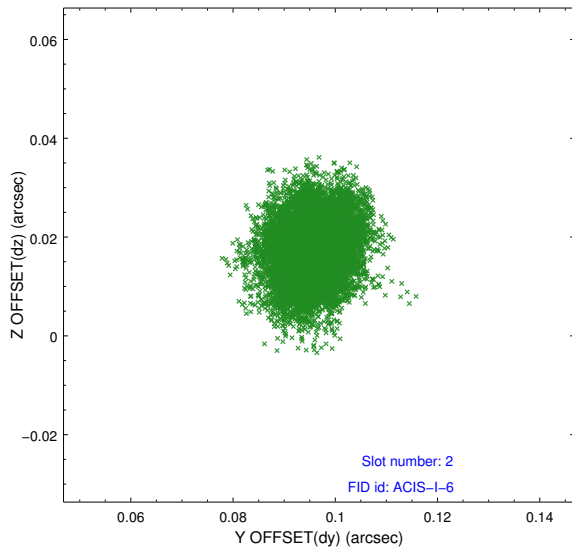
### 2.5.1 Slot 0



## 2.5.2 Slot 1



### 2.5.3 Slot 2



## A Summary

### A.1 Status

V&V Scientist	Beth Sundheim
V&V Date (YYYY-MM-DD)	2012.04.24
V&V Edition	1
V&V Disposition and Status	OK
V&V Charge Time	37.1423998

### A.2 Comments