

V&V Reference Report

L2 ASCDS Version : 8.4.3.1

Observation 7070 - L2 Version 2
Chandra X-Ray Center

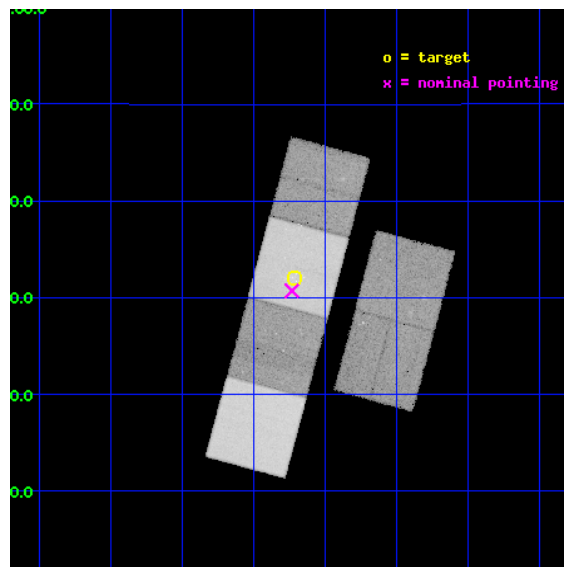
L2 Processing Date : Apr 12 2012

Contents

1	Front	2
2	OBI	3
2.1	OBI	3
2.1.1	Images	3
2.1.2	Bias	3
2.1.3	Parameters	4
2.1.4	Events	4
2.2	Compared Parameters	5
2.3	Aspect	6
2.4	Star Slots	9
2.4.1	Slot 3	9
2.4.2	Slot 4	10
2.4.3	Slot 5	11
2.4.4	Slot 6	12
2.4.5	Slot 7	13
2.5	FID Slots	14
2.5.1	Slot 0	14
2.5.2	Slot 1	15
2.5.3	Slot 2	16
A	Summary	17
A.1	Status	17
A.2	Comments	17

1 Front

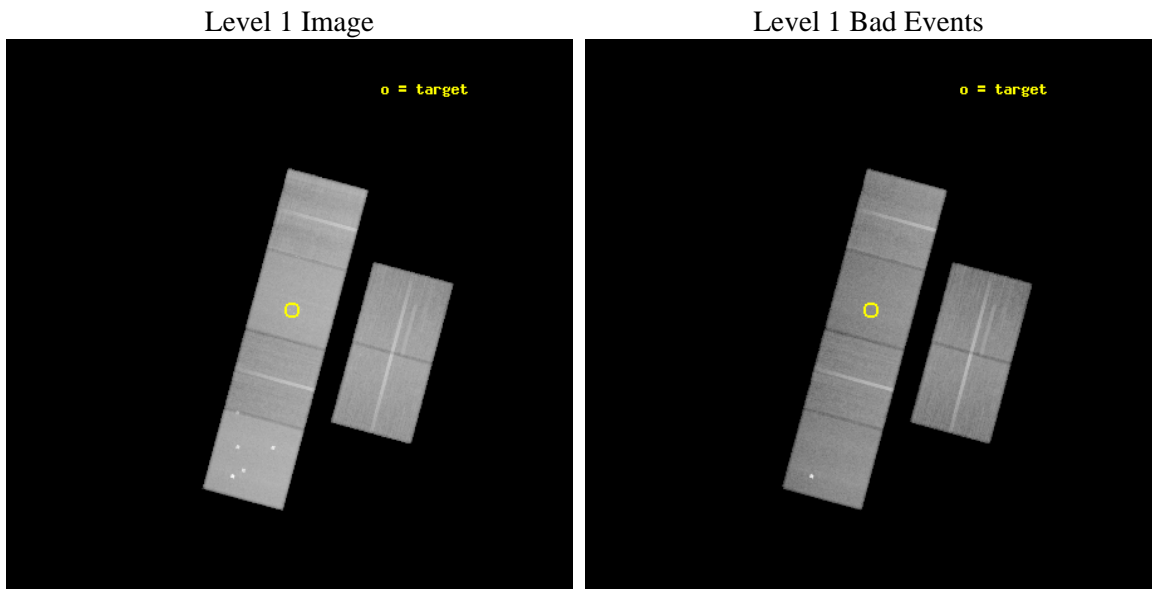
seq_num	600508	Sequence number
obs_id	7070	Observation id
title	X-Ray Sources in Starburst Galaxies	Proposal title
observer	Prof. Philip Kaaret	Principal investigator
object	NGC 7541	Source name
dtcycle	0	
cycle	P	events from which exps? Prim/Second/Both
ra_targ	348.679583	Observer's specified target RA [deg]
dec_targ	4.534444	Observer's specified target Dec [deg]
ra_nom	348.68387488114	Nominal RA [deg]
dec_nom	4.5119007747271	Nominal Dec [deg]
roll_nom	285.08374838314	Nominal Roll [deg]
revision	2	Processing version of data
ontime	39475.199853003	Sum of GTIs [s]
livetime	38975.341103353	Livetime [s]
ontime2	39475.199853003	Sum of GTIs [s]
ontime3	39475.199853003	Sum of GTIs [s]
ontime5	39475.199853003	Sum of GTIs [s]
ontime6	39471.958872676	Sum of GTIs [s]
ontime7	39475.199853003	Sum of GTIs [s]
ontime8	39475.199853003	Sum of GTIs [s]
l2events	584079	Number of level 2 events



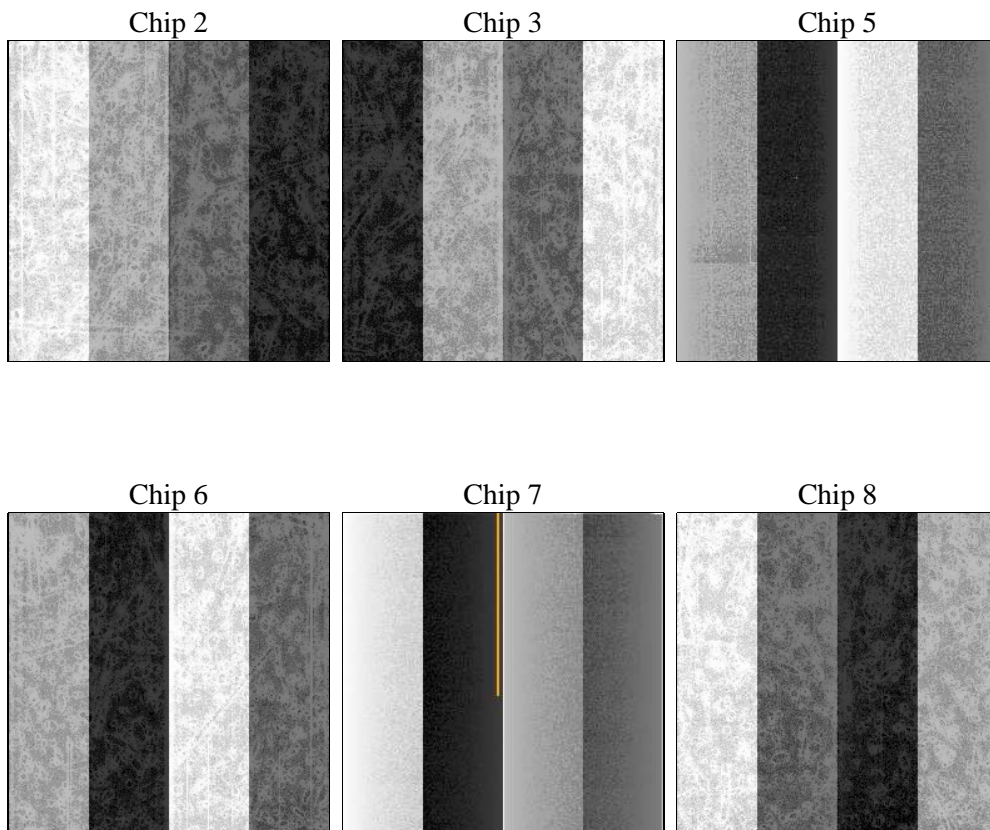
2 OBI

2.1 OBI

2.1.1 Images



2.1.2 Bias



2.1.3 Parameters

obi_num	0	Obi number	sched_exp_time	39300.000000	[s] Scheduled observation exposure time
ascdsver	8.4.3.1	Processing system revision	ontime	39475.199853003	Sum of GTIs [s]
caldbver	4.4.9	 	ontime2	39475.199853003	Sum of GTIs [s]
date	2012-04-12T10:58:37	Date and time of file creation	ontime3	39475.199853003	Sum of GTIs [s]
revision	2	Processing version of data	ontime5	39475.199853003	Sum of GTIs [s]
			ontime6	39471.958872676	Sum of GTIs [s]
			ontime7	39475.199853003	Sum of GTIs [s]
			ontime8	39475.199853003	Sum of GTIs [s]
			l1events	2608895	Number of level 1 events

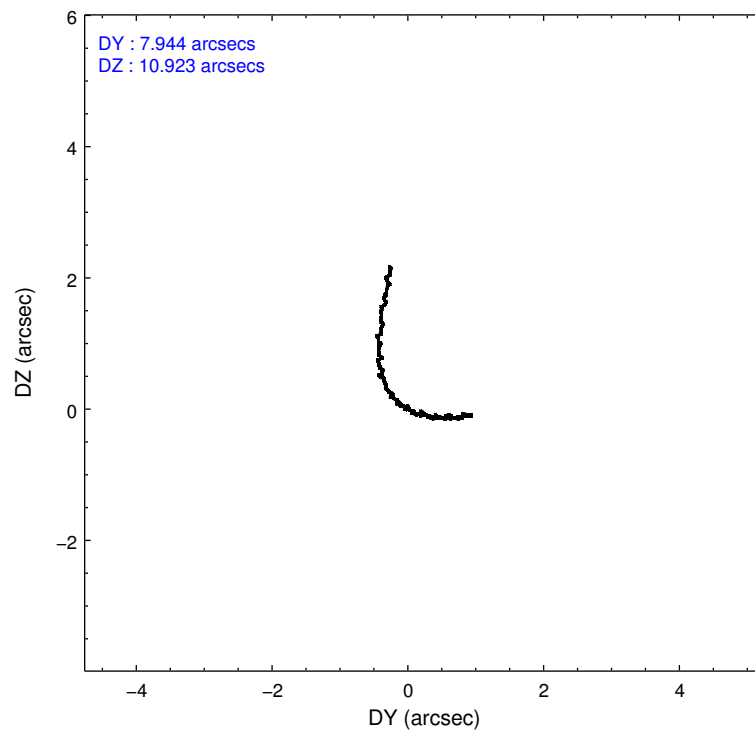
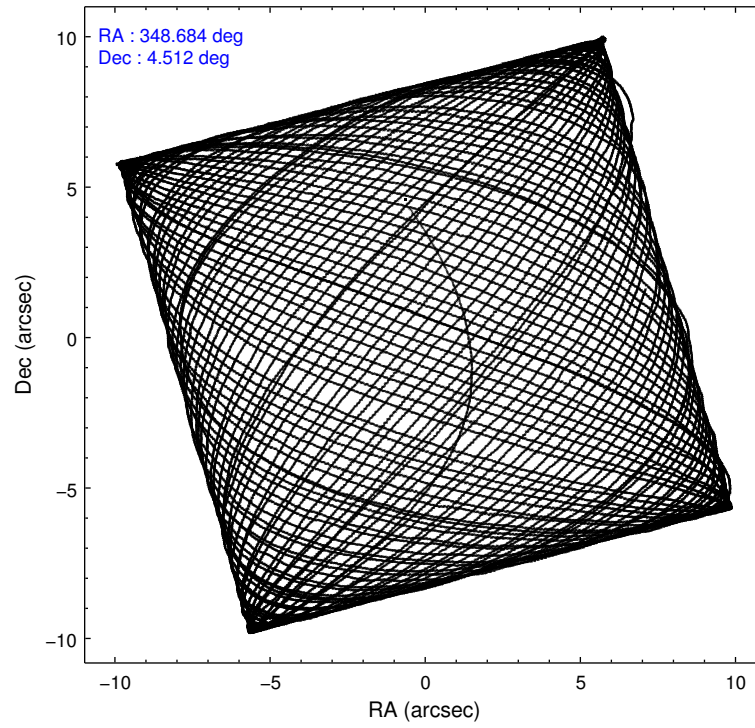
2.1.4 Events

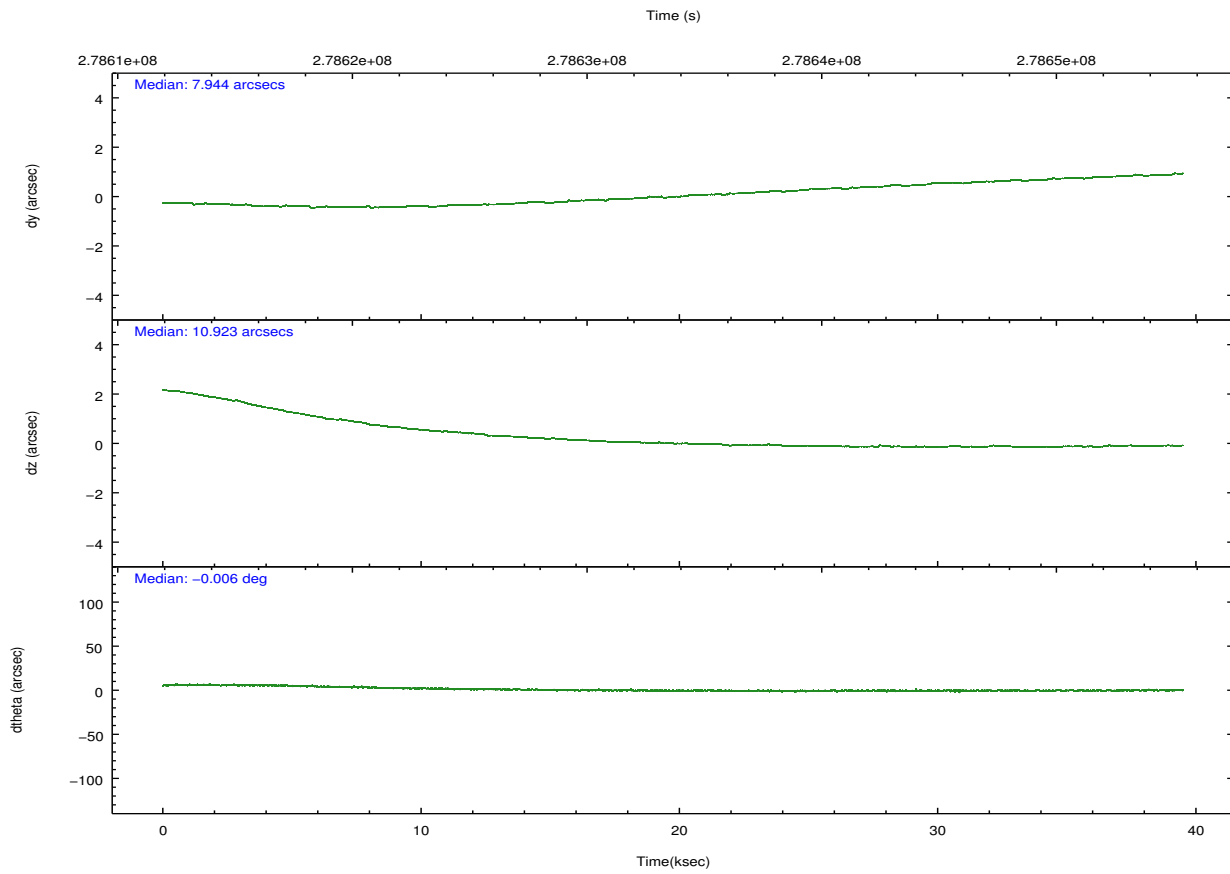
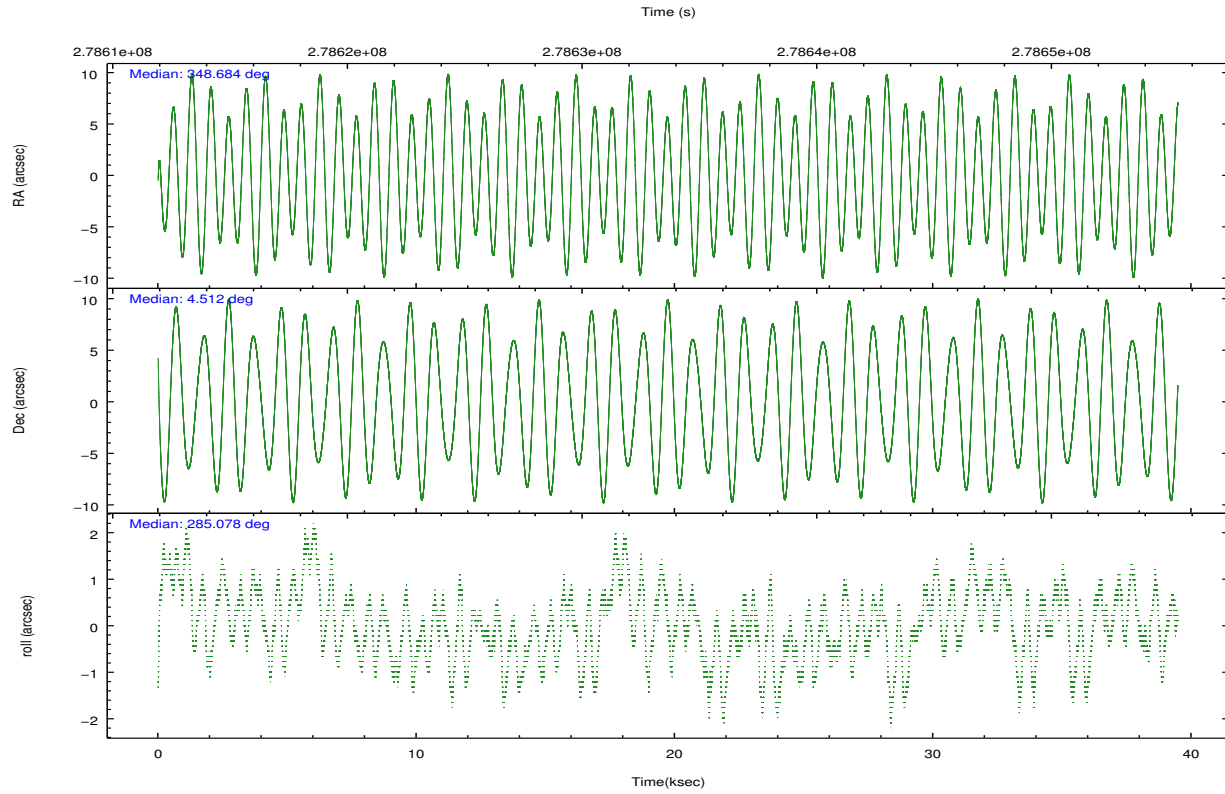
	ccd 2	ccd 3	ccd 5	ccd 6	ccd 7	ccd 8		ccd 2	ccd 3	ccd 5	ccd 6	ccd 7	ccd 8
level 1 events	374361	346222	570174	365292	493948	458898	grade 0 events	17752	17862	32806	16527	17831	31595
rejected events	332940	305162	307901	322825	290085	357450		4%	5%	5%	4%	3%	6%
rejected %	88%	88%	54%	88%	58%	77%	grade 1 events	245	232	749	202	494	367
								0%	0%	0%	0%	0%	0%
							grade 2 events	8914	7954	78275	9217	40905	23007
								2%	2%	13%	2%	8%	5%
							grade 3 events	3840	4085	9307	4029	17579	10722
								1%	1%	1%	1%	3%	2%
							grade 4 events	3950	3990	8956	4058	17321	9832
								1%	1%	1%	1%	3%	2%
							grade 5 events	14018	16262	40315	16775	46860	22335
								3%	4%	7%	4%	9%	4%
							grade 6 events	7164	7338	133987	8796	111040	26624
								1%	2%	23%	2%	22%	5%
							grade 7 events	318478	288499	265779	305688	241918	334416
								85%	83%	46%	83%	48%	72%

2.2 Compared Parameters

Parameter	Planned	Actual	Parameter	Planned	Actual
Instrument	ACIS	ACIS	Obspar format version number	7	7
Detector	ACIS-235678	ACIS-235678	Obspar file type	PREDICTED	ACTUAL
Grating	NONE	NONE	Obspar update status	NONE	UPDATED
Data mode	FAINT	FAINT	Number of optional ACIS chips dropped	0	0
Observation mode	POINTING	POINTING	On-chip summing requested	N	N
[deg] Pointing RA	348.664268	348.6838748811414	Subarray requested	NONE	NONE
[deg] Pointing Dec	4.530898	4.511900774727146	Alternating exposures requested	N	N
[deg] Pointing Roll	284.928665	285.0837483831426	[s] Primary exposure time	0.000000	3.2
[mm] SIM focus pos	-0.684267	-0.6828225247311905			
[mm] SIM defocus	0	0.001444936568705701			
[mm] SIM translation stage pos	-190.132523	-190.1425803651734			
[mm] SIM translation stage offset	0	0.01005778216563158			
[s] Observation start time (MET)	278614116.184000	278612967.16309			
Observation start date	2006-10-30T16:47:31	2006-10-30T16:29:27			
[s] Observation end time (MET)	278653416.184000	278654332.06505			
Observation end date	2006-10-31T03:42:31	2006-10-31T03:58:52			
Read mode	TIMED	TIMED			

2.3 Aspect



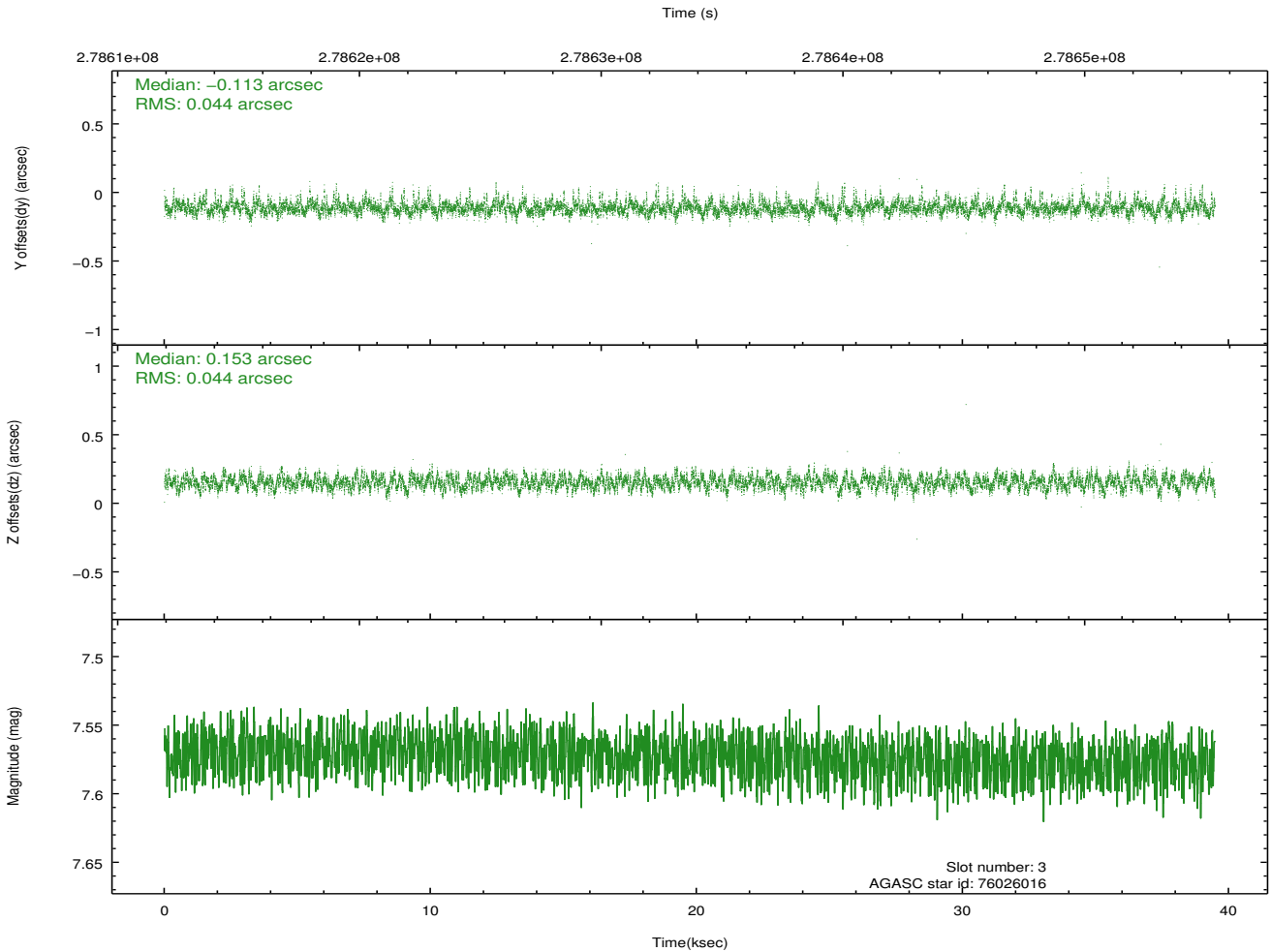
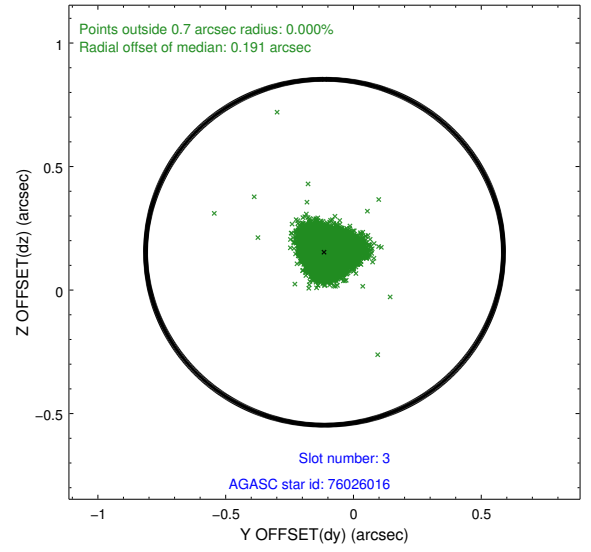
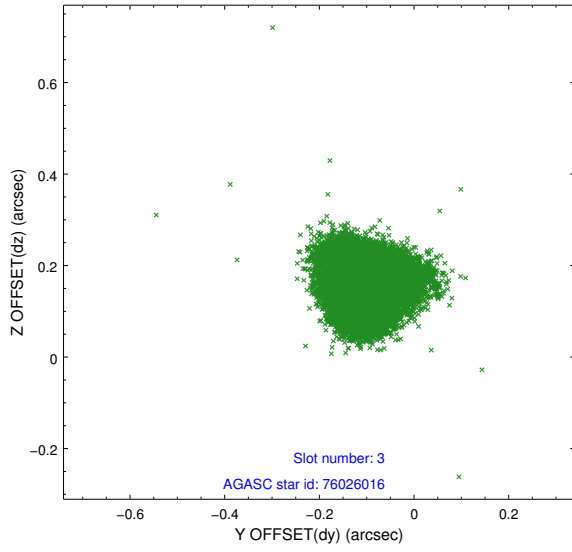


Slot Statistics

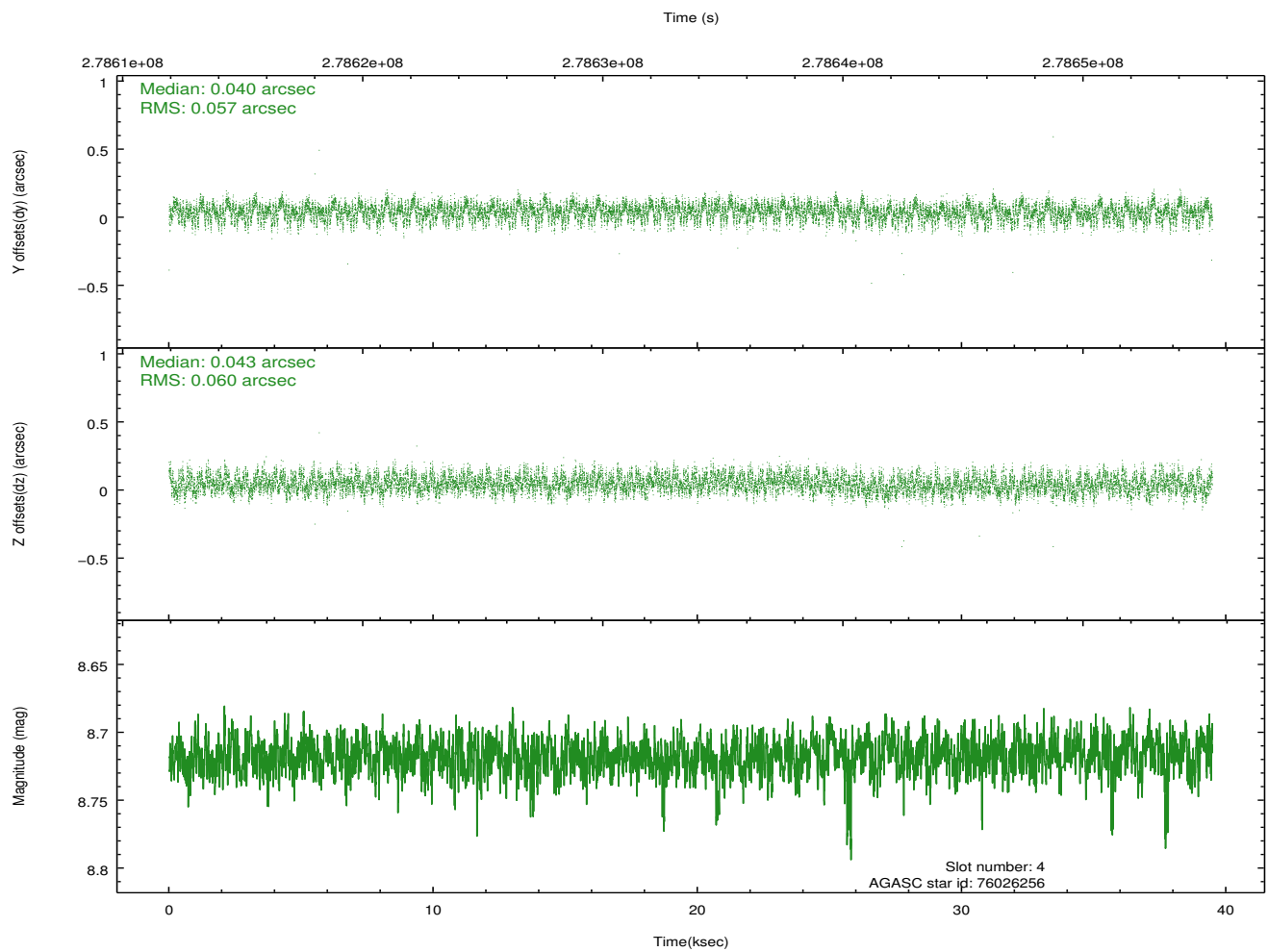
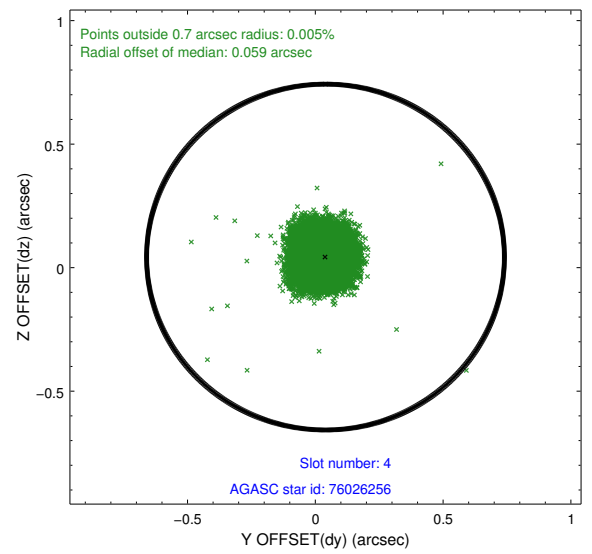
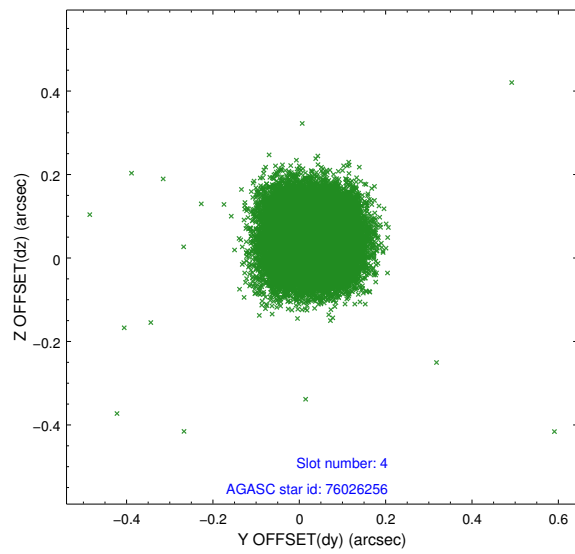
slot	status	id	mag	n_pts	med_dy	med_dz	dr1	dr2	ra	dec	mean_y	mean_z
0	FID	ACIS-S-1	7.19	9628	0.023	-0.081	0.017	0.040	0.000000	0.000000	935.24	-1728.20
1	FID	ACIS-S-4	7.21	9630	0.097	0.049	0.029	0.050	0.000000	0.000000	2152.72	176.07
2	FID	ACIS-S-5	7.24	9631	-0.146	0.045	0.020	0.029	0.000000	0.000000	-1813.79	169.67
3	GUIDE	76026016	7.57	19257	-0.113	0.153	0.066	0.109	348.502152	4.997102	-1771.34	-129.09
4	GUIDE	76026256	8.72	19254	0.040	0.043	0.089	0.138	349.252062	4.461253	785.04	1974.60
5	GUIDE	76027720	8.65	19249	0.019	-0.083	0.073	0.120	348.256110	4.774612	-1224.97	-1188.48
6	GUIDE	76028032	9.26	19239	0.080	-0.063	0.098	0.160	348.169857	4.682511	-984.62	-1573.34
7	GUIDE	76023816	9.21	19179	-0.024	-0.044	0.123	0.197	347.953107	4.720762	-1318.49	-2288.52

2.4 Star Slots

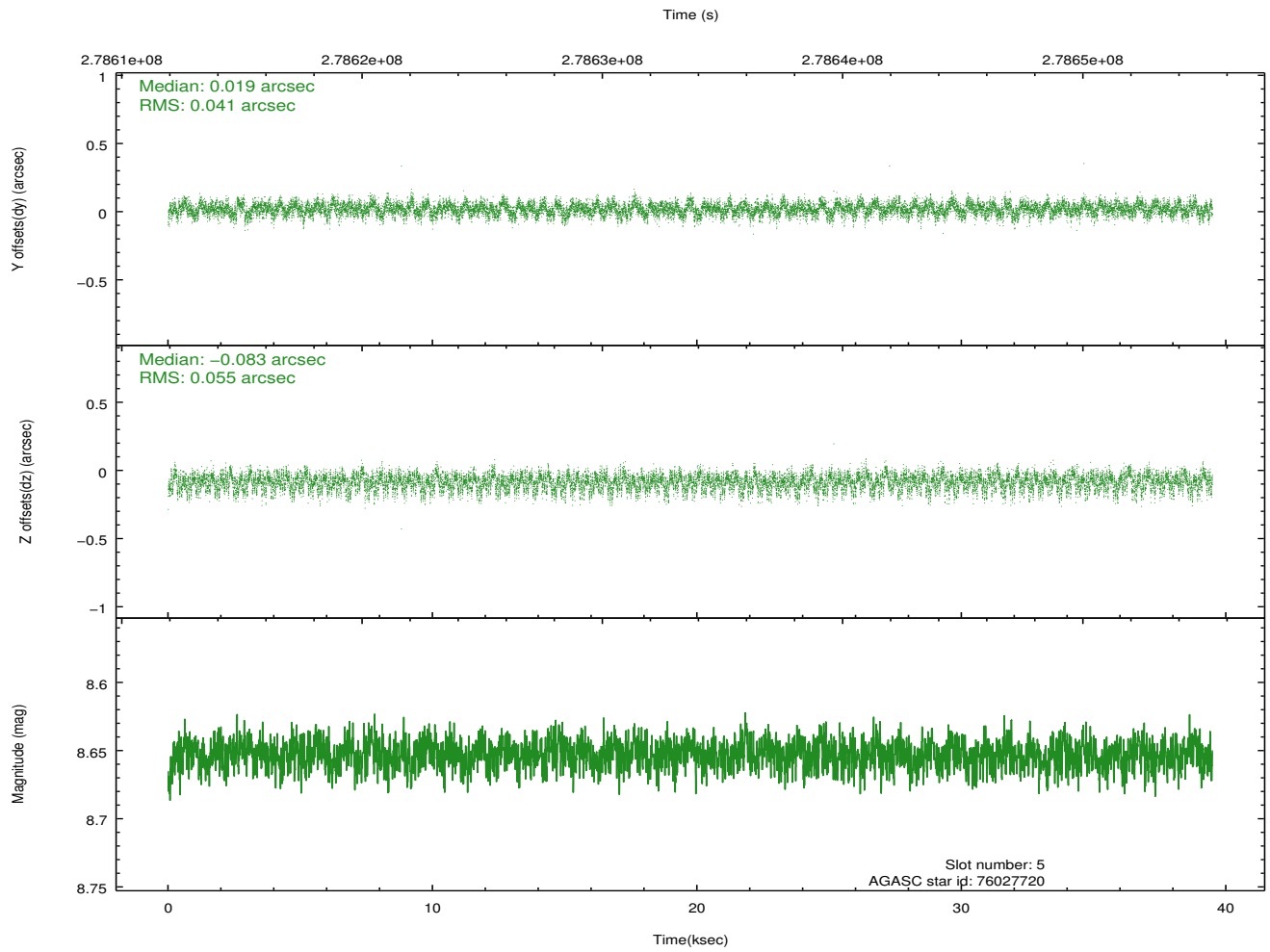
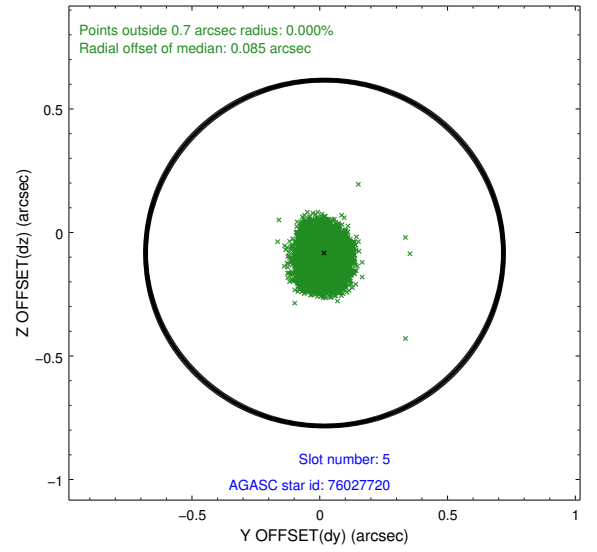
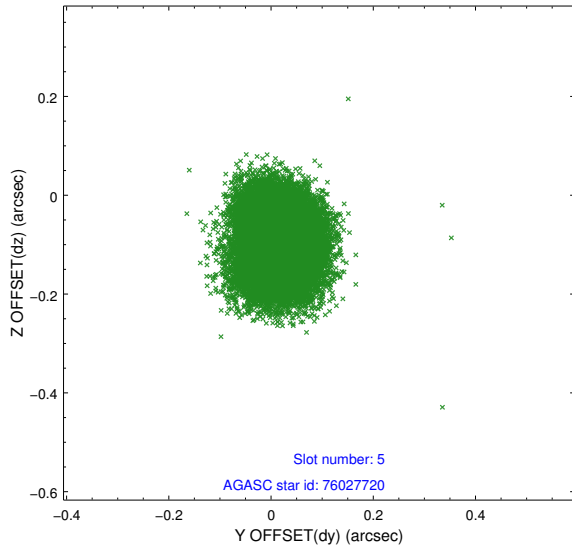
2.4.1 Slot 3



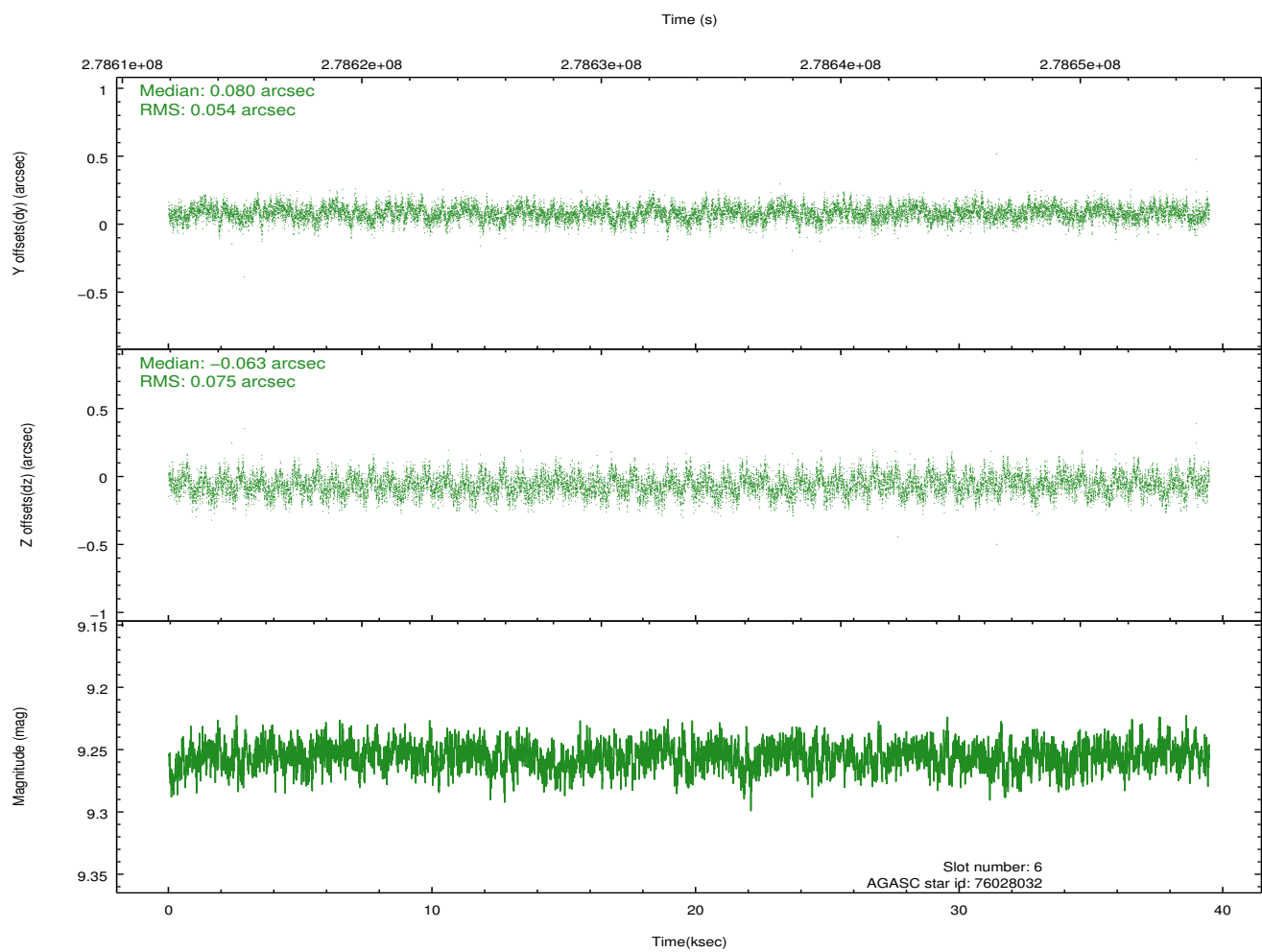
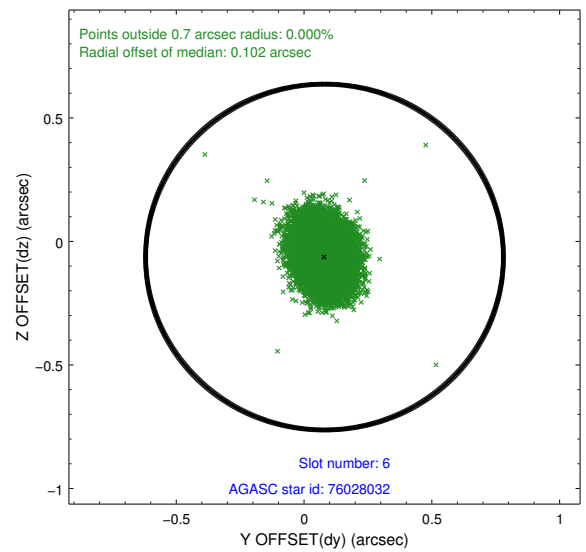
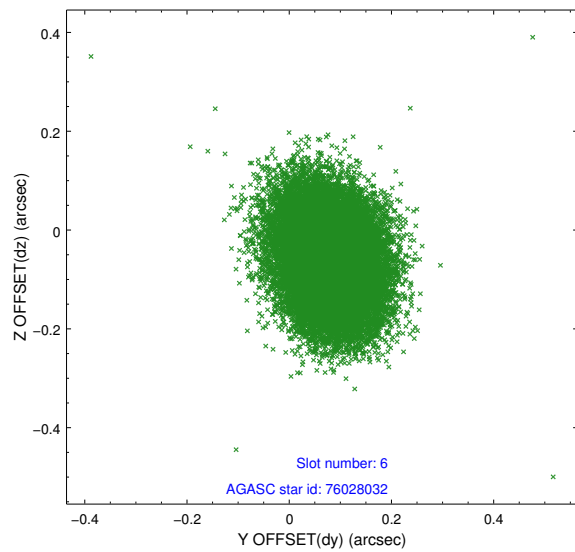
2.4.2 Slot 4



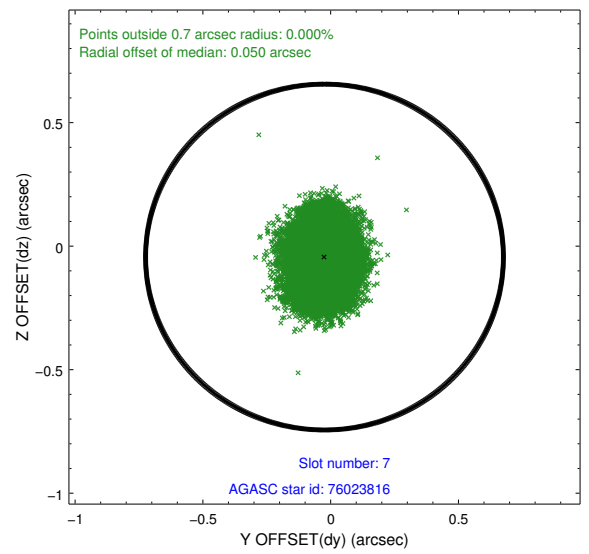
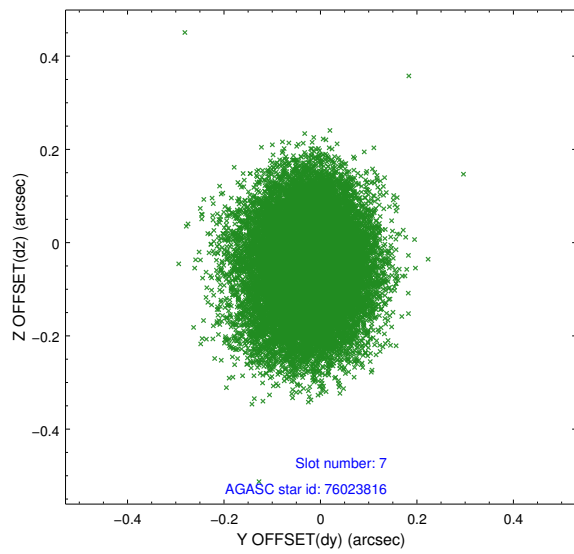
2.4.3 Slot 5



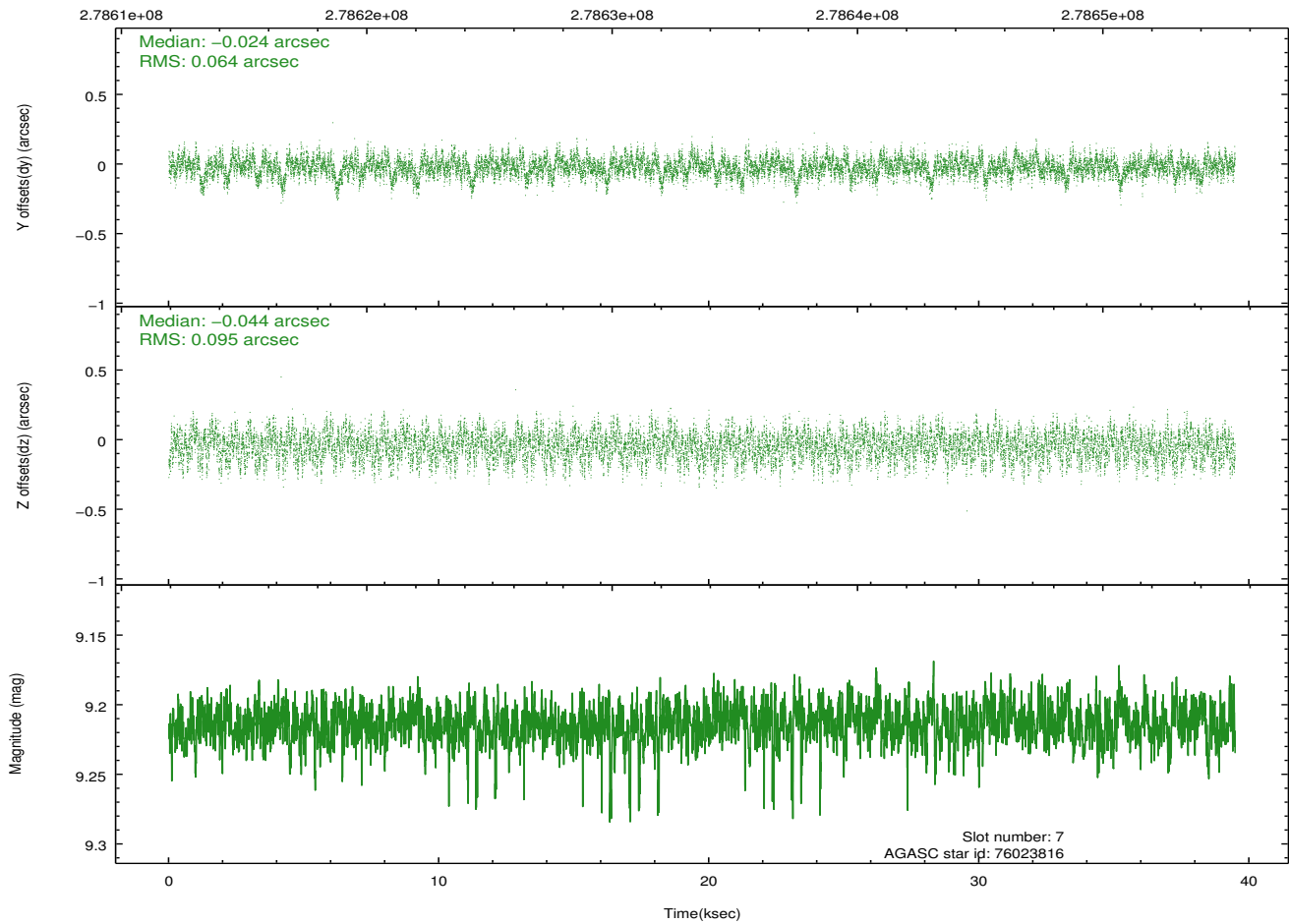
2.4.4 Slot 6



2.4.5 Slot 7

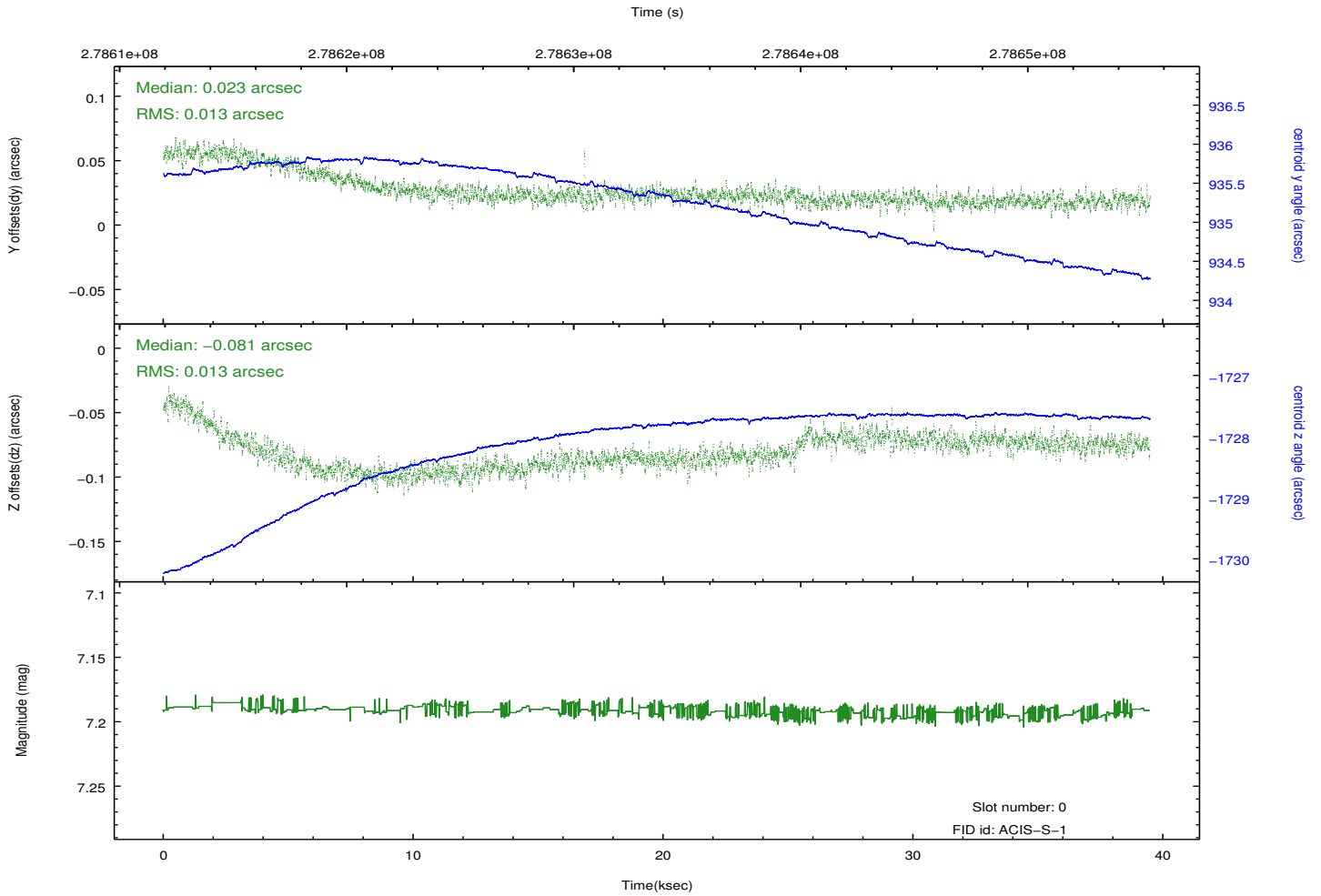
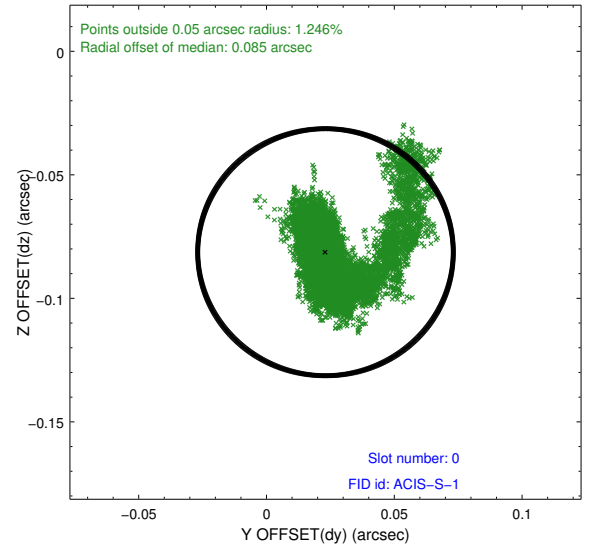
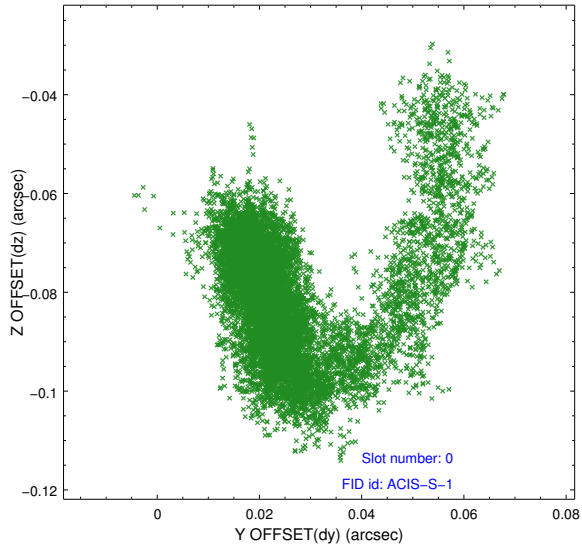


Time (s)

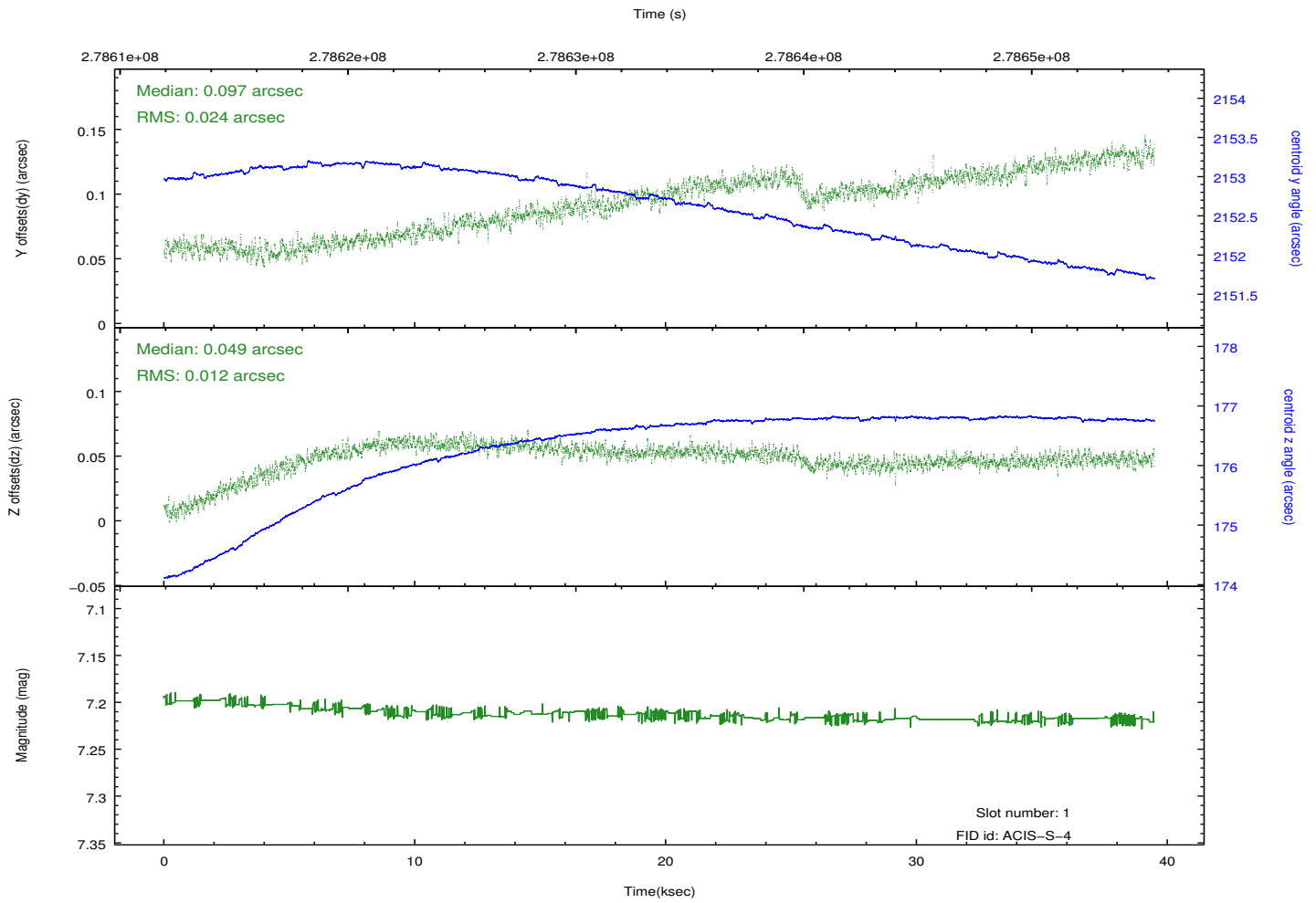
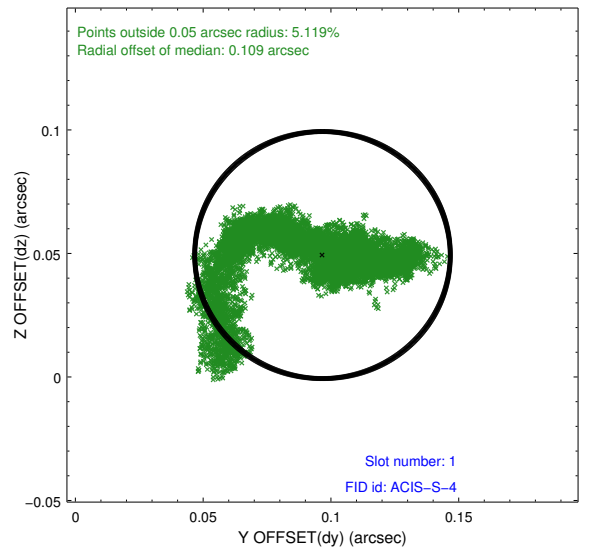
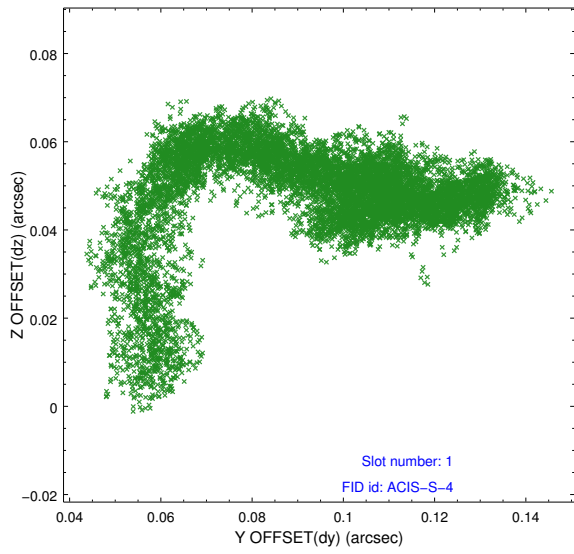


2.5 FID Slots

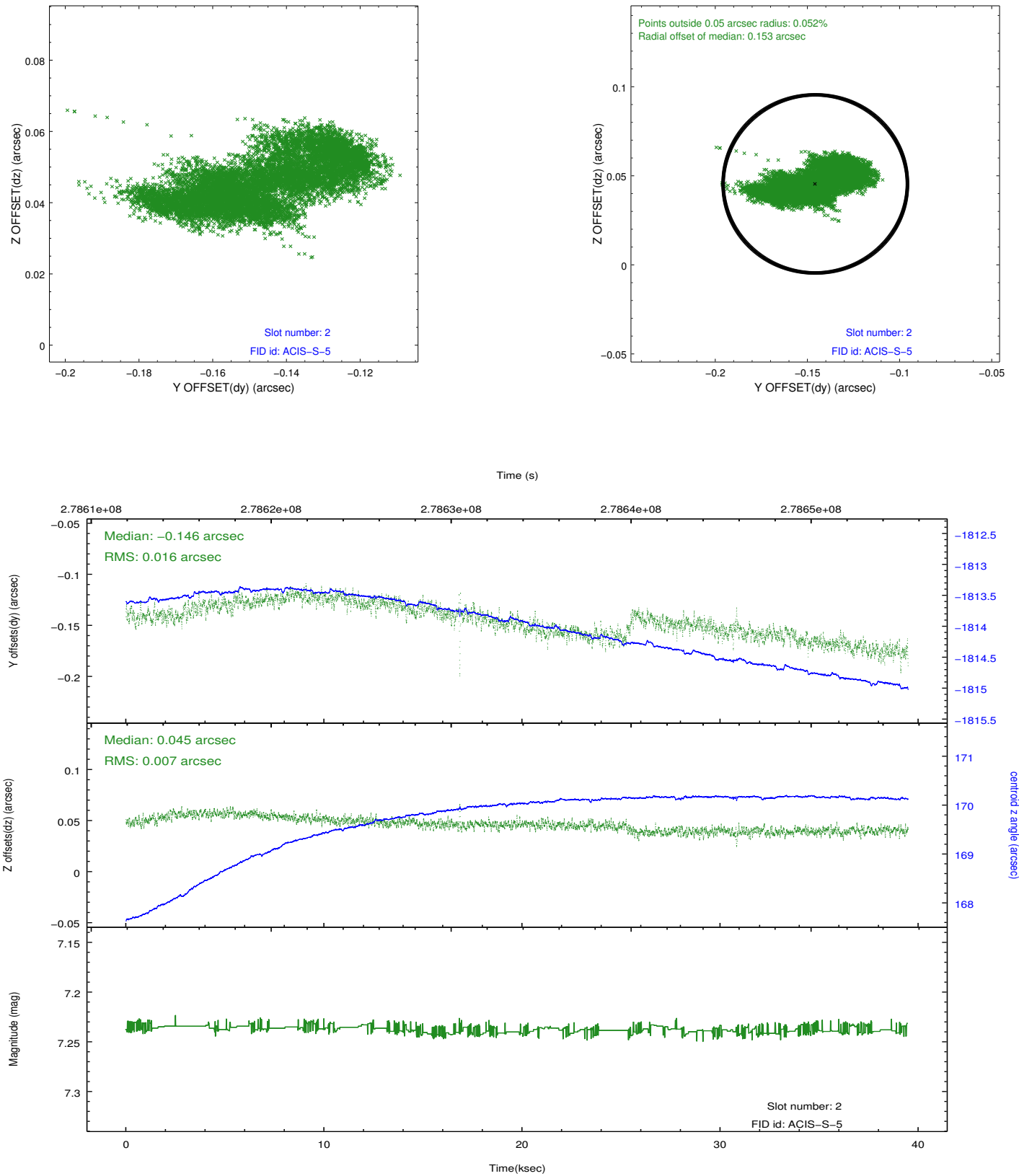
2.5.1 Slot 0



2.5.2 Slot 1



2.5.3 Slot 2



A Summary

A.1 Status

V&V Scientist	Jen Lauer
V&V Date (YYYY-MM-DD)	2012.04.12
V&V Edition	1
V&V Disposition and Status	OK
V&V Charge Time	39.4751998

A.2 Comments