

# V&V Reference Report

## L2 ASCDS Version : 8.4.5

Observation 730 - L2 Version 5  
Chandra X-Ray Center

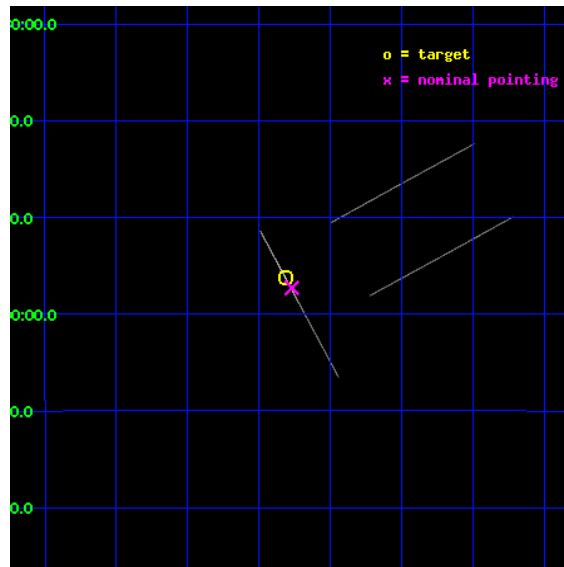
L2 Processing Date : Aug 30 2012

## Contents

<b>1</b>	<b>Front</b>	<b>2</b>
<b>2</b>	<b>OBI</b>	<b>3</b>
2.1	OBI . . . . .	3
2.1.1	Images . . . . .	3
2.1.2	Bias . . . . .	3
2.1.3	Parameters . . . . .	4
2.1.4	Events . . . . .	4
2.2	Compared Parameters . . . . .	5
2.3	Aspect . . . . .	6
2.4	Star Slots . . . . .	9
2.4.1	Slot 3 . . . . .	9
2.4.2	Slot 4 . . . . .	10
2.4.3	Slot 5 . . . . .	11
2.4.4	Slot 6 . . . . .	12
2.4.5	Slot 7 . . . . .	13
2.5	FID Slots . . . . .	14
2.5.1	Slot 0 . . . . .	14
2.5.2	Slot 1 . . . . .	15
2.5.3	Slot 2 . . . . .	16
<b>A</b>	<b>Summary</b>	<b>17</b>
A.1	Status . . . . .	17
A.2	Comments . . . . .	17

# 1 Front

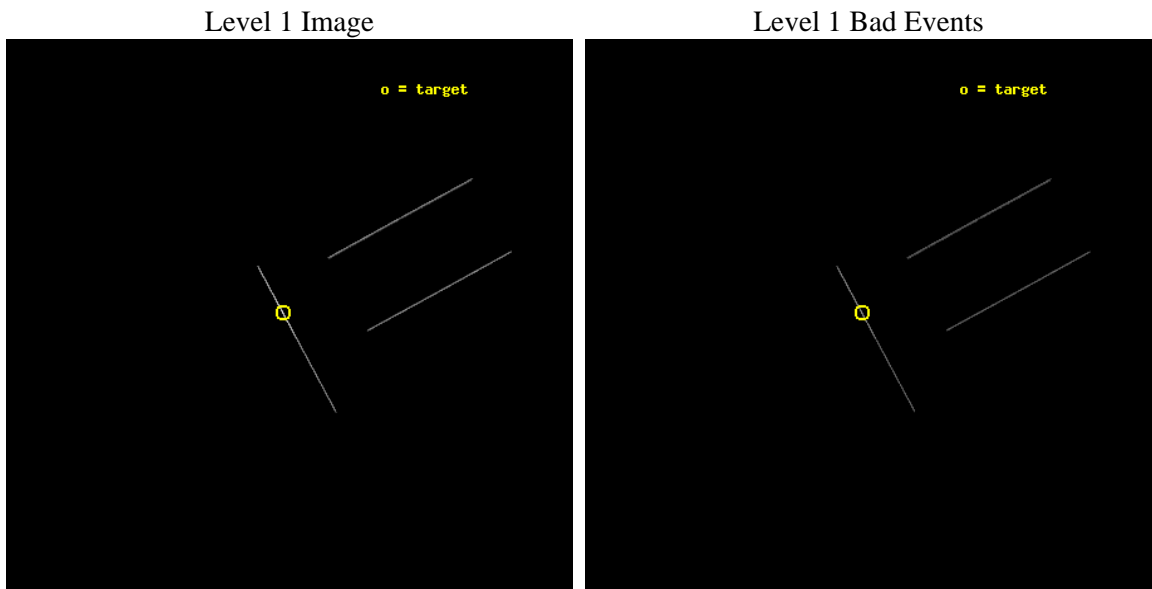
seq_num	500026	Sequence number
obs_id	730	Observation id
title	THE TORTOISE AND THE HARE: AN AXAF STUDY OF TWO COMPOSITE SUPERNOVA REMNANTS	Proposal title
observer	Dr. Patrick Slane	Principal investigator
object	KES 73	Source name
ra_targ	280.329167	Observer's specified target RA [deg]
dec_targ	-4.937222	Observer's specified target Dec [deg]
ra_nom	280.3175269315	Nominal RA [deg]
dec_nom	-4.9547864614827	Nominal Dec [deg]
roll_nom	241.50995277608	Nominal Roll [deg]
revision	5	Processing version of data
ontime	10493.0	Sum of GTIs [s]
livetime	10452.01171875	Livetime [s]
ontime0	10493.0	Sum of GTIs [s]
ontime1	10493.0	Sum of GTIs [s]
ontime2	10493.0	Sum of GTIs [s]
ontime3	10493.0	Sum of GTIs [s]
ontime6	10493.0	Sum of GTIs [s]
ontime7	10493.0	Sum of GTIs [s]
l2events	143770	Number of level 2 events



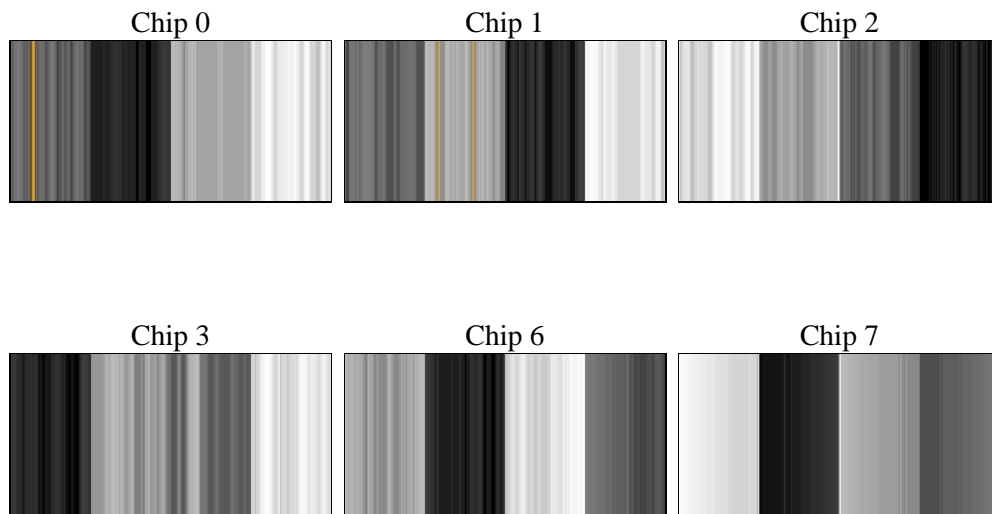
## 2 OBI

### 2.1 OBI

#### 2.1.1 Images



#### 2.1.2 Bias



### 2.1.3 Parameters

obi_num	0	Obi number	sched_exp_time	10000.000000	[s] Scheduled observation exposure time
ascdsver	8.4.5	Processing system revision	ontime	10493.0	Sum of GTIs [s]
caldbver	4.5.1.1	&#160	ontime0	10493.0	Sum of GTIs [s]
date	2012-08-30T21:25:26	Date and time of file creation	ontime1	10493.0	Sum of GTIs [s]
revision	5	Processing version of data	ontime2	10493.0	Sum of GTIs [s]
			ontime3	10493.0	Sum of GTIs [s]
			ontime6	10493.0	Sum of GTIs [s]
			ontime7	10493.0	Sum of GTIs [s]
			l1events	174971	Number of level 1 events

### 2.1.4 Events

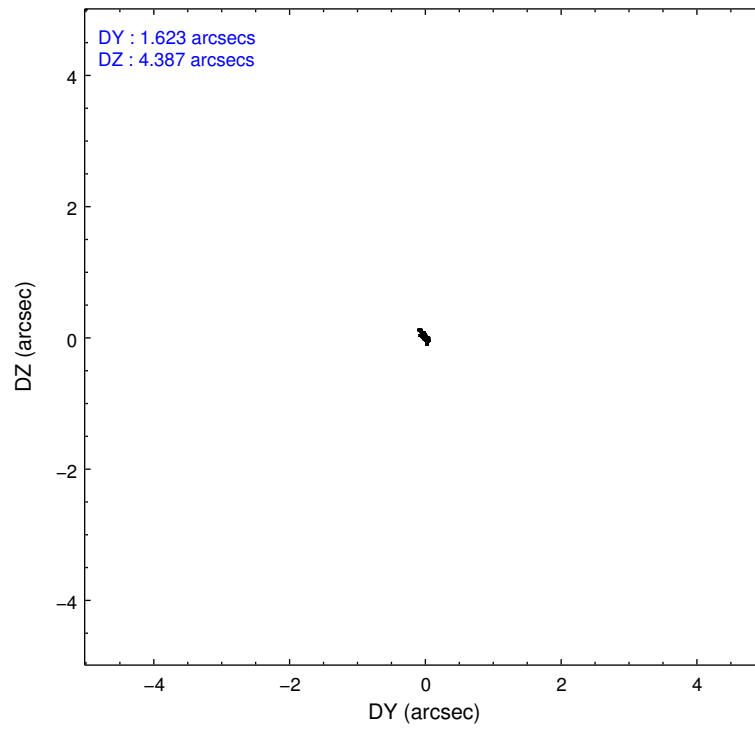
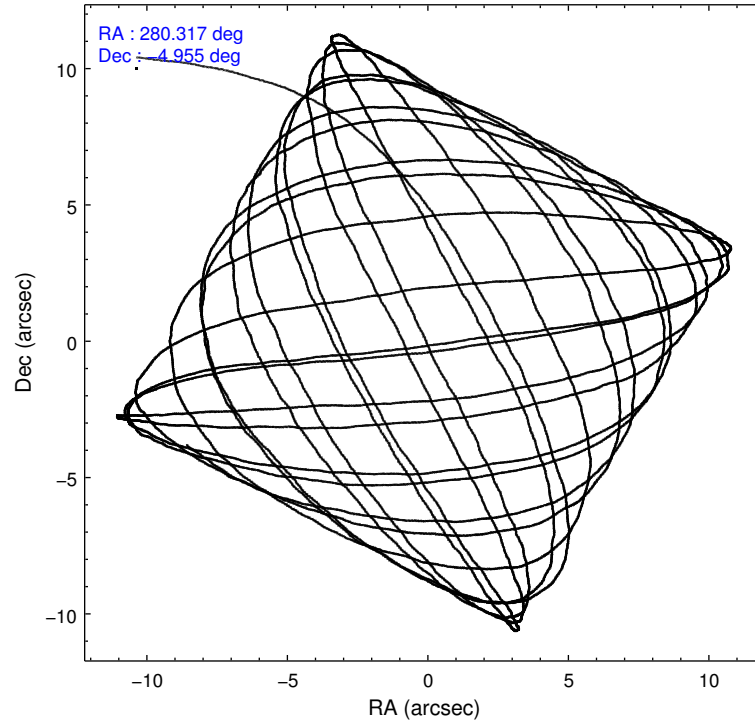
	ccd 0	ccd 1	ccd 2	ccd 3	ccd 6	ccd 7
level 1 events	13669	12793	12864	14405	15175	106065
rejected events	2634	2673	2522	2699	3007	9405
rejected %	19%	20%	19%	18%	19%	8%

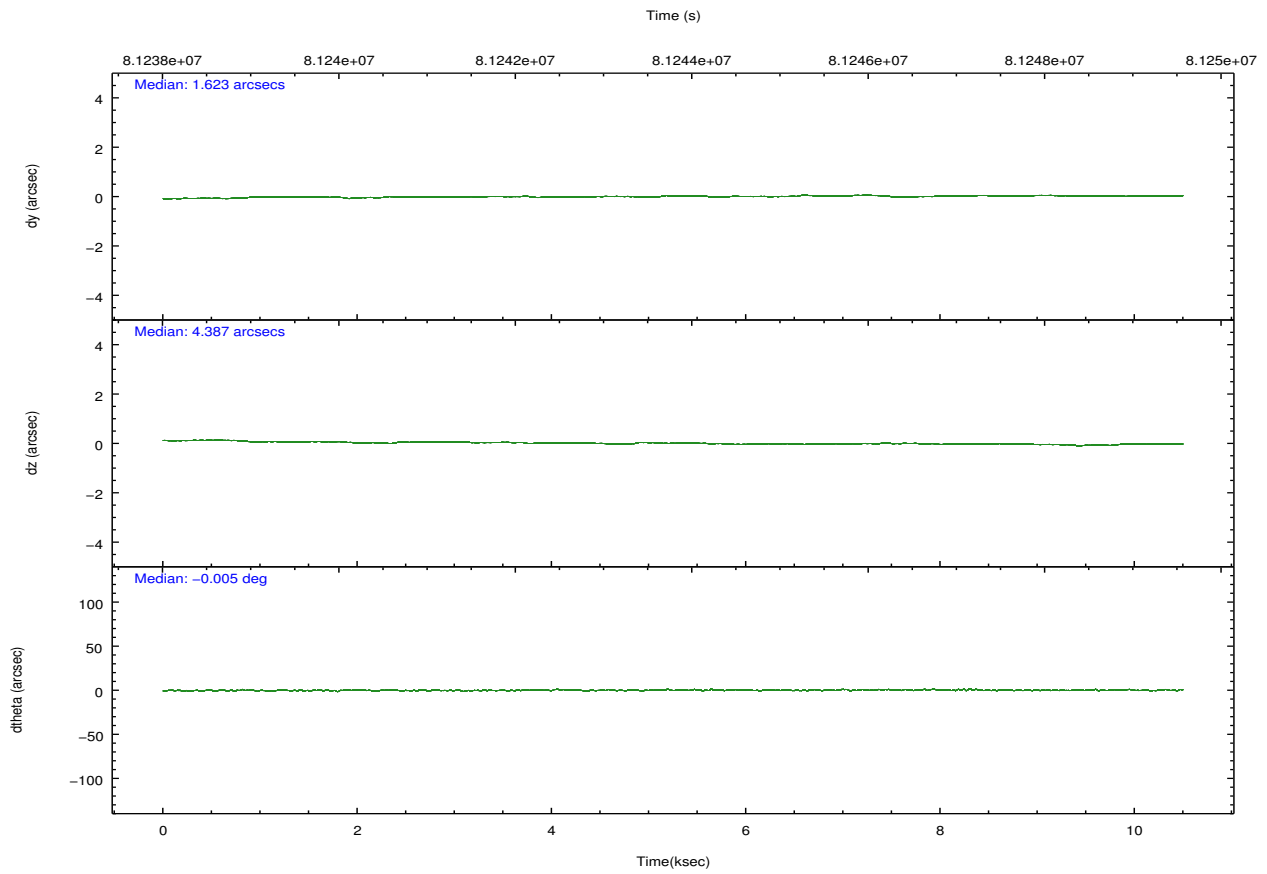
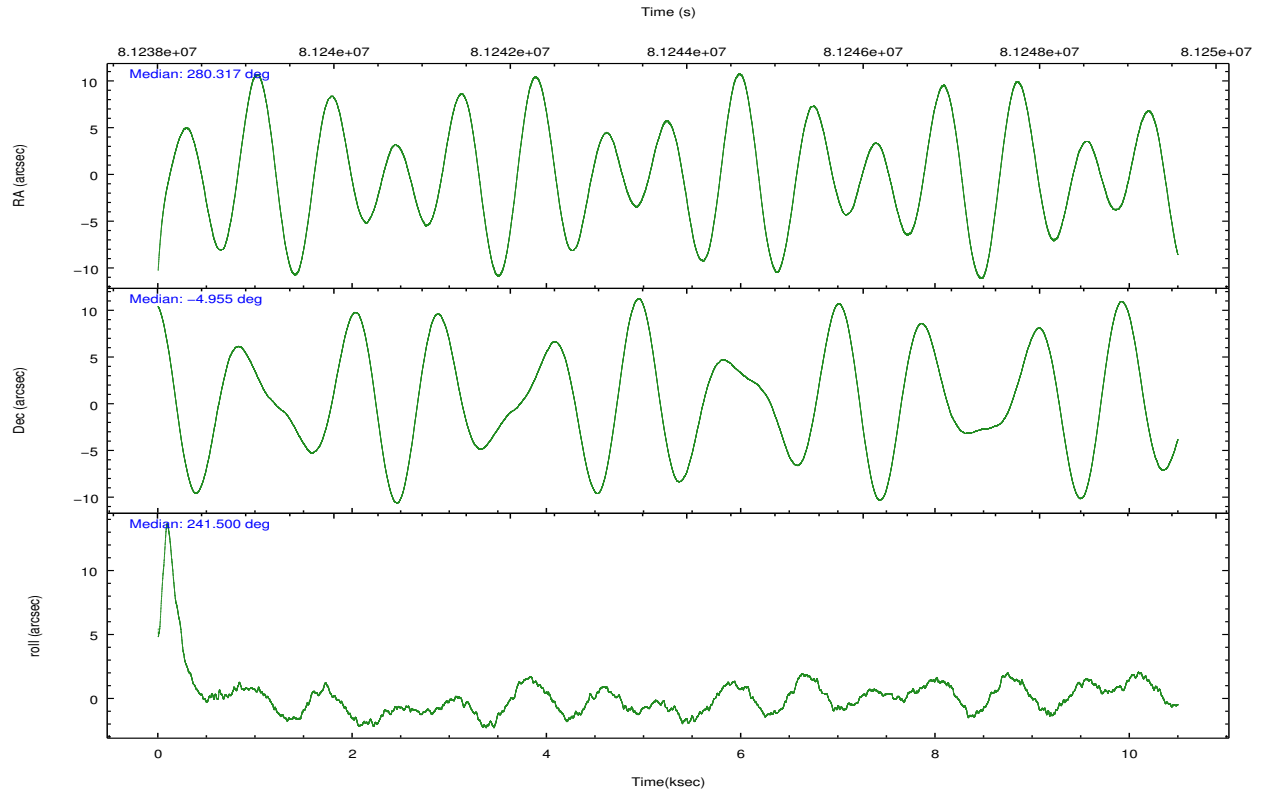
	ccd 0	ccd 1	ccd 2	ccd 3	ccd 6	ccd 7
grade 0 events	1879	1338	1478	1677	1726	19681
	13%	10%	11%	11%	11%	18%
grade 1 events	41	37	45	40	39	141
	0%	0%	0%	0%	0%	0%
grade 2 events	4376	4241	4297	4628	5283	25932
	32%	33%	33%	32%	34%	24%
grade 3 events	1689	1442	1493	2041	1708	10525
	12%	11%	11%	14%	11%	9%
grade 4 events	1481	1412	1552	1763	1656	10463
	10%	11%	12%	12%	10%	9%
grade 5 events	2016	2059	1928	2056	2354	6865
	14%	16%	14%	14%	15%	6%
grade 6 events	2185	2257	2071	2200	2409	32458
	15%	17%	16%	15%	15%	30%
grade 7 events	2	7	0	0	0	0
	0%	0%	0%	0%	0%	0%

## 2.2 Compared Parameters

Parameter	Planned	Actual	Parameter	Planned	Actual
Instrument	ACIS	ACIS	Obspar format version number	7	7
Detector	ACIS-012367	ACIS-012367	Obspar file type	PREDICTED	ACTUAL
Grating	NONE	NONE	Obspar update status	NONE	UPDATED
Data mode	CC33_FAINT	CC33_FAINT	Number of optional ACIS chips dropped	0	0
Observation mode	POINTING	POINTING	On-chip summing requested	N	N
[deg] Pointing RA	280.316647	280.3175269315029	Subarray requested	NONE	NONE
[deg] Pointing Dec	-4.927376	-4.954786461482684	Alternating exposures requested	N	N
[deg] Pointing Roll	241.353251	241.5099527760763	[s] Primary exposure time	0.000000	0
[mm] SIM focus pos	-0.684267	-0.6828225247311905			
[mm] SIM defocus	0	0.001444936568705701			
[mm] SIM translation stage pos	-190.132523	-190.1425803651734			
[mm] SIM translation stage offset	0	0.01005778216563158			
[s] Observation start time (MET)	81239037.184000	81237925.005082			
Observation start date	2000-07-29T06:22:53	2000-07-29T06:05:25			
[s] Observation end time (MET)	81249037.184000	81249648.95551801			
Observation end date	2000-07-29T09:09:33	2000-07-29T09:20:48			
Read mode	CONTINUOUS	CONTINUOUS			

## 2.3 Aspect





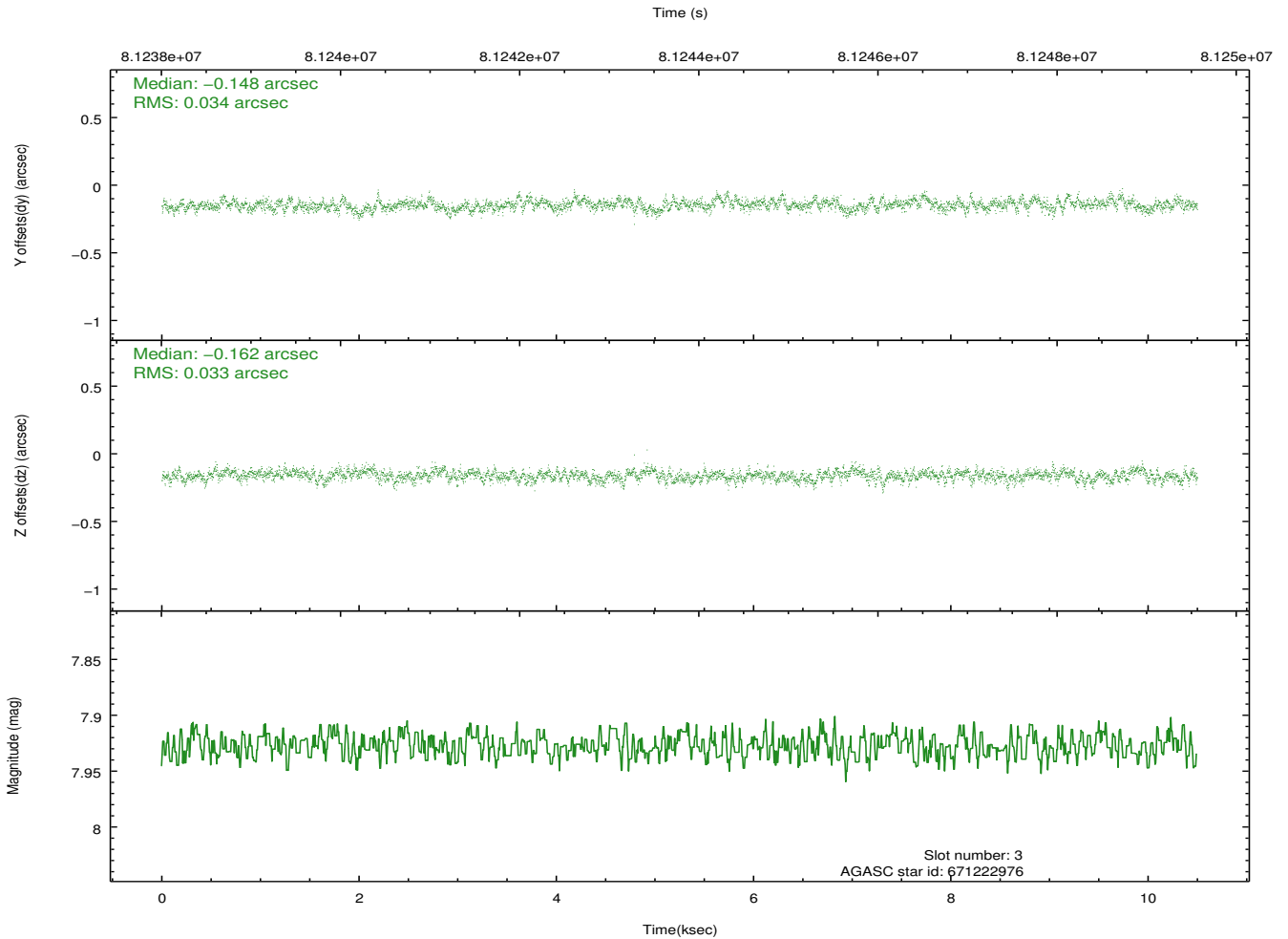
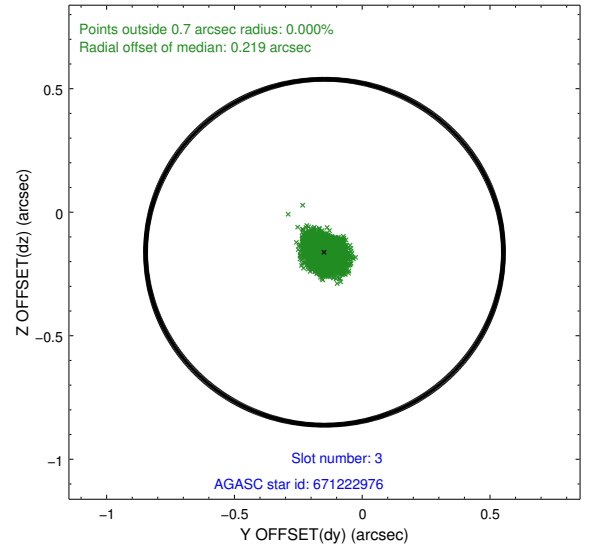
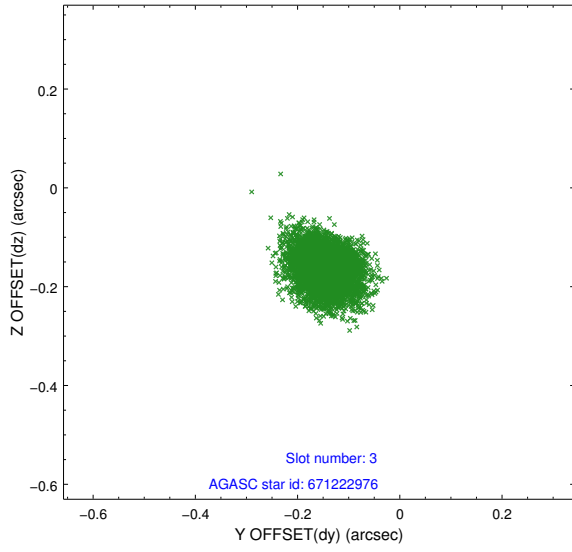
### Slot Statistics

slot	status	id	mag	n_pts	med_dy	med_dz	dr1	dr2	ra	dec	mean_y	mean_z
0	FID	ACIS-S-1	7.19	2561	-0.003	0.028	0.007	0.013	0.000000	0.000000	941.80	-1721.04
1	FID	ACIS-S-5	7.24	2561	-0.002	0.015	0.007	0.011	0.000000	0.000000	-1806.90	176.00
2	FID	ACIS-S-6	7.36	2560	-0.016	-0.032	0.007	0.012	0.000000	0.000000	406.82	820.47
3	GUIDE	671222976	7.93	5122	-0.148	-0.162	0.050	0.084	281.033634	-5.005625	-984.63	2392.54
4	GUIDE	671227032	9.06	5121	-0.035	0.014	0.078	0.124	279.928425	-4.802281	273.06	-1436.82
5	GUIDE	671223840	9.11	5122	-0.072	0.063	0.093	0.147	279.920616	-4.408218	-957.81	-2143.12
6	GUIDE	671226984	9.36	5120	0.194	-0.035	0.086	0.157	280.194593	-5.352386	1552.71	349.99
7	GUIDE	671223936	9.50	5118	0.062	0.114	0.089	0.145	280.598328	-4.808883	-858.14	683.02

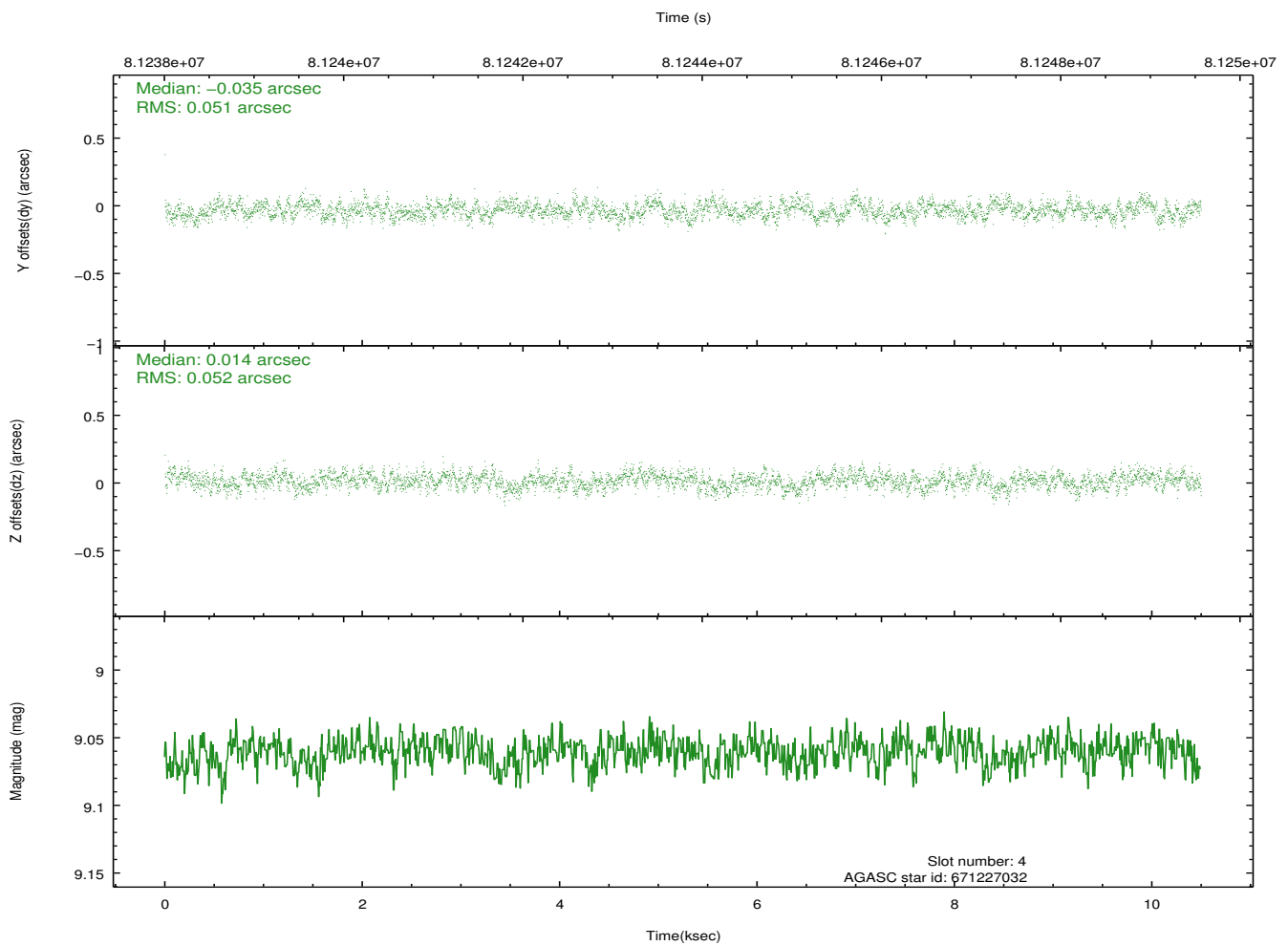
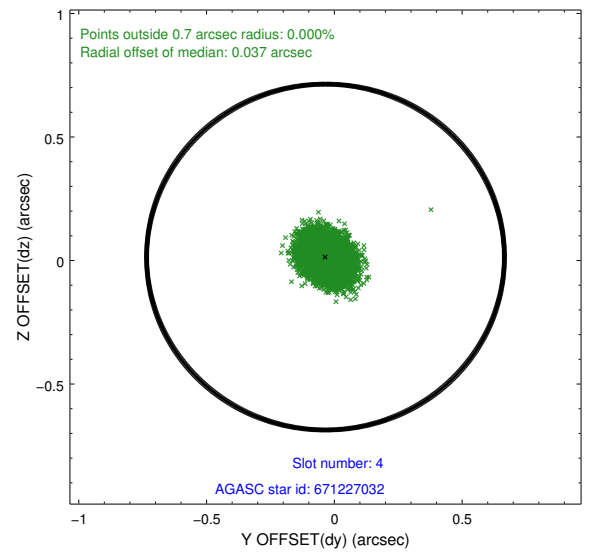
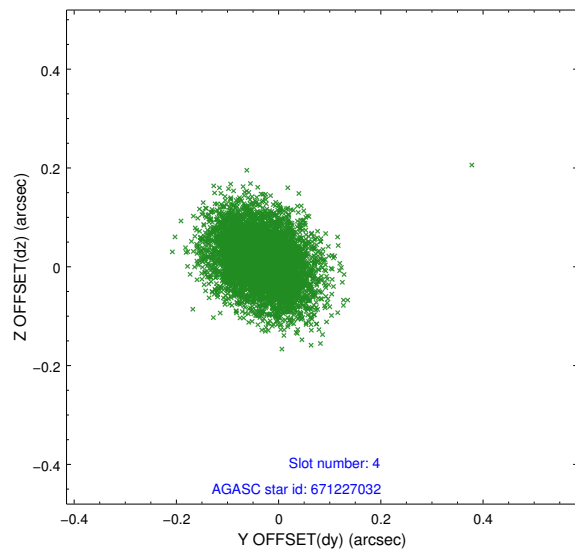
∞

## 2.4 Star Slots

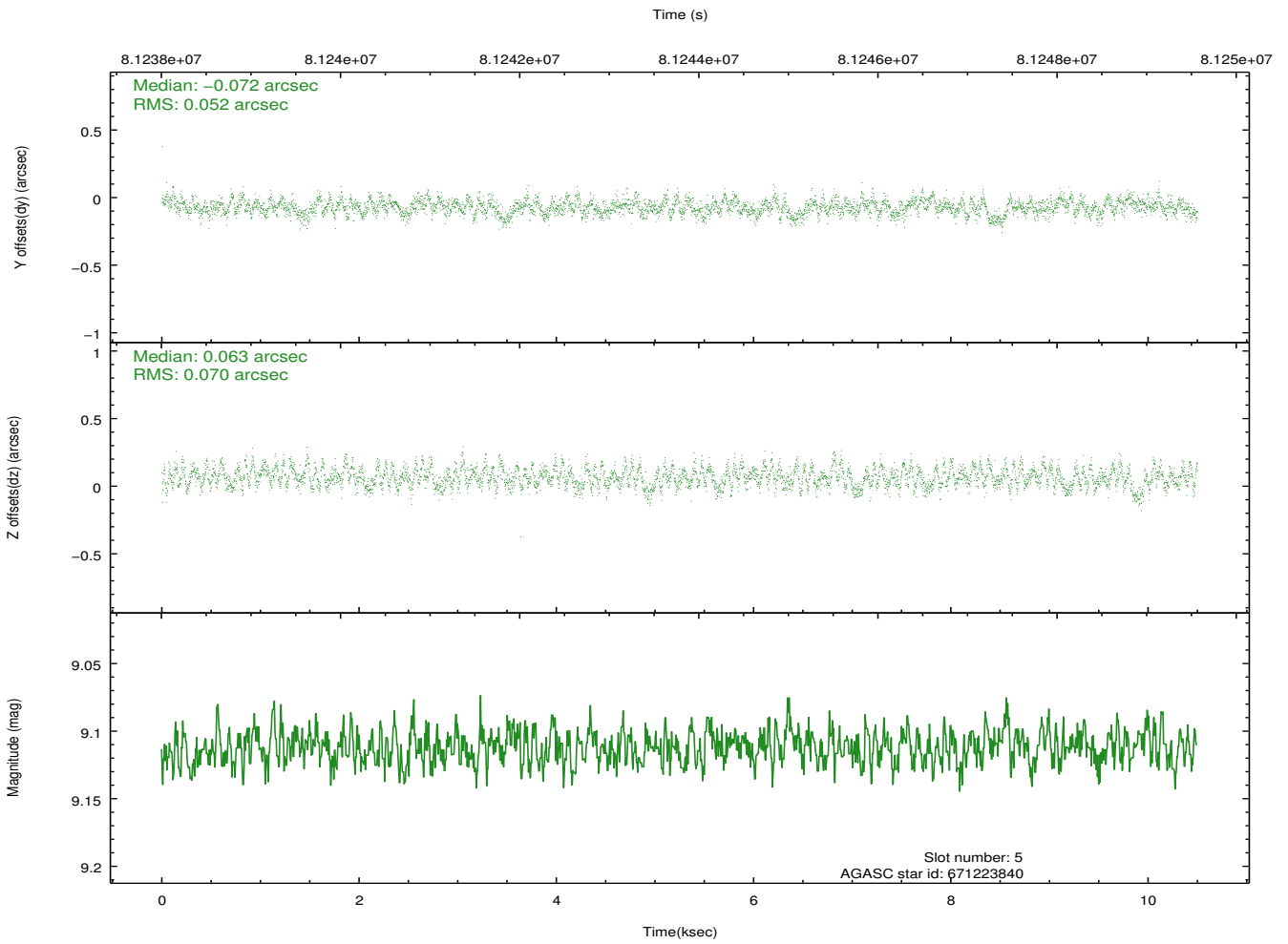
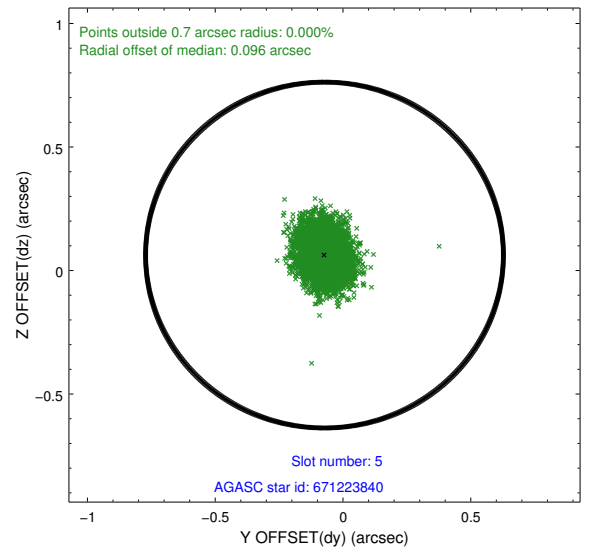
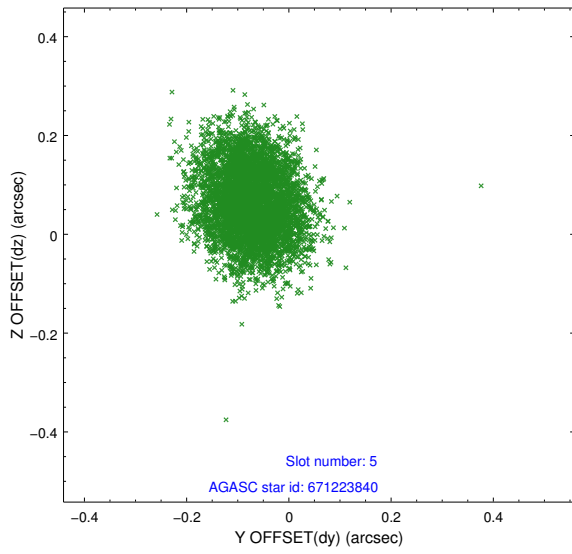
### 2.4.1 Slot 3



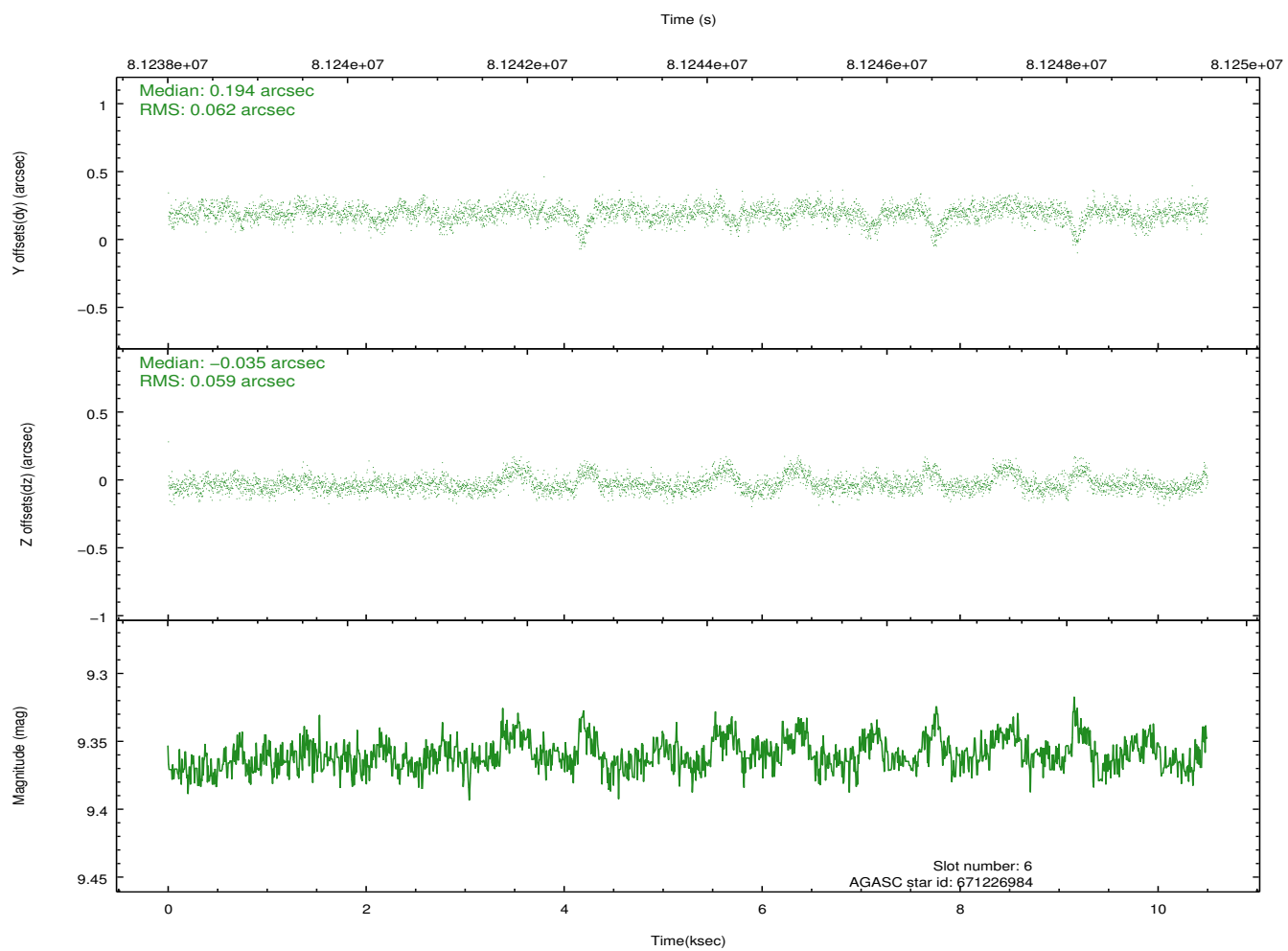
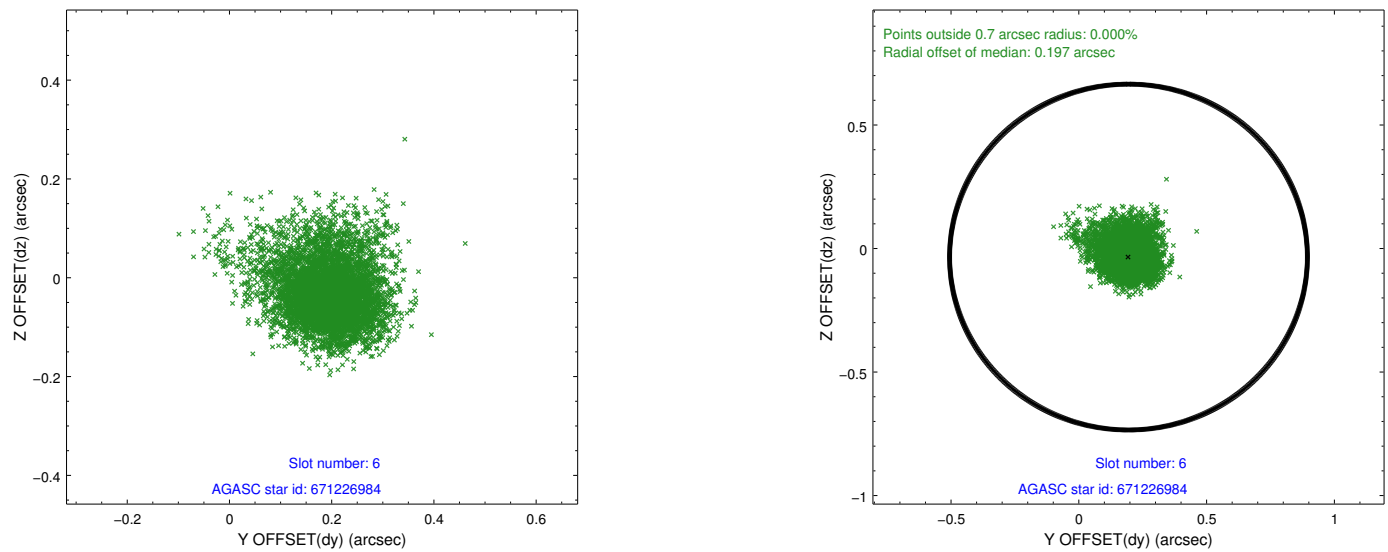
## 2.4.2 Slot 4



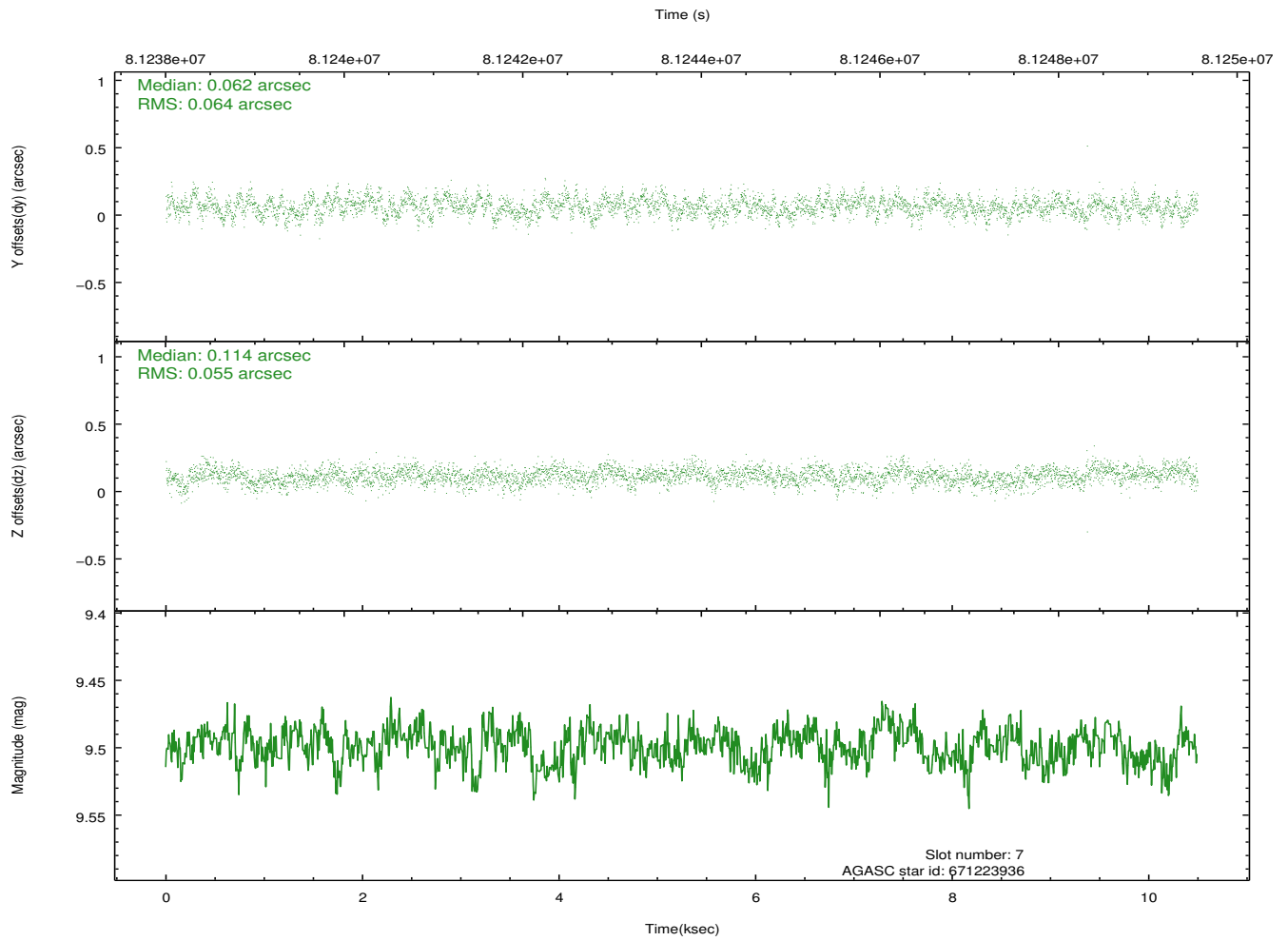
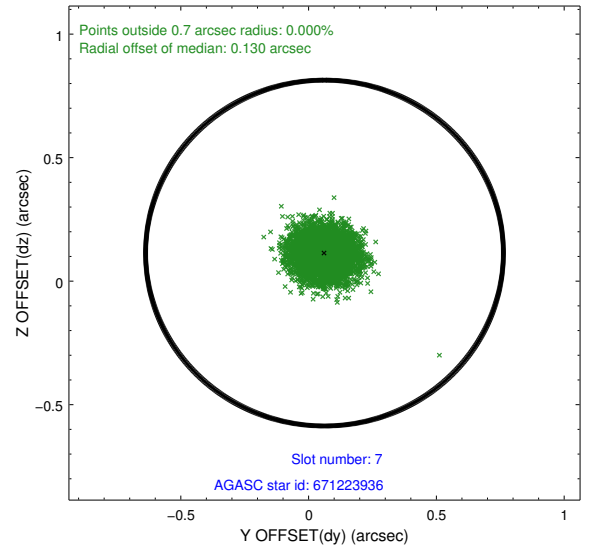
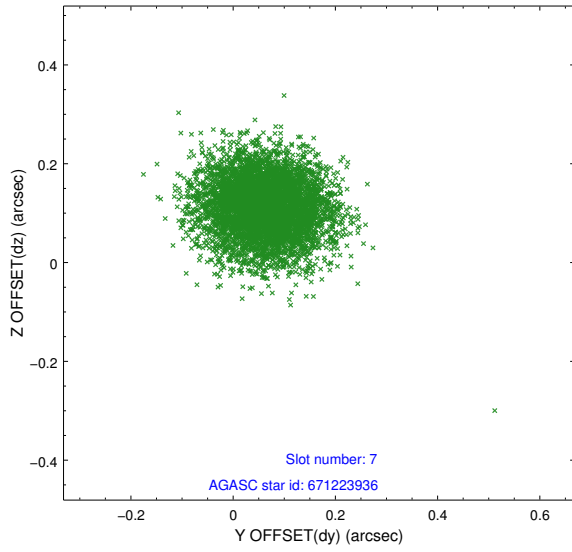
### 2.4.3 Slot 5



## 2.4.4 Slot 6

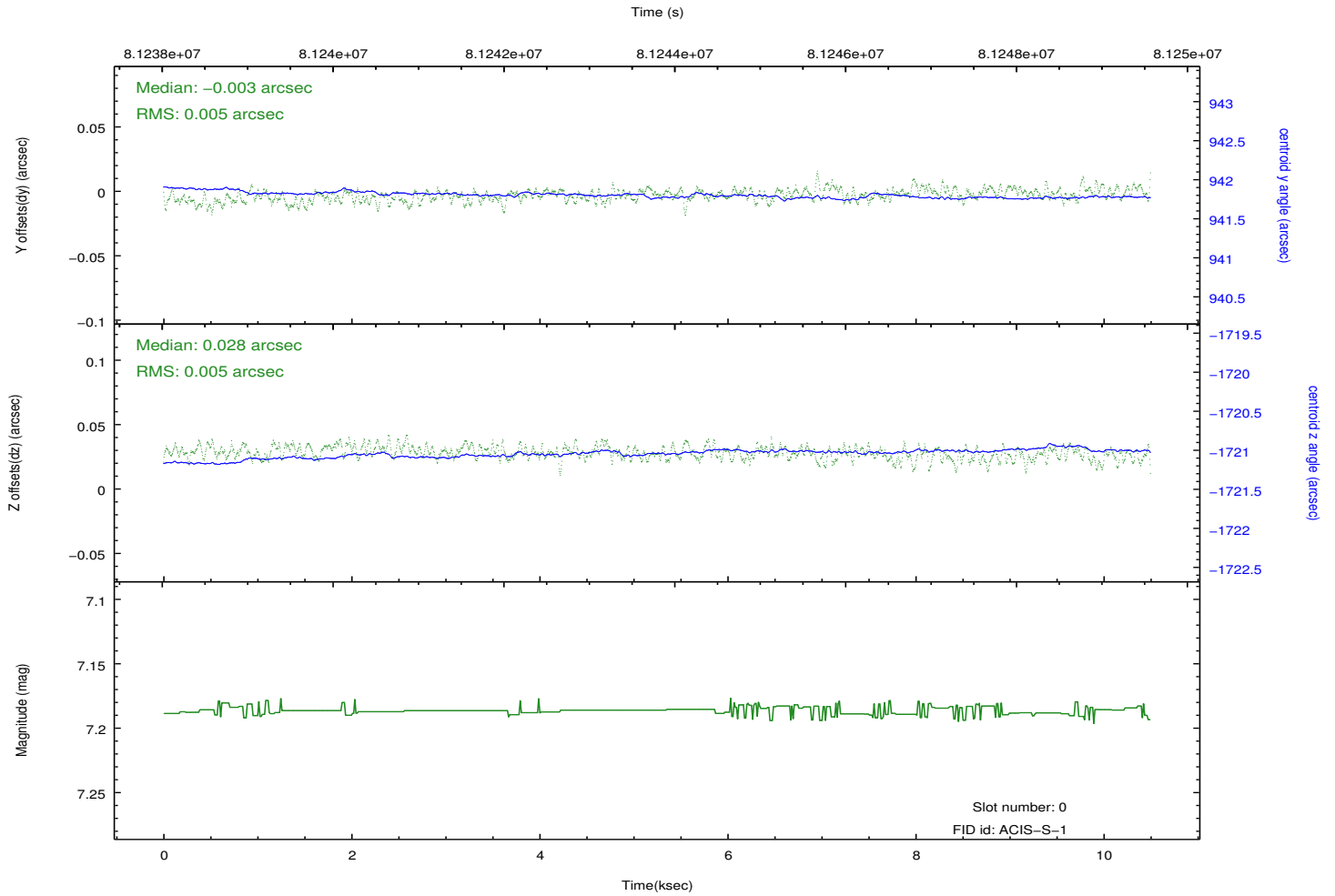
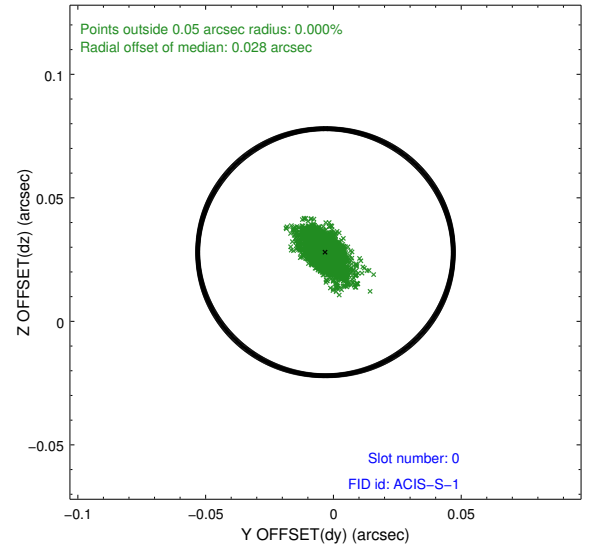
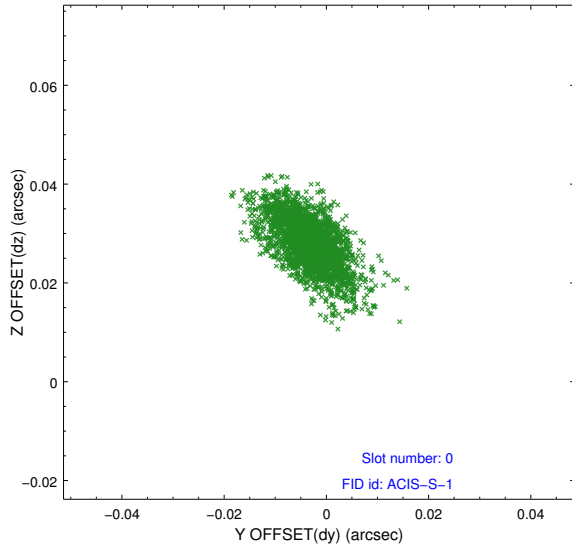


### 2.4.5 Slot 7

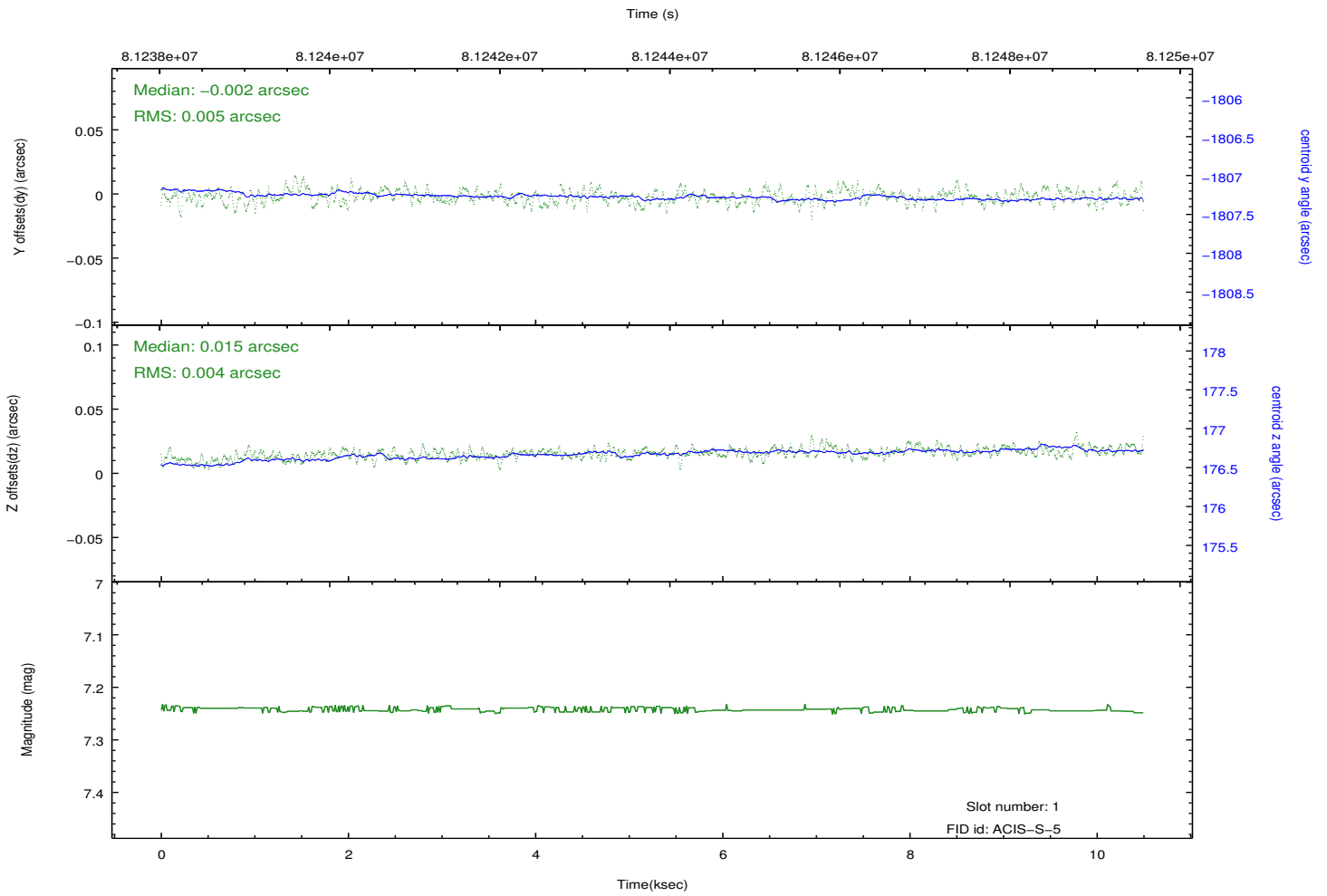
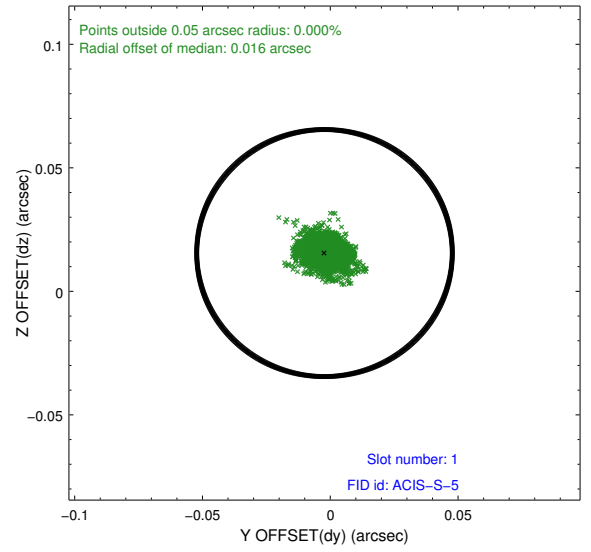
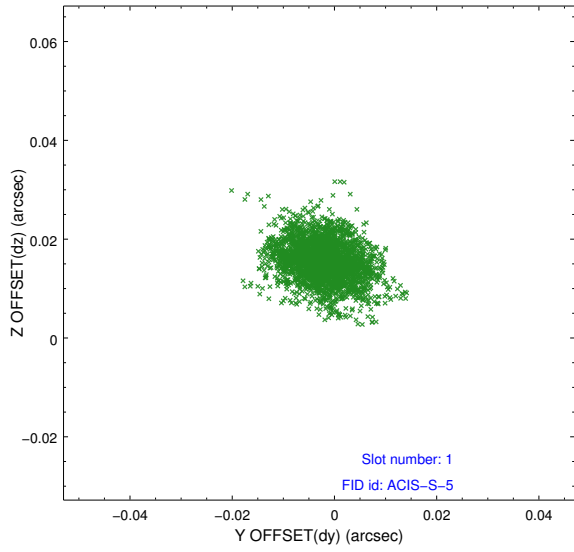


## 2.5 FID Slots

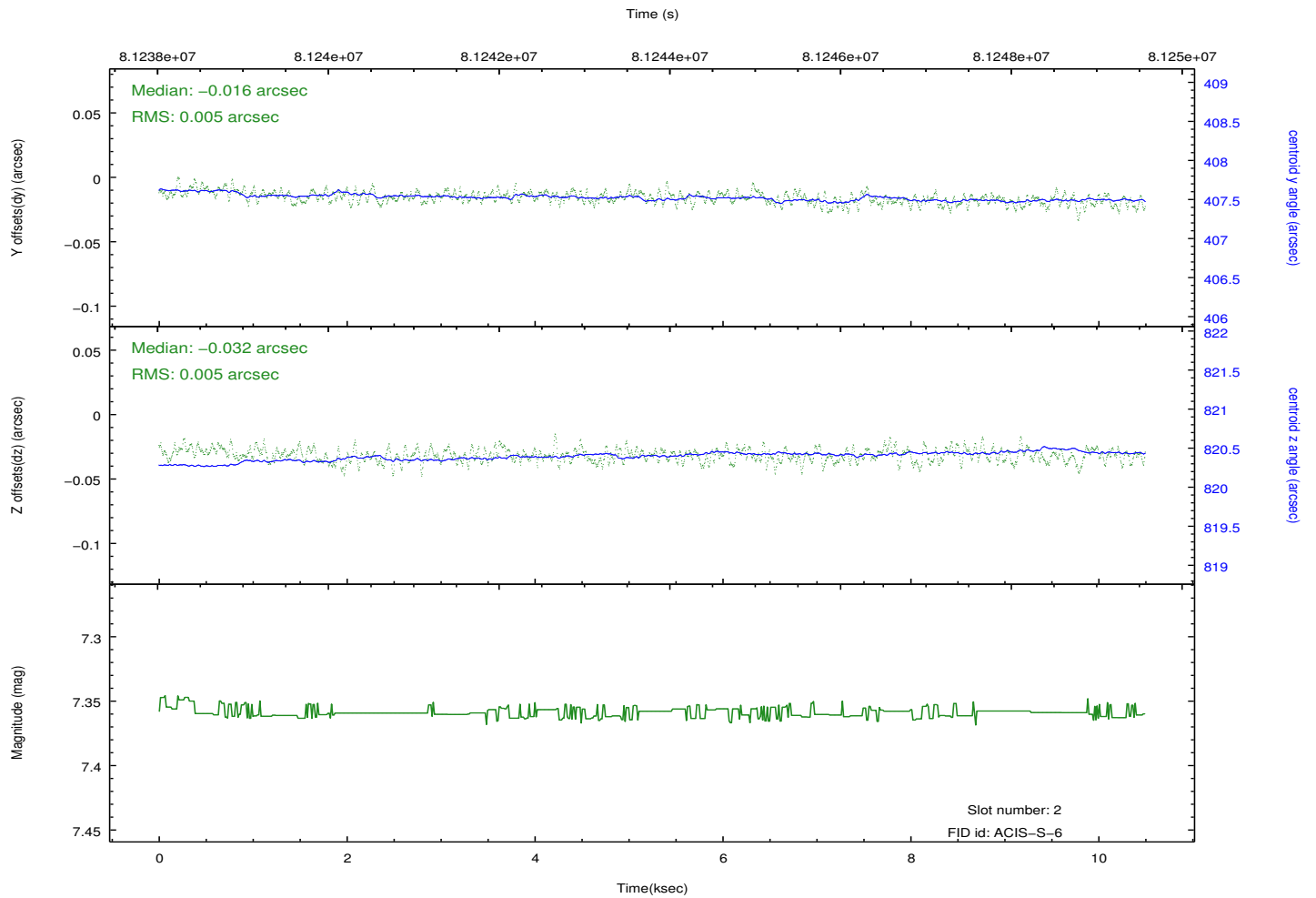
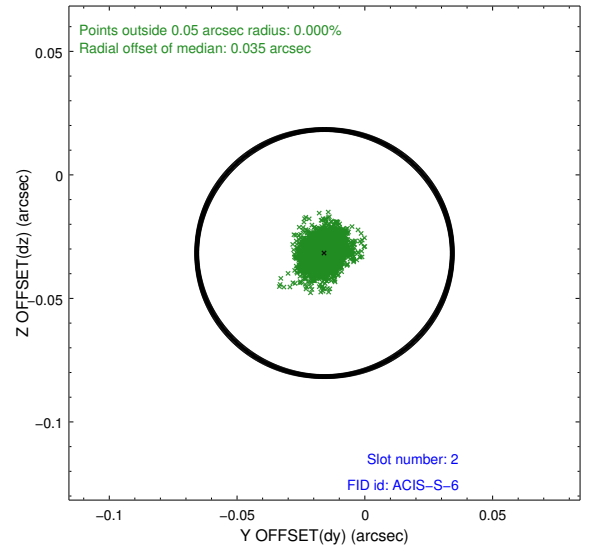
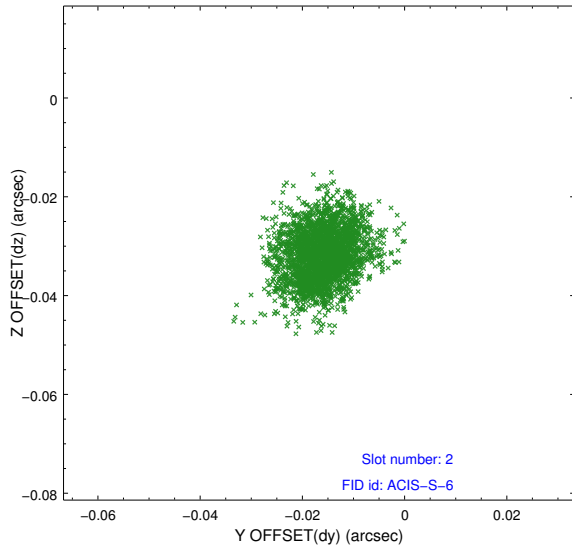
### 2.5.1 Slot 0



## 2.5.2 Slot 1



### 2.5.3 Slot 2



# A Summary

## A.1 Status

V&V Scientist	Joy Nichols
V&V Date (YYYY-MM-DD)	2012.08.31
V&V Edition	1
V&V Disposition and Status	OK
V&V Charge Time	10.496

## A.2 Comments

Source clearly present at sky  $(x,y) = (4006.9, 4233.6)$ .