

# V&V Reference Report

## L2 ASCDS Version : 8.4.4

Observation 8210 - L2 Version 2  
Chandra X-Ray Center

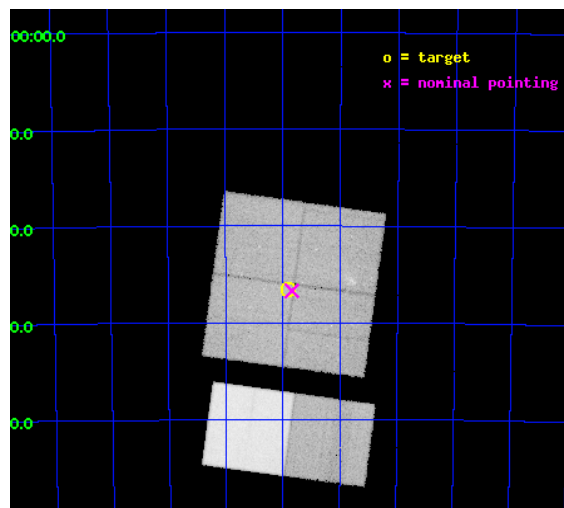
L2 Processing Date : Apr 25 2012

## Contents

<b>1</b>	<b>Front</b>	<b>2</b>
<b>2</b>	<b>OBI</b>	<b>3</b>
2.1	OBI . . . . .	3
2.1.1	Images . . . . .	3
2.1.2	Bias . . . . .	3
2.1.3	Parameters . . . . .	4
2.1.4	Events . . . . .	4
2.2	Compared Parameters . . . . .	5
2.3	Aspect . . . . .	6
2.4	Star Slots . . . . .	9
2.4.1	Slot 3 . . . . .	9
2.4.2	Slot 4 . . . . .	10
2.4.3	Slot 5 . . . . .	11
2.4.4	Slot 6 . . . . .	12
2.4.5	Slot 7 . . . . .	13
2.5	FID Slots . . . . .	14
2.5.1	Slot 0 . . . . .	14
2.5.2	Slot 1 . . . . .	15
2.5.3	Slot 2 . . . . .	16
<b>A</b>	<b>Summary</b>	<b>17</b>
A.1	Status . . . . .	17
A.2	Comments . . . . .	17

# 1 Front

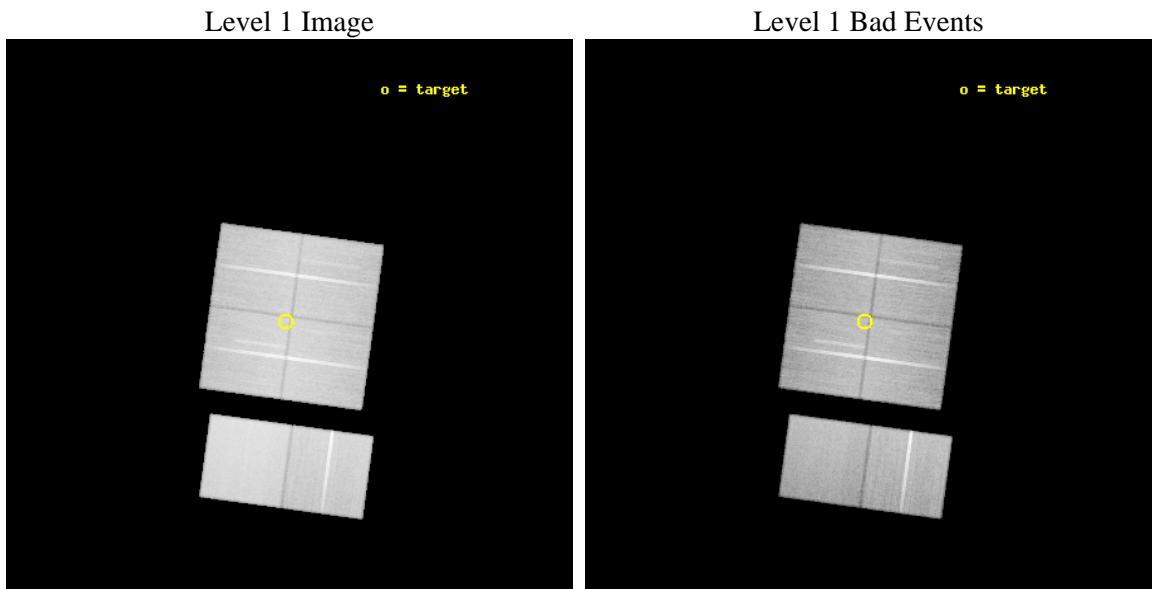
seq_num	600646	Sequence number
obs_id	8210	Observation id
title	Massive Star Formation and Energy Feedback in the Starburst Region N11	Proposal title
observer	Prof. You-Hua Chu	Principal investigator
object	LHA 120-N 11	Source name
dtcycle	0	&#160
cycle	P	events from which exps? Prim/Second/Both
ra_targ	73.979167	Observer's specified target RA [deg]
dec_targ	-66.441667	Observer's specified target Dec [deg]
ra_nom	73.960825951172	Nominal RA [deg]
dec_nom	-66.445092410133	Nominal Dec [deg]
roll_nom	187.72913227497	Nominal Roll [deg]
revision	2	Processing version of data
ontime	46069.047889411	Sum of GTIs [s]
livetime	45485.693865585	Livetime [s]
ontime0	46072.165739715	Sum of GTIs [s]
ontime1	46072.206779718	Sum of GTIs [s]
ontime2	46072.247819722	Sum of GTIs [s]
ontime3	46069.047889411	Sum of GTIs [s]
ontime6	46072.370939732	Sum of GTIs [s]
ontime7	46072.329899728	Sum of GTIs [s]
l2events	485557	Number of level 2 events



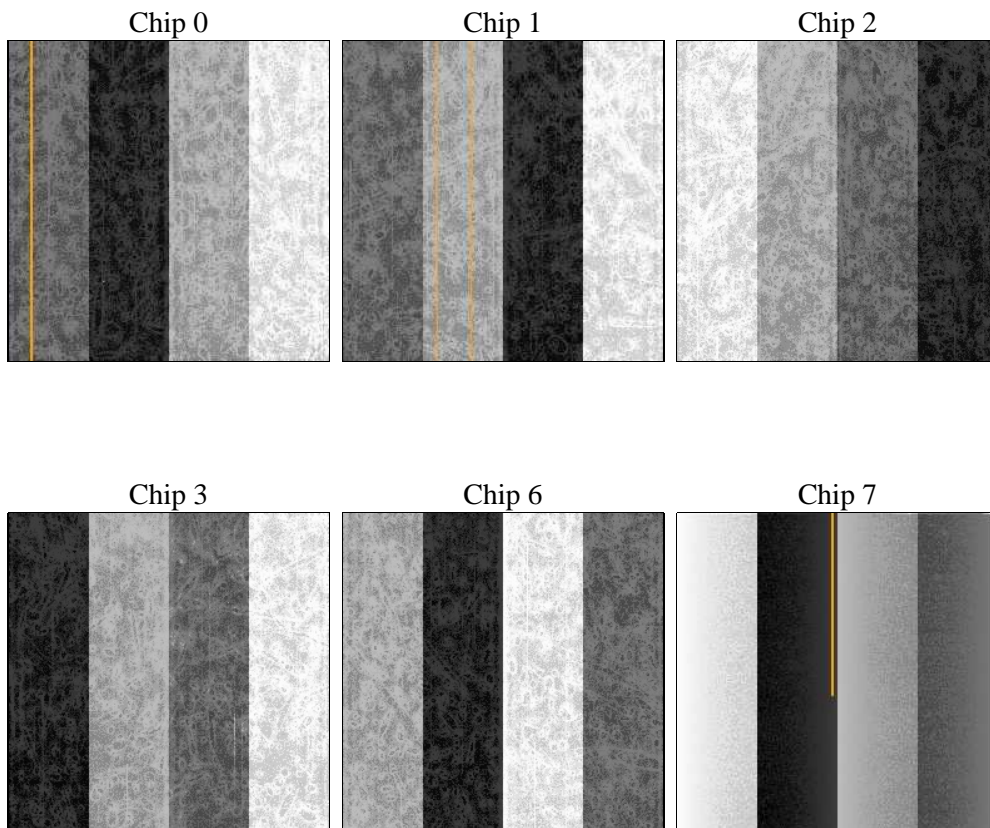
## 2 OBI

### 2.1 OBI

#### 2.1.1 Images



#### 2.1.2 Bias



### 2.1.3 Parameters

obi_num	0	Obi number	sched_exp_time	46000.000000	[s] Scheduled observation exposure time
ascdsver	8.4.4	Processing system revision	ontime	46069.047889411	Sum of GTIs [s]
caldbver	4.4.9	&#160	ontime0	46072.165739715	Sum of GTIs [s]
date	2012-04-25T11:11:49	Date and time of file creation	ontime1	46072.206779718	Sum of GTIs [s]
revision	2	Processing version of data	ontime2	46072.247819722	Sum of GTIs [s]
			ontime3	46069.047889411	Sum of GTIs [s]
			ontime6	46072.370939732	Sum of GTIs [s]
			ontime7	46072.329899728	Sum of GTIs [s]
			l1events	2765292	Number of level 1 events

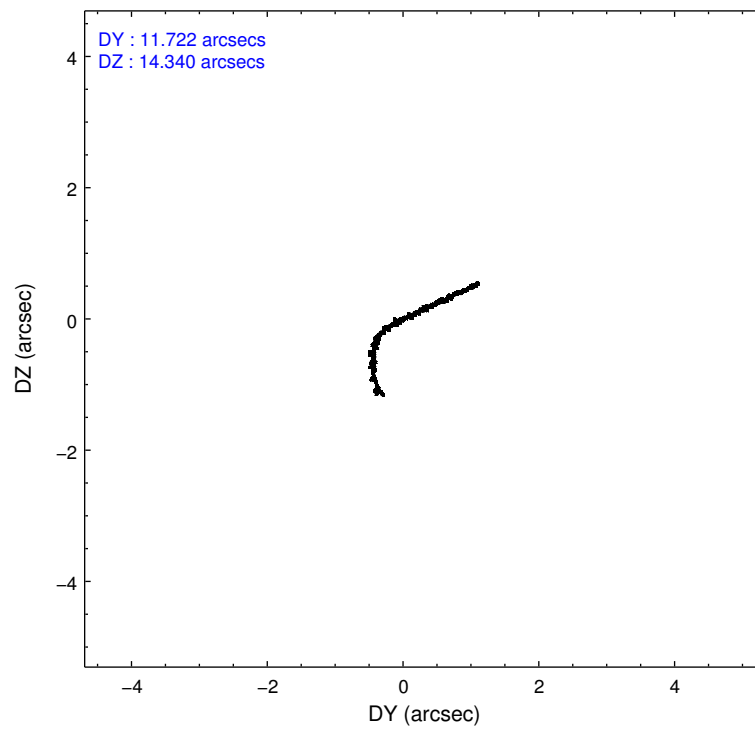
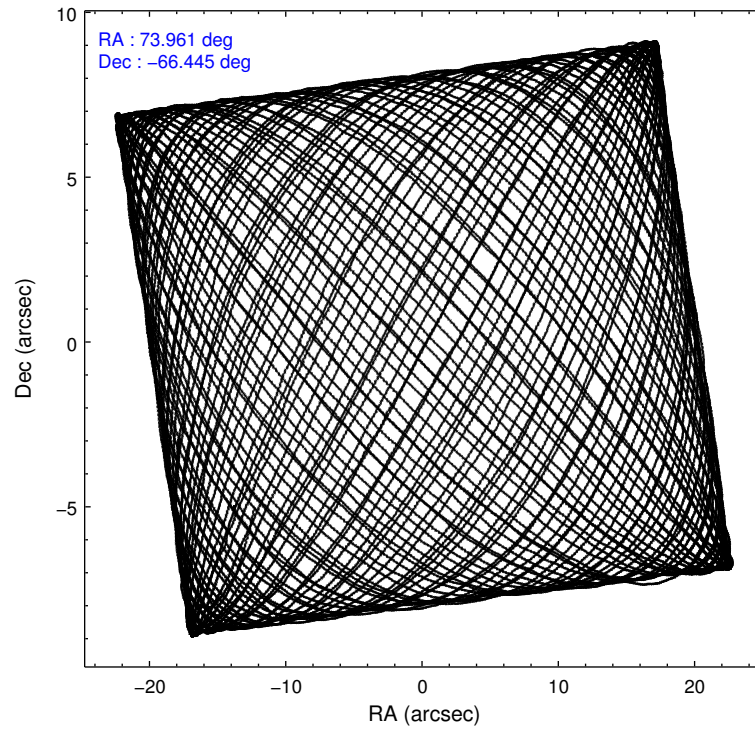
### 2.1.4 Events

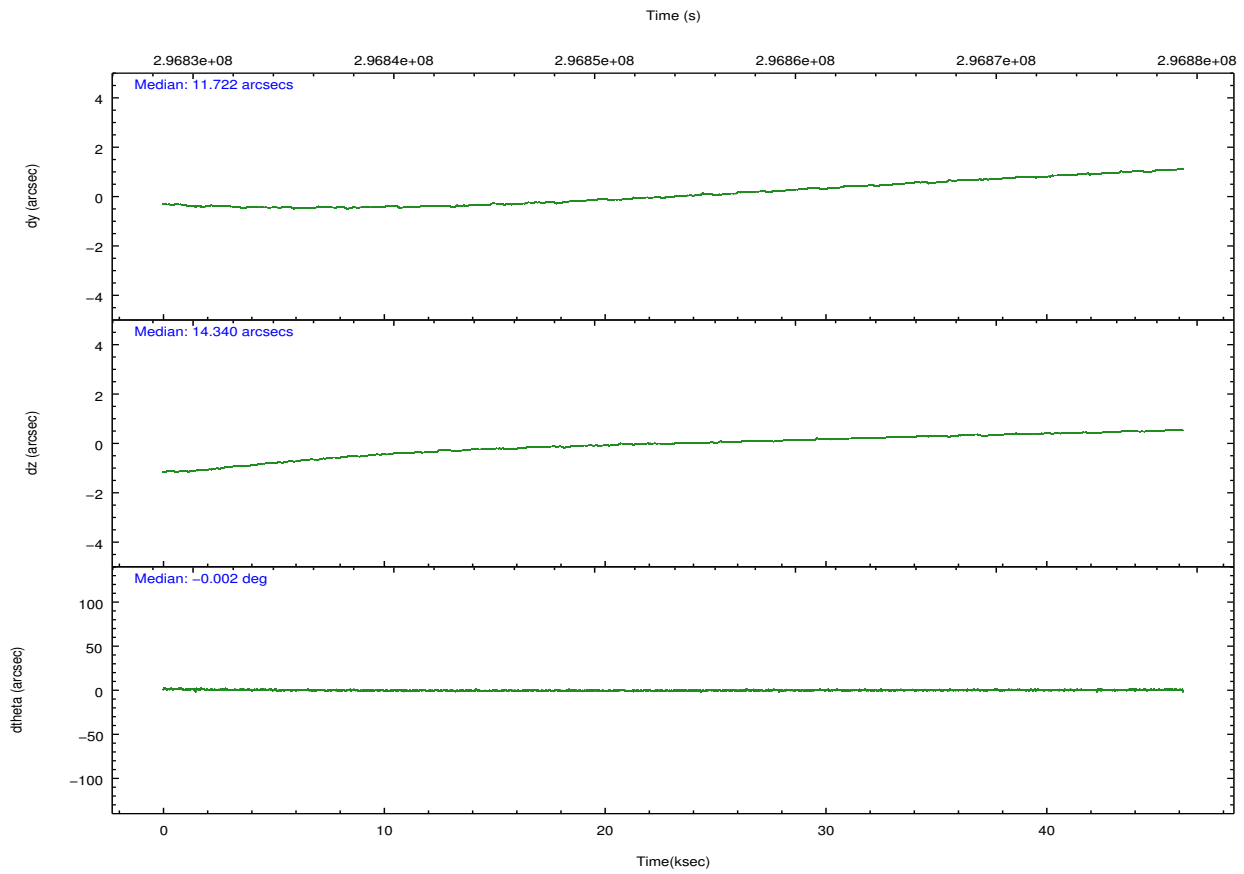
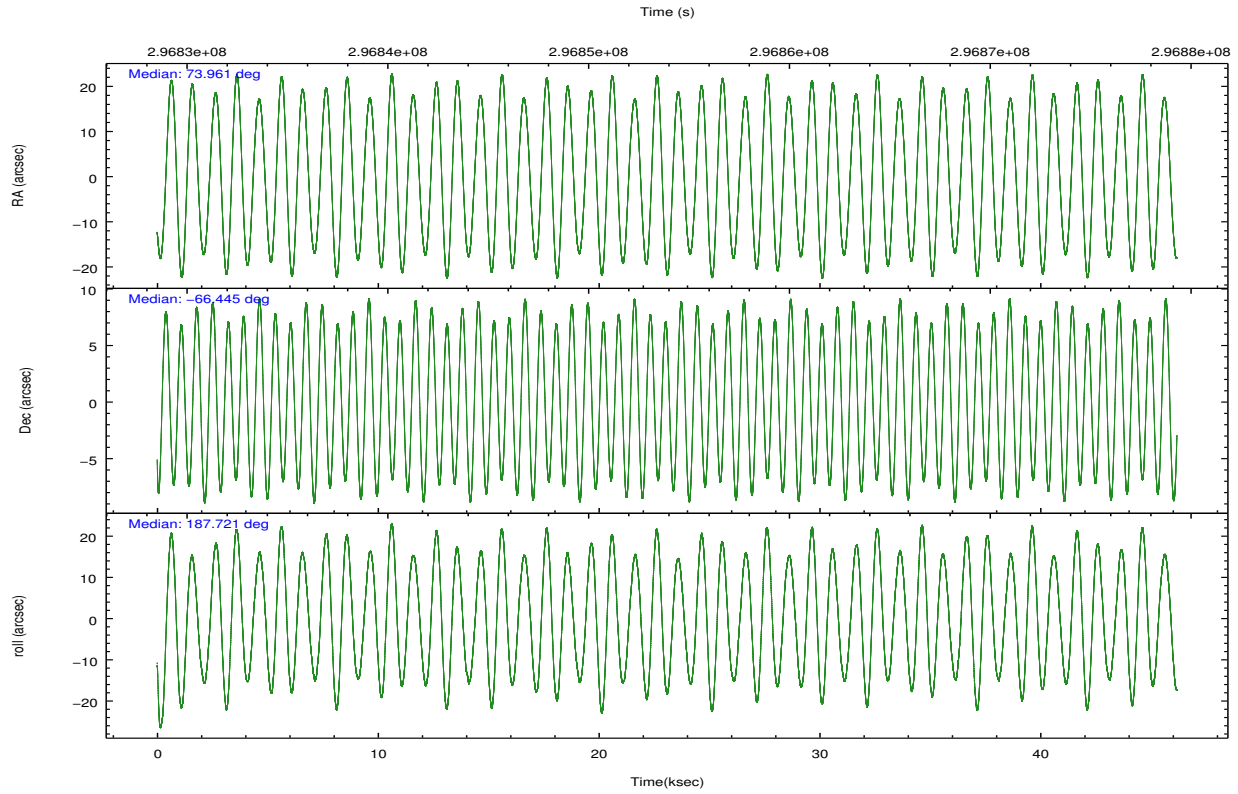
	ccd 0	ccd 1	ccd 2	ccd 3	ccd 6	ccd 7		ccd 0	ccd 1	ccd 2	ccd 3	ccd 6	ccd 7
level 1 events	408504	411750	446313	441616	455489	601620	grade 0 events	24956	23201	24740	25752	20632	22694
rejected events	352547	353936	392429	386237	402472	349192		6%	5%	5%	5%	4%	3%
rejected %	86%	85%	87%	87%	88%	58%	grade 1 events	280	219	305	329	266	571
								0%	0%	0%	0%	0%	0%
							grade 2 events	12079	13294	11022	10532	11707	51379
								2%	3%	2%	2%	2%	8%
							grade 3 events	5073	5293	4641	4921	4903	21730
								1%	1%	1%	1%	1%	3%
							grade 4 events	4771	5247	4788	4896	4827	21422
								1%	1%	1%	1%	1%	3%
							grade 5 events	17473	19061	17348	20258	20787	56305
								4%	4%	3%	4%	4%	9%
							grade 6 events	9087	10783	8704	9284	10950	135219
								2%	2%	1%	2%	2%	22%
							grade 7 events	334785	334652	374765	365644	381417	292300
								81%	81%	83%	82%	83%	48%

## 2.2 Compared Parameters

Parameter	Planned	Actual	Parameter	Planned	Actual
Instrument	ACIS	ACIS	Obspar format version number	7	7
Detector	ACIS-012367	ACIS-012367	Obspar file type	PREDICTED	ACTUAL
Grating	NONE	NONE	Obspar update status	NONE	UPDATED
Data mode	FAINT	FAINT	CCD I0 on	Y	Y
Observation mode	POINTING	POINTING	CCD I1 on	Y	Y
[deg] Pointing RA	74.015054	73.960825951172	CCD I2 on	Y	Y
[deg] Pointing Dec	-66.428164	-66.44509241013323	CCD I3 on	Y	Y
[deg] Pointing Roll	187.570152	187.7291322749733	CCD S0 on	N	N
[mm] SIM focus pos	-0.782348	-0.7809083437167272	CCD S1 on	N	N
[mm] SIM defocus	0	0.001439871863259334	CCD S2 on	O1	Y
[mm] SIM translation stage pos	-233.592463	-233.5874344608287	CCD S3 on	O2	Y
[mm] SIM translation stage offset	0	-0.005018542100998502	CCD S4 on	N	N
[s] Observation start time (MET)	296830980.184000	296829959.90314	CCD S5 on	N	N
Observation start date	2007-05-29T13:01:55	2007-05-29T12:45:59	Number of optional ACIS chips dropped	0	0
[s] Observation end time (MET)	296876980.184000	296877766.93042	On-chip summing requested	N	N
Observation end date	2007-05-30T01:48:35	2007-05-30T02:02:46	Subarray requested	NONE	NONE
Read mode	TIMED	TIMED	Alternating exposures requested	N	N
			[s] Primary exposure time	0.000000	3.2

## 2.3 Aspect





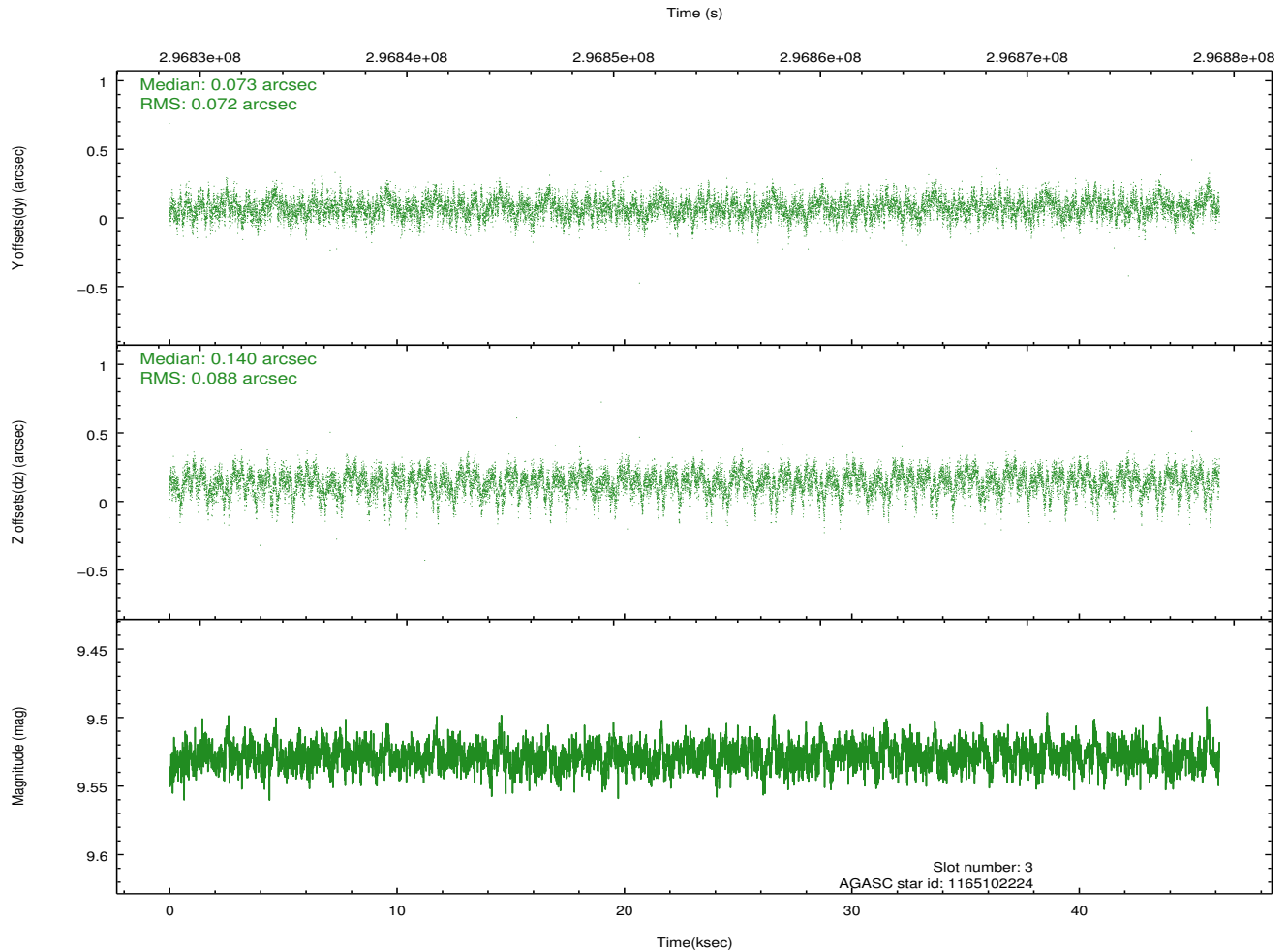
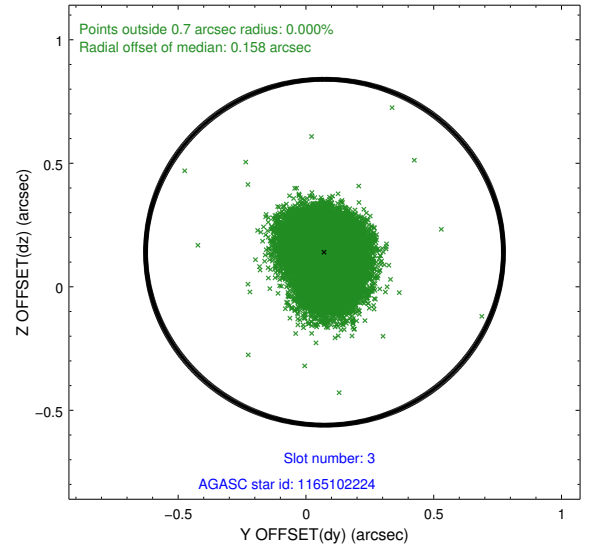
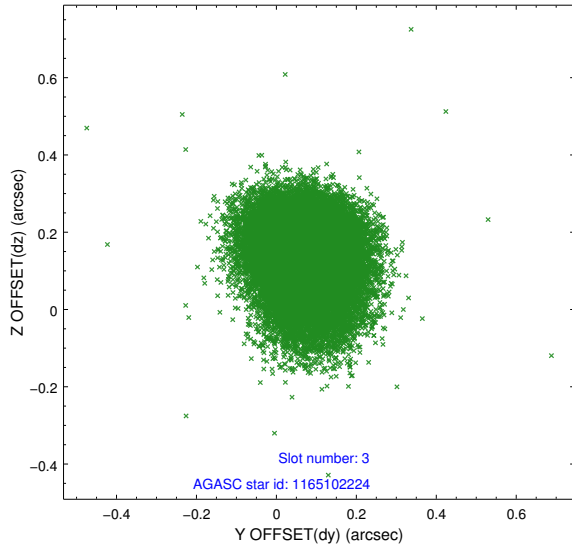
### Slot Statistics

slot	status	id	mag	n_pts	med_dy	med_dz	dr1	dr2	ra	dec	mean_y	mean_z
0	FID	ACIS-I-1	7.23	11263	0.024	0.002	0.013	0.021	0.000000	0.000000	927.73	-837.83
1	FID	ACIS-I-5	7.23	11264	-0.196	0.033	0.010	0.017	0.000000	0.000000	-1820.61	1059.68
2	FID	ACIS-I-6	7.23	11263	0.081	0.038	0.015	0.028	0.000000	0.000000	393.33	1704.19
3	GUIDE	1165102224	9.53	22507	0.073	0.140	0.119	0.198	75.124856	-66.013882	-1804.16	-1250.21
4	GUIDE	1165102624	8.87	22515	-0.065	-0.112	0.096	0.152	75.776434	-66.910082	-2232.09	2081.87
5	GUIDE	1165103200	9.13	22515	0.057	-0.035	0.095	0.153	74.569037	-66.260082	-874.91	-490.30
6	GUIDE	1165103840	9.76	22493	0.042	0.051	0.120	0.191	74.488651	-66.144068	-817.60	-920.20
7	GUIDE	1164978064	10.07	22475	-0.111	-0.050	0.148	0.247	72.711194	-65.933377	1665.73	-1997.67

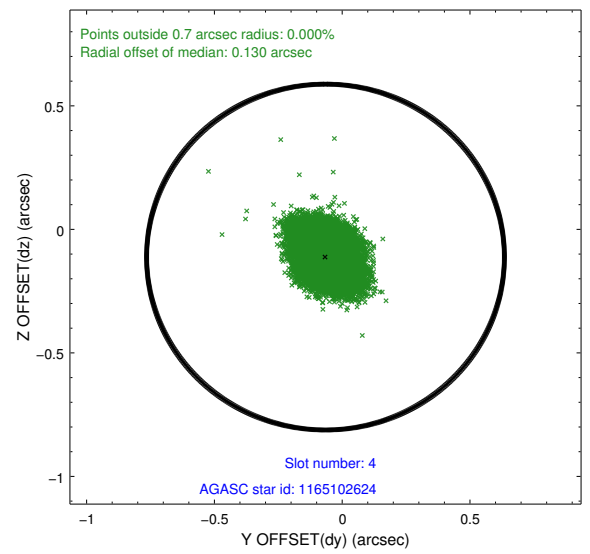
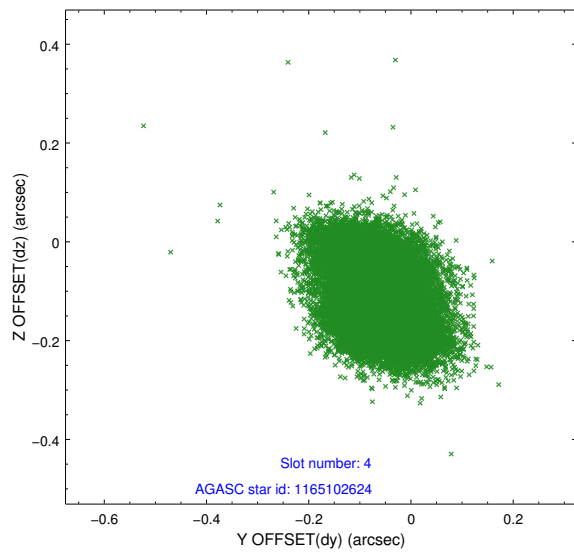
∞

## 2.4 Star Slots

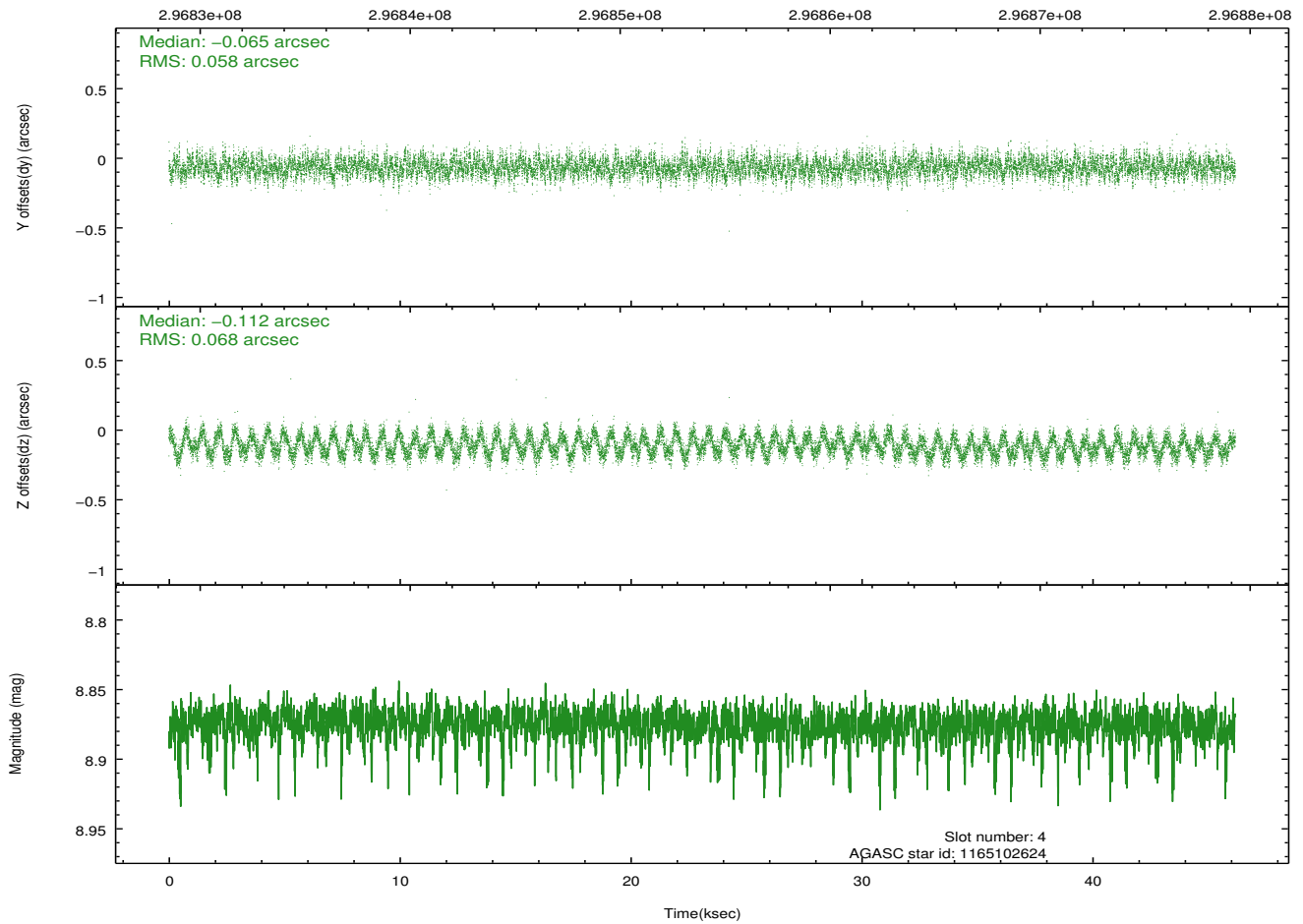
### 2.4.1 Slot 3



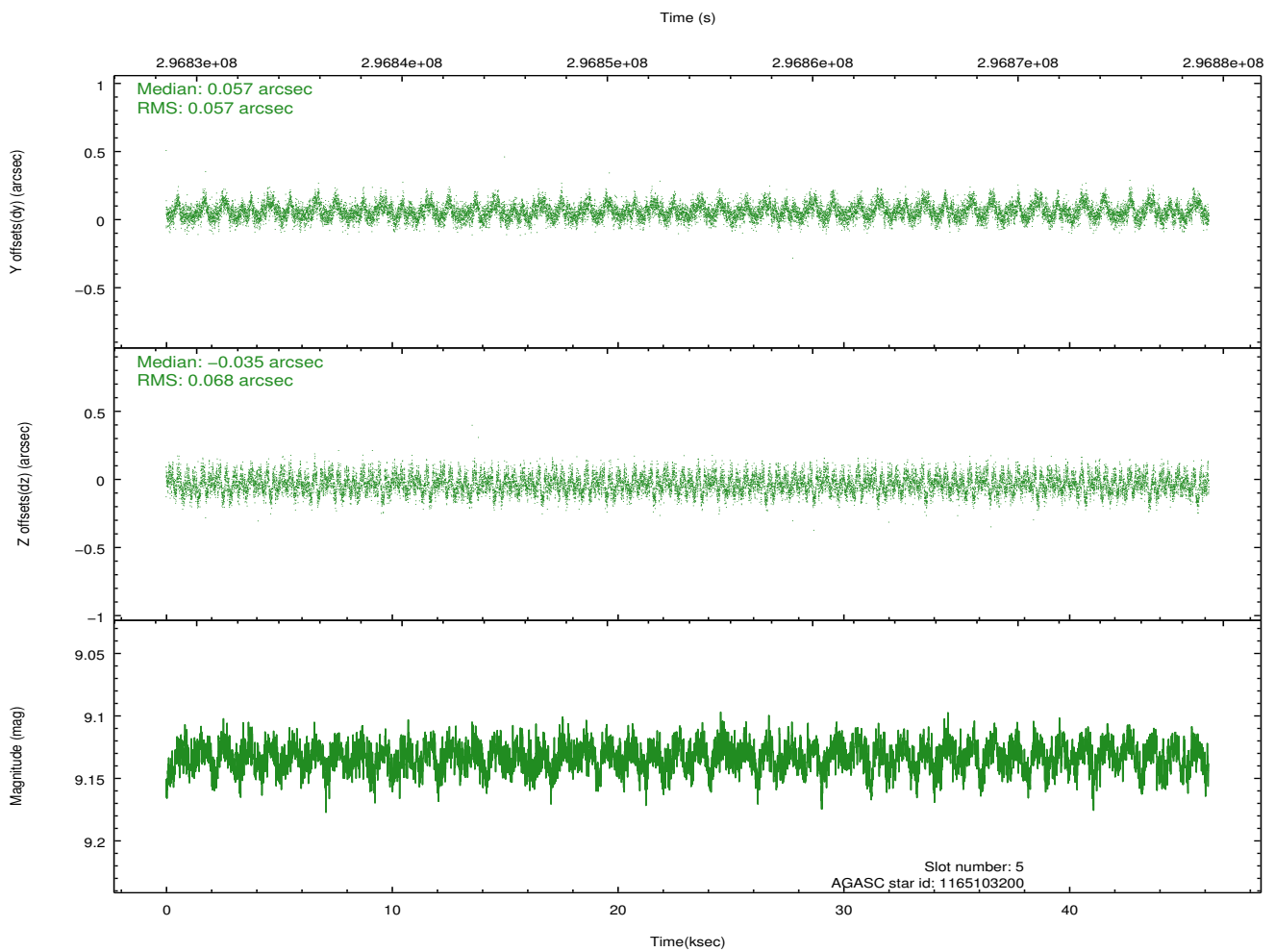
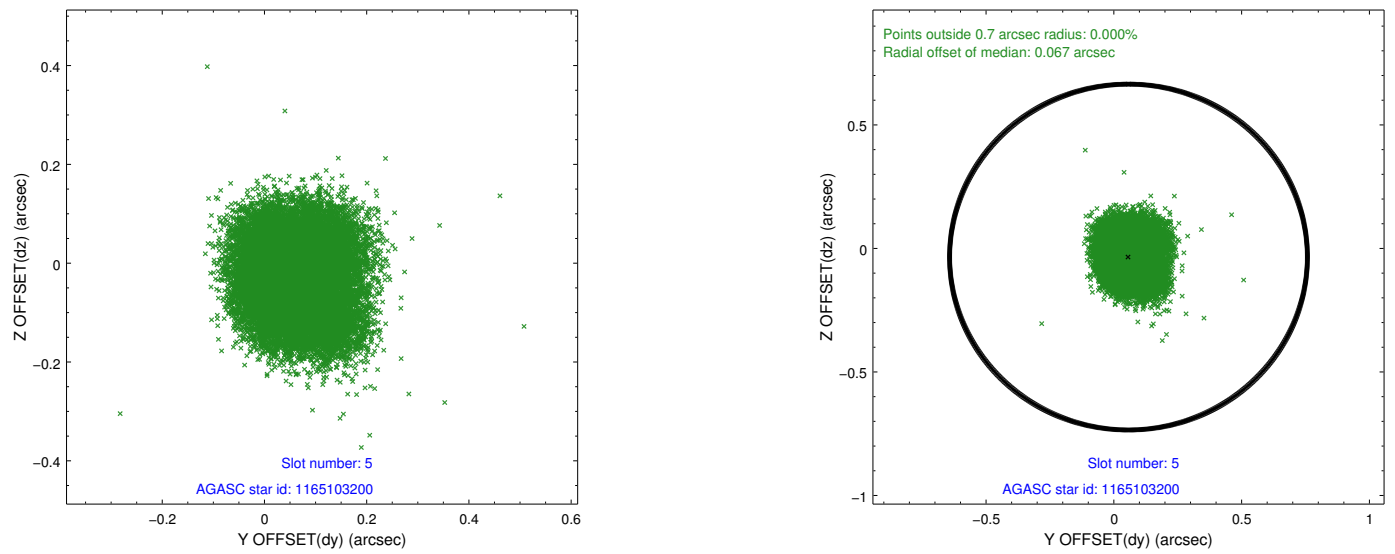
## 2.4.2 Slot 4



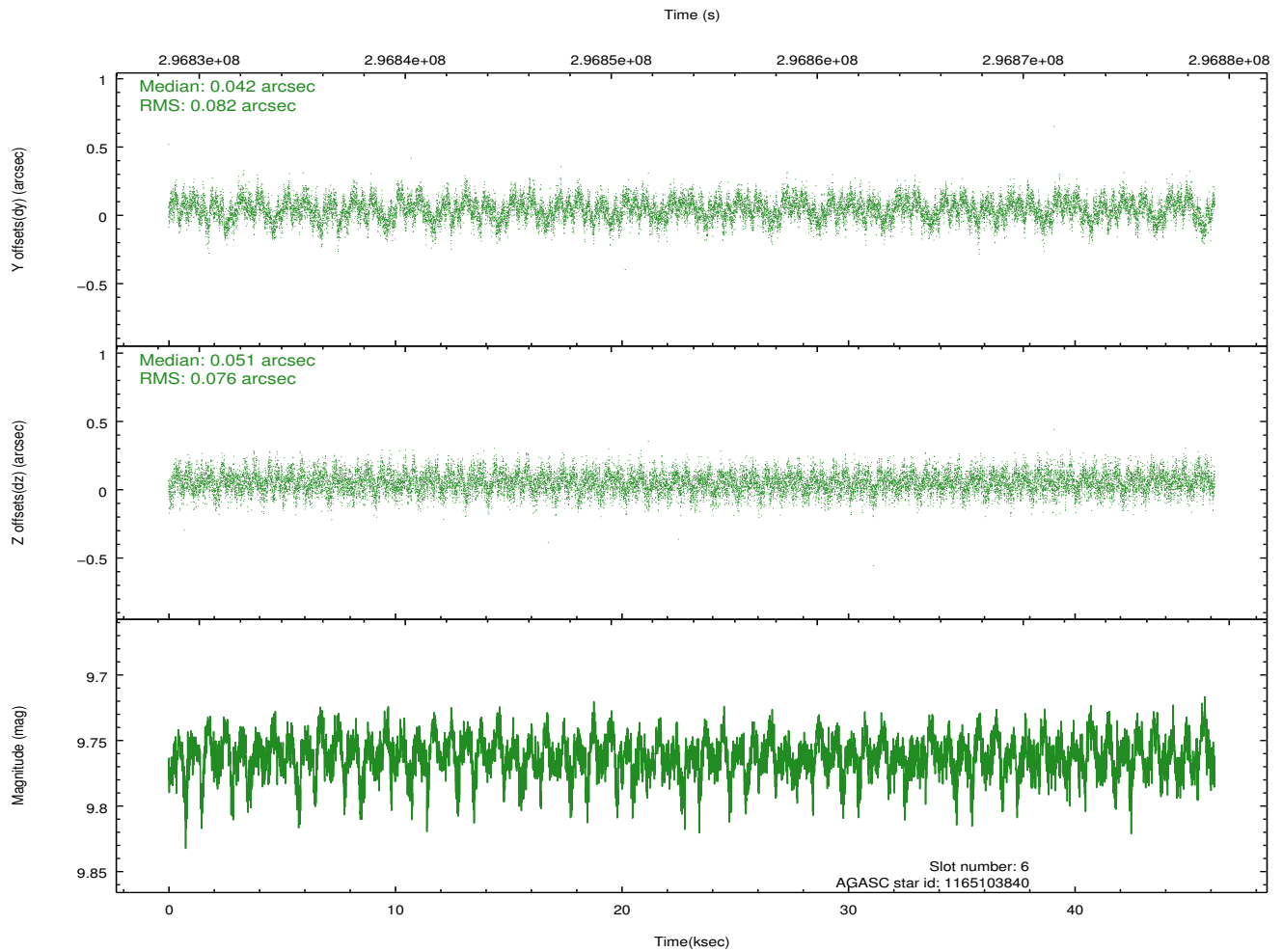
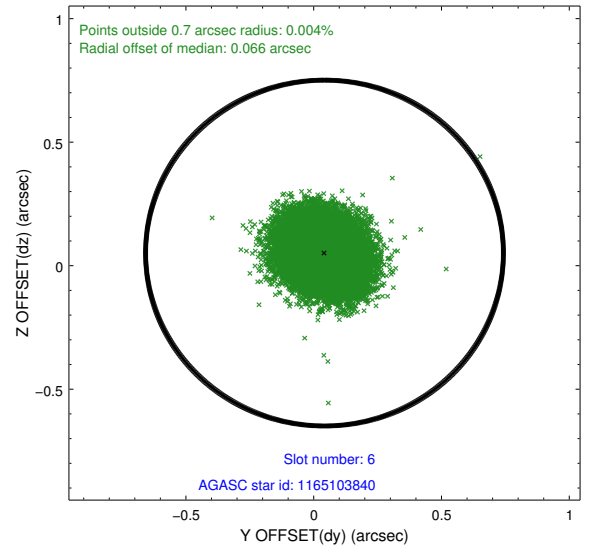
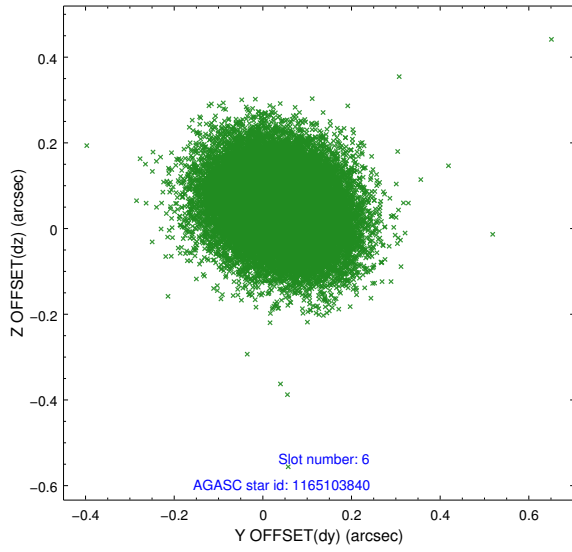
Time (s)



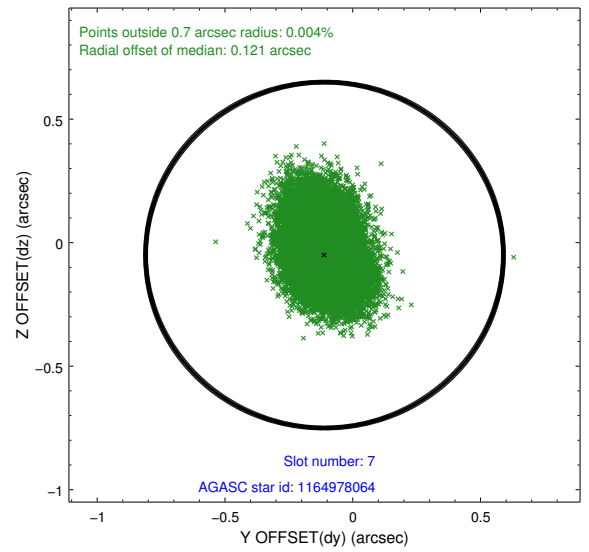
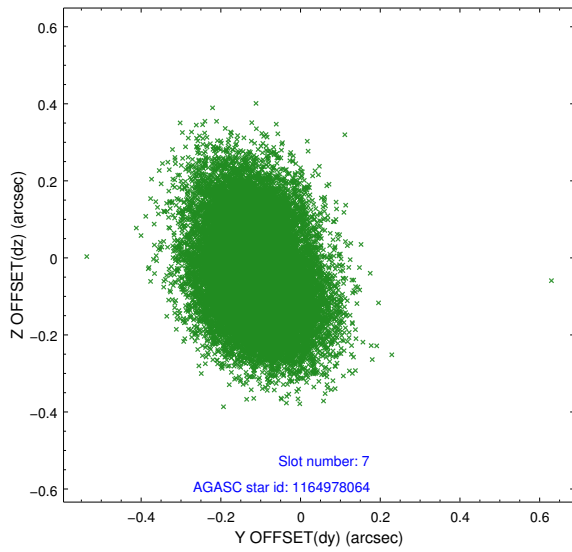
### 2.4.3 Slot 5



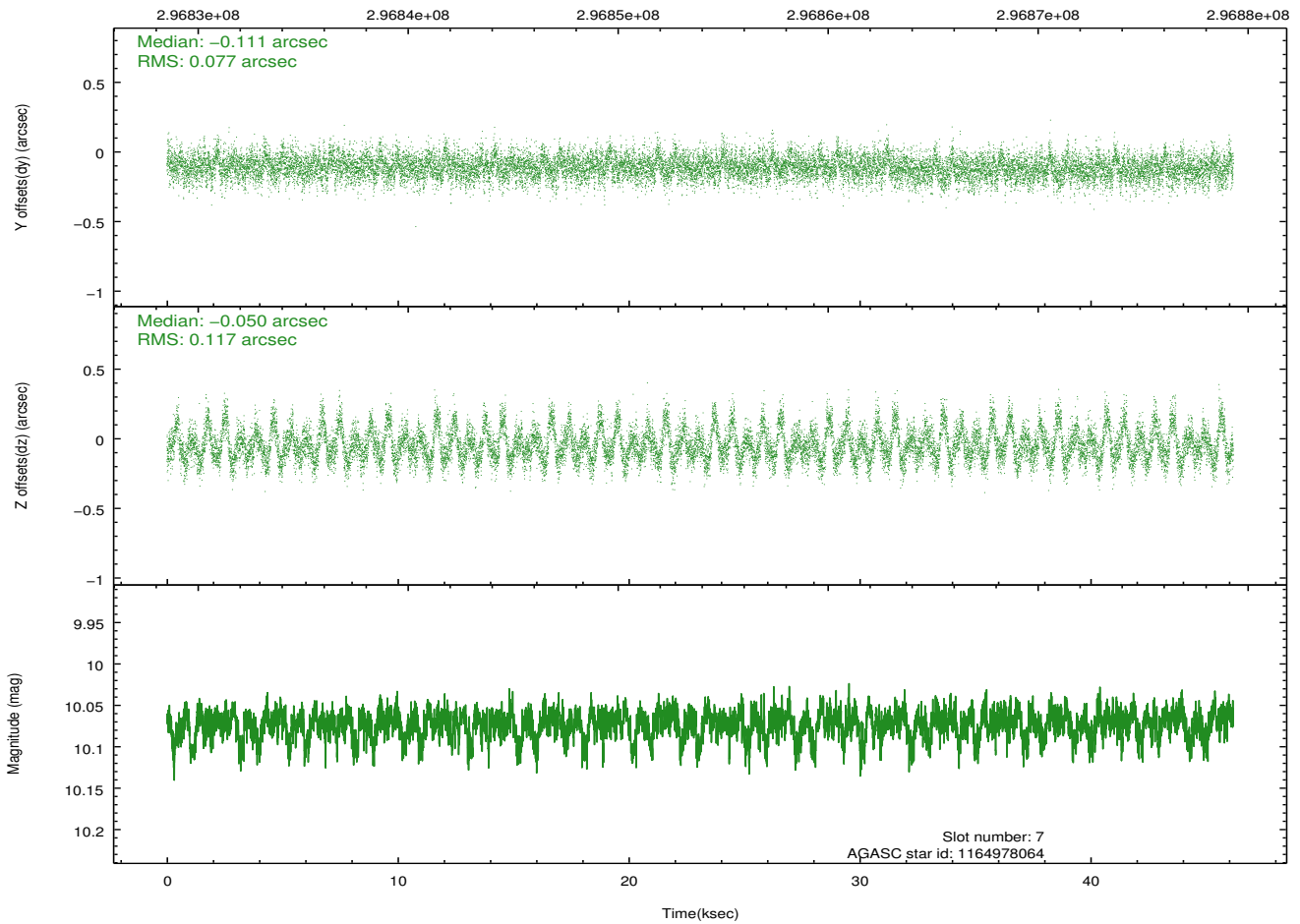
### 2.4.4 Slot 6



## 2.4.5 Slot 7

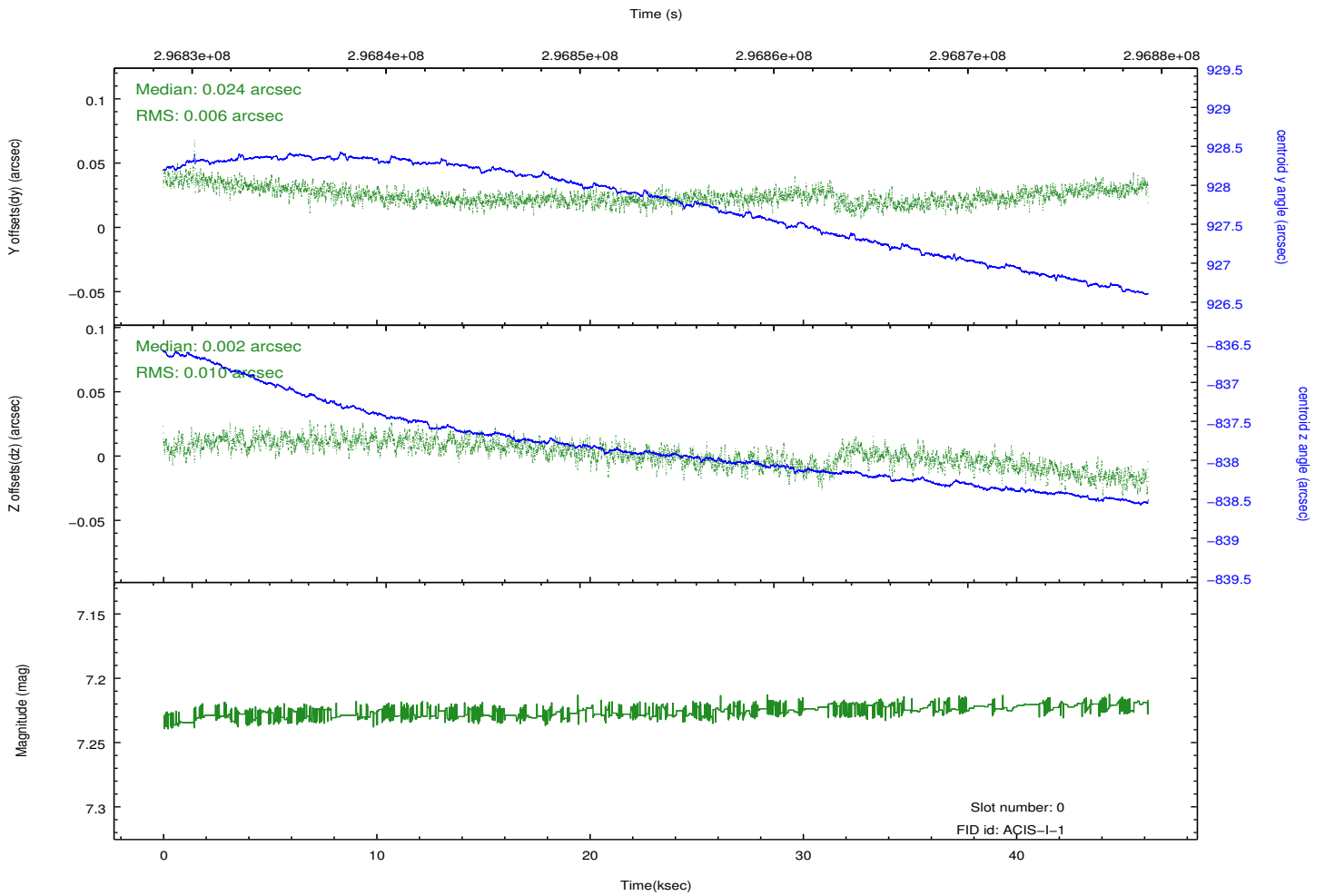
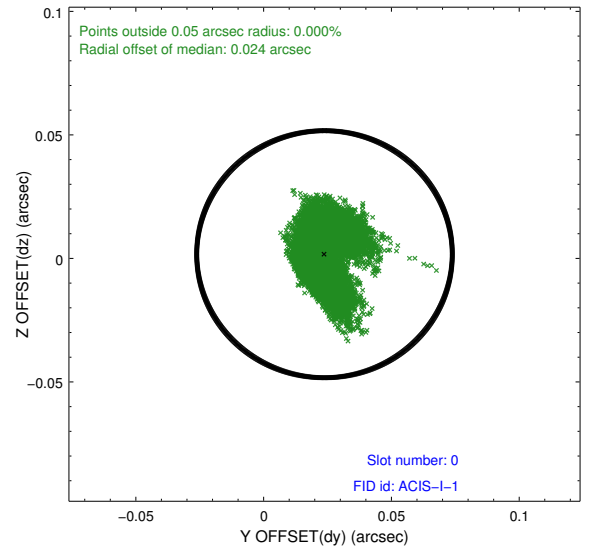
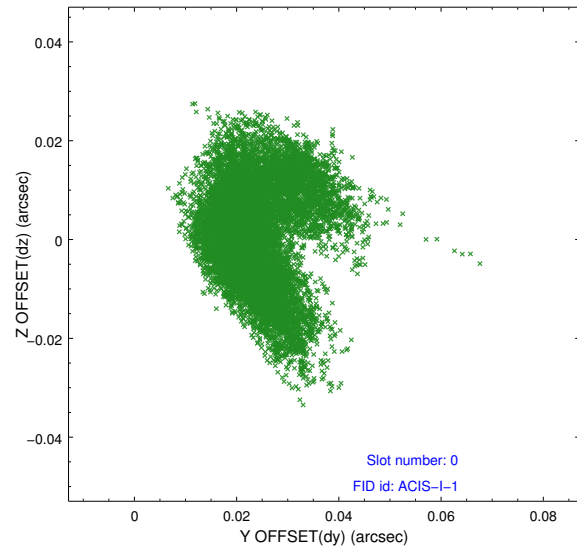


Time (s)

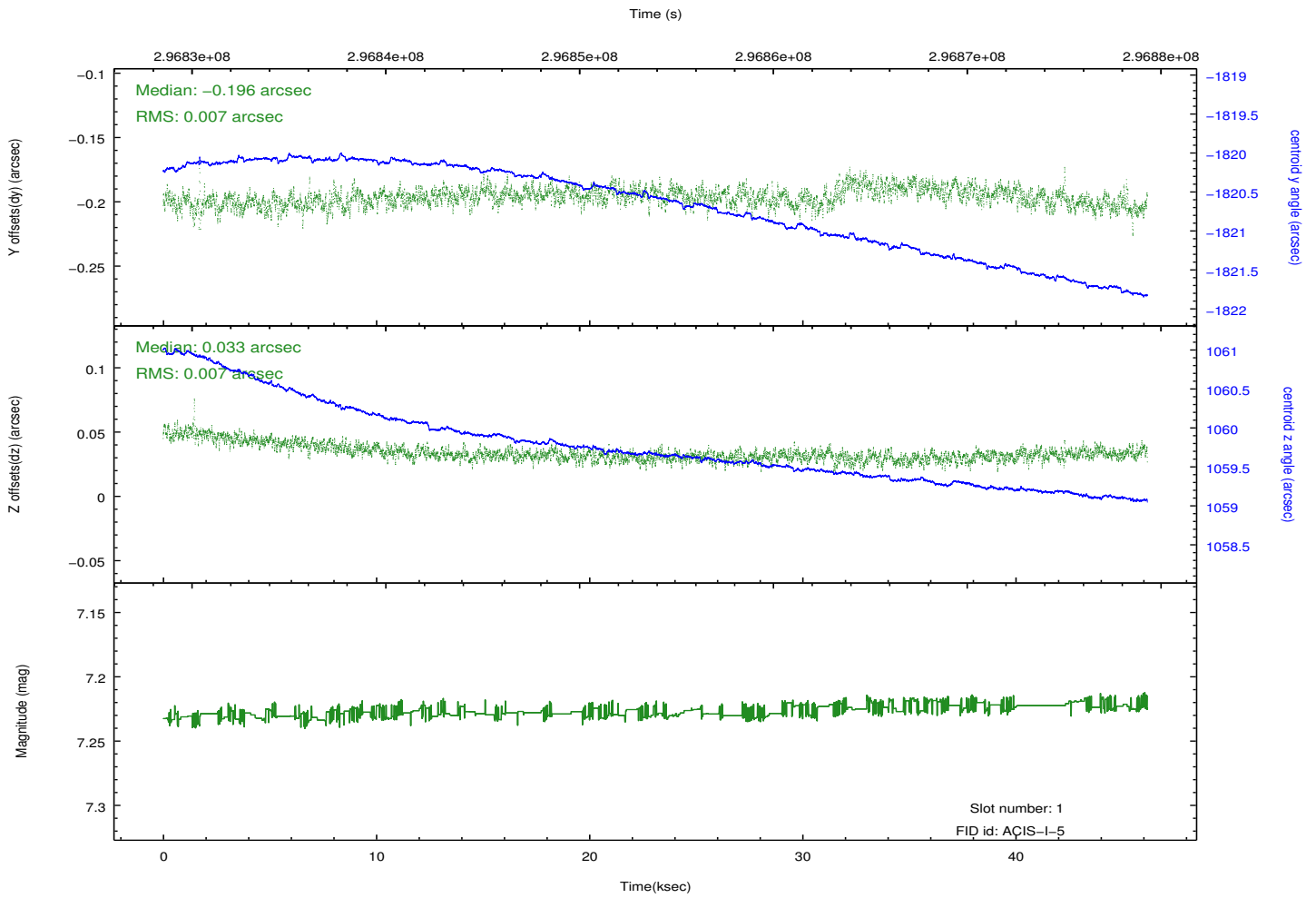
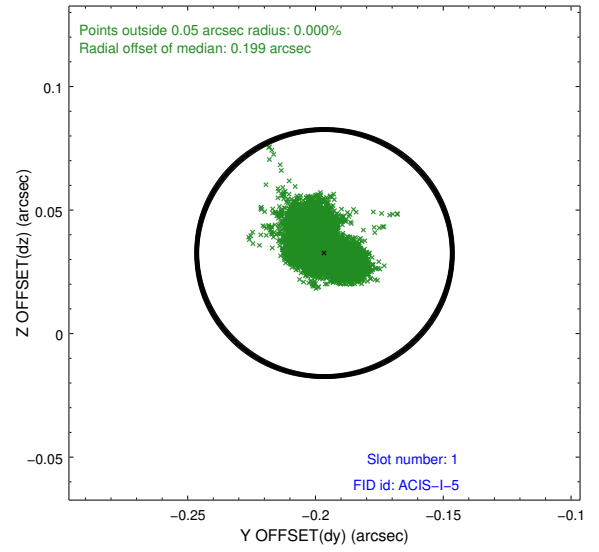
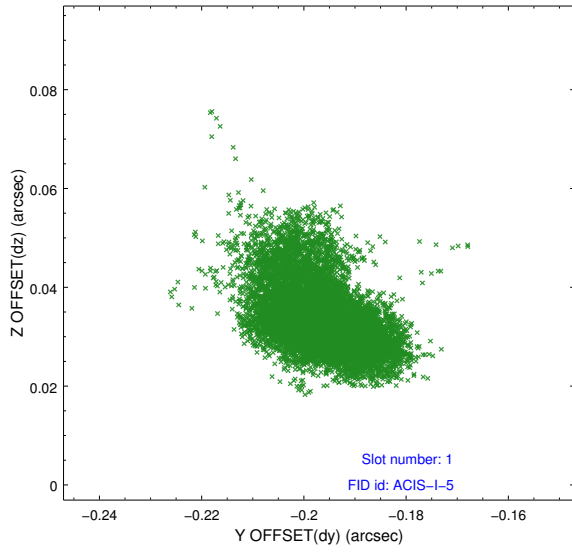


## 2.5 FID Slots

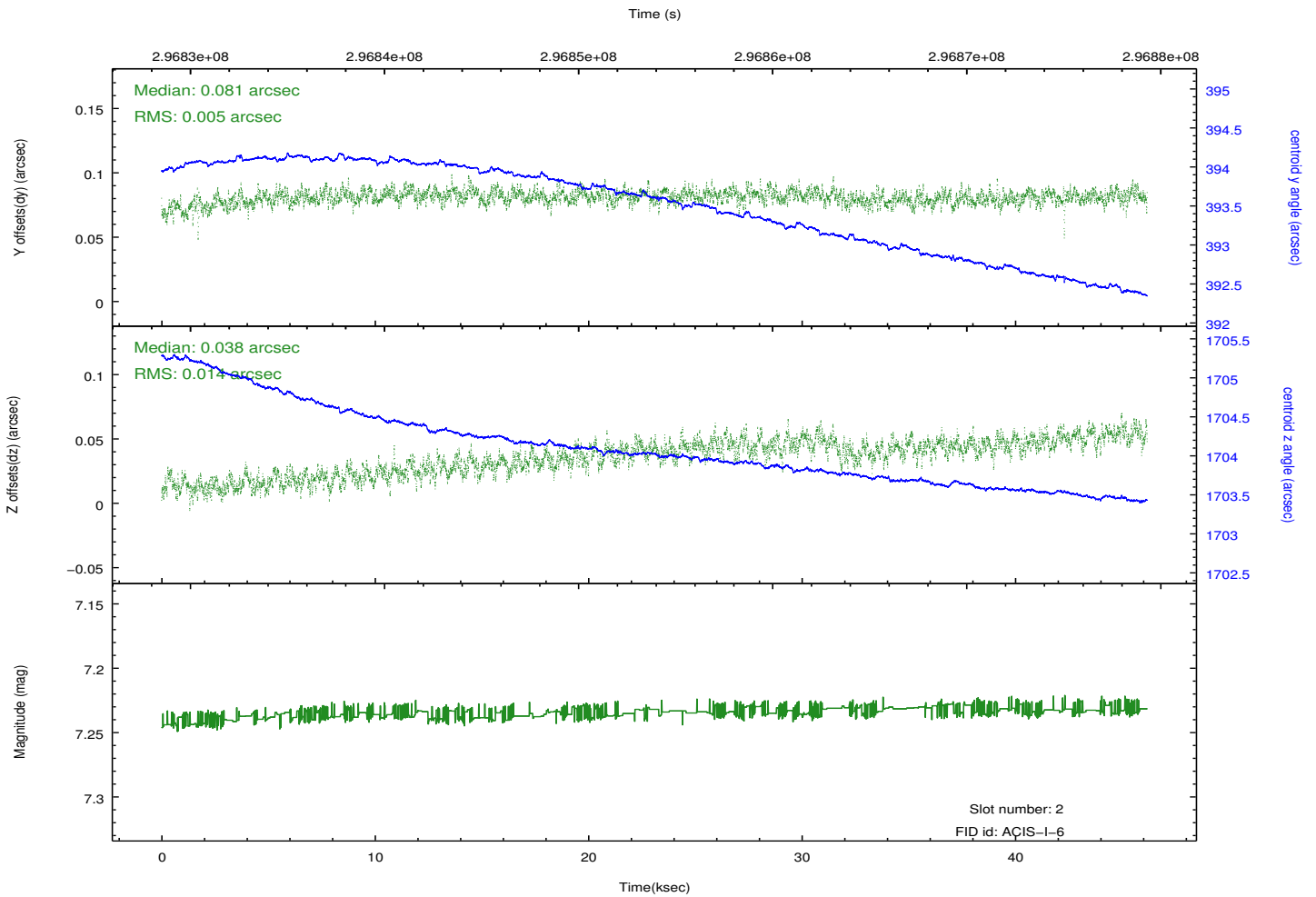
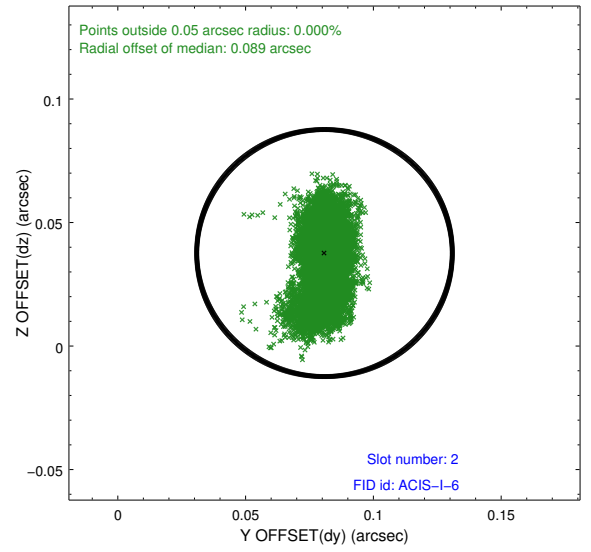
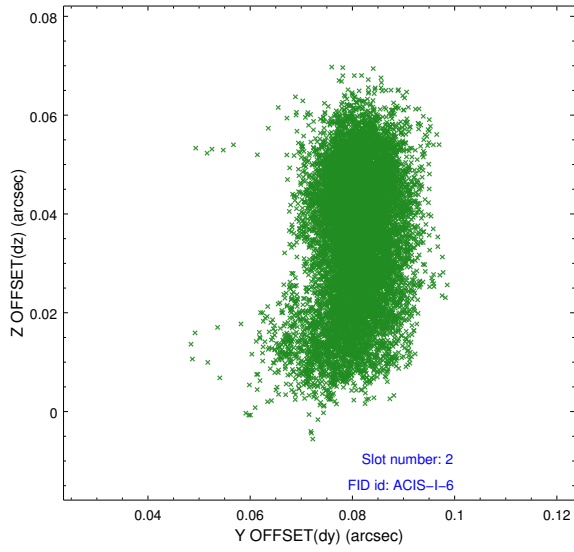
### 2.5.1 Slot 0



## 2.5.2 Slot 1



### 2.5.3 Slot 2



# A Summary

## A.1 Status

V&V Scientist	Joy Nichols
V&V Date (YYYY-MM-DD)	2012.04.26
V&V Edition	1
V&V Disposition and Status	OK
V&V Charge Time	46.0703588

## A.2 Comments