

# V&V Reference Report

## L2 ASCDS Version : 8.4.4

Observation 8260 - L2 Version 2  
Chandra X-Ray Center

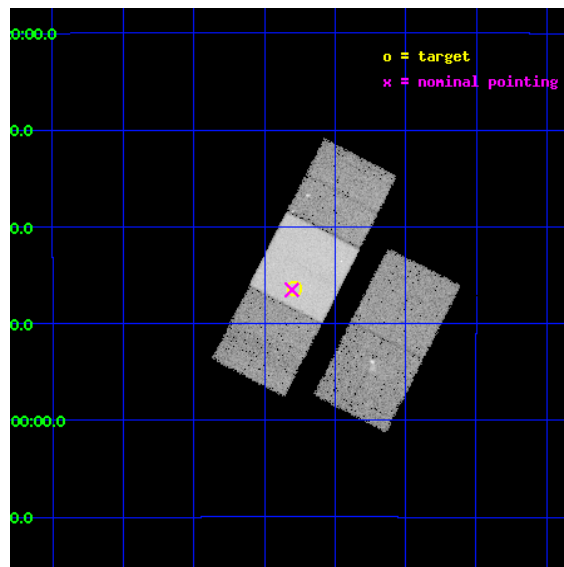
L2 Processing Date : May 3 2012

## Contents

<b>1</b>	<b>Front</b>	<b>2</b>
<b>2</b>	<b>OBI</b>	<b>3</b>
2.1	OBI . . . . .	3
2.1.1	Images . . . . .	3
2.1.2	Bias . . . . .	3
2.1.3	Parameters . . . . .	4
2.1.4	Events . . . . .	4
2.2	Compared Parameters . . . . .	5
2.3	Aspect . . . . .	6
2.4	Star Slots . . . . .	9
2.4.1	Slot 3 . . . . .	9
2.4.2	Slot 4 . . . . .	10
2.4.3	Slot 5 . . . . .	11
2.4.4	Slot 6 . . . . .	12
2.4.5	Slot 7 . . . . .	13
2.5	FID Slots . . . . .	14
2.5.1	Slot 0 . . . . .	14
2.5.2	Slot 1 . . . . .	15
2.5.3	Slot 2 . . . . .	16
<b>A</b>	<b>Summary</b>	<b>17</b>
A.1	Status . . . . .	17
A.2	Comments . . . . .	17

# 1 Front

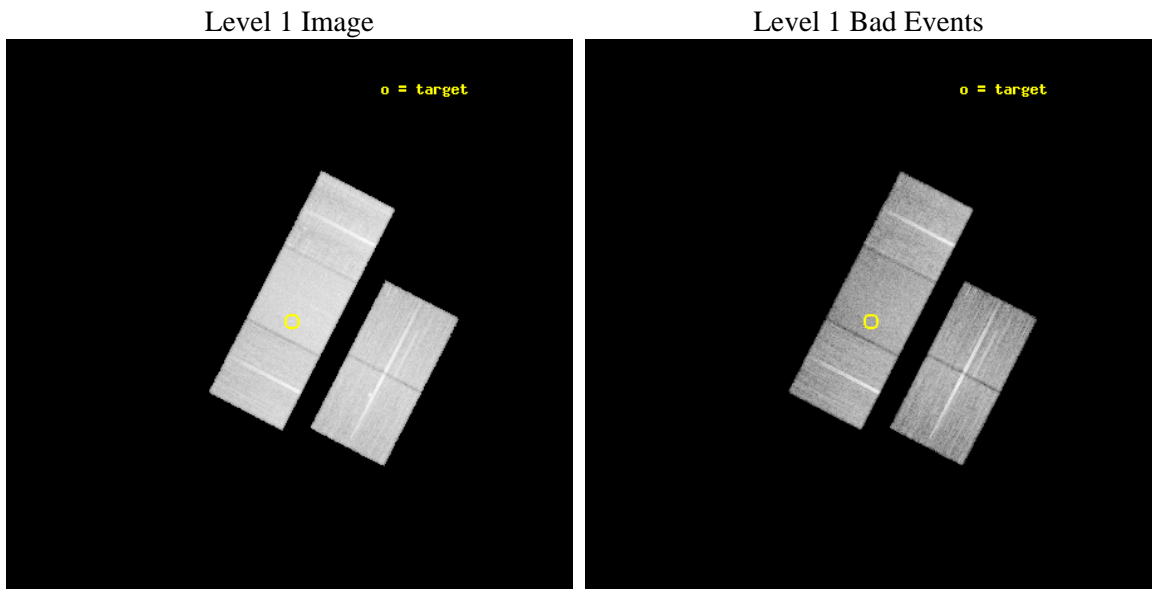
seq_num	701575	Sequence number
obs_id	8260	Observation id
title	A snapshot X-ray/radio survey of AGNs selected from the long menu of SDSS galaxies	Proposal title
observer	Dr. Sebastian Heinz	Principal investigator
object	APMUKS 230535-102920	Source name
dtcycle	0	&#160
cycle	P	events from which exps? Prim/Second/Both
ra_targ	347.072125	Observer's specified target RA [deg]
dec_targ	-9.7729	Observer's specified target Dec [deg]
ra_nom	347.07635275585	Nominal RA [deg]
dec_nom	-9.7753719569968	Nominal Dec [deg]
roll_nom	297.2631528534	Nominal Roll [deg]
revision	2	Processing version of data
ontime	18172.200139761	Sum of GTIs [s]
livetime	17934.766966756	Livetime [s]
ontime2	18172.200139761	Sum of GTIs [s]
ontime3	18172.200139761	Sum of GTIs [s]
ontime6	18172.200139761	Sum of GTIs [s]
ontime7	18172.200139761	Sum of GTIs [s]
ontime8	18169.059159458	Sum of GTIs [s]
l2events	173044	Number of level 2 events



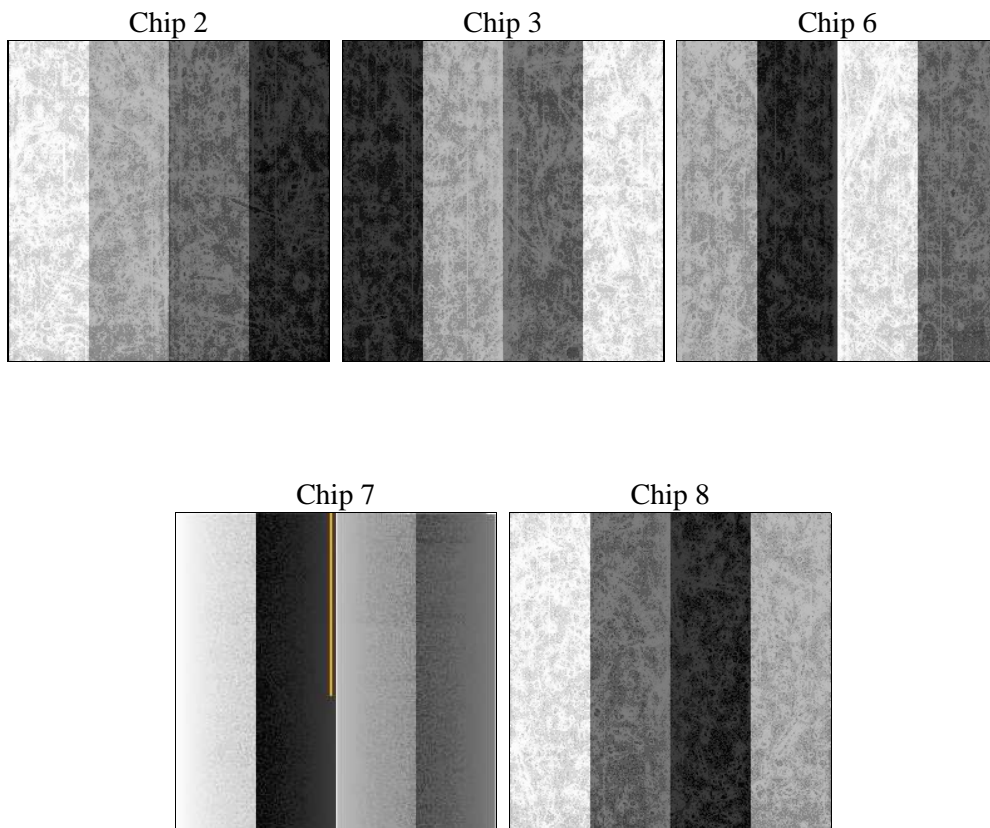
## 2 OBI

### 2.1 OBI

#### 2.1.1 Images



#### 2.1.2 Bias



### 2.1.3 Parameters

obi_num	0	Obi number	sched_exp_time	18000.729000	[s] Scheduled observation exposure time
ascdsver	8.4.4	Processing system revision	ontime	18172.200139761	Sum of GTIs [s]
caldbver	4.4.9	&#160	ontime2	18172.200139761	Sum of GTIs [s]
date	2012-05-03T12:34:28	Date and time of file creation	ontime3	18172.200139761	Sum of GTIs [s]
revision	2	Processing version of data	ontime6	18172.200139761	Sum of GTIs [s]
			ontime7	18172.200139761	Sum of GTIs [s]
			ontime8	18169.059159458	Sum of GTIs [s]
			l1events	1013325	Number of level 1 events

### 2.1.4 Events

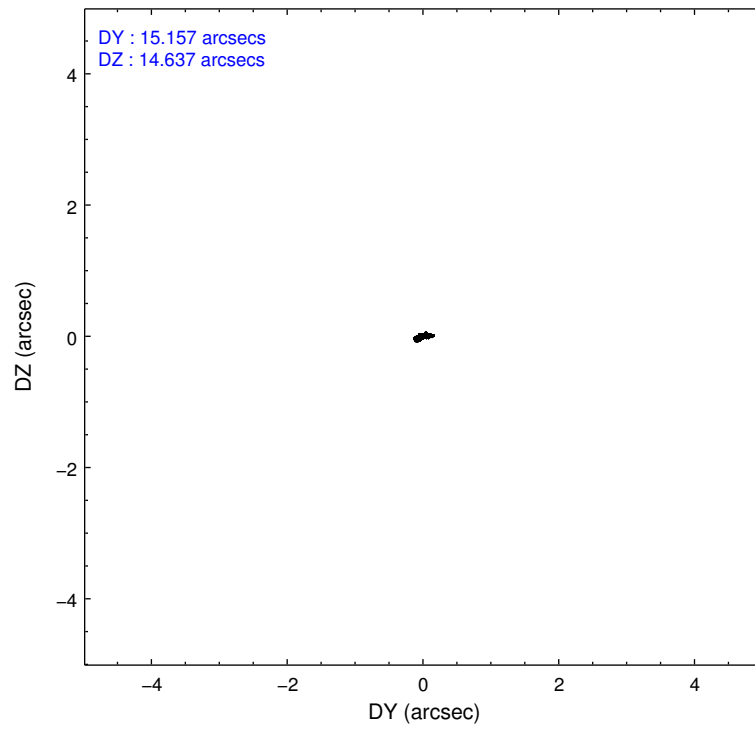
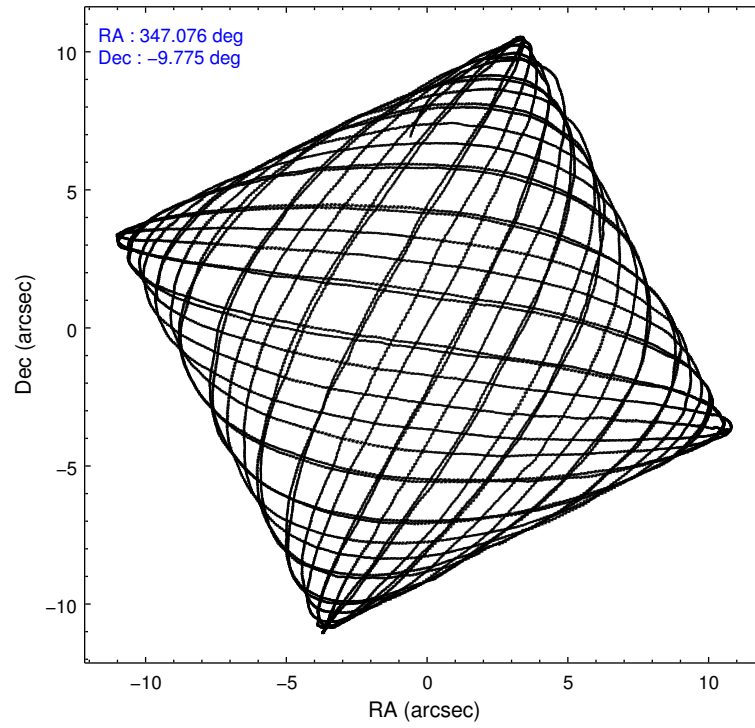
	ccd 2	ccd 3	ccd 6	ccd 7	ccd 8
level 1 events	179809	171691	185072	246816	229937
rejected events	158310	151539	163864	147735	178887
rejected %	88%	88%	88%	59%	77%

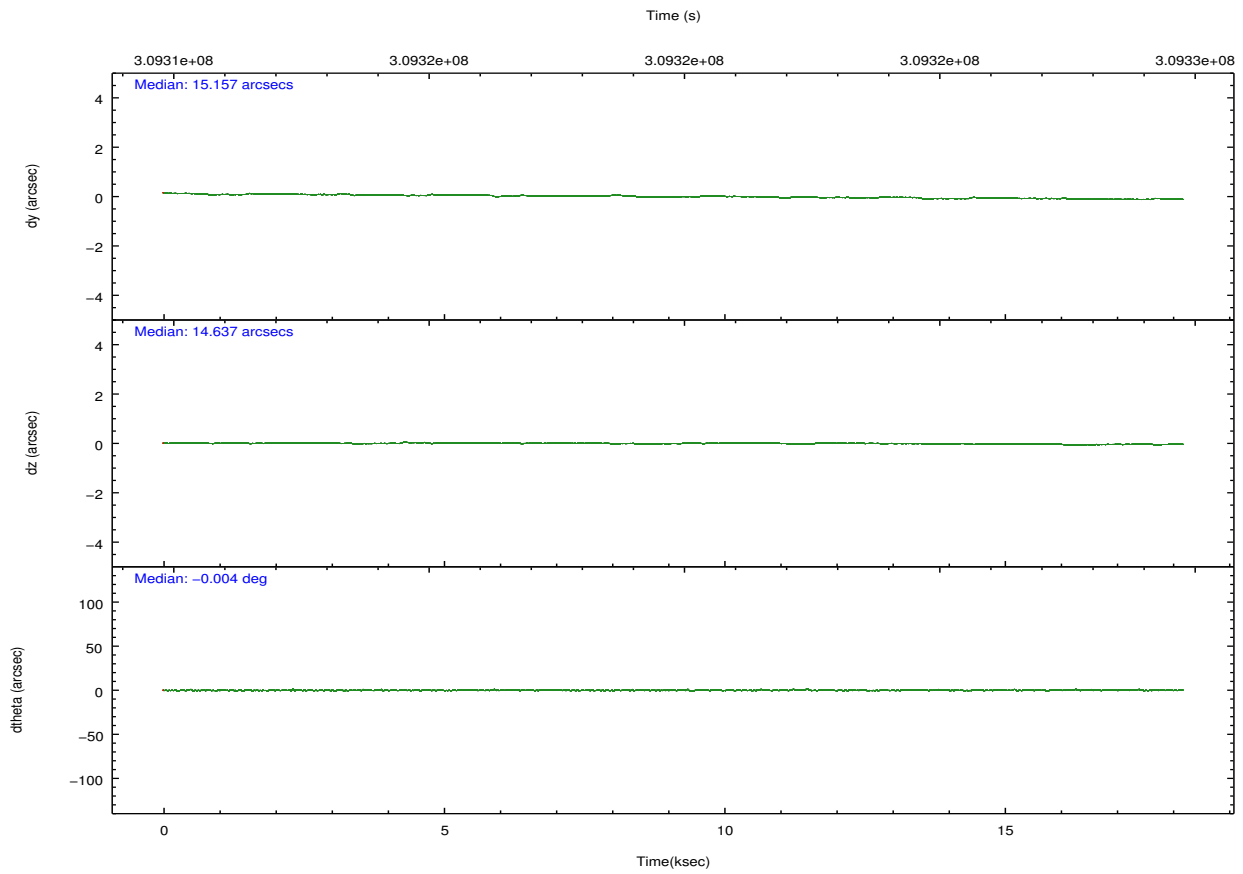
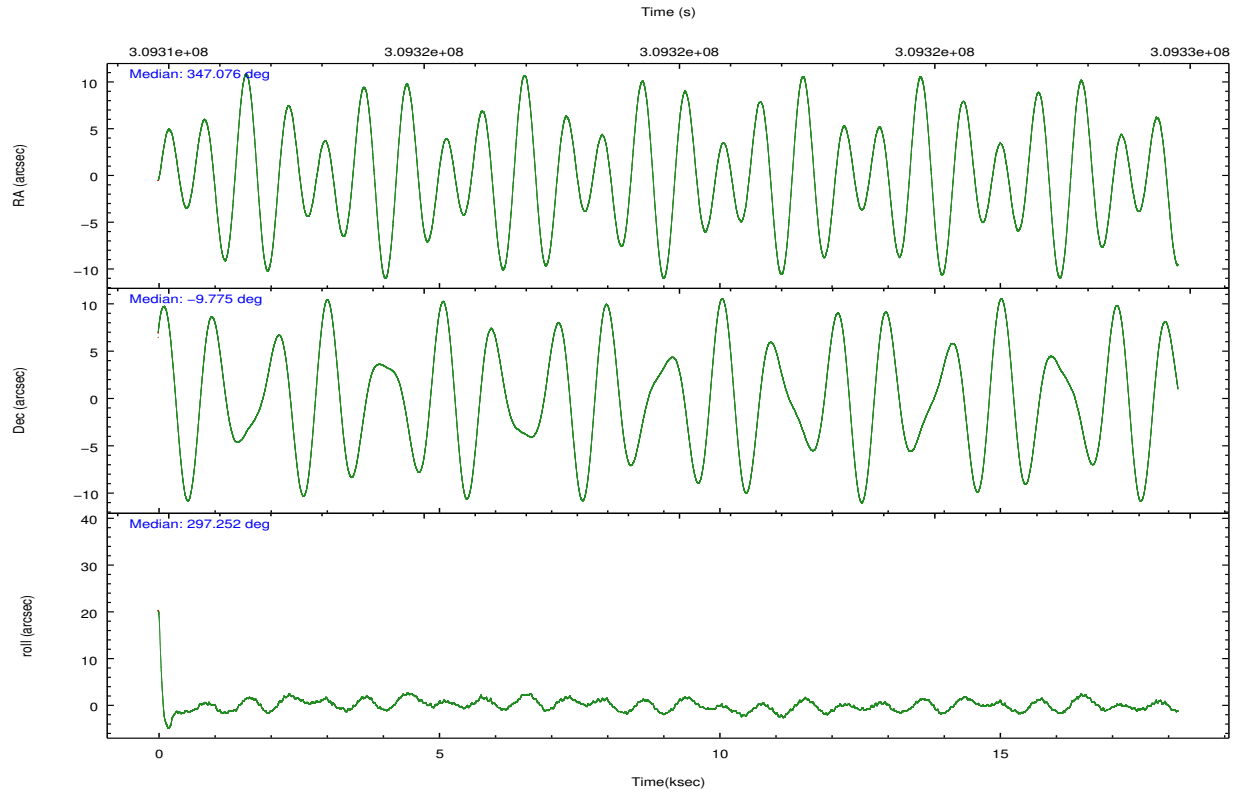
	ccd 2	ccd 3	ccd 6	ccd 7	ccd 8
grade 0 events	10225	9002	8401	8542	16358
	5%	5%	4%	3%	7%
grade 1 events	98	130	75	246	179
	0%	0%	0%	0%	0%
grade 2 events	4492	4118	4896	20473	11637
	2%	2%	2%	8%	5%
grade 3 events	1950	1928	2036	8240	5538
	1%	1%	1%	3%	2%
grade 4 events	2008	1962	2064	8491	5187
	1%	1%	1%	3%	2%
grade 5 events	6733	8220	8503	22912	11328
	3%	4%	4%	9%	4%
grade 6 events	3459	3712	4404	56093	13632
	1%	2%	2%	22%	5%
grade 7 events	150844	142619	154693	121819	166078
	83%	83%	83%	49%	72%

## 2.2 Compared Parameters

Parameter	Planned	Actual	Parameter	Planned	Actual
Instrument	ACIS	ACIS	Obspar format version number	7	7
Detector	ACIS-23678	ACIS-23678	Obspar file type	PREDICTED	ACTUAL
Grating	NONE	NONE	Obspar update status	NONE	UPDATED
Data mode	VFAINT	VFAINT	CCD I0 on	N	N
Observation mode	POINTING	POINTING	CCD I1 on	N	N
[deg] Pointing RA	347.052801	347.0763527558486	CCD I2 on	O1	Y
[deg] Pointing Dec	-9.760927	-9.775371956996807	CCD I3 on	O2	Y
[deg] Pointing Roll	297.102514	297.2631528534002	CCD S0 on	N	N
[mm] SIM focus pos	-0.684267	-0.6828225247311905	CCD S1 on	N	N
[mm] SIM defocus	0	0.001444936568705701	CCD S2 on	O4	Y
[mm] SIM translation stage pos	-190.132523	-190.145094680475	CCD S3 on	Y	Y
[mm] SIM translation stage offset	0	0.01257209746719923	CCD S4 on	O3	Y
[s] Observation start time (MET)	309310854.184000	309309607.12722	CCD S5 on	N	N
Observation start date	2007-10-20T23:39:49	2007-10-20T23:20:07	Number of optional ACIS chips dropped	0	0
[s] Observation end time (MET)	309328855.184000	309329080.07816	On-chip summing requested	N	N
Observation end date	2007-10-21T04:39:50	2007-10-21T04:44:40	Subarray requested	NONE	NONE
Read mode	TIMED	TIMED	Alternating exposures requested	N	N
			[s] Primary exposure time	0.000000	3.1

## 2.3 Aspect



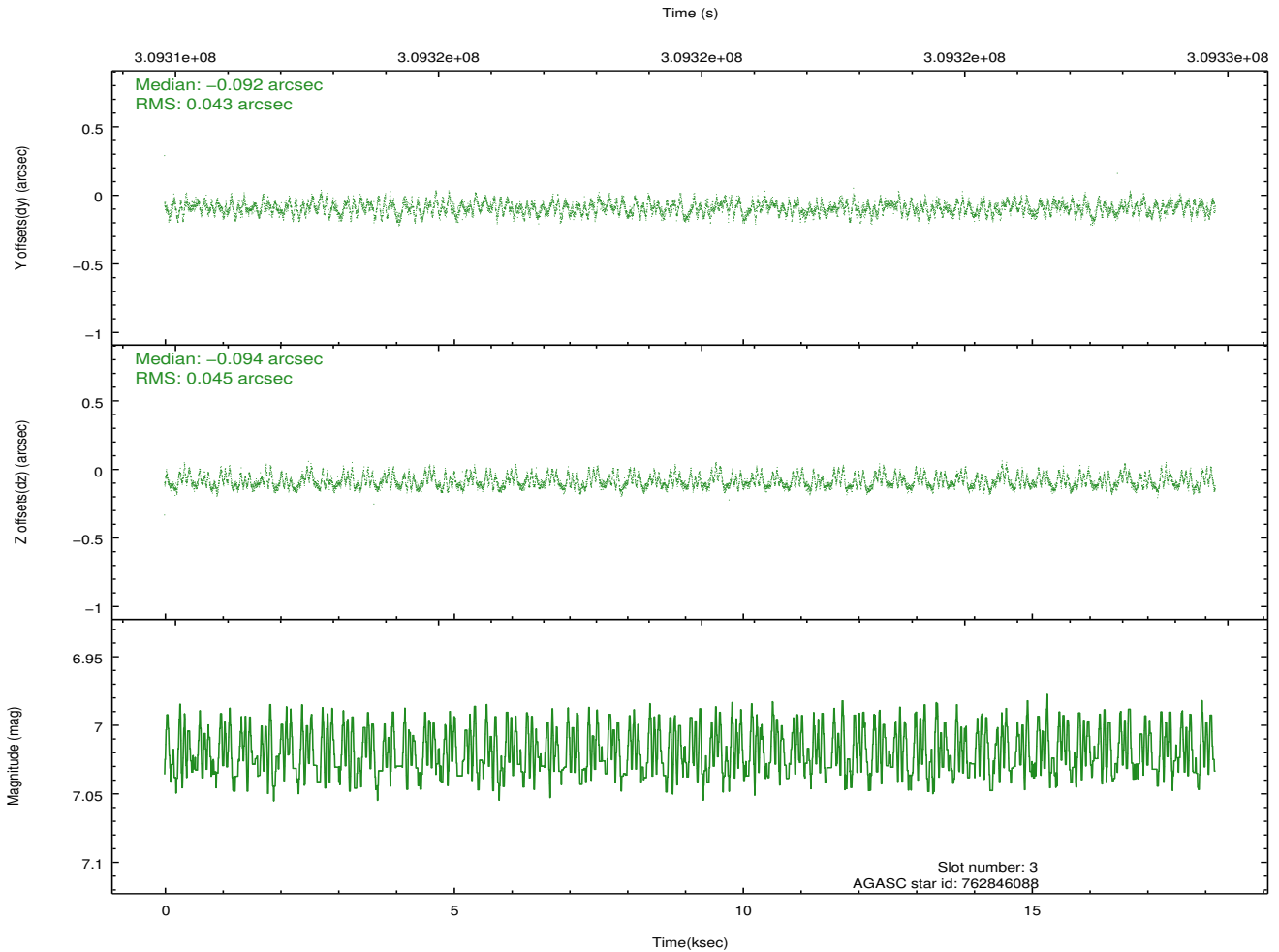
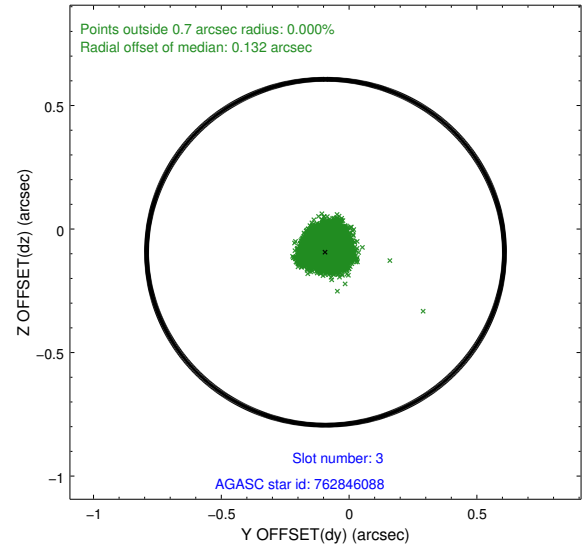
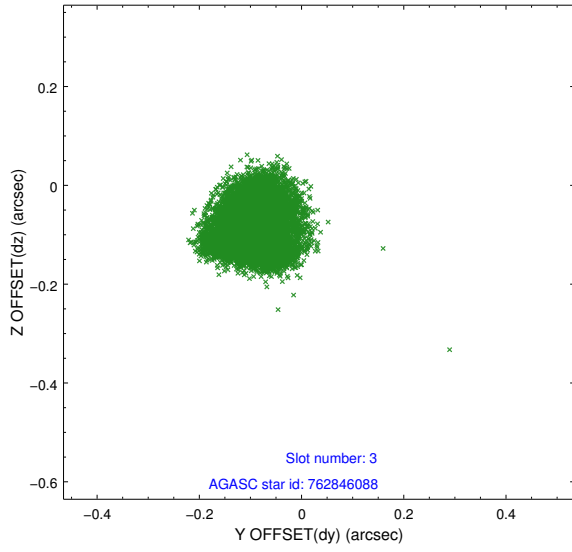


### Slot Statistics

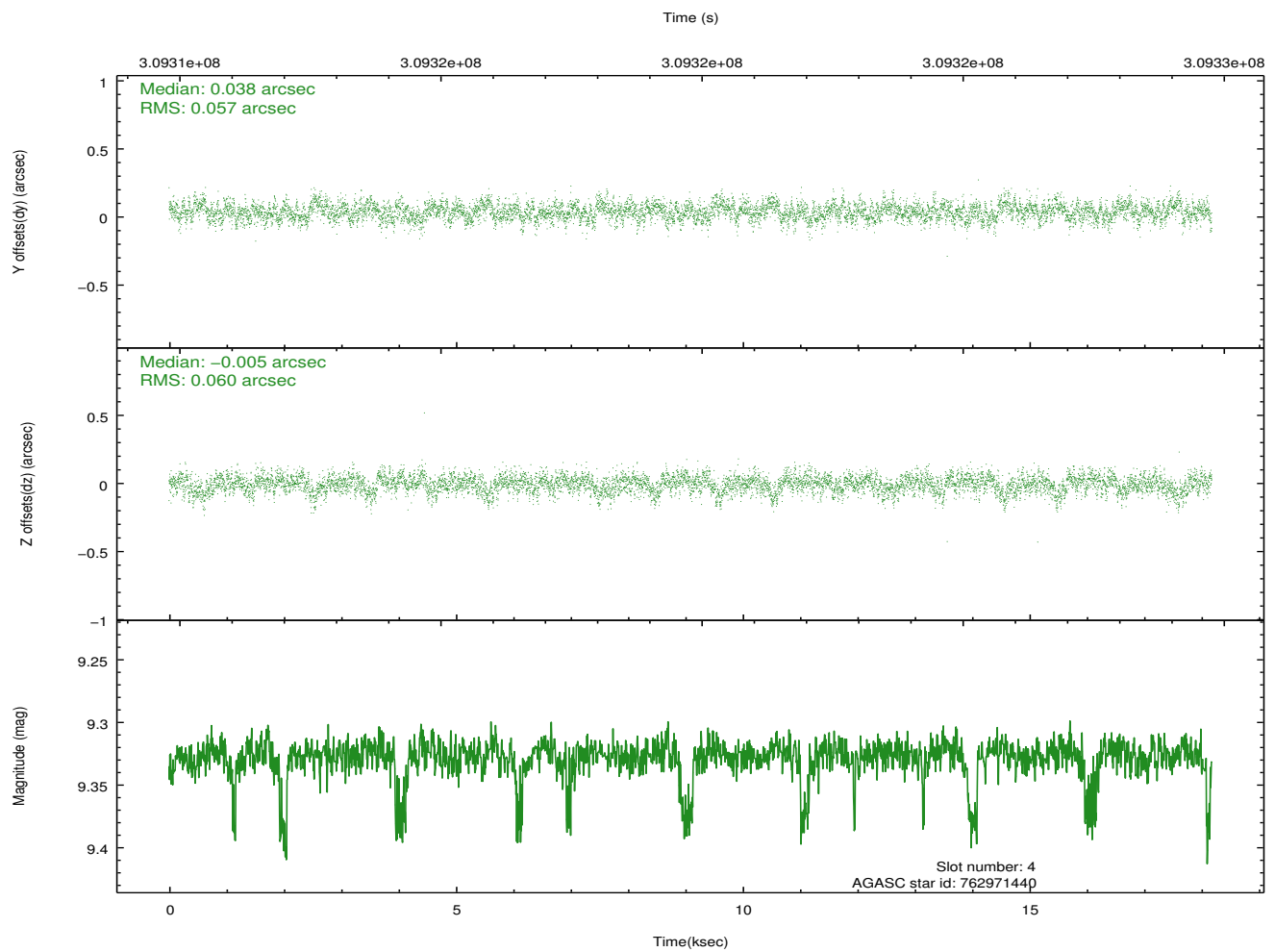
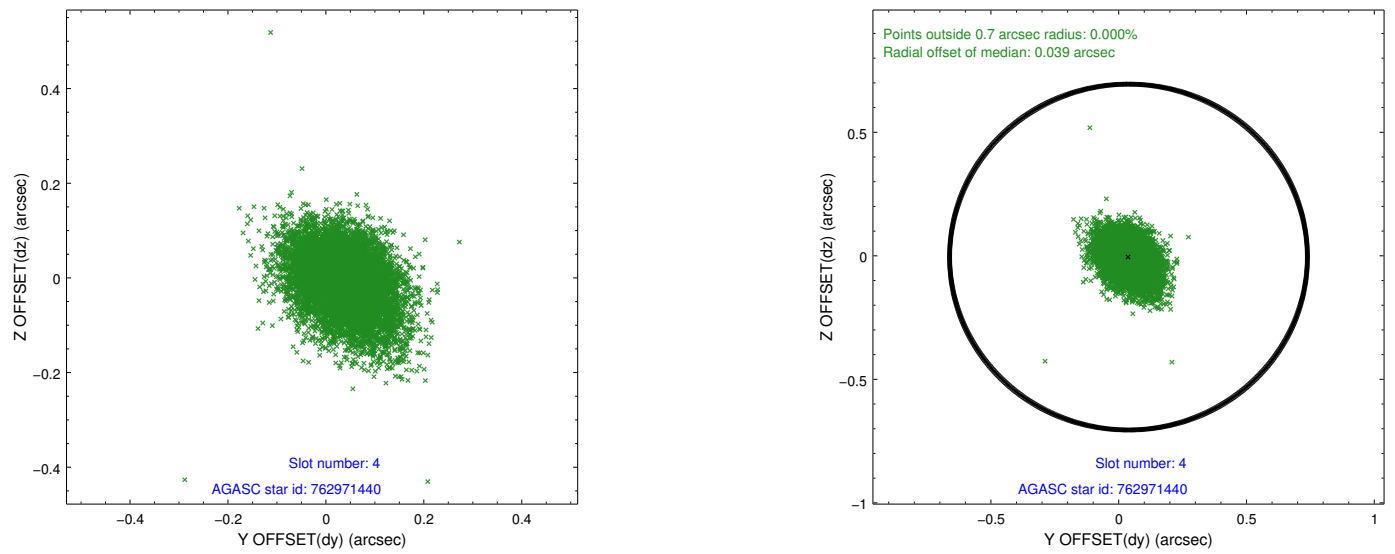
slot	status	id	mag	n_pts	med_dy	med_dz	dr1	dr2	ra	dec	mean_y	mean_z
0	FID	ACIS-S-2	7.09	4434	-0.097	-0.035	0.006	0.010	0.000000	0.000000	-768.23	-1735.93
1	FID	ACIS-S-4	7.19	4434	0.197	0.056	0.006	0.010	0.000000	0.000000	2145.24	172.41
2	FID	ACIS-S-5	7.22	4434	-0.131	-0.012	0.007	0.012	0.000000	0.000000	-1820.82	166.26
3	GUIDE	762846088	7.02	8868	-0.092	-0.094	0.068	0.103	346.571751	-9.606140	-1271.70	-1266.13
4	GUIDE	762971440	9.33	8867	0.038	-0.005	0.086	0.146	347.328862	-9.187234	-1390.91	1814.89
5	GUIDE	762842032	9.19	8860	0.059	0.147	0.096	0.152	346.257812	-9.583289	-1851.48	-2221.91
6	GUIDE	762846856	8.45	8867	0.114	-0.056	0.079	0.124	346.925447	-9.667235	-505.72	-248.90
7	GUIDE	762843864	8.09	8868	-0.119	0.009	0.065	0.112	347.111363	-9.009728	-2312.53	1417.25

## 2.4 Star Slots

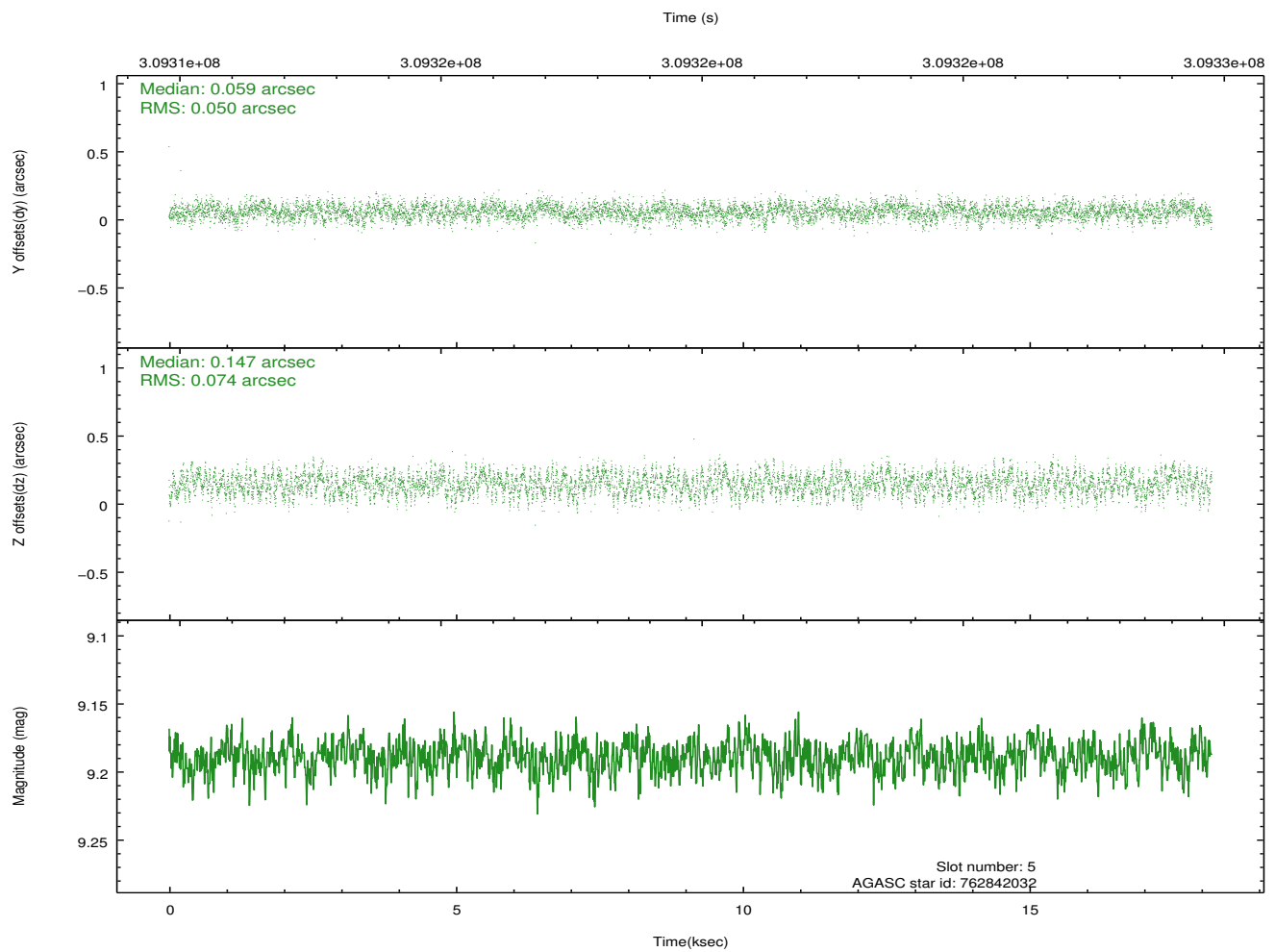
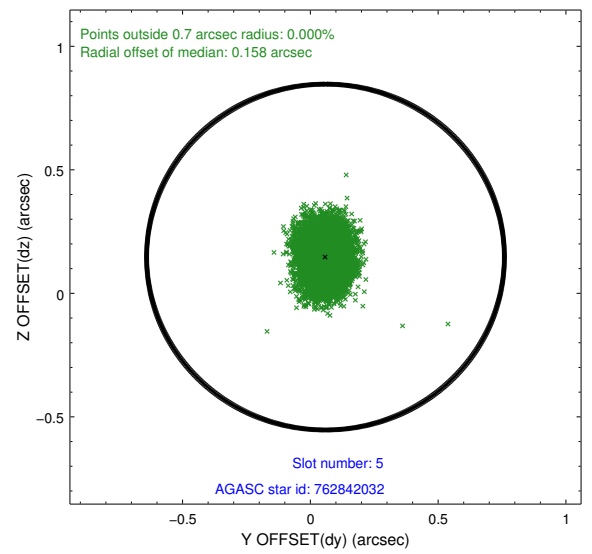
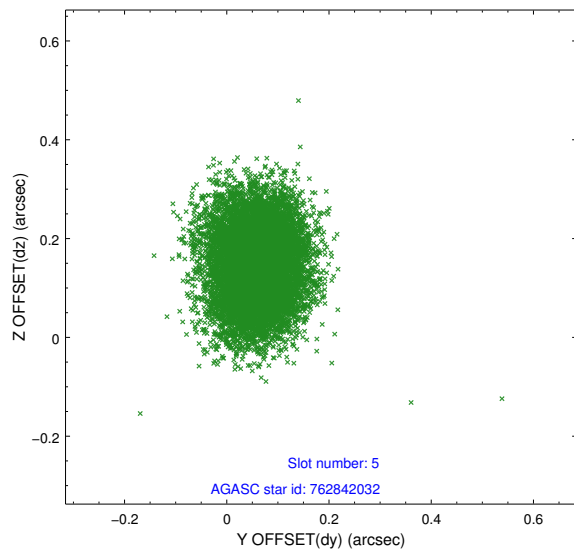
### 2.4.1 Slot 3



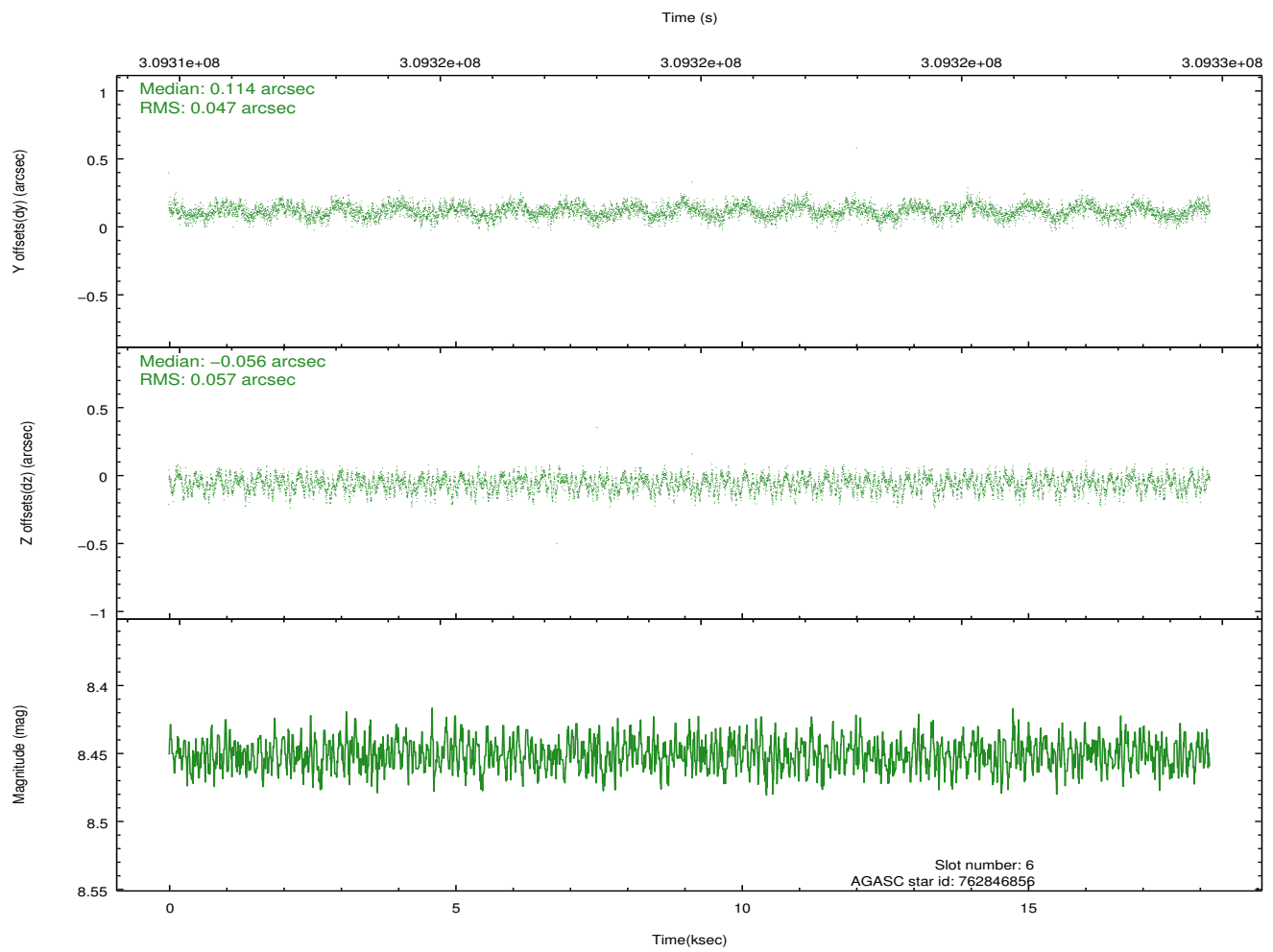
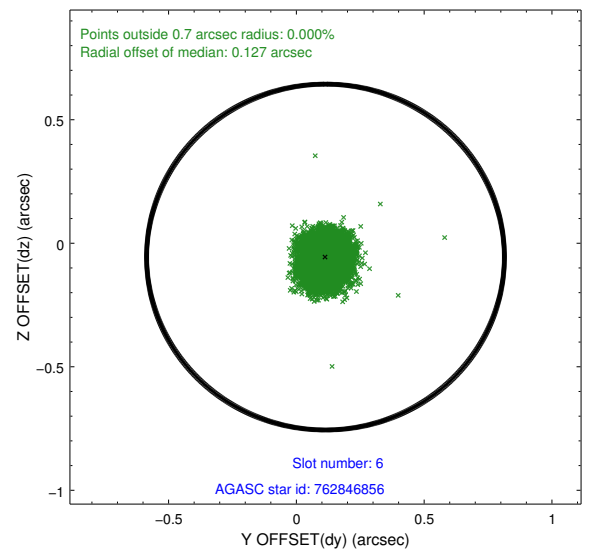
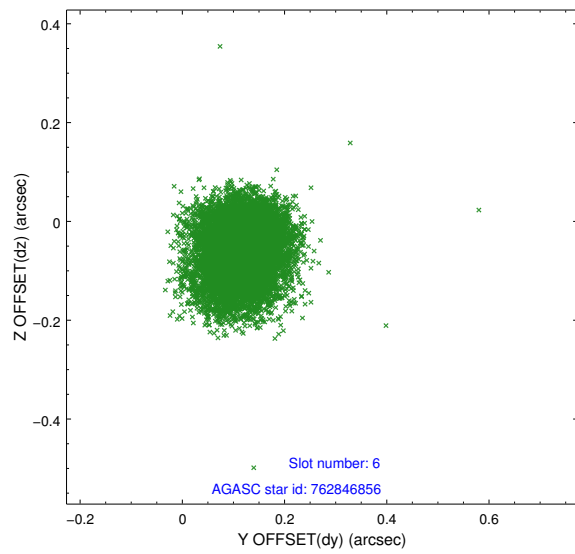
## 2.4.2 Slot 4



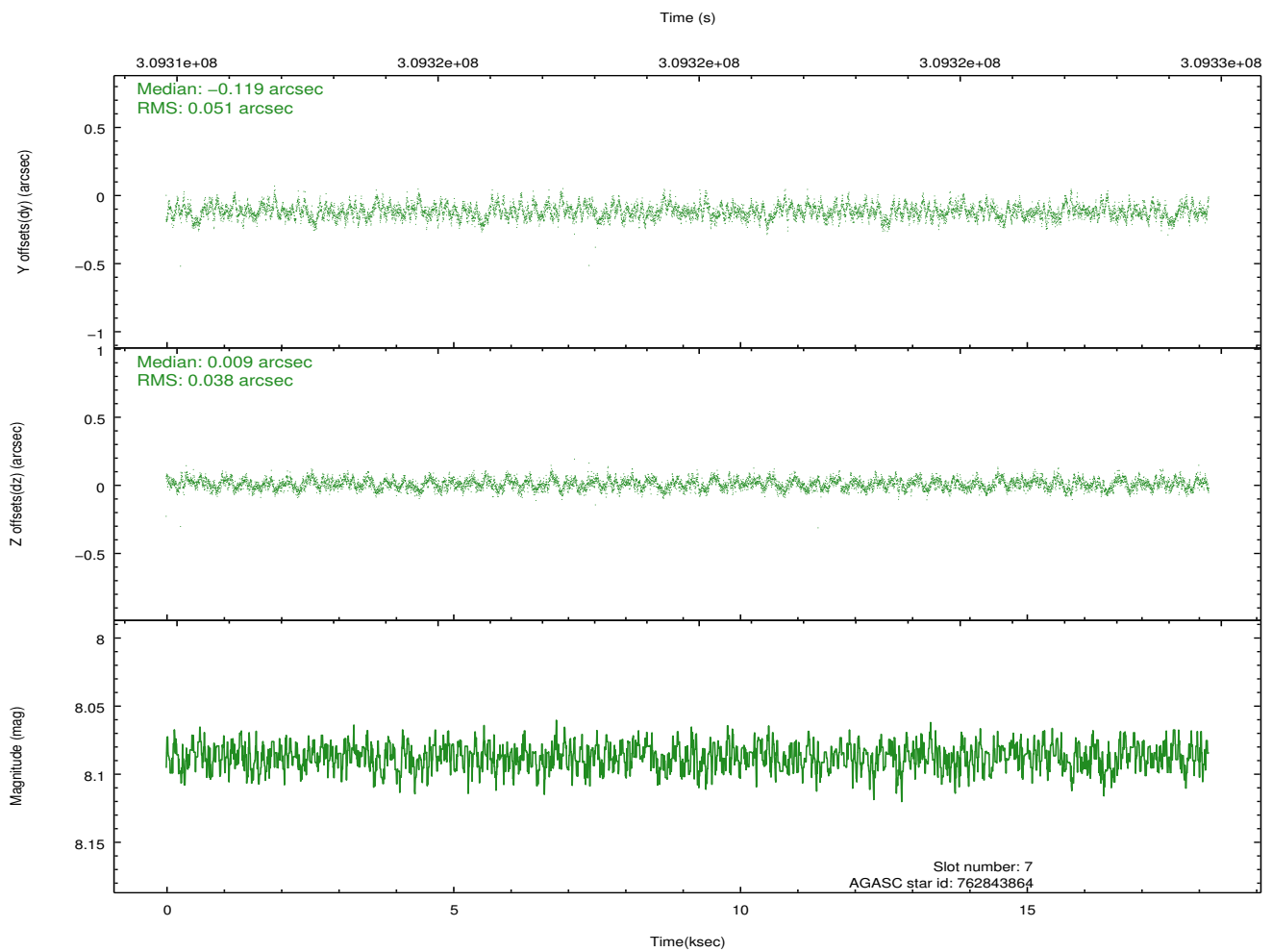
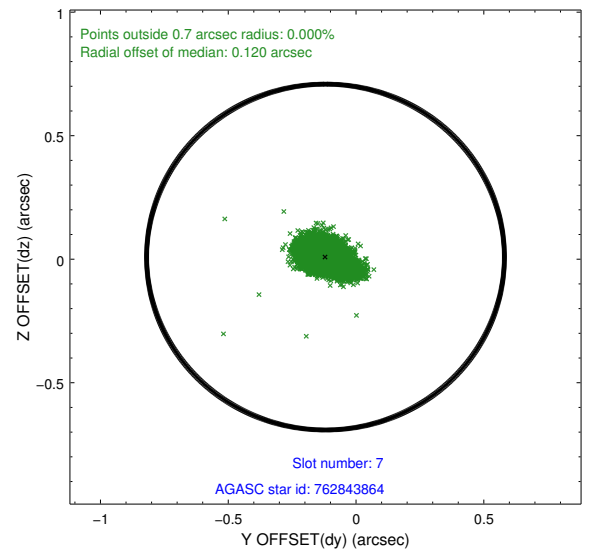
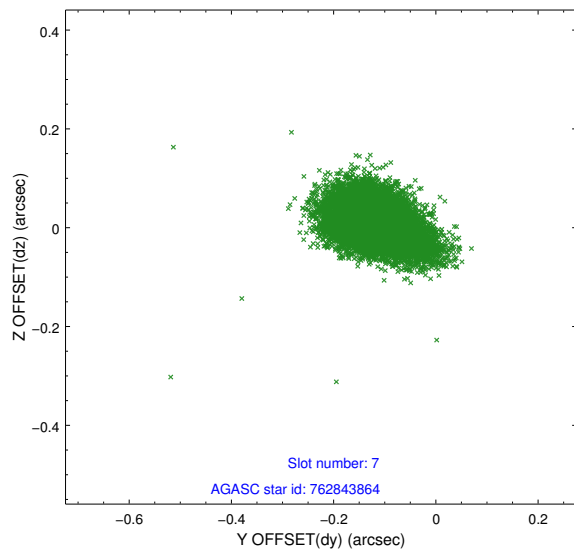
### 2.4.3 Slot 5



## 2.4.4 Slot 6

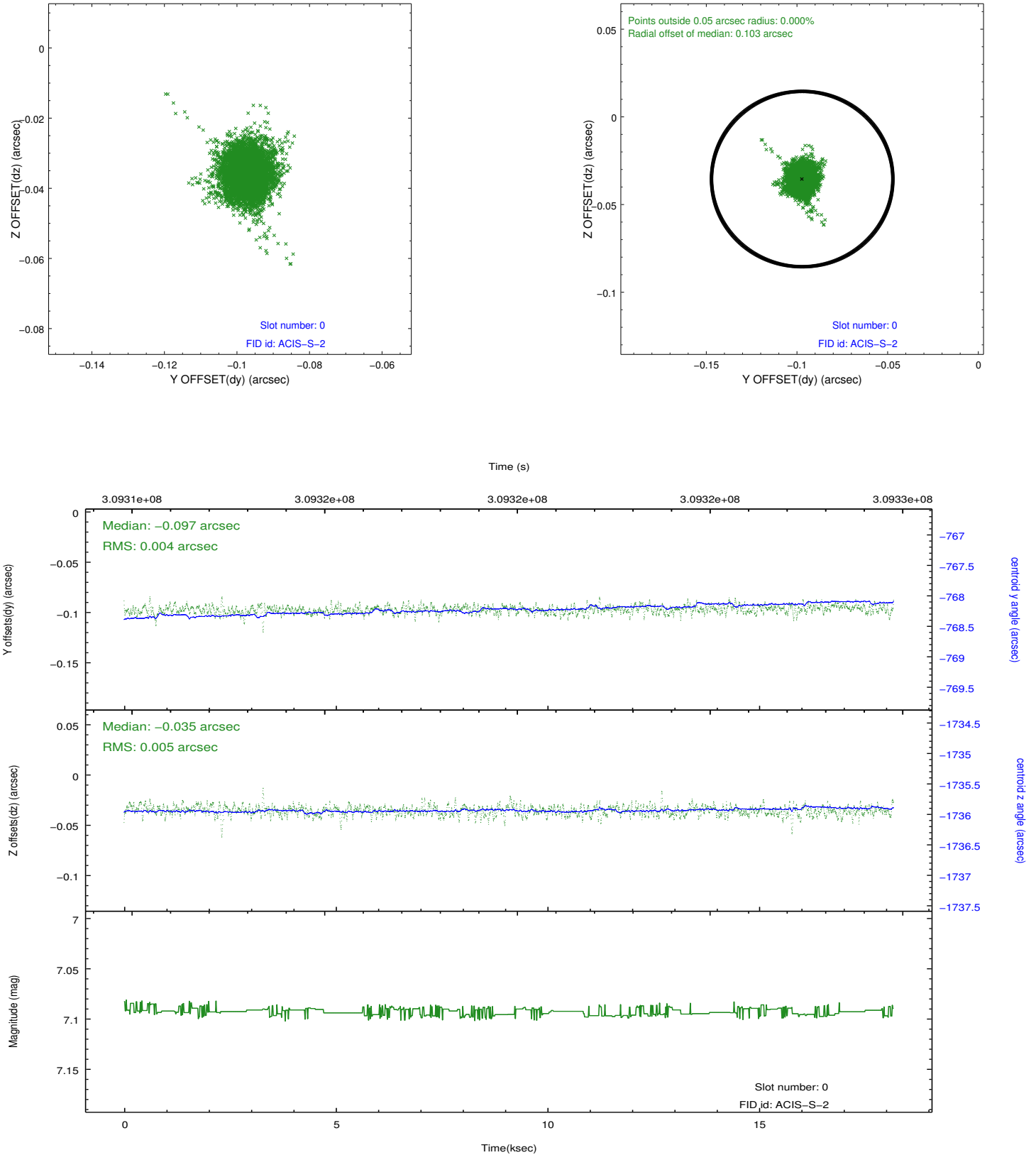


## 2.4.5 Slot 7

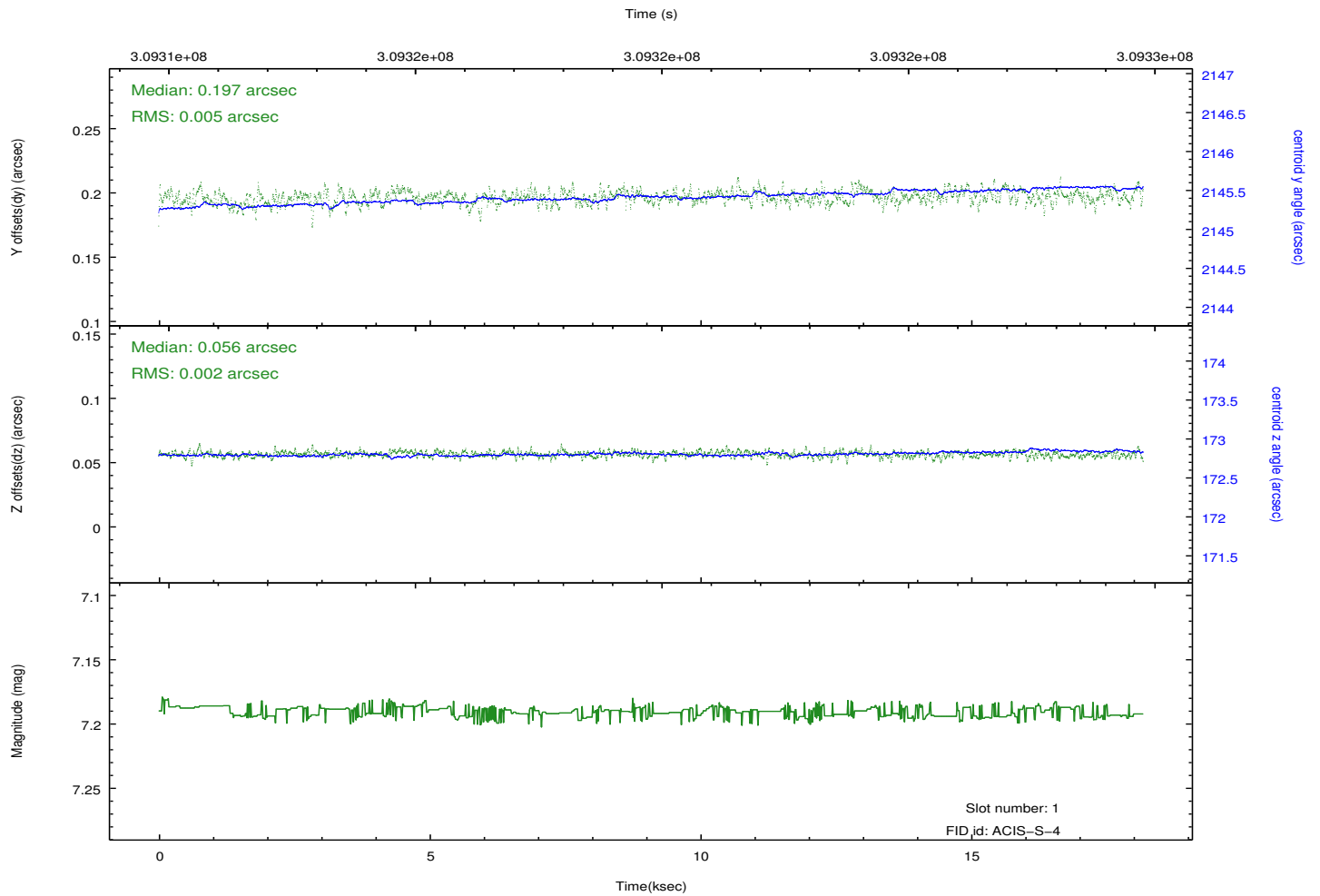
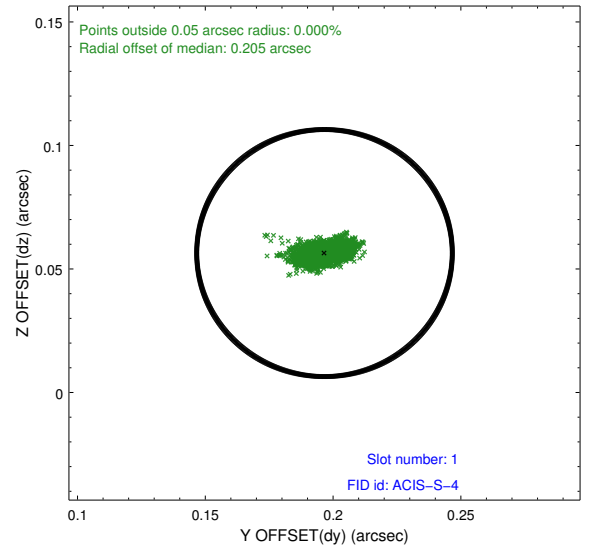
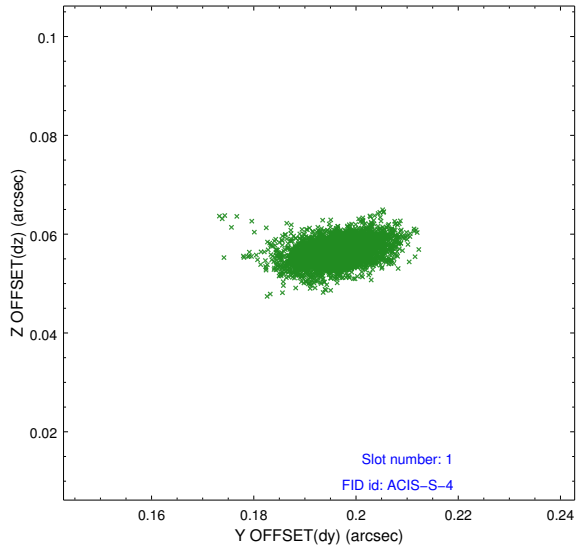


## 2.5 FID Slots

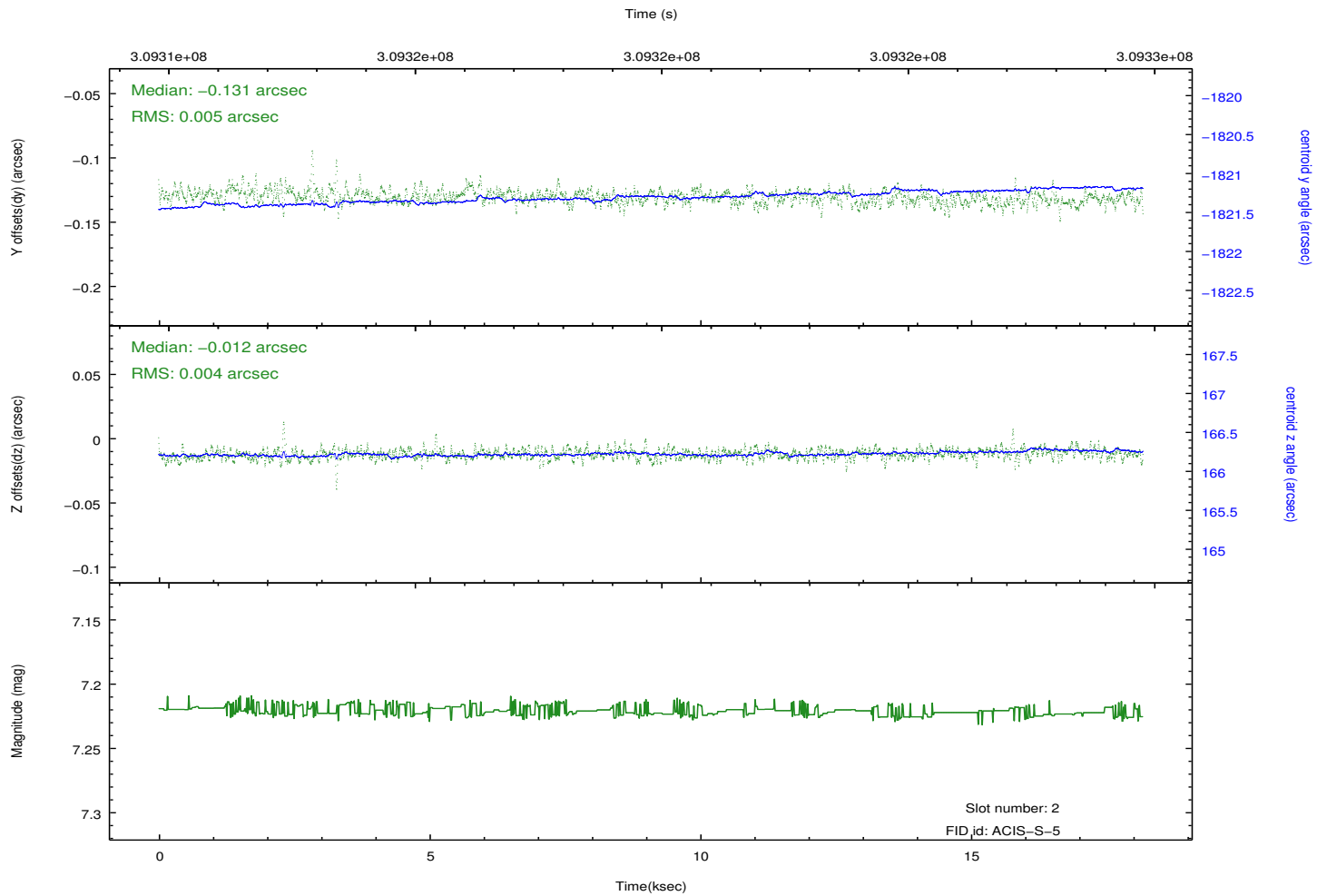
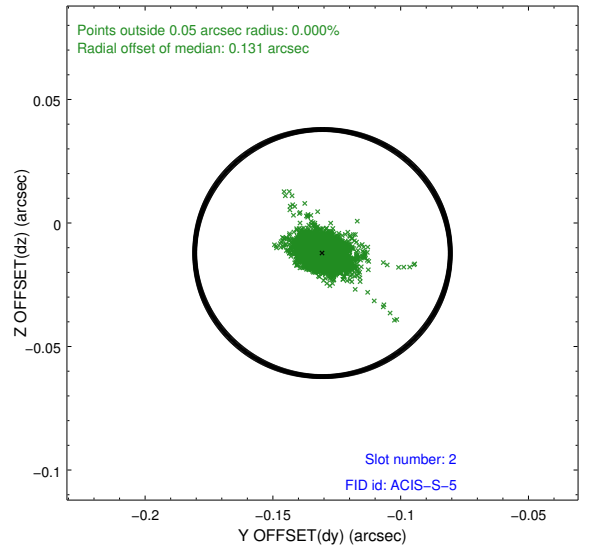
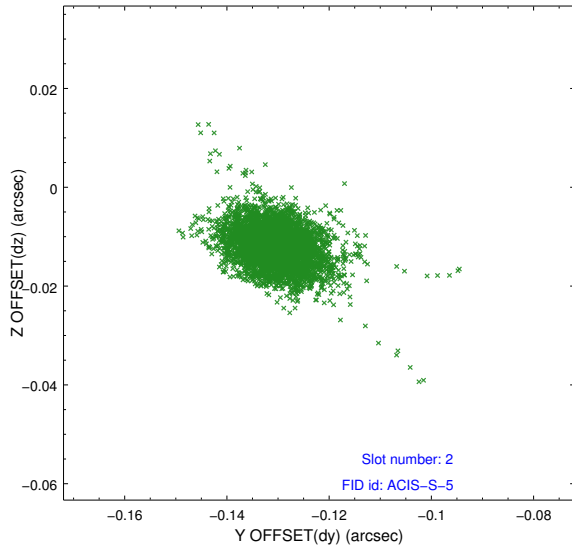
### 2.5.1 Slot 0



## 2.5.2 Slot 1



### 2.5.3 Slot 2



# A Summary

## A.1 Status

V&V Scientist	Jen Lauer
V&V Date (YYYY-MM-DD)	2012.05.04
V&V Edition	1
V&V Disposition and Status	OK
V&V Charge Time	18.1722001

## A.2 Comments

Joint proposal with VLA.