

V&V Reference Report

L2 ASCDS Version : 8.4.3.1

Observation 8460 - L2 Version 2
Chandra X-Ray Center

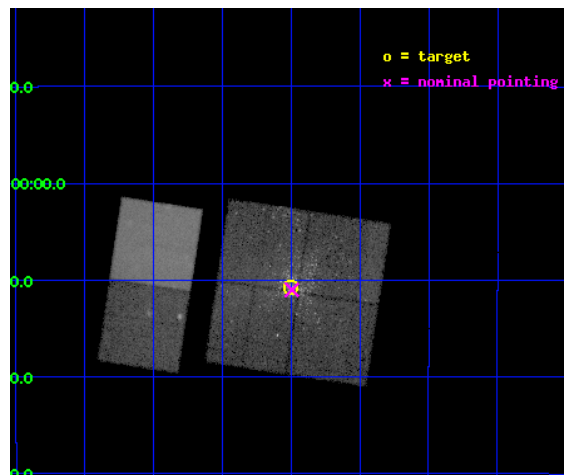
L2 Processing Date : Apr 13 2012

Contents

1	Front	2
2	OBI	3
2.1	OBI	3
2.1.1	Images	3
2.1.2	Bias	3
2.1.3	Parameters	4
2.1.4	Events	4
2.2	Compared Parameters	5
2.3	Aspect	6
2.4	Star Slots	9
2.4.1	Slot 3	9
2.4.2	Slot 4	10
2.4.3	Slot 5	11
2.4.4	Slot 6	12
2.4.5	Slot 7	13
2.5	FID Slots	14
2.5.1	Slot 0	14
2.5.2	Slot 1	15
2.5.3	Slot 2	16
A	Summary	17
A.1	Status	17
A.2	Comments	17

1 Front

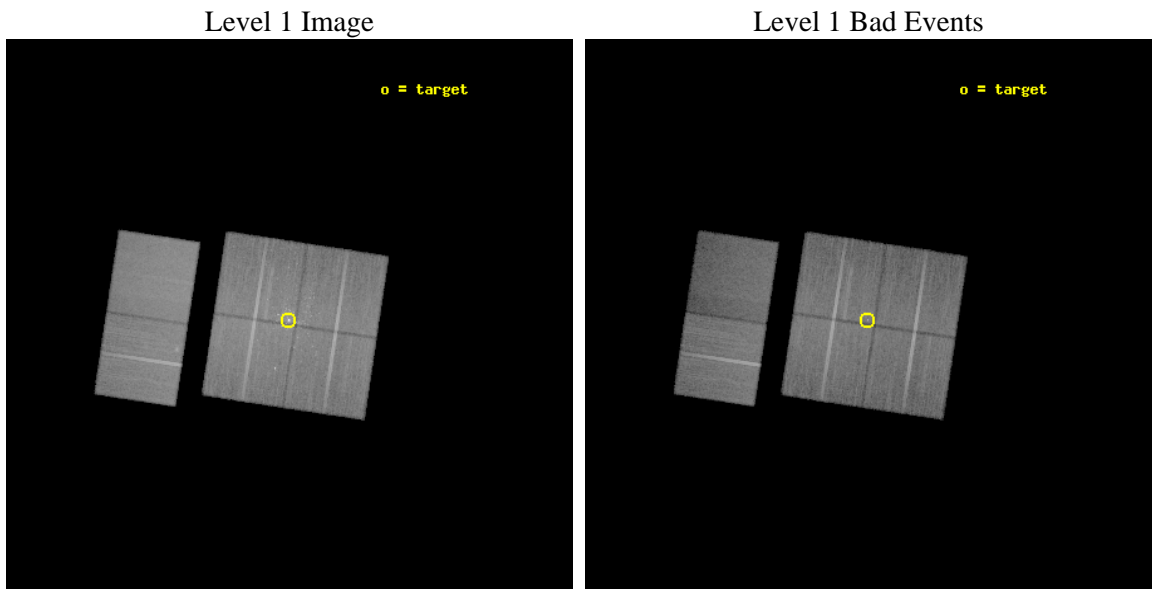
seq_num	200380	Sequence number
obs_id	8460	Observation id
title	A Long Look at M17: Tapping the Treasury of a Nearby Rich Star Forming Region	Proposal title
observer	Professor Gordon Garmire	Principal investigator
object	M17	Source name
dtcycle	0	
cycle	P	events from which exps? Prim/Second/Both
ra_targ	275.124583	Observer's specified target RA [deg]
dec_targ	-16.179139	Observer's specified target Dec [deg]
ra_nom	275.12339519519	Nominal RA [deg]
dec_nom	-16.183651069686	Nominal Dec [deg]
roll_nom	278.60836255092	Nominal Roll [deg]
revision	2	Processing version of data
ontime	30143.958897591	Sum of GTIs [s]
livetime	29762.257939516	Livetime [s]
ontime0	30143.958927393	Sum of GTIs [s]
ontime1	30143.958897591	Sum of GTIs [s]
ontime2	30143.958897531	Sum of GTIs [s]
ontime3	30143.958897591	Sum of GTIs [s]
ontime6	30147.199887753	Sum of GTIs [s]
ontime7	30147.199887753	Sum of GTIs [s]
l2events	268634	Number of level 2 events



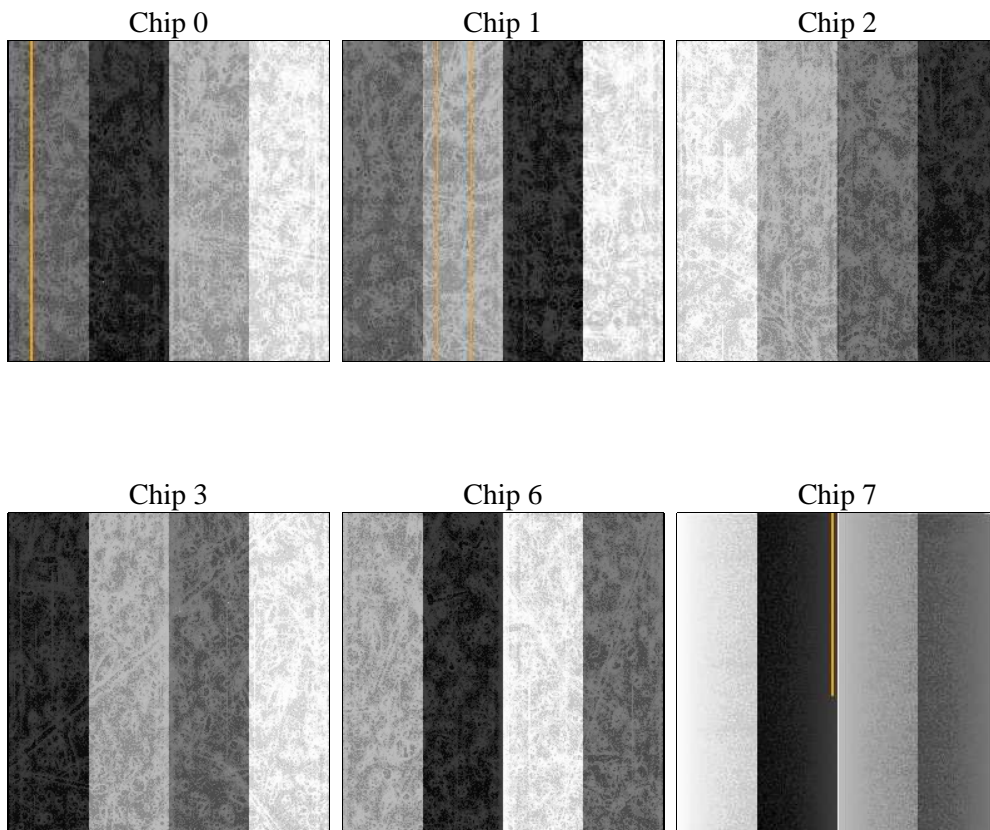
2 OBI

2.1 OBI

2.1.1 Images



2.1.2 Bias



2.1.3 Parameters

obi_num	0	Obi number	sched_exp_time	30000.000000	[s] Scheduled observation exposure time
ascdsver	8.4.3.1	Processing system revision	ontime	30143.958897591	Sum of GTIs [s]
caldbver	4.4.9	 	ontime0	30143.958927393	Sum of GTIs [s]
date	2012-04-13T02:30:41	Date and time of file creation	ontime1	30143.958897591	Sum of GTIs [s]
revision	2	Processing version of data	ontime2	30143.958897531	Sum of GTIs [s]
			ontime3	30143.958897591	Sum of GTIs [s]
			ontime6	30147.199887753	Sum of GTIs [s]
			ontime7	30147.199887753	Sum of GTIs [s]
			l1events	1545883	Number of level 1 events

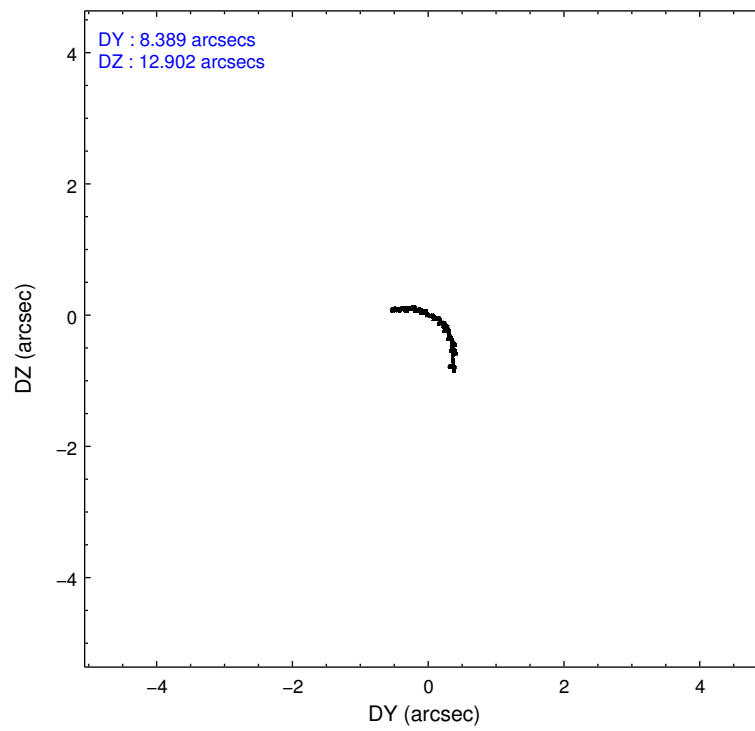
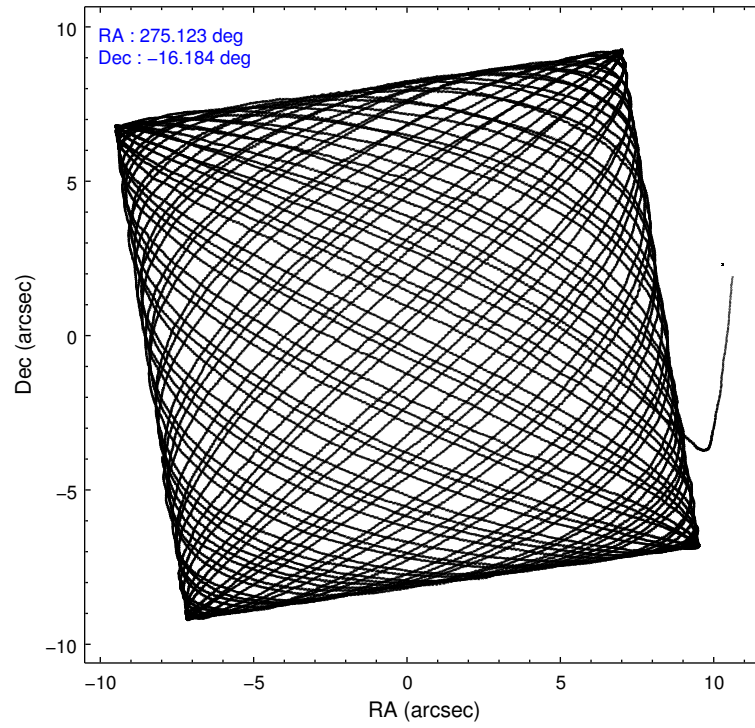
2.1.4 Events

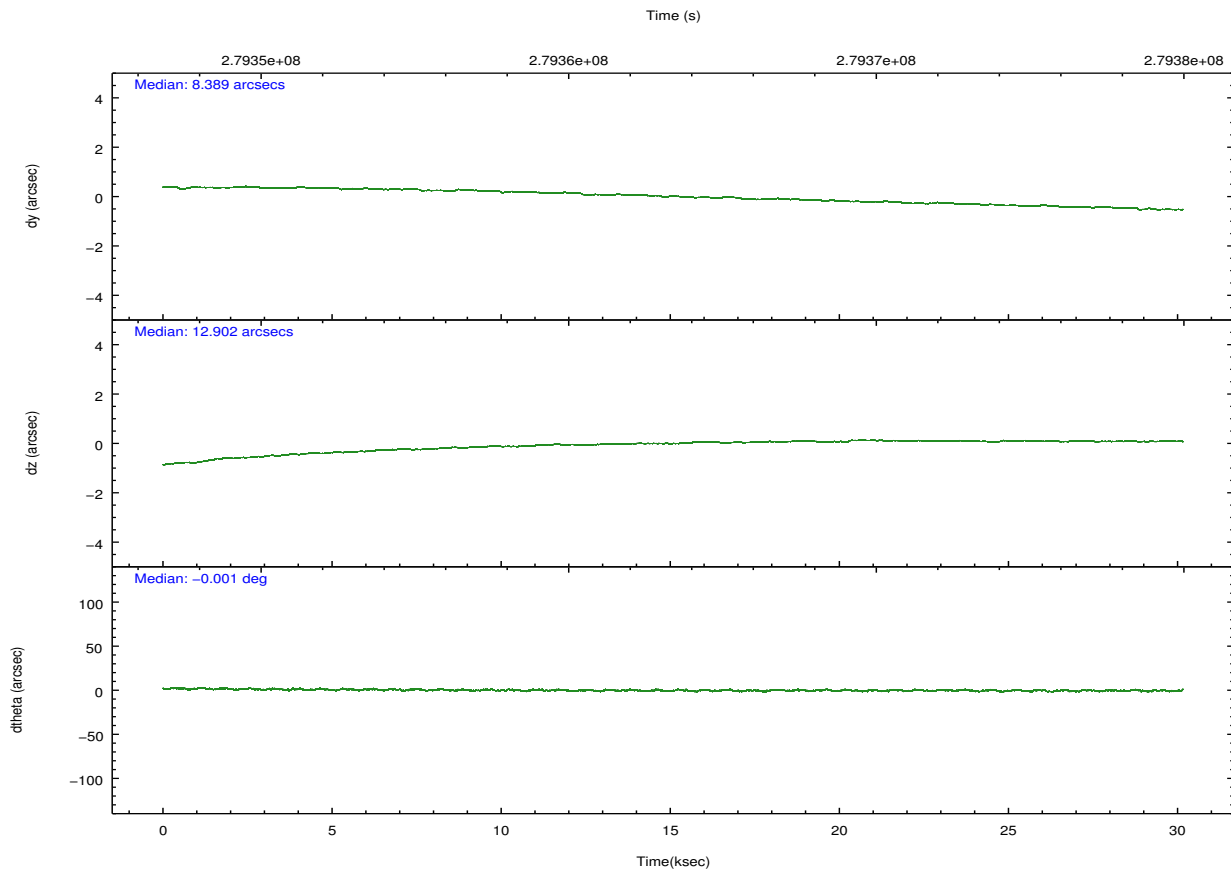
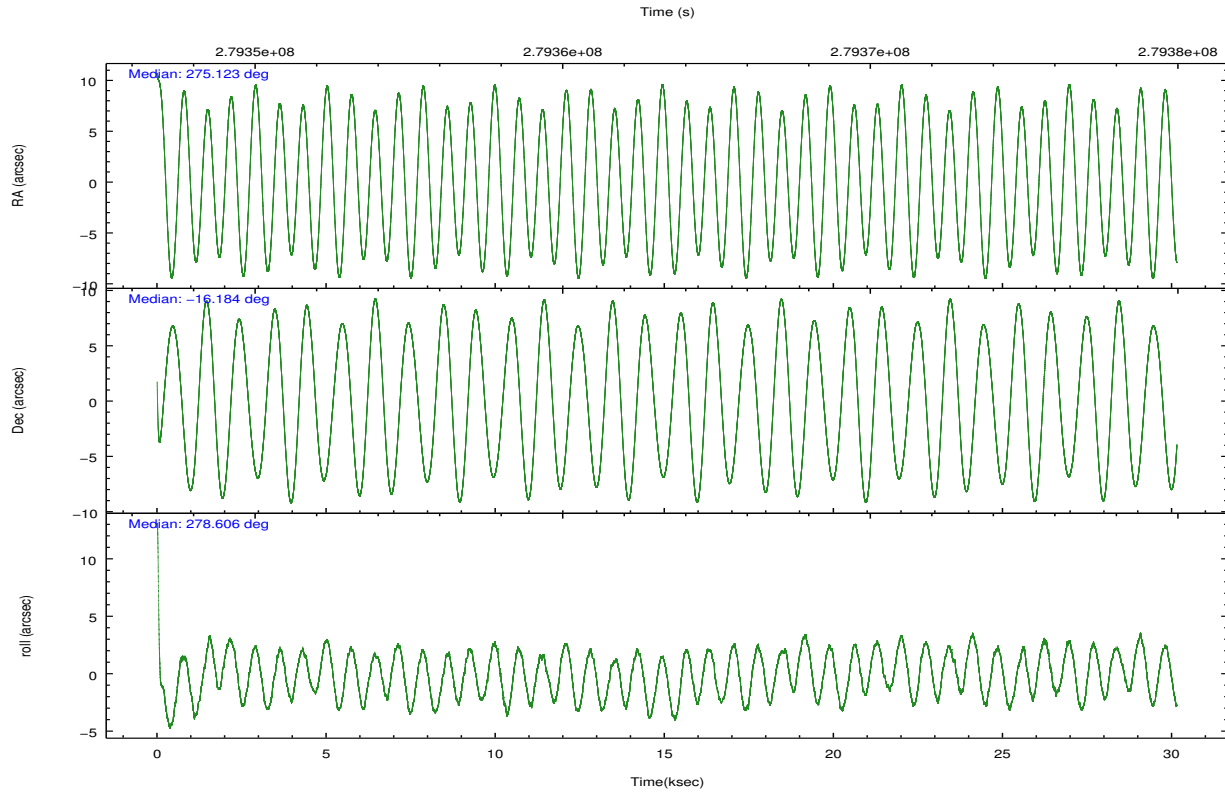
	ccd 0	ccd 1	ccd 2	ccd 3	ccd 6	ccd 7		ccd 0	ccd 1	ccd 2	ccd 3	ccd 6	ccd 7
level 1 events	235928	235585	268714	262480	264439	278737	grade 0 events	11816	16364	16165	24330	15346	14907
rejected events	209185	201708	236969	220203	232919	150194		5%	6%	6%	9%	5%	5%
rejected %	88%	85%	88%	83%	88%	53%	grade 1 events	247	251	223	445	154	323
								0%	0%	0%	0%	0%	0%
							grade 2 events	6127	7101	6507	7102	6016	27700
								2%	3%	2%	2%	2%	9%
							grade 3 events	3006	3220	2739	3443	2991	12568
								1%	1%	1%	1%	1%	4%
							grade 4 events	2736	3200	2886	3265	2864	12279
								1%	1%	1%	1%	1%	4%
							grade 5 events	8092	9126	7522	9852	9876	28021
								3%	3%	2%	3%	3%	10%
							grade 6 events	4757	5760	4466	5188	5379	66098
								2%	2%	1%	1%	2%	23%
							grade 7 events	199147	190563	228206	208855	221813	116841
								84%	80%	84%	79%	83%	41%

2.2 Compared Parameters

Parameter	Planned	Actual	Parameter	Planned	Actual
Instrument	ACIS	ACIS	Obspar format version number	7	7
Detector	ACIS-012367	ACIS-012367	Obspar file type	PREDICTED	ACTUAL
Grating	NONE	NONE	Obspar update status	NONE	UPDATED
Data mode	VFAINT	VFAINT	Number of optional ACIS chips dropped	0	0
Observation mode	POINTING	POINTING	On-chip summing requested	N	N
[deg] Pointing RA	275.105505	275.1233951951858	Subarray requested	NONE	NONE
[deg] Pointing Dec	-16.162308	-16.18365106968584	Alternating exposures requested	N	N
[deg] Pointing Roll	278.394691	278.6083625509245	[s] Primary exposure time	0.000000	3.2
[mm] SIM focus pos	-0.782348	-0.7809083437167272			
[mm] SIM defocus	0	0.001439871863259334			
[mm] SIM translation stage pos	-233.592463	-233.5874344608287			
[mm] SIM translation stage offset	0	-0.005018542100998502			
[s] Observation start time (MET)	279348479.184000	279346814.92274			
Observation start date	2006-11-08T04:46:54	2006-11-08T04:20:14			
[s] Observation end time (MET)	279378479.184000	279379362.26178			
Observation end date	2006-11-08T13:06:54	2006-11-08T13:22:42			
Read mode	TIMED	TIMED			

2.3 Aspect



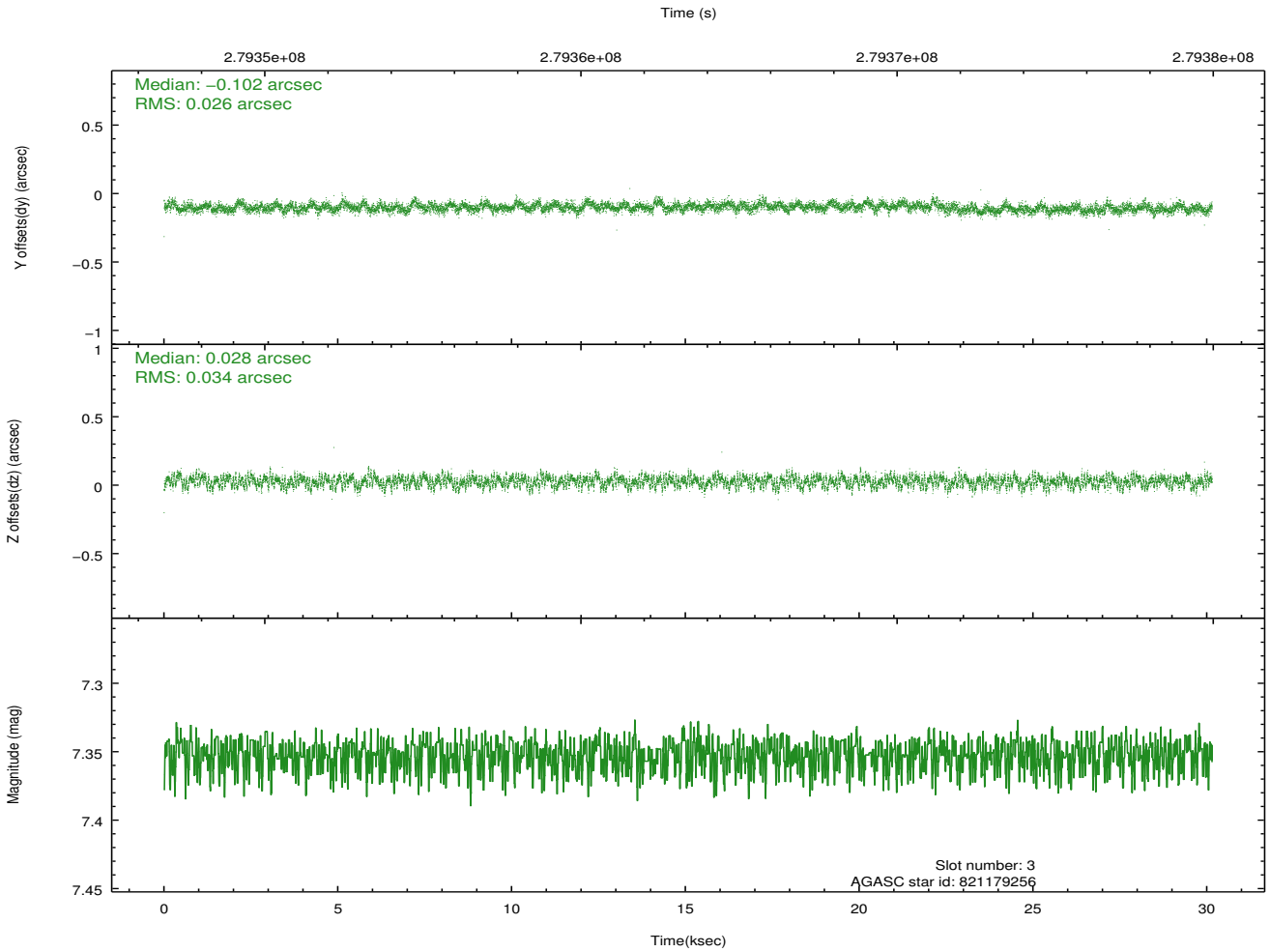
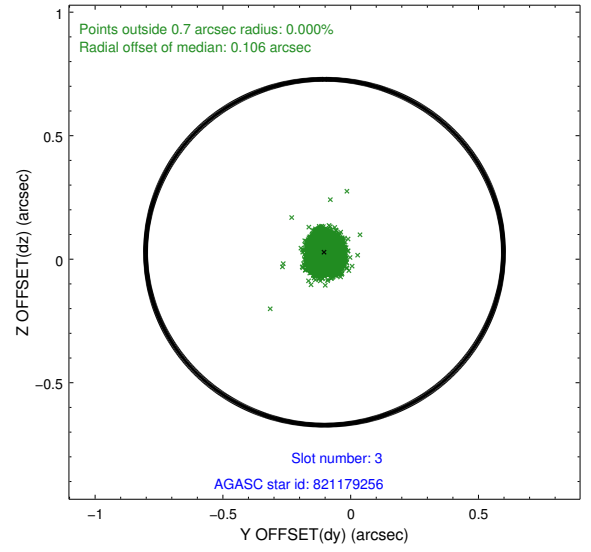
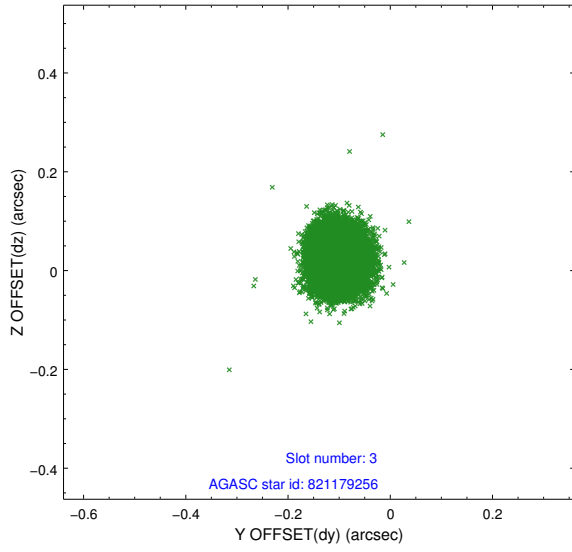


Slot Statistics

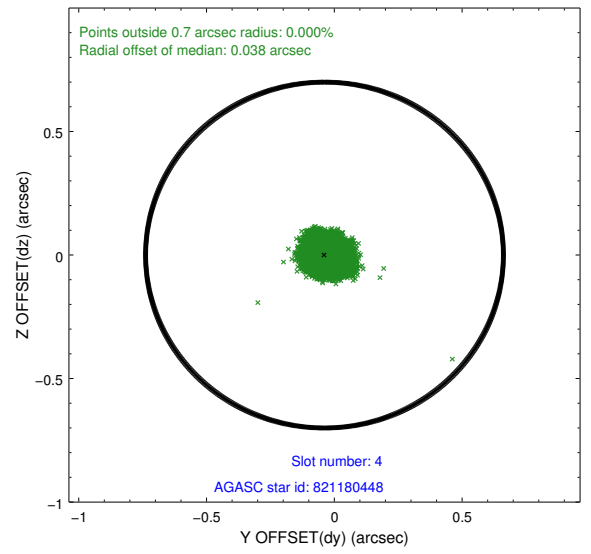
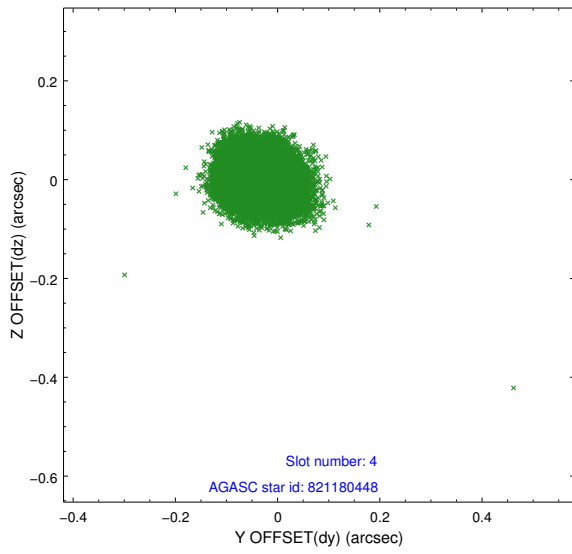
slot	status	id	mag	n_pts	med_dy	med_dz	dr1	dr2	ra	dec	mean_y	mean_z
0	FID	ACIS-I-1	7.24	7352	0.044	-0.010	0.018	0.036	0.000000	0.000000	931.30	-836.36
1	FID	ACIS-I-5	7.23	7354	-0.188	0.057	0.018	0.029	0.000000	0.000000	-1816.99	1061.18
2	FID	ACIS-I-6	7.24	7354	0.052	0.023	0.013	0.021	0.000000	0.000000	396.79	1705.71
3	GUIDE	821179256	7.35	14707	-0.102	0.028	0.046	0.074	274.840900	-15.612800	-2090.14	-618.86
4	GUIDE	821180448	7.17	14706	-0.038	-0.000	0.059	0.093	275.453560	-16.324585	754.62	1104.29
5	GUIDE	821168248	8.91	14704	-0.159	-0.138	0.085	0.133	274.322211	-15.621827	-2316.07	-2403.46
6	GUIDE	821181816	8.43	14705	0.148	-0.023	0.061	0.098	274.847938	-16.750455	1965.97	-1187.61
7	GUIDE	821183768	9.24	14703	0.152	0.135	0.079	0.128	275.638665	-16.595886	1815.67	1591.80

2.4 Star Slots

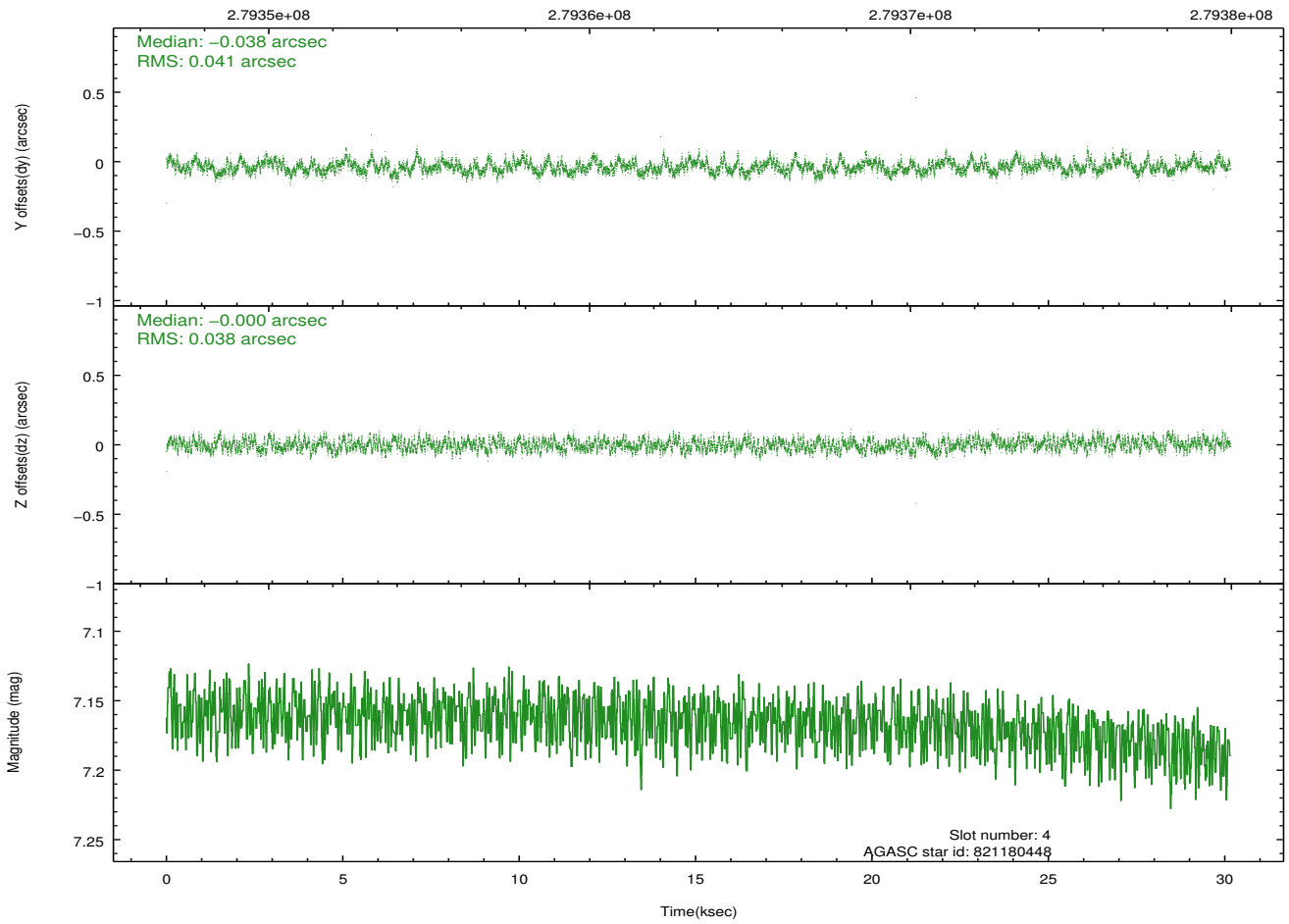
2.4.1 Slot 3



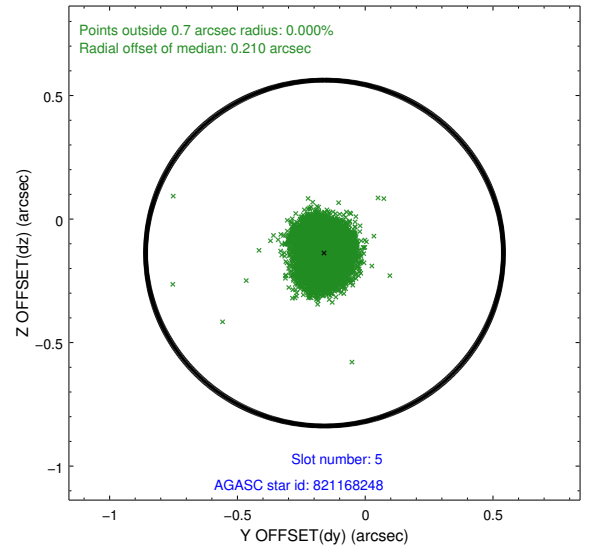
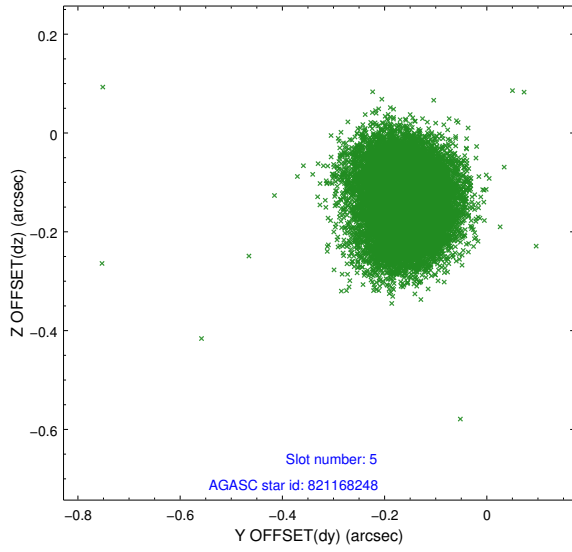
2.4.2 Slot 4



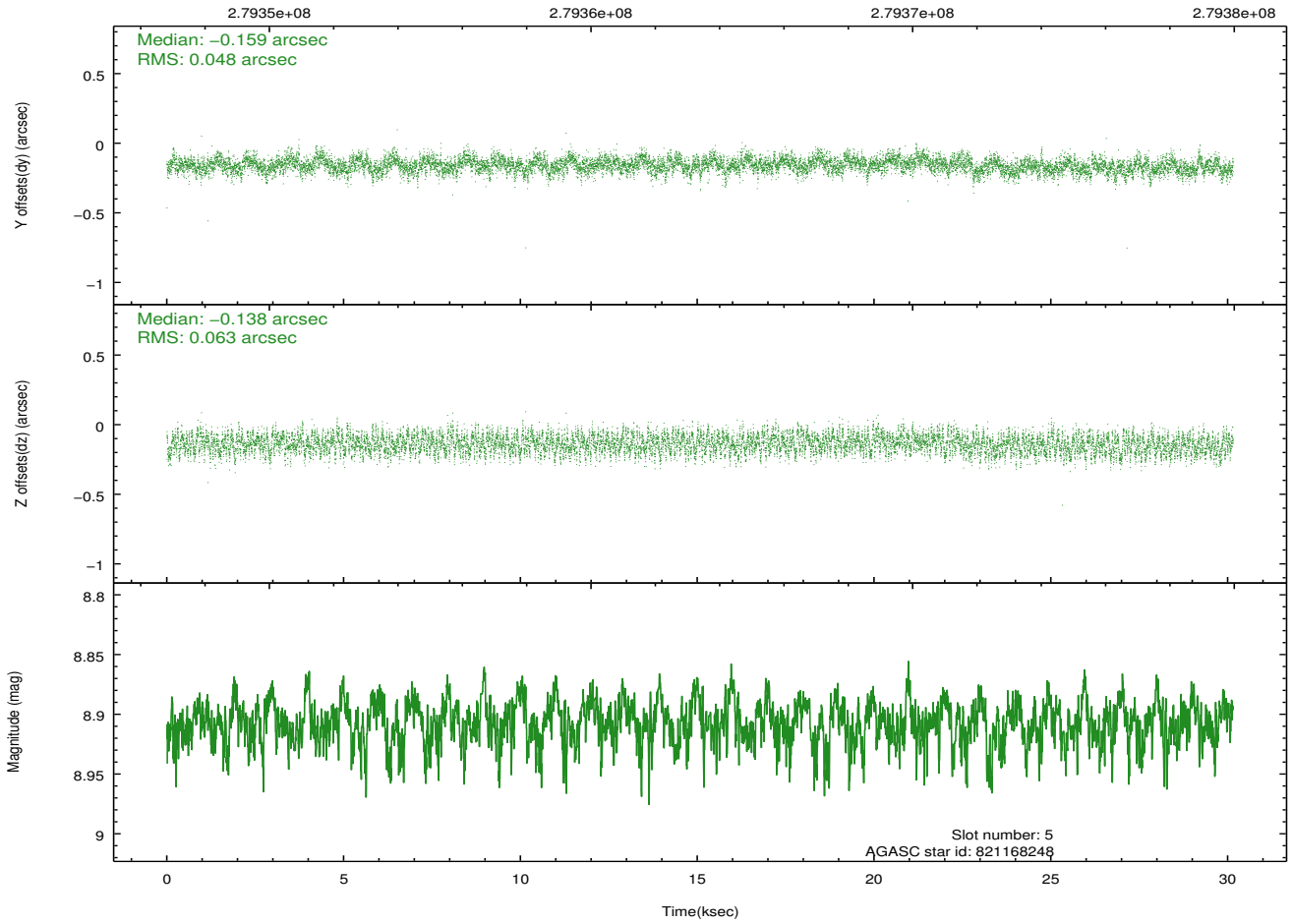
Time (s)



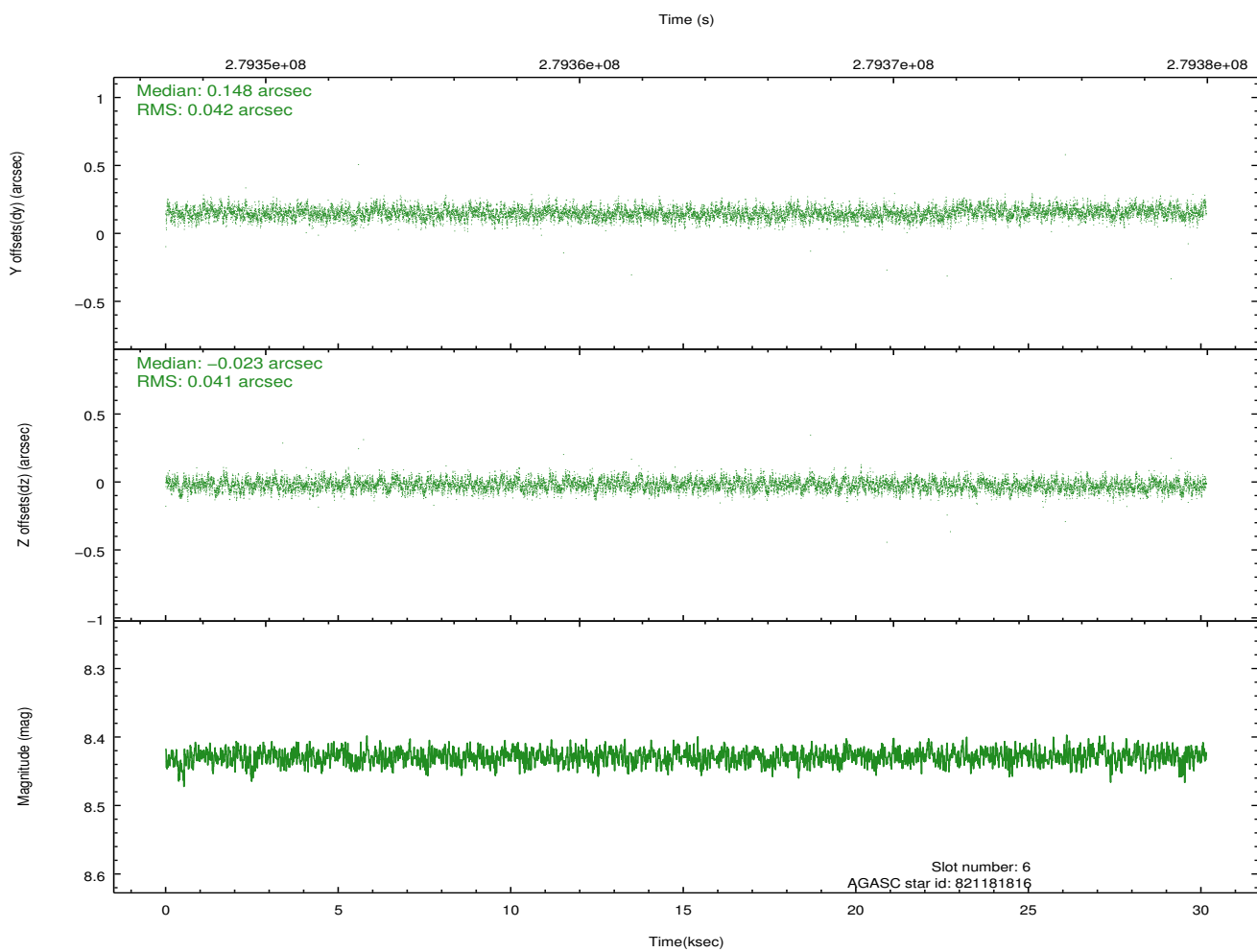
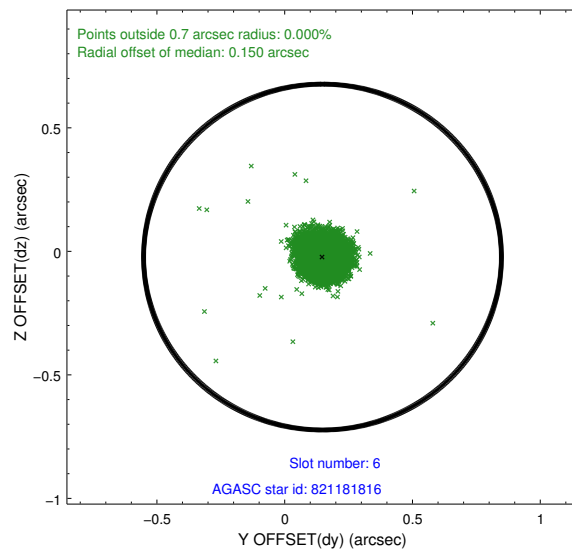
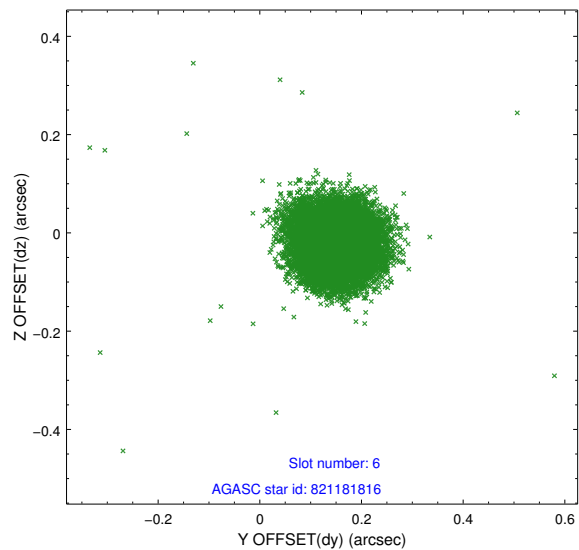
2.4.3 Slot 5



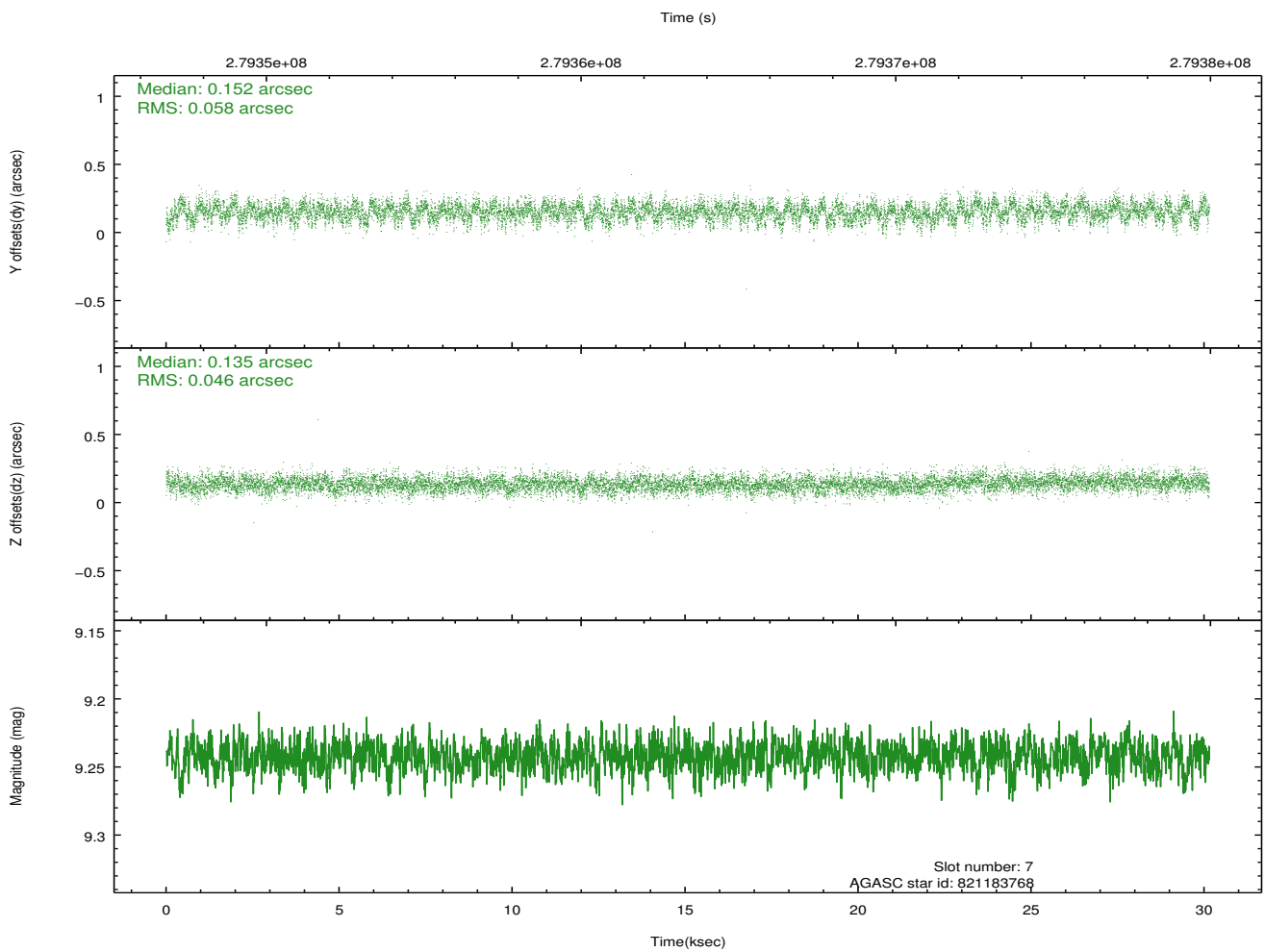
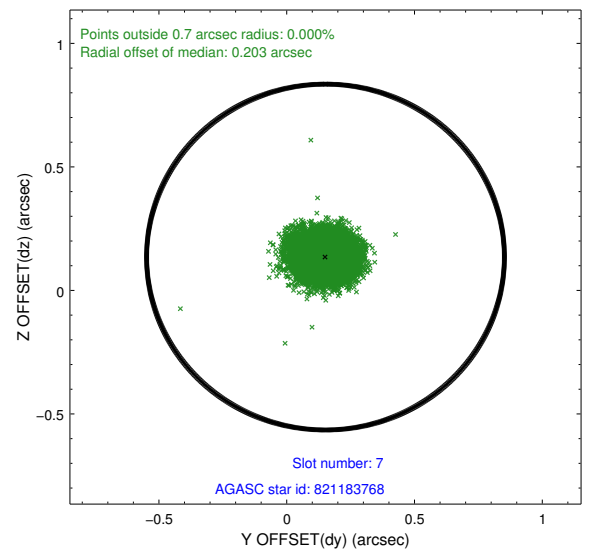
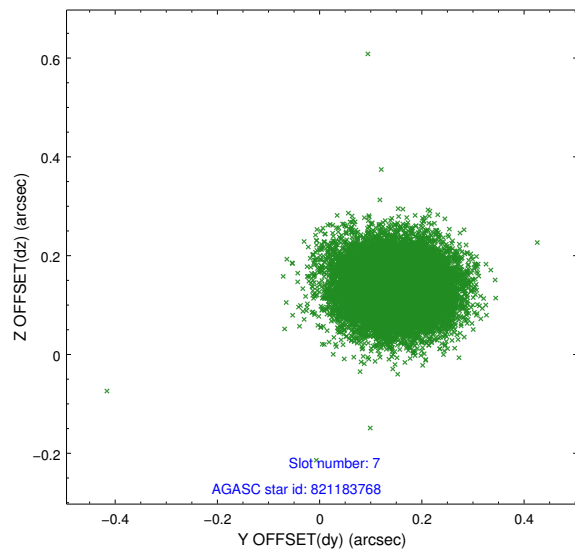
Time (s)



2.4.4 Slot 6

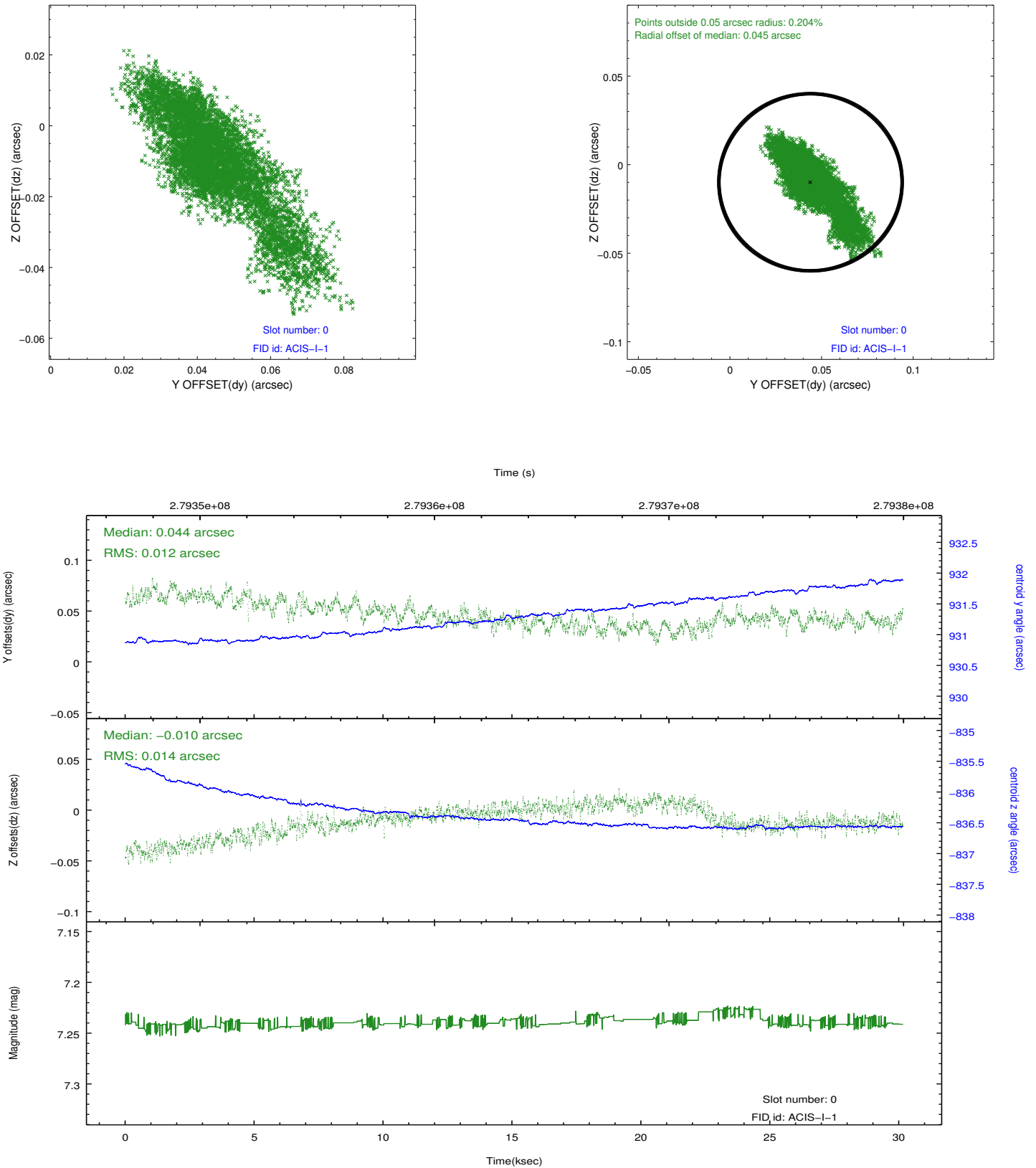


2.4.5 Slot 7

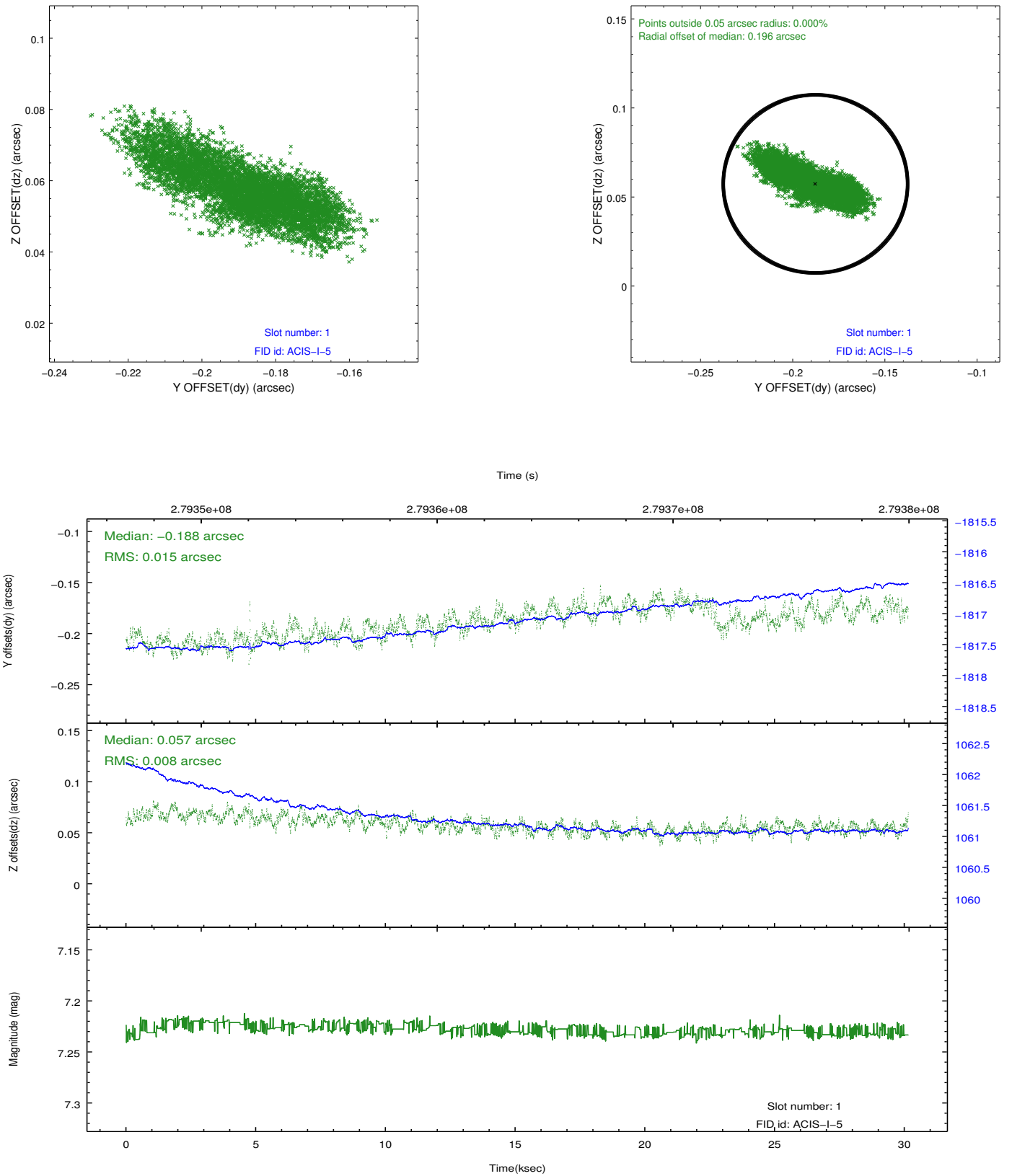


2.5 FID Slots

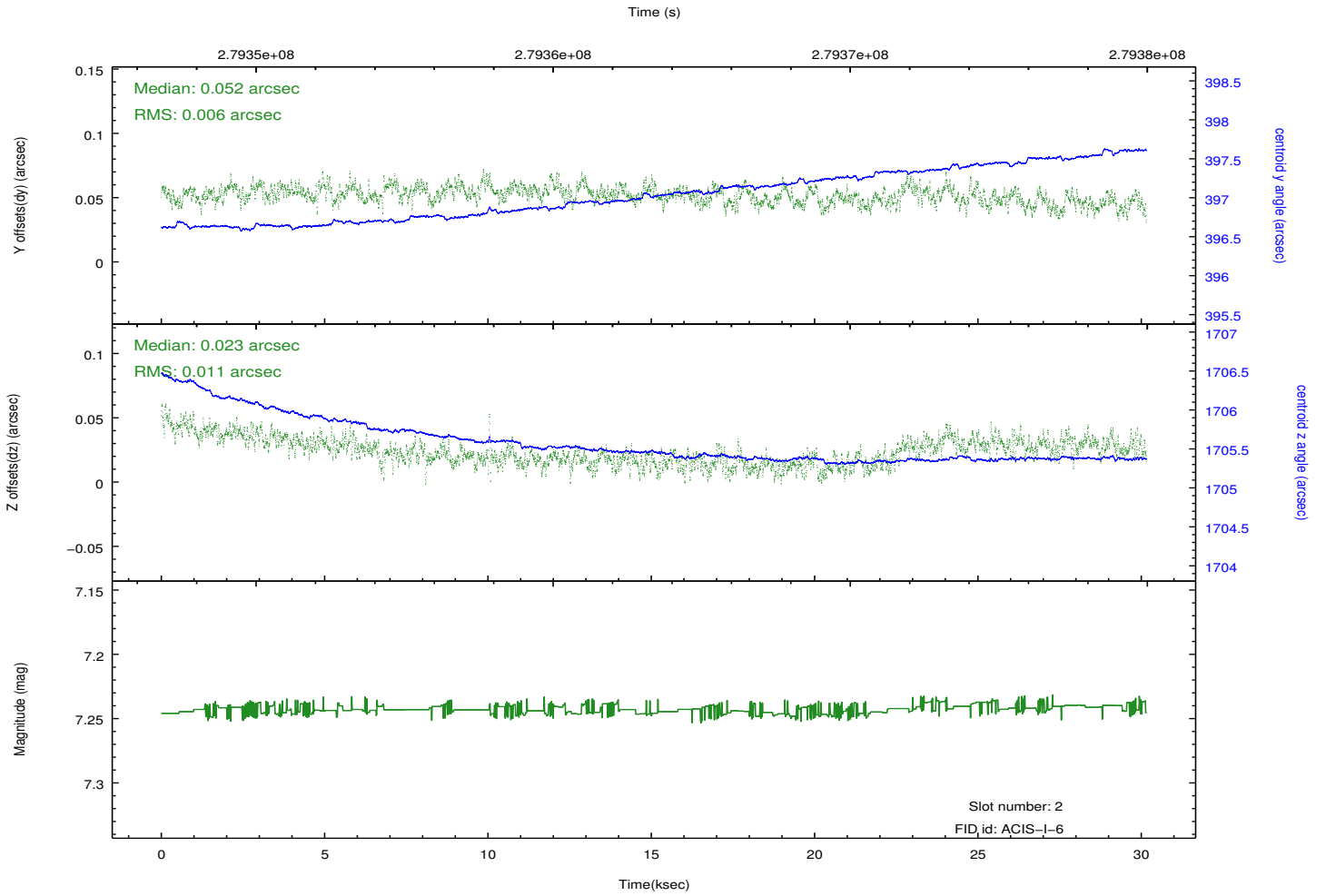
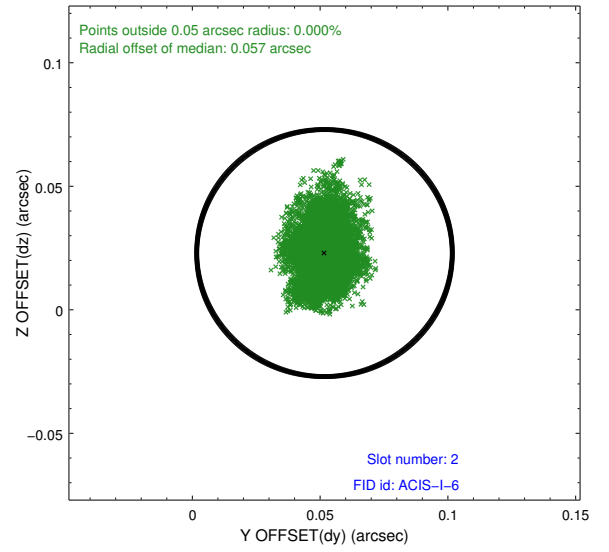
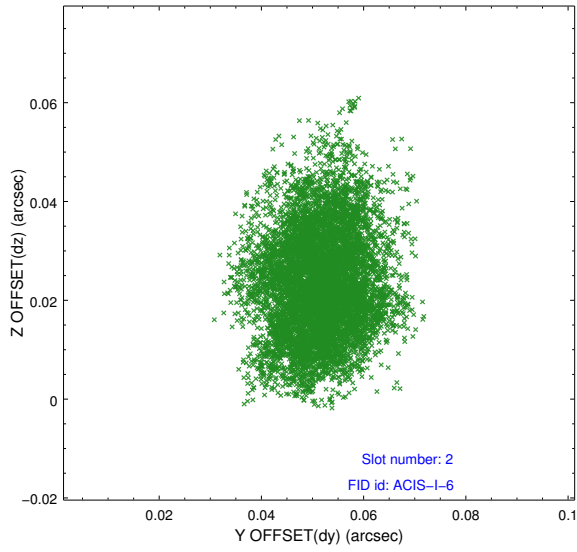
2.5.1 Slot 0



2.5.2 Slot 1



2.5.3 Slot 2



A Summary

A.1 Status

V&V Scientist	Beth Sundheim
V&V Date (YYYY-MM-DD)	2012.04.13
V&V Edition	1
V&V Disposition and Status	OK
V&V Charge Time	30.1439588

A.2 Comments