

V&V Reference Report

L2 ASCDS Version : 8.4.4

Observation 8550 - L2 Version 3
Chandra X-Ray Center

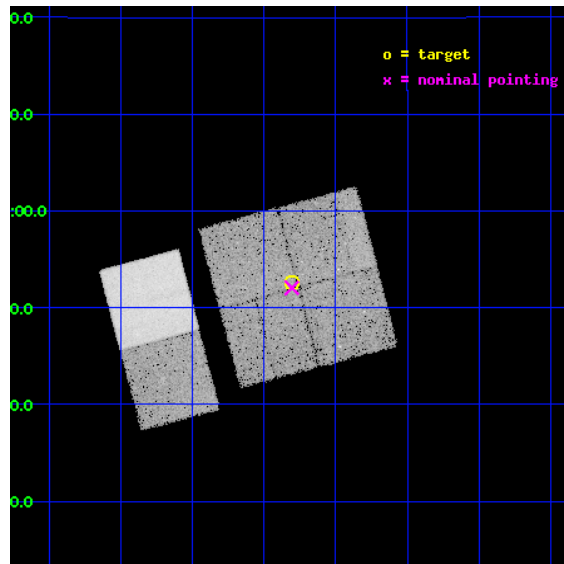
L2 Processing Date : Apr 23 2012

Contents

1	Front	2
2	OBI	3
2.1	OBI	3
2.1.1	Images	3
2.1.2	Bias	3
2.1.3	Parameters	4
2.1.4	Events	4
2.2	Compared Parameters	5
2.3	Aspect	6
2.4	Star Slots	9
2.4.1	Slot 3	9
2.4.2	Slot 4	10
2.4.3	Slot 5	11
2.4.4	Slot 6	12
2.4.5	Slot 7	13
2.5	FID Slots	14
2.5.1	Slot 0	14
2.5.2	Slot 1	15
2.5.3	Slot 2	16
A	Summary	17
A.1	Status	17
A.2	Comments	17

1 Front

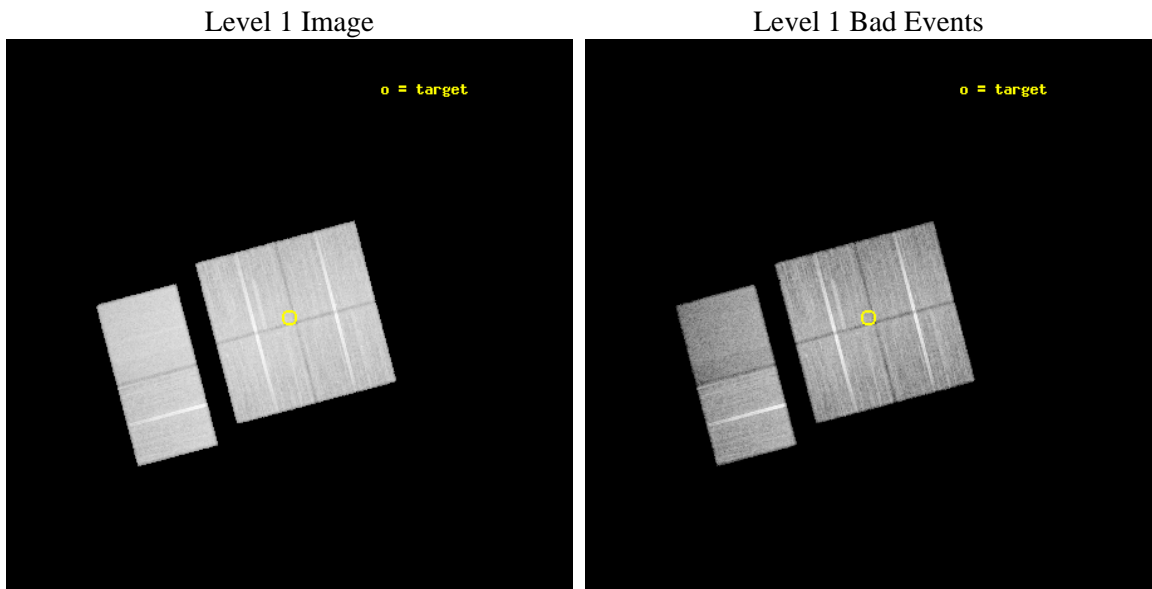
seq_num	900560	Sequence number
obs_id	8550	Observation id
title	THE CHANDRA-COSMOS SURVEY	Proposal title
observer	Dr. Martin Elvis	Principal investigator
object	C-COSMOS5-1	Source name
dtcycle	0	
cycle	P	events from which exps? Prim/Second/Both
ra_targ	150.326033	Observer's specified target RA [deg]
dec_targ	1.87565	Observer's specified target Dec [deg]
ra_nom	150.32638714598	Nominal RA [deg]
dec_nom	1.8675551113236	Nominal Dec [deg]
roll_nom	255.20869037016	Nominal Roll [deg]
revision	3	Processing version of data
ontime	23468.717941999	Sum of GTIs [s]
livetime	23171.542904252	Livetime [s]
ontime0	23471.958932281	Sum of GTIs [s]
ontime1	23468.718011558	Sum of GTIs [s]
ontime2	23475.199912608	Sum of GTIs [s]
ontime3	23468.717941999	Sum of GTIs [s]
ontime6	23475.199912608	Sum of GTIs [s]
ontime7	23475.199912608	Sum of GTIs [s]
l2events	171668	Number of level 2 events



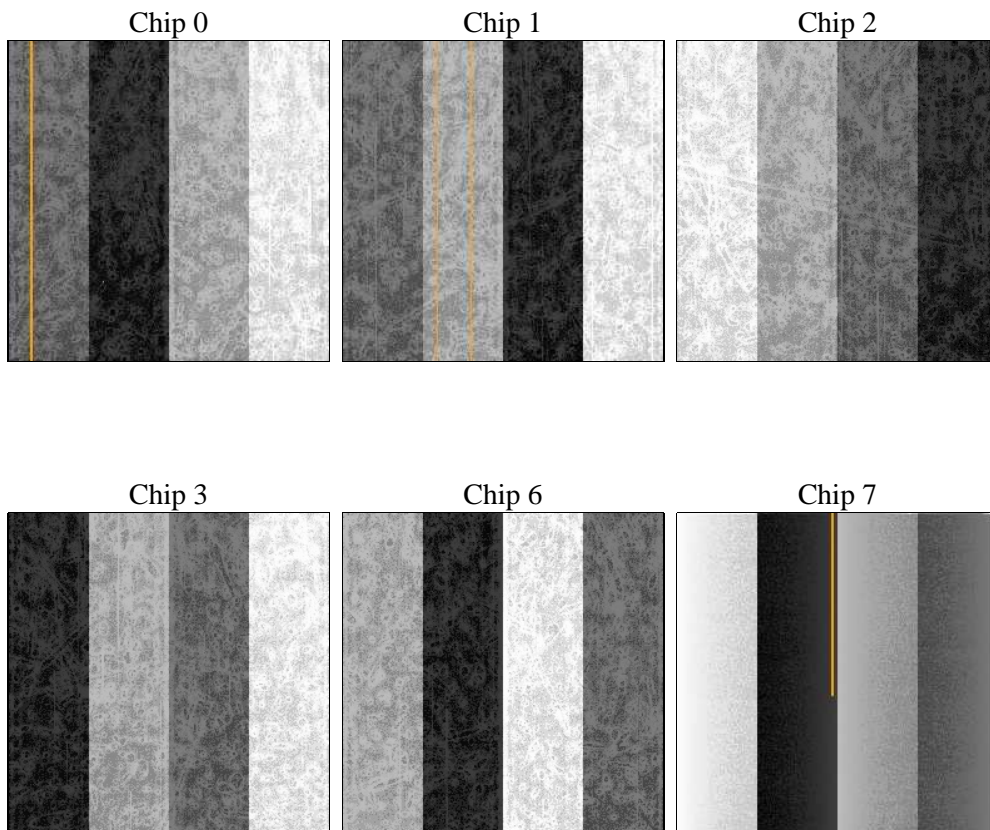
2 OBI

2.1 OBI

2.1.1 Images



2.1.2 Bias



2.1.3 Parameters

obi_num	0	Obi number	sched_exp_time	23294.977000	[s] Scheduled observation exposure time
ascdsver	8.4.4	Processing system revision	ontime	23468.717941999	Sum of GTIs [s]
caldsver	4.4.9	 	ontime0	23471.958932281	Sum of GTIs [s]
date	2012-04-23T10:31:34	Date and time of file creation	ontime1	23468.718011558	Sum of GTIs [s]
revision	3	Processing version of data	ontime2	23475.199912608	Sum of GTIs [s]
			ontime3	23468.717941999	Sum of GTIs [s]
			ontime6	23475.199912608	Sum of GTIs [s]
			ontime7	23475.199912608	Sum of GTIs [s]
			l1events	1207478	Number of level 1 events

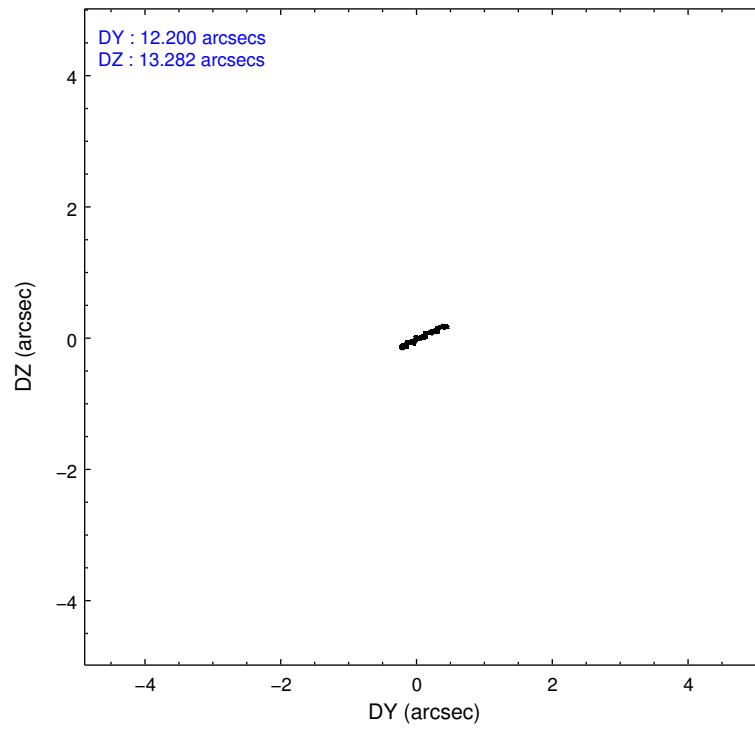
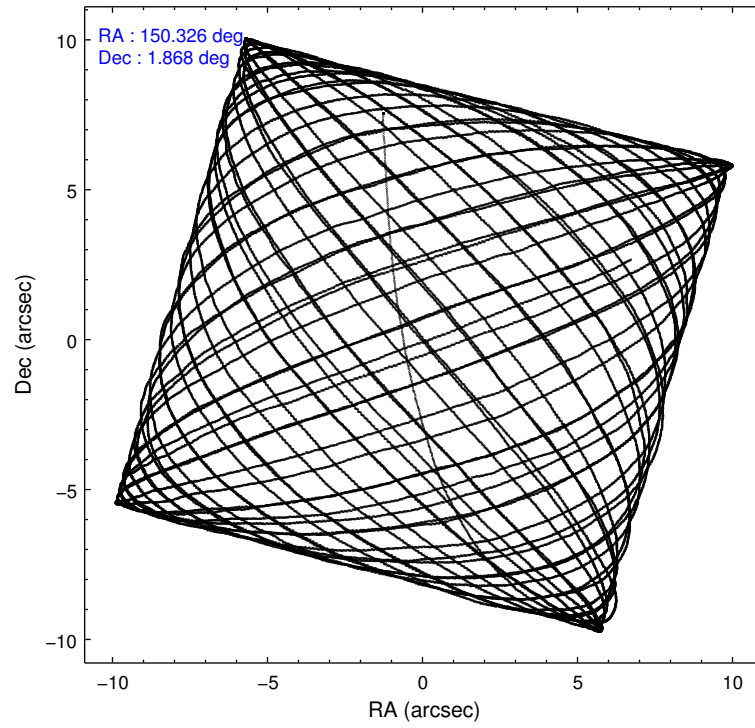
2.1.4 Events

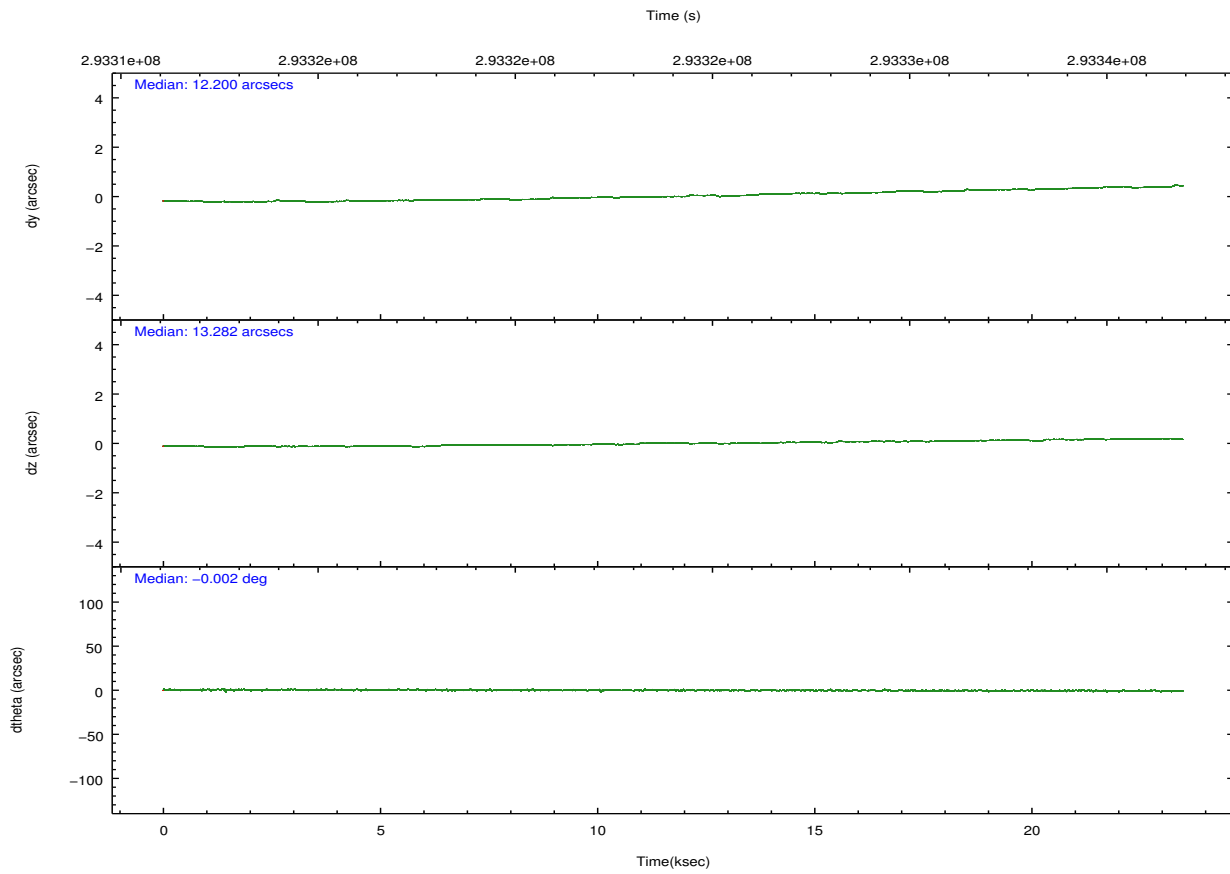
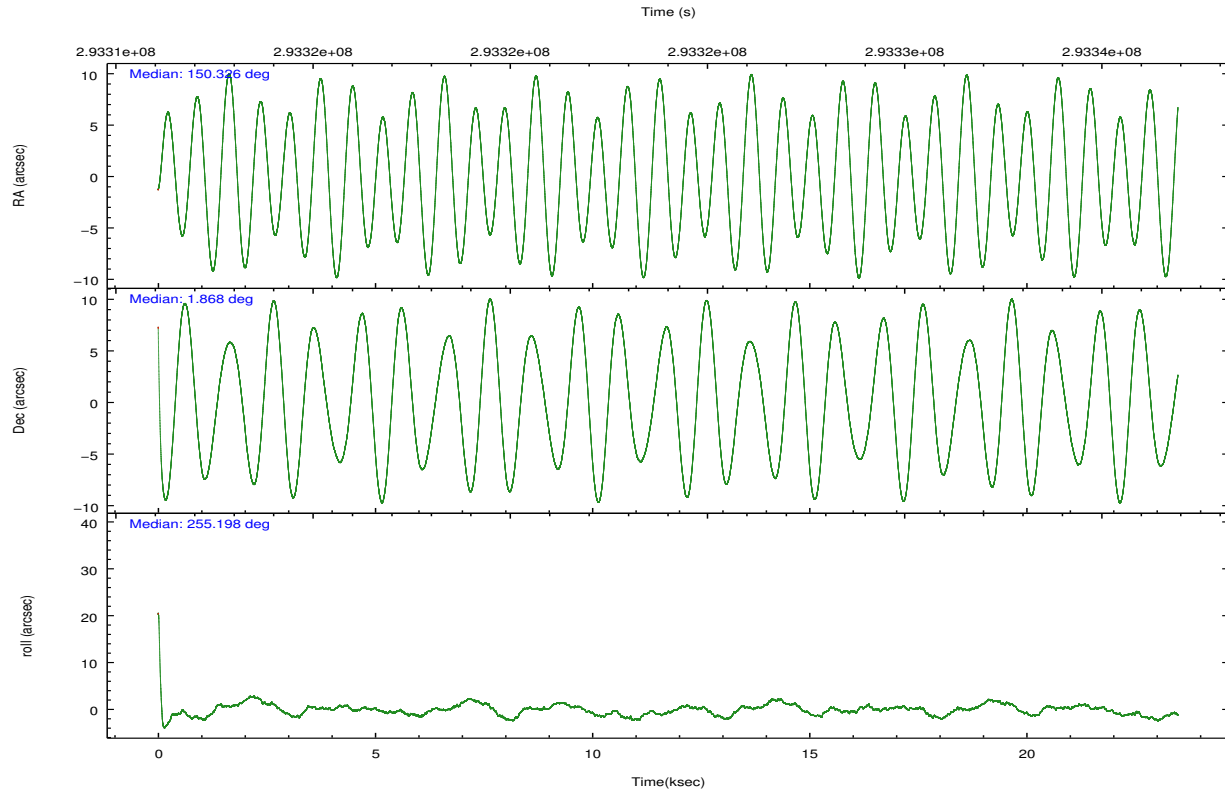
	ccd 0	ccd 1	ccd 2	ccd 3	ccd 6	ccd 7		ccd 0	ccd 1	ccd 2	ccd 3	ccd 6	ccd 7
level 1 events	186155	185238	209886	200934	204740	220525	grade 0 events	7130	8235	6770	6600	7006	9251
rejected events	167498	163876	191950	183196	185295	124876		3%	4%	3%	3%	3%	4%
rejected %	89%	88%	91%	91%	90%	56%	grade 1 events	96	94	117	128	98	253
								0%	0%	0%	0%	0%	0%
							grade 2 events	4722	4929	4392	4066	4561	20231
								2%	2%	2%	2%	2%	9%
							grade 3 events	2120	2443	2023	2124	2217	9304
								1%	1%	0%	1%	1%	4%
							grade 4 events	1996	2354	2101	2132	2250	9115
								1%	1%	1%	1%	1%	4%
							grade 5 events	6669	7419	6271	7864	8086	23294
								3%	4%	2%	3%	3%	10%
							grade 6 events	3698	4469	3543	3775	4394	52657
								1%	2%	1%	1%	2%	23%
							grade 7 events	159724	155295	184669	174245	176128	96420
								85%	83%	87%	86%	86%	43%

2.2 Compared Parameters

Parameter	Planned	Actual	Parameter	Planned	Actual
Instrument	ACIS	ACIS	Obspar format version number	7	7
Detector	ACIS-012367	ACIS-012367	Obspar file type	PREDICTED	ACTUAL
Grating	NONE	NONE	Obspar update status	NONE	UPDATED
Data mode	VFAINT	VFAINT	CCD I0 on	Y	Y
Observation mode	POINTING	POINTING	CCD I1 on	Y	Y
[deg] Pointing RA	150.319058	150.3263871459802	CCD I2 on	Y	Y
[deg] Pointing Dec	1.894078	1.867555111323608	CCD I3 on	Y	Y
[deg] Pointing Roll	255.000227	255.2086903701634	CCD S0 on	N	N
[mm] SIM focus pos	-0.782348	-0.7809083437167272	CCD S1 on	N	N
[mm] SIM defocus	0	0.001439871863259334	CCD S2 on	O1	Y
[mm] SIM translation stage pos	-233.592463	-233.5874344608287	CCD S3 on	O2	Y
[mm] SIM translation stage offset	0	-0.005018542100998502	CCD S4 on	N	N
[s] Observation start time (MET)	293312438.184000	293310769.32267	CCD S5 on	N	N
Observation start date	2007-04-18T19:39:33	2007-04-18T19:12:49	Number of optional ACIS chips dropped	0	0
[s] Observation end time (MET)	293335732.184000	293335971.51137	On-chip summing requested	N	N
Observation end date	2007-04-19T02:07:47	2007-04-19T02:12:51	Subarray requested	NONE	NONE
Read mode	TIMED	TIMED	Alternating exposures requested	N	N
			[s] Primary exposure time	0.000000	3.2

2.3 Aspect



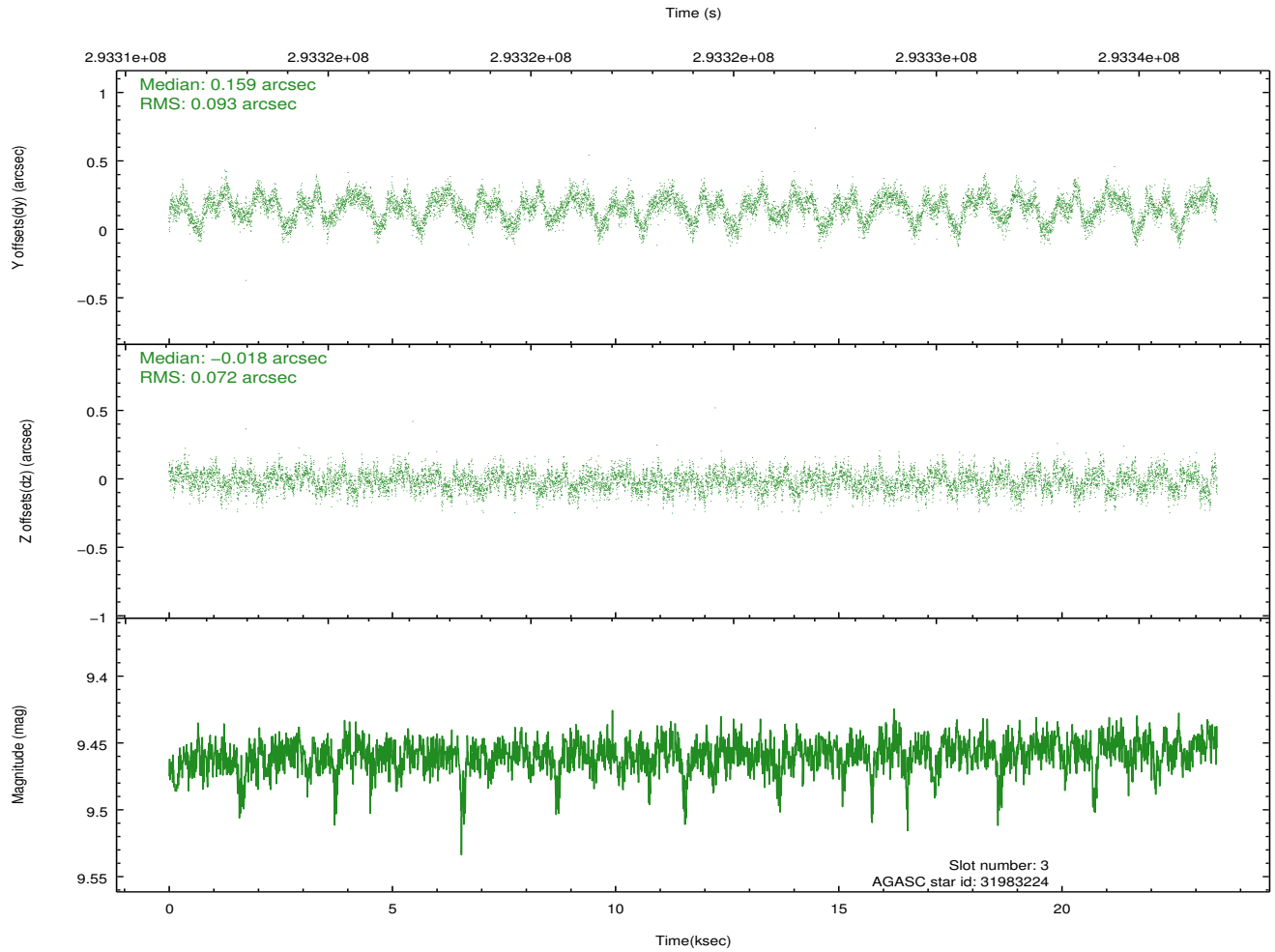
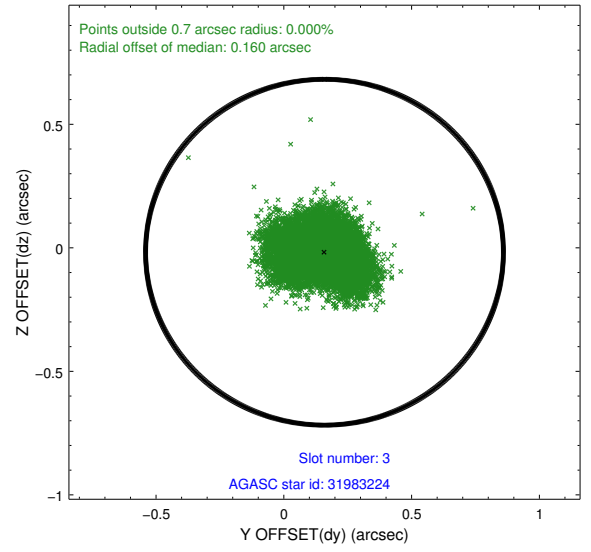
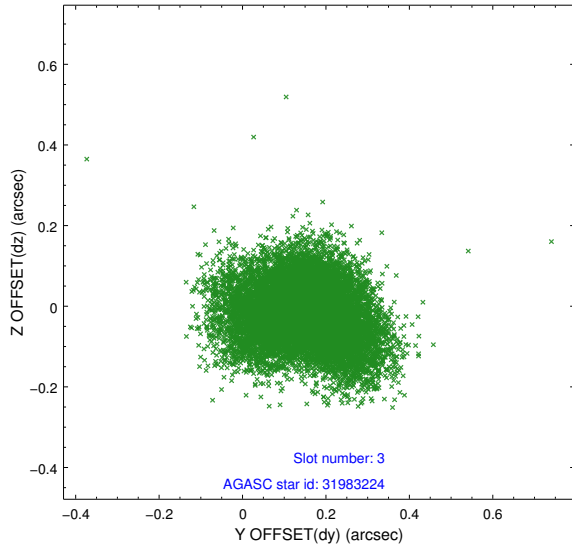


Slot Statistics

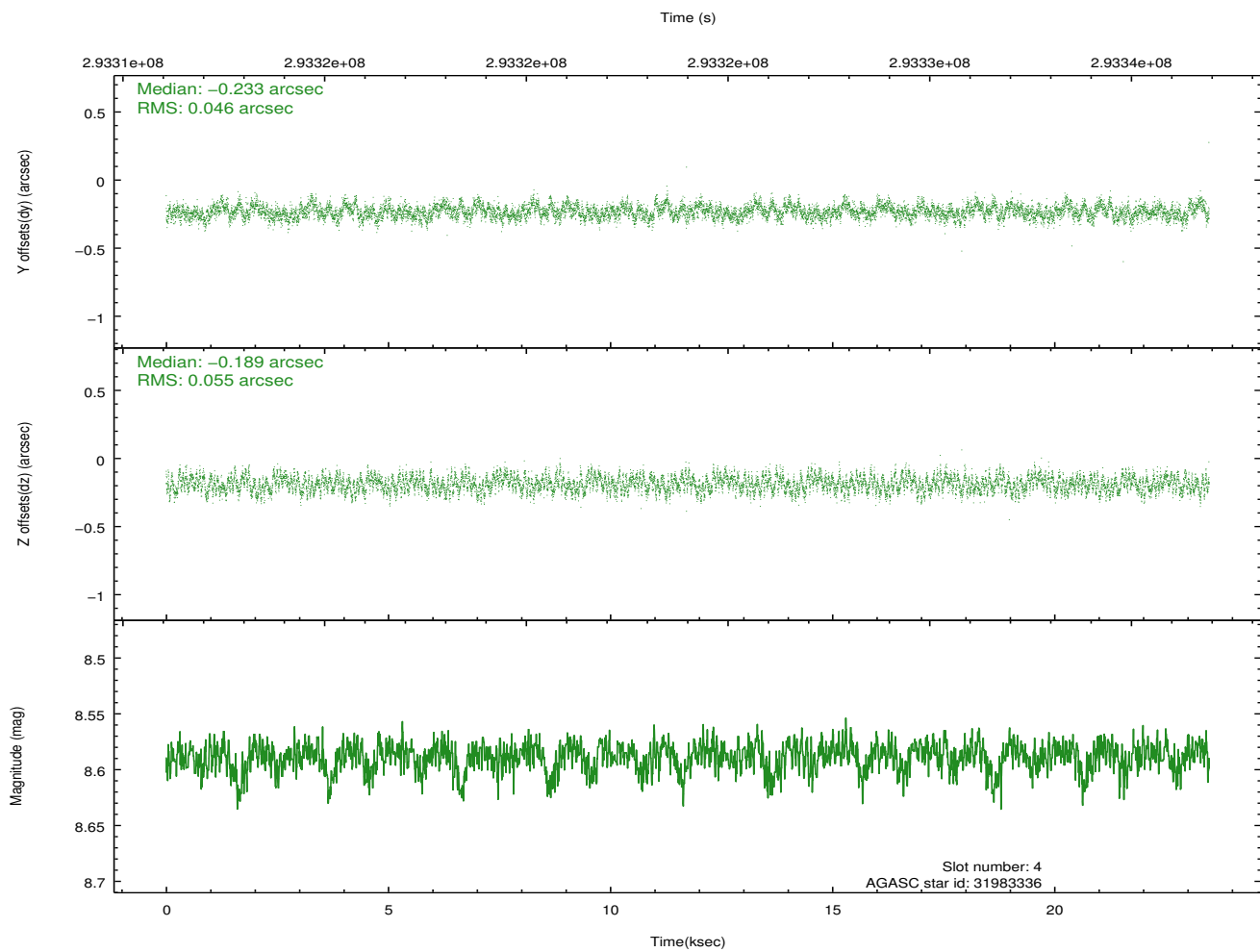
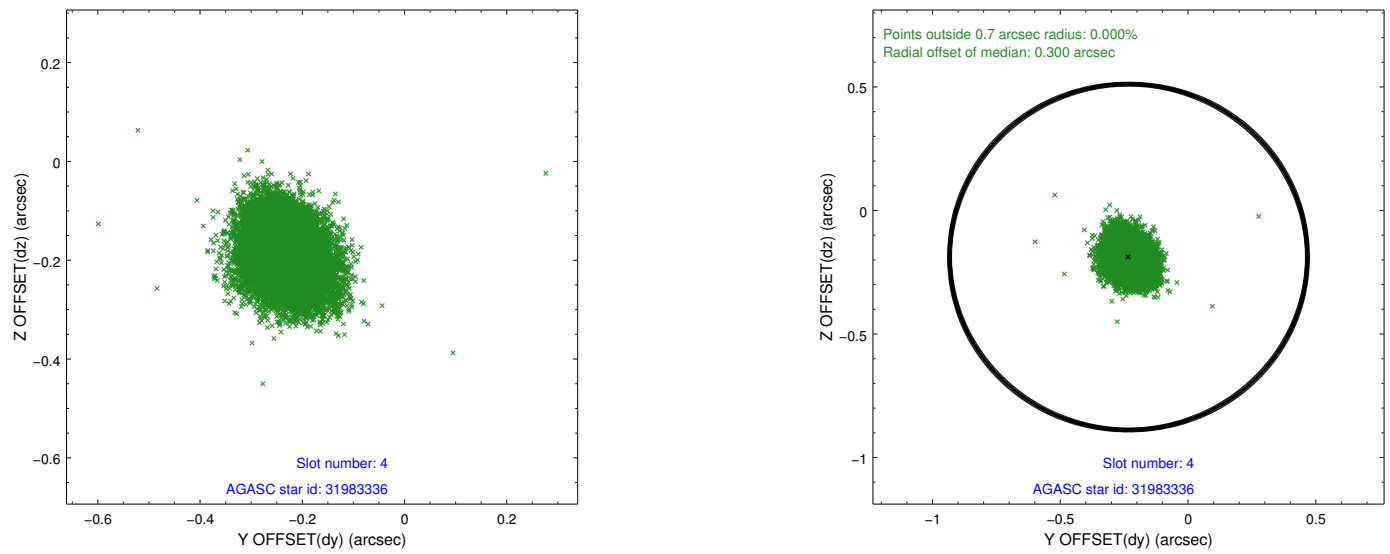
slot	status	id	mag	n_pts	med_dy	med_dz	dr1	dr2	ra	dec	mean_y	mean_z
0	FID	ACIS-I-1	7.23	5728	0.038	0.005	0.010	0.022	0.000000	0.000000	927.33	-836.84
1	FID	ACIS-I-5	7.23	5728	-0.205	0.048	0.009	0.016	0.000000	0.000000	-1820.94	1060.63
2	FID	ACIS-I-6	7.24	5727	0.075	0.018	0.010	0.016	0.000000	0.000000	392.77	1705.26
3	GUIDE	31983224	9.46	11445	0.159	-0.018	0.124	0.203	150.543757	1.869948	-125.32	803.62
4	GUIDE	31983336	8.59	11451	-0.233	-0.189	0.077	0.121	150.429924	2.291234	-1484.45	15.02
5	GUIDE	31985760	8.46	11454	-0.075	0.096	0.072	0.116	150.924581	2.094394	-1261.06	1917.49
6	GUIDE	31986152	9.01	11446	0.108	0.222	0.154	0.223	150.840314	2.057585	-1054.31	1659.14
7	GUIDE	31075368	9.14	11440	0.042	-0.121	0.114	0.183	149.743370	2.396723	-1211.01	-2469.24

2.4 Star Slots

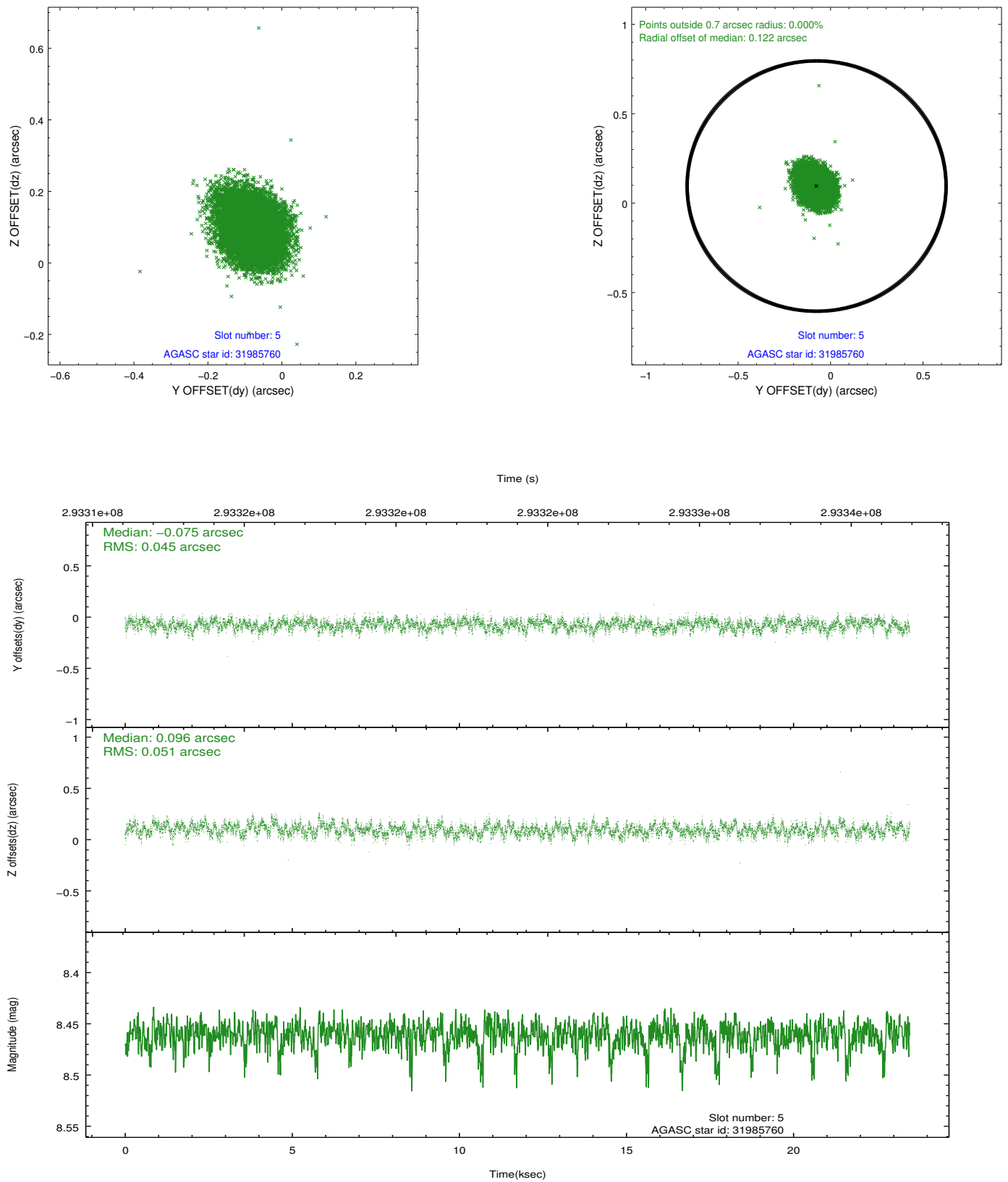
2.4.1 Slot 3



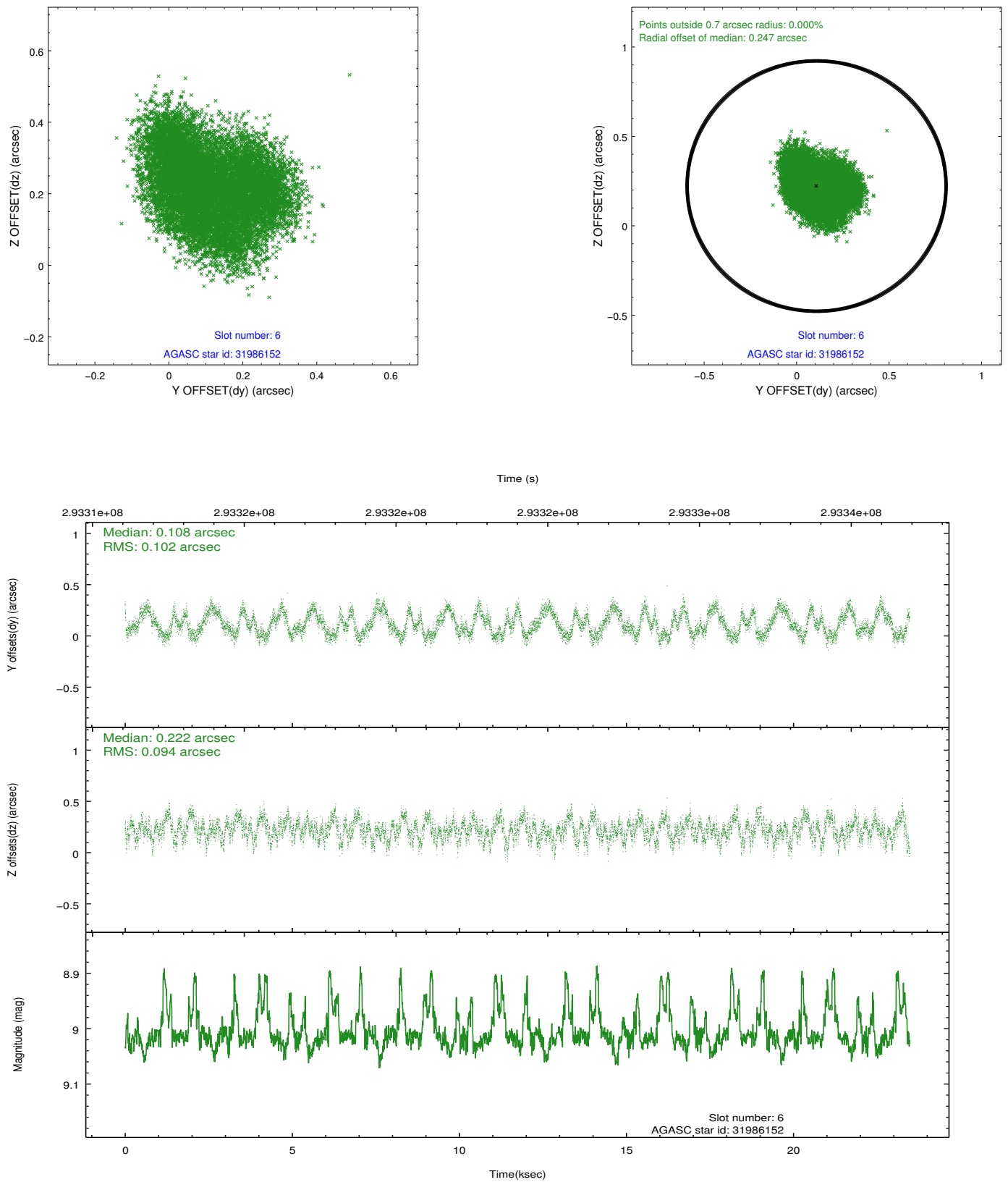
2.4.2 Slot 4



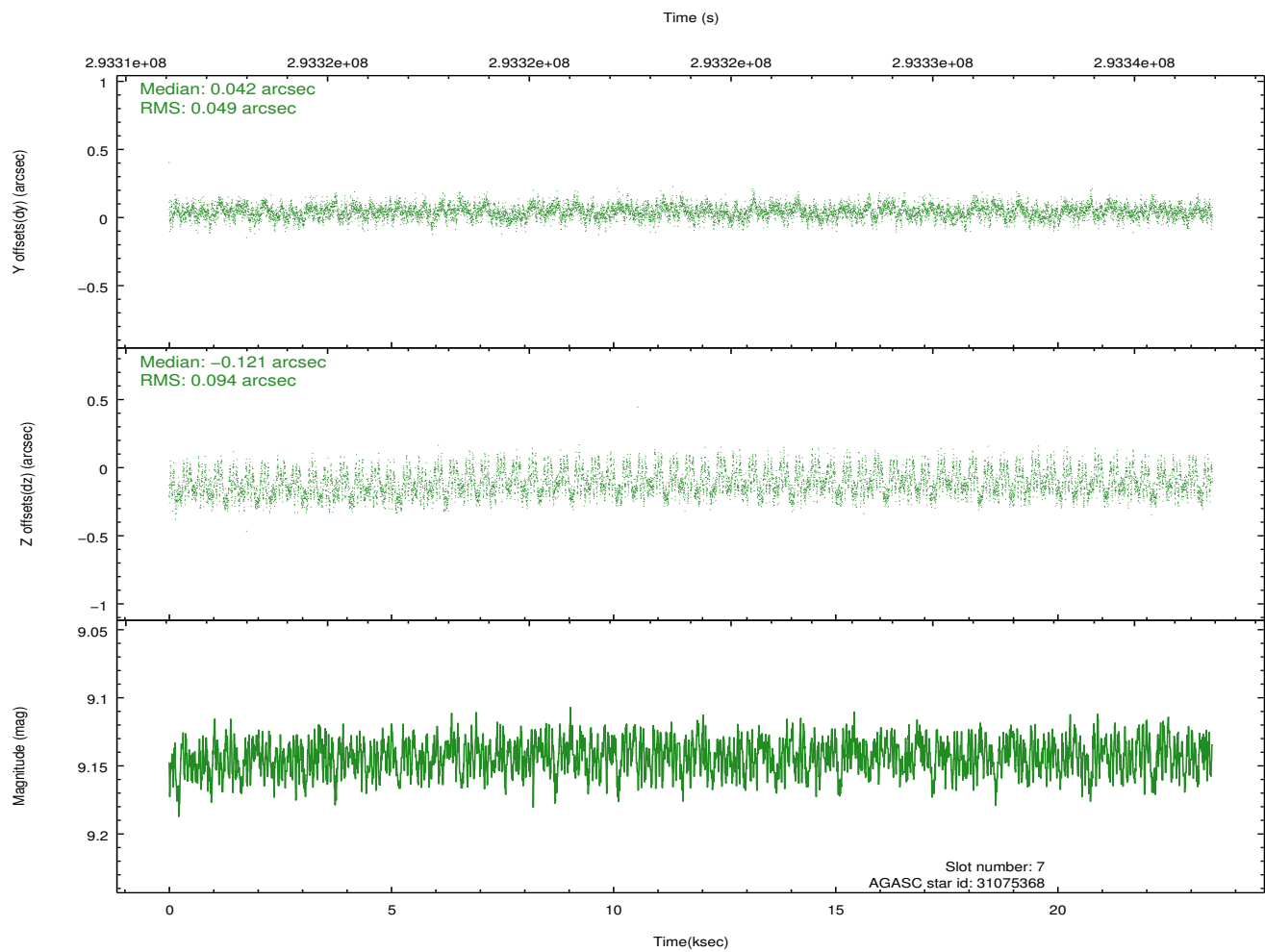
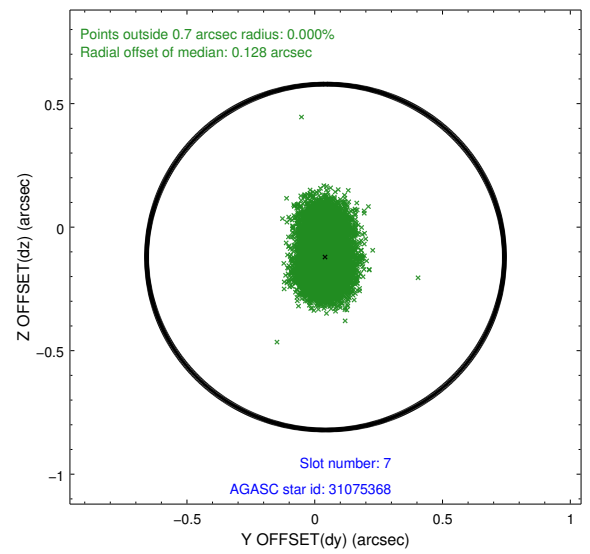
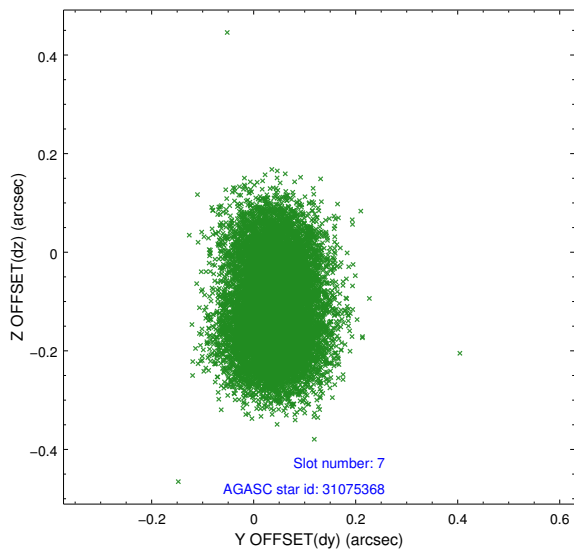
2.4.3 Slot 5



2.4.4 Slot 6

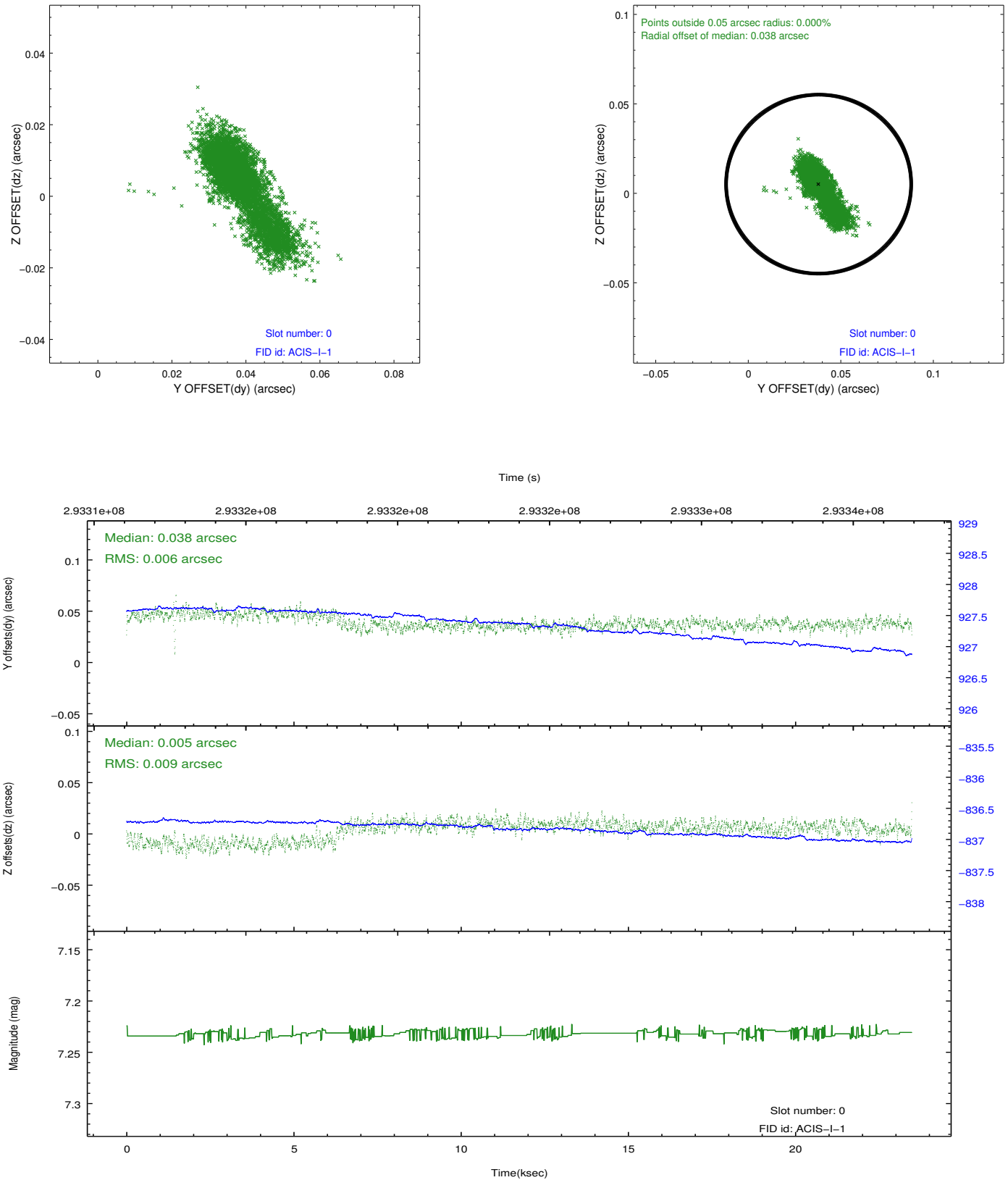


2.4.5 Slot 7

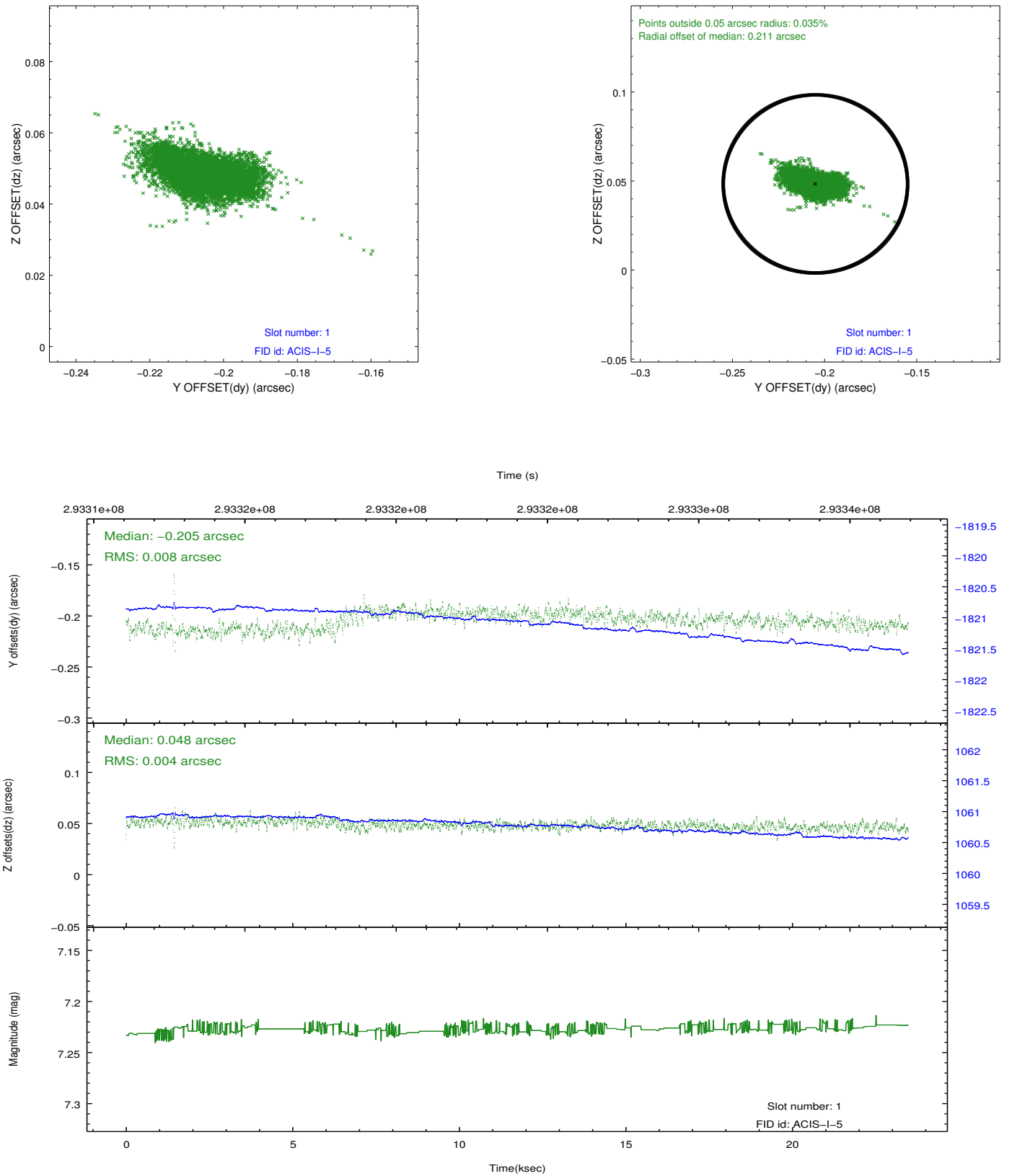


2.5 FID Slots

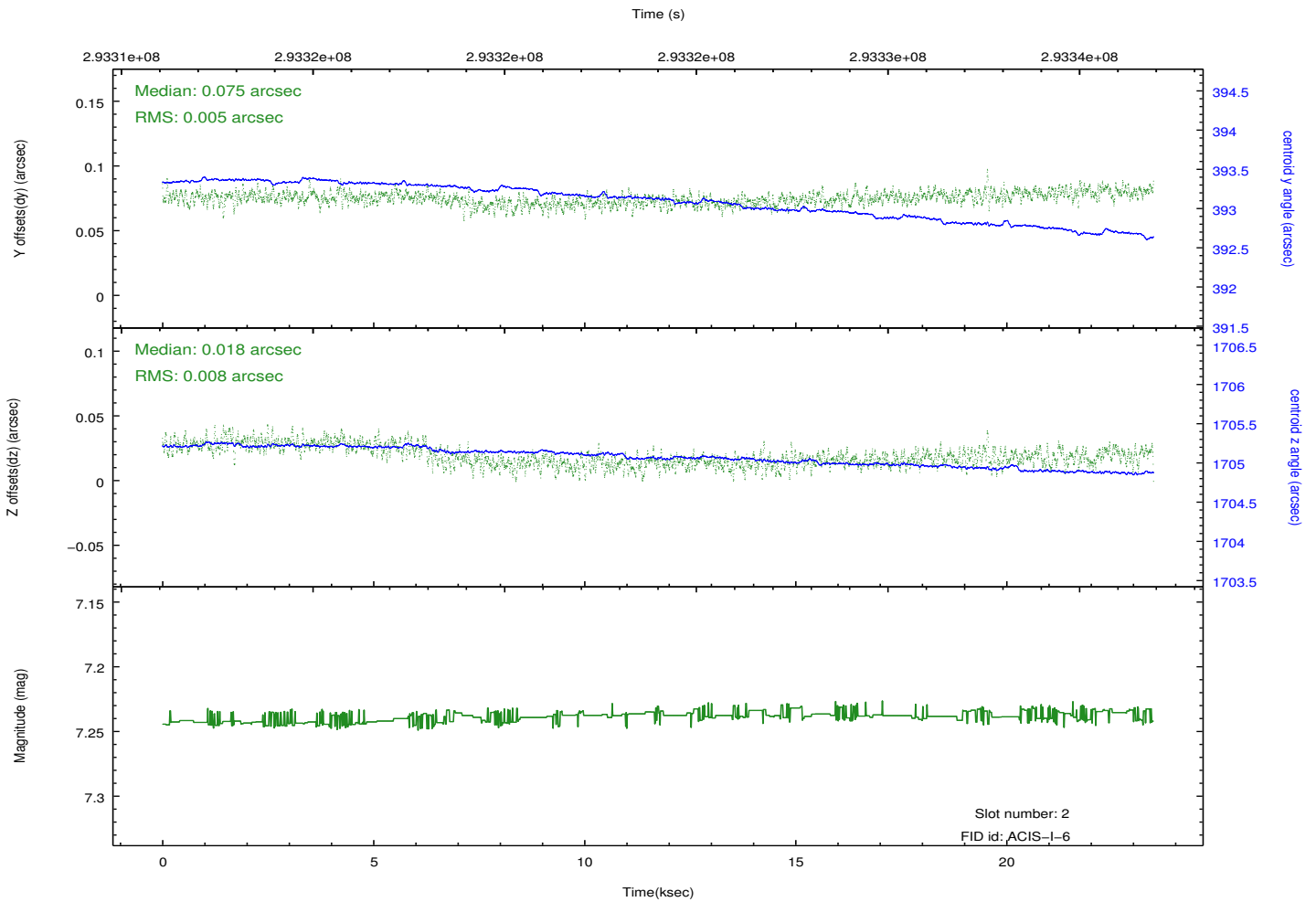
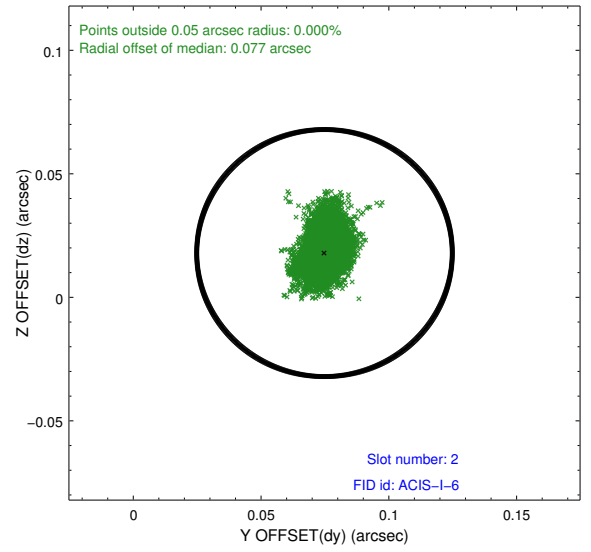
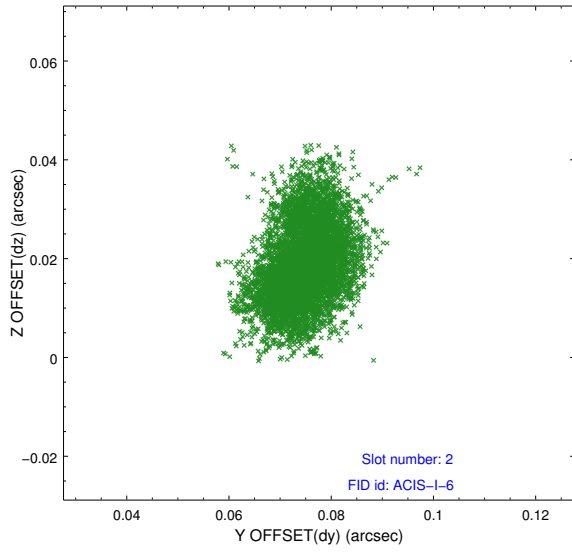
2.5.1 Slot 0



2.5.2 Slot 1



2.5.3 Slot 2



A Summary

A.1 Status

V&V Scientist	Jen Lauer
V&V Date (YYYY-MM-DD)	2012.04.24
V&V Edition	1
V&V Disposition and Status	OK
V&V Charge Time	23.4687179

A.2 Comments

Roll preference met.