

V&V Reference Report

L2 ASCDS Version : 8.4.4

Observation 8920 - L2 Version 2
Chandra X-Ray Center

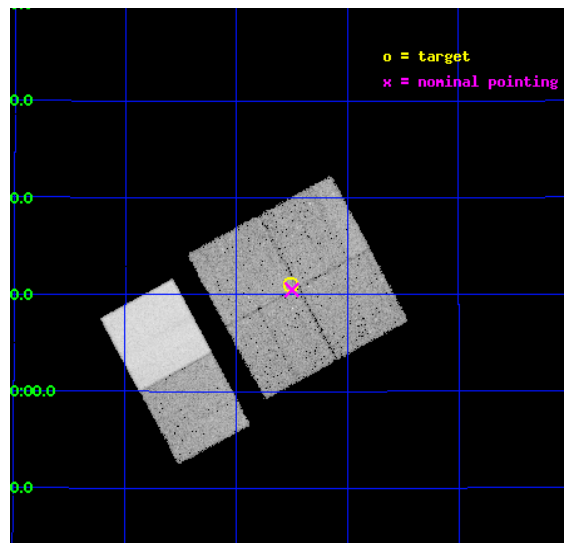
L2 Processing Date : May 8 2012

Contents

1	Front	2
2	OBI	3
2.1	OBI	3
2.1.1	Images	3
2.1.2	Bias	3
2.1.3	Parameters	4
2.1.4	Events	4
2.2	Compared Parameters	5
2.3	Aspect	6
2.4	Star Slots	9
2.4.1	Slot 3	9
2.4.2	Slot 4	10
2.4.3	Slot 5	11
2.4.4	Slot 6	12
2.4.5	Slot 7	13
2.5	FID Slots	14
2.5.1	Slot 0	14
2.5.2	Slot 1	15
2.5.3	Slot 2	16
A	Summary	17
A.1	Status	17
A.2	Comments	17

1 Front

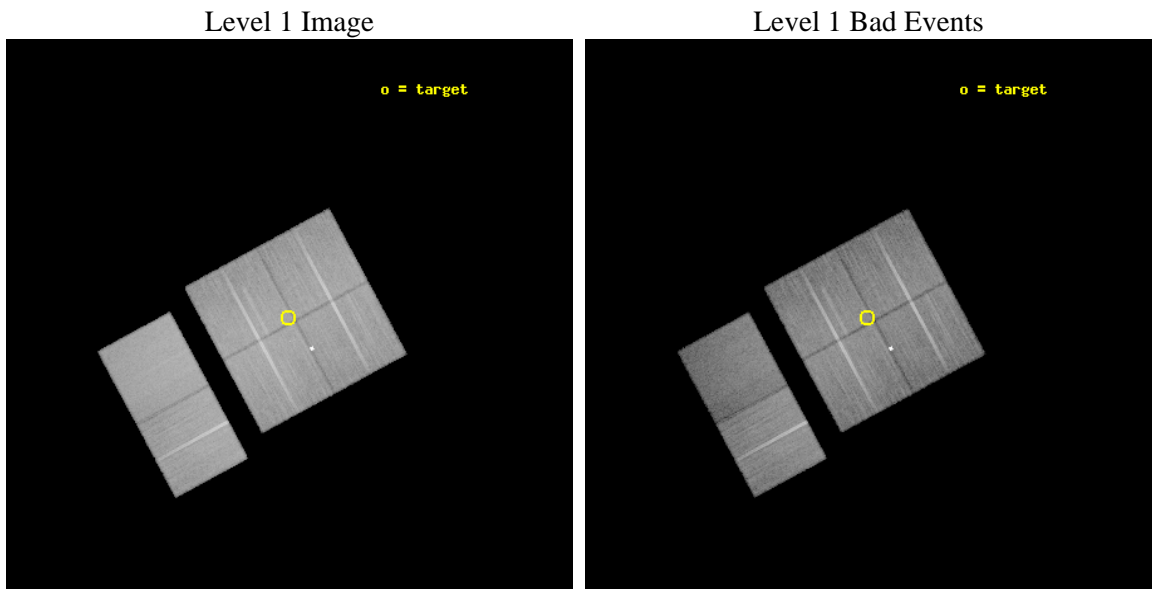
seq_num	200501	Sequence number
obs_id	8920	Observation id
title	The Full Picture of Magnetic Activity in Ultracool Dwarfs: Simultaneous Observations of Coronae and Chromospheres	Proposal title
observer	Prof. Edo Berger	Principal investigator
object	LSR0602+3910	Source name
dtcycle	0	
cycle	P	events from which exps? Prim/Second/Both
ra_targ	90.627083	Observer's specified target RA [deg]
dec_targ	39.183056	Observer's specified target Dec [deg]
ra_nom	90.625078321432	Nominal RA [deg]
dec_nom	39.175119846836	Nominal Dec [deg]
roll_nom	241.60796909231	Nominal Roll [deg]
revision	2	Processing version of data
ontime	30044.083176792	Sum of GTIs [s]
livetime	29663.646905232	Livetime [s]
ontime0	30047.201066971	Sum of GTIs [s]
ontime1	30047.242106974	Sum of GTIs [s]
ontime2	30037.560096204	Sum of GTIs [s]
ontime3	30044.083176792	Sum of GTIs [s]
ontime6	30047.406266987	Sum of GTIs [s]
ontime7	30047.365226984	Sum of GTIs [s]
l2events	215602	Number of level 2 events



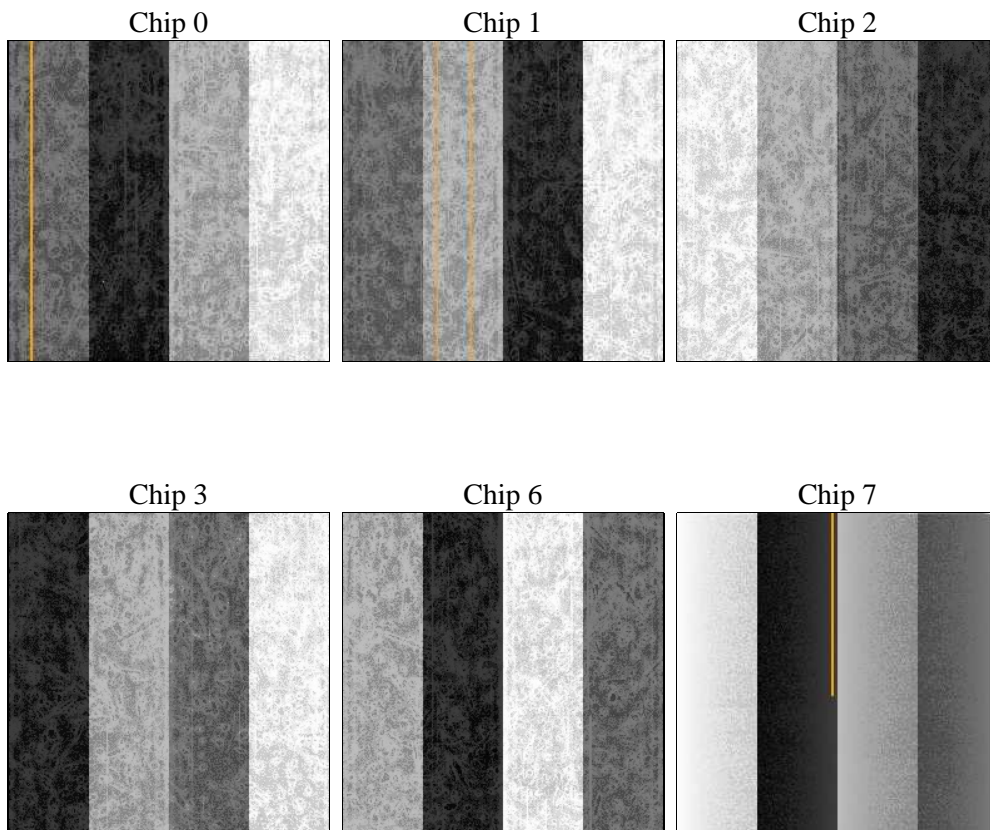
2 OBI

2.1 OBI

2.1.1 Images



2.1.2 Bias



2.1.3 Parameters

obi_num	0	Obi number	sched_exp_time	30000.000000	[s] Scheduled observation exposure time
ascdsver	8.4.4	Processing system revision	ontime	30044.083176792	Sum of GTIs [s]
caldbver	4.4.9	 	ontime0	30047.201066971	Sum of GTIs [s]
date	2012-05-08T04:06:55	Date and time of file creation	ontime1	30047.242106974	Sum of GTIs [s]
revision	2	Processing version of data	ontime2	30037.560096204	Sum of GTIs [s]
			ontime3	30044.083176792	Sum of GTIs [s]
			ontime6	30047.406266987	Sum of GTIs [s]
			ontime7	30047.365226984	Sum of GTIs [s]
			l1events	1434253	Number of level 1 events

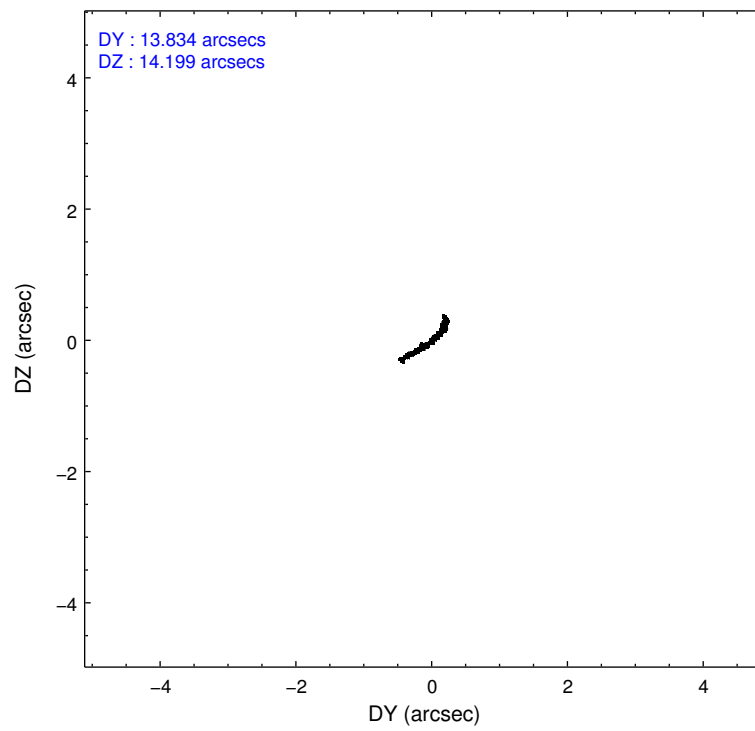
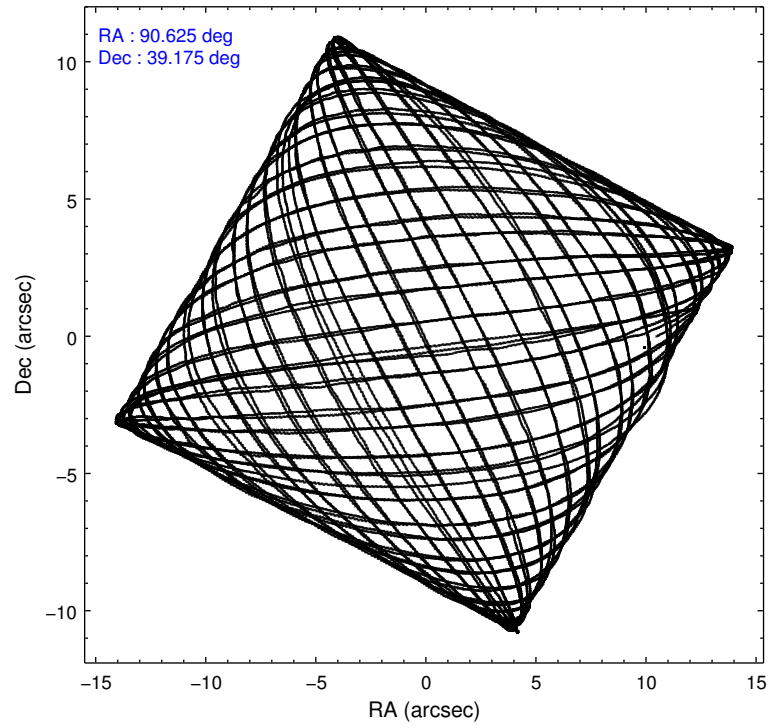
2.1.4 Events

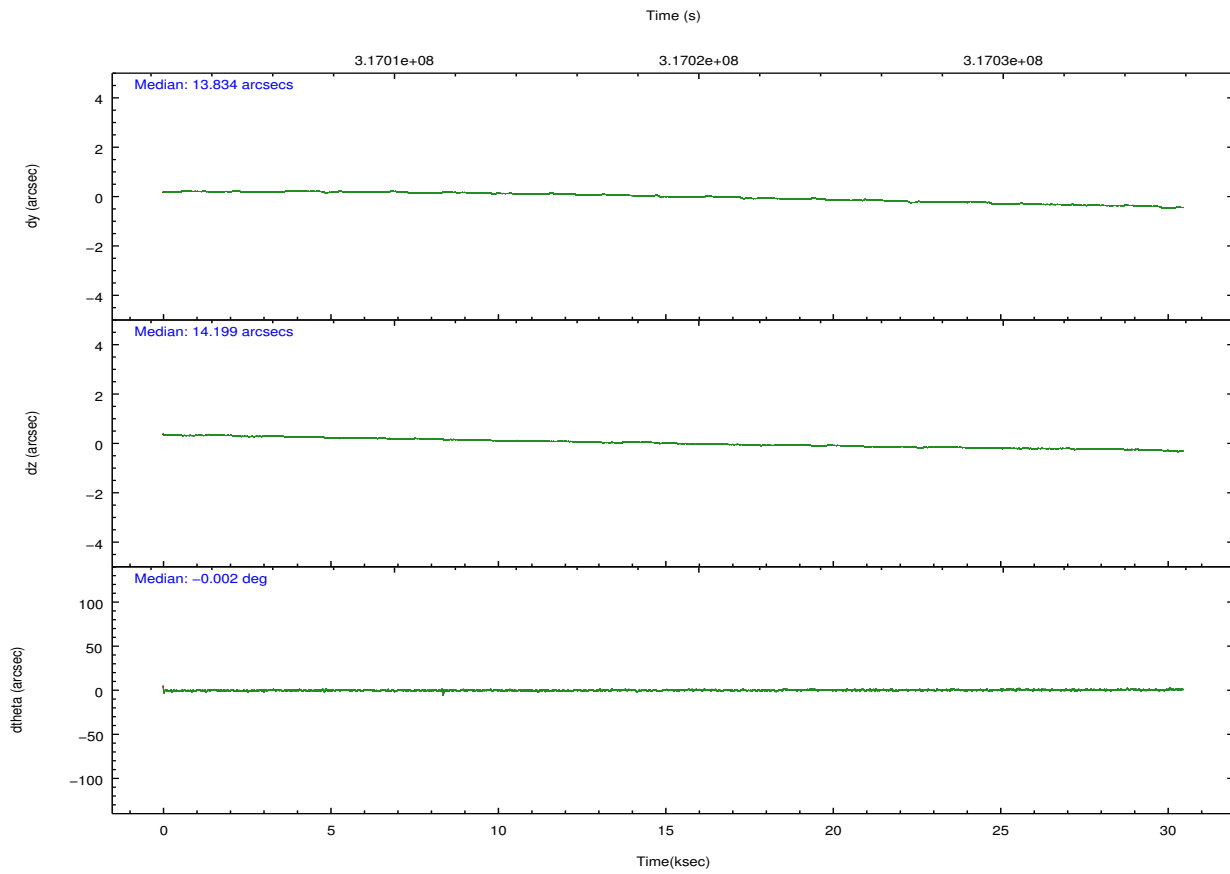
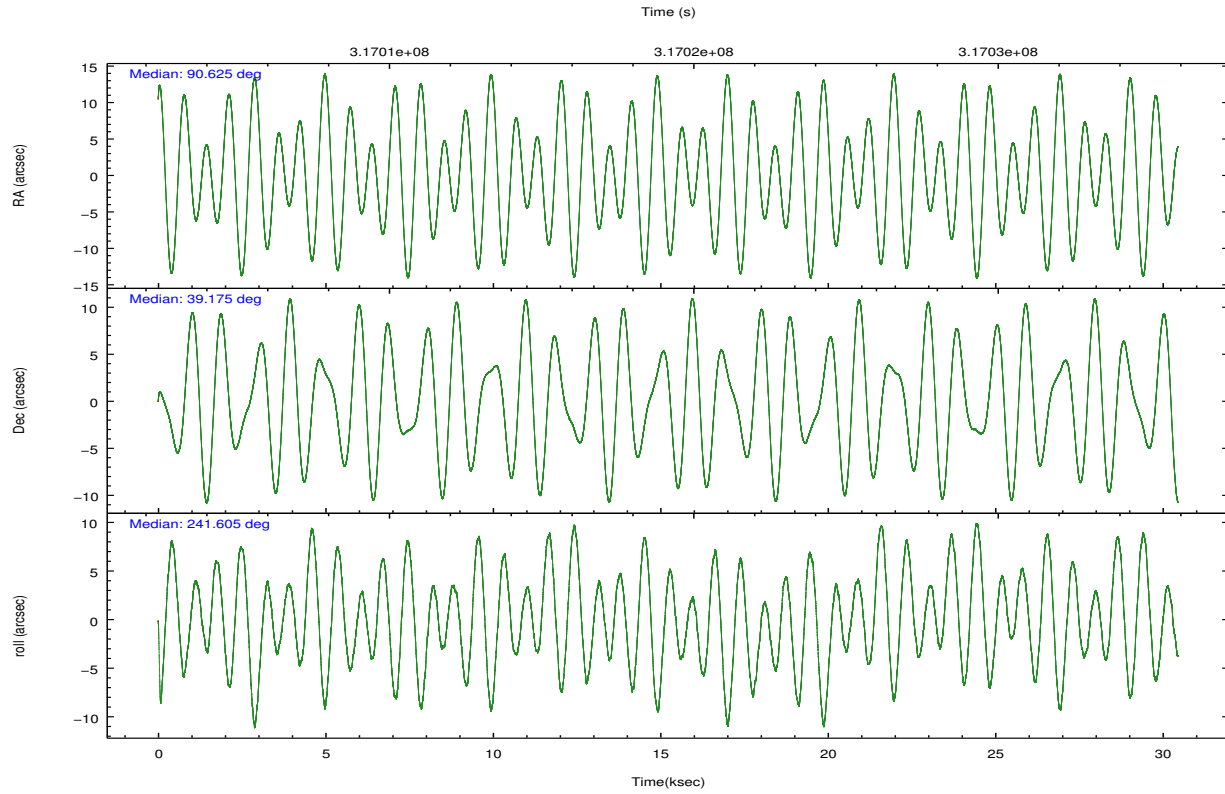
	ccd 0	ccd 1	ccd 2	ccd 3	ccd 6	ccd 7		ccd 0	ccd 1	ccd 2	ccd 3	ccd 6	ccd 7
level 1 events	228659	221407	242567	231541	245940	264139	grade 0 events	8177	9226	8031	7512	8298	10955
rejected events	205183	195382	219638	209620	221284	144109		3%	4%	3%	3%	3%	4%
rejected %	89%	88%	90%	90%	89%	54%	grade 1 events	108	116	141	138	121	326
								0%	0%	0%	0%	0%	0%
							grade 2 events	5555	5753	5519	4770	5497	24180
								2%	2%	2%	2%	2%	9%
							grade 3 events	2730	2822	2464	2516	2663	10784
								1%	1%	1%	1%	1%	4%
							grade 4 events	2506	2834	2552	2523	2610	10987
								1%	1%	1%	1%	1%	4%
							grade 5 events	8182	9017	7881	9508	9835	27748
								3%	4%	3%	4%	3%	10%
							grade 6 events	4510	5395	4365	4601	5591	63133
								1%	2%	1%	1%	2%	23%
							grade 7 events	196891	186244	211614	199973	211325	116026
								86%	84%	87%	86%	85%	43%

2.2 Compared Parameters

Parameter	Planned	Actual	Parameter	Planned	Actual
Instrument	ACIS	ACIS	Obspar format version number	7	7
Detector	ACIS-012367	ACIS-012367	Obspar file type	PREDICTED	ACTUAL
Grating	NONE	NONE	Obspar update status	NONE	UPDATED
Data mode	VFAINT	VFAINT	CCD I0 on	Y	Y
Observation mode	POINTING	POINTING	CCD I1 on	Y	Y
[deg] Pointing RA	90.623943	90.62507832143194	CCD I2 on	Y	Y
[deg] Pointing Dec	39.202609	39.17511984683593	CCD I3 on	Y	Y
[deg] Pointing Roll	241.399995	241.6079690923091	CCD S0 on	N	N
[s] Window start time (MET)	312854465.184000	312854465.184000	CCD S1 on	N	N
[s] Window stop time (MET)	320716865.184000	320716865.184000	CCD S2 on	O2	Y
[mm] SIM focus pos	-0.782348	-0.7809083437167272	CCD S3 on	O1	Y
[mm] SIM defocus	0	0.001439871863259334	CCD S4 on	N	N
[mm] SIM translation stage pos	-233.592463	-233.5874344608287	CCD S5 on	N	N
[mm] SIM translation stage offset	0	-0.005018542100998502	Number of optional ACIS chips dropped	0	0
[s] Observation start time (MET)	317004377.184000	317003240.0741	On-chip summing requested	N	N
Observation start date	2008-01-18T00:45:12	2008-01-18T00:27:20	Subarray requested	NONE	NONE
[s] Observation end time (MET)	317034377.184000	317035730.52568	Alternating exposures requested	N	N
Observation end date	2008-01-18T09:05:12	2008-01-18T09:28:50	[s] Primary exposure time	0.000000	3.2
Read mode	TIMED	TIMED			

2.3 Aspect



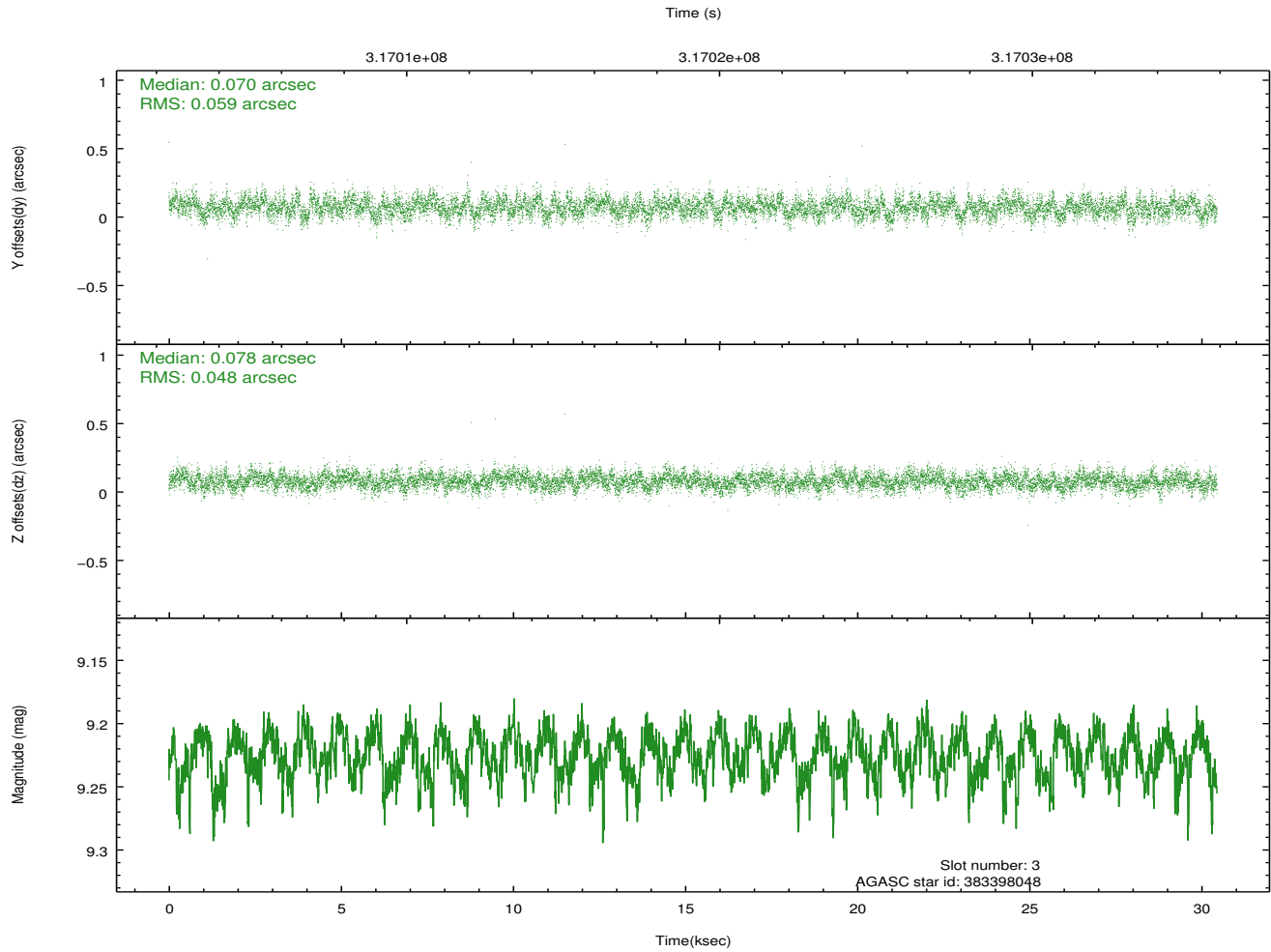
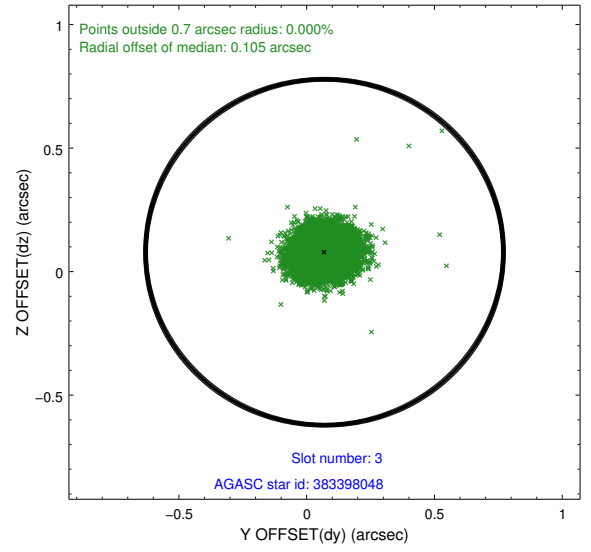
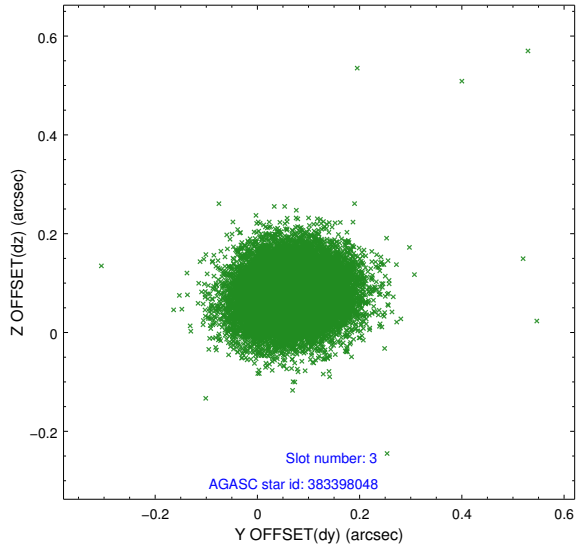


Slot Statistics

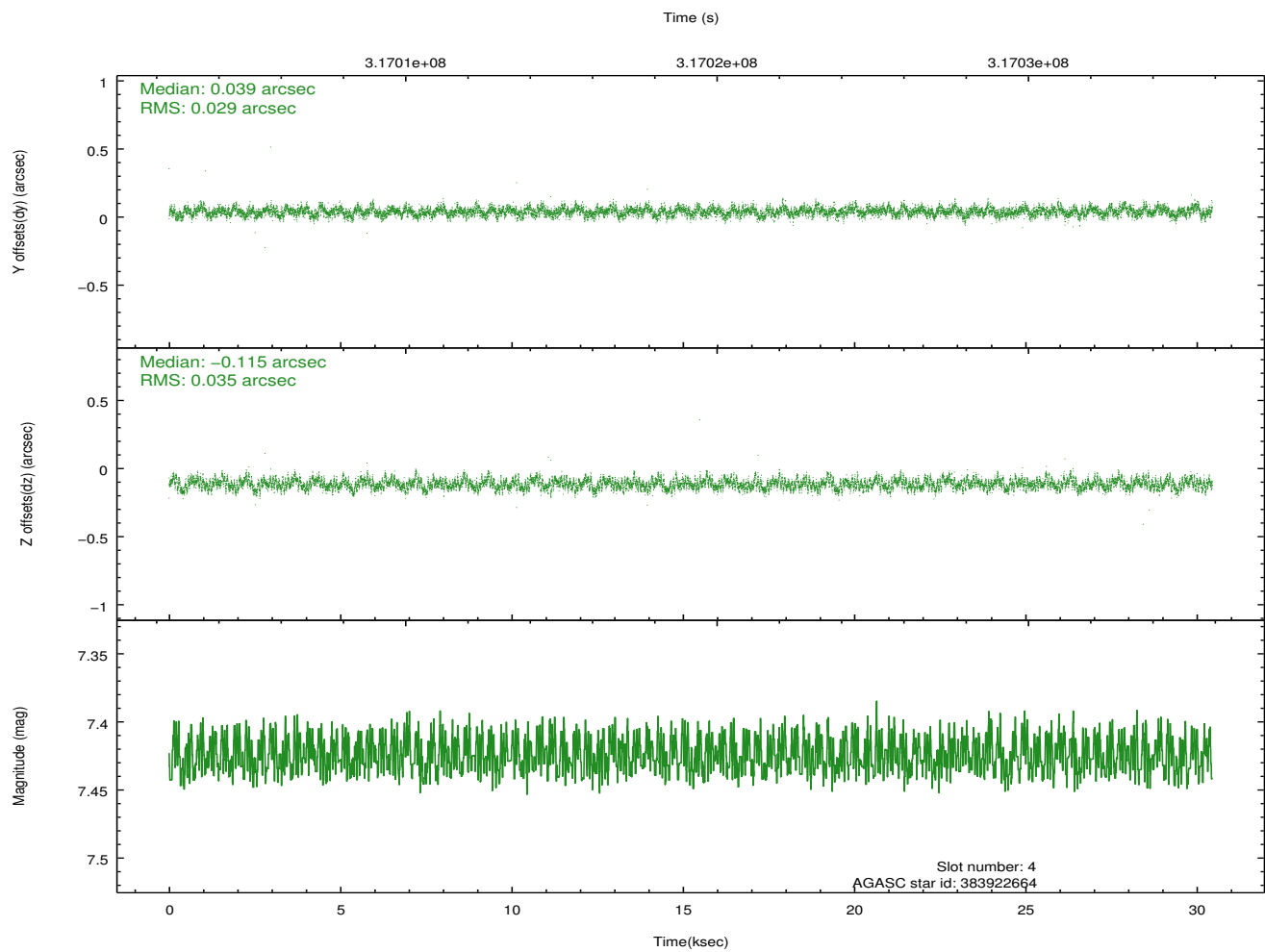
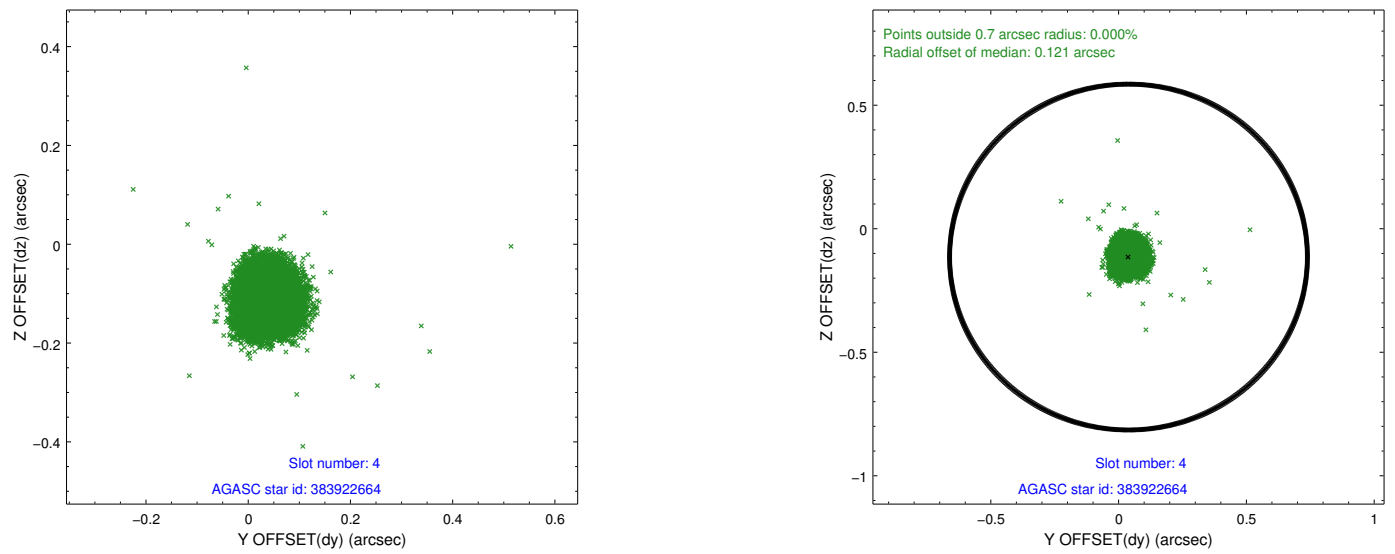
slot	status	id	mag	n_pts	med_dy	med_dz	dr1	dr2	ra	dec	mean_y	mean_z
0	FID	ACIS-I-1	7.24	7428	-0.010	0.019	0.010	0.020	0.000000	0.000000	925.68	-837.77
1	FID	ACIS-I-4	7.16	7427	0.190	0.015	0.010	0.017	0.000000	0.000000	2145.96	1062.00
2	FID	ACIS-I-5	7.22	7428	-0.277	0.036	0.008	0.014	0.000000	0.000000	-1822.50	1059.94
3	GUIDE	383398048	9.22	14800	0.070	0.078	0.080	0.130	90.462125	38.628618	2032.18	589.89
4	GUIDE	383922664	7.43	14855	0.039	-0.115	0.048	0.076	90.280154	39.670621	-1024.17	-1643.68
5	GUIDE	383926088	9.22	14847	0.044	0.086	0.085	0.137	90.317685	39.959606	-1988.95	-2047.14
6	GUIDE	383928368	8.55	14850	-0.041	-0.061	0.064	0.103	90.875314	39.403732	-971.05	266.87
7	GUIDE	383919208	7.40	14848	-0.110	0.014	0.058	0.094	90.087146	39.877250	-1426.02	-2466.63

2.4 Star Slots

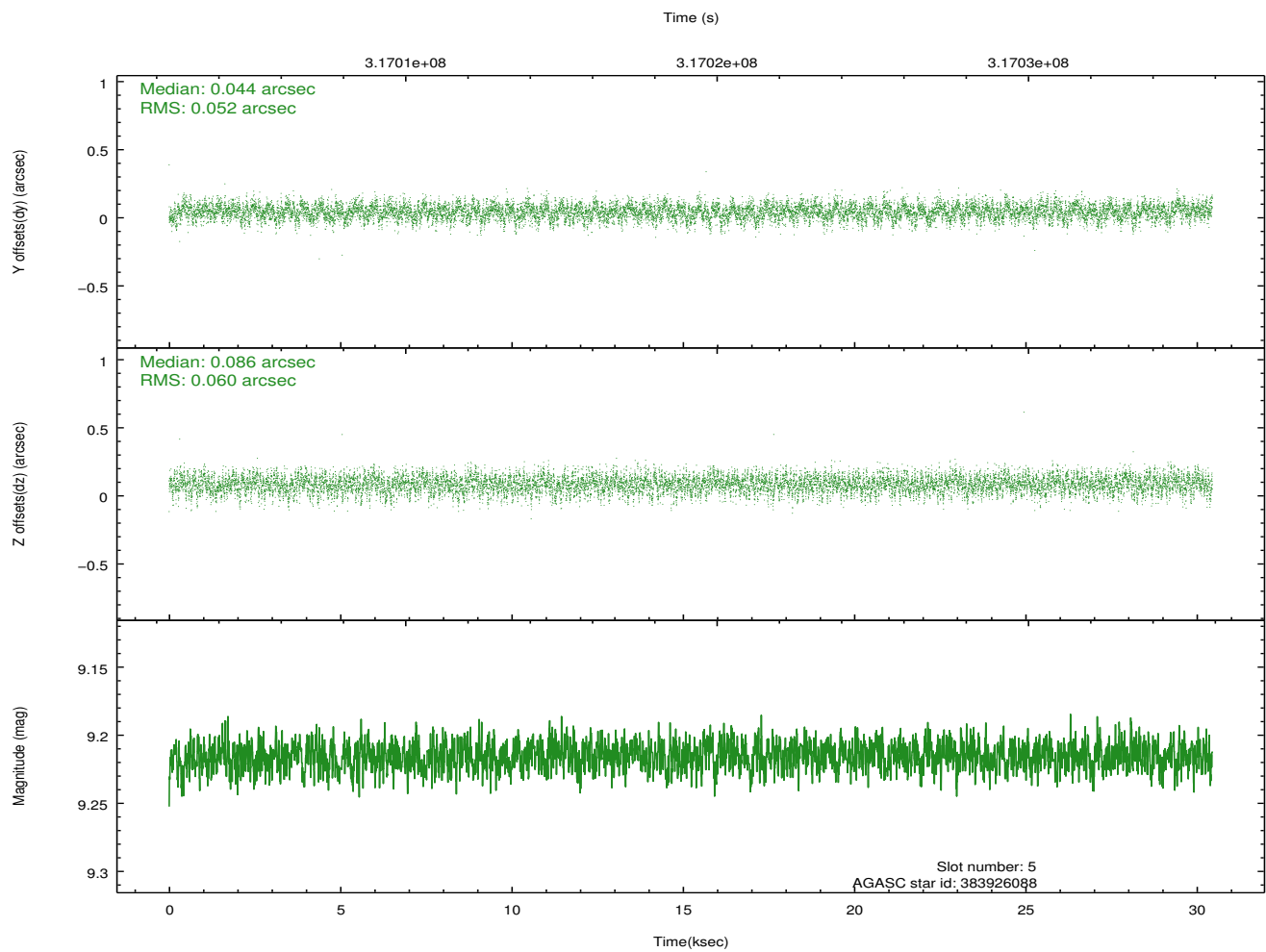
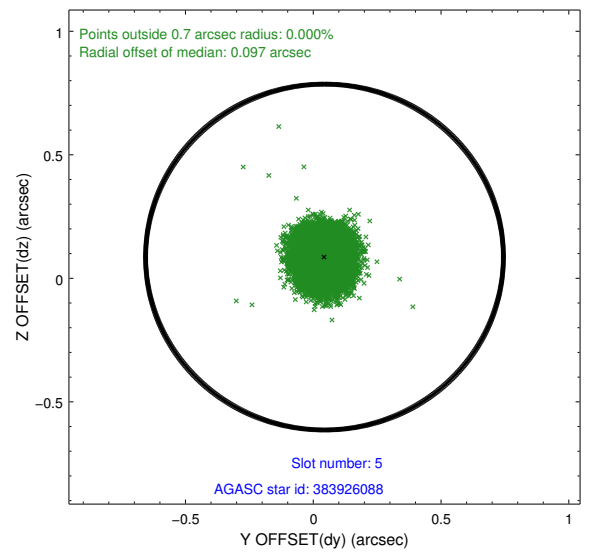
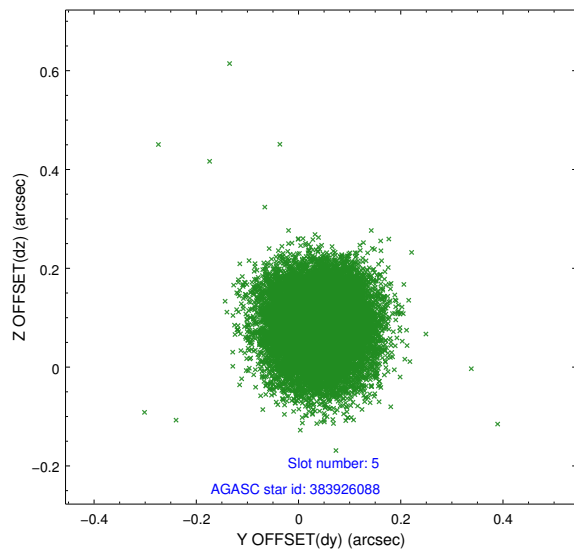
2.4.1 Slot 3



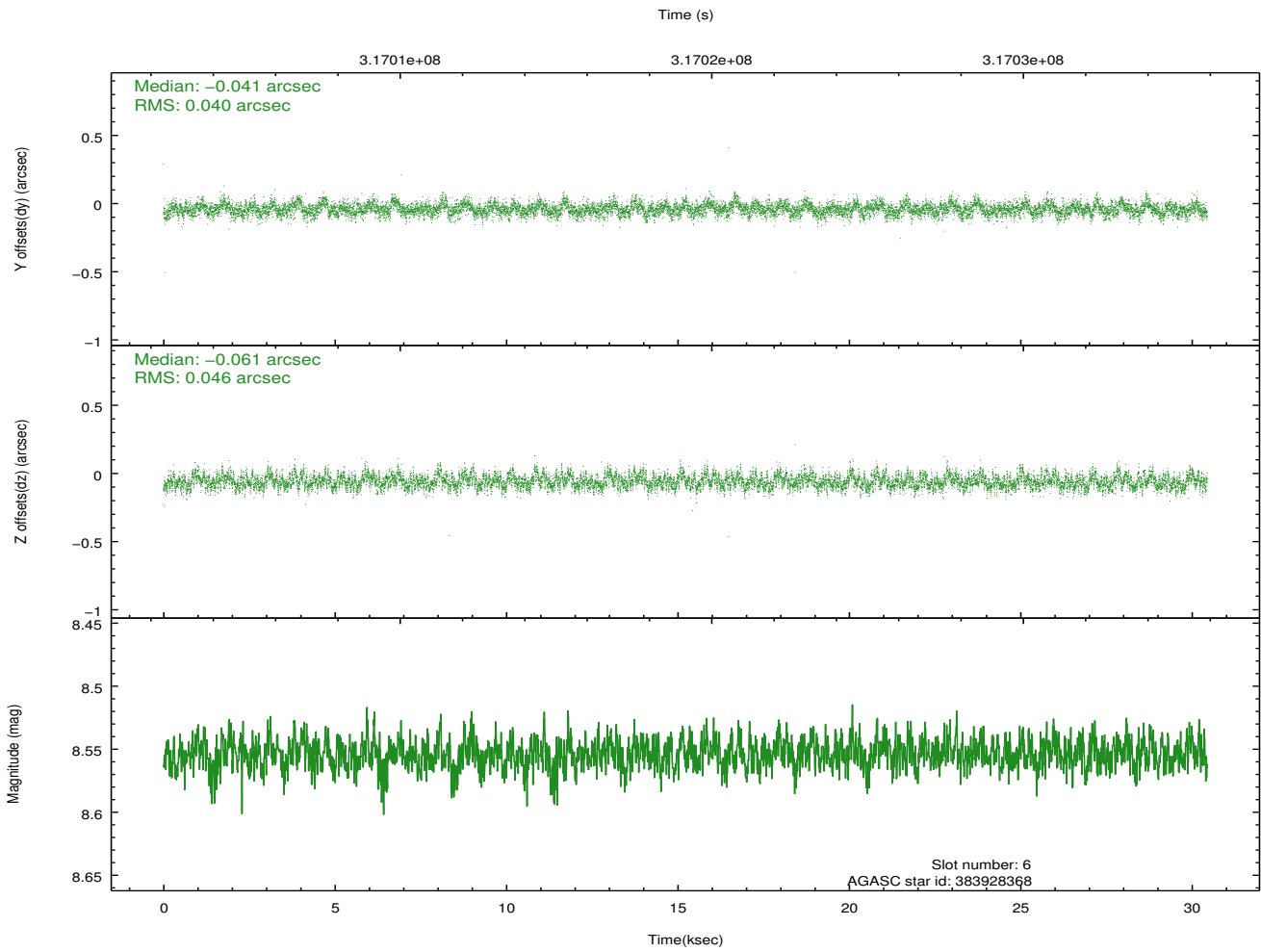
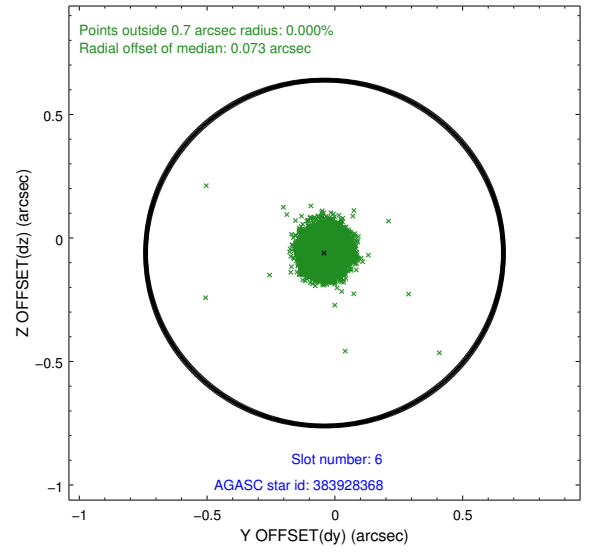
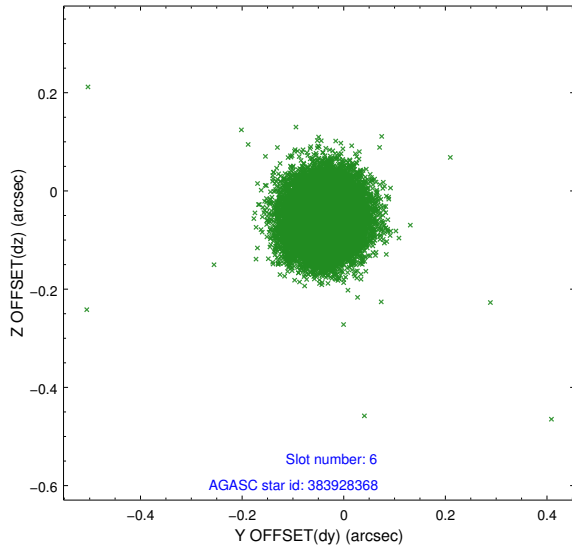
2.4.2 Slot 4



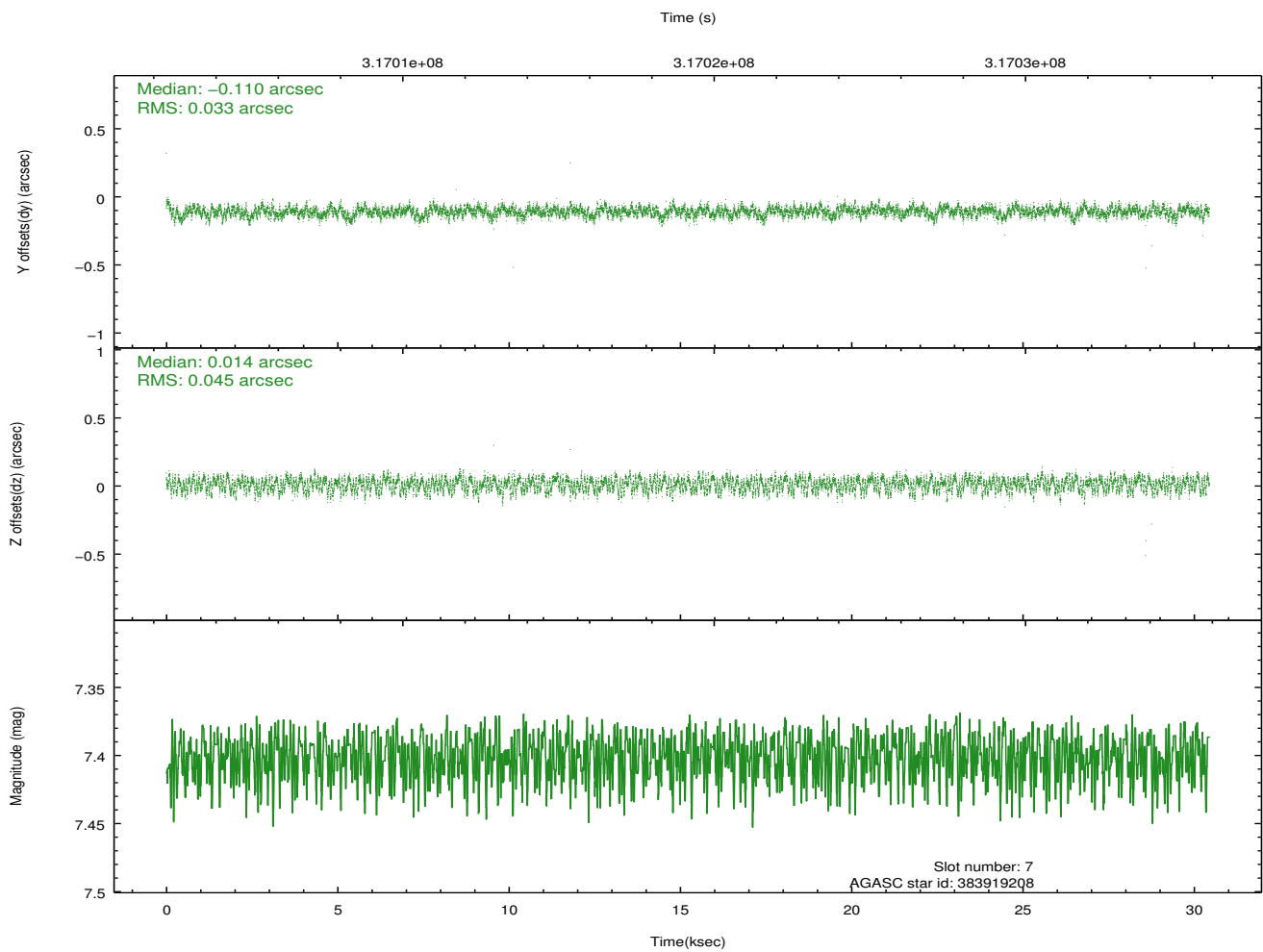
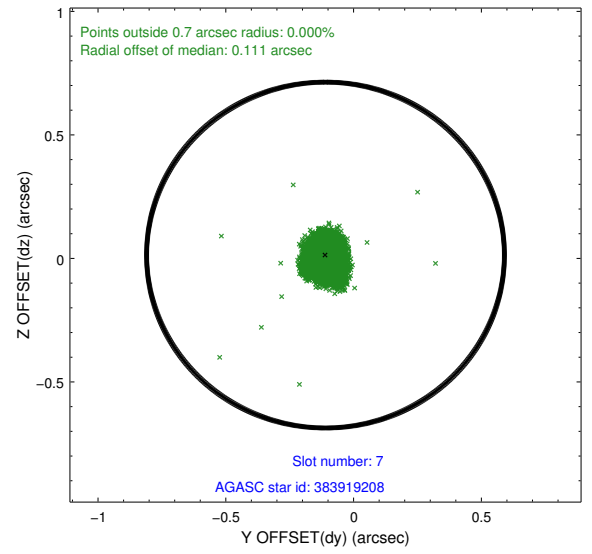
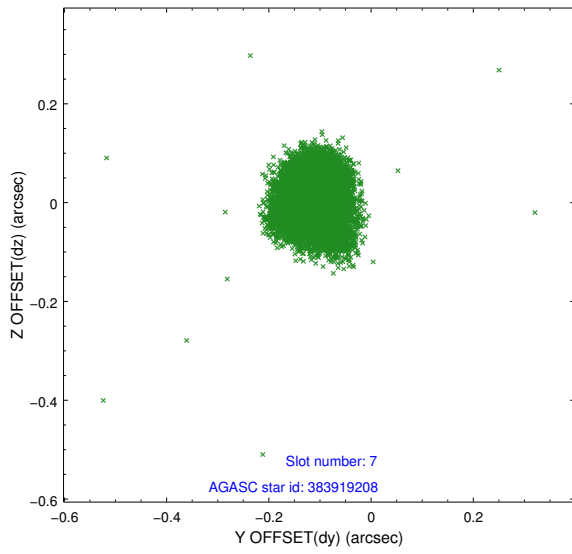
2.4.3 Slot 5



2.4.4 Slot 6

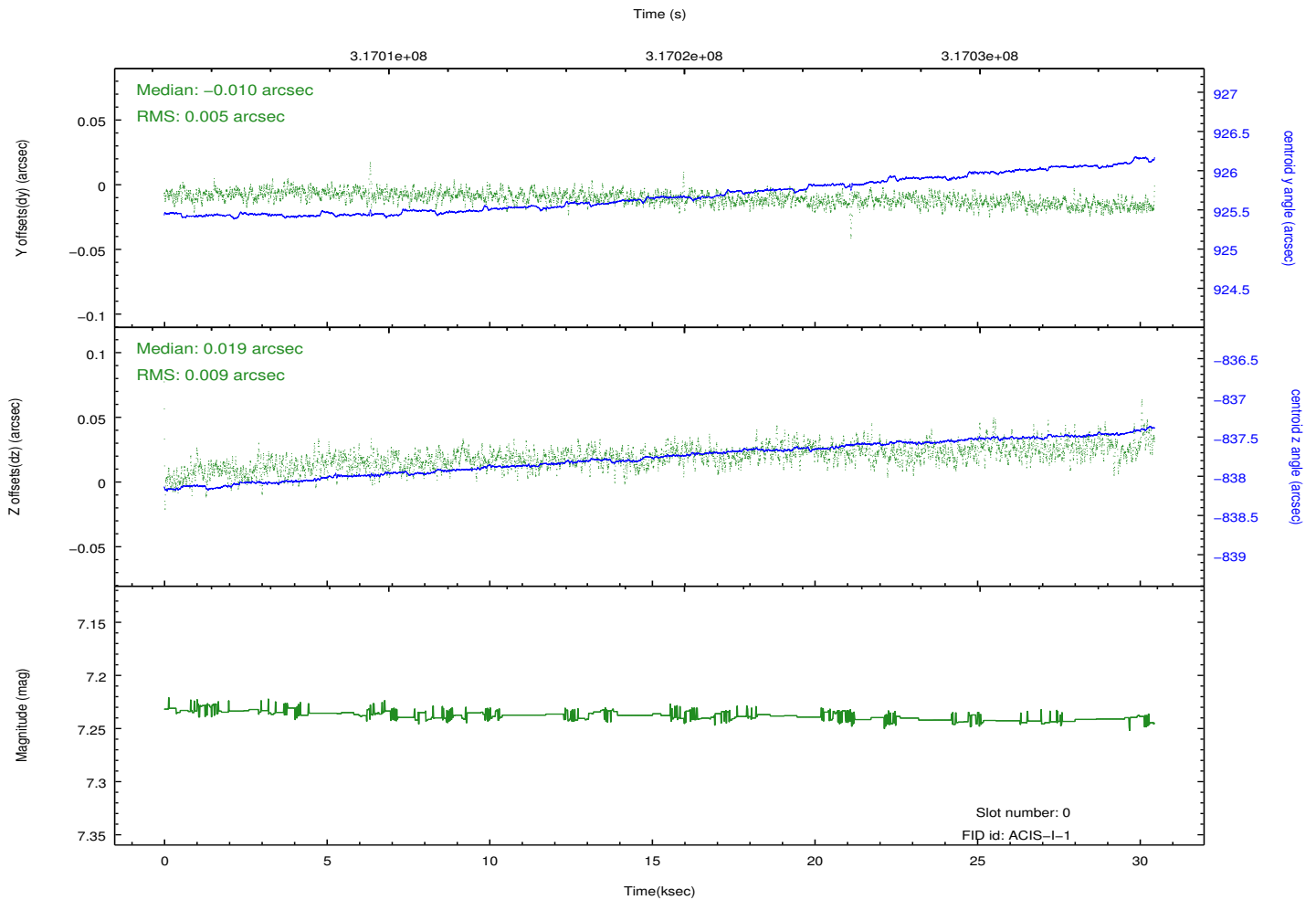
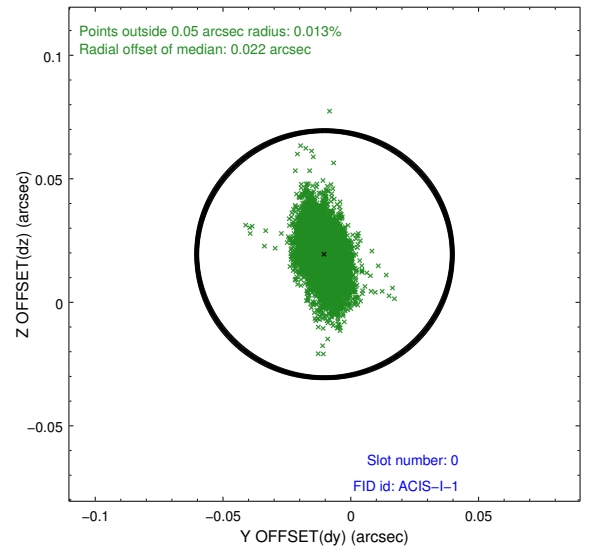
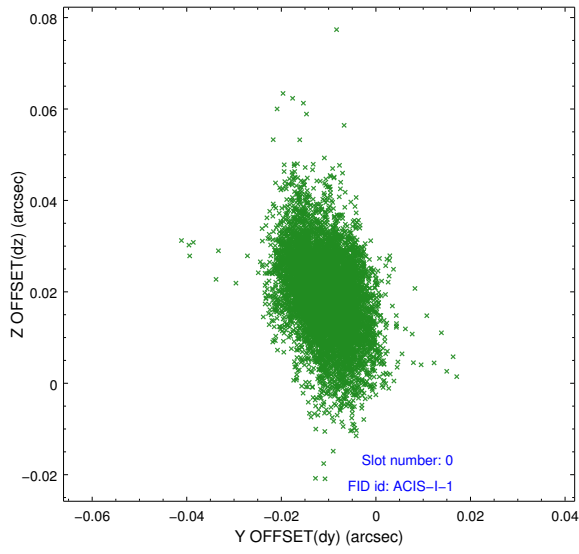


2.4.5 Slot 7

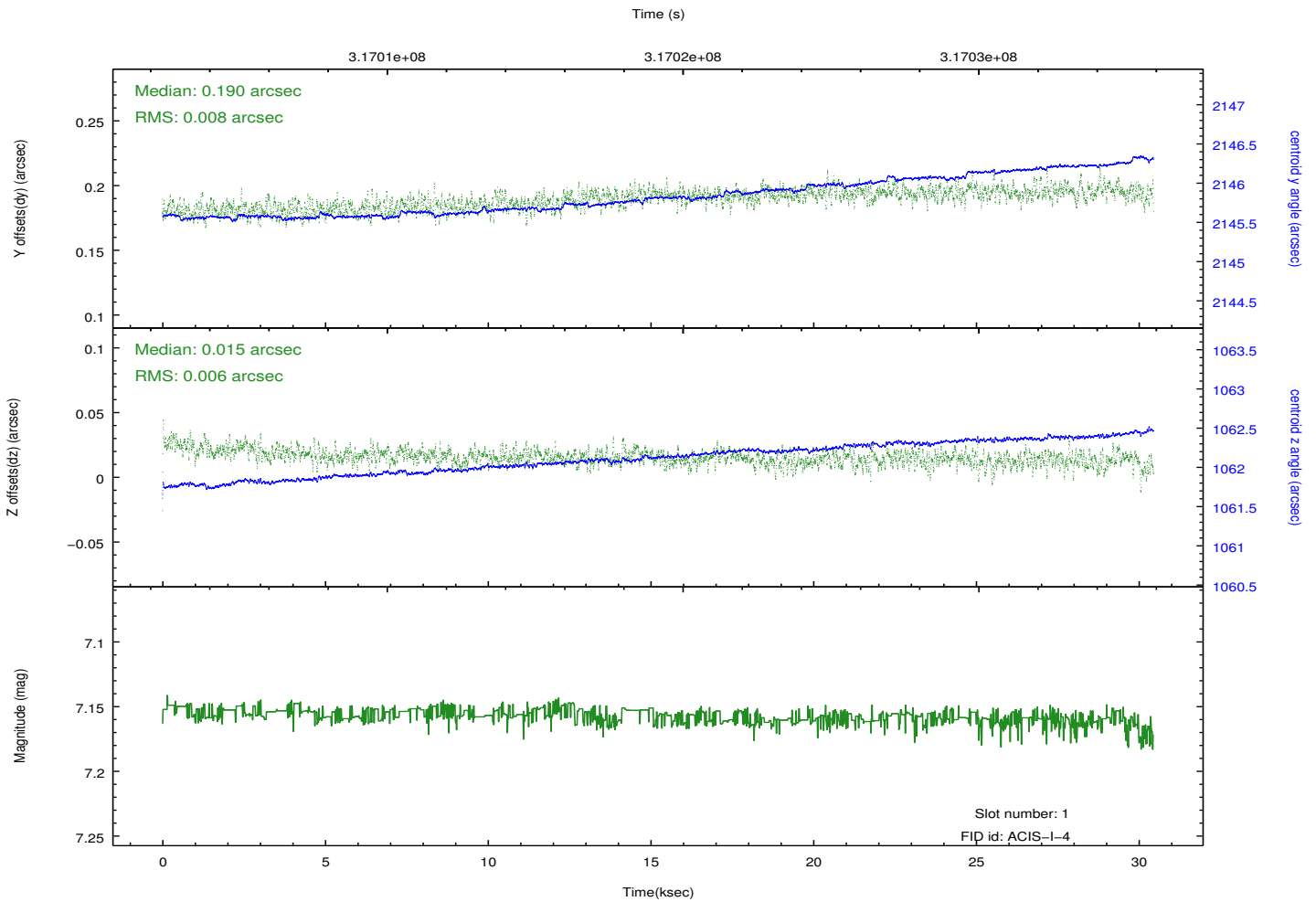
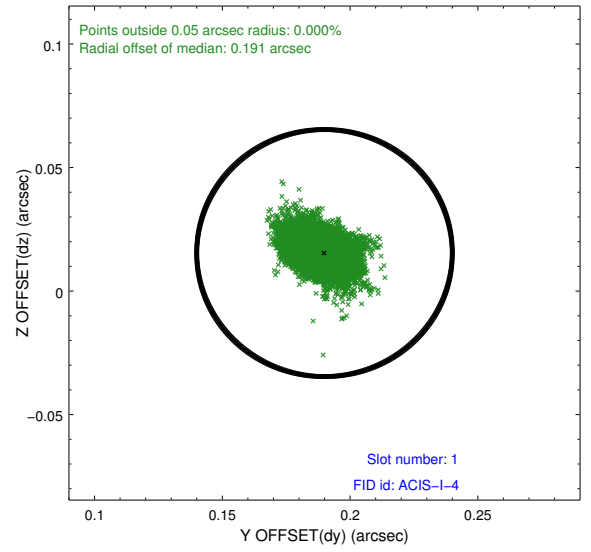
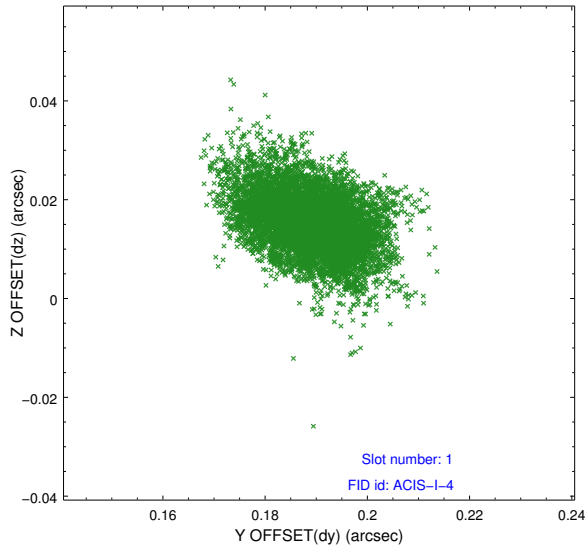


2.5 FID Slots

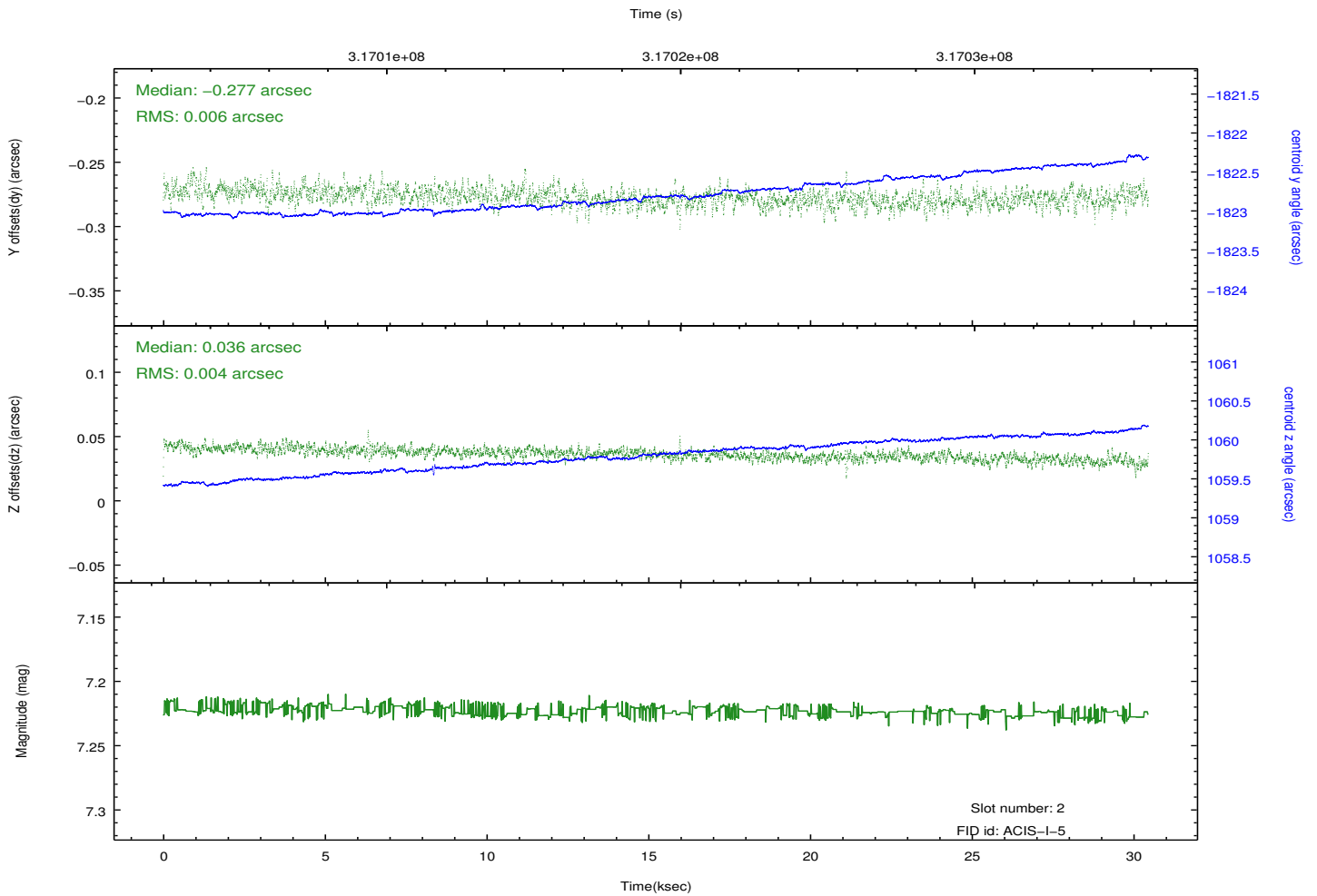
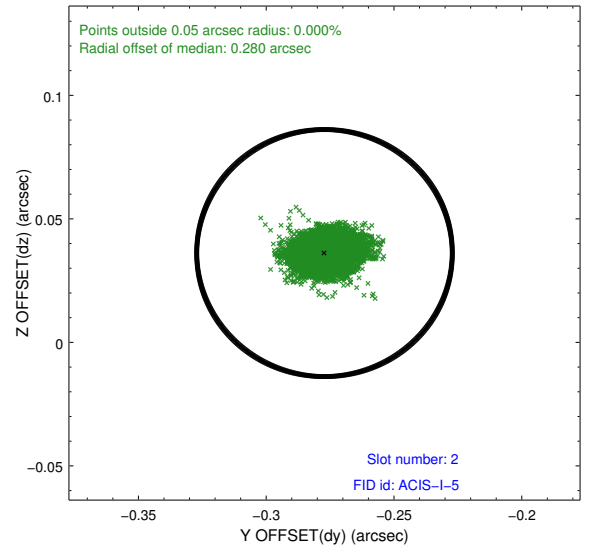
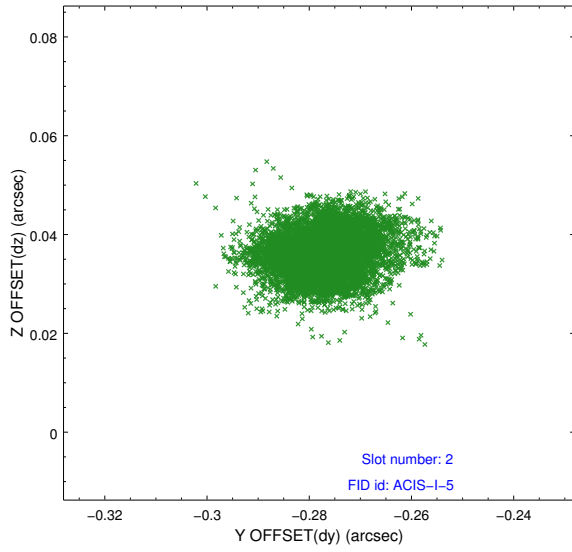
2.5.1 Slot 0



2.5.2 Slot 1



2.5.3 Slot 2



A Summary

A.1 Status

V&V Scientist	Jen Lauer
V&V Date (YYYY-MM-DD)	2012.05.10
V&V Edition	1
V&V Disposition and Status	OK
V&V Charge Time	30.0447588

A.2 Comments

Joint proposal with NRAO. Time constraint met.